

## SPEED READ

- Loads on wheels declined marginally overnight, reflecting reduced CP volumes offset by an increase in CN volumes. On a net basis, volumes declined due to reduced traffic in the Vancouver and USA/MEX corridors offset by higher volumes in the Prince Rupert and E. Canada corridors.
- Network fluidity improved overnight, led by a decline in idle car counts on CP by 9% (-138) offset by an increase in idle car counts on CN by 3% (+58).
- While the total number of cars sitting idle under load has continued to decline somewhat steadily over the last few days the eastern Canada corridor remains problematic. The count of cars under load not moving for 2+ days increased yesterday to more than 1,000 for CN and CP combined.
- Little progress has been made since rail blockades have been removed with this count falling below 1,000 only once in the last 8 days. Of concern is that nearly 90% of these cars have been sitting idle under load for 4+ days.
- On a system basis (all corridors) the count of cars for 4+ days on both railways declined marginally (-73) overnight but remains high at 1,944 cars.
- Four days in Week 30 unloads remain slightly ahead of last week's pace (excluding Thunder Bay) reflecting higher unloads at Prince Rupert offset by slightly lower unloads at Vancouver.

## Loads on Wheels

- Loads on wheels declined for the third consecutive day, down 1% (-128) overnight, due to reduced traffic on CP offset by higher traffic on CN - combined total at 10,409 and 8% below the trailing 30-day average.
- On a net basis, the decline in loads on wheels reflects reduced traffic in the Vancouver and USA/MEX corridors offset by higher volumes in the Prince Rupert and E. Canada corridors.
- CN volumes increased slightly by 1% (+57) overnight, with higher volumes in the Prince Rupert and E. Canada corridors offset by reduced volumes in the Vancouver corridor. System wide CN loads on wheels now at 6,297 and in line with the trailing 30-day average.
- CP volumes declined 4% (-140) overnight, driven by a decline in traffic across all corridors. CP system wide loads on wheels presently at 3,853, the lowest seen in the last 30 days, and 19% below the trailing 30-day average.
- Vancouver presently at 6,374, declined 4% (-239) overnight, now 15% below the trailing 30-day average.
- The Prince Rupert pipeline presently at 1,648, gained 9% (+141) overnight, and 5% above the trailing 30-day average.

## Hopper Car Rationing

- Shippers now report that CN rationed more than 2,200 hopper car orders in week 29 - a number that is likely to rise as not all shippers have yet reported. This is on the heels of CN rationing nearly 8,400 orders over the course of the last 5 weeks.

## Loads Not Moving

- **The count of cars not moving for 48+ hours declined for the third consecutive day, down 3% (-80) overnight, reflecting lower counts on CP offset by higher counts on CN. Idle car counts now at 3,113, the lowest seen in the last 30 days, and 29% below the trailing 30-day average.**
- CN
  - **The count of idle cars for 48+ hours gained 3% (+58) overnight - now at 1,783 cars.**
  - The number of cars idle for 4+ days fell 7% (-77) overnight - presently at 1,103 cars, the lowest seen in the last 30 days.
  - The count of cars not moving for 7+ days declined for the fourth consecutive day, down 5% (-30) overnight - now at 606 cars.
  - Vancouver represents 21% of all idle cars.
  - In total 46% of all idle cars are dwelling at origin locations.
- CP

- **CP idle car counts for 48+ hours declined 9% (-138) overnight - presently at 1,330 cars.**
- The number of cars idle for 4+ days increased marginally by (+4) overnight - presently at 841 cars.
- The number of cars idle for 7+ days increased for the third consecutive day, up 98% (+276) overnight - presently at 557 cars.
- Vancouver accounts for 71% of all idle cars.
- In total 77% of all idle cars are dwelling at origin locations.

### **Port Performance**

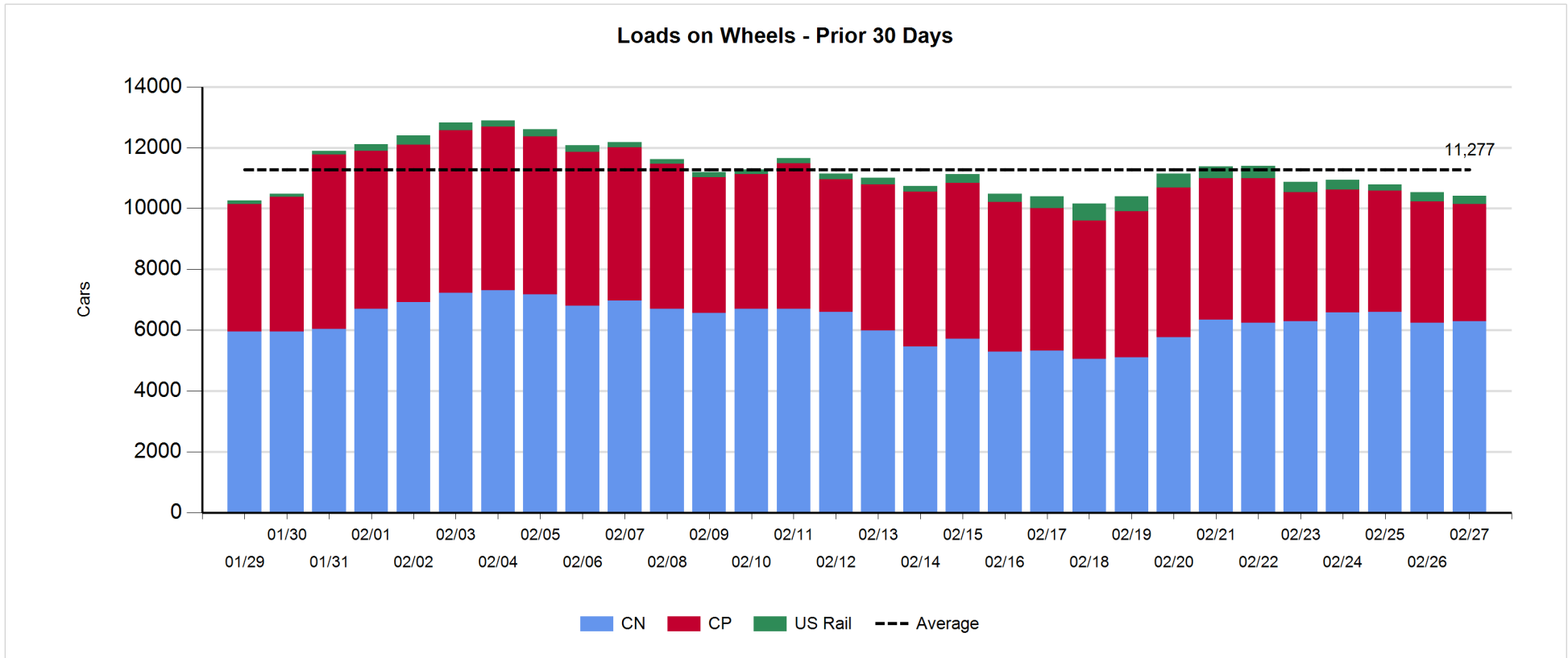
- CN and CP reported a total of 947 cars unloaded at the three major ports, 18% above the trailing 30-day average. Four days in Week 30 unloads remain slightly ahead of last week's pace reflecting higher unloads at Prince Rupert offset by slightly lower unloads at Vancouver.
- Vancouver
  - 739 unloads reported by CN and CP at the Port of Vancouver; CN - 340 and CP - 399. Four days in Week 30 unloads are tracking behind last week's performance by more than 50 unloads.
  - There are 950 cars on site at Vancouver with less than 850 cars arriving at the port in the last 24 hours.
  - CN and CP have 1,700 cars in British Columbia en route to Vancouver, with 1,100 cars at Kamloops and west, and 72% of traffic moving on CN.
- Prince Rupert
  - Prince Rupert reported 208 unloads, now ahead of last week's unloads after four days by 150 unloads.
  - Loads on wheels remain above 1,000 cars - now at 1,648 cars.
  - There are about 150 cars west of Jasper en route to Prince Rupert.
  - There are 300 cars on site at Prince Rupert with about 400 cars arriving at the port in the last 24 hours.

**Daily Loads on Wheels - 2/27/2020**

	E Canada	Prince Rupert	Thunder Bay	USA/MEX	Vancouver	Total
CN	1,193	1,648	1	247	3,208	6,297
CP	310		1	422	3,120	3,853
Short Line	144				46	190
US Rail				69		69
	1,647	1,648	2	738	6,374	10,409

**Change in Loads on Wheels - Prior 24 Hours**

	E Canada	Prince Rupert	Thunder Bay	USA/MEX	Vancouver	Total
CN	51	141	0	0	-135	57
CP	-3		0	-37	-100	-140
Short Line	-33				-4	-37
US Rail				-8		-8
	15	141	0	-45	-239	-128

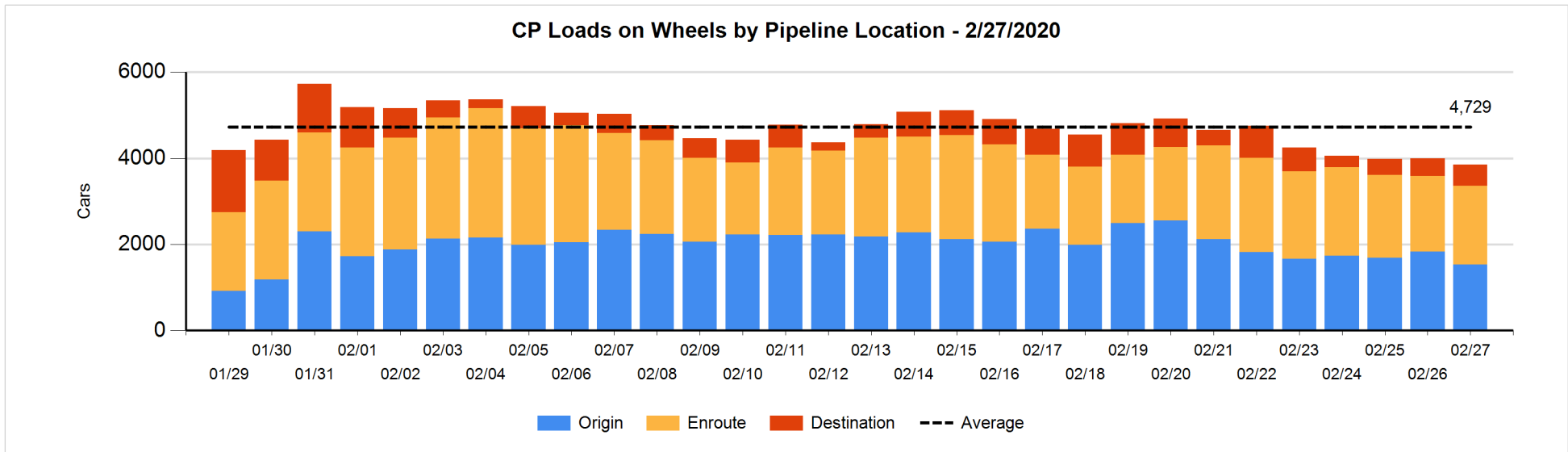
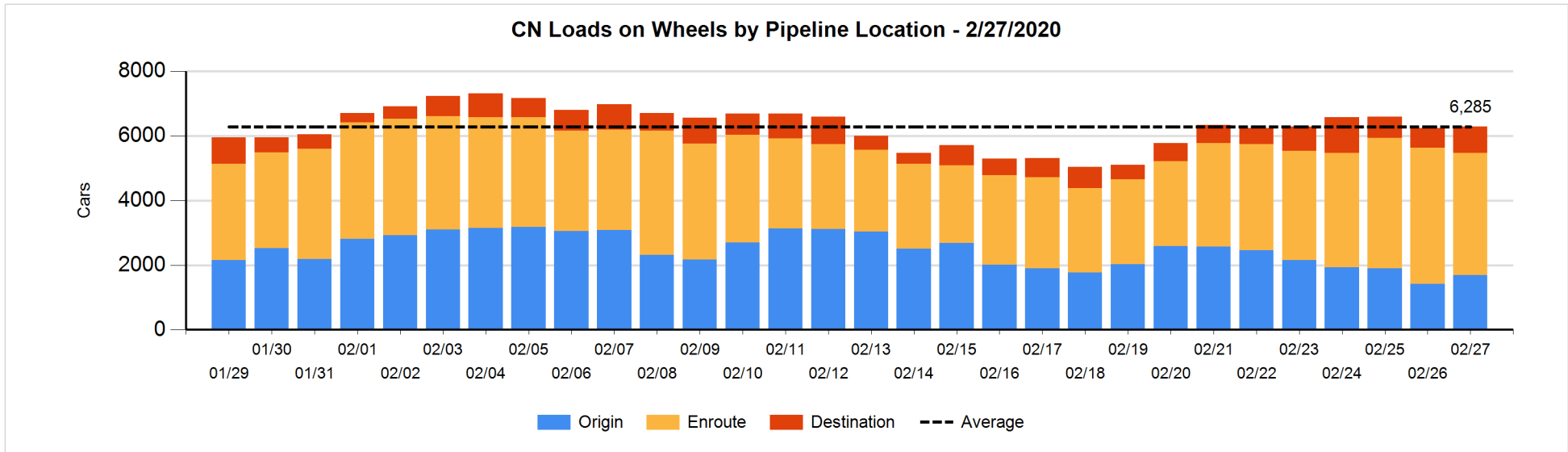


**Daily Loads on Wheels By Pipeline Location - 2/27/2020**

	E Canada	Prince Rupert	Thunder Bay	USA/MEX	Vancouver	Total
CN						
Origin	149	683		48	805	1,685
Enroute	972	675		181	1,963	3,791
Destination	72	290	1	18	440	821
	1,193	1,648	1	247	3,208	6,297
CP						
Origin	6			217	1,303	1,526
Enroute	296			179	1,359	1,834
Destination	8		1	26	458	493
	310		1	422	3,120	3,853
US Rail / Short Line						
Origin						
Enroute	69			35		104
Destination	75			34	46	155
	144			69	46	259

**Change in Daily Loads on Wheels By Pipeline Location - Prior 24 Hours**

	E Canada	Prince Rupert	Thunder Bay	USA/MEX	Vancouver	Total
CN						
Origin	50	250		4	-38	266
Enroute	-50	-283		-2	-84	-419
Destination	51	174	0	-2	-13	210
	51	141	0	0	-135	57
CP						
Origin	2			3	-312	-307
Enroute	-4			-24	113	85
Destination	-1		0	-16	99	82
	-3		0	-37	-100	-140
US Rail / Short Line						
Origin						
Enroute	-36			-1		-37
Destination	3			-7	-4	-8
	-33			-8	-4	-45

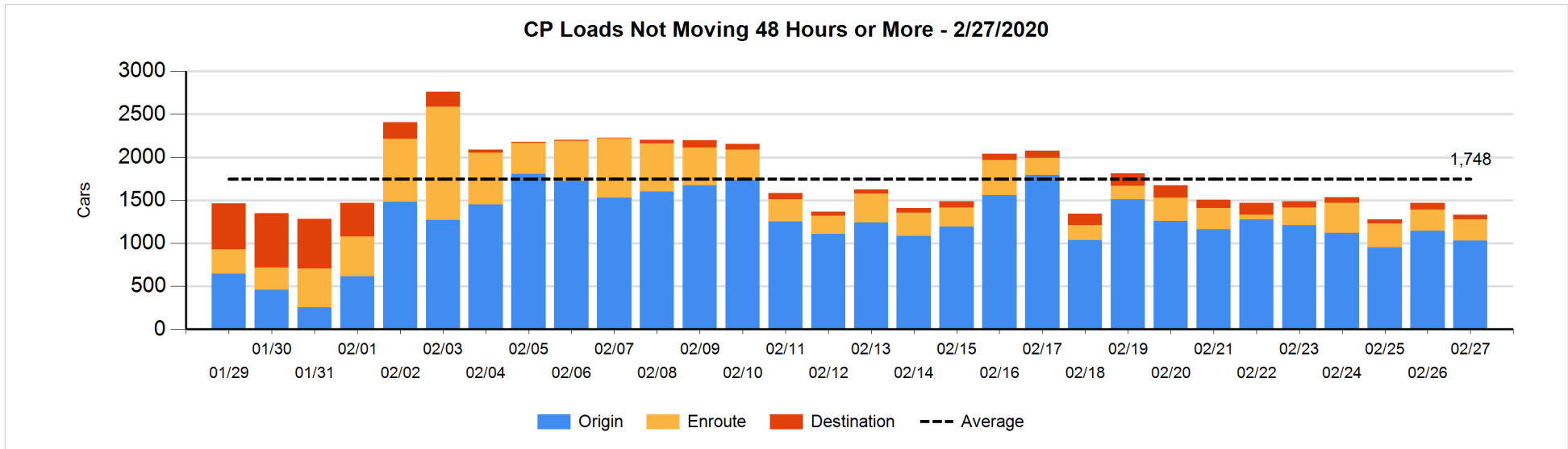
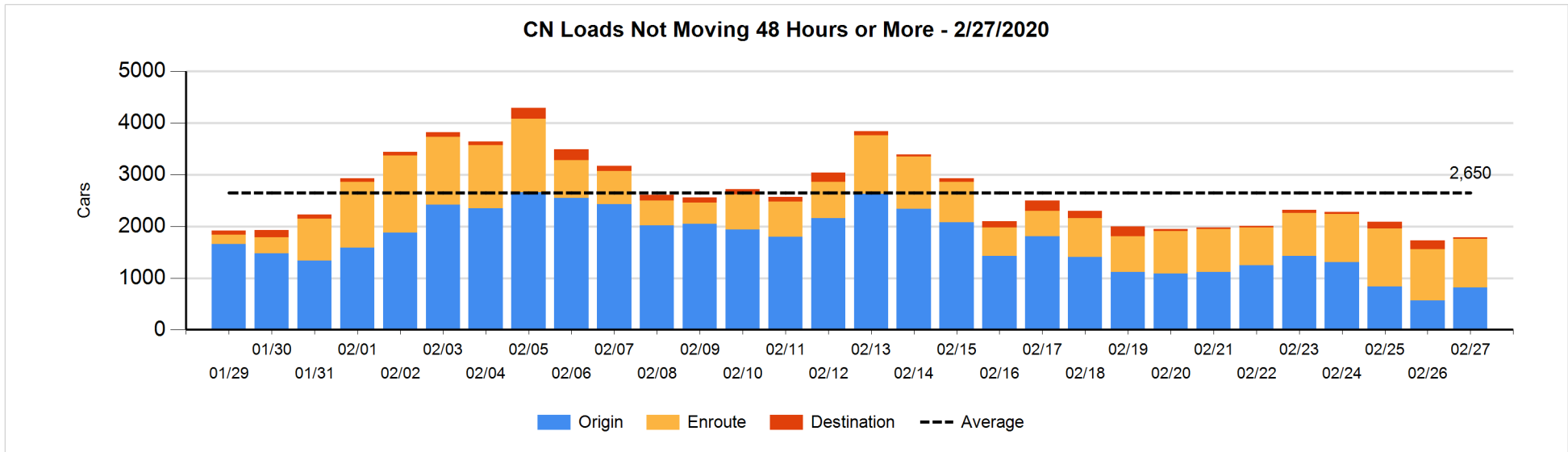


**Loads Not Moving 48 Hours or More - 2/27/2020**

	E Canada	Prince Rupert	Thunder Bay	USA/MEX	Vancouver	Total
<b>CN</b>						
Origin	99	334		40	345	818
Enroute	794	126		6	16	942
Destination	1	5	1		16	23
	894	465	1	46	377	1783
<b>CP</b>						
Origin	2			214	812	1028
Enroute	111			44	94	249
Destination	1		1	18	33	53
	114		1	276	939	1330
<b>US Rail / Short Line</b>						
Origin						
Enroute	27			19		46
Destination	1			15	33	49
	28			34	33	95

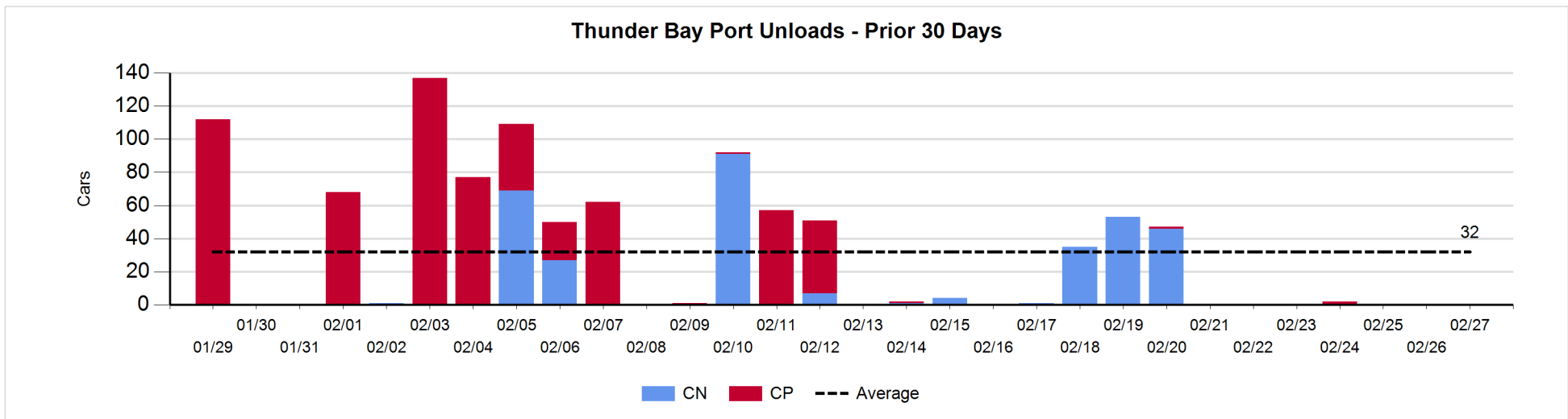
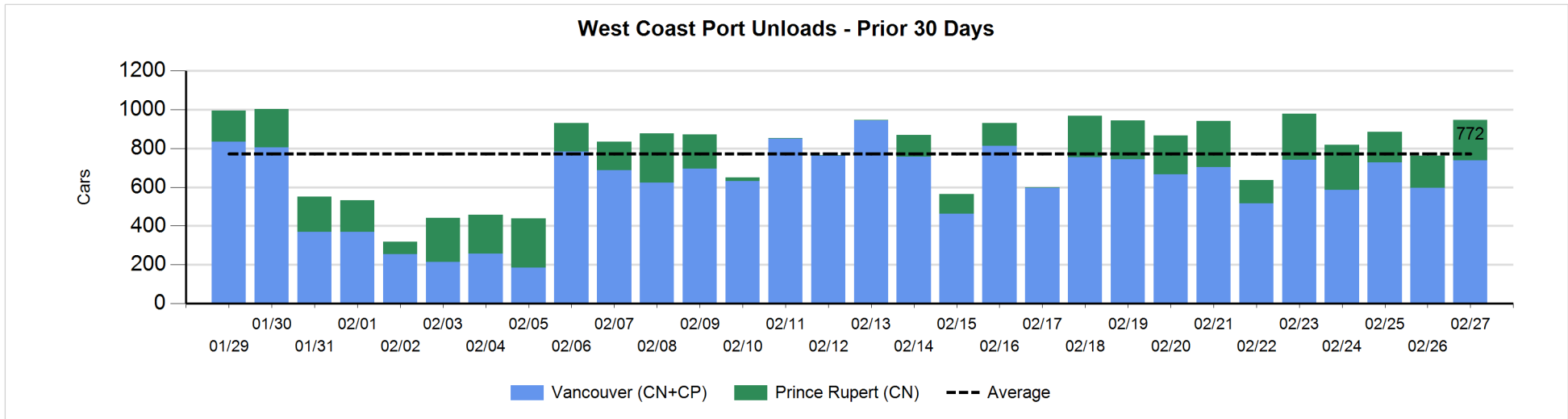
**Change in Loads Not Moving 48 Hours or More - 2/27/2020**

	E Canada	Prince Rupert	Thunder Bay	USA/MEX	Vancouver	Total
<b>CN</b>						
Origin	0	97		0	154	251
Enroute	52	-97		-2	0	-47
Destination	0	0	0		-146	-146
	52	0	0	-2	8	58
<b>CP</b>						
Origin	-1			15	-132	-118
Enroute	5			1	-4	2
Destination	1		0	-15	-8	-22
	5		0	1	-144	-138
<b>US Rail / Short Line</b>						
Origin						
Enroute	0			-1		-1
Destination	-10			4	26	20
	-10			3	26	19



Port Unloads - 2/27/2020

	Prince Rupert	Vancouver	West Coast Total	Thunder Bay	Total
CN	208	340	548		548
CP		399	399		399
	208	739	947		947





**Port Terminal Status**

**Vancouver**

Daily Activity for 2/27/2020

	Cars Arrived	Cars Received in Interchange	Cars Delivered in Interchange	Cars Placed for Unloading	Loads on Wheels at Destination As of 2/27/2020
CN	360		149	282	440
CP	473	145	3	293	460
SRY	2	7		15	46

**Port Unloads**

	02/27	02/26	Week To Date	Last Week
CN	340	280	1,420	2,179
CP	399	316	1,227	2,538
SRY	16	16	65	64

**Age Profile of Loaded Cars Waiting Placement for Unloading**

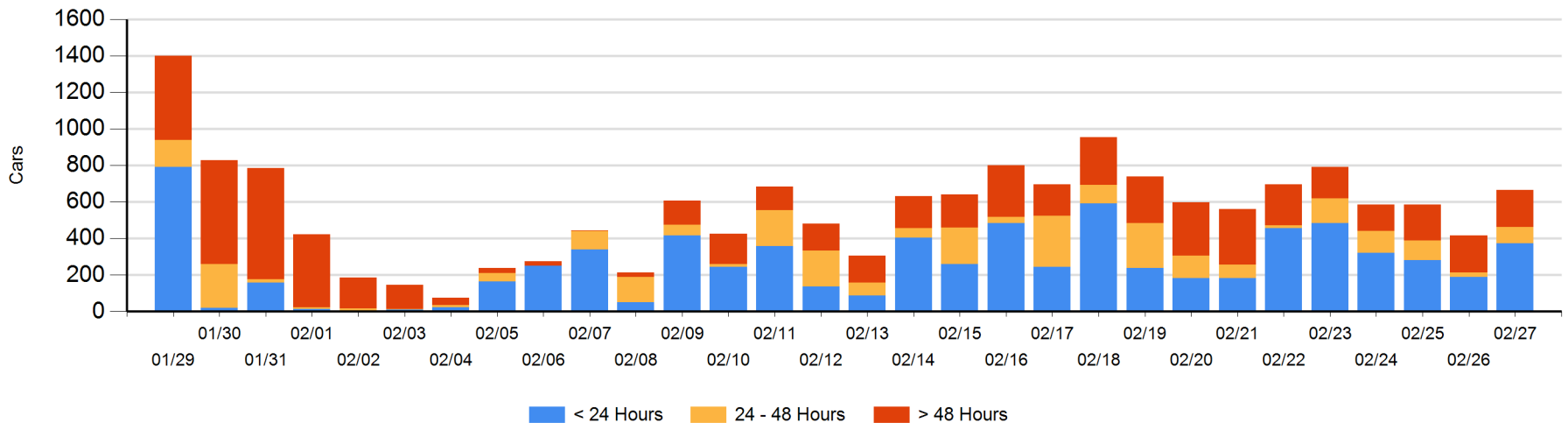
**Today**

	< 24 Hrs	24 - 48 Hrs	> 48-72 Hrs	> 72 Hrs	Total On Hand
CN	134	43	10	118	305
CP	239	48		72	359
SRY				1	1

**Change in Last 24 Hours**

	< 24 Hrs	24-48 Hrs	48 - 72 Hrs	> 72 Hrs
CN	51	20	-4	8
CP	133	48	-35	28
SRY				0

**Loaded Cars on Hand Vancouver Waiting for Placement - Last 30 Days All Railways**



**Port Terminal Status**

**Prince Rupert**

Daily Activity for 2/27/2020

	Cars Arrived	Cars Received in Interchange	Cars Delivered in Interchange	Cars Placed for Unloading	Loads on Wheels at Destination As of 2/27/2020
CN	381			239	290

**Port Unloads**

	02/27	02/26	Week To Date	Last Week
CN	208	166	764	1,216

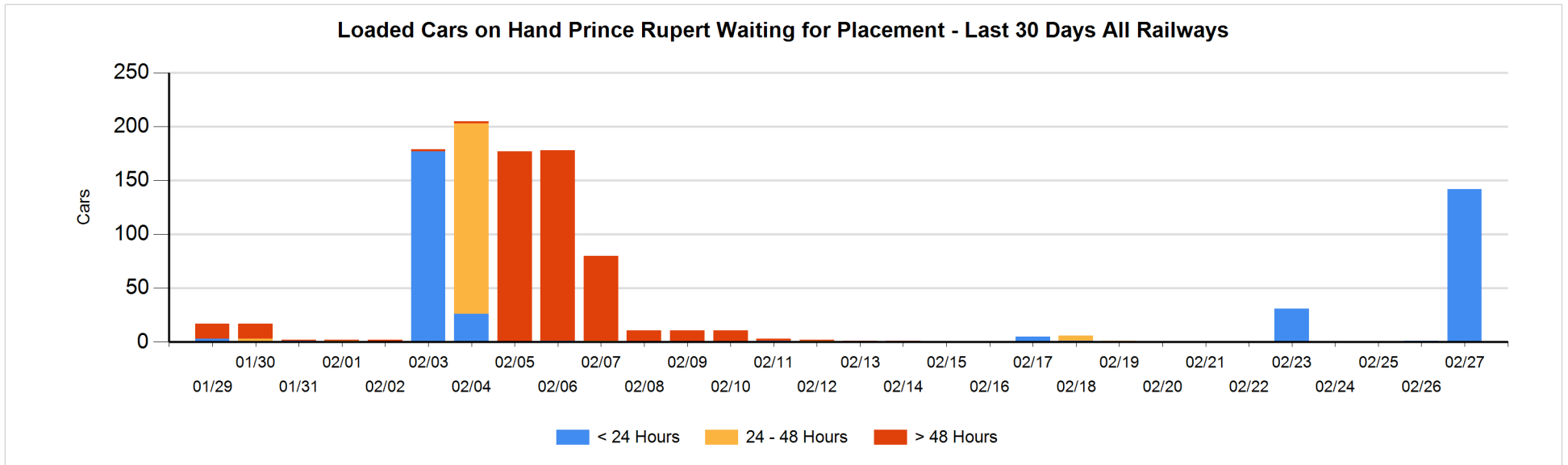
**Age Profile of Loaded Cars Waiting Placement for Unloading**

**Today**

	< 24 Hrs	24 - 48 Hrs	> 48-72 Hrs	> 72 Hrs	Total On Hand
CN	142				142

**Change in Last 24 Hours**

	< 24 Hrs	24-48 Hrs	48 - 72 Hrs	> 72 Hrs
CN	141			



**Port Terminal Status**

**Thunder Bay**

Daily Activity for 2/27/2020

	Cars Arrived	Cars Received in Interchange	Cars Delivered in Interchange	Cars Placed for Unloading	Loads on Wheels at Destination As of 2/27/2020
CN					1
CP					1

**Port Unloads**

	02/27	02/26	Week To Date	Last Week
CN				135
CP			2	1

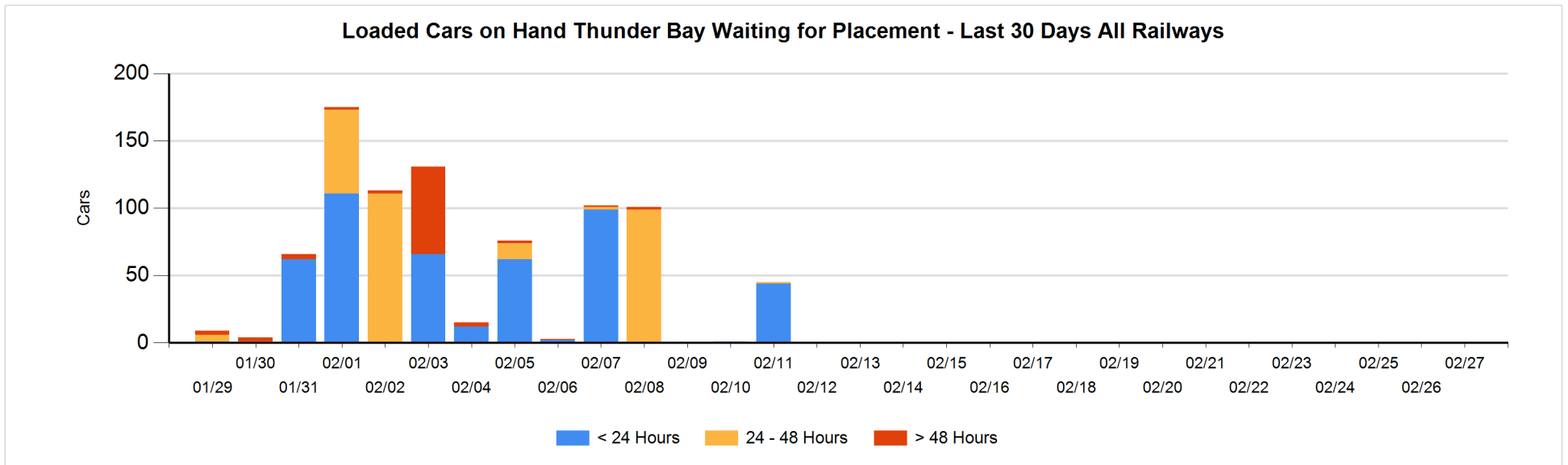
**Age Profile of Loaded Cars Waiting Placement for Unloading**

**Today**

	< 24 Hrs	24 - 48 Hrs	> 48-72 Hrs	> 72 Hrs	Total On Hand
CN					0
CP					0

**Change in Last 24 Hours**

	< 24 Hrs	24-48 Hrs	48 - 72 Hrs	> 72 Hrs
CN				
CP				



## Measurement Definitions

Loads on Wheels	<p>Count of loaded rail cars including all rail cars that have been released loaded at origin and have not been reported by the railway as unloaded at destination.</p> <p>Counts include all rail cars (hopper cars and boxcars) moving within a pipeline.</p>
Loads Not Moving	<p>Loaded rail cars for which the railways have not reported a movement event for 48 hours or more whether the rail car is at origin, enroute or at destination.</p>
Port Unloads	<p>Count of rail cars reported by railways as unloaded at the western port destinations of Vancouver, Prince Rupert and Thunder Bay.</p> <p>Unload counts include all rail cars (hopper cars and boxcars) unloaded by all receivers including major port terminals, transloaders and other receivers.</p>
Cars Arrived	<p>Count of rail cars reported as arrived at the destination railway terminal.</p>
Cars Received in Interchange	<p>Count of rail cars received in interchange by each railway within a destination railway terminal. Interchange activity is tracked for the Vancouver and Thunder Bay pipelines as applicable.</p>
Cars Delivered in Interchange	<p>Count of rail cars delivered in interchange by each railway within a destination railway terminal. Interchange activity is tracked for the Vancouver and Thunder Bay pipelines as applicable.</p>
Cars Placed for Unloading	<p>Count of rail cars reported by the railways as placed loaded at the receiver's facility for unloading.</p>
Loads on Wheels at Destination	<p>Count of rail cars that remain under load within the destination railway terminal including rail cars that have been reported as placed for unloading but not yet reported as unloaded.</p>
Waiting Placement for Unloading	<p>Count of rail cars that have been reported as arrived at the destination railway terminal but not reported as placed for unloading by the railway.</p> <p>For the Ports of Vancouver, Prince Rupert and Thunder Bay the count of rail cars waiting placement for unloading is categorized by age – i.e. the elapsed time from arrival at destination to the current report date.</p>