

## SPEED READ

- Loads on wheels increased marginally overnight, reflecting a rise in CN traffic offset by reduced CP volumes. On a net basis, volumes increased due to higher volumes in the E. Canada and Prince Rupert corridors offset by lower volumes in the Vancouver, Thunder Bay and USA/MEX corridors.
- Network fluidity deteriorated overnight, led by a rise in idle car counts on both CN and CP by 5% (+95) and 46% (+1023), respectively. The total count of cars for 4+ days on both railways increased 8% (+174) overnight - currently at 2,315 cars.
- Four days in Week 22 unloads now ahead of prior week's performance by 1,300 unloads, marking improved week over week performance at Vancouver and Prince Rupert offset by reduced unloads at Thunder Bay.

---

## Loads on Wheels

- Loads on wheels increased marginally by 1% (+106) overnight, due to higher volumes on CN offset by reduced volumes on CP - combined total at 12,617 and 6% above the trailing 30-day average.
- On a net basis, the rise in loads on wheels indicates higher volumes in the E. Canada and Prince Rupert corridors offset by lower volumes in the Vancouver, Thunder Bay and USA/MEX corridors.
- CN volumes increased for the third consecutive day, up 6% (+364) overnight, with higher volumes across all corridors other than Thunder Bay. System wide CN loads on wheels currently at 6,329 and 2% above the trailing 30-day average.
- CP volumes declined 4% (-246) overnight, driven by a decline in volumes across all corridors other than Thunder Bay. CP system wide loads on wheels now at 6,138 and 12% above the trailing 30-day average.
- Vancouver now at 7,569, declined marginally by 1% (-111) overnight, now 25% above the trailing 30-day average.
- The Prince Rupert pipeline currently at 1,430, increased 6% (+83) overnight, and 12% below the trailing 30-day average.
- Thunder Bay volumes declined 4% (-75) overnight and have now decreased for the ninth consecutive day - currently at 1,597, the lowest seen in the last 30 days, and 38% below the trailing 30-day average, with 67% of traffic moving on CP.

## Hopper Car Rationing

- No hopper car orders were cancelled by either CN or CP in week 19 and preliminary indications are that none were cancelled in week 20.

## Loads Not Moving

- **The count of cars not moving for 48+ hours increased 28% (+1,118) overnight, marking higher counts on both CN and CP. Idle car counts currently at 5,084 and 74% above the trailing 30-day average.**
- CN
  - **The count of idle cars for 48+ hours increased 5% (+95) overnight - presently at 1,823 cars.**
  - The number of cars idle for 4+ days declined 18% (-192) overnight - currently at 871 cars.
  - The count of cars not moving for 7+ days decreased 29% (-201) overnight - now at 497 cars.
  - Vancouver represents 65% of all idle cars.
  - In total 35% of all idle cars are dwelling at origin locations.
- CP
  - **CP idle car counts for 48+ hours increased for the third consecutive day, up 46% (+1023) overnight - currently at 3,261 cars, the highest seen in the last 30 days.**

- The number of cars idle for 4+ days gained 34% (+366) overnight - currently at 1,444 cars, the highest seen in the last 30 days.
- The number of cars idle for 7+ days increased 30% (+102) overnight - currently at 439 cars, the highest seen in the last 30 days.
- Vancouver accounts for 74% of all idle cars.
- In total 27% of all idle cars are dwelling at origin locations.

### **Port Performance**

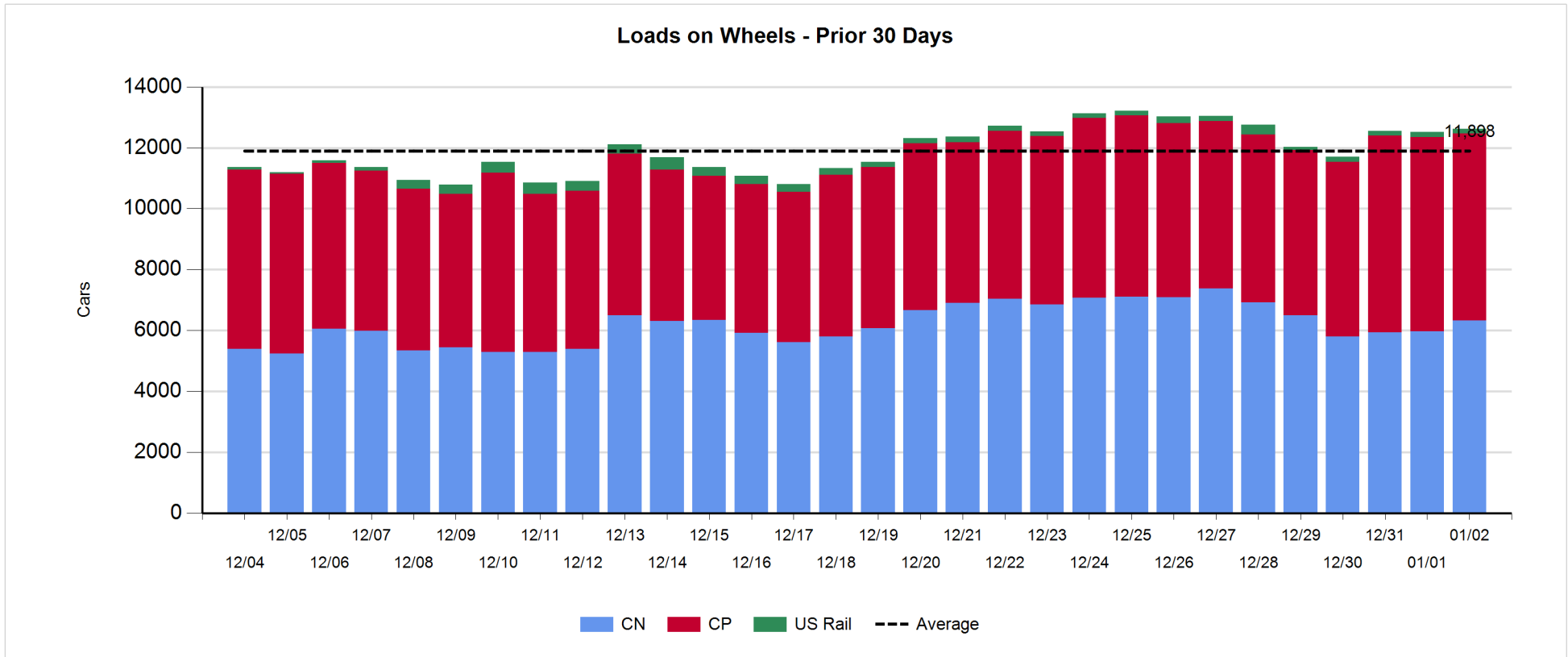
- CN and CP reported a total of 1,267 cars unloaded at the three major ports, now 12% above the trailing 30-day average. Four days in Week 22 unloads now ahead of last week's pace by 1,300 unloads, marking higher unloads at Vancouver and Prince Rupert offset by reduced unloads at Thunder Bay.
- Vancouver
  - 917 unloads reported by CN and CP at the Port of Vancouver; CN - 277 and CP - 640. Four days in Week 22 unloads are tracking ahead of last week's performance by around 1,100 unloads.
  - There are more than 2,100 cars on site at Vancouver with more than 150 cars arriving at the port in the last 24 hours.
  - CN and CP have 1,550 cars in British Columbia en route to Vancouver, with more than 800 cars at Kamloops and west, and 68% of traffic moving on CP.
- Prince Rupert
  - Prince Rupert reported 210 unloads, now ahead of last week's unloads after four days by 300 unloads.
  - Loads on wheels remain above 1,000 cars - presently at 1,430 cars.
  - There are more than 200 cars west of Jasper en route to Prince Rupert.
  - There are 150 cars on site at Prince Rupert with zero cars arriving at the port in the last 24 hours.
- Thunder Bay
  - 140 unloads were reported at Thunder Bay yesterday. Four days in Week 22 unloads are tracking behind last week's pace by less than 100 unloads.
  - There are 1,600 cars on site at Thunder Bay with more than 250 cars arriving at the port in the prior 24 hours.
  - There are less than 50 cars enroute to Thunder Bay from Winnipeg and east.

**Daily Loads on Wheels - 1/2/2020**

	E Canada	Prince Rupert	Thunder Bay	USA/MEX	Vancouver	Total
CN	1,227	1,430	533	242	2,897	6,329
CP	72		1,064	373	4,629	6,138
Short Line	15				43	58
US Rail				92		92
	1,314	1,430	1,597	707	7,569	12,617

**Change in Loads on Wheels - Prior 24 Hours**

	E Canada	Prince Rupert	Thunder Bay	USA/MEX	Vancouver	Total
CN	270	83	-90	20	81	364
CP	-6		15	-59	-196	-246
Short Line	13				4	17
US Rail				-29		-29
	277	83	-75	-68	-111	106

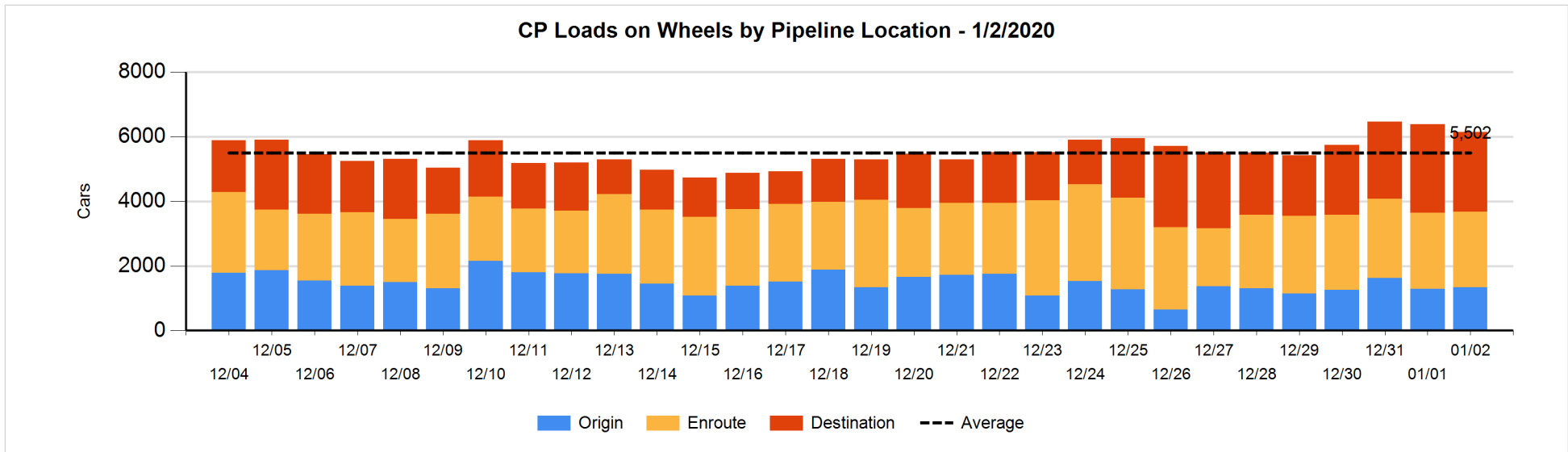
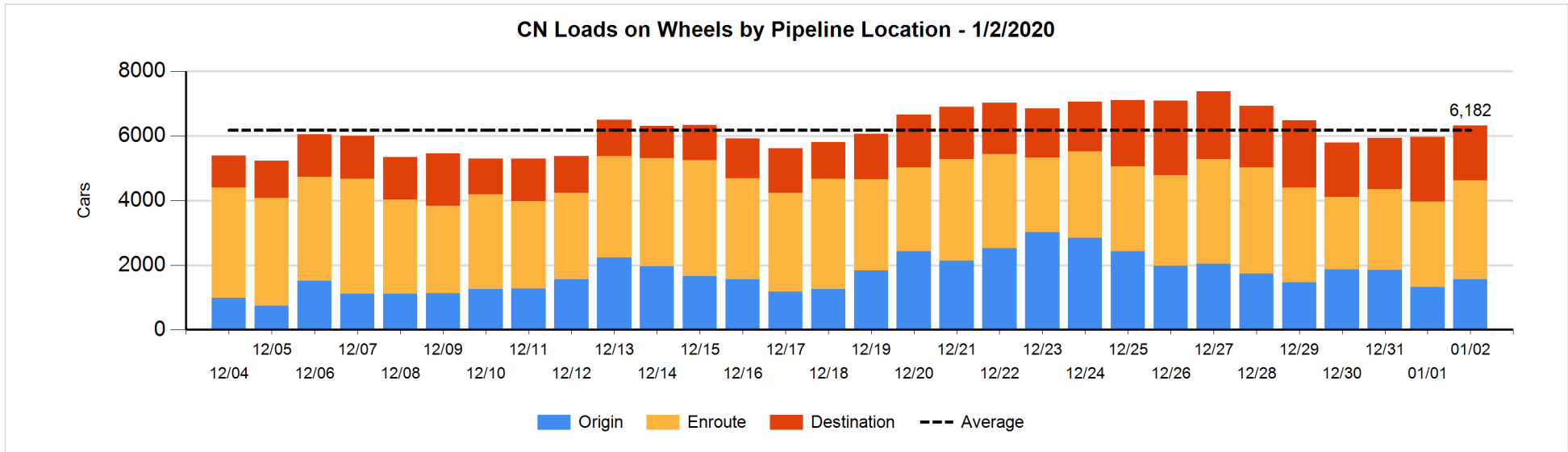


**Daily Loads on Wheels By Pipeline Location - 1/2/2020**

	E Canada	Prince Rupert	Thunder Bay	USA/MEX	Vancouver	Total
CN						
Origin	269	391		35	867	1,562
Enroute	753	883	1	182	1,246	3,065
Destination	205	156	532	25	784	1,702
	1,227	1,430	533	242	2,897	6,329
CP						
Origin	2		1	97	1,238	1,338
Enroute	57		3	182	2,101	2,343
Destination	13		1,060	94	1,290	2,457
	72		1,064	373	4,629	6,138
US Rail / Short Line						
Origin						
Enroute	11			50		61
Destination	4			42	43	89
	15			92	43	150

**Change in Daily Loads on Wheels By Pipeline Location - Prior 24 Hours**

	E Canada	Prince Rupert	Thunder Bay	USA/MEX	Vancouver	Total
CN						
Origin	160	-7		35	48	236
Enroute	42	299	-98	-17	192	418
Destination	68	-209	8	2	-159	-290
	270	83	-90	20	81	364
CP						
Origin	0		0	44	6	50
Enroute	-1		-112	-117	213	-17
Destination	-5		127	14	-415	-279
	-6		15	-59	-196	-246
US Rail / Short Line						
Origin						
Enroute	11			10		21
Destination	2			-39	4	-33
	13			-29	4	-12

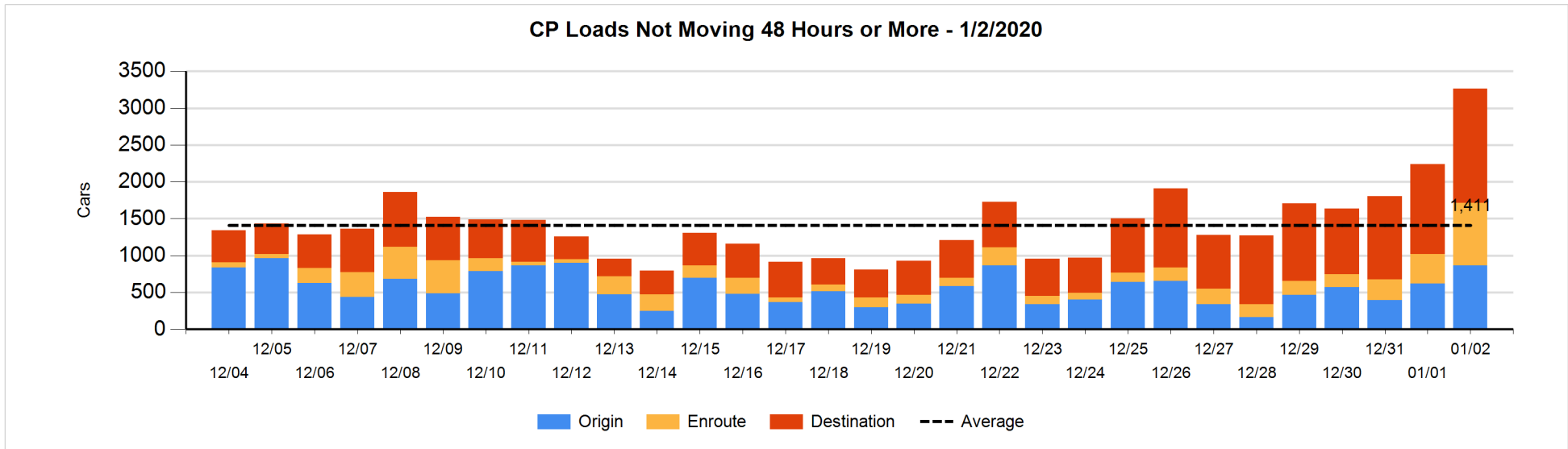
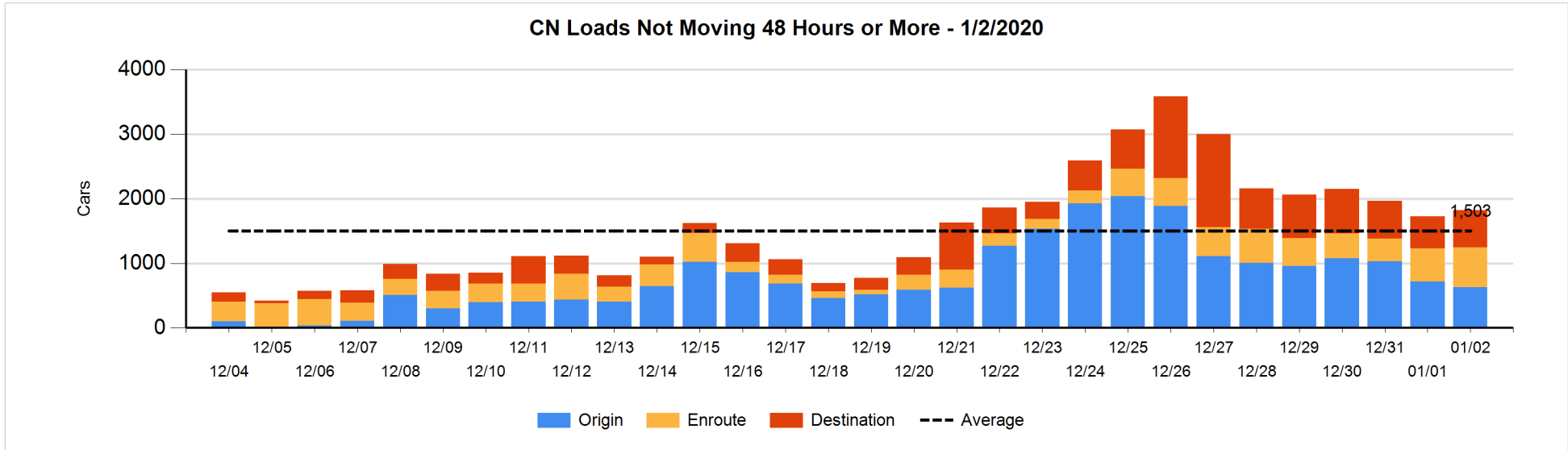


**Loads Not Moving 48 Hours or More - 1/2/2020**

	E Canada	Prince Rupert	Thunder Bay	USA/MEX	Vancouver	Total
<b>CN</b>						
Origin	12	98			519	629
Enroute	207	61	1	28	317	614
Destination	89	10	113	12	356	580
	308	169	114	40	1192	1823
<b>CP</b>						
Origin			1	50	816	867
Enroute	3		3	11	829	846
Destination	13		712	46	777	1548
	16		716	107	2422	3261
<b>US Rail / Short Line</b>						
Origin						
Enroute				15		15
Destination	1			28	35	64
	1			43	35	79

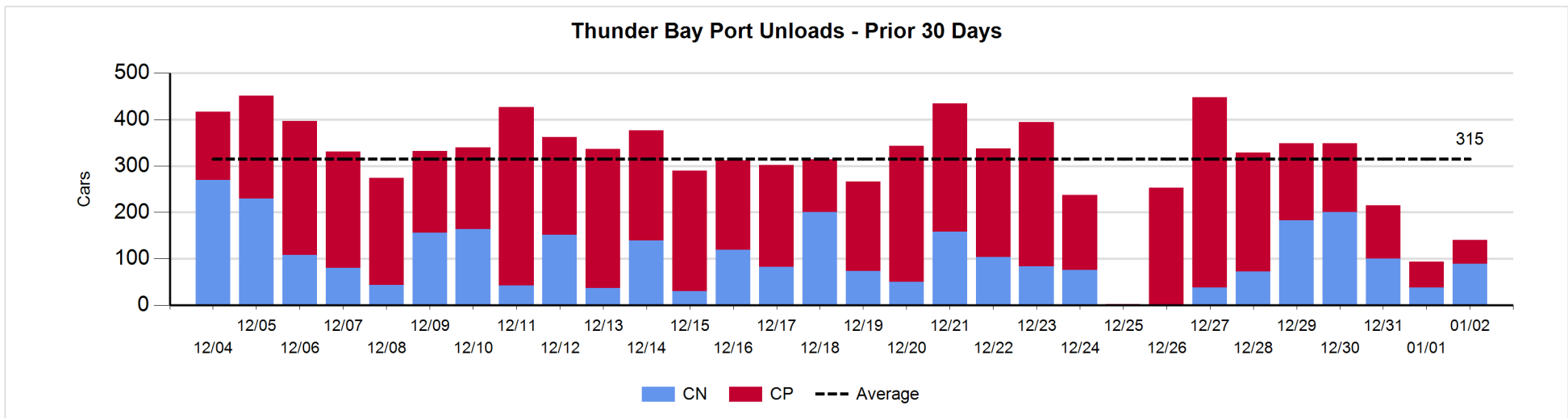
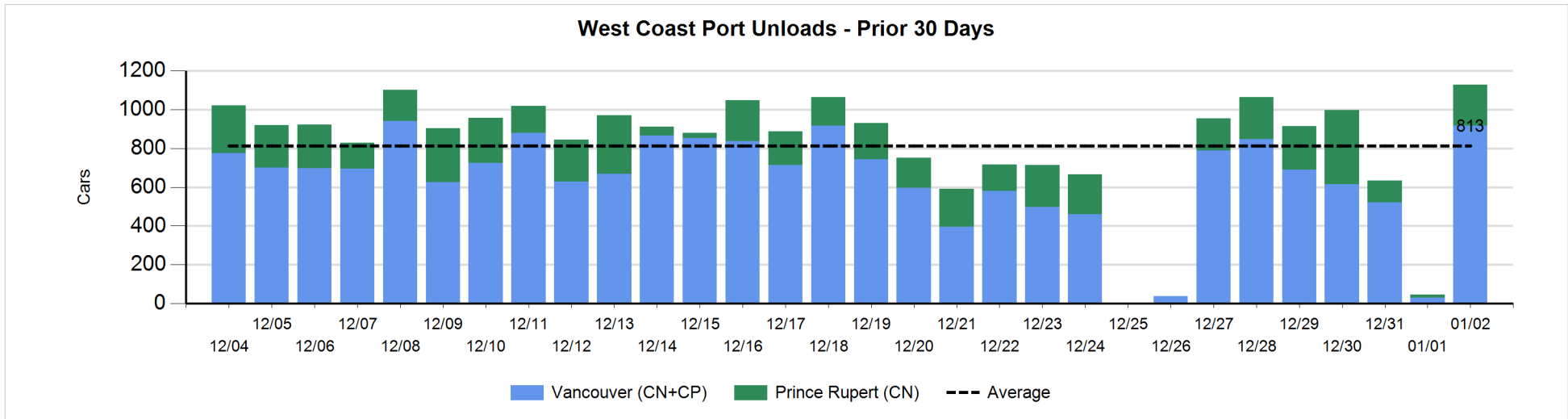
**Change in Loads Not Moving 48 Hours or More - 1/2/2020**

	E Canada	Prince Rupert	Thunder Bay	USA/MEX	Vancouver	Total
<b>CN</b>						
Origin	12	-206			106	-88
Enroute	115	-2	0	-14	-1	98
Destination	2	8	13	-1	63	85
	129	-200	13	-15	168	95
<b>CP</b>						
Origin			0	47	202	249
Enroute	3		0	-16	459	446
Destination	13		90	16	209	328
	16		90	47	870	1,023
<b>US Rail / Short Line</b>						
Origin						
Enroute				0		0
Destination	-1			-47	2	-46
	-1			-47	2	-46



**Port Unloads - 1/2/2020**

	Prince Rupert	Vancouver	West Coast Total	Thunder Bay	Total
CN	210	277	487	89	576
CP		640	640	51	691
	210	917	1,127	140	1,267





**Port Terminal Status**

**Vancouver**

Daily Activity for 1/2/2020

	Cars Arrived	Cars Received in Interchange	Cars Delivered in Interchange	Cars Placed for Unloading	Loads on Wheels at Destination As of 1/2/2020
CN	59		103	80	784
CP	116	103	3	218	1,293
SRY		3		6	43

**Port Unloads**

	01/02	01/01	Week To Date	Last Week
CN	277	15	710	1,548
CP	640	14	1,372	1,776
SRY	6		18	40

**Age Profile of Loaded Cars Waiting Placement for Unloading**

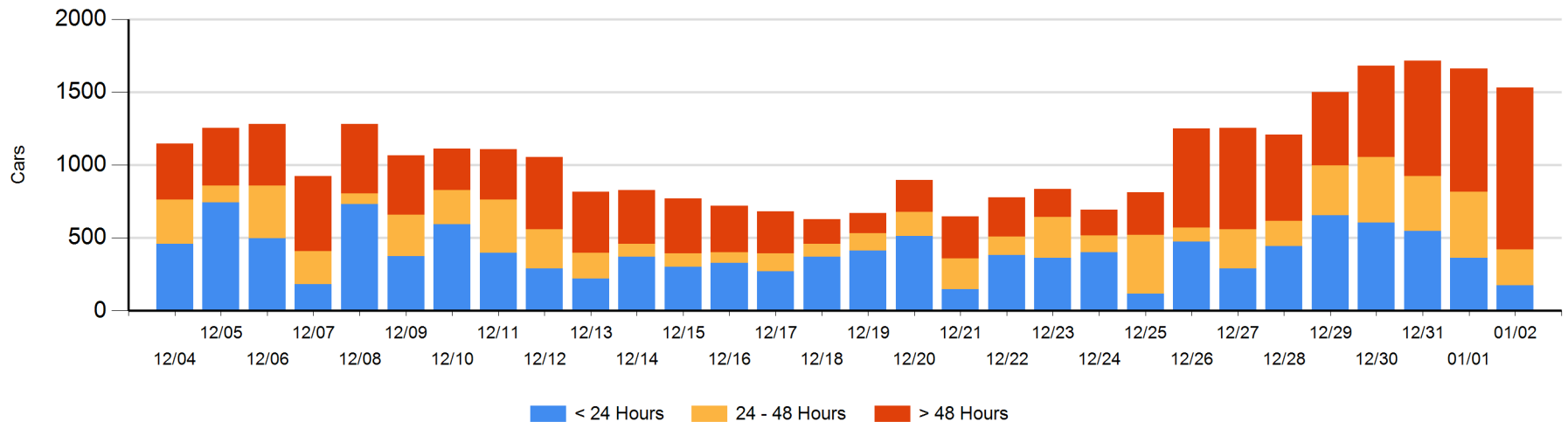
**Today**

	< 24 Hrs	24 - 48 Hrs	> 48-72 Hrs	> 72 Hrs	Total On Hand
CN	59	112	36	374	581
CP	116	132	406	284	938
SRY				11	11

**Change in Last 24 Hours**

	< 24 Hrs	24-48 Hrs	48 - 72 Hrs	> 72 Hrs
CN	-73	65	-183	140
CP	-115	-274	281	26
SRY				0

**Loaded Cars on Hand Vancouver Waiting for Placement - Last 30 Days All Railways**



**Port Terminal Status**

**Prince Rupert**

**Daily Activity for 1/2/2020**

Cars Arrived	Cars Received in Interchange	Cars Delivered in Interchange	Cars Placed for Unloading	Loads on Wheels at Destination As of 1/2/2020
				156

**Port Unloads**

	01/02	01/01	Week To Date	Last Week
CN	210	17	722	1,026

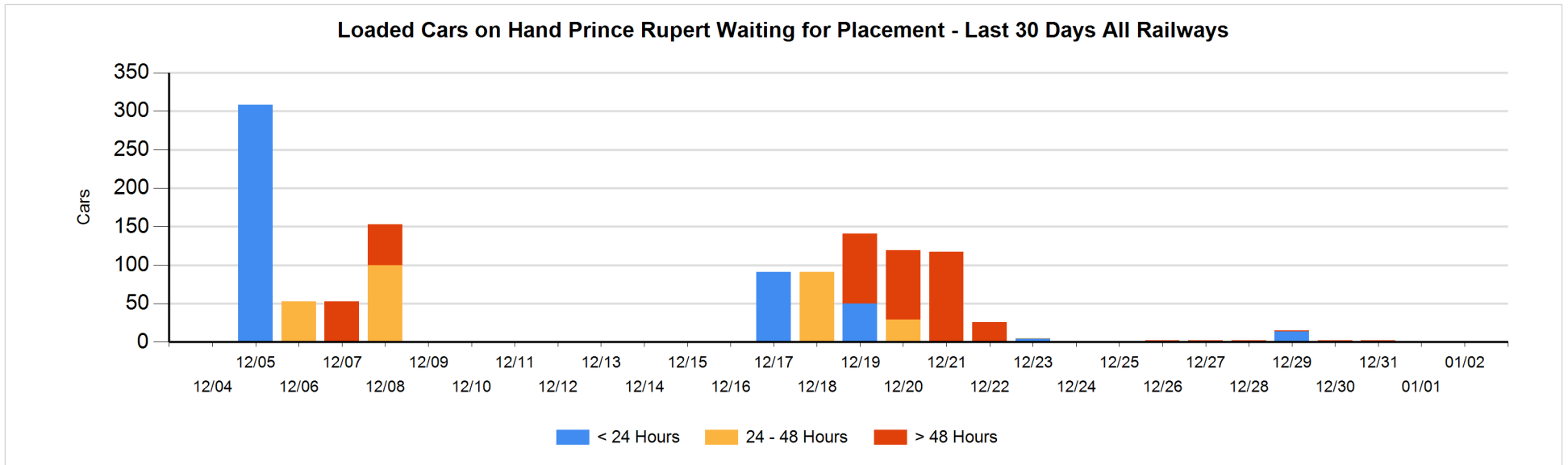
**Age Profile of Loaded Cars Waiting Placement for Unloading**

**Today**

< 24 Hrs	24 - 48 Hrs	> 48-72 Hrs	> 72 Hrs	Total On Hand
				0

**Change in Last 24 Hours**

< 24 Hrs	24-48 Hrs	48 - 72 Hrs	> 72 Hrs



**Port Terminal Status**

**Thunder Bay**

Daily Activity for 1/2/2020

	Cars Arrived	Cars Received in Interchange	Cars Delivered in Interchange	Cars Placed for Unloading	Loads on Wheels at Destination As of 1/2/2020
CN	98				532
CP	175			140	1,060

**Port Unloads**

	01/02	01/01	Week To Date	Last Week
CN	89	38	427	454
CP	51	56	371	1,558

**Age Profile of Loaded Cars Waiting Placement for Unloading**

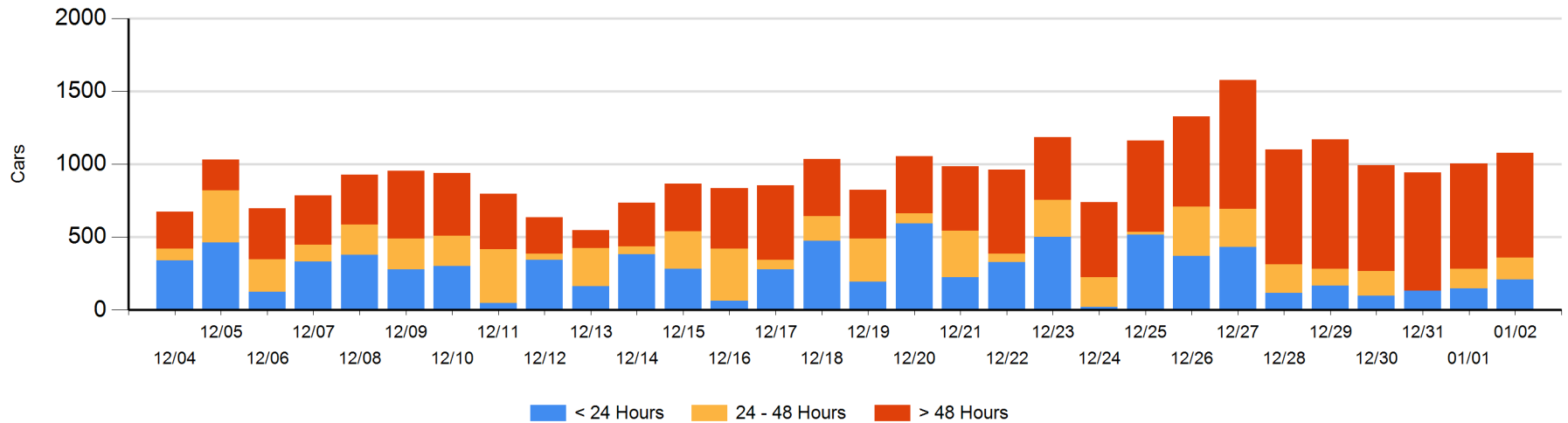
**Today**

	< 24 Hrs	24 - 48 Hrs	> 48-72 Hrs	> 72 Hrs	Total On Hand
CN	98	14		163	275
CP	112	134	95	463	804

**Change in Last 24 Hours**

	< 24 Hrs	24-48 Hrs	48 - 72 Hrs	> 72 Hrs
CN	84	14		-13
CP	-22	0	95	-82

**Loaded Cars on Hand Thunder Bay Waiting for Placement - Last 30 Days All Railways**



## Measurement Definitions

Loads on Wheels	<p>Count of loaded rail cars including all rail cars that have been released loaded at origin and have not been reported by the railway as unloaded at destination.</p> <p>Counts include all rail cars (hopper cars and boxcars) moving within a pipeline.</p>
Loads Not Moving	<p>Loaded rail cars for which the railways have not reported a movement event for 48 hours or more whether the rail car is at origin, enroute or at destination.</p>
Port Unloads	<p>Count of rail cars reported by railways as unloaded at the western port destinations of Vancouver, Prince Rupert and Thunder Bay.</p> <p>Unload counts include all rail cars (hopper cars and boxcars) unloaded by all receivers including major port terminals, transloaders and other receivers.</p>
Cars Arrived	<p>Count of rail cars reported as arrived at the destination railway terminal.</p>
Cars Received in Interchange	<p>Count of rail cars received in interchange by each railway within a destination railway terminal. Interchange activity is tracked for the Vancouver and Thunder Bay pipelines as applicable.</p>
Cars Delivered in Interchange	<p>Count of rail cars delivered in interchange by each railway within a destination railway terminal. Interchange activity is tracked for the Vancouver and Thunder Bay pipelines as applicable.</p>
Cars Placed for Unloading	<p>Count of rail cars reported by the railways as placed loaded at the receiver's facility for unloading.</p>
Loads on Wheels at Destination	<p>Count of rail cars that remain under load within the destination railway terminal including rail cars that have been reported as placed for unloading but not yet reported as unloaded.</p>
Waiting Placement for Unloading	<p>Count of rail cars that have been reported as arrived at the destination railway terminal but not reported as placed for unloading by the railway.</p> <p>For the Ports of Vancouver, Prince Rupert and Thunder Bay the count of rail cars waiting placement for unloading is categorized by age – i.e. the elapsed time from arrival at destination to the current report date.</p>