

SPEED READ

- Loads on wheels fell overnight, reflecting lower CP traffic offset by a rise in CN volumes. On a net basis, volumes decreased due to lower volumes in the Thunder Bay, Vancouver and E. Canada corridors offset by higher traffic in the Prince Rupert and USA/MEX corridors.
- Network fluidity deteriorated overnight, led by a rise in idle car counts on CN by 44% (+550) offset by a decline in idle car counts on CP by 10% (-257). The total count of cars for 4+ days on both railways decreased 2% (-47) overnight - currently at 2,257 cars.
- Week 22 unloads finished ahead of prior week's performance by 650 unloads, reflecting improved week over week performance at Vancouver and Prince Rupert offset by lower unloads at Thunder Bay.

=====

Loads on Wheels

- Loads on wheels fell 2% (-256) overnight, due to lower traffic on CP offset by higher volumes on CN - combined total at 11,748 and 2% below the trailing 30-day average.
- On a net basis, the decline in loads on wheels reflects lower volumes in the Thunder Bay, Vancouver and E. Canada corridors offset by higher traffic in the Prince Rupert and USA/MEX corridors.
- CN volumes increased 4% (+262) overnight, with higher volumes in the Vancouver and Prince Rupert corridors offset by reduced traffic in the Thunder Bay, E. Canada and USA/MEX corridors. System wide CN loads on wheels currently at 6,300 and 1% above the trailing 30-day average.
- CP volumes decreased 11% (-628) overnight, driven by a decline in volumes across all corridors. CP system wide loads on wheels currently at 5,177 and 6% below the trailing 30-day average.
- Vancouver presently at 7,396, fell 2% (-166) overnight, now 18% above the trailing 30-day average.
- The Prince Rupert pipeline currently at 1,589, gained 6% (+83) overnight, and 2% below the trailing 30-day average.
- Thunder Bay volumes declined 14% (-175) overnight - now at 1,049, the lowest seen in the last 30 days, and 56% below the trailing 30-day average, with 72% of traffic moving on CP.

Hopper Car Rationing

- CN cancelled 52 hopper car orders in grain week 20. No hopper cars were rationed or cancelled by CP in week 20.

Loads Not Moving

- **The count of cars not moving for 48+ hours increased 7% (+293) overnight, reflecting higher counts on CN offset by reduced counts on CP. Idle car counts presently at 4,216 and 34% above the trailing 30-day average.**
- CN
 - **The count of idle cars for 48+ hours gained 44% (+550) overnight - presently at 1,791 cars.**
 - The number of cars idle for 4+ days gained 9% (+60) overnight - presently at 721 cars.
 - The count of cars not moving for 7+ days fell 8% (-27) overnight and have now decreased for the fifth consecutive day - currently at 332 cars.
 - Vancouver represents 71% of all idle cars.
 - In total 65% of all idle cars are dwelling at origin locations.
- CP
 - **CP idle car counts for 48+ hours decreased for the third consecutive day, down 10% (-257) overnight - currently at 2,425 cars.**
 - The number of cars idle for 4+ days decreased 7% (-107) overnight - currently at 1,536 cars.

- The number of cars idle for 7+ days decreased 7% (-34) overnight - currently at 423 cars.
- Vancouver accounts for 74% of all idle cars.
- In total 35% of all idle cars are dwelling at origin locations.

Port Performance

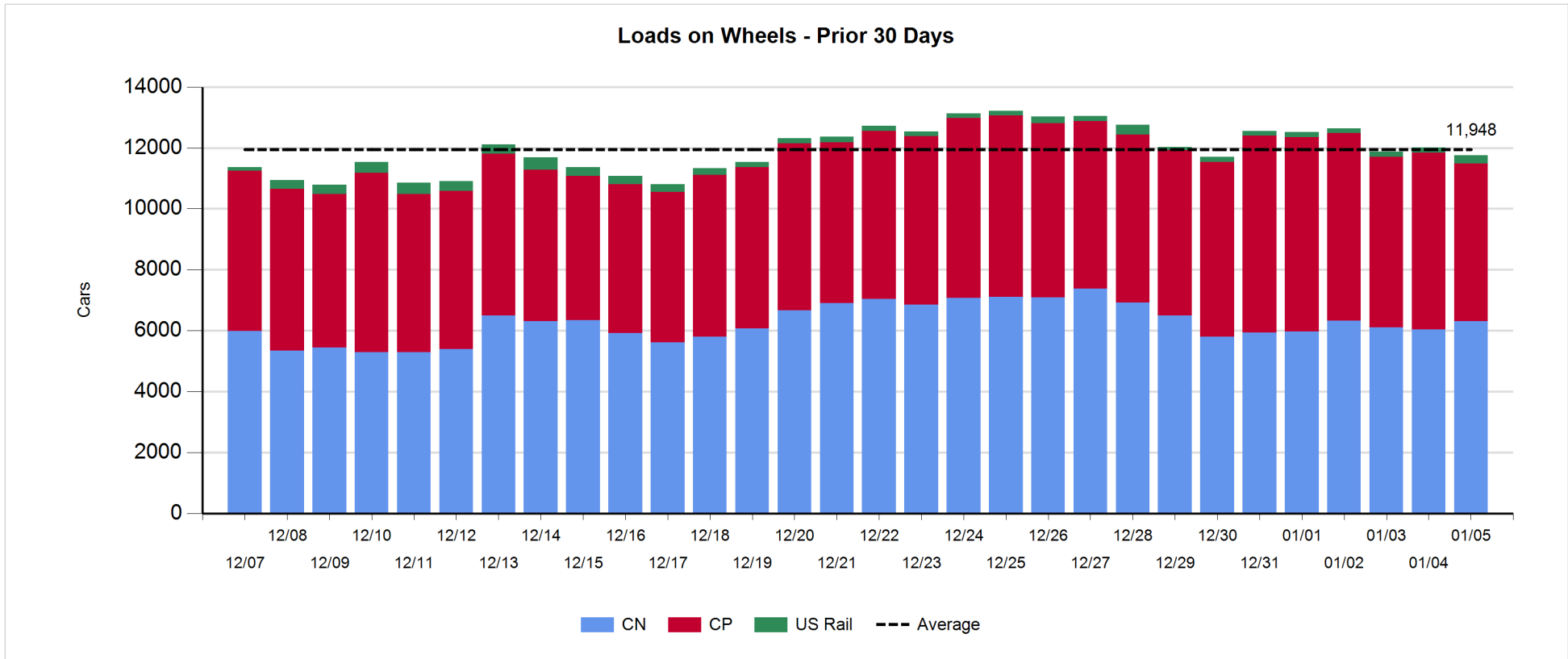
- CN and CP reported a total of 1,022 cars unloaded at the three major ports, 8% below the trailing 30-day average. Week 22 unloads finished ahead of last week's pace by 650 unloads, reflecting higher unloads at Vancouver and Prince Rupert offset by lower unloads at Thunder Bay.
- Vancouver
 - 633 unloads reported by CN and CP at the Port of Vancouver; CN - 252 and CP - 381. Week 22 unloads finished ahead of last week's performance by nearly 1,000 unloads.
 - There are 1,250 cars on site at Vancouver with 600 cars arriving at the port in the last 24 hours.
 - CN and CP have 1,650 cars in British Columbia en route to Vancouver, with more than 800 cars at Kamloops and west, and 62% of traffic moving on CP.
- Prince Rupert
 - Prince Rupert reported 215 unloads, finished ahead of last week's unloads by 200 unloads.
 - Loads on wheels remain above 1,000 cars - currently at 1,589 cars.
 - There are 700 cars west of Jasper en route to Prince Rupert.
 - There are more than 150 cars on site at Prince Rupert with fewer than 200 cars arriving at the port in the last 24 hours.
- Thunder Bay
 - 174 unloads were reported at Thunder Bay yesterday. Week 22 unloads finished behind last week's pace by more than 500 unloads.
 - There are 1,050 cars on site at Thunder Bay with more than 100 cars arriving at the port in the prior 24 hours.
 - There are no cars en route to Thunder Bay from Winnipeg and east.

Daily Loads on Wheels - 1/5/2020

	E Canada	Prince Rupert	Thunder Bay	USA/MEX	Vancouver	Total
CN	940	1,589	292	257	3,222	6,300
CP	63		757	222	4,135	5,177
Short Line	16				39	55
US Rail				216		216
	1,019	1,589	1,049	695	7,396	11,748

Change in Loads on Wheels - Prior 24 Hours

	E Canada	Prince Rupert	Thunder Bay	USA/MEX	Vancouver	Total
CN	-14	83	-69	-8	270	262
CP	-6		-106	-79	-437	-628
Short Line	-1				1	0
US Rail				110		110
	-21	83	-175	23	-166	-256

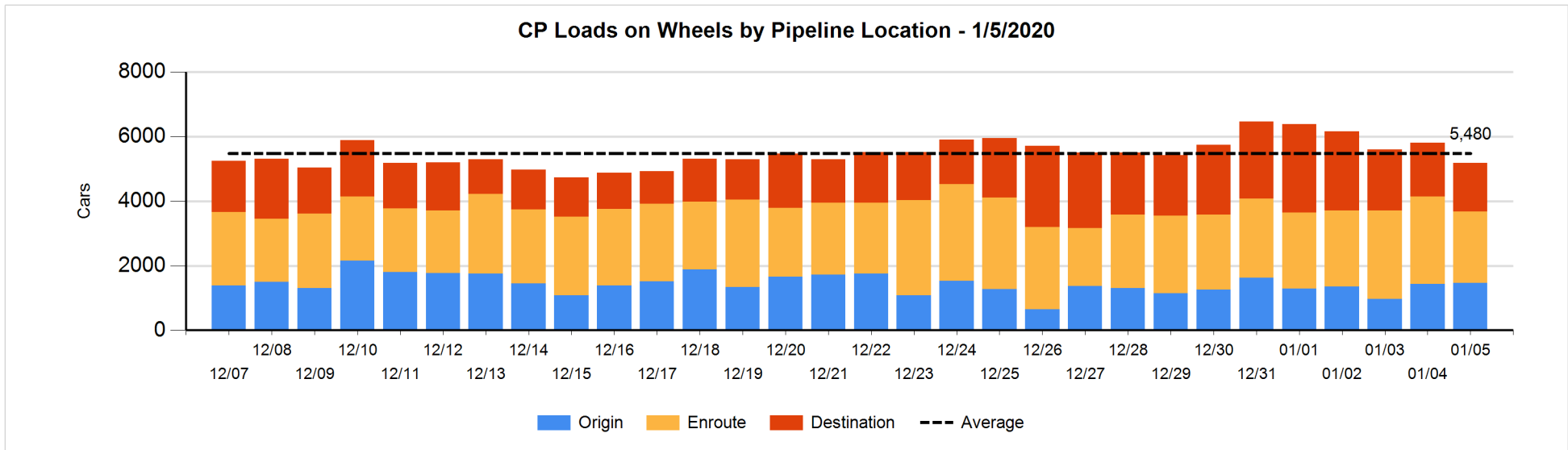
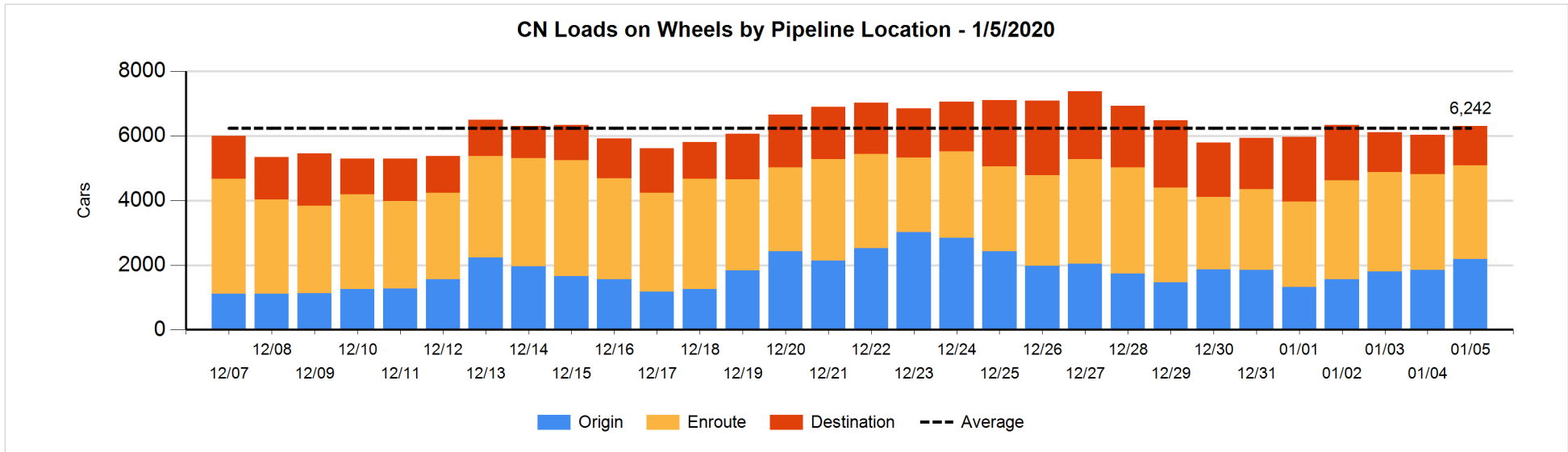


Daily Loads on Wheels By Pipeline Location - 1/5/2020

	E Canada	Prince Rupert	Thunder Bay	USA/MEX	Vancouver	Total
CN						
Origin	1	612	1	34	1,533	2,181
Enroute	791	802		192	1,125	2,910
Destination	148	175	291	31	564	1,209
	940	1,589	292	257	3,222	6,300
CP						
Origin	2		2	73	1,388	1,465
Enroute	8		2	109	2,092	2,211
Destination	53		753	40	655	1,501
	63		757	222	4,135	5,177
US Rail / Short Line						
Origin						
Enroute				50		50
Destination	16			166	39	221
	16			216	39	271

Change in Daily Loads on Wheels By Pipeline Location - Prior 24 Hours

	E Canada	Prince Rupert	Thunder Bay	USA/MEX	Vancouver	Total
CN						
Origin	-1	302	0	-1	37	337
Enroute	-37	-189	-1	-7	172	-62
Destination	24	-30	-68	0	61	-13
	-14	83	-69	-8	270	262
CP						
Origin	0		-1	0	26	25
Enroute	-46		-110	20	-362	-498
Destination	40		5	-99	-101	-155
	-6		-106	-79	-437	-628
US Rail / Short Line						
Origin						
Enroute	-1			7		6
Destination	0			103	1	104
	-1			110	1	110

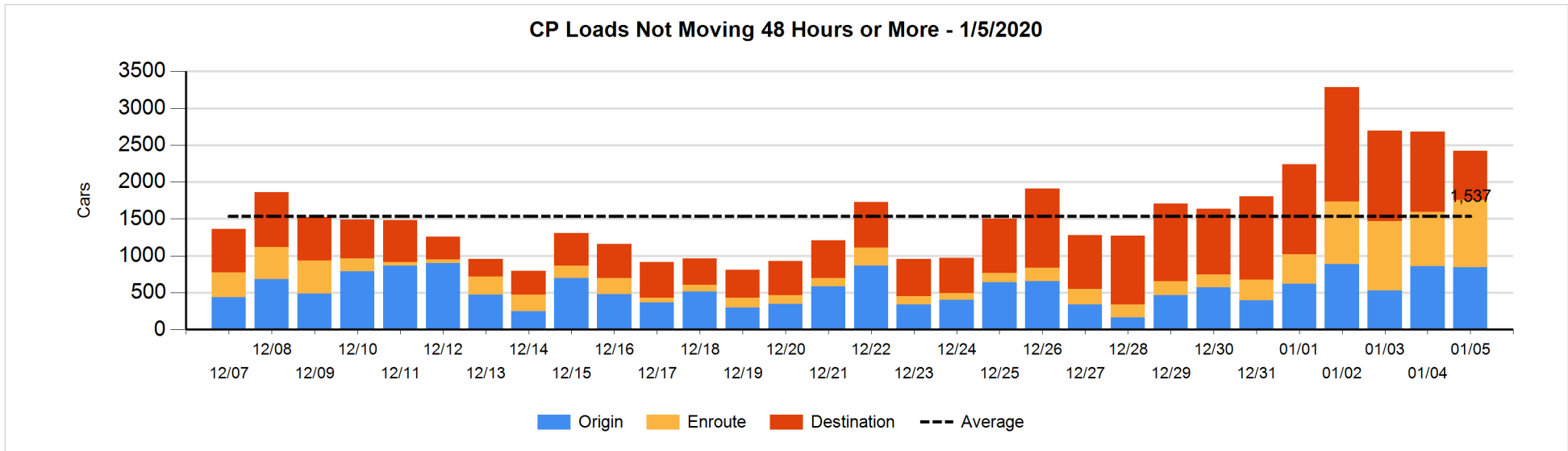
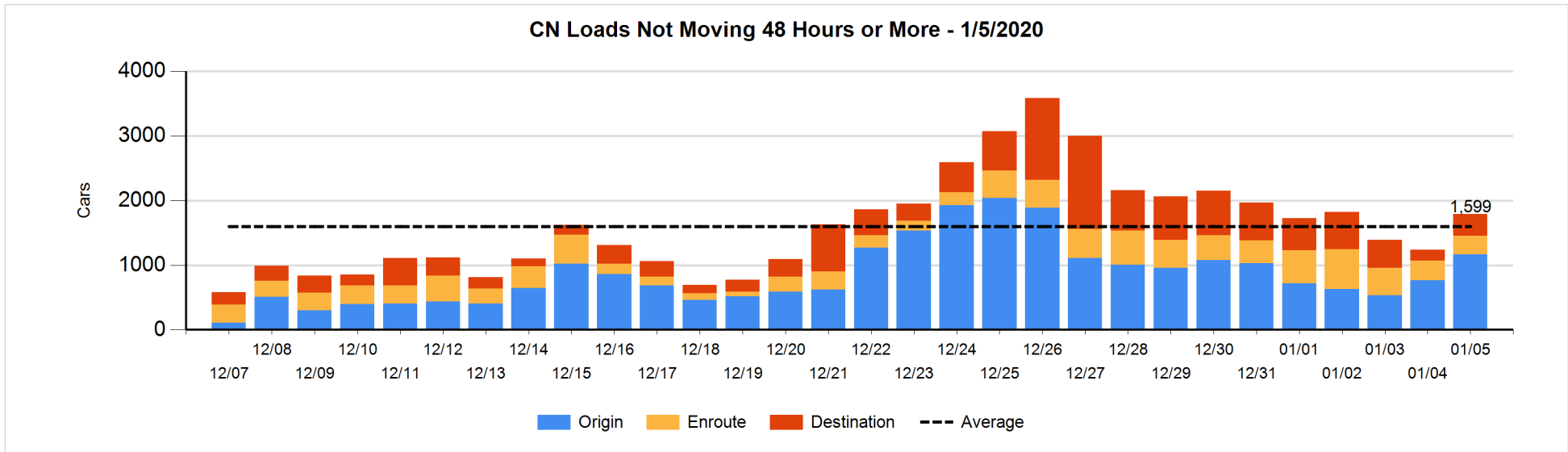


Loads Not Moving 48 Hours or More - 1/5/2020

	E Canada	Prince Rupert	Thunder Bay	USA/MEX	Vancouver	Total
CN						
Origin	1	99		34	1030	1164
Enroute	27	32		29	199	287
Destination	67		193	29	51	340
	95	131	193	92	1280	1791
CP						
Origin	2		2	73	767	844
Enroute			1	1	911	913
Destination	6		502	40	120	668
	8		505	114	1798	2425
US Rail / Short Line						
Origin						
Enroute				16		16
Destination	16			59	21	96
	16			75	21	112

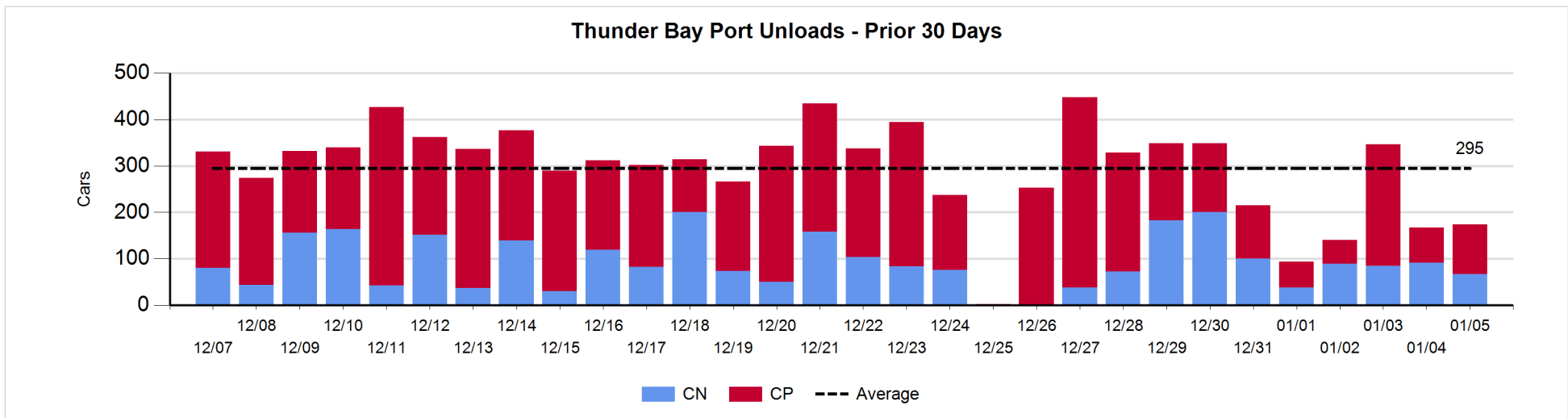
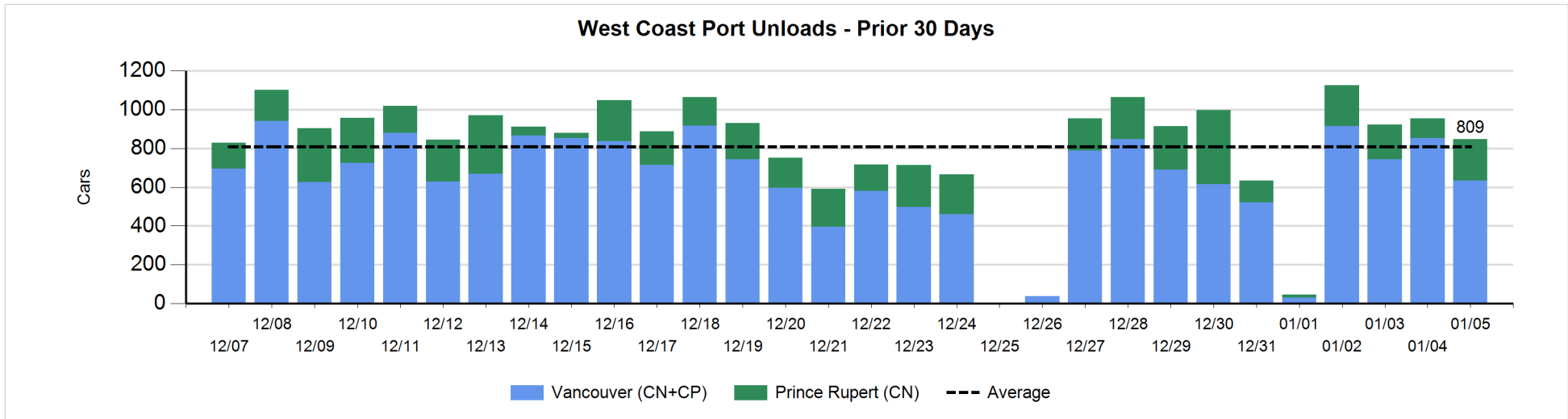
Change in Loads Not Moving 48 Hours or More - 1/5/2020

	E Canada	Prince Rupert	Thunder Bay	USA/MEX	Vancouver	Total
CN						
Origin	1	0		31	364	396
Enroute	-9	-5	-1	2	0	-13
Destination	-6		173	17	-17	167
	-14	-5	172	50	347	550
CP						
Origin	2		1	0	-14	-11
Enroute	-11		-1	0	182	170
Destination	-7		-193	15	-231	-416
	-16		-193	15	-63	-257
US Rail / Short Line						
Origin						
Enroute	-1			2		1
Destination	16			32	-6	42
	15			34	-6	43



Port Unloads - 1/5/2020

	Prince Rupert	Vancouver	West Coast Total	Thunder Bay	Total
CN	215	252	467	67	534
CP		381	381	107	488
	215	633	848	174	1,022



Port Terminal Status

Vancouver

Daily Activity for 1/5/2020

	Cars Arrived	Cars Received in Interchange	Cars Delivered in Interchange	Cars Placed for Unloading	Loads on Wheels at Destination As of 1/5/2020
CN	311	116	7	209	564
CP	289	1	125	472	658
SRY		15		12	39

Port Unloads

	01/05	01/04	Week To Date	Last Week
CN	252	403	1,714	1,548
CP	381	449	2,594	1,776
SRY	6	10	42	40

Age Profile of Loaded Cars Waiting Placement for Unloading

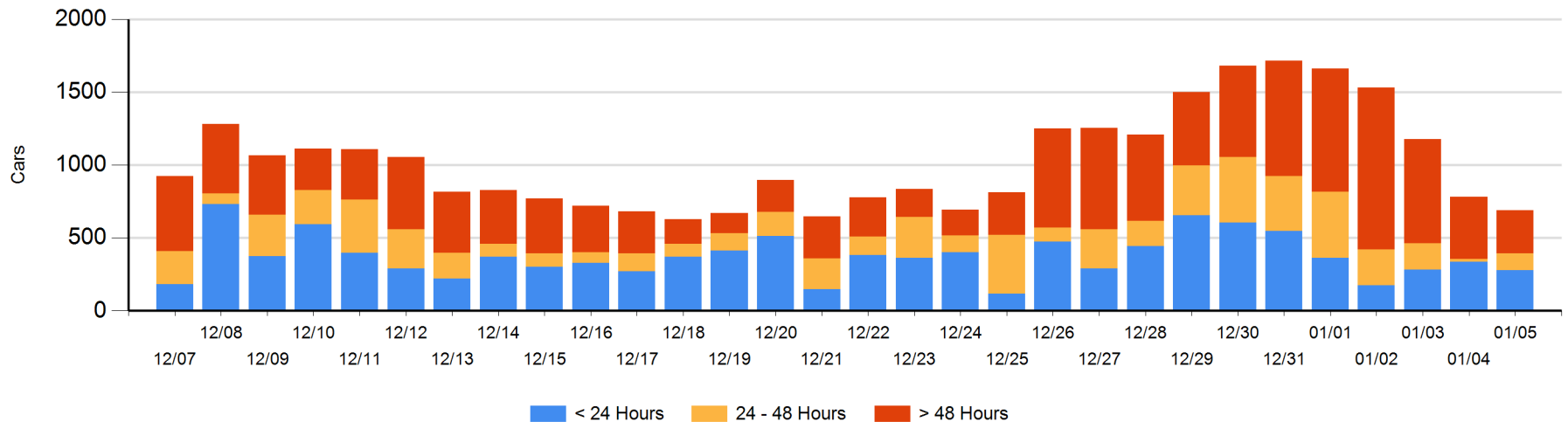
Today

	< 24 Hrs	24 - 48 Hrs	> 48-72 Hrs	> 72 Hrs	Total On Hand
CN	220	70	14	32	336
CP	58	46	4	243	351
SRY				1	1

Change in Last 24 Hours

	< 24 Hrs	24-48 Hrs	48 - 72 Hrs	> 72 Hrs
CN	5	55	-8	-22
CP	-63	42	-38	-57
SRY				-6

Loaded Cars on Hand Vancouver Waiting for Placement - Last 30 Days All Railways



Port Terminal Status

Prince Rupert

Daily Activity for 1/5/2020

	Cars Arrived	Cars Received in Interchange	Cars Delivered in Interchange	Cars Placed for Unloading	Loads on Wheels at Destination As of 1/5/2020
CN	185			185	175

Port Unloads

	01/05	01/04	Week To Date	Last Week
CN	215	103	1,219	1,026

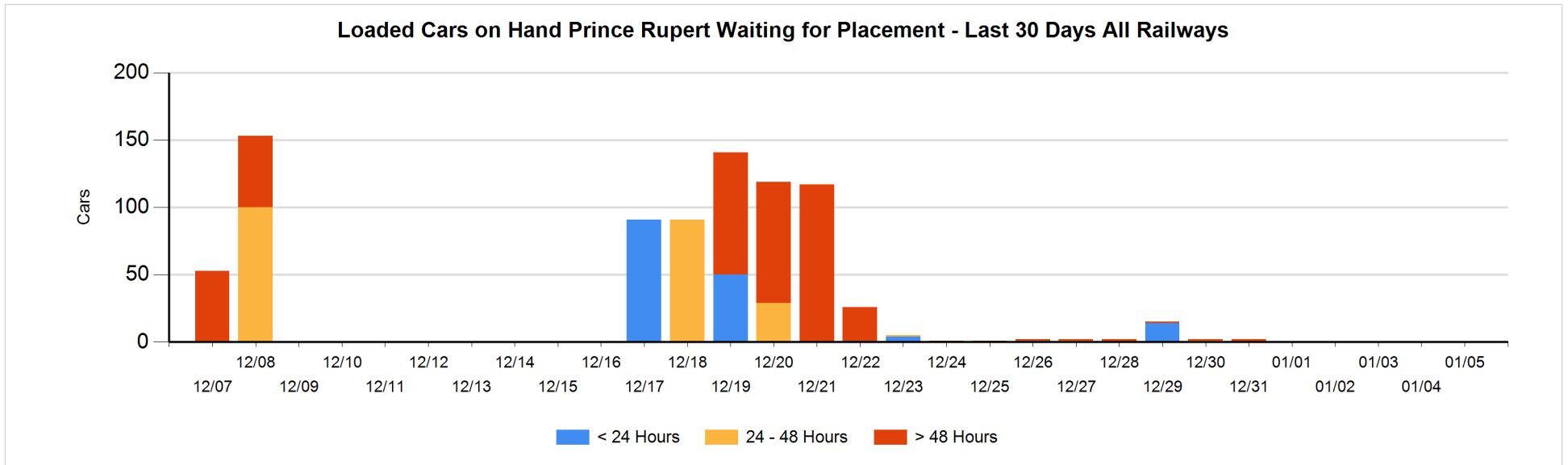
Age Profile of Loaded Cars Waiting Placement for Unloading

Today

	< 24 Hrs	24 - 48 Hrs	> 48-72 Hrs	> 72 Hrs	Total On Hand
CN					0

Change in Last 24 Hours

	< 24 Hrs	24-48 Hrs	48 - 72 Hrs	> 72 Hrs
CN				



Port Terminal Status

Thunder Bay

Daily Activity for 1/5/2020

	Cars Arrived	Cars Received in Interchange	Cars Delivered in Interchange	Cars Placed for Unloading	Loads on Wheels at Destination As of 1/5/2020
CN				133	292
CP	111			136	753

Port Unloads

	01/05	01/04	Week To Date	Last Week
CN	67	91	670	454
CP	107	76	815	1,558

Age Profile of Loaded Cars Waiting Placement for Unloading

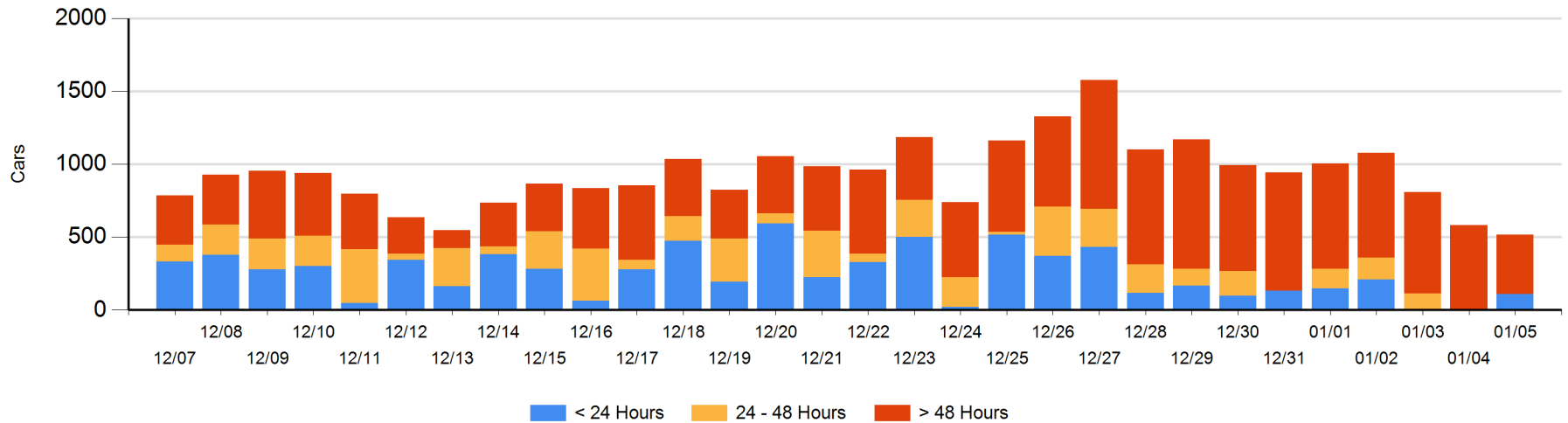
Today

	< 24 Hrs	24 - 48 Hrs	> 48-72 Hrs	> 72 Hrs	Total On Hand
CN				21	21
CP	111		1	385	497

Change in Last 24 Hours

	< 24 Hrs	24-48 Hrs	48 - 72 Hrs	> 72 Hrs
CN				-19
CP	111	-1	-111	-45

Loaded Cars on Hand Thunder Bay Waiting for Placement - Last 30 Days All Railways



Measurement Definitions

Loads on Wheels	<p>Count of loaded rail cars including all rail cars that have been released loaded at origin and have not been reported by the railway as unloaded at destination.</p> <p>Counts include all rail cars (hopper cars and boxcars) moving within a pipeline.</p>
Loads Not Moving	<p>Loaded rail cars for which the railways have not reported a movement event for 48 hours or more whether the rail car is at origin, enroute or at destination.</p>
Port Unloads	<p>Count of rail cars reported by railways as unloaded at the western port destinations of Vancouver, Prince Rupert and Thunder Bay.</p> <p>Unload counts include all rail cars (hopper cars and boxcars) unloaded by all receivers including major port terminals, transloaders and other receivers.</p>
Cars Arrived	<p>Count of rail cars reported as arrived at the destination railway terminal.</p>
Cars Received in Interchange	<p>Count of rail cars received in interchange by each railway within a destination railway terminal. Interchange activity is tracked for the Vancouver and Thunder Bay pipelines as applicable.</p>
Cars Delivered in Interchange	<p>Count of rail cars delivered in interchange by each railway within a destination railway terminal. Interchange activity is tracked for the Vancouver and Thunder Bay pipelines as applicable.</p>
Cars Placed for Unloading	<p>Count of rail cars reported by the railways as placed loaded at the receiver's facility for unloading.</p>
Loads on Wheels at Destination	<p>Count of rail cars that remain under load within the destination railway terminal including rail cars that have been reported as placed for unloading but not yet reported as unloaded.</p>
Waiting Placement for Unloading	<p>Count of rail cars that have been reported as arrived at the destination railway terminal but not reported as placed for unloading by the railway.</p> <p>For the Ports of Vancouver, Prince Rupert and Thunder Bay the count of rail cars waiting placement for unloading is categorized by age – i.e. the elapsed time from arrival at destination to the current report date.</p>