

SPEED READ

- Loads on wheels decreased overnight, reflecting a decline in both CN and CP volumes. On a net basis, volumes fell due to reduced volumes across all corridors other than E. Canada.
- Network fluidity deteriorated overnight, led by a rise in idle car counts on both CN and CP by 11% (+221) and 39% (+408), respectively. The total count of cars for 4+ days on both railways fell 2% (-26) overnight - presently at 1,591 cars.
- Week 23 unloads finished ahead of prior week's performance by 100 unloads, marking improved week over week performance at Vancouver offset by lower unloads at Prince Rupert and Thunder Bay.

=====

Loads on Wheels

- Loads on wheels decreased 4% (-500) overnight, due to lower traffic on both CN and CP - combined total at 10,934 and 8% below the trailing 30-day average.
- On a net basis, the decline in loads on wheels indicates reduced volumes across all corridors other than E. Canada.
- CN volumes fell 7% (-440) overnight, with lower volumes in the Vancouver, Prince Rupert and USA/MEX corridors offset by higher traffic in the E. Canada and Thunder Bay corridors. System wide CN loads on wheels currently at 5,976 and 6% below the trailing 30-day average.
- CP volumes decreased marginally by 1% (-48) overnight, driven by a decline in volumes across all corridors. CP system wide loads on wheels presently at 4,796 and 10% below the trailing 30-day average.
- Vancouver now at 6,377, fell 5% (-317) overnight, now 2% below the trailing 30-day average.
- The Prince Rupert pipeline currently at 1,700, fell for the third consecutive day, down 8% (-148) overnight, and 1% above the trailing 30-day average.
- Thunder Bay volumes decreased 3% (-27) overnight - currently at 812 and 58% below the trailing 30-day average, with 59% of traffic moving on CP.

Hopper Car Rationing

- CP cancelled 25 hopper car orders in Week 22 while CN cancelled 7 hopper car orders.

Loads Not Moving

- **The count of cars not moving for 48+ hours gained 21% (+629) overnight, reflecting higher counts on both CN and CP. Idle car counts now at 3,637 and 6% above the trailing 30-day average.**
- CN
 - **The count of idle cars for 48+ hours increased 11% (+221) overnight - currently at 2,194 cars.**
 - The number of cars idle for 4+ days increased 4% (+41) overnight - presently at 1,066 cars.
 - The count of cars not moving for 7+ days increased 48% (+173) overnight - now at 530 cars.
 - Vancouver represents 45% of all idle cars.
 - In total 64% of all idle cars are dwelling at origin locations.
- CP
 - **CP idle car counts for 48+ hours gained 39% (+408) overnight - currently at 1,443 cars.**
 - The number of cars idle for 4+ days decreased 11% (-67) overnight - now at 525 cars.
 - The number of cars idle for 7+ days fell 2% (-6) overnight and have now decreased for the third consecutive day - currently at 357 cars.
 - Vancouver accounts for 80% of all idle cars.

- In total 66% of all idle cars are dwelling at origin locations.

Port Performance

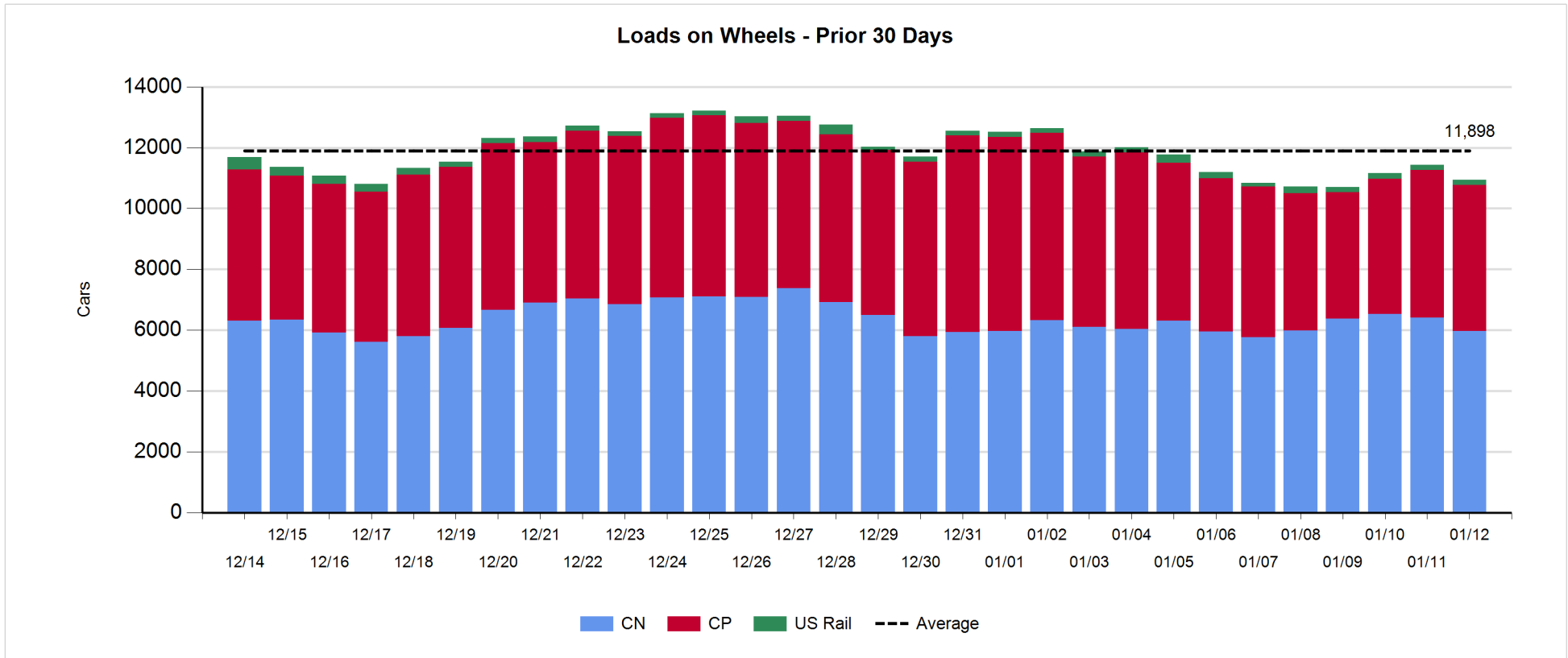
- CN and CP reported a total of 924 cars unloaded at the three major ports, 11% below the trailing 30-day average. Week 23 unloads finished ahead of last week's pace by 100 unloads, marking higher unloads at Vancouver offset by lower unloads at Prince Rupert and Thunder Bay.
- Vancouver
 - 637 unloads reported by CN and CP at the Port of Vancouver; CN - 304 and CP - 333. Week 23 unloads finished ahead of last week's performance by more than 600 unloads.
 - There are 1,750 cars on site at Vancouver with less than 600 cars arriving at the port in the last 24 hours.
 - CN and CP have more than 900 cars in British Columbia en route to Vancouver, with more than 350 cars at Kamloops and west, and 62% of traffic moving on CP.
- Prince Rupert
 - Prince Rupert reported 227 unloads, finished behind last week's unloads by fewer than 300 unloads.
 - Loads on wheels remain above 1,000 cars - presently at 1,700 cars.
 - There are fewer than 400 cars west of Jasper en route to Prince Rupert.
 - There are 21 cars on site at Prince Rupert with 100 cars arriving at the port in the last 24 hours.
- Thunder Bay
 - 60 unloads were reported at Thunder Bay yesterday. Week 23 unloads ended behind last week's pace by 250 unloads.
 - There are 500 cars on site at Thunder Bay with 150 cars arriving at the port in the prior 24 hours.
 - There are 100 cars en route to Thunder Bay from Winnipeg and east.

Daily Loads on Wheels - 1/12/2020

	E Canada	Prince Rupert	Thunder Bay	USA/MEX	Vancouver	Total
CN	1,164	1,700	335	216	2,561	5,976
CP	231		477	289	3,799	4,796
Short Line	28				17	45
US Rail				117		117
	1,423	1,700	812	622	6,377	10,934

Change in Loads on Wheels - Prior 24 Hours

	E Canada	Prince Rupert	Thunder Bay	USA/MEX	Vancouver	Total
CN	26	-148	2	-13	-307	-440
CP	-1		-29	-2	-16	-48
Short Line	0				6	6
US Rail				-18		-18
	25	-148	-27	-33	-317	-500

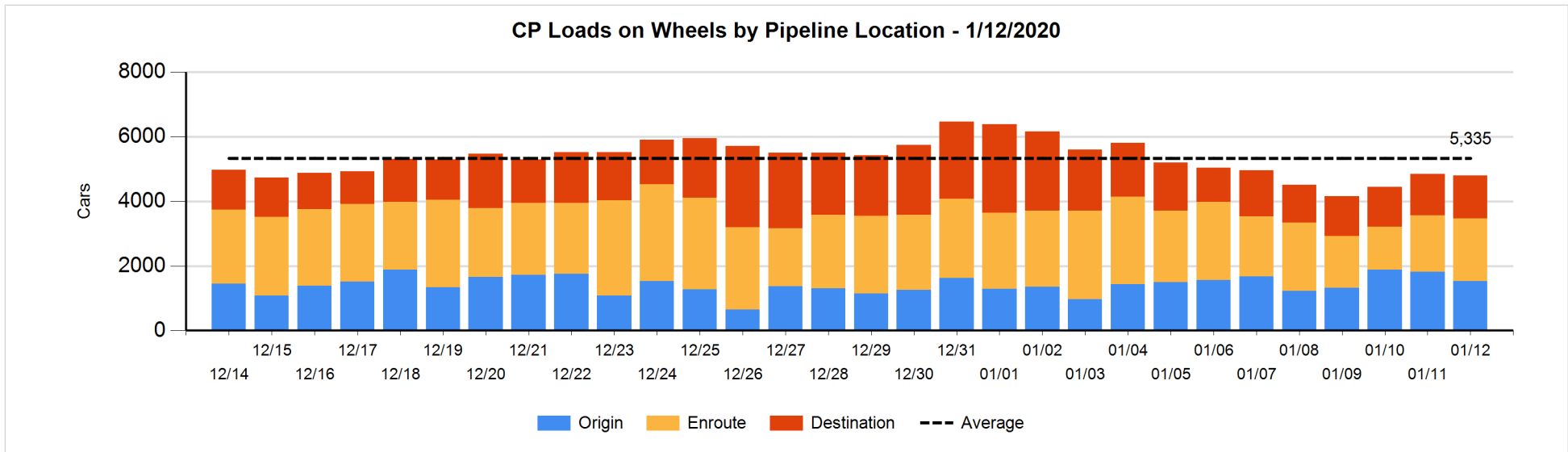
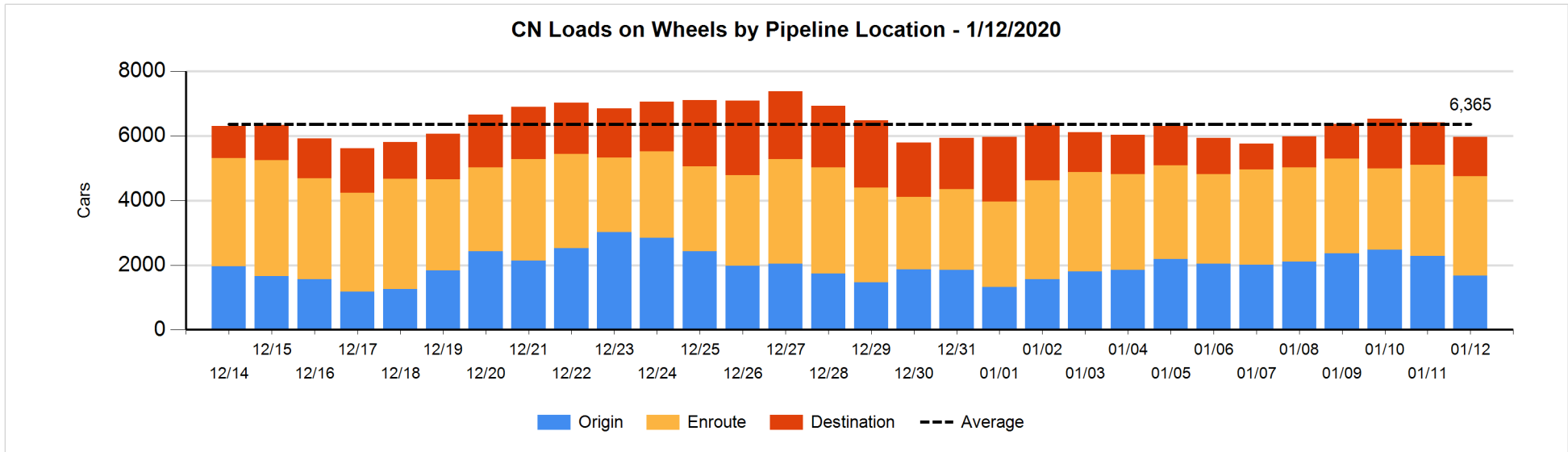


Daily Loads on Wheels By Pipeline Location - 1/12/2020

	E Canada	Prince Rupert	Thunder Bay	USA/MEX	Vancouver	Total
CN						
Origin	65	719	105	40	740	1,669
Enroute	942	960	95	151	926	3,074
Destination	157	21	135	25	895	1,233
	1,164	1,700	335	216	2,561	5,976
CP						
Origin	2			75	1,457	1,534
Enroute	229		110	104	1,499	1,942
Destination			367	110	843	1,320
	231		477	289	3,799	4,796
US Rail / Short Line						
Origin						
Enroute				81		81
Destination	28			36	17	81
	28			117	17	162

Change in Daily Loads on Wheels By Pipeline Location - Prior 24 Hours

	E Canada	Prince Rupert	Thunder Bay	USA/MEX	Vancouver	Total
CN						
Origin	-110	-228	0	-31	-245	-614
Enroute	113	198	-1	19	-82	247
Destination	23	-118	3	-1	20	-73
	26	-148	2	-13	-307	-440
CP						
Origin	0			-100	-188	-288
Enroute	-1		-112	45	260	192
Destination			83	53	-88	48
	-1		-29	-2	-16	-48
US Rail / Short Line						
Origin						
Enroute				8		8
Destination	0			-26	6	-20
	0			-18	6	-12

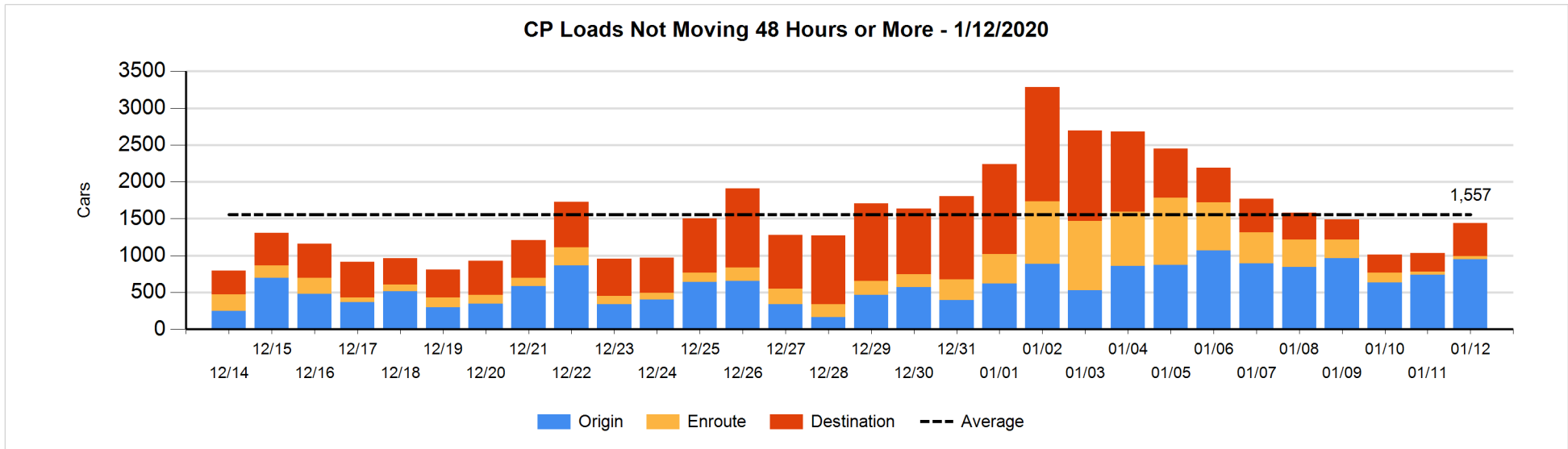
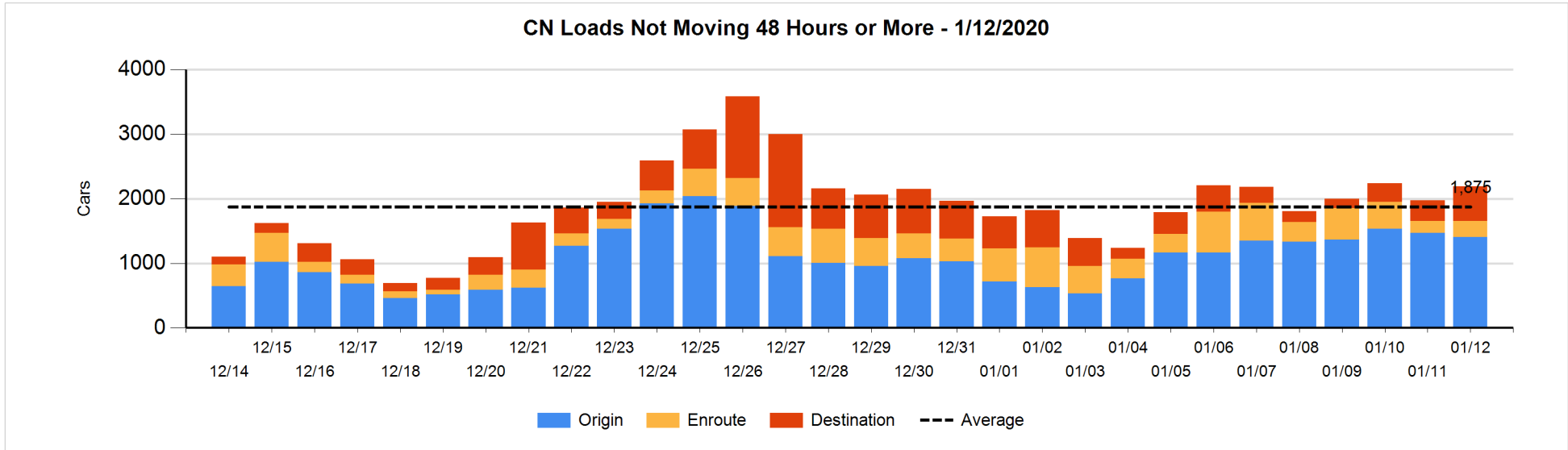


Loads Not Moving 48 Hours or More - 1/12/2020

	E Canada	Prince Rupert	Thunder Bay	USA/MEX	Vancouver	Total
CN						
Origin	14	642	104	35	612	1407
Enroute	159	67	1	6	17	250
Destination	122	17	25	23	350	537
	295	726	130	64	979	2194
CP						
Origin	2			50	897	949
Enroute	3		2	2	34	41
Destination			236		217	453
	5		238	52	1148	1443
US Rail / Short Line						
Origin						
Enroute				30		30
Destination	28			30	4	62
	28			60	4	92

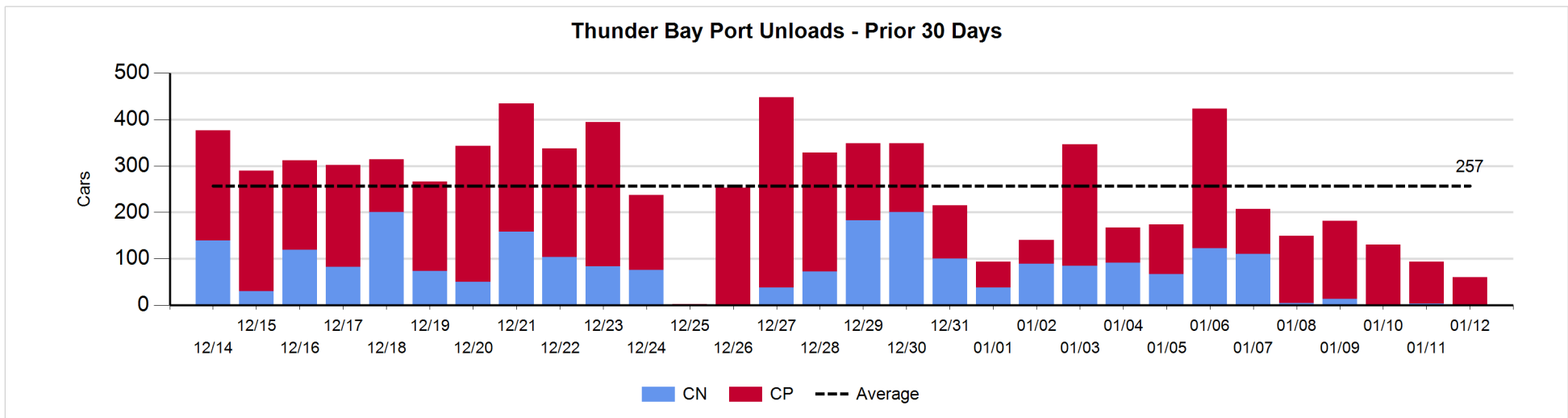
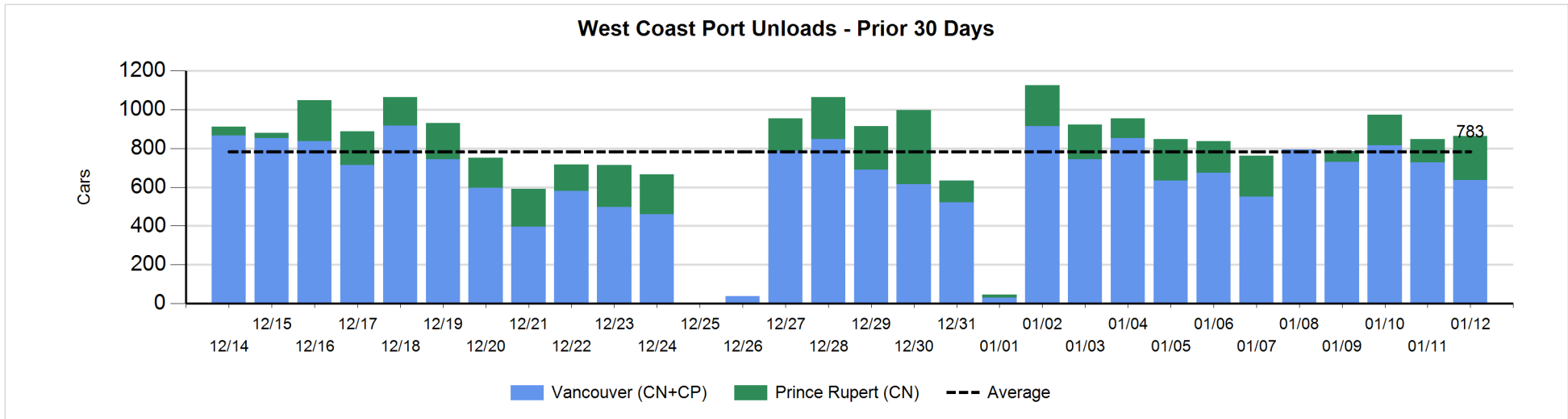
Change in Loads Not Moving 48 Hours or More - 1/12/2020

	E Canada	Prince Rupert	Thunder Bay	USA/MEX	Vancouver	Total
CN						
Origin	5	-190	104	35	-14	-60
Enroute	35	35	0	-1	-6	63
Destination	34	17	-7	5	169	218
	74	-138	97	39	149	221
CP						
Origin	1			50	159	210
Enroute	2		2	1	-6	-1
Destination			94	-1	106	199
	3		96	50	259	408
US Rail / Short Line						
Origin						
Enroute				10		10
Destination	28			0	-1	27
	28			10	-1	37



Port Unloads - 1/12/2020

	Prince Rupert	Vancouver	West Coast Total	Thunder Bay	Total
CN	227	304	531	1	532
CP		333	333	59	392
	227	637	864	60	924



Port Terminal Status

Vancouver

Daily Activity for 1/12/2020

	Cars Arrived	Cars Received in Interchange	Cars Delivered in Interchange	Cars Placed for Unloading	Loads on Wheels at Destination As of 1/12/2020
CN	327	27	3	373	895
CP	253	3	33	340	844
SRY		6		3	17

Port Unloads

	01/12	01/11	Week To Date	Last Week
CN	304	314	2,217	1,714
CP	333	413	2,712	2,594
SRY		3	53	42

Age Profile of Loaded Cars Waiting Placement for Unloading

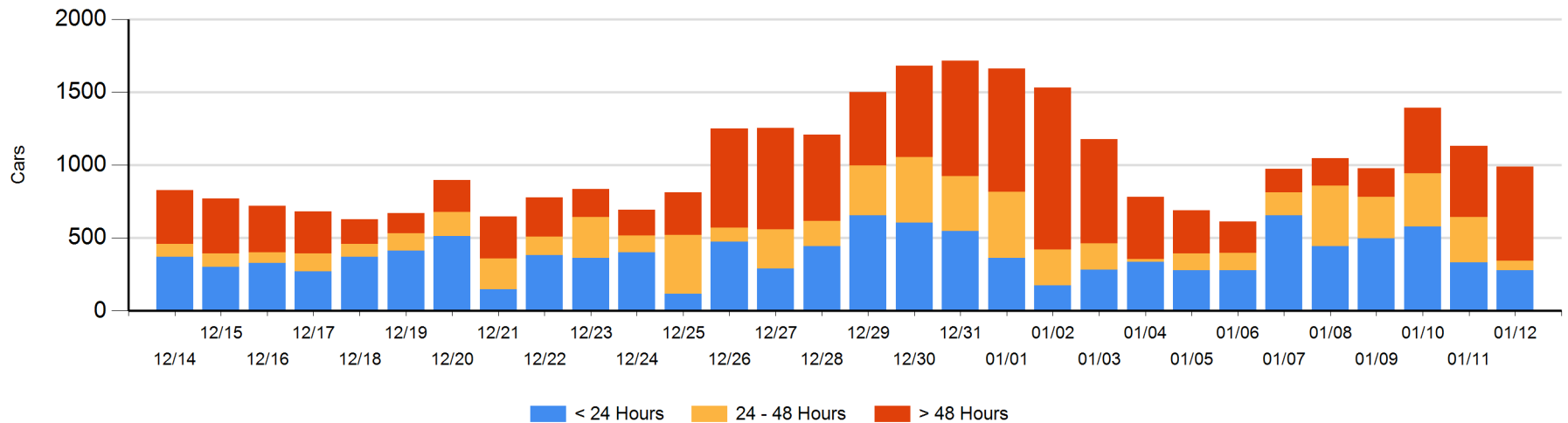
Today

	< 24 Hrs	24 - 48 Hrs	> 48-72 Hrs	> 72 Hrs	Total On Hand
CN	132		225	94	451
CP	148	63	80	249	540
SRY					0

Change in Last 24 Hours

	< 24 Hrs	24-48 Hrs	48 - 72 Hrs	> 72 Hrs
CN	-16	-225	207	-97
CP	-35	-24	-58	108
SRY				

Loaded Cars on Hand Vancouver Waiting for Placement - Last 30 Days All Railways



Port Terminal Status

Prince Rupert

Daily Activity for 1/12/2020

	Cars Arrived	Cars Received in Interchange	Cars Delivered in Interchange	Cars Placed for Unloading	Loads on Wheels at Destination As of 1/12/2020
CN	109			109	21

Port Unloads

	01/12	01/11	Week To Date	Last Week
CN	227	121	934	1,219

Age Profile of Loaded Cars Waiting Placement for Unloading

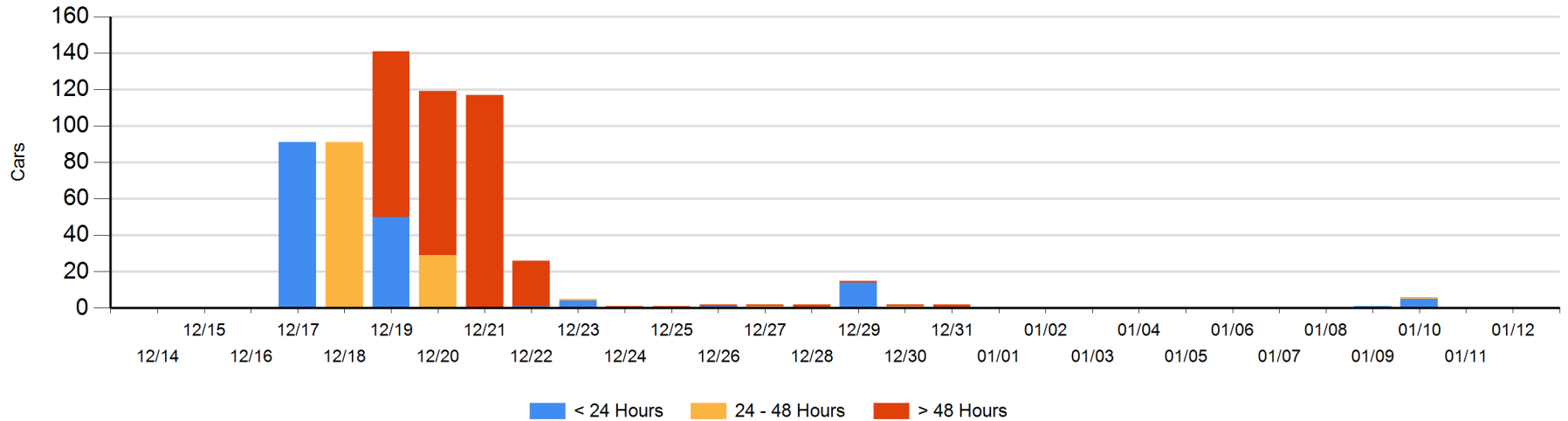
Today

	< 24 Hrs	24 - 48 Hrs	> 48-72 Hrs	> 72 Hrs	Total On Hand
CN					0

Change in Last 24 Hours

	< 24 Hrs	24-48 Hrs	48 - 72 Hrs	> 72 Hrs
CN				

Loaded Cars on Hand Prince Rupert Waiting for Placement - Last 30 Days All Railways



Port Terminal Status

Thunder Bay

Daily Activity for 1/12/2020

	Cars Arrived	Cars Received in Interchange	Cars Delivered in Interchange	Cars Placed for Unloading	Loads on Wheels at Destination As of 1/12/2020
CN	4			5	135
CP	143			31	367

Port Unloads

	01/12	01/11	Week To Date	Last Week
CN	1	4	256	670
CP	59	90	989	815

Age Profile of Loaded Cars Waiting Placement for Unloading

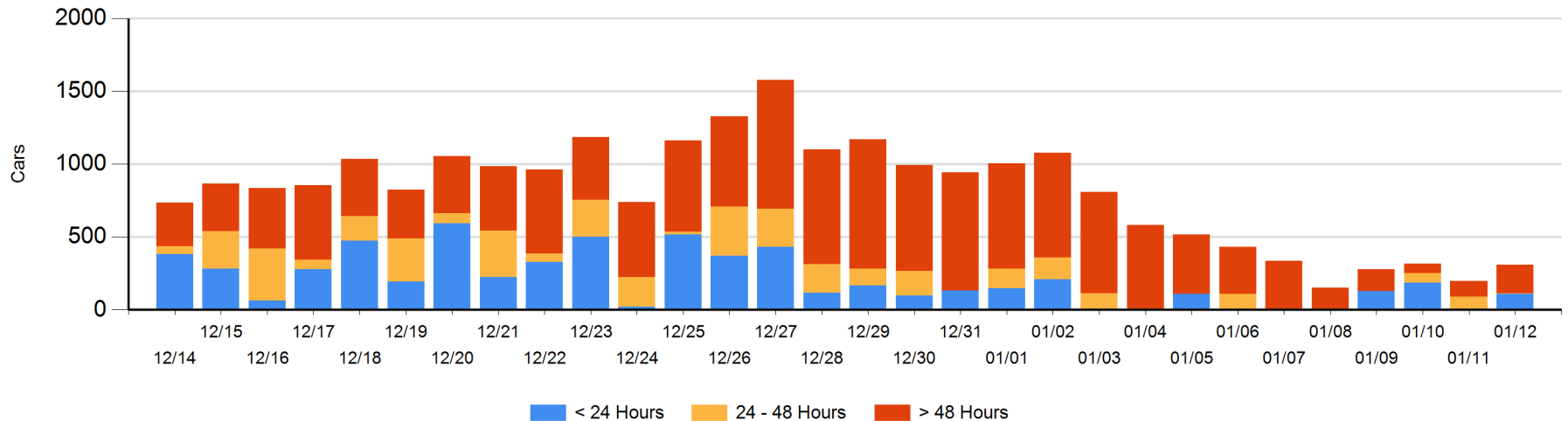
Today

	< 24 Hrs	24 - 48 Hrs	> 48-72 Hrs	> 72 Hrs	Total On Hand
CN	2				2
CP	112	1	88	107	308

Change in Last 24 Hours

	< 24 Hrs	24-48 Hrs	48 - 72 Hrs	> 72 Hrs
CN	2			
CP	111	-87	23	65

Loaded Cars on Hand Thunder Bay Waiting for Placement - Last 30 Days All Railways



Measurement Definitions

Loads on Wheels	<p>Count of loaded rail cars including all rail cars that have been released loaded at origin and have not been reported by the railway as unloaded at destination.</p> <p>Counts include all rail cars (hopper cars and boxcars) moving within a pipeline.</p>
Loads Not Moving	<p>Loaded rail cars for which the railways have not reported a movement event for 48 hours or more whether the rail car is at origin, enroute or at destination.</p>
Port Unloads	<p>Count of rail cars reported by railways as unloaded at the western port destinations of Vancouver, Prince Rupert and Thunder Bay.</p> <p>Unload counts include all rail cars (hopper cars and boxcars) unloaded by all receivers including major port terminals, transloaders and other receivers.</p>
Cars Arrived	<p>Count of rail cars reported as arrived at the destination railway terminal.</p>
Cars Received in Interchange	<p>Count of rail cars received in interchange by each railway within a destination railway terminal. Interchange activity is tracked for the Vancouver and Thunder Bay pipelines as applicable.</p>
Cars Delivered in Interchange	<p>Count of rail cars delivered in interchange by each railway within a destination railway terminal. Interchange activity is tracked for the Vancouver and Thunder Bay pipelines as applicable.</p>
Cars Placed for Unloading	<p>Count of rail cars reported by the railways as placed loaded at the receiver's facility for unloading.</p>
Loads on Wheels at Destination	<p>Count of rail cars that remain under load within the destination railway terminal including rail cars that have been reported as placed for unloading but not yet reported as unloaded.</p>
Waiting Placement for Unloading	<p>Count of rail cars that have been reported as arrived at the destination railway terminal but not reported as placed for unloading by the railway.</p> <p>For the Ports of Vancouver, Prince Rupert and Thunder Bay the count of rail cars waiting placement for unloading is categorized by age – i.e. the elapsed time from arrival at destination to the current report date.</p>