

## SPEED READ

- Loads on wheels fell slightly overnight, marking lower CP volumes offset by an increase in CN volumes. On a net basis, volumes declined due to lower volumes in the Thunder Bay, Vancouver and E. Canada corridors offset by higher volumes in the Prince Rupert and USA/MEX corridors.
- Network fluidity improved overnight, led by a decline in idle car counts on CN by 15% (-326) offset by an increase in idle car counts on CP by 13% (+190). The total count of cars for 4+ days on both railways rose 29% (+444) overnight - presently at 2,000 cars.
- One day in Week 24 unloads now behind prior week's performance by 400 unloads, marking lower unloads across all three major ports - Vancouver, Thunder Bay and Prince Rupert.

---

## Loads on Wheels

- Loads on wheels fell slightly by (-30) overnight, due to lower volumes on CP offset by higher volumes on CN - combined total at 10,904 and 8% below the trailing 30-day average.
- On a net basis, the decline in loads on wheels indicates lower volumes in the Thunder Bay, Vancouver and E. Canada corridors offset by higher volumes in the Prince Rupert and USA/MEX corridors.
- CN volumes rose 4% (+225) overnight, with higher volumes in the Prince Rupert and Vancouver corridors offset by lower volumes in the E. Canada, Thunder Bay and USA/MEX corridors. System wide CN loads on wheels presently at 6,201 and 3% below the trailing 30-day average.
- CP volumes fell 6% (-268) overnight, driven by a decline in volumes in the Vancouver and Thunder Bay corridors offset by an increase in volumes in the USA/MEX and E. Canada corridors. CP system wide loads on wheels now at 4,528 and 15% below the trailing 30-day average.
- Vancouver presently at 6,177, fell for the third consecutive day, down 3% (-200) overnight, now 6% below the trailing 30-day average.
- The Prince Rupert pipeline presently at 1,988, the highest seen in the last 30 days, increased significantly by 17% (+288) overnight, and 17% above the trailing 30-day average.
- Thunder Bay volumes fell significantly by 25% (-203) overnight - presently at 609, the lowest seen in the last 30 days, and 68% below the trailing 30-day average, with 59% of traffic moving on CP.

## Hopper Car Rationing

- CP cancelled 25 hopper car orders in Week 22 while CN cancelled 7 hopper car orders.

## Loads Not Moving

- **The count of cars not moving for 48+ hours fell 4% (-136) overnight, marking reduced counts on CN offset by higher counts on CP. Idle car counts currently at 3,466 and 1% below the trailing 30-day average.**
- CN
  - **The count of idle cars for 48+ hours fell 15% (-326) overnight - currently at 1,833 cars.**
  - The number of cars idle for 4+ days rose 24% (+250) overnight - currently at 1,281 cars.
  - The count of cars not moving for 7+ days fell 18% (-96) overnight - presently at 434 cars.
  - Vancouver represents 45% of all idle cars.
  - In total 56% of all idle cars are dwelling at origin locations.
- CP
  - **CP idle car counts for 48+ hours increased for the third consecutive day, up 13% (+190) overnight - currently at 1,633 cars.**

- The number of cars idle for 4+ days rose 37% (+194) overnight - currently at 719 cars.
- The number of cars idle for 7+ days rose 31% (+111) overnight - currently at 468 cars.
- Vancouver accounts for 88% of all idle cars.
- In total 67% of all idle cars are dwelling at origin locations.

### **Port Performance**

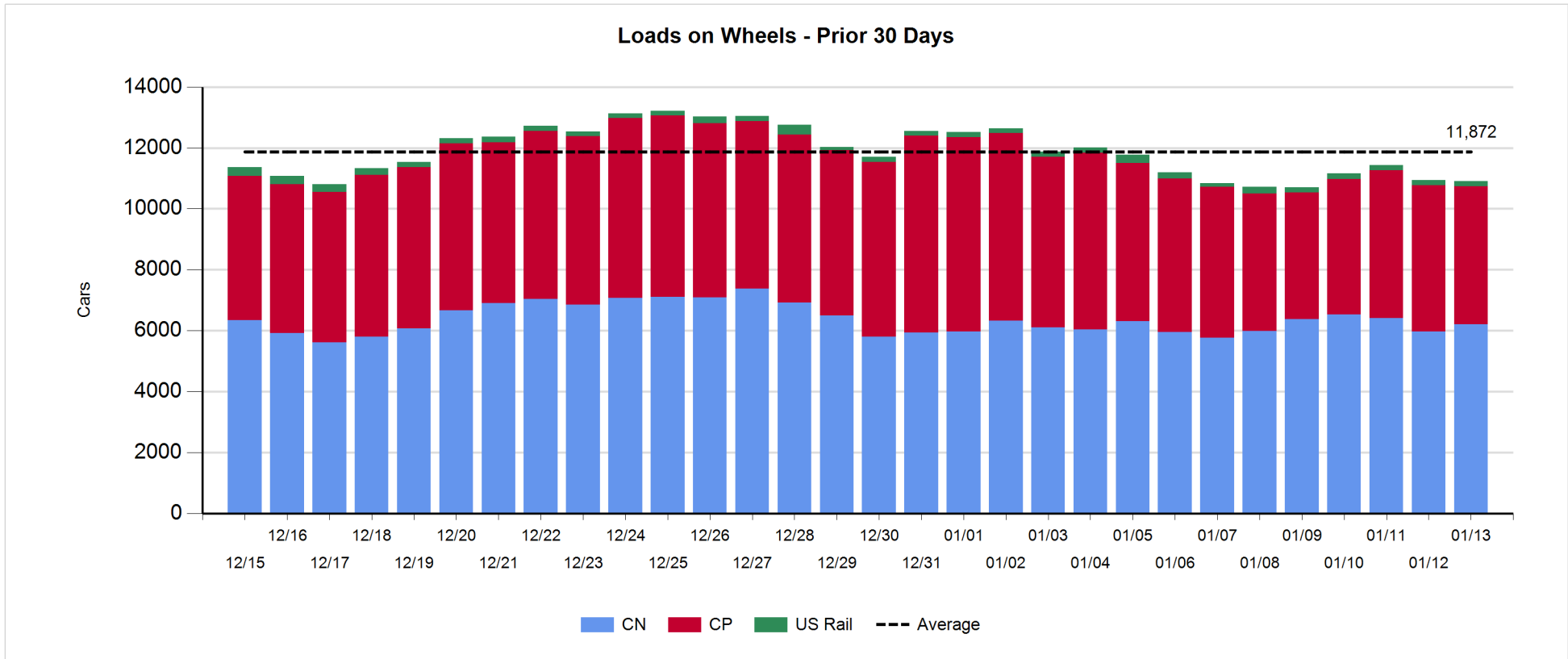
- CN and CP reported a total of 859 cars unloaded at the three major ports, 16% below the trailing 30-day average. One day in Week 24 unloads now behind last week's pace by 400 unloads, marking lower unloads across all three major ports - Vancouver, Thunder Bay and Prince Rupert.
- Vancouver
  - 566 unloads reported by CN and CP at the Port of Vancouver; CN - 245 and CP - 321. One day in Week 24 unloads are tracking behind last week's performance by more than 100 unloads.
  - There are more than 1,500 cars on site at Vancouver with nearly 350 cars arriving at the port in the last 24 hours.
  - CN and CP have 1,250 cars in British Columbia en route to Vancouver, with more than 500 cars at Kamloops and west, and 64% of traffic moving on CP.
- Prince Rupert
  - Prince Rupert reported 80 unloads, now behind last week's unloads after one day by nearly 100 unloads.
  - Loads on wheels remain above 1,000 cars - currently at 1,988 cars.
  - There are more than 400 cars west of Jasper en route to Prince Rupert.
  - There are 25 cars on site at Prince Rupert with less than 100 cars arriving at the port in the last 24 hours.
- Thunder Bay
  - 213 unloads were reported at Thunder Bay yesterday. One day in Week 24 unloads are tracking behind last week's pace by 200 unloads.
  - There are 400 cars on site at Thunder Bay with 100 cars arriving at the port in the prior 24 hours.
  - There are no cars en route to Thunder Bay from Winnipeg and east.

**Daily Loads on Wheels - 1/13/2020**

	E Canada	Prince Rupert	Thunder Bay	USA/MEX	Vancouver	Total
CN	1,041	1,988	248	172	2,752	6,201
CP	232		361	530	3,405	4,528
Short Line	42				20	62
US Rail				113		113
	1,315	1,988	609	815	6,177	10,904

**Change in Loads on Wheels - Prior 24 Hours**

	E Canada	Prince Rupert	Thunder Bay	USA/MEX	Vancouver	Total
CN	-123	288	-87	-44	191	225
CP	1		-116	241	-394	-268
Short Line	14				3	17
US Rail				-4		-4
	-108	288	-203	193	-200	-30

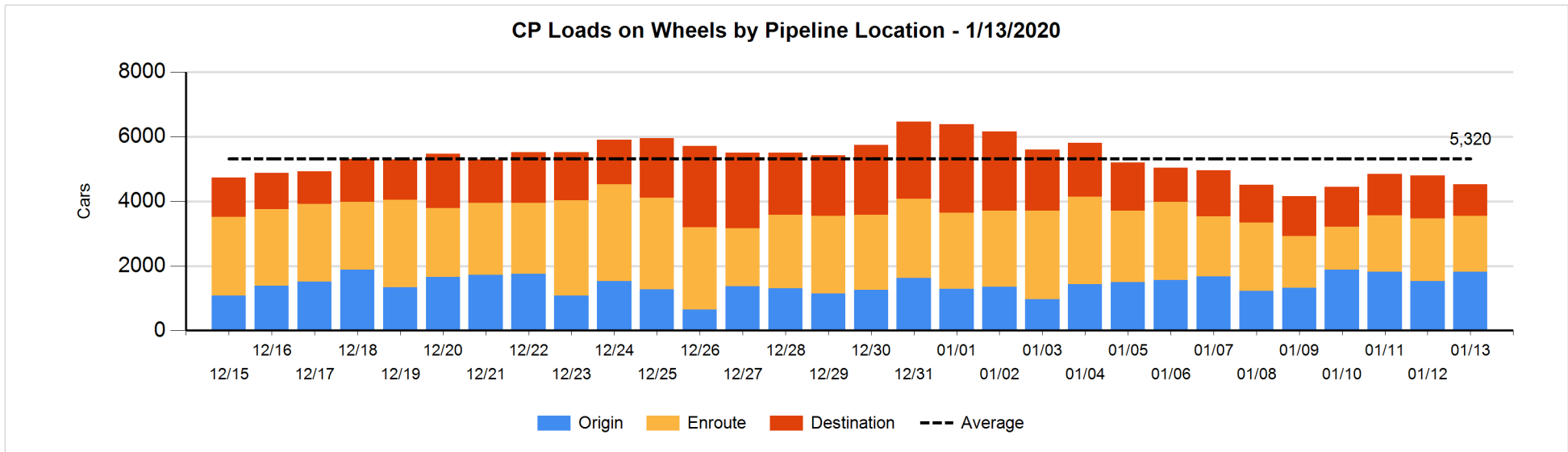
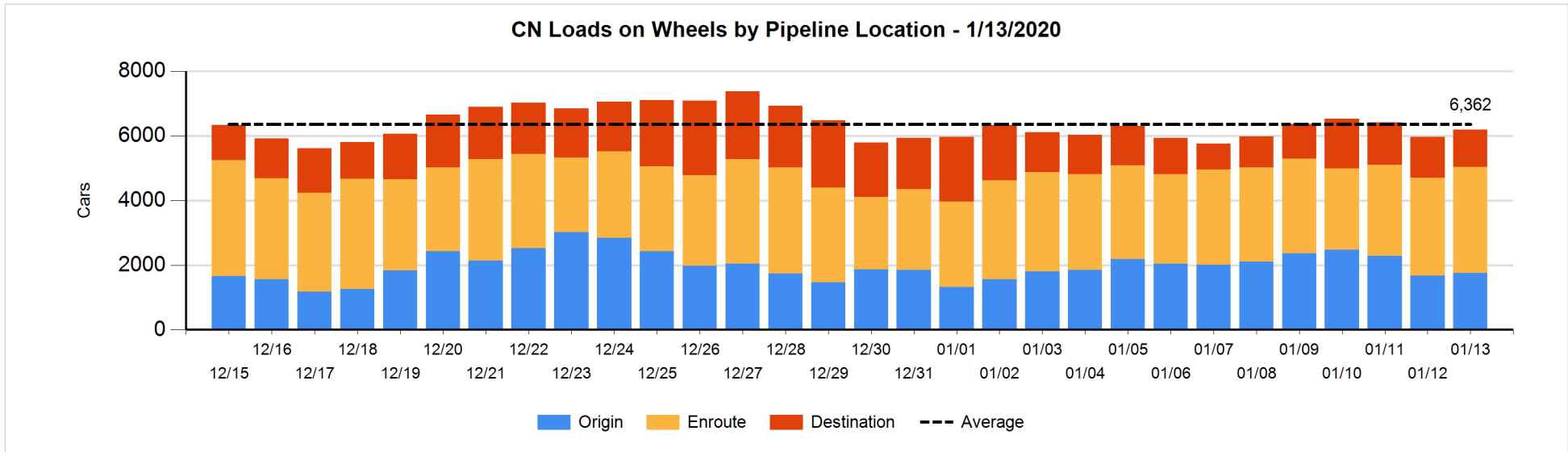


**Daily Loads on Wheels By Pipeline Location - 1/13/2020**

	E Canada	Prince Rupert	Thunder Bay	USA/MEX	Vancouver	Total
CN						
Origin	54	1,052	26	14	605	1,751
Enroute	820	911	81	142	1,339	3,293
Destination	167	25	141	16	808	1,157
	1,041	1,988	248	172	2,752	6,201
CP						
Origin	2			383	1,428	1,813
Enroute	230		110	104	1,285	1,729
Destination			251	43	692	986
	232		361	530	3,405	4,528
US Rail / Short Line						
Origin						
Enroute				51		51
Destination	42			62	20	124
	42			113	20	175

**Change in Daily Loads on Wheels By Pipeline Location - Prior 24 Hours**

	E Canada	Prince Rupert	Thunder Bay	USA/MEX	Vancouver	Total
CN						
Origin	-11	333	-79	-26	-135	82
Enroute	-87	-49	-14	-9	413	254
Destination	-25	4	6	-9	-87	-111
	-123	288	-87	-44	191	225
CP						
Origin	0			308	-29	279
Enroute	1		0	0	-214	-213
Destination			-116	-67	-151	-334
	1		-116	241	-394	-268
US Rail / Short Line						
Origin						
Enroute				-32		-32
Destination	14			28	3	45
	14			-4	3	13

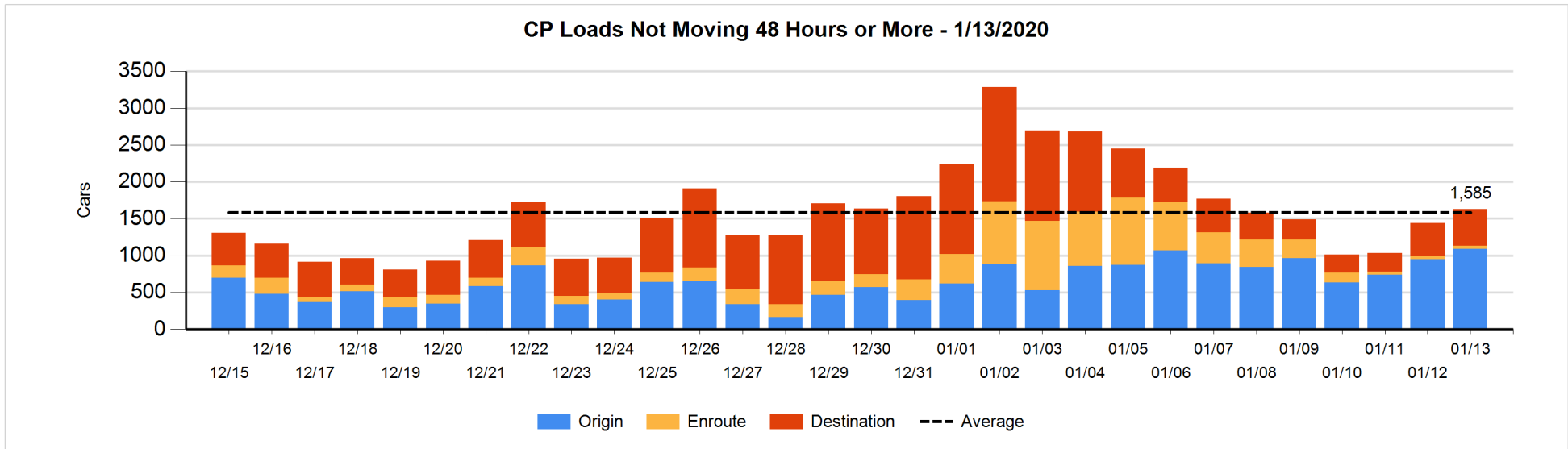
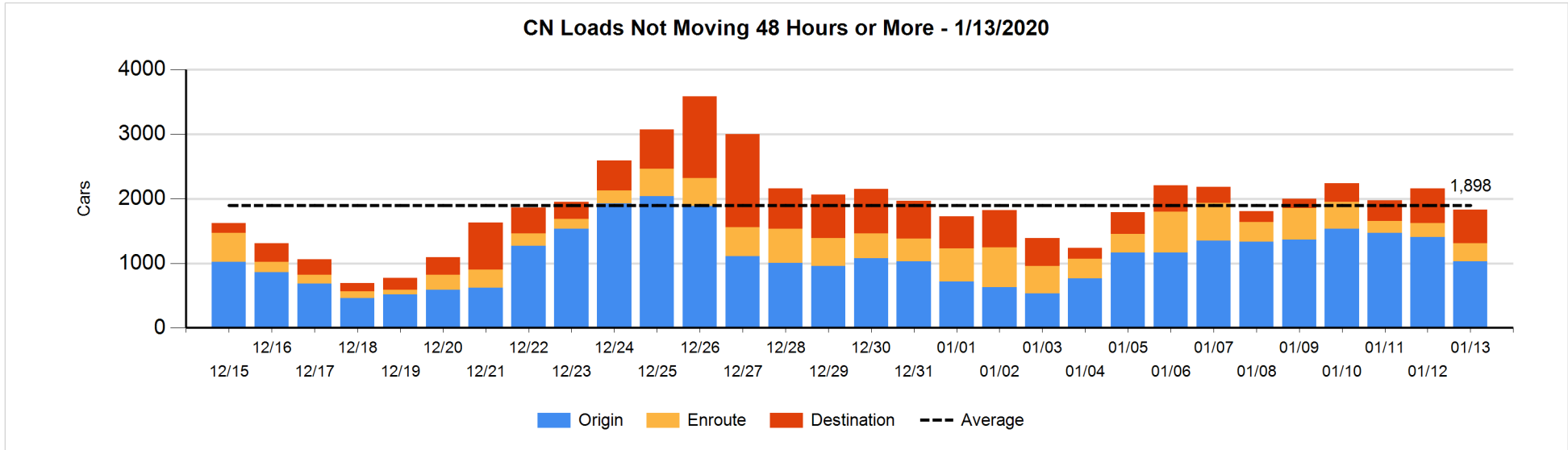


**Loads Not Moving 48 Hours or More - 1/13/2020**

	E Canada	Prince Rupert	Thunder Bay	USA/MEX	Vancouver	Total
<b>CN</b>						
Origin	40	609	25	11	345	1030
Enroute	104	31		4	144	283
Destination	106	18	41	12	343	520
	250	658	66	27	832	1833
<b>CP</b>						
Origin	1			75	1014	1090
Enroute	4		2	3	33	42
Destination			83	30	388	501
	5		85	108	1435	1633
<b>US Rail / Short Line</b>						
Origin						
Enroute				21		21
Destination	16			17	7	40
	16			38	7	61

**Change in Loads Not Moving 48 Hours or More - 1/13/2020**

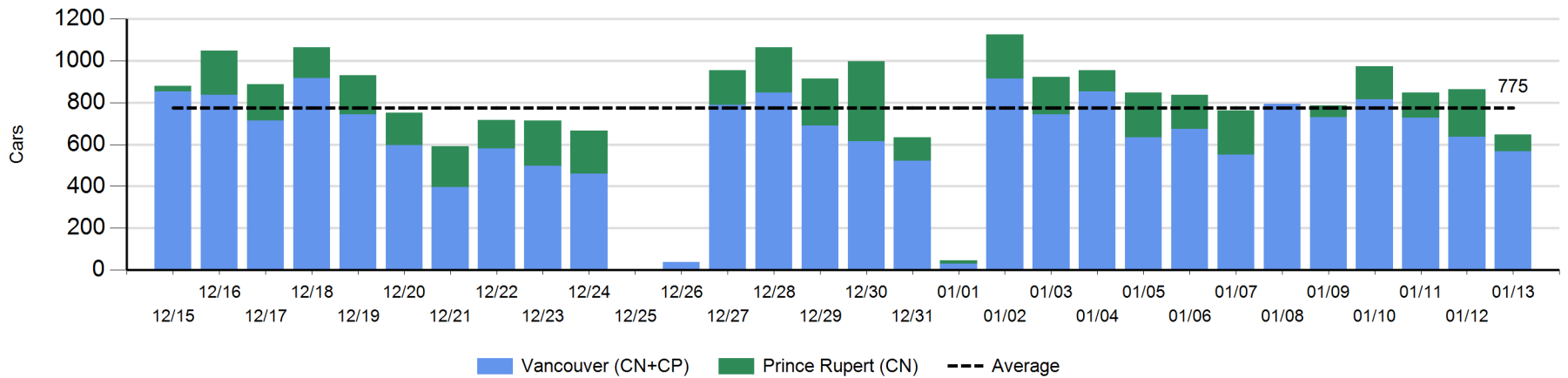
	E Canada	Prince Rupert	Thunder Bay	USA/MEX	Vancouver	Total
<b>CN</b>						
Origin	26	-33	-79	-24	-267	-377
Enroute	-20	-36	-1	-2	127	68
Destination	-16	1	16	-11	-7	-17
	-10	-68	-64	-37	-147	-326
<b>CP</b>						
Origin	-1			25	117	141
Enroute	1		0	1	-1	1
Destination			-153	30	171	48
	0		-153	56	287	190
<b>US Rail / Short Line</b>						
Origin						
Enroute				-9		-9
Destination	-12			-12	3	-21
	-12			-21	3	-30



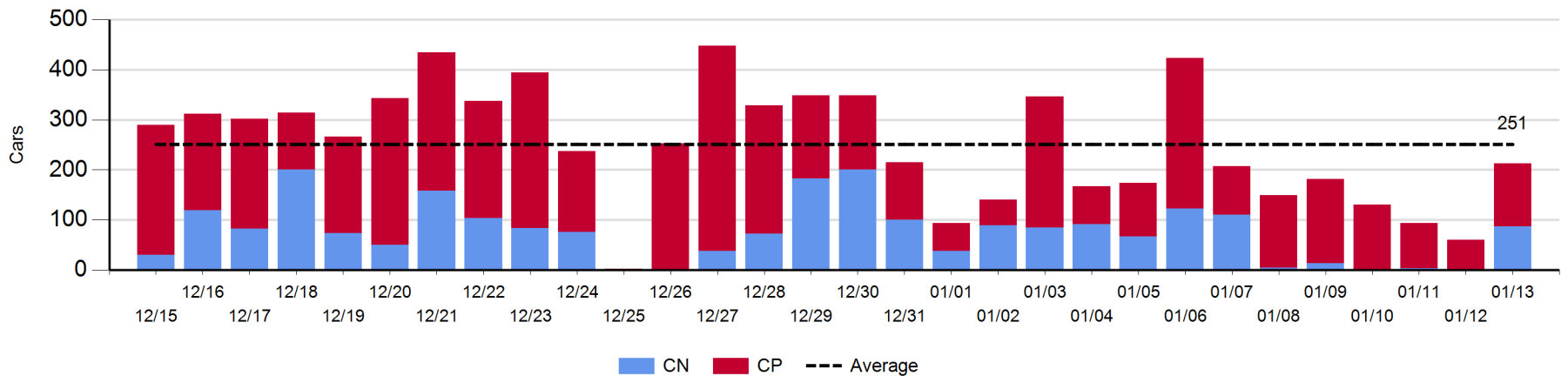
Port Unloads - 1/13/2020

	Prince Rupert	Vancouver	West Coast Total	Thunder Bay	Total
CN	80	245	325	87	412
CP		321	321	126	447
	80	566	646	213	859

West Coast Port Unloads - Prior 30 Days



Thunder Bay Port Unloads - Prior 30 Days





**Port Terminal Status**

**Vancouver**

Daily Activity for 1/13/2020

	Cars Arrived	Cars Received in Interchange	Cars Delivered in Interchange	Cars Placed for Unloading	Loads on Wheels at Destination As of 1/13/2020
CN	272	222	194	274	808
CP	63	194	226	149	693
SRY	1	4		5	20

**Port Unloads**

	01/13	01/12	Week To Date	Last Week
CN	245	304	245	2,217
CP	321	333	321	2,712
SRY	6		6	53

**Age Profile of Loaded Cars Waiting Placement for Unloading**

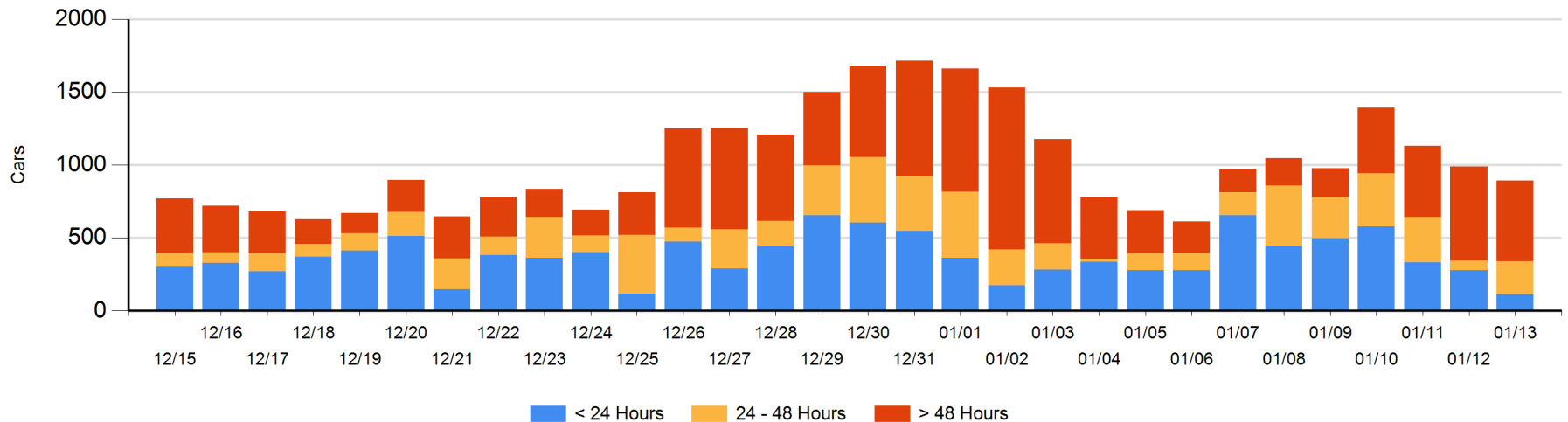
**Today**

	< 24 Hrs	24 - 48 Hrs	> 48-72 Hrs	> 72 Hrs	Total On Hand
CN	104	174		232	510
CP	9	51	46	277	383
SRY					0

**Change in Last 24 Hours**

	< 24 Hrs	24-48 Hrs	48 - 72 Hrs	> 72 Hrs
CN	-28	174	-225	138
CP	-139	-12	-34	28
SRY				

**Loaded Cars on Hand Vancouver Waiting for Placement - Last 30 Days All Railways**



**Port Terminal Status**

**Prince Rupert**

Daily Activity for 1/13/2020

	Cars Arrived	Cars Received in Interchange	Cars Delivered in Interchange	Cars Placed for Unloading	Loads on Wheels at Destination As of 1/13/2020
CN	84			84	25

**Port Unloads**

	01/13	01/12	Week To Date	Last Week
CN	80	227	80	934

**Age Profile of Loaded Cars Waiting Placement for Unloading**

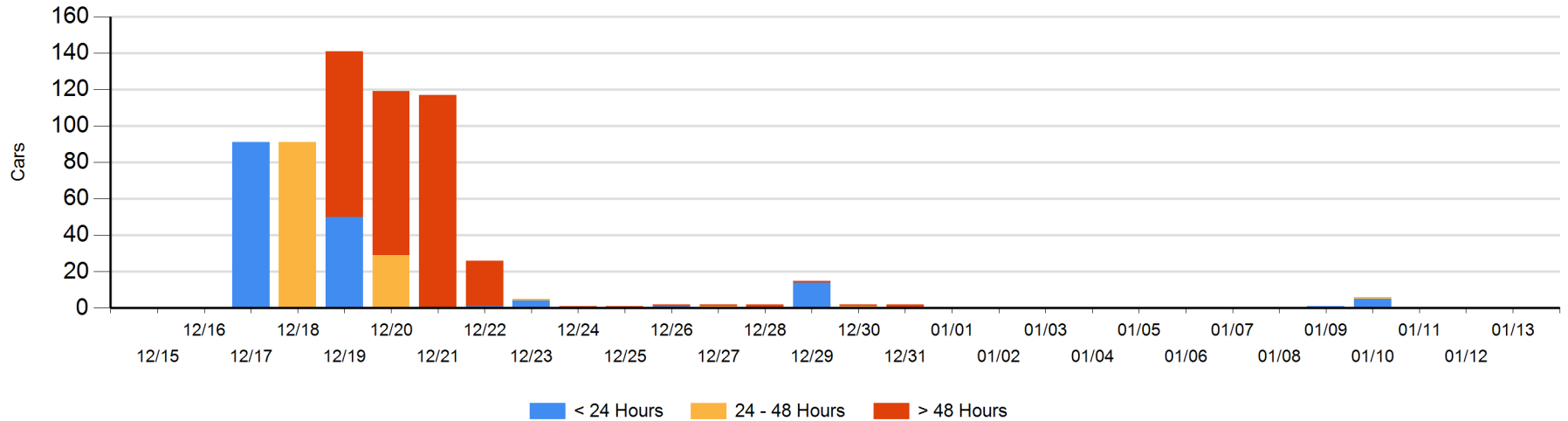
**Today**

	< 24 Hrs	24 - 48 Hrs	> 48-72 Hrs	> 72 Hrs	Total On Hand
CN					0

**Change in Last 24 Hours**

	< 24 Hrs	24-48 Hrs	48 - 72 Hrs	> 72 Hrs
CN				

Loaded Cars on Hand Prince Rupert Waiting for Placement - Last 30 Days All Railways



**Port Terminal Status**

**Thunder Bay**

Daily Activity for 1/13/2020

	Cars Arrived	Cars Received in Interchange	Cars Delivered in Interchange	Cars Placed for Unloading	Loads on Wheels at Destination As of 1/13/2020
CN	93				141
CP	11			145	251

**Port Unloads**

	01/13	01/12	Week To Date	Last Week
CN	87	1	87	256
CP	126	59	126	989

**Age Profile of Loaded Cars Waiting Placement for Unloading**

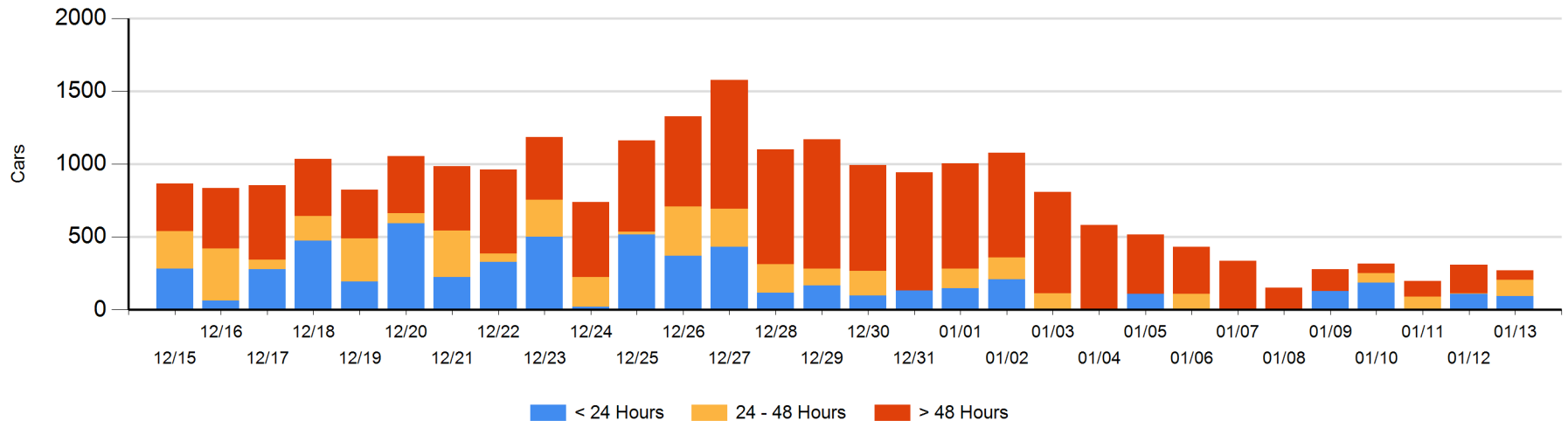
**Today**

	< 24 Hrs	24 - 48 Hrs	> 48-72 Hrs	> 72 Hrs	Total On Hand
CN	93	2			95
CP		112	1	61	174

**Change in Last 24 Hours**

	< 24 Hrs	24-48 Hrs	48 - 72 Hrs	> 72 Hrs
CN	91	2		
CP	-112	111	-87	-46

**Loaded Cars on Hand Thunder Bay Waiting for Placement - Last 30 Days All Railways**



## Measurement Definitions

Loads on Wheels	<p>Count of loaded rail cars including all rail cars that have been released loaded at origin and have not been reported by the railway as unloaded at destination.</p> <p>Counts include all rail cars (hopper cars and boxcars) moving within a pipeline.</p>
Loads Not Moving	<p>Loaded rail cars for which the railways have not reported a movement event for 48 hours or more whether the rail car is at origin, enroute or at destination.</p>
Port Unloads	<p>Count of rail cars reported by railways as unloaded at the western port destinations of Vancouver, Prince Rupert and Thunder Bay.</p> <p>Unload counts include all rail cars (hopper cars and boxcars) unloaded by all receivers including major port terminals, transloaders and other receivers.</p>
Cars Arrived	<p>Count of rail cars reported as arrived at the destination railway terminal.</p>
Cars Received in Interchange	<p>Count of rail cars received in interchange by each railway within a destination railway terminal. Interchange activity is tracked for the Vancouver and Thunder Bay pipelines as applicable.</p>
Cars Delivered in Interchange	<p>Count of rail cars delivered in interchange by each railway within a destination railway terminal. Interchange activity is tracked for the Vancouver and Thunder Bay pipelines as applicable.</p>
Cars Placed for Unloading	<p>Count of rail cars reported by the railways as placed loaded at the receiver's facility for unloading.</p>
Loads on Wheels at Destination	<p>Count of rail cars that remain under load within the destination railway terminal including rail cars that have been reported as placed for unloading but not yet reported as unloaded.</p>
Waiting Placement for Unloading	<p>Count of rail cars that have been reported as arrived at the destination railway terminal but not reported as placed for unloading by the railway.</p> <p>For the Ports of Vancouver, Prince Rupert and Thunder Bay the count of rail cars waiting placement for unloading is categorized by age – i.e. the elapsed time from arrival at destination to the current report date.</p>