

SPEED READ

- Loads on wheels decreased overnight, marking a decline in both CN and CP volumes. On a net basis, volumes fell due to reduced traffic across all corridors.
- Network fluidity improved marginally overnight, led by a decline in idle car counts on CP by 6% (-102) offset by an increase in idle car counts on CN by 4% (+67). The total count of cars for 4+ days on both railways rose 3% (+59) overnight - now at 2,059 cars.
- Two days in Week 24 unloads now behind prior week's performance by more than 350 unloads, marking reduced unloads at Prince Rupert and Thunder Bay offset by improved week over week performance at Vancouver.

=====

Loads on Wheels

- Loads on wheels fell for the third consecutive day, down 6% (-601) overnight, due to lower traffic on both CN and CP - combined total at 10,303, the lowest seen in the last 30 days, and 13% below the trailing 30-day average.
- On a net basis, the decline in loads on wheels reflects reduced traffic across all corridors.
- CN volumes fell 6% (-371) overnight, with lower volumes across all corridors other than USA/MEX. System wide CN loads on wheels now at 5,830 and 8% below the trailing 30-day average.
- CP volumes fell for the third consecutive day, down 5% (-214) overnight, driven by a decline in volumes across all corridors other than E. Canada. CP system wide loads on wheels now at 4,314 and 19% below the trailing 30-day average.
- Vancouver now at 5,898, fell 5% (-279) overnight and have now decreased for the fourth consecutive day, now 10% below the trailing 30-day average.
- The Prince Rupert pipeline now at 1,981, decreased slightly by (-7) overnight, and 16% above the trailing 30-day average.
- Thunder Bay volumes fell 16% (-95) overnight and have now decreased for the third consecutive day - presently at 514, the lowest seen in the last 30 days, and 72% below the trailing 30-day average, with 62% of traffic moving on CP.

Hopper Car Rationing

- CP cancelled 25 hopper car orders in Week 22 while CN cancelled 7 hopper car orders.

Loads Not Moving

- **The count of cars not moving for 48+ hours decreased marginally by 1% (-35) overnight, reflecting lower counts on CP offset by higher counts on CN. Idle car counts now at 3,431 and 2% below the trailing 30-day average.**
- CN
 - **The count of idle cars for 48+ hours increased 4% (+67) overnight - now at 1,900 cars.**
 - The number of cars idle for 4+ days decreased 4% (-54) overnight - now at 1,227 cars.
 - The count of cars not moving for 7+ days increased 26% (+113) overnight - presently at 547 cars.
 - Vancouver represents 36% of all idle cars.
 - In total 53% of all idle cars are dwelling at origin locations.
- CP
 - **CP idle car counts for 48+ hours decreased 6% (-102) overnight - now at 1,531 cars.**
 - The number of cars idle for 4+ days increased 16% (+113) overnight - now at 832 cars.
 - The number of cars idle for 7+ days fell 32% (-149) overnight - now at 319 cars.

- Vancouver accounts for 94% of all idle cars.
- In total 77% of all idle cars are dwelling at origin locations.

Port Performance

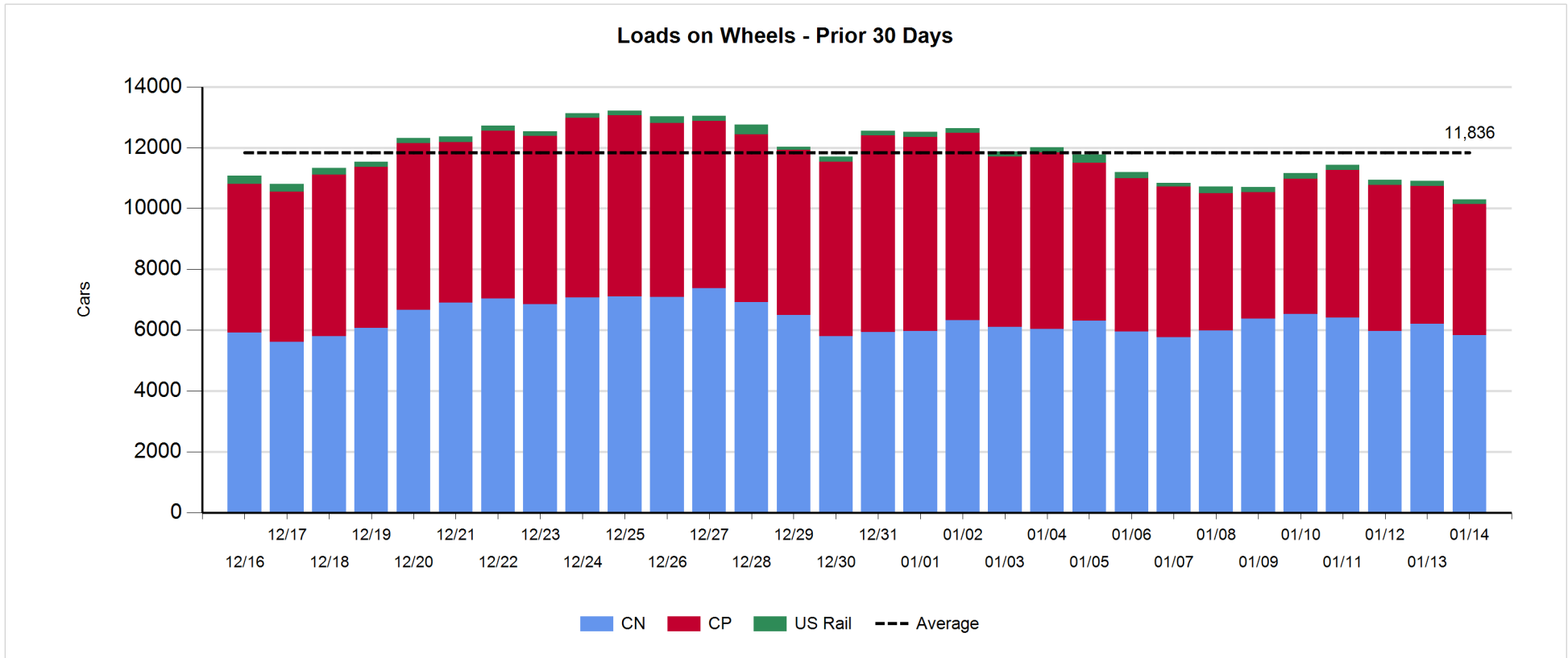
- CN and CP reported a total of 1,005 cars unloaded at the three major ports, 2% below the trailing 30-day average. Two days in Week 24 unloads now behind last week's pace by more than 350 unloads, marking reduced unloads at Prince Rupert and Thunder Bay offset by higher unloads at Vancouver.
- Vancouver
 - 793 unloads reported by CN and CP at the Port of Vancouver; CN - 536 and CP - 257. Two days in Week 24 unloads are tracking ahead of last week's performance by more than 100 unloads.
 - There are more than 1,200 cars on site at Vancouver with 500 cars arriving at the port in the last 24 hours.
 - CN and CP have more than 1,100 cars in British Columbia en route to Vancouver, with more than 350 cars at Kamloops and west, and 73% of traffic moving on CP.
- Prince Rupert
 - Prince Rupert reported 3 unloads, now behind last week's unloads after two days by about 300 unloads.
 - Loads on wheels remain above 1,000 cars - now at 1,981 cars.
 - There are more than 400 cars west of Jasper en route to Prince Rupert.
 - There are nearly 50 cars on site at Prince Rupert with 11 cars arriving at the port in the last 24 hours.
- Thunder Bay
 - 209 unloads were reported at Thunder Bay yesterday. Two days in Week 24 unloads are tracking behind last week's pace by 200 unloads.
 - There are nearly 200 cars on site at Thunder Bay with 6 cars arriving at the port in the prior 24 hours.
 - There are more than 100 cars en route to Thunder Bay from Winnipeg and east.

Daily Loads on Wheels - 1/14/2020

	E Canada	Prince Rupert	Thunder Bay	USA/MEX	Vancouver	Total
CN	868	1,981	195	176	2,610	5,830
CP	235		319	488	3,272	4,314
Short Line	30				16	46
US Rail				113		113
	1,133	1,981	514	777	5,898	10,303

Change in Loads on Wheels - Prior 24 Hours

	E Canada	Prince Rupert	Thunder Bay	USA/MEX	Vancouver	Total
CN	-173	-7	-53	4	-142	-371
CP	3		-42	-42	-133	-214
Short Line	-12				-4	-16
US Rail				0		0
	-182	-7	-95	-38	-279	-601

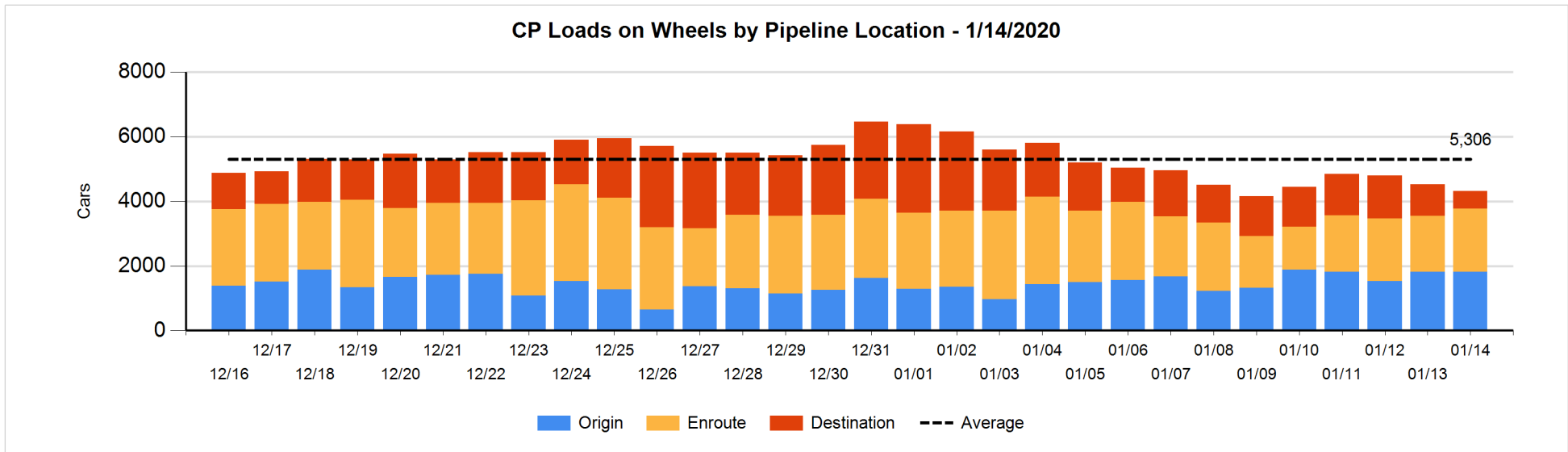
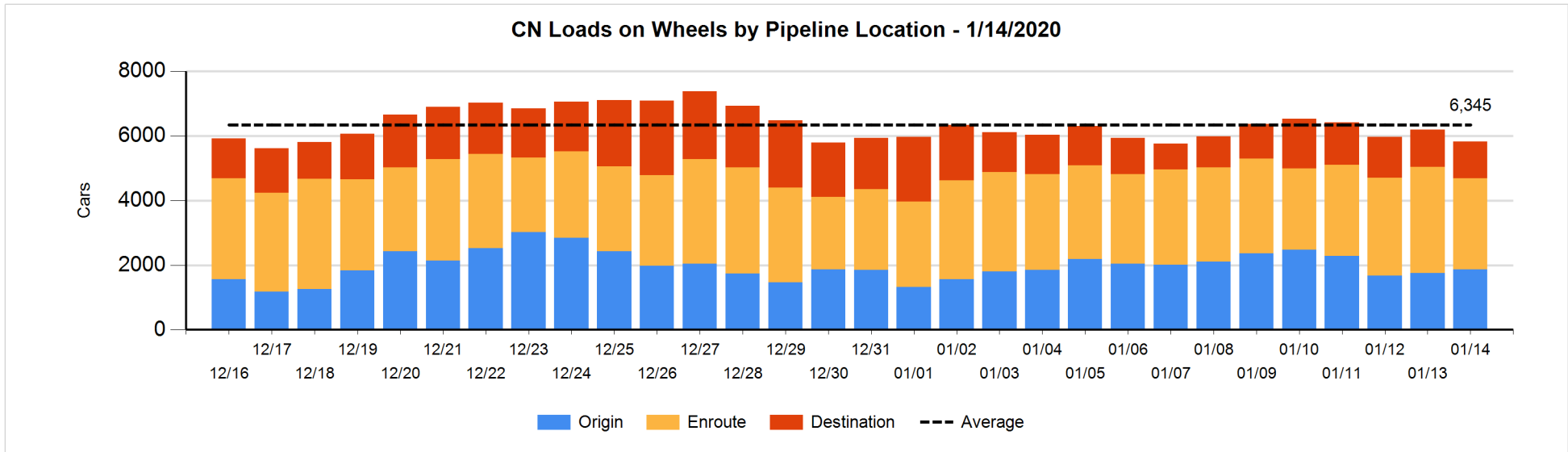


Daily Loads on Wheels By Pipeline Location - 1/14/2020

	E Canada	Prince Rupert	Thunder Bay	USA/MEX	Vancouver	Total
CN						
Origin	96	1,052	25	19	667	1,859
Enroute	530	896	82	140	1,175	2,823
Destination	242	33	88	17	768	1,148
	868	1,981	195	176	2,610	5,830
CP						
Origin	5			275	1,535	1,815
Enroute	229		219	213	1,304	1,965
Destination	1		100		433	534
	235		319	488	3,272	4,314
US Rail / Short Line						
Origin						
Enroute				49		49
Destination	30			64	16	110
	30			113	16	159

Change in Daily Loads on Wheels By Pipeline Location - Prior 24 Hours

	E Canada	Prince Rupert	Thunder Bay	USA/MEX	Vancouver	Total
CN						
Origin	42	0	-1	5	62	108
Enroute	-293	-15	1	-2	-164	-473
Destination	78	8	-53	1	-40	-6
	-173	-7	-53	4	-142	-371
CP						
Origin	3			-108	107	2
Enroute	-1		109	109	19	236
Destination	1		-151	-43	-259	-452
	3		-42	-42	-133	-214
US Rail / Short Line						
Origin						
Enroute				-2		-2
Destination	-12			2	-4	-14
	-12			0	-4	-16

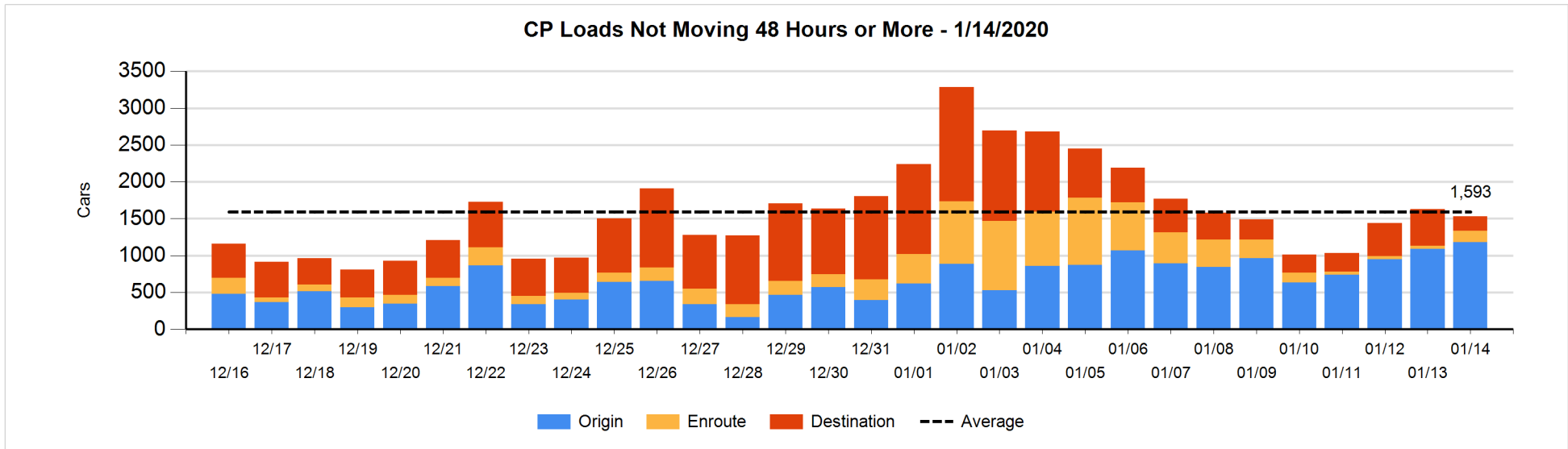
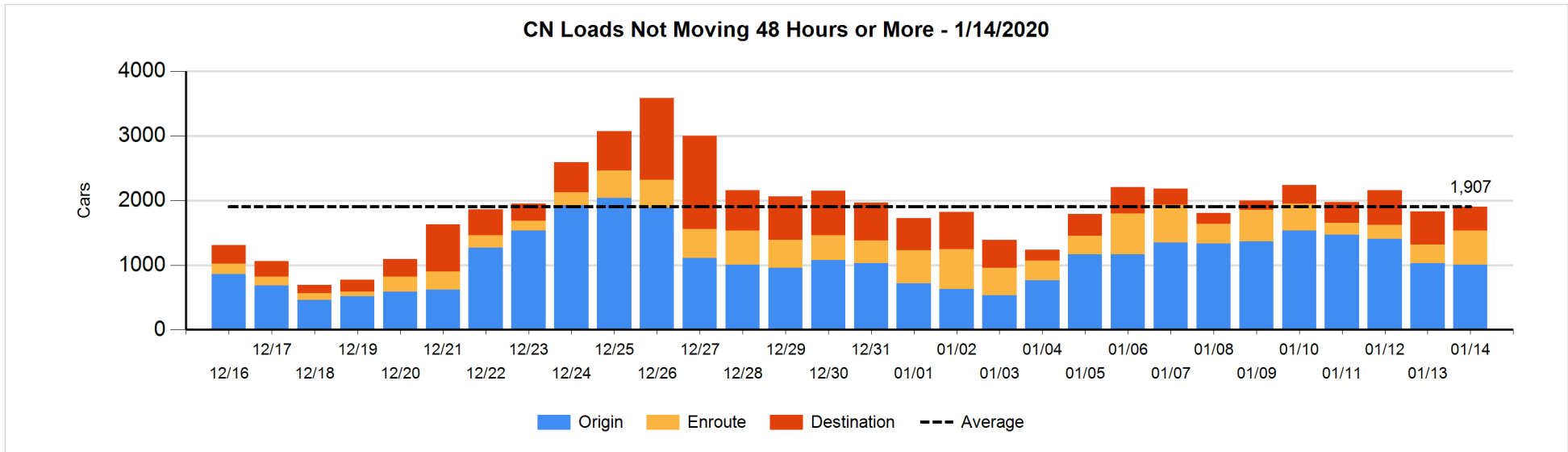


Loads Not Moving 48 Hours or More - 1/14/2020

	E Canada	Prince Rupert	Thunder Bay	USA/MEX	Vancouver	Total
CN						
Origin	40	686	25	11	243	1005
Enroute	104	276	1	4	145	530
Destination	30	18	16	8	293	365
	174	980	42	23	681	1900
CP						
Origin	1			74	1108	1183
Enroute	3		2	1	148	154
Destination			13		181	194
	4		15	75	1437	1531
US Rail / Short Line						
Origin						
Enroute				24		24
Destination	16			14	11	41
	16			38	11	65

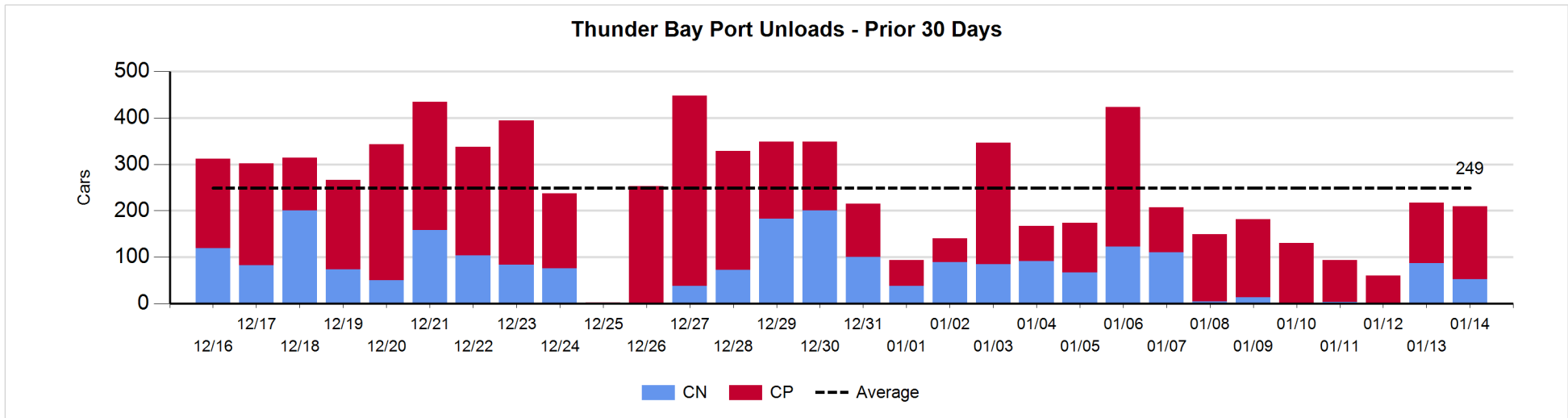
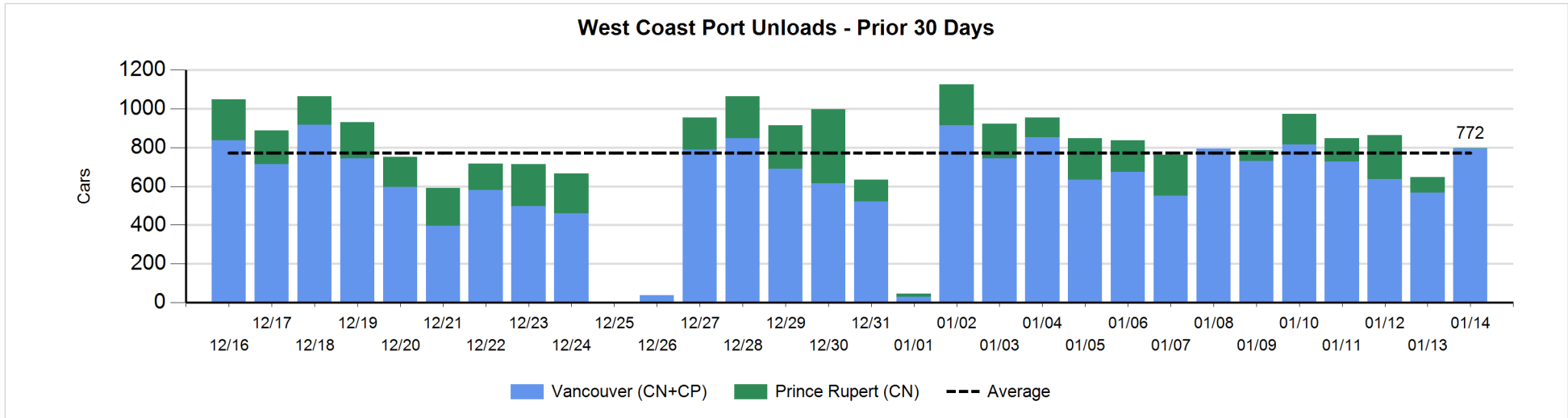
Change in Loads Not Moving 48 Hours or More - 1/14/2020

	E Canada	Prince Rupert	Thunder Bay	USA/MEX	Vancouver	Total
CN						
Origin	0	77	0	0	-102	-25
Enroute	-3	245	1	0	1	244
Destination	-73	0	-25	-4	-50	-152
	-76	322	-24	-4	-151	67
CP						
Origin	0			-1	94	93
Enroute	-1		0	-2	115	112
Destination			-70	-30	-207	-307
	-1		-70	-33	2	-102
US Rail / Short Line						
Origin						
Enroute				3		3
Destination	0			-3	4	1
	0			0	4	4



Port Unloads - 1/14/2020

	Prince Rupert	Vancouver	West Coast Total	Thunder Bay	Total
CN	3	536	539	53	592
CP		257	257	156	413
	3	793	796	209	1,005



Port Terminal Status

Vancouver

Daily Activity for 1/14/2020

	Cars Arrived	Cars Received in Interchange	Cars Delivered in Interchange	Cars Placed for Unloading	Loads on Wheels at Destination As of 1/14/2020
CN	282	230		371	768
CP	212		234	291	434
SRY		4		3	16

Port Unloads

	01/14	01/13	Week To Date	Last Week
CN	536	245	781	2,217
CP	257	321	578	2,712
SRY	4	6	10	53

Age Profile of Loaded Cars Waiting Placement for Unloading

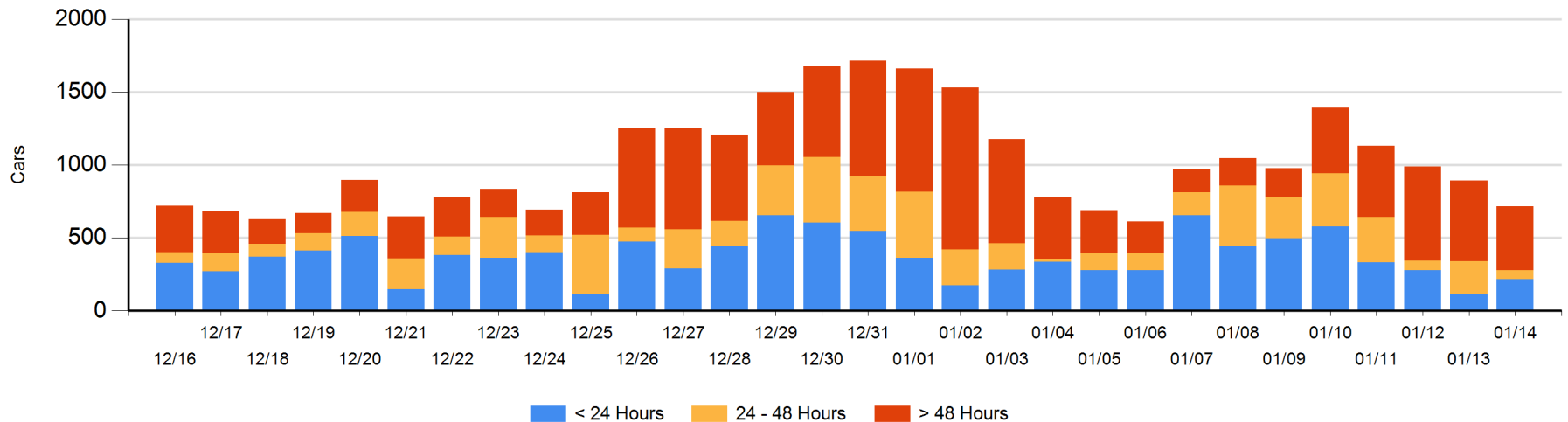
Today

	< 24 Hrs	24 - 48 Hrs	> 48-72 Hrs	> 72 Hrs	Total On Hand
CN	179	52	72	112	415
CP	37	9	51	204	301
SRY					0

Change in Last 24 Hours

	< 24 Hrs	24-48 Hrs	48 - 72 Hrs	> 72 Hrs
CN	75	-122	72	-120
CP	28	-42	5	-73
SRY				

Loaded Cars on Hand Vancouver Waiting for Placement - Last 30 Days All Railways



Port Terminal Status

Prince Rupert

Daily Activity for 1/14/2020

	Cars Arrived	Cars Received in Interchange	Cars Delivered in Interchange	Cars Placed for Unloading	Loads on Wheels at Destination As of 1/14/2020
CN		11		11	33

Port Unloads

	01/14	01/13	Week To Date	Last Week
CN	3	80	83	934

Age Profile of Loaded Cars Waiting Placement for Unloading

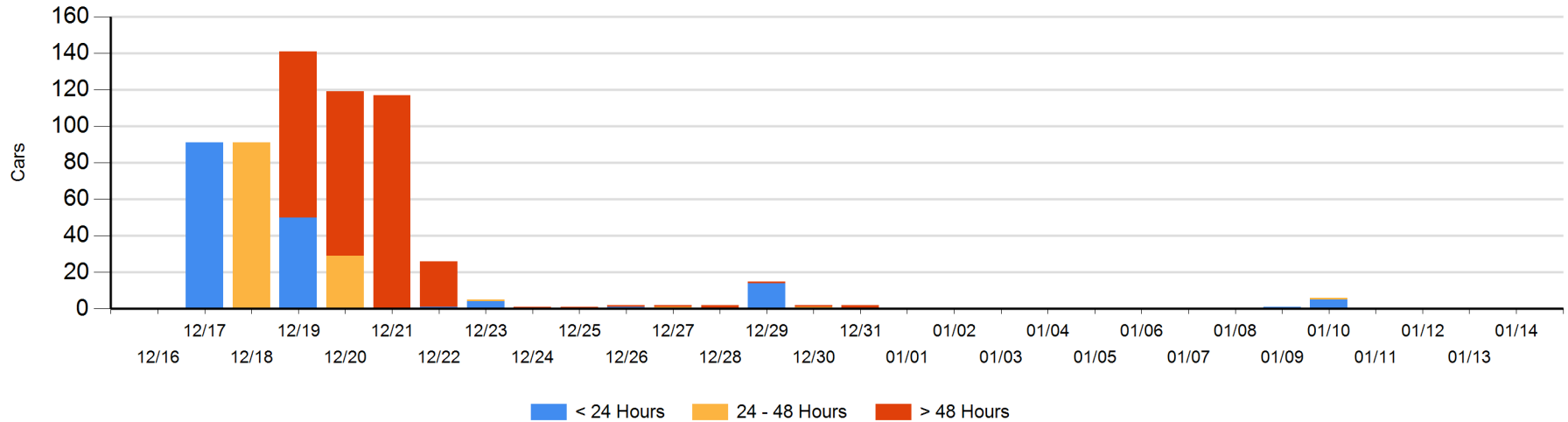
Today

	< 24 Hrs	24 - 48 Hrs	> 48-72 Hrs	> 72 Hrs	Total On Hand
CN					0

Change in Last 24 Hours

	< 24 Hrs	24-48 Hrs	48 - 72 Hrs	> 72 Hrs
CN				

Loaded Cars on Hand Prince Rupert Waiting for Placement - Last 30 Days All Railways



Port Terminal Status

Thunder Bay

Daily Activity for 1/14/2020

	Cars Arrived	Cars Received in Interchange	Cars Delivered in Interchange	Cars Placed for Unloading	Loads on Wheels at Destination As of 1/14/2020
CN				71	88
CP	6			175	100

Port Unloads

	01/14	01/13	Week To Date	Last Week
CN	53	87	140	256
CP	156	130	286	989

Age Profile of Loaded Cars Waiting Placement for Unloading

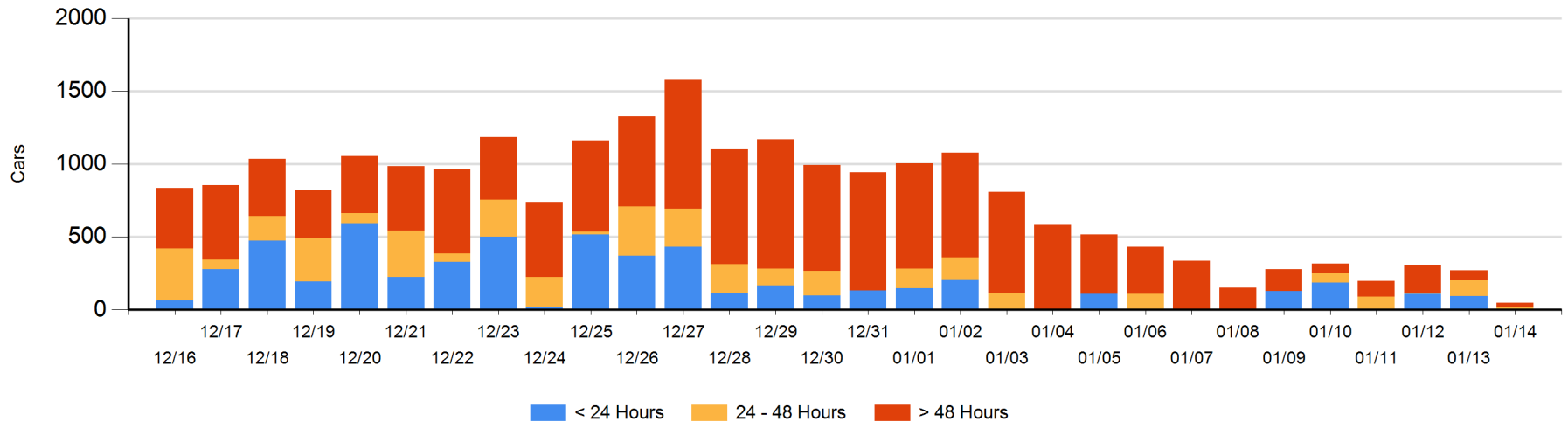
Today

	< 24 Hrs	24 - 48 Hrs	> 48-72 Hrs	> 72 Hrs	Total On Hand
CN		22	2		24
CP			13	11	24

Change in Last 24 Hours

	< 24 Hrs	24-48 Hrs	48 - 72 Hrs	> 72 Hrs
CN	-93	20	2	
CP		-112	12	-50

Loaded Cars on Hand Thunder Bay Waiting for Placement - Last 30 Days All Railways



Measurement Definitions

Loads on Wheels	<p>Count of loaded rail cars including all rail cars that have been released loaded at origin and have not been reported by the railway as unloaded at destination.</p> <p>Counts include all rail cars (hopper cars and boxcars) moving within a pipeline.</p>
Loads Not Moving	<p>Loaded rail cars for which the railways have not reported a movement event for 48 hours or more whether the rail car is at origin, enroute or at destination.</p>
Port Unloads	<p>Count of rail cars reported by railways as unloaded at the western port destinations of Vancouver, Prince Rupert and Thunder Bay.</p> <p>Unload counts include all rail cars (hopper cars and boxcars) unloaded by all receivers including major port terminals, transloaders and other receivers.</p>
Cars Arrived	<p>Count of rail cars reported as arrived at the destination railway terminal.</p>
Cars Received in Interchange	<p>Count of rail cars received in interchange by each railway within a destination railway terminal. Interchange activity is tracked for the Vancouver and Thunder Bay pipelines as applicable.</p>
Cars Delivered in Interchange	<p>Count of rail cars delivered in interchange by each railway within a destination railway terminal. Interchange activity is tracked for the Vancouver and Thunder Bay pipelines as applicable.</p>
Cars Placed for Unloading	<p>Count of rail cars reported by the railways as placed loaded at the receiver's facility for unloading.</p>
Loads on Wheels at Destination	<p>Count of rail cars that remain under load within the destination railway terminal including rail cars that have been reported as placed for unloading but not yet reported as unloaded.</p>
Waiting Placement for Unloading	<p>Count of rail cars that have been reported as arrived at the destination railway terminal but not reported as placed for unloading by the railway.</p> <p>For the Ports of Vancouver, Prince Rupert and Thunder Bay the count of rail cars waiting placement for unloading is categorized by age – i.e. the elapsed time from arrival at destination to the current report date.</p>