

**SPEED READ**

- Loads on wheels fell overnight, marking a decline in both CN and CP volumes. On a net basis, volumes declined due to lower volumes across all corridors.
- Network fluidity deteriorated overnight, led by a rise in idle car counts on both CN and CP by 7% (+129) and 15% (+196), respectively. The total count of cars for 4+ days on both railways fell 10% (-182) overnight - currently at 1,658 cars.
- Three days in Week 26 unloads now ahead of prior week's performance by more than 650 unloads, reflecting improved week over week performance at Vancouver and Prince Rupert offset by reduced unloads at Thunder Bay.

=====

**Loads on Wheels**

- Loads on wheels fell 10% (-1,115) overnight, due to reduced volumes on both CN and CP - combined total at 10,201 and 8% below the trailing 30-day average.
- On a net basis, the decline in loads on wheels indicates lower volumes across all corridors.
- CN volumes declined 6% (-402) overnight, with lower traffic in the Vancouver, E. Canada and Prince Rupert corridors offset by higher traffic in the USA/MEX and Thunder Bay corridors. System wide CN loads on wheels presently at 5,900 and 4% below the trailing 30-day average.
- CP volumes fell significantly by 14% (-701) overnight, driven by a decline in traffic across all corridors. CP system wide loads on wheels now at 4,182 and 11% below the trailing 30-day average.
- Vancouver currently at 6,891, fell 9% (-698) overnight, now 3% above the trailing 30-day average.
- The Prince Rupert pipeline currently at 1,420, fell 4% (-61) overnight and have now decreased for the ninth consecutive day, and 24% below the trailing 30-day average.
- Thunder Bay volumes fell significantly by 38% (-110) overnight - now at 177, the lowest seen in the last 30 days, and 72% below the trailing 30-day average, with 98% of traffic moving on CP.

**Hopper Car Rationing**

- Early reporting from shippers indicates that CN continued to cancel hopper car orders in week 25 on the heels of 730 cancellations in week 24.

**Loads Not Moving**

- **The count of cars not moving for 48+ hours increased 11% (+325) overnight, marking higher counts on both CN and CP. Idle car counts now at 3,381 and 7% below the trailing 30-day average.**
- CN
  - **The count of idle cars for 48+ hours increased 7% (+129) overnight - currently at 1,920 cars.**
  - The number of cars idle for 4+ days declined for the third consecutive day, down 19% (-272) overnight - currently at 1,130 cars.
  - The count of cars not moving for 7+ days fell for the third consecutive day, down 14% (-89) overnight - currently at 561 cars.
  - Vancouver represents 70% of all idle cars.
  - In total 87% of all idle cars are dwelling at origin locations.
- CP
  - **CP idle car counts for 48+ hours rose 15% (+196) overnight - currently at 1,461 cars.**
  - The number of cars idle for 4+ days increased 21% (+90) overnight and have now increased for the fourth consecutive day - presently at 528 cars.
  - The number of cars idle for 7+ days rose 25% (+18) overnight - currently at 89 cars.

- Vancouver accounts for 92% of all idle cars.
- In total 44% of all idle cars are dwelling at origin locations.

### **Port Performance**

- CN and CP reported a total of 1,106 cars unloaded at the three major ports, 23% above the trailing 30-day average. Three days in Week 26 unloads now ahead of last week's pace by more than 650 unloads, reflecting higher unloads at Vancouver and Prince Rupert offset by reduced unloads at Thunder Bay.
- Vancouver
  - 835 unloads reported by CN and CP at the Port of Vancouver; CN - 451 and CP - 384. Three days in Week 26 unloads are tracking ahead of last week's performance by about 600 unloads.
  - There are more than 1,850 cars on site at Vancouver with 900 cars arriving at the port in the last 24 hours.
  - CN and CP have 1,100 cars in British Columbia en route to Vancouver, with 750 cars at Kamloops and west, and 59% of traffic moving on CN.
- Prince Rupert
  - Prince Rupert reported 159 unloads, now ahead of last week's unloads after three days by 100 unloads.
  - Loads on wheels remain above 1,000 cars - currently at 1,420 cars.
  - There are 400 cars west of Jasper en route to Prince Rupert.
  - There are more than 150 cars on site at Prince Rupert with more than 100 cars arriving at the port in the last 24 hours.
- Thunder Bay
  - 112 unloads were reported at Thunder Bay yesterday. Three days in Week 26 unloads are tracking behind last week's pace by 17 unloads.
  - There are 7 cars on site at Thunder Bay with 1 car arriving at the port in the prior 24 hours.
  - There are more than 50 cars en route to Thunder Bay from Winnipeg and east.

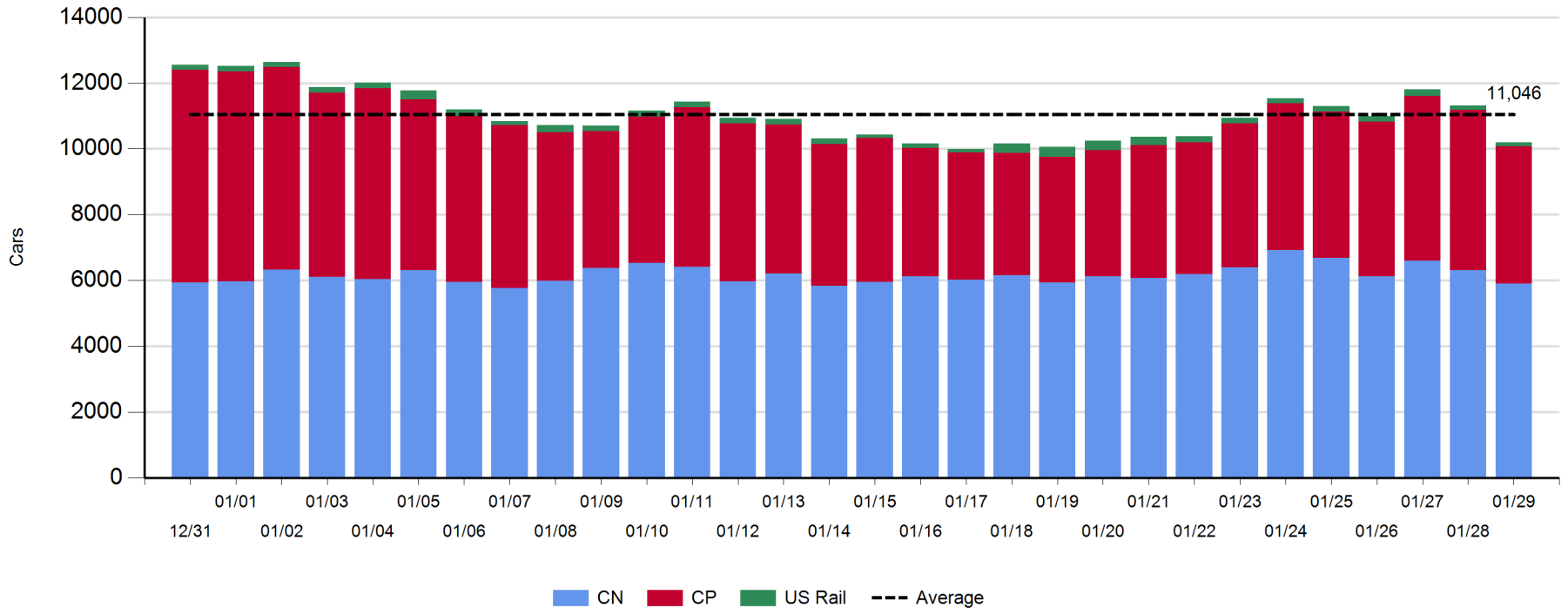
**Daily Loads on Wheels - 1/29/2020**

	E Canada	Prince Rupert	Thunder Bay	USA/MEX	Vancouver	Total
CN	722	1,420	4	278	3,476	5,900
CP	292	1	173	315	3,401	4,182
Short Line	3				14	17
US Rail				102		102
	1,017	1,421	177	695	6,891	10,201

**Change in Loads on Wheels - Prior 24 Hours**

	E Canada	Prince Rupert	Thunder Bay	USA/MEX	Vancouver	Total
CN	-158	-61	1	19	-203	-402
CP	-44	0	-111	-45	-501	-701
Short Line	3				6	9
US Rail				-21		-21
	-199	-61	-110	-47	-698	-1,115

**Loads on Wheels - Prior 30 Days**

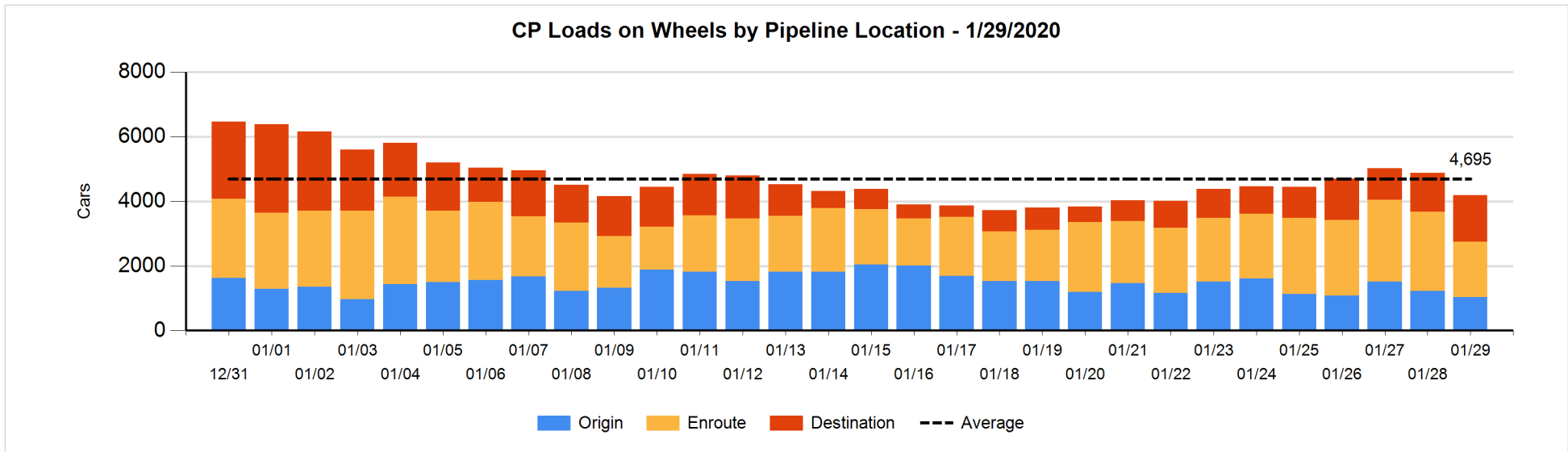
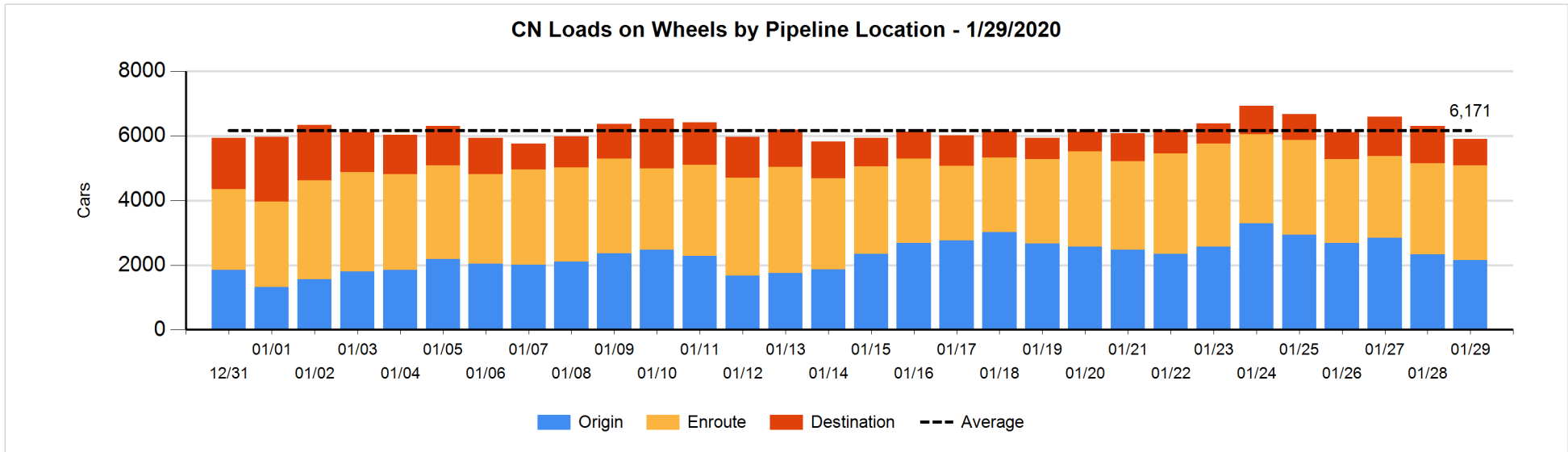


**Daily Loads on Wheels By Pipeline Location - 1/29/2020**

	E Canada	Prince Rupert	Thunder Bay	USA/MEX	Vancouver	Total
CN						
Origin	3	423		111	1,625	2,162
Enroute	613	821	1	144	1,347	2,926
Destination	106	176	3	23	504	812
	722	1,420	4	278	3,476	5,900
CP						
Origin	11			28	988	1,027
Enroute	280		169	221	1,052	1,722
Destination	1	1	4	66	1,361	1,433
	292	1	173	315	3,401	4,182
US Rail / Short Line						
Origin						
Enroute				82		82
Destination	3			20	14	37
	3			102	14	119

**Change in Daily Loads on Wheels By Pipeline Location - Prior 24 Hours**

	E Canada	Prince Rupert	Thunder Bay	USA/MEX	Vancouver	Total
CN						
Origin	-7	-101	-1	31	-88	-166
Enroute	-143	77	1	3	165	103
Destination	-8	-37	1	-15	-280	-339
	-158	-61	1	19	-203	-402
CP						
Origin	8		-2	-98	-100	-192
Enroute	-53		1	55	-742	-739
Destination	1	0	-110	-2	341	230
	-44	0	-111	-45	-501	-701
US Rail / Short Line						
Origin						
Enroute				1		1
Destination	3			-22	6	-13
	3			-21	6	-12

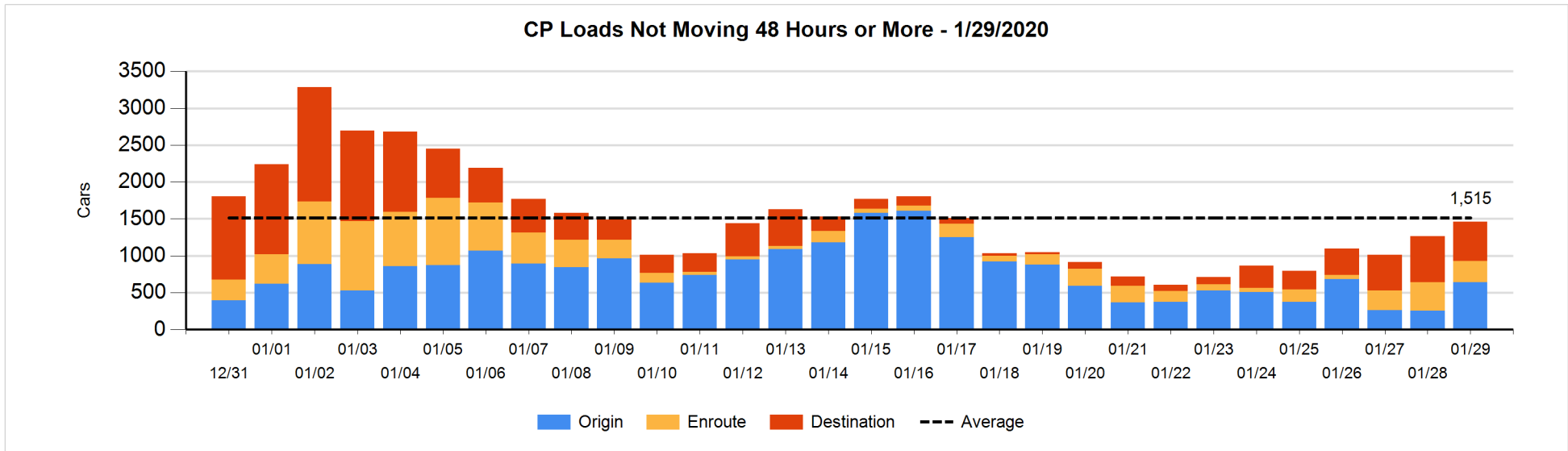
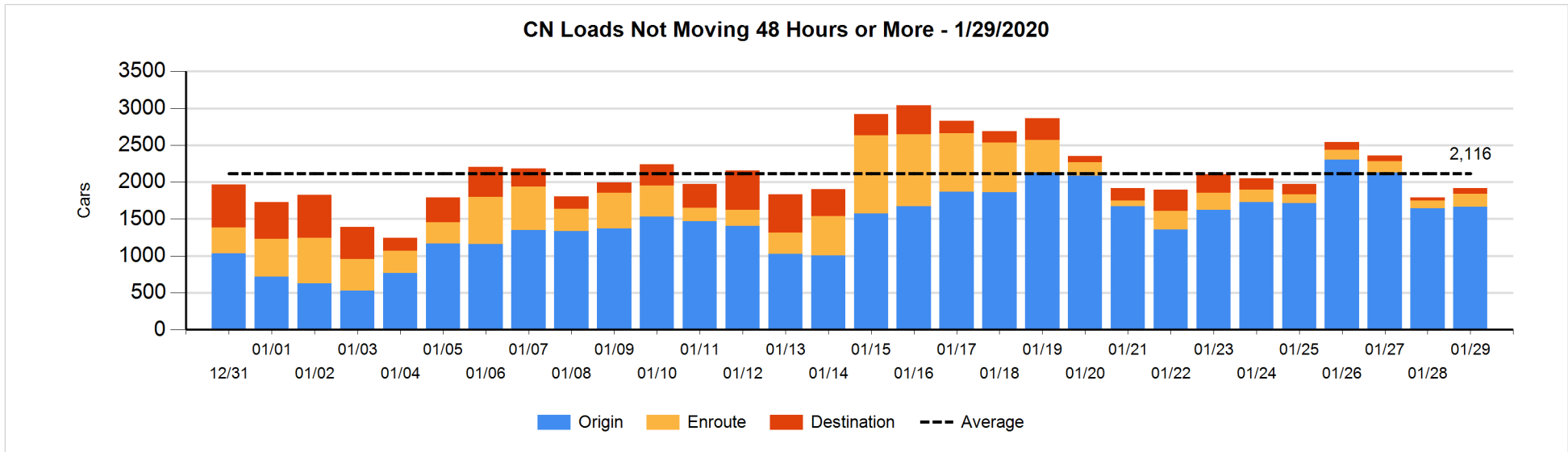


**Loads Not Moving 48 Hours or More - 1/29/2020**

	E Canada	Prince Rupert	Thunder Bay	USA/MEX	Vancouver	Total
<b>CN</b>						
Origin	2	325		49	1289	1665
Enroute	85	50		5	37	177
Destination	25	21	2	10	20	78
	112	396	2	64	1346	1920
<b>CP</b>						
Origin	3			25	616	644
Enroute	43			3	238	284
Destination			3	35	495	533
	46		3	63	1349	1461
<b>US Rail / Short Line</b>						
Origin						
Enroute				39		39
Destination				11	3	14
				50	3	53

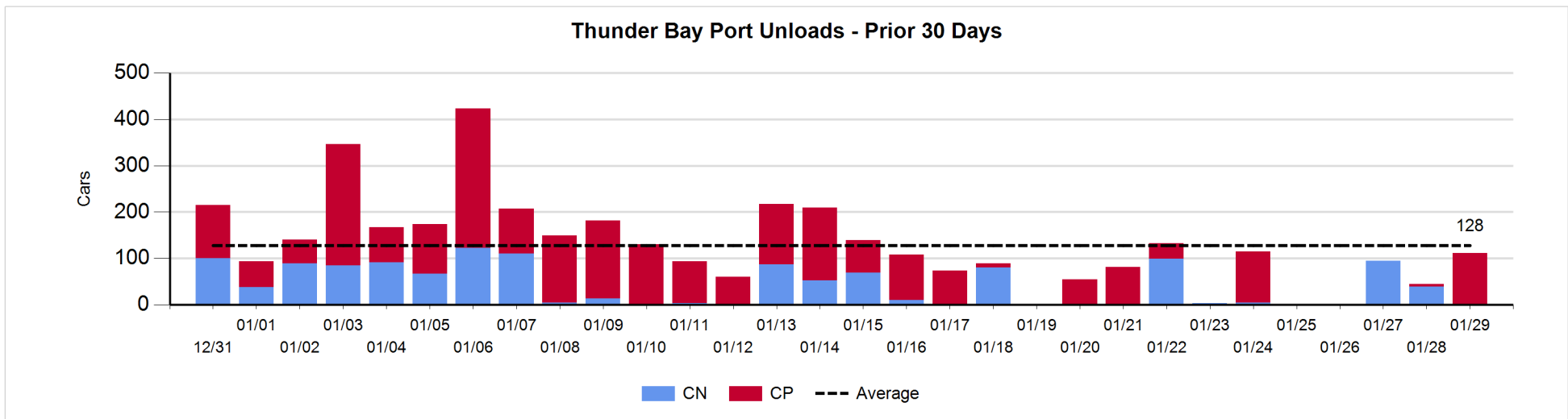
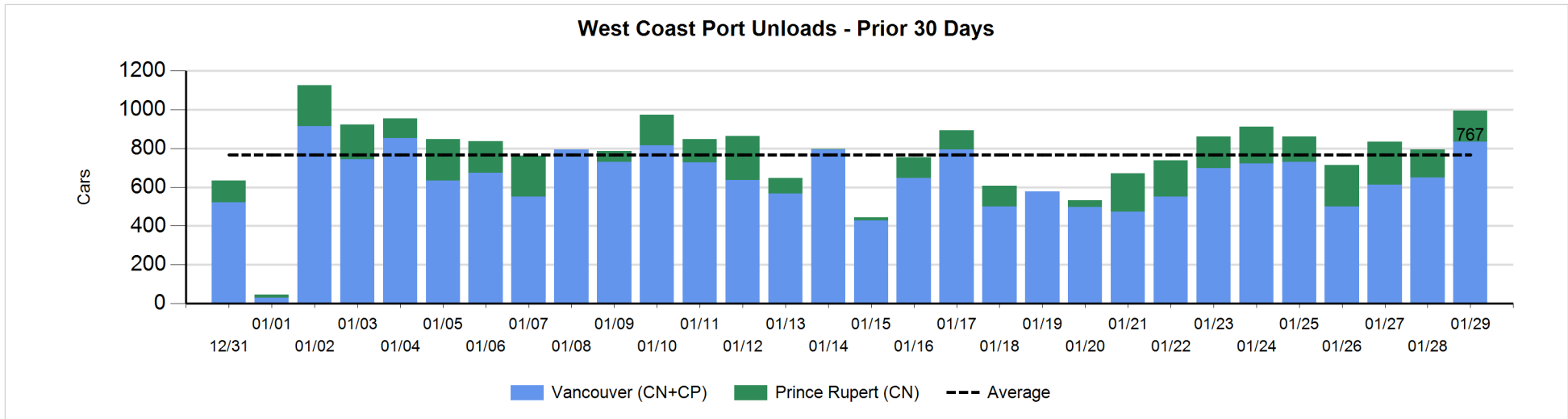
**Change in Loads Not Moving 48 Hours or More - 1/29/2020**

	E Canada	Prince Rupert	Thunder Bay	USA/MEX	Vancouver	Total
<b>CN</b>						
Origin	2	-187		2	202	19
Enroute	32	21		-2	22	73
Destination	13	21	1	0	2	37
	47	-145	1	0	226	129
<b>CP</b>						
Origin	0			25	364	389
Enroute	-47			-98	40	-105
Destination			-1	35	-122	-88
	-47		-1	-38	282	196
<b>US Rail / Short Line</b>						
Origin						
Enroute				-8		-8
Destination				0	-2	-2
				-8	-2	-10



**Port Unloads - 1/29/2020**

	Prince Rupert	Vancouver	West Coast Total	Thunder Bay	Total
CN	159	451	610		610
CP		384	384	112	496
	159	835	994	112	1,106





**Port Terminal Status**

**Vancouver**

Daily Activity for 1/29/2020

	Cars Arrived	Cars Received in Interchange	Cars Delivered in Interchange	Cars Placed for Unloading	Loads on Wheels at Destination As of 1/29/2020
CN	54	119	6	532	504
CP	841		125	380	1,361
SRY	1	12		7	14

**Port Unloads**

	01/29	01/28	Week To Date	Last Week
CN	451	385	1,098	2,026
CP	384	265	998	2,144
SRY	5	19	29	59

**Age Profile of Loaded Cars Waiting Placement for Unloading**

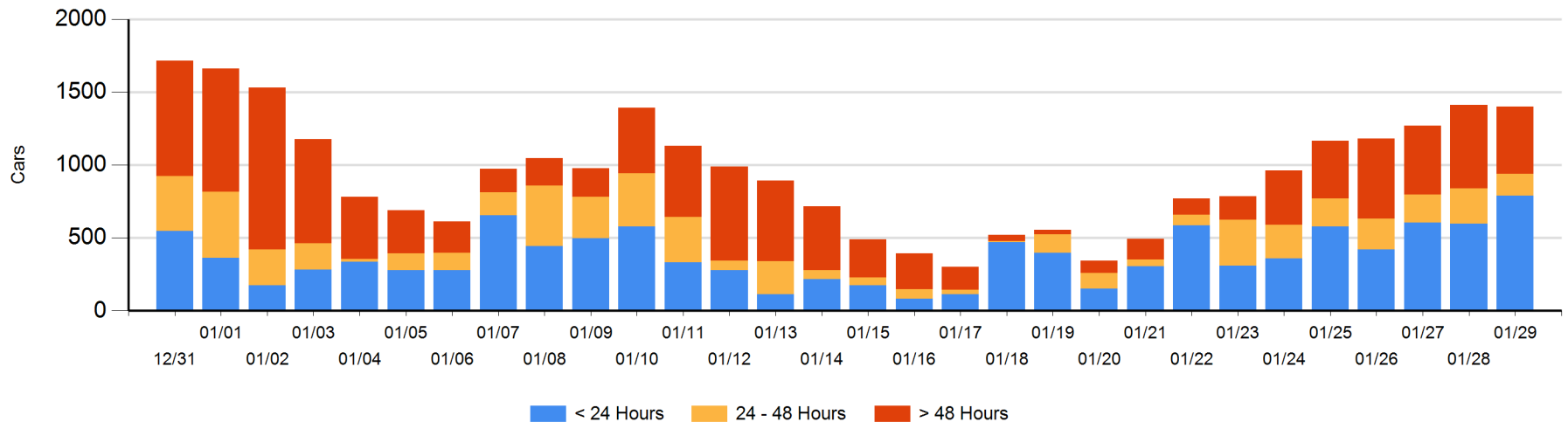
**Today**

	< 24 Hrs	24 - 48 Hrs	> 48-72 Hrs	> 72 Hrs	Total On Hand
CN	54	33	44	99	230
CP	736	115	31	287	1,169
SRY			2		2

**Change in Last 24 Hours**

	< 24 Hrs	24-48 Hrs	48 - 72 Hrs	> 72 Hrs
CN	-109	-106	4	-5
CP	300	17	-122	10
SRY		-2	2	

**Loaded Cars on Hand Vancouver Waiting for Placement - Last 30 Days All Railways**



**Port Terminal Status**

**Prince Rupert**

Daily Activity for 1/29/2020

	Cars Arrived	Cars Received in Interchange	Cars Delivered in Interchange	Cars Placed for Unloading	Loads on Wheels at Destination As of 1/29/2020
CN	122			228	176

**Port Unloads**

	01/29	01/28	Week To Date	Last Week
CN	159	145	528	1,119

**Age Profile of Loaded Cars Waiting Placement for Unloading**

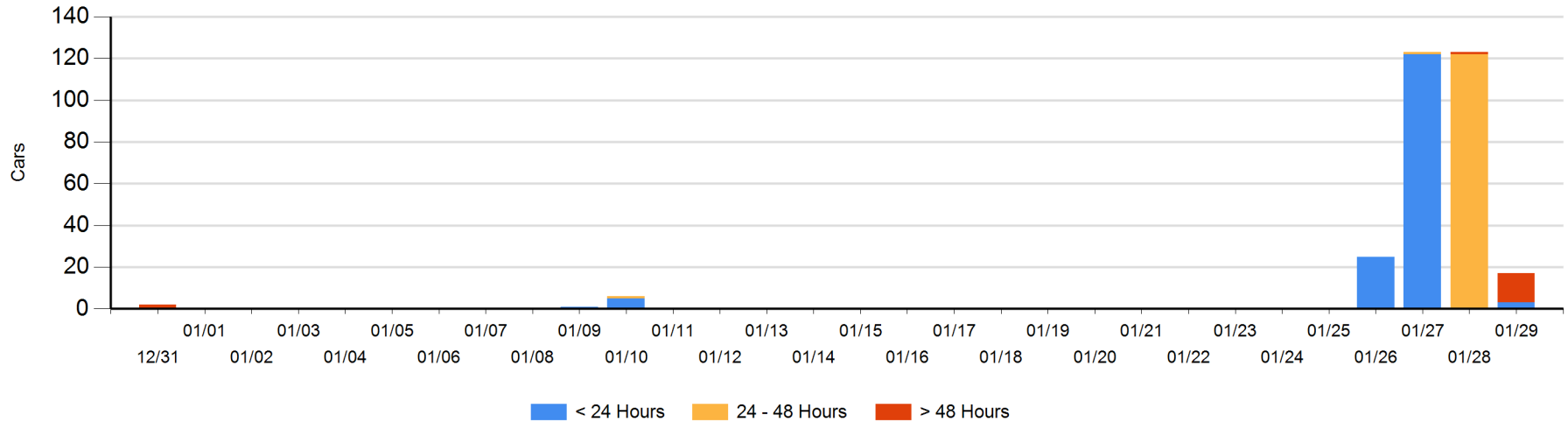
**Today**

	< 24 Hrs	24 - 48 Hrs	> 48-72 Hrs	> 72 Hrs	Total On Hand
CN	3		13	1	17

**Change in Last 24 Hours**

	< 24 Hrs	24-48 Hrs	48 - 72 Hrs	> 72 Hrs
CN	3	-122	12	1

Loaded Cars on Hand Prince Rupert Waiting for Placement - Last 30 Days All Railways



**Port Terminal Status**

**Thunder Bay**

Daily Activity for 1/29/2020

	Cars Arrived	Cars Received in Interchange	Cars Delivered in Interchange	Cars Placed for Unloading	Loads on Wheels at Destination As of 1/29/2020
CN					3
CP	1			106	4

**Port Unloads**

	01/29	01/28	Week To Date	Last Week
CN		39	134	108
CP	112	6	118	281

**Age Profile of Loaded Cars Waiting Placement for Unloading**

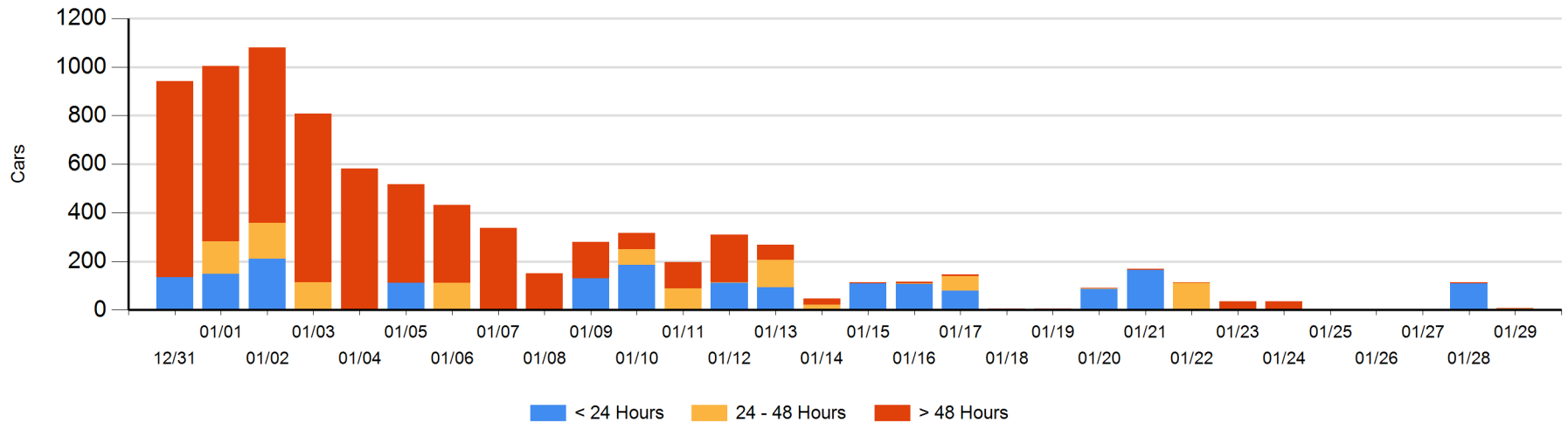
**Today**

	< 24 Hrs	24 - 48 Hrs	> 48-72 Hrs	> 72 Hrs	Total On Hand
CN					0
CP	1	5		3	9

**Change in Last 24 Hours**

	< 24 Hrs	24-48 Hrs	48 - 72 Hrs	> 72 Hrs
CN				
CP	-109	5		-1

**Loaded Cars on Hand Thunder Bay Waiting for Placement - Last 30 Days All Railways**



## Measurement Definitions

Loads on Wheels	<p>Count of loaded rail cars including all rail cars that have been released loaded at origin and have not been reported by the railway as unloaded at destination.</p> <p>Counts include all rail cars (hopper cars and boxcars) moving within a pipeline.</p>
Loads Not Moving	<p>Loaded rail cars for which the railways have not reported a movement event for 48 hours or more whether the rail car is at origin, enroute or at destination.</p>
Port Unloads	<p>Count of rail cars reported by railways as unloaded at the western port destinations of Vancouver, Prince Rupert and Thunder Bay.</p> <p>Unload counts include all rail cars (hopper cars and boxcars) unloaded by all receivers including major port terminals, transloaders and other receivers.</p>
Cars Arrived	<p>Count of rail cars reported as arrived at the destination railway terminal.</p>
Cars Received in Interchange	<p>Count of rail cars received in interchange by each railway within a destination railway terminal. Interchange activity is tracked for the Vancouver and Thunder Bay pipelines as applicable.</p>
Cars Delivered in Interchange	<p>Count of rail cars delivered in interchange by each railway within a destination railway terminal. Interchange activity is tracked for the Vancouver and Thunder Bay pipelines as applicable.</p>
Cars Placed for Unloading	<p>Count of rail cars reported by the railways as placed loaded at the receiver's facility for unloading.</p>
Loads on Wheels at Destination	<p>Count of rail cars that remain under load within the destination railway terminal including rail cars that have been reported as placed for unloading but not yet reported as unloaded.</p>
Waiting Placement for Unloading	<p>Count of rail cars that have been reported as arrived at the destination railway terminal but not reported as placed for unloading by the railway.</p> <p>For the Ports of Vancouver, Prince Rupert and Thunder Bay the count of rail cars waiting placement for unloading is categorized by age – i.e. the elapsed time from arrival at destination to the current report date.</p>