

**SPEED READ**

- Loads on wheels increased slightly overnight, reflecting a decline in CN traffic offset by higher CP volumes. On a net basis, volumes increased due to higher volumes in the Prince Rupert and E. Canada corridors.
- Network fluidity improved overnight, led by a decline in idle car counts on CP by 8% (-118) offset by an increase in idle car counts on CN (+9). The total count of cars for 4+ days on both railways rose 9% (+153) overnight - currently at 1,806 cars.
- Four days in Week 26 unloads now ahead of prior week's performance by 800 unloads, marking improved week over week performance at Vancouver and Prince Rupert offset by reduced unloads at Thunder Bay.

=====

**Loads on Wheels**

- Loads on wheels increased slightly (+39) overnight, due to reduced volumes on CN offset by higher volumes on CP - combined total at 10,293 and 7% below the trailing 30-day average.
- On a net basis, the decline in loads on wheels reflects higher volumes in the Prince Rupert and E. Canada corridors.
- CN volumes fell 1% (-62) overnight and have now decreased for the third consecutive day, with reduced volumes across all corridors other than Prince Rupert and Thunder Bay. System wide CN loads on wheels now at 5,891 and 6% below the trailing 30-day average.
- CP volumes rose 3% (+113) overnight, driven by an increase in traffic in the Vancouver and E. Canada corridors. CP system wide loads on wheels now at 4,296 and 7% below the trailing 30-day average.
- Vancouver now at 6,844, fell 1% (-48) overnight and have now decreased for the third consecutive day, now 2% above the trailing 30-day average.
- The Prince Rupert pipeline currently at 1,579, rose 7% (+105) overnight, and 16% below the trailing 30-day average.
- Thunder Bay volumes remained unchanged overnight - now at 177, the lowest seen in the last 30 days, and 70% below the trailing 30-day average, with 98% of traffic moving on CP.

**Hopper Car Rationing**

- Early reporting from shippers indicates that CN continued to cancel hopper car orders in week 25 on the heels of 730 cancellations in week 24.

**Loads Not Moving**

- **The count of cars not moving for 48+ hours fell 3% (-109) overnight, reflecting reduced counts on CP offset by higher counts on CN. Idle car counts now at 3,267 and 10% below the trailing 30-day average.**
- CN
  - **The count of idle cars for 48+ hours increased slightly by (+9) overnight - now at 1,923 cars.**
  - The number of cars idle for 4+ days fell marginally by (-4) overnight and have now decreased for the fourth consecutive day - now at 1,120 cars.
  - The count of cars not moving for 7+ days fell for the fourth consecutive day, down 1% (-5) overnight - now at 550 cars.
  - Vancouver represents 70% of all idle cars.
  - In total 77% of all idle cars are dwelling at origin locations.
- CP
  - **CP idle car counts for 48+ hours decreased 8% (-118) overnight - now at 1,344 cars.**
  - The number of cars idle for 4+ days gained for the fifth consecutive day, up 30% (+157) overnight - currently at 686 cars.
  - The number of cars idle for 7+ days nearly doubled overnight (+88) overnight - now at 178 cars.

- Vancouver accounts for 95% of all idle cars.
- In total 34% of all idle cars are dwelling at origin locations.

### **Port Performance**

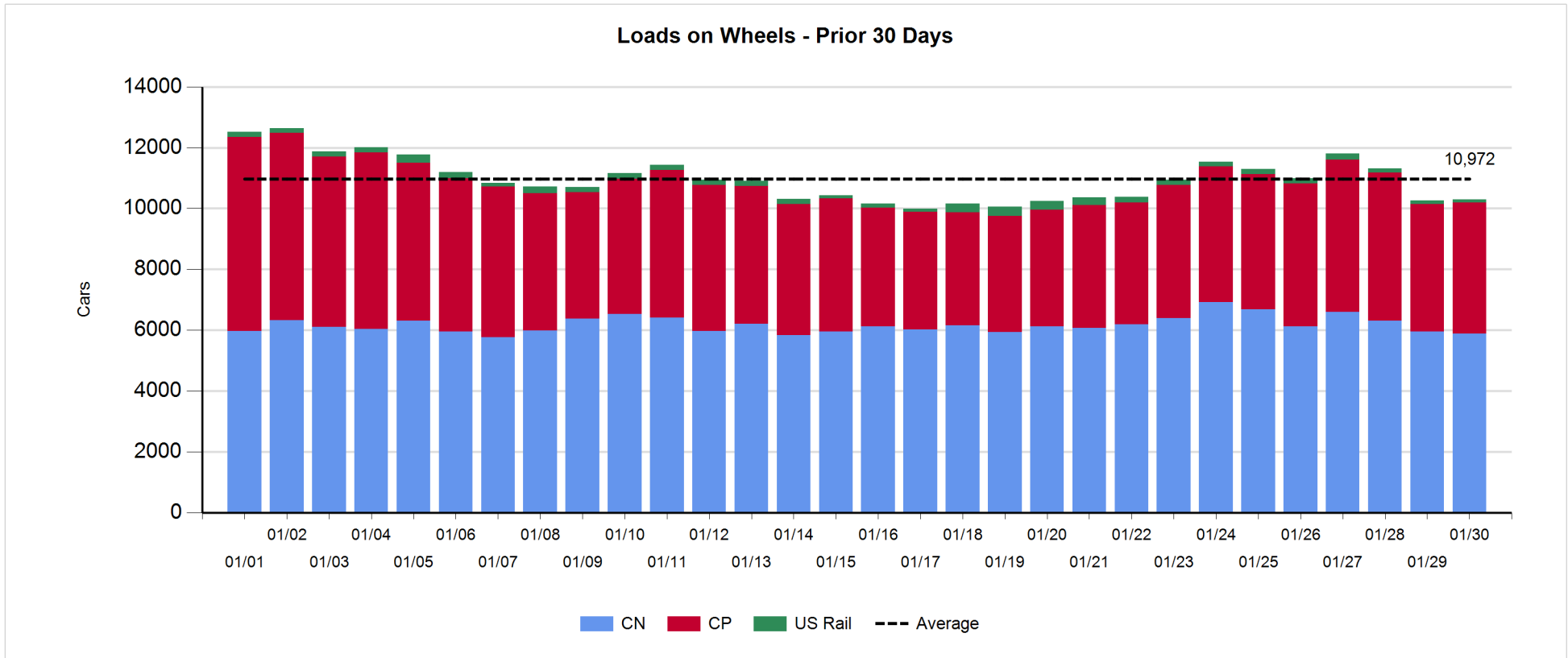
- CN and CP reported a total of 1,003 cars unloaded at the three major ports, 11% above the trailing 30-day average. Four days in Week 26 unloads now ahead of last week's pace by 800 unloads, marking higher unloads at Vancouver and Prince Rupert offset by reduced unloads at Thunder Bay.
- Vancouver
  - 805 unloads reported by CN and CP at the Port of Vancouver; CN - 436 and CP - 369. Four days in Week 26 unloads are tracking ahead of last week's performance by more than 650 unloads.
  - There are 1,100 cars on site at Vancouver with only 50 cars arriving at the port in the last 24 hours.
  - CN and CP have more than 1,500 cars in British Columbia en route to Vancouver, with more than 700 cars at Kamloops and west, and 55% of traffic moving on CN.
- Prince Rupert
  - Prince Rupert reported 198 unloads, now ahead of last week's unloads after four days by 150 unloads.
  - Loads on wheels remain above 1,000 cars - currently at 1,578 cars.
  - There are more than 300 cars west of Jasper en route to Prince Rupert.
  - There are 100 cars on site at Prince Rupert with more than 100 cars arriving at the port in the last 24 hours.
- Thunder Bay
  - Zero unloads were reported at Thunder Bay yesterday. Four days in Week 26 unloads are tracking behind last week's pace by 21 unloads.
  - There are 7 cars on site at Thunder Bay with zero cars arriving at the port in the prior 24 hours.
  - There are approximately 150 cars en route to Thunder Bay from Winnipeg and east.

**Daily Loads on Wheels - 1/30/2020**

	E Canada	Prince Rupert	Thunder Bay	USA/MEX	Vancouver	Total
CN	691	1,578	4	274	3,344	5,891
CP	349	1	173	300	3,473	4,296
Short Line					27	27
US Rail				79		79
	1,040	1,579	177	653	6,844	10,293

**Change in Loads on Wheels - Prior 24 Hours**

	E Canada	Prince Rupert	Thunder Bay	USA/MEX	Vancouver	Total
CN	-31	105	0	-4	-132	-62
CP	57	0	0	-15	71	113
Short Line	-3				13	10
US Rail				-22		-22
	23	105	0	-41	-48	39

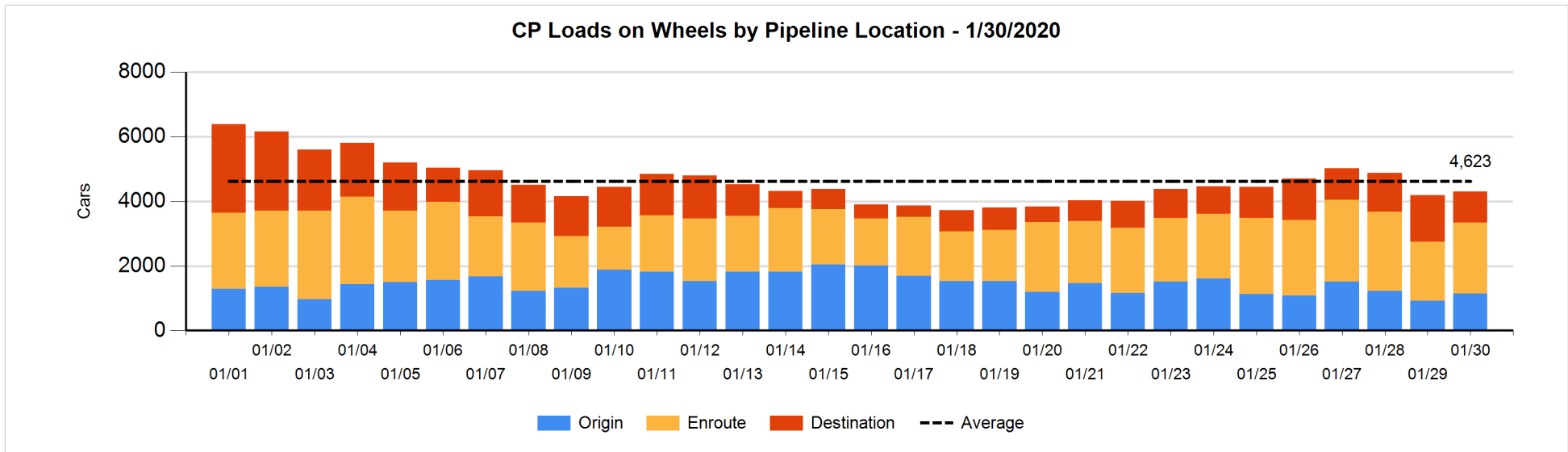
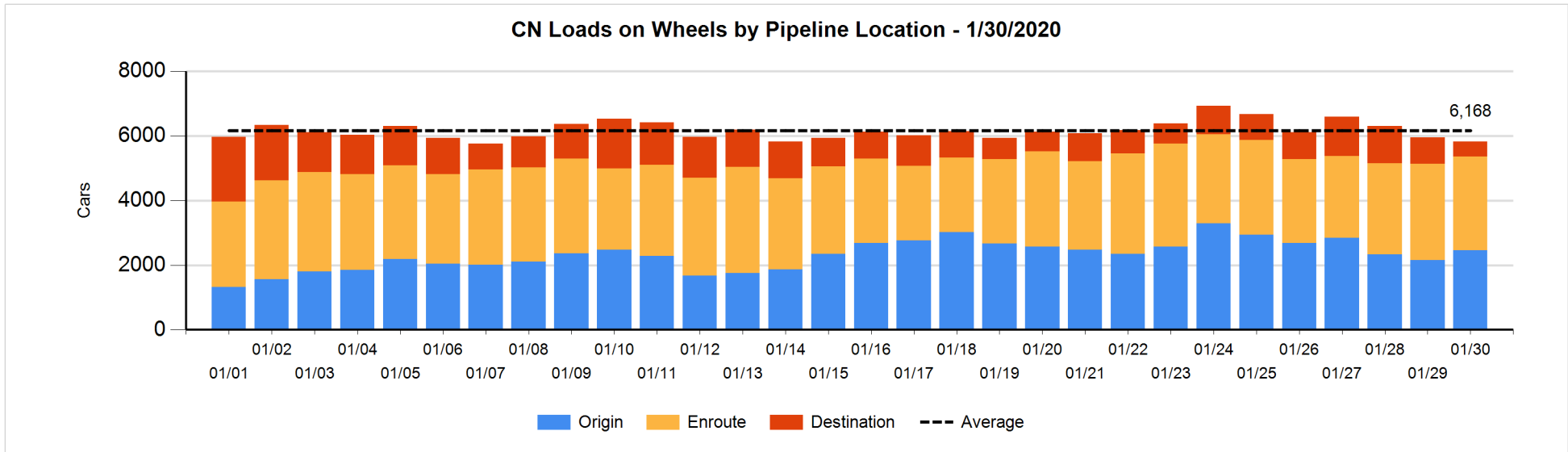


**Daily Loads on Wheels By Pipeline Location - 1/30/2020**

	E Canada	Prince Rupert	Thunder Bay	USA/MEX	Vancouver	Total
CN						
Origin	13	614		117	1,722	2,466
Enroute	526	856	1	145	1,373	2,901
Destination	152	108	3	12	175	450
	691	1,578	4	274	3,270	5,817
CP						
Origin	116			32	996	1,144
Enroute	232		169	223	1,578	2,202
Destination	1	1	4	45	899	950
	349	1	173	300	3,473	4,296
US Rail / Short Line						
Origin						
Enroute				70		70
Destination				9	27	36
				79	27	106

**Change in Daily Loads on Wheels By Pipeline Location - Prior 24 Hours**

	E Canada	Prince Rupert	Thunder Bay	USA/MEX	Vancouver	Total
CN						
Origin	10	197		6	97	310
Enroute	-87	-24	0	1	26	-84
Destination	46	-68	0	-11	-329	-362
	-31	105	0	-4	-206	-136
CP						
Origin	105			4	120	229
Enroute	-48		0	2	414	368
Destination	0	0	0	-21	-463	-484
	57	0	0	-15	71	113
US Rail / Short Line						
Origin						
Enroute				-12		-12
Destination	-3			-10	13	0
	-3			-22	13	-12



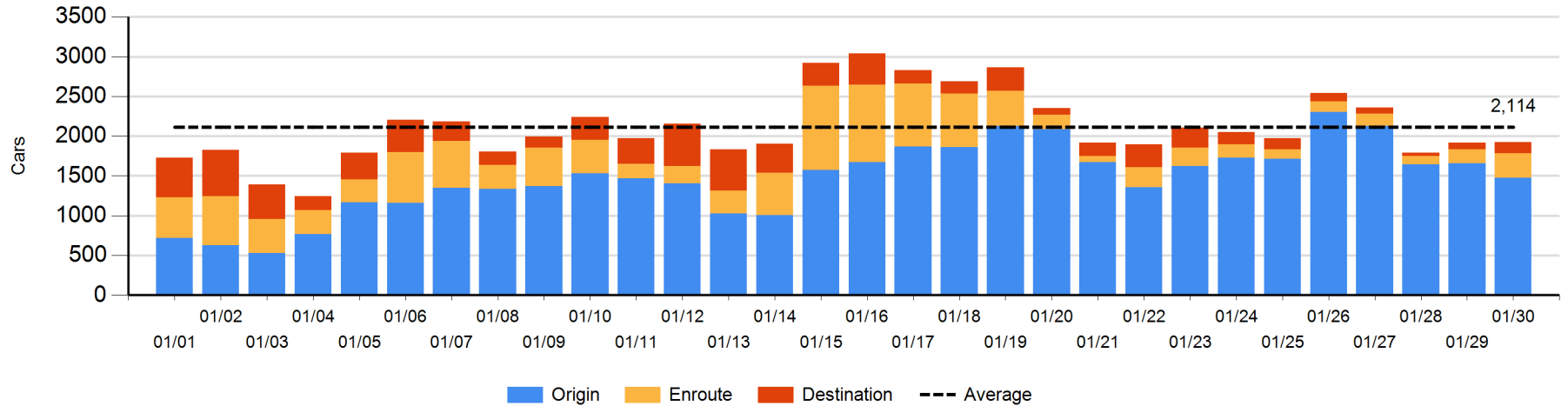
**Loads Not Moving 48 Hours or More - 1/30/2020**

	E Canada	Prince Rupert	Thunder Bay	USA/MEX	Vancouver	Total
CN						
Origin	2	213		73	1185	1473
Enroute	110	61		8	132	311
Destination	60	34	2	7	36	139
	172	308	2	88	1353	1923
CP						
Origin	3			26	431	460
Enroute	2			5	248	255
Destination			3	24	602	629
	5		3	55	1281	1344
US Rail / Short Line						
Origin						
Enroute				40		40
Destination				4	1	5
				44	1	45

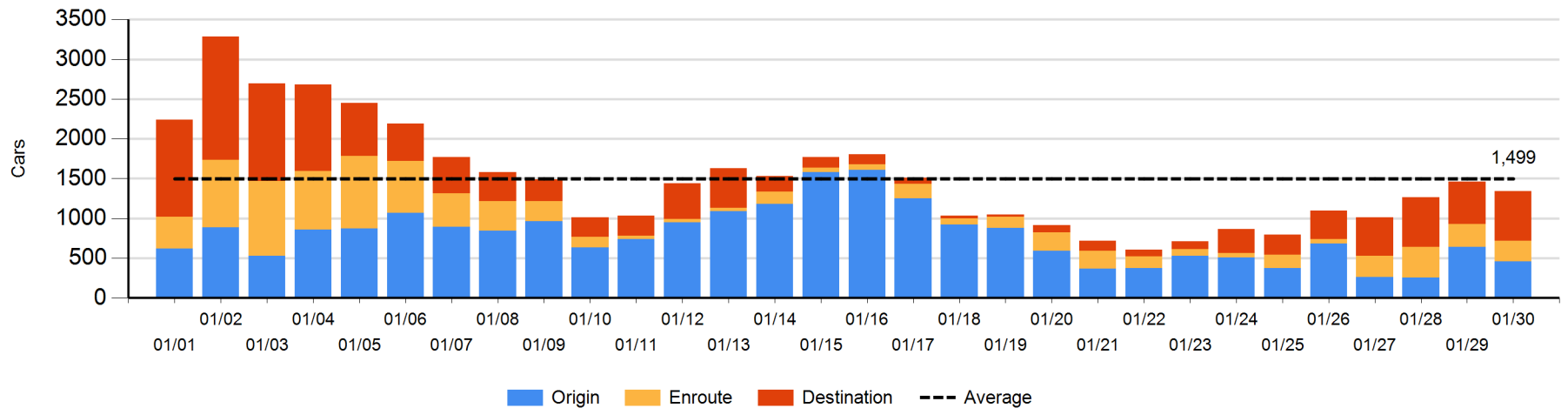
**Change in Loads Not Moving 48 Hours or More - 1/30/2020**

	E Canada	Prince Rupert	Thunder Bay	USA/MEX	Vancouver	Total
CN						
Origin	0	-106		24	-104	-186
Enroute	25	11		3	95	134
Destination	35	13	0	-3	16	61
	60	-82	0	24	7	9
CP						
Origin	0			1	-185	-184
Enroute	-41			2	10	-29
Destination			0	-11	106	95
	-41		0	-8	-69	-118
US Rail / Short Line						
Origin						
Enroute				1		1
Destination				-6	-2	-8
				-5	-2	-7

**CN Loads Not Moving 48 Hours or More - 1/30/2020**

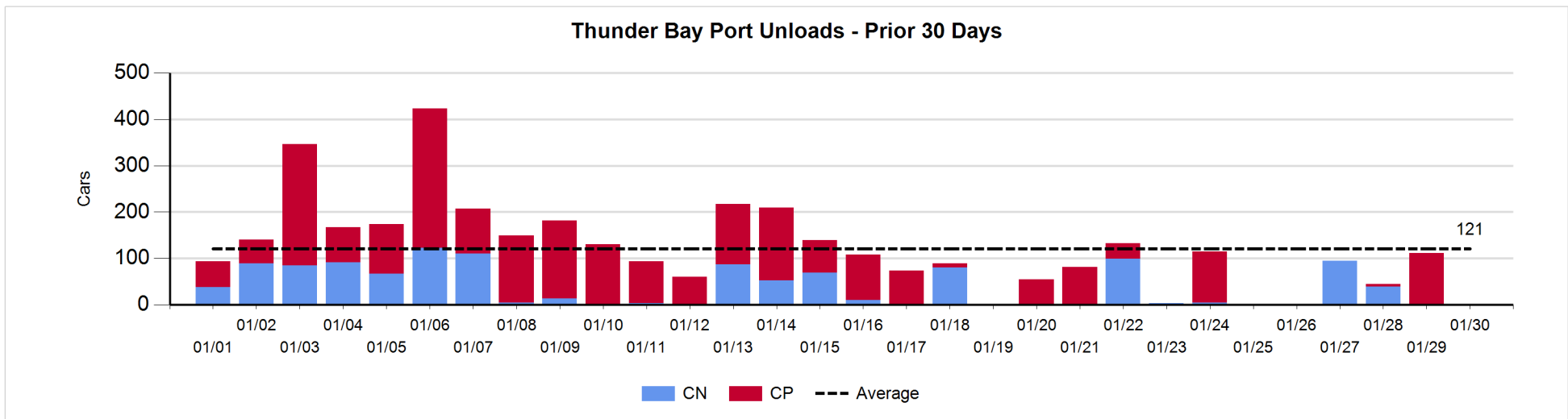
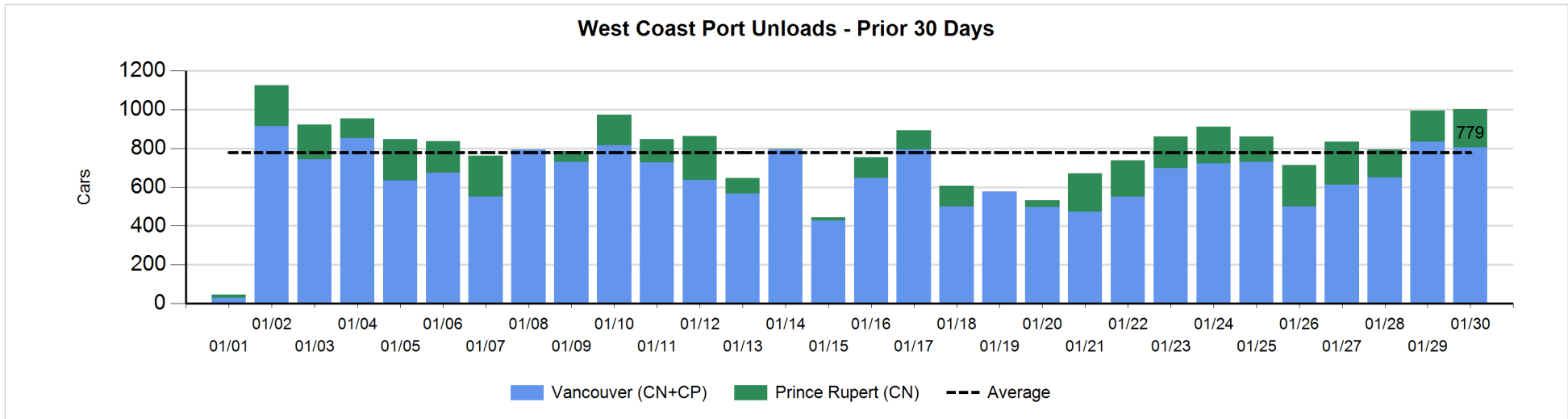


**CP Loads Not Moving 48 Hours or More - 1/30/2020**



Port Unloads - 1/30/2020

	Prince Rupert	Vancouver	West Coast Total	Thunder Bay	Total
CN	198	436	634		634
CP		369	369		369
	198	805	1,003		1,003





**Port Terminal Status**

**Vancouver**

Daily Activity for 1/30/2020

	Cars Arrived	Cars Received in Interchange	Cars Delivered in Interchange	Cars Placed for Unloading	Loads on Wheels at Destination As of 1/30/2020
CN	14	134	14	237	175
CP	20	14	149	368	899
SRY		15		5	27

**Port Unloads**

	01/30	01/29	Week To Date	Last Week
CN	436	451	1,534	2,026
CP	369	384	1,367	2,144
SRY	10	5	39	59

**Age Profile of Loaded Cars Waiting Placement for Unloading**

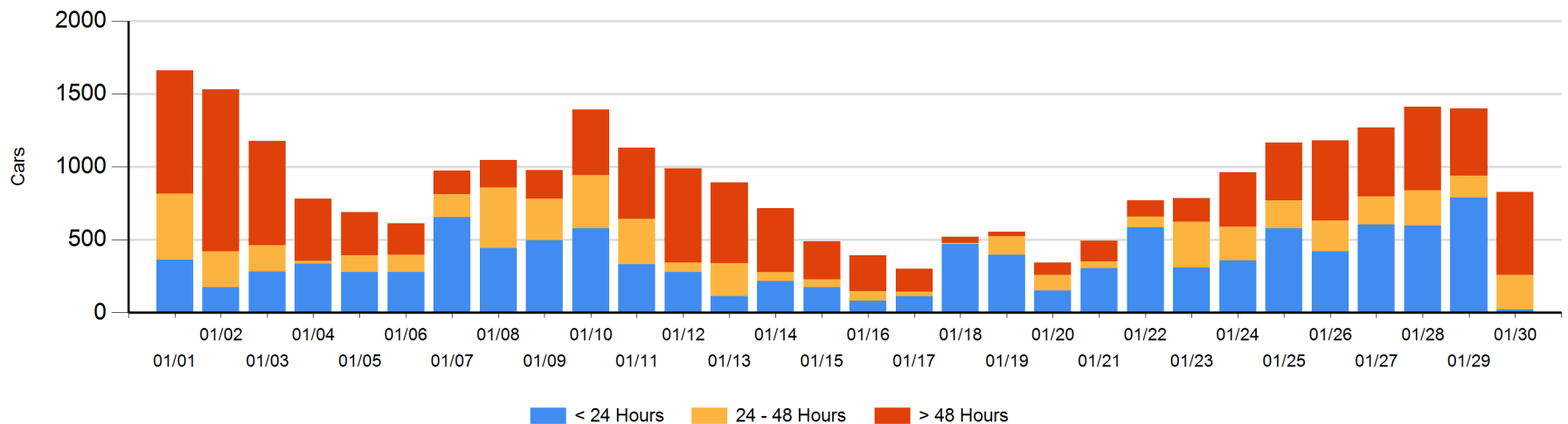
**Today**

	< 24 Hrs	24 - 48 Hrs	> 48-72 Hrs	> 72 Hrs	Total On Hand
CN		49	28	124	201
CP	20	192	101	313	626
SRY					0

**Change in Last 24 Hours**

	< 24 Hrs	24-48 Hrs	48 - 72 Hrs	> 72 Hrs
CN	-54	16	-16	25
CP	-716	77	70	26
SRY			-2	

**Loaded Cars on Hand Vancouver Waiting for Placement - Last 30 Days All Railways**



**Port Terminal Status**

**Prince Rupert**

Daily Activity for 1/30/2020

	Cars Arrived	Cars Received in Interchange	Cars Delivered in Interchange	Cars Placed for Unloading	Loads on Wheels at Destination As of 1/30/2020
CN	129			130	108

**Port Unloads**

	01/30	01/29	Week To Date	Last Week
CN	198	159	726	1,119

**Age Profile of Loaded Cars Waiting Placement for Unloading**

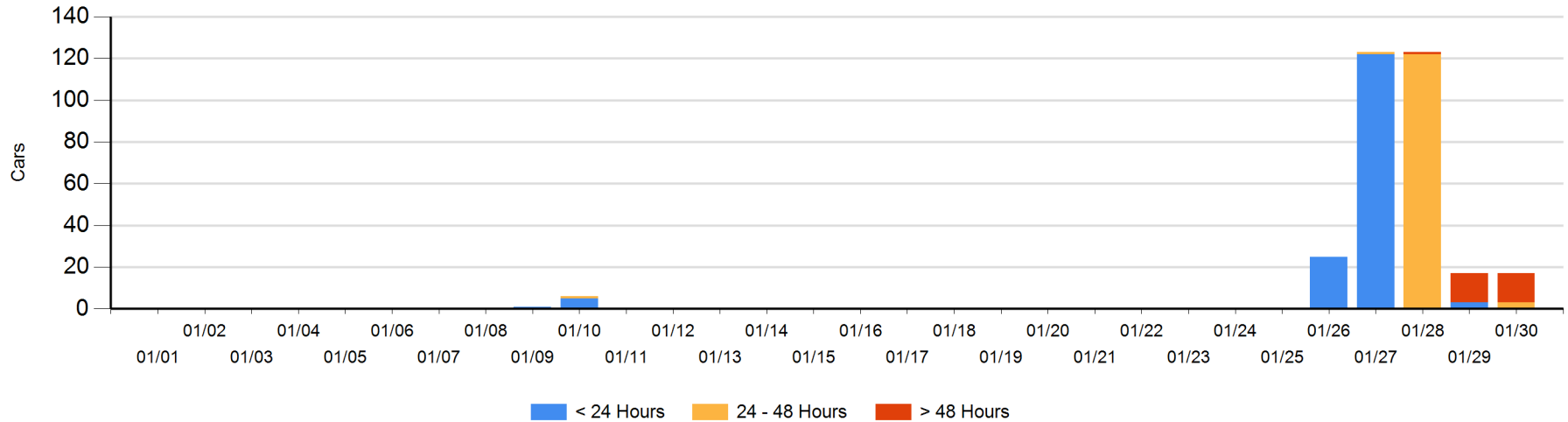
**Today**

	< 24 Hrs	24 - 48 Hrs	> 48-72 Hrs	> 72 Hrs	Total On Hand
CN		3		14	17

**Change in Last 24 Hours**

	< 24 Hrs	24-48 Hrs	48 - 72 Hrs	> 72 Hrs
CN	-3	3	-13	13

Loaded Cars on Hand Prince Rupert Waiting for Placement - Last 30 Days All Railways



**Port Terminal Status**

**Thunder Bay**

Daily Activity for 1/30/2020

	Cars Arrived	Cars Received in Interchange	Cars Delivered in Interchange	Cars Placed for Unloading	Loads on Wheels at Destination As of 1/30/2020
CN					3
CP					4

**Port Unloads**

	01/30	01/29	Week To Date	Last Week
CN			134	108
CP		112	118	281

**Age Profile of Loaded Cars Waiting Placement for Unloading**

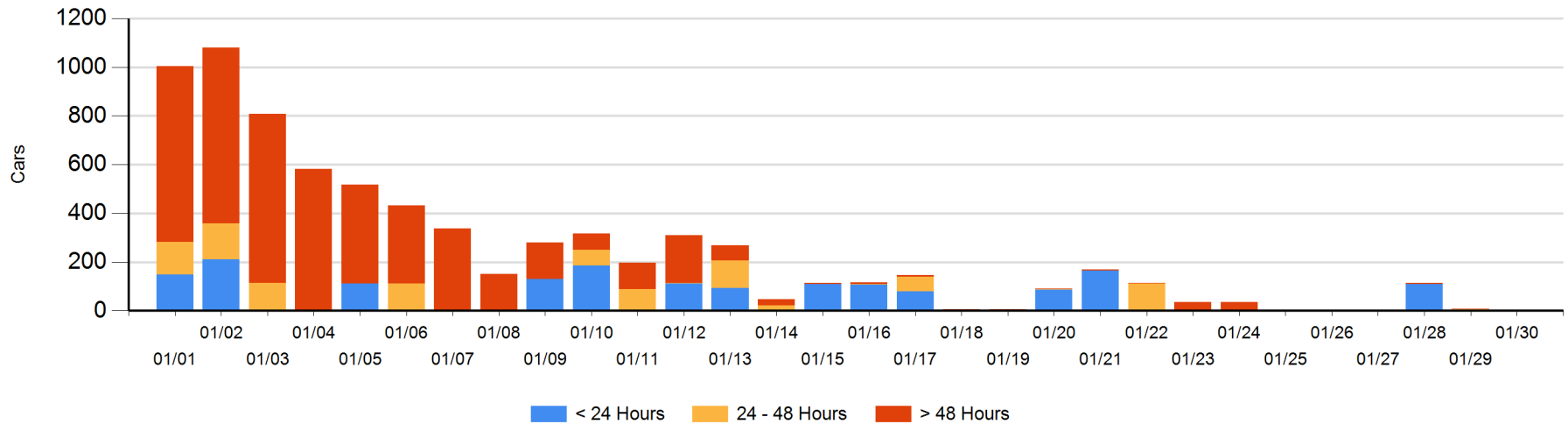
**Today**

	< 24 Hrs	24 - 48 Hrs	> 48-72 Hrs	> 72 Hrs	Total On Hand
CN					0
CP		1		3	4

**Change in Last 24 Hours**

	< 24 Hrs	24-48 Hrs	48 - 72 Hrs	> 72 Hrs
CN				
CP	-1	-4		0

**Loaded Cars on Hand Thunder Bay Waiting for Placement - Last 30 Days All Railways**



## Measurement Definitions

Loads on Wheels	<p>Count of loaded rail cars including all rail cars that have been released loaded at origin and have not been reported by the railway as unloaded at destination.</p> <p>Counts include all rail cars (hopper cars and boxcars) moving within a pipeline.</p>
Loads Not Moving	<p>Loaded rail cars for which the railways have not reported a movement event for 48 hours or more whether the rail car is at origin, enroute or at destination.</p>
Port Unloads	<p>Count of rail cars reported by railways as unloaded at the western port destinations of Vancouver, Prince Rupert and Thunder Bay.</p> <p>Unload counts include all rail cars (hopper cars and boxcars) unloaded by all receivers including major port terminals, transloaders and other receivers.</p>
Cars Arrived	<p>Count of rail cars reported as arrived at the destination railway terminal.</p>
Cars Received in Interchange	<p>Count of rail cars received in interchange by each railway within a destination railway terminal. Interchange activity is tracked for the Vancouver and Thunder Bay pipelines as applicable.</p>
Cars Delivered in Interchange	<p>Count of rail cars delivered in interchange by each railway within a destination railway terminal. Interchange activity is tracked for the Vancouver and Thunder Bay pipelines as applicable.</p>
Cars Placed for Unloading	<p>Count of rail cars reported by the railways as placed loaded at the receiver's facility for unloading.</p>
Loads on Wheels at Destination	<p>Count of rail cars that remain under load within the destination railway terminal including rail cars that have been reported as placed for unloading but not yet reported as unloaded.</p>
Waiting Placement for Unloading	<p>Count of rail cars that have been reported as arrived at the destination railway terminal but not reported as placed for unloading by the railway.</p> <p>For the Ports of Vancouver, Prince Rupert and Thunder Bay the count of rail cars waiting placement for unloading is categorized by age – i.e. the elapsed time from arrival at destination to the current report date.</p>