

## SPEED READ

- Loads on wheels:
  - On a network basis loads on wheels declined slightly overnight reflecting lower volumes on CP offset by slightly higher volumes on CN.
  - For CN the upward trajectory continues to be driven principally by traffic levels in the Vancouver and eastern Canada corridors. At more than 3,600 cars today volumes in the Vancouver corridor for CN continue to trend upwards over the last few weeks.
  - Offsetting this to some extent is a downward trend in traffic volumes in the Prince Rupert corridor which have now declined for six consecutive days down from a peak last week of more than 2,100 cars to less than 1,400 cars today.
  - CP volumes while down somewhat from yesterday remain near 5,000 cars - comparable to the level seen a couple of weeks ago and up from a daily average of 4,600 cars per day last week. The higher volumes seen over the last two days, as compared to last week, are attributable to an increase in CP's Vancouver and eastern Canada corridors.
- Cars Not Moving:
  - The count of idle loaded cars is effectively unchanged from yesterday with a decline on CP and an increase on CN. These levels continue to be range bound between 2300 - 2700 cars per day.
  - While having declined significantly early last week, CP counts had subsequently risen considerably at the tail end of last week, more than doubling over the course of three days from a low of less than 500 cars to more than 1,000 cars.
- Port Unloads
  - West coast port unloads declined slightly overnight although remained in line with performance over the course of the last 10 days. West coast unloads have now been above 1,000 cars per day for 10 of the last 13 days averaging nearly 1,100 cars per day during that time.

=====

## Loads on Wheels

- Loads on wheels declined slightly by 1% (-17) overnight due to reduced traffic on CP offset by higher volumes on CN - combined total at 11,879 and 4% above the trailing 30-day average.
- On a net basis, the decline in loads on wheels reflects lower volumes in the Prince Rupert and USA/Mexico corridors offset by nominally higher volumes in other corridors.
- CN volumes increased 2% (+112) overnight with higher volumes in the Vancouver and eastern Canada corridors offset by lower volumes in the Prince Rupert and USA/Mexico corridors. System wide CN loads on wheels now at 6,793 - 4% above the trailing 30-day average.
- CP volumes decreased 4% (-189) overnight reflecting lower volumes in the eastern Canada and Vancouver corridors while other corridors were unchanged. CP system wide loads on wheels presently at 4,938 and 5% above the trailing 30-day average.
- Vancouver now at 7,069 increased for the third consecutive day, up slightly overnight and 3% above the trailing 30-day average.
- The Prince Rupert pipeline now at 1,327 declined for the sixth consecutive day, down 13% (-193) and now at the lowest level seen in the last thirty days and 25% below the trailing 30-day average.
- Thunder Bay volumes were unchanged overnight - now at 786.

## Hopper Car Rationing

- CN rationed 509 hopper car orders in week 32 (Mar 8 - 14) down from 902 in week 31. The level of order rationing has now declined for three consecutive weeks - down from a peak of nearly 3,200 in week 29.

### Loads Not Moving

- **The count of cars not moving for 48+ hours decreased marginally by 1% (-19) overnight, reflecting reduced counts on CP offset by higher counts on CN. Idle car counts presently at 2,406 and 16% below the trailing 30-day average.**
- CN
  - **The count of idle cars for 48+ hours increased 10% (+133) overnight - presently at 1,480 cars.**
  - The number of cars idle for 4+ days increased 12% (+96) overnight - now at 886 cars.
  - The count of cars not moving for 7+ days fell slightly overnight - currently at 420 cars.
  - Vancouver represents 47% of all idle cars.
  - In total 51% of all idle cars are dwelling at origin locations.
- CP
  - **CP idle car counts for 48+ hours declined 14% (-152) overnight - now at 926 cars.**
  - The number of cars idle for 4+ days fell 14% (-57) overnight - now at 349 cars.
  - The number of cars idle for 7+ days fell marginally overnight - now at 97 cars.
  - Vancouver accounts for 75% of all idle cars.
  - In total 61% of all idle cars are dwelling at origin locations.

### Port Performance

- CN and CP reported a total of 899 cars unloaded at the three major ports - 10% below the trailing 30-day average. Week 33 unloads concluded above last week's performance by more than 300 unloads reflecting higher unloads at Prince Rupert and Thunder Bay offset by slightly lower unloads at Vancouver.
- Vancouver
  - 711 unloads reported by CN and CP at the Port of Vancouver; CN - 372 and CP - 339. Week 33 unloads finished behind last week by slightly more than 100 unloads.
  - There are more than 1,600 cars on site at Vancouver with more than 1,050 cars arriving at the port in the last 24 hours.
  - CN and CP have 1,400 cars in British Columbia en route to Vancouver, with 550 cars at Kamloops and west, and 57% of traffic currently moving on CP.
- Prince Rupert
  - Prince Rupert reported 188 unloads, exceeded last week's performance by 150 unloads.
  - Loads on wheels presently at 1,327 cars - the lowest level seen in the last 30 days.
  - There are more than 600 cars west of Jasper en route to Prince Rupert.
  - There are more than 150 cars on site with more than 350 cars arriving at the Port in the last 24 hours.
- Thunder Bay
  - Zero unloads were reported at Thunder Bay yesterday. Week 33 unloads finished ahead of last week by more than 250 unloads.
  - There are approximately 300 cars on site at Thunder Bay with no cars arriving at the port in the prior 24 hours.
  - There are approximately 100 cars en route to Thunder Bay from Winnipeg and east.

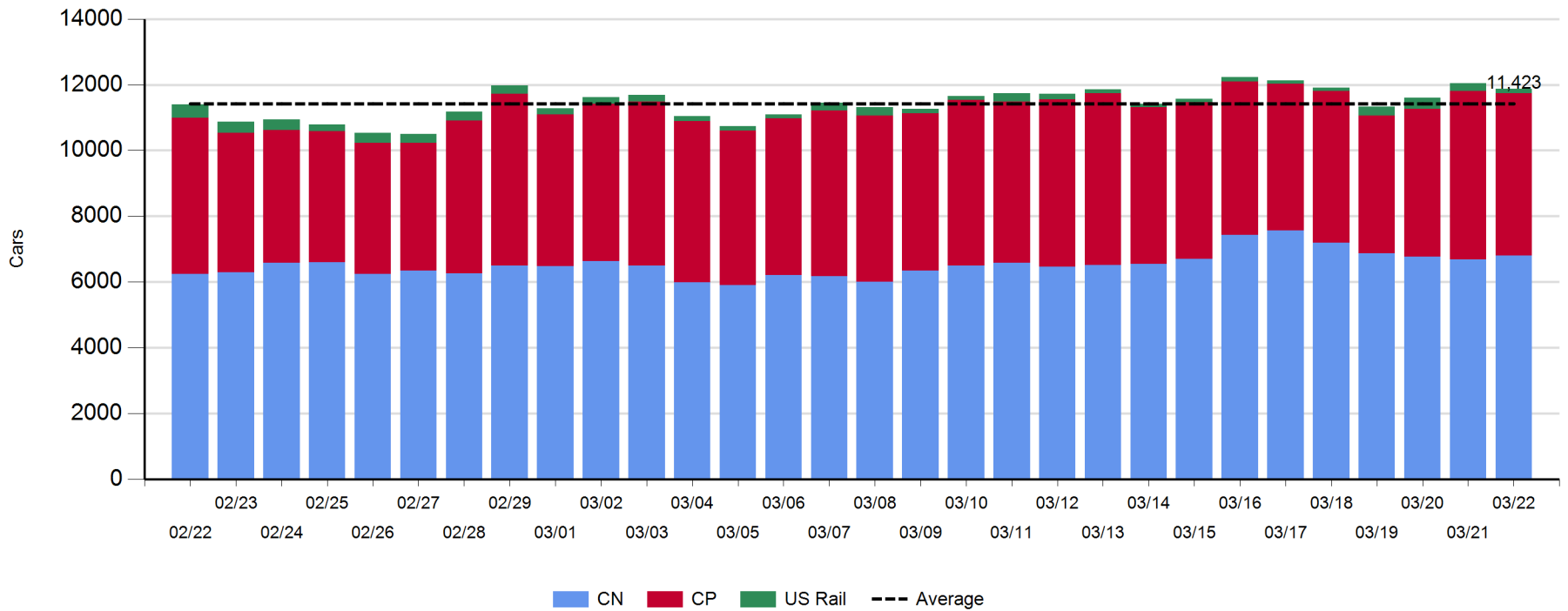
**Daily Loads on Wheels - 3/22/2020**

	E Canada	Prince Rupert	Thunder Bay	USA/MEX	Vancouver	Total
CN	1,247	1,327	283	320	3,616	6,793
CP	599		503	411	3,425	4,938
Short Line	39				28	67
US Rail				81		81
	1,885	1,327	786	812	7,069	11,879

**Change in Loads on Wheels - Prior 24 Hours**

	E Canada	Prince Rupert	Thunder Bay	USA/MEX	Vancouver	Total
CN	168	-193	0	-6	143	112
CP	-63		0	0	-126	-189
Short Line	-68				-6	-74
US Rail				-20		-20
	37	-193	0	-26	11	-171

**Loads on Wheels - Prior 30 Days**

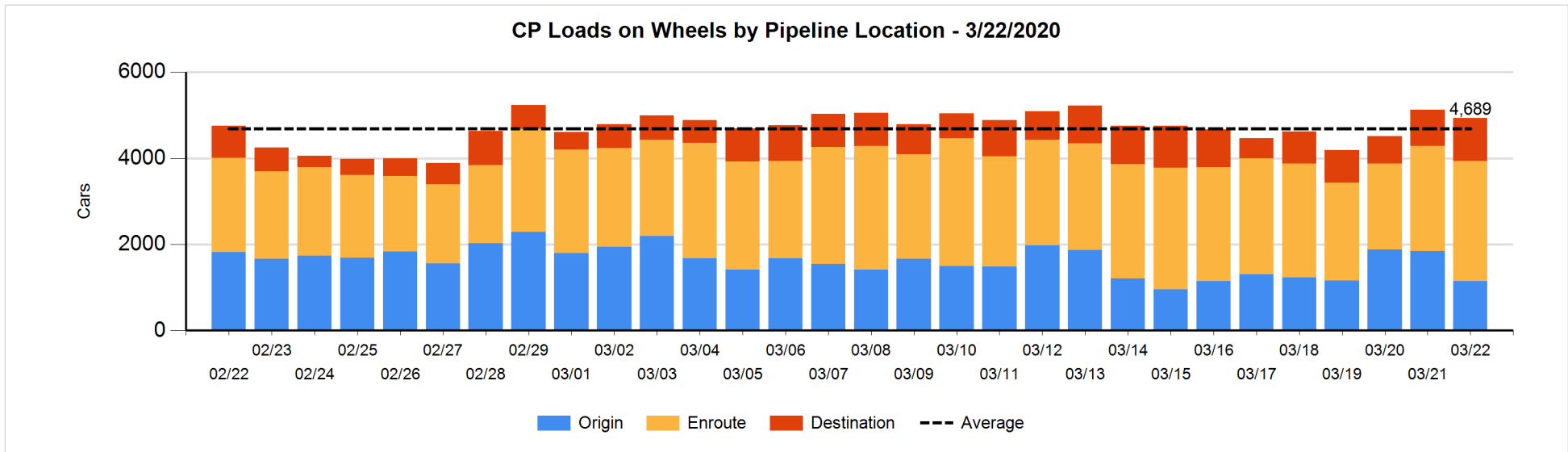
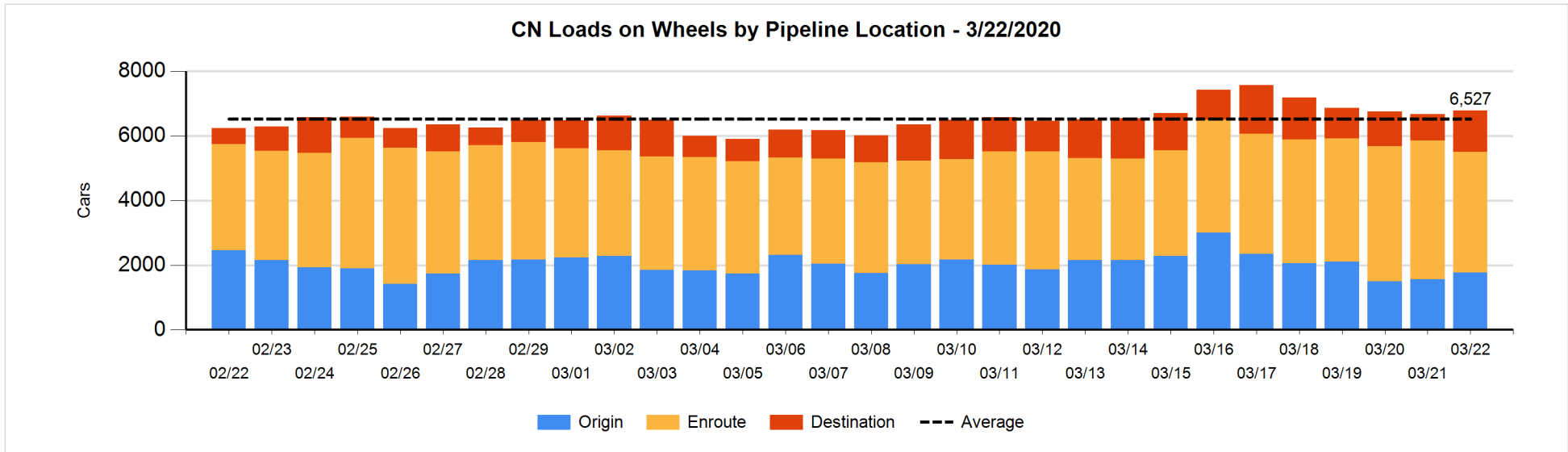


**Daily Loads on Wheels By Pipeline Location - 3/22/2020**

	E Canada	Prince Rupert	Thunder Bay	USA/MEX	Vancouver	Total
CN						
Origin	237	210	211	64	1,049	1,771
Enroute	819	939	1	242	1,724	3,725
Destination	191	178	71	14	843	1,297
	1,247	1,327	283	320	3,616	6,793
CP						
Origin	25		51	57	1,010	1,143
Enroute	573		205	337	1,675	2,790
Destination	1		247	17	740	1,005
	599		503	411	3,425	4,938
US Rail / Short Line						
Origin						
Enroute	31			48		79
Destination	8			33	28	69
	39			81	28	148

**Change in Daily Loads on Wheels By Pipeline Location - Prior 24 Hours**

	E Canada	Prince Rupert	Thunder Bay	USA/MEX	Vancouver	Total
CN						
Origin	187	-102	0	-107	229	207
Enroute	-152	-269	0	102	-250	-569
Destination	133	178	0	-1	164	474
	168	-193	0	-6	143	112
CP						
Origin	-265		-112	-56	-267	-700
Enroute	202		112	56	-25	345
Destination	0		0	0	166	166
	-63		0	0	-126	-189
US Rail / Short Line						
Origin						
Enroute	4			-5		-1
Destination	-72			-15	-6	-93
	-68			-20	-6	-94

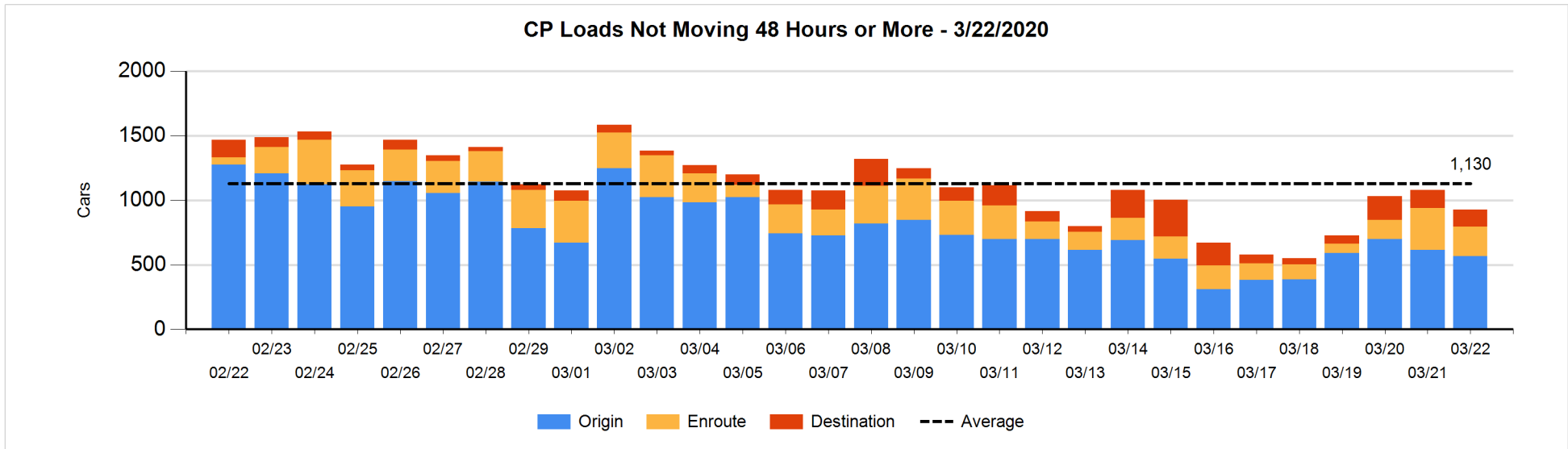
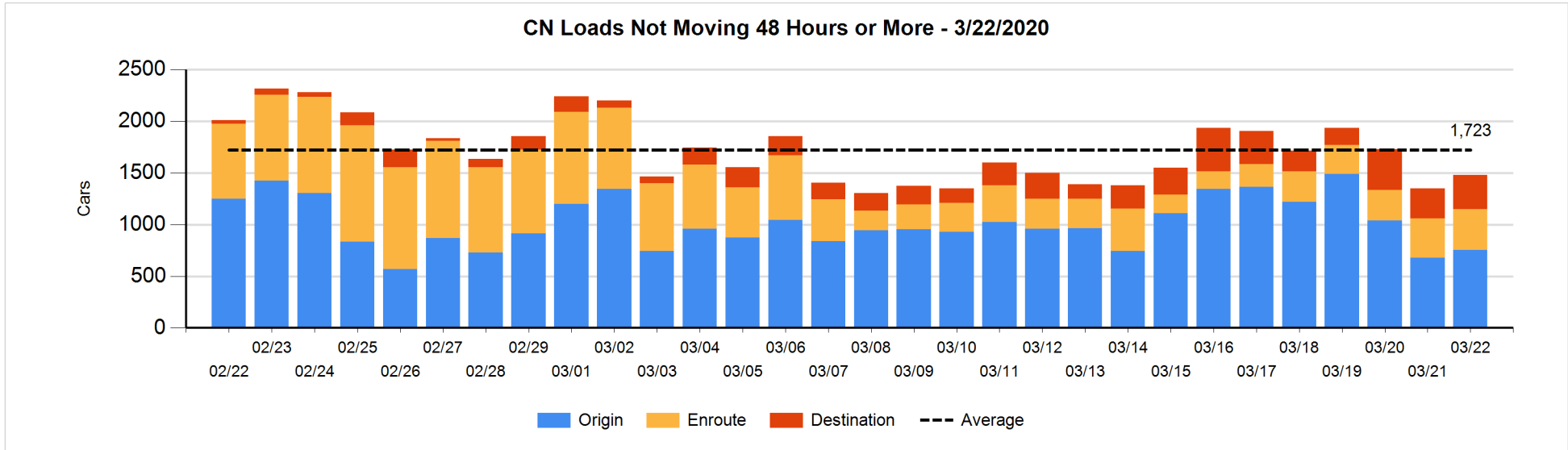


**Loads Not Moving 48 Hours or More - 3/22/2020**

	E Canada	Prince Rupert	Thunder Bay	USA/MEX	Vancouver	Total
CN						
Origin	50	103	110	64	425	752
Enroute	255	28	1	53	60	397
Destination	32		71	14	214	331
	337	131	182	131	699	1480
CP						
Origin	23		51	6	488	568
Enroute	116		3	12	94	225
Destination			8	16	109	133
	139		62	34	691	926
US Rail / Short Line						
Origin						
Enroute	27			30		57
Destination				18	23	41
	27			48	23	98

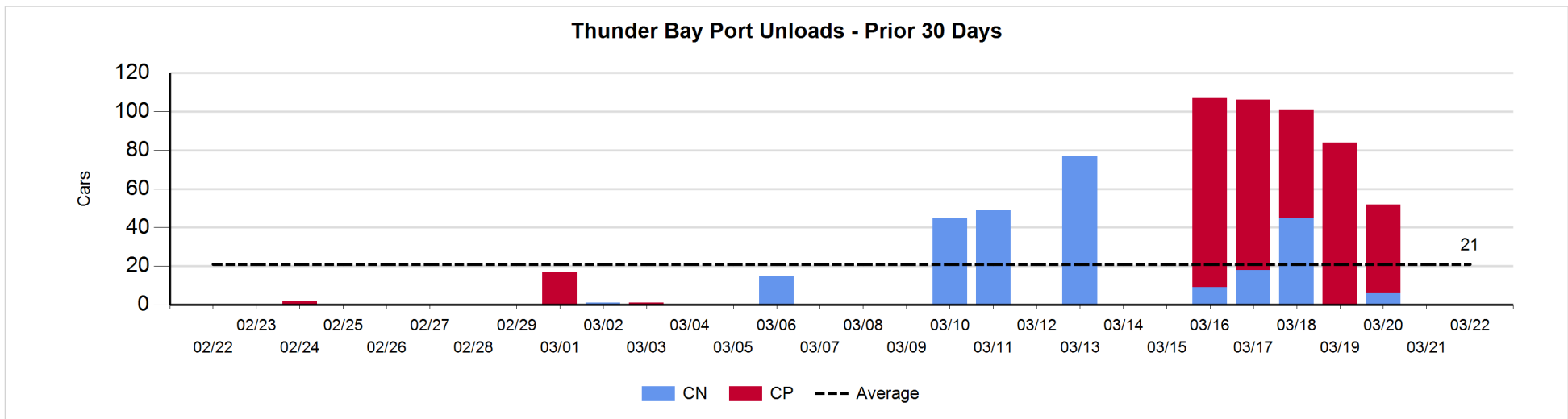
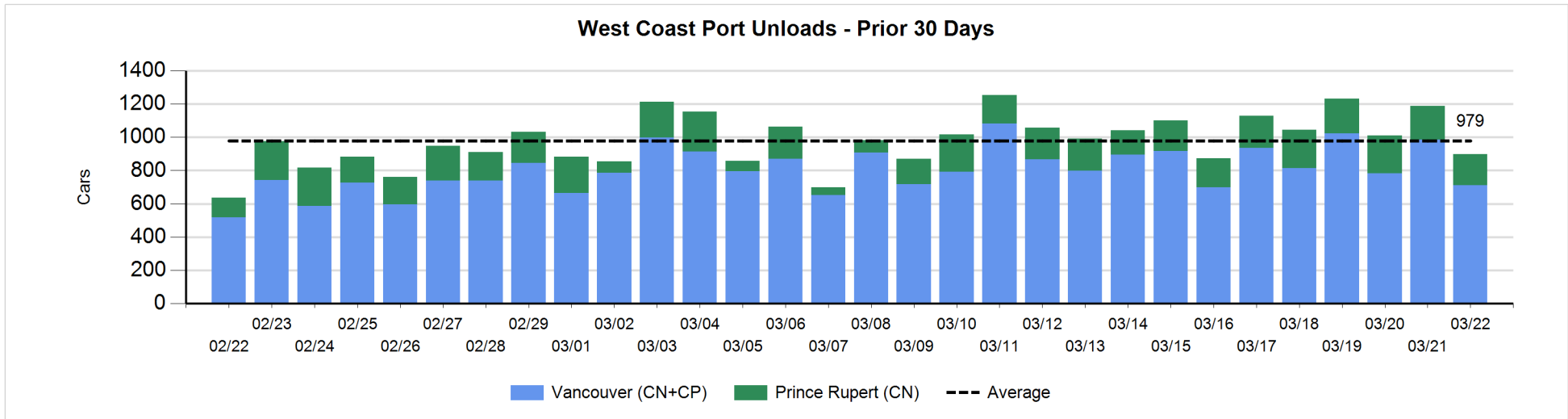
**Change in Loads Not Moving 48 Hours or More - 3/22/2020**

	E Canada	Prince Rupert	Thunder Bay	USA/MEX	Vancouver	Total
CN						
Origin	2	-102	0	8	164	72
Enroute	19	-46	0	36	9	18
Destination	18		0	3	22	43
	39	-148	0	47	195	133
CP						
Origin	-100		51	1	2	-46
Enroute	0		0	7	-108	-101
Destination			3	1	-9	-5
	-100		54	9	-115	-152
US Rail / Short Line						
Origin						
Enroute	0			5		5
Destination				5	0	5
	0			10	0	10



**Port Unloads - 3/22/2020**

	Prince Rupert	Vancouver	West Coast Total	Thunder Bay	Total
CN	188	372	560		560
CP		339	339		339
	188	711	899		899





**Port Terminal Status**

**Vancouver**

Daily Activity for 3/22/2020

	Cars Arrived	Cars Received in Interchange	Cars Delivered in Interchange	Cars Placed for Unloading	Loads on Wheels at Destination As of 3/22/2020
CN	456	134	143	695	843
CP	585	143	134	341	740
SRY				5	28

**Port Unloads**

	03/22	03/21	Week To Date	Last Week
CN	372	604	3,129	2,989
CP	339	381	2,823	3,077
SRY	6	3	35	37

**Age Profile of Loaded Cars Waiting Placement for Unloading**

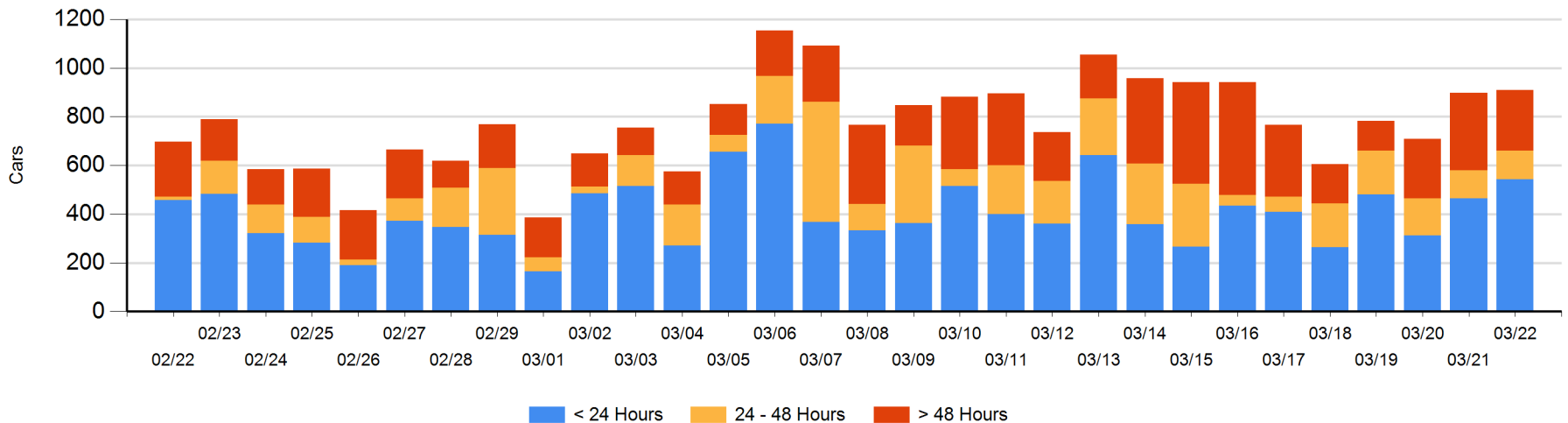
**Today**

	< 24 Hrs	24 - 48 Hrs	> 48-72 Hrs	> 72 Hrs	Total On Hand
CN	190	52		70	312
CP	352	67	24	146	589
SRY				9	9

**Change in Last 24 Hours**

	< 24 Hrs	24-48 Hrs	48 - 72 Hrs	> 72 Hrs
CN	-118	17	-13	-15
CP	195	-13	-64	24
SRY				0

**Loaded Cars on Hand Vancouver Waiting for Placement - Last 30 Days All Railways**



**Port Terminal Status**

**Prince Rupert**

Daily Activity for 3/22/2020

	Cars Arrived	Cars Received in Interchange	Cars Delivered in Interchange	Cars Placed for Unloading	Loads on Wheels at Destination As of 3/22/2020
CN	366			366	178

**Port Unloads**

	03/22	03/21	Week To Date	Last Week
CN	188	203	1,425	1,271

**Age Profile of Loaded Cars Waiting Placement for Unloading**

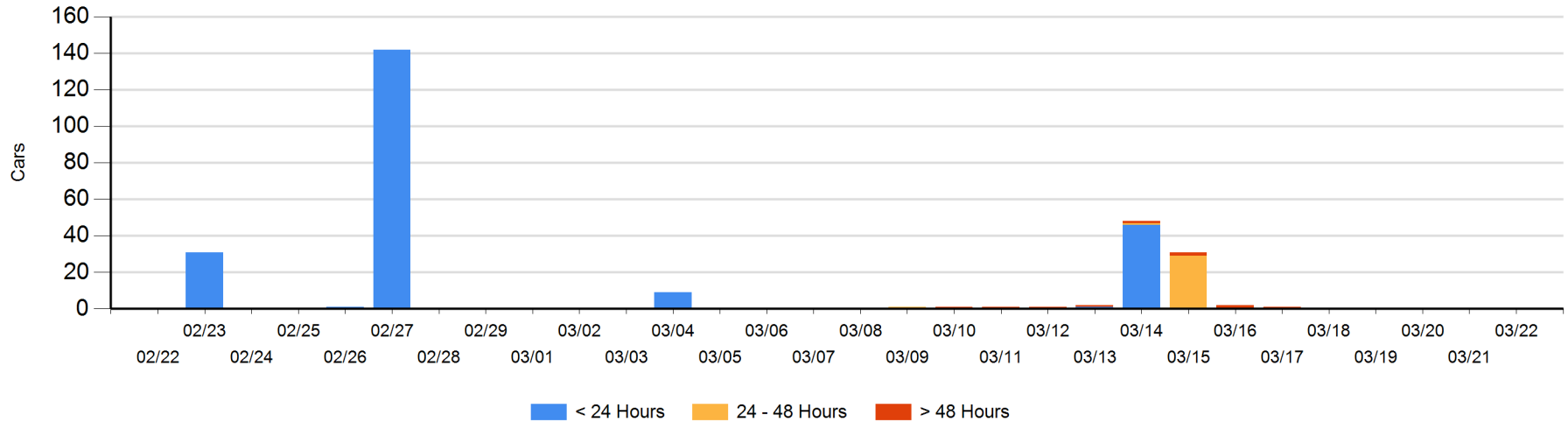
**Today**

	< 24 Hrs	24 - 48 Hrs	> 48-72 Hrs	> 72 Hrs	Total On Hand
CN					0

**Change in Last 24 Hours**

	< 24 Hrs	24-48 Hrs	48 - 72 Hrs	> 72 Hrs
CN				

Loaded Cars on Hand Prince Rupert Waiting for Placement - Last 30 Days All Railways



**Port Terminal Status**

**Thunder Bay**

Daily Activity for 3/22/2020

	Cars Arrived	Cars Received in Interchange	Cars Delivered in Interchange	Cars Placed for Unloading	Loads on Wheels at Destination As of 3/22/2020
CN					71
CP				24	247

**Port Unloads**

	03/22	03/21	Week To Date	Last Week
CN			78	171
CP			372	

**Age Profile of Loaded Cars Waiting Placement for Unloading**

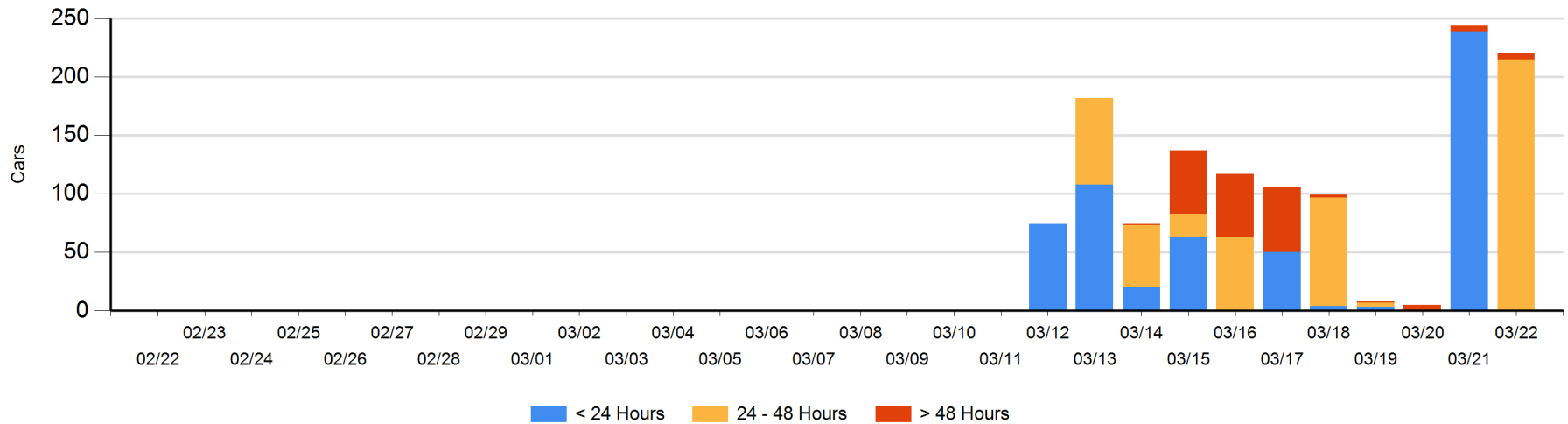
**Today**

	< 24 Hrs	24 - 48 Hrs	> 48-72 Hrs	> 72 Hrs	Total On Hand
CN				3	3
CP		215		2	217

**Change in Last 24 Hours**

	< 24 Hrs	24-48 Hrs	48 - 72 Hrs	> 72 Hrs
CN				-1
CP	-239	215		1

**Loaded Cars on Hand Thunder Bay Waiting for Placement - Last 30 Days All Railways**



## Measurement Definitions

Loads on Wheels	<p>Count of loaded rail cars including all rail cars that have been released loaded at origin and have not been reported by the railway as unloaded at destination.</p> <p>Counts include all rail cars (hopper cars and boxcars) moving within a pipeline.</p>
Loads Not Moving	<p>Loaded rail cars for which the railways have not reported a movement event for 48 hours or more whether the rail car is at origin, enroute or at destination.</p>
Port Unloads	<p>Count of rail cars reported by railways as unloaded at the western port destinations of Vancouver, Prince Rupert and Thunder Bay.</p> <p>Unload counts include all rail cars (hopper cars and boxcars) unloaded by all receivers including major port terminals, transloaders and other receivers.</p>
Cars Arrived	<p>Count of rail cars reported as arrived at the destination railway terminal.</p>
Cars Received in Interchange	<p>Count of rail cars received in interchange by each railway within a destination railway terminal. Interchange activity is tracked for the Vancouver and Thunder Bay pipelines as applicable.</p>
Cars Delivered in Interchange	<p>Count of rail cars delivered in interchange by each railway within a destination railway terminal. Interchange activity is tracked for the Vancouver and Thunder Bay pipelines as applicable.</p>
Cars Placed for Unloading	<p>Count of rail cars reported by the railways as placed loaded at the receiver's facility for unloading.</p>
Loads on Wheels at Destination	<p>Count of rail cars that remain under load within the destination railway terminal including rail cars that have been reported as placed for unloading but not yet reported as unloaded.</p>
Waiting Placement for Unloading	<p>Count of rail cars that have been reported as arrived at the destination railway terminal but not reported as placed for unloading by the railway.</p> <p>For the Ports of Vancouver, Prince Rupert and Thunder Bay the count of rail cars waiting placement for unloading is categorized by age – i.e. the elapsed time from arrival at destination to the current report date.</p>