

**SPEED READ**

- Loads on wheels declined significantly overnight, marking a decline in both CN and CP volumes. On a net basis, volumes decreased due to lower traffic across all corridors other than USA/MEX.
- Network fluidity improved overnight, led by a decline in idle car counts on CP by 21% (-281) offset by a rise in idle car counts on CN by 25% (+276). The total count of cars for 4+ days on both railways decreased 26% (-202) overnight - now at 569 cars.
- Week 13 unloads ended ahead of prior week's performance by 50 unloads, marking improved week over week performance at Vancouver offset by reduced unloads at Thunder Bay and Prince Rupert.

=====

**Loads on Wheels**

- Loads on wheels declined significantly by 10% (-1,242) overnight, due to lower traffic on both CN and CP - combined total at 10,978 and 2% above the trailing 30-day average.
- On a net basis, the decline in loads on wheels reflects lower traffic across all corridors other than USA/MEX.
- CN volumes decreased 8% (-537) overnight, with lower volumes in the Prince Rupert, Vancouver and E. Canada corridors offset by higher traffic in the Thunder Bay and USA/MEX corridors. System wide CN loads on wheels now at 6,079 and 2% above the trailing 30-day average.
- CP volumes decreased significantly by 13% (-701) overnight and have now decreased for the third consecutive day, driven by a decline in volumes across all corridors. CP system wide loads on wheels now at 4,665 and 2% above the trailing 30-day average.
- Vancouver now at 5,354, declined 10% (-578) overnight, now 6% below the trailing 30-day average.
- The Prince Rupert pipeline now at 1,788, declined 19% (-416) overnight, and 3% below the trailing 30-day average.
- Thunder Bay volumes declined 8% (-231) overnight - now at 2,521 and 25% above the trailing 30-day average, with 63% of traffic moving on CP.

**Hopper Car Rationing**

- No hopper cars were rationed by either CN or CP in week 12.

**Loads Not Moving**

- **The count of cars not moving for 48+ hours declined marginally by (-05) overnight, marking lower counts on CP offset by higher counts on CN. Idle car counts presently at 2,396 and 41% above the trailing 30-day average.**
- CN
  - **The count of idle cars for 48+ hours increased 25% (+276) overnight - now at 1,367 cars.**
  - The number of cars idle for 4+ days decreased 20% (-85) overnight - presently at 331 cars.
  - The count of cars not moving for 7+ days gained 69% (+9) overnight - currently at 22 cars.
  - Vancouver represents 36% of all idle cars.
  - In total 71% of all idle cars are dwelling at origin locations.
- CP
  - **CP idle car counts for 48+ hours decreased 21% (-281) overnight - now at 1,029 cars.**
  - The number of cars idle for 4+ days decreased 33% (-117) overnight - now at 238 cars.
  - The number of cars idle for 7+ days gained 10% (+12) overnight - now at 135 cars, the highest seen in the last 30 days.
  - Vancouver accounts for 78% of all idle cars.

- In total 32% of all idle cars are dwelling at origin locations.

### **Port Performance**

- CN and CP reported a total of 1,563 cars unloaded at the three major ports, now 24% above the trailing 30-day average. Week 13 unloads ended ahead of last week's pace by 50 unloads, marking higher unloads at Vancouver offset by reduced unloads at Thunder Bay and Prince Rupert.
- Vancouver
  - 824 unloads reported by CN and CP at the Port of Vancouver; CN - 337 and CP - 487. Week 13 unloads concluded ahead of last week's performance by more than 350 unloads.
  - There are more than 1,700 cars on site at Vancouver with 1,050 cars arriving at the port in the last 24 hours.
  - CN and CP have more than 850 cars in British Columbia en route to Vancouver, with more than 400 cars at Kamloops and west, and 66% of traffic moving on CP.
- Prince Rupert
  - Prince Rupert reported 416 unloads, the highest seen in the last 30 days, ended behind last week's unloads by less than 100 unloads.
  - Loads on wheels remain above 1,000 cars - now at 1,788 cars.
  - There are more than 750 cars west of Jasper en route to Prince Rupert.
  - There are fewer than 100 cars on site at Prince Rupert with zero cars arriving at the port in the last 24 hours.
- Thunder Bay
  - 323 unloads were reported at Thunder Bay yesterday. Week 13 unloads finished behind last week's pace by 250 unloads.
  - There are 950 cars on site at Thunder Bay with around 400 cars arriving at the port in the prior 24 hours.
  - There are more than 700 cars en route to Thunder Bay from Winnipeg and east.

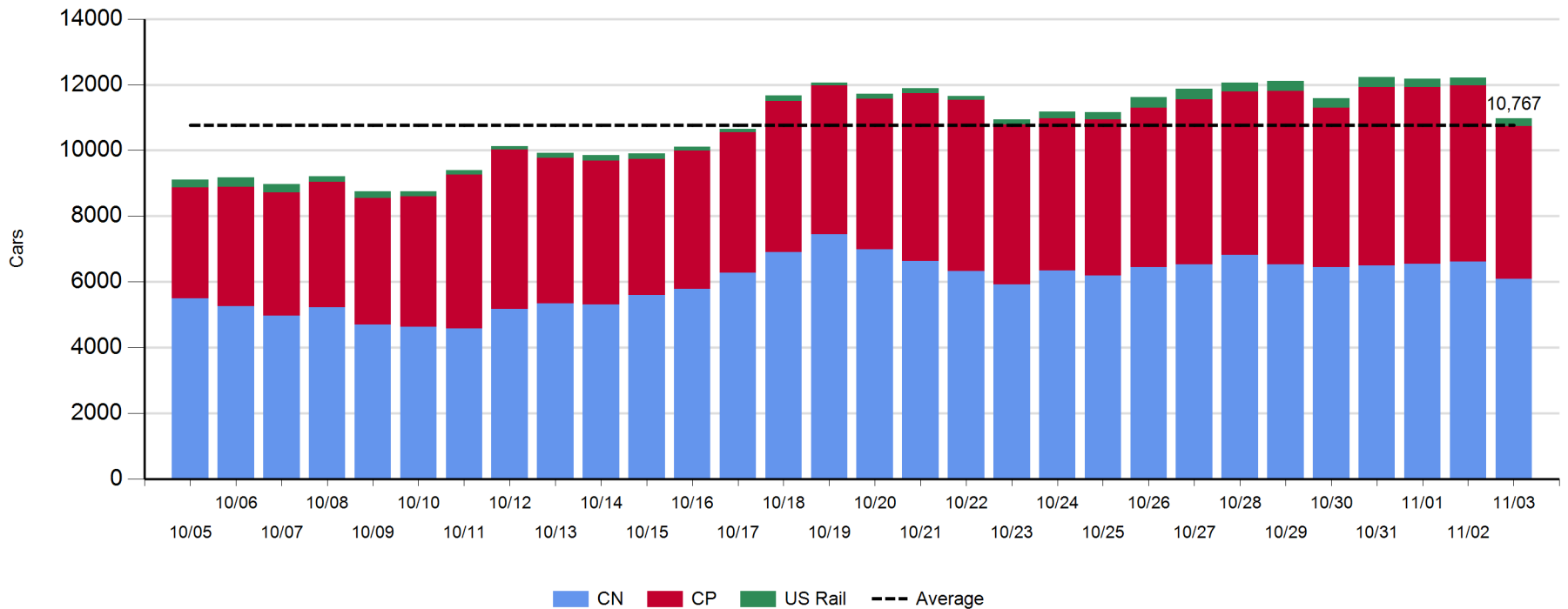
**Daily Loads on Wheels - 11/3/2019**

	E Canada	Prince Rupert	Thunder Bay	USA/MEX	Vancouver	Total
CN	599	1,788	928	291	2,473	6,079
CP	64		1,593	142	2,866	4,665
Short Line	8				15	23
US Rail				211		211
	671	1,788	2,521	644	5,354	10,978

**Change in Loads on Wheels - Prior 24 Hours**

	E Canada	Prince Rupert	Thunder Bay	USA/MEX	Vancouver	Total
CN	-24	-416	53	24	-174	-537
CP	-2		-284	-6	-409	-701
Short Line	0				5	5
US Rail				-9		-9
	-26	-416	-231	9	-578	-1,242

**Loads on Wheels - Prior 30 Days**

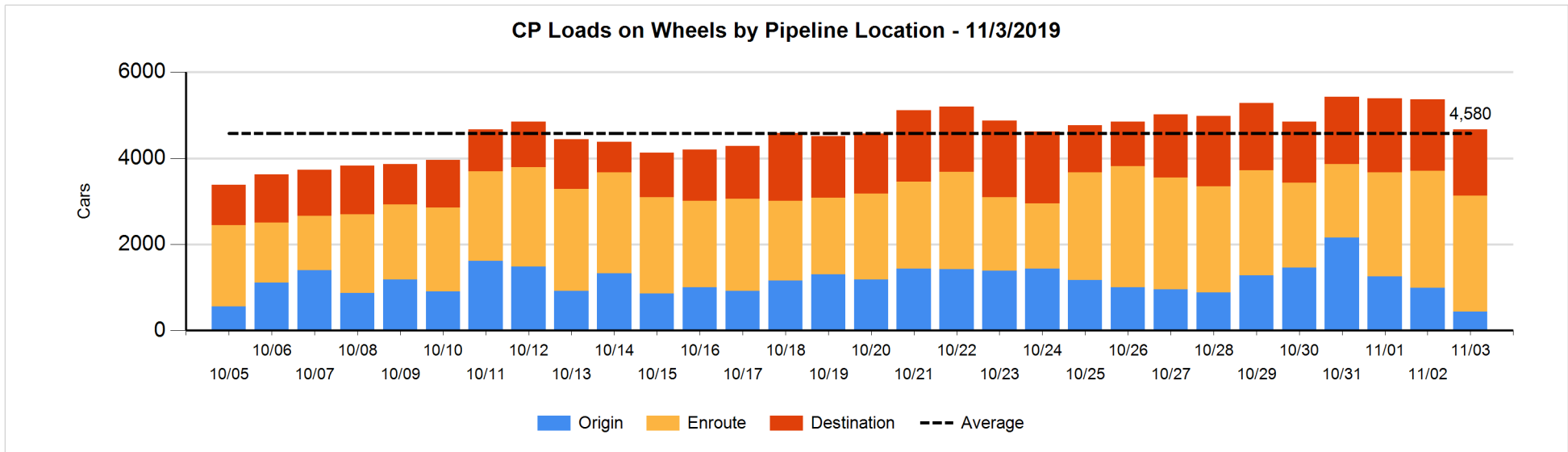
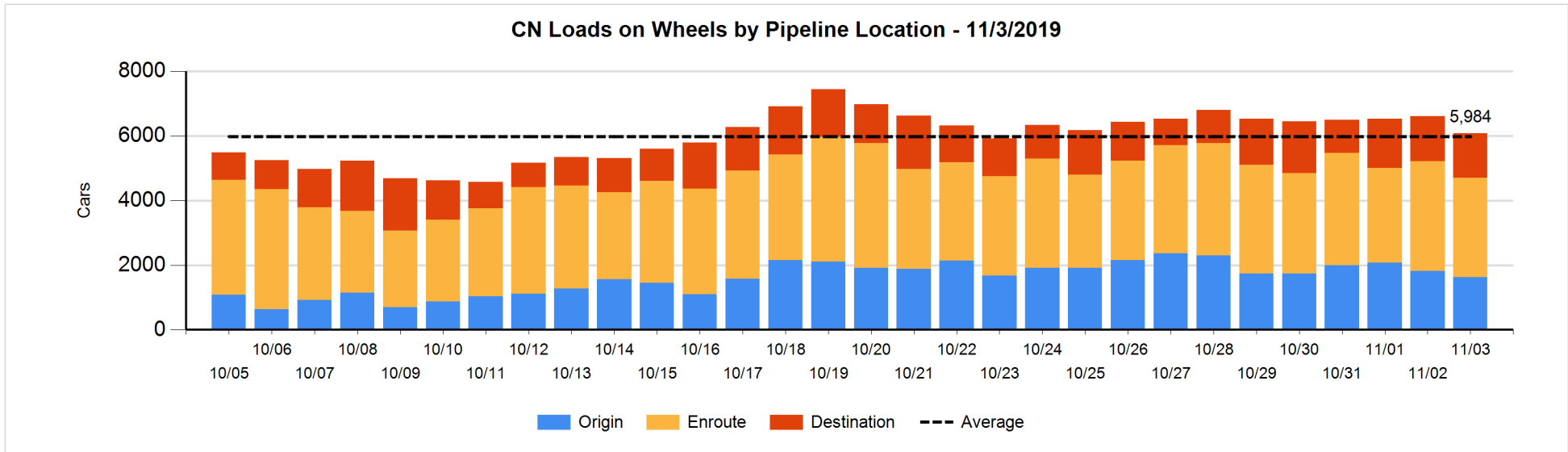


**Daily Loads on Wheels By Pipeline Location - 11/3/2019**

	E Canada	Prince Rupert	Thunder Bay	USA/MEX	Vancouver	Total
CN						
Origin	74	711	199	31	608	1,623
Enroute	413	996	272	242	1,158	3,081
Destination	112	81	457	18	707	1,375
	599	1,788	928	291	2,473	6,079
CP						
Origin	4		8		426	438
Enroute	59		1,083	115	1,439	2,696
Destination	1		502	27	1,001	1,531
	64		1,593	142	2,866	4,665
US Rail / Short Line						
Origin						
Enroute				112		112
Destination	8			99	15	122
	8			211	15	234

**Change in Daily Loads on Wheels By Pipeline Location - Prior 24 Hours**

	E Canada	Prince Rupert	Thunder Bay	USA/MEX	Vancouver	Total
CN						
Origin	-6	0	-11	19	-190	-188
Enroute	1	1	-61	5	-269	-323
Destination	-19	-417	125	0	285	-26
	-24	-416	53	24	-174	-537
CP						
Origin	-27		-194		-334	-555
Enroute	26		-25	-6	-13	-18
Destination	-1		-65	0	-62	-128
	-2		-284	-6	-409	-701
US Rail / Short Line						
Origin						
Enroute				-1		-1
Destination	0			-8	5	-3
	0			-9	5	-4

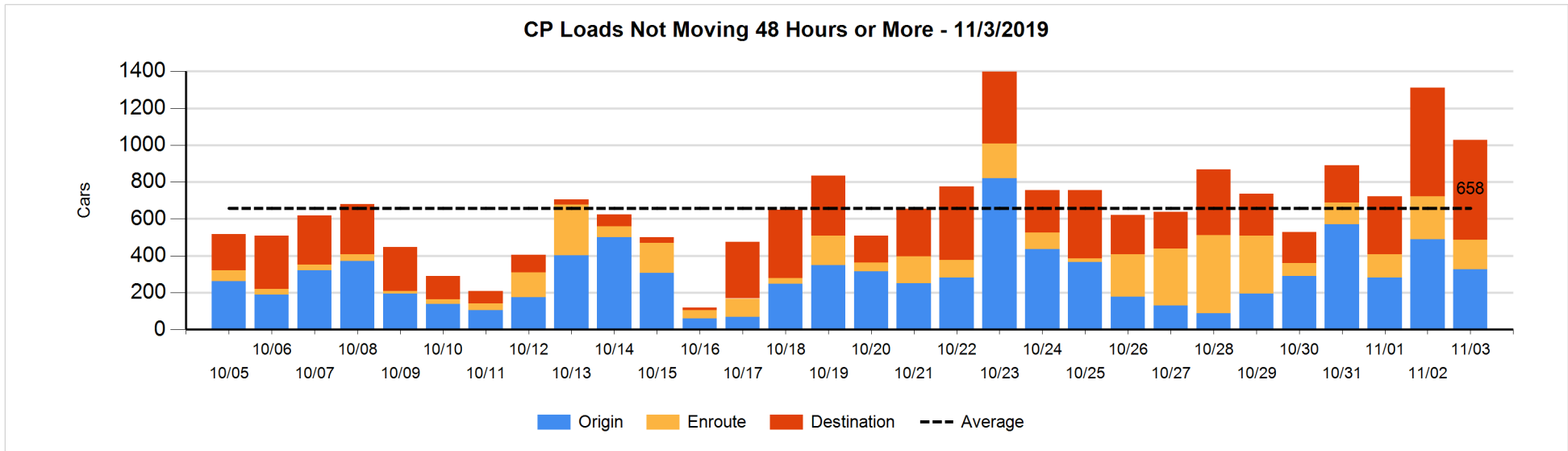
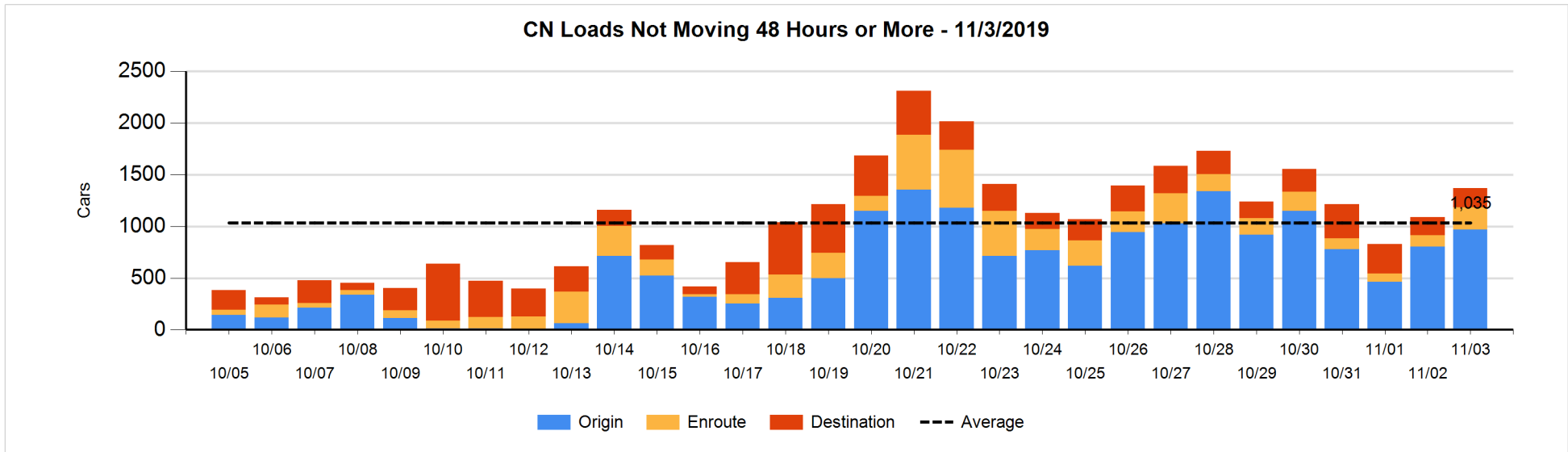


**Loads Not Moving 48 Hours or More - 11/3/2019**

	E Canada	Prince Rupert	Thunder Bay	USA/MEX	Vancouver	Total
CN						
Origin	24	607		6	331	968
Enroute	19	53	2	19	125	218
Destination	61		68	16	36	181
	104	660	70	41	492	1367
CP						
Origin	4		8		315	327
Enroute				10	148	158
Destination			200		344	544
	4		208	10	807	1029
US Rail / Short Line						
Origin						
Enroute				45		45
Destination	8			25	4	37
	8			70	4	82

**Change in Loads Not Moving 48 Hours or More - 11/3/2019**

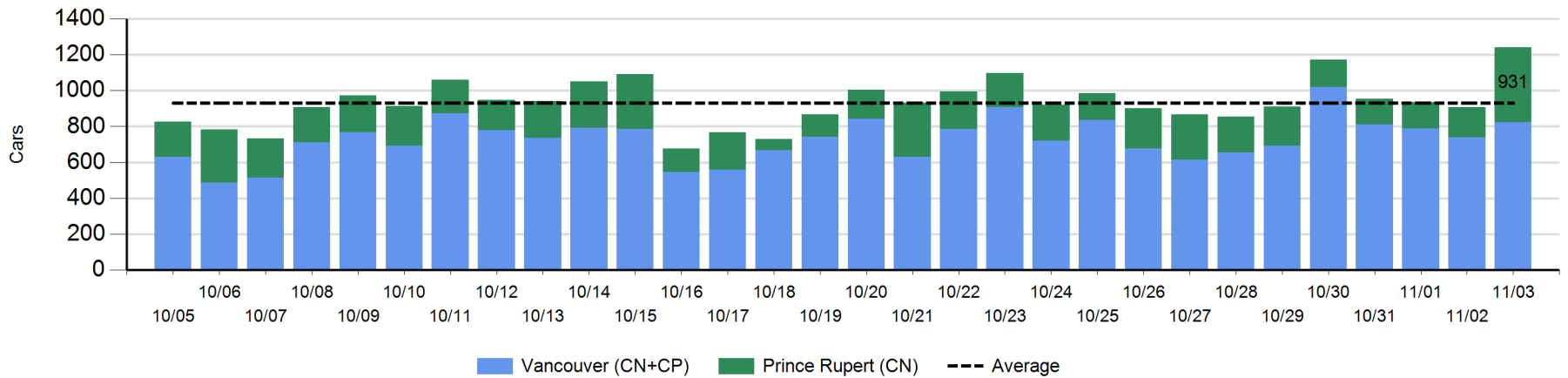
	E Canada	Prince Rupert	Thunder Bay	USA/MEX	Vancouver	Total
CN						
Origin	24	95	-104	-4	156	167
Enroute	4	1	-3	1	102	105
Destination	59	-125	64	2	4	4
	87	-29	-43	-1	262	276
CP						
Origin	-24		-37		-100	-161
Enroute			-55	8	-29	-76
Destination	-2		-6		-36	-44
	-26		-98	8	-165	-281
US Rail / Short Line						
Origin						
Enroute				1		1
Destination	0			6	2	8
	0			7	2	9



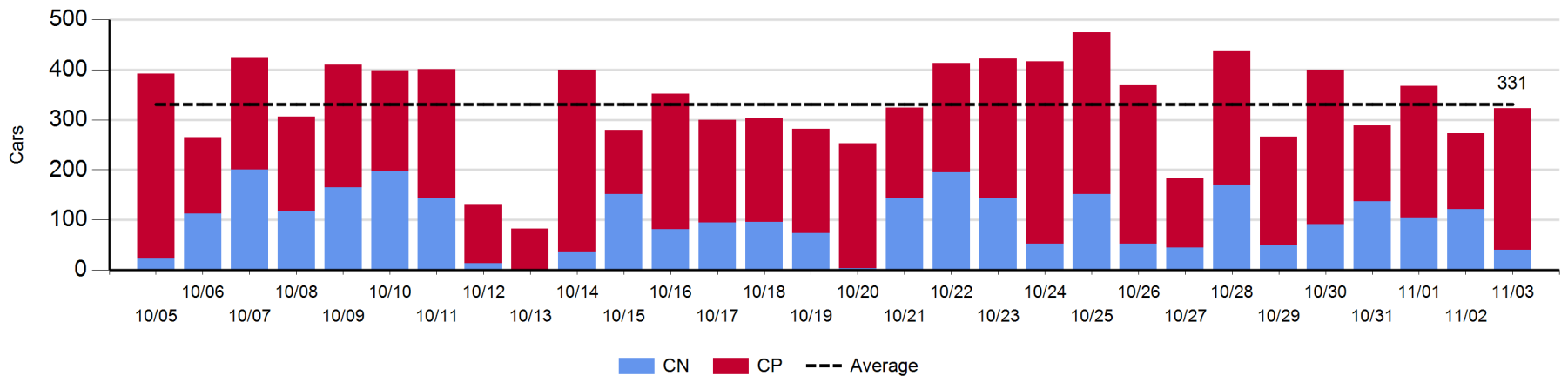
**Port Unloads - 11/3/2019**

	Prince Rupert	Vancouver	West Coast Total	Thunder Bay	Total
CN	416	337	753	40	793
CP		487	487	283	770
	416	824	1,240	323	1,563

**West Coast Port Unloads - Prior 30 Days**



**Thunder Bay Port Unloads - Prior 30 Days**





**Port Terminal Status**

**Vancouver**

Daily Activity for 11/3/2019

	Cars Arrived	Cars Received in Interchange	Cars Delivered in Interchange	Cars Placed for Unloading	Loads on Wheels at Destination As of 11/3/2019
CN	374	233	216	305	707
CP	679	216	238	554	1,001
SRY		5			15

**Port Unloads**

	11/03	11/02	Week To Date	Last Week
CN	337	310	2,291	2,381
CP	487	430	3,244	2,793
SRY		10	79	61

**Age Profile of Loaded Cars Waiting Placement for Unloading**

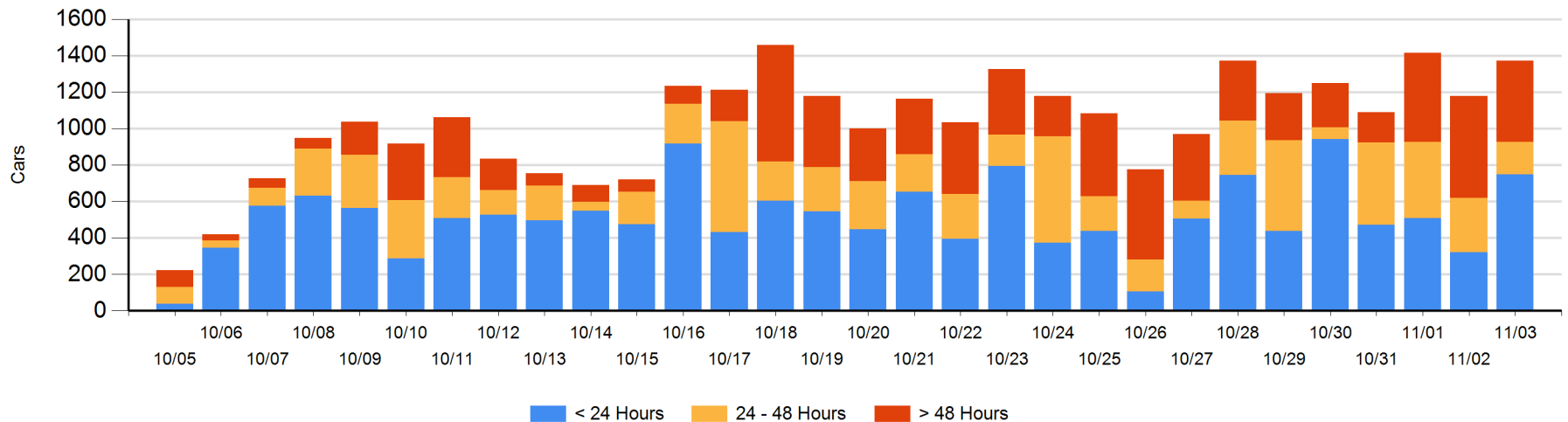
**Today**

	< 24 Hrs	24 - 48 Hrs	> 48-72 Hrs	> 72 Hrs	Total On Hand
CN	274	107	58	55	494
CP	475	70	36	297	878
SRY					0

**Change in Last 24 Hours**

	< 24 Hrs	24-48 Hrs	48 - 72 Hrs	> 72 Hrs
CN	167	-49	58	-8
CP	260	-72	-75	-88
SRY				

**Loaded Cars on Hand Vancouver Waiting for Placement - Last 30 Days All Railways**



**Port Terminal Status**

**Prince Rupert**

Daily Activity for 11/3/2019

Cars Arrived	Cars Received in Interchange	Cars Delivered in Interchange	Cars Placed for Unloading	Loads on Wheels at Destination As of 11/3/2019
				81

**Port Unloads**

	11/03	11/02	Week To Date	Last Week
CN	416	167	1,439	1,523

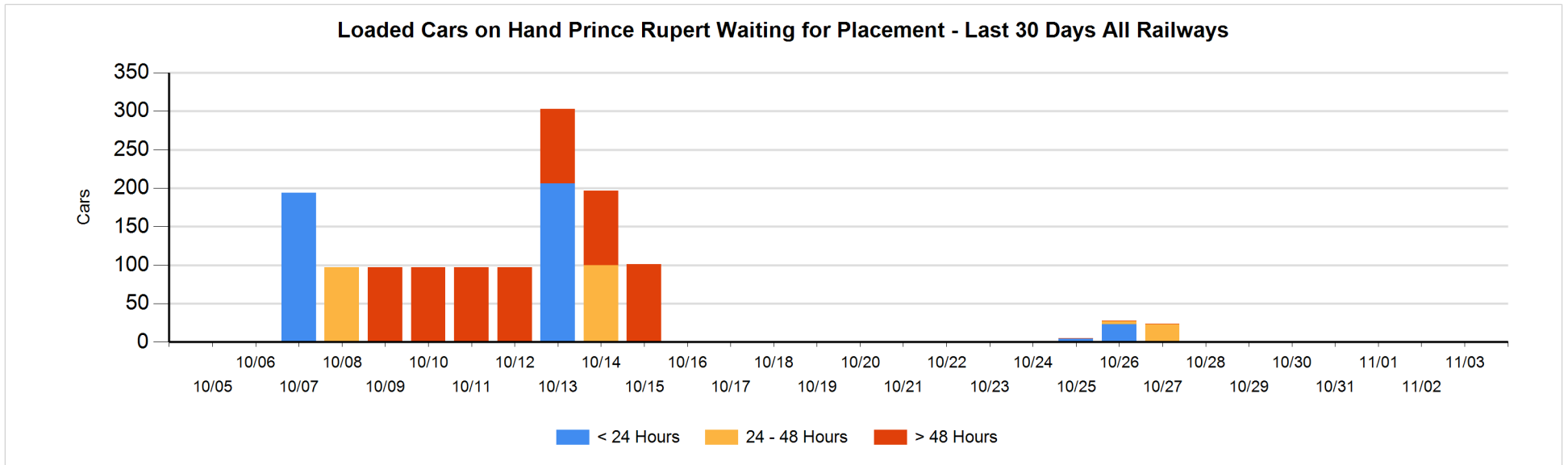
**Age Profile of Loaded Cars Waiting Placement for Unloading**

**Today**

< 24 Hrs	24 - 48 Hrs	> 48-72 Hrs	> 72 Hrs	Total On Hand
				0

**Change in Last 24 Hours**

< 24 Hrs	24-48 Hrs	48 - 72 Hrs	> 72 Hrs



**Port Terminal Status**

**Thunder Bay**

Daily Activity for 11/3/2019

	Cars Arrived	Cars Received in Interchange	Cars Delivered in Interchange	Cars Placed for Unloading	Loads on Wheels at Destination As of 11/3/2019
CN	165			99	457
CP	219			330	502

**Port Unloads**

	11/03	11/02	Week To Date	Last Week
CN	40	122	716	785
CP	283	151	1,639	1,817

**Age Profile of Loaded Cars Waiting Placement for Unloading**

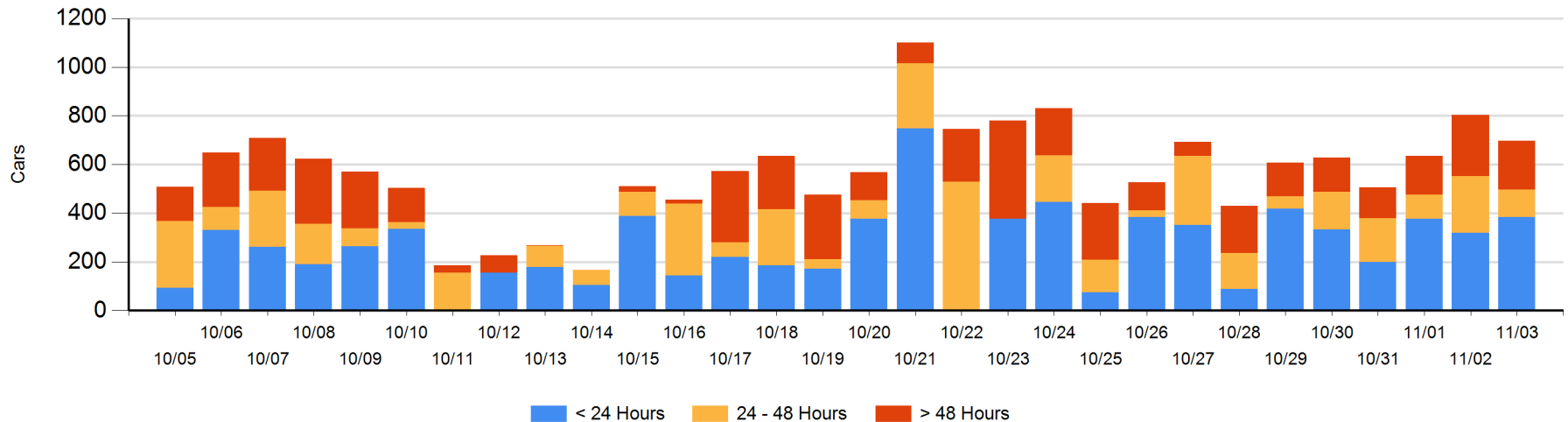
**Today**

	< 24 Hrs	24 - 48 Hrs	> 48-72 Hrs	> 72 Hrs	Total On Hand
CN	165	85			250
CP	219	28	52	148	447

**Change in Last 24 Hours**

	< 24 Hrs	24-48 Hrs	48 - 72 Hrs	> 72 Hrs
CN	80	32		-46
CP	-16	-151	-49	44

**Loaded Cars on Hand Thunder Bay Waiting for Placement - Last 30 Days All Railways**



## Measurement Definitions

Loads on Wheels	<p>Count of loaded rail cars including all rail cars that have been released loaded at origin and have not been reported by the railway as unloaded at destination.</p> <p>Counts include all rail cars (hopper cars and boxcars) moving within a pipeline.</p>
Loads Not Moving	<p>Loaded rail cars for which the railways have not reported a movement event for 48 hours or more whether the rail car is at origin, enroute or at destination.</p>
Port Unloads	<p>Count of rail cars reported by railways as unloaded at the western port destinations of Vancouver, Prince Rupert and Thunder Bay.</p> <p>Unload counts include all rail cars (hopper cars and boxcars) unloaded by all receivers including major port terminals, transloaders and other receivers.</p>
Cars Arrived	<p>Count of rail cars reported as arrived at the destination railway terminal.</p>
Cars Received in Interchange	<p>Count of rail cars received in interchange by each railway within a destination railway terminal. Interchange activity is tracked for the Vancouver and Thunder Bay pipelines as applicable.</p>
Cars Delivered in Interchange	<p>Count of rail cars delivered in interchange by each railway within a destination railway terminal. Interchange activity is tracked for the Vancouver and Thunder Bay pipelines as applicable.</p>
Cars Placed for Unloading	<p>Count of rail cars reported by the railways as placed loaded at the receiver's facility for unloading.</p>
Loads on Wheels at Destination	<p>Count of rail cars that remain under load within the destination railway terminal including rail cars that have been reported as placed for unloading but not yet reported as unloaded.</p>
Waiting Placement for Unloading	<p>Count of rail cars that have been reported as arrived at the destination railway terminal but not reported as placed for unloading by the railway.</p> <p>For the Ports of Vancouver, Prince Rupert and Thunder Bay the count of rail cars waiting placement for unloading is categorized by age – i.e. the elapsed time from arrival at destination to the current report date.</p>