

## SPEED READ

- Loads on wheels increased overnight, marking a rise in both CN and CP volumes. On a net basis, volumes increased due to higher traffic in the Vancouver and E. Canada corridors offset by reduced traffic in the Prince Rupert, Thunder Bay and USA/MEX corridors.
- Network fluidity improved overnight, led by a decline in idle car counts on CP by 23% (-238) offset by a rise in idle car counts on CN by 11% (+144). The total count of cars for 4+ days on both railways increased significantly by 92% (+523) overnight - now at 1,092 cars, the highest seen in the last 30 days.
- One day in Week 14 unloads now ahead of prior week's performance by 100 unloads, marking improved week over week performance at Vancouver offset by reduced unloads at Prince Rupert and Thunder Bay.

---

## Loads on Wheels

- Loads on wheels increased 2% (+262) overnight, due to higher traffic on both CN and CP - combined total at 11,242 and 4% above the trailing 30-day average.
- On a net basis, the rise in loads on wheels reflects higher traffic in the Vancouver and E. Canada corridors offset by reduced traffic in the Prince Rupert, Thunder Bay and USA/MEX corridors.
- CN volumes increased 3% (+183) overnight, with higher volumes in the Vancouver and E. Canada corridors offset by reduced traffic in the Prince Rupert, Thunder Bay and USA/MEX corridors. System wide CN loads on wheels presently at 6,261 and 4% above the trailing 30-day average.
- CP volumes increased 2% (+96) overnight, driven by a rise in traffic in the Vancouver and E. Canada corridors offset by a decline in traffic in the Thunder Bay and USA/MEX corridors. CP system wide loads on wheels presently at 4,764 and 3% above the trailing 30-day average.
- Vancouver now at 5,978, increased significantly by 12% (+622) overnight, now 4% above the trailing 30-day average.
- The Prince Rupert pipeline now at 1,630, fell for the third consecutive day, down 9% (-158) overnight, and 11% below the trailing 30-day average.
- Thunder Bay volumes declined 5% (-118) overnight - currently at 2,403 and 18% above the trailing 30-day average, with 65% of traffic moving on CP.

## Hopper Car Rationing

- No hopper cars were rationed by either CN or CP in week 12.

## Loads Not Moving

- **The count of cars not moving for 48+ hours declined 4% (-94) overnight, reflecting lower counts on CP offset by higher counts on CN. Idle car counts now at 2,304 and 32% above the trailing 30-day average.**
- CN
  - **The count of idle cars for 48+ hours rose for the third consecutive day, up 11% (+144) overnight - now at 1,511 cars with nearly 60% of all idle cars destined to Prince Rupert (882 cars) and 90% of those dwelling at origin.**
  - The number of cars idle for 4+ days increased 104% (+345) overnight - currently at 676 cars.
  - The count of cars not moving for 7+ days increased 536% (+118) overnight - now at 140 cars.
  - Vancouver represents 26% of all idle cars.
  - In total 69% of all idle cars are dwelling at origin locations.
- CP
  - **CP idle car counts for 48+ hours declined 23% (-238) overnight - now at 793 cars.**
  - The number of cars idle for 4+ days increased 75% (+178) overnight - currently at 416 cars.

- The number of cars idle for 7+ days decreased 10% (-13) overnight - now at 122 cars.
- Vancouver accounts for 61% of all idle cars.
- In total 26% of all idle cars are dwelling at origin locations.

### **Port Performance**

- CN and CP reported a total of 1,399 cars unloaded at the three major ports, 10% above the trailing 30-day average. One day in Week 14 unloads now ahead of last week's pace by 100 unloads, marking higher unloads at Vancouver offset by reduced unloads at Prince Rupert and Thunder Bay.
- Vancouver
  - 812 unloads reported by CN and CP at the Port of Vancouver; CN - 378 and CP - 434. One day in Week 14 unloads are tracking ahead of last week's performance by 150 unloads.
  - There are fewer than 1,500 cars on site at Vancouver with more than 550 cars arriving at the port in the last 24 hours.
  - CN and CP have 1,150 cars in British Columbia en route to Vancouver, with more than 800 cars at Kamloops and west, and 52% of traffic moving on CP.
- Prince Rupert
  - Prince Rupert reported 158 unloads, now behind last week's unloads after one day by fewer than 50 unloads.
  - Loads on wheels remain above 1,000 cars - presently at 1,630 cars.
  - There are more than 650 cars west of Jasper en route to Prince Rupert.
  - There are 250 cars on site at Prince Rupert with 300 cars arriving at the port in the last 24 hours.
- Thunder Bay
  - 429 unloads were reported at Thunder Bay yesterday. One day in Week 14 unloads are tracking at par with last week's pace.
  - There are more than 1,250 cars on site at Thunder Bay with 750 cars arriving at the port in the prior 24 hours.
  - There are more than 650 cars en route to Thunder Bay from Winnipeg and east.

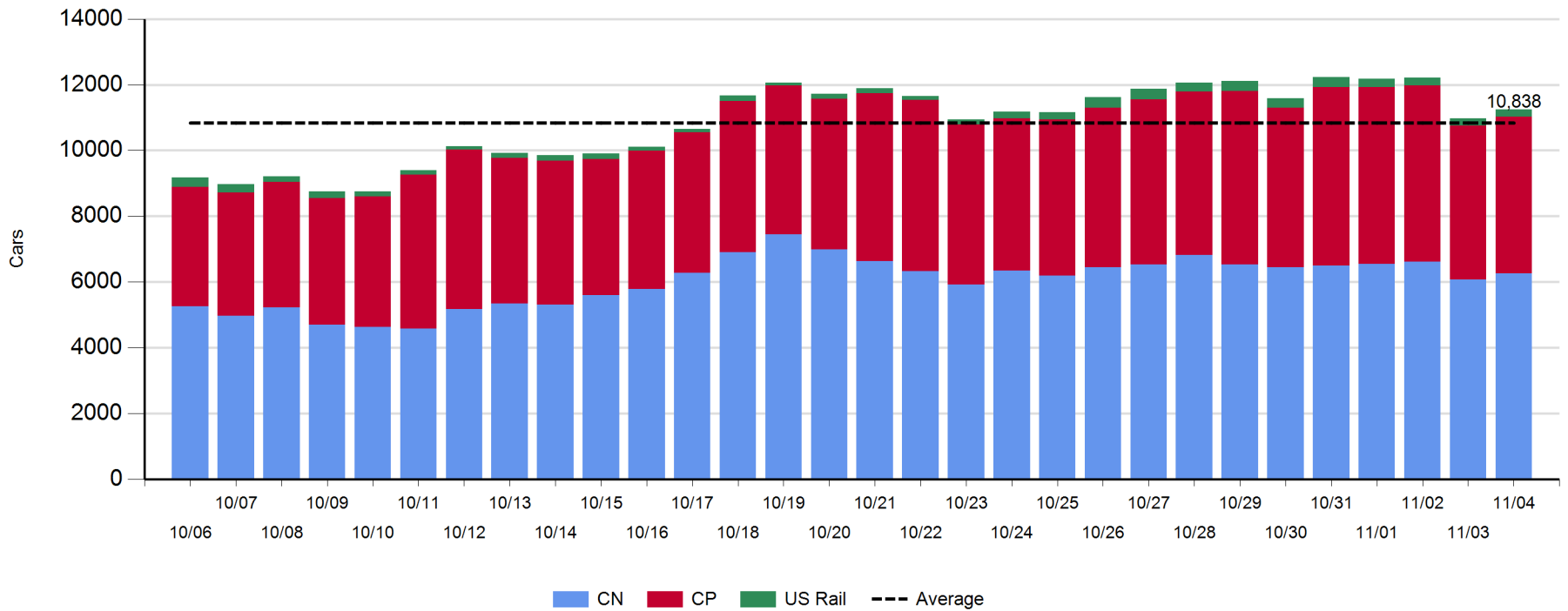
**Daily Loads on Wheels - 11/4/2019**

	E Canada	Prince Rupert	Thunder Bay	USA/MEX	Vancouver	Total
CN	604	1,630	849	246	2,932	6,261
CP	70		1,554	110	3,030	4,764
Short Line	8				16	24
US Rail				193		193
	682	1,630	2,403	549	5,978	11,242

**Change in Loads on Wheels - Prior 24 Hours**

	E Canada	Prince Rupert	Thunder Bay	USA/MEX	Vancouver	Total
CN	6	-158	-79	-45	459	183
CP	5		-39	-32	162	96
Short Line	0				1	1
US Rail				-18		-18
	11	-158	-118	-95	622	262

**Loads on Wheels - Prior 30 Days**

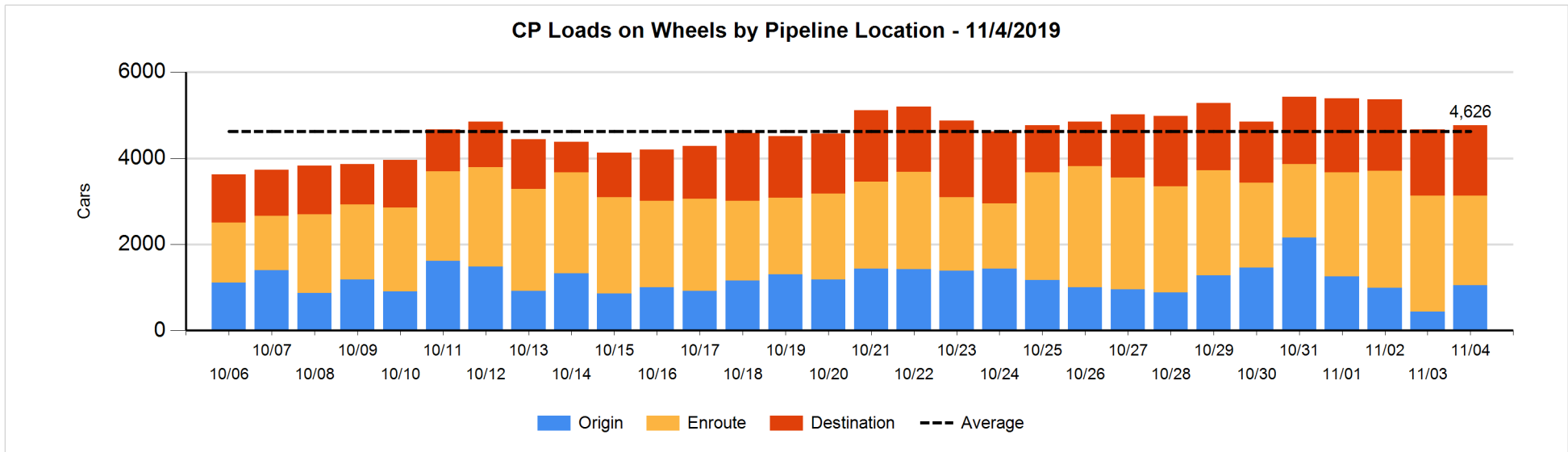
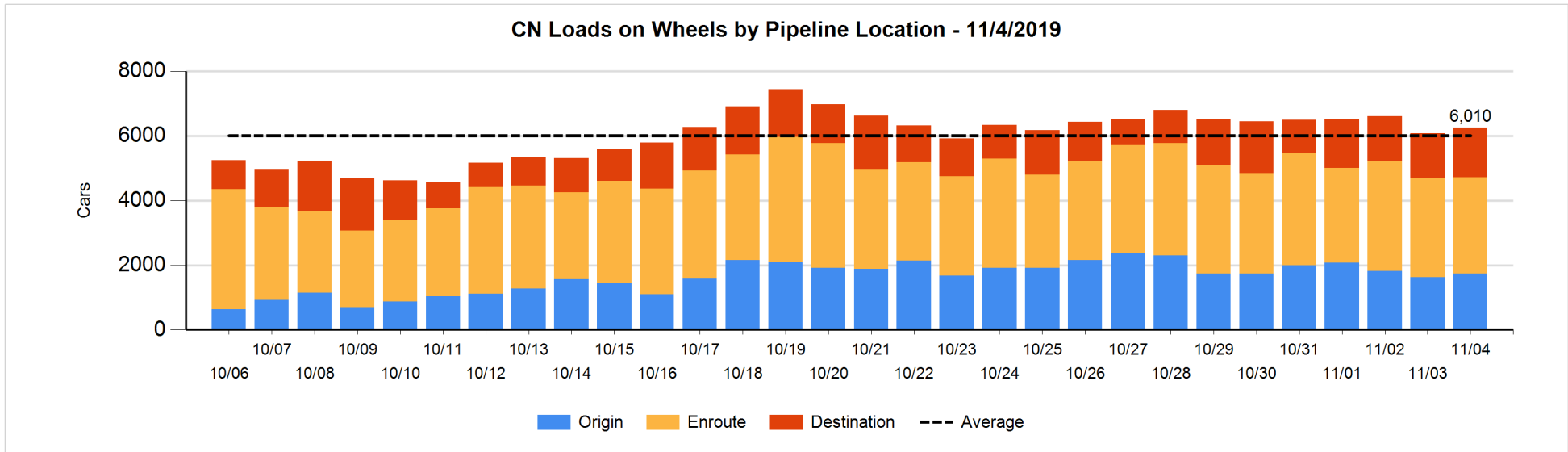


**Daily Loads on Wheels By Pipeline Location - 11/4/2019**

	E Canada	Prince Rupert	Thunder Bay	USA/MEX	Vancouver	Total
CN						
Origin	51	711		10	971	1,743
Enroute	411	667	433	198	1,264	2,973
Destination	142	252	416	38	697	1,545
	604	1,630	849	246	2,932	6,261
CP						
Origin	8		217	2	826	1,053
Enroute	62		476	108	1,431	2,077
Destination			861		773	1,634
	70		1,554	110	3,030	4,764
US Rail / Short Line						
Origin						
Enroute				106		106
Destination	8			87	16	111
	8			193	16	217

**Change in Daily Loads on Wheels By Pipeline Location - Prior 24 Hours**

	E Canada	Prince Rupert	Thunder Bay	USA/MEX	Vancouver	Total
CN						
Origin	-23	0	-199	-21	363	120
Enroute	-2	-329	161	-44	106	-108
Destination	31	171	-41	20	-10	171
	6	-158	-79	-45	459	183
CP						
Origin	4		209	2	399	614
Enroute	3		-607	-7	-8	-619
Destination	-2		359	-27	-229	101
	5		-39	-32	162	96
US Rail / Short Line						
Origin						
Enroute				-6		-6
Destination	0			-12	1	-11
	0			-18	1	-17

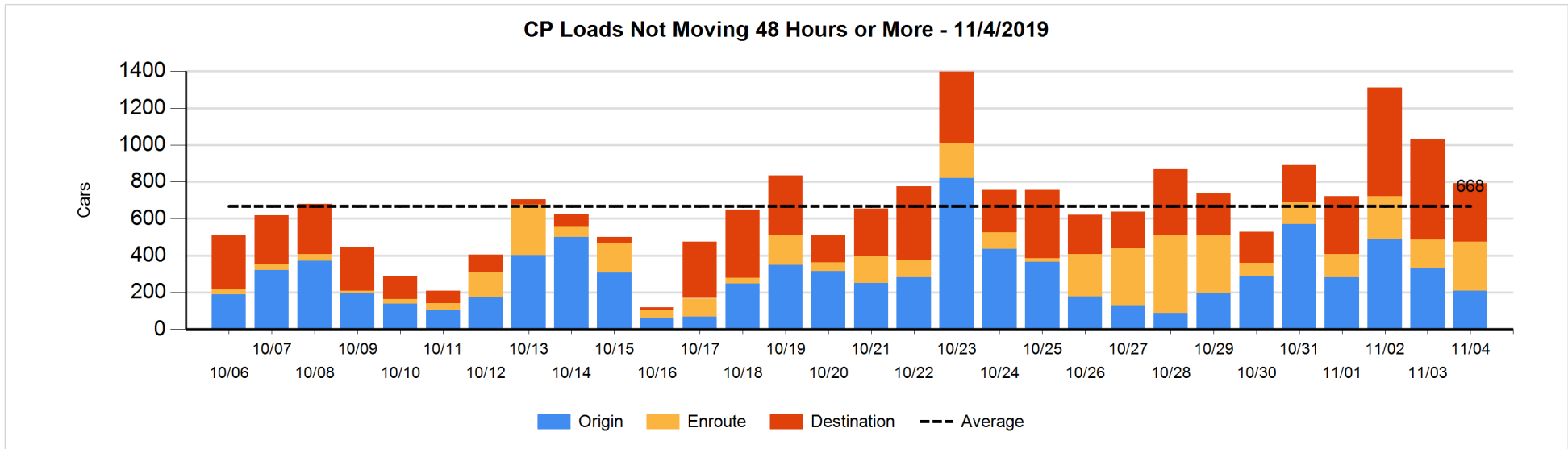
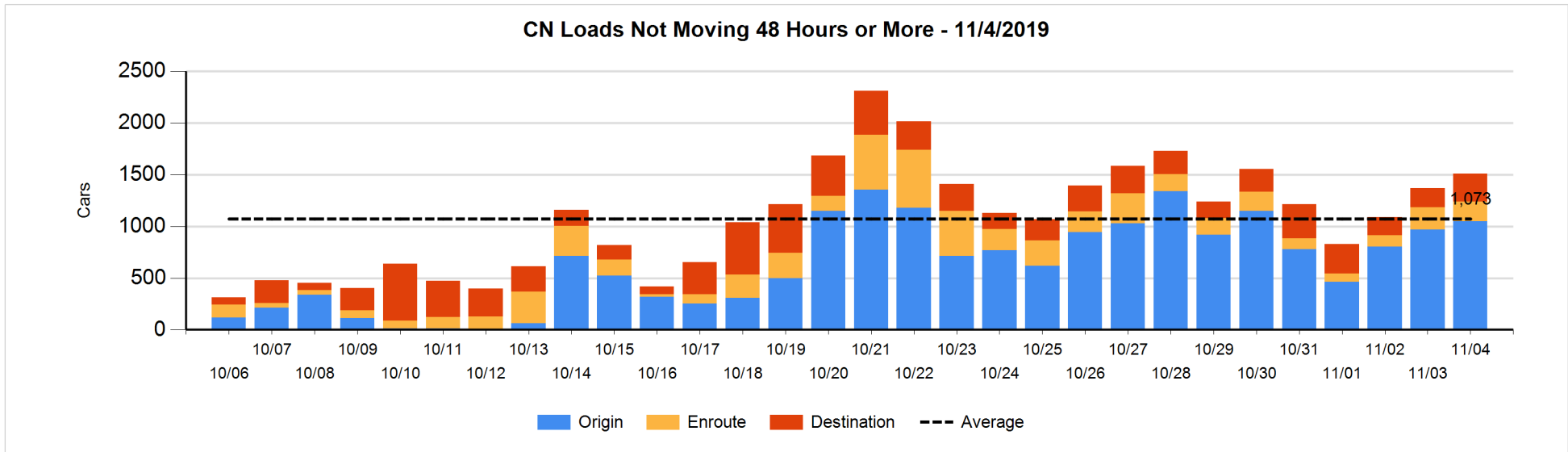


**Loads Not Moving 48 Hours or More - 11/4/2019**

	E Canada	Prince Rupert	Thunder Bay	USA/MEX	Vancouver	Total
<b>CN</b>						
Origin		711		6	330	1047
Enroute	27	124	3	25	13	192
Destination	61	47	106	11	47	272
	88	882	109	42	390	1511
<b>CP</b>						
Origin			8		202	210
Enroute	30		81	3	150	264
Destination			184		135	319
	30		273	3	487	793
<b>US Rail / Short Line</b>						
Origin						
Enroute				15		15
Destination				49	8	57
				64	8	72

**Change in Loads Not Moving 48 Hours or More - 11/4/2019**

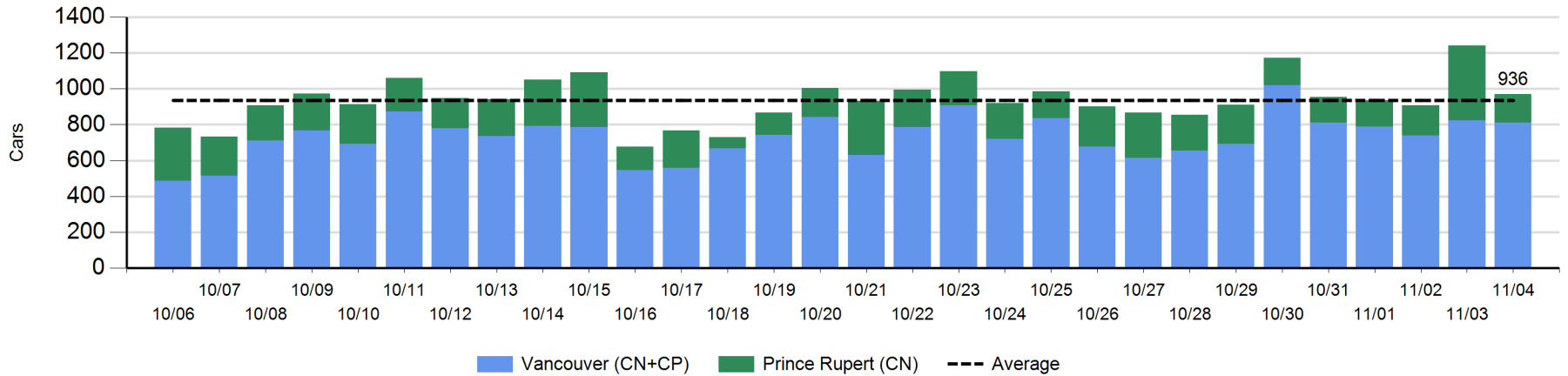
	E Canada	Prince Rupert	Thunder Bay	USA/MEX	Vancouver	Total
<b>CN</b>						
Origin	-24	104		0	-1	79
Enroute	8	71	1	6	-112	-26
Destination	0	47	38	-5	11	91
	-16	222	39	1	-102	144
<b>CP</b>						
Origin	-4		0		-114	-118
Enroute	30		81	-7	2	106
Destination			-16		-210	-226
	26		65	-7	-322	-238
<b>US Rail / Short Line</b>						
Origin						
Enroute				-30		-30
Destination	-8			24	4	20
	-8			-6	4	-10



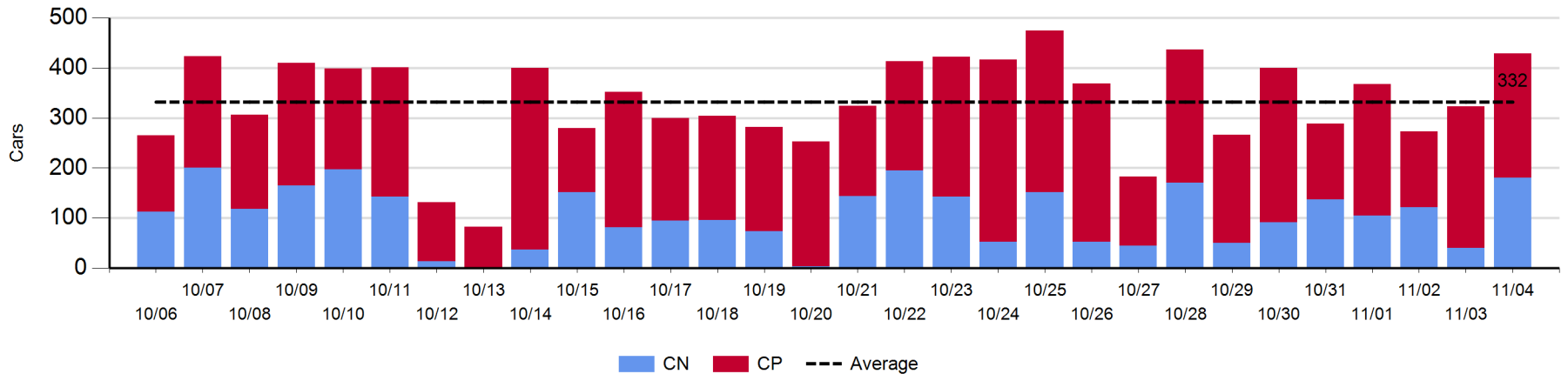
**Port Unloads - 11/4/2019**

	Prince Rupert	Vancouver	West Coast Total	Thunder Bay	Total
CN	158	378	536	181	717
CP		434	434	248	682
	158	812	970	429	1,399

**West Coast Port Unloads - Prior 30 Days**



**Thunder Bay Port Unloads - Prior 30 Days**





**Port Terminal Status**

**Vancouver**

Daily Activity for 11/4/2019

	Cars Arrived	Cars Received in Interchange	Cars Delivered in Interchange	Cars Placed for Unloading	Loads on Wheels at Destination As of 11/4/2019
CN	229	166	26	444	697
CP	344	24	169	315	773
SRY	1	5		8	16

**Port Unloads**

	11/04	11/03	Week To Date	Last Week
CN	378	337	378	2,291
CP	434	487	434	3,244
SRY	8		8	79

**Age Profile of Loaded Cars Waiting Placement for Unloading**

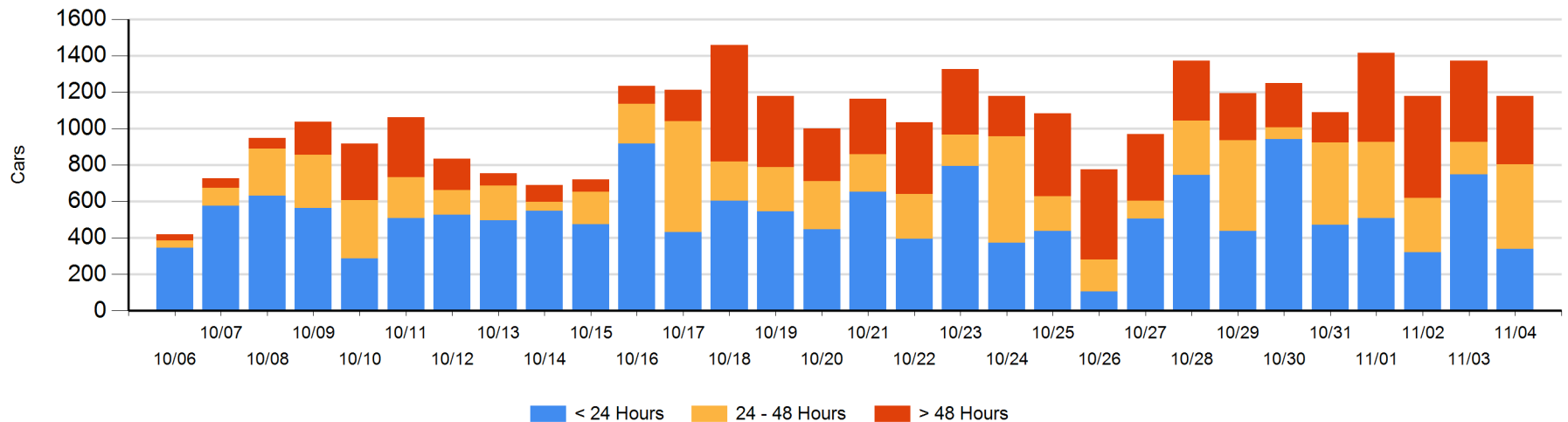
**Today**

	< 24 Hrs	24 - 48 Hrs	> 48-72 Hrs	> 72 Hrs	Total On Hand
CN	227	79	6	69	381
CP	113	384	70	232	799
SRY					0

**Change in Last 24 Hours**

	< 24 Hrs	24-48 Hrs	48 - 72 Hrs	> 72 Hrs
CN	-47	-28	-52	14
CP	-362	314	34	-65
SRY				

**Loaded Cars on Hand Vancouver Waiting for Placement - Last 30 Days All Railways**



**Port Terminal Status**

**Prince Rupert**

Daily Activity for 11/4/2019

	Cars Arrived	Cars Received in Interchange	Cars Delivered in Interchange	Cars Placed for Unloading	Loads on Wheels at Destination As of 11/4/2019
CN	291			291	252

**Port Unloads**

	11/04	11/03	Week To Date	Last Week
CN	158	416	158	1,439

**Age Profile of Loaded Cars Waiting Placement for Unloading**

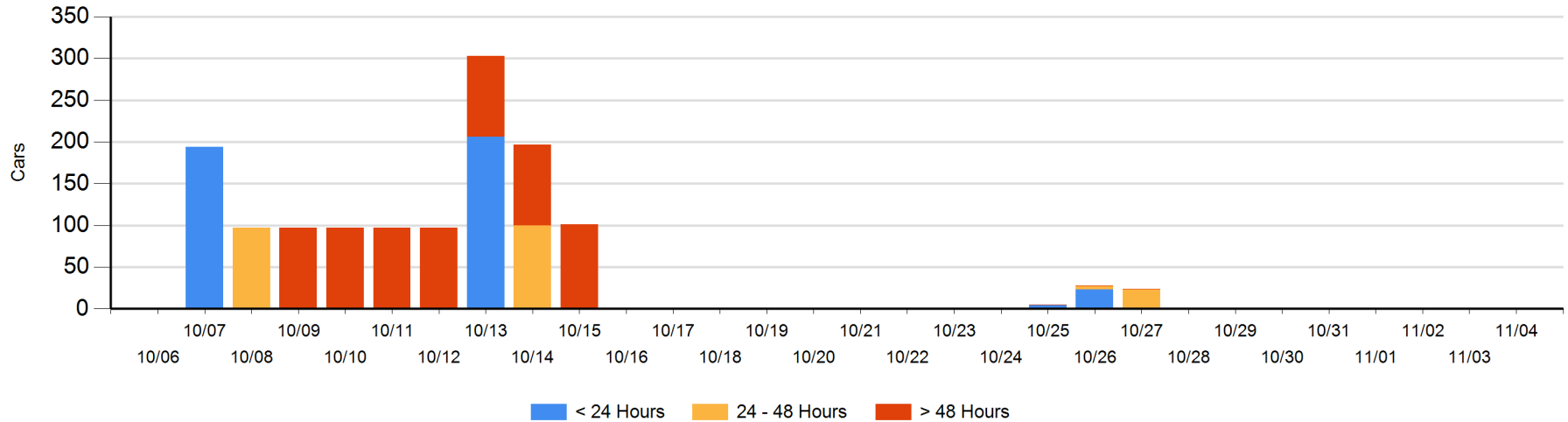
**Today**

	< 24 Hrs	24 - 48 Hrs	> 48-72 Hrs	> 72 Hrs	Total On Hand
CN					0

**Change in Last 24 Hours**

	< 24 Hrs	24-48 Hrs	48 - 72 Hrs	> 72 Hrs
CN				

Loaded Cars on Hand Prince Rupert Waiting for Placement - Last 30 Days All Railways



**Port Terminal Status**

**Thunder Bay**

Daily Activity for 11/4/2019

	Cars Arrived	Cars Received in Interchange	Cars Delivered in Interchange	Cars Placed for Unloading	Loads on Wheels at Destination As of 11/4/2019
CN	140			37	416
CP	607			194	861

**Port Unloads**

	11/04	11/03	Week To Date	Last Week
CN	181	40	181	716
CP	248	283	248	1,639

**Age Profile of Loaded Cars Waiting Placement for Unloading**

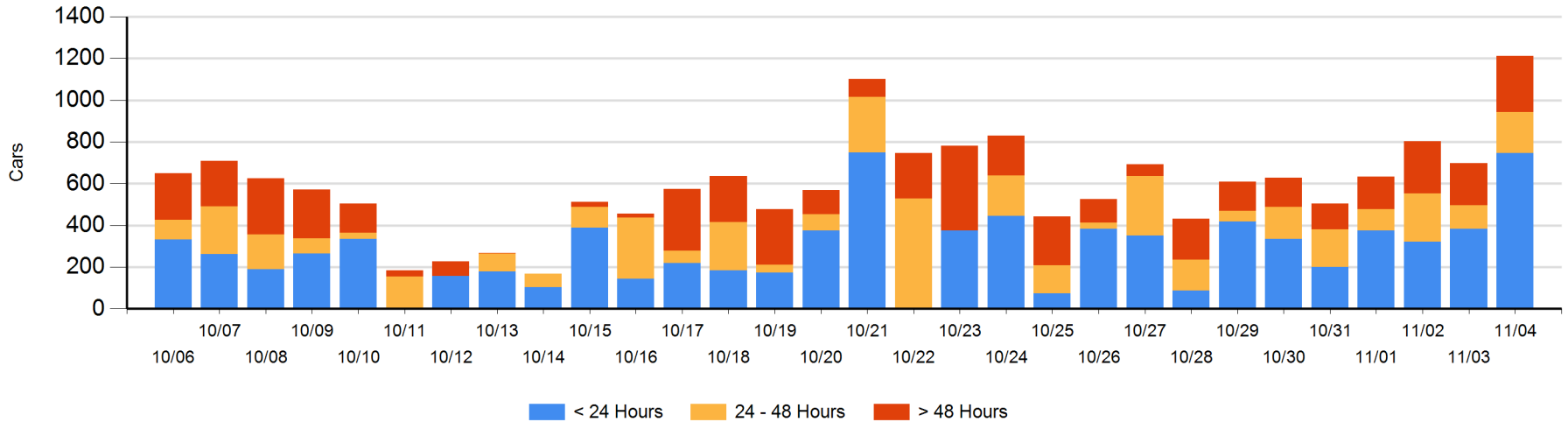
**Today**

	< 24 Hrs	24 - 48 Hrs	> 48-72 Hrs	> 72 Hrs	Total On Hand
CN	140	128	85		353
CP	607	69		183	859

**Change in Last 24 Hours**

	< 24 Hrs	24-48 Hrs	48 - 72 Hrs	> 72 Hrs
CN	-25	43	85	
CP	388	41	-52	35

**Loaded Cars on Hand Thunder Bay Waiting for Placement - Last 30 Days All Railways**



## Measurement Definitions

Loads on Wheels	<p>Count of loaded rail cars including all rail cars that have been released loaded at origin and have not been reported by the railway as unloaded at destination.</p> <p>Counts include all rail cars (hopper cars and boxcars) moving within a pipeline.</p>
Loads Not Moving	<p>Loaded rail cars for which the railways have not reported a movement event for 48 hours or more whether the rail car is at origin, enroute or at destination.</p>
Port Unloads	<p>Count of rail cars reported by railways as unloaded at the western port destinations of Vancouver, Prince Rupert and Thunder Bay.</p> <p>Unload counts include all rail cars (hopper cars and boxcars) unloaded by all receivers including major port terminals, transloaders and other receivers.</p>
Cars Arrived	<p>Count of rail cars reported as arrived at the destination railway terminal.</p>
Cars Received in Interchange	<p>Count of rail cars received in interchange by each railway within a destination railway terminal. Interchange activity is tracked for the Vancouver and Thunder Bay pipelines as applicable.</p>
Cars Delivered in Interchange	<p>Count of rail cars delivered in interchange by each railway within a destination railway terminal. Interchange activity is tracked for the Vancouver and Thunder Bay pipelines as applicable.</p>
Cars Placed for Unloading	<p>Count of rail cars reported by the railways as placed loaded at the receiver's facility for unloading.</p>
Loads on Wheels at Destination	<p>Count of rail cars that remain under load within the destination railway terminal including rail cars that have been reported as placed for unloading but not yet reported as unloaded.</p>
Waiting Placement for Unloading	<p>Count of rail cars that have been reported as arrived at the destination railway terminal but not reported as placed for unloading by the railway.</p> <p>For the Ports of Vancouver, Prince Rupert and Thunder Bay the count of rail cars waiting placement for unloading is categorized by age – i.e. the elapsed time from arrival at destination to the current report date.</p>