

SPEED READ

- Loads on wheels increased slightly overnight, marking higher CP traffic offset by a decline in CN volumes. On a net basis, volumes increased due to higher volumes in the Vancouver and Prince Rupert corridors offset by lower volumes in the Thunder Bay, E. Canada and USA/MEX corridors.
- Network fluidity improved overnight, led by a decline in idle car counts on both CN and CP by 33% (-502) and 27% (-214), respectively. The total count of cars for 4+ days on both railways increased 4% (+40) overnight - currently at 1,132 cars, the highest seen in the last 30 days.
- Two days in Week 14 unloads now ahead of prior week's performance by more than 550 unloads, marking improved week over week performance at Vancouver and Thunder Bay offset by lower unloads at Prince Rupert.

Loads on Wheels

- Loads on wheels increased slightly by 1% (+161) overnight, due to higher volumes on CP offset by reduced volumes on CN - combined total at 11,405 and 5% above the trailing 30-day average.
- On a net basis, the increase in loads on wheels indicates higher volumes in the Vancouver and Prince Rupert corridors offset by lower volumes in the Thunder Bay, E. Canada and USA/MEX corridors.
- CN volumes fell 7% (-428) overnight, with lower volumes across all corridors other than Prince Rupert. System wide CN loads on wheels currently at 5,833 and 3% below the trailing 30-day average.
- CP volumes increased significantly by 13% (+608) overnight, driven by a rise in volumes across all corridors other than Thunder Bay. CP system wide loads on wheels currently at 5,374 and 15% above the trailing 30-day average.
- Vancouver currently at 6,412, increased 7% (+432) overnight, now 10% above the trailing 30-day average.
- The Prince Rupert pipeline currently at 1,700, increased 4% (+70) overnight, and 7% below the trailing 30-day average.
- Thunder Bay volumes declined 12% (-281) overnight and have now decreased for the third consecutive day - currently at 2,122 and 4% above the trailing 30-day average, with 66% of traffic moving on CP.

Hopper Car Rationing

- No hopper cars were rationed by either CN or CP in week 12.

Loads Not Moving

- **The count of cars not moving for 48+ hours fell 31% (-716) overnight and have now decreased for the third consecutive day, reflecting lower counts on both CN and CP. Idle car counts presently at 1,589 and 10% below the trailing 30-day average.**
- CN
 - **The count of idle cars for 48+ hours declined 33% (-502) overnight - currently at 1,009 cars.**
 - The number of cars idle for 4+ days increased 16% (+110) overnight - currently at 786 cars.
 - The count of cars not moving for 7+ days increased for the third consecutive day, up 32% (+45) overnight - presently at 185 cars.
 - Vancouver represents 32% of all idle cars.
 - In total 64% of all idle cars are dwelling at origin locations.
- CP
 - **CP idle car counts for 48+ hours declined 27% (-214) overnight and have now decreased for the third consecutive day - presently at 580 cars.**
 - The number of cars idle for 4+ days declined 17% (-71) overnight - currently at 346 cars.

- The number of cars idle for 7+ days declined 17% (-21) overnight - presently at 101 cars.
- Vancouver accounts for 69% of all idle cars.
- In total 36% of all idle cars are dwelling at origin locations.

Port Performance

- CN and CP reported a total of 1,652 cars unloaded at the three major ports, the highest seen in the last 30 days, 28% above the trailing 30-day average. Two days in Week 14 unloads now ahead of last week's pace by more than 550 unloads, marking higher unloads at Vancouver and Thunder Bay offset by lower unloads at Prince Rupert.
- Vancouver
 - 919 unloads reported by CN and CP at the Port of Vancouver; CN - 428 and CP - 491. Two days in Week 14 unloads are tracking ahead of last week's performance by more than 350 unloads.
 - There are 1,400 cars on site at Vancouver with more than 800 cars arriving at the port in the last 24 hours.
 - CN and CP have nearly 1,150 cars in British Columbia en route to Vancouver, with less than 450 cars at Kamloops and west, and 67% of traffic moving on CP.
- Prince Rupert
 - Prince Rupert reported 233 unloads, now behind last week's unloads after two days by less than 50 unloads.
 - Loads on wheels remain above 1,000 cars - currently at 1,700 cars.
 - There are 350 cars west of Jasper en route to Prince Rupert.
 - There are more than 300 cars on site at Prince Rupert with 350 cars arriving at the port in the last 24 hours.
- Thunder Bay
 - 500 unloads, the highest seen in the last 30 days, were reported at Thunder Bay yesterday. Two days in Week 14 unloads are tracking ahead of last week's pace by more than 200 unloads.
 - There are more than 1,100 cars on site at Thunder Bay with 350 cars arriving at the port in the prior 24 hours.
 - There are more than 400 cars en route to Thunder Bay from Winnipeg and east.

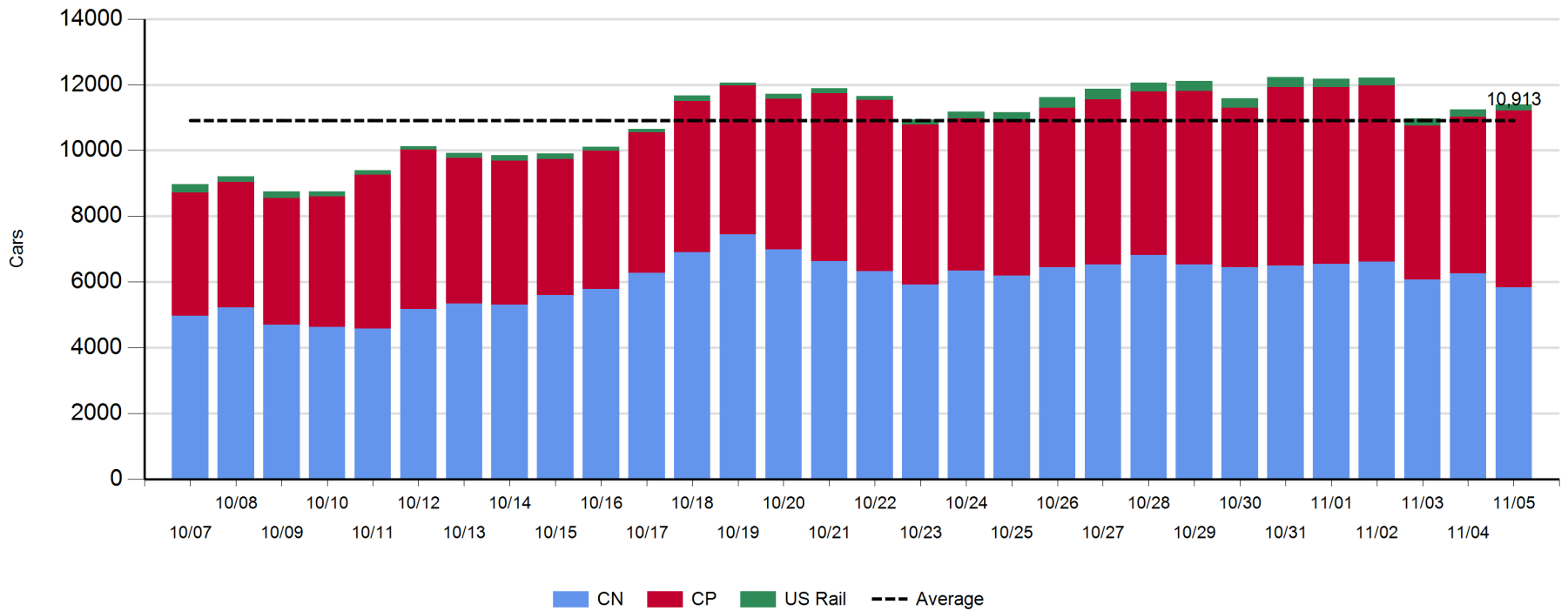
Daily Loads on Wheels - 11/5/2019

	E Canada	Prince Rupert	Thunder Bay	USA/MEX	Vancouver	Total
CN	551	1,700	730	211	2,641	5,833
CP	72		1,392	156	3,754	5,374
Short Line					17	17
US Rail				181		181
	623	1,700	2,122	548	6,412	11,405

Change in Loads on Wheels - Prior 24 Hours

	E Canada	Prince Rupert	Thunder Bay	USA/MEX	Vancouver	Total
CN	-53	70	-119	-35	-291	-428
CP	2		-162	46	722	608
Short Line	-8				1	-7
US Rail				-12		-12
	-59	70	-281	-1	432	161

Loads on Wheels - Prior 30 Days

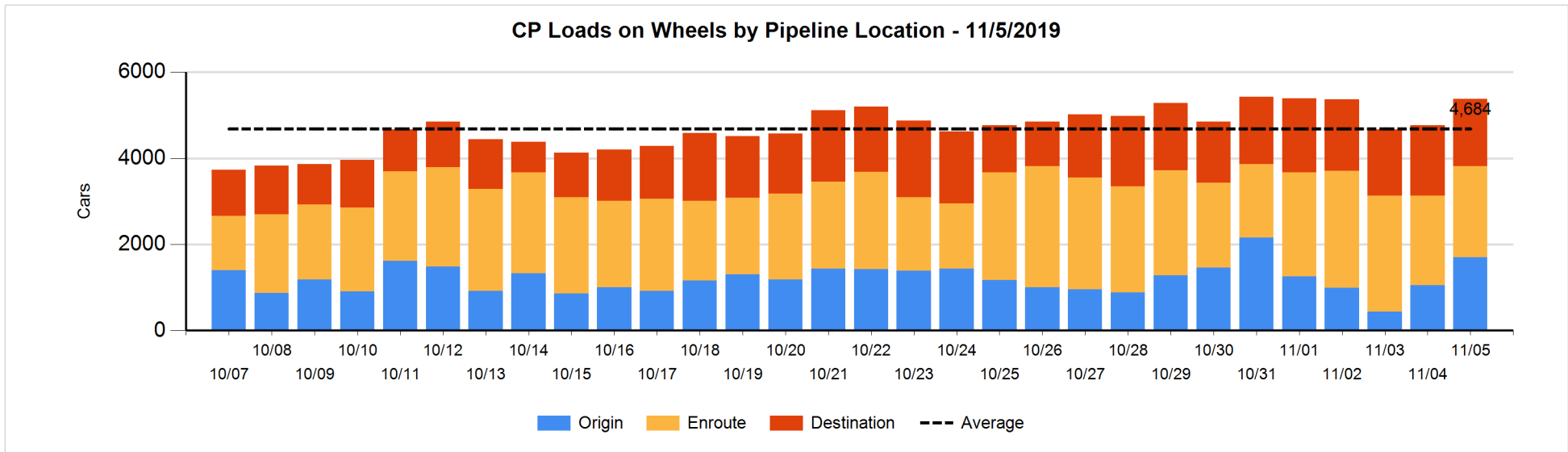
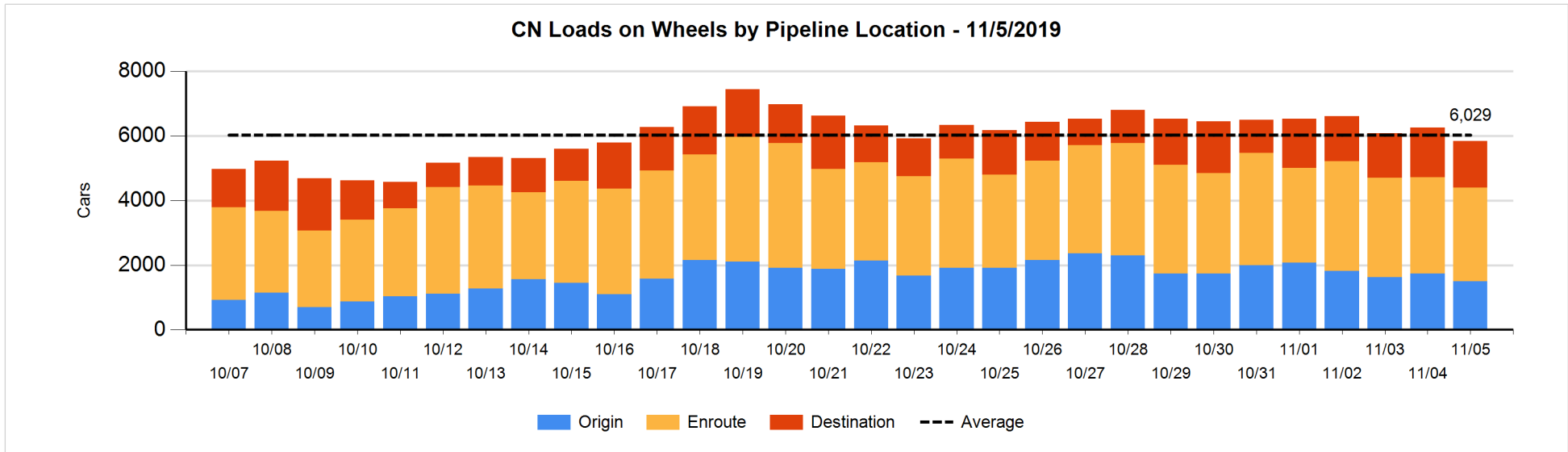


Daily Loads on Wheels By Pipeline Location - 11/5/2019

	E Canada	Prince Rupert	Thunder Bay	USA/MEX	Vancouver	Total
CN						
Origin		713	100	10	668	1,491
Enroute	454	661	408	138	1,243	2,904
Destination	97	326	222	63	730	1,438
	551	1,700	730	211	2,641	5,833
CP						
Origin	9		231	50	1,412	1,702
Enroute	62		246	106	1,695	2,109
Destination	1		915		647	1,563
	72		1,392	156	3,754	5,374
US Rail / Short Line						
Origin						
Enroute				88		88
Destination				93	17	110
				181	17	198

Change in Daily Loads on Wheels By Pipeline Location - Prior 24 Hours

	E Canada	Prince Rupert	Thunder Bay	USA/MEX	Vancouver	Total
CN						
Origin	-51	2	100	0	-303	-252
Enroute	43	-6	-25	-60	-21	-69
Destination	-45	74	-194	25	33	-107
	-53	70	-119	-35	-291	-428
CP						
Origin	1		14	48	585	648
Enroute	0		-230	-2	263	31
Destination	1		54		-126	-71
	2		-162	46	722	608
US Rail / Short Line						
Origin						
Enroute				-18		-18
Destination	-8			6	1	-1
	-8			-12	1	-19

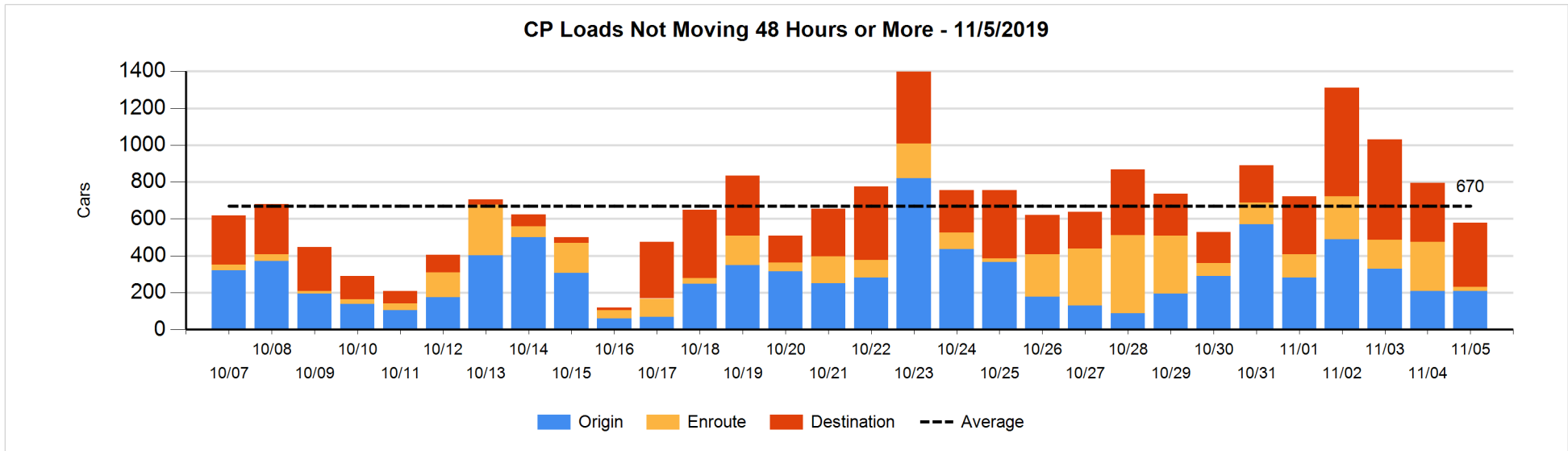
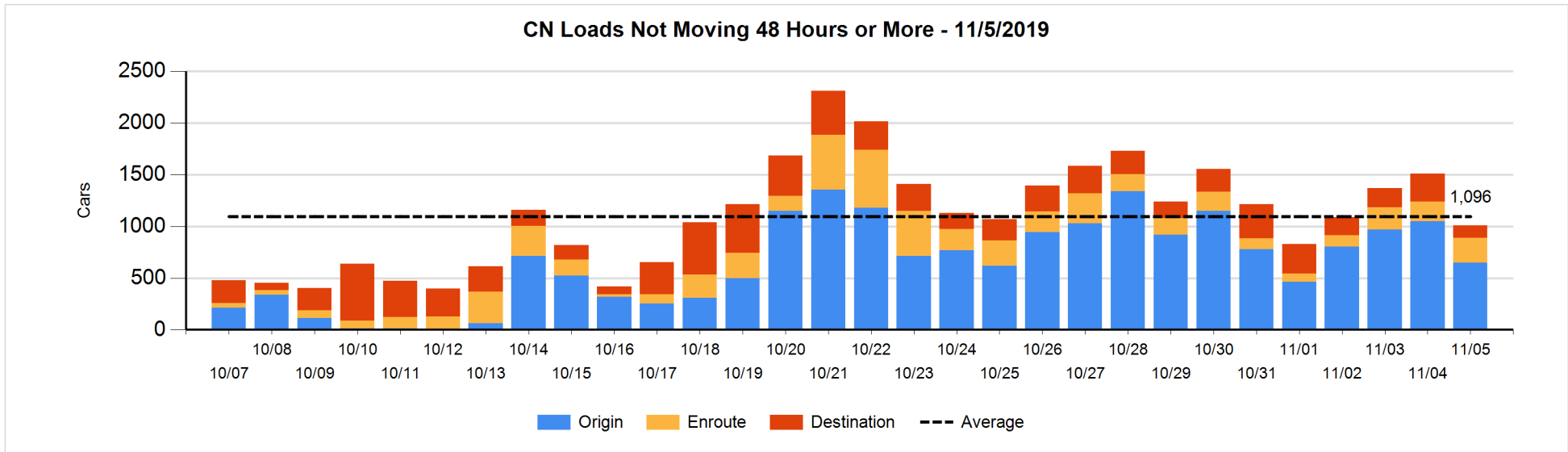


Loads Not Moving 48 Hours or More - 11/5/2019

	E Canada	Prince Rupert	Thunder Bay	USA/MEX	Vancouver	Total
CN						
Origin		411		6	229	646
Enroute	31	165	2	30	16	244
Destination	8		27	10	74	119
	39	576	29	46	319	1009
CP						
Origin			8		201	209
Enroute	2			3	17	22
Destination			169		180	349
	2		177	3	398	580
US Rail / Short Line						
Origin						
Enroute				13		13
Destination				33	13	46
				46	13	59

Change in Loads Not Moving 48 Hours or More - 11/5/2019

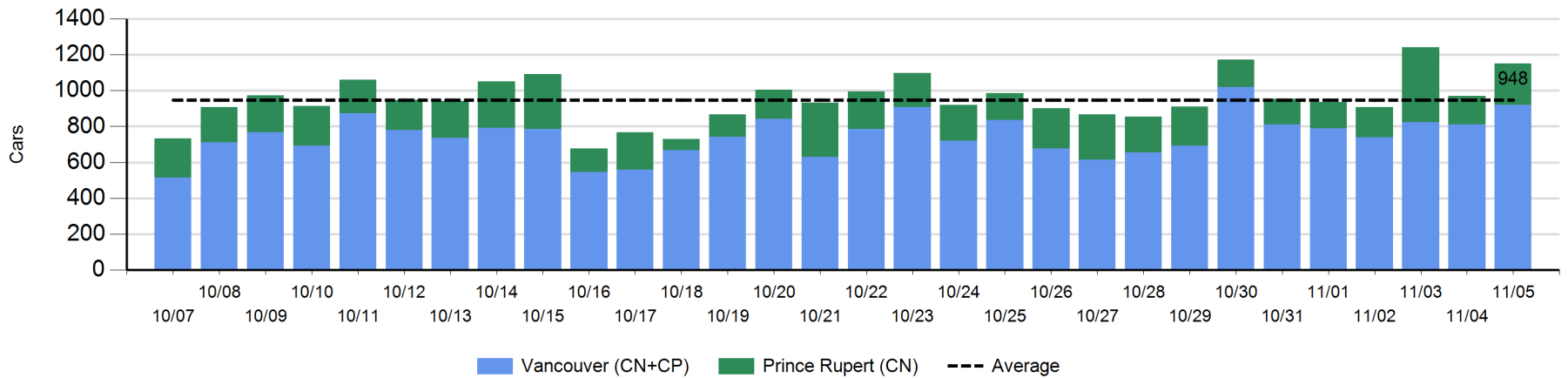
	E Canada	Prince Rupert	Thunder Bay	USA/MEX	Vancouver	Total
CN						
Origin		-300		0	-101	-401
Enroute	4	41	-1	5	3	52
Destination	-53	-47	-79	-1	27	-153
	-49	-306	-80	4	-71	-502
CP						
Origin			0		-1	-1
Enroute	-28		-81	0	-134	-243
Destination			-15		45	30
	-28		-96	0	-90	-214
US Rail / Short Line						
Origin						
Enroute				-2		-2
Destination				-16	5	-11
				-18	5	-13



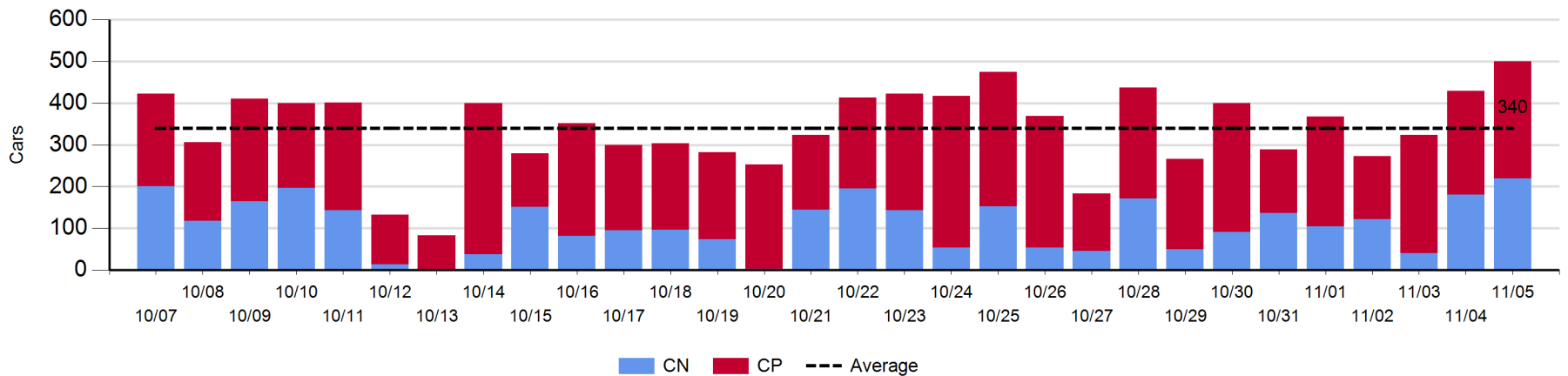
Port Unloads - 11/5/2019

	Prince Rupert	Vancouver	West Coast Total	Thunder Bay	Total
CN	233	428	661	219	880
CP		491	491	281	772
	233	919	1,152	500	1,652

West Coast Port Unloads - Prior 30 Days



Thunder Bay Port Unloads - Prior 30 Days



Port Terminal Status

Vancouver

Daily Activity for 11/5/2019

	Cars Arrived	Cars Received in Interchange	Cars Delivered in Interchange	Cars Placed for Unloading	Loads on Wheels at Destination As of 11/5/2019
CN	496	103	241	488	730
CP	333	240	103	542	647
SRY		1		2	17

Port Unloads

	11/05	11/04	Week To Date	Last Week
CN	428	378	806	2,291
CP	491	434	925	3,244
SRY	2	8	10	79

Age Profile of Loaded Cars Waiting Placement for Unloading

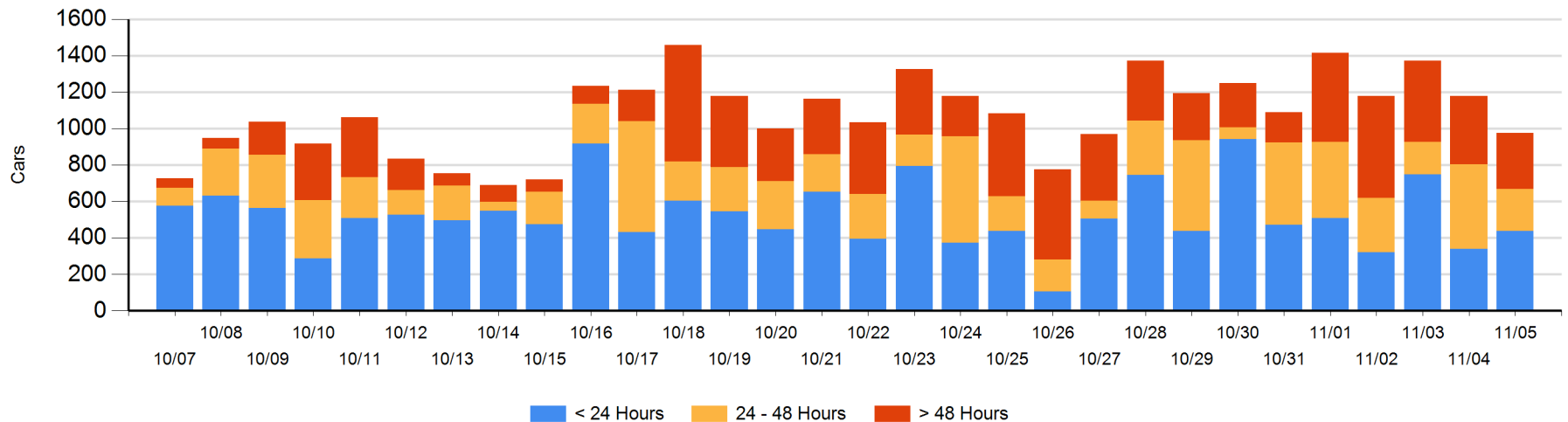
Today

	< 24 Hrs	24 - 48 Hrs	> 48-72 Hrs	> 72 Hrs	Total On Hand
CN	238	178	57	23	496
CP	199	52	115	113	479
SRY					0

Change in Last 24 Hours

	< 24 Hrs	24-48 Hrs	48 - 72 Hrs	> 72 Hrs
CN	11	99	51	-46
CP	86	-332	45	-119
SRY				

Loaded Cars on Hand Vancouver Waiting for Placement - Last 30 Days All Railways



Port Terminal Status

Prince Rupert

Daily Activity for 11/5/2019

	Cars Arrived	Cars Received in Interchange	Cars Delivered in Interchange	Cars Placed for Unloading	Loads on Wheels at Destination As of 11/5/2019
CN	345			345	326

Port Unloads

	11/05	11/04	Week To Date	Last Week
CN	233	158	391	1,439

Age Profile of Loaded Cars Waiting Placement for Unloading

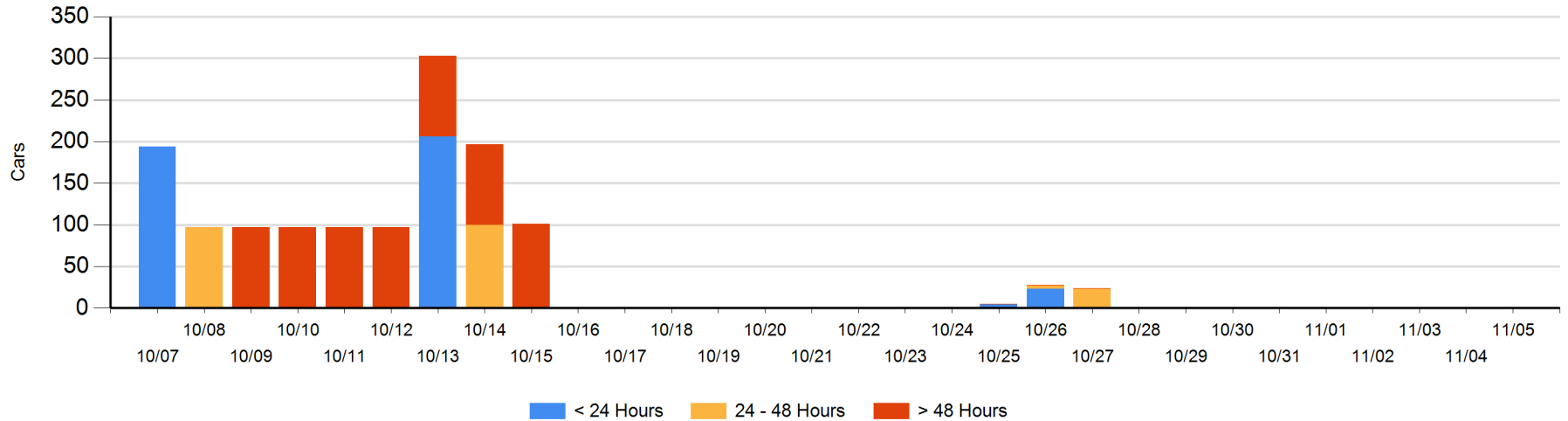
Today

	< 24 Hrs	24 - 48 Hrs	> 48-72 Hrs	> 72 Hrs	Total On Hand
CN					0

Change in Last 24 Hours

	< 24 Hrs	24-48 Hrs	48 - 72 Hrs	> 72 Hrs
CN				

Loaded Cars on Hand Prince Rupert Waiting for Placement - Last 30 Days All Railways



Port Terminal Status

Thunder Bay

Daily Activity for 11/5/2019

	Cars Arrived	Cars Received in Interchange	Cars Delivered in Interchange	Cars Placed for Unloading	Loads on Wheels at Destination As of 11/5/2019
CN	25			237	222
CP	335			313	915

Port Unloads

	11/05	11/04	Week To Date	Last Week
CN	219	181	400	716
CP	281	248	529	1,639

Age Profile of Loaded Cars Waiting Placement for Unloading

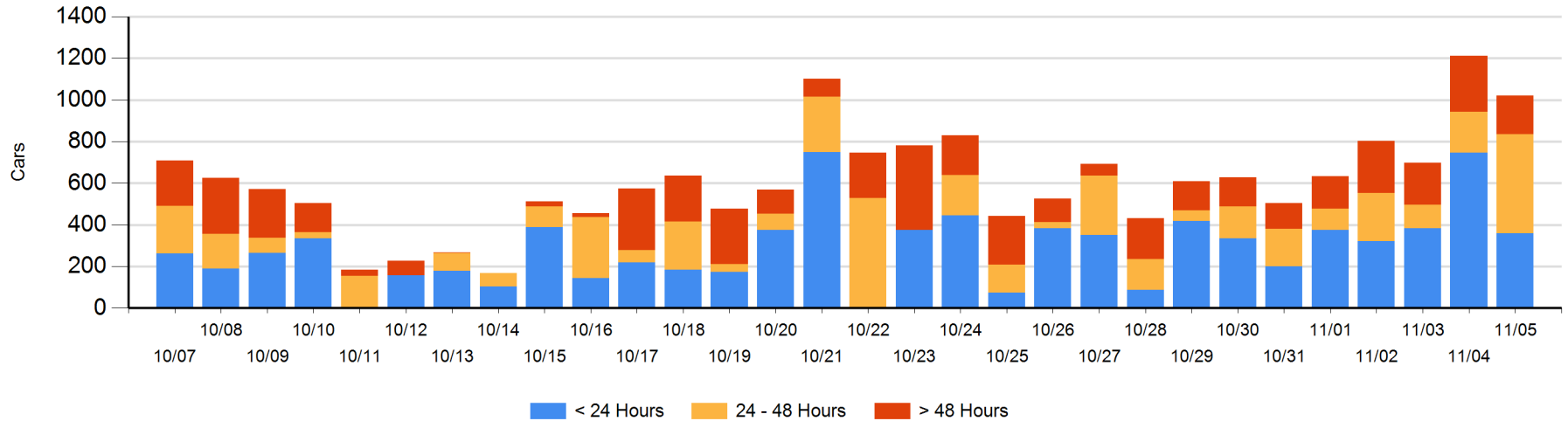
Today

	< 24 Hrs	24 - 48 Hrs	> 48-72 Hrs	> 72 Hrs	Total On Hand
CN	25	96	5	15	141
CP	335	378	69	99	881

Change in Last 24 Hours

	< 24 Hrs	24-48 Hrs	48 - 72 Hrs	> 72 Hrs
CN	-115	-32	-80	15
CP	-272	309	69	-84

Loaded Cars on Hand Thunder Bay Waiting for Placement - Last 30 Days All Railways



Measurement Definitions

Loads on Wheels	<p>Count of loaded rail cars including all rail cars that have been released loaded at origin and have not been reported by the railway as unloaded at destination.</p> <p>Counts include all rail cars (hopper cars and boxcars) moving within a pipeline.</p>
Loads Not Moving	<p>Loaded rail cars for which the railways have not reported a movement event for 48 hours or more whether the rail car is at origin, enroute or at destination.</p>
Port Unloads	<p>Count of rail cars reported by railways as unloaded at the western port destinations of Vancouver, Prince Rupert and Thunder Bay.</p> <p>Unload counts include all rail cars (hopper cars and boxcars) unloaded by all receivers including major port terminals, transloaders and other receivers.</p>
Cars Arrived	<p>Count of rail cars reported as arrived at the destination railway terminal.</p>
Cars Received in Interchange	<p>Count of rail cars received in interchange by each railway within a destination railway terminal. Interchange activity is tracked for the Vancouver and Thunder Bay pipelines as applicable.</p>
Cars Delivered in Interchange	<p>Count of rail cars delivered in interchange by each railway within a destination railway terminal. Interchange activity is tracked for the Vancouver and Thunder Bay pipelines as applicable.</p>
Cars Placed for Unloading	<p>Count of rail cars reported by the railways as placed loaded at the receiver's facility for unloading.</p>
Loads on Wheels at Destination	<p>Count of rail cars that remain under load within the destination railway terminal including rail cars that have been reported as placed for unloading but not yet reported as unloaded.</p>
Waiting Placement for Unloading	<p>Count of rail cars that have been reported as arrived at the destination railway terminal but not reported as placed for unloading by the railway.</p> <p>For the Ports of Vancouver, Prince Rupert and Thunder Bay the count of rail cars waiting placement for unloading is categorized by age – i.e. the elapsed time from arrival at destination to the current report date.</p>