

SPEED READ

- Loads on wheels decreased overnight, reflecting a decline in both CN and CP volumes. On a net basis, volumes declined due to lower volumes in the Vancouver, Prince Rupert and USA/MEX corridors offset by higher volumes in the Thunder Bay and E. Canada corridors.
- Network fluidity improved overnight, led by a decline in idle car counts on CN by 22% (-225) offset by an increase in idle car counts on CP by 23% (+131). The total count of cars for 4+ days on both railways declined 31% (-354) overnight - currently at 778 cars.
- Three days in Week 14 unloads now ahead of prior week's performance by 550 unloads, reflecting improved week over week performance across all three major ports - Vancouver, Thunder Bay and Prince Rupert.

Loads on Wheels

- Loads on wheels decreased 6% (-661) overnight, due to lower volumes on both CN and CP - combined total at 10,756 and 2% below the trailing 30-day average.
- On a net basis, the decline in loads on wheels reflects lower volumes in the Vancouver, Prince Rupert and USA/MEX corridors offset by higher volumes in the Thunder Bay and E. Canada corridors.
- CN volumes declined 9% (-520) overnight, with lower volumes across all corridors other than Thunder Bay. System wide CN loads on wheels currently at 5,315 and 12% below the trailing 30-day average.
- CP volumes declined 3% (-149) overnight, driven by a decline in volumes in the Vancouver and USA/MEX corridors offset by an increase in volumes in the E. Canada and Thunder Bay corridors. CP system wide loads on wheels currently at 5,235 and 11% above the trailing 30-day average.
- Vancouver currently at 5,899, fell 8% (-525) overnight, now 1% above the trailing 30-day average.
- The Prince Rupert pipeline currently at 1,450, declined 15% (-250) overnight, and 20% below the trailing 30-day average.
- Thunder Bay volumes increased 6% (+123) overnight - currently at 2,245 and 9% above the trailing 30-day average, with 64% of traffic moving on CP.

Hopper Car Rationing

- No hopper cars were rationed by either CN or CP in week 12.

Loads Not Moving

- **The count of cars not moving for 48+ hours decreased 6% (-94) overnight and have now decreased for the fourth consecutive day, reflecting reduced counts on CN offset by higher counts on CP. Idle car counts currently at 1,495 and 16% below the trailing 30-day average.**
- CN
 - **The count of idle cars for 48+ hours decreased 22% (-225) overnight - currently at 784 cars.**
 - The number of cars idle for 4+ days declined 41% (-325) overnight - currently at 461 cars.
 - The count of cars not moving for 7+ days decreased 12% (-23) overnight - currently at 162 cars.
 - Vancouver represents 39% of all idle cars.
 - In total 56% of all idle cars are dwelling at origin locations.
- CP
 - **CP idle car counts for 48+ hours increased 23% (+131) overnight - currently at 711 cars.**
 - The number of cars idle for 4+ days fell 8% (-29) overnight - now at 317 cars.
 - The number of cars idle for 7+ days declined 6% (-6) overnight and have now decreased for the third consecutive day - currently at 95 cars.

- Vancouver accounts for 57% of all idle cars.
- In total 53% of all idle cars are dwelling at origin locations.

Port Performance

- CN and CP reported a total of 1,560 cars unloaded at the three major ports, 20% above the trailing 30-day average. Three days in Week 14 unloads now ahead of last week's pace by 550 unloads, reflecting higher unloads across all three major ports - Vancouver, Thunder Bay and Prince Rupert.
- Vancouver
 - 885 unloads reported by CN and CP at the Port of Vancouver; CN - 392 and CP - 493. Three days in Week 14 unloads are tracking ahead of last week's performance by more than 200 unloads.
 - There are more than 1,100 cars on site at Vancouver with more than 650 cars arriving at the port in the last 24 hours.
 - CN and CP have 1,500 cars in British Columbia en route to Vancouver, with 450 cars at Kamloops and west, and 55% of traffic moving on CP.
- Prince Rupert
 - Prince Rupert reported 250 unloads, now ahead of last week's unloads after three days by more than 50 unloads.
 - Loads on wheels remain above 1,000 cars - currently at 1,450 cars.
 - There are about 300 cars west of Jasper en route to Prince Rupert.
 - There are 250 cars on site at Prince Rupert with more than 150 cars arriving at the port in the last 24 hours.
- Thunder Bay
 - 425 unloads were reported at Thunder Bay yesterday. Three days in Week 14 unloads are tracking ahead of last week's pace by 250 unloads.
 - There are more than 1,100 cars on site at Thunder Bay with 400 cars arriving at the port in the prior 24 hours.
 - There are 150 cars en route to Thunder Bay from Winnipeg and east.

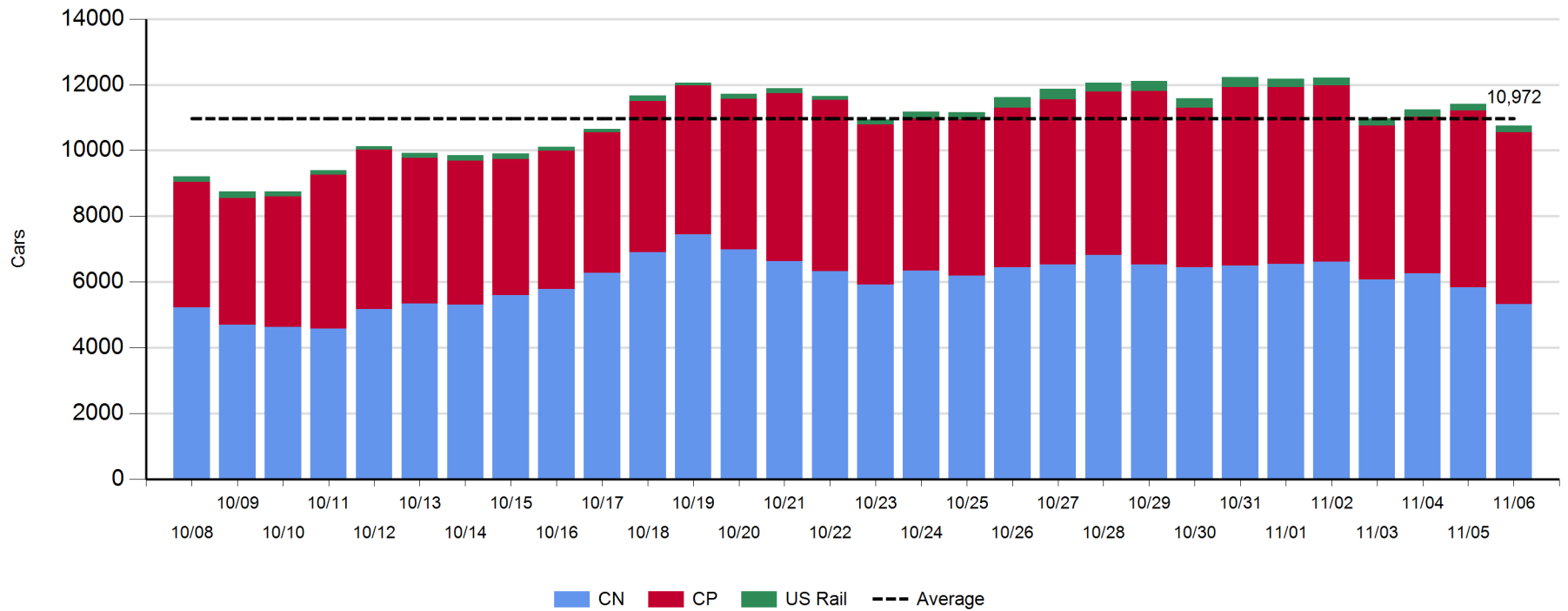
Daily Loads on Wheels - 11/6/2019

	E Canada	Prince Rupert	Thunder Bay	USA/MEX	Vancouver	Total
CN	496	1,450	803	165	2,401	5,315
CP	171		1,442	155	3,467	5,235
Short Line					31	31
US Rail				175		175
	667	1,450	2,245	495	5,899	10,756

Change in Loads on Wheels - Prior 24 Hours

	E Canada	Prince Rupert	Thunder Bay	USA/MEX	Vancouver	Total
CN	-55	-250	73	-46	-242	-520
CP	99		50	-1	-297	-149
Short Line					14	14
US Rail				-6		-6
	44	-250	123	-53	-525	-661

Loads on Wheels - Prior 30 Days

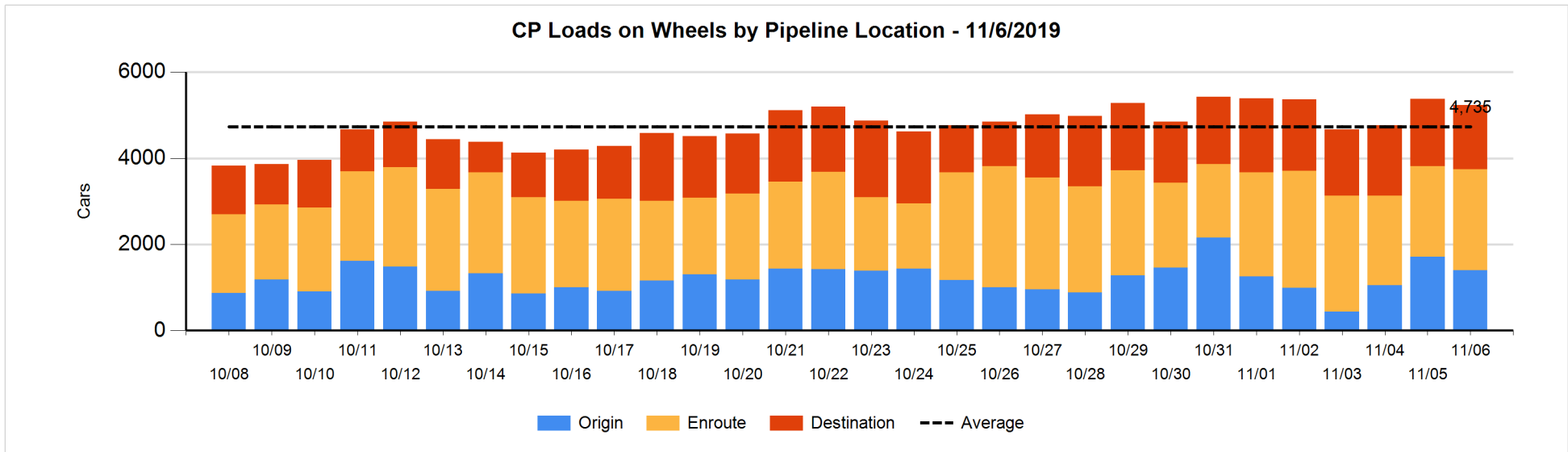
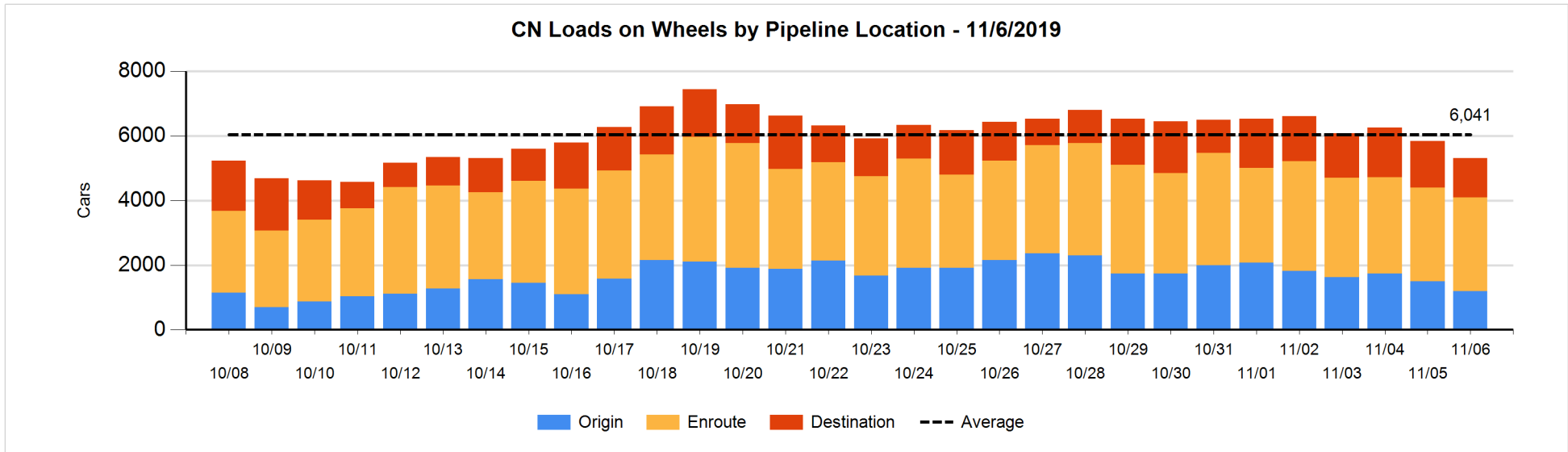


Daily Loads on Wheels By Pipeline Location - 11/6/2019

	E Canada	Prince Rupert	Thunder Bay	USA/MEX	Vancouver	Total
CN						
Origin	5	412	196	8	574	1,195
Enroute	316	791	238	119	1,427	2,891
Destination	175	247	369	38	400	1,229
	496	1,450	803	165	2,401	5,315
CP						
Origin	107		234		1,058	1,399
Enroute	63		465	155	1,660	2,343
Destination	1		743		749	1,493
	171		1,442	155	3,467	5,235
US Rail / Short Line						
Origin						
Enroute				68		68
Destination				107	31	138
				175	31	206

Change in Daily Loads on Wheels By Pipeline Location - Prior 24 Hours

	E Canada	Prince Rupert	Thunder Bay	USA/MEX	Vancouver	Total
CN						
Origin	5	-301	96	-2	-96	-298
Enroute	-138	130	-170	-19	184	-13
Destination	78	-79	147	-25	-330	-209
	-55	-250	73	-46	-242	-520
CP						
Origin	98		3	-50	-364	-313
Enroute	1		219	49	-35	234
Destination	0		-172		102	-70
	99		50	-1	-297	-149
US Rail / Short Line						
Origin						
Enroute				-20		-20
Destination				14	14	28
				-6	14	8

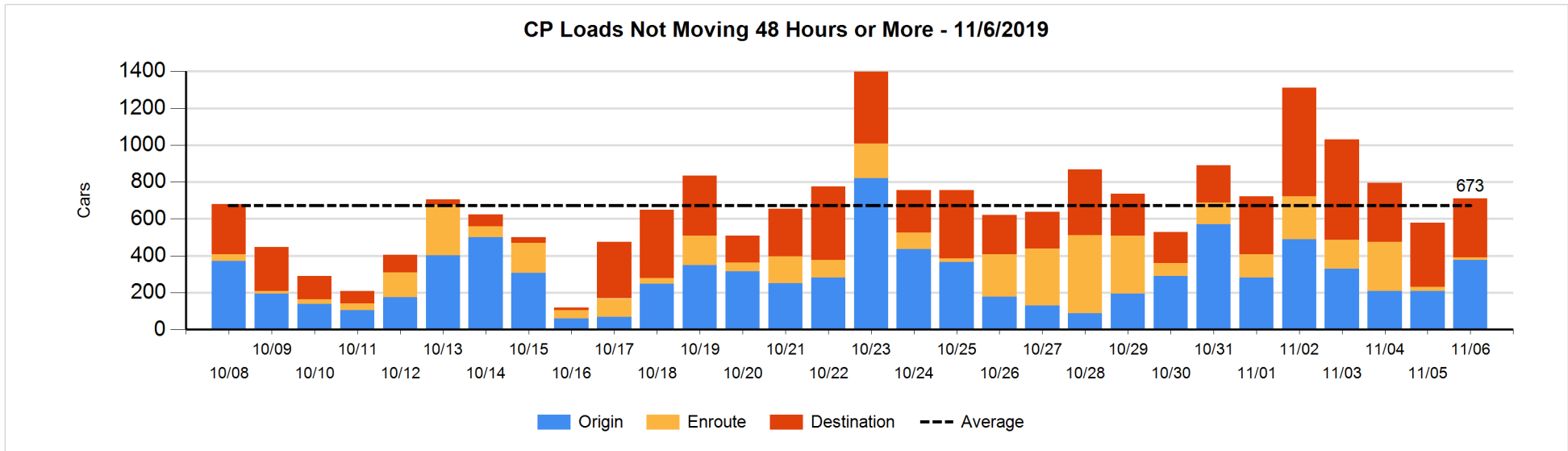
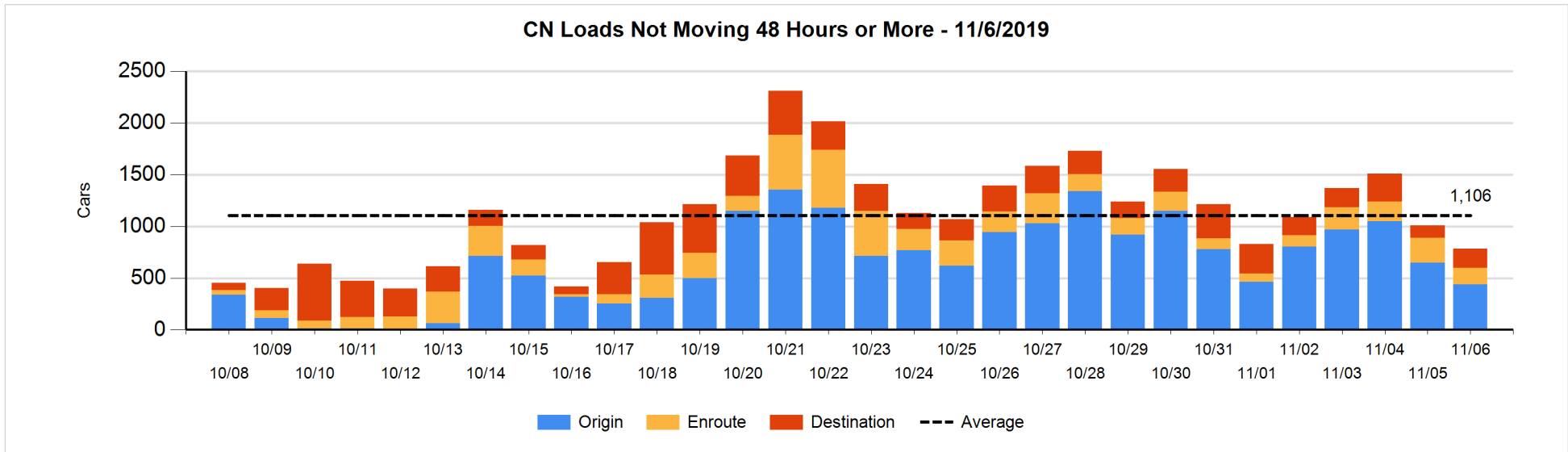


Loads Not Moving 48 Hours or More - 11/6/2019

	E Canada	Prince Rupert	Thunder Bay	USA/MEX	Vancouver	Total
CN						
Origin		208		6	224	438
Enroute	14	86	1	27	31	159
Destination	52		67	17	51	187
	66	294	68	50	306	784
CP						
Origin			8		369	377
Enroute			2	2	10	14
Destination			294		26	320
			304	2	405	711
US Rail / Short Line						
Origin						
Enroute				19		19
Destination				21	12	33
				40	12	52

Change in Loads Not Moving 48 Hours or More - 11/6/2019

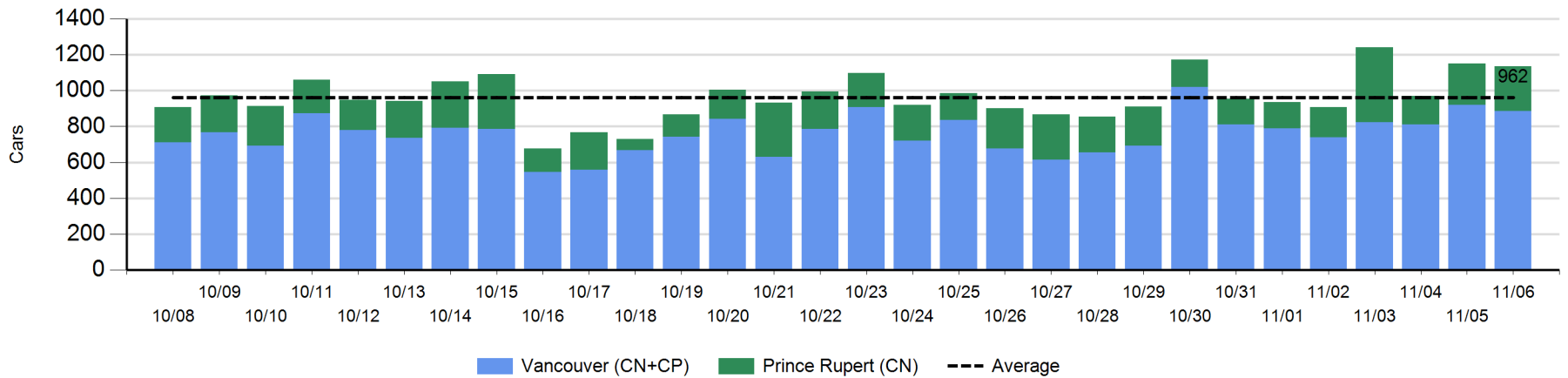
	E Canada	Prince Rupert	Thunder Bay	USA/MEX	Vancouver	Total
CN						
Origin		-203		0	-5	-208
Enroute	-17	-79	-1	-3	15	-85
Destination	44		40	7	-23	68
	27	-282	39	4	-13	-225
CP						
Origin			0		168	168
Enroute	-2		2	-1	-7	-8
Destination			125		-154	-29
	-2		127	-1	7	131
US Rail / Short Line						
Origin						
Enroute				6		6
Destination				-12	-1	-13
				-6	-1	-7



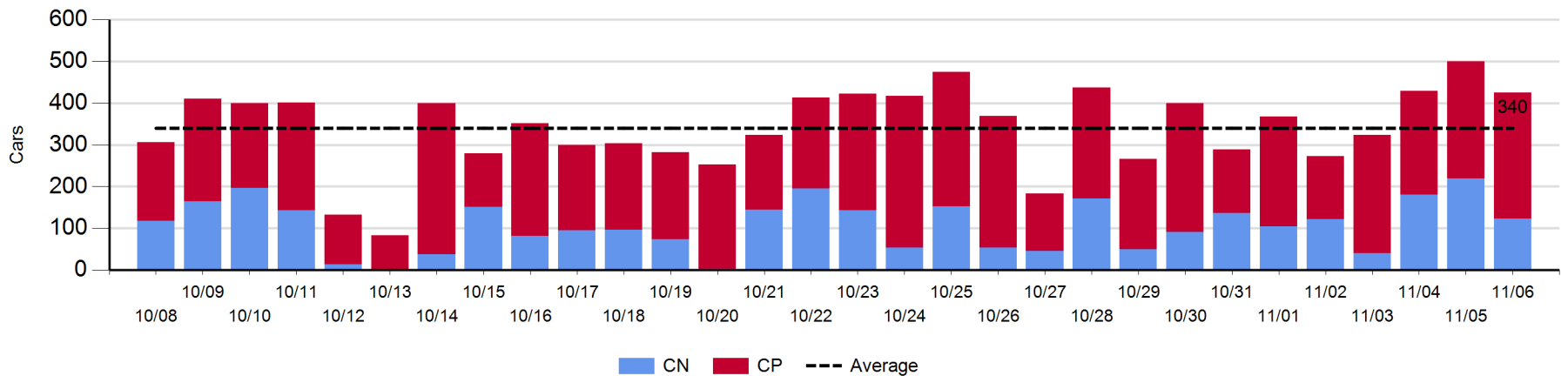
Port Unloads - 11/6/2019

	Prince Rupert	Vancouver	West Coast Total	Thunder Bay	Total
CN	250	392	642	123	765
CP		493	493	302	795
	250	885	1,135	425	1,560

West Coast Port Unloads - Prior 30 Days



Thunder Bay Port Unloads - Prior 30 Days



Port Terminal Status

Vancouver

Daily Activity for 11/6/2019

	Cars Arrived	Cars Received in Interchange	Cars Delivered in Interchange	Cars Placed for Unloading	Loads on Wheels at Destination As of 11/6/2019
CN	26	173	157	291	400
CP	649	157	189	545	749
SRY	1	16		4	31

Port Unloads

	11/06	11/05	Week To Date	Last Week
CN	392	428	1,198	2,291
CP	493	491	1,418	3,244
SRY	5	2	15	79

Age Profile of Loaded Cars Waiting Placement for Unloading

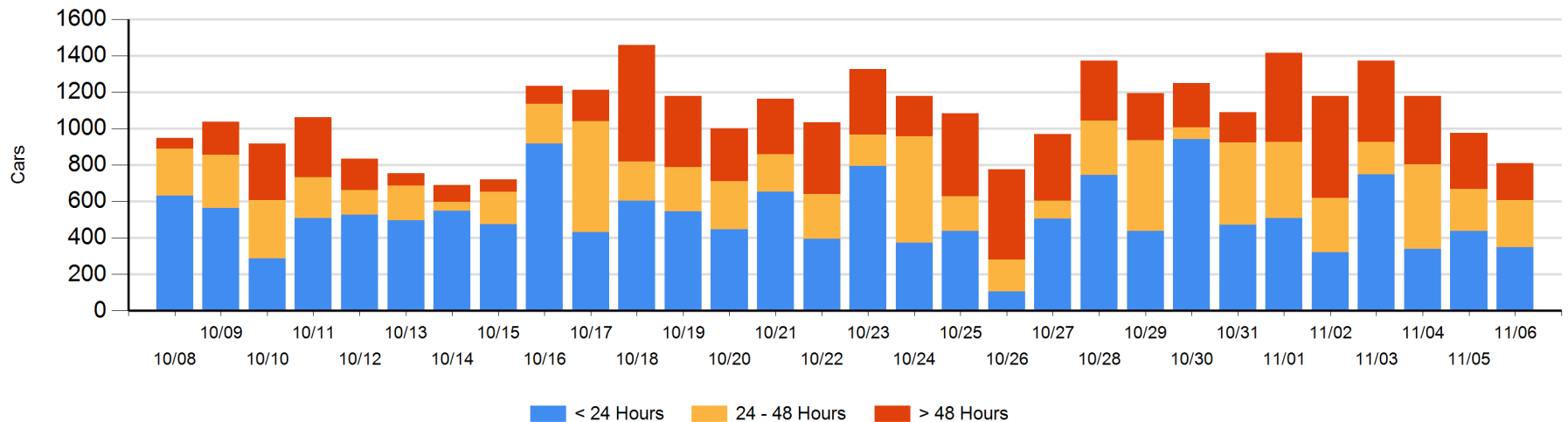
Today

	< 24 Hrs	24 - 48 Hrs	> 48-72 Hrs	> 72 Hrs	Total On Hand
CN	14	10	36	36	96
CP	335	249	52	79	715
SRY					0

Change in Last 24 Hours

	< 24 Hrs	24-48 Hrs	48 - 72 Hrs	> 72 Hrs
CN	-225	-168	-21	13
CP	137	197	-63	-34
SRY				

Loaded Cars on Hand Vancouver Waiting for Placement - Last 30 Days All Railways



Port Terminal Status

Prince Rupert

Daily Activity for 11/6/2019

	Cars Arrived	Cars Received in Interchange	Cars Delivered in Interchange	Cars Placed for Unloading	Loads on Wheels at Destination As of 11/6/2019
CN	167			171	247

Port Unloads

	11/06	11/05	Week To Date	Last Week
CN	250	233	641	1,439

Age Profile of Loaded Cars Waiting Placement for Unloading

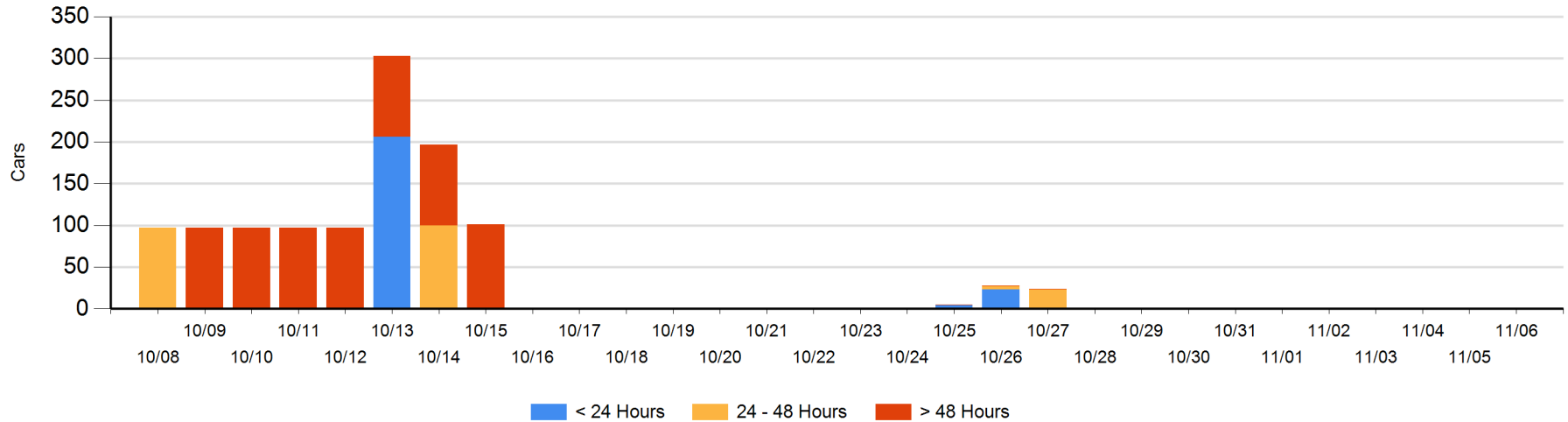
Today

	< 24 Hrs	24 - 48 Hrs	> 48-72 Hrs	> 72 Hrs	Total On Hand
CN					0

Change in Last 24 Hours

	< 24 Hrs	24-48 Hrs	48 - 72 Hrs	> 72 Hrs
CN				

Loaded Cars on Hand Prince Rupert Waiting for Placement - Last 30 Days All Railways



Port Terminal Status

Thunder Bay

Daily Activity for 11/6/2019

	Cars Arrived	Cars Received in Interchange	Cars Delivered in Interchange	Cars Placed for Unloading	Loads on Wheels at Destination As of 11/6/2019
CN	269			55	369
CP	130			308	743

Port Unloads

	11/06	11/05	Week To Date	Last Week
CN	123	219	523	716
CP	302	281	831	1,639

Age Profile of Loaded Cars Waiting Placement for Unloading

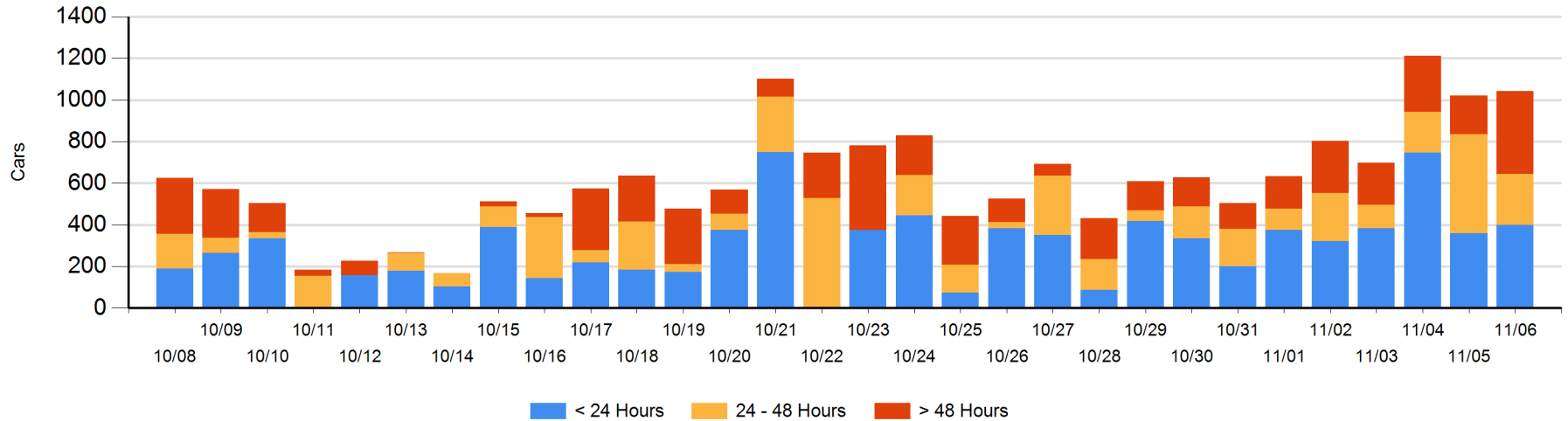
Today

	< 24 Hrs	24 - 48 Hrs	> 48-72 Hrs	> 72 Hrs	Total On Hand
CN	269	25	41	20	355
CP	130	220	185	152	687

Change in Last 24 Hours

	< 24 Hrs	24-48 Hrs	48 - 72 Hrs	> 72 Hrs
CN	244	-71	36	5
CP	-205	-158	116	53

Loaded Cars on Hand Thunder Bay Waiting for Placement - Last 30 Days All Railways



Measurement Definitions

Loads on Wheels	<p>Count of loaded rail cars including all rail cars that have been released loaded at origin and have not been reported by the railway as unloaded at destination.</p> <p>Counts include all rail cars (hopper cars and boxcars) moving within a pipeline.</p>
Loads Not Moving	<p>Loaded rail cars for which the railways have not reported a movement event for 48 hours or more whether the rail car is at origin, enroute or at destination.</p>
Port Unloads	<p>Count of rail cars reported by railways as unloaded at the western port destinations of Vancouver, Prince Rupert and Thunder Bay.</p> <p>Unload counts include all rail cars (hopper cars and boxcars) unloaded by all receivers including major port terminals, transloaders and other receivers.</p>
Cars Arrived	<p>Count of rail cars reported as arrived at the destination railway terminal.</p>
Cars Received in Interchange	<p>Count of rail cars received in interchange by each railway within a destination railway terminal. Interchange activity is tracked for the Vancouver and Thunder Bay pipelines as applicable.</p>
Cars Delivered in Interchange	<p>Count of rail cars delivered in interchange by each railway within a destination railway terminal. Interchange activity is tracked for the Vancouver and Thunder Bay pipelines as applicable.</p>
Cars Placed for Unloading	<p>Count of rail cars reported by the railways as placed loaded at the receiver's facility for unloading.</p>
Loads on Wheels at Destination	<p>Count of rail cars that remain under load within the destination railway terminal including rail cars that have been reported as placed for unloading but not yet reported as unloaded.</p>
Waiting Placement for Unloading	<p>Count of rail cars that have been reported as arrived at the destination railway terminal but not reported as placed for unloading by the railway.</p> <p>For the Ports of Vancouver, Prince Rupert and Thunder Bay the count of rail cars waiting placement for unloading is categorized by age – i.e. the elapsed time from arrival at destination to the current report date.</p>