

SPEED READ

- Loads on wheels decreased slightly overnight, marking lower CP traffic offset by an increase in CN volumes. On a net basis, volumes fell due to lower traffic in the Vancouver, E. Canada and Prince Rupert corridors offset by higher traffic in the Thunder Bay and USA/MEX corridors.
- Network fluidity deteriorated overnight, led by an increase in idle car counts on CP by 73% (+522) offset by a decline in idle car counts on CN by 1% (-5). The total count of cars for 4+ days on both railways decreased 41% (-320) overnight - currently at 458 cars.
- Four days in Week 14 unloads now ahead of prior week's performance by more than 650 unloads, marking improved week over week performance across all three major ports - Vancouver, Thunder Bay and Prince Rupert.

Loads on Wheels

- Loads on wheels decreased slightly by 1% (-55) overnight, due to lower traffic on CP offset by higher traffic on CN - combined total at 10,701 and 3% below the trailing 30-day average.
- On a net basis, the decline in loads on wheels reflects lower traffic in the Vancouver, E. Canada and Prince Rupert corridors offset by higher traffic in the Thunder Bay and USA/MEX corridors.
- CN volumes increased 5% (+242) overnight, with higher traffic in the Thunder Bay and USA/MEX corridors offset by lower traffic in the E. Canada, Prince Rupert and Vancouver corridors. System wide CN loads on wheels presently at 5,557 and 8% below the trailing 30-day average.
- CP volumes decreased 6% (-324) overnight, driven by a decline in traffic across all corridors other than E. Canada. CP system wide loads on wheels currently at 4,911 and 3% above the trailing 30-day average.
- Vancouver currently at 5,623, decreased 5% (-276) overnight, now 4% below the trailing 30-day average.
- The Prince Rupert pipeline presently at 1,411, fell 3% (-39) overnight, and 22% below the trailing 30-day average.
- Thunder Bay volumes increased significantly by 12% (+279) overnight - presently at 2,524 and 21% above the trailing 30-day average, with 57% of traffic moving on CP.

Hopper Car Rationing

- No hopper cars were rationed by either CN or CP in week 13.

Loads Not Moving

- **The count of cars not moving for 48+ hours increased 35% (+517) overnight, marking higher counts on CP offset by lower counts on CN. Idle car counts presently at 2,012 and 11% above the trailing 30-day average.**
- CN
 - **The count of idle cars for 48+ hours declined marginally by 1% (-5) overnight and have now decreased for the third consecutive day - presently at 779 cars.**
 - The number of cars idle for 4+ days decreased 58% (-266) overnight - presently at 195 cars.
 - The count of cars not moving for 7+ days fell 5% (-8) overnight - presently at 154 cars.
 - Vancouver represents 34% of all idle cars.
 - In total 43% of all idle cars are dwelling at origin locations.
- CP
 - **CP idle car counts for 48+ hours gained significantly by 73% (+522) overnight - presently at 1,233 cars.**

- The number of cars idle for 4+ days fell 17% (-54) overnight and have now decreased for the third consecutive day - presently at 263 cars.
- The number of cars idle for 7+ days increased 117% (+111) overnight - currently at 206 cars, the highest seen in the last 30 days.
- Vancouver accounts for 79% of all idle cars.
- In total 65% of all idle cars are dwelling at origin locations.

Port Performance

- CN and CP reported a total of 1,367 cars unloaded at the three major ports, 5% above the trailing 30-day average. Four days in Week 14 unloads now ahead of last week's pace by more than 650 unloads, marking higher unloads across all three major ports - Vancouver, Thunder Bay and Prince Rupert.
- Vancouver
 - 835 unloads reported by CN and CP at the Port of Vancouver; CN - 283 and CP - 552. Four days in Week 14 unloads are tracking ahead of last week's performance by about 250 unloads.
 - There are 1,650 cars on site at Vancouver with 1,300 cars arriving at the port in the last 24 hours.
 - CN and CP have 1,150 cars in British Columbia en route to Vancouver, with 550 cars at Kamloops and west, and 56% of traffic moving on CP.
- Prince Rupert
 - Prince Rupert reported 240 unloads, now ahead of last week's unloads after four days by more than 150 unloads.
 - Loads on wheels remain above 1,000 cars - currently at 1,411 cars.
 - There are more than 550 cars west of Jasper en route to Prince Rupert.
 - There are 100 cars on site at Prince Rupert with 100 cars arriving at the port in the last 24 hours.
- Thunder Bay
 - 292 unloads were reported at Thunder Bay yesterday. Four days in Week 14 unloads are tracking ahead of last week's pace by 250 unloads.
 - There are 850 cars on site at Thunder Bay with around 50 cars arriving at the port in the prior 24 hours.
 - There are 850 cars en route to Thunder Bay from Winnipeg and east.

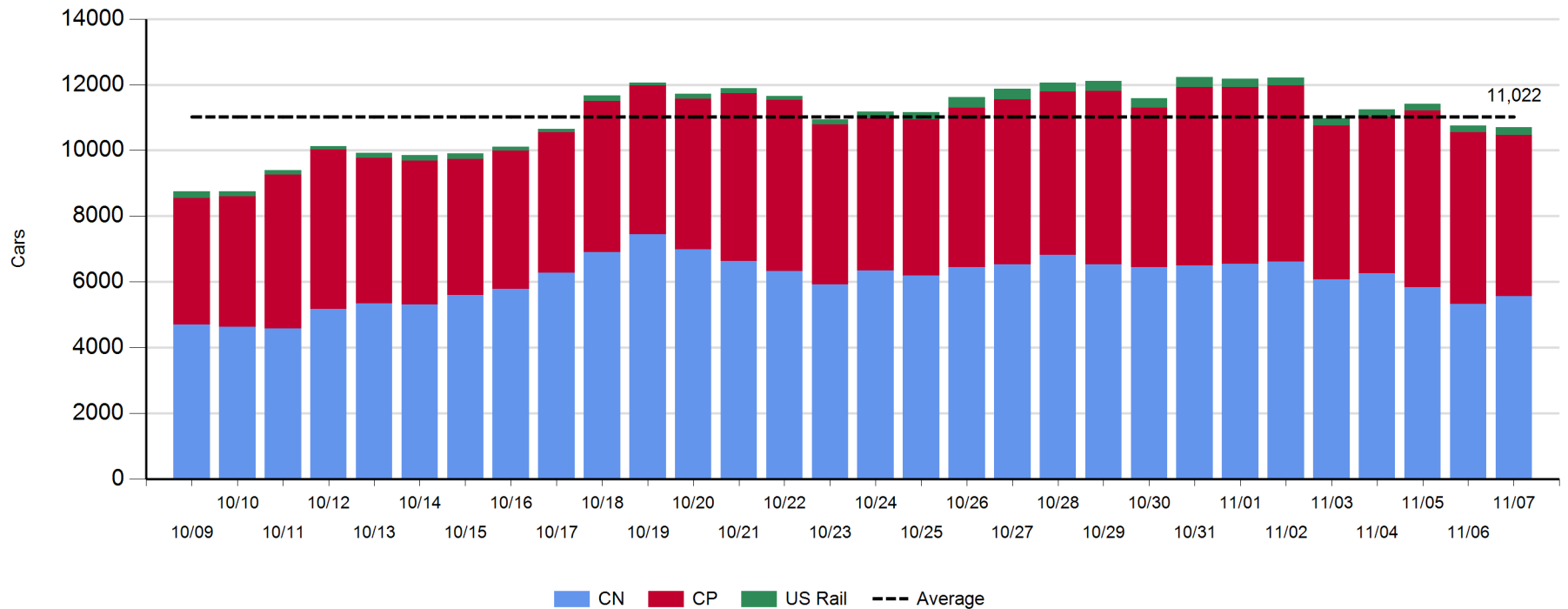
Daily Loads on Wheels - 11/7/2019

	E Canada	Prince Rupert	Thunder Bay	USA/MEX	Vancouver	Total
CN	396	1,411	1,094	284	2,372	5,557
CP	172		1,430	91	3,218	4,911
Short Line					33	33
US Rail				200		200
	568	1,411	2,524	575	5,623	10,701

Change in Loads on Wheels - Prior 24 Hours

	E Canada	Prince Rupert	Thunder Bay	USA/MEX	Vancouver	Total
CN	-100	-39	291	119	-29	242
CP	1		-12	-64	-249	-324
Short Line					2	2
US Rail				25		25
	-99	-39	279	80	-276	-55

Loads on Wheels - Prior 30 Days

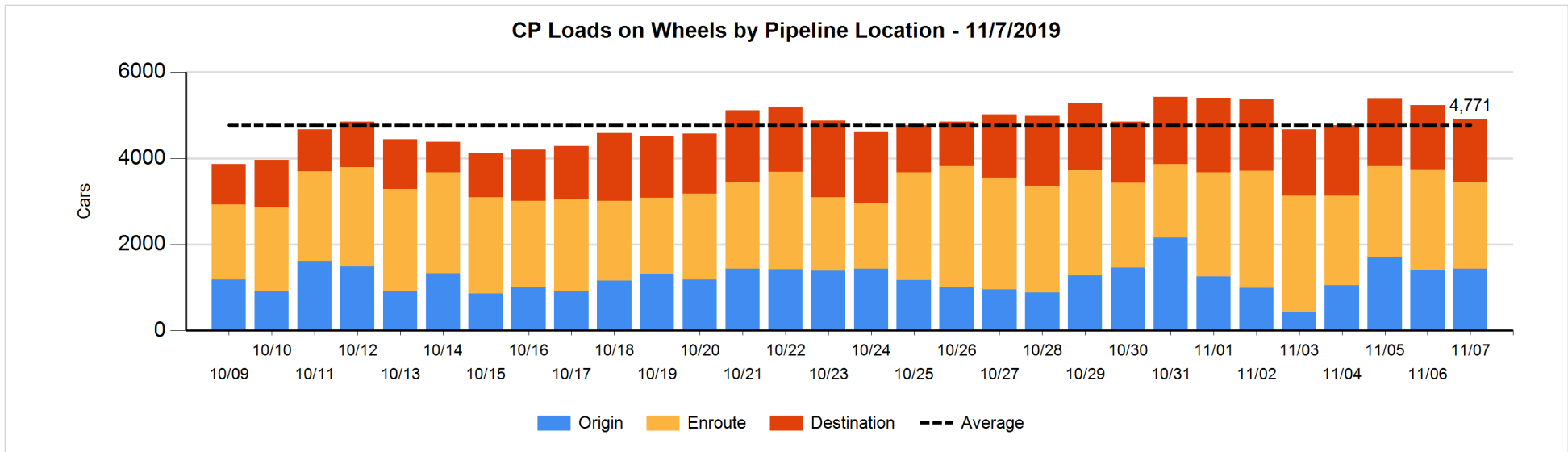
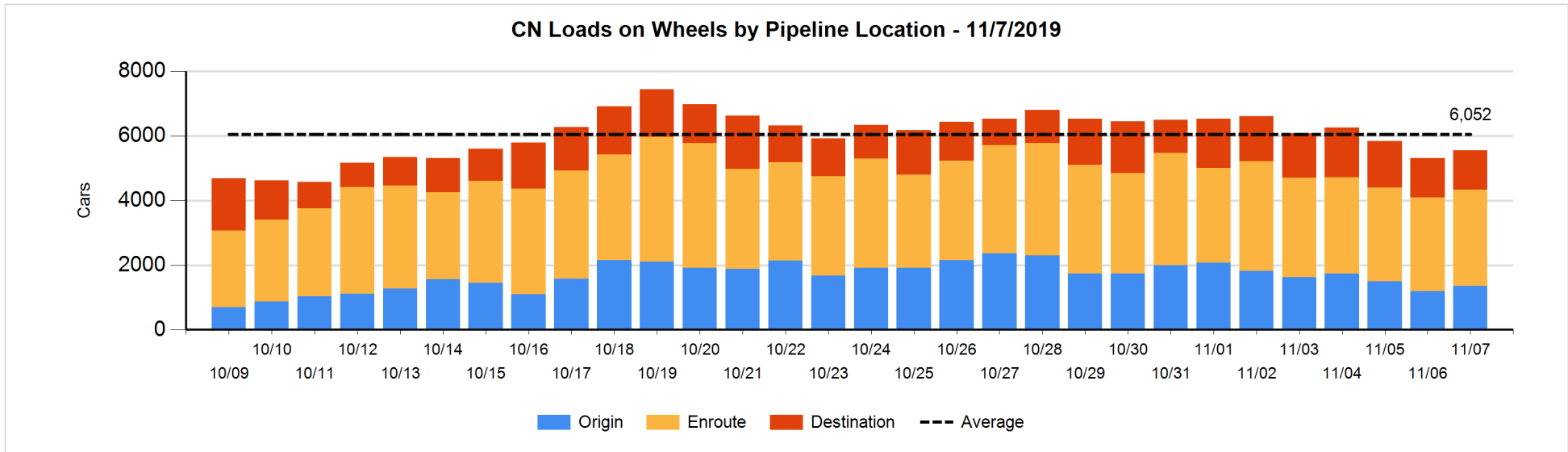


Daily Loads on Wheels By Pipeline Location - 11/7/2019

	E Canada	Prince Rupert	Thunder Bay	USA/MEX	Vancouver	Total
CN						
Origin	59	354	297	144	501	1,355
Enroute	283	955	404	117	1,221	2,980
Destination	54	102	393	23	650	1,222
	396	1,411	1,094	284	2,372	5,557
CP						
Origin	52		340	2	1,039	1,433
Enroute	119		628	54	1,219	2,020
Destination	1		462	35	960	1,458
	172		1,430	91	3,218	4,911
US Rail / Short Line						
Origin						
Enroute				58		58
Destination				142	33	175
				200	33	233

Change in Daily Loads on Wheels By Pipeline Location - Prior 24 Hours

	E Canada	Prince Rupert	Thunder Bay	USA/MEX	Vancouver	Total
CN						
Origin	54	-58	101	136	-73	160
Enroute	-33	164	166	-2	-206	89
Destination	-121	-145	24	-15	250	-7
	-100	-39	291	119	-29	242
CP						
Origin	-55		106	2	-19	34
Enroute	56		163	-101	-441	-323
Destination	0		-281	35	211	-35
	1		-12	-64	-249	-324
US Rail / Short Line						
Origin						
Enroute				-10		-10
Destination				35	2	37
				25	2	27

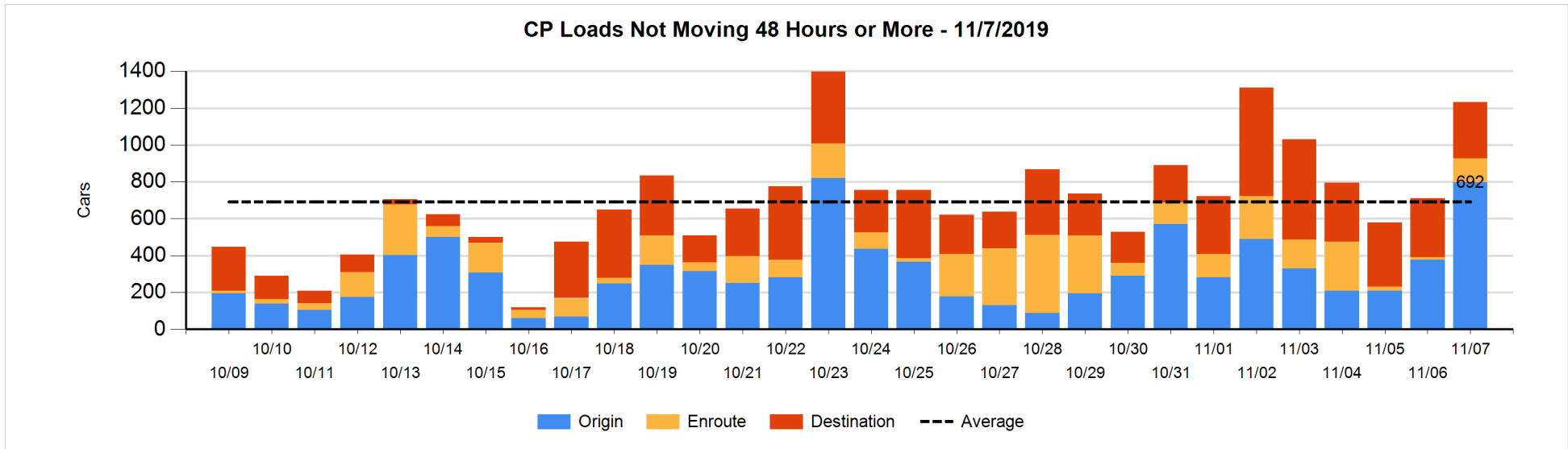
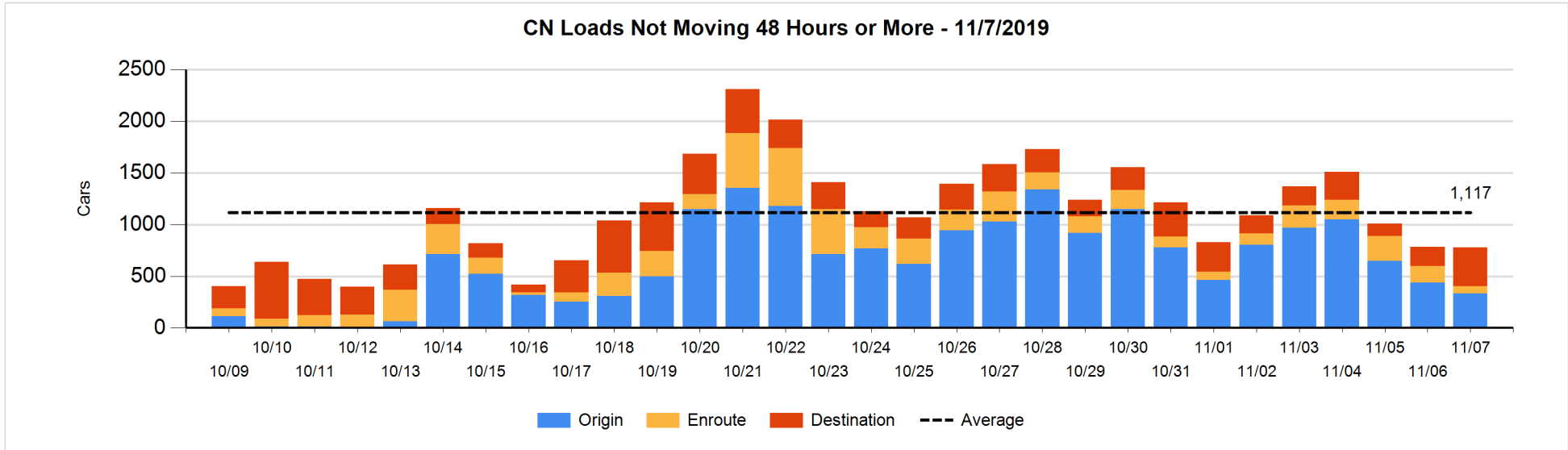


Loads Not Moving 48 Hours or More - 11/7/2019

	E Canada	Prince Rupert	Thunder Bay	USA/MEX	Vancouver	Total
CN						
Origin		204		6	123	333
Enroute	25	17	1	19	7	69
Destination	34	102	92	17	132	377
	59	323	93	42	262	779
CP						
Origin	1		15		782	798
Enroute			5	4	121	130
Destination			233		72	305
	1		253	4	975	1233
US Rail / Short Line						
Origin						
Enroute				11		11
Destination				19	7	26
				30	7	37

Change in Loads Not Moving 48 Hours or More - 11/7/2019

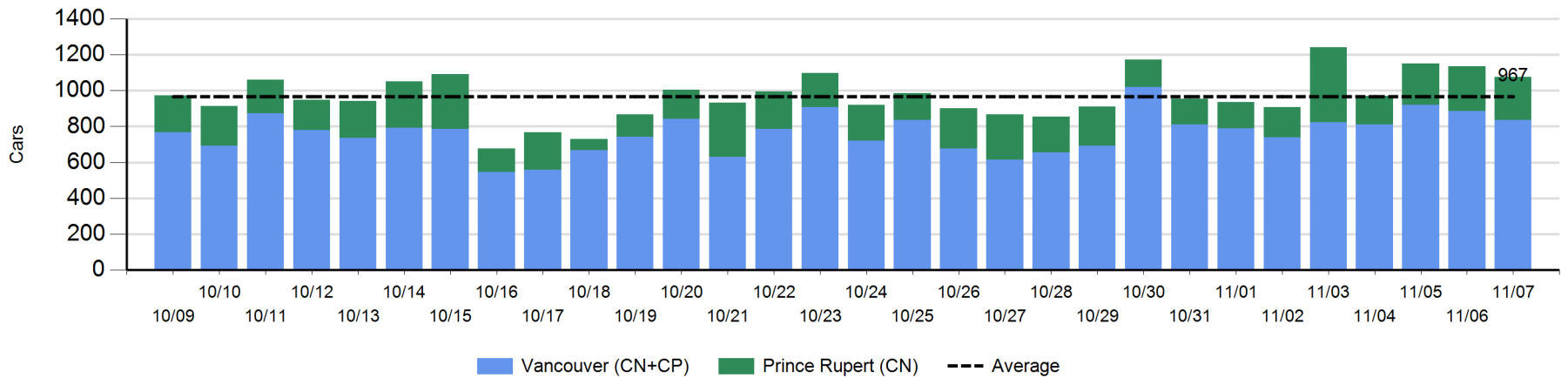
	E Canada	Prince Rupert	Thunder Bay	USA/MEX	Vancouver	Total
CN						
Origin		-4		0	-101	-105
Enroute	11	-69	0	-8	-24	-90
Destination	-18	102	25	0	81	190
	-7	29	25	-8	-44	-5
CP						
Origin	1		7		413	421
Enroute			3	2	111	116
Destination			-61		46	-15
	1		-51	2	570	522
US Rail / Short Line						
Origin						
Enroute				-8		-8
Destination				-2	-5	-7
				-10	-5	-15



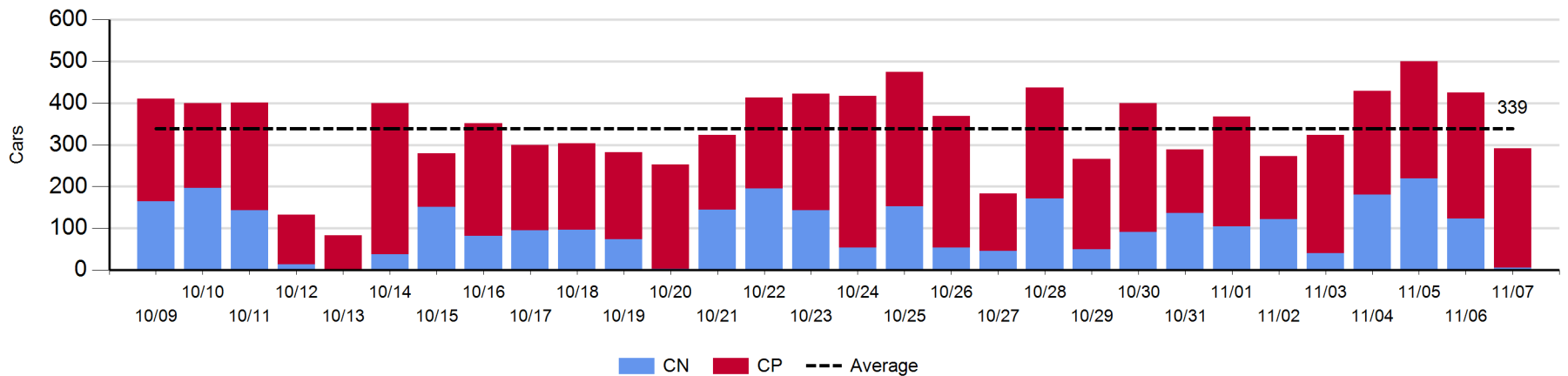
Port Unloads - 11/7/2019

	Prince Rupert	Vancouver	West Coast Total	Thunder Bay	Total
CN	240	283	523	6	529
CP		552	552	286	838
	240	835	1,075	292	1,367

West Coast Port Unloads - Prior 30 Days



Thunder Bay Port Unloads - Prior 30 Days



Port Terminal Status

Vancouver

Daily Activity for 11/7/2019

	Cars Arrived	Cars Received in Interchange	Cars Delivered in Interchange	Cars Placed for Unloading	Loads on Wheels at Destination As of 11/7/2019
CN	532	4	25	411	650
CP	763	17	4	416	960
SRY		8		9	33

Port Unloads

	11/07	11/06	Week To Date	Last Week
CN	283	392	1,481	2,291
CP	552	493	1,970	3,244
SRY	9	5	24	79

Age Profile of Loaded Cars Waiting Placement for Unloading

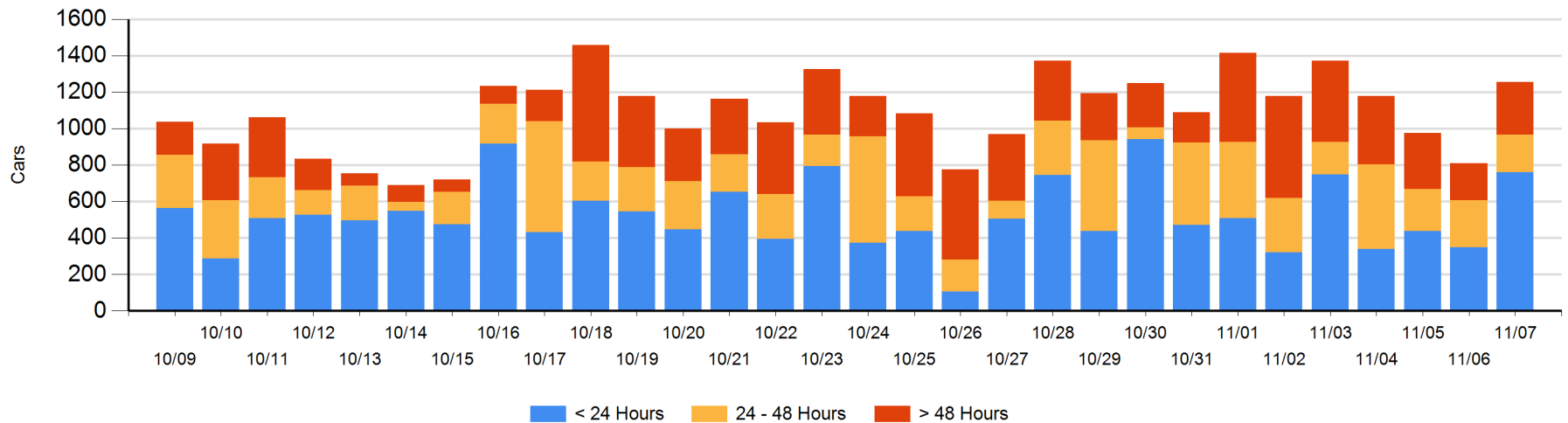
Today

	< 24 Hrs	24 - 48 Hrs	> 48-72 Hrs	> 72 Hrs	Total On Hand
CN	282	14	9	22	327
CP	479	192	225	32	928
SRY					0

Change in Last 24 Hours

	< 24 Hrs	24-48 Hrs	48 - 72 Hrs	> 72 Hrs
CN	268	4	-27	-14
CP	144	-57	173	-47
SRY				

Loaded Cars on Hand Vancouver Waiting for Placement - Last 30 Days All Railways



Port Terminal Status

Prince Rupert

Daily Activity for 11/7/2019

	Cars Arrived	Cars Received in Interchange	Cars Delivered in Interchange	Cars Placed for Unloading	Loads on Wheels at Destination As of 11/7/2019
CN	95			95	102

Port Unloads

	11/07	11/06	Week To Date	Last Week
CN	240	250	881	1,439

Age Profile of Loaded Cars Waiting Placement for Unloading

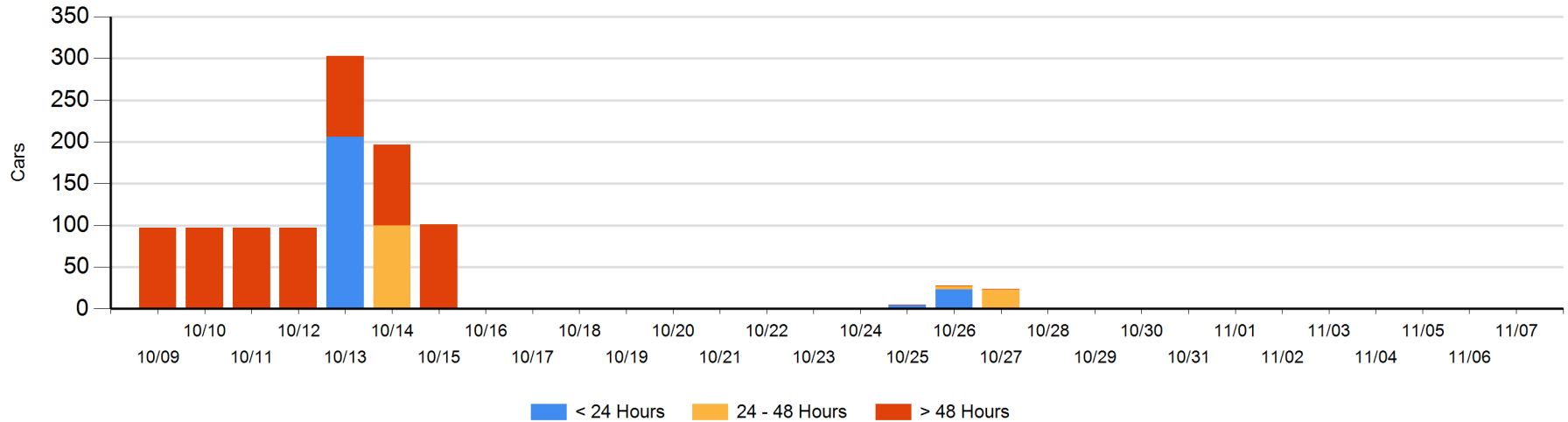
Today

	< 24 Hrs	24 - 48 Hrs	> 48-72 Hrs	> 72 Hrs	Total On Hand
CN					0

Change in Last 24 Hours

	< 24 Hrs	24-48 Hrs	48 - 72 Hrs	> 72 Hrs
CN				

Loaded Cars on Hand Prince Rupert Waiting for Placement - Last 30 Days All Railways



Port Terminal Status

Thunder Bay

Daily Activity for 11/7/2019

	Cars Arrived	Cars Received in Interchange	Cars Delivered in Interchange	Cars Placed for Unloading	Loads on Wheels at Destination As of 11/7/2019
CN	30			123	393
CP	6			370	462

Port Unloads

	11/07	11/06	Week To Date	Last Week
CN	6	123	529	716
CP	286	302	1,117	1,639

Age Profile of Loaded Cars Waiting Placement for Unloading

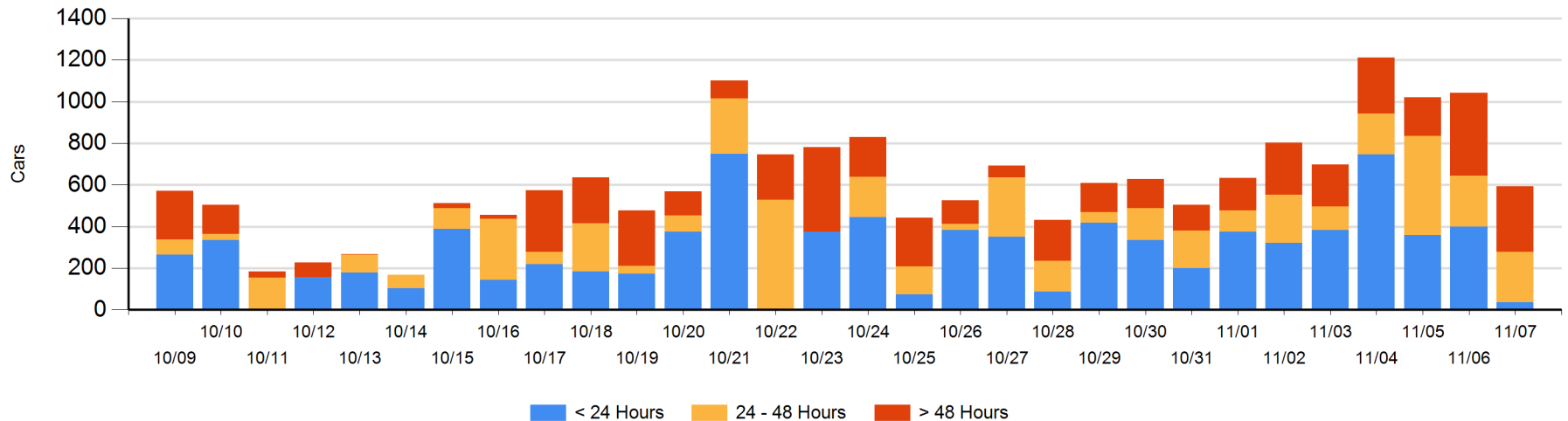
Today

	< 24 Hrs	24 - 48 Hrs	> 48-72 Hrs	> 72 Hrs	Total On Hand
CN	30	146	25	61	262
CP	6	95	89	140	330

Change in Last 24 Hours

	< 24 Hrs	24-48 Hrs	48 - 72 Hrs	> 72 Hrs
CN	-239	121	-16	41
CP	-124	-125	-96	-12

Loaded Cars on Hand Thunder Bay Waiting for Placement - Last 30 Days All Railways



Measurement Definitions

Loads on Wheels	<p>Count of loaded rail cars including all rail cars that have been released loaded at origin and have not been reported by the railway as unloaded at destination.</p> <p>Counts include all rail cars (hopper cars and boxcars) moving within a pipeline.</p>
Loads Not Moving	<p>Loaded rail cars for which the railways have not reported a movement event for 48 hours or more whether the rail car is at origin, enroute or at destination.</p>
Port Unloads	<p>Count of rail cars reported by railways as unloaded at the western port destinations of Vancouver, Prince Rupert and Thunder Bay.</p> <p>Unload counts include all rail cars (hopper cars and boxcars) unloaded by all receivers including major port terminals, transloaders and other receivers.</p>
Cars Arrived	<p>Count of rail cars reported as arrived at the destination railway terminal.</p>
Cars Received in Interchange	<p>Count of rail cars received in interchange by each railway within a destination railway terminal. Interchange activity is tracked for the Vancouver and Thunder Bay pipelines as applicable.</p>
Cars Delivered in Interchange	<p>Count of rail cars delivered in interchange by each railway within a destination railway terminal. Interchange activity is tracked for the Vancouver and Thunder Bay pipelines as applicable.</p>
Cars Placed for Unloading	<p>Count of rail cars reported by the railways as placed loaded at the receiver's facility for unloading.</p>
Loads on Wheels at Destination	<p>Count of rail cars that remain under load within the destination railway terminal including rail cars that have been reported as placed for unloading but not yet reported as unloaded.</p>
Waiting Placement for Unloading	<p>Count of rail cars that have been reported as arrived at the destination railway terminal but not reported as placed for unloading by the railway.</p> <p>For the Ports of Vancouver, Prince Rupert and Thunder Bay the count of rail cars waiting placement for unloading is categorized by age – i.e. the elapsed time from arrival at destination to the current report date.</p>