

SPEED READ

- Loads on wheels decreased overnight, marking a decline in CN volumes offset by higher CP volumes. On a net basis, volumes declined due to lower traffic across all corridors other than Prince Rupert.
- Network fluidity deteriorated overnight, led by an increase in idle car counts on CN by 69% (+364) offset by a decline in idle car counts on CP by 9% (-118). The total count of cars for 4+ days on both railways gained 39% (+231) overnight and have now increased for the third consecutive day - now at 829 cars.
- One day in Week 15 unloads now ahead of prior week's performance by 50 unloads, reflecting improved week over week performance at Vancouver and Prince Rupert offset by reduced unloads at Thunder Bay.

=====

Loads on Wheels

- Loads on wheels decreased 2% (-268) overnight, due to reduced traffic on CN offset by higher traffic on CP - combined total at 11,067 and 2% below the trailing 30-day average.
- On a net basis, the decline in loads on wheels reflects lower traffic across all corridors other than Prince Rupert.
- CN volumes decreased 7% (-418) overnight, with reduced volumes across all corridors other than Prince Rupert. System wide CN loads on wheels currently at 5,428 and 13% below the trailing 30-day average.
- CP volumes increased 3% (+177) overnight, driven by a rise in traffic in the Thunder Bay and Vancouver corridors. CP system wide loads on wheels currently at 5,441, the highest seen in the last 30 days, and 11% above the trailing 30-day average.
- Vancouver currently at 5,480, decreased 4% (-215) overnight, now 9% below the trailing 30-day average.
- The Prince Rupert pipeline currently at 1,902, increased 10% (+180) overnight, and 3% above the trailing 30-day average.
- Thunder Bay volumes declined for the third consecutive day, down 4% (-97) overnight - currently at 2,370 and 8% above the trailing 30-day average, with 73% of traffic moving on CP.

Hopper Car Rationing

- No hopper cars were rationed by either CN or CP in week 13.

Loads Not Moving

- **The count of cars not moving for 48+ hours gained 14% (+246) overnight, marking higher counts on CN offset by reduced counts on CP. Idle car counts currently at 2,021 and 4% above the trailing 30-day average.**
- CN
 - **The count of idle cars for 48+ hours increased 69% (+364) overnight - currently at 890 cars.**
 - The number of cars idle for 4+ days increased 55% (+64) overnight - now at 181 cars.
 - The count of cars not moving for 7+ days increased 79% (+30) overnight - currently at 68 cars.
 - Vancouver represents 35% of all idle cars.
 - In total 52% of all idle cars are dwelling at origin locations.
- CP
 - **CP idle car counts for 48+ hours decreased 9% (-118) overnight - now at 1,131 cars.**
 - The number of cars idle for 4+ days gained for the fourth consecutive day, up 35% (+167) overnight - currently at 648 cars, the highest seen in the last 30 days.

- The number of cars idle for 7+ days increased 26% (+15) overnight - currently at 72 cars.
- Vancouver accounts for 64% of all idle cars.
- In total 31% of all idle cars are dwelling at origin locations.

Port Performance

- CN and CP reported a total of 1,446 cars unloaded at the three major ports, 10% above the trailing 30-day average. One day in Week 15 unloads now ahead of last week's pace by 50 unloads, reflecting higher unloads at Vancouver and Prince Rupert offset by reduced unloads at Thunder Bay.
- Vancouver
 - 903 unloads reported by CN and CP at the Port of Vancouver; CN - 443 and CP - 460. One day in Week 15 unloads are tracking ahead of last week's performance by 100 unloads.
 - There are 1,400 cars on site at Vancouver with more than 1,050 cars arriving at the port in the last 24 hours.
 - CN and CP have more than 750 cars in British Columbia en route to Vancouver, with 250 cars at Kamloops and west, and 70% of traffic moving on CP.
- Prince Rupert
 - Prince Rupert reported 227 unloads, now ahead of last week's unloads after one day by more than 50 unloads.
 - Loads on wheels remain above 1,000 cars - now at 1,902 cars.
 - There are nearly 500 cars west of Jasper en route to Prince Rupert.
 - There are nearly 250 cars on site at Prince Rupert with 300 cars arriving at the port in the last 24 hours.
- Thunder Bay
 - 316 unloads were reported at Thunder Bay yesterday. One day in Week 15 unloads are tracking behind last week's pace by more than 100 unloads.
 - There are 1,150 cars on site at Thunder Bay with about 100 cars arriving at the port in the prior 24 hours.
 - There are 600 cars en route to Thunder Bay from Winnipeg and east.

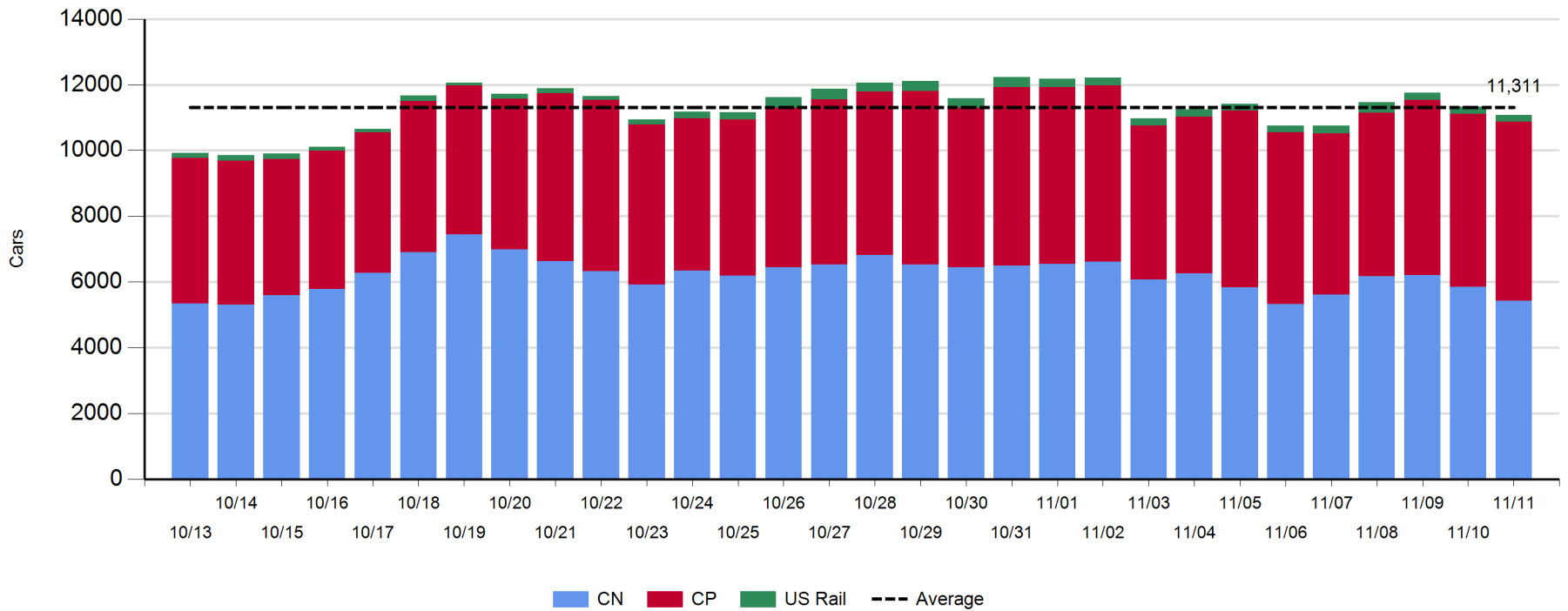
Daily Loads on Wheels - 11/11/2019

	E Canada	Prince Rupert	Thunder Bay	USA/MEX	Vancouver	Total
CN	733	1,902	650	174	1,969	5,428
CP	143		1,720	98	3,480	5,441
Short Line	1				31	32
US Rail				166		166
	877	1,902	2,370	438	5,480	11,067

Change in Loads on Wheels - Prior 24 Hours

	E Canada	Prince Rupert	Thunder Bay	USA/MEX	Vancouver	Total
CN	-39	180	-225	-78	-256	-418
CP	0		128	0	49	177
Short Line	1				-8	-7
US Rail				-20		-20
	-38	180	-97	-98	-215	-268

Loads on Wheels - Prior 30 Days

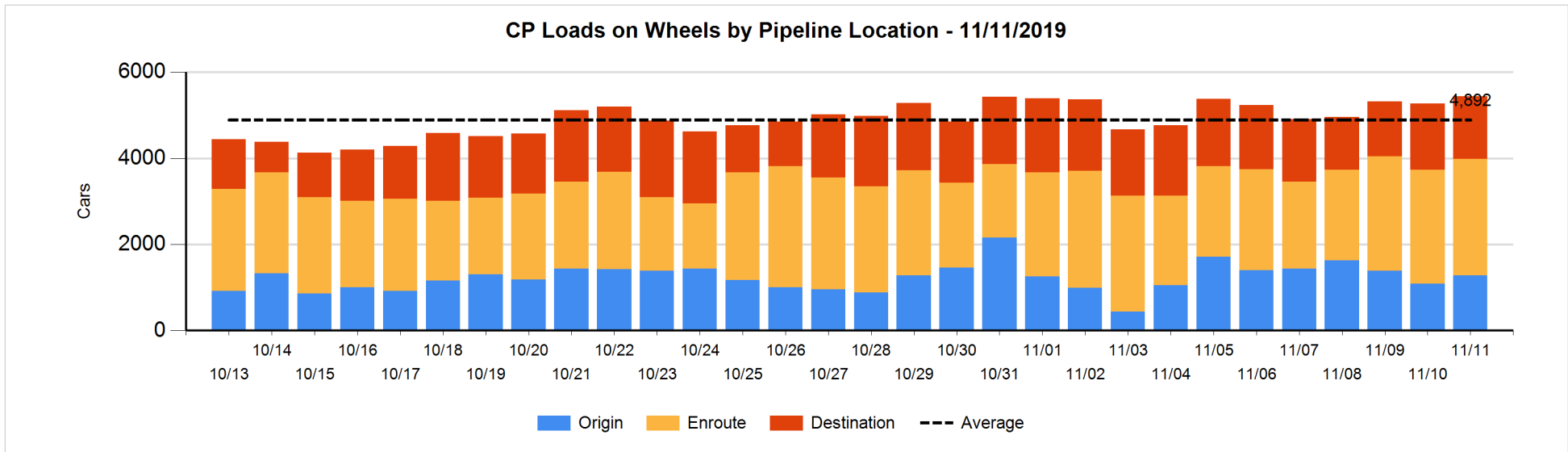
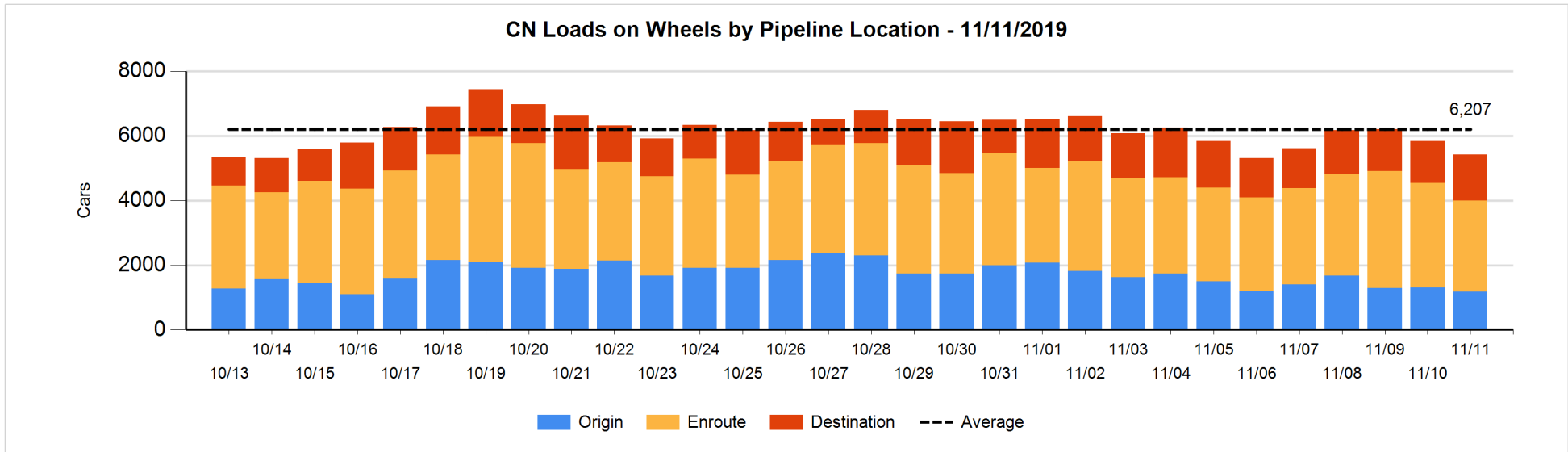


Daily Loads on Wheels By Pipeline Location - 11/11/2019

	E Canada	Prince Rupert	Thunder Bay	USA/MEX	Vancouver	Total
CN						
Origin	5	711		6	453	1,175
Enroute	621	960	205	131	912	2,829
Destination	107	231	445	37	604	1,424
	733	1,902	650	174	1,969	5,428
CP						
Origin			338		944	1,282
Enroute	143		685	98	1,781	2,707
Destination			697		755	1,452
	143		1,720	98	3,480	5,441
US Rail / Short Line						
Origin						
Enroute				57		57
Destination	1			109	31	141
	1			166	31	198

Change in Daily Loads on Wheels By Pipeline Location - Prior 24 Hours

	E Canada	Prince Rupert	Thunder Bay	USA/MEX	Vancouver	Total
CN						
Origin	-21	206		-1	-319	-135
Enroute	-46	-96	-3	-94	-168	-407
Destination	28	70	-222	17	231	124
	-39	180	-225	-78	-256	-418
CP						
Origin			-29		227	198
Enroute	0		171	0	-114	57
Destination			-14		-64	-78
	0		128	0	49	177
US Rail / Short Line						
Origin						
Enroute				-41		-41
Destination	1			21	-8	14
	1			-20	-8	-27

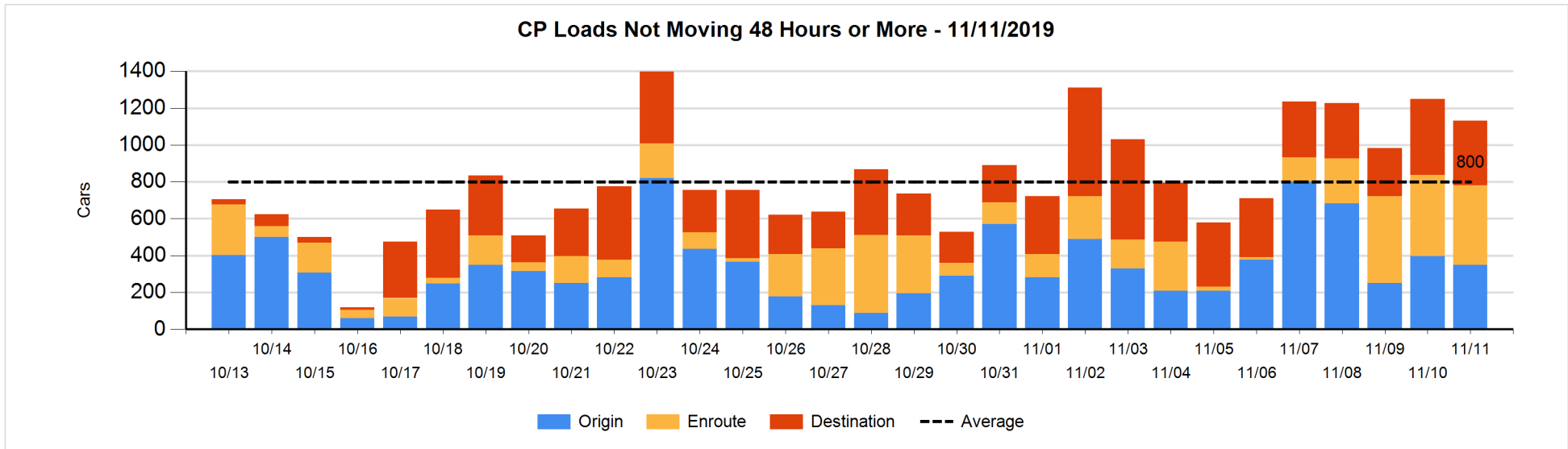
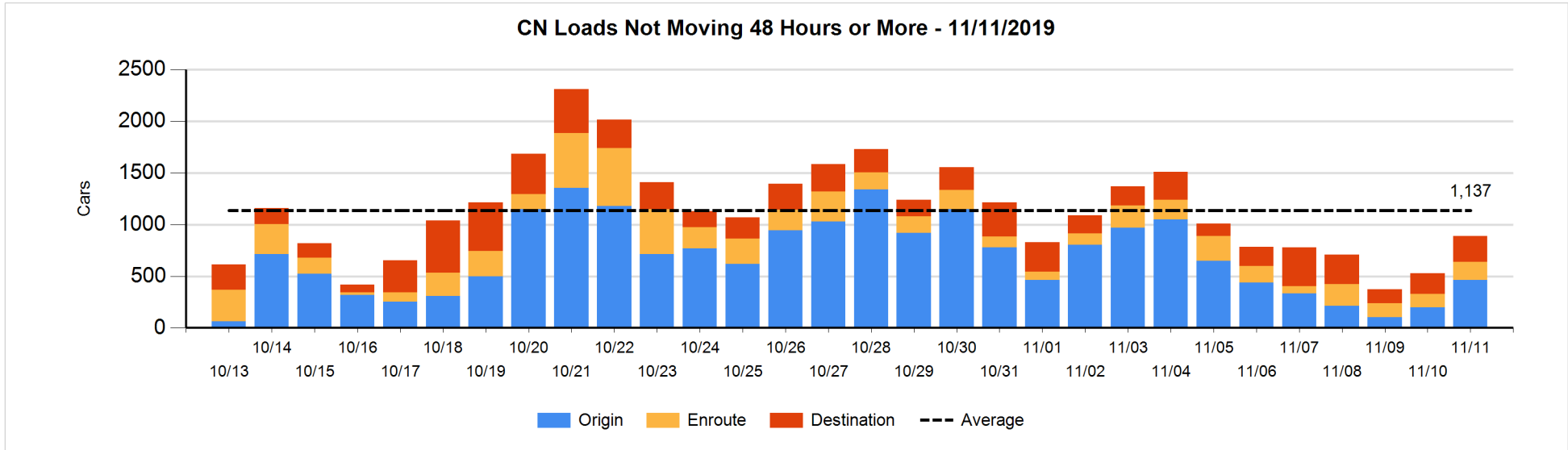


Loads Not Moving 48 Hours or More - 11/11/2019

	E Canada	Prince Rupert	Thunder Bay	USA/MEX	Vancouver	Total
CN						
Origin		205		6	251	462
Enroute	34	75	1	20	48	178
Destination	33		195	13	9	250
	67	280	196	39	308	890
CP						
Origin			119		230	349
Enroute	53		2	1	375	431
Destination			230		121	351
	53		351	1	726	1131
US Rail / Short Line						
Origin						
Enroute				11		11
Destination				36	16	52
				47	16	63

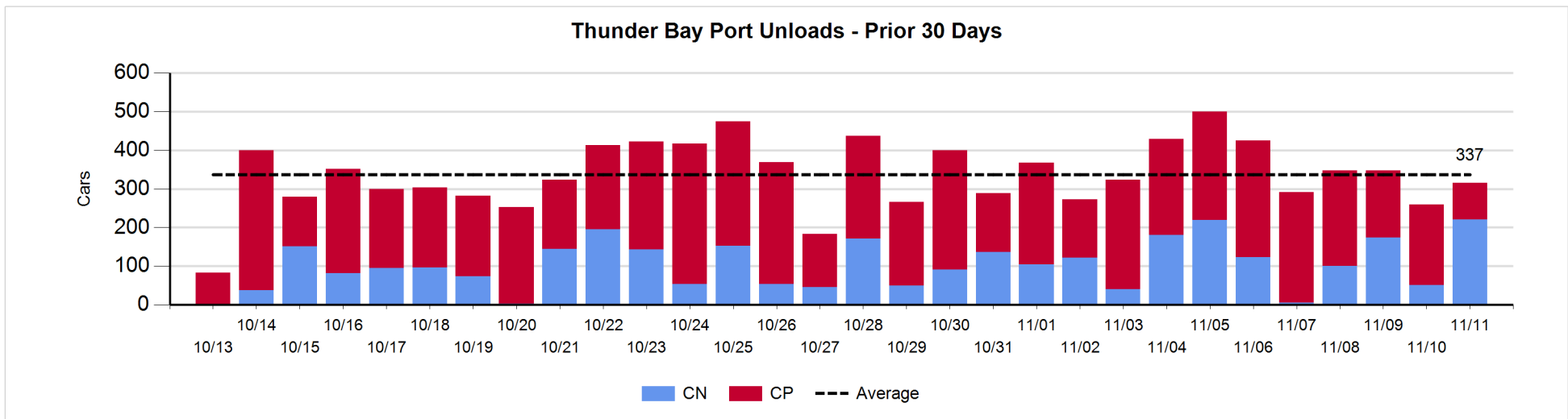
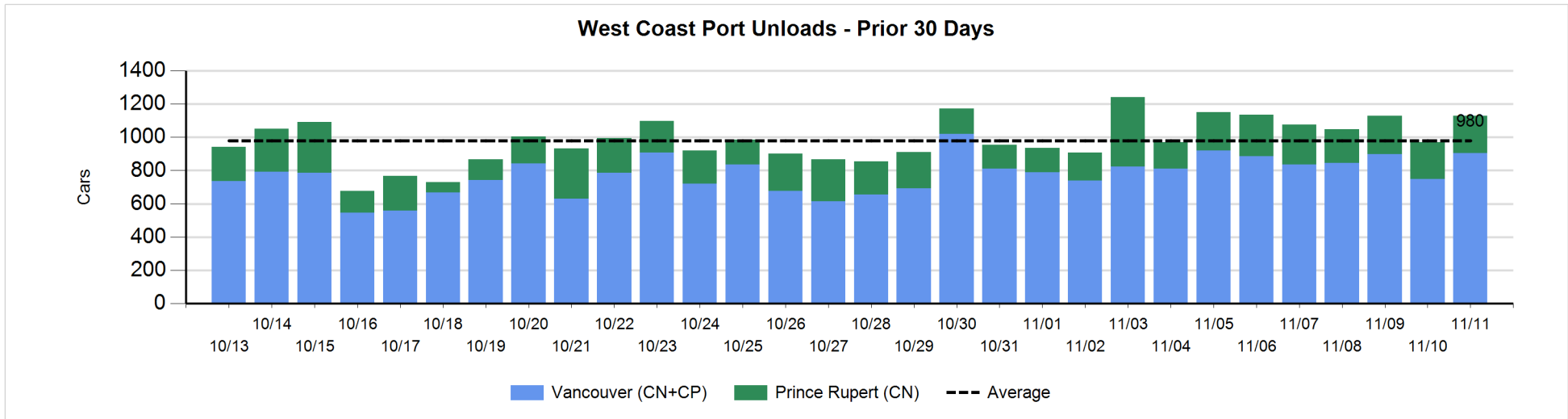
Change in Loads Not Moving 48 Hours or More - 11/11/2019

	E Canada	Prince Rupert	Thunder Bay	USA/MEX	Vancouver	Total
CN						
Origin	-26	205		-1	85	263
Enroute	-25	73	0	3	0	51
Destination	12		45	-3	-4	50
	-39	278	45	-1	81	364
CP						
Origin			78		-126	-48
Enroute	52		0	0	-61	-9
Destination			62		-123	-61
	52		140	0	-310	-118
US Rail / Short Line						
Origin						
Enroute				-49		-49
Destination				-25	-10	-35
				-74	-10	-84



Port Unloads - 11/11/2019

	Prince Rupert	Vancouver	West Coast Total	Thunder Bay	Total
CN	227	443	670	221	891
CP		460	460	95	555
	227	903	1,130	316	1,446



Port Terminal Status

Vancouver

Daily Activity for 11/11/2019

	Cars Arrived	Cars Received in Interchange	Cars Delivered in Interchange	Cars Placed for Unloading	Loads on Wheels at Destination As of 11/11/2019
CN	594	241	55	513	604
CP	475	53	252	424	755
SRY	2	13		12	31

Port Unloads

	11/11	11/10	Week To Date	Last Week
CN	443	319	443	2,600
CP	460	431	460	3,344
SRY	12		12	42

Age Profile of Loaded Cars Waiting Placement for Unloading

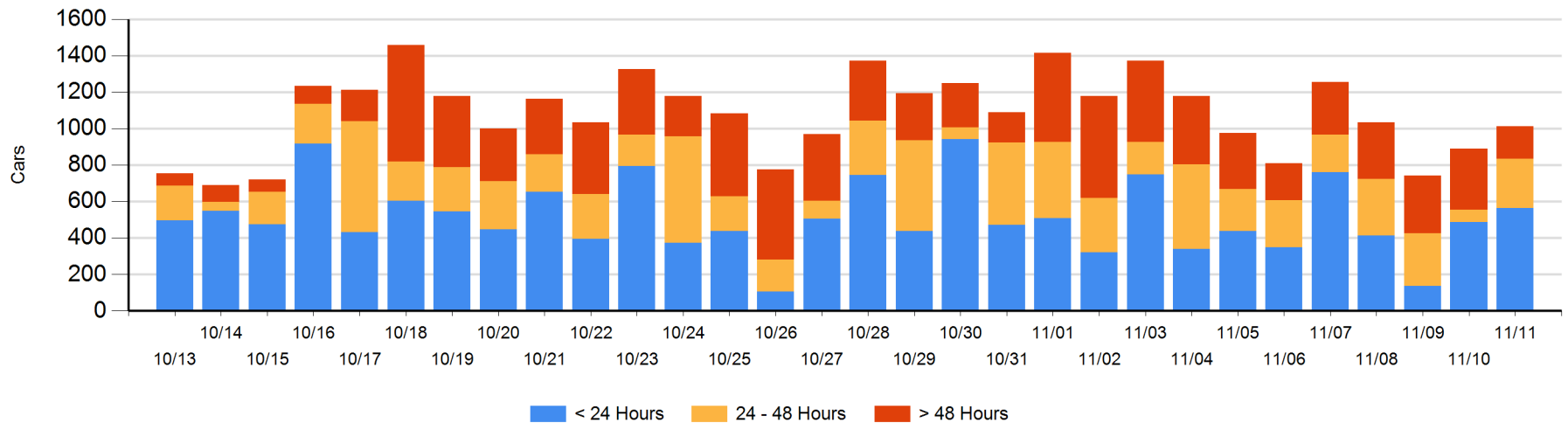
Today

	< 24 Hrs	24 - 48 Hrs	> 48-72 Hrs	> 72 Hrs	Total On Hand
CN	305	86	6	20	417
CP	258	183	22	132	595
SRY	1				1

Change in Last 24 Hours

	< 24 Hrs	24-48 Hrs	48 - 72 Hrs	> 72 Hrs
CN	130	42	-19	-10
CP	-54	159	-93	-33
SRY	1			

Loaded Cars on Hand Vancouver Waiting for Placement - Last 30 Days All Railways



Port Terminal Status

Prince Rupert

Daily Activity for 11/11/2019

	Cars Arrived	Cars Received in Interchange	Cars Delivered in Interchange	Cars Placed for Unloading	Loads on Wheels at Destination As of 11/11/2019
CN	297			297	231

Port Unloads

	11/11	11/10	Week To Date	Last Week
CN	227	220	227	1,533

Age Profile of Loaded Cars Waiting Placement for Unloading

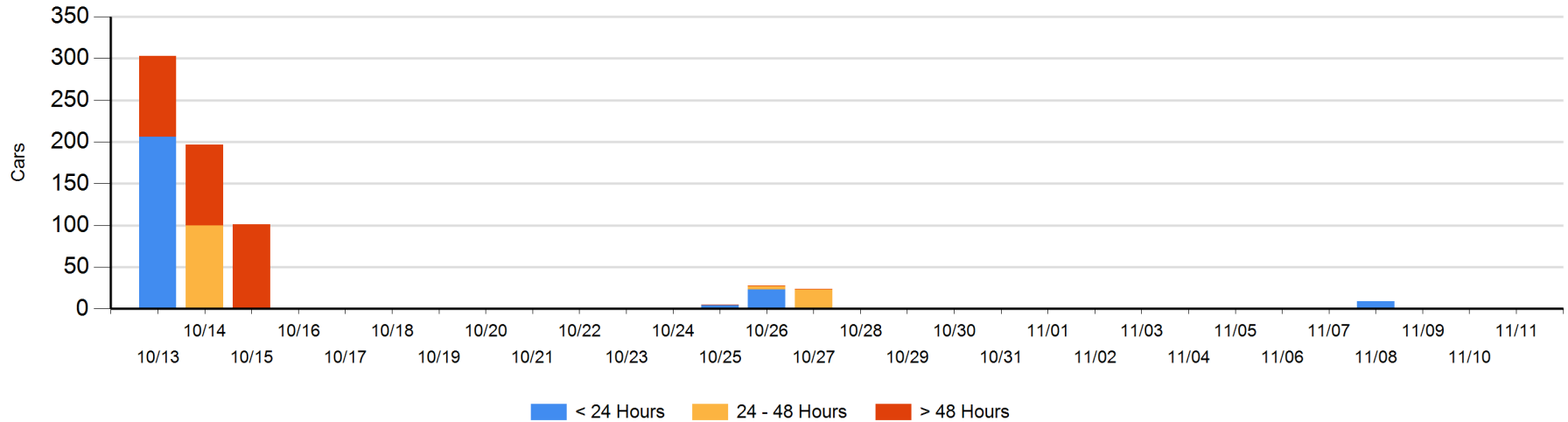
Today

	< 24 Hrs	24 - 48 Hrs	> 48-72 Hrs	> 72 Hrs	Total On Hand
CN					0

Change in Last 24 Hours

	< 24 Hrs	24-48 Hrs	48 - 72 Hrs	> 72 Hrs
CN				

Loaded Cars on Hand Prince Rupert Waiting for Placement - Last 30 Days All Railways



Port Terminal Status

Thunder Bay

Daily Activity for 11/11/2019

	Cars Arrived	Cars Received in Interchange	Cars Delivered in Interchange	Cars Placed for Unloading	Loads on Wheels at Destination As of 11/11/2019
CN	3				445
CP	77			85	697

Port Unloads

	11/11	11/10	Week To Date	Last Week
CN	221	51	221	855
CP	95	209	95	1,747

Age Profile of Loaded Cars Waiting Placement for Unloading

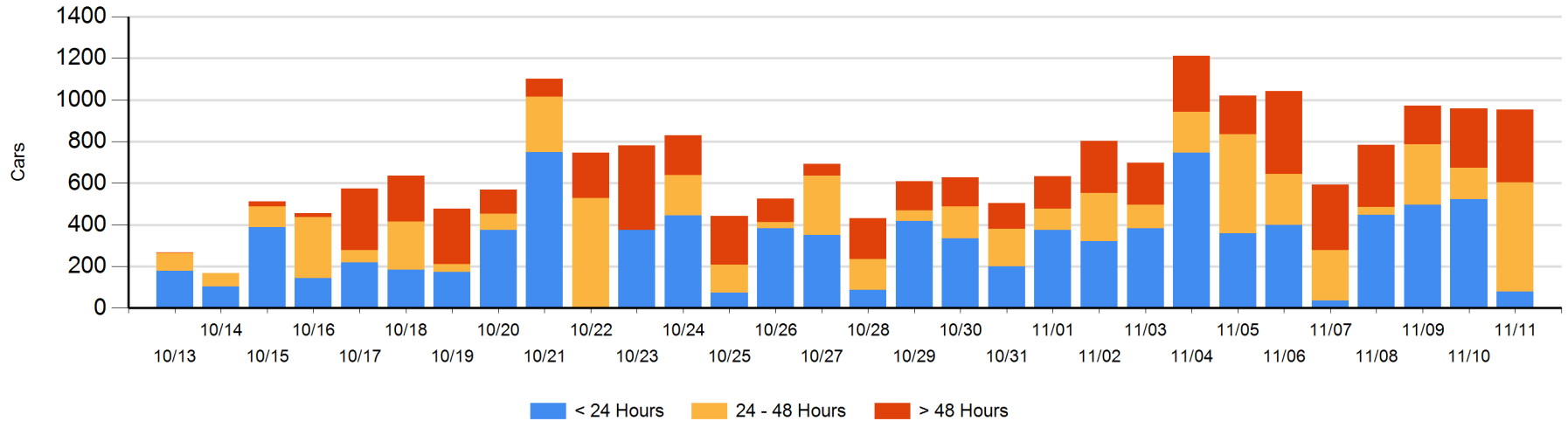
Today

	< 24 Hrs	24 - 48 Hrs	> 48-72 Hrs	> 72 Hrs	Total On Hand
CN	3	193	2	137	335
CP	77	331	64	146	618

Change in Last 24 Hours

	< 24 Hrs	24-48 Hrs	48 - 72 Hrs	> 72 Hrs
CN	-190	191	-104	106
CP	-254	182	-47	111

Loaded Cars on Hand Thunder Bay Waiting for Placement - Last 30 Days All Railways



Measurement Definitions

Loads on Wheels	<p>Count of loaded rail cars including all rail cars that have been released loaded at origin and have not been reported by the railway as unloaded at destination.</p> <p>Counts include all rail cars (hopper cars and boxcars) moving within a pipeline.</p>
Loads Not Moving	<p>Loaded rail cars for which the railways have not reported a movement event for 48 hours or more whether the rail car is at origin, enroute or at destination.</p>
Port Unloads	<p>Count of rail cars reported by railways as unloaded at the western port destinations of Vancouver, Prince Rupert and Thunder Bay.</p> <p>Unload counts include all rail cars (hopper cars and boxcars) unloaded by all receivers including major port terminals, transloaders and other receivers.</p>
Cars Arrived	<p>Count of rail cars reported as arrived at the destination railway terminal.</p>
Cars Received in Interchange	<p>Count of rail cars received in interchange by each railway within a destination railway terminal. Interchange activity is tracked for the Vancouver and Thunder Bay pipelines as applicable.</p>
Cars Delivered in Interchange	<p>Count of rail cars delivered in interchange by each railway within a destination railway terminal. Interchange activity is tracked for the Vancouver and Thunder Bay pipelines as applicable.</p>
Cars Placed for Unloading	<p>Count of rail cars reported by the railways as placed loaded at the receiver's facility for unloading.</p>
Loads on Wheels at Destination	<p>Count of rail cars that remain under load within the destination railway terminal including rail cars that have been reported as placed for unloading but not yet reported as unloaded.</p>
Waiting Placement for Unloading	<p>Count of rail cars that have been reported as arrived at the destination railway terminal but not reported as placed for unloading by the railway.</p> <p>For the Ports of Vancouver, Prince Rupert and Thunder Bay the count of rail cars waiting placement for unloading is categorized by age – i.e. the elapsed time from arrival at destination to the current report date.</p>