

SPEED READ

- Loads on wheels decreased overnight, reflecting reduced CP traffic offset by an increase in CN volumes. On a net basis, volumes fell due to lower traffic across all corridors other than Vancouver.
- Network fluidity improved overnight, led by a decline in idle car counts on both CN and CP by 20% (-177) and 18% (-206), respectively. The total count of cars for 4+ days on both railways gained 17% (+142) overnight and have now increased for the fourth consecutive day - presently at 975 cars.
- Two days in Week 15 unloads now behind prior week's performance by more than 450 unloads, marking lower unloads at Thunder Bay and Vancouver offset by improved week over week performance at Prince Rupert.

Loads on Wheels

- Loads on wheels decreased 3% (-309) overnight and have now decreased for the third consecutive day, due to reduced traffic on CP offset by higher traffic on CN - combined total at 10,797 and 5% below the trailing 30-day average.
- On a net basis, the decline in loads on wheels indicates lower traffic across all corridors other than Vancouver.
- CN volumes gained slightly by 1% (+69) overnight, with higher traffic in the Vancouver corridor offset by lower traffic in the Prince Rupert, Thunder Bay and E. Canada corridors. System wide CN loads on wheels presently at 5,502 and 11% below the trailing 30-day average.
- CP volumes fell 6% (-340) overnight, driven by a decline in volumes across all corridors other than the USA / MEX corridor which is unchanged. CP system wide loads on wheels now at 5,135 and 4% above the trailing 30-day average.
- Vancouver presently at 5,667, gained 3% (+148) overnight, now 6% below the trailing 30-day average.
- The Prince Rupert pipeline now at 1,783, fell 6% (-119) overnight, and 3% below the trailing 30-day average.
- Thunder Bay volumes decreased 11% (-260) overnight and have now decreased for the fourth consecutive day - presently at 2,110 and 4% below the trailing 30-day average, with 73% of traffic moving on CP.

Hopper Car Rationing

- No hopper cars were rationed by either CN or CP in week 13.

Loads Not Moving

- **The count of cars not moving for 48+ hours declined 19% (-383) overnight, marking reduced counts on both CN and CP. Idle car counts presently at 1,675 and 14% below the trailing 30-day average.**
- CN
 - **The count of idle cars for 48+ hours declined 20% (-177) overnight - presently at 717 cars.**
 - The number of cars idle for 4+ days gained for the third consecutive day, up 20% (+37) overnight - presently at 222 cars.
 - The count of cars not moving for 7+ days declined 40% (-27) overnight - currently at 41 cars.
 - Vancouver represents 52% of all idle cars.
 - In total 58% of all idle cars are dwelling at origin locations.
- CP
 - **CP idle car counts for 48+ hours declined 18% (-206) overnight - now at 958 cars.**
 - The number of cars idle for 4+ days increased for the fifth consecutive day, up 16% (+105) overnight - currently at 753 cars, the highest seen in the last 30 days.

- The number of cars idle for 7+ days increased 161% (+116) overnight and have now increased for the third consecutive day - presently at 188 cars.
- Vancouver accounts for 65% of all idle cars.
- In total 14% of all idle cars are dwelling at origin locations.

Port Performance

- CN and CP reported a total of 1,122 cars unloaded at the three major ports, now 15% below the trailing 30-day average. Two days in Week 15 unloads now behind last week's pace by more than 450 unloads, marking lower unloads at Thunder Bay and Vancouver offset by higher unloads at Prince Rupert.
- Vancouver
 - 634 unloads reported by CN and CP at the Port of Vancouver; CN - 223 and CP - 411. Two days in Week 15 unloads are tracking behind last week's performance by 200 unloads.
 - There are more than 1,400 cars on site at Vancouver with around 700 cars arriving at the port in the last 24 hours.
 - CN and CP have 1,000 cars in British Columbia en route to Vancouver, with more than 250 cars at Kamloops and west, and 74% of traffic moving on CP.
- Prince Rupert
 - Prince Rupert reported 228 unloads, now ahead of last week's unloads after two days by more than 50 unloads.
 - Loads on wheels remain above 1,000 cars - presently at 1,783 cars.
 - There are more than 350 cars west of Jasper en route to Prince Rupert.
 - There are 350 cars on site at Prince Rupert with 350 cars arriving at the port in the last 24 hours.
- Thunder Bay
 - 260 unloads were reported at Thunder Bay yesterday. Two days in Week 15 unloads are tracking behind last week's pace by 350 unloads.
 - There are fewer than 1,300 cars on site at Thunder Bay with 400 cars arriving at the port in the prior 24 hours.
 - There are 200 cars en route to Thunder Bay from Winnipeg and east.

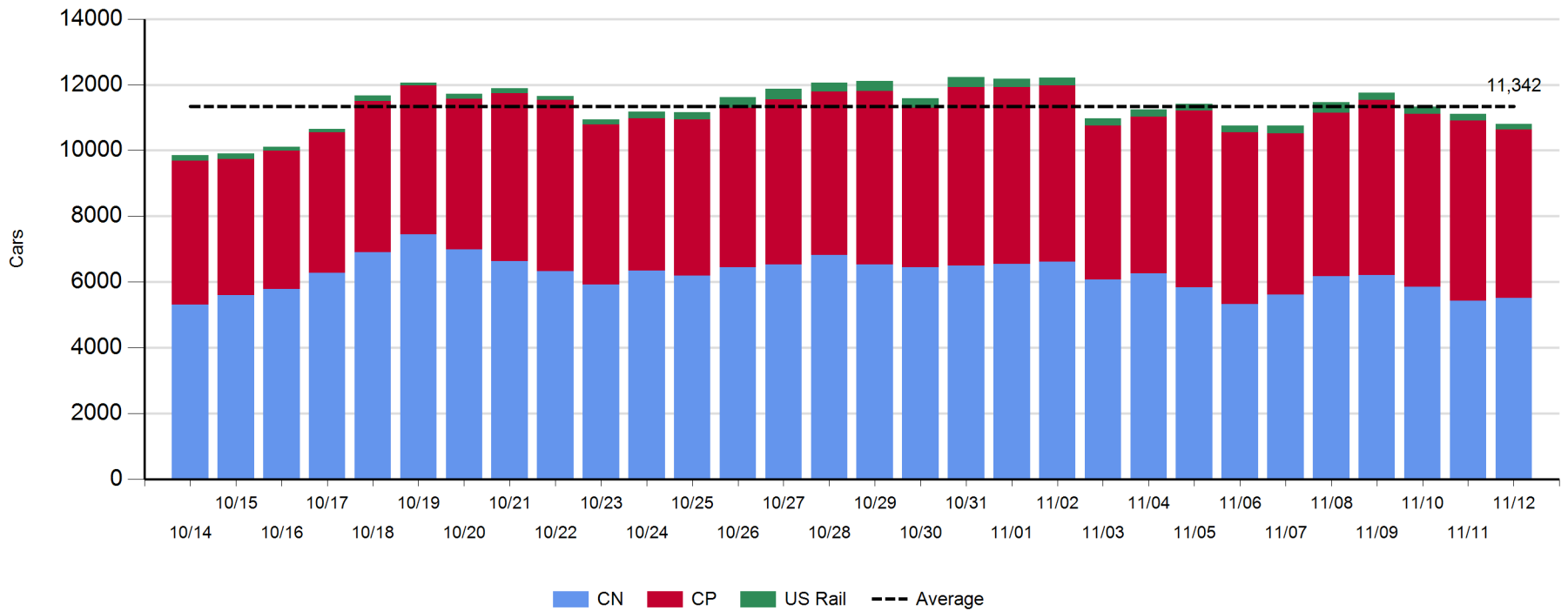
Daily Loads on Wheels - 11/12/2019

	E Canada	Prince Rupert	Thunder Bay	USA/MEX	Vancouver	Total
CN	702	1,783	567	174	2,276	5,502
CP	140		1,543	98	3,354	5,135
Short Line	11				37	48
US Rail				112		112
	853	1,783	2,110	384	5,667	10,797

Change in Loads on Wheels - Prior 24 Hours

	E Canada	Prince Rupert	Thunder Bay	USA/MEX	Vancouver	Total
CN	-31	-119	-83	0	302	69
CP	-3		-177	0	-160	-340
Short Line	10				6	16
US Rail				-54		-54
	-24	-119	-260	-54	148	-309

Loads on Wheels - Prior 30 Days

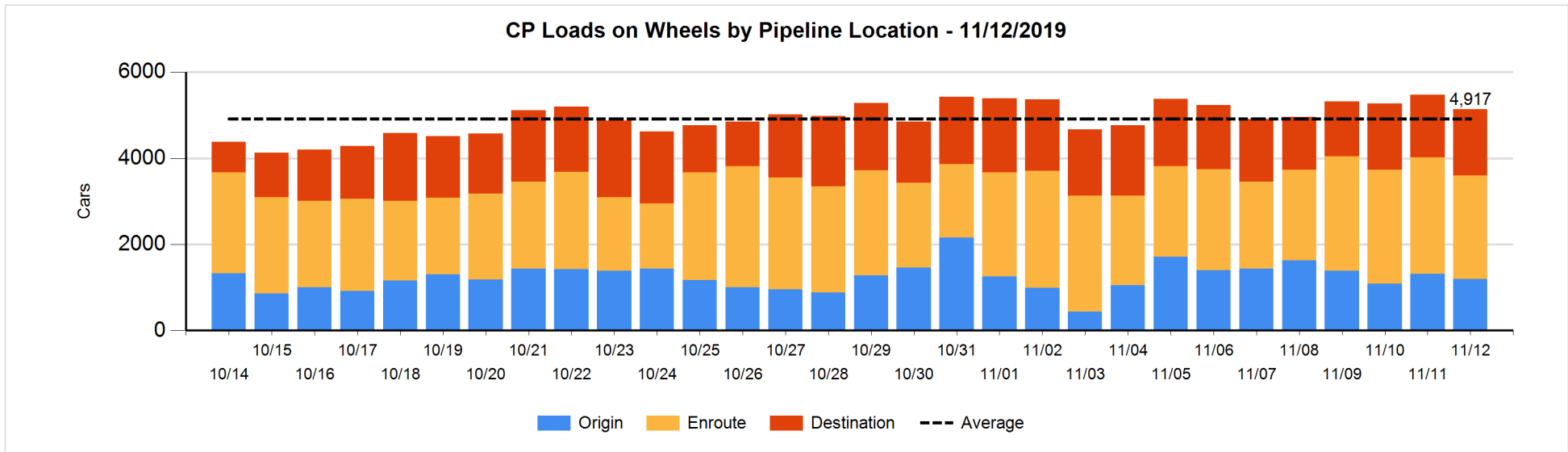
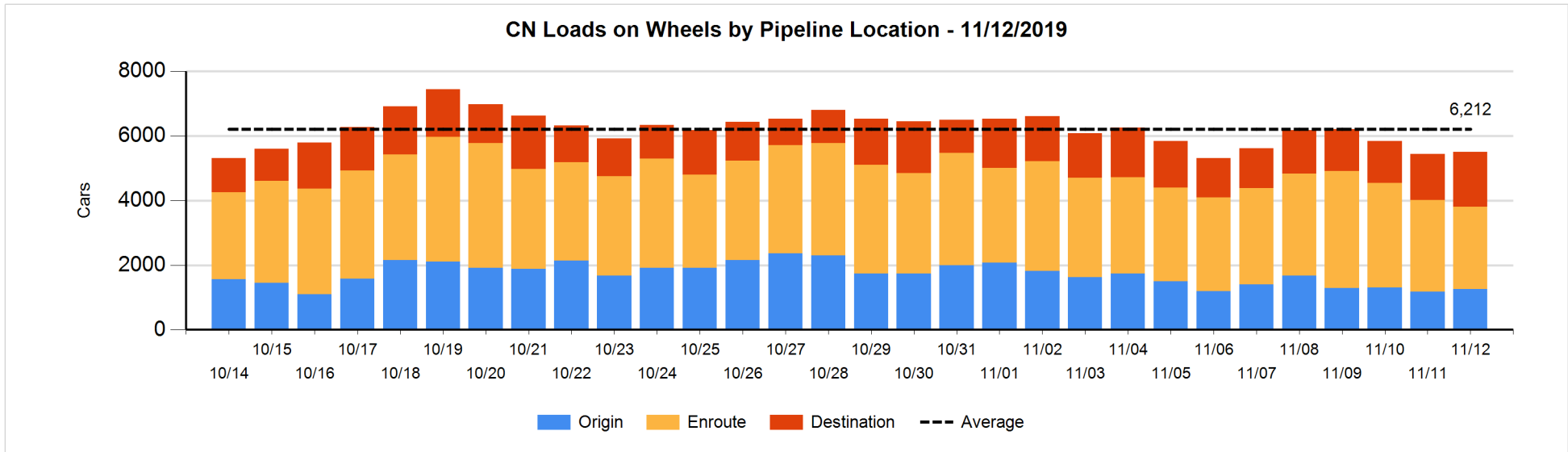


Daily Loads on Wheels By Pipeline Location - 11/12/2019

	E Canada	Prince Rupert	Thunder Bay	USA/MEX	Vancouver	Total
CN						
Origin	31	514		40	669	1,254
Enroute	516	913	106	101	911	2,547
Destination	155	356	461	33	696	1,701
	702	1,783	567	174	2,276	5,502
CP						
Origin	1		226	3	962	1,192
Enroute	139		495	76	1,699	2,409
Destination			822	19	693	1,534
	140		1,543	98	3,354	5,135
US Rail / Short Line						
Origin						
Enroute				24		24
Destination	11			88	37	136
	11			112	37	160

Change in Daily Loads on Wheels By Pipeline Location - Prior 24 Hours

	E Canada	Prince Rupert	Thunder Bay	USA/MEX	Vancouver	Total
CN						
Origin	26	-197		34	212	75
Enroute	-105	-47	-99	-30	-2	-283
Destination	48	125	16	-4	92	277
	-31	-119	-83	0	302	69
CP						
Origin	1		-112	3	-16	-124
Enroute	-4		-190	-22	-82	-298
Destination			125	19	-62	82
	-3		-177	0	-160	-340
US Rail / Short Line						
Origin						
Enroute				-33		-33
Destination	10			-21	6	-5
	10			-54	6	-38

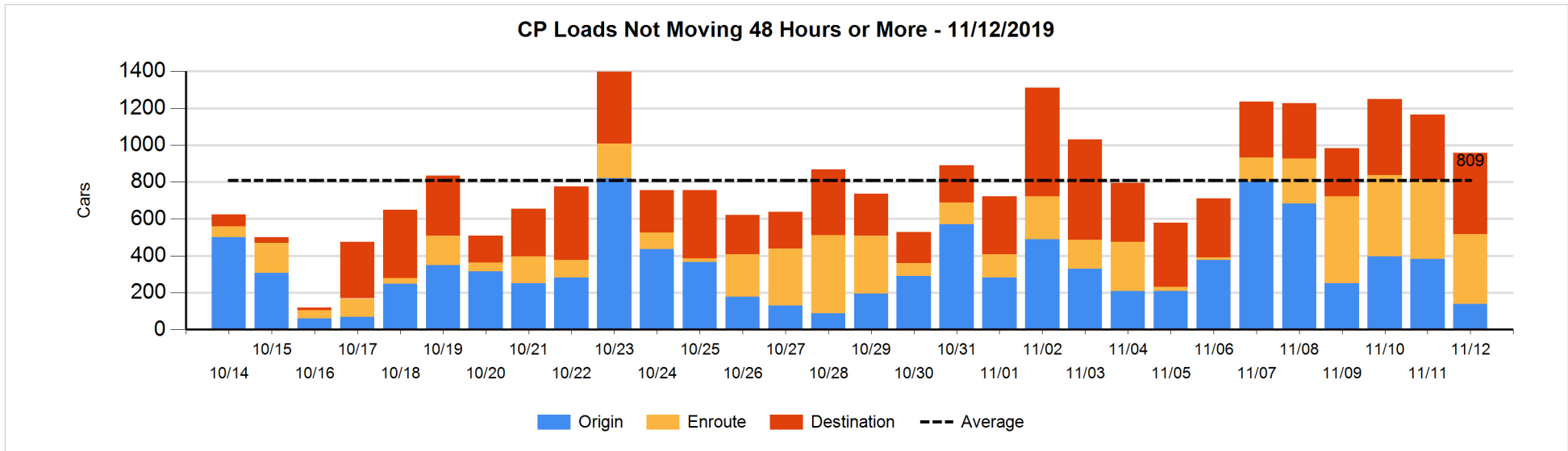
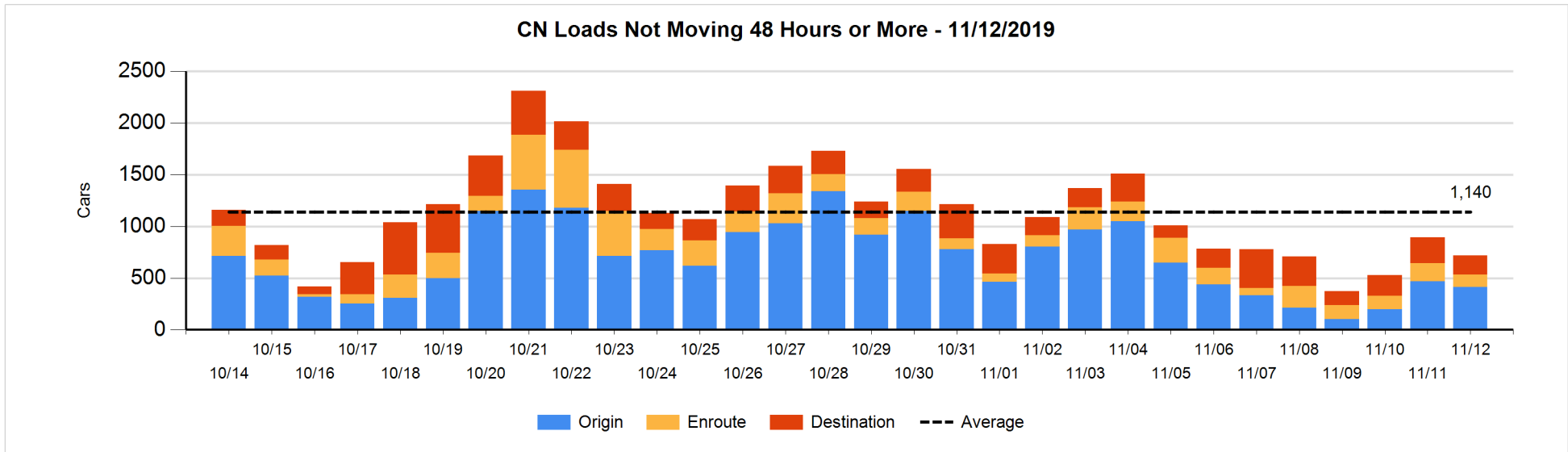


Loads Not Moving 48 Hours or More - 11/12/2019

	E Canada	Prince Rupert	Thunder Bay	USA/MEX	Vancouver	Total
CN						
Origin		99		6	308	413
Enroute	42	13	1	15	50	121
Destination	45		115	10	13	183
	87	112	116	31	371	717
CP						
Origin			7		131	138
Enroute	4		5	1	370	380
Destination			319		121	440
	4		331	1	622	958
US Rail / Short Line						
Origin						
Enroute				11		11
Destination				25	20	45
				36	20	56

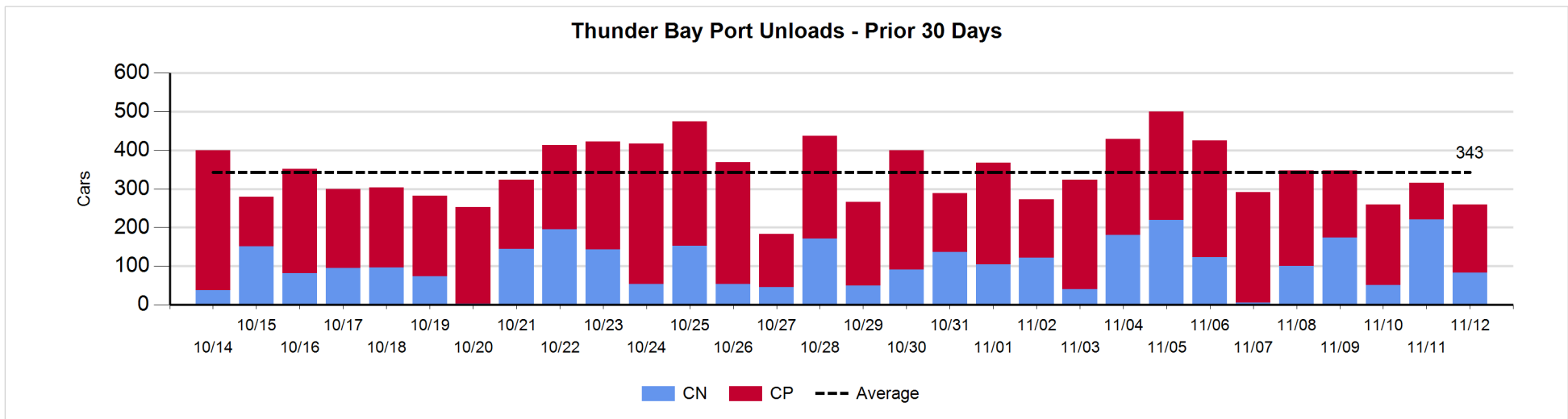
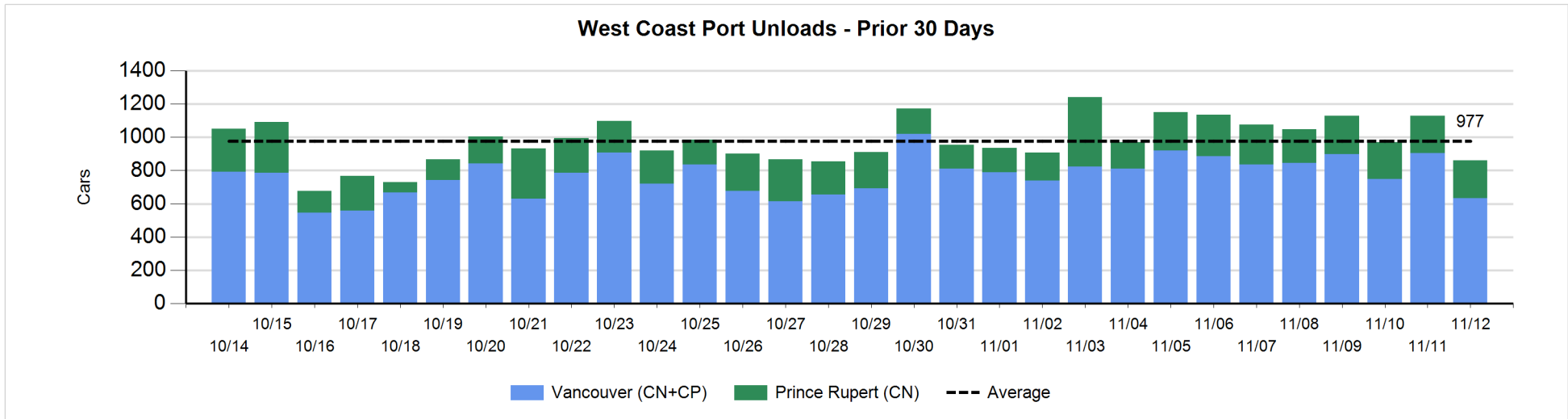
Change in Loads Not Moving 48 Hours or More - 11/12/2019

	E Canada	Prince Rupert	Thunder Bay	USA/MEX	Vancouver	Total
CN						
Origin		-106		0	53	-53
Enroute	8	-62	0	-5	2	-57
Destination	12		-80	-3	4	-67
	20	-168	-80	-8	59	-177
CP						
Origin			-112		-132	-244
Enroute	-49		3	0	-5	-51
Destination			89		0	89
	-49		-20	0	-137	-206
US Rail / Short Line						
Origin						
Enroute				0		0
Destination				-11	4	-7
				-11	4	-7



Port Unloads - 11/12/2019

	Prince Rupert	Vancouver	West Coast Total	Thunder Bay	Total
CN	228	223	451	83	534
CP		411	411	177	588
	228	634	862	260	1,122



Port Terminal Status

Vancouver

Daily Activity for 11/12/2019

	Cars Arrived	Cars Received in Interchange	Cars Delivered in Interchange	Cars Placed for Unloading	Loads on Wheels at Destination As of 11/12/2019
CN	260	219	103	517	696
CP	425	96	232	463	693
SRY		20		3	37

Port Unloads

	11/12	11/11	Week To Date	Last Week
CN	223	443	666	2,600
CP	411	460	871	3,344
SRY	2	12	14	42

Age Profile of Loaded Cars Waiting Placement for Unloading

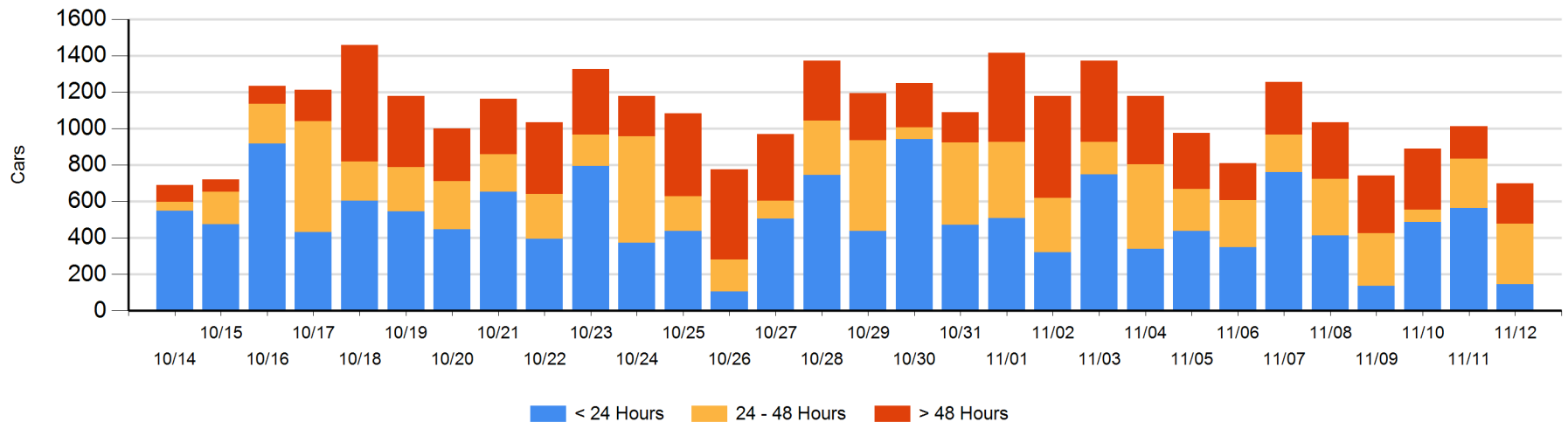
Today

	< 24 Hrs	24 - 48 Hrs	> 48-72 Hrs	> 72 Hrs	Total On Hand
CN		175	1	24	200
CP	146	158	81	115	500
SRY					0

Change in Last 24 Hours

	< 24 Hrs	24-48 Hrs	48 - 72 Hrs	> 72 Hrs
CN	-319	89	-5	4
CP	-98	-25	59	-17
SRY	-1			

Loaded Cars on Hand Vancouver Waiting for Placement - Last 30 Days All Railways



Port Terminal Status

Prince Rupert

Daily Activity for 11/12/2019

	Cars Arrived	Cars Received in Interchange	Cars Delivered in Interchange	Cars Placed for Unloading	Loads on Wheels at Destination As of 11/12/2019
CN	352			323	356

Port Unloads

	11/12	11/11	Week To Date	Last Week
CN	228	227	455	1,533

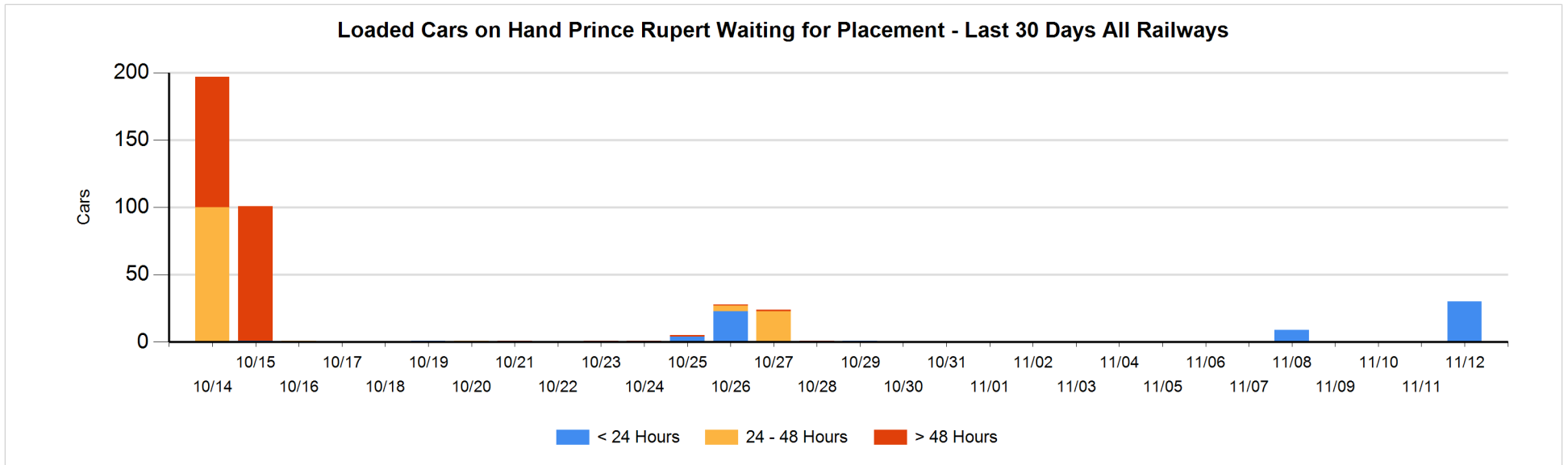
Age Profile of Loaded Cars Waiting Placement for Unloading

Today

	< 24 Hrs	24 - 48 Hrs	> 48-72 Hrs	> 72 Hrs	Total On Hand
CN	30				30

Change in Last 24 Hours

	< 24 Hrs	24-48 Hrs	48 - 72 Hrs	> 72 Hrs
CN	30			



Port Terminal Status

Thunder Bay

Daily Activity for 11/12/2019

	Cars Arrived	Cars Received in Interchange	Cars Delivered in Interchange	Cars Placed for Unloading	Loads on Wheels at Destination As of 11/12/2019
CN	99			221	461
CP	302			268	822

Port Unloads

	11/12	11/11	Week To Date	Last Week
CN	83	221	304	855
CP	177	95	272	1,747

Age Profile of Loaded Cars Waiting Placement for Unloading

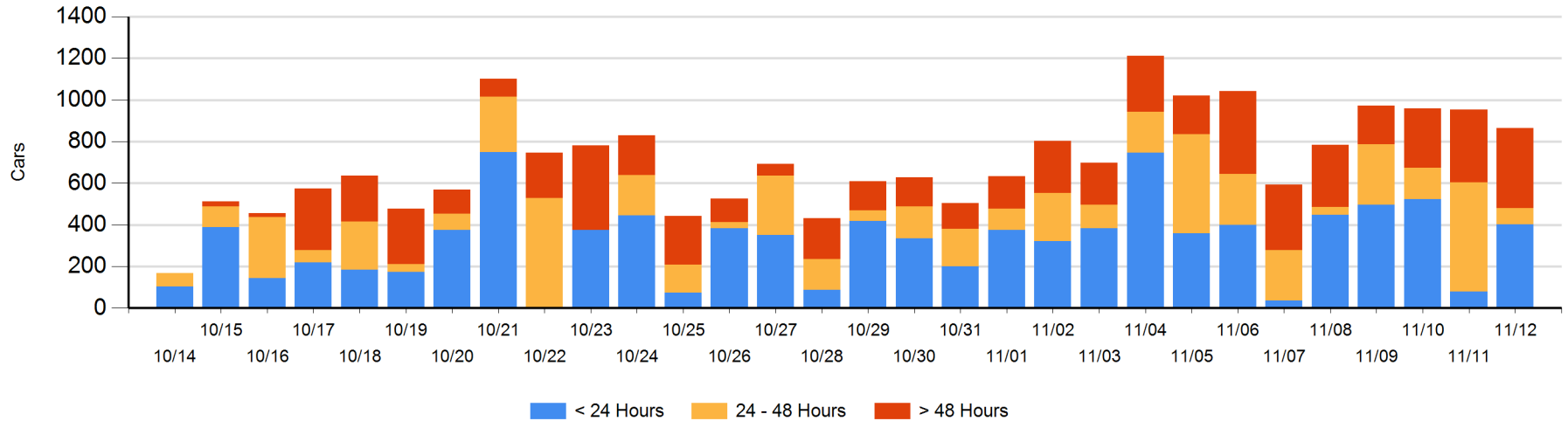
Today

	< 24 Hrs	24 - 48 Hrs	> 48-72 Hrs	> 72 Hrs	Total On Hand
CN	99	3	76	35	213
CP	302	76	81	193	652

Change in Last 24 Hours

	< 24 Hrs	24-48 Hrs	48 - 72 Hrs	> 72 Hrs
CN	96	-190	74	-102
CP	225	-255	17	47

Loaded Cars on Hand Thunder Bay Waiting for Placement - Last 30 Days All Railways



Measurement Definitions

Loads on Wheels	<p>Count of loaded rail cars including all rail cars that have been released loaded at origin and have not been reported by the railway as unloaded at destination.</p> <p>Counts include all rail cars (hopper cars and boxcars) moving within a pipeline.</p>
Loads Not Moving	<p>Loaded rail cars for which the railways have not reported a movement event for 48 hours or more whether the rail car is at origin, enroute or at destination.</p>
Port Unloads	<p>Count of rail cars reported by railways as unloaded at the western port destinations of Vancouver, Prince Rupert and Thunder Bay.</p> <p>Unload counts include all rail cars (hopper cars and boxcars) unloaded by all receivers including major port terminals, transloaders and other receivers.</p>
Cars Arrived	<p>Count of rail cars reported as arrived at the destination railway terminal.</p>
Cars Received in Interchange	<p>Count of rail cars received in interchange by each railway within a destination railway terminal. Interchange activity is tracked for the Vancouver and Thunder Bay pipelines as applicable.</p>
Cars Delivered in Interchange	<p>Count of rail cars delivered in interchange by each railway within a destination railway terminal. Interchange activity is tracked for the Vancouver and Thunder Bay pipelines as applicable.</p>
Cars Placed for Unloading	<p>Count of rail cars reported by the railways as placed loaded at the receiver's facility for unloading.</p>
Loads on Wheels at Destination	<p>Count of rail cars that remain under load within the destination railway terminal including rail cars that have been reported as placed for unloading but not yet reported as unloaded.</p>
Waiting Placement for Unloading	<p>Count of rail cars that have been reported as arrived at the destination railway terminal but not reported as placed for unloading by the railway.</p> <p>For the Ports of Vancouver, Prince Rupert and Thunder Bay the count of rail cars waiting placement for unloading is categorized by age – i.e. the elapsed time from arrival at destination to the current report date.</p>