

**SPEED READ**

- Loads on wheels fell slightly overnight, reflecting a decline in CN traffic offset by higher CP volumes. On a net basis, volumes declined due to reduced traffic in the Vancouver, Prince Rupert and USA/MEX corridors offset by higher volumes in the Thunder Bay and E. Canada corridors.
- Network fluidity was unchanged overnight, reflecting a decline in idle car counts on CN by 10% (-75) offset by a rise in idle car counts on CP by 7% (+73). The total count of cars for 4+ days on both railways declined 33% (-319) overnight - presently at 656 cars.
- Three days in Week 15 unloads now behind prior week's performance by 400 unloads, reflecting reduced unloads at Thunder Bay and Vancouver offset by improved week over week performance at Prince Rupert.

=====

**Loads on Wheels**

- Loads on wheels fell slightly by 1% (-134) overnight and have now decreased for the fourth consecutive day, due to reduced traffic on CN offset by higher traffic on CP - combined total at 10,750 and 5% below the trailing 30-day average.
- On a net basis, the decline in loads on wheels reflects reduced traffic in the Vancouver, Prince Rupert and USA/MEX corridors offset by higher volumes in the Thunder Bay and E. Canada corridors.
- CN volumes decreased 3% (-174) overnight, with reduced volumes in the Vancouver, Prince Rupert and Thunder Bay corridors offset by higher traffic in the E. Canada and USA/MEX corridors. System wide CN loads on wheels currently at 5,328 and 14% below the trailing 30-day average.
- CP volumes gained slightly by 1% (+47) overnight, driven by an increase in traffic in the Thunder Bay corridor offset by a decline in volumes in the Vancouver and USA/MEX corridors. CP system wide loads on wheels presently at 5,269 and 6% above the trailing 30-day average.
- Vancouver currently at 5,480, decreased 5% (-274) overnight, now 9% below the trailing 30-day average.
- The Prince Rupert pipeline currently at 1,709, decreased 4% (-74) overnight, and 8% below the trailing 30-day average.
- Thunder Bay volumes gained 11% (+232) overnight - now at 2,342 and 6% above the trailing 30-day average, with 78% of traffic moving on CP.

**Hopper Car Rationing**

- No hopper cars were rationed by either CN or CP in week 13.

**Loads Not Moving**

- **The count of cars not moving for 48+ hours was unchanged overnight, reflecting reduced counts on CN offset by higher counts on CP. Idle car counts now at 1,760 and 10% below the trailing 30-day average.**
- CN
  - **The count of idle cars for 48+ hours decreased 10% (-75) overnight - now at 642 cars.**
  - The number of cars idle for 4+ days increased 2% (+4) overnight and have now increased for the fourth consecutive day - now at 226 cars.
  - The count of cars not moving for 7+ days decreased 10% (-4) overnight - currently at 37 cars.
  - Vancouver represents 22% of all idle cars.
  - In total 66% of all idle cars are dwelling at origin locations.
- CP
  - **CP idle car counts for 48+ hours increased 7% (+73) overnight - now at 1,118 cars.**
  - The number of cars idle for 4+ days declined 43% (-323) overnight - currently at 430 cars.
  - The number of cars idle for 7+ days increased for the fourth consecutive day, up 31% (+58) overnight - now at 246 cars, the highest seen in the last

30 days.

- Vancouver accounts for 62% of all idle cars.
- In total 44% of all idle cars are dwelling at origin locations.

### **Port Performance**

- CN and CP reported a total of 1,629 cars unloaded at the three major ports, 23% above the trailing 30-day average. Three days in Week 15 unloads now behind last week's pace by 400 unloads, reflecting reduced unloads at Thunder Bay and Vancouver offset by higher unloads at Prince Rupert.
- Vancouver
  - 1,001 unloads reported by CN and CP at the Port of Vancouver; CN - 548 and CP - 453. Three days in Week 15 unloads are tracking behind last week's performance by more than 50 unloads.
  - There are 1,250 cars on site at Vancouver with more than 800 cars arriving at the port in the last 24 hours.
  - CN and CP have more than 1,050 cars in British Columbia en route to Vancouver, with 700 cars at Kamloops and west, and 53% of traffic moving on CP.
- Prince Rupert
  - Prince Rupert reported 224 unloads, now ahead of last week's unloads after three days by fewer than 50 unloads.
  - Loads on wheels remain above 1,000 cars - now at 1,709 cars.
  - There are more than 250 cars west of Jasper en route to Prince Rupert.
  - There are 450 cars on site at Prince Rupert with more than 300 cars arriving at the port in the last 24 hours.
- Thunder Bay
  - 404 unloads were reported at Thunder Bay yesterday. Three days in Week 15 unloads are tracking behind last week's pace by more than 350 unloads.
  - There are more than 1,050 cars on site at Thunder Bay with 200 cars arriving at the port in the prior 24 hours.
  - There are more than 400 cars en route to Thunder Bay from Winnipeg and east.

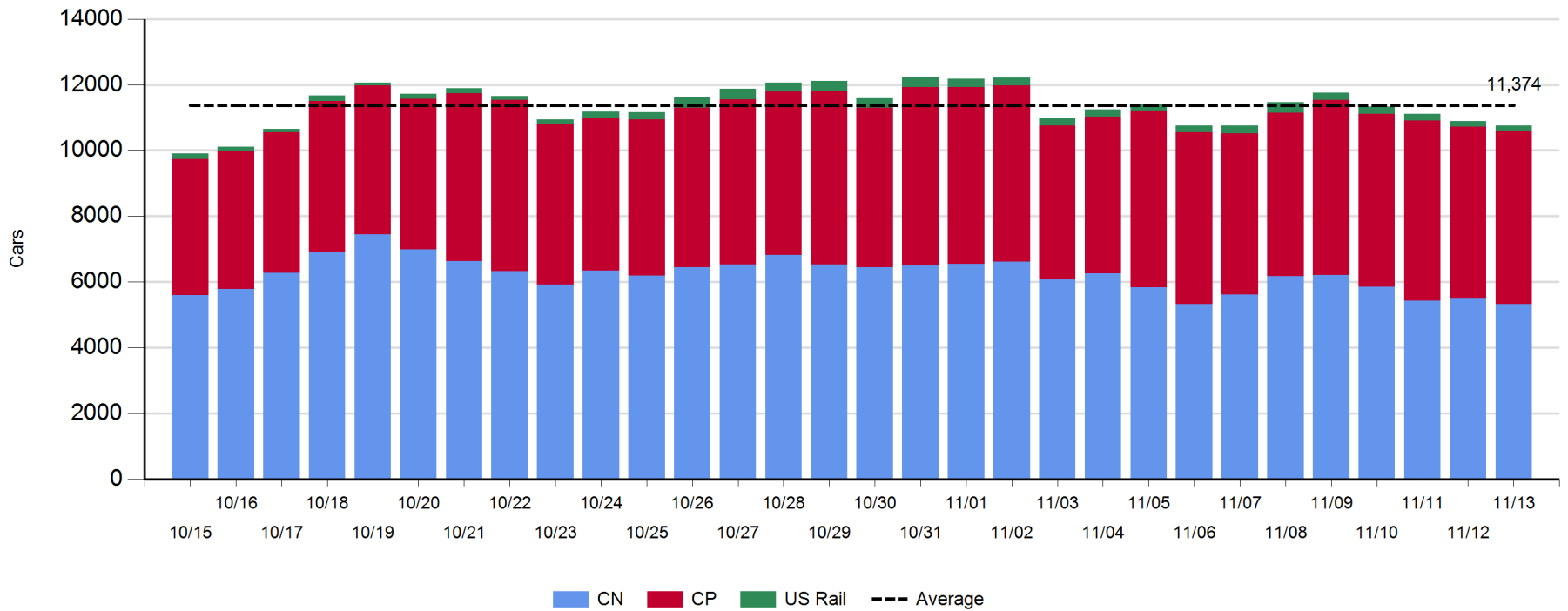
**Daily Loads on Wheels - 11/13/2019**

	E Canada	Prince Rupert	Thunder Bay	USA/MEX	Vancouver	Total
CN	733	1,709	507	198	2,181	5,328
CP	140		1,835	33	3,261	5,269
Short Line					38	38
US Rail				115		115
	873	1,709	2,342	346	5,480	10,750

**Change in Loads on Wheels - Prior 24 Hours**

	E Canada	Prince Rupert	Thunder Bay	USA/MEX	Vancouver	Total
CN	31	-74	-60	24	-95	-174
CP	0		292	-65	-180	47
Short Line	-11				1	-10
US Rail				3		3
	20	-74	232	-38	-274	-134

**Loads on Wheels - Prior 30 Days**

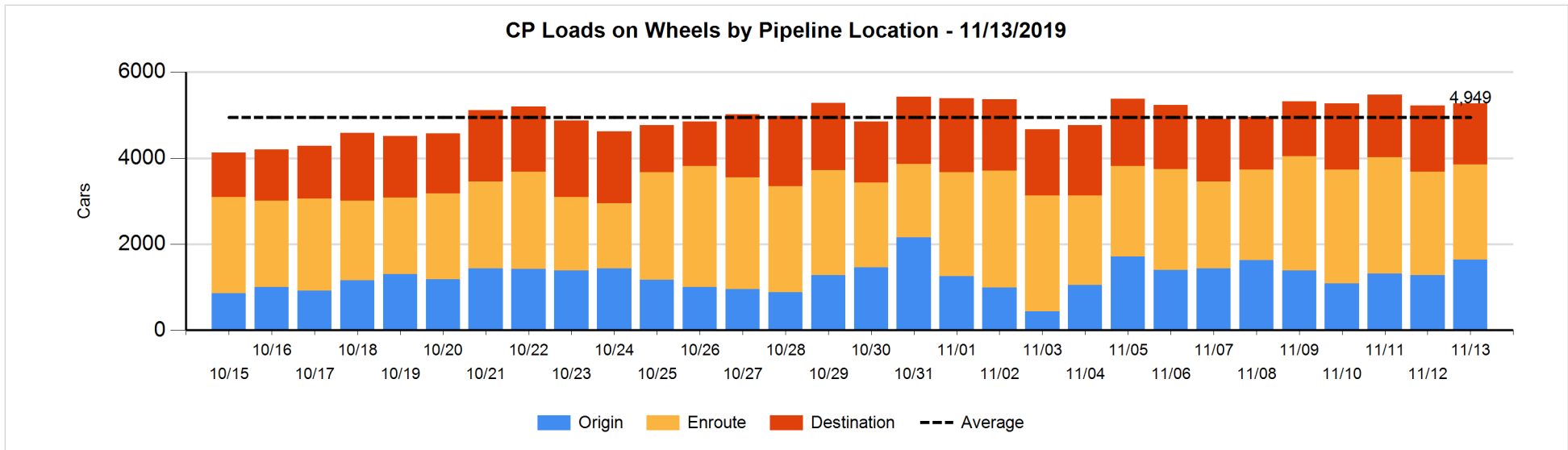
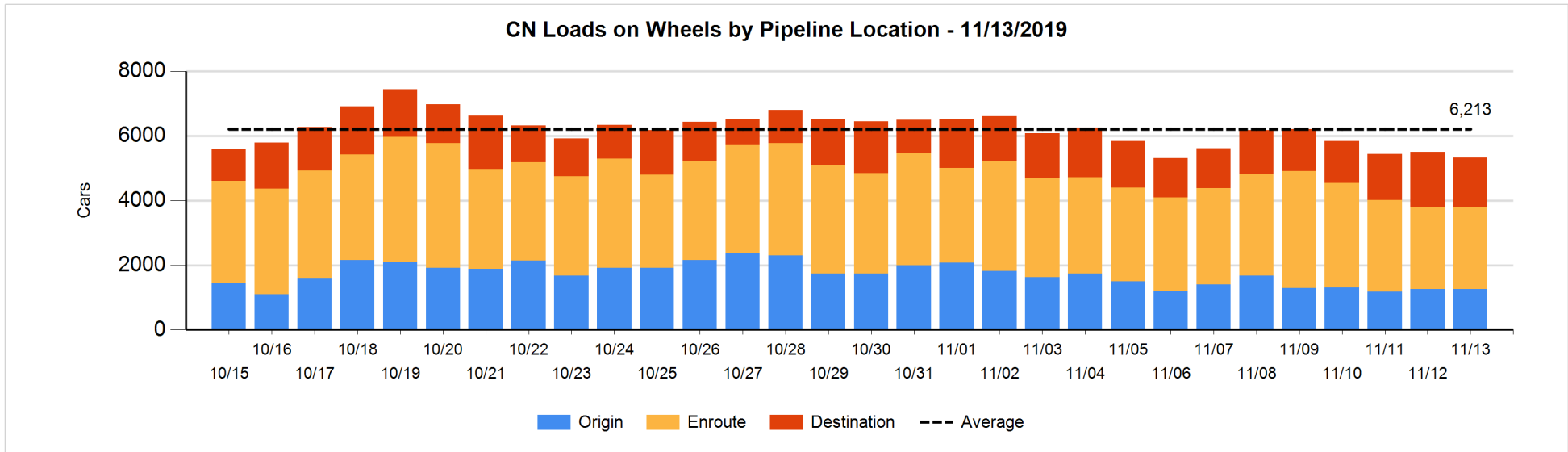


**Daily Loads on Wheels By Pipeline Location - 11/13/2019**

	E Canada	Prince Rupert	Thunder Bay	USA/MEX	Vancouver	Total
CN						
Origin	184	561	16	61	434	1,256
Enroute	380	696	100	103	1,255	2,534
Destination	169	452	391	34	492	1,538
	733	1,709	507	198	2,181	5,328
CP						
Origin	1		637	3	1,000	1,641
Enroute	139		515	26	1,533	2,213
Destination			683	4	728	1,415
	140		1,835	33	3,261	5,269
US Rail / Short Line						
Origin						
Enroute				24		24
Destination				91	38	129
				115	38	153

**Change in Daily Loads on Wheels By Pipeline Location - Prior 24 Hours**

	E Canada	Prince Rupert	Thunder Bay	USA/MEX	Vancouver	Total
CN						
Origin	153	47	16	21	-235	2
Enroute	-136	-217	-6	2	344	-13
Destination	14	96	-70	1	-204	-163
	31	-74	-60	24	-95	-174
CP						
Origin	0		411	0	-49	362
Enroute	0		20	-50	-166	-196
Destination			-139	-15	35	-119
	0		292	-65	-180	47
US Rail / Short Line						
Origin						
Enroute				0		0
Destination	-11			3	1	-7
	-11			3	1	-7

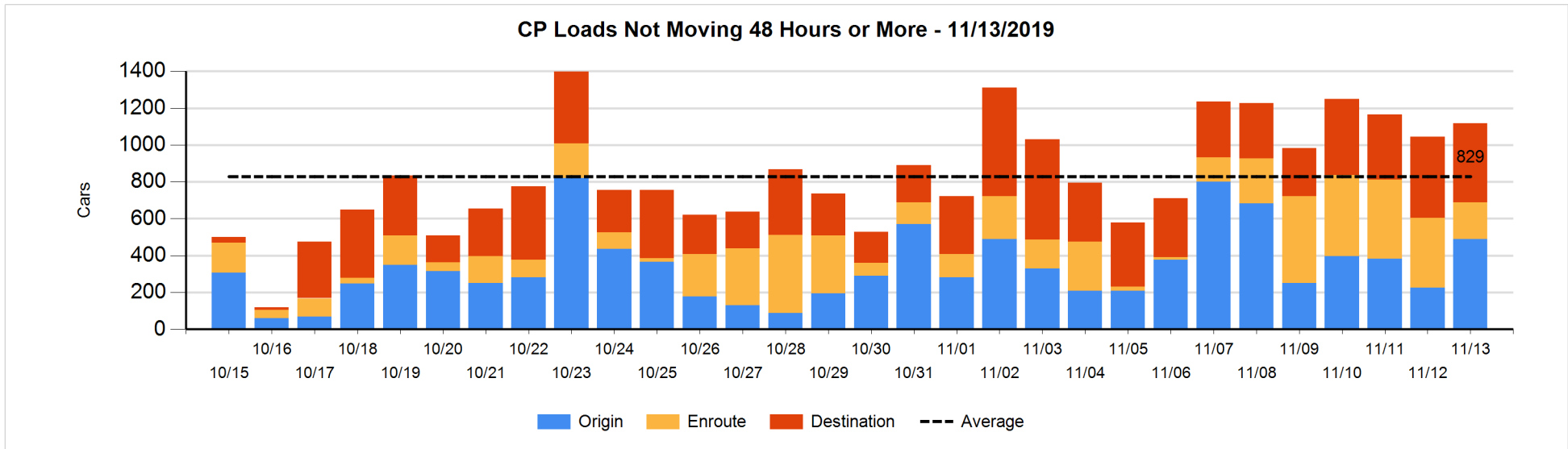
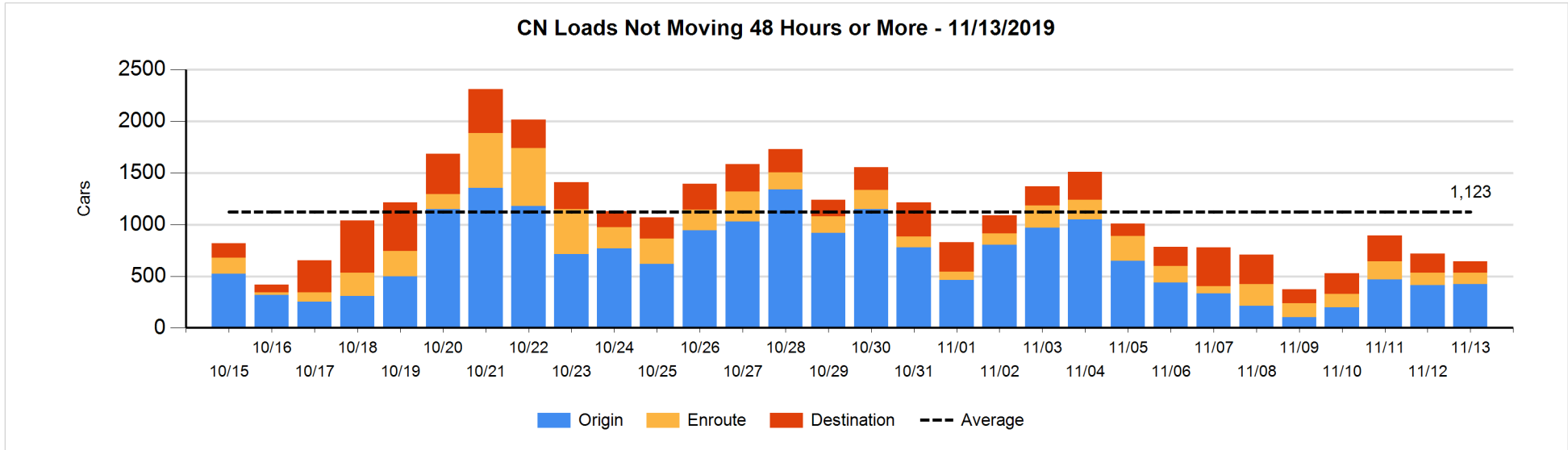


**Loads Not Moving 48 Hours or More - 11/13/2019**

	E Canada	Prince Rupert	Thunder Bay	USA/MEX	Vancouver	Total
<b>CN</b>						
Origin	5	307		6	106	424
Enroute	50	12	1	15	29	107
Destination	26		57	19	9	111
	81	319	58	40	144	642
<b>CP</b>						
Origin			115		375	490
Enroute	21		37	1	139	198
Destination			254		176	430
	21		406	1	690	1118
<b>US Rail / Short Line</b>						
Origin						
Enroute				11		11
Destination				43	23	66
				54	23	77

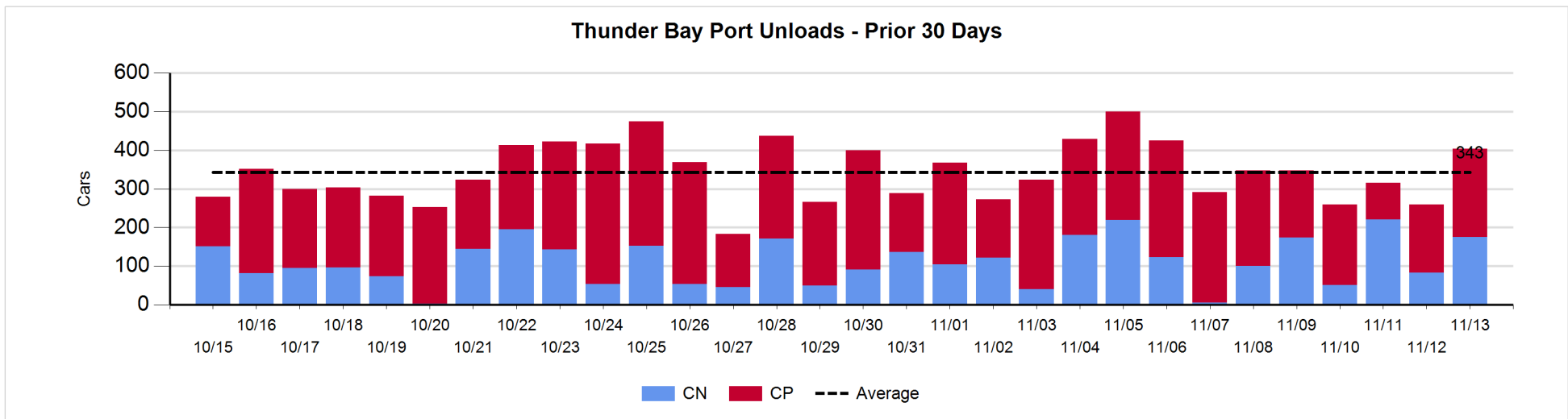
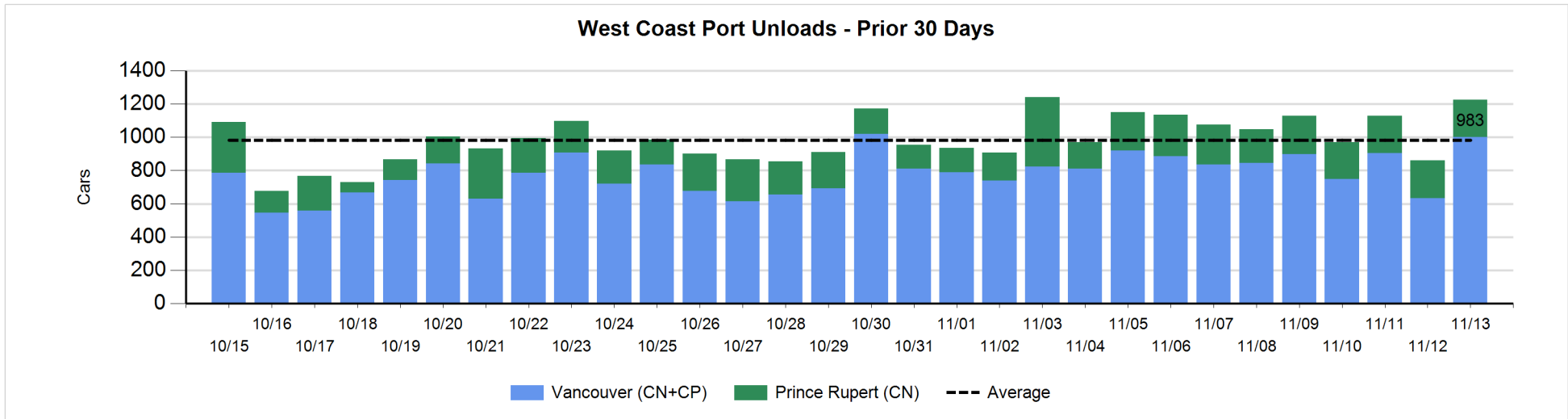
**Change in Loads Not Moving 48 Hours or More - 11/13/2019**

	E Canada	Prince Rupert	Thunder Bay	USA/MEX	Vancouver	Total
<b>CN</b>						
Origin	5	208		0	-202	11
Enroute	8	-1	0	0	-21	-14
Destination	-19		-58	9	-4	-72
	-6	207	-58	9	-227	-75
<b>CP</b>						
Origin			108		157	265
Enroute	17		32	0	-231	-182
Destination			-65		55	-10
	17		75	0	-19	73
<b>US Rail / Short Line</b>						
Origin						
Enroute				0		0
Destination				18	3	21
				18	3	21



Port Unloads - 11/13/2019

	Prince Rupert	Vancouver	West Coast Total	Thunder Bay	Total
CN	224	548	772	175	947
CP		453	453	229	682
	224	1,001	1,225	404	1,629





**Port Terminal Status**

**Vancouver**

Daily Activity for 11/13/2019

	Cars Arrived	Cars Received in Interchange	Cars Delivered in Interchange	Cars Placed for Unloading	Loads on Wheels at Destination As of 11/13/2019
CN	230	117	16	227	492
CP	595	11	117	420	728
SRY	1	5		5	38

**Port Unloads**

	11/13	11/12	Week To Date	Last Week
CN	548	223	1,214	2,600
CP	453	411	1,324	3,344
SRY	7	2	21	42

**Age Profile of Loaded Cars Waiting Placement for Unloading**

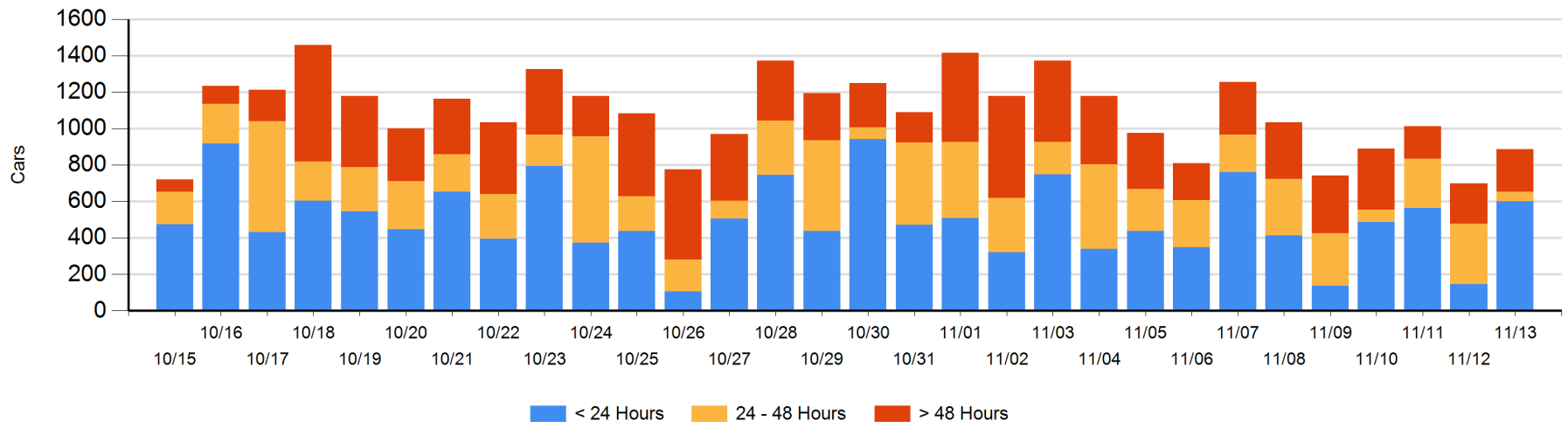
**Today**

	< 24 Hrs	24 - 48 Hrs	> 48-72 Hrs	> 72 Hrs	Total On Hand
CN	177	13	9	25	224
CP	425	39	49	151	664
SRY					0

**Change in Last 24 Hours**

	< 24 Hrs	24-48 Hrs	48 - 72 Hrs	> 72 Hrs
CN	177	-162	8	1
CP	279	-119	-32	36
SRY				

**Loaded Cars on Hand Vancouver Waiting for Placement - Last 30 Days All Railways**



**Port Terminal Status**

**Prince Rupert**

Daily Activity for 11/13/2019

	Cars Arrived	Cars Received in Interchange	Cars Delivered in Interchange	Cars Placed for Unloading	Loads on Wheels at Destination As of 11/13/2019
CN	320			318	452

**Port Unloads**

	11/13	11/12	Week To Date	Last Week
CN	224	228	679	1,533

**Age Profile of Loaded Cars Waiting Placement for Unloading**

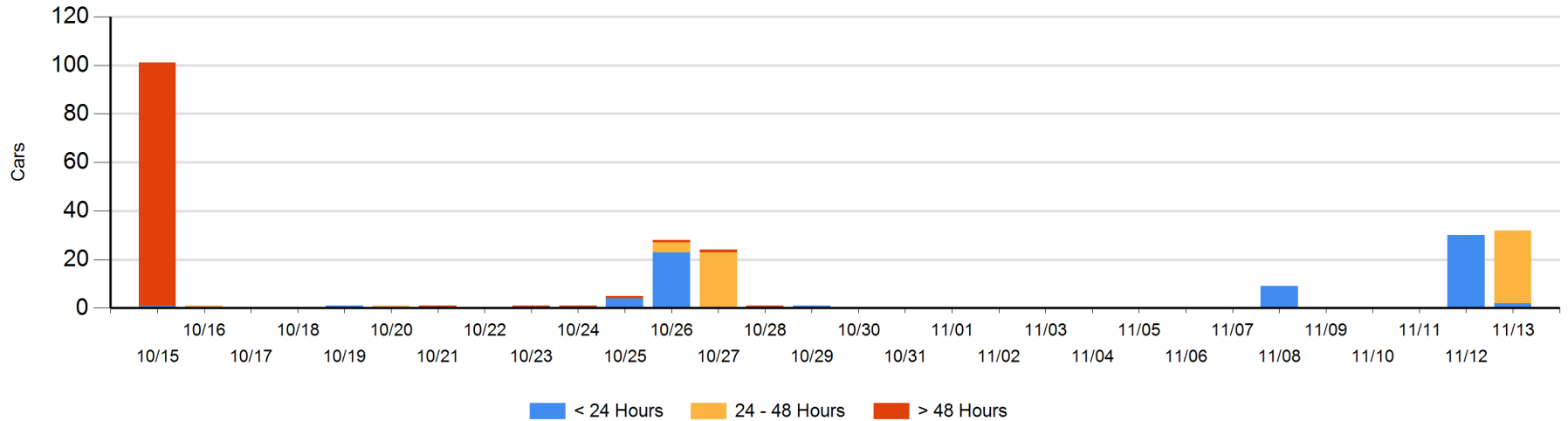
**Today**

	< 24 Hrs	24 - 48 Hrs	> 48-72 Hrs	> 72 Hrs	Total On Hand
CN	2	30			32

**Change in Last 24 Hours**

	< 24 Hrs	24-48 Hrs	48 - 72 Hrs	> 72 Hrs
CN	-28	30		

Loaded Cars on Hand Prince Rupert Waiting for Placement - Last 30 Days All Railways



**Port Terminal Status**

**Thunder Bay**

Daily Activity for 11/13/2019

	Cars Arrived	Cars Received in Interchange	Cars Delivered in Interchange	Cars Placed for Unloading	Loads on Wheels at Destination As of 11/13/2019
CN	105			31	391
CP	91			114	683

**Port Unloads**

	11/13	11/12	Week To Date	Last Week
CN	175	83	479	855
CP	229	177	501	1,747

**Age Profile of Loaded Cars Waiting Placement for Unloading**

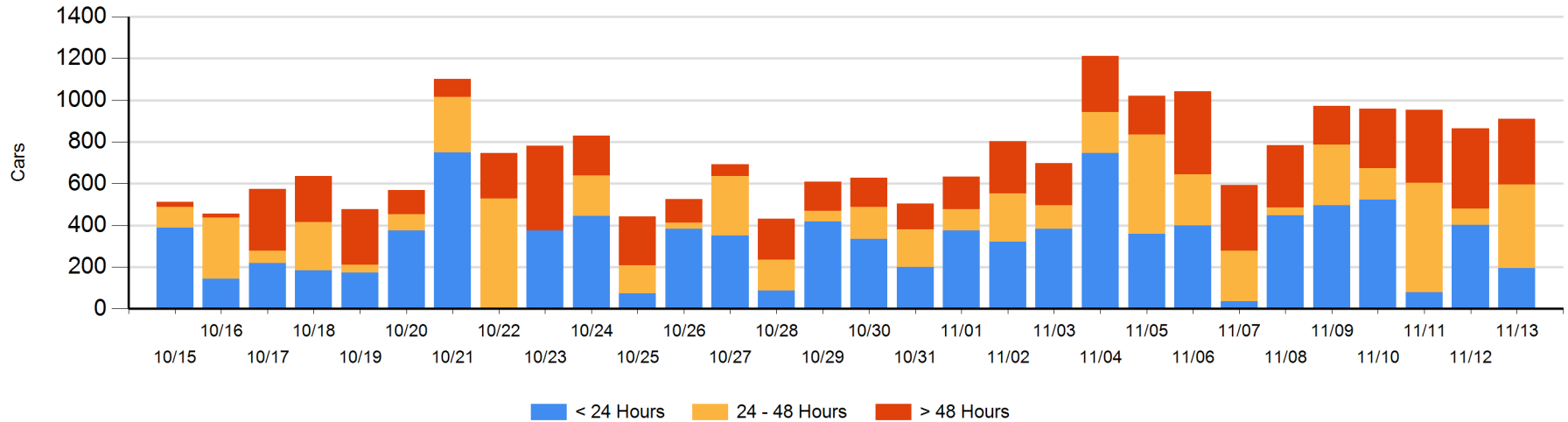
**Today**

	< 24 Hrs	24 - 48 Hrs	> 48-72 Hrs	> 72 Hrs	Total On Hand
CN	105	99	3	79	286
CP	91	302	26	206	625

**Change in Last 24 Hours**

	< 24 Hrs	24-48 Hrs	48 - 72 Hrs	> 72 Hrs
CN	6	96	-73	44
CP	-211	226	-55	13

**Loaded Cars on Hand Thunder Bay Waiting for Placement - Last 30 Days All Railways**



## Measurement Definitions

Loads on Wheels	<p>Count of loaded rail cars including all rail cars that have been released loaded at origin and have not been reported by the railway as unloaded at destination.</p> <p>Counts include all rail cars (hopper cars and boxcars) moving within a pipeline.</p>
Loads Not Moving	<p>Loaded rail cars for which the railways have not reported a movement event for 48 hours or more whether the rail car is at origin, enroute or at destination.</p>
Port Unloads	<p>Count of rail cars reported by railways as unloaded at the western port destinations of Vancouver, Prince Rupert and Thunder Bay.</p> <p>Unload counts include all rail cars (hopper cars and boxcars) unloaded by all receivers including major port terminals, transloaders and other receivers.</p>
Cars Arrived	<p>Count of rail cars reported as arrived at the destination railway terminal.</p>
Cars Received in Interchange	<p>Count of rail cars received in interchange by each railway within a destination railway terminal. Interchange activity is tracked for the Vancouver and Thunder Bay pipelines as applicable.</p>
Cars Delivered in Interchange	<p>Count of rail cars delivered in interchange by each railway within a destination railway terminal. Interchange activity is tracked for the Vancouver and Thunder Bay pipelines as applicable.</p>
Cars Placed for Unloading	<p>Count of rail cars reported by the railways as placed loaded at the receiver's facility for unloading.</p>
Loads on Wheels at Destination	<p>Count of rail cars that remain under load within the destination railway terminal including rail cars that have been reported as placed for unloading but not yet reported as unloaded.</p>
Waiting Placement for Unloading	<p>Count of rail cars that have been reported as arrived at the destination railway terminal but not reported as placed for unloading by the railway.</p> <p>For the Ports of Vancouver, Prince Rupert and Thunder Bay the count of rail cars waiting placement for unloading is categorized by age – i.e. the elapsed time from arrival at destination to the current report date.</p>