

SPEED READ

- Loads on wheels decreased overnight, marking a decline in both CN and CP volumes. On a net basis, volumes decreased due to reduced volumes in the Vancouver, Prince Rupert and USA/MEX corridors offset by higher volumes in the Thunder Bay and E. Canada corridors.
- Network fluidity improved overnight, led by a decline in idle car counts on CP by 28% (-309) offset by an increase in idle car counts on CN by 15% (+94). The total count of cars for 4+ days on both railways declined 13% (-86) overnight - currently at 571 cars.
- Four days in Week 15 unloads now behind prior week's performance by 350 unloads, reflecting lower unloads at Thunder Bay and Vancouver offset by improved week over week performance at Prince Rupert.

=====

Loads on Wheels

- Loads on wheels decreased 2% (-228) overnight, due to lower traffic on both CN and CP - combined total at 10,706 and 6% below the trailing 30-day average.
- On a net basis, the decline in loads on wheels indicates reduced volumes in the Vancouver, Prince Rupert and USA/MEX corridors offset by higher volumes in the Thunder Bay and E. Canada corridors.
- CN volumes declined marginally by 1% (-59) overnight, with reduced volumes in the Vancouver and Prince Rupert corridors offset by higher volumes in the Thunder Bay, E. Canada and USA/MEX corridors. System wide CN loads on wheels currently at 5,324 and 14% below the trailing 30-day average.
- CP volumes decreased 2% (-105) overnight, driven by a decline in traffic across all corridors. CP system wide loads on wheels currently at 5,294 and 6% above the trailing 30-day average.
- Vancouver presently at 5,251, the lowest seen in the last 30 days, decreased 6% (-361) overnight, now 13% below the trailing 30-day average.
- The Prince Rupert pipeline currently at 1,558, declined for the third consecutive day, down 12% (-204) overnight, and 16% below the trailing 30-day average.
- Thunder Bay volumes rose significantly by 14% (+326) overnight - currently at 2,668 and 19% above the trailing 30-day average, with 68% of traffic moving on CP.

Hopper Car Rationing

- No hopper cars were rationed by either CN or CP in week 13.

Loads Not Moving

- **The count of cars not moving for 48+ hours declined 12% (-215) overnight and have now decreased for the third consecutive day, marking reduced counts on CP offset by higher counts on CN. Idle car counts presently at 1,546 and 21% below the trailing 30-day average.**
- CN
 - **The count of idle cars for 48+ hours gained 15% (+94) overnight - currently at 737 cars.**
 - The number of cars idle for 4+ days increased for the fifth consecutive day, up 14% (+32) overnight - currently at 259 cars.
 - The count of cars not moving for 7+ days gained 16% (+7) overnight - currently at 43 cars.
 - Vancouver represents 18% of all idle cars.
 - In total 58% of all idle cars are dwelling at origin locations.
- CP
 - **CP idle car counts for 48+ hours declined 28% (-309) overnight - currently at 809 cars.**

- The number of cars idle for 4+ days declined 27% (-118) overnight - currently at 312 cars.
- The number of cars idle for 7+ days decreased 46% (-112) overnight - currently at 134 cars.
- Vancouver accounts for 56% of all idle cars.
- In total 29% of all idle cars are dwelling at origin locations.

Port Performance

- CN and CP reported a total of 1,408 cars unloaded at the three major ports, 6% above the trailing 30-day average. Four days in Week 15 unloads now behind last week's pace by 350 unloads, reflecting lower unloads at Thunder Bay and Vancouver offset by higher unloads at Prince Rupert.
- Vancouver
 - 745 unloads reported by CN and CP at the Port of Vancouver; CN - 338 and CP - 407. Four days in Week 15 unloads are tracking behind last week's performance by 150 unloads.
 - There are about 1,450 cars on site at Vancouver with about 950 cars arriving at the port in the last 24 hours.
 - CN and CP have 800 cars in British Columbia en route to Vancouver, with more than 550 cars at Kamloops and west, and 80% of traffic moving on CP.
- Prince Rupert
 - Prince Rupert reported 308 unloads, now ahead of last week's unloads after four days by 100 unloads.
 - Loads on wheels remain above 1,000 cars - presently at 1,558 cars.
 - There are 650 cars west of Jasper en route to Prince Rupert.
 - There are approximately 150 cars on site at Prince Rupert with zero cars arriving at the port in the last 24 hours.
- Thunder Bay
 - 355 unloads were reported at Thunder Bay yesterday. Four days in Week 15 unloads are tracking behind last week's pace by more than 300 unloads.
 - There are more than 1,000 cars on site at Thunder Bay with 300 cars arriving at the port in the prior 24 hours.
 - There are 350 cars en route to Thunder Bay from Winnipeg and east.

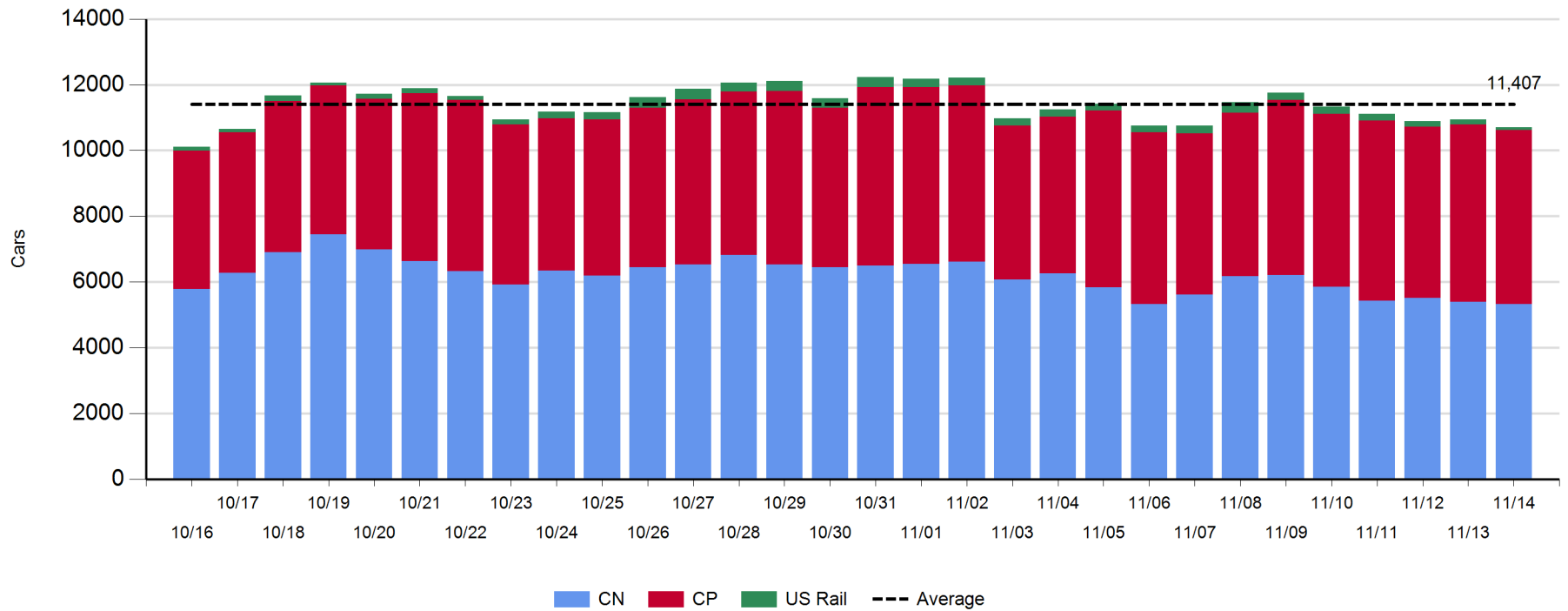
Daily Loads on Wheels - 11/14/2019

	E Canada	Prince Rupert	Thunder Bay	USA/MEX	Vancouver	Total
CN	798	1,558	844	236	1,888	5,324
CP	137		1,824	10	3,323	5,294
Short Line					40	40
US Rail				48		48
	935	1,558	2,668	294	5,251	10,706

Change in Loads on Wheels - Prior 24 Hours

	E Canada	Prince Rupert	Thunder Bay	USA/MEX	Vancouver	Total
CN	65	-204	337	38	-295	-59
CP	-3		-11	-23	-68	-105
Short Line					2	2
US Rail				-66		-66
	62	-204	326	-51	-361	-228

Loads on Wheels - Prior 30 Days

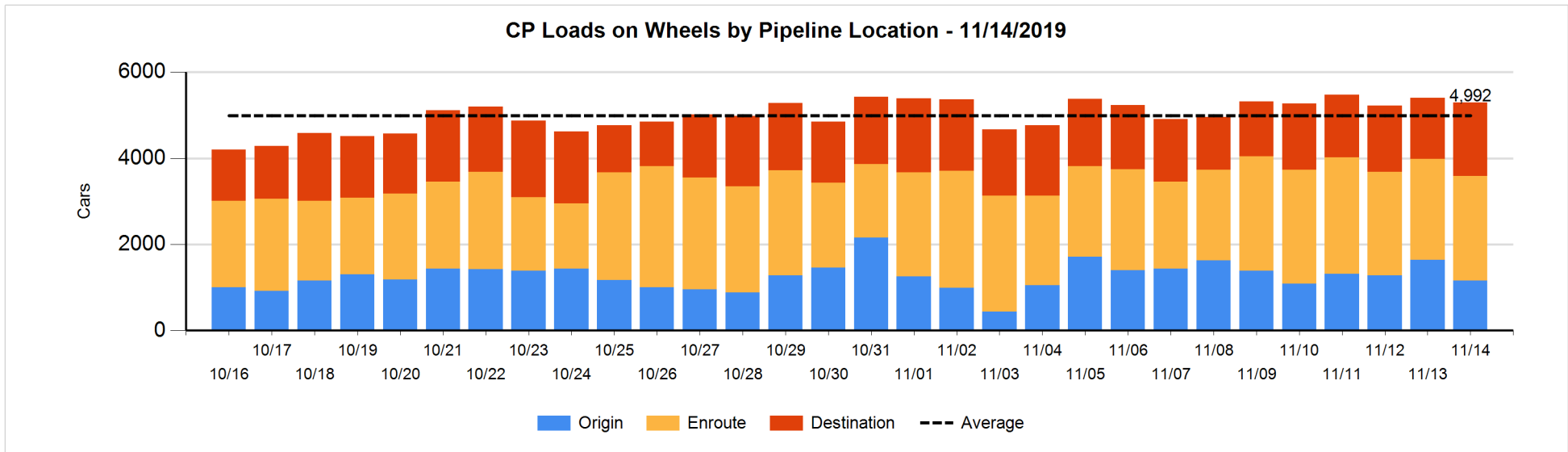
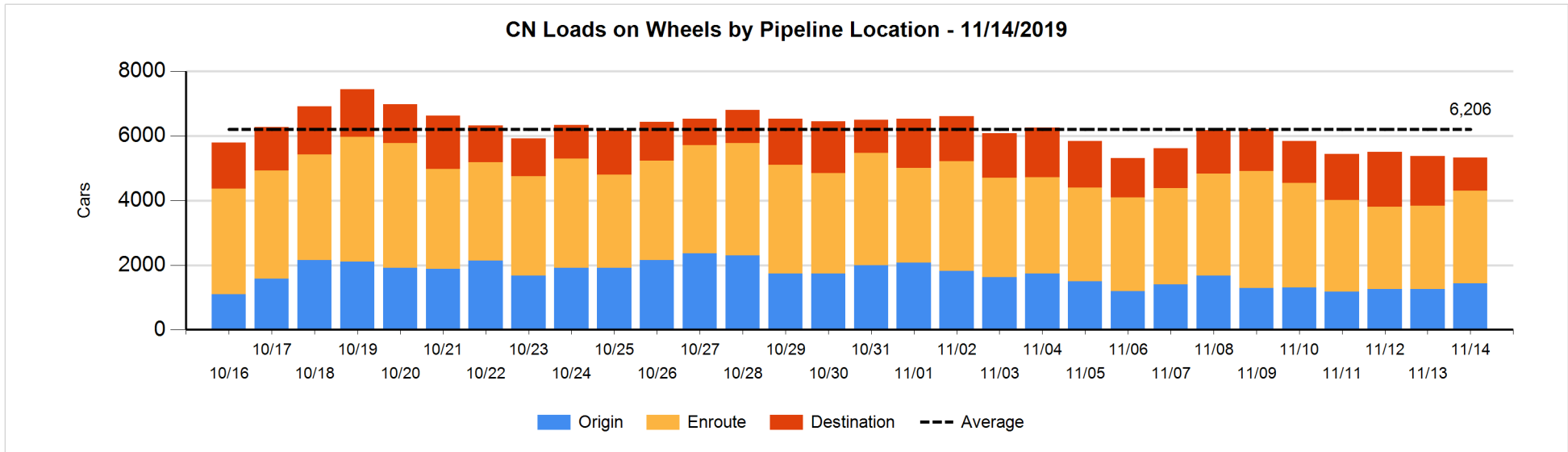


Daily Loads on Wheels By Pipeline Location - 11/14/2019

	E Canada	Prince Rupert	Thunder Bay	USA/MEX	Vancouver	Total
CN						
Origin	219	564	339	60	256	1,438
Enroute	433	852	234	154	1,194	2,867
Destination	146	142	271	22	438	1,019
	798	1,558	844	236	1,888	5,324
CP						
Origin			500	1	653	1,154
Enroute	137		575	9	1,718	2,439
Destination			749		952	1,701
	137		1,824	10	3,323	5,294
US Rail / Short Line						
Origin						
Enroute				24		24
Destination				24	40	64
				48	40	88

Change in Daily Loads on Wheels By Pipeline Location - Prior 24 Hours

	E Canada	Prince Rupert	Thunder Bay	USA/MEX	Vancouver	Total
CN						
Origin	35	3	323	-1	-178	182
Enroute	53	103	134	51	-63	278
Destination	-23	-310	-120	-12	-54	-519
	65	-204	337	38	-295	-59
CP						
Origin	-1		-137	1	-344	-481
Enroute	-2		60	-20	52	90
Destination			66	-4	224	286
	-3		-11	-23	-68	-105
US Rail / Short Line						
Origin						
Enroute				0		0
Destination				-66	2	-64
				-66	2	-64

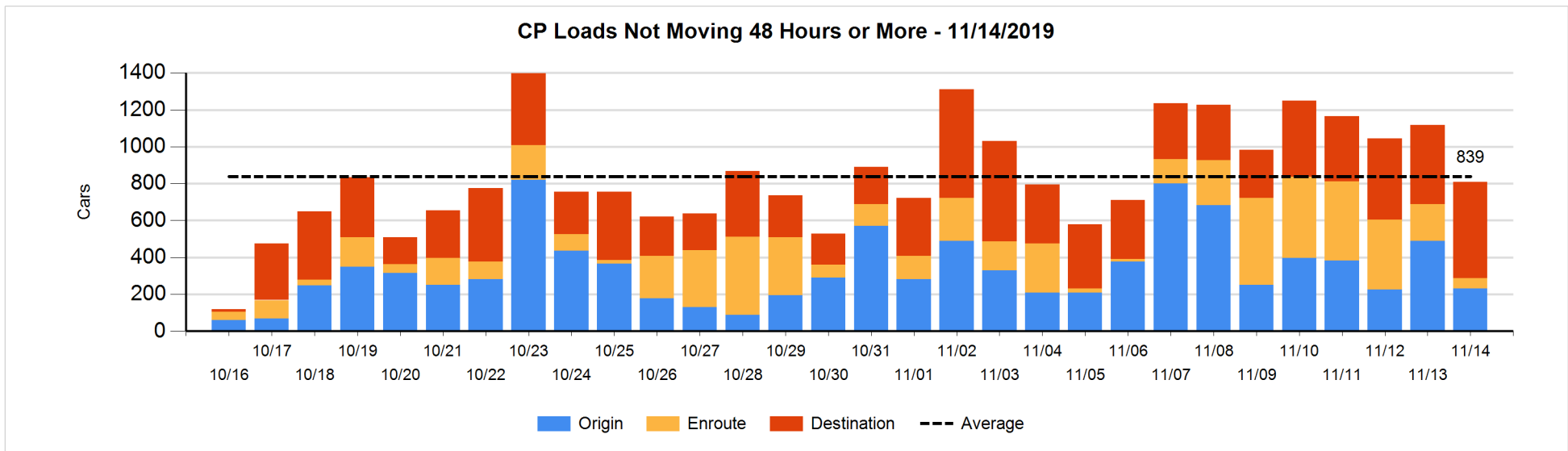
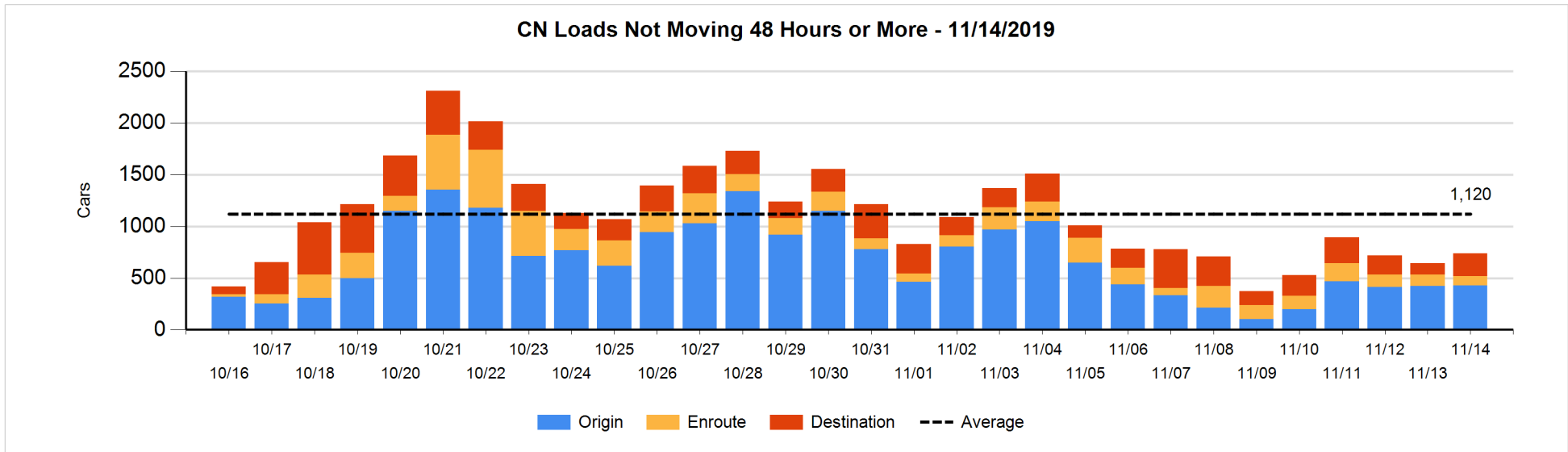


Loads Not Moving 48 Hours or More - 11/14/2019

	E Canada	Prince Rupert	Thunder Bay	USA/MEX	Vancouver	Total
CN						
Origin	5	309		6	109	429
Enroute	46	14	1	14	15	90
Destination	18	57	124	14	5	218
	69	380	125	34	129	737
CP						
Origin					232	232
Enroute	1		19	2	33	55
Destination			332		190	522
	1		351	2	455	809
US Rail / Short Line						
Origin						
Enroute				12		12
Destination				8	24	32
				20	24	44

Change in Loads Not Moving 48 Hours or More - 11/14/2019

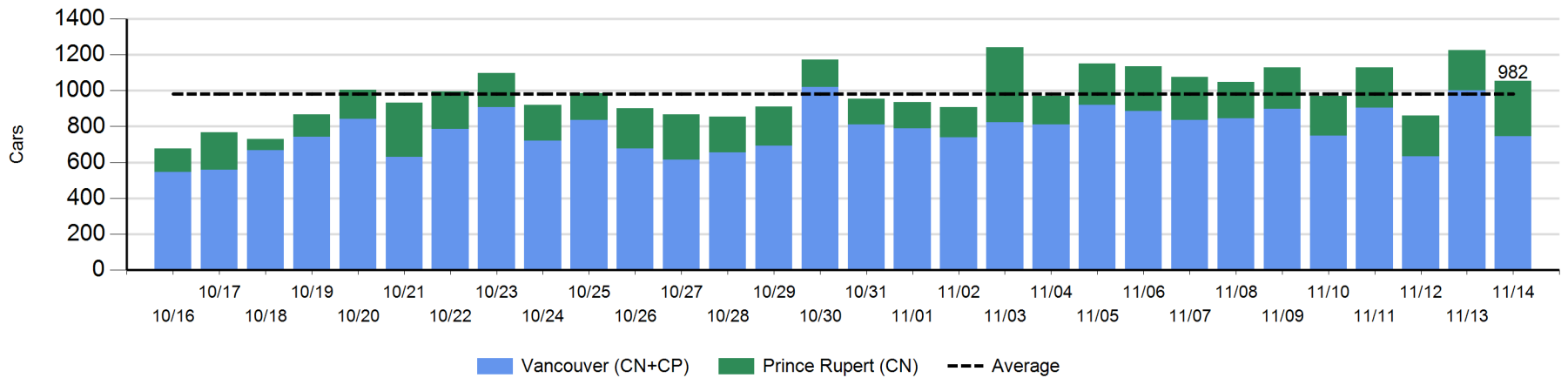
	E Canada	Prince Rupert	Thunder Bay	USA/MEX	Vancouver	Total
CN						
Origin	0	2		0	3	5
Enroute	-4	2	0	-1	-15	-18
Destination	-8	57	67	-5	-4	107
	-12	61	67	-6	-16	94
CP						
Origin			-115		-143	-258
Enroute	-20		-18	1	-106	-143
Destination			78		14	92
	-20		-55	1	-235	-309
US Rail / Short Line						
Origin						
Enroute				1		1
Destination				-34	1	-33
				-33	1	-32



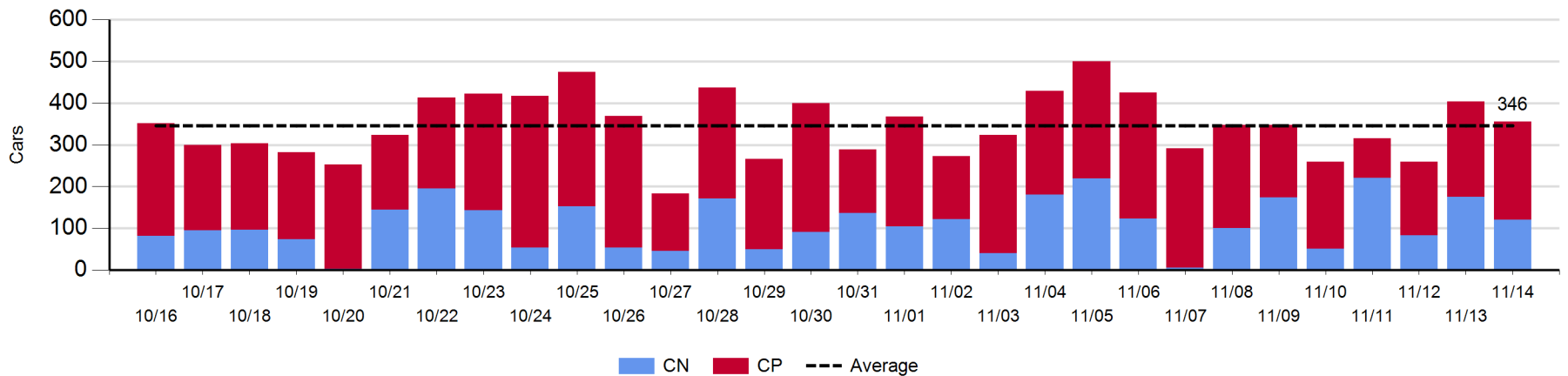
Port Unloads - 11/14/2019

	Prince Rupert	Vancouver	West Coast Total	Thunder Bay	Total
CN	308	338	646	120	766
CP		407	407	235	642
	308	745	1,053	355	1,408

West Coast Port Unloads - Prior 30 Days



Thunder Bay Port Unloads - Prior 30 Days



Port Terminal Status

Vancouver

Daily Activity for 11/14/2019

	Cars Arrived	Cars Received in Interchange	Cars Delivered in Interchange	Cars Placed for Unloading	Loads on Wheels at Destination As of 11/14/2019
CN	376	6	198	251	438
CP	558	198	16	408	952
SRY		10		19	40

Port Unloads

	11/14	11/13	Week To Date	Last Week
CN	338	548	1,552	2,600
CP	407	453	1,731	3,344
SRY	19	7	40	42

Age Profile of Loaded Cars Waiting Placement for Unloading

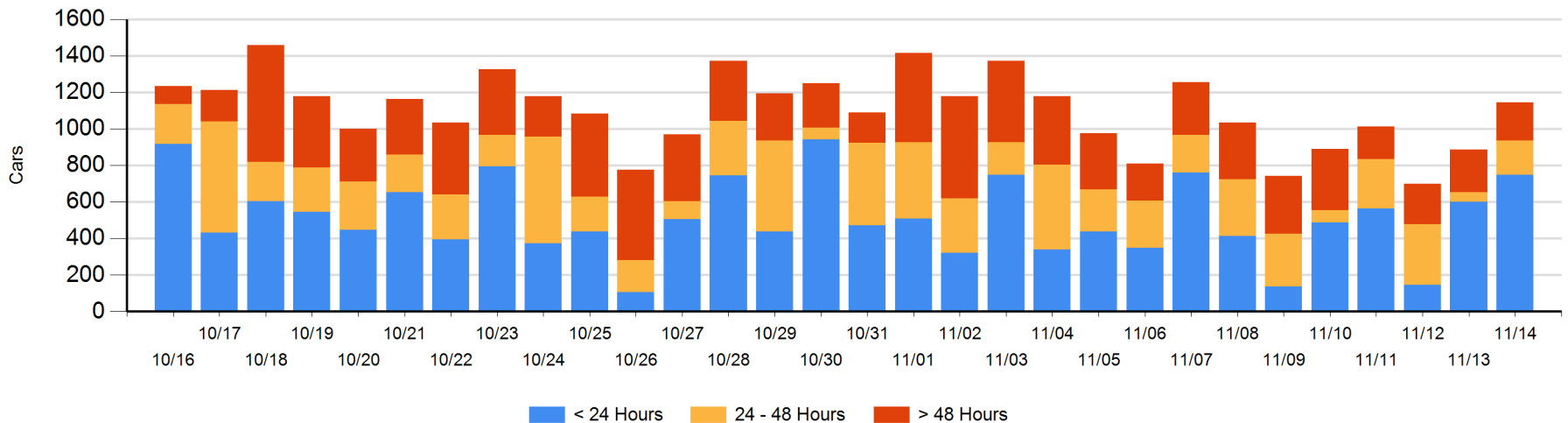
Today

	< 24 Hrs	24 - 48 Hrs	> 48-72 Hrs	> 72 Hrs	Total On Hand
CN	305	17	13	26	361
CP	444	169	24	148	785
SRY					0

Change in Last 24 Hours

	< 24 Hrs	24-48 Hrs	48 - 72 Hrs	> 72 Hrs
CN	128	4	4	1
CP	19	130	-25	-3
SRY				

Loaded Cars on Hand Vancouver Waiting for Placement - Last 30 Days All Railways



Port Terminal Status

Prince Rupert

Daily Activity for 11/14/2019

	Cars Arrived	Cars Received in Interchange	Cars Delivered in Interchange	Cars Placed for Unloading	Loads on Wheels at Destination As of 11/14/2019
CN					142

Port Unloads

	11/14	11/13	Week To Date	Last Week
CN	308	224	987	1,533

Age Profile of Loaded Cars Waiting Placement for Unloading

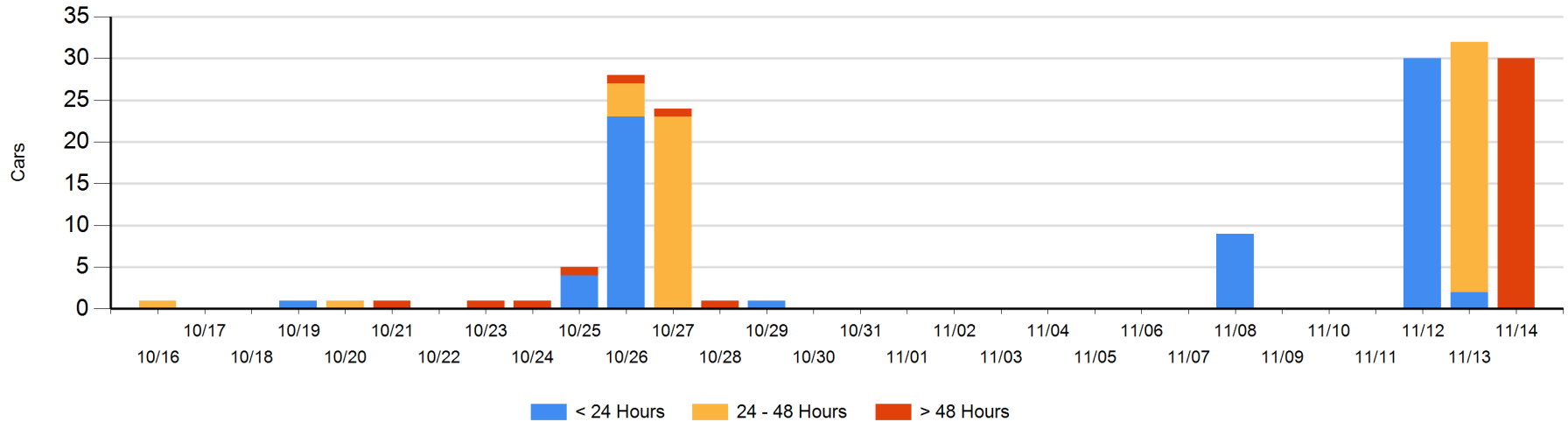
Today

	< 24 Hrs	24 - 48 Hrs	> 48-72 Hrs	> 72 Hrs	Total On Hand
CN			30		30

Change in Last 24 Hours

	< 24 Hrs	24-48 Hrs	48 - 72 Hrs	> 72 Hrs
CN	-2	-30	30	

Loaded Cars on Hand Prince Rupert Waiting for Placement - Last 30 Days All Railways



Port Terminal Status

Thunder Bay

Daily Activity for 11/14/2019

	Cars Arrived	Cars Received in Interchange	Cars Delivered in Interchange	Cars Placed for Unloading	Loads on Wheels at Destination As of 11/14/2019
CN				213	271
CP	301			242	749

Port Unloads

	11/14	11/13	Week To Date	Last Week
CN	120	175	599	855
CP	235	229	736	1,747

Age Profile of Loaded Cars Waiting Placement for Unloading

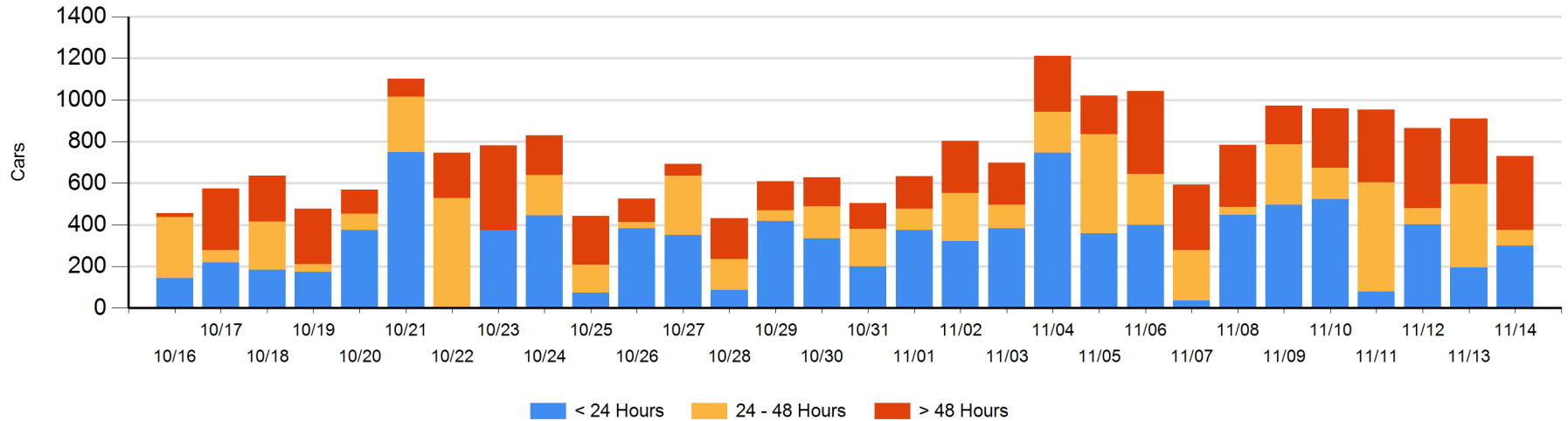
Today

	< 24 Hrs	24 - 48 Hrs	> 48-72 Hrs	> 72 Hrs	Total On Hand
CN		21	25	27	73
CP	301	54	144	159	658

Change in Last 24 Hours

	< 24 Hrs	24-48 Hrs	48 - 72 Hrs	> 72 Hrs
CN	-105	-78	22	-52
CP	210	-248	118	-47

Loaded Cars on Hand Thunder Bay Waiting for Placement - Last 30 Days All Railways



Measurement Definitions

Loads on Wheels	<p>Count of loaded rail cars including all rail cars that have been released loaded at origin and have not been reported by the railway as unloaded at destination.</p> <p>Counts include all rail cars (hopper cars and boxcars) moving within a pipeline.</p>
Loads Not Moving	<p>Loaded rail cars for which the railways have not reported a movement event for 48 hours or more whether the rail car is at origin, enroute or at destination.</p>
Port Unloads	<p>Count of rail cars reported by railways as unloaded at the western port destinations of Vancouver, Prince Rupert and Thunder Bay.</p> <p>Unload counts include all rail cars (hopper cars and boxcars) unloaded by all receivers including major port terminals, transloaders and other receivers.</p>
Cars Arrived	<p>Count of rail cars reported as arrived at the destination railway terminal.</p>
Cars Received in Interchange	<p>Count of rail cars received in interchange by each railway within a destination railway terminal. Interchange activity is tracked for the Vancouver and Thunder Bay pipelines as applicable.</p>
Cars Delivered in Interchange	<p>Count of rail cars delivered in interchange by each railway within a destination railway terminal. Interchange activity is tracked for the Vancouver and Thunder Bay pipelines as applicable.</p>
Cars Placed for Unloading	<p>Count of rail cars reported by the railways as placed loaded at the receiver's facility for unloading.</p>
Loads on Wheels at Destination	<p>Count of rail cars that remain under load within the destination railway terminal including rail cars that have been reported as placed for unloading but not yet reported as unloaded.</p>
Waiting Placement for Unloading	<p>Count of rail cars that have been reported as arrived at the destination railway terminal but not reported as placed for unloading by the railway.</p> <p>For the Ports of Vancouver, Prince Rupert and Thunder Bay the count of rail cars waiting placement for unloading is categorized by age – i.e. the elapsed time from arrival at destination to the current report date.</p>