

SPEED READ

- Loads on wheels fell overnight, reflecting a decline in CN volumes offset by higher CP volumes. On a net basis, volumes decreased due to reduced volumes across all corridors.
- Network fluidity deteriorated overnight, led by an increase in idle car counts on both CN and CP by 55% (+485) and 73% (+629), respectively. The total count of cars for 4+ days on both railways rose 39% (+178) overnight - currently at 631 cars.
- Week 15 unloads finished behind prior week's performance by more than 600 unloads, reflecting reduced unloads at Vancouver and Thunder Bay offset by improved week over week performance at Prince Rupert.

=====

Loads on Wheels

- Loads on wheels fell 3% (-354) overnight, due to reduced volumes on CN offset by higher traffic on CP - combined total at 11,158 and 3% below the trailing 30-day average.
- On a net basis, the decline in loads on wheels reflects reduced volumes across all corridors.
- CN volumes declined 7% (-410) overnight, with reduced volumes across all corridors other than E. Canada. System wide CN loads on wheels currently at 5,648 and 8% below the trailing 30-day average.
- CP volumes increased slightly by 1% (+34) overnight, driven by an increase in volumes in the Thunder Bay corridor offset by a decline in volumes in all other corridors. CP system wide loads on wheels now at 5,394 and 6% above the trailing 30-day average.
- Vancouver currently at 5,628, decreased 3% (-185) overnight, now 6% below the trailing 30-day average.
- The Prince Rupert pipeline currently at 1,749, decreased 6% (-116) overnight, and 5% below the trailing 30-day average.
- Thunder Bay volumes decreased slightly by 1% (-26) overnight and have now decreased for the third consecutive day - currently at 2,584 and 12% above the trailing 30-day average, with 77% of traffic moving on CP.

Hopper Car Rationing

- No hopper cars were rationed by either CN or CP in week 14.

Loads Not Moving

- **The count of cars not moving for 48+ hours increased for the third consecutive day, up 64% (+1,114) overnight, reflecting higher counts on both CN and CP. Idle car counts currently at 2,856 and 39% above the trailing 30-day average.**
- CN
 - **The count of idle cars for 48+ hours increased significantly by 55% (+485) overnight - currently at 1,368 cars.**
 - The number of cars idle for 4+ days increased 80% (+205) overnight - currently at 462 cars.
 - The count of cars not moving for 7+ days increased for the fourth consecutive day, up 6% (+10) overnight - currently at 187 cars.
 - Vancouver represents 43% of all idle cars.
 - In total 64% of all idle cars are dwelling at origin locations.
- CP
 - **CP idle car counts for 48+ hours increased significantly by 73% (+629) overnight and have now increased for the third consecutive day - now at 1,488 cars, the highest seen in the last 30 days.**
 - The number of cars idle for 4+ days fell 14% (-27) overnight - now at 169 cars.

- The number of cars idle for 7+ days decreased for the fourth consecutive day, down 2% (-1) overnight - now at 48 cars.
- Vancouver accounts for 64% of all idle cars.
- In total 47% of all idle cars are dwelling at origin locations.

Port Performance

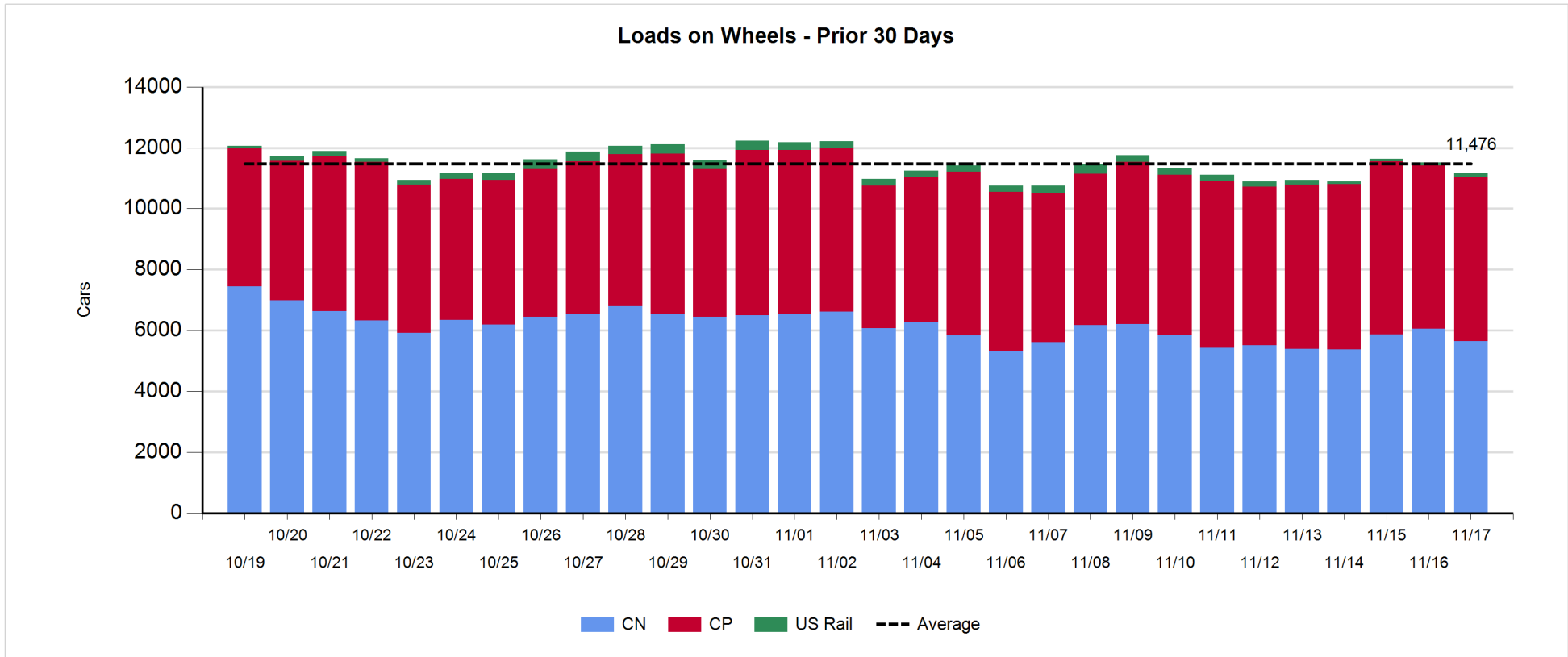
- CN and CP reported a total of 1,287 cars unloaded at the three major ports, 5% below the trailing 30-day average. Week 15 unloads finished behind last week's pace by more than 600 unloads, reflecting reduced unloads at Vancouver and Thunder Bay offset by higher unloads at Prince Rupert.
- Vancouver
 - 710 unloads reported by CN and CP at the Port of Vancouver; CN - 288 and CP - 422. Week 15 unloads ended behind last week's performance by 450 unloads.
 - There are more than 2,050 cars on site at Vancouver with 800 cars arriving at the port in the last 24 hours.
 - CN and CP have less than 650 cars in British Columbia en route to Vancouver, with 300 cars at Kamloops and west, and 79% of traffic moving on CP.
- Prince Rupert
 - Prince Rupert reported 219 unloads, finished ahead of last week's unloads by more than 100 unloads.
 - Loads on wheels remain above 1,000 cars - currently at 1,749 cars.
 - There are about 300 cars west of Jasper en route to Prince Rupert.
 - There are more than 200 cars on site at Prince Rupert with more than 300 cars arriving at the port in the last 24 hours.
- Thunder Bay
 - 358 unloads were reported at Thunder Bay yesterday. Week 15 unloads ended behind last week's pace by 300 unloads.
 - There are 1,250 cars on site at Thunder Bay with fewer than 450 cars arriving at the port in the prior 24 hours.
 - There are more than 600 cars en route to Thunder Bay from Winnipeg and east.

Daily Loads on Wheels - 11/17/2019

	E Canada	Prince Rupert	Thunder Bay	USA/MEX	Vancouver	Total
CN	892	1,749	594	191	2,222	5,648
CP	14		1,990	29	3,361	5,394
Short Line					45	45
US Rail				71		71
	906	1,749	2,584	291	5,628	11,158

Change in Loads on Wheels - Prior 24 Hours

	E Canada	Prince Rupert	Thunder Bay	USA/MEX	Vancouver	Total
CN	15	-116	-100	-29	-180	-410
CP	-34		74	-3	-3	34
Short Line					-2	-2
US Rail				24		24
	-19	-116	-26	-8	-185	-354

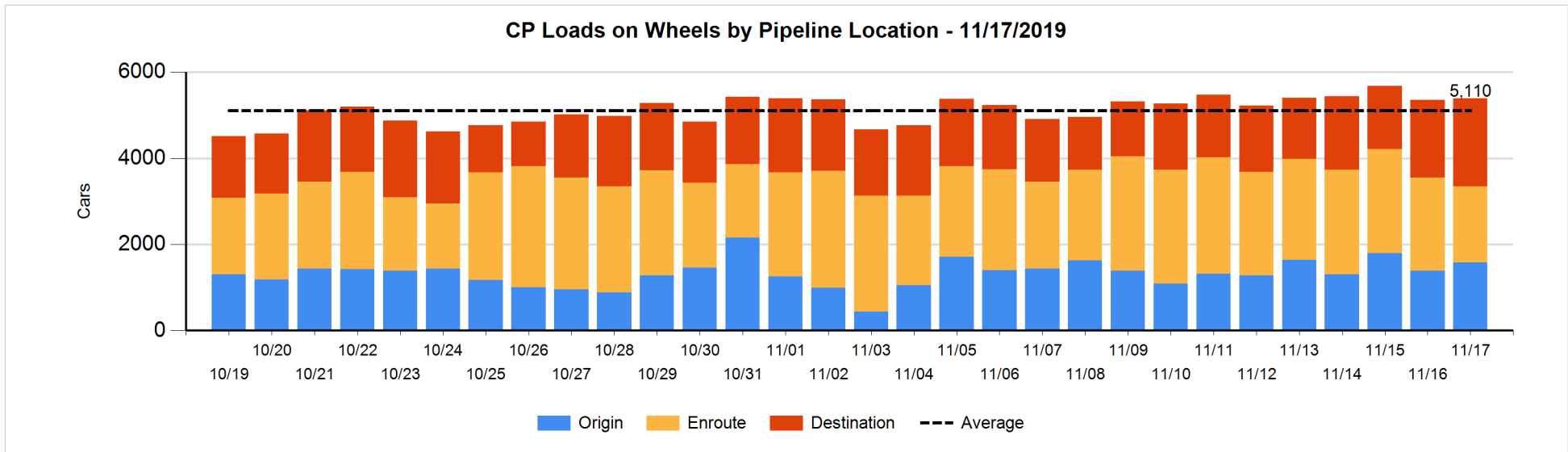
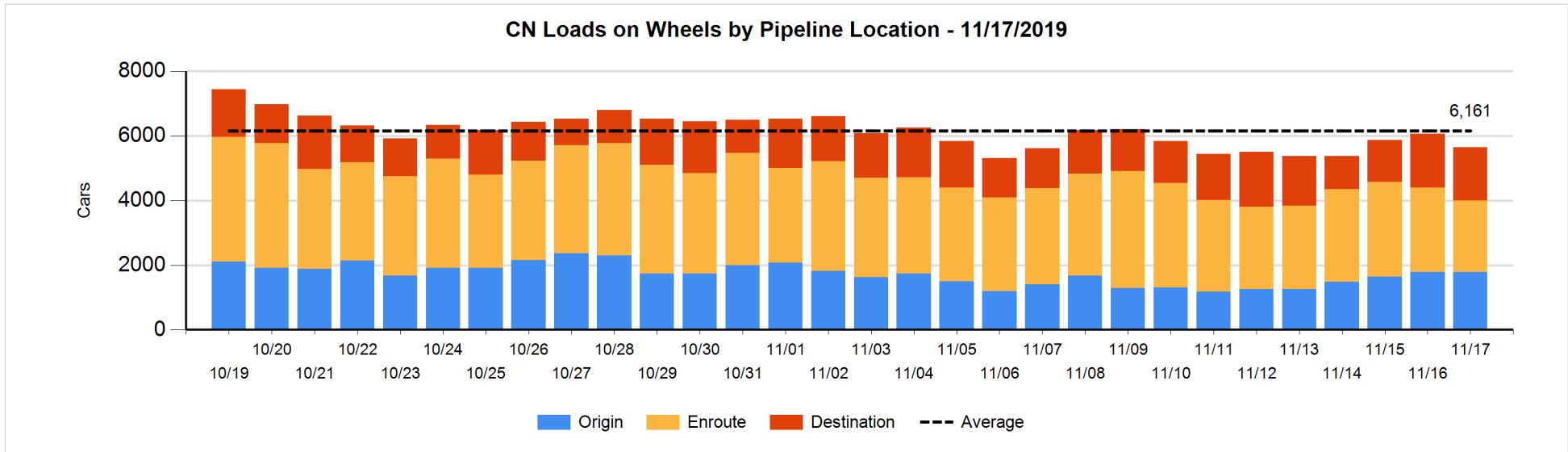


Daily Loads on Wheels By Pipeline Location - 11/17/2019

	E Canada	Prince Rupert	Thunder Bay	USA/MEX	Vancouver	Total
CN						
Origin		1,022		11	758	1,791
Enroute	724	508	143	156	673	2,204
Destination	168	219	451	24	791	1,653
	892	1,749	594	191	2,222	5,648
CP						
Origin			521	25	1,032	1,578
Enroute	14		661	4	1,090	1,769
Destination			808		1,239	2,047
	14		1,990	29	3,361	5,394
US Rail / Short Line						
Origin						
Enroute				64		64
Destination				7	45	52
				71	45	116

Change in Daily Loads on Wheels By Pipeline Location - Prior 24 Hours

	E Canada	Prince Rupert	Thunder Bay	USA/MEX	Vancouver	Total
CN						
Origin	-4	103		0	-96	3
Enroute	29	-325	-95	-36	15	-412
Destination	-10	106	-5	7	-99	-1
	15	-116	-100	-29	-180	-410
CP						
Origin	-13		220	0	-15	192
Enroute	11		-227	-3	-171	-390
Destination	-32		81		183	232
	-34		74	-3	-3	34
US Rail / Short Line						
Origin				-1		-1
Enroute				32		32
Destination				-7	-2	-9
				24	-2	22

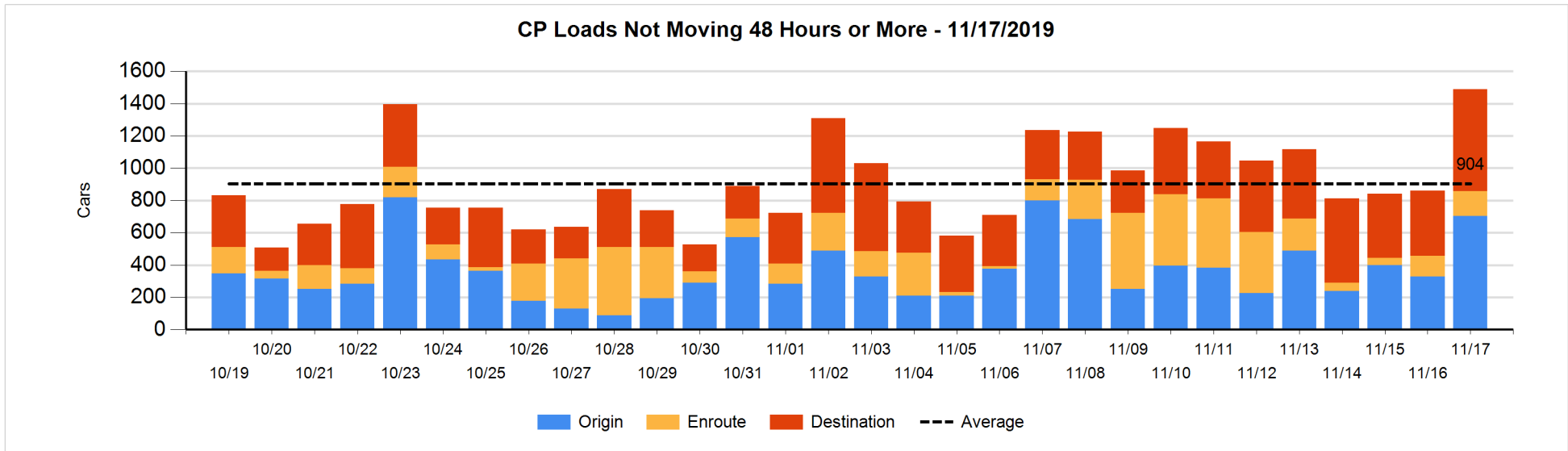
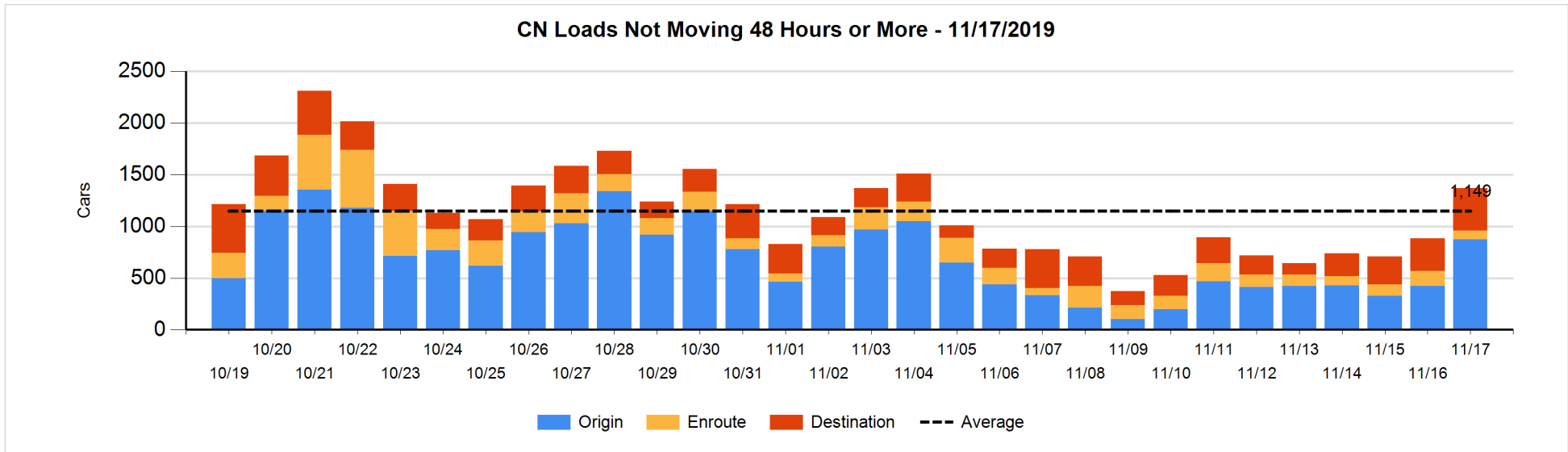


Loads Not Moving 48 Hours or More - 11/17/2019

	E Canada	Prince Rupert	Thunder Bay	USA/MEX	Vancouver	Total
CN						
Origin		409		11	452	872
Enroute	31	5		22	29	87
Destination	124	85	71	15	114	409
	155	499	71	48	595	1368
CP						
Origin			112		590	702
Enroute	1		68	4	81	154
Destination			352		280	632
	1		532	4	951	1488
US Rail / Short Line						
Origin						
Enroute				11		11
Destination				7	20	27
				18	20	38

Change in Loads Not Moving 48 Hours or More - 11/17/2019

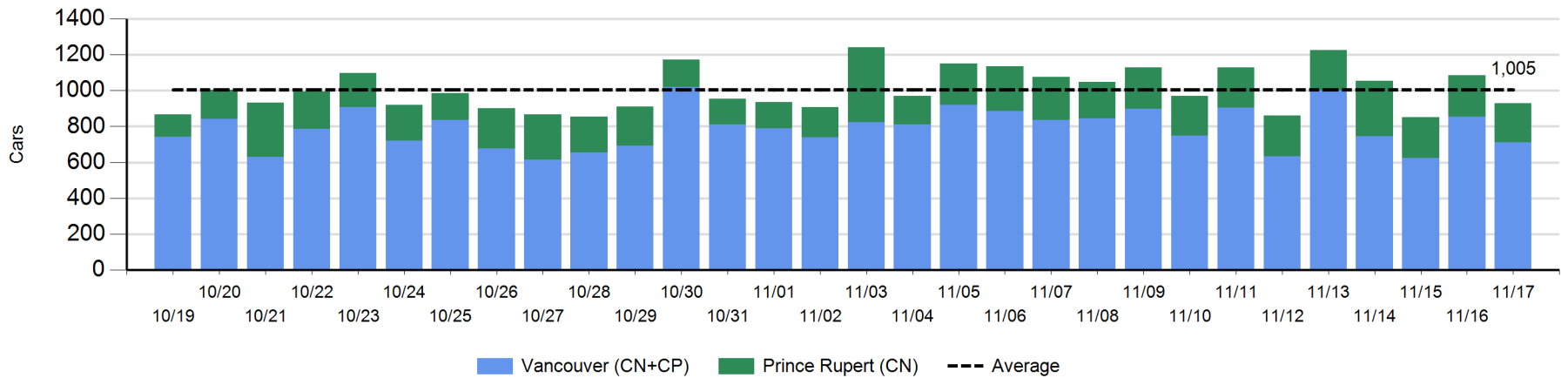
	E Canada	Prince Rupert	Thunder Bay	USA/MEX	Vancouver	Total
CN						
Origin		208		3	239	450
Enroute	-24	-45		-9	17	-61
Destination	12	60	-14	7	31	96
	-12	223	-14	1	287	485
CP						
Origin			0		374	374
Enroute	-1		52	1	-25	27
Destination			190		38	228
	-1		242	1	387	629
US Rail / Short Line						
Origin						
Enroute				2		2
Destination				-1	4	3
				1	4	5



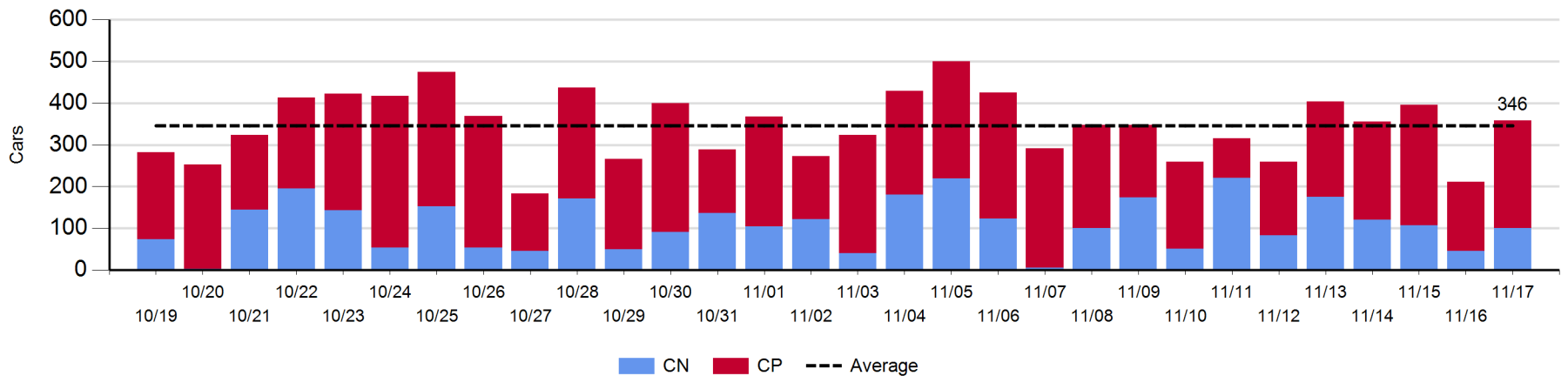
Port Unloads - 11/17/2019

	Prince Rupert	Vancouver	West Coast Total	Thunder Bay	Total
CN	219	288	507	100	607
CP		422	422	258	680
	219	710	929	358	1,287

West Coast Port Unloads - Prior 30 Days



Thunder Bay Port Unloads - Prior 30 Days



Port Terminal Status

Vancouver

Daily Activity for 11/17/2019

	Cars Arrived	Cars Received in Interchange	Cars Delivered in Interchange	Cars Placed for Unloading	Loads on Wheels at Destination As of 11/17/2019
CN	194	112	236	298	791
CP	607	228	112	491	1,239
SRY		8		1	45

Port Unloads

	11/17	11/16	Week To Date	Last Week
CN	288	409	2,567	2,600
CP	422	447	2,905	3,344
SRY	10	12	74	42

Age Profile of Loaded Cars Waiting Placement for Unloading

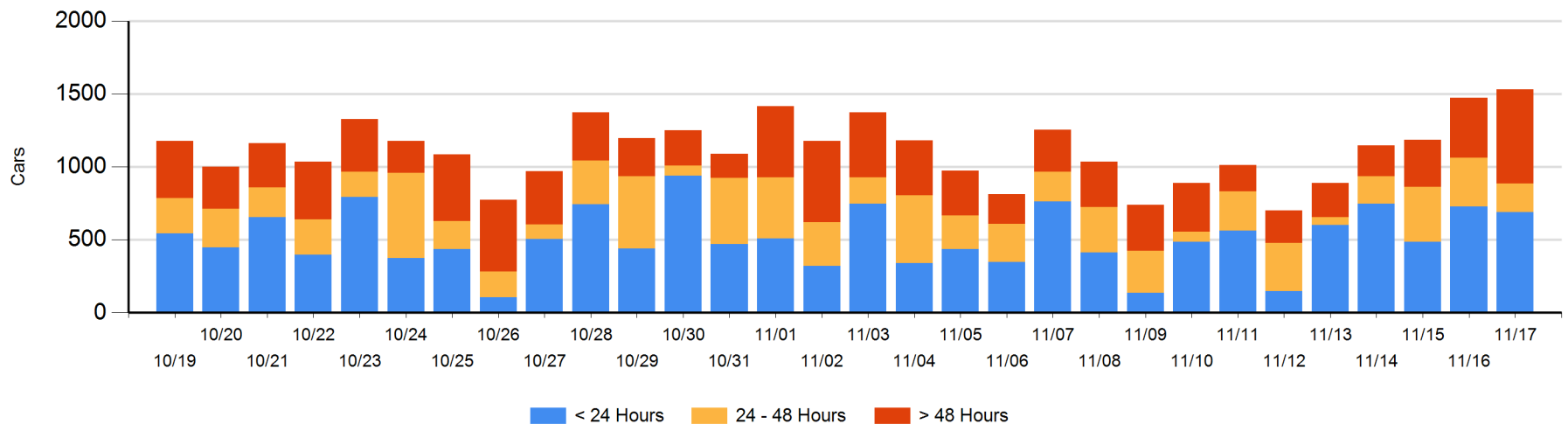
Today

	< 24 Hrs	24 - 48 Hrs	> 48-72 Hrs	> 72 Hrs	Total On Hand
CN	194	36	145	62	437
CP	496	160	153	284	1,093
SRY					0

Change in Last 24 Hours

	< 24 Hrs	24-48 Hrs	48 - 72 Hrs	> 72 Hrs
CN	-176	-113	80	24
CP	138	-25	-56	186
SRY				

Loaded Cars on Hand Vancouver Waiting for Placement - Last 30 Days All Railways



Port Terminal Status

Prince Rupert

Daily Activity for 11/17/2019

	Cars Arrived	Cars Received in Interchange	Cars Delivered in Interchange	Cars Placed for Unloading	Loads on Wheels at Destination As of 11/17/2019
CN		324		324	219

Port Unloads

	11/17	11/16	Week To Date	Last Week
CN	219	230	1,663	1,533

Age Profile of Loaded Cars Waiting Placement for Unloading

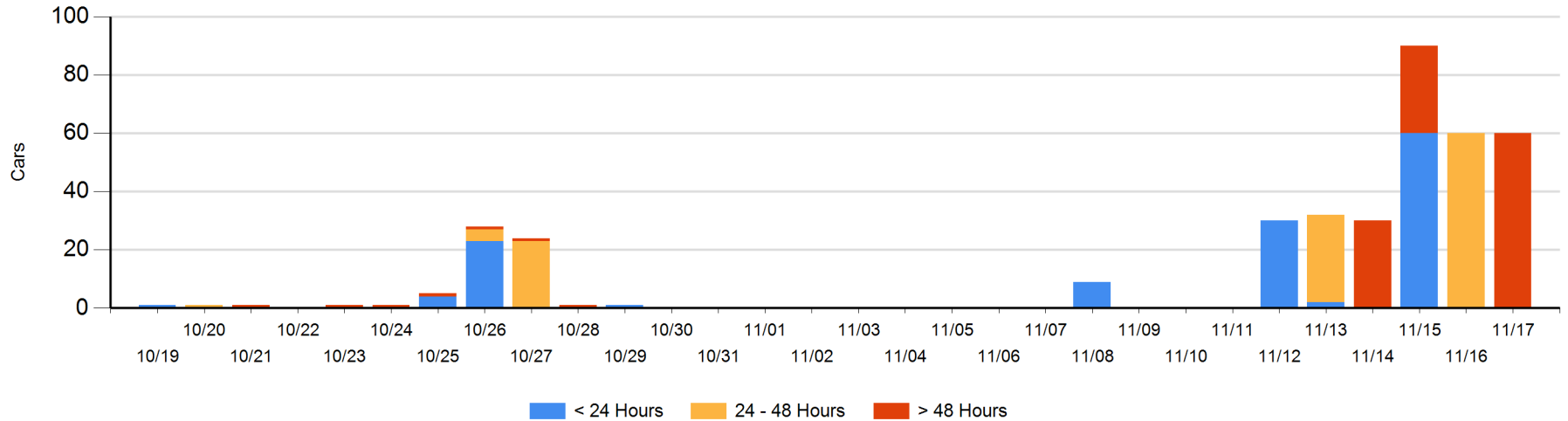
Today

	< 24 Hrs	24 - 48 Hrs	> 48-72 Hrs	> 72 Hrs	Total On Hand
CN			60		60

Change in Last 24 Hours

	< 24 Hrs	24-48 Hrs	48 - 72 Hrs	> 72 Hrs
CN		-60	60	

Loaded Cars on Hand Prince Rupert Waiting for Placement - Last 30 Days All Railways



Port Terminal Status

Thunder Bay

Daily Activity for 11/17/2019

	Cars Arrived	Cars Received in Interchange	Cars Delivered in Interchange	Cars Placed for Unloading	Loads on Wheels at Destination As of 11/17/2019
CN	95			122	451
CP	339			243	808

Port Unloads

	11/17	11/16	Week To Date	Last Week
CN	100	45	851	855
CP	258	166	1,448	1,747

Age Profile of Loaded Cars Waiting Placement for Unloading

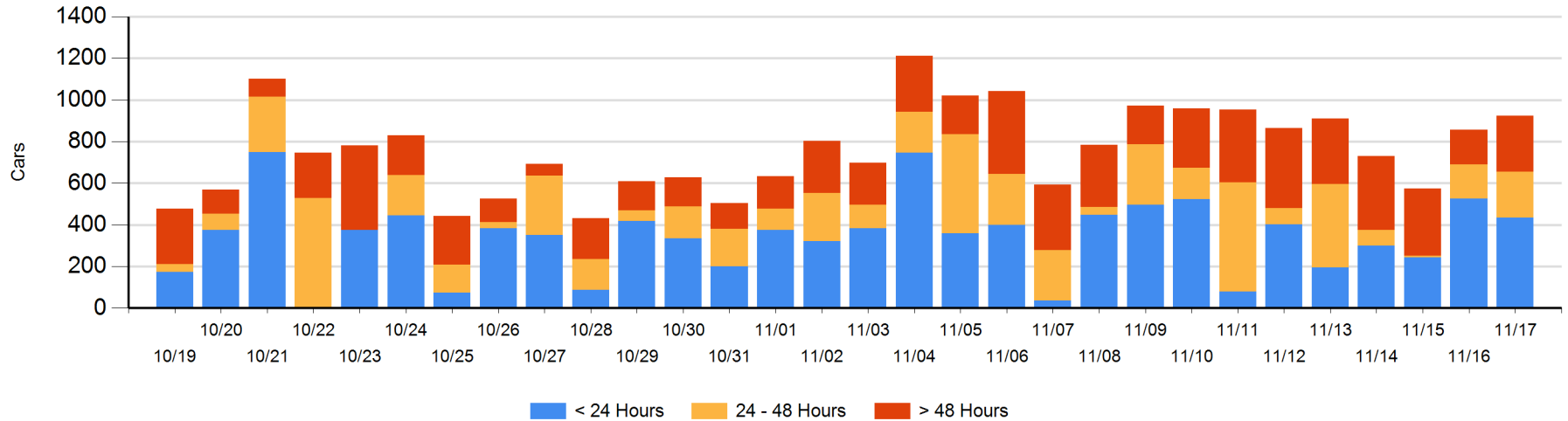
Today

	< 24 Hrs	24 - 48 Hrs	> 48-72 Hrs	> 72 Hrs	Total On Hand
CN	95	116	20	26	257
CP	339	105	124	100	668

Change in Last 24 Hours

	< 24 Hrs	24-48 Hrs	48 - 72 Hrs	> 72 Hrs
CN	-143	96	20	-1
CP	51	-38	116	-33

Loaded Cars on Hand Thunder Bay Waiting for Placement - Last 30 Days All Railways



Measurement Definitions

Loads on Wheels	<p>Count of loaded rail cars including all rail cars that have been released loaded at origin and have not been reported by the railway as unloaded at destination.</p> <p>Counts include all rail cars (hopper cars and boxcars) moving within a pipeline.</p>
Loads Not Moving	<p>Loaded rail cars for which the railways have not reported a movement event for 48 hours or more whether the rail car is at origin, enroute or at destination.</p>
Port Unloads	<p>Count of rail cars reported by railways as unloaded at the western port destinations of Vancouver, Prince Rupert and Thunder Bay.</p> <p>Unload counts include all rail cars (hopper cars and boxcars) unloaded by all receivers including major port terminals, transloaders and other receivers.</p>
Cars Arrived	<p>Count of rail cars reported as arrived at the destination railway terminal.</p>
Cars Received in Interchange	<p>Count of rail cars received in interchange by each railway within a destination railway terminal. Interchange activity is tracked for the Vancouver and Thunder Bay pipelines as applicable.</p>
Cars Delivered in Interchange	<p>Count of rail cars delivered in interchange by each railway within a destination railway terminal. Interchange activity is tracked for the Vancouver and Thunder Bay pipelines as applicable.</p>
Cars Placed for Unloading	<p>Count of rail cars reported by the railways as placed loaded at the receiver's facility for unloading.</p>
Loads on Wheels at Destination	<p>Count of rail cars that remain under load within the destination railway terminal including rail cars that have been reported as placed for unloading but not yet reported as unloaded.</p>
Waiting Placement for Unloading	<p>Count of rail cars that have been reported as arrived at the destination railway terminal but not reported as placed for unloading by the railway.</p> <p>For the Ports of Vancouver, Prince Rupert and Thunder Bay the count of rail cars waiting placement for unloading is categorized by age – i.e. the elapsed time from arrival at destination to the current report date.</p>