

**Note to Reader**

Operating employees at CN Rail went on strike effective at midnight on Tuesday November 19th. While negotiations continue, based on publicly available reporting, significant disruptions are expected to CN service. CP service is also likely to be impacted particularly in selected corridors such as Vancouver where the railways have joint operations. The immediate impact will likely be significant increases in idle car counts, particularly on CN, which have risen substantially for three consecutive days likely reflecting the railway's preparation for reduced operations.

Effective today CP has embargoed all traffic to and from CN interchanges. It has been reported that CN intends to use some management personnel to operate some trains, focusing on Intermodal traffic. (Source: Globe and Mail)

**SPEED READ**

- Loads on wheels fell overnight, reflecting a decline in both CN and CP volumes. On a net basis, volumes declined due to lower volumes across all corridors other than Prince Rupert.
- Network fluidity deteriorated overnight, led by a rise in idle car counts on CN by 51% (+698) offset by a decline in idle car counts on CP by 20% (-301). The total count of cars for 4+ days on both railways increased 23% (+145) overnight - presently at 777 cars.
- One day in Week 16 unloads now behind prior week's performance by 50 unloads, reflecting lower unloads at Vancouver and Prince Rupert offset by improved week over week performance at Thunder Bay.

=====

**Loads on Wheels**

- Loads on wheels fell 3% (-306) overnight and have now decreased for the third consecutive day, due to lower traffic on both CN and CP - combined total at 10,965 and 4% below the trailing 30-day average.
- On a net basis, the decline in loads on wheels indicates lower volumes across all corridors other than Prince Rupert.
- CN volumes fell 4% (-248) overnight, with reduced volumes in the Thunder Bay, E. Canada and USA/MEX corridors offset by higher volumes in the Prince Rupert and Vancouver corridors. System wide CN loads on wheels currently at 5,401 and 11% below the trailing 30-day average.
- CP volumes fell slightly by 1% (-48) overnight, driven by a decline in traffic in the Vancouver and E. Canada corridors offset by an increase in traffic in the USA/MEX and Thunder Bay corridors. CP system wide loads on wheels currently at 5,458 and 6% above the trailing 30-day average.
- Vancouver now at 5,550, decreased marginally by 1% (-78) overnight and have now decreased for the third consecutive day, now 7% below the trailing 30-day average.
- The Prince Rupert pipeline currently at 1,778, increased 2% (+29) overnight, and 3% below the trailing 30-day average.
- Thunder Bay volumes fell 6% (-168) overnight - currently at 2,528 and 9% above the trailing 30-day average, with 84% of traffic moving on CP.

**Hopper Car Rationing**

- No hopper cars were rationed by either CN or CP in week 14.

**Loads Not Moving**

- The count of cars not moving for 48+ hours gained 14% (+397) overnight and have now increased for the fourth consecutive day, reflecting higher counts on CN offset by lower counts on CP. Idle car counts currently at 3,254, the highest seen in the last 30 days, and 55% above the trailing 30-day average.
- CN

- **The count of idle cars for 48+ hours rose for the third consecutive day, up 51% (+698) overnight - currently at 2,067 cars.**
- The number of cars idle for 4+ days increased 45% (+208) overnight - currently at 671 cars.
- The count of cars not moving for 7+ days fell slightly by 1% (-1) overnight - currently at 186 cars.
- Vancouver represents 38% of all idle cars.
- In total 72% of all idle cars are dwelling at origin locations.
- CP
  - **CP idle car counts for 48+ hours decreased 20% (-301) overnight - now at 1,187 cars.**
  - The number of cars idle for 4+ days decreased 37% (-63) overnight - currently at 106 cars.
  - The number of cars idle for 7+ days decreased 56% (-27) overnight and have now decreased for the fifth consecutive day - presently at 21 cars.
  - Vancouver accounts for 74% of all idle cars.
  - In total 42% of all idle cars are dwelling at origin locations.

### Port Performance

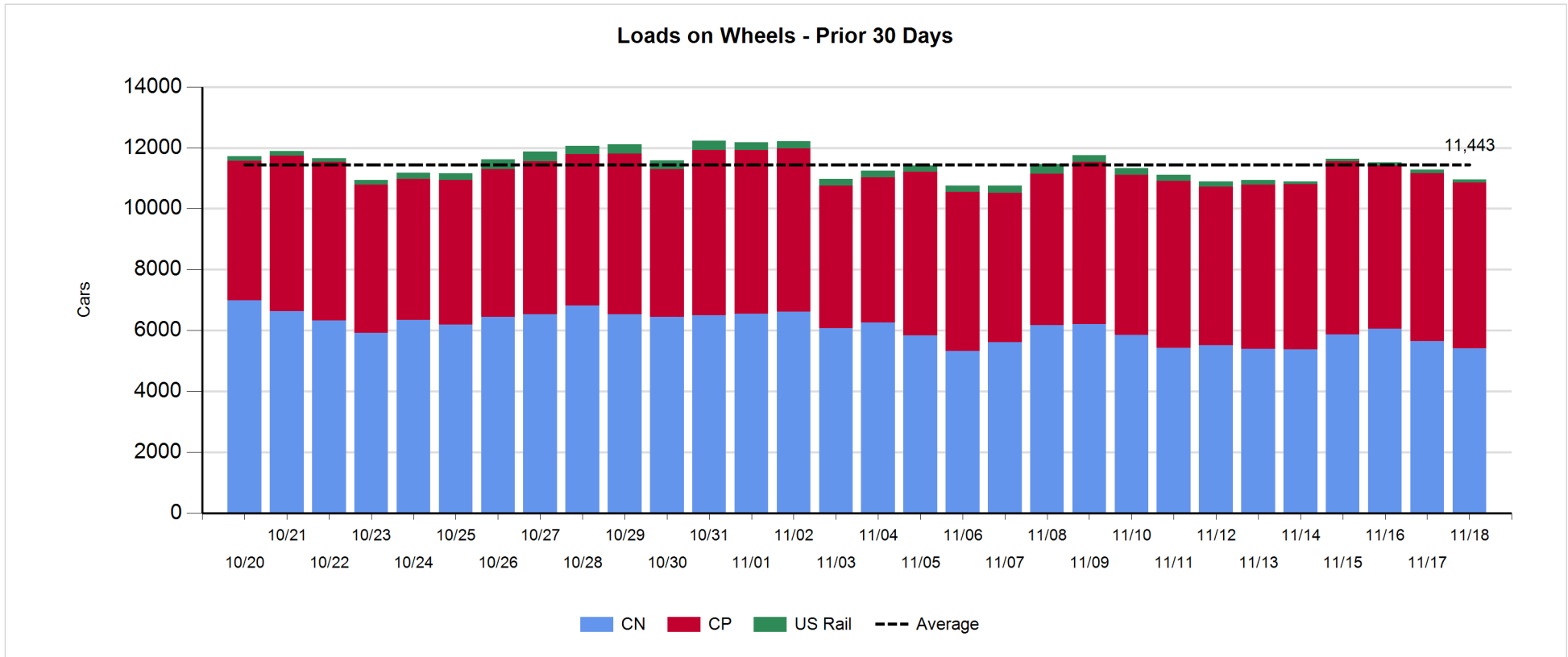
- CN and CP reported a total of 1,392 cars unloaded at the three major ports, 2% above the trailing 30-day average. One day in Week 16 unloads now behind last week's pace by 50 unloads, reflecting lower unloads at Vancouver and Prince Rupert offset by higher unloads at Thunder Bay.
- Vancouver
  - 812 unloads reported by CN and CP at the Port of Vancouver; CN - 337 and CP - 475. One day in Week 16 unloads are tracking behind last week's performance by 100 unloads.
  - There are 1,600 cars on site at Vancouver with 350 cars arriving at the port in the last 24 hours.
  - CN and CP have more than 850 cars in British Columbia en route to Vancouver, with fewer than 650 cars at Kamloops and west, and 54% of traffic moving on CP.
- Prince Rupert
  - Prince Rupert reported 171 unloads, now behind last week's unloads after one day by 50 unloads.
  - Loads on wheels remain above 1,000 cars - presently at 1,778 cars.
  - There are nearly 150 cars west of Jasper en route to Prince Rupert.
  - There are 250 cars on site at Prince Rupert with 200 cars arriving at the port in the last 24 hours.
- Thunder Bay
  - 409 unloads were reported at Thunder Bay yesterday. One day in Week 16 unloads are tracking ahead of last week's pace by 100 unloads.
  - There are 1,400 cars on site at Thunder Bay with 550 cars arriving at the port in the prior 24 hours.
  - There are 350 cars en route to Thunder Bay from Winnipeg and east.

**Daily Loads on Wheels - 11/18/2019**

	E Canada	Prince Rupert	Thunder Bay	USA/MEX	Vancouver	Total
CN	822	1,778	402	160	2,239	5,401
CP	1		2,126	55	3,276	5,458
Short Line					35	35
US Rail				71		71
	823	1,778	2,528	286	5,550	10,965

**Change in Loads on Wheels - Prior 24 Hours**

	E Canada	Prince Rupert	Thunder Bay	USA/MEX	Vancouver	Total
CN	-71		29	-192	-31	17
CP	-13		24	26	-85	-48
Short Line					-10	-10
US Rail				0		0
	-84		29	-168	-5	-78
						-306

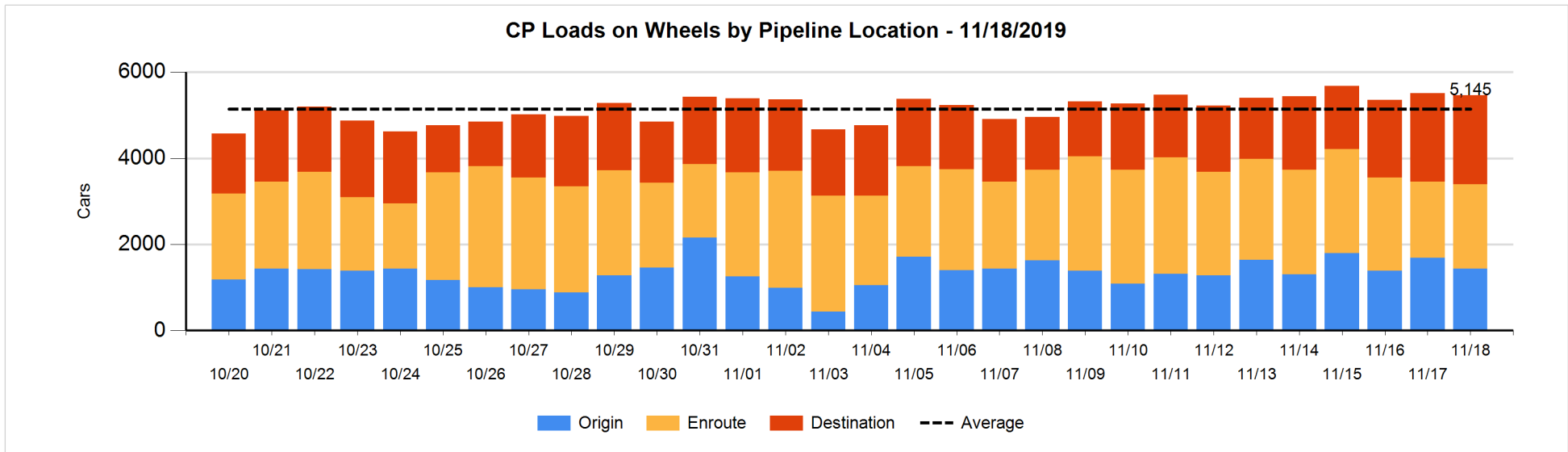
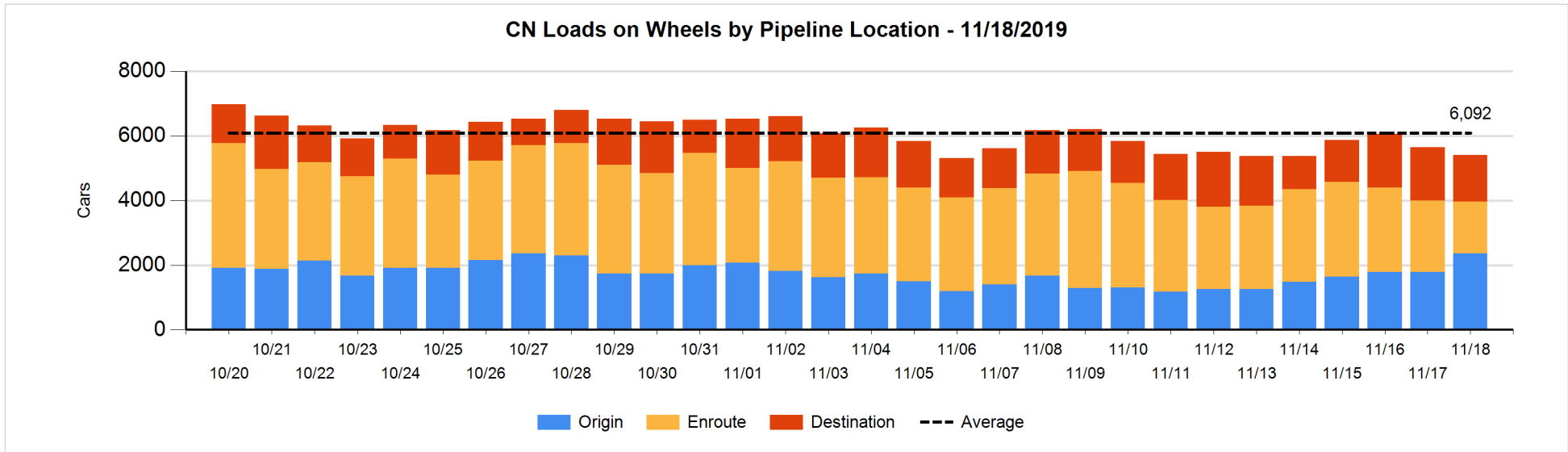


**Daily Loads on Wheels By Pipeline Location - 11/18/2019**

	E Canada	Prince Rupert	Thunder Bay	USA/MEX	Vancouver	Total
CN						
Origin	3	1,222		12	1,123	2,360
Enroute	548	307	20	127	609	1,611
Destination	271	249	382	21	507	1,430
	822	1,778	402	160	2,239	5,401
CP						
Origin			333	26	1,076	1,435
Enroute	1		780	29	1,151	1,961
Destination			1,013		1,049	2,062
	1		2,126	55	3,276	5,458
US Rail / Short Line						
Origin						
Enroute				64		64
Destination				7	35	42
				71	35	106

**Change in Daily Loads on Wheels By Pipeline Location - Prior 24 Hours**

	E Canada	Prince Rupert	Thunder Bay	USA/MEX	Vancouver	Total
CN						
Origin	3	200		1	365	569
Enroute	-177	-201	-123	-29	-64	-594
Destination	103	30	-69	-3	-284	-223
	-71	29	-192	-31	17	-248
CP						
Origin			-300	1	44	-255
Enroute	-13		119	25	61	192
Destination			205		-190	15
	-13		24	26	-85	-48
US Rail / Short Line						
Origin						
Enroute				0		0
Destination				0	-10	-10
				0	-10	-10

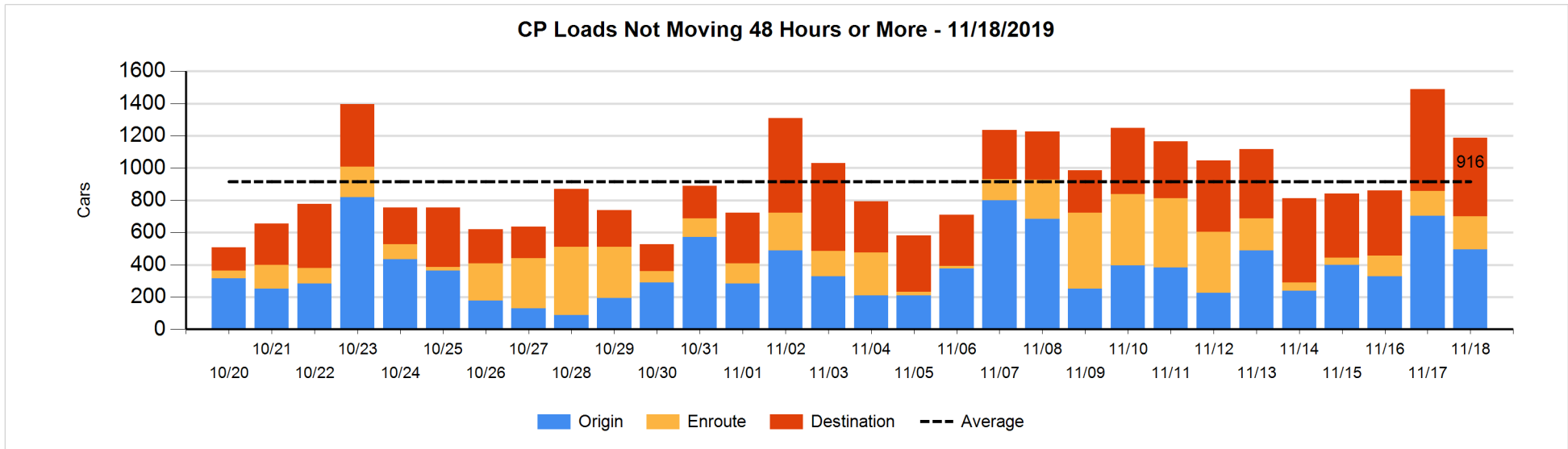
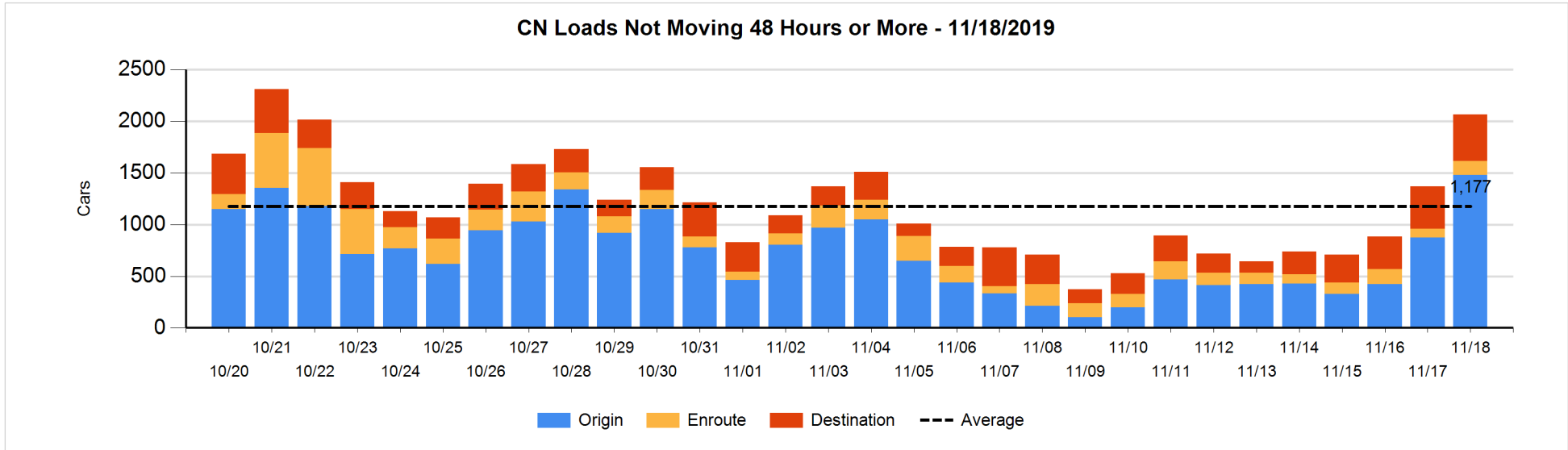


**Loads Not Moving 48 Hours or More - 11/18/2019**

	E Canada	Prince Rupert	Thunder Bay	USA/MEX	Vancouver	Total
<b>CN</b>						
Origin		919		11	552	1482
Enroute	93	5		22	12	132
Destination	54	85	81	12	221	453
	147	1009	81	45	785	2067
<b>CP</b>						
Origin				25	469	494
Enroute	1		12	4	190	207
Destination			268		218	486
	1		280	29	877	1187
<b>US Rail / Short Line</b>						
Origin						
Enroute				8		8
Destination				5	11	16
				13	11	24

**Change in Loads Not Moving 48 Hours or More - 11/18/2019**

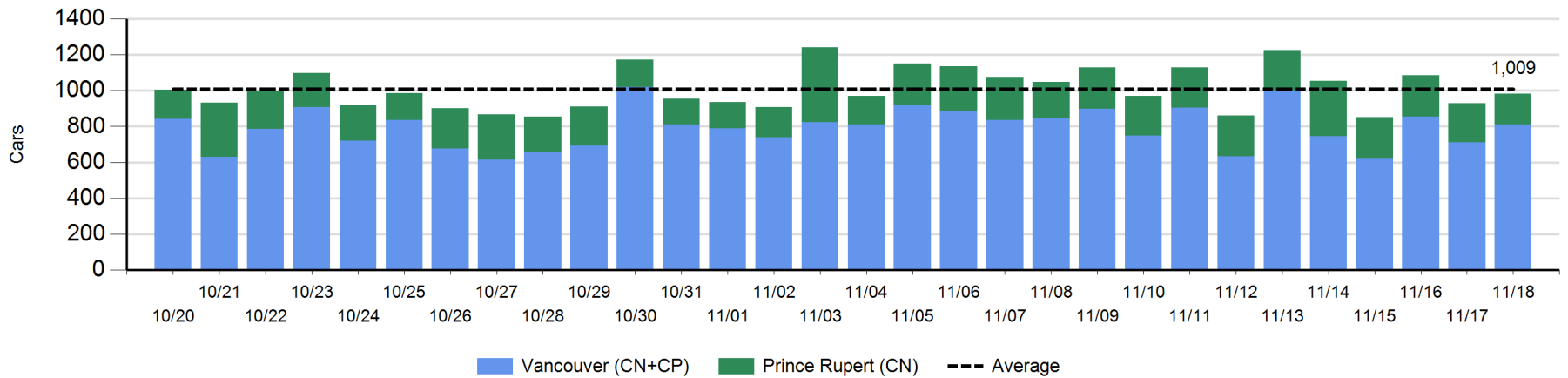
	E Canada	Prince Rupert	Thunder Bay	USA/MEX	Vancouver	Total
<b>CN</b>						
Origin		510		0	100	610
Enroute	61	0		0	-17	44
Destination	-70	0	10	-3	107	44
	-9	510	10	-3	190	698
<b>CP</b>						
Origin			-112	25	-121	-208
Enroute	0		-56	0	109	53
Destination			-84		-62	-146
	0		-252	25	-74	-301
<b>US Rail / Short Line</b>						
Origin						
Enroute				-3		-3
Destination				-2	-9	-11
				-5	-9	-14



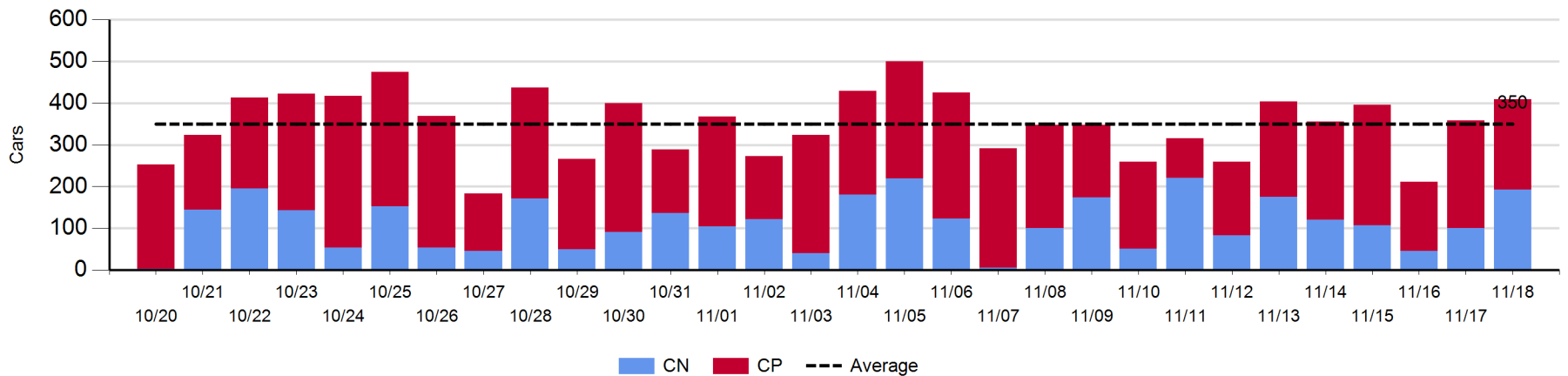
Port Unloads - 11/18/2019

	Prince Rupert	Vancouver	West Coast Total	Thunder Bay	Total
CN	171	337	508	192	700
CP		475	475	217	692
	171	812	983	409	1,392

West Coast Port Unloads - Prior 30 Days



Thunder Bay Port Unloads - Prior 30 Days





**Port Terminal Status**

**Vancouver**

Daily Activity for 11/18/2019

	Cars Arrived	Cars Received in Interchange	Cars Delivered in Interchange	Cars Placed for Unloading	Loads on Wheels at Destination As of 11/18/2019
CN	64	24	11	290	507
CP	275	11	37	506	1,049
SRY	1	13		17	35

**Port Unloads**

	11/18	11/17	Week To Date	Last Week
CN	337	288	337	2,567
CP	475	422	475	2,905
SRY	12	10	12	74

**Age Profile of Loaded Cars Waiting Placement for Unloading**

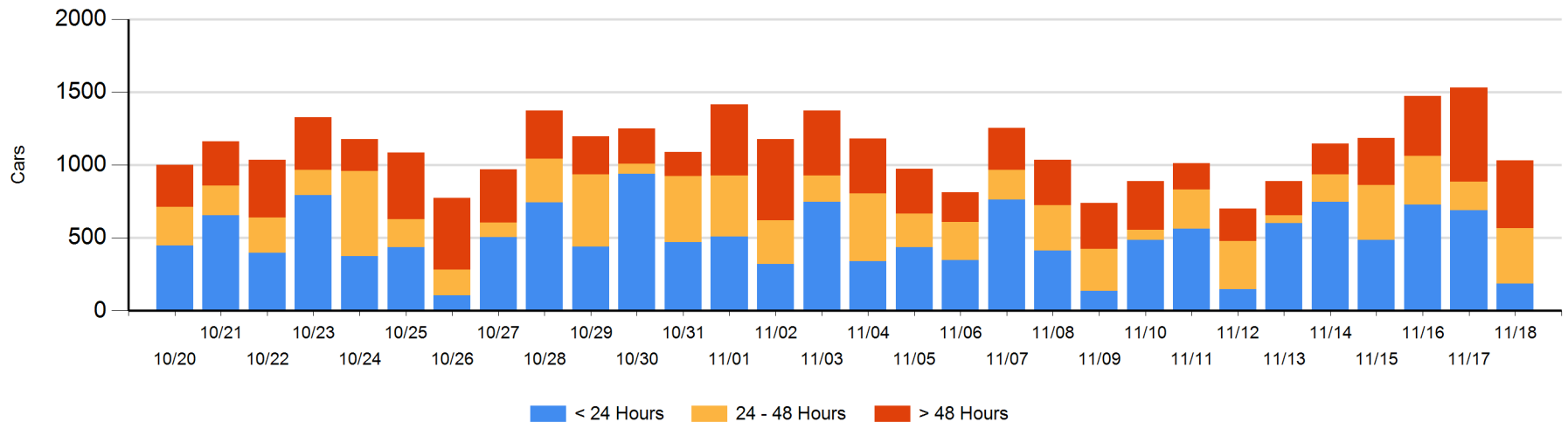
**Today**

	< 24 Hrs	24 - 48 Hrs	> 48-72 Hrs	> 72 Hrs	Total On Hand
CN	15	154	36	71	276
CP	172	224	46	313	755
SRY					0

**Change in Last 24 Hours**

	< 24 Hrs	24-48 Hrs	48 - 72 Hrs	> 72 Hrs
CN	-179	118	-109	9
CP	-324	64	-107	29
SRY				

**Loaded Cars on Hand Vancouver Waiting for Placement - Last 30 Days All Railways**



**Port Terminal Status**

**Prince Rupert**

Daily Activity for 11/18/2019

	Cars Arrived	Cars Received in Interchange	Cars Delivered in Interchange	Cars Placed for Unloading	Loads on Wheels at Destination As of 11/18/2019
CN	201			201	249

**Port Unloads**

	11/18	11/17	Week To Date	Last Week
CN	171	219	171	1,663

**Age Profile of Loaded Cars Waiting Placement for Unloading**

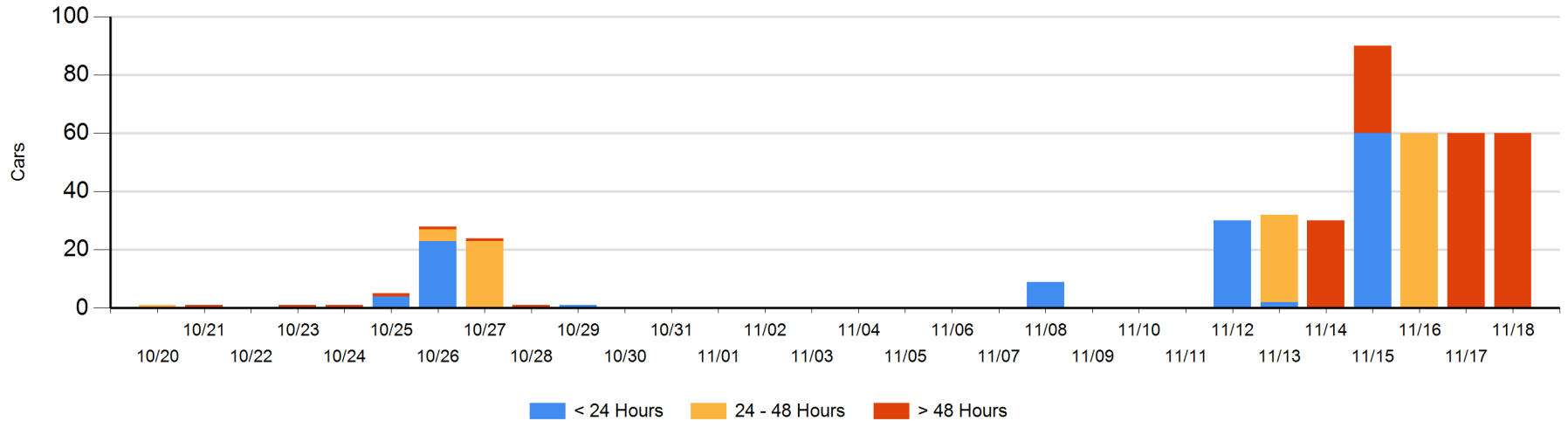
**Today**

	< 24 Hrs	24 - 48 Hrs	> 48-72 Hrs	> 72 Hrs	Total On Hand
CN				60	60

**Change in Last 24 Hours**

	< 24 Hrs	24-48 Hrs	48 - 72 Hrs	> 72 Hrs
CN			-60	60

Loaded Cars on Hand Prince Rupert Waiting for Placement - Last 30 Days All Railways



**Port Terminal Status**

**Thunder Bay**

Daily Activity for 11/18/2019

	Cars Arrived	Cars Received in Interchange	Cars Delivered in Interchange	Cars Placed for Unloading	Loads on Wheels at Destination As of 11/18/2019
CN	123			325	382
CP	422			260	1,013

**Port Unloads**

	11/18	11/17	Week To Date	Last Week
CN	192	100	192	851
CP	217	258	217	1,448

**Age Profile of Loaded Cars Waiting Placement for Unloading**

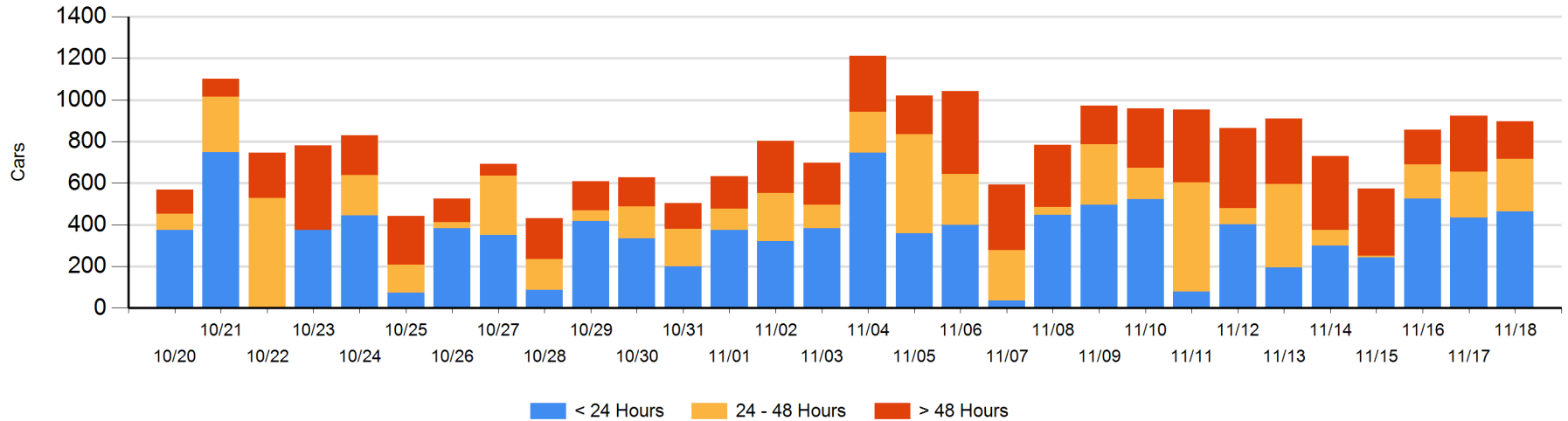
**Today**

	< 24 Hrs	24 - 48 Hrs	> 48-72 Hrs	> 72 Hrs	Total On Hand
CN	42			25	67
CP	422	252	90	67	831

**Change in Last 24 Hours**

	< 24 Hrs	24-48 Hrs	48 - 72 Hrs	> 72 Hrs
CN	-53	-116	-20	-1
CP	83	147	-34	-33

**Loaded Cars on Hand Thunder Bay Waiting for Placement - Last 30 Days All Railways**



## Measurement Definitions

Loads on Wheels	<p>Count of loaded rail cars including all rail cars that have been released loaded at origin and have not been reported by the railway as unloaded at destination.</p> <p>Counts include all rail cars (hopper cars and boxcars) moving within a pipeline.</p>
Loads Not Moving	<p>Loaded rail cars for which the railways have not reported a movement event for 48 hours or more whether the rail car is at origin, enroute or at destination.</p>
Port Unloads	<p>Count of rail cars reported by railways as unloaded at the western port destinations of Vancouver, Prince Rupert and Thunder Bay.</p> <p>Unload counts include all rail cars (hopper cars and boxcars) unloaded by all receivers including major port terminals, transloaders and other receivers.</p>
Cars Arrived	<p>Count of rail cars reported as arrived at the destination railway terminal.</p>
Cars Received in Interchange	<p>Count of rail cars received in interchange by each railway within a destination railway terminal. Interchange activity is tracked for the Vancouver and Thunder Bay pipelines as applicable.</p>
Cars Delivered in Interchange	<p>Count of rail cars delivered in interchange by each railway within a destination railway terminal. Interchange activity is tracked for the Vancouver and Thunder Bay pipelines as applicable.</p>
Cars Placed for Unloading	<p>Count of rail cars reported by the railways as placed loaded at the receiver's facility for unloading.</p>
Loads on Wheels at Destination	<p>Count of rail cars that remain under load within the destination railway terminal including rail cars that have been reported as placed for unloading but not yet reported as unloaded.</p>
Waiting Placement for Unloading	<p>Count of rail cars that have been reported as arrived at the destination railway terminal but not reported as placed for unloading by the railway.</p> <p>For the Ports of Vancouver, Prince Rupert and Thunder Bay the count of rail cars waiting placement for unloading is categorized by age – i.e. the elapsed time from arrival at destination to the current report date.</p>