

SPEED READ

- Loads on wheels increased overnight, marking an increase in both CN and CP volumes. On a net basis, volumes increased due to higher traffic in the Vancouver, Thunder Bay and USA/MEX corridors offset by reduced volumes in the Prince Rupert and E. Canada corridors.
- Network fluidity improved overnight, led by a decline in idle car counts on both CN and CP by 18% (-660) and 7% (-72), respectively. The total count of cars for 4+ days on both railways declined 27% (-1023) overnight and have now decreased for the third consecutive day - currently at 2,795 cars.
- Three days in Week 17 unloads now behind prior week's performance by 200 unloads, marking lower unloads at Thunder Bay and Prince Rupert offset by improved week over week performance at Vancouver.

Loads on Wheels

- Loads on wheels increased 3% (+326) overnight and have now increased for the third consecutive day, due to higher volumes on both CN and CP - combined total at 11,113 and 1% below the trailing 30-day average.
- On a net basis, the rise in loads on wheels reflects higher traffic in the Vancouver, Thunder Bay and USA/MEX corridors offset by reduced volumes in the Prince Rupert and E. Canada corridors.
- CN volumes increased 4% (+246) overnight and have now increased for the third consecutive day, with higher volumes in the Vancouver and USA/MEX corridors offset by reduced traffic in the Prince Rupert, E. Canada and Thunder Bay corridors. System wide CN loads on wheels currently at 6,325 and 7% above the trailing 30-day average.
- CP volumes increased slightly by 1% (+52) overnight, driven by a rise in volumes in the Thunder Bay corridor offset by a decline in volumes in all other corridors. CP system wide loads on wheels currently at 4,619 and 11% below the trailing 30-day average.
- Vancouver now at 5,374, increased 6% (+315) overnight, now 6% below the trailing 30-day average.
- The Prince Rupert pipeline now at 1,918, declined 5% (-100) overnight, and 6% above the trailing 30-day average.
- Thunder Bay volumes gained 4% (+84) overnight and have now increased for the third consecutive day - currently at 2,475 and 1% above the trailing 30-day average, with 78% of traffic moving on CP.

Hopper Car Rationing

- No hopper cars were rationed by either CN or CP in week 15.

Loads Not Moving

- **The count of cars not moving for 48+ hours declined for the third consecutive day, down 16% (-732) overnight, reflecting lower counts on both CN and CP. Idle car counts now at 3,869 and 35% above the trailing 30-day average.**
- CN
 - **The count of idle cars for 48+ hours fell 18% (-660) overnight and have now decreased for the third consecutive day - currently at 2,946 cars.**
 - The number of cars idle for 4+ days declined 26% (-841) overnight and have now decreased for the third consecutive day - now at 2,443 cars.
 - The count of cars not moving for 7+ days fell 25% (-531) overnight - now at 1,564 cars.
 - Vancouver represents 42% of all idle cars.
 - In total 77% of all idle cars are dwelling at origin locations.
- CP
 - **CP idle car counts for 48+ hours declined 7% (-72) overnight - currently at 923 cars.**

- The number of cars idle for 4+ days declined 34% (-182) overnight and have now decreased for the third consecutive day - currently at 352 cars.
- The number of cars idle for 7+ days fell 21% (-69) overnight - currently at 264 cars.
- Vancouver accounts for 60% of all idle cars.
- In total 27% of all idle cars are dwelling at origin locations.

Port Performance

- CN and CP reported a total of 992 cars unloaded at the three major ports, 22% below the trailing 30-day average. Three days in Week 17 unloads now behind last week's pace by 200 unloads, marking lower unloads at Thunder Bay and Prince Rupert offset by higher unloads at Vancouver.
- Vancouver
 - 577 unloads reported by CN and CP at the Port of Vancouver; CN - 64 and CP - 513. Three days in Week 17 unloads are tracking ahead of last week's performance by 100 unloads.
 - There are more than 850 cars on site at Vancouver with about 200 cars arriving at the port in the last 24 hours.
 - CN and CP have 450 cars in British Columbia en route to Vancouver, with more than 200 cars at Kamloops and west, and 53% of traffic moving on CP.
- Prince Rupert
 - Prince Rupert reported 100 unloads, now behind last week's unloads after three days by 50 unloads.
 - Loads on wheels remain above 1,000 cars - currently at 1,918 cars.
 - There are 550 cars west of Jasper en route to Prince Rupert.
 - There are fewer than 150 cars on site at Prince Rupert with 200 cars arriving at the port in the last 24 hours.
- Thunder Bay
 - 315 unloads were reported at Thunder Bay yesterday. Three days in Week 17 unloads are tracking behind last week's pace by 250 unloads.
 - There are 850 cars on site at Thunder Bay with 250 cars arriving at the port in the prior 24 hours.
 - There are more than 300 cars en route to Thunder Bay from Winnipeg and east.

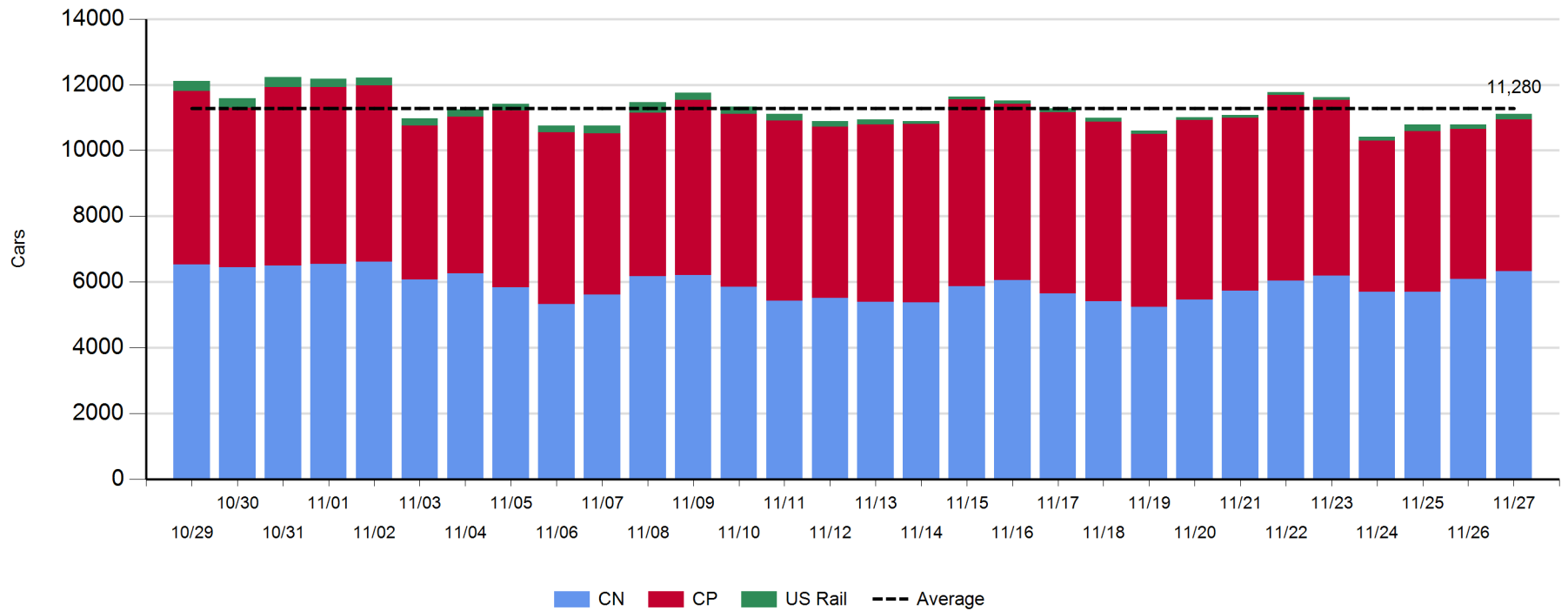
Daily Loads on Wheels - 11/27/2019

	E Canada	Prince Rupert	Thunder Bay	USA/MEX	Vancouver	Total
CN	920	1,918	543	123	2,821	6,325
CP	58		1,932	107	2,522	4,619
Short Line					31	31
US Rail				138		138
	978	1,918	2,475	368	5,374	11,113

Change in Loads on Wheels - Prior 24 Hours

	E Canada	Prince Rupert	Thunder Bay	USA/MEX	Vancouver	Total
CN	-5	-100	-2	6	347	246
CP	-11		86	-1	-22	52
Short Line					-10	-10
US Rail				38		38
	-16	-100	84	43	315	326

Loads on Wheels - Prior 30 Days

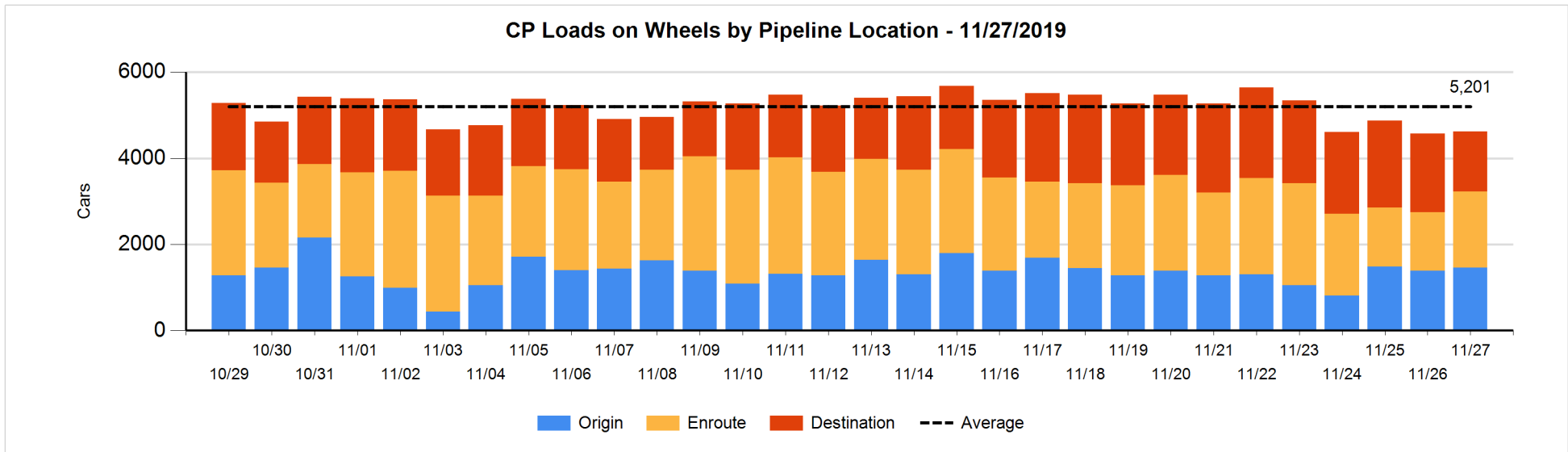
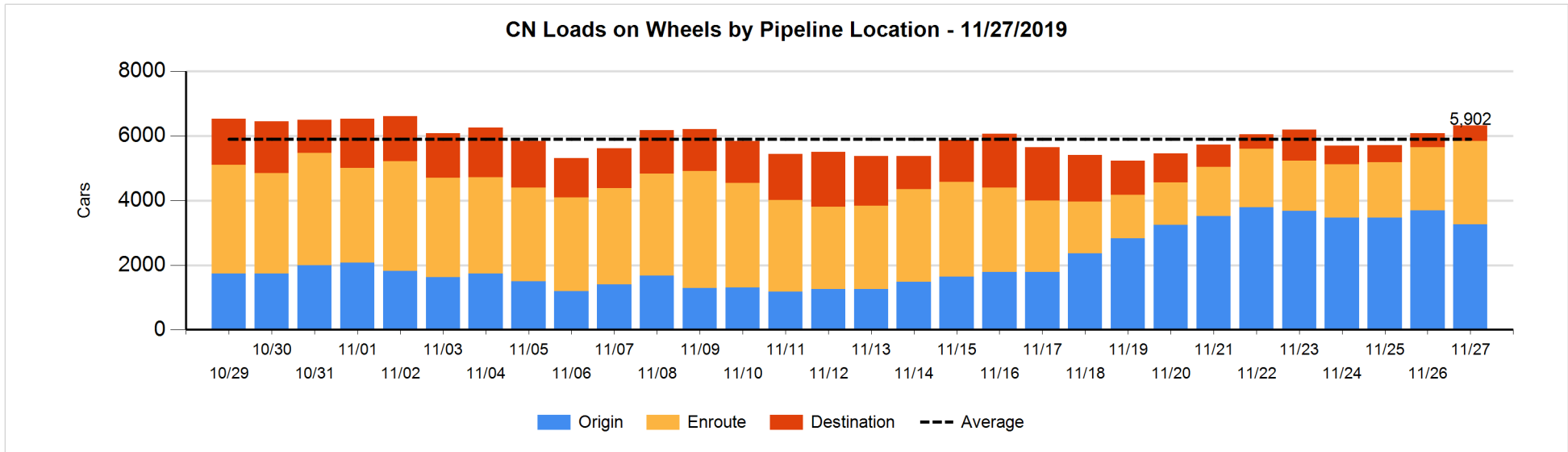


Daily Loads on Wheels By Pipeline Location - 11/27/2019

	E Canada	Prince Rupert	Thunder Bay	USA/MEX	Vancouver	Total
CN						
Origin	129	1,013	268	90	1,763	3,263
Enroute	748	767	206	26	829	2,576
Destination	43	138	69	7	229	486
	920	1,918	543	123	2,821	6,325
CP						
Origin			451	55	957	1,463
Enroute	57		708	52	949	1,766
Destination	1		773		616	1,390
	58		1,932	107	2,522	4,619
US Rail / Short Line						
Origin						
Enroute				123		123
Destination				15	31	46
				138	31	169

Change in Daily Loads on Wheels By Pipeline Location - Prior 24 Hours

	E Canada	Prince Rupert	Thunder Bay	USA/MEX	Vancouver	Total
CN						
Origin	-127	0	-202	7	-103	-425
Enroute	131	-199	202	0	479	613
Destination	-9	99	-2	-1	-29	58
	-5	-100	-2	6	347	246
CP						
Origin			23	2	52	77
Enroute	-11		128	-3	296	410
Destination	0		-65		-370	-435
	-11		86	-1	-22	52
US Rail / Short Line						
Origin						
Enroute				105		105
Destination				-67	-10	-77
				38	-10	28

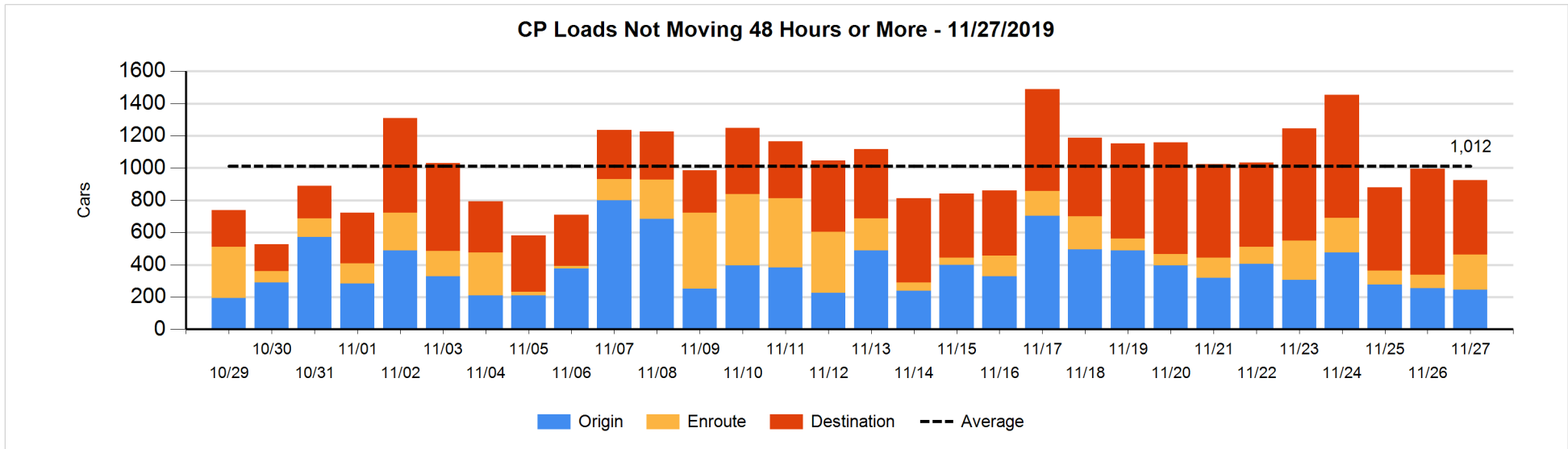
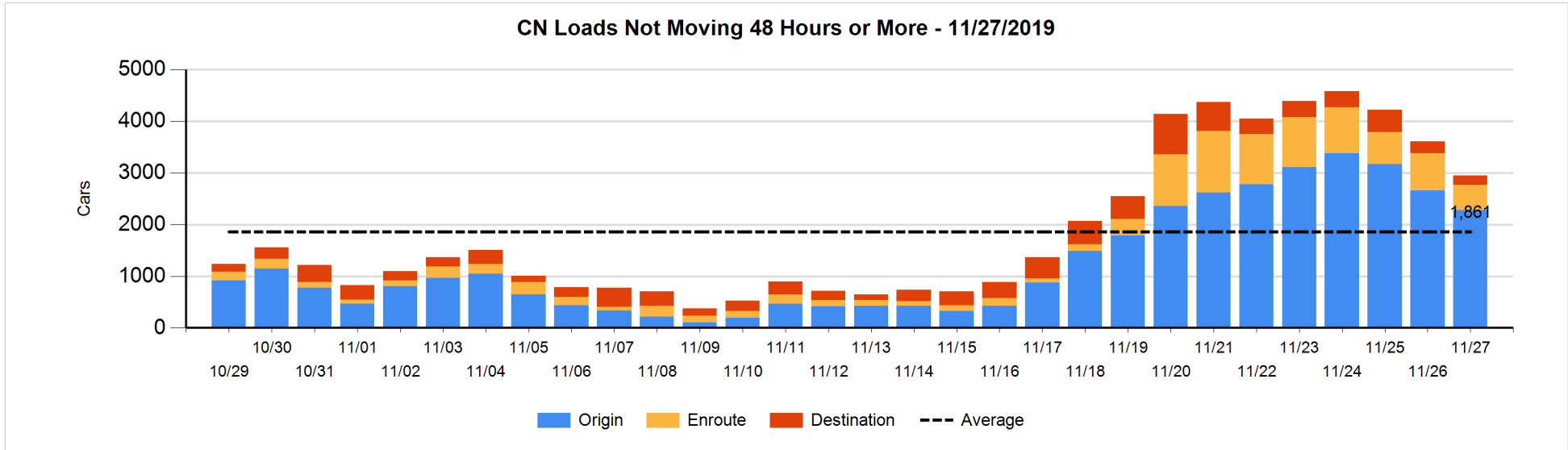


Loads Not Moving 48 Hours or More - 11/27/2019

	E Canada	Prince Rupert	Thunder Bay	USA/MEX	Vancouver	Total
CN						
Origin	53	810	200	74	1140	2277
Enroute	337	99	4	14	39	493
Destination	14	38	69	7	48	176
	404	947	273	95	1227	2946
CP						
Origin			52	52	141	245
Enroute			3	5	210	218
Destination	1		256		203	460
	1		311	57	554	923
US Rail / Short Line						
Origin						
Enroute				10		10
Destination				7	4	11
				17	4	21

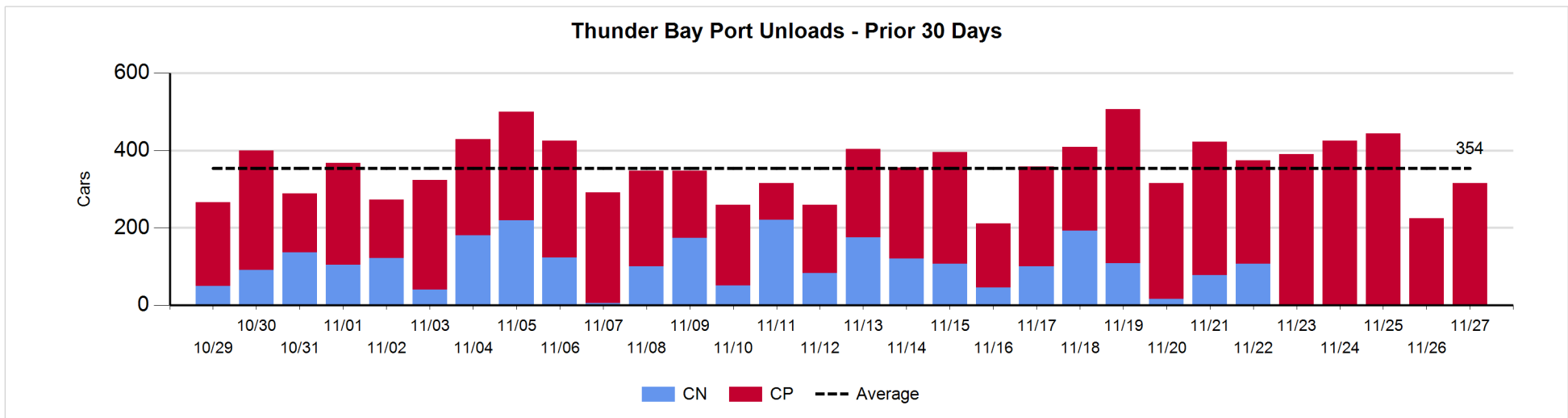
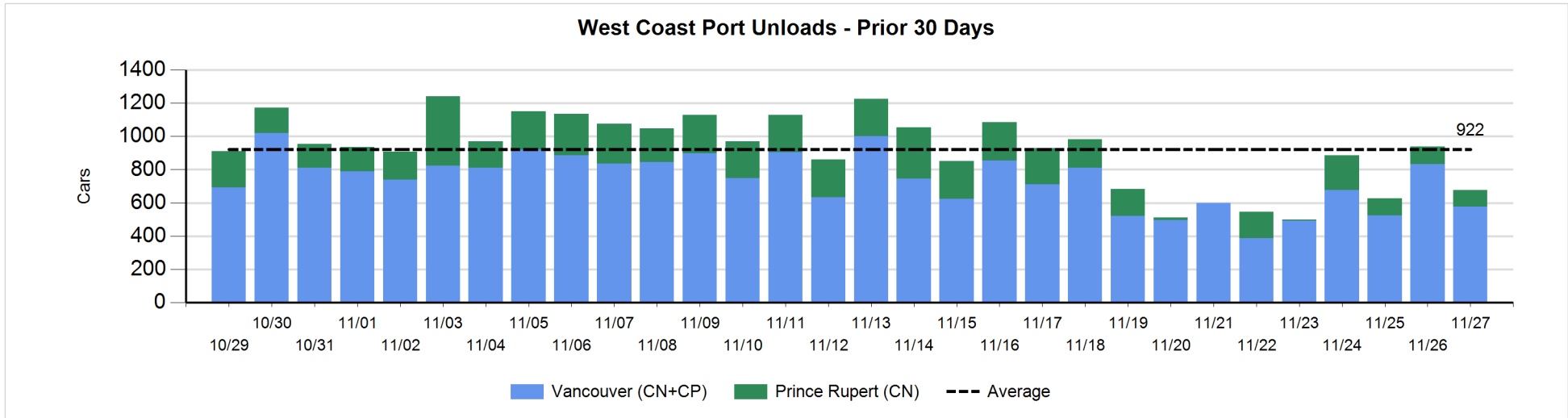
Change in Loads Not Moving 48 Hours or More - 11/27/2019

	E Canada	Prince Rupert	Thunder Bay	USA/MEX	Vancouver	Total
CN						
Origin	-25	197	-201	0	-354	-383
Enroute	-91	-11	0	-6	-122	-230
Destination	-31	0	40	0	-56	-47
	-147	186	-161	-6	-532	-660
CP						
Origin			16	50	-77	-11
Enroute	-11		1	-1	146	135
Destination	0		-122		-74	-196
	-11		-105	49	-5	-72
US Rail / Short Line						
Origin						
Enroute				-3		-3
Destination				-16	-3	-19
				-19	-3	-22



Port Unloads - 11/27/2019

	Prince Rupert	Vancouver	West Coast Total	Thunder Bay	Total
CN	100	64	164	2	166
CP		513	513	313	826
	100	577	677	315	992



Port Terminal Status

Vancouver

Daily Activity for 11/27/2019

	Cars Arrived	Cars Received in Interchange	Cars Delivered in Interchange	Cars Placed for Unloading	Loads on Wheels at Destination As of 11/27/2019
CN	39	11	5	80	229
CP	143		11	548	617
SRY	1	5		15	31

Port Unloads

	11/27	11/26	Week To Date	Last Week
CN	64	293	475	1,014
CP	513	541	1,459	2,969
SRY	16	12	36	62

Age Profile of Loaded Cars Waiting Placement for Unloading

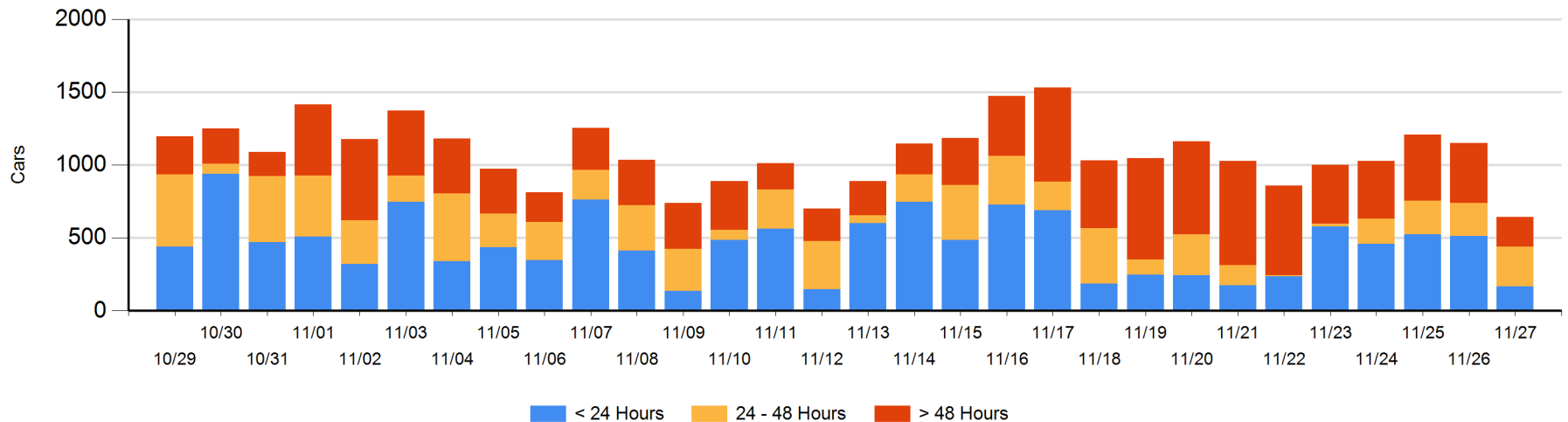
Today

	< 24 Hrs	24 - 48 Hrs	> 48-72 Hrs	> 72 Hrs	Total On Hand
CN	23	100		31	154
CP	143	175	36	137	491
SRY					0

Change in Last 24 Hours

	< 24 Hrs	24-48 Hrs	48 - 72 Hrs	> 72 Hrs
CN	-77	-27	-65	-42
CP	-270	75	-19	-80
SRY				

Loaded Cars on Hand Vancouver Waiting for Placement - Last 30 Days All Railways



Port Terminal Status

Prince Rupert

Daily Activity for 11/27/2019

	Cars Arrived	Cars Received in Interchange	Cars Delivered in Interchange	Cars Placed for Unloading	Loads on Wheels at Destination As of 11/27/2019
CN	199			199	138

Port Unloads

	11/27	11/26	Week To Date	Last Week
CN	100	105	309	726

Age Profile of Loaded Cars Waiting Placement for Unloading

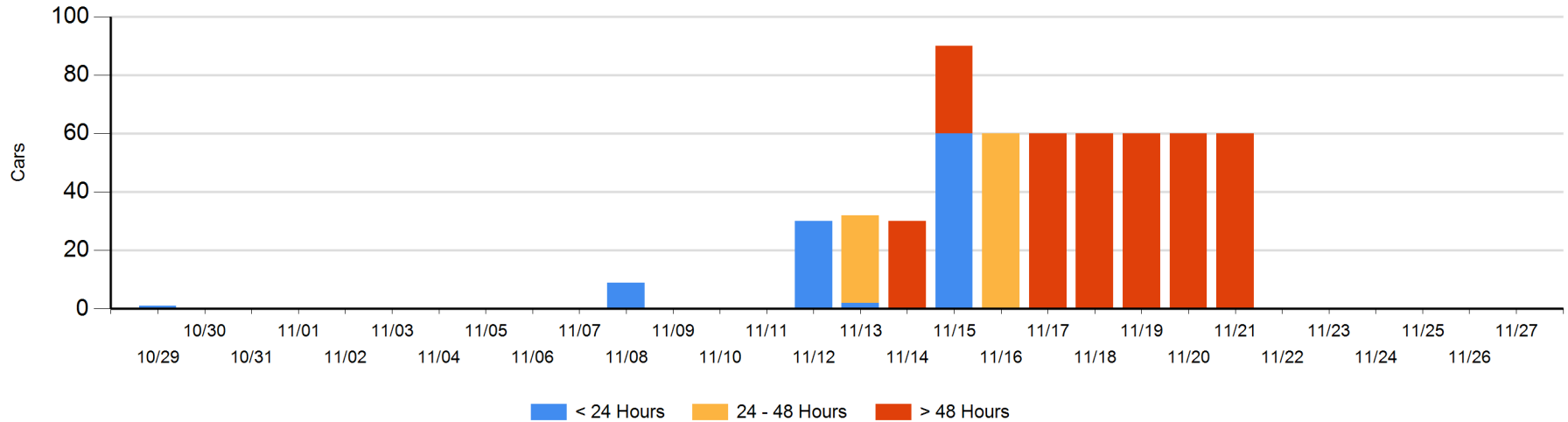
Today

	< 24 Hrs	24 - 48 Hrs	> 48-72 Hrs	> 72 Hrs	Total On Hand
CN					0

Change in Last 24 Hours

	< 24 Hrs	24-48 Hrs	48 - 72 Hrs	> 72 Hrs
CN				

Loaded Cars on Hand Prince Rupert Waiting for Placement - Last 30 Days All Railways



Port Terminal Status

Thunder Bay

Daily Activity for 11/27/2019

	Cars Arrived	Cars Received in Interchange	Cars Delivered in Interchange	Cars Placed for Unloading	Loads on Wheels at Destination As of 11/27/2019
CN					69
CP	248			395	773

Port Unloads

	11/27	11/26	Week To Date	Last Week
CN	2	1	3	502
CP	313	224	981	2,341

Age Profile of Loaded Cars Waiting Placement for Unloading

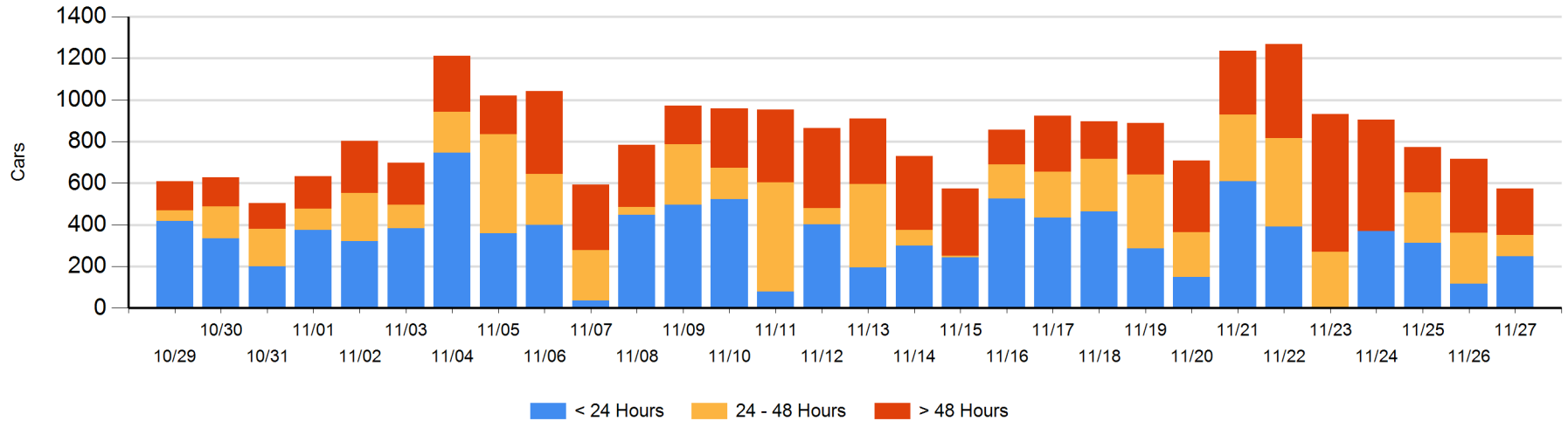
Today

	< 24 Hrs	24 - 48 Hrs	> 48-72 Hrs	> 72 Hrs	Total On Hand
CN					0
CP	248	104	134	89	575

Change in Last 24 Hours

	< 24 Hrs	24-48 Hrs	48 - 72 Hrs	> 72 Hrs
CN				
CP	131	-141	-56	-76

Loaded Cars on Hand Thunder Bay Waiting for Placement - Last 30 Days All Railways



Measurement Definitions

Loads on Wheels	<p>Count of loaded rail cars including all rail cars that have been released loaded at origin and have not been reported by the railway as unloaded at destination.</p> <p>Counts include all rail cars (hopper cars and boxcars) moving within a pipeline.</p>
Loads Not Moving	<p>Loaded rail cars for which the railways have not reported a movement event for 48 hours or more whether the rail car is at origin, enroute or at destination.</p>
Port Unloads	<p>Count of rail cars reported by railways as unloaded at the western port destinations of Vancouver, Prince Rupert and Thunder Bay.</p> <p>Unload counts include all rail cars (hopper cars and boxcars) unloaded by all receivers including major port terminals, transloaders and other receivers.</p>
Cars Arrived	<p>Count of rail cars reported as arrived at the destination railway terminal.</p>
Cars Received in Interchange	<p>Count of rail cars received in interchange by each railway within a destination railway terminal. Interchange activity is tracked for the Vancouver and Thunder Bay pipelines as applicable.</p>
Cars Delivered in Interchange	<p>Count of rail cars delivered in interchange by each railway within a destination railway terminal. Interchange activity is tracked for the Vancouver and Thunder Bay pipelines as applicable.</p>
Cars Placed for Unloading	<p>Count of rail cars reported by the railways as placed loaded at the receiver's facility for unloading.</p>
Loads on Wheels at Destination	<p>Count of rail cars that remain under load within the destination railway terminal including rail cars that have been reported as placed for unloading but not yet reported as unloaded.</p>
Waiting Placement for Unloading	<p>Count of rail cars that have been reported as arrived at the destination railway terminal but not reported as placed for unloading by the railway.</p> <p>For the Ports of Vancouver, Prince Rupert and Thunder Bay the count of rail cars waiting placement for unloading is categorized by age – i.e. the elapsed time from arrival at destination to the current report date.</p>