

## SPEED READ

- Loads on wheels declined overnight, reflecting a decline in both CN and CP volumes. On a net basis, volumes declined due to lower volumes across all corridors other than Thunder Bay.
- Network fluidity improved overnight, led by a decline in idle car counts on both CN and CP by 41% (-75) and 34% (-225), respectively. The total count of cars for 4+ days on both railways increased 65% (+112) overnight - now at 285 cars.
- Two days in Week 9 unloads now ahead of prior week's performance by nearly 300 unloads, reflecting improved week over week performance at Prince Rupert and Vancouver offset by reduced unloads at Thunder Bay.

---

## Loads on Wheels

- Loads on wheels declined 7% (-590) overnight, due to lower volumes on both CN and CP - combined total at 8,434 and 16% above the trailing 30-day average.
- On a net basis, the decline in loads on wheels reflects lower volumes across all corridors other than Thunder Bay.
- CN volumes declined 7% (-304) overnight, with lower traffic across all corridors other than Thunder Bay. System wide CN loads on wheels presently at 4,155 and 20% above the trailing 30-day average.
- CP volumes decreased 5% (-236) overnight, driven by a decline in traffic in the USA/Mexico and Vancouver corridors. CP system wide loads on wheels currently at 4,110 and 12% above the trailing 30-day average.
- Vancouver presently at 3,610, declined 12% (-470) overnight and have now decreased for the fourth consecutive day, now 12% below the trailing 30-day average.
- The Prince Rupert pipeline presently at 1,473, fell 12% (-194) overnight, and 70% above the trailing 30-day average.
- Thunder Bay volumes increased 8% (+161) overnight and have now increased for the sixth consecutive day - currently at 2,225, the highest seen in the last 30 days, and 77% above the trailing 30-day average, with 75% of traffic moving on CP.

## Hopper Car Rationing

- No hopper cars were rationed by either CN or CP in week 7.

## Loads Not Moving

- **The count of cars not moving for 48+ hours declined 35% (-300) overnight, reflecting lower counts on both CN and CP. Idle car counts now at 551 and 23% below the trailing 30-day average.**
- CN
  - **The count of idle cars for 48+ hours declined 41% (-75) overnight - currently at 106 cars, the lowest seen in the last 30 days.**
  - The number of cars idle for 4+ days rose 56% (+15) overnight - currently at 42 cars.
  - The count of cars not moving for 7+ days remained unchanged overnight - currently at 8 cars, the lowest seen in the last 30 days.
  - Vancouver represents 29% of all idle cars.
  - In total 24% of all idle cars are dwelling at origin locations.
- CP
  - **CP idle car counts for 48+ hours fell 34% (-225) overnight - now at 445 cars.**
  - The number of cars idle for 4+ days increased 66% (+97) overnight - presently at 243 cars.

- The number of cars idle for 7+ days declined 25% (-12) overnight - presently at 36 cars.
- Vancouver accounts for 60% of all idle cars.
- In total 26% of all idle cars are dwelling at origin locations.

### **Port Performance**

- CN and CP reported a total of 1,418 cars unloaded at the three major ports, 44% above the trailing 30-day average. Two days in Week 9 unloads now ahead of last week's pace by around 300 unloads, reflecting higher unloads at Prince Rupert and Vancouver offset by reduced unloads at Thunder Bay.
- Vancouver
  - 825 unloads reported by CN and CP at the Port of Vancouver; CN - 373 and CP - 452. Two days in Week 9 unloads are tracking ahead of last week's performance by about 150 unloads.
  - There are 1,150 cars on site at Vancouver with 650 cars arriving at the port in the last 24 hours.
  - CN and CP have around 600 cars in British Columbia en route to Vancouver, with more than 400 cars at Kamloops and west, and 53% of traffic moving on CN.
- Prince Rupert
  - Prince Rupert reported 197 unloads, now ahead of last week's unloads after two days by more than 150 unloads.
  - Loads on wheels now above 1,000 cars - now at 1,473 cars.
  - There are 450 cars west of Jasper en route to Prince Rupert.
  - There are more than 150 cars on site at Prince Rupert with 200 cars arriving at the port in the last 24 hours.
- Thunder Bay
  - 396 unloads were reported at Thunder Bay yesterday. Two days in Week 9 unloads are tracking slightly behind last week's pace.
  - There are 700 cars on site at Thunder Bay with more than 300 cars arriving at the port in the prior 24 hours.
  - There are 400 cars en route to Thunder Bay from Winnipeg and east.

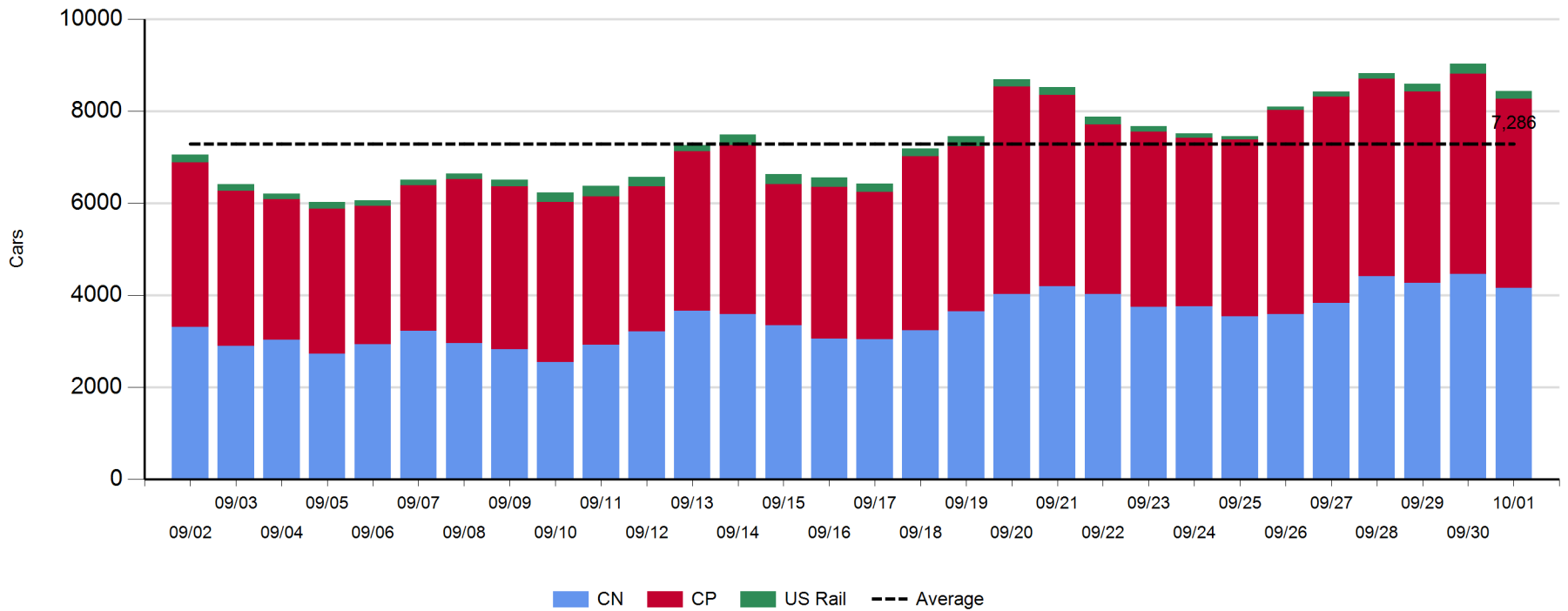
**Daily Loads on Wheels - 10/1/2019**

	E Canada	Prince Rupert	Thunder Bay	USA/MEX	Vancouver	Total
CN	488	1,473	553	242	1,399	4,155
CP	11		1,672	260	2,167	4,110
Short Line	7				44	51
US Rail				118		118
	506	1,473	2,225	620	3,610	8,434

**Change in Loads on Wheels - Prior 24 Hours**

	E Canada	Prince Rupert	Thunder Bay	USA/MEX	Vancouver	Total
CN	-8	-194	66	-19	-149	-304
CP	0		95	-12	-319	-236
Short Line	-2				-2	-4
US Rail				-46		-46
	-10	-194	161	-77	-470	-590

**Loads on Wheels - Prior 30 Days**



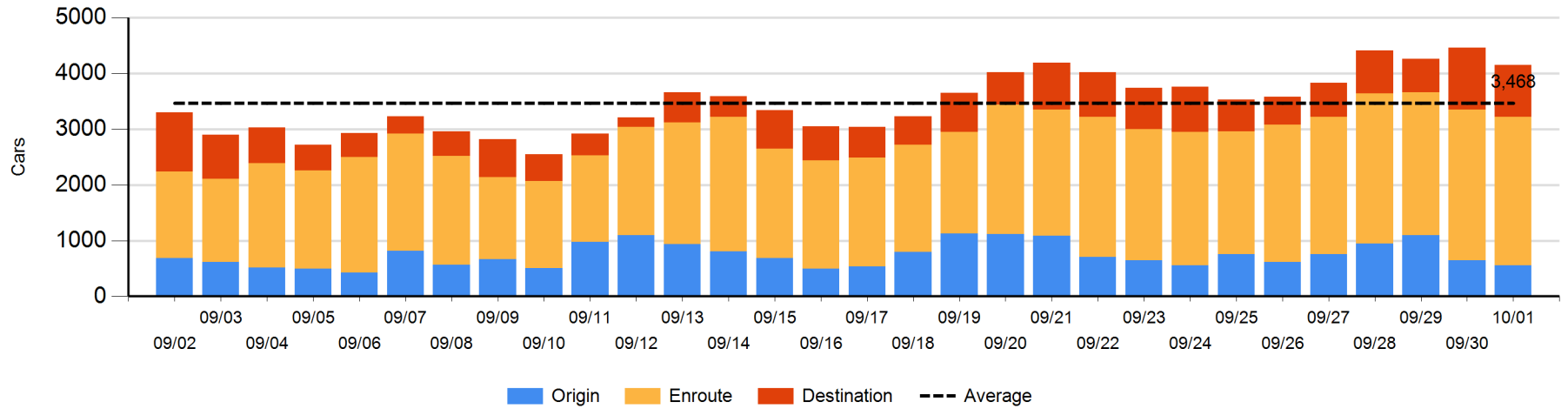
**Daily Loads on Wheels By Pipeline Location - 10/1/2019**

	E Canada	Prince Rupert	Thunder Bay	USA/MEX	Vancouver	Total
CN						
Origin	78	43	201	5	230	557
Enroute	388	1,268	101	196	711	2,664
Destination	22	162	251	41	458	934
	488	1,473	553	242	1,399	4,155
CP						
Origin	3		557	2	708	1,270
Enroute	8		672	258	803	1,741
Destination			443		656	1,099
	11		1,672	260	2,167	4,110
US Rail / Short Line						
Origin						
Enroute				46		46
Destination	7			72	44	123
	7			118	44	169

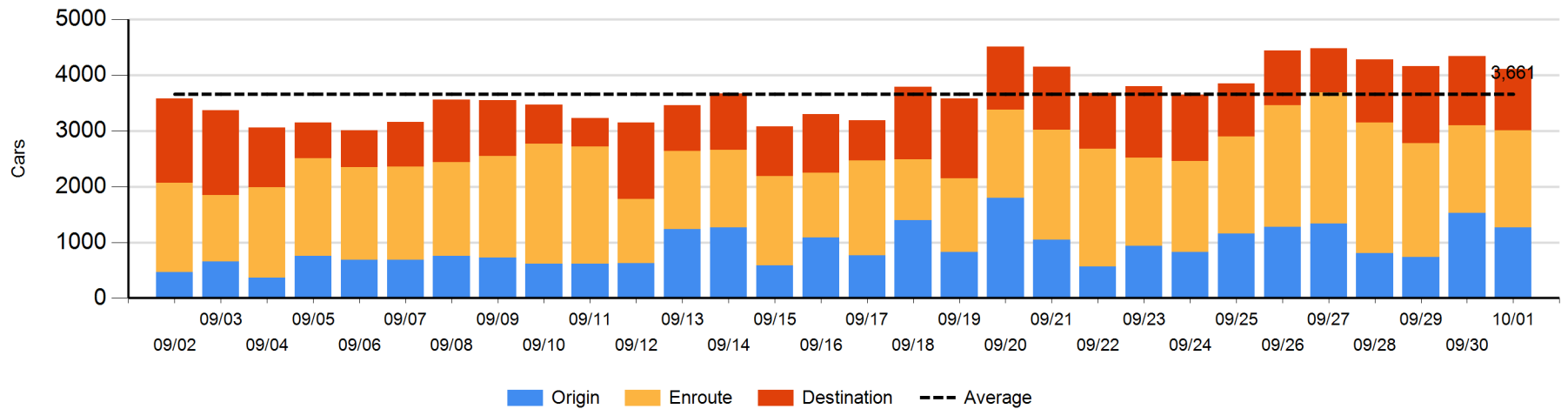
**Change in Daily Loads on Wheels By Pipeline Location - Prior 24 Hours**

	E Canada	Prince Rupert	Thunder Bay	USA/MEX	Vancouver	Total
CN						
Origin	75	-282	201	-106	26	-86
Enroute	-55	93	-89	102	-92	-41
Destination	-28	-5	-46	-15	-83	-177
	-8	-194	66	-19	-149	-304
CP						
Origin	0		-93	-99	-62	-254
Enroute	0		223	100	-153	170
Destination			-35	-13	-104	-152
	0		95	-12	-319	-236
US Rail / Short Line						
Origin						
Enroute				4		4
Destination	-2			-50	-2	-54
	-2			-46	-2	-50

**CN Loads on Wheels by Pipeline Location - 10/1/2019**



**CP Loads on Wheels by Pipeline Location - 10/1/2019**

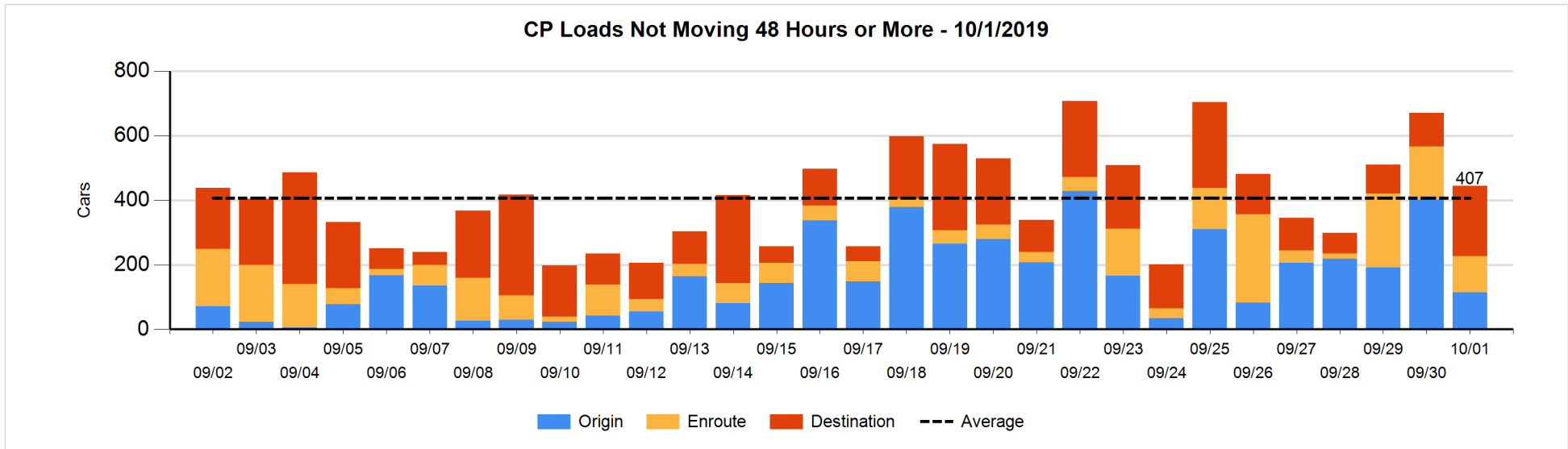
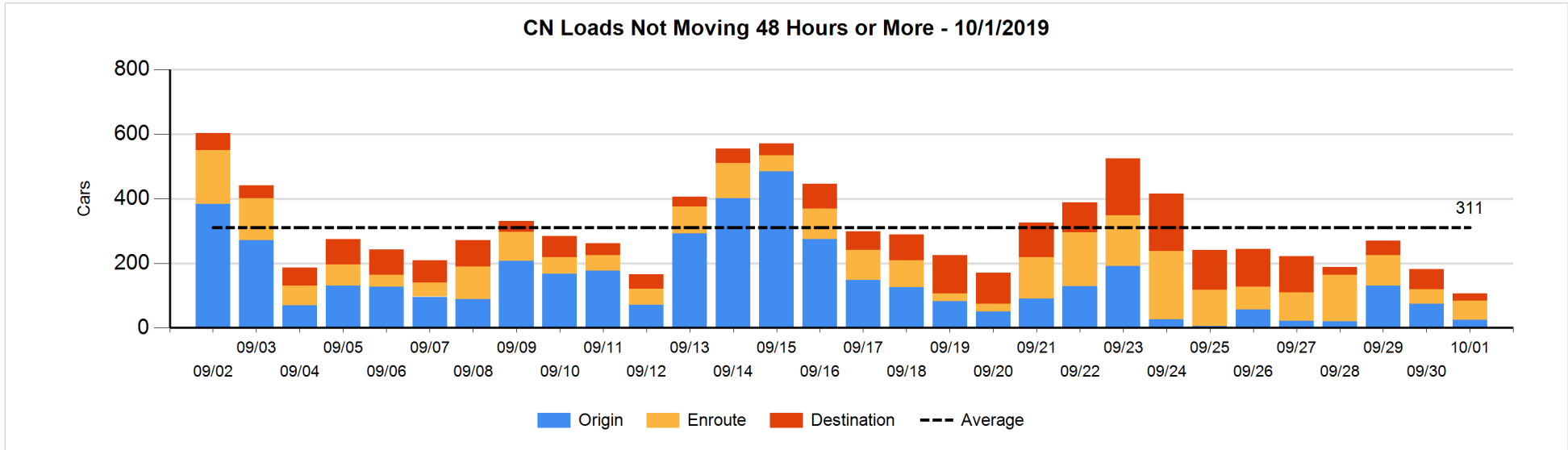


**Loads Not Moving 48 Hours or More - 10/1/2019**

	E Canada	Prince Rupert	Thunder Bay	USA/MEX	Vancouver	Total
<b>CN</b>						
Origin		15			10	25
Enroute	22	20	1	2	14	59
Destination	9		2	4	7	22
	31	35	3	6	31	106
<b>CP</b>						
Origin					115	115
Enroute			1	97	13	111
Destination			78		141	219
			79	97	269	445
<b>US Rail / Short Line</b>						
Origin						
Enroute				12		12
Destination	1			14	5	20
	1			26	5	32

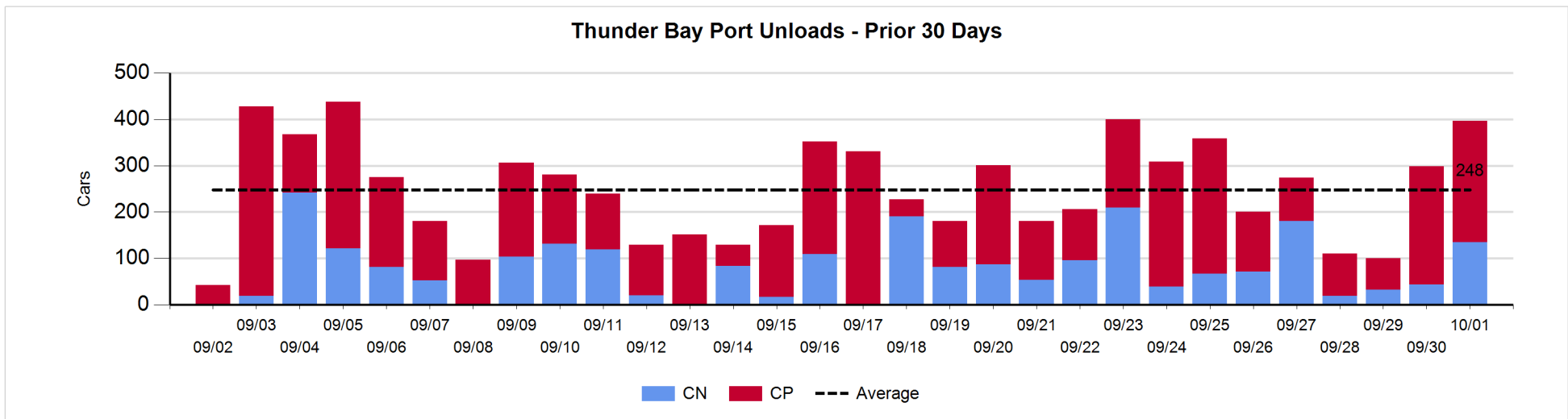
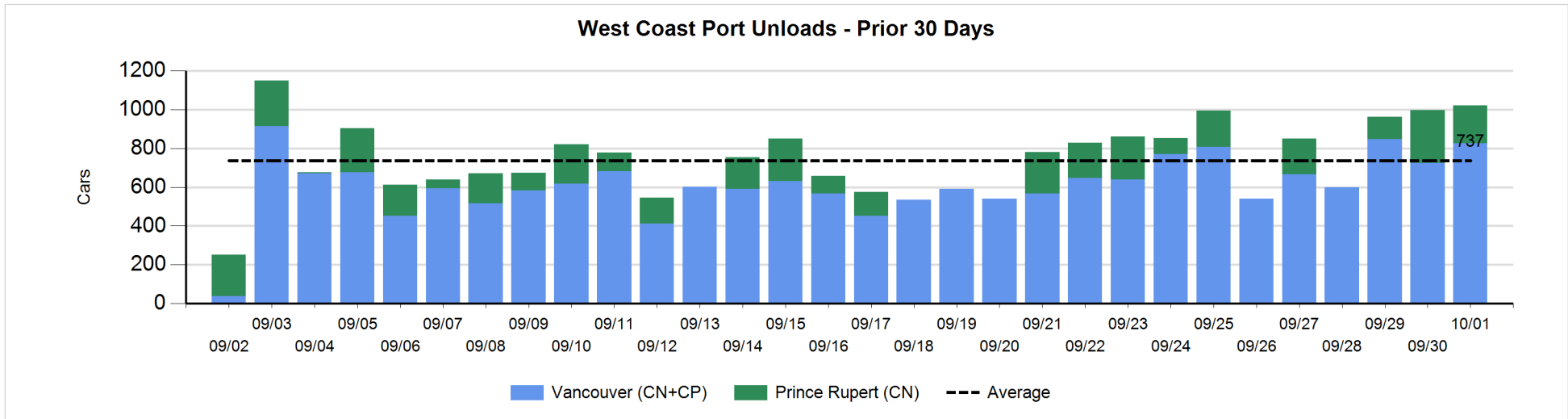
**Change in Loads Not Moving 48 Hours or More - 10/1/2019**

	E Canada	Prince Rupert	Thunder Bay	USA/MEX	Vancouver	Total
<b>CN</b>						
Origin		15		-55	-9	-49
Enroute	4	9	0	1	0	14
Destination	-22		1	-1	-18	-40
	-18	24	1	-55	-27	-75
<b>CP</b>						
Origin			-10	-101	-175	-286
Enroute			0	-2	-52	-54
Destination			78	-1	38	115
			68	-104	-189	-225
<b>US Rail / Short Line</b>						
Origin						
Enroute				-4		-4
Destination	-3			-2	1	-4
	-3			-6	1	-8



**Port Unloads - 10/1/2019**

	Prince Rupert	Vancouver	West Coast Total	Thunder Bay	Total
CN	197	373	570	135	705
CP		452	452	261	713
	197	825	1,022	396	1,418





## Port Terminal Status

### Vancouver

Daily Activity for 10/1/2019

	Cars Arrived	Cars Received in Interchange	Cars Delivered in Interchange	Cars Placed for Unloading	Loads on Wheels at Destination As of 10/1/2019
CN	197	106	6	432	459
CP	448		106	369	656
SRY		6		8	44

### Port Unloads

	10/01	09/30	Week To Date	Last Week
CN	373	259	632	1,871
CP	452	465	917	2,994
SRY	8	3	11	38

## Age Profile of Loaded Cars Waiting Placement for Unloading

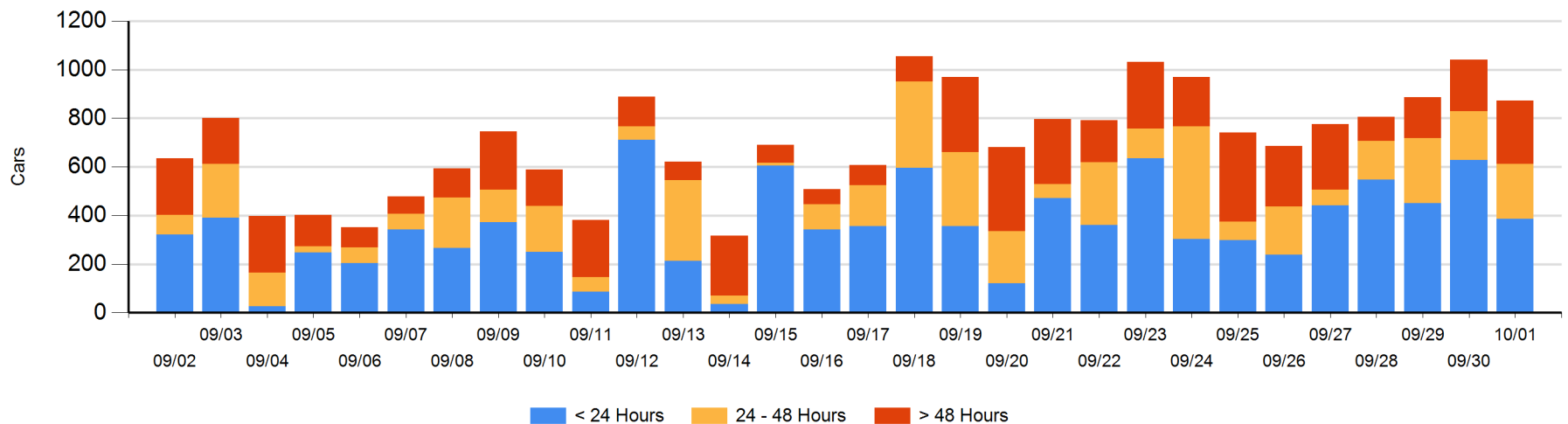
### Today

	< 24 Hrs	24 - 48 Hrs	> 48-72 Hrs	> 72 Hrs	Total On Hand
CN	147	88	45	45	325
CP	239	139	121	49	548
SRY					0

### Change in Last 24 Hours

	< 24 Hrs	24-48 Hrs	48 - 72 Hrs	> 72 Hrs
CN	-227	42	19	-13
CP	-16	-14	66	-24
SRY				

Loaded Cars on Hand Vancouver Waiting for Placement - Last 30 Days All Railways



**Port Terminal Status**

**Prince Rupert**

Daily Activity for 10/1/2019

	Cars Arrived	Cars Received in Interchange	Cars Delivered in Interchange	Cars Placed for Unloading	Loads on Wheels at Destination As of 10/1/2019
CN	192			192	162

**Port Unloads**

	10/01	09/30	Week To Date	Last Week
CN	197	274	471	793

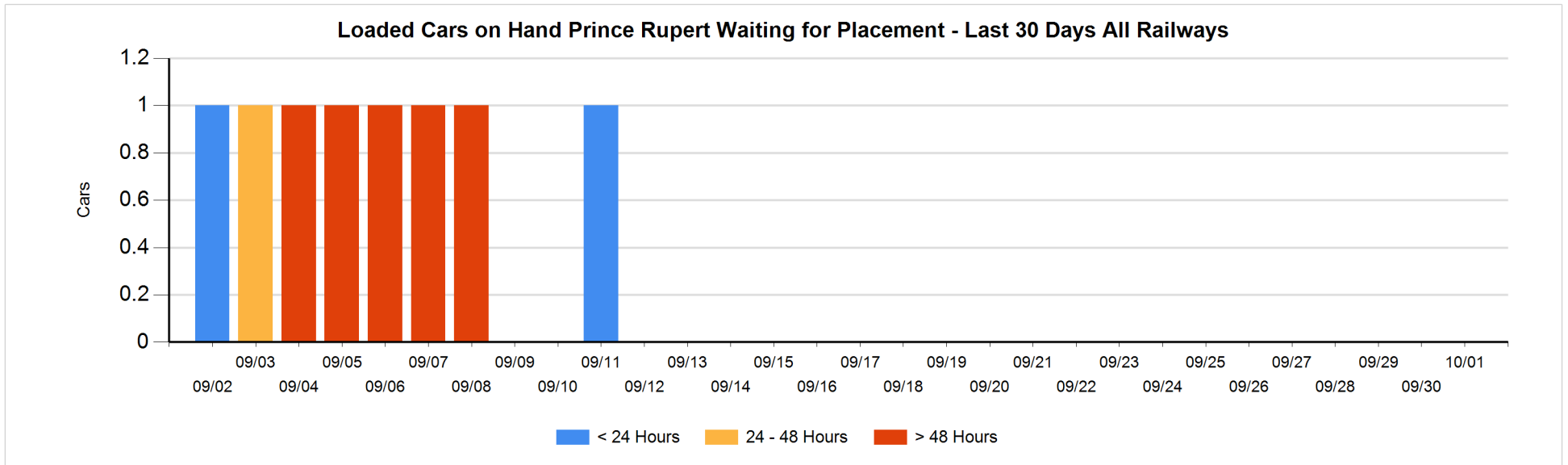
**Age Profile of Loaded Cars Waiting Placement for Unloading**

**Today**

	< 24 Hrs	24 - 48 Hrs	> 48-72 Hrs	> 72 Hrs	Total On Hand
CN					0

**Change in Last 24 Hours**

	< 24 Hrs	24-48 Hrs	48 - 72 Hrs	> 72 Hrs
CN				



**Port Terminal Status**

**Thunder Bay**

Daily Activity for 10/1/2019

	Cars Arrived	Cars Received in Interchange	Cars Delivered in Interchange	Cars Placed for Unloading	Loads on Wheels at Destination As of 10/1/2019
CN	89			104	251
CP	226			268	443

**Port Unloads**

	10/01	09/30	Week To Date	Last Week
CN	135	44	179	617
CP	261	255	516	1,135

**Age Profile of Loaded Cars Waiting Placement for Unloading**

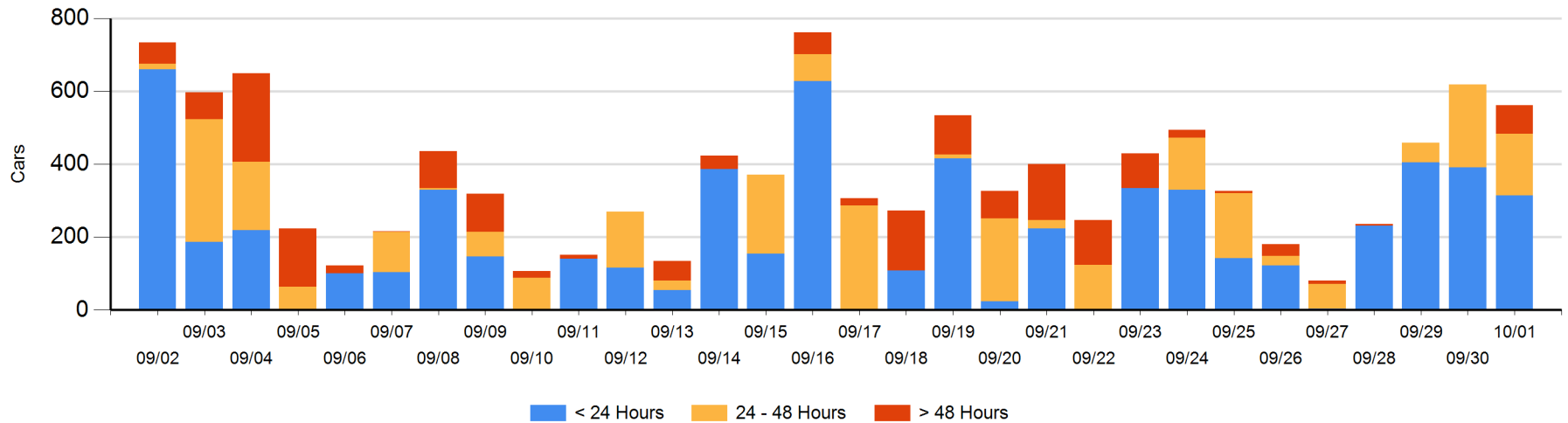
**Today**

	< 24 Hrs	24 - 48 Hrs	> 48-72 Hrs	> 72 Hrs	Total On Hand
CN	89	42			131
CP	226	127	78		431

**Change in Last 24 Hours**

	< 24 Hrs	24-48 Hrs	48 - 72 Hrs	> 72 Hrs
CN	-31	16		
CP	-45	-75	78	

Loaded Cars on Hand Thunder Bay Waiting for Placement - Last 30 Days All Railways



## Measurement Definitions

Loads on Wheels	<p>Count of loaded rail cars including all rail cars that have been released loaded at origin and have not been reported by the railway as unloaded at destination.</p> <p>Counts include all rail cars (hopper cars and boxcars) moving within a pipeline.</p>
Loads Not Moving	<p>Loaded rail cars for which the railways have not reported a movement event for 48 hours or more whether the rail car is at origin, enroute or at destination.</p>
Port Unloads	<p>Count of rail cars reported by railways as unloaded at the western port destinations of Vancouver, Prince Rupert and Thunder Bay.</p> <p>Unload counts include all rail cars (hopper cars and boxcars) unloaded by all receivers including major port terminals, transloaders and other receivers.</p>
Cars Arrived	<p>Count of rail cars reported as arrived at the destination railway terminal.</p>
Cars Received in Interchange	<p>Count of rail cars received in interchange by each railway within a destination railway terminal. Interchange activity is tracked for the Vancouver and Thunder Bay pipelines as applicable.</p>
Cars Delivered in Interchange	<p>Count of rail cars delivered in interchange by each railway within a destination railway terminal. Interchange activity is tracked for the Vancouver and Thunder Bay pipelines as applicable.</p>
Cars Placed for Unloading	<p>Count of rail cars reported by the railways as placed loaded at the receiver's facility for unloading.</p>
Loads on Wheels at Destination	<p>Count of rail cars that remain under load within the destination railway terminal including rail cars that have been reported as placed for unloading but not yet reported as unloaded.</p>
Waiting Placement for Unloading	<p>Count of rail cars that have been reported as arrived at the destination railway terminal but not reported as placed for unloading by the railway.</p> <p>For the Ports of Vancouver, Prince Rupert and Thunder Bay the count of rail cars waiting placement for unloading is categorized by age – i.e. the elapsed time from arrival at destination to the current report date.</p>