

SPEED READ

- Loads on wheels increased overnight, reflecting a rise in both CN and CP volumes. On a net basis, volumes increased due to higher volumes in the Prince Rupert and E. Canada corridors offset by lower traffic in the Thunder Bay, USA/MEX and Vancouver corridors.
- Network fluidity deteriorated overnight, led by an increase in idle car counts on both CN and CP by 175% (+189) and 49% (+219), respectively. The total count of cars for 4+ days on both railways decreased 16% (-47) overnight - now at 240 cars.
- Three days in Week 9 unloads now ahead of prior week's performance by around 150 unloads, marking improved week over week performance at Vancouver and Prince Rupert offset by lower unloads at Thunder Bay.

=====

Loads on Wheels

- Loads on wheels increased 2% (+130) overnight, due to higher volumes on both CN and CP - combined total at 8,566 and 17% above the trailing 30-day average.
- On a net basis, the rise in loads on wheels indicates higher volumes in the Prince Rupert and E. Canada corridors offset by lower traffic in the Thunder Bay, USA/MEX and Vancouver corridors.
- CN volumes increased slightly by 1% (+38) overnight, with higher volumes in the Prince Rupert corridor offset by reduced traffic in the Thunder Bay, Vancouver and E. Canada corridors. System wide CN loads on wheels currently at 4,195 and 20% above the trailing 30-day average.
- CP volumes increased 4% (+158) overnight, driven by a rise in volumes across all corridors. CP system wide loads on wheels currently at 4,268 and 16% above the trailing 30-day average.
- Vancouver now at 3,579, decreased for the fifth consecutive day, down 1% (-31) overnight, now 13% below the trailing 30-day average.
- The Prince Rupert pipeline presently at 1,765, the highest seen in the last 30 days, increased significantly by 20% (+292) overnight, and 97% above the trailing 30-day average.
- Thunder Bay volumes declined 5% (-113) overnight - presently at 2,114 and 66% above the trailing 30-day average, with 82% of traffic moving on CP.

Hopper Car Rationing

- No hopper cars were rationed by either CN or CP in week 8.

Loads Not Moving

- **The count of cars not moving for 48+ hours increased significantly by 74% (+408) overnight, marking higher counts on both CN and CP. Idle car counts presently at 961 and 34% above the trailing 30-day average.**
- CN
 - **The count of idle cars for 48+ hours increased 175% (+189) overnight - currently at 297 cars.**
 - The number of cars idle for 4+ days decreased 32% (-14) overnight - presently at 30 cars.
 - The count of cars not moving for 7+ days increased 25% (+2) overnight - currently at 10 cars.
 - Vancouver represents 12% of all idle cars.
 - In total 18% of all idle cars are dwelling at origin locations.
- CP
 - **CP idle car counts for 48+ hours increased 49% (+219) overnight - currently at 664 cars.**
 - The number of cars idle for 4+ days declined 14% (-33) overnight - now at 210 cars.

- The number of cars idle for 7+ days decreased 11% (-4) overnight - presently at 32 cars.
- Vancouver accounts for 42% of all idle cars.
- In total 35% of all idle cars are dwelling at origin locations.

Port Performance

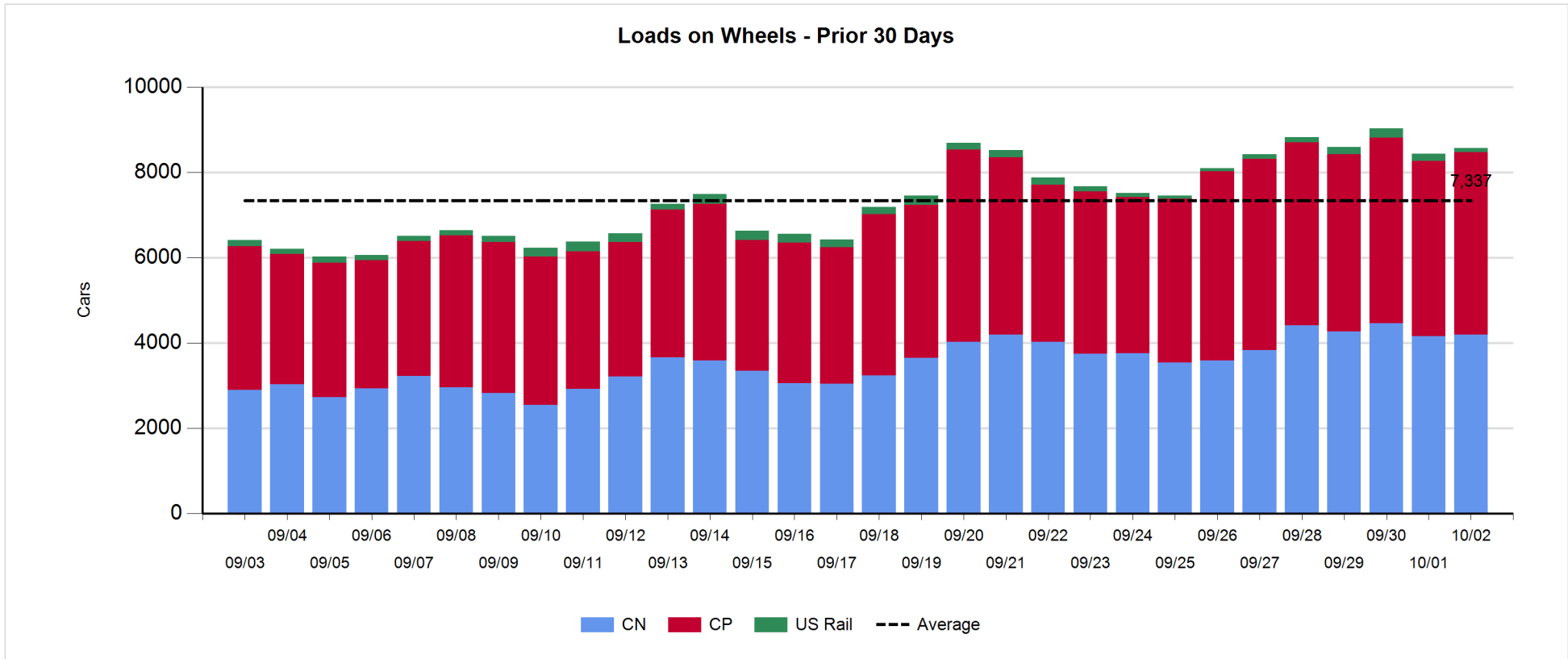
- CN and CP reported a total of 1,197 cars unloaded at the three major ports, 18% above the trailing 30-day average. Three days in Week 9 unloads now ahead of last week's pace by fewer than 150 unloads, marking higher unloads at Vancouver and Prince Rupert offset by lower unloads at Thunder Bay.
- Vancouver
 - 774 unloads reported by CN and CP at the Port of Vancouver; CN - 303 and CP - 471. Three days in Week 9 unloads are tracking ahead of last week's performance by 100 unloads.
 - There are 900 cars on site at Vancouver with 550 cars arriving at the port in the last 24 hours.
 - CN and CP have 750 cars in British Columbia en route to Vancouver, with nearly 200 cars at Kamloops and west, and 68% of traffic moving on CP.
- Prince Rupert
 - Prince Rupert reported 60 unloads, now ahead of last week's unloads after three days by fewer than 50 unloads.
 - Loads on wheels now above 1,000 cars - presently at 1,765 cars.
 - There are more than 1,050 cars west of Jasper en route to Prince Rupert.
 - There are 100 cars on site at Prince Rupert with zero cars arriving at the port in the last 24 hours.
- Thunder Bay
 - 363 unloads were reported at Thunder Bay yesterday. Three days in Week 9 unloads are tracking behind last week's pace by 10 unloads.
 - There are around 750 cars on site at Thunder Bay with 400 cars arriving at the port in the prior 24 hours.
 - There are more than 450 cars en route to Thunder Bay from Winnipeg and east.

Daily Loads on Wheels - 10/2/2019

	E Canada	Prince Rupert	Thunder Bay	USA/MEX	Vancouver	Total
CN	458	1,765	371	242	1,359	4,195
CP	66		1,743	265	2,194	4,268
Short Line	7				26	33
US Rail				70		70
	531	1,765	2,114	577	3,579	8,566

Change in Loads on Wheels - Prior 24 Hours

	E Canada	Prince Rupert	Thunder Bay	USA/MEX	Vancouver	Total
CN	-30	292	-184	0	-40	38
CP	55		71	5	27	158
Short Line	0				-18	-18
US Rail				-48		-48
	25	292	-113	-43	-31	130

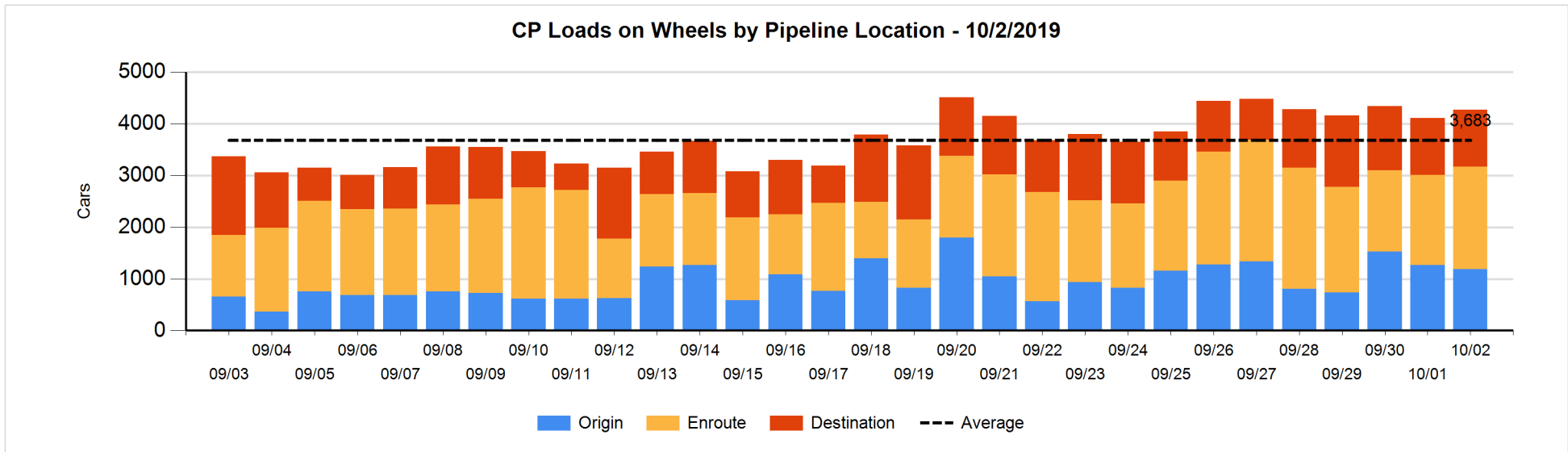
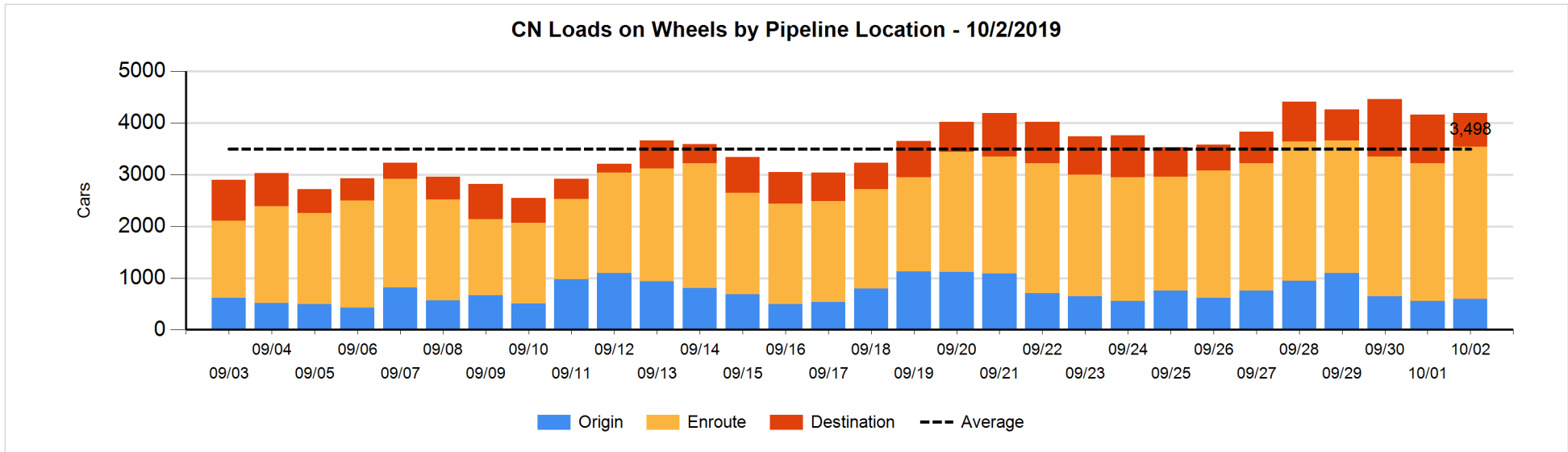


Daily Loads on Wheels By Pipeline Location - 10/2/2019

	E Canada	Prince Rupert	Thunder Bay	USA/MEX	Vancouver	Total
CN						
Origin	7	293		11	286	597
Enroute	442	1,370	244	202	685	2,943
Destination	9	102	127	29	388	655
	458	1,765	371	242	1,359	4,195
CP						
Origin	60		322		809	1,191
Enroute	6		813	265	893	1,977
Destination			608		492	1,100
	66		1,743	265	2,194	4,268
US Rail / Short Line						
Origin						
Enroute				41		41
Destination	7			29	26	62
	7			70	26	103

Change in Daily Loads on Wheels By Pipeline Location - Prior 24 Hours

	E Canada	Prince Rupert	Thunder Bay	USA/MEX	Vancouver	Total
CN						
Origin	-71	250	-201	6	56	40
Enroute	54	102	143	6	-26	279
Destination	-13	-60	-126	-12	-70	-281
	-30	292	-184	0	-40	38
CP						
Origin	57		-235	-2	101	-79
Enroute	-2		141	7	90	236
Destination			165		-164	1
	55		71	5	27	158
US Rail / Short Line						
Origin						
Enroute				-5		-5
Destination	0			-43	-18	-61
	0			-48	-18	-66

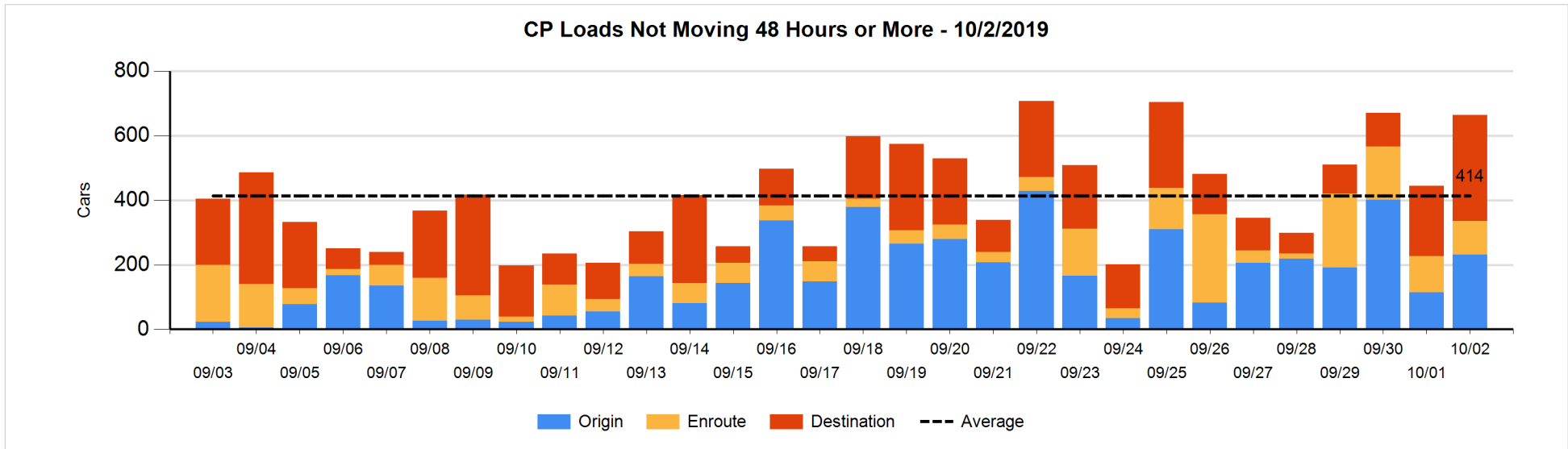
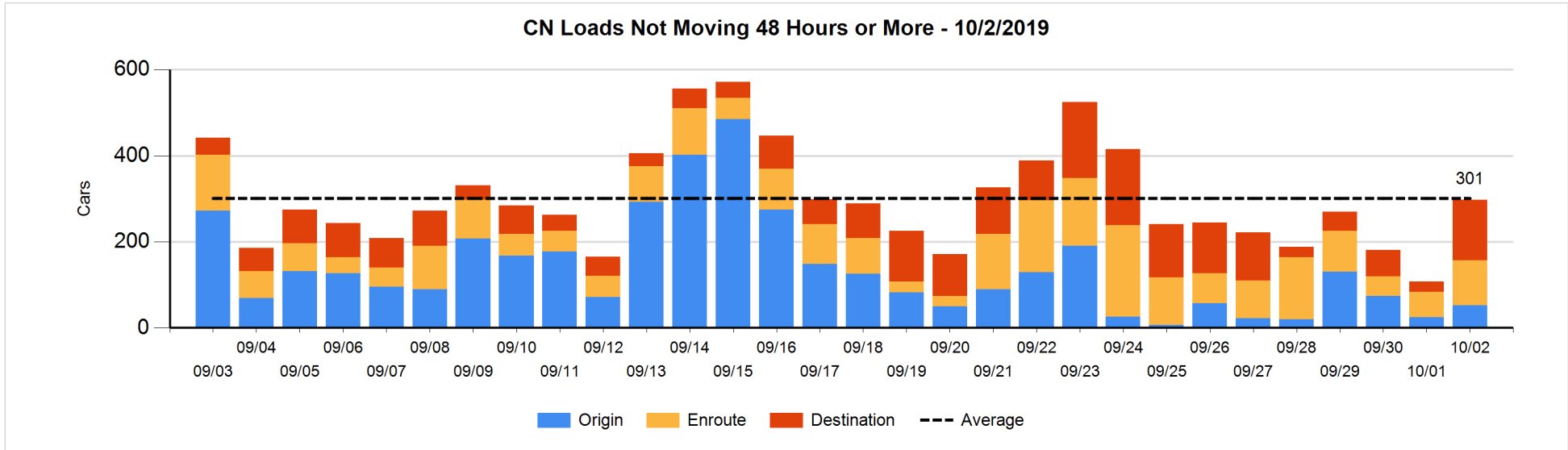


Loads Not Moving 48 Hours or More - 10/2/2019

	E Canada	Prince Rupert	Thunder Bay	USA/MEX	Vancouver	Total
CN						
Origin		40		2	10	52
Enroute	17	75	4	2	7	105
Destination	1	98	14	7	20	140
	18	213	18	11	37	297
CP						
Origin	3		111		117	231
Enroute			1	98	6	105
Destination			169		159	328
	3		281	98	282	664
US Rail / Short Line						
Origin						
Enroute				11		11
Destination	6			19	17	42
	6			30	17	53

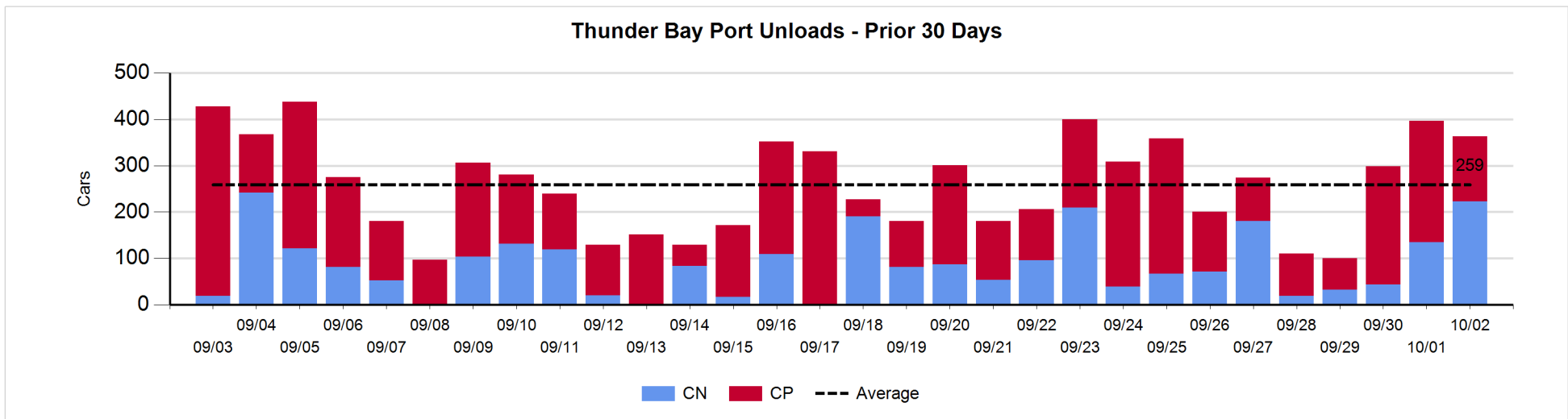
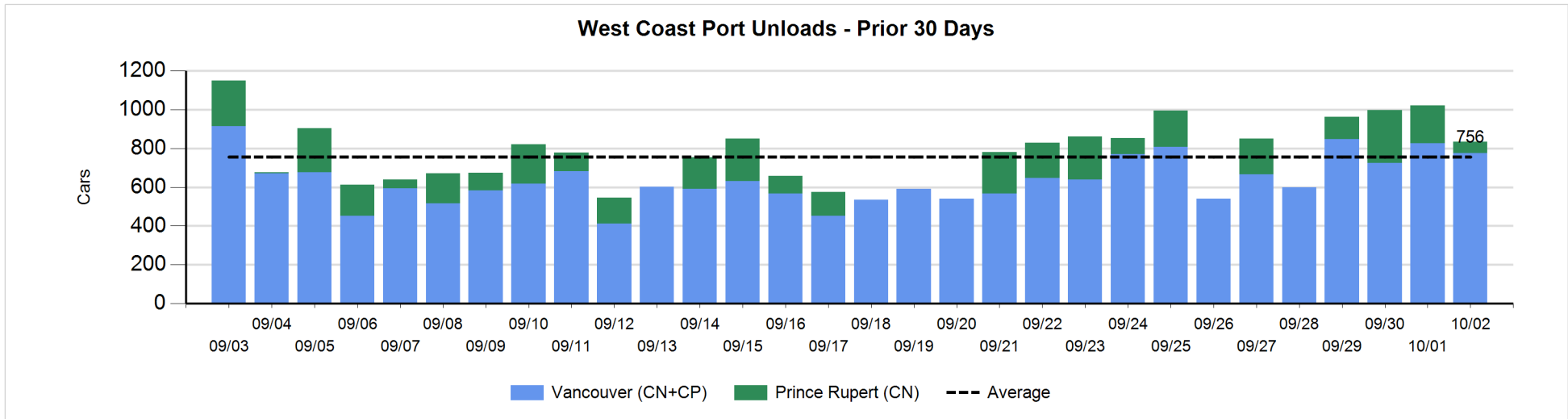
Change in Loads Not Moving 48 Hours or More - 10/2/2019

	E Canada	Prince Rupert	Thunder Bay	USA/MEX	Vancouver	Total
CN						
Origin		25		2	0	27
Enroute	-5	55	3	0	-7	46
Destination	-8	98	10	3	13	116
	-13	178	13	5	6	189
CP						
Origin	3		111		2	116
Enroute			0	1	-7	-6
Destination			91		18	109
	3		202	1	13	219
US Rail / Short Line						
Origin						
Enroute				-1		-1
Destination	5			5	12	22
	5			4	12	21



Port Unloads - 10/2/2019

	Prince Rupert	Vancouver	West Coast Total	Thunder Bay	Total
CN	60	303	363	223	586
CP		471	471	140	611
	60	774	834	363	1,197



Port Terminal Status

Vancouver

Daily Activity for 10/2/2019

	Cars Arrived	Cars Received in Interchange	Cars Delivered in Interchange	Cars Placed for Unloading	Loads on Wheels at Destination As of 10/2/2019
CN	268	121	153	240	389
CP	275	153	123	444	492
SRY	1	2		21	26

Port Unloads

	10/02	10/01	Week To Date	Last Week
CN	303	373	935	1,871
CP	471	452	1,388	2,994
SRY	21	8	32	38

Age Profile of Loaded Cars Waiting Placement for Unloading

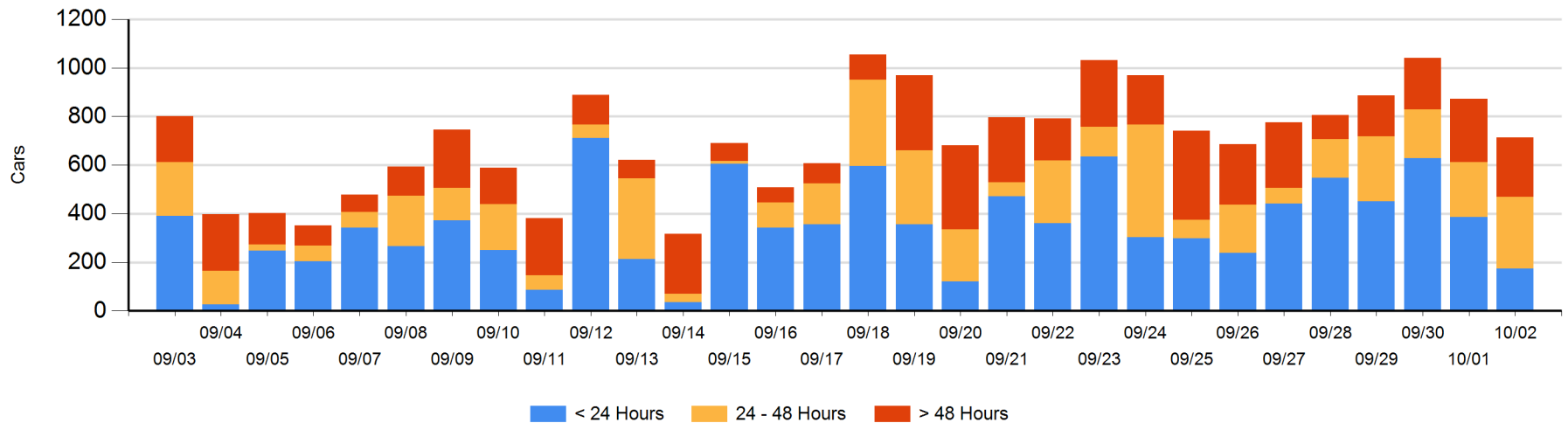
Today

	< 24 Hrs	24 - 48 Hrs	> 48-72 Hrs	> 72 Hrs	Total On Hand
CN	11	258	40	51	360
CP	164	37	27	125	353
SRY					0

Change in Last 24 Hours

	< 24 Hrs	24-48 Hrs	48 - 72 Hrs	> 72 Hrs
CN	-136	170	-5	6
CP	-75	-102	-94	76
SRY				

Loaded Cars on Hand Vancouver Waiting for Placement - Last 30 Days All Railways



Port Terminal Status

Prince Rupert

Daily Activity for 10/2/2019

	Cars Arrived	Cars Received in Interchange	Cars Delivered in Interchange	Cars Placed for Unloading	Loads on Wheels at Destination As of 10/2/2019
CN					102

Port Unloads

	10/02	10/01	Week To Date	Last Week
CN	60	197	531	793

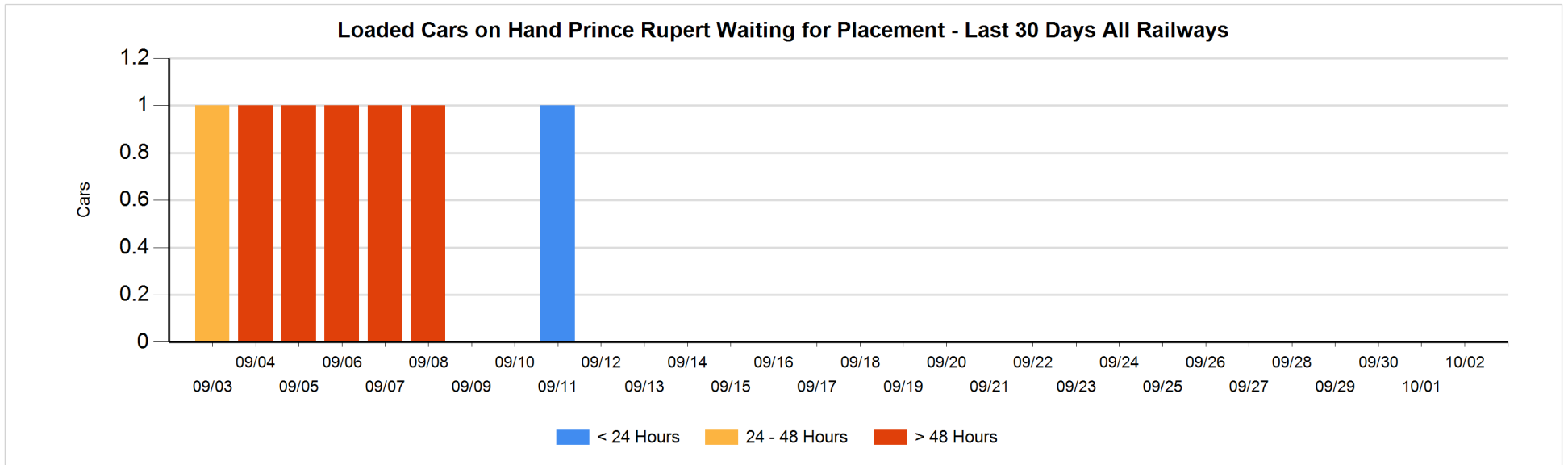
Age Profile of Loaded Cars Waiting Placement for Unloading

Today

	< 24 Hrs	24 - 48 Hrs	> 48-72 Hrs	> 72 Hrs	Total On Hand
CN					0

Change in Last 24 Hours

	< 24 Hrs	24-48 Hrs	48 - 72 Hrs	> 72 Hrs
CN				



Port Terminal Status

Thunder Bay

Daily Activity for 10/2/2019

	Cars Arrived	Cars Received in Interchange	Cars Delivered in Interchange	Cars Placed for Unloading	Loads on Wheels at Destination As of 10/2/2019
CN	97			226	127
CP	306			136	608

Port Unloads

	10/02	10/01	Week To Date	Last Week
CN	223	135	402	617
CP	140	261	656	1,135

Age Profile of Loaded Cars Waiting Placement for Unloading

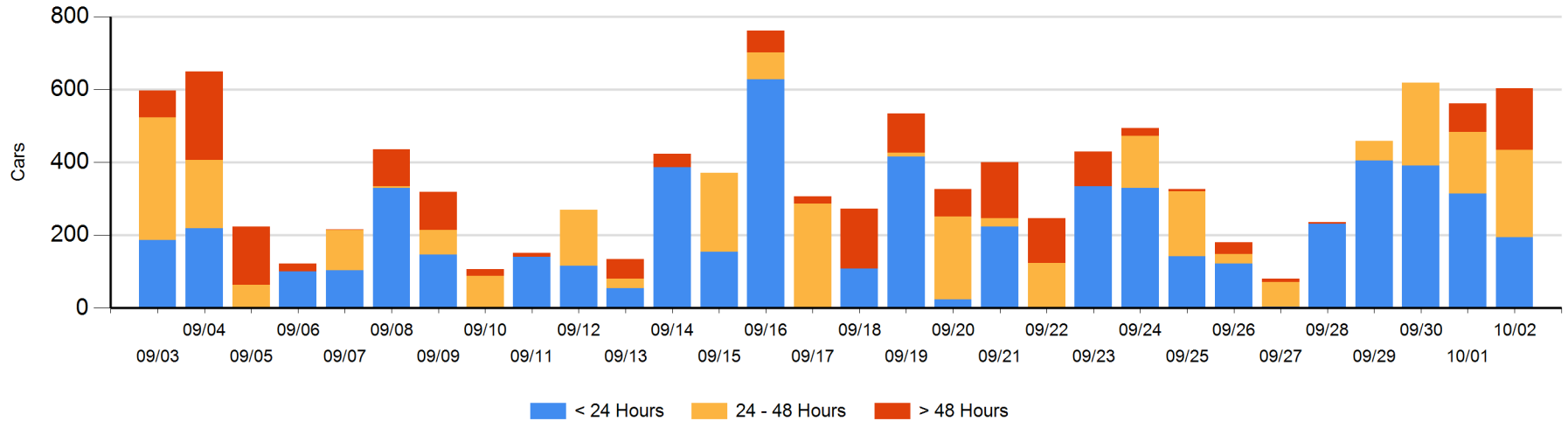
Today

	< 24 Hrs	24 - 48 Hrs	> 48-72 Hrs	> 72 Hrs	Total On Hand
CN		2			2
CP	195	237	121	48	601

Change in Last 24 Hours

	< 24 Hrs	24-48 Hrs	48 - 72 Hrs	> 72 Hrs
CN	-89	-40		
CP	-31	110	43	48

Loaded Cars on Hand Thunder Bay Waiting for Placement - Last 30 Days All Railways



Measurement Definitions

Loads on Wheels	<p>Count of loaded rail cars including all rail cars that have been released loaded at origin and have not been reported by the railway as unloaded at destination.</p> <p>Counts include all rail cars (hopper cars and boxcars) moving within a pipeline.</p>
Loads Not Moving	<p>Loaded rail cars for which the railways have not reported a movement event for 48 hours or more whether the rail car is at origin, enroute or at destination.</p>
Port Unloads	<p>Count of rail cars reported by railways as unloaded at the western port destinations of Vancouver, Prince Rupert and Thunder Bay.</p> <p>Unload counts include all rail cars (hopper cars and boxcars) unloaded by all receivers including major port terminals, transloaders and other receivers.</p>
Cars Arrived	<p>Count of rail cars reported as arrived at the destination railway terminal.</p>
Cars Received in Interchange	<p>Count of rail cars received in interchange by each railway within a destination railway terminal. Interchange activity is tracked for the Vancouver and Thunder Bay pipelines as applicable.</p>
Cars Delivered in Interchange	<p>Count of rail cars delivered in interchange by each railway within a destination railway terminal. Interchange activity is tracked for the Vancouver and Thunder Bay pipelines as applicable.</p>
Cars Placed for Unloading	<p>Count of rail cars reported by the railways as placed loaded at the receiver's facility for unloading.</p>
Loads on Wheels at Destination	<p>Count of rail cars that remain under load within the destination railway terminal including rail cars that have been reported as placed for unloading but not yet reported as unloaded.</p>
Waiting Placement for Unloading	<p>Count of rail cars that have been reported as arrived at the destination railway terminal but not reported as placed for unloading by the railway.</p> <p>For the Ports of Vancouver, Prince Rupert and Thunder Bay the count of rail cars waiting placement for unloading is categorized by age – i.e. the elapsed time from arrival at destination to the current report date.</p>