

SPEED READ

- Loads on wheels decreased slightly overnight, reflecting a decline in CN traffic offset by higher CP volumes. On a net basis, volumes decreased due to reduced volumes in the Prince Rupert, Thunder Bay and E. Canada corridors offset by higher traffic in the Vancouver and USA/MEX corridors.
- Network fluidity improved overnight, led by a decline in idle car counts on both CN and CP by 49% (-146) and 33% (-220), respectively. The total count of cars for 4+ days on both railways decreased 11% (-26) overnight - currently at 215 cars.
- Four days in Week 9 unloads now ahead of prior week's performance by 700 unloads, marking improved week over week performance across all three major ports - Vancouver, Thunder Bay and Prince Rupert.

=====

Loads on Wheels

- Loads on wheels decreased slightly by 1% (-98) overnight, due to lower traffic on CN offset by higher traffic on CP - combined total at 8,473 and 14% above the trailing 30-day average.
- On a net basis, the decline in loads on wheels indicates reduced volumes in the Prince Rupert, Thunder Bay and E. Canada corridors offset by higher traffic in the Vancouver and USA/MEX corridors.
- CN volumes decreased 4% (-166) overnight, with reduced traffic across all corridors other than Thunder Bay. System wide CN loads on wheels currently at 4,033 and 14% above the trailing 30-day average.
- CP volumes increased slightly by 1% (+51) overnight, driven by an increase in traffic in the Vancouver and E. Canada corridors offset by a decline in traffic in the Thunder Bay corridor. CP system wide loads on wheels currently at 4,321 and 16% above the trailing 30-day average.
- Vancouver currently at 3,809, increased 6% (+225) overnight, now 7% below the trailing 30-day average.
- The Prince Rupert pipeline currently at 1,638, decreased 7% (-127) overnight, and 76% above the trailing 30-day average.
- Thunder Bay volumes fell 5% (-106) overnight - currently at 2,009 and 55% above the trailing 30-day average, with 75% of traffic moving on CP.

Hopper Car Rationing

- No hopper cars were rationed by either CN or CP in week 8.

Loads Not Moving

- **The count of cars not moving for 48+ hours decreased 38% (-366) overnight, marking reduced counts on both CN and CP. Idle car counts currently at 596 and 16% below the trailing 30-day average.**
- CN
 - **The count of idle cars for 48+ hours decreased 49% (-146) overnight - currently at 151 cars.**
 - The number of cars idle for 4+ days fell 10% (-3) overnight - currently at 27 cars.
 - The count of cars not moving for 7+ days increased 20% (+2) overnight - currently at 12 cars.
 - Vancouver represents 15% of all idle cars.
 - In total 7% of all idle cars are dwelling at origin locations.
- CP
 - **CP idle car counts for 48+ hours decreased 33% (-220) overnight - currently at 445 cars.**
 - The number of cars idle for 4+ days decreased 11% (-23) overnight - currently at 188 cars.
 - The number of cars idle for 7+ days rose 33% (+11) overnight - currently at 44 cars.

- Vancouver accounts for 56% of all idle cars.
- In total 36% of all idle cars are dwelling at origin locations.

Port Performance

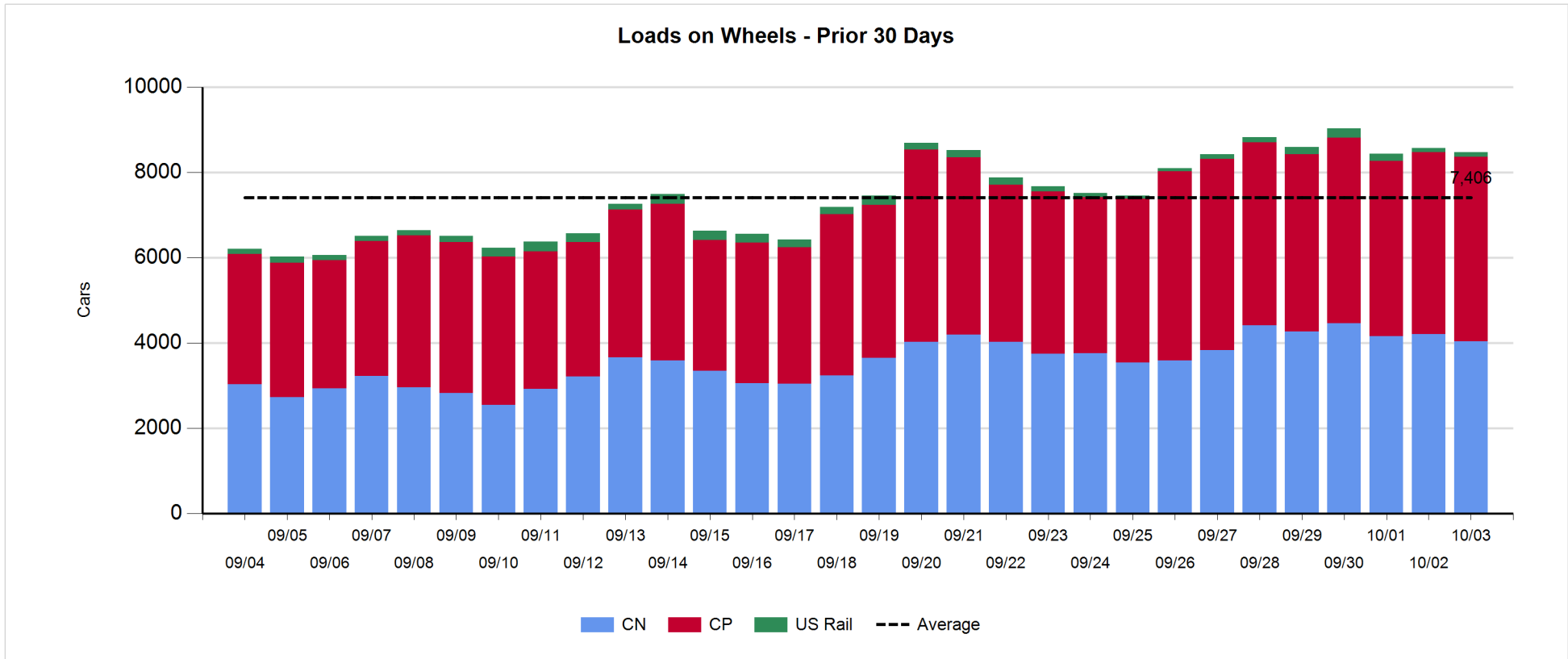
- CN and CP reported a total of 1,304 cars unloaded at the three major ports, 30% above the trailing 30-day average. Four days in Week 9 unloads now ahead of last week's pace by 700 unloads, marking higher unloads across all three major ports - Vancouver, Thunder Bay and Prince Rupert.
- Vancouver
 - 669 unloads reported by CN and CP at the Port of Vancouver; CN - 270 and CP - 399. Four days in Week 9 unloads are tracking ahead of last week's performance by 250 unloads.
 - There are more than 550 cars on site at Vancouver with fewer than 350 cars arriving at the port in the last 24 hours.
 - CN and CP have 850 cars in British Columbia en route to Vancouver, with more than 500 cars at Kamloops and west, and 77% of traffic moving on CP.
- Prince Rupert
 - Prince Rupert reported 229 unloads, now ahead of last week's unloads after four days by more than 250 unloads.
 - Loads on wheels remain above 1,000 cars - currently at 1,638 cars.
 - There are more than 750 cars west of Jasper en route to Prince Rupert.
 - There are more than 250 cars on site at Prince Rupert with 400 cars arriving at the port in the last 24 hours.
- Thunder Bay
 - 406 unloads were reported at Thunder Bay yesterday. Four days in Week 9 unloads are tracking ahead of last week's pace by 200 unloads.
 - There are nearly 700 cars on site at Thunder Bay with 350 cars arriving at the port in the prior 24 hours.
 - There are 750 cars en route to Thunder Bay from Winnipeg and east.

Daily Loads on Wheels - 10/3/2019

	E Canada	Prince Rupert	Thunder Bay	USA/MEX	Vancouver	Total
CN	336	1,638	499	224	1,336	4,033
CP	94		1,510	265	2,452	4,321
Short Line	7				21	28
US Rail				91		91
	437	1,638	2,009	580	3,809	8,473

Change in Loads on Wheels - Prior 24 Hours

	E Canada	Prince Rupert	Thunder Bay	USA/MEX	Vancouver	Total
CN	-122	-127	128	-18	-27	-166
CP	28		-234	0	257	51
Short Line	0				-5	-5
US Rail				22		22
	-94	-127	-106	4	225	-98

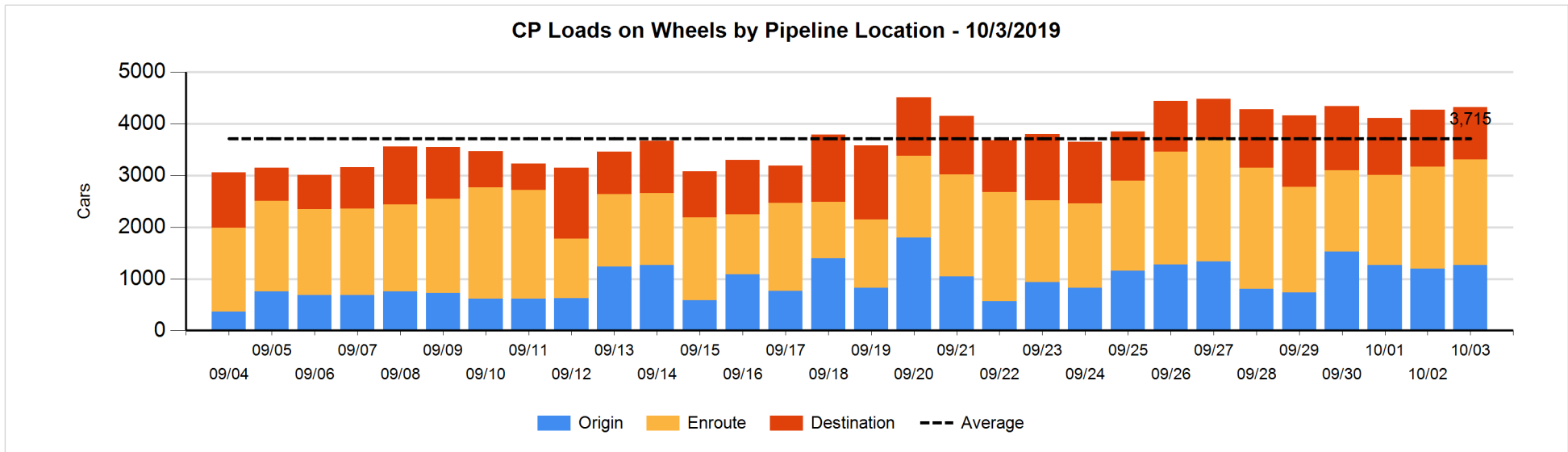
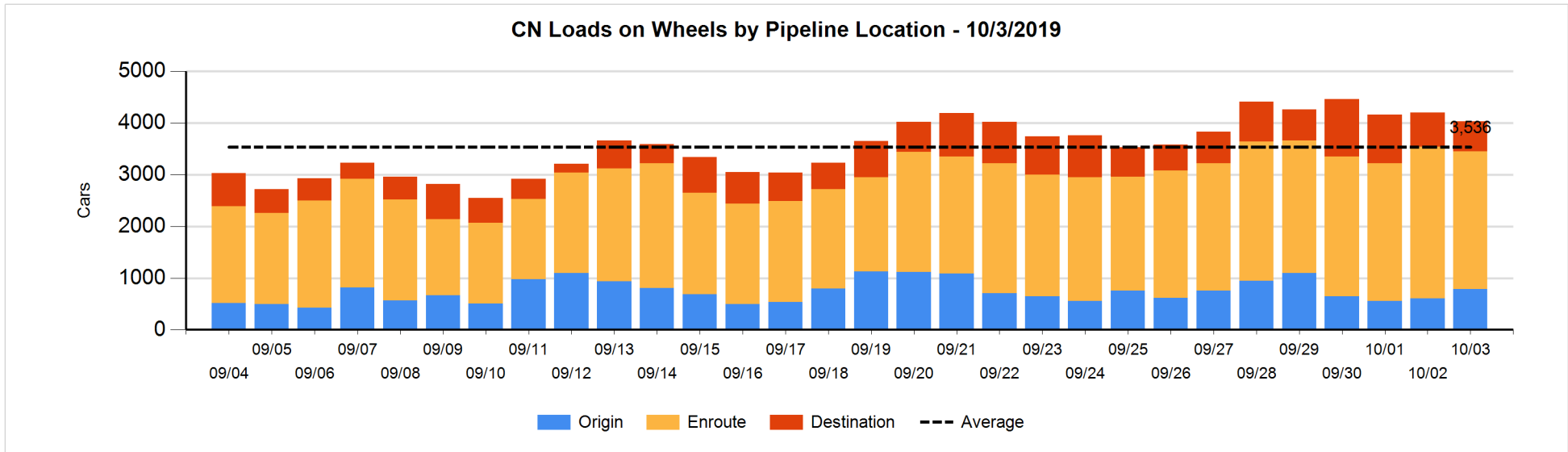


Daily Loads on Wheels By Pipeline Location - 10/3/2019

	E Canada	Prince Rupert	Thunder Bay	USA/MEX	Vancouver	Total
CN						
Origin	4	205	153	31	392	785
Enroute	293	1,158	244	158	817	2,670
Destination	39	275	102	35	127	578
	336	1,638	499	224	1,336	4,033
CP						
Origin	87		247	1	930	1,265
Enroute	7		679	248	1,108	2,042
Destination			584	16	414	1,014
	94		1,510	265	2,452	4,321
US Rail / Short Line						
Origin						
Enroute				64		64
Destination	7			27	21	55
	7			91	21	119

Change in Daily Loads on Wheels By Pipeline Location - Prior 24 Hours

	E Canada	Prince Rupert	Thunder Bay	USA/MEX	Vancouver	Total
CN						
Origin	-3	-88	153	20	102	184
Enroute	-149	-212	0	-44	132	-273
Destination	30	173	-25	6	-261	-77
	-122	-127	128	-18	-27	-166
CP						
Origin	27		-75	1	120	73
Enroute	1		-134	-17	215	65
Destination			-25	16	-78	-87
	28		-234	0	257	51
US Rail / Short Line						
Origin						
Enroute				23		23
Destination	0			-1	-5	-6
	0			22	-5	17

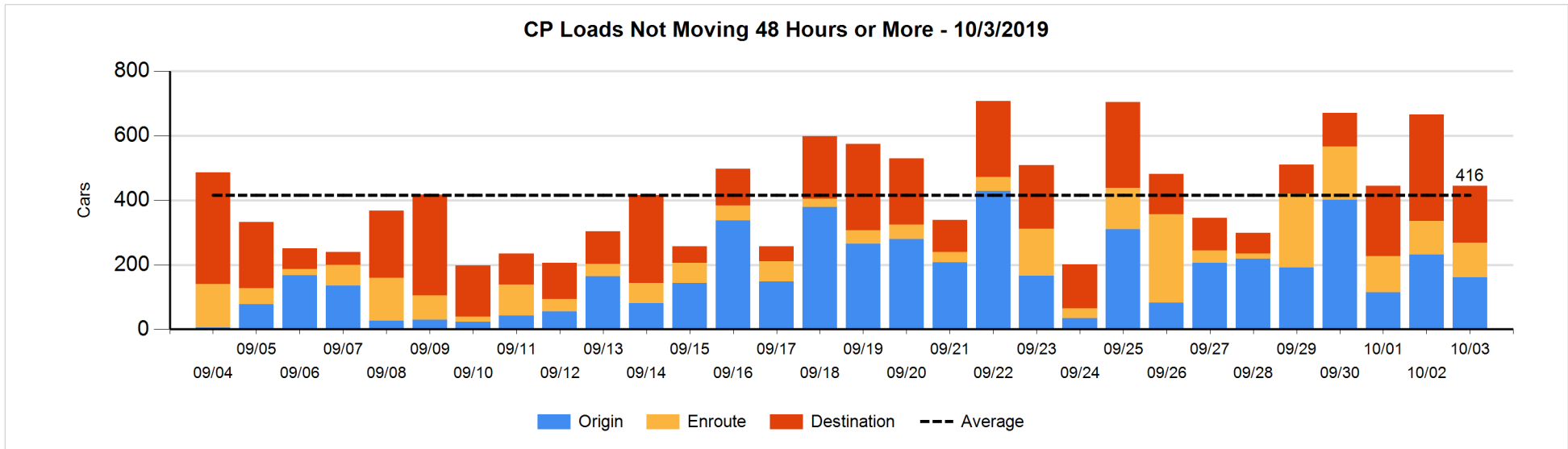
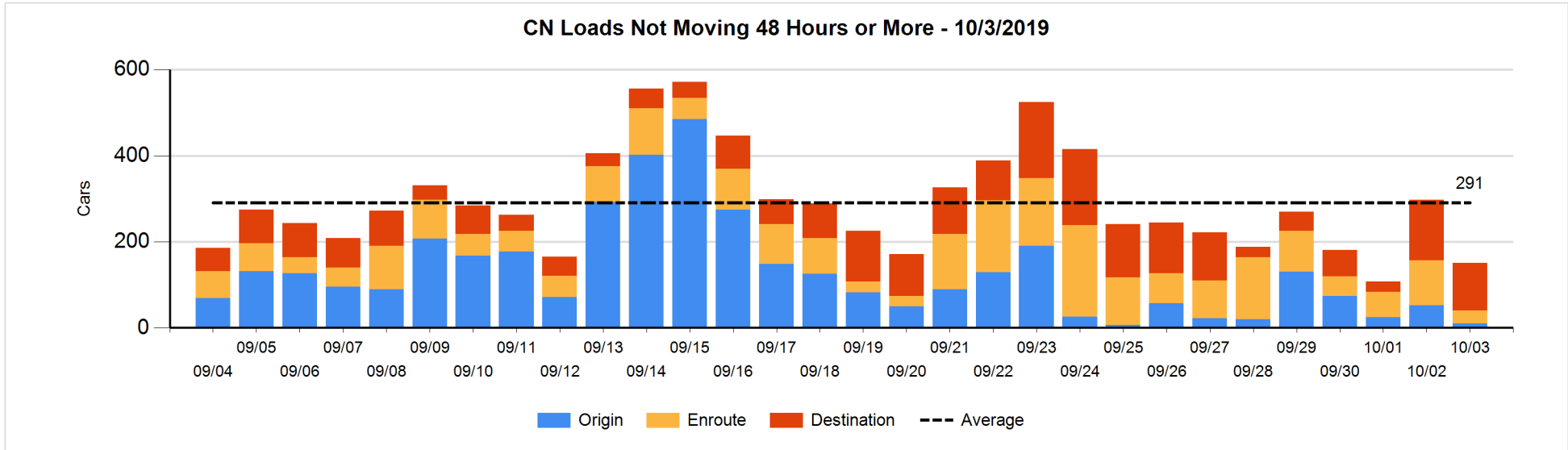


Loads Not Moving 48 Hours or More - 10/3/2019

	E Canada	Prince Rupert	Thunder Bay	USA/MEX	Vancouver	Total
CN						
Origin					10	10
Enroute	6	8	4	2	10	30
Destination	2	97	7	3	2	111
	8	105	11	5	22	151
CP						
Origin	2				159	161
Enroute			1	99	7	107
Destination			94		83	177
	2		95	99	249	445
US Rail / Short Line						
Origin						
Enroute				7		7
Destination	6			21	18	45
	6			28	18	52

Change in Loads Not Moving 48 Hours or More - 10/3/2019

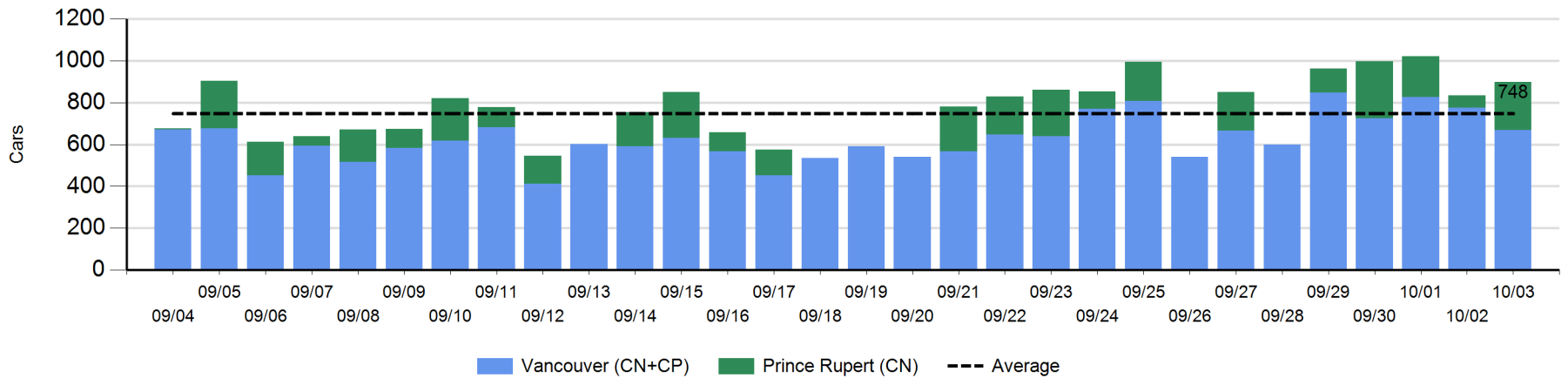
	E Canada	Prince Rupert	Thunder Bay	USA/MEX	Vancouver	Total
CN						
Origin		-40		-2	0	-42
Enroute	-11	-67	0	0	3	-75
Destination	1	-1	-7	-4	-18	-29
	-10	-108	-7	-6	-15	-146
CP						
Origin	-1		-111		42	-70
Enroute			0	1	1	2
Destination			-76		-76	-152
	-1		-187	1	-33	-220
US Rail / Short Line						
Origin						
Enroute				-4		-4
Destination	0			2	1	3
	0			-2	1	-1



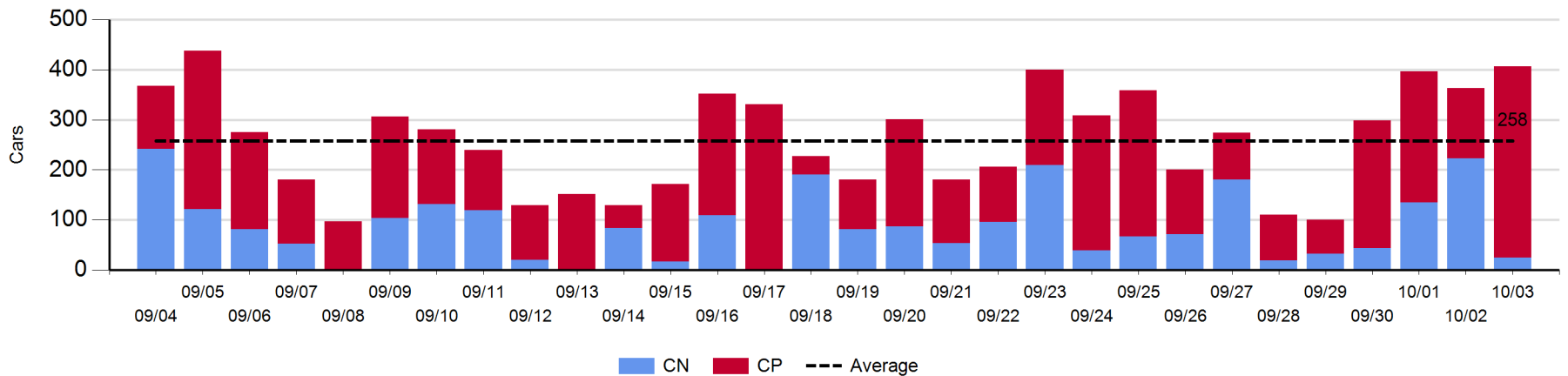
Port Unloads - 10/3/2019

	Prince Rupert	Vancouver	West Coast Total	Thunder Bay	Total
CN	229	270	499	25	524
CP		399	399	381	780
	229	669	898	406	1,304

West Coast Port Unloads - Prior 30 Days



Thunder Bay Port Unloads - Prior 30 Days



Port Terminal Status

Vancouver

Daily Activity for 10/3/2019

	Cars Arrived	Cars Received in Interchange	Cars Delivered in Interchange	Cars Placed for Unloading	Loads on Wheels at Destination As of 10/3/2019
CN	150	8	143	201	128
CP	183	141	8	405	414
SRY		2		7	21

Port Unloads

	10/03	10/02	Week To Date	Last Week
CN	270	303	1,205	1,871
CP	399	471	1,787	2,994
SRY	7	21	39	38

Age Profile of Loaded Cars Waiting Placement for Unloading

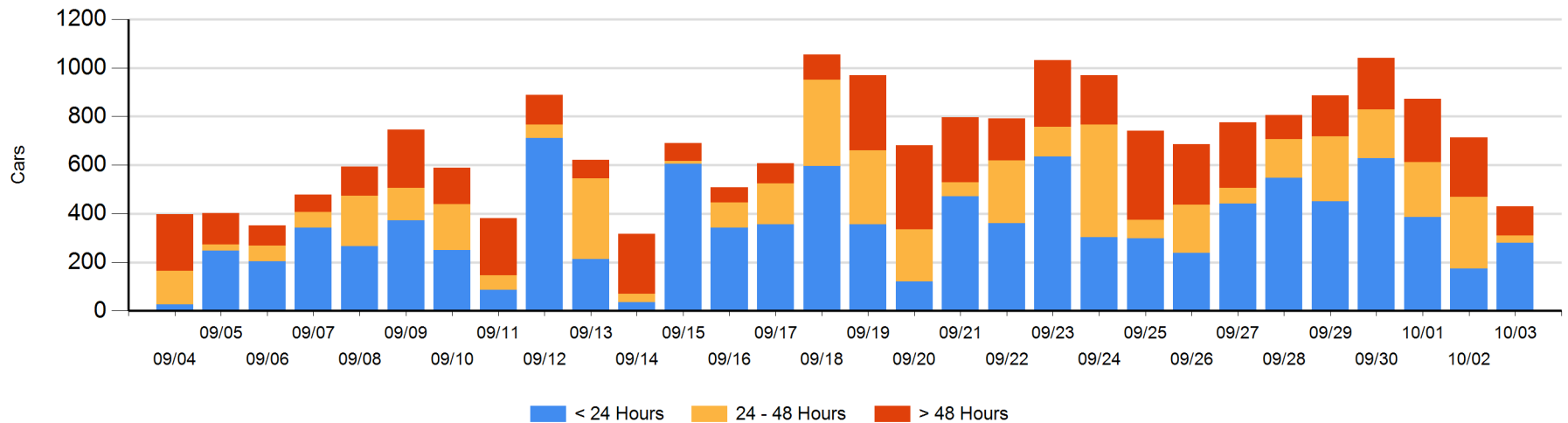
Today

	< 24 Hrs	24 - 48 Hrs	> 48-72 Hrs	> 72 Hrs	Total On Hand
CN	98		6	33	137
CP	183	28	25	58	294
SRY					0

Change in Last 24 Hours

	< 24 Hrs	24-48 Hrs	48 - 72 Hrs	> 72 Hrs
CN	87	-258	-34	-18
CP	19	-9	-2	-67
SRY				

Loaded Cars on Hand Vancouver Waiting for Placement - Last 30 Days All Railways



Port Terminal Status

Prince Rupert

Daily Activity for 10/3/2019

	Cars Arrived	Cars Received in Interchange	Cars Delivered in Interchange	Cars Placed for Unloading	Loads on Wheels at Destination As of 10/3/2019
CN	402			402	275

Port Unloads

	10/03	10/02	Week To Date	Last Week
CN	229	60	760	793

Age Profile of Loaded Cars Waiting Placement for Unloading

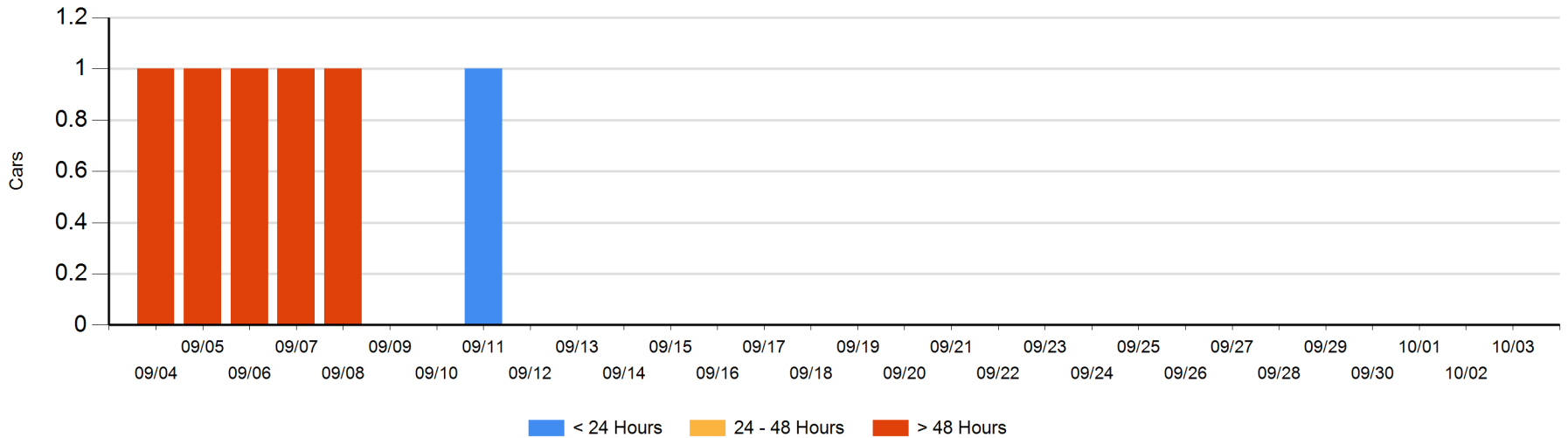
Today

	< 24 Hrs	24 - 48 Hrs	> 48-72 Hrs	> 72 Hrs	Total On Hand
CN					0

Change in Last 24 Hours

	< 24 Hrs	24-48 Hrs	48 - 72 Hrs	> 72 Hrs
CN				

Loaded Cars on Hand Prince Rupert Waiting for Placement - Last 30 Days All Railways



Port Terminal Status

Thunder Bay

Daily Activity for 10/3/2019

	Cars Arrived	Cars Received in Interchange	Cars Delivered in Interchange	Cars Placed for Unloading	Loads on Wheels at Destination As of 10/3/2019
CN				1	102
CP	356			399	584

Port Unloads

	10/03	10/02	Week To Date	Last Week
CN	25	223	427	617
CP	381	140	1,037	1,135

Age Profile of Loaded Cars Waiting Placement for Unloading

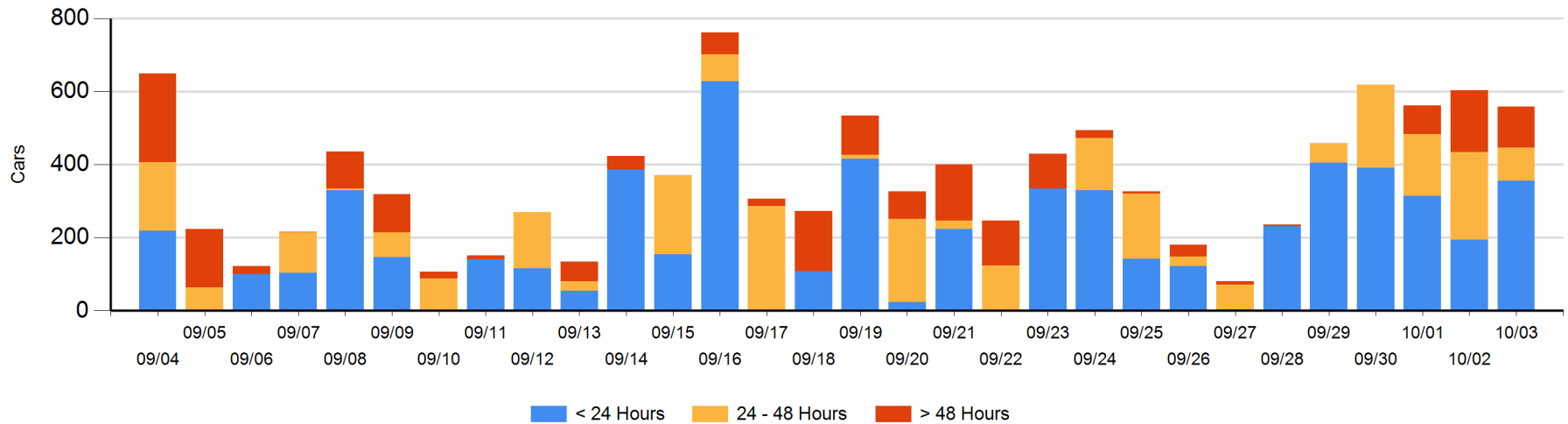
Today

	< 24 Hrs	24 - 48 Hrs	> 48-72 Hrs	> 72 Hrs	Total On Hand
CN			1		1
CP	356	91	65	46	558

Change in Last 24 Hours

	< 24 Hrs	24-48 Hrs	48 - 72 Hrs	> 72 Hrs
CN		-2	1	
CP	161	-146	-56	-2

Loaded Cars on Hand Thunder Bay Waiting for Placement - Last 30 Days All Railways



Measurement Definitions

Loads on Wheels	<p>Count of loaded rail cars including all rail cars that have been released loaded at origin and have not been reported by the railway as unloaded at destination.</p> <p>Counts include all rail cars (hopper cars and boxcars) moving within a pipeline.</p>
Loads Not Moving	<p>Loaded rail cars for which the railways have not reported a movement event for 48 hours or more whether the rail car is at origin, enroute or at destination.</p>
Port Unloads	<p>Count of rail cars reported by railways as unloaded at the western port destinations of Vancouver, Prince Rupert and Thunder Bay.</p> <p>Unload counts include all rail cars (hopper cars and boxcars) unloaded by all receivers including major port terminals, transloaders and other receivers.</p>
Cars Arrived	<p>Count of rail cars reported as arrived at the destination railway terminal.</p>
Cars Received in Interchange	<p>Count of rail cars received in interchange by each railway within a destination railway terminal. Interchange activity is tracked for the Vancouver and Thunder Bay pipelines as applicable.</p>
Cars Delivered in Interchange	<p>Count of rail cars delivered in interchange by each railway within a destination railway terminal. Interchange activity is tracked for the Vancouver and Thunder Bay pipelines as applicable.</p>
Cars Placed for Unloading	<p>Count of rail cars reported by the railways as placed loaded at the receiver's facility for unloading.</p>
Loads on Wheels at Destination	<p>Count of rail cars that remain under load within the destination railway terminal including rail cars that have been reported as placed for unloading but not yet reported as unloaded.</p>
Waiting Placement for Unloading	<p>Count of rail cars that have been reported as arrived at the destination railway terminal but not reported as placed for unloading by the railway.</p> <p>For the Ports of Vancouver, Prince Rupert and Thunder Bay the count of rail cars waiting placement for unloading is categorized by age – i.e. the elapsed time from arrival at destination to the current report date.</p>