

SPEED READ

- Loads on wheels rose marginally overnight, reflecting higher CP volumes offset by a decline in CN volumes. On a net basis, volumes increased due to higher volumes in the Vancouver, Thunder Bay and E. Canada corridors offset by lower volumes in the Prince Rupert corridor.
- Network fluidity improved overnight, led by a decline in idle car counts on both CN and CP by 18% (-69) and 4% (-19), respectively. The total count of cars for 4+ days on both railways fell 56% (-185) overnight - presently at 145 cars.
- Week 9 unloads ended ahead of prior week's performance by more than 1,200 unloads, reflecting improved week over week performance at Thunder Bay and Prince Rupert offset by lower unloads at Vancouver.

=====

Loads on Wheels

- Loads on wheels rose marginally by 1% (+67) overnight, due to higher volumes on CP offset by lower volumes on CN - combined total at 9,167 and 19% above the trailing 30-day average.
- On a net basis, the increase in loads on wheels indicates higher volumes in the Vancouver, Thunder Bay and E. Canada corridors offset by lower volumes in the Prince Rupert corridor.
- CN volumes decreased 4% (-238) overnight, with lower volumes across all corridors. System wide CN loads on wheels currently at 5,252 and 39% above the trailing 30-day average.
- CP volumes increased 7% (+232) overnight, driven by an increase in volumes across all corridors other than USA/MEX. CP system wide loads on wheels currently at 3,618 and 4% below the trailing 30-day average.
- Vancouver currently at 4,422, increased 2% (+94) overnight, now 5% above the trailing 30-day average.
- The Prince Rupert pipeline presently at 1,806, decreased 2% (-45) overnight, and 76% above the trailing 30-day average.
- Thunder Bay volumes increased slightly by 1% (+14) overnight - presently at 1,928 and 38% above the trailing 30-day average, with 62% of traffic moving on CP.

Hopper Car Rationing

- No hopper cars were rationed by either CN or CP in week 8.

Loads Not Moving

- **The count of cars not moving for 48+ hours decreased 10% (-88) overnight, reflecting reduced counts on both CN and CP. Idle car counts now at 812 and 10% above the trailing 30-day average.**
- CN
 - **The count of idle cars for 48+ hours decreased 18% (-69) overnight - presently at 313 cars.**
 - The number of cars idle for 4+ days decreased 62% (-74) overnight - now at 45 cars.
 - The count of cars not moving for 7+ days fell 17% (-2) overnight - presently at 10 cars.
 - Vancouver represents 63% of all idle cars.
 - In total 37% of all idle cars are dwelling at origin locations.
- CP
 - **CP idle car counts for 48+ hours fell 4% (-19) overnight - currently at 499 cars.**
 - The number of cars idle for 4+ days fell 53% (-111) overnight - presently at 100 cars.

- The number of cars idle for 7+ days declined 19% (-7) overnight and have now decreased for the third consecutive day - currently at 29 cars.
- Vancouver accounts for 50% of all idle cars.
- In total 36% of all idle cars are dwelling at origin locations.

Port Performance

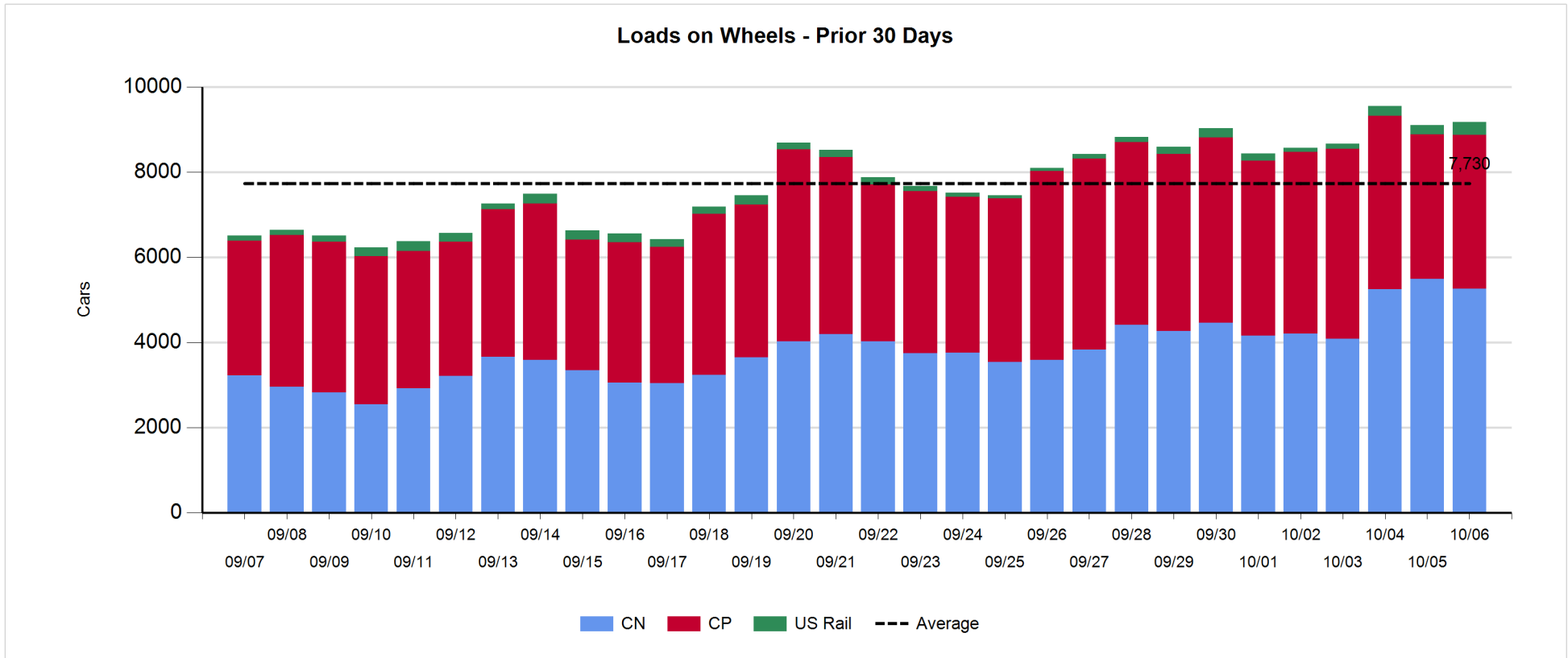
- CN and CP reported a total of 1,049 cars unloaded at the three major ports, 4% above the trailing 30-day average. Week 9 unloads ended ahead of last week's pace by more than 1,200 unloads, reflecting higher unloads at Thunder Bay and Prince Rupert offset by lower unloads at Vancouver.
- Vancouver
 - 487 unloads reported by CN and CP at the Port of Vancouver; CN - 137 and CP - 350. Week 9 unloads ended behind last week's performance by 250 unloads.
 - There are 650 cars on site at Vancouver with more than 650 cars arriving at the port in the last 24 hours.
 - CN and CP have 950 cars in British Columbia en route to Vancouver, with 400 cars at Kamloops and west, and 60% of traffic moving on CP.
- Prince Rupert
 - Prince Rupert reported 297 unloads, the highest seen in the last 30 days, ended ahead of last week's unloads by 650 unloads.
 - Loads on wheels now above 1,000 cars - currently at 1,806 cars.
 - There are 700 cars west of Jasper en route to Prince Rupert.
 - There are fewer than 250 cars on site at Prince Rupert with 200 cars arriving at the port in the last 24 hours.
- Thunder Bay
 - 265 unloads were reported at Thunder Bay yesterday. Week 9 unloads finished ahead of last week's pace by 800 unloads.
 - There are more than 1,050 cars on site at Thunder Bay with less than 450 cars arriving at the port in the prior 24 hours.
 - There are 350 cars en route to Thunder Bay from Winnipeg and east.

Daily Loads on Wheels - 10/6/2019

	E Canada	Prince Rupert	Thunder Bay	USA/MEX	Vancouver	Total
CN	382	1,806	740	211	2,113	5,252
CP	143		1,188	15	2,272	3,618
Short Line	11				37	48
US Rail				249		249
	536	1,806	1,928	475	4,422	9,167

Change in Loads on Wheels - Prior 24 Hours

	E Canada	Prince Rupert	Thunder Bay	USA/MEX	Vancouver	Total
CN	-48	-45	-113	-1	-31	-238
CP	52		127	-53	106	232
Short Line	0				20	20
US Rail				54	-1	53
	4	-45	14	0	94	67

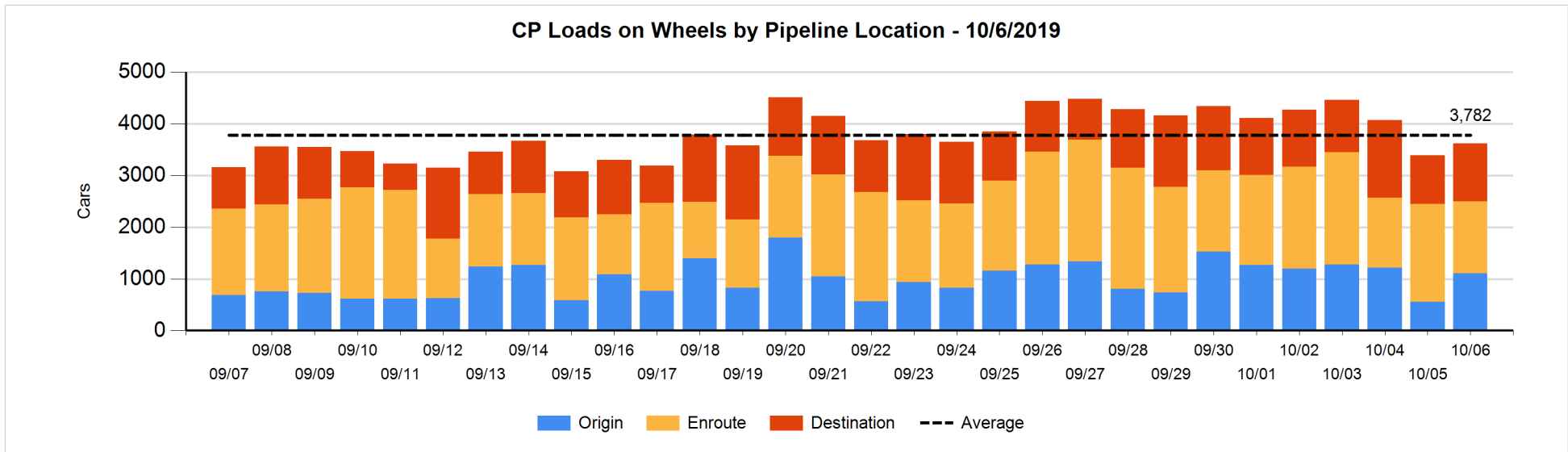
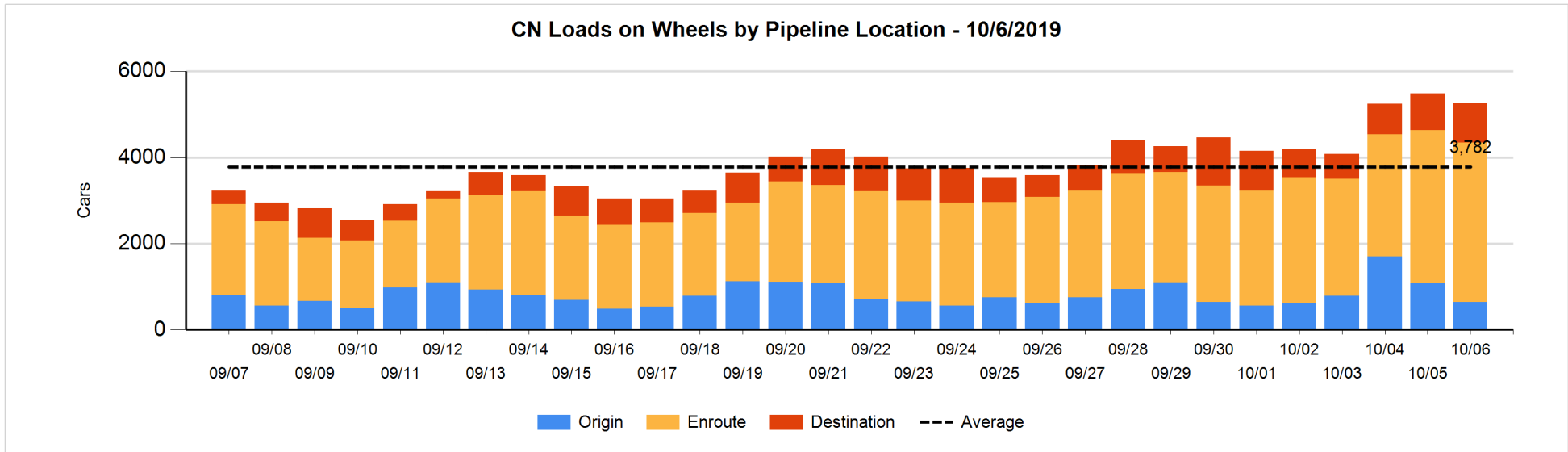


Daily Loads on Wheels By Pipeline Location - 10/6/2019

	E Canada	Prince Rupert	Thunder Bay	USA/MEX	Vancouver	Total
CN						
Origin	1	459	1		177	638
Enroute	350	1,115	356	142	1,744	3,707
Destination	31	232	383	69	192	907
	382	1,806	740	211	2,113	5,252
CP						
Origin	54		306	9	735	1,104
Enroute	89		188	6	1,107	1,390
Destination			694		430	1,124
	143		1,188	15	2,272	3,618
US Rail / Short Line						
Origin						
Enroute	4			182		186
Destination	7			67	37	111
	11			249	37	297

Change in Daily Loads on Wheels By Pipeline Location - Prior 24 Hours

	E Canada	Prince Rupert	Thunder Bay	USA/MEX	Vancouver	Total
CN						
Origin	-3	-46	0	-28	-370	-447
Enroute	-6	103	-125	-22	207	157
Destination	-39	-102	12	49	132	52
	-48	-45	-113	-1	-31	-238
CP						
Origin	52		255	0	241	548
Enroute	0		-284	-53	-165	-502
Destination			156		30	186
	52		127	-53	106	232
US Rail / Short Line						
Origin						
Enroute	0			52		52
Destination	0			2	19	21
	0			54	19	73

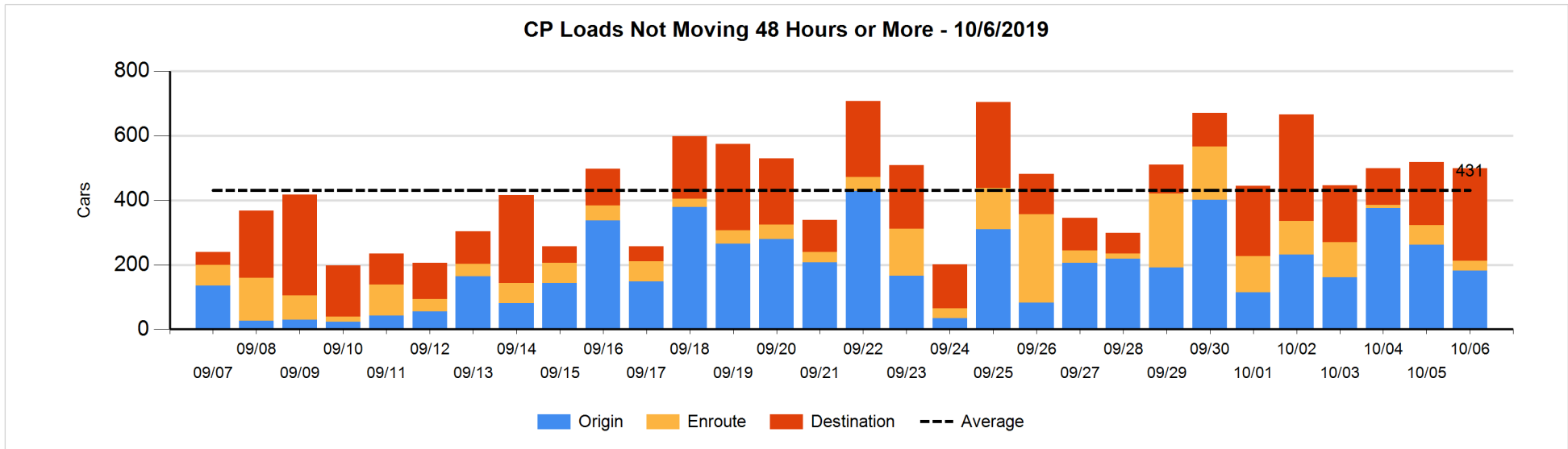
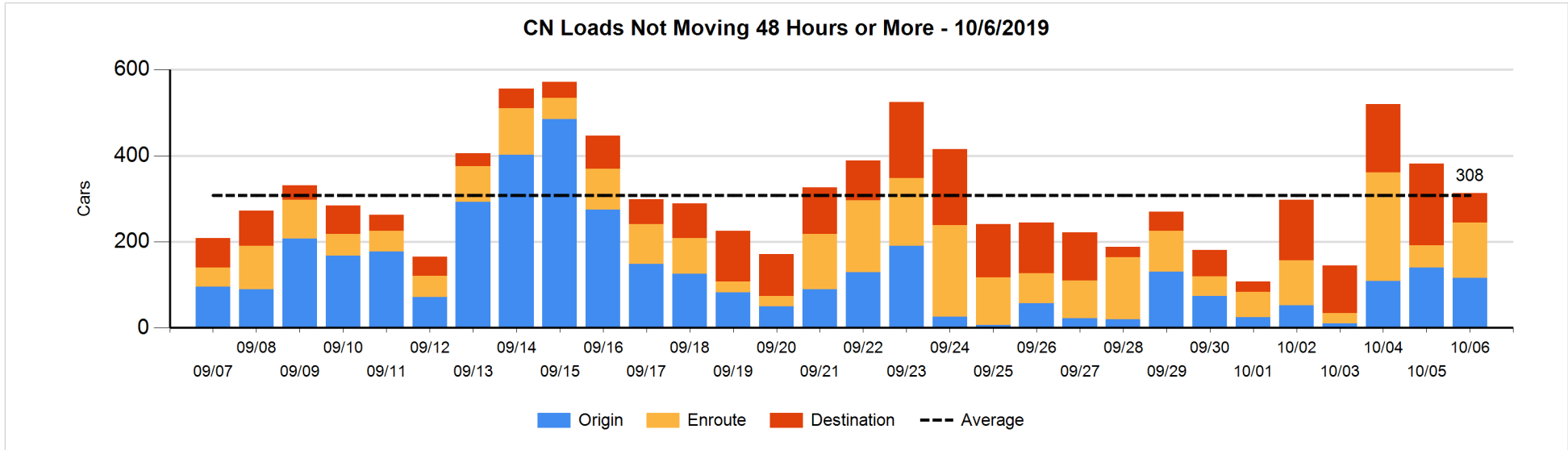


Loads Not Moving 48 Hours or More - 10/6/2019

	E Canada	Prince Rupert	Thunder Bay	USA/MEX	Vancouver	Total
CN						
Origin	1		1		114	116
Enroute	27	13	4	2	82	128
Destination	26	22	3	16	2	69
	54	35	8	18	198	313
CP						
Origin	2		13	1	165	181
Enroute	2		2	4	23	31
Destination			227		60	287
	4		242	5	248	499
US Rail / Short Line						
Origin						
Enroute				92		92
Destination	7			40	9	56
	7			132	9	148

Change in Loads Not Moving 48 Hours or More - 10/6/2019

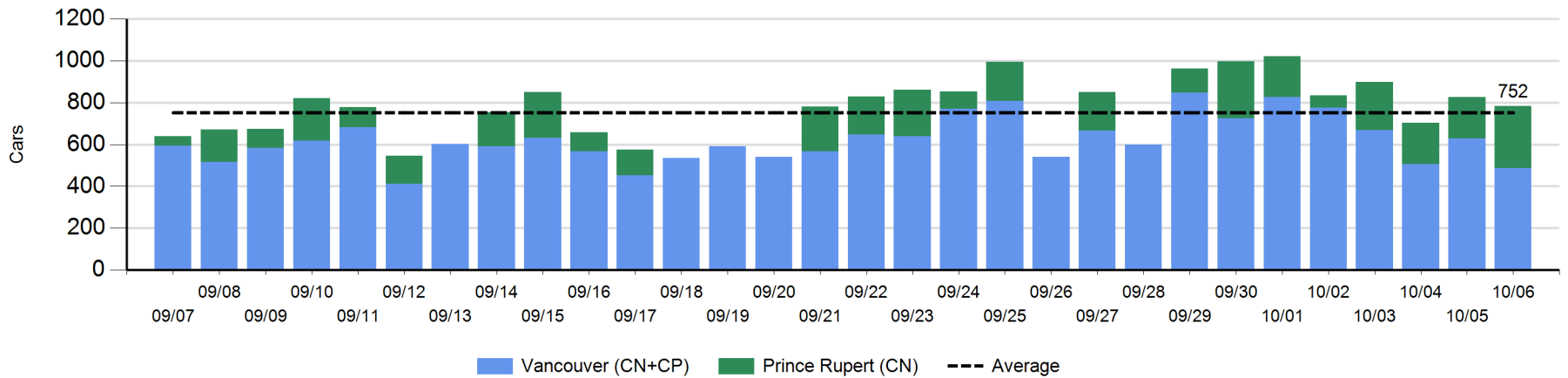
	E Canada	Prince Rupert	Thunder Bay	USA/MEX	Vancouver	Total
CN						
Origin	-3	-102	0	-25	106	-24
Enroute	1	4	0	-8	79	76
Destination	24	-112	-33	1	-1	-121
	22	-210	-33	-32	184	-69
CP						
Origin	1		13	1	-96	-81
Enroute	0		2	-48	17	-29
Destination			87		4	91
	1		102	-47	-75	-19
US Rail / Short Line						
Origin						
Enroute				84		84
Destination	0			18	-4	14
	0			102	-4	98



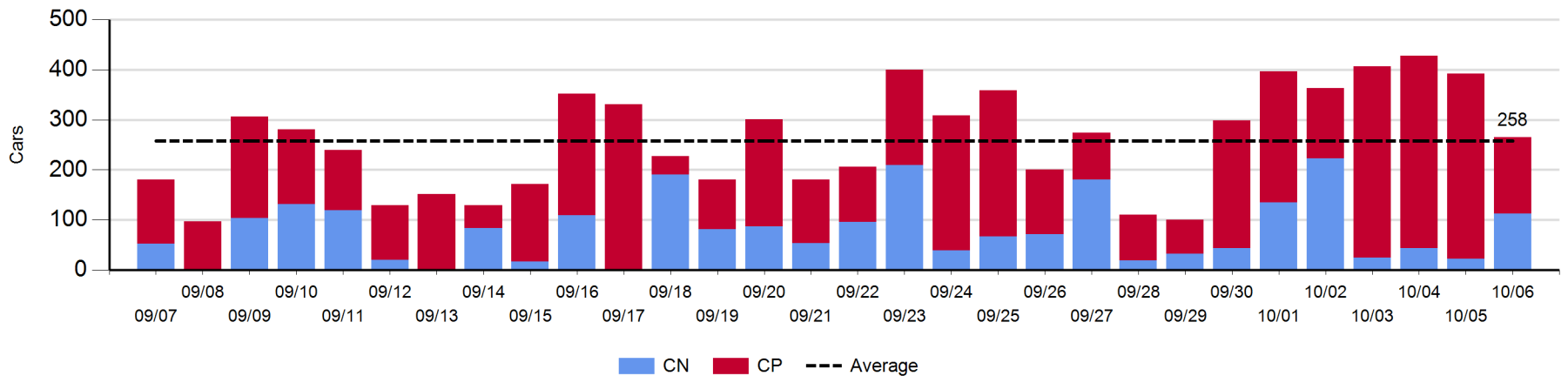
Port Unloads - 10/6/2019

	Prince Rupert	Vancouver	West Coast Total	Thunder Bay	Total
CN	297	137	434	113	547
CP		350	350	152	502
	297	487	784	265	1,049

West Coast Port Unloads - Prior 30 Days



Thunder Bay Port Unloads - Prior 30 Days



Port Terminal Status

Vancouver

Daily Activity for 10/6/2019

	Cars Arrived	Cars Received in Interchange	Cars Delivered in Interchange	Cars Placed for Unloading	Loads on Wheels at Destination As of 10/6/2019
CN	223	214	127	227	192
CP	444	111	218	235	430
SRY		20		9	37

Port Unloads

	10/06	10/05	Week To Date	Last Week
CN	137	233	1,751	1,871
CP	350	396	2,863	2,994
SRY		3	46	38

Age Profile of Loaded Cars Waiting Placement for Unloading

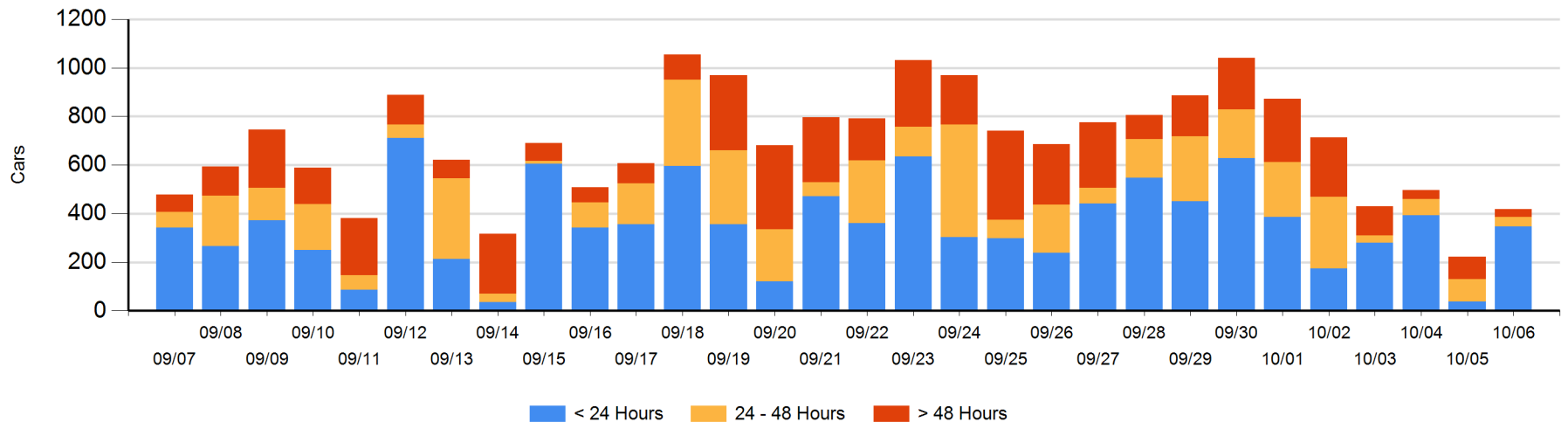
Today

	< 24 Hrs	24 - 48 Hrs	> 48-72 Hrs	> 72 Hrs	Total On Hand
CN	65	1		1	67
CP	282	37	11	21	351
SRY					0

Change in Last 24 Hours

	< 24 Hrs	24-48 Hrs	48 - 72 Hrs	> 72 Hrs
CN	64	-49	-50	-15
CP	245	-5	3	3
SRY				

Loaded Cars on Hand Vancouver Waiting for Placement - Last 30 Days All Railways



Port Terminal Status

Prince Rupert

Daily Activity for 10/6/2019

	Cars Arrived	Cars Received in Interchange	Cars Delivered in Interchange	Cars Placed for Unloading	Loads on Wheels at Destination As of 10/6/2019
CN	196			195	232

Port Unloads

	10/06	10/05	Week To Date	Last Week
CN	297	197	1,450	793

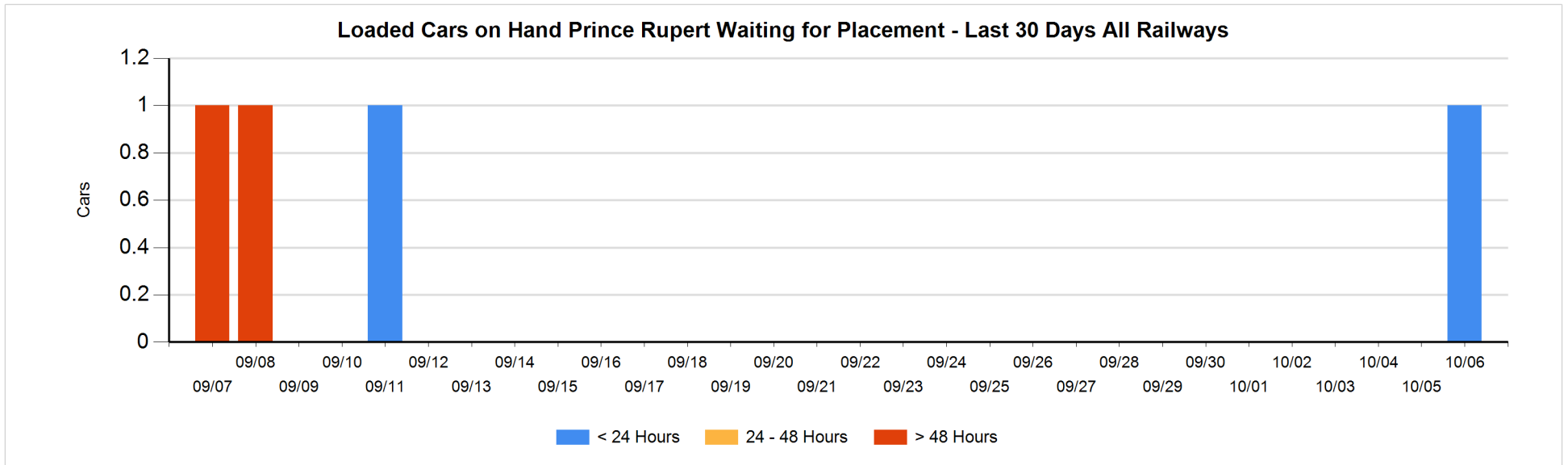
Age Profile of Loaded Cars Waiting Placement for Unloading

Today

	< 24 Hrs	24 - 48 Hrs	> 48-72 Hrs	> 72 Hrs	Total On Hand
CN	1				1

Change in Last 24 Hours

	< 24 Hrs	24-48 Hrs	48 - 72 Hrs	> 72 Hrs
CN	1			



Port Terminal Status

Thunder Bay

Daily Activity for 10/6/2019

	Cars Arrived	Cars Received in Interchange	Cars Delivered in Interchange	Cars Placed for Unloading	Loads on Wheels at Destination As of 10/6/2019
CN	125			103	383
CP	309			189	694

Port Unloads

	10/06	10/05	Week To Date	Last Week
CN	113	22	606	617
CP	152	370	1,943	1,135

Age Profile of Loaded Cars Waiting Placement for Unloading

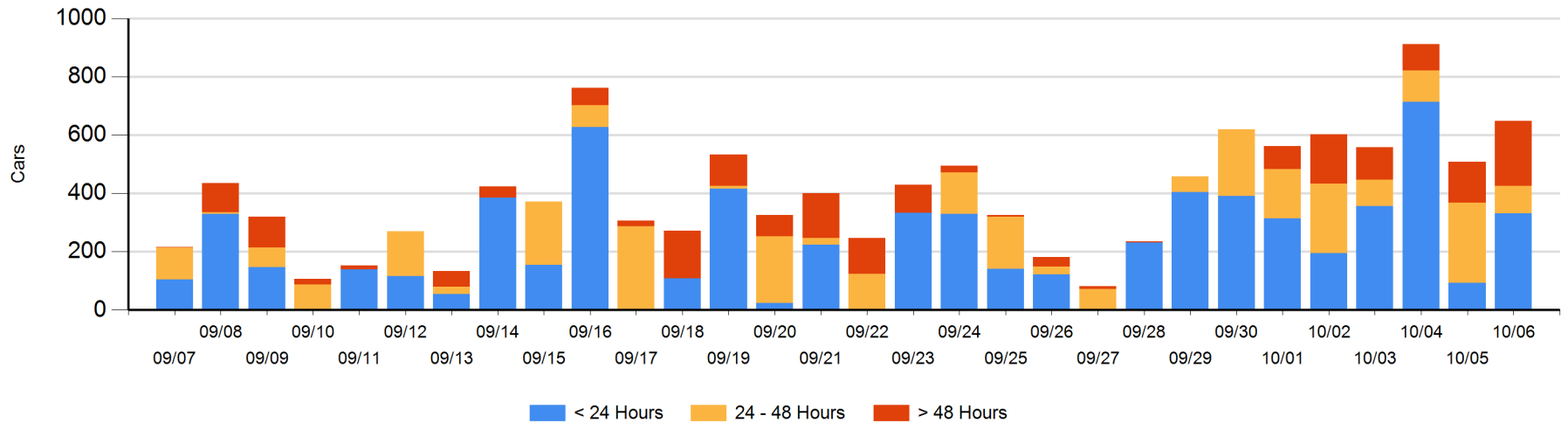
Today

	< 24 Hrs	24 - 48 Hrs	> 48-72 Hrs	> 72 Hrs	Total On Hand
CN	22				22
CP	309	94	154	70	627

Change in Last 24 Hours

	< 24 Hrs	24-48 Hrs	48 - 72 Hrs	> 72 Hrs
CN	22			
CP	215	-180	91	-7

Loaded Cars on Hand Thunder Bay Waiting for Placement - Last 30 Days All Railways



Measurement Definitions

Loads on Wheels	<p>Count of loaded rail cars including all rail cars that have been released loaded at origin and have not been reported by the railway as unloaded at destination.</p> <p>Counts include all rail cars (hopper cars and boxcars) moving within a pipeline.</p>
Loads Not Moving	<p>Loaded rail cars for which the railways have not reported a movement event for 48 hours or more whether the rail car is at origin, enroute or at destination.</p>
Port Unloads	<p>Count of rail cars reported by railways as unloaded at the western port destinations of Vancouver, Prince Rupert and Thunder Bay.</p> <p>Unload counts include all rail cars (hopper cars and boxcars) unloaded by all receivers including major port terminals, transloaders and other receivers.</p>
Cars Arrived	<p>Count of rail cars reported as arrived at the destination railway terminal.</p>
Cars Received in Interchange	<p>Count of rail cars received in interchange by each railway within a destination railway terminal. Interchange activity is tracked for the Vancouver and Thunder Bay pipelines as applicable.</p>
Cars Delivered in Interchange	<p>Count of rail cars delivered in interchange by each railway within a destination railway terminal. Interchange activity is tracked for the Vancouver and Thunder Bay pipelines as applicable.</p>
Cars Placed for Unloading	<p>Count of rail cars reported by the railways as placed loaded at the receiver's facility for unloading.</p>
Loads on Wheels at Destination	<p>Count of rail cars that remain under load within the destination railway terminal including rail cars that have been reported as placed for unloading but not yet reported as unloaded.</p>
Waiting Placement for Unloading	<p>Count of rail cars that have been reported as arrived at the destination railway terminal but not reported as placed for unloading by the railway.</p> <p>For the Ports of Vancouver, Prince Rupert and Thunder Bay the count of rail cars waiting placement for unloading is categorized by age – i.e. the elapsed time from arrival at destination to the current report date.</p>