

SPEED READ

- Loads on wheels declined overnight, reflecting a decline in CN traffic offset by higher CP volumes. On a net basis, volumes decreased due to reduced traffic in the Thunder Bay and Prince Rupert corridors offset by higher volumes in the USA/MEX, Vancouver and E. Canada corridors.
- Network fluidity deteriorated overnight, led by a rise in idle car counts on both CN and CP by 53% (+166) and 22% (+111), respectively. The total count of cars for 4+ days on both railways rose 74% (+108) overnight - currently at 253 cars.
- One day in Week 10 unloads now behind prior week's performance by less than 150 unloads, reflecting reduced unloads at Vancouver and Prince Rupert offset by improved week over week performance at Thunder Bay.

Loads on Wheels

- Loads on wheels declined 2% (-207) overnight, due to lower traffic on CN offset by higher traffic on CP - combined total at 8,969 and 15% above the trailing 30-day average.
- On a net basis, the decline in loads on wheels reflects reduced traffic in the Thunder Bay and Prince Rupert corridors offset by higher volumes in the USA/MEX, Vancouver and E. Canada corridors.
- CN volumes fell 5% (-278) overnight, with lower traffic across all corridors. System wide CN loads on wheels presently at 4,974 and 30% above the trailing 30-day average.
- CP volumes increased 3% (+104) overnight, driven by an increase in traffic across all corridors other than Thunder Bay. CP system wide loads on wheels currently at 3,731 and 2% below the trailing 30-day average.
- Vancouver currently at 4,484, increased marginally by 1% (+53) overnight, now 5% above the trailing 30-day average.
- The Prince Rupert pipeline currently at 1,692, declined 6% (-114) overnight, and 62% above the trailing 30-day average.
- Thunder Bay volumes declined significantly by 14% (-263) overnight - now at 1,665 and 17% above the trailing 30-day average, with 60% of traffic moving on CP.

Hopper Car Rationing

- No hopper cars were rationed by either CN or CP in week 8.

Loads Not Moving

- **The count of cars not moving for 48+ hours gained 34% (+277) overnight, marking higher counts on both CN and CP. Idle car counts now at 1,098, the highest seen in the last 30 days, and 44% above the trailing 30-day average.**
- CN
 - **The count of idle cars for 48+ hours rose 53% (+166) overnight - currently at 479 cars.**
 - The number of cars idle for 4+ days rose 20% (+9) overnight - now at 54 cars.
 - The count of cars not moving for 7+ days increased 250% (+25) overnight - currently at 35 cars.
 - Vancouver represents 5% of all idle cars.
 - In total 44% of all idle cars are dwelling at origin locations.
- CP
 - **CP idle car counts for 48+ hours increased 22% (+111) overnight - currently at 619 cars.**
 - The number of cars idle for 4+ days increased 99% (+99) overnight - now at 199 cars.

- The number of cars idle for 7+ days increased 28% (+8) overnight - currently at 37 cars.
- Vancouver accounts for 59% of all idle cars.
- In total 52% of all idle cars are dwelling at origin locations.

Port Performance

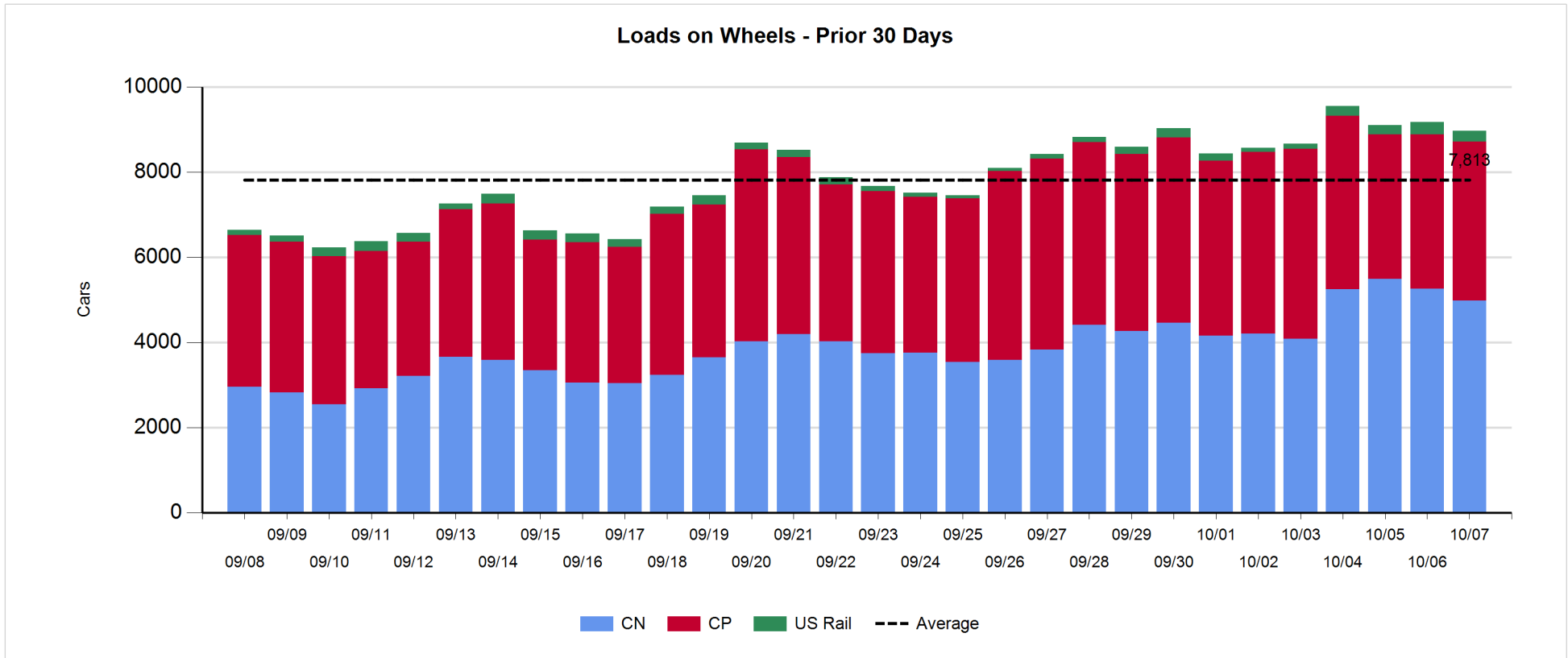
- CN and CP reported a total of 1,155 cars unloaded at the three major ports, 13% above the trailing 30-day average. One day in Week 10 unloads now behind last week's pace by fewer than 150 unloads, reflecting reduced unloads at Vancouver and Prince Rupert offset by higher unloads at Thunder Bay.
- Vancouver
 - 514 unloads reported by CN and CP at the Port of Vancouver; CN - 191 and CP - 323. One day in Week 10 unloads are tracking behind last week's performance by 200 unloads.
 - There are more than 850 cars on site at Vancouver with more than 700 cars arriving at the port in the last 24 hours.
 - CN and CP have nearly 1,350 cars in British Columbia en route to Vancouver, with 950 cars at Kamloops and west, and 54% of traffic moving on CN.
- Prince Rupert
 - Prince Rupert reported 218 unloads, now behind last week's unloads after one day by 50 unloads.
 - Loads on wheels now above 1,000 cars - currently at 1,692 cars.
 - There are 500 cars west of Jasper en route to Prince Rupert.
 - There are more than 400 cars on site at Prince Rupert with 400 cars arriving at the port in the last 24 hours.
- Thunder Bay
 - 423 unloads were reported at Thunder Bay yesterday. One day in Week 10 unloads are tracking ahead of last week's pace by more than 100 unloads.
 - There are 950 cars on site at Thunder Bay with 300 cars arriving at the port in the prior 24 hours.
 - There are nearly 350 cars en route to Thunder Bay from Winnipeg and east.

Daily Loads on Wheels - 10/7/2019

	E Canada	Prince Rupert	Thunder Bay	USA/MEX	Vancouver	Total
CN	377	1,692	663	179	2,063	4,974
CP	174		1,002	164	2,391	3,731
Short Line	7				30	37
US Rail				227		227
	558	1,692	1,665	570	4,484	8,969

Change in Loads on Wheels - Prior 24 Hours

	E Canada	Prince Rupert	Thunder Bay	USA/MEX	Vancouver	Total
CN	-5	-114	-77	-32	-50	-278
CP	31		-186	149	110	104
Short Line	-4				-7	-11
US Rail				-22		-22
	22	-114	-263	95	53	-207

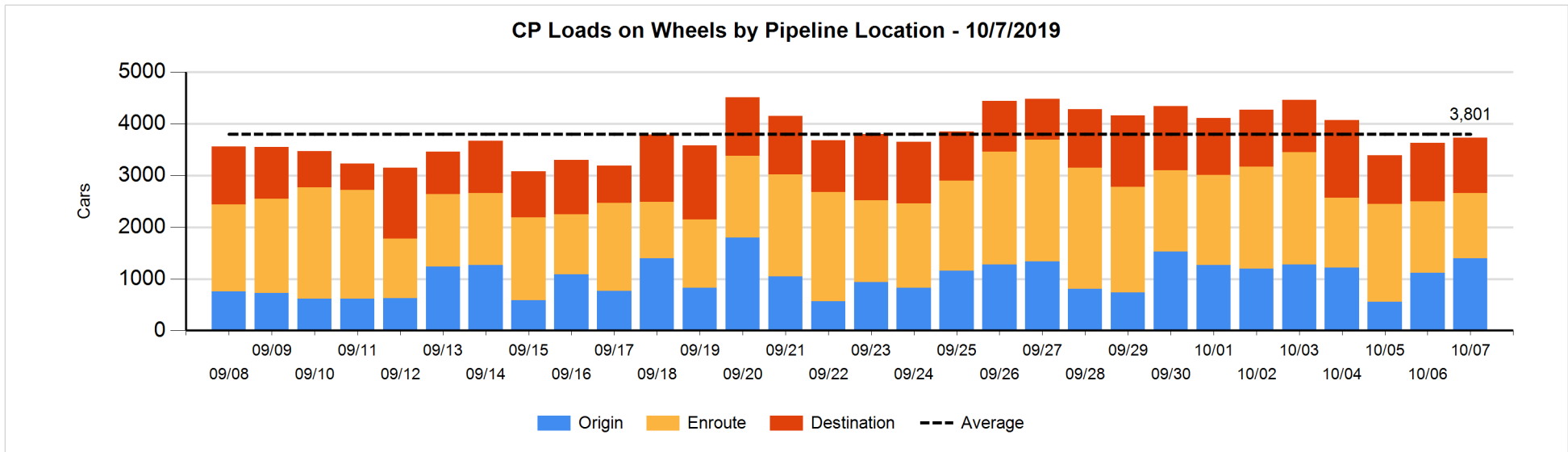
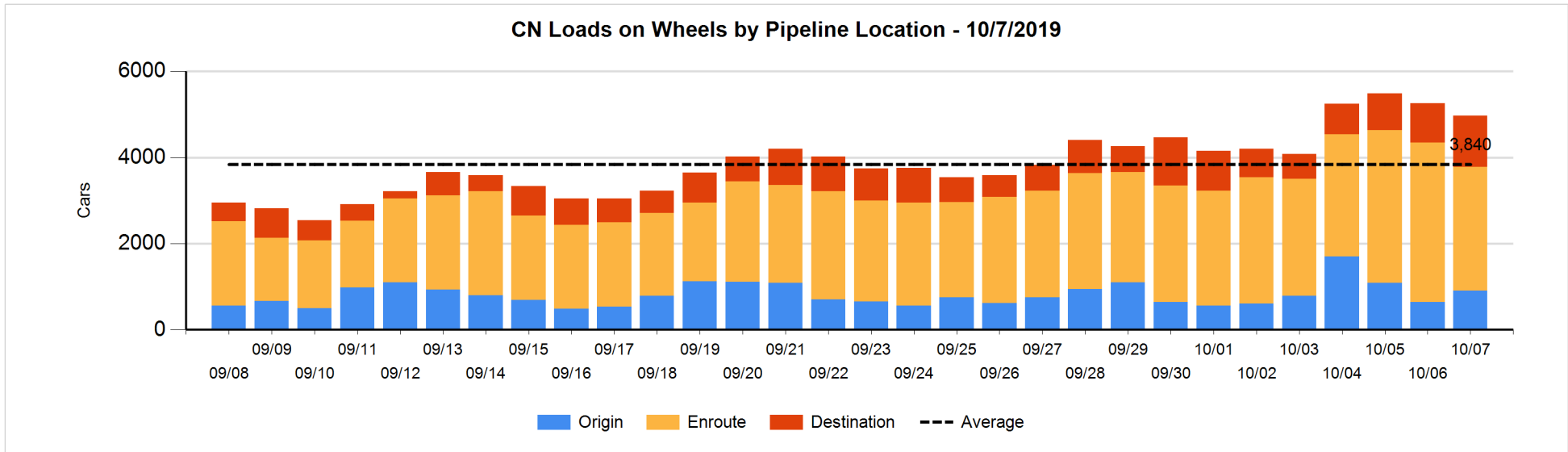


Daily Loads on Wheels By Pipeline Location - 10/7/2019

	E Canada	Prince Rupert	Thunder Bay	USA/MEX	Vancouver	Total
CN						
Origin		543	125	23	221	912
Enroute	335	729	223	137	1,444	2,868
Destination	42	420	315	19	398	1,194
	377	1,692	663	179	2,063	4,974
CP						
Origin	85		233	150	929	1,397
Enroute	89		131	14	1,025	1,259
Destination			638		437	1,075
	174		1,002	164	2,391	3,731
US Rail / Short Line						
Origin						
Enroute				106		106
Destination	7			121	30	158
	7			227	30	264

Change in Daily Loads on Wheels By Pipeline Location - Prior 24 Hours

	E Canada	Prince Rupert	Thunder Bay	USA/MEX	Vancouver	Total
CN						
Origin	-1	84	124	23	44	274
Enroute	-15	-386	-133	-5	-300	-839
Destination	11	188	-68	-50	206	287
	-5	-114	-77	-32	-50	-278
CP						
Origin	31		-73	141	185	284
Enroute	0		-57	8	-82	-131
Destination			-56		7	-49
	31		-186	149	110	104
US Rail / Short Line						
Origin						
Enroute	-4			-76		-80
Destination	0			54	-7	47
	-4			-22	-7	-33

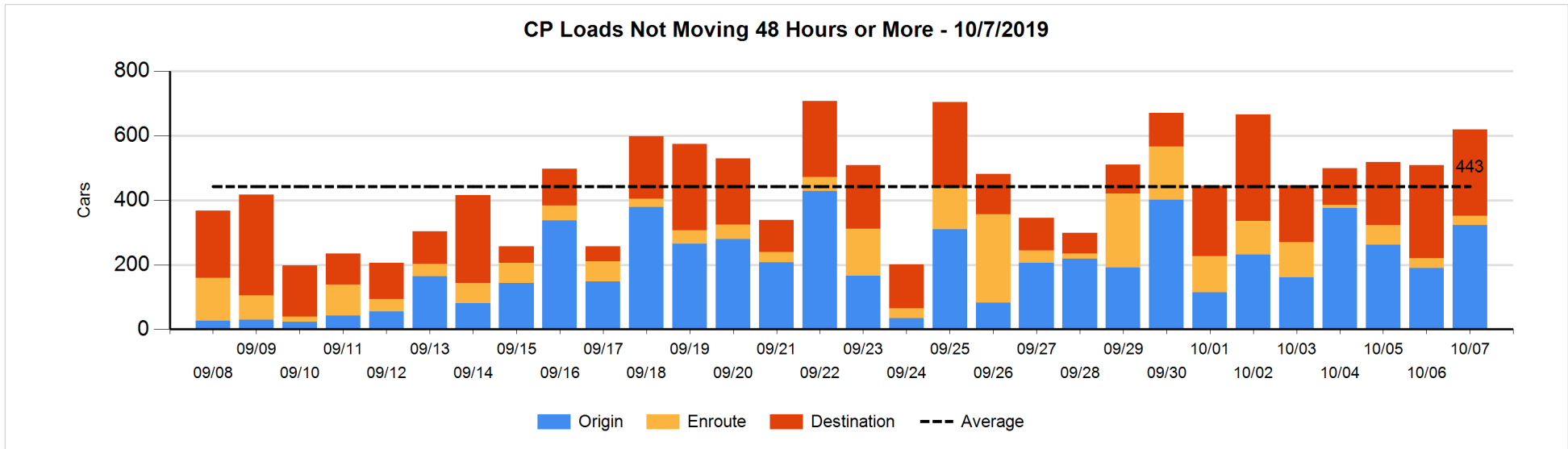
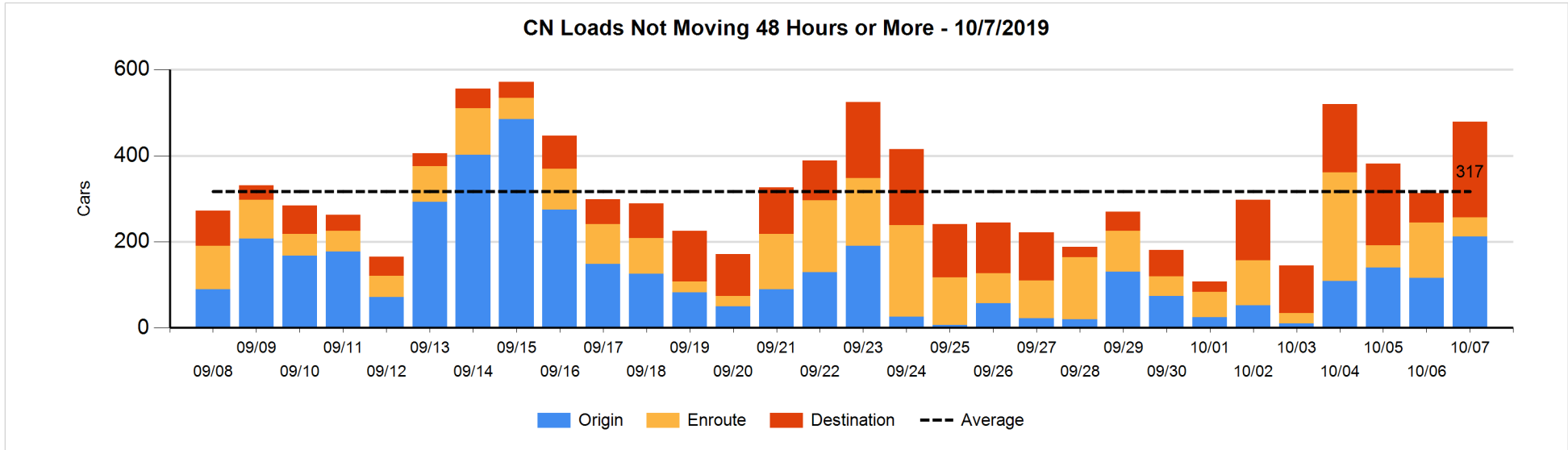


Loads Not Moving 48 Hours or More - 10/7/2019

	E Canada	Prince Rupert	Thunder Bay	USA/MEX	Vancouver	Total
CN						
Origin		209	1		2	212
Enroute	13	4	5	2	21	45
Destination	26	22	159	12	3	222
	39	235	165	14	26	479
CP						
Origin	1		26	1	294	322
Enroute	2		3	5	19	29
Destination			218		50	268
	3		247	6	363	619
US Rail / Short Line						
Origin						
Enroute				83		83
Destination				25	7	32
				108	7	115

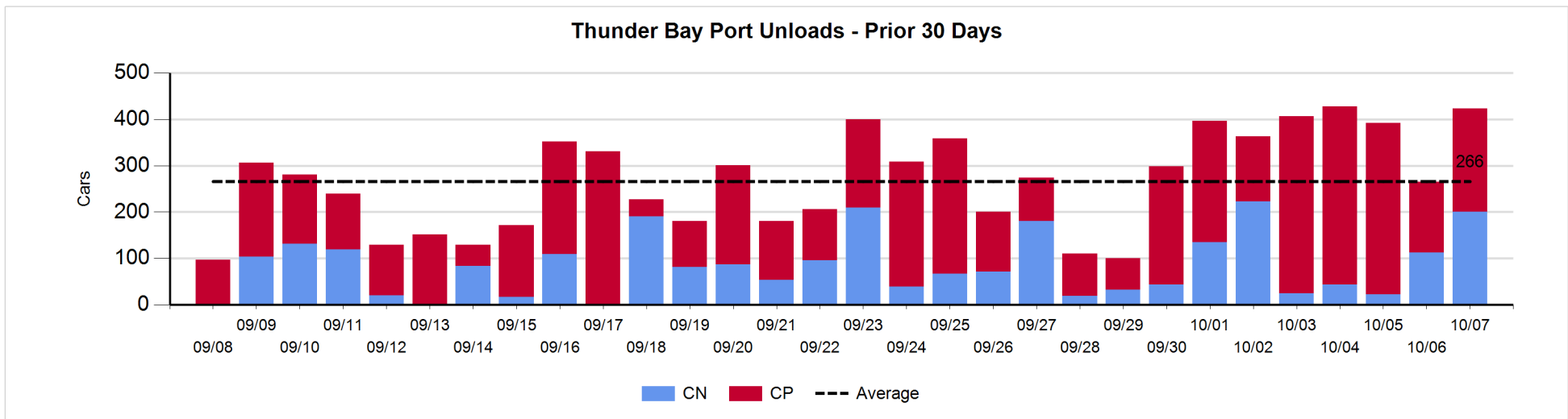
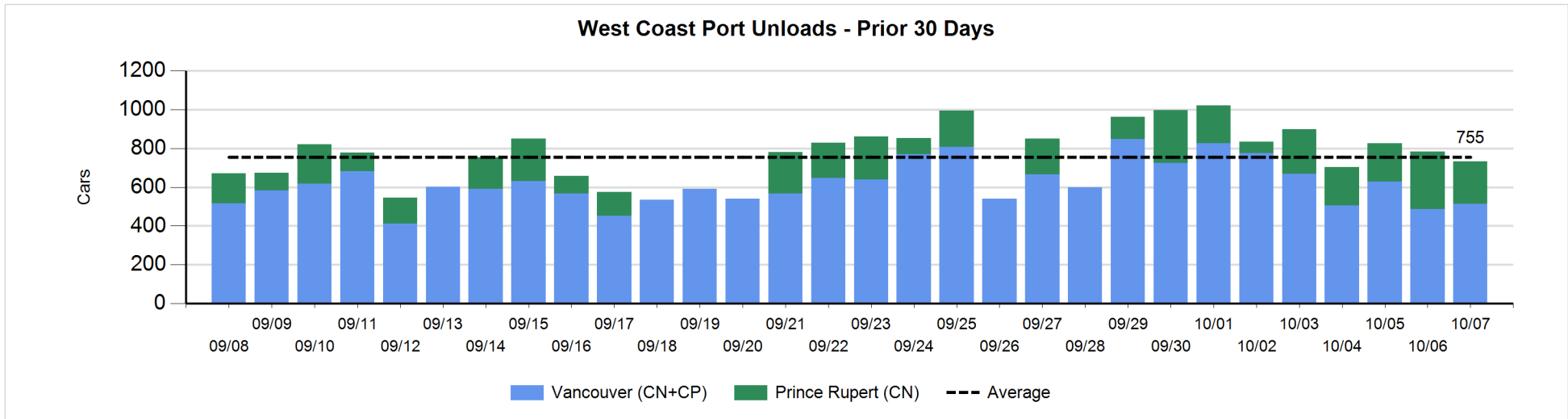
Change in Loads Not Moving 48 Hours or More - 10/7/2019

	E Canada	Prince Rupert	Thunder Bay	USA/MEX	Vancouver	Total
CN						
Origin	-1	209	0		-112	96
Enroute	-14	-9	1	0	-61	-83
Destination	0	0	156	-4	1	153
	-15	200	157	-4	-172	166
CP						
Origin	-1		13	0	120	132
Enroute	0		1	1	-4	-2
Destination			-9		-10	-19
	-1		5	1	106	111
US Rail / Short Line						
Origin						
Enroute				-9		-9
Destination	-7			-15	-2	-24
	-7			-24	-2	-33



Port Unloads - 10/7/2019

	Prince Rupert	Vancouver	West Coast Total	Thunder Bay	Total
CN	218	191	409	201	610
CP		323	323	222	545
	218	514	732	423	1,155



Port Terminal Status

Vancouver

Daily Activity for 10/7/2019

	Cars Arrived	Cars Received in Interchange	Cars Delivered in Interchange	Cars Placed for Unloading	Loads on Wheels at Destination As of 10/7/2019
CN	279	129	101	176	398
CP	450	101	131	240	437
SRY		2		4	30

Port Unloads

	10/07	10/06	Week To Date	Last Week
CN	191	137	191	1,751
CP	323	350	323	2,863
SRY	9		9	46

Age Profile of Loaded Cars Waiting Placement for Unloading

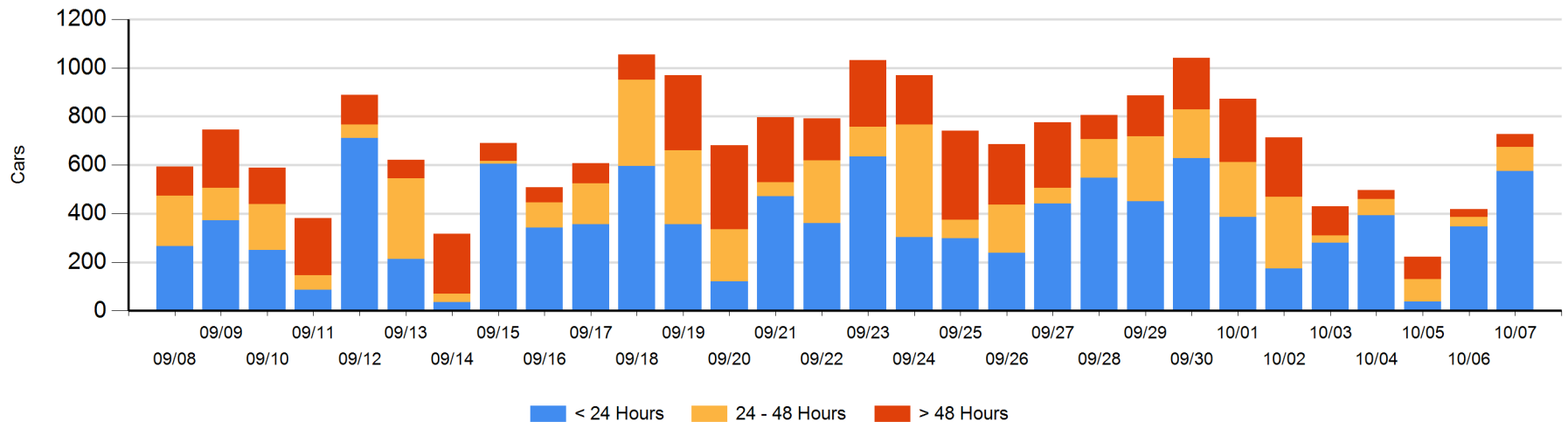
Today

	< 24 Hrs	24 - 48 Hrs	> 48-72 Hrs	> 72 Hrs	Total On Hand
CN	195	46	1	1	243
CP	381	53	37	14	485
SRY					0

Change in Last 24 Hours

	< 24 Hrs	24-48 Hrs	48 - 72 Hrs	> 72 Hrs
CN	130	45	1	0
CP	99	16	26	-7
SRY				

Loaded Cars on Hand Vancouver Waiting for Placement - Last 30 Days All Railways



Port Terminal Status

Prince Rupert

Daily Activity for 10/7/2019

	Cars Arrived	Cars Received in Interchange	Cars Delivered in Interchange	Cars Placed for Unloading	Loads on Wheels at Destination As of 10/7/2019
CN	409			215	420

Port Unloads

	10/07	10/06	Week To Date	Last Week
CN	218	297	218	1,450

Age Profile of Loaded Cars Waiting Placement for Unloading

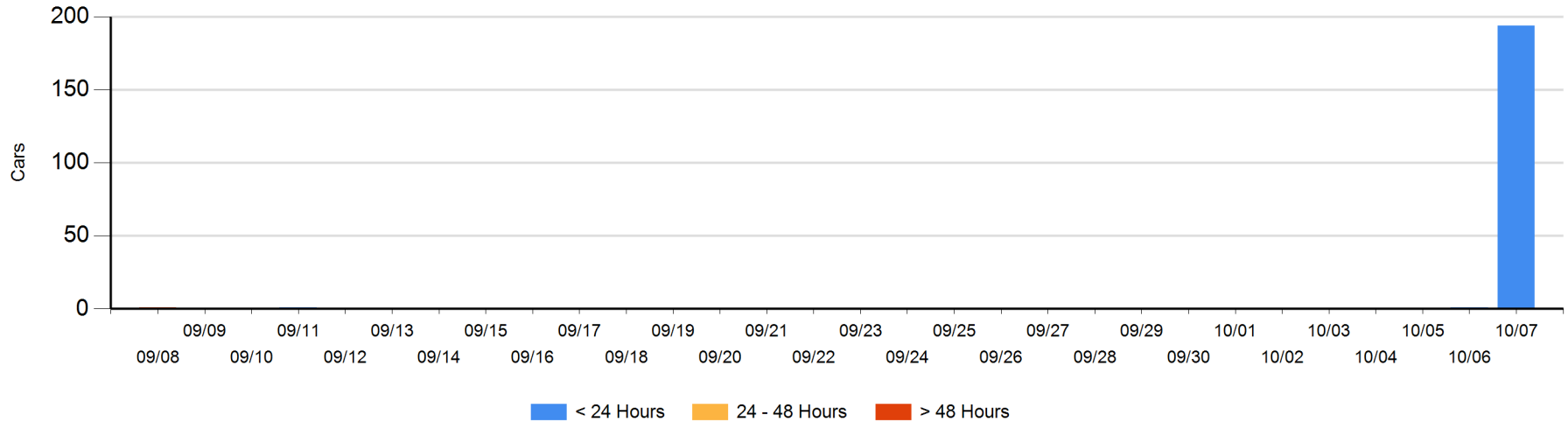
Today

	< 24 Hrs	24 - 48 Hrs	> 48-72 Hrs	> 72 Hrs	Total On Hand
CN	194				194

Change in Last 24 Hours

	< 24 Hrs	24-48 Hrs	48 - 72 Hrs	> 72 Hrs
CN	193			

Loaded Cars on Hand Prince Rupert Waiting for Placement - Last 30 Days All Railways



Port Terminal Status

Thunder Bay

Daily Activity for 10/7/2019

	Cars Arrived	Cars Received in Interchange	Cars Delivered in Interchange	Cars Placed for Unloading	Loads on Wheels at Destination As of 10/7/2019
CN	133			61	315
CP	167			179	638

Port Unloads

	10/07	10/06	Week To Date	Last Week
CN	201	113	201	606
CP	222	152	222	1,943

Age Profile of Loaded Cars Waiting Placement for Unloading

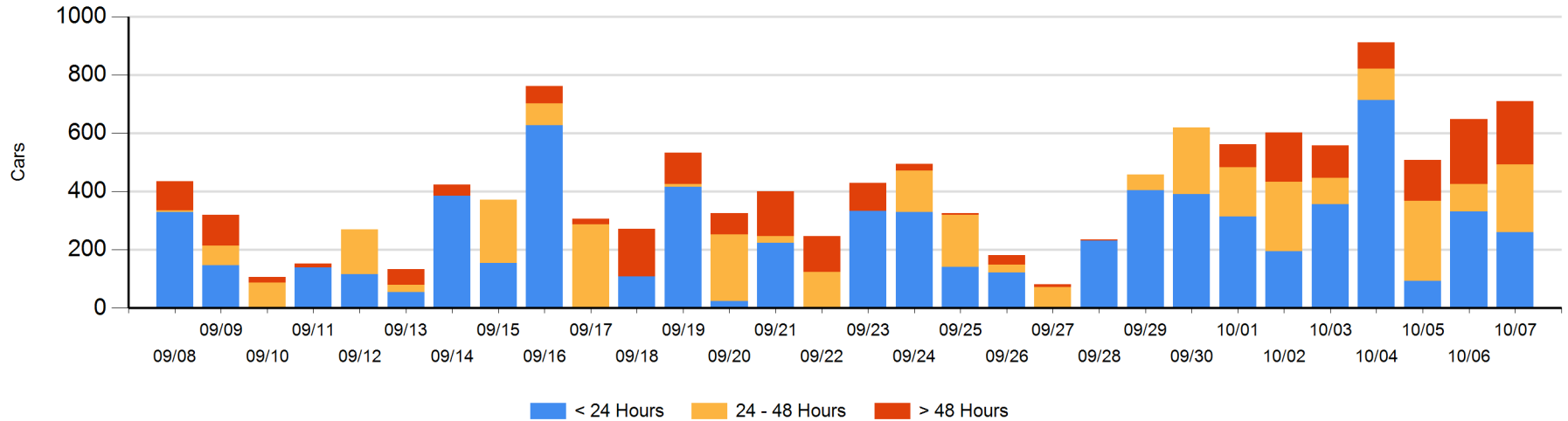
Today

	< 24 Hrs	24 - 48 Hrs	> 48-72 Hrs	> 72 Hrs	Total On Hand
CN	94				94
CP	167	231	65	152	615

Change in Last 24 Hours

	< 24 Hrs	24-48 Hrs	48 - 72 Hrs	> 72 Hrs
CN	72			
CP	-142	137	-89	82

Loaded Cars on Hand Thunder Bay Waiting for Placement - Last 30 Days All Railways



Measurement Definitions

Loads on Wheels	Count of loaded rail cars including all rail cars that have been released loaded at origin and have not been reported by the railway as unloaded at destination. Counts include all rail cars (hopper cars and boxcars) moving within a pipeline.
Loads Not Moving	Loaded rail cars for which the railways have not reported a movement event for 48 hours or more whether the rail car is at origin, enroute or at destination.
Port Unloads	Count of rail cars reported by railways as unloaded at the western port destinations of Vancouver, Prince Rupert and Thunder Bay. Unload counts include all rail cars (hopper cars and boxcars) unloaded by all receivers including major port terminals, transloaders and other receivers.
Cars Arrived	Count of rail cars reported as arrived at the destination railway terminal.
Cars Received in Interchange	Count of rail cars received in interchange by each railway within a destination railway terminal. Interchange activity is tracked for the Vancouver and Thunder Bay pipelines as applicable.
Cars Delivered in Interchange	Count of rail cars delivered in interchange by each railway within a destination railway terminal. Interchange activity is tracked for the Vancouver and Thunder Bay pipelines as applicable.
Cars Placed for Unloading	Count of rail cars reported by the railways as placed loaded at the receiver's facility for unloading.
Loads on Wheels at Destination	Count of rail cars that remain under load within the destination railway terminal including rail cars that have been reported as placed for unloading but not yet reported as unloaded.
Waiting Placement for Unloading	Count of rail cars that have been reported as arrived at the destination railway terminal but not reported as placed for unloading by the railway. For the Ports of Vancouver, Prince Rupert and Thunder Bay the count of rail cars waiting placement for unloading is categorized by age – i.e. the elapsed time from arrival at destination to the current report date.