

SPEED READ

- Loads on wheels increased overnight, reflecting a rise in both CN and CP volumes. On a net basis, volumes increased due to higher traffic in the USA/MEX, Vancouver and Prince Rupert corridors offset by lower volumes in the E. Canada and Thunder Bay corridors.
- Network fluidity deteriorated overnight, led by an increase in idle car counts on CP by 10% (+60) offset by a decline in idle car counts on CN by 6% (-27). The total count of cars for 4+ days on both railways declined 19% (-49) overnight - now at 204 cars.
- Two days in Week 10 unloads now behind prior week's performance by more than 300 unloads, reflecting lower unloads at Vancouver and Prince Rupert offset by improved week over week performance at Thunder Bay.

Loads on Wheels

- Loads on wheels increased 2% (+198) overnight, due to higher volumes on both CN and CP - combined total at 9,171 and 16% above the trailing 30-day average.
- On a net basis, the increase in loads on wheels indicates higher traffic in the USA/MEX, Vancouver and Prince Rupert corridors offset by lower volumes in the E. Canada and Thunder Bay corridors.
- CN volumes increased 4% (+218) overnight, with higher volumes in the Vancouver, USA/MEX and Prince Rupert corridors offset by reduced traffic in the Thunder Bay and E. Canada corridors. System wide CN loads on wheels now at 5,193 and 33% above the trailing 30-day average.
- CP volumes increased for the third consecutive day, up 2% (+74) overnight, driven by an increase in volumes in the USA/MEX and Thunder Bay corridors offset by a decline in traffic in the Vancouver and E. Canada corridors. CP system wide loads on wheels presently at 3,810 and in line with the trailing 30-day average.
- Vancouver currently at 4,600, gained for the third consecutive day, up 2% (+110) overnight, now 7% above the trailing 30-day average.
- The Prince Rupert pipeline currently at 1,700, increased marginally by (+8) overnight, and 58% above the trailing 30-day average.
- Thunder Bay volumes fell slightly by 1% (-9) overnight - currently at 1,656 and 14% above the trailing 30-day average, with 65% of traffic moving on CP.

Hopper Car Rationing

- No hopper cars were rationed by either CN or CP in week 8.

Loads Not Moving

- **The count of cars not moving for 48+ hours increased 3% (+33) overnight, reflecting higher counts on CP offset by reduced counts on CN. Idle car counts currently at 1,131, the highest seen in the last 30 days, and 45% above the trailing 30-day average.**
- CN
 - **The count of idle cars for 48+ hours fell 6% (-27) overnight - currently at 452 cars.**
 - The number of cars idle for 4+ days increased 31% (+17) overnight - now at 71 cars.
 - The count of cars not moving for 7+ days increased 3% (+1) overnight - currently at 36 cars.
 - Vancouver represents 5% of all idle cars.
 - In total 75% of all idle cars are dwelling at origin locations.
- CP
 - **CP idle car counts for 48+ hours increased 10% (+60) overnight - currently at 679 cars.**
 - The number of cars idle for 4+ days decreased 33% (-66) overnight - currently at 133 cars.

- The number of cars idle for 7+ days gained 46% (+17) overnight - currently at 54 cars.
- Vancouver accounts for 39% of all idle cars.
- In total 55% of all idle cars are dwelling at origin locations.

Port Performance

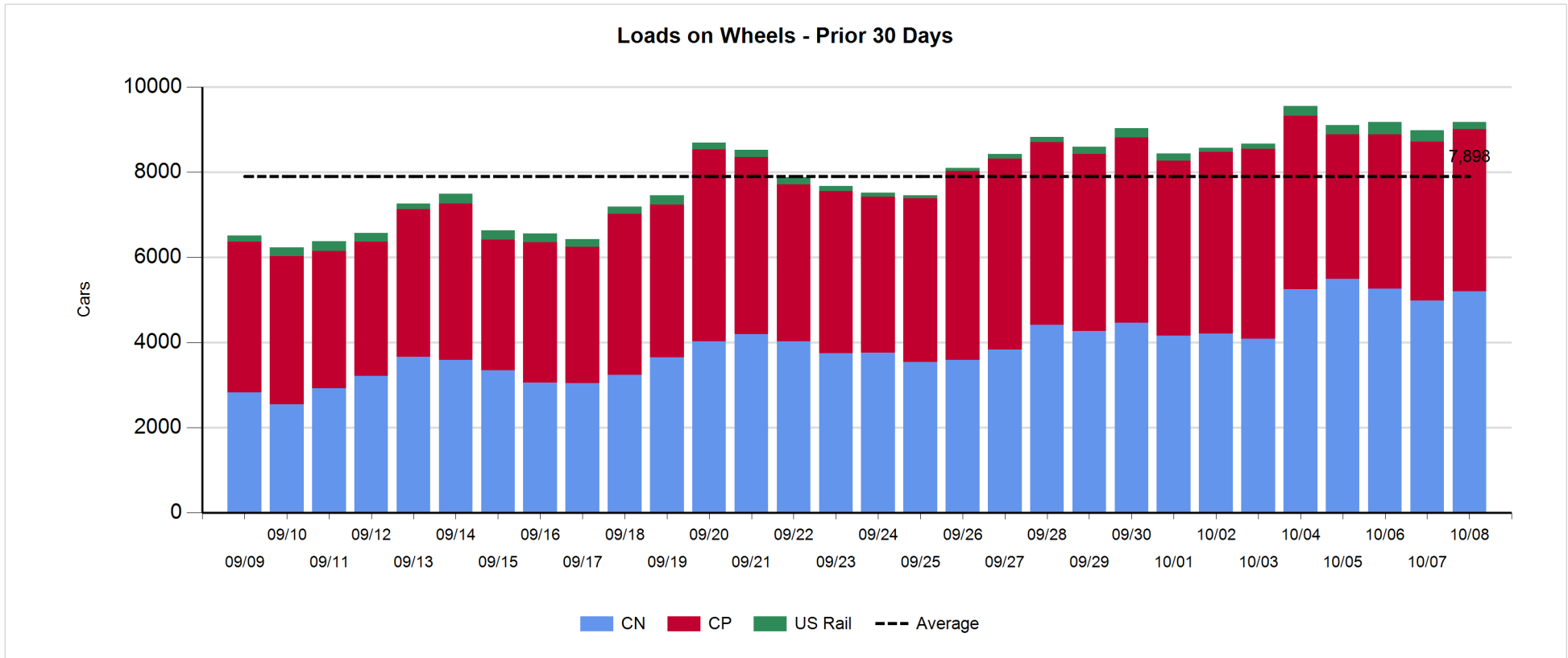
- CN and CP reported a total of 1,214 cars unloaded at the three major ports, 17% above the trailing 30-day average. Two days in Week 10 unloads now behind last week's pace by more than 300 unloads, reflecting lower unloads at Vancouver and Prince Rupert offset by higher unloads at Thunder Bay.
- Vancouver
 - 712 unloads reported by CN and CP at the Port of Vancouver; CN - 334 and CP - 378. Two days in Week 10 unloads are tracking behind last week's performance by 300 unloads.
 - There are 1,300 cars on site at Vancouver with 1,150 cars arriving at the port in the last 24 hours.
 - CN and CP have more than 950 cars in British Columbia en route to Vancouver, with nearly 600 cars at Kamloops and west, and 52% of traffic moving on CN.
- Prince Rupert
 - Prince Rupert reported 196 unloads, now behind last week's unloads after two days by 50 unloads.
 - Loads on wheels now above 1,000 cars - currently at 1,700 cars.
 - There are 300 cars west of Jasper en route to Prince Rupert.
 - There are more than 400 cars on site at Prince Rupert with 200 cars arriving at the port in the last 24 hours.
- Thunder Bay
 - 306 unloads were reported at Thunder Bay yesterday. Two days in Week 10 unloads are tracking ahead of last week's pace by nearly 50 unloads.
 - There are around 850 cars on site at Thunder Bay with about 200 cars arriving at the port in the prior 24 hours.
 - There are 300 cars en route to Thunder Bay from Winnipeg and east.

Daily Loads on Wheels - 10/8/2019

	E Canada	Prince Rupert	Thunder Bay	USA/MEX	Vancouver	Total
CN	360	1,700	577	289	2,267	5,193
CP	146		1,079	262	2,323	3,810
Short Line	2				10	12
US Rail				156		156
	508	1,700	1,656	707	4,600	9,171

Change in Loads on Wheels - Prior 24 Hours

	E Canada	Prince Rupert	Thunder Bay	USA/MEX	Vancouver	Total
CN	-17	8	-86	110	203	218
CP	-28		77	98	-73	74
Short Line	-5				-20	-25
US Rail				-69		-69
	-50	8	-9	139	110	198

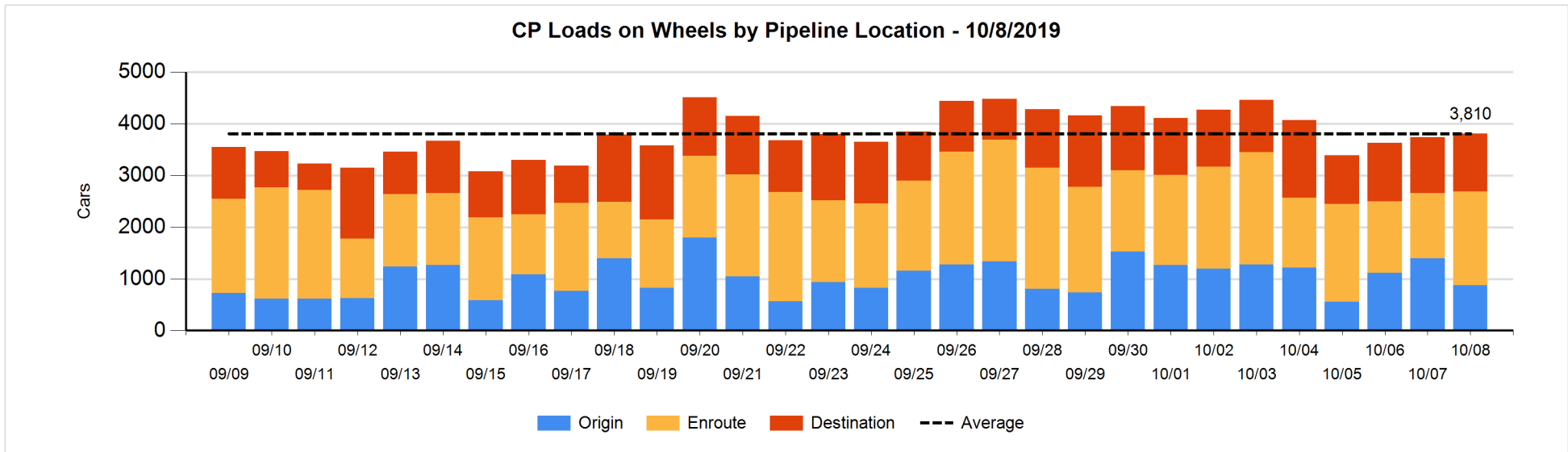
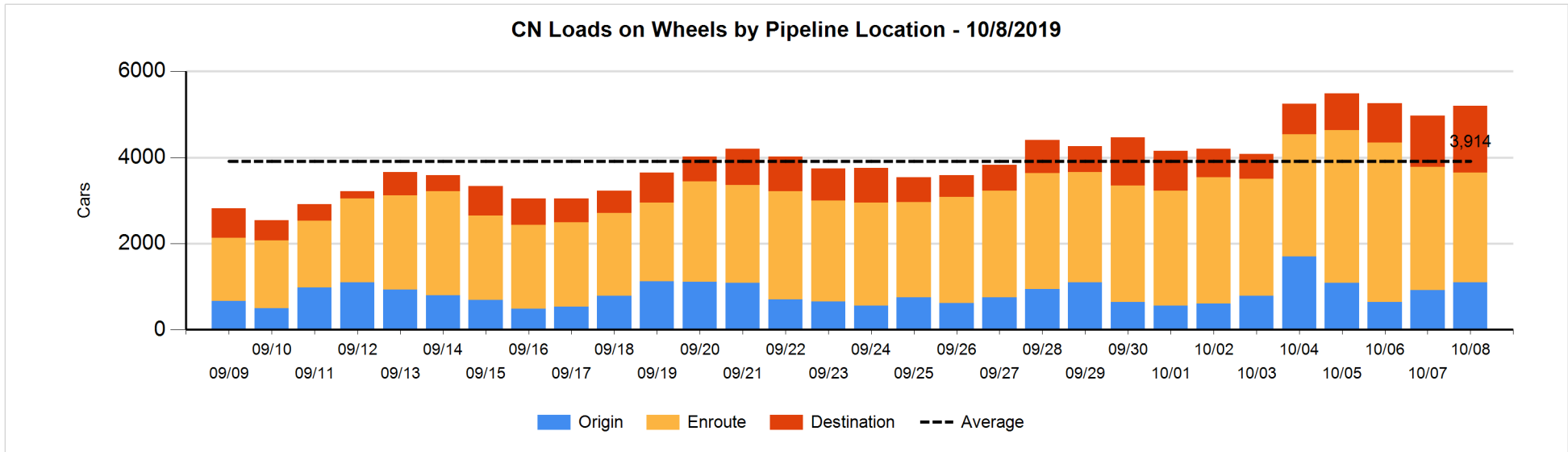


Daily Loads on Wheels By Pipeline Location - 10/8/2019

	E Canada	Prince Rupert	Thunder Bay	USA/MEX	Vancouver	Total
CN						
Origin		441	33	107	517	1,098
Enroute	245	834	229	169	1,074	2,551
Destination	115	425	315	13	676	1,544
	360	1,700	577	289	2,267	5,193
CP						
Origin	54		132	102	587	875
Enroute	91		426	160	1,132	1,809
Destination	1		521		604	1,126
	146		1,079	262	2,323	3,810
US Rail / Short Line						
Origin						
Enroute				81		81
Destination	2			75	10	87
	2			156	10	168

Change in Daily Loads on Wheels By Pipeline Location - Prior 24 Hours

	E Canada	Prince Rupert	Thunder Bay	USA/MEX	Vancouver	Total
CN						
Origin		-102	-92	84	295	185
Enroute	-90	105	6	32	-370	-317
Destination	73	5	0	-6	278	350
	-17	8	-86	110	203	218
CP						
Origin	-31		-101	-48	-342	-522
Enroute	2		295	146	102	545
Destination	1		-117		167	51
	-28		77	98	-73	74
US Rail / Short Line						
Origin						
Enroute				-25		-25
Destination	-5			-44	-20	-69
	-5			-69	-20	-94

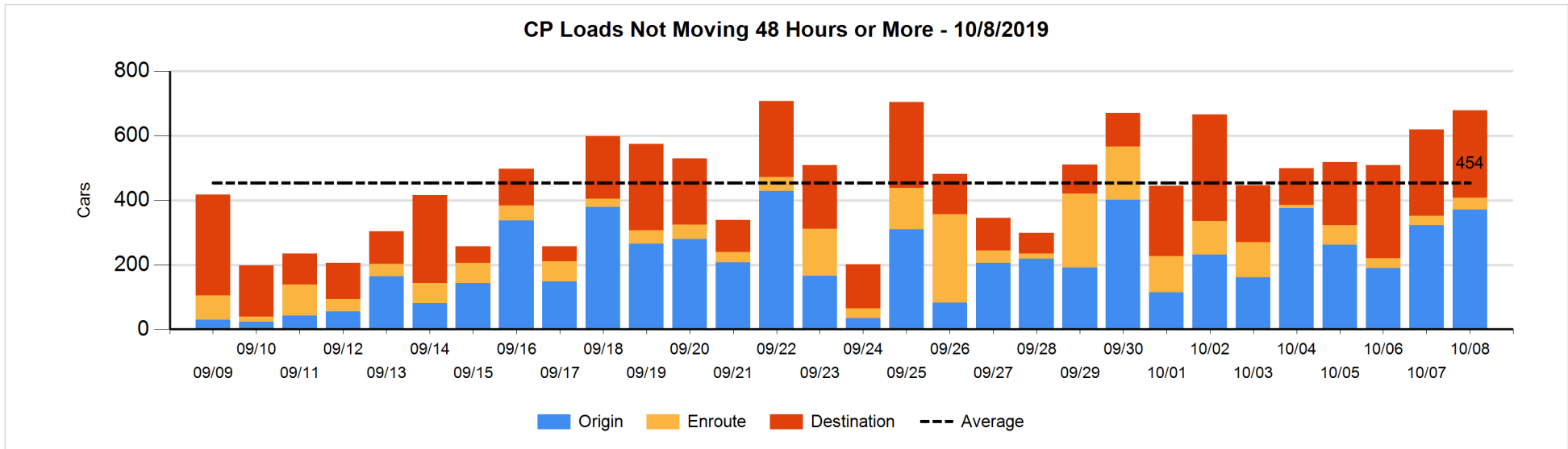
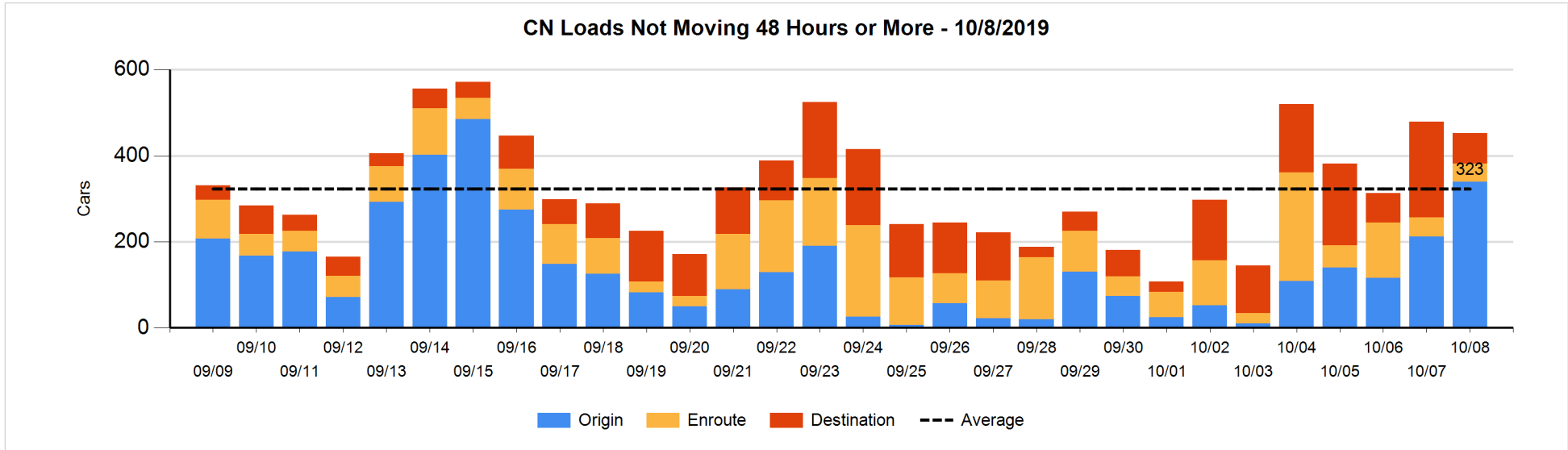


Loads Not Moving 48 Hours or More - 10/8/2019

	E Canada	Prince Rupert	Thunder Bay	USA/MEX	Vancouver	Total
CN						
Origin		336	1		2	339
Enroute	12	5	4	3	18	42
Destination	20	22	21	4	4	71
	32	363	26	7	24	452
CP						
Origin	53		76	1	241	371
Enroute	2		8	3	23	36
Destination			269		3	272
	55		353	4	267	679
US Rail / Short Line						
Origin						
Enroute				35		35
Destination				26	5	31
				61	5	66

Change in Loads Not Moving 48 Hours or More - 10/8/2019

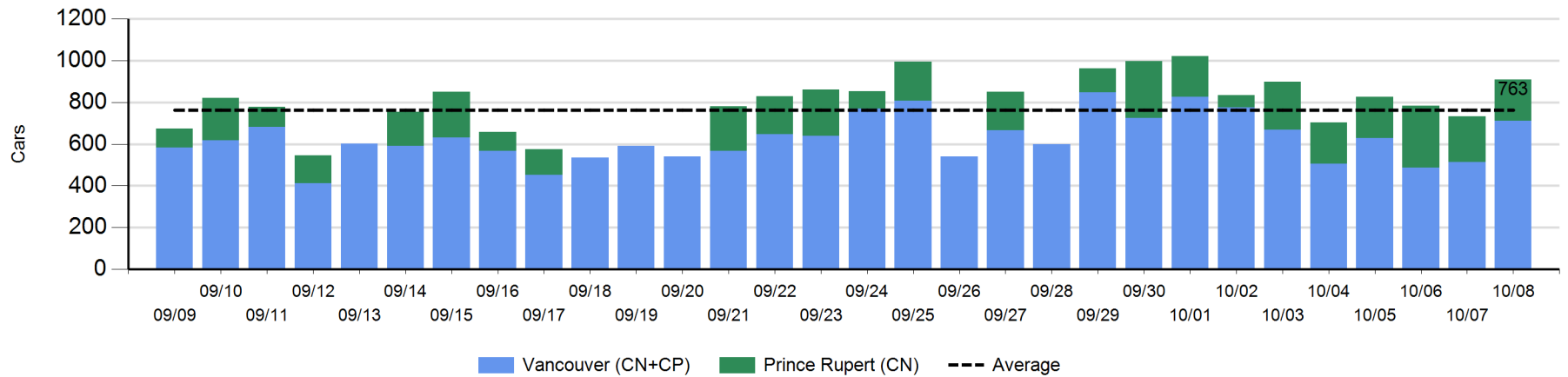
	E Canada	Prince Rupert	Thunder Bay	USA/MEX	Vancouver	Total
CN						
Origin		127	0		0	127
Enroute	-1	1	-1	1	-3	-3
Destination	-6	0	-138	-8	1	-151
	-7	128	-139	-7	-2	-27
CP						
Origin	52		50	0	-53	49
Enroute	0		5	-2	4	7
Destination			51		-47	4
	52		106	-2	-96	60
US Rail / Short Line						
Origin						
Enroute				-48		-48
Destination				1	-2	-1
				-47	-2	-49



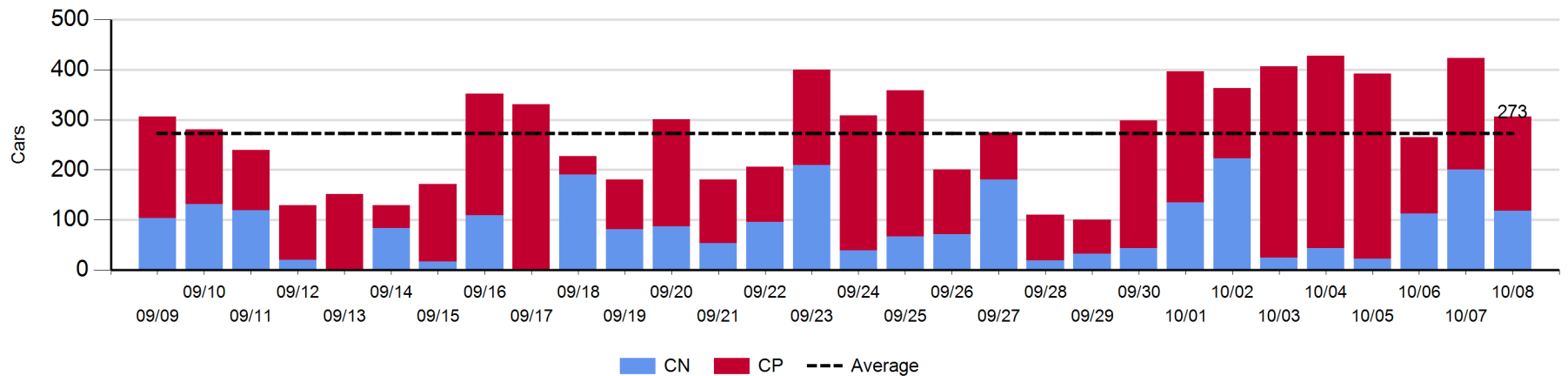
Port Unloads - 10/8/2019

	Prince Rupert	Vancouver	West Coast Total	Thunder Bay	Total
CN	196	334	530	118	648
CP		378	378	188	566
	196	712	908	306	1,214

West Coast Port Unloads - Prior 30 Days



Thunder Bay Port Unloads - Prior 30 Days



Port Terminal Status

Vancouver

Daily Activity for 10/8/2019

	Cars Arrived	Cars Received in Interchange	Cars Delivered in Interchange	Cars Placed for Unloading	Loads on Wheels at Destination As of 10/8/2019
CN	437	115	251	405	677
CP	719	251	115	519	604
SRY				15	10

Port Unloads

	10/08	10/07	Week To Date	Last Week
CN	334	191	525	1,751
CP	378	323	701	2,863
SRY	20	9	29	46

Age Profile of Loaded Cars Waiting Placement for Unloading

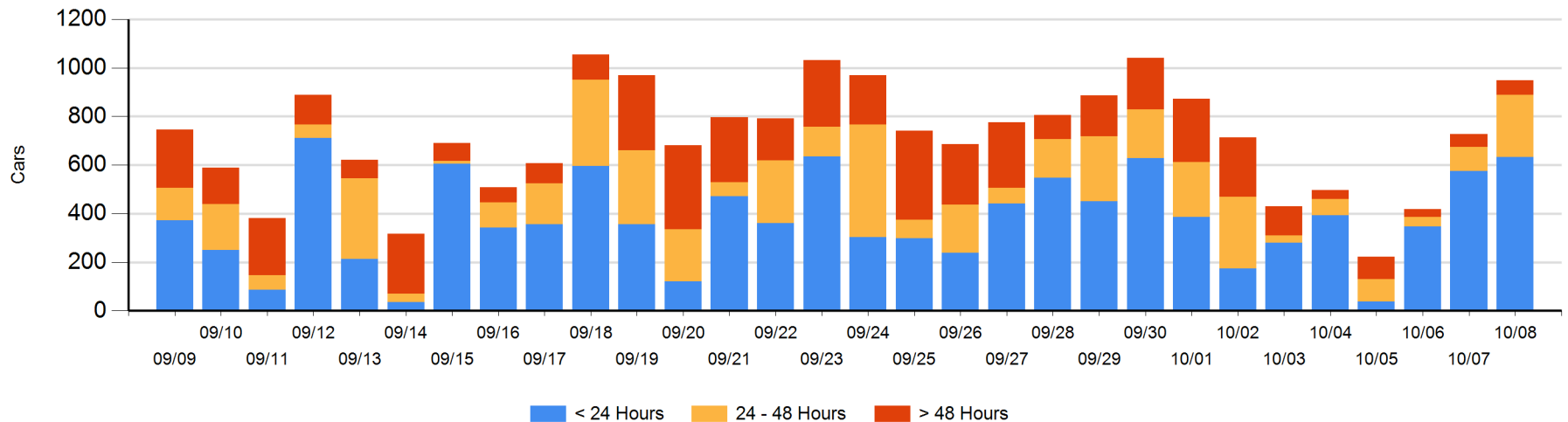
Today

	< 24 Hrs	24 - 48 Hrs	> 48-72 Hrs	> 72 Hrs	Total On Hand
CN	138	89	22	1	250
CP	494	168	31	5	698
SRY					0

Change in Last 24 Hours

	< 24 Hrs	24-48 Hrs	48 - 72 Hrs	> 72 Hrs
CN	-57	43	21	0
CP	113	115	-6	-9
SRY				

Loaded Cars on Hand Vancouver Waiting for Placement - Last 30 Days All Railways



Port Terminal Status

Prince Rupert

Daily Activity for 10/8/2019

	Cars Arrived	Cars Received in Interchange	Cars Delivered in Interchange	Cars Placed for Unloading	Loads on Wheels at Destination As of 10/8/2019
CN	201			298	425

Port Unloads

	10/08	10/07	Week To Date	Last Week
CN	196	218	414	1,450

Age Profile of Loaded Cars Waiting Placement for Unloading

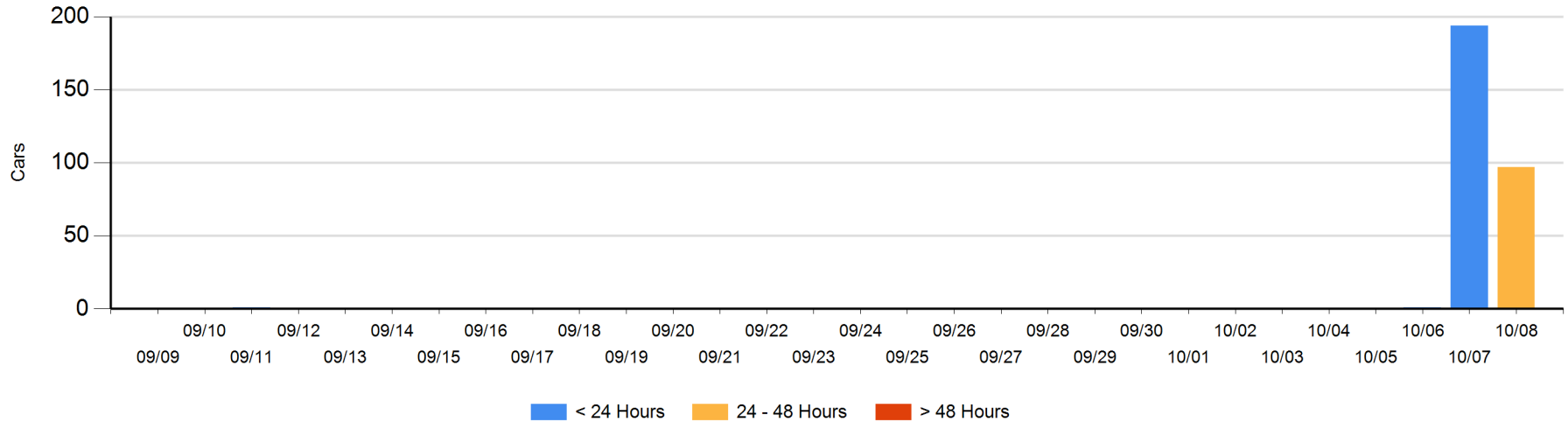
Today

	< 24 Hrs	24 - 48 Hrs	> 48-72 Hrs	> 72 Hrs	Total On Hand
CN		97			97

Change in Last 24 Hours

	< 24 Hrs	24-48 Hrs	48 - 72 Hrs	> 72 Hrs
CN	-194	97		

Loaded Cars on Hand Prince Rupert Waiting for Placement - Last 30 Days All Railways



Port Terminal Status

Thunder Bay

Daily Activity for 10/8/2019

	Cars Arrived	Cars Received in Interchange	Cars Delivered in Interchange	Cars Placed for Unloading	Loads on Wheels at Destination As of 10/8/2019
CN	118			94	315
CP	71			180	521

Port Unloads

	10/08	10/07	Week To Date	Last Week
CN	118	201	319	606
CP	188	222	410	1,943

Age Profile of Loaded Cars Waiting Placement for Unloading

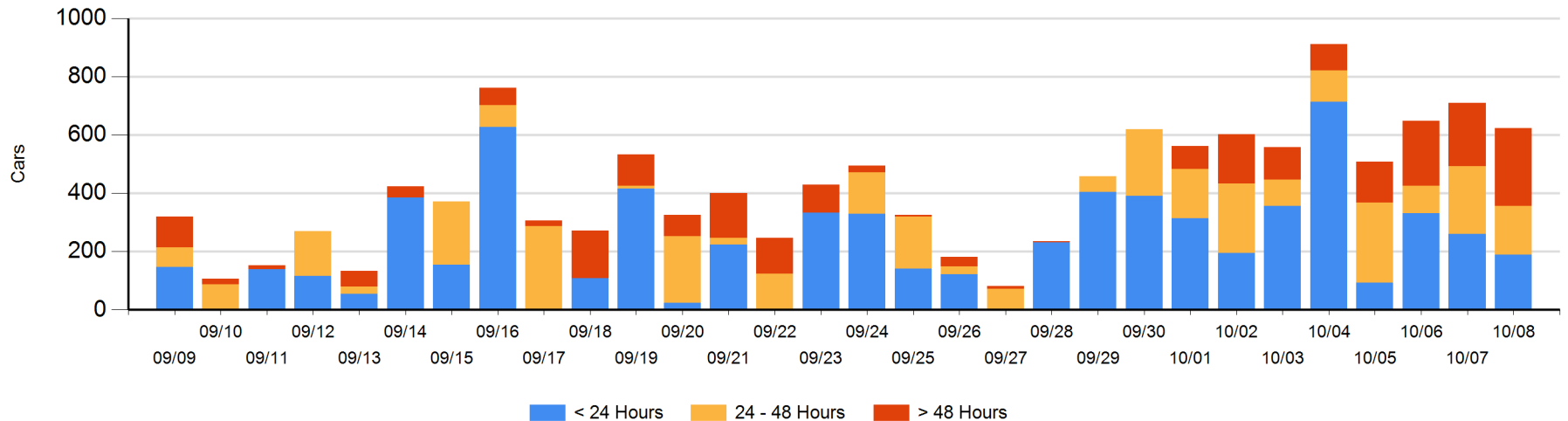
Today

	< 24 Hrs	24 - 48 Hrs	> 48-72 Hrs	> 72 Hrs	Total On Hand
CN	118				118
CP	71	167	116	152	506

Change in Last 24 Hours

	< 24 Hrs	24-48 Hrs	48 - 72 Hrs	> 72 Hrs
CN	24			
CP	-96	-64	51	0

Loaded Cars on Hand Thunder Bay Waiting for Placement - Last 30 Days All Railways



Measurement Definitions

Loads on Wheels	<p>Count of loaded rail cars including all rail cars that have been released loaded at origin and have not been reported by the railway as unloaded at destination.</p> <p>Counts include all rail cars (hopper cars and boxcars) moving within a pipeline.</p>
Loads Not Moving	<p>Loaded rail cars for which the railways have not reported a movement event for 48 hours or more whether the rail car is at origin, enroute or at destination.</p>
Port Unloads	<p>Count of rail cars reported by railways as unloaded at the western port destinations of Vancouver, Prince Rupert and Thunder Bay.</p> <p>Unload counts include all rail cars (hopper cars and boxcars) unloaded by all receivers including major port terminals, transloaders and other receivers.</p>
Cars Arrived	<p>Count of rail cars reported as arrived at the destination railway terminal.</p>
Cars Received in Interchange	<p>Count of rail cars received in interchange by each railway within a destination railway terminal. Interchange activity is tracked for the Vancouver and Thunder Bay pipelines as applicable.</p>
Cars Delivered in Interchange	<p>Count of rail cars delivered in interchange by each railway within a destination railway terminal. Interchange activity is tracked for the Vancouver and Thunder Bay pipelines as applicable.</p>
Cars Placed for Unloading	<p>Count of rail cars reported by the railways as placed loaded at the receiver's facility for unloading.</p>
Loads on Wheels at Destination	<p>Count of rail cars that remain under load within the destination railway terminal including rail cars that have been reported as placed for unloading but not yet reported as unloaded.</p>
Waiting Placement for Unloading	<p>Count of rail cars that have been reported as arrived at the destination railway terminal but not reported as placed for unloading by the railway.</p> <p>For the Ports of Vancouver, Prince Rupert and Thunder Bay the count of rail cars waiting placement for unloading is categorized by age – i.e. the elapsed time from arrival at destination to the current report date.</p>