

## SPEED READ

- Loads on wheels decreased overnight, marking a decline in CN volumes offset by higher CP volumes. On a net basis, volumes decreased due to reduced traffic across all corridors other than USA/MEX.
- Network fluidity improved overnight, led by a decline in idle car counts on both CN and CP by 11% (-49) and 34% (-231), respectively. The total count of cars for 4+ days on both railways rose 34% (+70) overnight - currently at 274 cars.
- Three days in Week 10 unloads now behind prior week's performance by 150 unloads, marking reduced unloads at Vancouver offset by improved week over week performance at Prince Rupert and Thunder Bay.

---

## Loads on Wheels

- Loads on wheels decreased 5% (-474) overnight, due to reduced traffic on CN offset by higher traffic on CP - combined total at 8,741 and 10% above the trailing 30-day average.
- On a net basis, the decline in loads on wheels reflects reduced traffic across all corridors other than USA/MEX.
- CN volumes decreased 10% (-536) overnight, with reduced traffic across all corridors. System wide CN loads on wheels currently at 4,689 and 18% above the trailing 30-day average.
- CP volumes increased marginally by 1% (+40) overnight and have now increased for the fourth consecutive day, driven by a slight increase in volumes in the Thunder Bay and USA/MEX corridors offset by a decline in the Vancouver and E. Canada corridors. CP system wide loads on wheels currently at 3,862 and 1% above the trailing 30-day average.
- Vancouver currently at 4,523, decreased 3% (-119) overnight, now 5% above the trailing 30-day average.
- The Prince Rupert pipeline currently at 1,505, decreased 12% (-197) overnight, and is 37% above the trailing 30-day average.
- Thunder Bay volumes declined 7% (-111) overnight and have now decreased for the third consecutive day - currently at 1,545 and 5% above the trailing 30-day average, with 73% of traffic moving on CP.

## Hopper Car Rationing

- No hopper cars were rationed by either CN or CP in week 8.

## Loads Not Moving

- **The count of cars not moving for 48+ hours decreased 25% (-280) overnight, marking reduced counts on both CN and CP. Idle car counts now at 851 and 9% above the trailing 30-day average.**
- CN
  - **The count of idle cars for 48+ hours declined 11% (-49) overnight - currently at 403 cars.**
  - The number of cars idle for 4+ days increased 166% (+118) overnight and have now increased for the third consecutive day - currently at 189 cars.
  - The count of cars not moving for 7+ days decreased 11% (-4) overnight - presently at 32 cars.
  - Vancouver represents 26% of all idle cars.
  - In total 28% of all idle cars are dwelling at origin locations.
- CP
  - **CP idle car counts for 48+ hours decreased 34% (-231) overnight - now at 448 cars.**
  - The number of cars idle for 4+ days declined 36% (-48) overnight - presently at 85 cars.

- The number of cars idle for 7+ days decreased 9% (-5) overnight - presently at 49 cars.
- Vancouver accounts for 22% of all idle cars.
- In total 44% of all idle cars are dwelling at origin locations.

### **Port Performance**

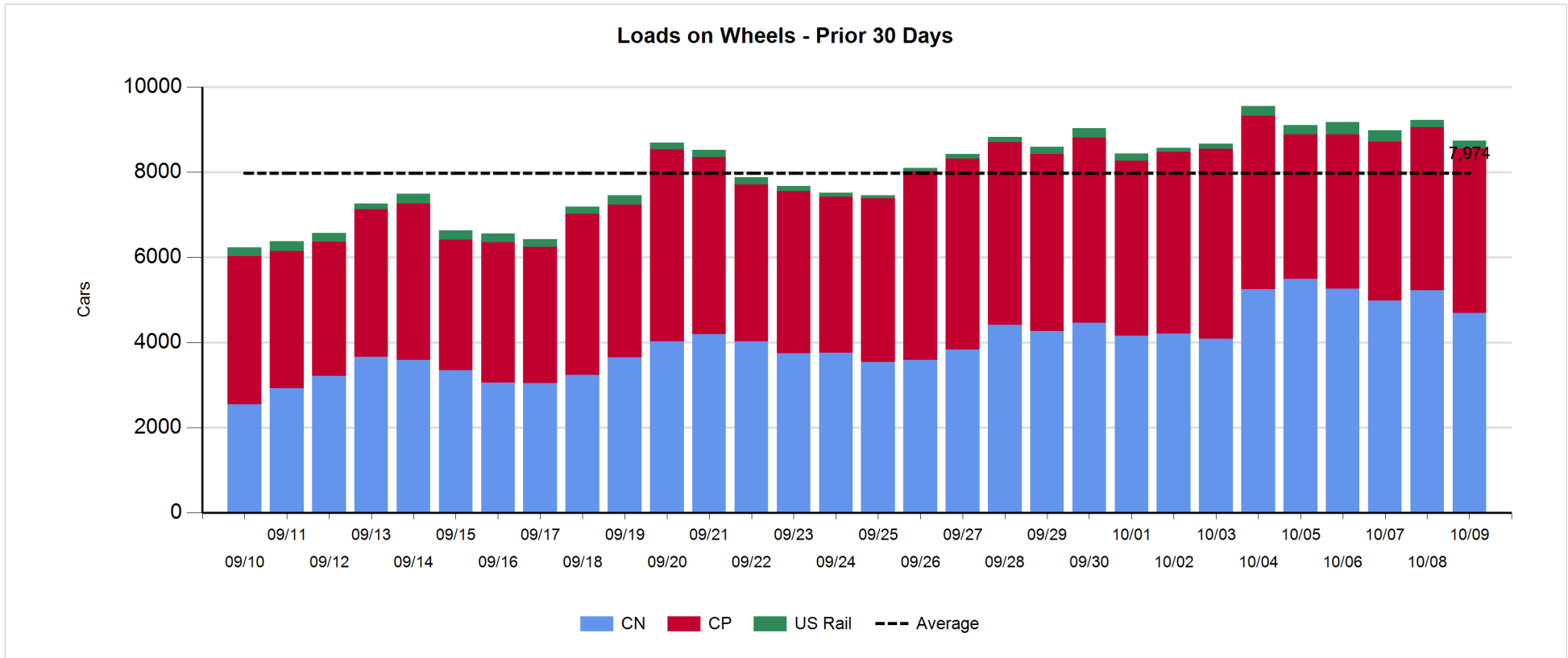
- CN and CP reported a total of 1,383 cars unloaded at the three major ports, 32% above the trailing 30-day average. Three days in Week 10 unloads now behind last week's pace by 150 unloads, marking reduced unloads at Vancouver offset by higher unloads at Prince Rupert and Thunder Bay.
- Vancouver
  - 766 unloads reported by CN and CP at the Port of Vancouver; CN - 357 and CP - 409. Three days in Week 10 unloads are tracking behind last week's performance by more than 300 unloads.
  - There are more than 1,250 cars on site at Vancouver with 750 cars arriving at the port in the last 24 hours.
  - CN and CP have more than 850 cars in British Columbia en route to Vancouver, with 450 cars at Kamloops and west, and 54% of traffic moving on CN.
- Prince Rupert
  - Prince Rupert reported 207 unloads, now ahead of last week's unloads after three days by 100 unloads.
  - Loads on wheels remain above 1,000 cars - currently at 1,505 cars.
  - There are 350 cars west of Jasper en route to Prince Rupert.
  - There are nearly 450 cars on site at Prince Rupert with more than 200 cars arriving at the port in the last 24 hours.
- Thunder Bay
  - 410 unloads were reported at Thunder Bay yesterday. Three days in Week 10 unloads are tracking ahead of last week's pace by about 100 unloads.
  - There are fewer than 700 cars on site at Thunder Bay with more than 250 cars arriving at the port in the prior 24 hours.
  - There are more than 350 cars en route to Thunder Bay from Winnipeg and East.

**Daily Loads on Wheels - 10/9/2019**

	E Canada	Prince Rupert	Thunder Bay	USA/MEX	Vancouver	Total
CN	300	1,505	422	263	2,199	4,689
CP	149		1,123	282	2,308	3,862
Short Line	2				16	18
US Rail				172		172
	451	1,505	1,545	717	4,523	8,741

**Change in Loads on Wheels - Prior 24 Hours**

	E Canada	Prince Rupert	Thunder Bay	USA/MEX	Vancouver	Total
CN	-48	-197	-155	-26	-110	-536
CP	-9		44	20	-15	40
Short Line	0				6	6
US Rail				16		16
	-57	-197	-111	10	-119	-474

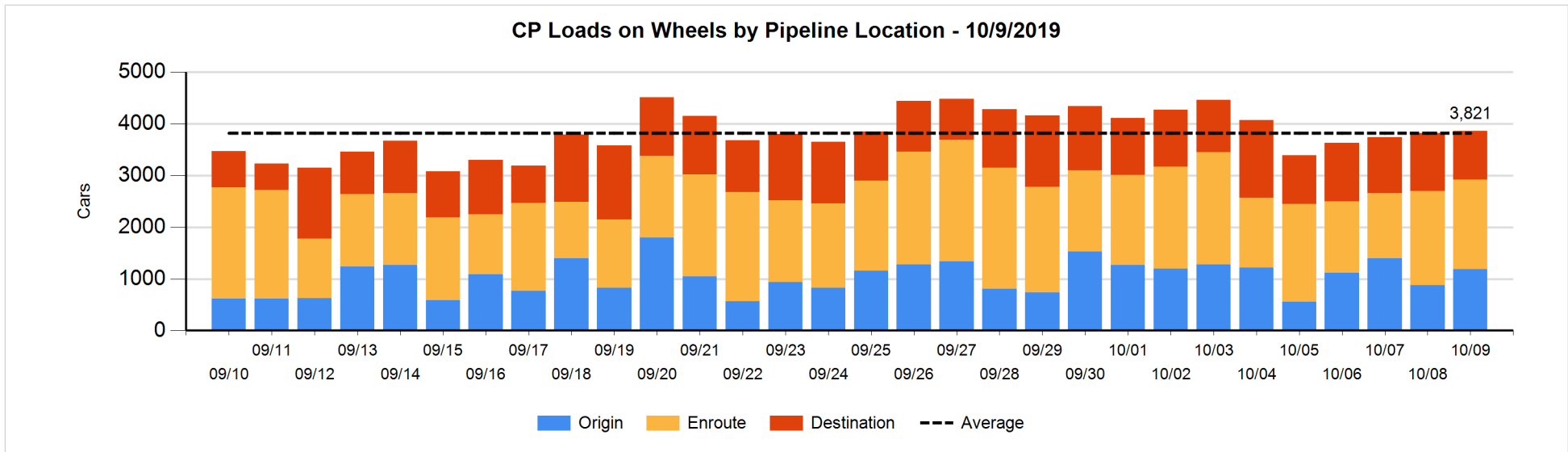
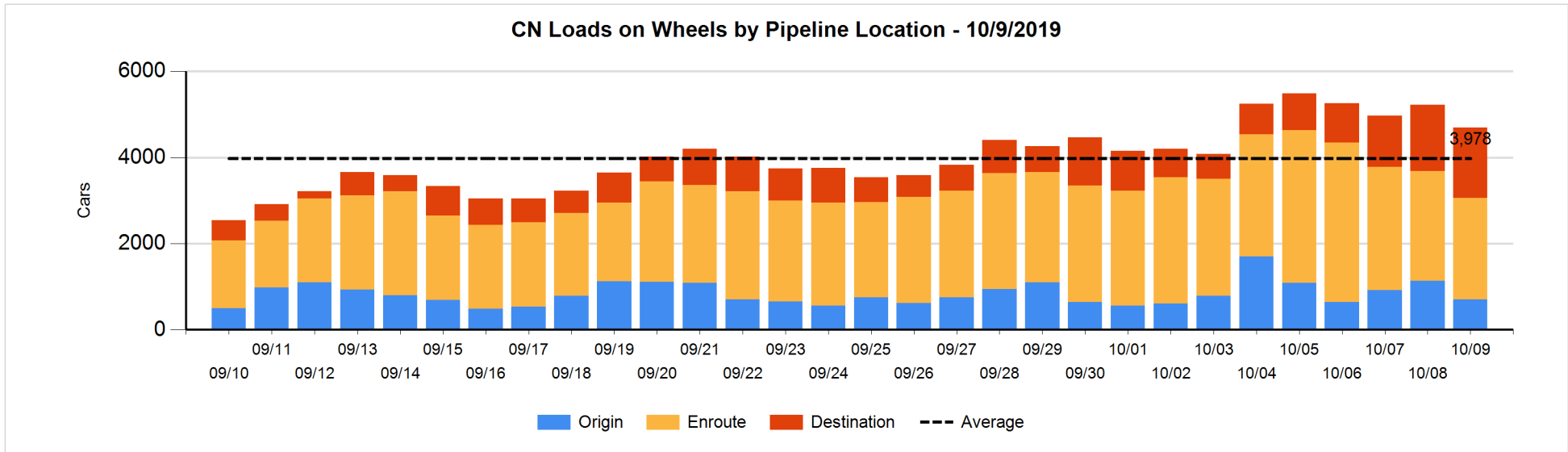


**Daily Loads on Wheels By Pipeline Location - 10/9/2019**

	E Canada	Prince Rupert	Thunder Bay	USA/MEX	Vancouver	Total
CN						
Origin		117	43	115	426	701
Enroute	142	955	22	113	1,131	2,363
Destination	158	433	357	35	642	1,625
	300	1,505	422	263	2,199	4,689
CP						
Origin	72		348	103	659	1,182
Enroute	77		443	179	1,041	1,740
Destination			332		608	940
	149		1,123	282	2,308	3,862
US Rail / Short Line						
Origin						
Enroute				87		87
Destination	2			85	16	103
	2			172	16	190

**Change in Daily Loads on Wheels By Pipeline Location - Prior 24 Hours**

	E Canada	Prince Rupert	Thunder Bay	USA/MEX	Vancouver	Total
CN						
Origin		-324	10	8	-133	-439
Enroute	-91	119	-207	-56	57	-178
Destination	43	8	42	22	-34	81
	-48	-197	-155	-26	-110	-536
CP						
Origin	18		216	1	72	307
Enroute	-26		17	19	-91	-81
Destination	-1		-189		4	-186
	-9		44	20	-15	40
US Rail / Short Line						
Origin						
Enroute				6		6
Destination	0			10	6	16
	0			16	6	22

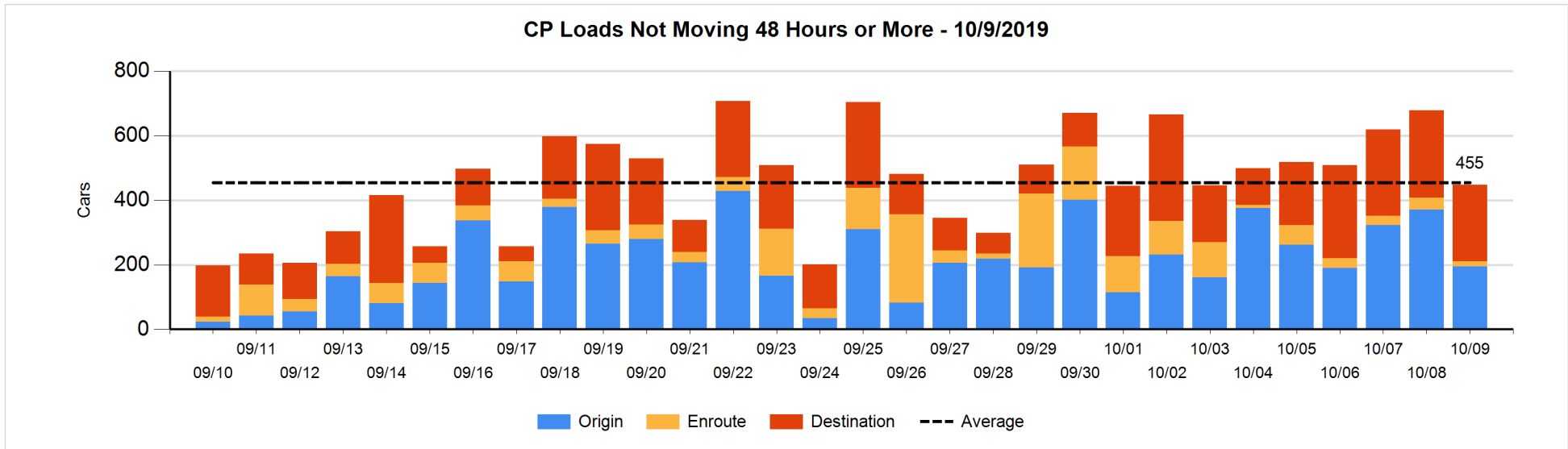
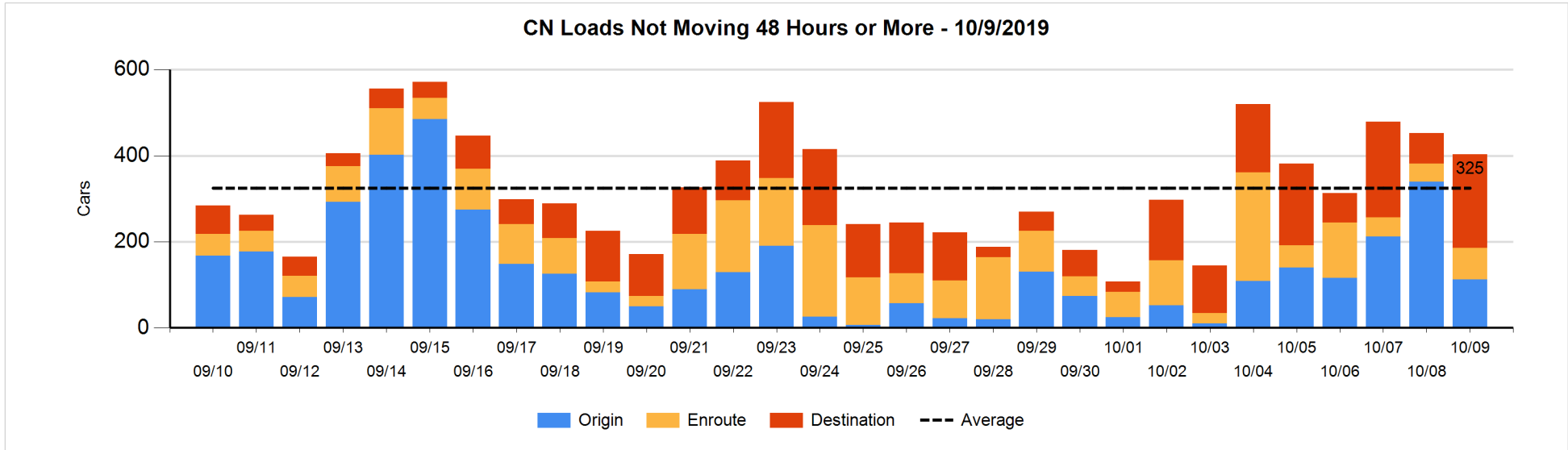


**Loads Not Moving 48 Hours or More - 10/9/2019**

	E Canada	Prince Rupert	Thunder Bay	USA/MEX	Vancouver	Total
CN						
Origin		107	1		4	112
Enroute	5	16	6	6	41	74
Destination	17	118	20	4	58	217
	22	241	27	10	103	403
CP						
Origin	52		58	1	84	195
Enroute	1			2	12	15
Destination			234		4	238
	53		292	3	100	448
US Rail / Short Line						
Origin						
Enroute				9		9
Destination	2			40	7	49
	2			49	7	58

**Change in Loads Not Moving 48 Hours or More - 10/9/2019**

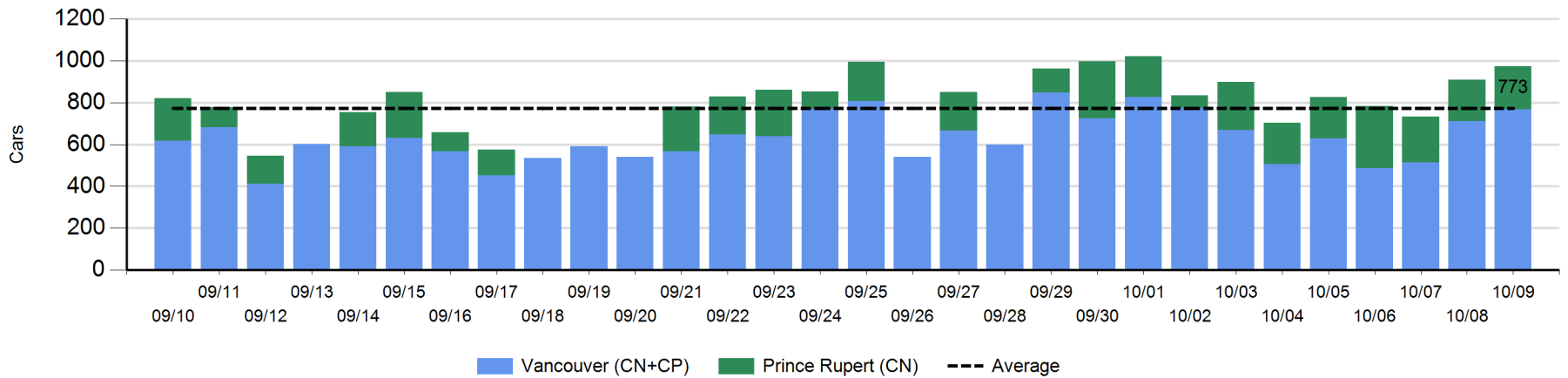
	E Canada	Prince Rupert	Thunder Bay	USA/MEX	Vancouver	Total
CN						
Origin		-229	0		2	-227
Enroute	-7	11	2	3	23	32
Destination	-3	96	-1	0	54	146
	-10	-122	1	3	79	-49
CP						
Origin	-1		-18	0	-157	-176
Enroute	-1		-8	-1	-11	-21
Destination			-35		1	-34
	-2		-61	-1	-167	-231
US Rail / Short Line						
Origin						
Enroute				-26		-26
Destination	2			14	2	18
	2			-12	2	-8



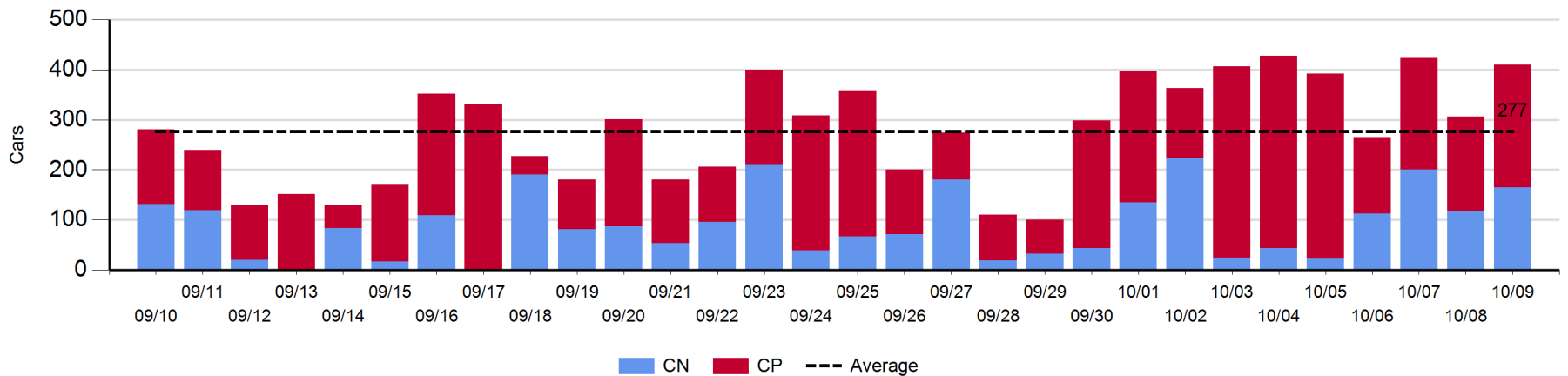
Port Unloads - 10/9/2019

	Prince Rupert	Vancouver	West Coast Total	Thunder Bay	Total
CN	207	357	564	165	729
CP		409	409	245	654
	207	766	973	410	1,383

West Coast Port Unloads - Prior 30 Days



Thunder Bay Port Unloads - Prior 30 Days





**Port Terminal Status**

**Vancouver**

Daily Activity for 10/9/2019

	Cars Arrived	Cars Received in Interchange	Cars Delivered in Interchange	Cars Placed for Unloading	Loads on Wheels at Destination As of 10/9/2019
CN	395	91	7	340	642
CP	349		93	308	608
SRY		9		3	16

**Port Unloads**

	10/09	10/08	Week To Date	Last Week
CN	357	334	882	1,751
CP	409	378	1,110	2,863
SRY	3	20	32	46

**Age Profile of Loaded Cars Waiting Placement for Unloading**

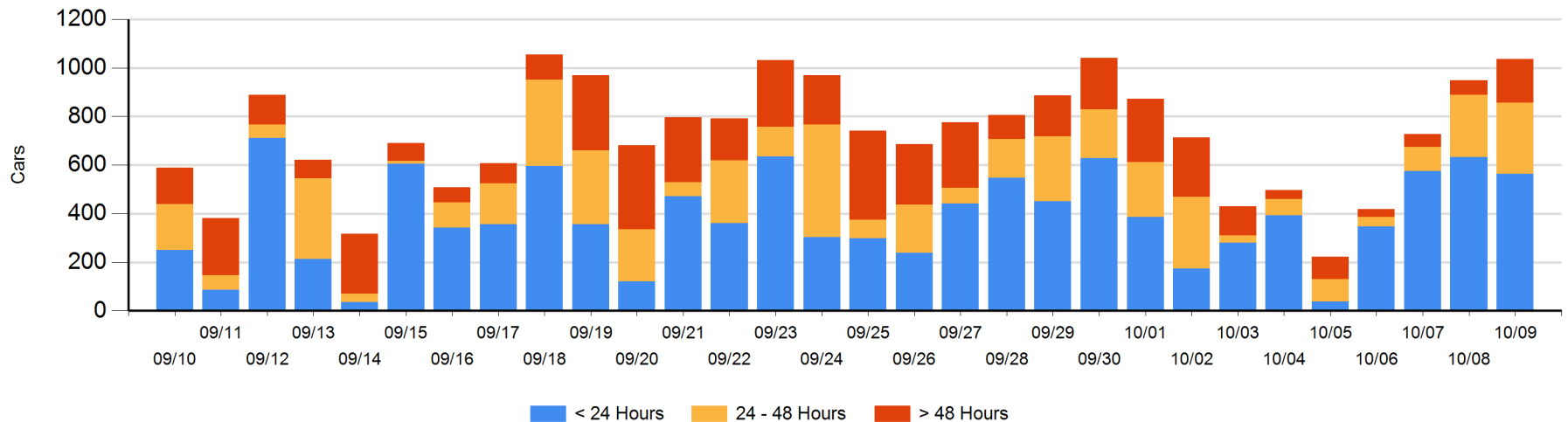
**Today**

	< 24 Hrs	24 - 48 Hrs	> 48-72 Hrs	> 72 Hrs	Total On Hand
CN	214	92	86	16	408
CP	349	201	78	1	629
SRY					0

**Change in Last 24 Hours**

	< 24 Hrs	24-48 Hrs	48 - 72 Hrs	> 72 Hrs
CN	76	3	64	15
CP	-145	33	47	-4
SRY				

**Loaded Cars on Hand Vancouver Waiting for Placement - Last 30 Days All Railways**



**Port Terminal Status**

**Prince Rupert**

Daily Activity for 10/9/2019

	Cars Arrived	Cars Received in Interchange	Cars Delivered in Interchange	Cars Placed for Unloading	Loads on Wheels at Destination As of 10/9/2019
CN	214			214	433

**Port Unloads**

	10/09	10/08	Week To Date	Last Week
CN	207	196	621	1,450

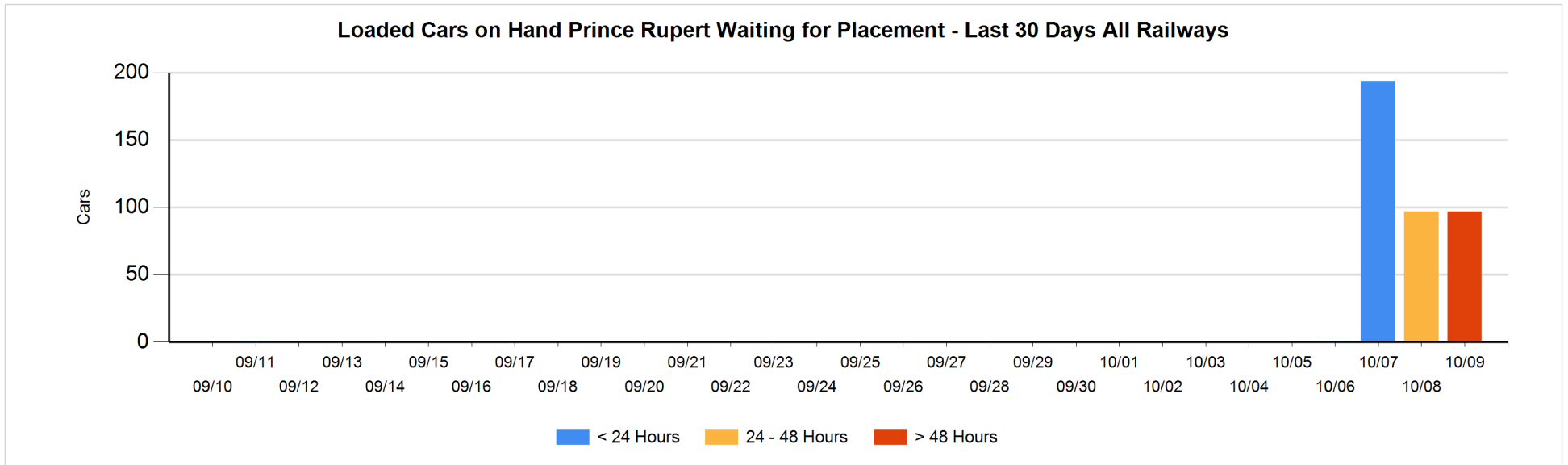
**Age Profile of Loaded Cars Waiting Placement for Unloading**

**Today**

	< 24 Hrs	24 - 48 Hrs	> 48-72 Hrs	> 72 Hrs	Total On Hand
CN			97		97

**Change in Last 24 Hours**

	< 24 Hrs	24-48 Hrs	48 - 72 Hrs	> 72 Hrs
CN		-97	97	



**Port Terminal Status**

**Thunder Bay**

Daily Activity for 10/9/2019

	Cars Arrived	Cars Received in Interchange	Cars Delivered in Interchange	Cars Placed for Unloading	Loads on Wheels at Destination As of 10/9/2019
CN	207			61	357
CP	58			257	332

**Port Unloads**

	10/09	10/08	Week To Date	Last Week
CN	165	118	484	606
CP	245	188	655	1,943

**Age Profile of Loaded Cars Waiting Placement for Unloading**

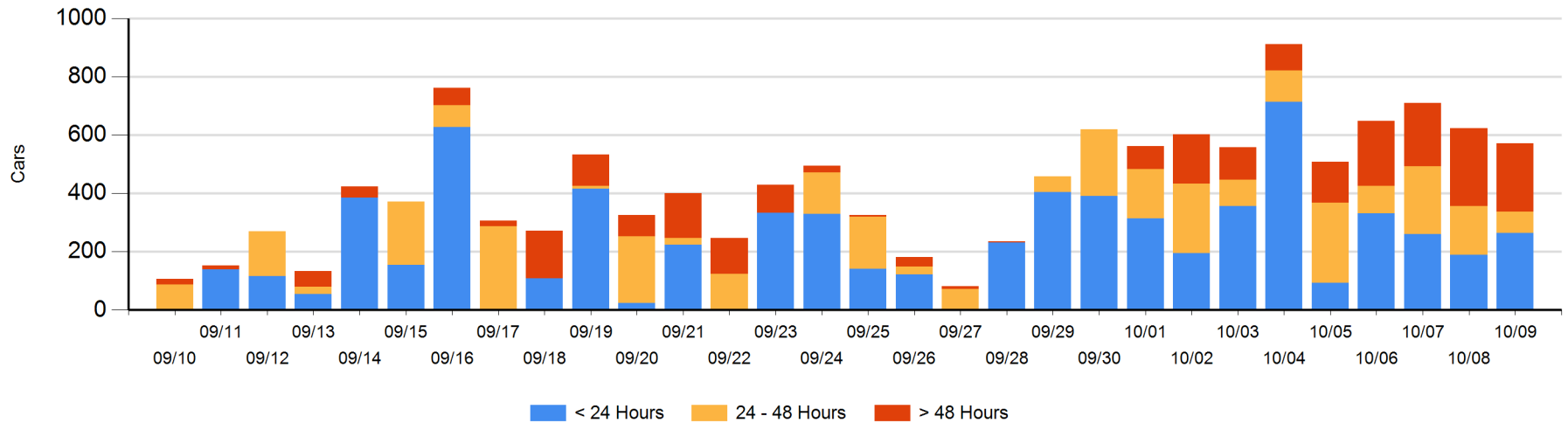
**Today**

	< 24 Hrs	24 - 48 Hrs	> 48-72 Hrs	> 72 Hrs	Total On Hand
CN	207	57			264
CP	57	16	67	167	307

**Change in Last 24 Hours**

	< 24 Hrs	24-48 Hrs	48 - 72 Hrs	> 72 Hrs
CN	89	57		
CP	-14	-151	-49	15

**Loaded Cars on Hand Thunder Bay Waiting for Placement - Last 30 Days All Railways**



## Measurement Definitions

Loads on Wheels	<p>Count of loaded rail cars including all rail cars that have been released loaded at origin and have not been reported by the railway as unloaded at destination.</p> <p>Counts include all rail cars (hopper cars and boxcars) moving within a pipeline.</p>
Loads Not Moving	<p>Loaded rail cars for which the railways have not reported a movement event for 48 hours or more whether the rail car is at origin, enroute or at destination.</p>
Port Unloads	<p>Count of rail cars reported by railways as unloaded at the western port destinations of Vancouver, Prince Rupert and Thunder Bay.</p> <p>Unload counts include all rail cars (hopper cars and boxcars) unloaded by all receivers including major port terminals, transloaders and other receivers.</p>
Cars Arrived	<p>Count of rail cars reported as arrived at the destination railway terminal.</p>
Cars Received in Interchange	<p>Count of rail cars received in interchange by each railway within a destination railway terminal. Interchange activity is tracked for the Vancouver and Thunder Bay pipelines as applicable.</p>
Cars Delivered in Interchange	<p>Count of rail cars delivered in interchange by each railway within a destination railway terminal. Interchange activity is tracked for the Vancouver and Thunder Bay pipelines as applicable.</p>
Cars Placed for Unloading	<p>Count of rail cars reported by the railways as placed loaded at the receiver's facility for unloading.</p>
Loads on Wheels at Destination	<p>Count of rail cars that remain under load within the destination railway terminal including rail cars that have been reported as placed for unloading but not yet reported as unloaded.</p>
Waiting Placement for Unloading	<p>Count of rail cars that have been reported as arrived at the destination railway terminal but not reported as placed for unloading by the railway.</p> <p>For the Ports of Vancouver, Prince Rupert and Thunder Bay the count of rail cars waiting placement for unloading is categorized by age – i.e. the elapsed time from arrival at destination to the current report date.</p>