

SPEED READ

- Loads on wheels gained slightly overnight, marking higher CP traffic offset by a decline in CN volumes. On a net basis, volumes increased due to higher traffic in the Thunder Bay, E. Canada and Prince Rupert corridors offset by lower traffic in the USA/MEX and Vancouver corridors.
- Network fluidity deteriorated overnight, led by a rise in idle car counts on CN by 57% (+229) offset by a decline in idle car counts on CP by 29% (-132). The total count of cars for 4+ days on both railways decreased 27% (-73) overnight - presently at 201 cars.
- Four days in Week 10 unloads now behind prior week's performance by 150 unloads, marking lower unloads at Vancouver offset by improved week over week performance at Prince Rupert and Thunder Bay.

=====

Loads on Wheels

- Loads on wheels gained slightly by (+22) overnight, due to higher traffic on CP offset by lower traffic on CN - combined total at 8,765 and 9% above the trailing 30-day average.
- On a net basis, the rise in loads on wheels reflects higher traffic in the Thunder Bay, E. Canada and Prince Rupert corridors offset by lower traffic in the USA/MEX and Vancouver corridors.
- CN volumes declined slightly by 1% (-67) overnight, with reduced volumes in the Vancouver and USA/MEX corridors offset by higher volumes in the Thunder Bay, E. Canada and Prince Rupert corridors. System wide CN loads on wheels now at 4,624 and 14% above the trailing 30-day average.
- CP volumes increased for the fifth consecutive day, up 3% (+129) overnight, driven by a rise in traffic in the Vancouver and E. Canada corridors offset by a decline in traffic in the USA/MEX and Thunder Bay corridors. CP system wide loads on wheels presently at 3,991 and 4% above the trailing 30-day average.
- Vancouver presently at 4,479, declined slightly by 1% (-45) overnight, now 3% above the trailing 30-day average.
- The Prince Rupert pipeline presently at 1,516, gained slightly by 1% (+10) overnight, and 35% above the trailing 30-day average.
- Thunder Bay volumes increased 6% (+92) overnight - presently at 1,637 and 9% above the trailing 30-day average, with 67% of traffic moving on CP.

Hopper Car Rationing

- No hopper cars were rationed by either CN or CP in week 9.

Loads Not Moving

- **The count of cars not moving for 48+ hours increased 11% (+97) overnight, marking higher counts on CN offset by lower counts on CP. Idle car counts now at 948 and 19% above the trailing 30-day average.**
- CN
 - **The count of idle cars for 48+ hours gained 57% (+229) overnight - currently at 632 cars, the highest seen in the last 30 days.**
 - The number of cars idle for 4+ days decreased 67% (-126) overnight - presently at 63 cars.
 - The count of cars not moving for 7+ days increased 3% (+1) overnight - now at 33 cars.
 - Vancouver represents 33% of all idle cars.
 - In total 2% of all idle cars are dwelling at origin locations.
- CP
 - **CP idle car counts for 48+ hours decreased 29% (-132) overnight - currently at 316 cars.**
 - The number of cars idle for 4+ days gained 62% (+53) overnight - presently at 138 cars.

- The number of cars idle for 7+ days decreased 53% (-26) overnight - presently at 23 cars.
- Vancouver accounts for 43% of all idle cars.
- In total 51% of all idle cars are dwelling at origin locations.

Port Performance

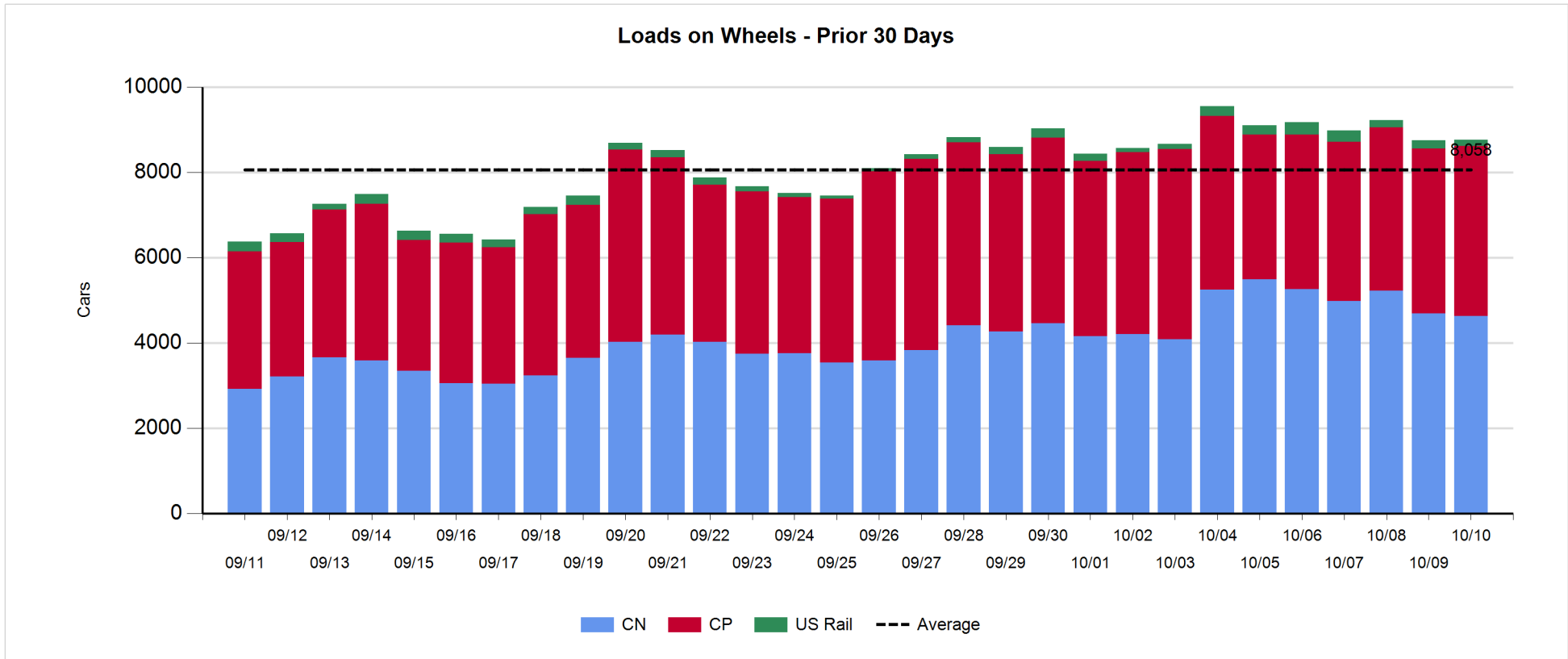
- CN and CP reported a total of 1,312 cars unloaded at the three major ports, 24% above the trailing 30-day average. Four days in Week 10 unloads now behind last week's pace by 150 unloads, marking lower unloads at Vancouver offset by higher unloads at Prince Rupert and Thunder Bay.
- Vancouver
 - 694 unloads reported by CN and CP at the Port of Vancouver; CN - 307 and CP - 387. Four days in Week 10 unloads are tracking behind last week's performance by more than 300 unloads.
 - There are 1,250 cars on site at Vancouver with more than 650 cars arriving at the port in the last 24 hours.
 - CN and CP have more than 1,000 cars in British Columbia en route to Vancouver, with around 350 cars at Kamloops and west, and 72% of traffic moving on CP.
- Prince Rupert
 - Prince Rupert reported 219 unloads, now ahead of last week's unloads after four days by around 100 unloads.
 - Loads on wheels remain above 1,000 cars - presently at 1,516 cars.
 - There are more than 400 cars west of Jasper en route to Prince Rupert.
 - There are more than 350 cars on site at Prince Rupert with around 150 cars arriving at the port in the last 24 hours.
- Thunder Bay
 - 399 unloads were reported at Thunder Bay yesterday. Four days in Week 10 unloads are tracking ahead of last week's pace by more than 50 unloads.
 - There are more than 600 cars on site at Thunder Bay with around 350 cars arriving at the port in the prior 24 hours.
 - There are more than 150 cars en route to Thunder Bay from Winnipeg and east.

Daily Loads on Wheels - 10/10/2019

	E Canada	Prince Rupert	Thunder Bay	USA/MEX	Vancouver	Total
CN	361	1,516	535	236	1,976	4,624
CP	157		1,102	243	2,489	3,991
Short Line	1				14	15
US Rail				135		135
	519	1,516	1,637	614	4,479	8,765

Change in Loads on Wheels - Prior 24 Hours

	E Canada	Prince Rupert	Thunder Bay	USA/MEX	Vancouver	Total
CN	61	10	113	-27	-224	-67
CP	8		-21	-39	181	129
Short Line	-1				-2	-3
US Rail				-37		-37
	68	10	92	-103	-45	22

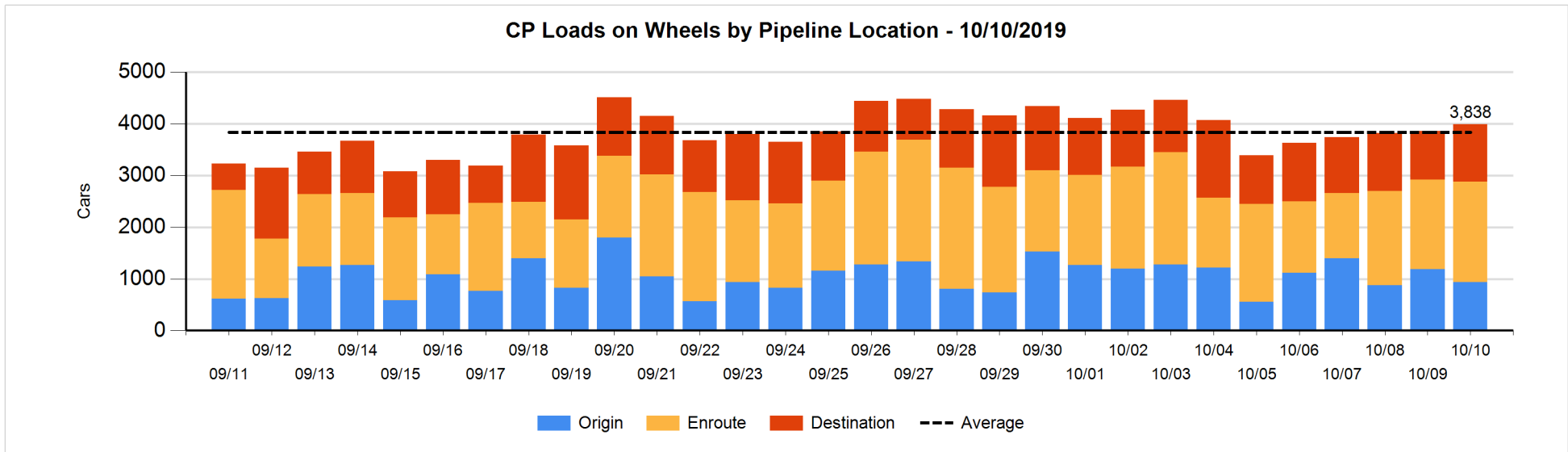
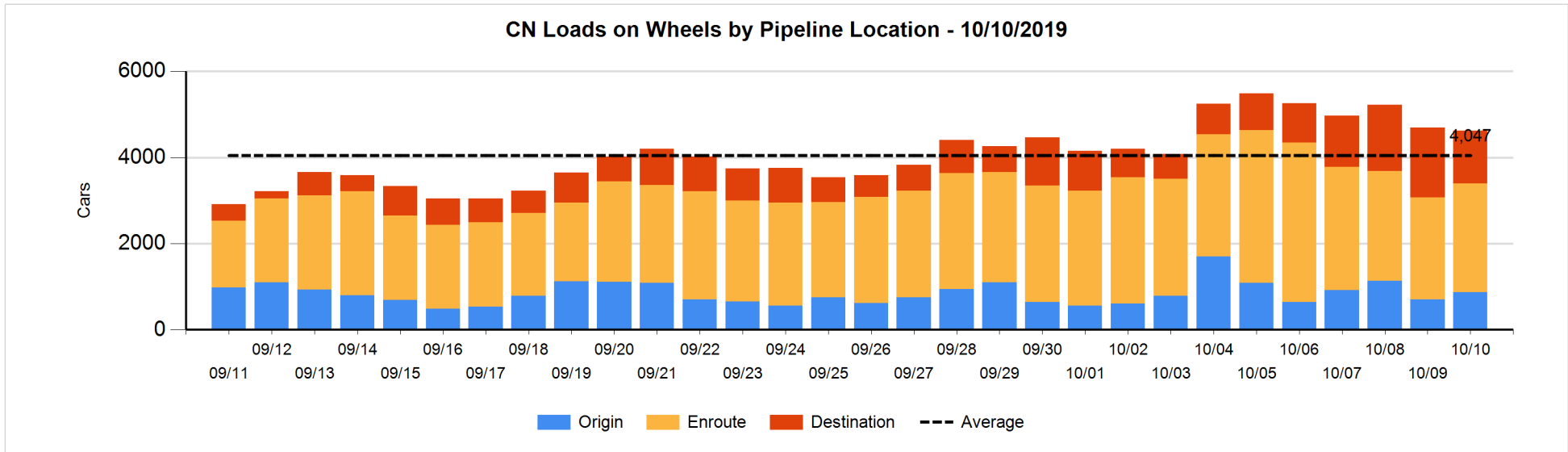


Daily Loads on Wheels By Pipeline Location - 10/10/2019

	E Canada	Prince Rupert	Thunder Bay	USA/MEX	Vancouver	Total
CN						
Origin	115	214	305	16	216	866
Enroute	131	937	70	212	1,183	2,533
Destination	115	365	160	8	577	1,225
	361	1,516	535	236	1,976	4,624
CP						
Origin	8		247	2	677	934
Enroute	149		390	241	1,162	1,942
Destination			465		650	1,115
	157		1,102	243	2,489	3,991
US Rail / Short Line						
Origin						
Enroute				40		40
Destination	1			95	14	110
	1			135	14	150

Change in Daily Loads on Wheels By Pipeline Location - Prior 24 Hours

	E Canada	Prince Rupert	Thunder Bay	USA/MEX	Vancouver	Total
CN						
Origin	115	96	262	-99	-211	163
Enroute	-11	-18	48	99	52	170
Destination	-43	-68	-197	-27	-65	-400
	61	10	113	-27	-224	-67
CP						
Origin	-64		-101	-101	18	-248
Enroute	72		-53	62	121	202
Destination			133		42	175
	8		-21	-39	181	129
US Rail / Short Line						
Origin						
Enroute				-47		-47
Destination	-1			10	-2	7
	-1			-37	-2	-40

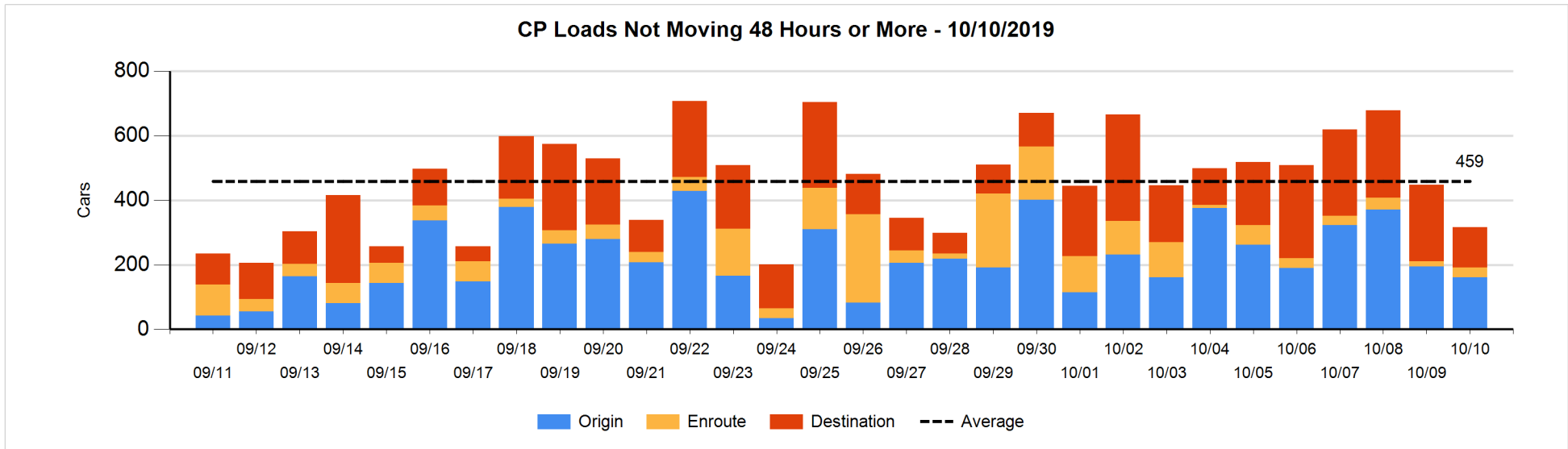
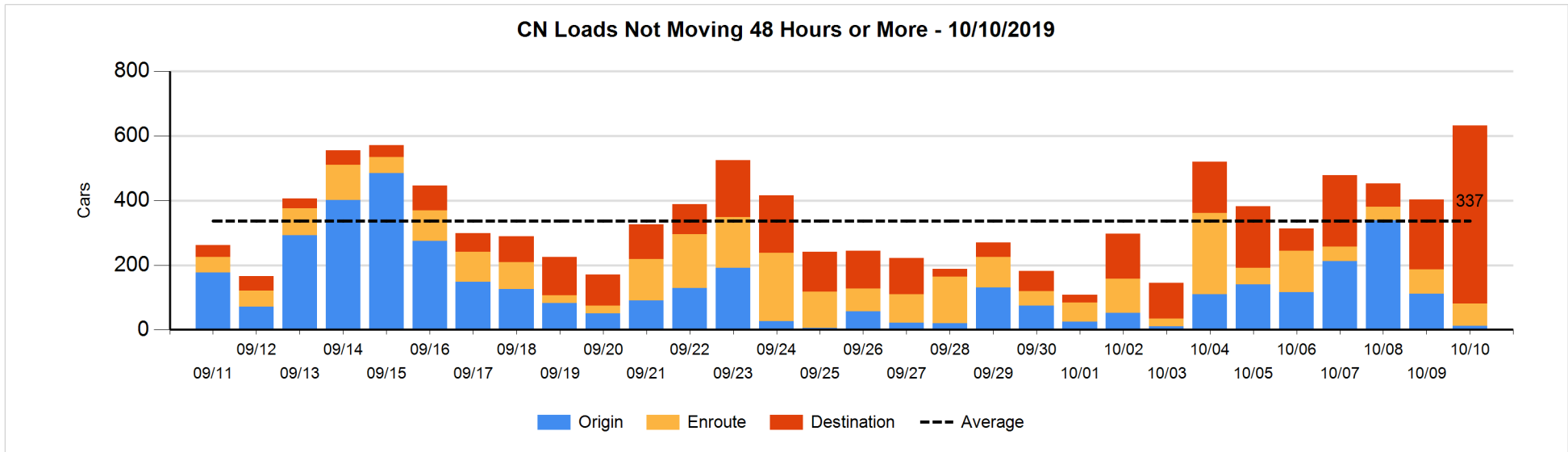


Loads Not Moving 48 Hours or More - 10/10/2019

	E Canada	Prince Rupert	Thunder Bay	USA/MEX	Vancouver	Total
CN						
Origin				8	4	12
Enroute	14	4	6	4	41	69
Destination	97	247	41	4	162	551
	111	251	47	16	207	632
CP						
Origin	1		54		106	161
Enroute	20			2	8	30
Destination			102		23	125
	21		156	2	137	316
US Rail / Short Line						
Origin						
Enroute				8		8
Destination	1			32	7	40
	1			40	7	48

Change in Loads Not Moving 48 Hours or More - 10/10/2019

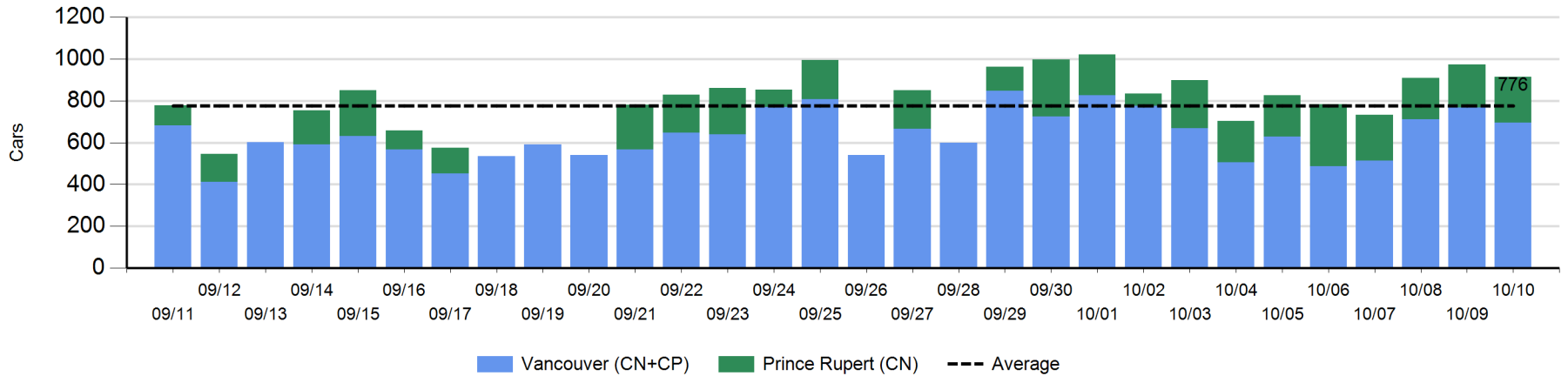
	E Canada	Prince Rupert	Thunder Bay	USA/MEX	Vancouver	Total
CN						
Origin		-107	-1	8	0	-100
Enroute	9	-12	0	-2	0	-5
Destination	80	129	21	0	104	334
	89	10	20	6	104	229
CP						
Origin	-51		-4	-1	22	-34
Enroute	19			0	-4	15
Destination			-132		19	-113
	-32		-136	-1	37	-132
US Rail / Short Line						
Origin						
Enroute				-1		-1
Destination	-1			-8	0	-9
	-1			-9	0	-10



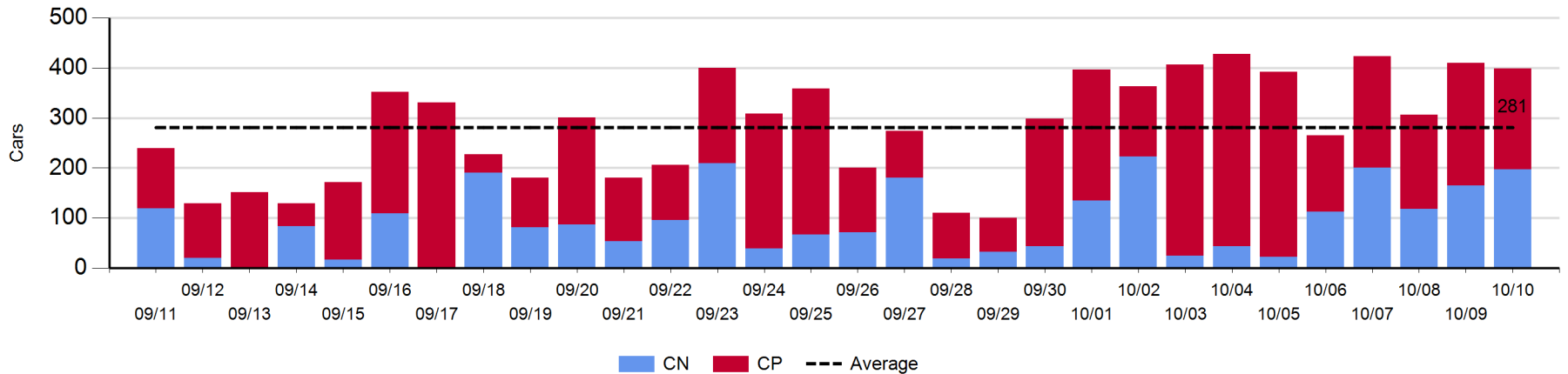
Port Unloads - 10/10/2019

	Prince Rupert	Vancouver	West Coast Total	Thunder Bay	Total
CN	219	307	526	197	723
CP		387	387	202	589
	219	694	913	399	1,312

West Coast Port Unloads - Prior 30 Days



Thunder Bay Port Unloads - Prior 30 Days



Port Terminal Status

Vancouver

Daily Activity for 10/10/2019

	Cars Arrived	Cars Received in Interchange	Cars Delivered in Interchange	Cars Placed for Unloading	Loads on Wheels at Destination As of 10/10/2019
CN	439	5	201	349	577
CP	234	201	5	443	650
SRY				2	14

Port Unloads

	10/10	10/09	Week To Date	Last Week
CN	307	357	1,189	1,751
CP	387	409	1,497	2,863
SRY	2	3	34	46

Age Profile of Loaded Cars Waiting Placement for Unloading

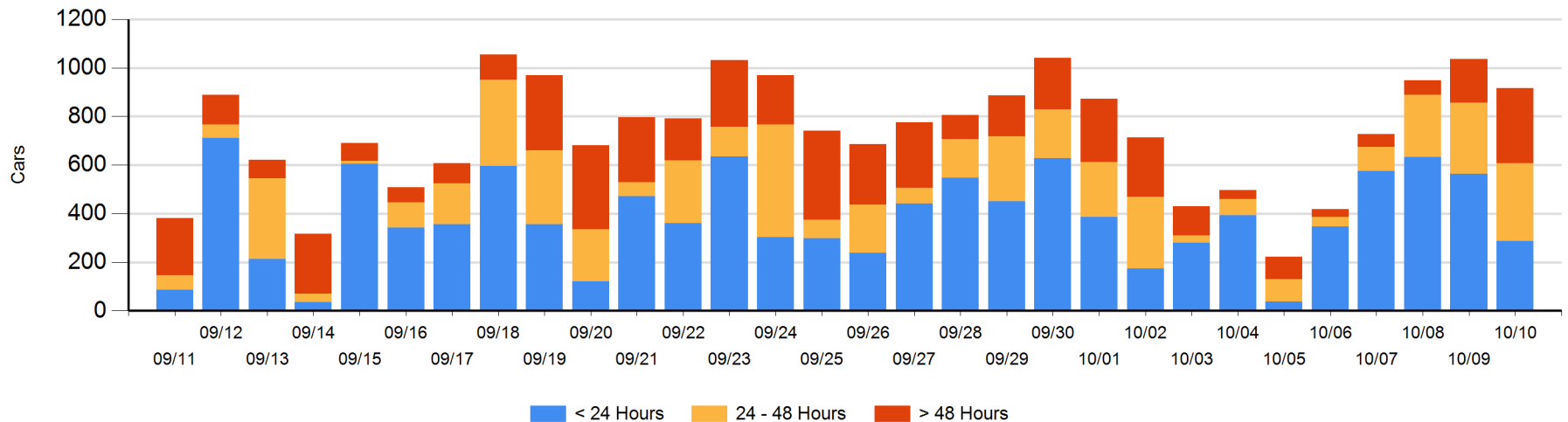
Today

	< 24 Hrs	24 - 48 Hrs	> 48-72 Hrs	> 72 Hrs	Total On Hand
CN	227	100	58	95	480
CP	59	222	79	76	436
SRY					0

Change in Last 24 Hours

	< 24 Hrs	24-48 Hrs	48 - 72 Hrs	> 72 Hrs
CN	13	8	-28	79
CP	-290	21	1	75
SRY				

Loaded Cars on Hand Vancouver Waiting for Placement - Last 30 Days All Railways



Port Terminal Status

Prince Rupert

Daily Activity for 10/10/2019

	Cars Arrived	Cars Received in Interchange	Cars Delivered in Interchange	Cars Placed for Unloading	Loads on Wheels at Destination As of 10/10/2019
CN	136			136	365

Port Unloads

	10/10	10/09	Week To Date	Last Week
CN	219	207	840	1,450

Age Profile of Loaded Cars Waiting Placement for Unloading

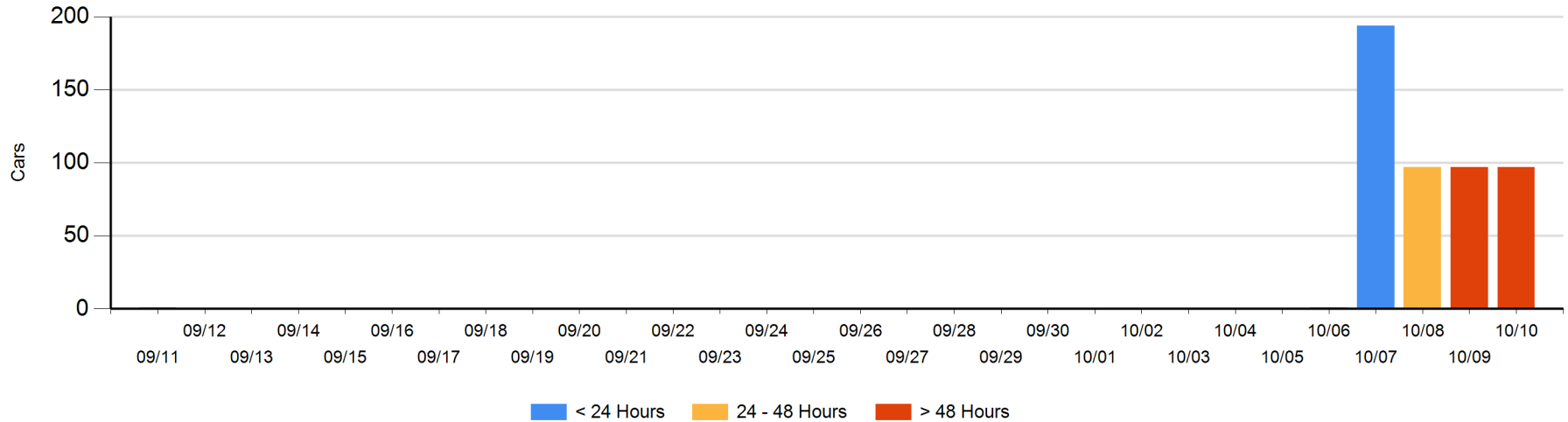
Today

	< 24 Hrs	24 - 48 Hrs	> 48-72 Hrs	> 72 Hrs	Total On Hand
CN				97	97

Change in Last 24 Hours

	< 24 Hrs	24-48 Hrs	48 - 72 Hrs	> 72 Hrs
CN			-97	97

Loaded Cars on Hand Prince Rupert Waiting for Placement - Last 30 Days All Railways



Port Terminal Status

Thunder Bay

Daily Activity for 10/10/2019

	Cars Arrived	Cars Received in Interchange	Cars Delivered in Interchange	Cars Placed for Unloading	Loads on Wheels at Destination As of 10/10/2019
CN				205	160
CP	335			198	465

Port Unloads

	10/10	10/09	Week To Date	Last Week
CN	197	165	681	606
CP	202	245	857	1,943

Age Profile of Loaded Cars Waiting Placement for Unloading

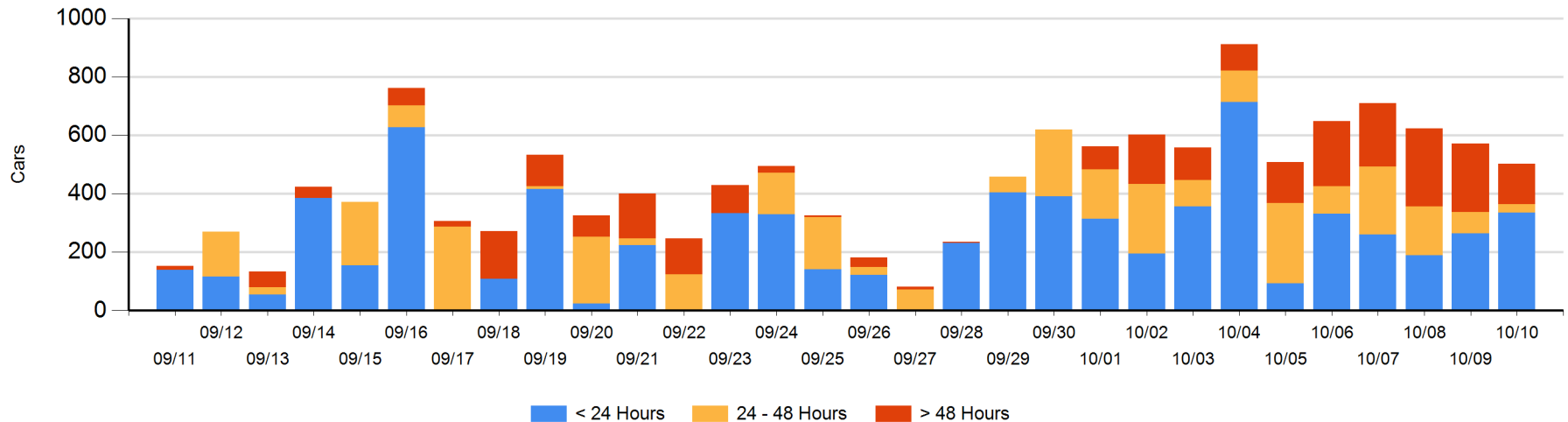
Today

	< 24 Hrs	24 - 48 Hrs	> 48-72 Hrs	> 72 Hrs	Total On Hand
CN		22	37		59
CP	335	7	16	86	444

Change in Last 24 Hours

	< 24 Hrs	24-48 Hrs	48 - 72 Hrs	> 72 Hrs
CN	-207	-35	37	
CP	278	-9	-51	-81

Loaded Cars on Hand Thunder Bay Waiting for Placement - Last 30 Days All Railways



Measurement Definitions

Loads on Wheels	<p>Count of loaded rail cars including all rail cars that have been released loaded at origin and have not been reported by the railway as unloaded at destination.</p> <p>Counts include all rail cars (hopper cars and boxcars) moving within a pipeline.</p>
Loads Not Moving	<p>Loaded rail cars for which the railways have not reported a movement event for 48 hours or more whether the rail car is at origin, enroute or at destination.</p>
Port Unloads	<p>Count of rail cars reported by railways as unloaded at the western port destinations of Vancouver, Prince Rupert and Thunder Bay.</p> <p>Unload counts include all rail cars (hopper cars and boxcars) unloaded by all receivers including major port terminals, transloaders and other receivers.</p>
Cars Arrived	<p>Count of rail cars reported as arrived at the destination railway terminal.</p>
Cars Received in Interchange	<p>Count of rail cars received in interchange by each railway within a destination railway terminal. Interchange activity is tracked for the Vancouver and Thunder Bay pipelines as applicable.</p>
Cars Delivered in Interchange	<p>Count of rail cars delivered in interchange by each railway within a destination railway terminal. Interchange activity is tracked for the Vancouver and Thunder Bay pipelines as applicable.</p>
Cars Placed for Unloading	<p>Count of rail cars reported by the railways as placed loaded at the receiver's facility for unloading.</p>
Loads on Wheels at Destination	<p>Count of rail cars that remain under load within the destination railway terminal including rail cars that have been reported as placed for unloading but not yet reported as unloaded.</p>
Waiting Placement for Unloading	<p>Count of rail cars that have been reported as arrived at the destination railway terminal but not reported as placed for unloading by the railway.</p> <p>For the Ports of Vancouver, Prince Rupert and Thunder Bay the count of rail cars waiting placement for unloading is categorized by age – i.e. the elapsed time from arrival at destination to the current report date.</p>