

**SPEED READ**

- Loads on wheels decreased marginally overnight, reflecting a decline in both CN and CP volumes. On a net basis, volumes fell due to lower volumes across all corridors other than Vancouver.
- Network fluidity deteriorated overnight, led by a rise in idle car counts on CN by 82% (+499) offset by a decline in idle car counts on CP by 11% (-80).
- The number of cars delayed on CN has nearly tripled in the last three days and is now above 1,100 with more than half of those cars dwelling at origin. The number of idle cars on CN has increased across all corridors over the last 48 hours - 50% of all idle cars are destined to Prince Rupert.
- The total count of cars for 4+ days on both railways decreased 27% (-99) overnight - presently at 268 cars.
- One day in Week 11 unloads now ahead of prior week's performance by around 300 unloads, reflecting improved week over week performance at Vancouver and Prince Rupert offset by lower unloads at Thunder Bay.

=====

**Loads on Wheels**

- Loads on wheels decreased marginally by 1% (-112) overnight, due to lower traffic on both CN and CP - combined total at 9,811 and 16% above the trailing 30-day average.
- On a net basis, the decline in loads on wheels reflects lower volumes across all corridors other than Vancouver.
- CN volumes decreased marginally by 1% (-70) overnight, with reduced traffic in the Prince Rupert, Thunder Bay and USA/MEX corridors offset by higher traffic in the E. Canada and Vancouver corridors. System wide CN loads on wheels presently at 5,266 and 23% above the trailing 30-day average.
- CP volumes decreased marginally by 1% (-64) overnight, driven by a decline in volumes across all corridors other than Vancouver. CP system wide loads on wheels now at 4,375 and 9% above the trailing 30-day average.
- Vancouver now at 5,353, the highest seen in the last 30 days, rose marginally by 1% (+68) overnight, now 19% above the trailing 30-day average.
- The Prince Rupert pipeline presently at 1,590, decreased 4% (-60) overnight, and 28% above the trailing 30-day average.
- Thunder Bay volumes decreased 4% (-73) overnight - now at 1,872 and 17% above the trailing 30-day average, with 72% of traffic moving on CP.

**Hopper Car Rationing**

- No hopper cars were rationed by either CN or CP in week 9.

**Loads Not Moving**

- **The count of cars not moving for 48+ hours increased for the third consecutive day, up 32% (+419) overnight, reflecting higher counts on CN offset by lower counts on CP. Idle car counts now at 1,734, the highest seen in the last 30 days, and 101% above the trailing 30-day average.**
- CN
  - **The count of idle cars for 48+ hours increased significantly by 82% (+499) overnight - presently at 1,110 cars, the highest seen in the last 30 days.**
  - The number of cars idle for 4+ days fell 43% (-117) overnight - now at 157 cars.
  - The count of cars not moving for 7+ days rose 341% (+92) overnight - now at 119 cars, the highest seen in the last 30 days.
  - Vancouver represents 14% of all idle cars.
  - In total 60% of all idle cars are dwelling at origin locations.
- CP
  - **CP idle car counts for 48+ hours decreased 11% (-80) overnight - now at 624 cars.**
  - The number of cars idle for 4+ days increased 19% (+18) overnight - now at 111 cars.

- The number of cars idle for 7+ days increased 700% (+56) overnight - presently at 64 cars.
- Vancouver accounts for 59% of all idle cars.
- In total 80% of all idle cars are dwelling at origin locations.

### **Port Performance**

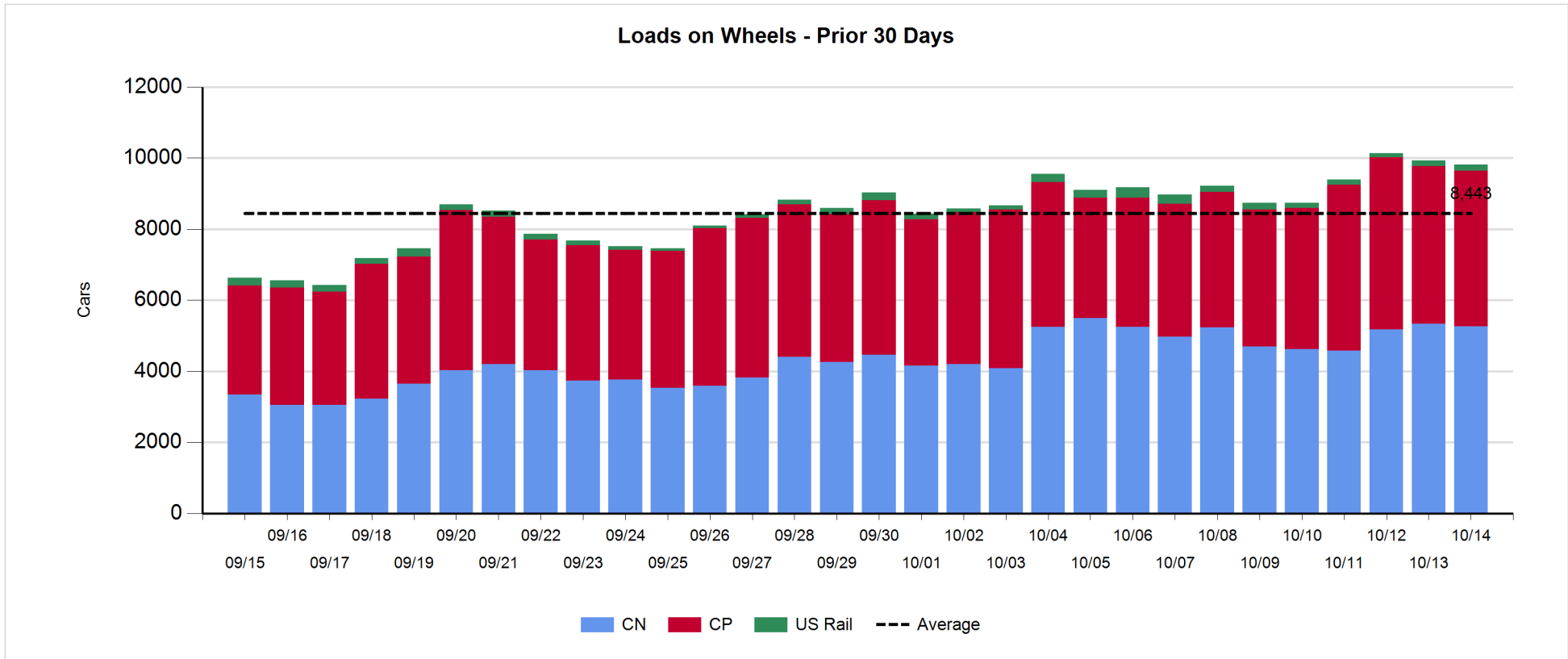
- CN and CP reported a total of 1,450 cars unloaded at the three major ports, 30% above the trailing 30-day average. One day in Week 11 unloads ahead of last week's pace by around 300 unloads, reflecting higher unloads at Vancouver and Prince Rupert offset by lower unloads at Thunder Bay.
- Vancouver
  - 792 unloads reported by CN and CP at the Port of Vancouver; CN - 322 and CP - 470. One day in Week 11 unloads are tracking ahead of last week's performance by more than 250 unloads.
  - There are 1,200 cars on site at Vancouver with 1,000 cars arriving at the port in the last 24 hours.
  - CN and CP have 900 cars in British Columbia en route to Vancouver, with 550 cars at Kamloops and west, and 61% of traffic moving on CP.
- Prince Rupert
  - Prince Rupert reported 258 unloads, now ahead of last week's unloads after one day by 50 unloads.
  - Loads on wheels remain above 1,000 cars - presently at 1,590 cars.
  - There are about 400 cars west of Jasper en route to Prince Rupert.
  - There are more than 200 cars on site at Prince Rupert with more than 50 cars arriving at the port in the last 24 hours.
- Thunder Bay
  - 400 unloads were reported at Thunder Bay yesterday. One day in Week 11 unloads are tracking behind last week's pace by fewer than 50 unloads.
  - There are more than 300 cars on site at Thunder Bay with more than 200 cars arriving at the port in the prior 24 hours.
  - There are 500 cars en route to Thunder Bay from Winnipeg and east.

**Daily Loads on Wheels - 10/14/2019**

	E Canada	Prince Rupert	Thunder Bay	USA/MEX	Vancouver	Total
CN	460	1,590	523	236	2,457	5,266
CP	18		1,349	123	2,885	4,375
Short Line	1				11	12
US Rail				158		158
	479	1,590	1,872	517	5,353	9,811

**Change in Loads on Wheels - Prior 24 Hours**

	E Canada	Prince Rupert	Thunder Bay	USA/MEX	Vancouver	Total
CN	52	-60	-37	-26	1	-70
CP	-53		-36	-43	68	-64
Short Line	0				-1	-1
US Rail				23		23
	-1	-60	-73	-46	68	-112

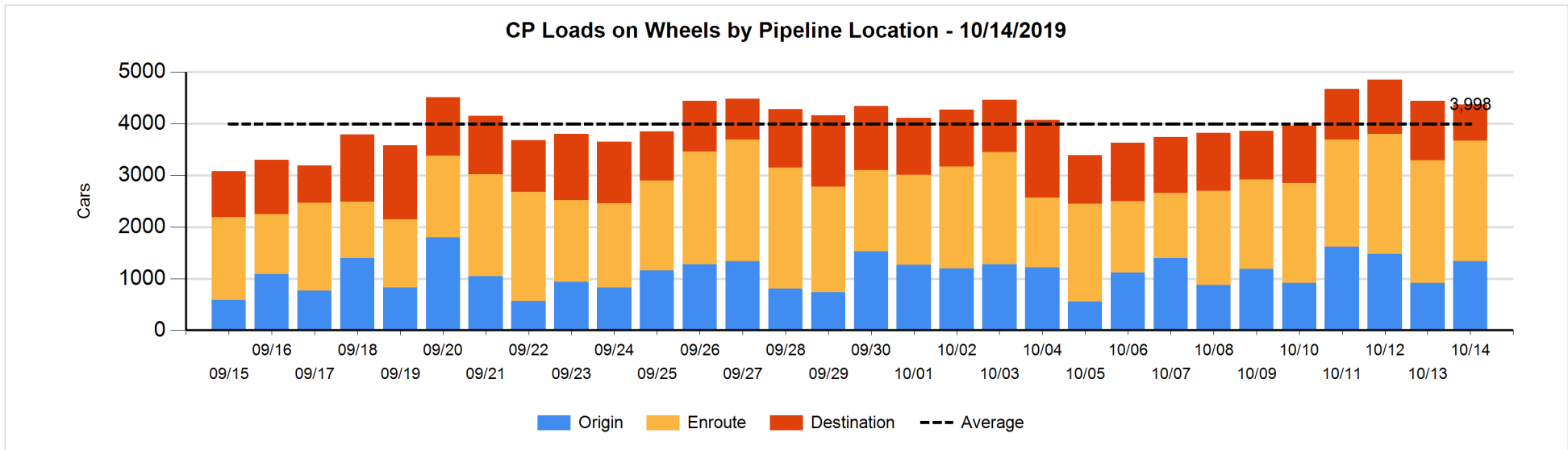
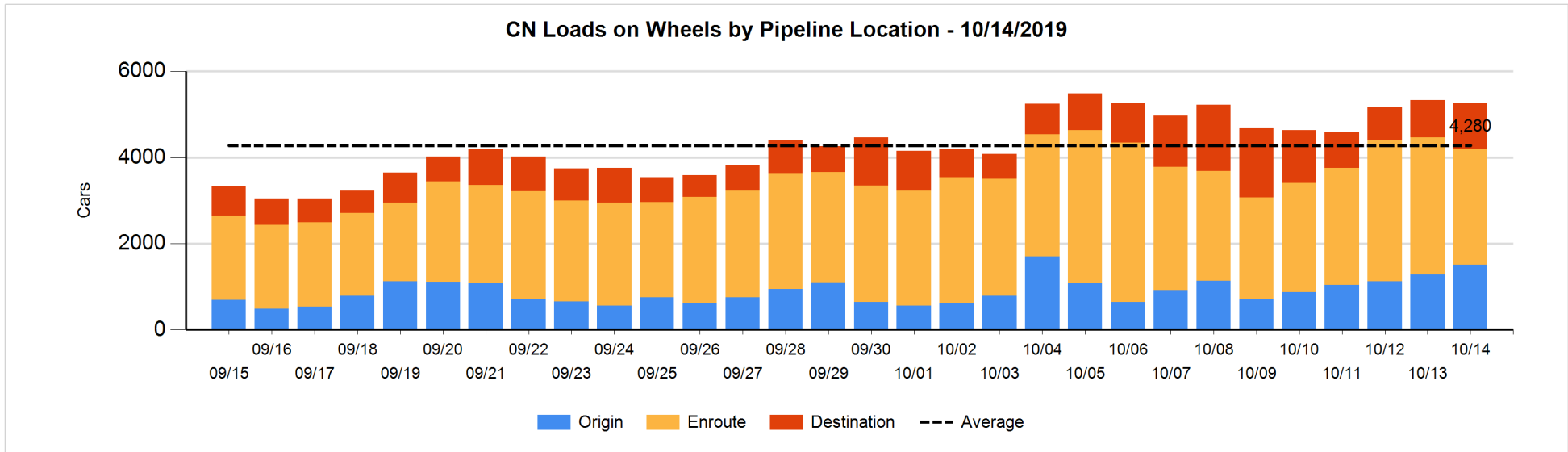


**Daily Loads on Wheels By Pipeline Location - 10/14/2019**

	E Canada	Prince Rupert	Thunder Bay	USA/MEX	Vancouver	Total
CN						
Origin	6	705	131	25	645	1,512
Enroute	421	673	187	202	1,206	2,689
Destination	33	212	205	9	606	1,065
	460	1,590	523	236	2,457	5,266
CP						
Origin			554	23	755	1,332
Enroute	18		675	100	1,545	2,338
Destination			120		585	705
	18		1,349	123	2,885	4,375
US Rail / Short Line						
Origin						
Enroute				105		105
Destination	1			53	11	65
	1			158	11	170

**Change in Daily Loads on Wheels By Pipeline Location - Prior 24 Hours**

	E Canada	Prince Rupert	Thunder Bay	USA/MEX	Vancouver	Total
CN						
Origin	0	130	0	0	105	235
Enroute	52	-7	-171	-22	-354	-502
Destination	0	-183	134	-4	250	197
	52	-60	-37	-26	1	-70
CP						
Origin			230	21	164	415
Enroute	-53		48	-64	37	-32
Destination			-314		-133	-447
	-53		-36	-43	68	-64
US Rail / Short Line						
Origin						
Enroute				16		16
Destination	0			7	-1	6
	0			23	-1	22

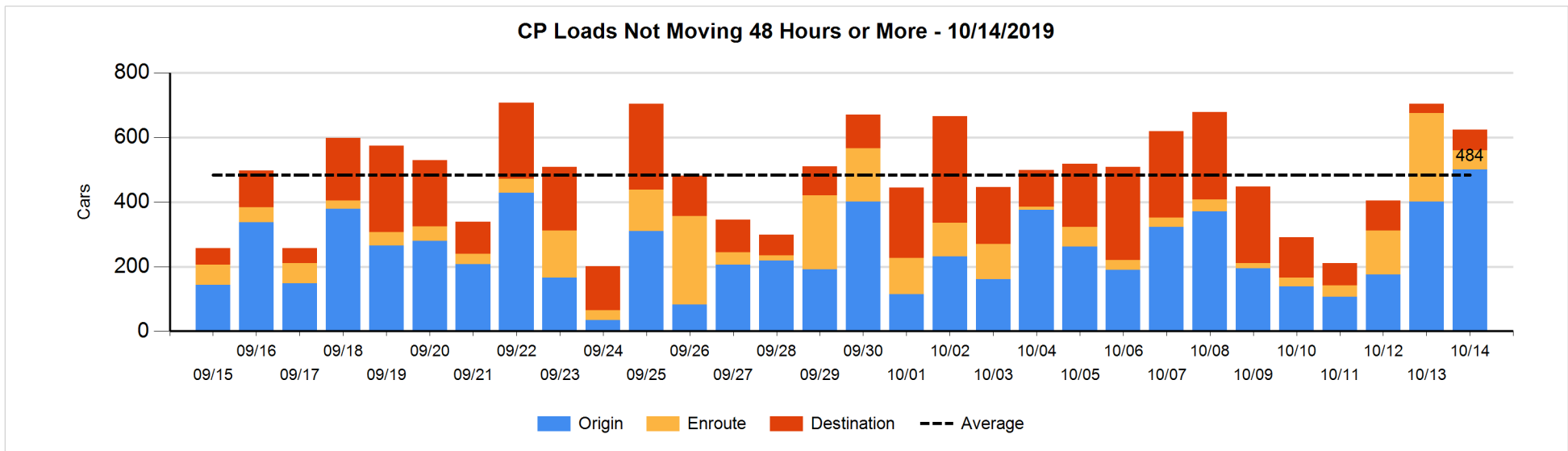
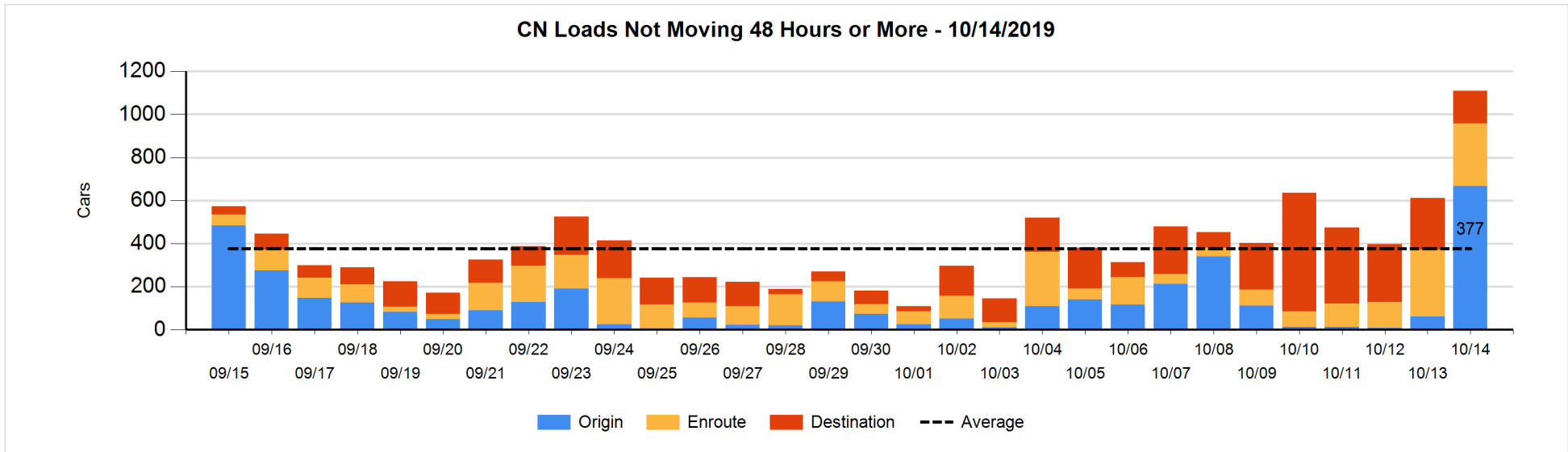


**Loads Not Moving 48 Hours or More - 10/14/2019**

	E Canada	Prince Rupert	Thunder Bay	USA/MEX	Vancouver	Total
<b>CN</b>						
Origin	6	406	131	1	123	667
Enroute	118	35	4	102	31	290
Destination	23	112	7	5	6	153
	147	553	142	108	160	1110
<b>CP</b>						
Origin			225	1	274	500
Enroute			1	29	30	60
Destination			1		63	64
			227	30	367	624
<b>US Rail / Short Line</b>						
Origin						
Enroute				7		7
Destination	1			38	2	41
	1			45	2	48

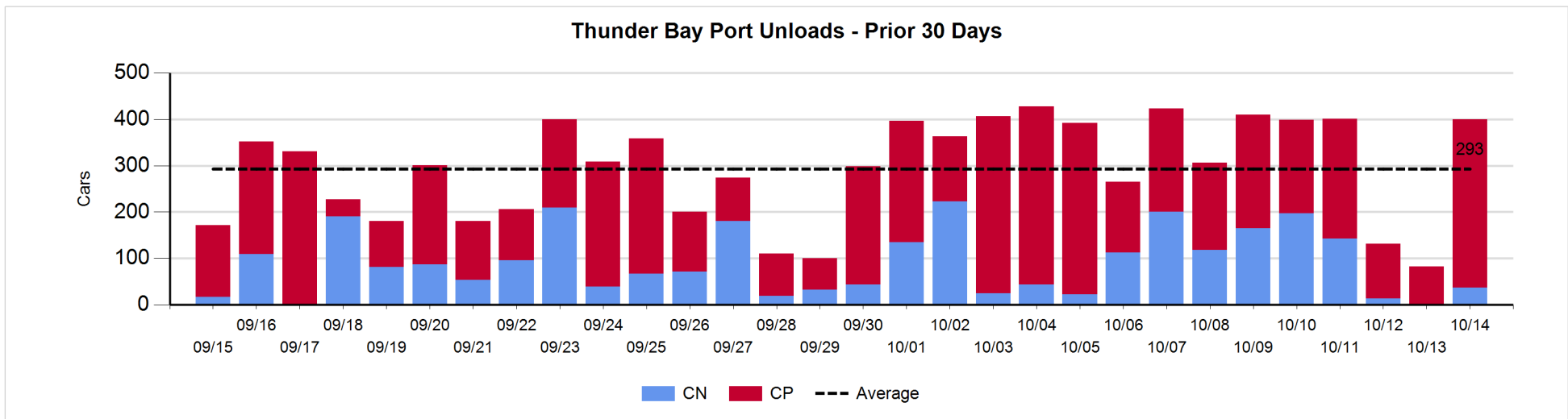
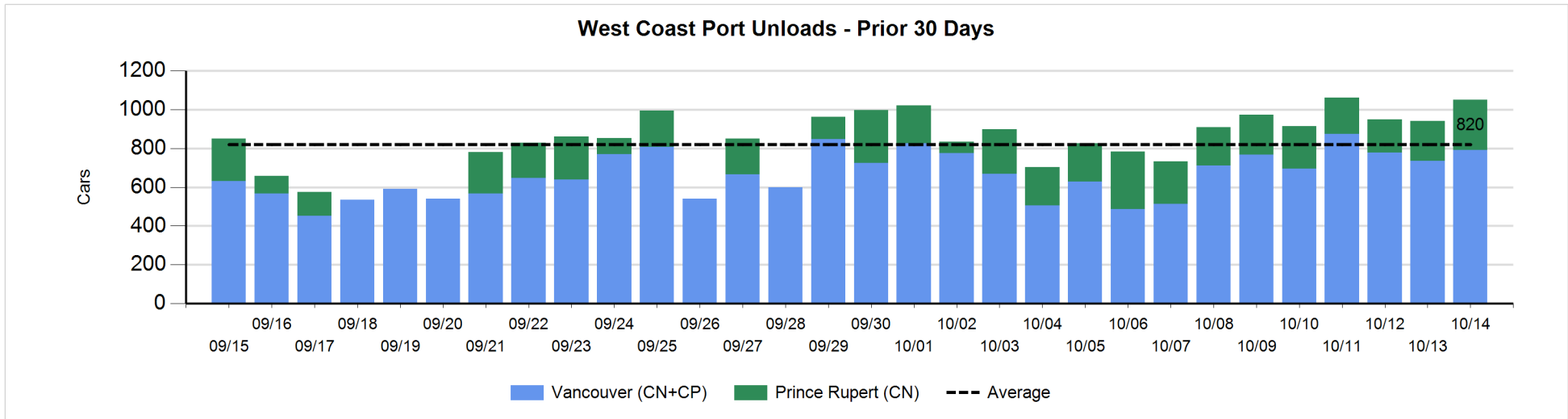
**Change in Loads Not Moving 48 Hours or More - 10/14/2019**

	E Canada	Prince Rupert	Thunder Bay	USA/MEX	Vancouver	Total
<b>CN</b>						
Origin	0	356	131	1	117	605
Enroute	-23	-19	0	-2	26	-18
Destination	-7	-76	-4	-1	0	-88
	-30	261	127	-2	143	499
<b>CP</b>						
Origin			0	-1	99	98
Enroute			-187	-37	10	-214
Destination			0		36	36
			-187	-38	145	-80
<b>US Rail / Short Line</b>						
Origin						
Enroute				-2		-2
Destination	0			-1	-2	-3
	0			-3	-2	-5



**Port Unloads - 10/14/2019**

	Prince Rupert	Vancouver	West Coast Total	Thunder Bay	Total
CN	258	322	580	37	617
CP		470	470	363	833
	258	792	1,050	400	1,450





**Port Terminal Status**

**Vancouver**

Daily Activity for 10/14/2019

	Cars Arrived	Cars Received in Interchange	Cars Delivered in Interchange	Cars Placed for Unloading	Loads on Wheels at Destination As of 10/14/2019
CN	769	144	212	415	606
CP	234	212	147	558	585
SRY		3		1	11

**Port Unloads**

	10/14	10/13	Week To Date	Last Week
CN	322	317	322	2,327
CP	470	419	470	2,747
SRY	1		1	45

**Age Profile of Loaded Cars Waiting Placement for Unloading**

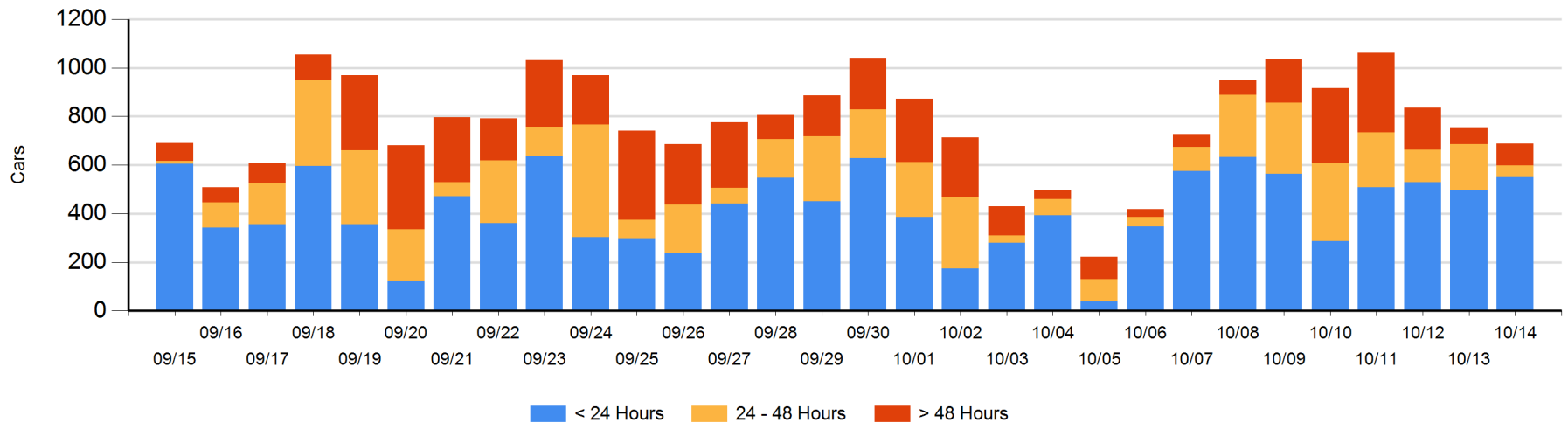
**Today**

	< 24 Hrs	24 - 48 Hrs	> 48-72 Hrs	> 72 Hrs	Total On Hand
CN	423	27	7	27	484
CP	126	23	44	12	205
SRY					0

**Change in Last 24 Hours**

	< 24 Hrs	24-48 Hrs	48 - 72 Hrs	> 72 Hrs
CN	276	-22	7	0
CP	-224	-117	44	-29
SRY				

**Loaded Cars on Hand Vancouver Waiting for Placement - Last 30 Days All Railways**



**Port Terminal Status**

**Prince Rupert**

Daily Activity for 10/14/2019

	Cars Arrived	Cars Received in Interchange	Cars Delivered in Interchange	Cars Placed for Unloading	Loads on Wheels at Destination As of 10/14/2019
CN	77			183	212

**Port Unloads**

	10/14	10/13	Week To Date	Last Week
CN	258	206	258	1,403

**Age Profile of Loaded Cars Waiting Placement for Unloading**

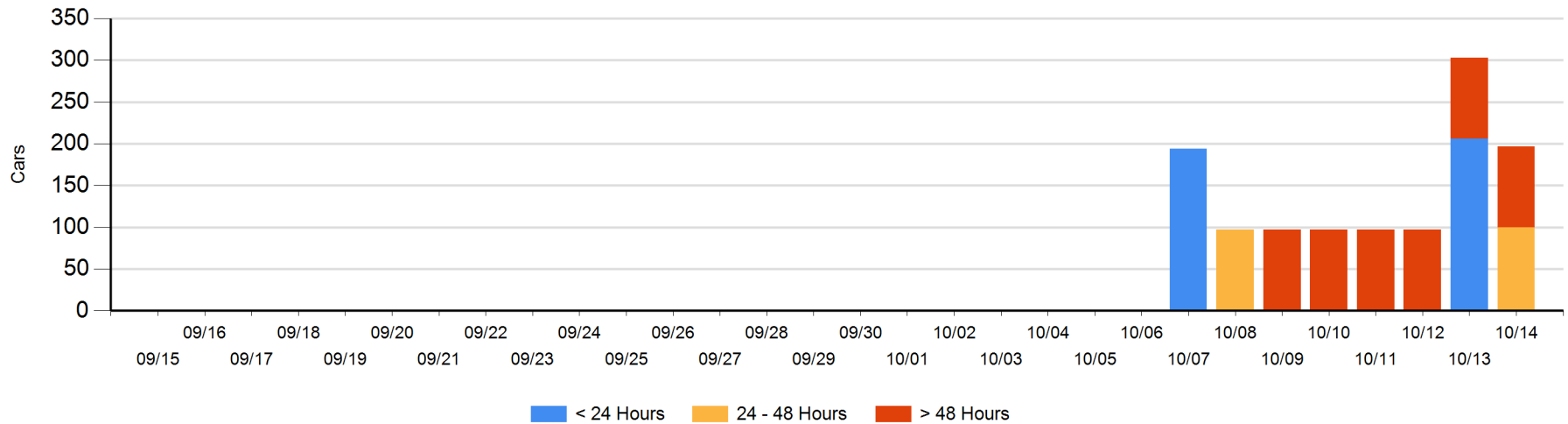
**Today**

	< 24 Hrs	24 - 48 Hrs	> 48-72 Hrs	> 72 Hrs	Total On Hand
CN		100		97	197

**Change in Last 24 Hours**

	< 24 Hrs	24-48 Hrs	48 - 72 Hrs	> 72 Hrs
CN	-206	100		0

Loaded Cars on Hand Prince Rupert Waiting for Placement - Last 30 Days All Railways



**Port Terminal Status**

**Thunder Bay**

Daily Activity for 10/14/2019

	Cars Arrived	Cars Received in Interchange	Cars Delivered in Interchange	Cars Placed for Unloading	Loads on Wheels at Destination As of 10/14/2019
CN	171			79	205
CP	51			243	120

**Port Unloads**

	10/14	10/13	Week To Date	Last Week
CN	37		37	837
CP	363	83	363	1,317

**Age Profile of Loaded Cars Waiting Placement for Unloading**

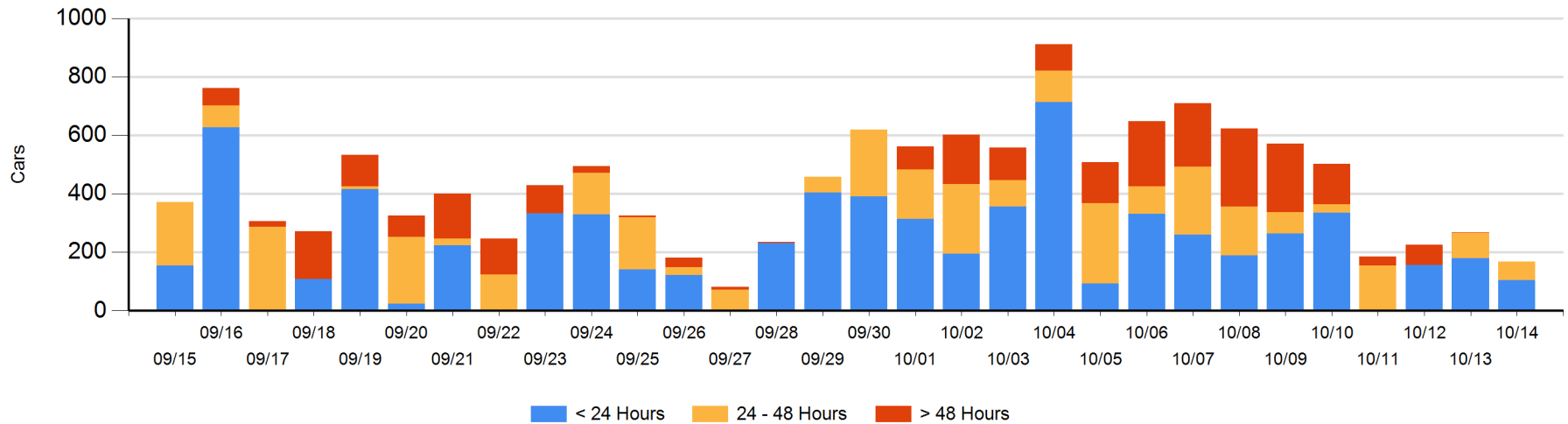
**Today**

	< 24 Hrs	24 - 48 Hrs	> 48-72 Hrs	> 72 Hrs	Total On Hand
CN	103	14			117
CP	1	50			51

**Change in Last 24 Hours**

	< 24 Hrs	24-48 Hrs	48 - 72 Hrs	> 72 Hrs
CN	89	4		-1
CP	-164	-28		

Loaded Cars on Hand Thunder Bay Waiting for Placement - Last 30 Days All Railways



## Measurement Definitions

Loads on Wheels	<p>Count of loaded rail cars including all rail cars that have been released loaded at origin and have not been reported by the railway as unloaded at destination.</p> <p>Counts include all rail cars (hopper cars and boxcars) moving within a pipeline.</p>
Loads Not Moving	<p>Loaded rail cars for which the railways have not reported a movement event for 48 hours or more whether the rail car is at origin, enroute or at destination.</p>
Port Unloads	<p>Count of rail cars reported by railways as unloaded at the western port destinations of Vancouver, Prince Rupert and Thunder Bay.</p> <p>Unload counts include all rail cars (hopper cars and boxcars) unloaded by all receivers including major port terminals, transloaders and other receivers.</p>
Cars Arrived	<p>Count of rail cars reported as arrived at the destination railway terminal.</p>
Cars Received in Interchange	<p>Count of rail cars received in interchange by each railway within a destination railway terminal. Interchange activity is tracked for the Vancouver and Thunder Bay pipelines as applicable.</p>
Cars Delivered in Interchange	<p>Count of rail cars delivered in interchange by each railway within a destination railway terminal. Interchange activity is tracked for the Vancouver and Thunder Bay pipelines as applicable.</p>
Cars Placed for Unloading	<p>Count of rail cars reported by the railways as placed loaded at the receiver's facility for unloading.</p>
Loads on Wheels at Destination	<p>Count of rail cars that remain under load within the destination railway terminal including rail cars that have been reported as placed for unloading but not yet reported as unloaded.</p>
Waiting Placement for Unloading	<p>Count of rail cars that have been reported as arrived at the destination railway terminal but not reported as placed for unloading by the railway.</p> <p>For the Ports of Vancouver, Prince Rupert and Thunder Bay the count of rail cars waiting placement for unloading is categorized by age – i.e. the elapsed time from arrival at destination to the current report date.</p>