

## SPEED READ

- Loads on wheels rose marginally overnight, reflecting an increase in CN volumes offset by lower CP volumes. On a net basis, volumes rose due to higher volumes in the Thunder Bay, E. Canada and USA/MEX corridors offset by reduced volumes in the Vancouver and Prince Rupert corridors.
- Network fluidity improved overnight, led by a decline in idle car counts on both CN and CP by 29% (-339) and 20% (-123), respectively. The total count of cars for 4+ days on both railways rose 30% (+80) overnight - currently at 347 cars.
- Two days in Week 11 unloads now ahead of prior week's performance by more than 400 unloads, reflecting improved week over week performance at Vancouver and Prince Rupert offset by reduced unloads at Thunder Bay.

=====

## Loads on Wheels

- Loads on wheels rose marginally by (+45) overnight, due to higher traffic on CN offset by lower traffic on CP - combined total at 9,904 and 16% above the trailing 30-day average.
- On a net basis, the increase in loads on wheels indicates higher volumes in the Thunder Bay, E. Canada and USA/MEX corridors offset by reduced volumes in the Vancouver and Prince Rupert corridors.
- CN volumes rose 5% (+288) overnight, with higher traffic across all corridors other than Prince Rupert which was largely unchanged. System wide CN loads on wheels currently at 5,601, the highest seen in the last 30 days, and 29% above the trailing 30-day average.
- CP volumes decreased for the third consecutive day, down 6% (-246) overnight, driven by a decline in traffic in the Vancouver and USA/MEX corridors offset by a rise in traffic in the Thunder Bay and E. Canada corridors. CP system wide loads on wheels now at 4,129 and 2% above the trailing 30-day average.
- Vancouver currently at 5,196, declined 4% (-205) overnight, now 14% above the trailing 30-day average.
- The Prince Rupert pipeline currently at 1,586, fell slightly by (-4) overnight and has now decreased for the third consecutive day, and 24% above the trailing 30-day average.
- Thunder Bay volumes rose 8% (+149) overnight - currently at 2,021 and 24% above the trailing 30-day average, with 71% of traffic moving on CP.

## Hopper Car Rationing

- No hopper cars were rationed by either CN or CP in week 9.

## Loads Not Moving

- **The count of cars not moving for 48+ hours decreased 26% (-462) overnight, reflecting reduced counts on both CN and CP. Idle car counts currently at 1,319 and 50% above the trailing 30-day average.**
- CN
  - **The count of idle cars for 48+ hours decreased 29% (-339) overnight - now at 819 cars.**
  - The number of cars idle for 4+ days decreased 6% (-9) overnight - currently at 148 cars.
  - The count of cars not moving for 7+ days declined significantly by 87% (-103) overnight - now at 16 cars.
  - Vancouver represents 16% of all idle cars.
  - In total 64% of all idle cars are dwelling at origin locations.
- CP
  - **CP idle car counts for 48+ hours declined 20% (-123) overnight - currently at 500 cars.**

- The number of cars idle for 4+ days rose 81% (+89) overnight - currently at 199 cars.
- The number of cars idle for 7+ days declined 5% (-3) overnight - now at 61 cars.
- Vancouver accounts for 71% of all idle cars.
- In total 61% of all idle cars are dwelling at origin locations.

### **Port Performance**

- CN and CP reported a total of 1,369 cars unloaded at the three major ports, 22% above the trailing 30-day average. Two days in Week 11 unloads now ahead of last week's pace by more than 400 unloads, reflecting higher unloads at Vancouver and Prince Rupert offset by reduced unloads at Thunder Bay.
- Vancouver
  - 783 unloads reported by CN and CP at the Port of Vancouver; CN - 346 and CP - 437. Two days in Week 11 unloads are tracking ahead of last week's performance by more than 300 unloads.
  - There are more than 1,150 cars on site at Vancouver with 650 cars arriving at the port in the last 24 hours.
  - CN and CP have more than 1,250 cars in British Columbia en route to Vancouver, with 500 cars at Kamloops and west, and 53% of traffic moving on CP.
- Prince Rupert
  - Prince Rupert reported 306 unloads, the highest seen in the last 30 days, now ahead of last week's unloads after two days by 150 unloads.
  - Loads on wheels remain above 1,000 cars - now at 1,586 cars.
  - There are more than 250 cars west of Jasper en route to Prince Rupert.
  - There are more than 100 cars on site at Prince Rupert with more than 200 cars arriving at the port in the last 24 hours.
- Thunder Bay
  - 280 unloads were reported at Thunder Bay yesterday. Two days in Week 11 unloads are tracking behind last week's pace by 50 unloads.
  - There are more than 700 cars on site at Thunder Bay with more than 650 cars arriving at the port in the prior 24 hours.
  - There are more than 350 cars en route to Thunder Bay from Winnipeg and east.

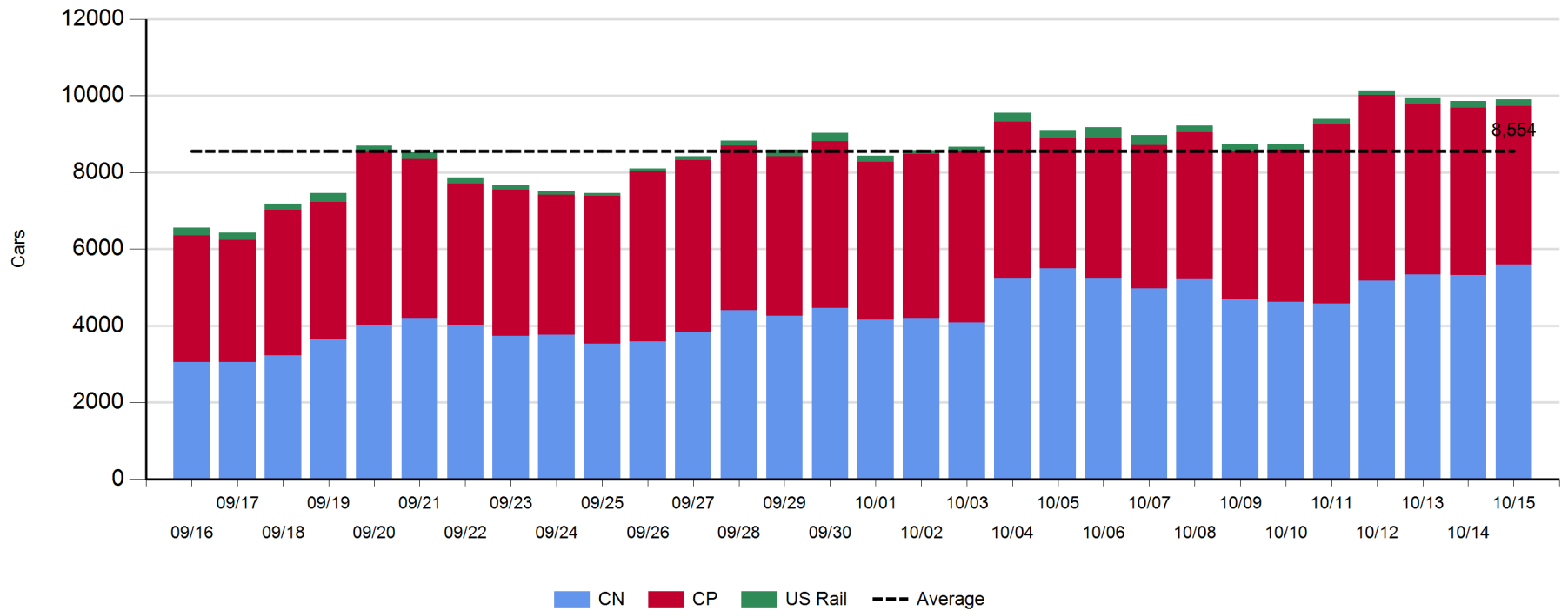
**Daily Loads on Wheels - 10/15/2019**

	E Canada	Prince Rupert	Thunder Bay	USA/MEX	Vancouver	Total
CN	535	1,586	578	253	2,649	5,601
CP	41		1,443	111	2,534	4,129
Short Line	1				13	14
US Rail				160		160
	577	1,586	2,021	524	5,196	9,904

**Change in Loads on Wheels - Prior 24 Hours**

	E Canada	Prince Rupert	Thunder Bay	USA/MEX	Vancouver	Total
CN	75	-4	55	18	144	288
CP	23		94	-12	-351	-246
Short Line	0				2	2
US Rail				1		1
	98	-4	149	7	-205	45

**Loads on Wheels - Prior 30 Days**

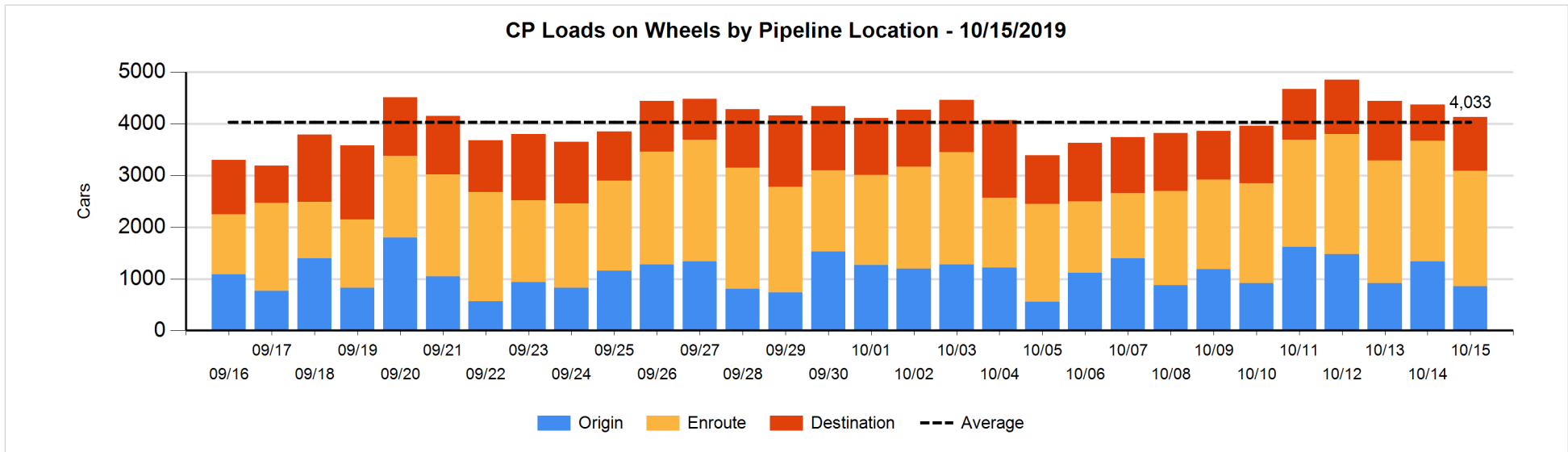
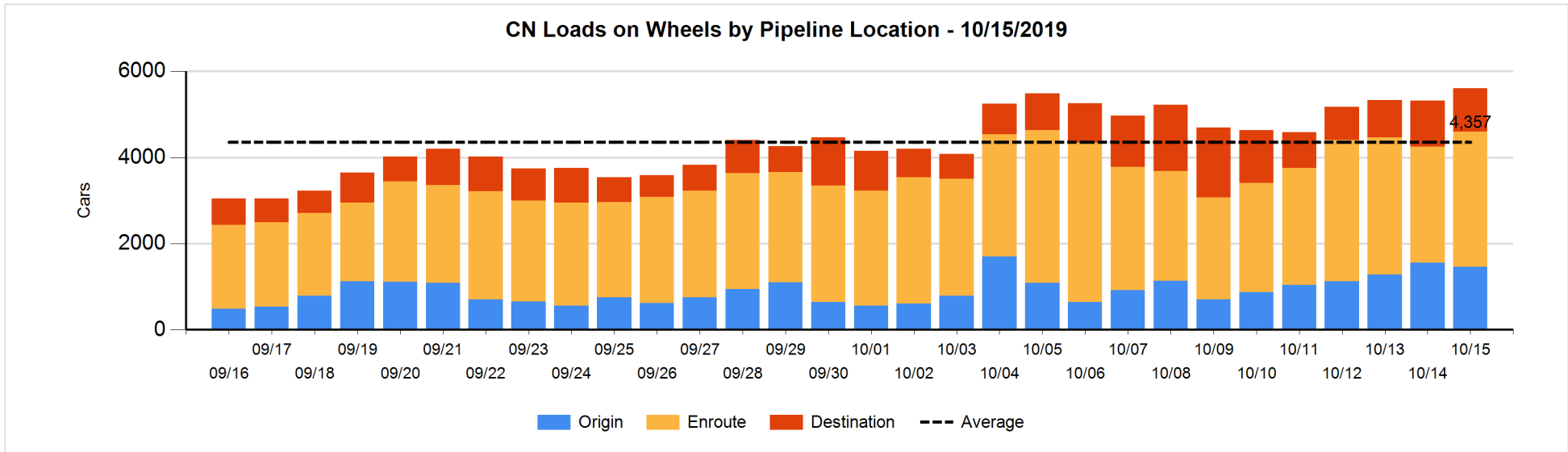


**Daily Loads on Wheels By Pipeline Location - 10/15/2019**

	E Canada	Prince Rupert	Thunder Bay	USA/MEX	Vancouver	Total
CN						
Origin	135	681	205	50	383	1,454
Enroute	387	788	261	181	1,530	3,147
Destination	13	117	112	22	736	1,000
	535	1,586	578	253	2,649	5,601
CP						
Origin	25		335	25	468	853
Enroute	16		496	75	1,653	2,240
Destination			612	11	413	1,036
	41		1,443	111	2,534	4,129
US Rail / Short Line						
Origin						
Enroute				101		101
Destination	1			59	13	73
	1			160	13	174

**Change in Daily Loads on Wheels By Pipeline Location - Prior 24 Hours**

	E Canada	Prince Rupert	Thunder Bay	USA/MEX	Vancouver	Total
CN						
Origin	129	-24	74	25	-310	-106
Enroute	-34	115	74	-20	324	459
Destination	-20	-95	-93	13	130	-65
	75	-4	55	18	144	288
CP						
Origin	25		-219	2	-287	-479
Enroute	-2		-179	-25	108	-98
Destination			492	11	-172	331
	23		94	-12	-351	-246
US Rail / Short Line						
Origin						
Enroute				-4		-4
Destination	0			5	2	7
	0			1	2	3

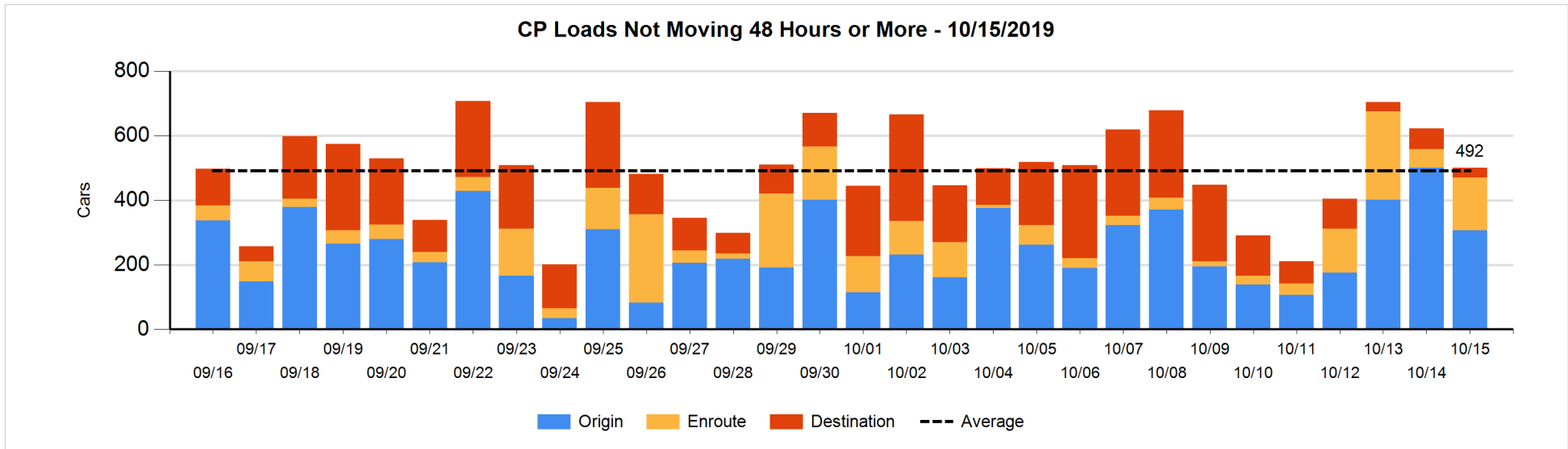
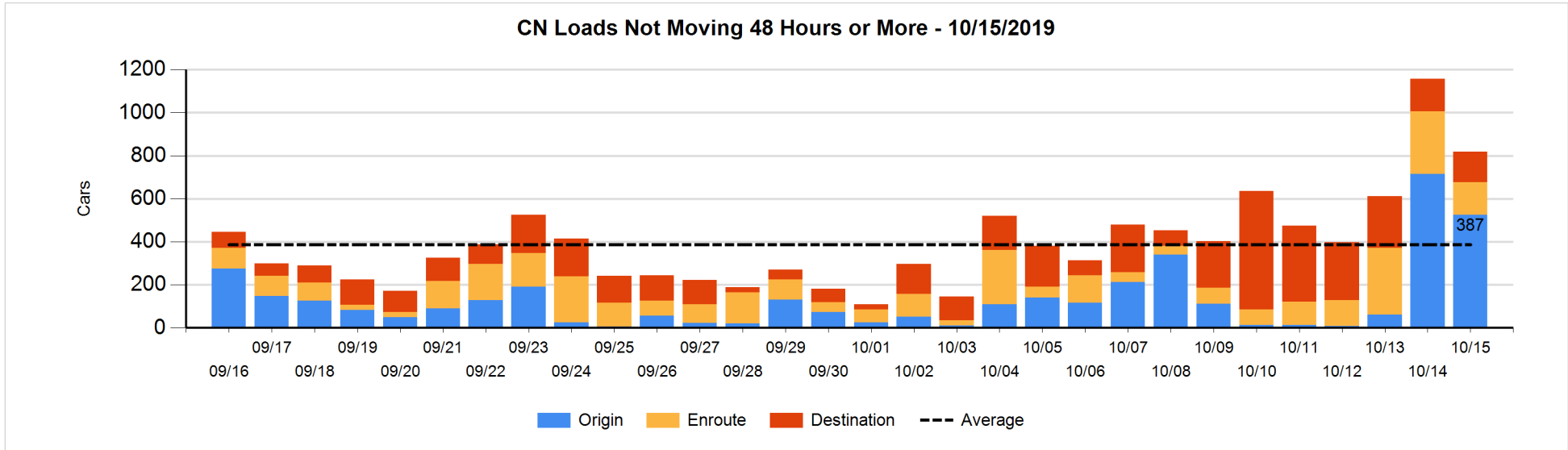


**Loads Not Moving 48 Hours or More - 10/15/2019**

	E Canada	Prince Rupert	Thunder Bay	USA/MEX	Vancouver	Total
<b>CN</b>						
Origin	6	379		24	116	525
Enroute	5	37	4	99	6	151
Destination	3	115	8	5	12	143
	14	531	12	128	134	819
<b>CP</b>						
Origin			112	1	194	307
Enroute	1			29	133	163
Destination			1		29	30
	1		113	30	356	500
<b>US Rail / Short Line</b>						
Origin						
Enroute				12		12
Destination	1			34	2	37
	1			46	2	49

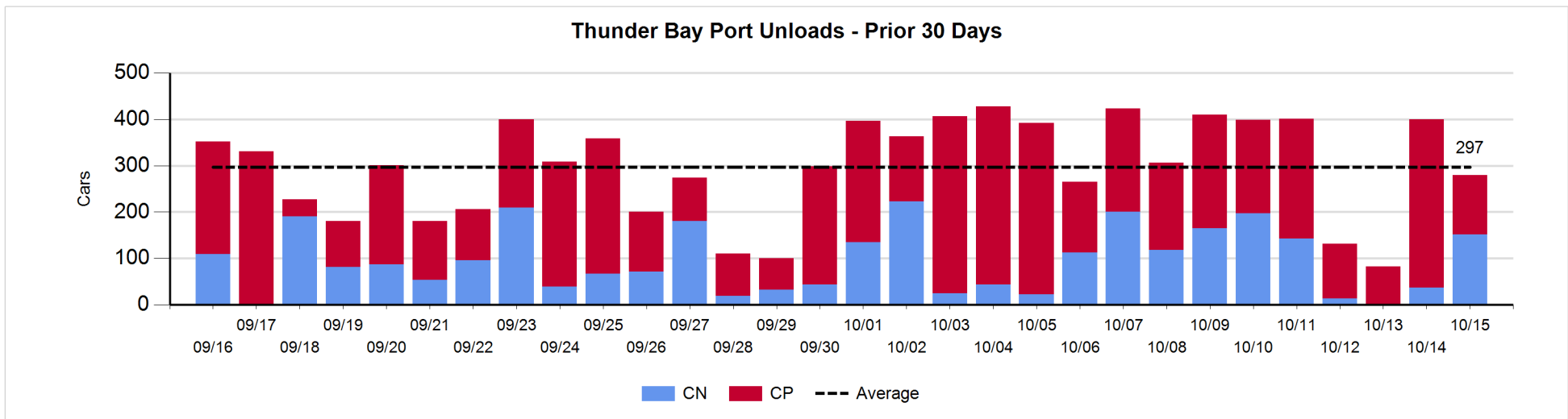
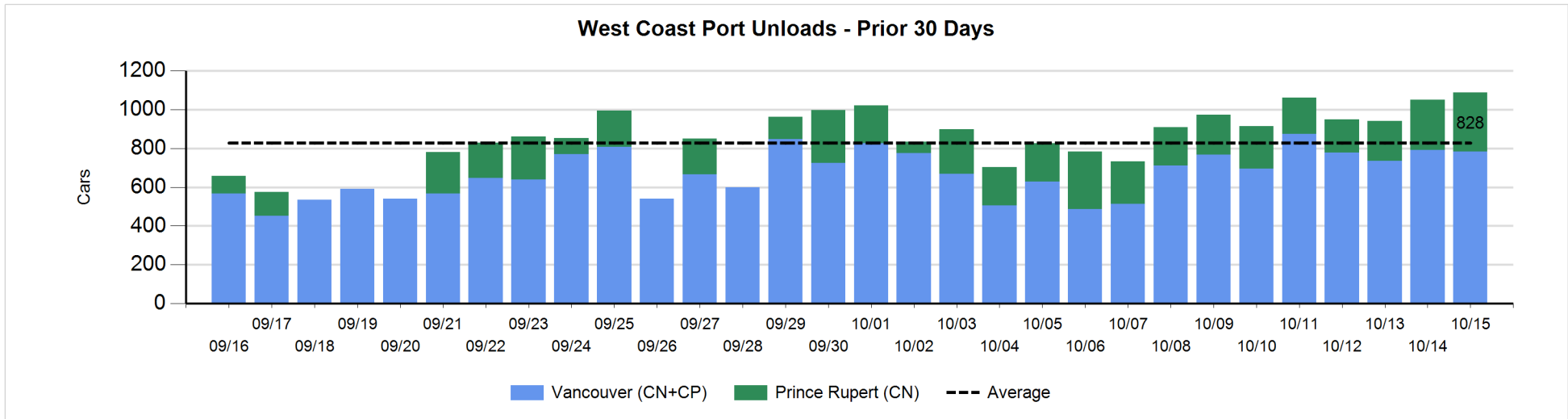
**Change in Loads Not Moving 48 Hours or More - 10/15/2019**

	E Canada	Prince Rupert	Thunder Bay	USA/MEX	Vancouver	Total
<b>CN</b>						
Origin	0	-27	-131	23	-55	-190
Enroute	-113	2	0	-3	-25	-139
Destination	-20	3	1	0	6	-10
	-133	-22	-130	20	-74	-339
<b>CP</b>						
Origin			-113	0	-80	-193
Enroute	1			0	103	104
Destination			0		-34	-34
	1		-113	0	-11	-123
<b>US Rail / Short Line</b>						
Origin						
Enroute				5		5
Destination	0			-4	0	-4
	0			1	0	1



Port Unloads - 10/15/2019

	Prince Rupert	Vancouver	West Coast Total	Thunder Bay	Total
CN	306	346	652	151	803
CP		437	437	129	566
	306	783	1,089	280	1,369





**Port Terminal Status**

**Vancouver**

Daily Activity for 10/15/2019

	Cars Arrived	Cars Received in Interchange	Cars Delivered in Interchange	Cars Placed for Unloading	Loads on Wheels at Destination As of 10/15/2019
CN	203	315	155	425	736
CP	450	155	323	292	413
SRY		8		3	13

**Port Unloads**

	10/15	10/14	Week To Date	Last Week
CN	346	322	668	2,327
CP	437	470	907	2,747
SRY	3	1	4	45

**Age Profile of Loaded Cars Waiting Placement for Unloading**

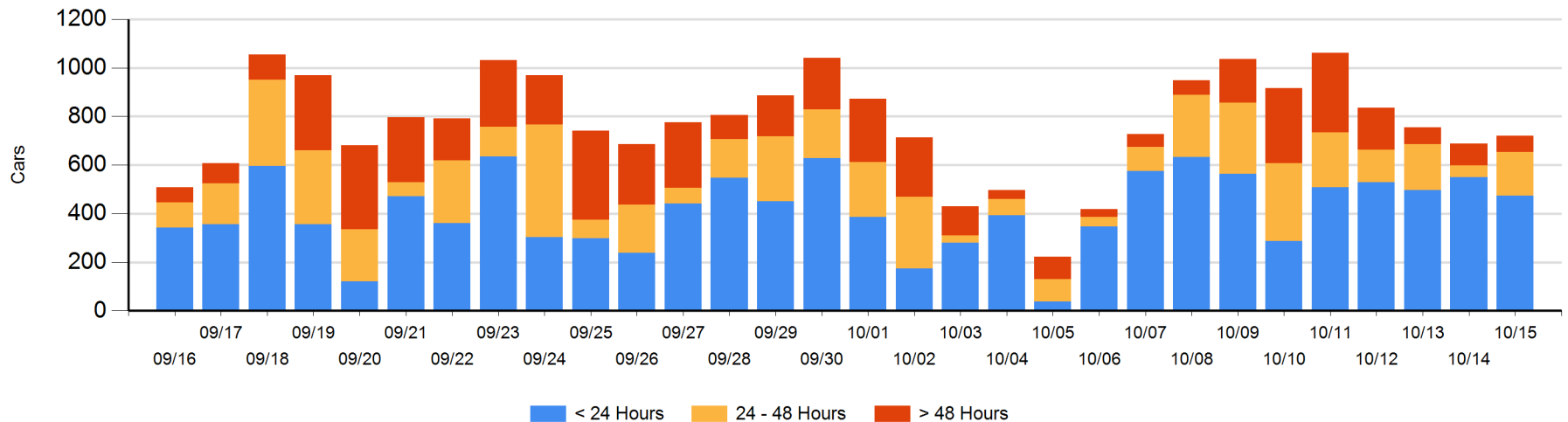
**Today**

	< 24 Hrs	24 - 48 Hrs	> 48-72 Hrs	> 72 Hrs	Total On Hand
CN	164	119	26		309
CP	310	61	15	25	411
SRY					0

**Change in Last 24 Hours**

	< 24 Hrs	24-48 Hrs	48 - 72 Hrs	> 72 Hrs
CN	-252	92	19	-27
CP	177	38	-29	13
SRY				

**Loaded Cars on Hand Vancouver Waiting for Placement - Last 30 Days All Railways**



**Port Terminal Status**

**Prince Rupert**

Daily Activity for 10/15/2019

	Cars Arrived	Cars Received in Interchange	Cars Delivered in Interchange	Cars Placed for Unloading	Loads on Wheels at Destination As of 10/15/2019
CN	211			307	117

**Port Unloads**

	10/15	10/14	Week To Date	Last Week
CN	306	258	564	1,403

**Age Profile of Loaded Cars Waiting Placement for Unloading**

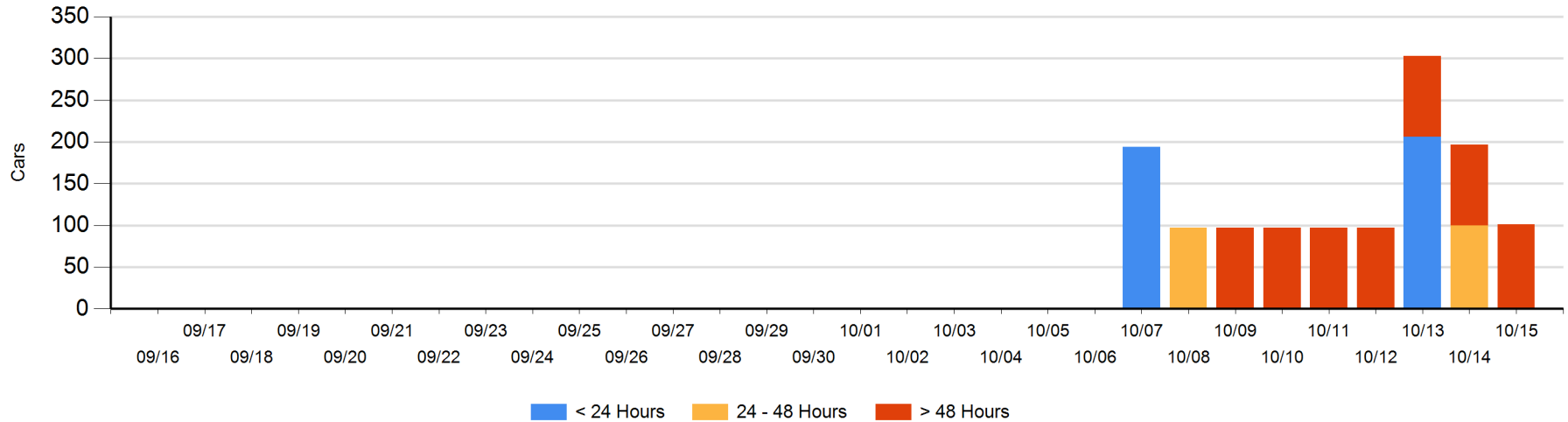
**Today**

	< 24 Hrs	24 - 48 Hrs	> 48-72 Hrs	> 72 Hrs	Total On Hand
CN	1		100		101

**Change in Last 24 Hours**

	< 24 Hrs	24-48 Hrs	48 - 72 Hrs	> 72 Hrs
CN	1	-100	100	-97

Loaded Cars on Hand Prince Rupert Waiting for Placement - Last 30 Days All Railways



**Port Terminal Status**

**Thunder Bay**

Daily Activity for 10/15/2019

	Cars Arrived	Cars Received in Interchange	Cars Delivered in Interchange	Cars Placed for Unloading	Loads on Wheels at Destination As of 10/15/2019
CN	57			71	112
CP	621			264	612

**Port Unloads**

	10/15	10/14	Week To Date	Last Week
CN	151	37	188	837
CP	129	363	492	1,317

**Age Profile of Loaded Cars Waiting Placement for Unloading**

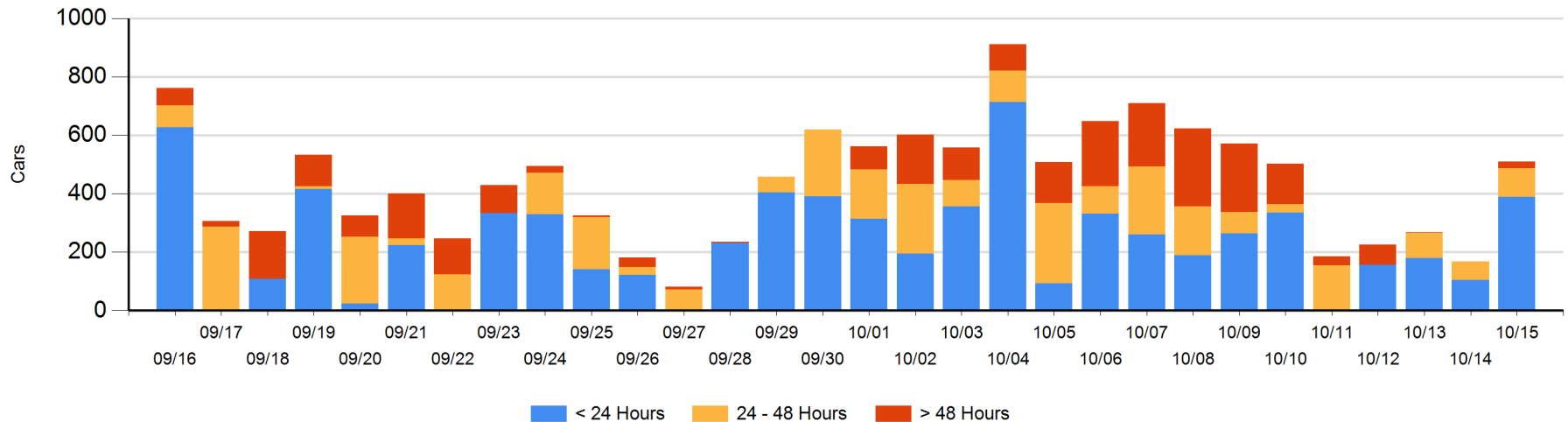
**Today**

	< 24 Hrs	24 - 48 Hrs	> 48-72 Hrs	> 72 Hrs	Total On Hand
CN	57	32	14		103
CP	332	66	10		408

**Change in Last 24 Hours**

	< 24 Hrs	24-48 Hrs	48 - 72 Hrs	> 72 Hrs
CN	-46	18	14	
CP	331	16	10	

**Loaded Cars on Hand Thunder Bay Waiting for Placement - Last 30 Days All Railways**



## Measurement Definitions

Loads on Wheels	<p>Count of loaded rail cars including all rail cars that have been released loaded at origin and have not been reported by the railway as unloaded at destination.</p> <p>Counts include all rail cars (hopper cars and boxcars) moving within a pipeline.</p>
Loads Not Moving	<p>Loaded rail cars for which the railways have not reported a movement event for 48 hours or more whether the rail car is at origin, enroute or at destination.</p>
Port Unloads	<p>Count of rail cars reported by railways as unloaded at the western port destinations of Vancouver, Prince Rupert and Thunder Bay.</p> <p>Unload counts include all rail cars (hopper cars and boxcars) unloaded by all receivers including major port terminals, transloaders and other receivers.</p>
Cars Arrived	<p>Count of rail cars reported as arrived at the destination railway terminal.</p>
Cars Received in Interchange	<p>Count of rail cars received in interchange by each railway within a destination railway terminal. Interchange activity is tracked for the Vancouver and Thunder Bay pipelines as applicable.</p>
Cars Delivered in Interchange	<p>Count of rail cars delivered in interchange by each railway within a destination railway terminal. Interchange activity is tracked for the Vancouver and Thunder Bay pipelines as applicable.</p>
Cars Placed for Unloading	<p>Count of rail cars reported by the railways as placed loaded at the receiver's facility for unloading.</p>
Loads on Wheels at Destination	<p>Count of rail cars that remain under load within the destination railway terminal including rail cars that have been reported as placed for unloading but not yet reported as unloaded.</p>
Waiting Placement for Unloading	<p>Count of rail cars that have been reported as arrived at the destination railway terminal but not reported as placed for unloading by the railway.</p> <p>For the Ports of Vancouver, Prince Rupert and Thunder Bay the count of rail cars waiting placement for unloading is categorized by age – i.e. the elapsed time from arrival at destination to the current report date.</p>