

**SPEED READ**

- Loads on wheels increased overnight, marking an increase in both CN and CP volumes. On a net basis, volumes increased due to higher volumes in the Vancouver corridor offset by lower traffic in all other corridors.
- Network fluidity improved overnight, led by a decline in idle car counts on both CN and CP by 49% (-401) and 76% (-382), respectively. The total count of cars for 4+ days on both railways remained unchanged overnight - now at 347 cars.
- Three days in Week 11 unloads now ahead of prior week's performance by more than 50 unloads, marking improved week over week performance at Vancouver and Prince Rupert offset by lower unloads at Thunder Bay.

=====

**Loads on Wheels**

- Loads on wheels increased 2% (+203) overnight, due to higher traffic on both CN and CP - combined total at 10,106 and 17% above the trailing 30-day average.
- On a net basis, the rise in loads on wheels reflects higher volumes in the Vancouver corridor offset by lower traffic in all other corridors.
- CN volumes gained 3% (+183) overnight, with higher traffic in the Vancouver and USA/MEX corridors offset by lower volumes in the Prince Rupert, Thunder Bay and E. Canada corridors. System wide CN loads on wheels now at 5,784, the highest seen in the last 30 days, and 30% above the trailing 30-day average.
- CP volumes increased 2% (+74) overnight, driven by an increase in volumes in the Vancouver corridor offset by a decline in volumes in the Thunder Bay and USA/MEX corridors. CP system wide loads on wheels currently at 4,202 and 3% above the trailing 30-day average.
- Vancouver now at 5,852, the highest seen in the last 30 days, increased 13% (+657) overnight, now 27% above the trailing 30-day average.
- The Prince Rupert pipeline now at 1,452, fell 8% (-134) overnight and has now decreased for the fourth consecutive day, and 10% above the trailing 30-day average.
- Thunder Bay volumes decreased significantly by 12% (-236) overnight - presently at 1,785 and 8% above the trailing 30-day average, with 72% of traffic moving on CP.

**Hopper Car Rationing**

- No hopper cars were rationed by either CN or CP in week 9.

**Loads Not Moving**

- **The count of cars not moving for 48+ hours fell significantly by 59% (-783) overnight, marking lower counts on both CN and CP. Idle car counts presently at 536 and 38% below the trailing 30-day average.**
- CN
  - **The count of idle cars for 48+ hours fell significantly by 49% (-401) overnight - currently at 418 cars.**
  - The number of cars idle for 4+ days increased 71% (+105) overnight - currently at 253 cars.
  - The count of cars not moving for 7+ days gained 13% (+2) overnight - presently at 18 cars.
  - Vancouver represents 11% of all idle cars.
  - In total 76% of all idle cars are dwelling at origin locations.
- CP
  - **CP idle car counts for 48+ hours decreased significantly by 76% (-382) overnight and have now decreased for the third consecutive day - currently at 118 cars, the lowest seen in the last 30 days.**

- The number of cars idle for 4+ days fell 53% (-105) overnight - currently at 94 cars.
- The number of cars idle for 7+ days increased 3% (+2) overnight - now at 63 cars.
- Vancouver accounts for 75% of all idle cars.
- In total 52% of all idle cars are dwelling at origin locations.

### **Port Performance**

- CN and CP reported a total of 1,029 cars unloaded at the three major ports, 9% below the trailing 30-day average. Three days in Week 11 unloads now ahead of last week's pace by more than 50 unloads, marking higher unloads at Vancouver and Prince Rupert offset by lower unloads at Thunder Bay.
- Vancouver
  - 544 unloads reported by CN and CP at the Port of Vancouver; CN - 287 and CP - 257. Three days in Week 11 unloads are tracking ahead of last week's performance by 100 unloads.
  - There are 1,700 cars on site at Vancouver with 1,100 cars arriving at the port in the last 24 hours.
  - CN and CP have 950 cars in British Columbia en route to Vancouver, with 350 cars at Kamloops and west, and 63% of traffic moving on CP.
- Prince Rupert
  - Prince Rupert reported 133 unloads, now ahead of last week's unloads after three days by more than 50 unloads.
  - Loads on wheels remain above 1,000 cars - now at 1,452 cars.
  - There are 300 cars west of Jasper en route to Prince Rupert.
  - There are 150+ cars on site at Prince Rupert with more than 150 cars arriving at the port in the last 24 hours.
- Thunder Bay
  - 352 unloads were reported at Thunder Bay yesterday. Three days in Week 11 unloads are tracking behind last week's pace by 100 unloads.
  - There are 700 cars on site at Thunder Bay with more than 300 cars arriving at the port in the prior 24 hours.
  - There are more than 350 cars en route to Thunder Bay from Winnipeg and east.

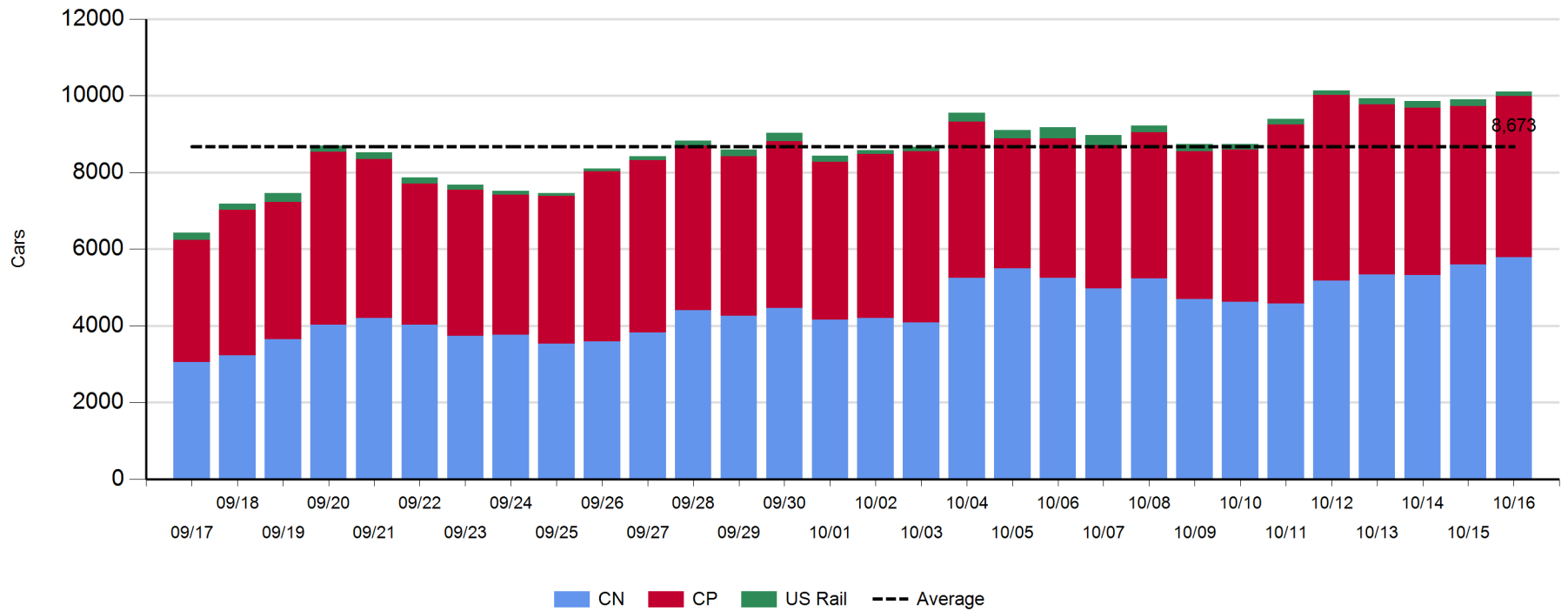
**Daily Loads on Wheels - 10/16/2019**

	E Canada	Prince Rupert	Thunder Bay	USA/MEX	Vancouver	Total
CN	511	1,452	499	288	3,034	5,784
CP	42		1,286	70	2,804	4,202
Short Line	1				14	15
US Rail				105		105
	554	1,452	1,785	463	5,852	10,106

**Change in Loads on Wheels - Prior 24 Hours**

	E Canada	Prince Rupert	Thunder Bay	USA/MEX	Vancouver	Total
CN	-24	-134	-79	35	385	183
CP	1		-157	-41	271	74
Short Line	0				1	1
US Rail				-55		-55
	-23	-134	-236	-61	657	203

**Loads on Wheels - Prior 30 Days**

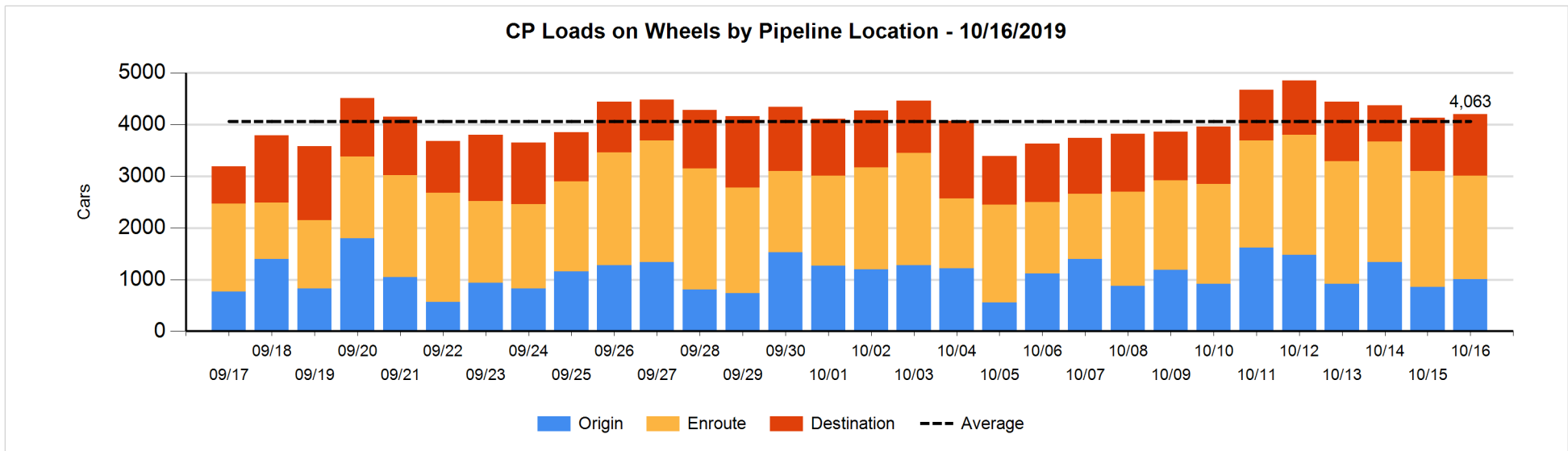
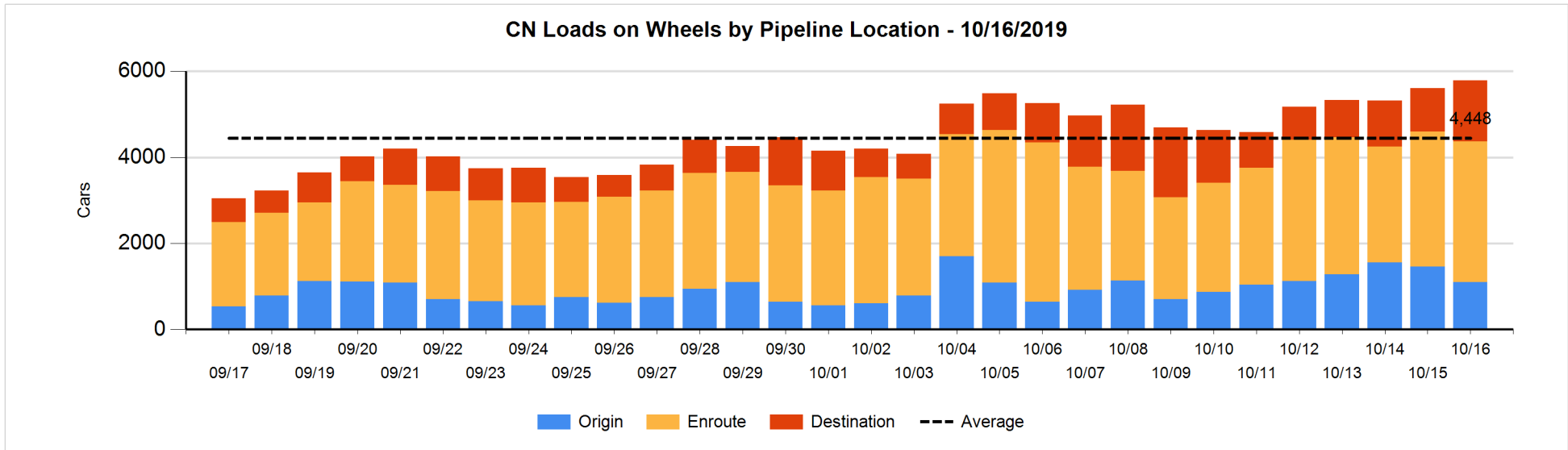


**Daily Loads on Wheels By Pipeline Location - 10/16/2019**

	E Canada	Prince Rupert	Thunder Bay	USA/MEX	Vancouver	Total
CN						
Origin	34	409	105	55	490	1,093
Enroute	465	884	285	198	1,439	3,271
Destination	12	159	109	35	1,105	1,420
	511	1,452	499	288	3,034	5,784
CP						
Origin	26		114	1	864	1,005
Enroute	15		586	58	1,349	2,008
Destination	1		586	11	591	1,189
	42		1,286	70	2,804	4,202
US Rail / Short Line						
Origin						
Enroute				53		53
Destination	1			52	14	67
	1			105	14	120

**Change in Daily Loads on Wheels By Pipeline Location - Prior 24 Hours**

	E Canada	Prince Rupert	Thunder Bay	USA/MEX	Vancouver	Total
CN						
Origin	-101	-272	-100	5	107	-361
Enroute	78	96	24	17	-91	124
Destination	-1	42	-3	13	369	420
	-24	-134	-79	35	385	183
CP						
Origin	1		-221	-24	396	152
Enroute	-1		90	-17	-306	-234
Destination	1		-26	0	181	156
	1		-157	-41	271	74
US Rail / Short Line						
Origin						
Enroute				-48		-48
Destination	0			-7	1	-6
	0			-55	1	-54

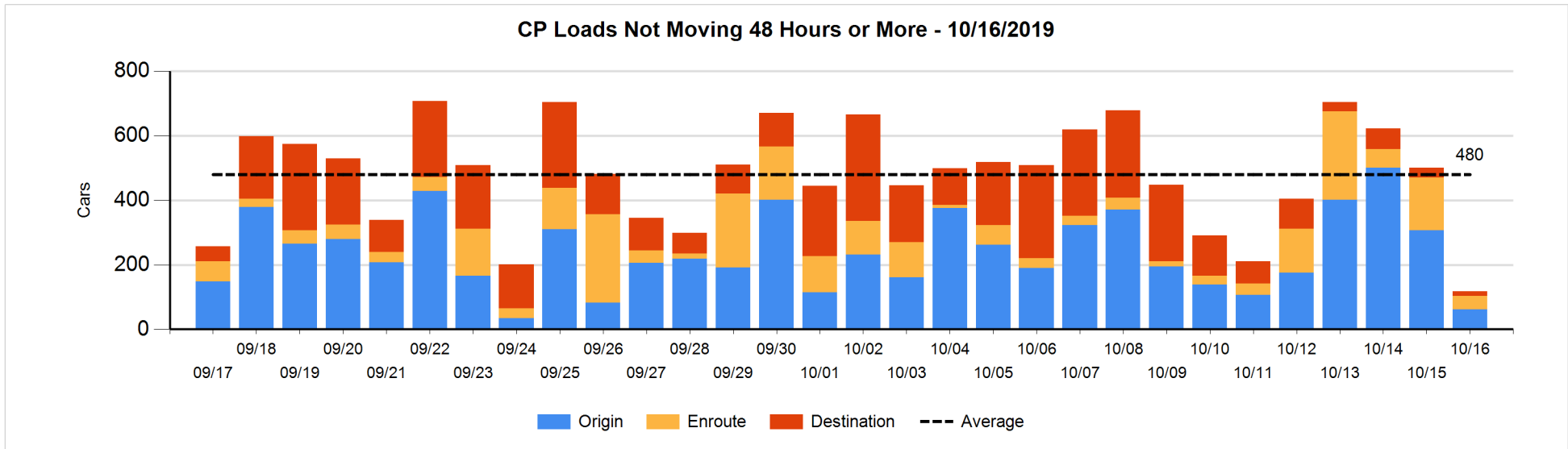
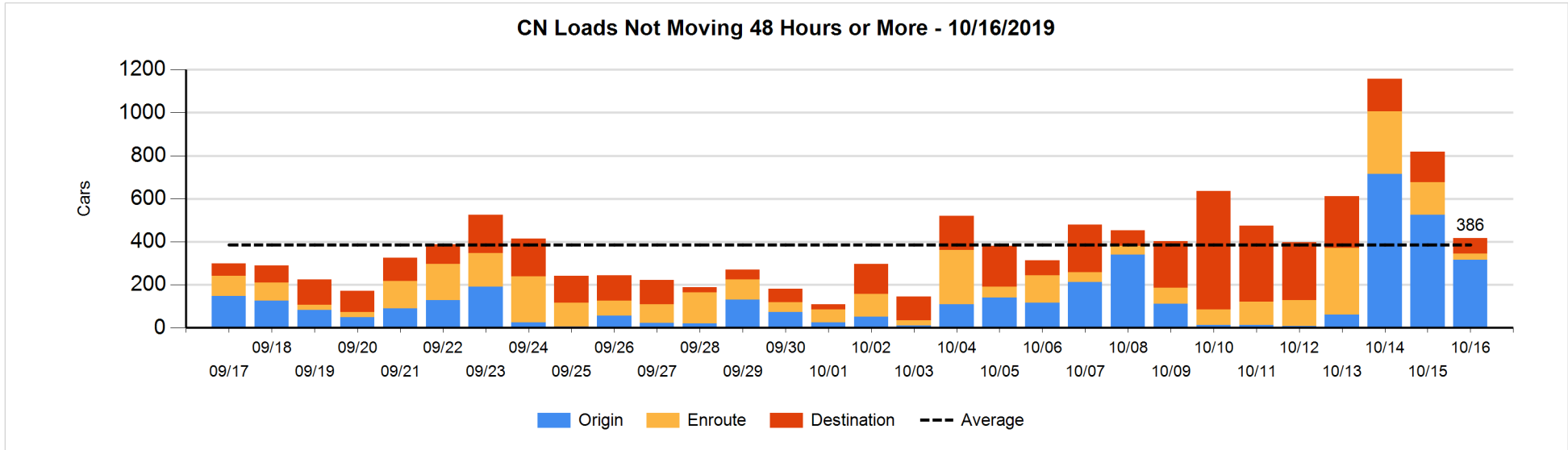


**Loads Not Moving 48 Hours or More - 10/16/2019**

	E Canada	Prince Rupert	Thunder Bay	USA/MEX	Vancouver	Total
<b>CN</b>						
Origin	6	309			1	316
Enroute	14	5	4	3	3	29
Destination	10	15	7	1	40	73
	30	329	11	4	44	418
<b>CP</b>						
Origin					61	61
Enroute			3	19	21	43
Destination			7		7	14
			10	19	89	118
<b>US Rail / Short Line</b>						
Origin						
Enroute				10		10
Destination	1			28	2	31
	1			38	2	41

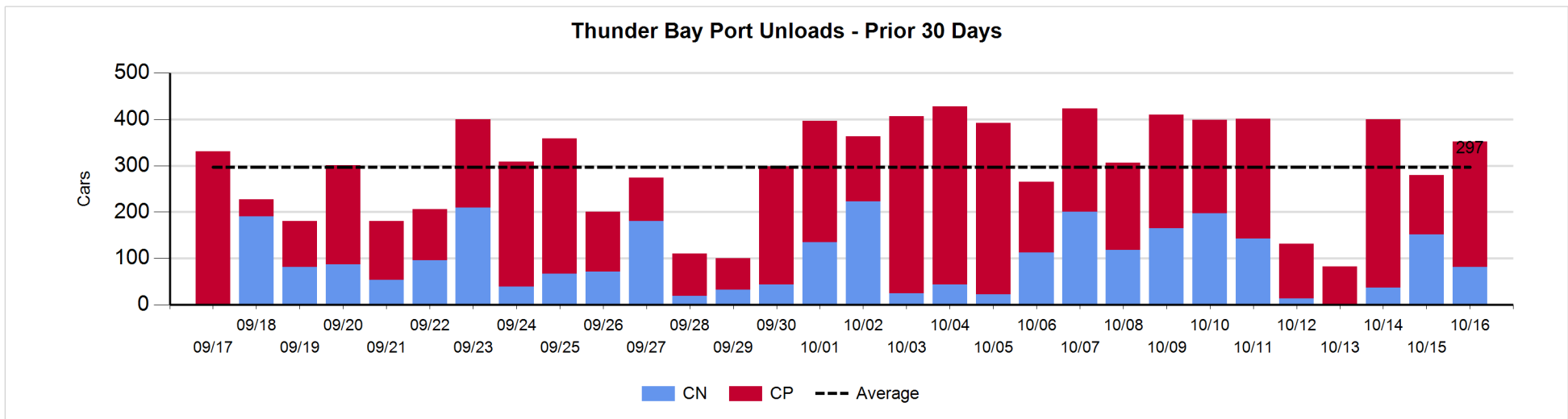
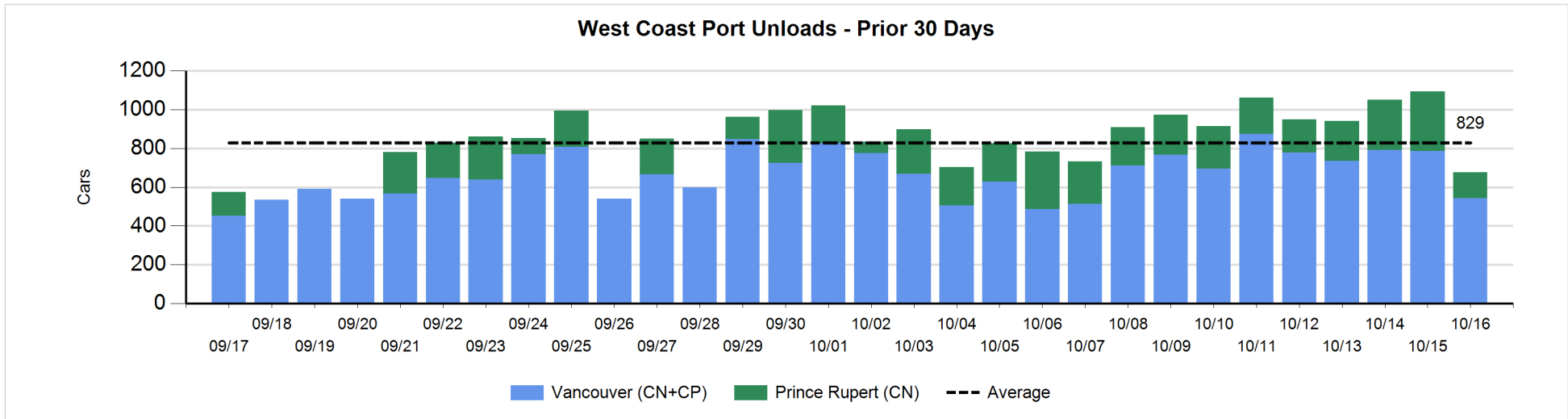
**Change in Loads Not Moving 48 Hours or More - 10/16/2019**

	E Canada	Prince Rupert	Thunder Bay	USA/MEX	Vancouver	Total
<b>CN</b>						
Origin	0	-70		-24	-115	-209
Enroute	9	-32	0	-96	-3	-122
Destination	7	-100	-1	-4	28	-70
	16	-202	-1	-124	-90	-401
<b>CP</b>						
Origin			-112	-1	-133	-246
Enroute	-1		3	-10	-112	-120
Destination			6		-22	-16
	-1		-103	-11	-267	-382
<b>US Rail / Short Line</b>						
Origin						
Enroute				-2		-2
Destination	0			-6	0	-6
	0			-8	0	-8



**Port Unloads - 10/16/2019**

	Prince Rupert	Vancouver	West Coast Total	Thunder Bay	Total
CN	133	287	420	81	501
CP		257	257	271	528
	133	544	677	352	1,029





**Port Terminal Status**

**Vancouver**

Daily Activity for 10/16/2019

	Cars Arrived	Cars Received in Interchange	Cars Delivered in Interchange	Cars Placed for Unloading	Loads on Wheels at Destination As of 10/16/2019
CN	421	228	182	308	1,105
CP	681	178	231	275	591
SRY	1	7		6	14

**Port Unloads**

	10/16	10/15	Week To Date	Last Week
CN	287	346	955	2,327
CP	257	440	1,167	2,747
SRY	6	3	10	45

**Age Profile of Loaded Cars Waiting Placement for Unloading**

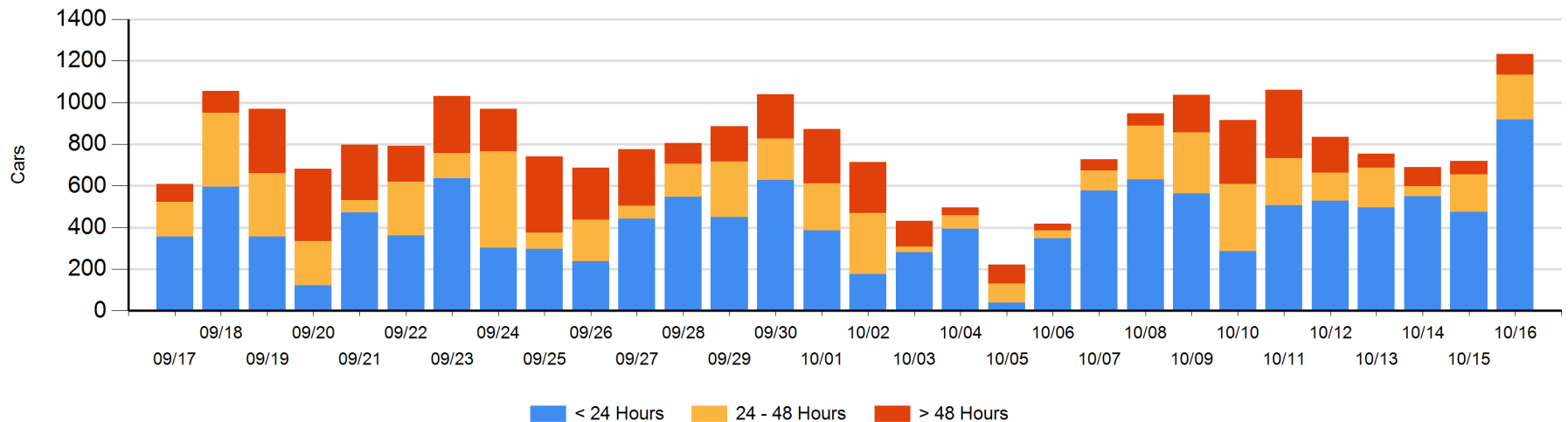
**Today**

	< 24 Hrs	24 - 48 Hrs	> 48-72 Hrs	> 72 Hrs	Total On Hand
CN	380	91	43	19	533
CP	538	126	7	29	700
SRY					0

**Change in Last 24 Hours**

	< 24 Hrs	24-48 Hrs	48 - 72 Hrs	> 72 Hrs
CN	217	-28	17	19
CP	227	65	-8	4
SRY				

**Loaded Cars on Hand Vancouver Waiting for Placement - Last 30 Days All Railways**



**Port Terminal Status**

**Prince Rupert**

Daily Activity for 10/16/2019

	Cars Arrived	Cars Received in Interchange	Cars Delivered in Interchange	Cars Placed for Unloading	Loads on Wheels at Destination As of 10/16/2019
CN	175			171	159

**Port Unloads**

	10/16	10/15	Week To Date	Last Week
CN	133	306	697	1,403

**Age Profile of Loaded Cars Waiting Placement for Unloading**

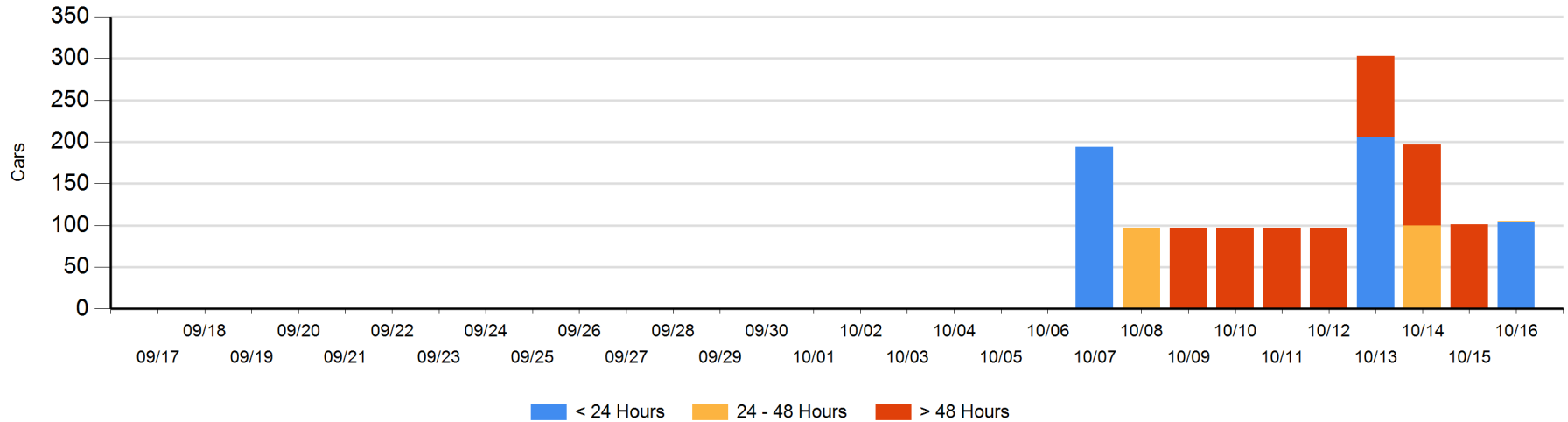
**Today**

	< 24 Hrs	24 - 48 Hrs	> 48-72 Hrs	> 72 Hrs	Total On Hand
CN	104	1			105

**Change in Last 24 Hours**

	< 24 Hrs	24-48 Hrs	48 - 72 Hrs	> 72 Hrs
CN	103	1	-100	

Loaded Cars on Hand Prince Rupert Waiting for Placement - Last 30 Days All Railways



**Port Terminal Status**

**Thunder Bay**

Daily Activity for 10/16/2019

	Cars Arrived	Cars Received in Interchange	Cars Delivered in Interchange	Cars Placed for Unloading	Loads on Wheels at Destination As of 10/16/2019
CN	76			176	109
CP	245			201	586

**Port Unloads**

	10/16	10/15	Week To Date	Last Week
CN	81	151	269	837
CP	271	129	763	1,317

**Age Profile of Loaded Cars Waiting Placement for Unloading**

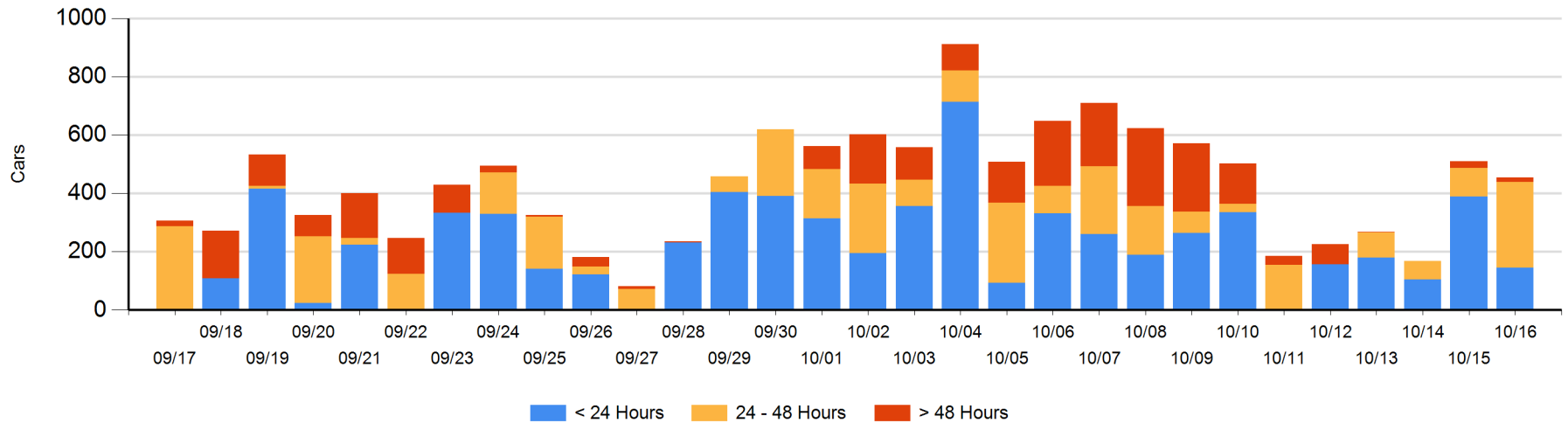
**Today**

	< 24 Hrs	24 - 48 Hrs	> 48-72 Hrs	> 72 Hrs	Total On Hand
CN		2	1		3
CP	144	292	10	6	452

**Change in Last 24 Hours**

	< 24 Hrs	24-48 Hrs	48 - 72 Hrs	> 72 Hrs
CN	-57	-30	-13	
CP	-188	226	0	6

Loaded Cars on Hand Thunder Bay Waiting for Placement - Last 30 Days All Railways



## Measurement Definitions

Loads on Wheels	<p>Count of loaded rail cars including all rail cars that have been released loaded at origin and have not been reported by the railway as unloaded at destination.</p> <p>Counts include all rail cars (hopper cars and boxcars) moving within a pipeline.</p>
Loads Not Moving	<p>Loaded rail cars for which the railways have not reported a movement event for 48 hours or more whether the rail car is at origin, enroute or at destination.</p>
Port Unloads	<p>Count of rail cars reported by railways as unloaded at the western port destinations of Vancouver, Prince Rupert and Thunder Bay.</p> <p>Unload counts include all rail cars (hopper cars and boxcars) unloaded by all receivers including major port terminals, transloaders and other receivers.</p>
Cars Arrived	<p>Count of rail cars reported as arrived at the destination railway terminal.</p>
Cars Received in Interchange	<p>Count of rail cars received in interchange by each railway within a destination railway terminal. Interchange activity is tracked for the Vancouver and Thunder Bay pipelines as applicable.</p>
Cars Delivered in Interchange	<p>Count of rail cars delivered in interchange by each railway within a destination railway terminal. Interchange activity is tracked for the Vancouver and Thunder Bay pipelines as applicable.</p>
Cars Placed for Unloading	<p>Count of rail cars reported by the railways as placed loaded at the receiver's facility for unloading.</p>
Loads on Wheels at Destination	<p>Count of rail cars that remain under load within the destination railway terminal including rail cars that have been reported as placed for unloading but not yet reported as unloaded.</p>
Waiting Placement for Unloading	<p>Count of rail cars that have been reported as arrived at the destination railway terminal but not reported as placed for unloading by the railway.</p> <p>For the Ports of Vancouver, Prince Rupert and Thunder Bay the count of rail cars waiting placement for unloading is categorized by age – i.e. the elapsed time from arrival at destination to the current report date.</p>