

SPEED READ

- Loads on wheels increased overnight, reflecting a rise in both CN and CP volumes. On a net basis, volumes increased due to higher traffic in the Prince Rupert and Thunder Bay corridors offset by reduced traffic in all other corridors.
- Network fluidity deteriorated overnight, led by a rise in idle car counts on both CN and CP by 56% (+235) and 303% (+358), respectively. The total count of cars for 4+ days on both railways decreased 31% (-107) overnight - now at 240 cars.
- Four days in Week 11 unloads now behind prior week's performance by more than 150 unloads, marking reduced unloads at Thunder Bay and Vancouver offset by improved week over week performance at Prince Rupert.

Loads on Wheels

- Loads on wheels increased for the third consecutive day, up 5% (+490) overnight, due to higher traffic on both CN and CP - combined total at 10,596, the highest seen in the last 30 days, and 20% above the trailing 30-day average.
- On a net basis, the rise in loads on wheels reflects higher traffic in the Prince Rupert and Thunder Bay corridors offset by reduced traffic in all other corridors.
- CN volumes increased for the third consecutive day, up 7% (+433) overnight, with higher volumes in the Prince Rupert and Thunder Bay corridors offset by reduced traffic in the Vancouver, E. Canada and USA/MEX corridors. System wide CN loads on wheels now at 6,219, the highest seen in the last 30 days, and 37% above the trailing 30-day average.
- CP volumes increased 2% (+75) overnight, driven by a rise in volumes in the Vancouver and Thunder Bay corridors offset by a decline in volumes in the USA/MEX corridor. CP system wide loads on wheels now at 4,276 and 4% above the trailing 30-day average.
- Vancouver presently at 5,832, fell slightly by (-21) overnight, now 25% above the trailing 30-day average.
- The Prince Rupert pipeline now at 1,801, increased 24% (+349) overnight, now 32% above the trailing 30-day average.
- Thunder Bay volumes increased 13% (+231) overnight - presently at 2,016 and 19% above the trailing 30-day average, with 64% of traffic moving on CP.

Hopper Car Rationing

- No hopper cars were rationed by either CN or CP in week 10.

Loads Not Moving

- **The count of cars not moving for 48+ hours increased 111% (+593) overnight, reflecting higher counts on both CN and CP. Idle car counts presently at 1,129 and 27% above the trailing 30-day average.**
- CN
 - **The count of idle cars for 48+ hours increased 56% (+235) overnight - presently at 653 cars.**
 - The number of cars idle for 4+ days fell 42% (-106) overnight - currently at 147 cars.
 - The count of cars not moving for 7+ days increased 56% (+10) overnight - now at 28 cars.
 - Vancouver represents 57% of all idle cars.
 - In total 39% of all idle cars are dwelling at origin locations.
- CP
 - **CP idle car counts for 48+ hours increased 303% (+358) overnight - currently at 476 cars.**
 - The number of cars idle for 4+ days fell slightly by 1% (-1) overnight - now at 93 cars.

- The number of cars idle for 7+ days increased 27% (+17) overnight - now at 80 cars, the highest seen in the last 30 days.
- Vancouver accounts for 22% of all idle cars.
- In total 14% of all idle cars are dwelling at origin locations.

Port Performance

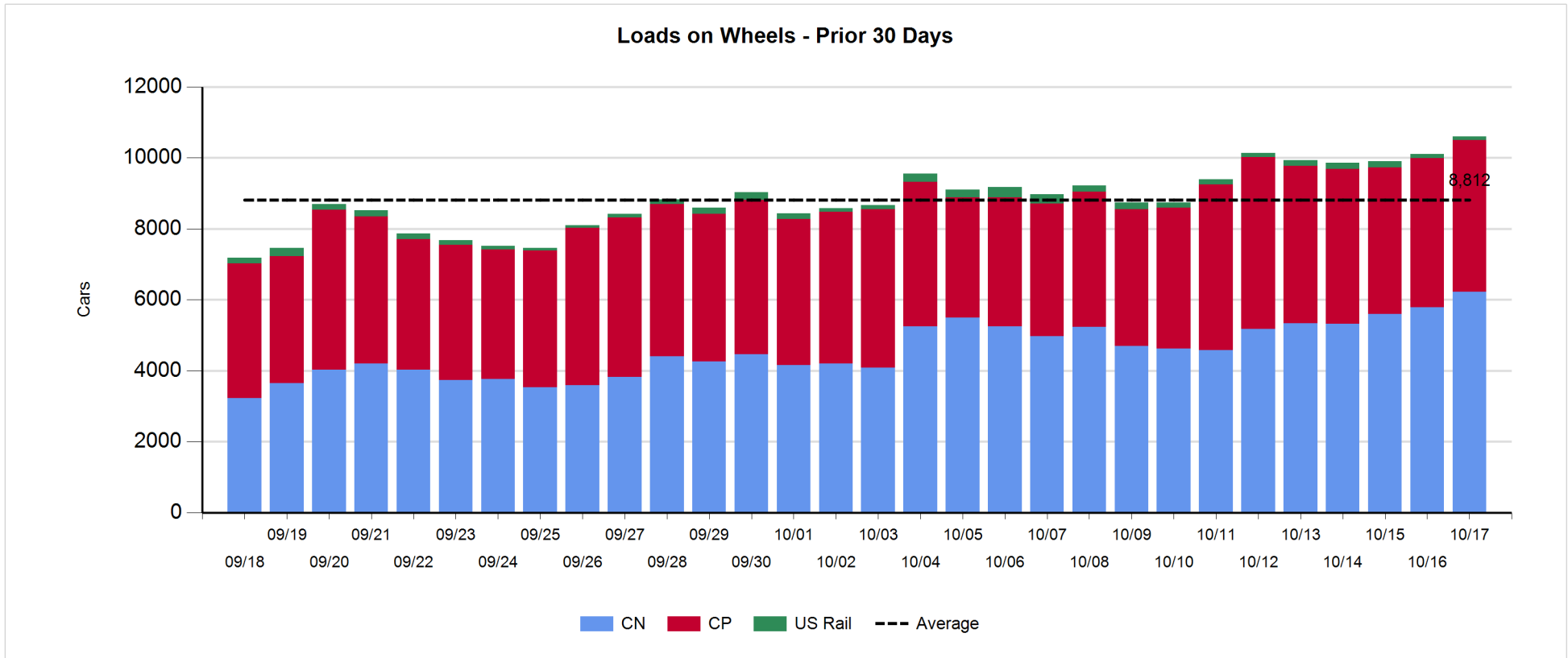
- CN and CP reported a total of 1,068 cars unloaded at the three major ports, 6% below the trailing 30-day average. Four days in Week 11 unloads now behind last week's pace by more than 150 unloads, marking reduced unloads at Thunder Bay and Vancouver offset by higher unloads at Prince Rupert.
- Vancouver
 - 557 unloads reported by CN and CP at the Port of Vancouver; CN - 185 and CP - 372. Four days in Week 11 unloads are tracking behind last week's performance by less than 50 unloads.
 - There are more than 1,800 cars on site at Vancouver with more than 650 cars arriving at the port in the last 24 hours.
 - CN and CP have more than 1,200 cars in British Columbia en route to Vancouver, with 400 cars at Kamloops and west, and 60% of traffic moving on CP.
- Prince Rupert
 - Prince Rupert reported 211 unloads, now ahead of last week's unloads after four days by more than 50 unloads.
 - Loads on wheels remain above 1,000 cars - now at 1,801 cars.
 - There are more than 350 cars west of Jasper en route to Prince Rupert.
 - There are 13 cars on site at Prince Rupert with more than 50 cars arriving at the port in the last 24 hours.
- Thunder Bay
 - 300 unloads were reported at Thunder Bay yesterday. Four days in Week 11 unloads are tracking behind last week's pace by 200 unloads.
 - There are 700 cars on site at Thunder Bay with 300 cars arriving at the port in the prior 24 hours.
 - There are 500 cars en route to Thunder Bay from Winnipeg and east.

Daily Loads on Wheels - 10/17/2019

	E Canada	Prince Rupert	Thunder Bay	USA/MEX	Vancouver	Total
CN	484	1,801	716	271	2,947	6,219
CP	42		1,300	64	2,870	4,276
Short Line					15	15
US Rail				86		86
	526	1,801	2,016	421	5,832	10,596

Change in Loads on Wheels - Prior 24 Hours

	E Canada	Prince Rupert	Thunder Bay	USA/MEX	Vancouver	Total
CN	-27	349	217	-17	-89	433
CP	0		14	-6	67	75
Short Line	-1				1	0
US Rail				-18		-18
	-28	349	231	-41	-21	490

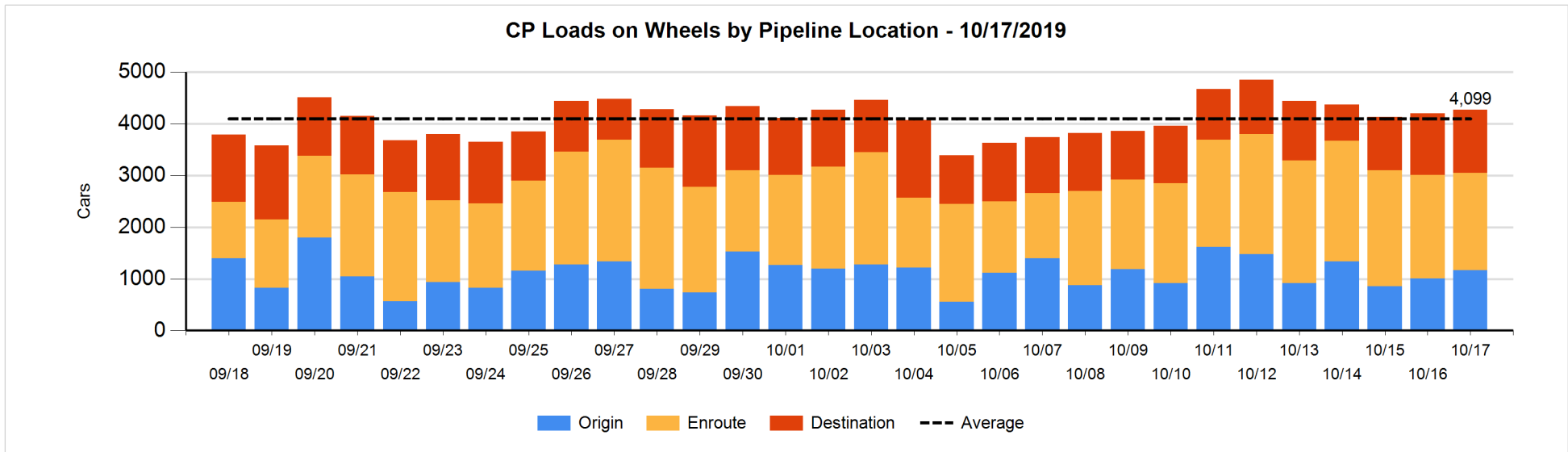
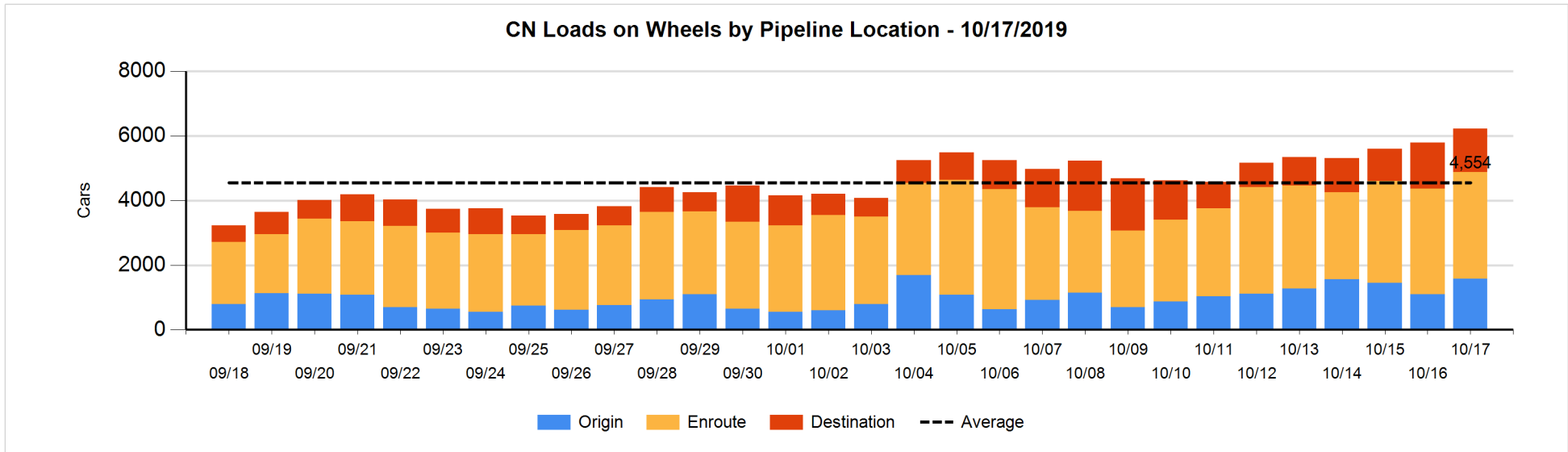


Daily Loads on Wheels By Pipeline Location - 10/17/2019

	E Canada	Prince Rupert	Thunder Bay	USA/MEX	Vancouver	Total
CN						
Origin	12	768	312	31	450	1,573
Enroute	448	1,020	259	223	1,361	3,311
Destination	24	13	145	17	1,136	1,335
	484	1,801	716	271	2,947	6,219
CP						
Origin	1		227	7	927	1,162
Enroute	40		523	57	1,272	1,892
Destination	1		550		671	1,222
	42		1,300	64	2,870	4,276
US Rail / Short Line						
Origin						
Enroute				37		37
Destination				49	15	64
				86	15	101

Change in Daily Loads on Wheels By Pipeline Location - Prior 24 Hours

	E Canada	Prince Rupert	Thunder Bay	USA/MEX	Vancouver	Total
CN						
Origin	-22	359	207	-24	-40	480
Enroute	-17	136	-26	25	-80	38
Destination	12	-146	36	-18	31	-85
	-27	349	217	-17	-89	433
CP						
Origin	-25		113	6	63	157
Enroute	25		-63	-1	-77	-116
Destination	0		-36	-11	81	34
	0		14	-6	67	75
US Rail / Short Line						
Origin						
Enroute				-16		-16
Destination	-1			-2	1	-2
	-1			-18	1	-18

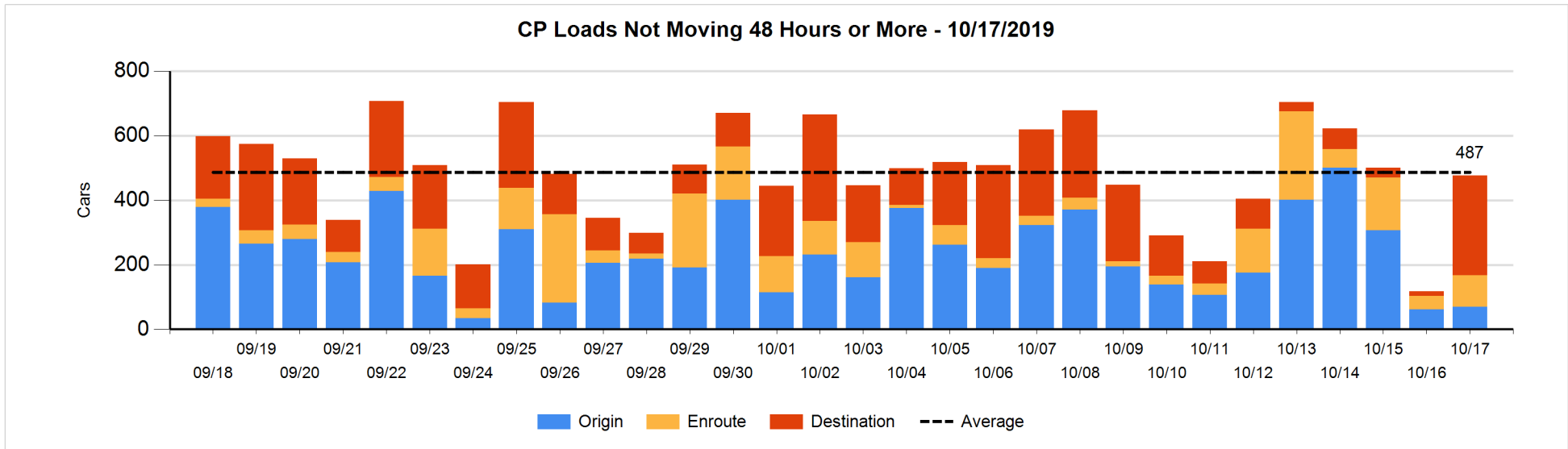
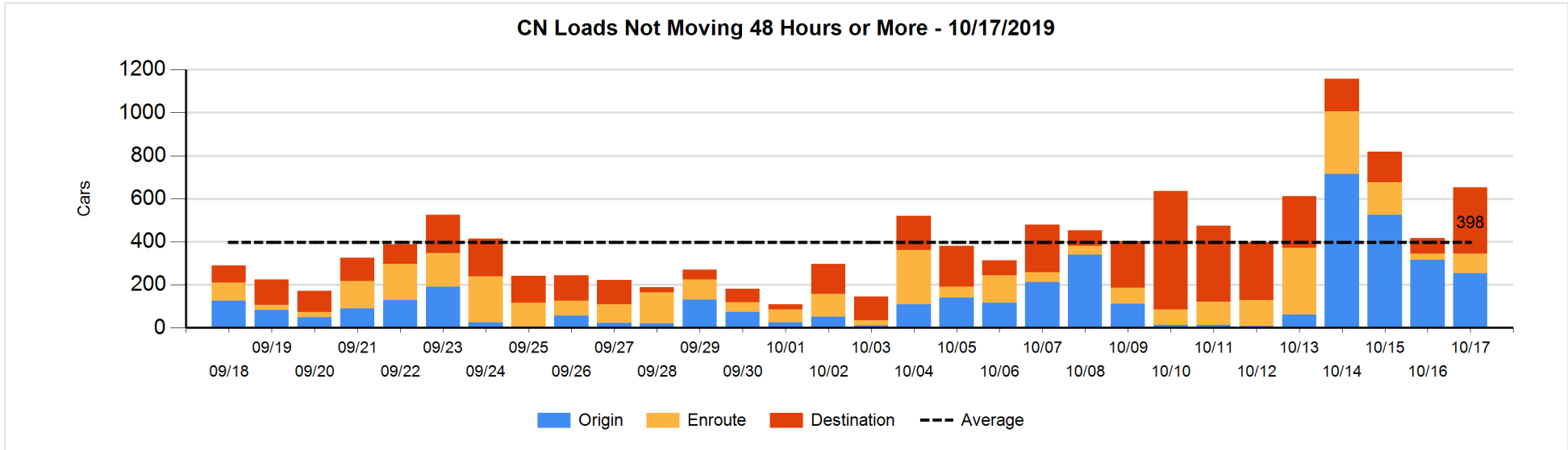


Loads Not Moving 48 Hours or More - 10/17/2019

	E Canada	Prince Rupert	Thunder Bay	USA/MEX	Vancouver	Total
CN						
Origin		205			48	253
Enroute	35	5	4	4	44	92
Destination	9	12	4	4	279	308
	44	222	8	8	371	653
CP						
Origin					69	69
Enroute	7		59	17	16	99
Destination			286		22	308
	7		345	17	107	476
US Rail / Short Line						
Origin						
Enroute				11		11
Destination				27	8	35
				38	8	46

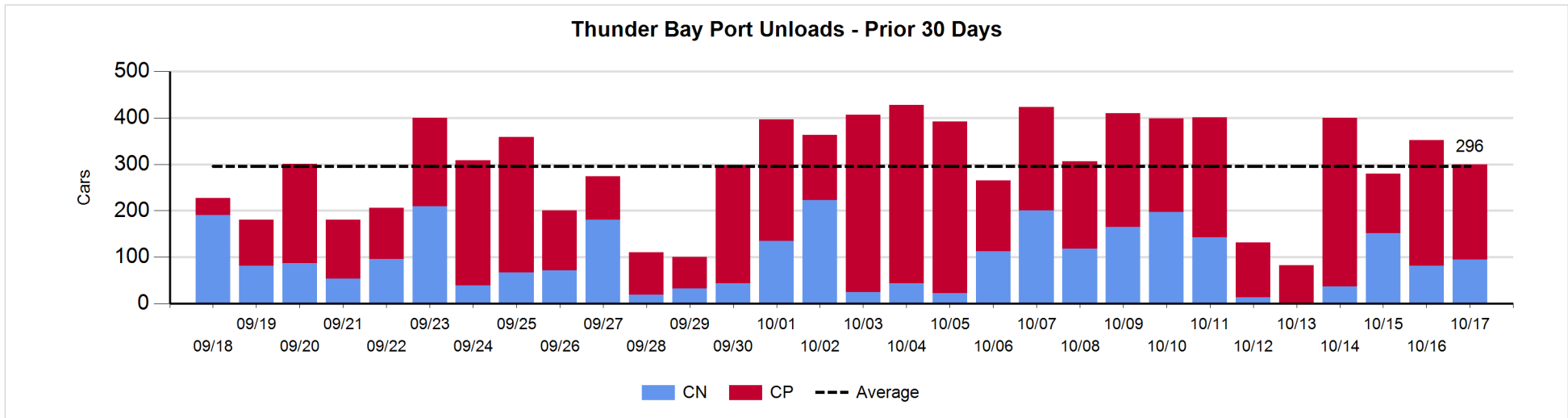
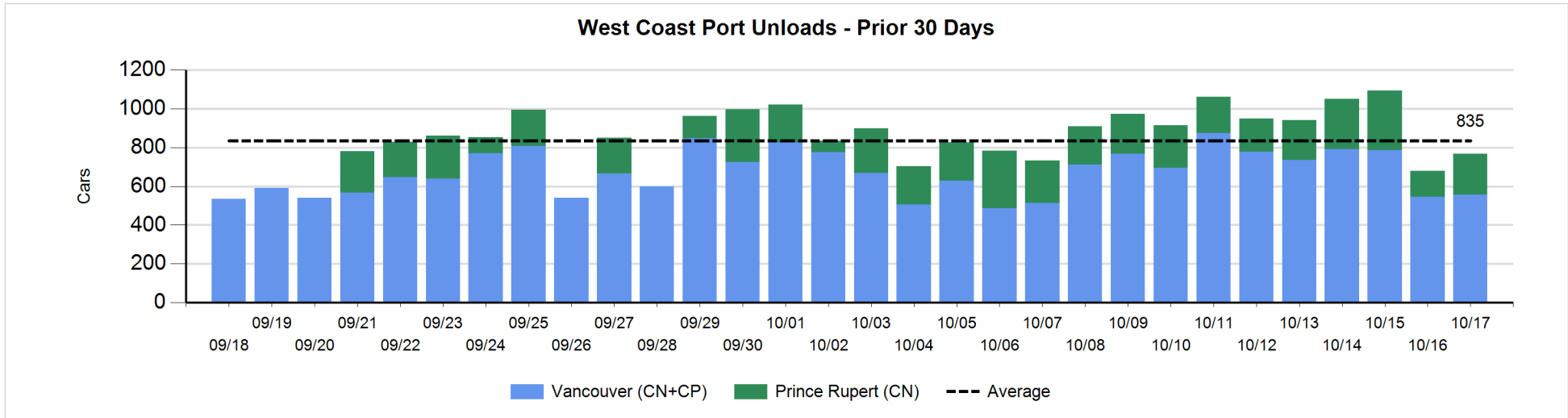
Change in Loads Not Moving 48 Hours or More - 10/17/2019

	E Canada	Prince Rupert	Thunder Bay	USA/MEX	Vancouver	Total
CN						
Origin	-6	-104			47	-63
Enroute	21	0	0	1	41	63
Destination	-1	-3	-3	3	239	235
	14	-107	-3	4	327	235
CP						
Origin					8	8
Enroute	7		56	-2	-5	56
Destination			279		15	294
	7		335	-2	18	358
US Rail / Short Line						
Origin						
Enroute				1		1
Destination	-1			0	6	5
	-1			1	6	6



Port Unloads - 10/17/2019

	Prince Rupert	Vancouver	West Coast Total	Thunder Bay	Total
CN	211	185	396	95	491
CP		372	372	205	577
	211	557	768	300	1,068



Port Terminal Status

Vancouver

Daily Activity for 10/17/2019

	Cars Arrived	Cars Received in Interchange	Cars Delivered in Interchange	Cars Placed for Unloading	Loads on Wheels at Destination As of 10/17/2019
CN	305	108	103	313	1,136
CP	369	103	108	378	671
SRY				2	15

Port Unloads

	10/17	10/16	Week To Date	Last Week
CN	185	287	1,140	2,327
CP	372	258	1,540	2,747
SRY	4	6	14	45

Age Profile of Loaded Cars Waiting Placement for Unloading

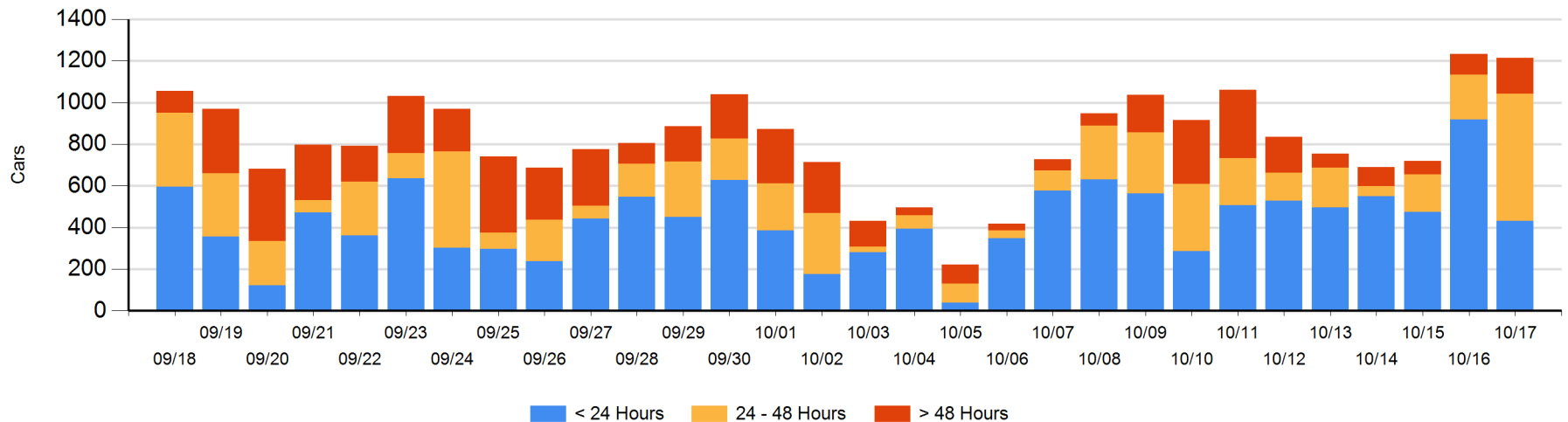
Today

	< 24 Hrs	24 - 48 Hrs	> 48-72 Hrs	> 72 Hrs	Total On Hand
CN	285	276	6	41	608
CP	147	333	113	13	606
SRY					0

Change in Last 24 Hours

	< 24 Hrs	24-48 Hrs	48 - 72 Hrs	> 72 Hrs
CN	-95	185	-37	22
CP	-391	207	106	-16
SRY				

Loaded Cars on Hand Vancouver Waiting for Placement - Last 30 Days All Railways



Port Terminal Status

Prince Rupert

Daily Activity for 10/17/2019

	Cars Arrived	Cars Received in Interchange	Cars Delivered in Interchange	Cars Placed for Unloading	Loads on Wheels at Destination As of 10/17/2019
CN	69			173	13

Port Unloads

	10/17	10/16	Week To Date	Last Week
CN	211	133	908	1,403

Age Profile of Loaded Cars Waiting Placement for Unloading

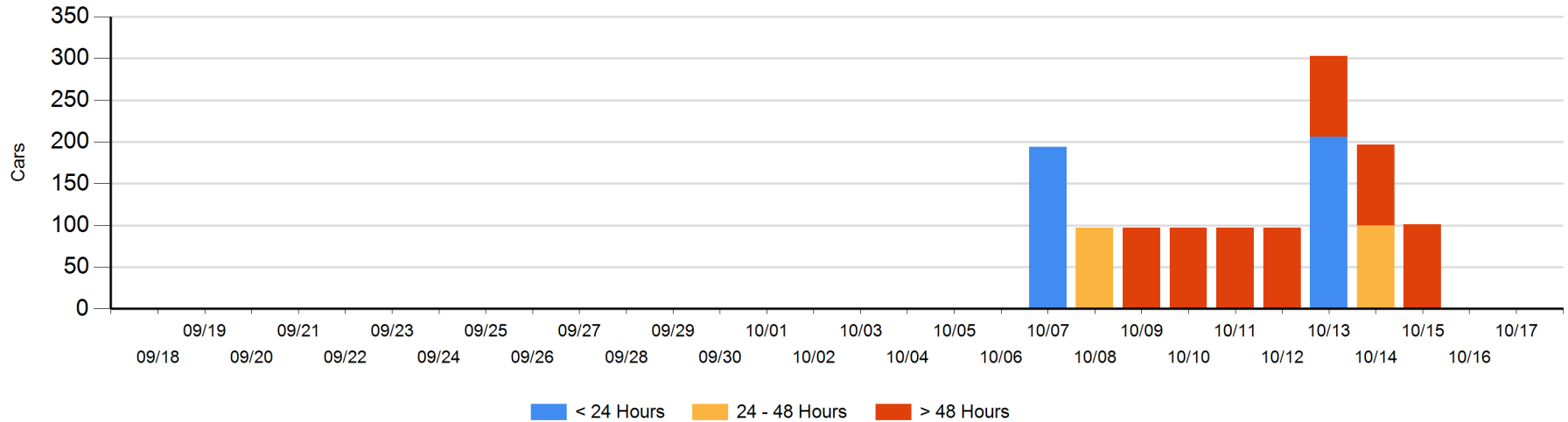
Today

	< 24 Hrs	24 - 48 Hrs	> 48-72 Hrs	> 72 Hrs	Total On Hand
CN					0

Change in Last 24 Hours

	< 24 Hrs	24-48 Hrs	48 - 72 Hrs	> 72 Hrs
CN		-1		

Loaded Cars on Hand Prince Rupert Waiting for Placement - Last 30 Days All Railways



Port Terminal Status

Thunder Bay

Daily Activity for 10/17/2019

	Cars Arrived	Cars Received in Interchange	Cars Delivered in Interchange	Cars Placed for Unloading	Loads on Wheels at Destination As of 10/17/2019
CN	131			80	145
CP	169			102	550

Port Unloads

	10/17	10/16	Week To Date	Last Week
CN	95	81	364	837
CP	205	271	968	1,317

Age Profile of Loaded Cars Waiting Placement for Unloading

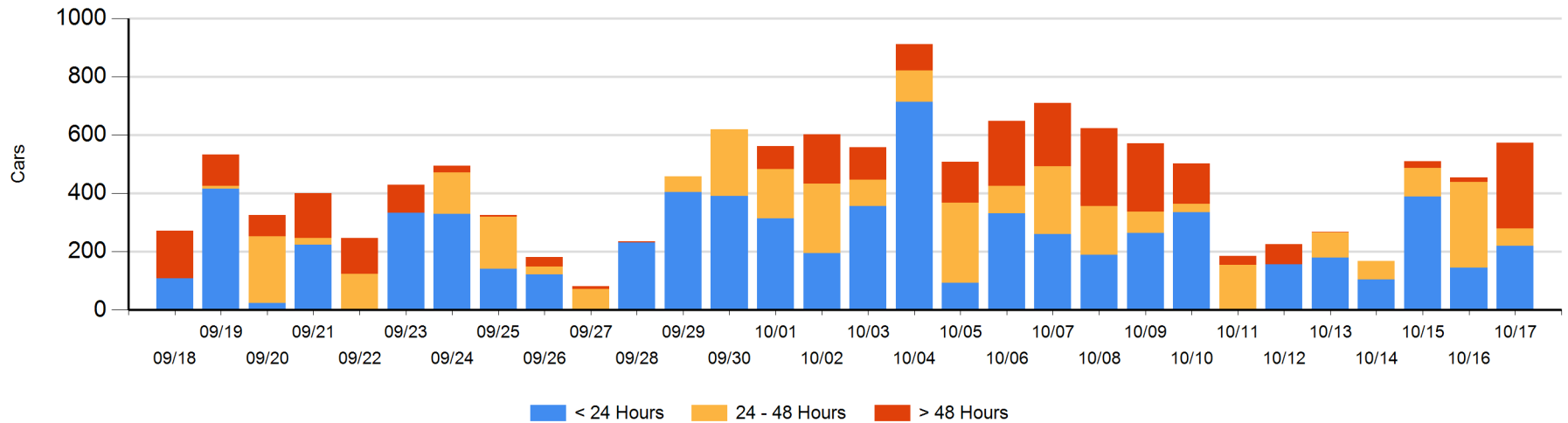
Today

	< 24 Hrs	24 - 48 Hrs	> 48-72 Hrs	> 72 Hrs	Total On Hand
CN	51		2	1	54
CP	169	59	275	16	519

Change in Last 24 Hours

	< 24 Hrs	24-48 Hrs	48 - 72 Hrs	> 72 Hrs
CN	51	-2	1	1
CP	25	-233	265	10

Loaded Cars on Hand Thunder Bay Waiting for Placement - Last 30 Days All Railways



Measurement Definitions

Loads on Wheels	<p>Count of loaded rail cars including all rail cars that have been released loaded at origin and have not been reported by the railway as unloaded at destination.</p> <p>Counts include all rail cars (hopper cars and boxcars) moving within a pipeline.</p>
Loads Not Moving	<p>Loaded rail cars for which the railways have not reported a movement event for 48 hours or more whether the rail car is at origin, enroute or at destination.</p>
Port Unloads	<p>Count of rail cars reported by railways as unloaded at the western port destinations of Vancouver, Prince Rupert and Thunder Bay.</p> <p>Unload counts include all rail cars (hopper cars and boxcars) unloaded by all receivers including major port terminals, transloaders and other receivers.</p>
Cars Arrived	<p>Count of rail cars reported as arrived at the destination railway terminal.</p>
Cars Received in Interchange	<p>Count of rail cars received in interchange by each railway within a destination railway terminal. Interchange activity is tracked for the Vancouver and Thunder Bay pipelines as applicable.</p>
Cars Delivered in Interchange	<p>Count of rail cars delivered in interchange by each railway within a destination railway terminal. Interchange activity is tracked for the Vancouver and Thunder Bay pipelines as applicable.</p>
Cars Placed for Unloading	<p>Count of rail cars reported by the railways as placed loaded at the receiver's facility for unloading.</p>
Loads on Wheels at Destination	<p>Count of rail cars that remain under load within the destination railway terminal including rail cars that have been reported as placed for unloading but not yet reported as unloaded.</p>
Waiting Placement for Unloading	<p>Count of rail cars that have been reported as arrived at the destination railway terminal but not reported as placed for unloading by the railway.</p> <p>For the Ports of Vancouver, Prince Rupert and Thunder Bay the count of rail cars waiting placement for unloading is categorized by age – i.e. the elapsed time from arrival at destination to the current report date.</p>