

SPEED READ

- Following four consecutive days of increasing counts, loads on wheels declined overnight, marking a decline in both CN and CP volumes. On a net basis, volumes decreased due to lower volumes in the Vancouver, E. Canada and USA/MEX corridors offset by higher volumes in the Prince Rupert and Thunder Bay corridors.
- Network fluidity deteriorated overnight, led by an increase in idle car counts on CN by 39% (+470) offset by a decline in idle car counts on CP by 39% (-325). The count of idle cars has increased significantly over the last four days. CN most notably has seen idle car counts more than quadruple over the last 4 days with counts rising above 1,600 - the highest levels seen since spring; this upward trend is consistent with increasing loads on wheels over the same period which have been above 6,200 cars for four consecutive days.
- The total count of cars for 4+ days on both railways increased significantly by 54% (+185) overnight - presently at 528 cars, the highest seen in the last 30 days.
- Week 11 unloads ended behind prior week's performance by 300 unloads, marking reduced unloads at Vancouver and Prince Rupert offset by improved week over week performance at Thunder Bay.

=====

Loads on Wheels

- Loads on wheels declined 4% (-479) overnight, due to lower volumes on both CN and CP - combined total at 11,582 and 26% above the trailing 30-day average.
- On a net basis, the decline in loads on wheels reflects lower volumes in the Vancouver, E. Canada and USA/MEX corridors offset by higher volumes in the Prince Rupert and Thunder Bay corridors.
- CN volumes declined 6% (-466) overnight, with lower volumes across all corridors other than Prince Rupert. System wide CN loads on wheels now at 6,985 and 42% above the trailing 30-day average.
- CP volumes fell 2% (-72) overnight, driven by a decline in traffic in the Vancouver and USA/MEX corridors offset by a rise in volumes in the E. Canada and Thunder Bay corridors. CP system wide loads on wheels now at 4,445 and 7% above the trailing 30-day average.
- Vancouver now at 6,221, declined 7% (-493) overnight, now 28% above the trailing 30-day average.
- The Prince Rupert pipeline currently at 2,075, the highest seen in the last 30 days, rose 2% (+42) overnight, and 41% above the trailing 30-day average.
- Thunder Bay volumes increased for the fourth consecutive day, up 1% (+16) overnight - now at 2,169 and 23% above the trailing 30-day average, with 66% of traffic moving on CP.

Hopper Car Rationing

- No hopper cars were rationed by either CN or CP in week 10.

Loads Not Moving

- **The count of cars not moving for 48+ hours increased 7% (+145) overnight and have now increased for the fourth consecutive day, reflecting higher counts on CN offset by lower counts on CP. Idle car counts currently at 2,192, the highest seen in the last 30 days, and 118% above the trailing 30-day average.**
- CN
 - **The count of idle cars for 48+ hours increased 39% (+470) overnight and have now increased for the fourth consecutive day - presently at 1,684 cars, the highest seen in the last 30 days.**
 - The number of cars idle for 4+ days increased 117% (+206) overnight - presently at 382 cars, the highest seen in the last 30 days.
 - The count of cars not moving for 7+ days increased 31% (+5) overnight - now at 21 cars.

- Vancouver represents 44% of all idle cars.
- In total 68% of all idle cars are dwelling at origin locations.
- CP
 - **CP idle car counts for 48+ hours fell 39% (-325) overnight - currently at 508 cars.**
 - The number of cars idle for 4+ days declined 13% (-21) overnight - currently at 146 cars.
 - The number of cars idle for 7+ days remained unchanged overnight - now at 66 cars.
 - Vancouver accounts for 73% of all idle cars.
 - In total 62% of all idle cars are dwelling at origin locations.

Port Performance

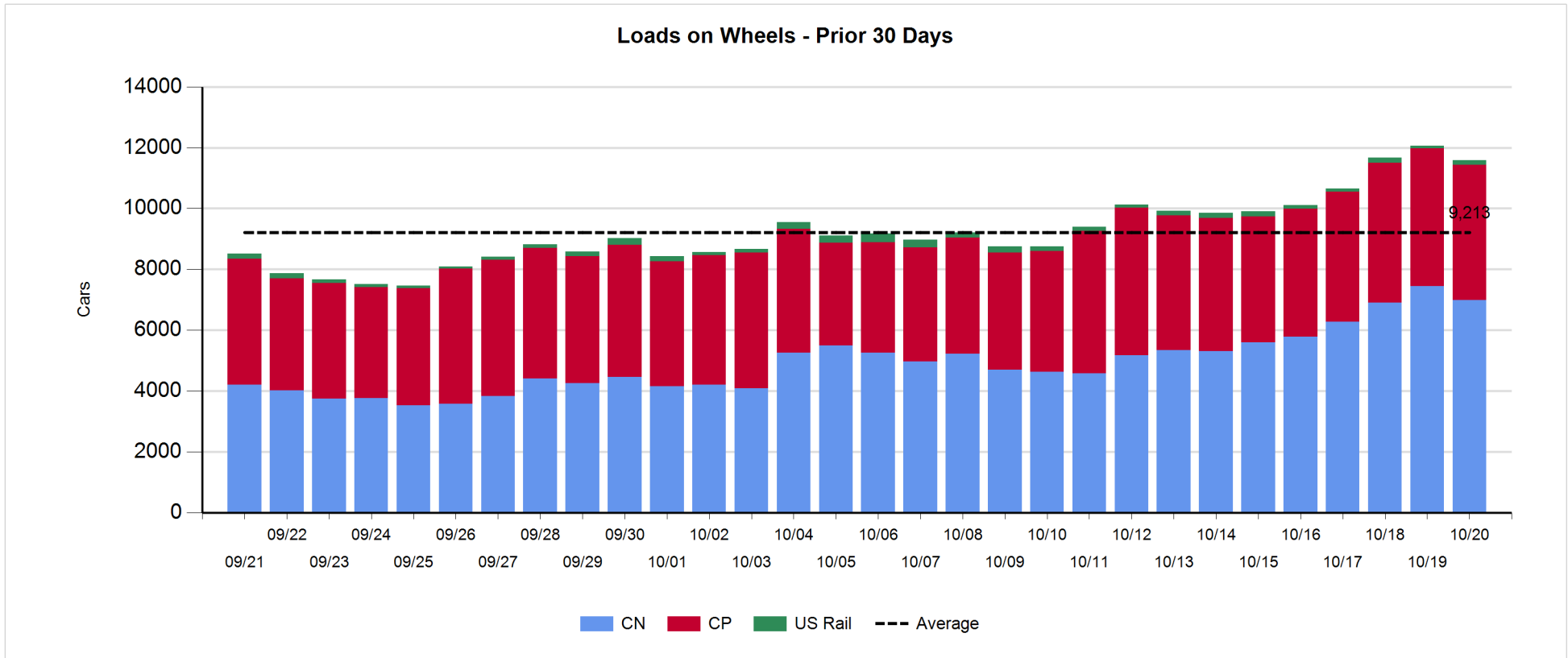
- CN and CP reported a total of 1,257 cars unloaded at the three major ports, 8% above the trailing 30-day average. Week 11 unloads ended behind last week's pace by 300 unloads, marking reduced unloads at Vancouver and Prince Rupert offset by higher unloads at Thunder Bay.
- Vancouver
 - 841 unloads reported by CN and CP at the Port of Vancouver; CN - 343 and CP - 498. Week 11 unloads ended behind last week's performance by more than 150 unloads.
 - There are 1,550 cars on site at Vancouver with more than 500 cars arriving at the port in the last 24 hours.
 - CN and CP have around 1,100 cars in British Columbia en route to Vancouver, with more than 700 cars at Kamloops and west, and 76% of traffic moving on CN.
- Prince Rupert
 - Prince Rupert reported 163 unloads, concluded behind last week's unloads by 150 unloads.
 - Loads on wheels remain above 1,000 cars - currently at 2,075 cars.
 - There are more than 800 cars west of Jasper en route to Prince Rupert.
 - There are more than 100 cars on site at Prince Rupert with more than 100 cars arriving at the port in the last 24 hours.
- Thunder Bay
 - 253 unloads were reported at Thunder Bay yesterday. Week 11 unloads finished ahead of last week's pace by fewer than 50 unloads.
 - There are fewer than 900 cars on site at Thunder Bay with more than 400 cars arriving at the port in the prior 24 hours.
 - There are more than 400 cars en route to Thunder Bay from Winnipeg and east.

Daily Loads on Wheels - 10/20/2019

	E Canada	Prince Rupert	Thunder Bay	USA/MEX	Vancouver	Total
CN	469	2,075	728	387	3,326	6,985
CP	74		1,441	92	2,838	4,445
Short Line					57	57
US Rail				95		95
	543	2,075	2,169	574	6,221	11,582

Change in Loads on Wheels - Prior 24 Hours

	E Canada	Prince Rupert	Thunder Bay	USA/MEX	Vancouver	Total
CN	-64		42	0	-3	-441
CP	29		16	-26	-91	-72
Short Line					39	39
US Rail				20		20
	-35	42	16	-9	-493	-479

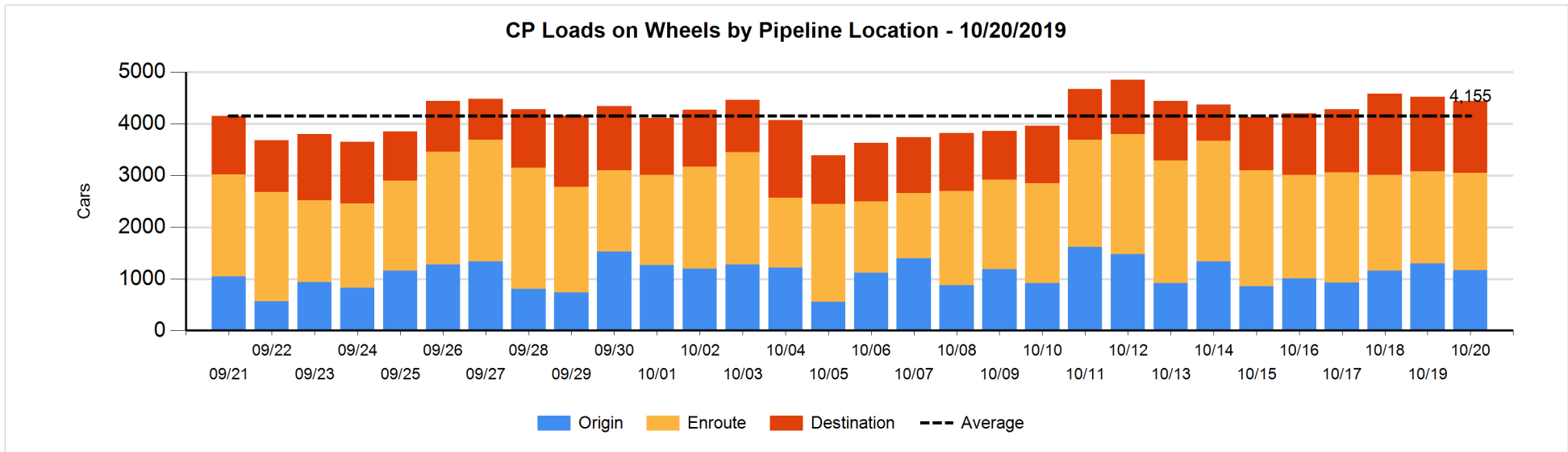
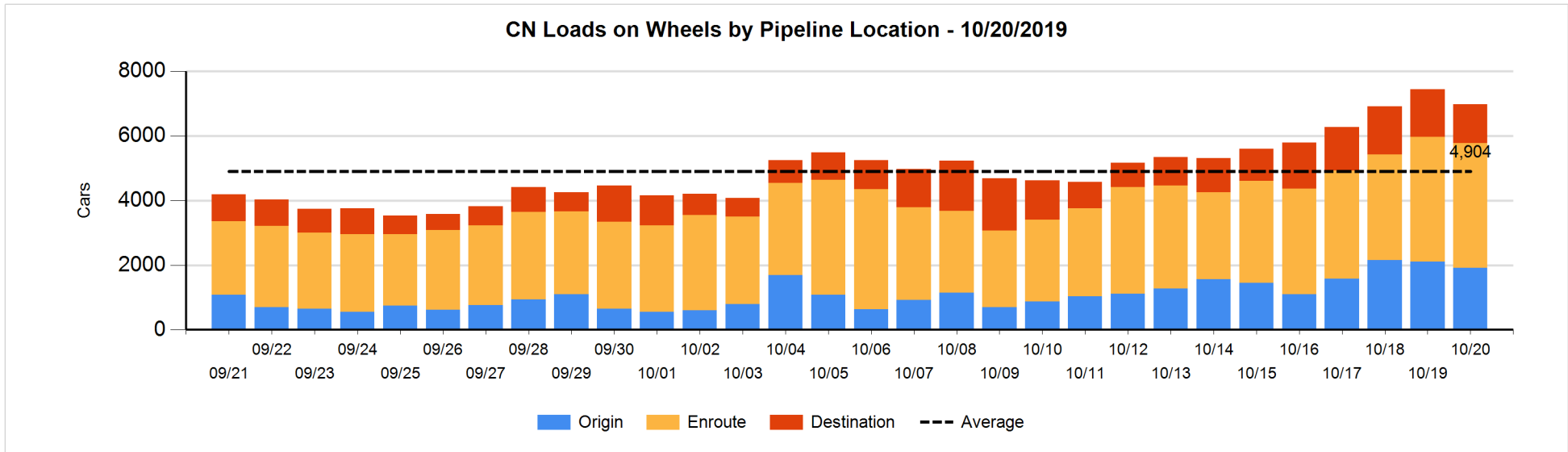


Daily Loads on Wheels By Pipeline Location - 10/20/2019

	E Canada	Prince Rupert	Thunder Bay	USA/MEX	Vancouver	Total
CN						
Origin		918		146	844	1,908
Enroute	405	1,031	396	225	1,804	3,861
Destination	64	126	332	16	678	1,216
	469	2,075	728	387	3,326	6,985
CP						
Origin	33		396		742	1,171
Enroute	41		492	64	1,285	1,882
Destination			553	28	811	1,392
	74		1,441	92	2,838	4,445
US Rail / Short Line						
Origin						
Enroute				72		72
Destination				23	57	80
				95	57	152

Change in Daily Loads on Wheels By Pipeline Location - Prior 24 Hours

	E Canada	Prince Rupert	Thunder Bay	USA/MEX	Vancouver	Total
CN						
Origin	-25	201	-83	-8	-281	-196
Enroute	17	-110	-21	5	106	-3
Destination	-56	-49	104	0	-266	-267
	-64	42	0	-3	-441	-466
CP						
Origin	29		19	-48	-127	-127
Enroute	0		-61	22	136	97
Destination			58	0	-100	-42
	29		16	-26	-91	-72
US Rail / Short Line						
Origin						
Enroute				28		28
Destination				-8	39	31
				20	39	59

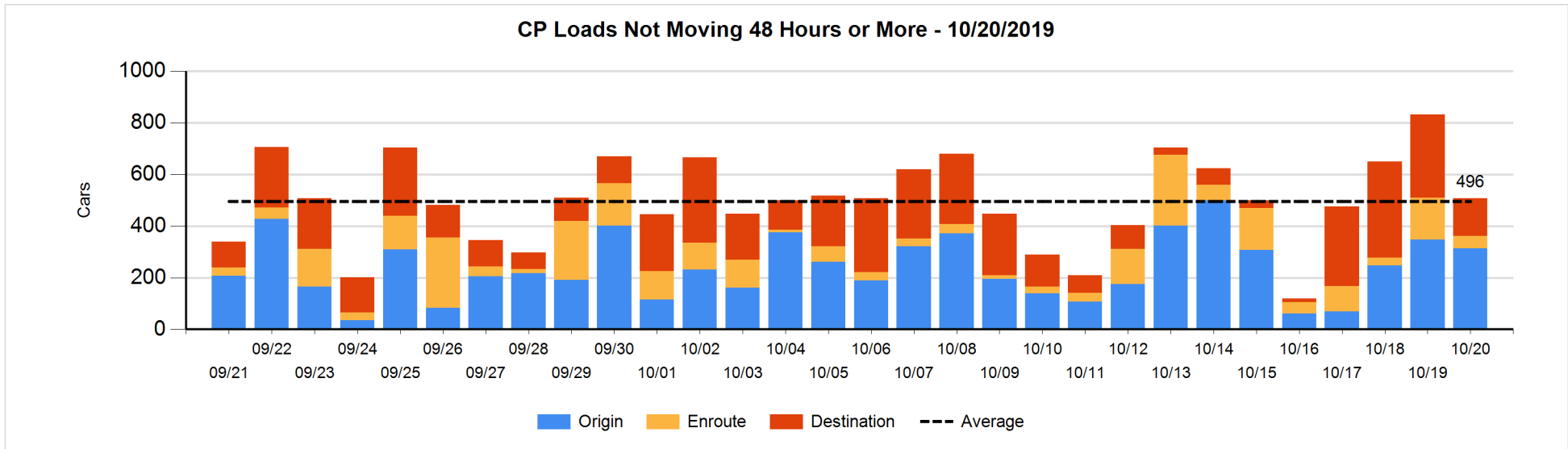
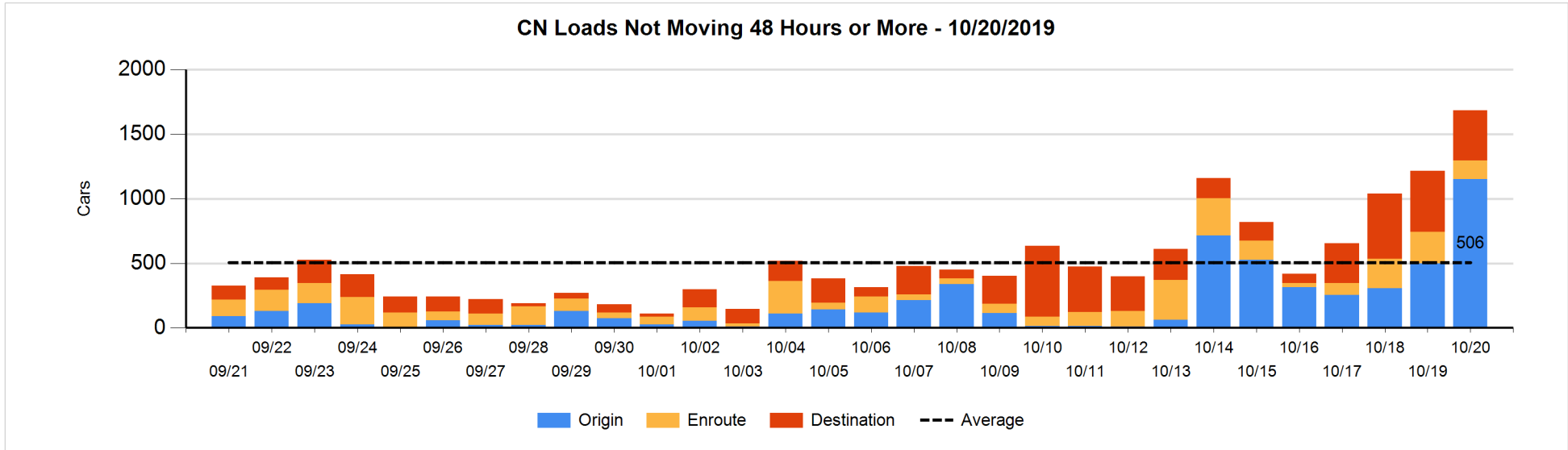


Loads Not Moving 48 Hours or More - 10/20/2019

	E Canada	Prince Rupert	Thunder Bay	USA/MEX	Vancouver	Total
CN						
Origin		605		95	451	1151
Enroute	81	6	1		56	144
Destination	53	7	80	14	235	389
	134	618	81	109	742	1684
CP						
Origin			15		299	314
Enroute			1	1	46	48
Destination			121		25	146
			137	1	370	508
US Rail / Short Line						
Origin						
Enroute				14		14
Destination				22	14	36
				36	14	50

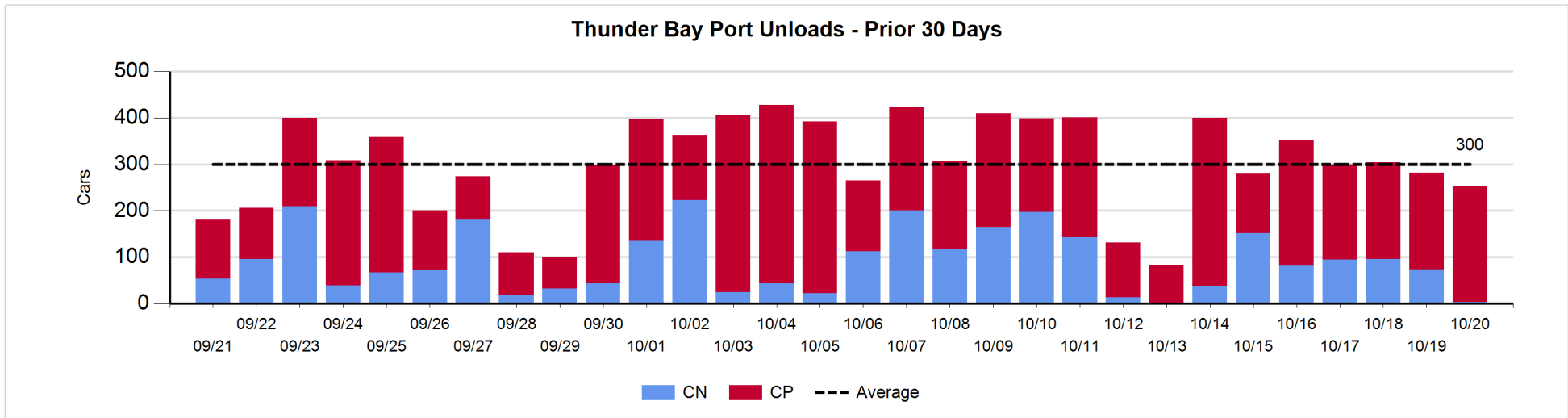
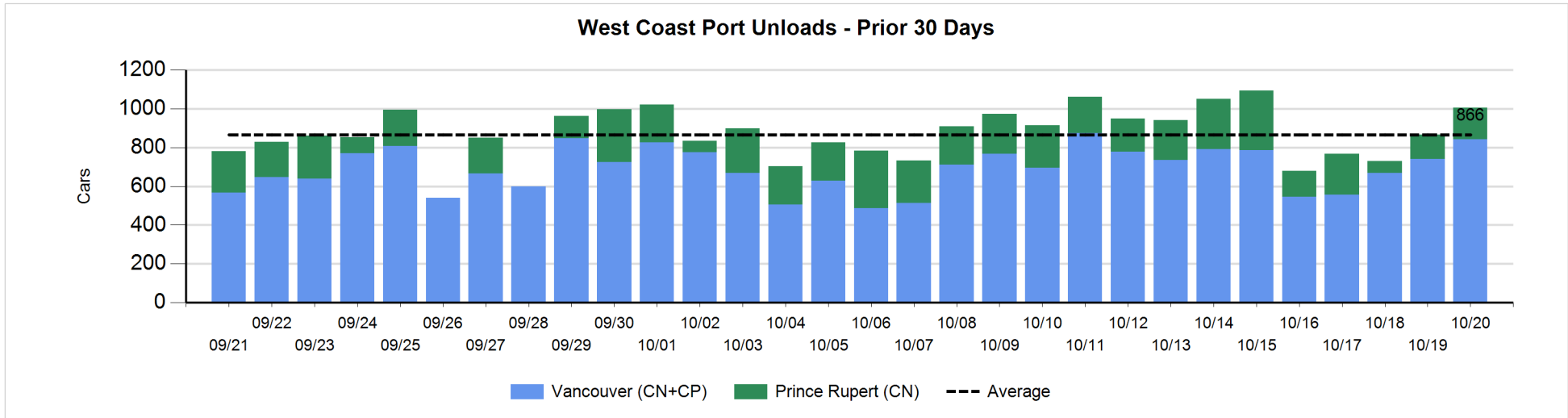
Change in Loads Not Moving 48 Hours or More - 10/20/2019

	E Canada	Prince Rupert	Thunder Bay	USA/MEX	Vancouver	Total
CN						
Origin		305		95	251	651
Enroute	-3	3	0	-1	-98	-99
Destination	43	0	50	2	-177	-82
	40	308	50	96	-24	470
CP						
Origin			15		-49	-34
Enroute	-1		0	1	-114	-114
Destination			-64		-113	-177
	-1		-49	1	-276	-325
US Rail / Short Line						
Origin						
Enroute				1		1
Destination				-1	7	6
				0	7	7



Port Unloads - 10/20/2019

	Prince Rupert	Vancouver	West Coast Total	Thunder Bay	Total
CN	163	343	506	3	509
CP		498	498	250	748
	163	841	1,004	253	1,257



Port Terminal Status

Vancouver

Daily Activity for 10/20/2019

	Cars Arrived	Cars Received in Interchange	Cars Delivered in Interchange	Cars Placed for Unloading	Loads on Wheels at Destination As of 10/20/2019
CN	95	117	140	302	678
CP	419	101	120	386	811
SRY		42			57

Port Unloads

	10/20	10/19	Week To Date	Last Week
CN	343	269	2,013	2,327
CP	498	472	2,918	2,747
SRY	2	2	24	45

Age Profile of Loaded Cars Waiting Placement for Unloading

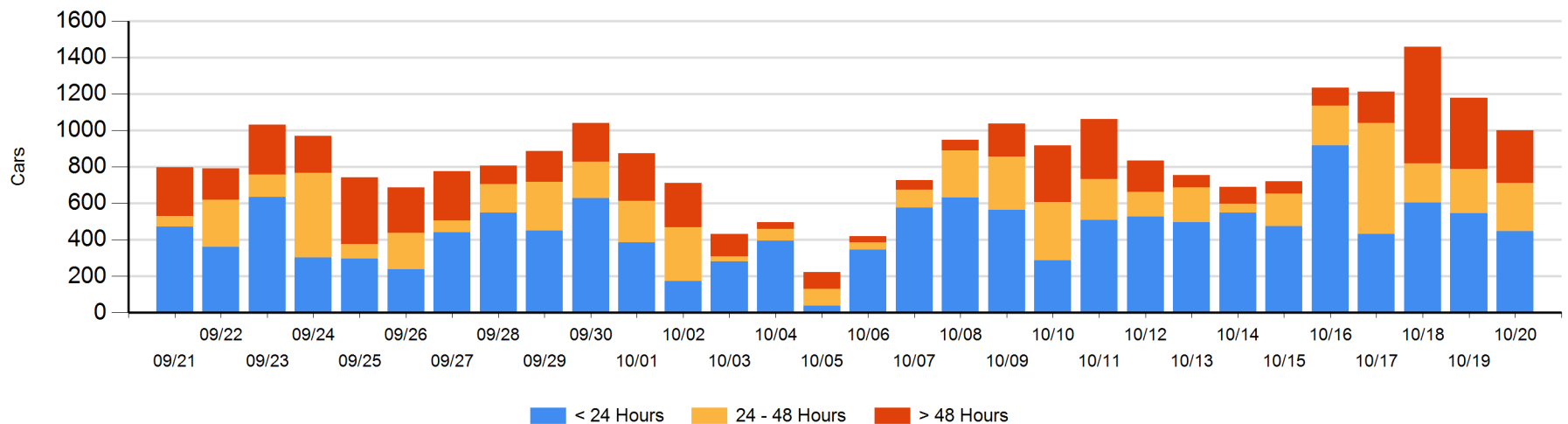
Today

	< 24 Hrs	24 - 48 Hrs	> 48-72 Hrs	> 72 Hrs	Total On Hand
CN	74	67	127	88	356
CP	374	197	33	39	643
SRY					0

Change in Last 24 Hours

	< 24 Hrs	24-48 Hrs	48 - 72 Hrs	> 72 Hrs
CN	-109	-133	57	-9
CP	12	155	-3	-149
SRY				

Loaded Cars on Hand Vancouver Waiting for Placement - Last 30 Days All Railways



Port Terminal Status

Prince Rupert

Daily Activity for 10/20/2019

	Cars Arrived	Cars Received in Interchange	Cars Delivered in Interchange	Cars Placed for Unloading	Loads on Wheels at Destination As of 10/20/2019
CN	114			114	126

Port Unloads

	10/20	10/19	Week To Date	Last Week
CN	163	126	1,258	1,403

Age Profile of Loaded Cars Waiting Placement for Unloading

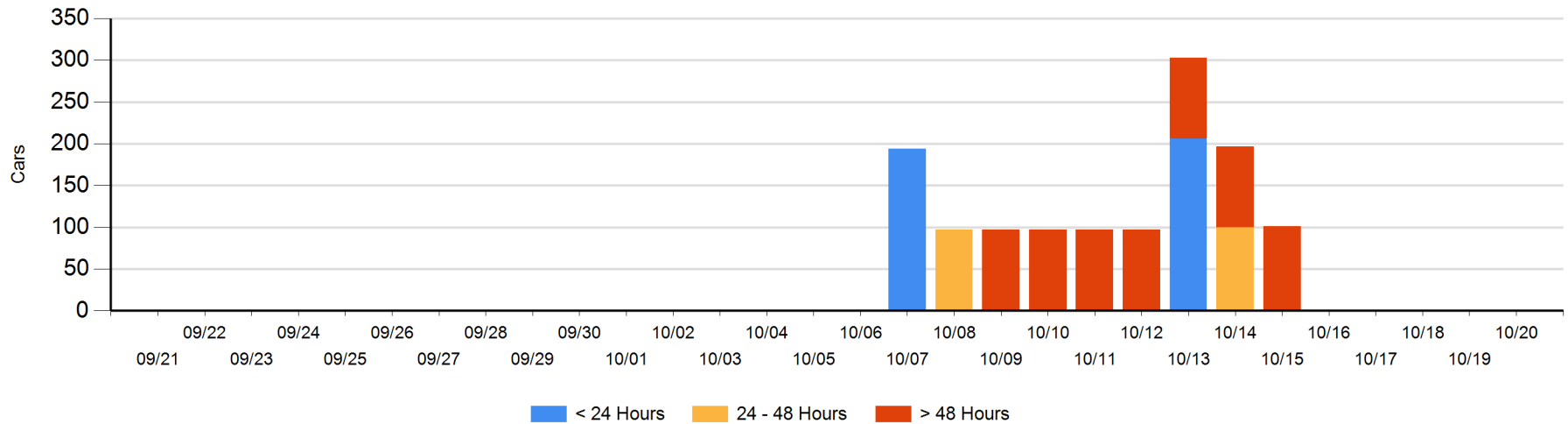
Today

	< 24 Hrs	24 - 48 Hrs	> 48-72 Hrs	> 72 Hrs	Total On Hand
CN		1			1

Change in Last 24 Hours

	< 24 Hrs	24-48 Hrs	48 - 72 Hrs	> 72 Hrs
CN	-1	1		

Loaded Cars on Hand Prince Rupert Waiting for Placement - Last 30 Days All Railways



Port Terminal Status

Thunder Bay

Daily Activity for 10/20/2019

	Cars Arrived	Cars Received in Interchange	Cars Delivered in Interchange	Cars Placed for Unloading	Loads on Wheels at Destination As of 10/20/2019
CN	104	3		81	332
CP	312		3	244	553

Port Unloads

	10/20	10/19	Week To Date	Last Week
CN	3	74	537	837
CP	250	208	1,634	1,317

Age Profile of Loaded Cars Waiting Placement for Unloading

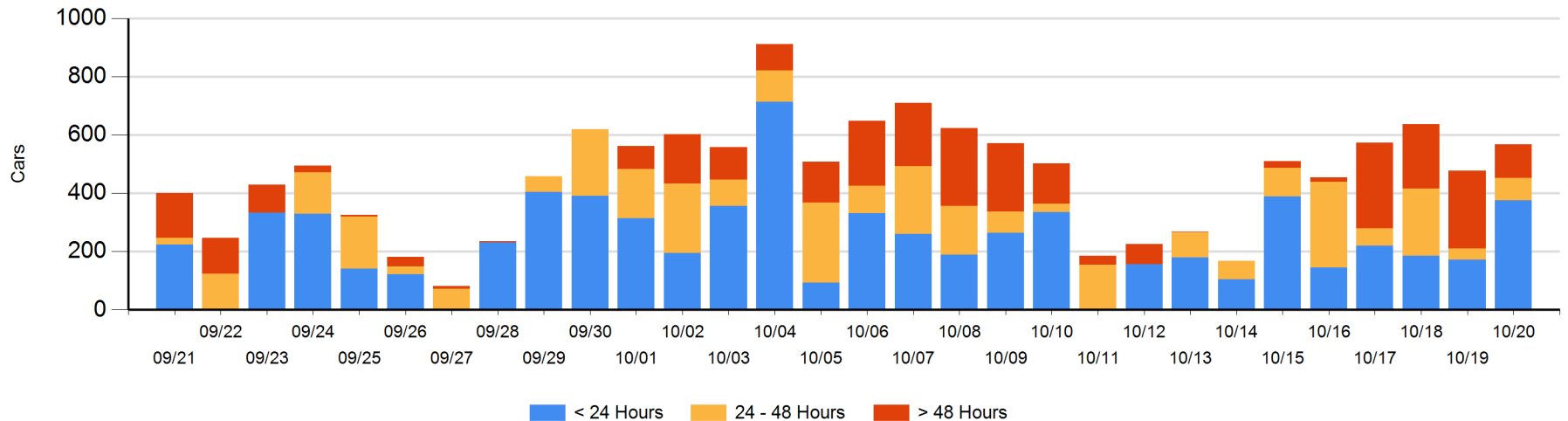
Today

	< 24 Hrs	24 - 48 Hrs	> 48-72 Hrs	> 72 Hrs	Total On Hand
CN	64	61	10	3	138
CP	312	15	21	82	430

Change in Last 24 Hours

	< 24 Hrs	24-48 Hrs	48 - 72 Hrs	> 72 Hrs
CN	-38	51	10	0
CP	242	-13	-138	-23

Loaded Cars on Hand Thunder Bay Waiting for Placement - Last 30 Days All Railways



Measurement Definitions

Loads on Wheels	<p>Count of loaded rail cars including all rail cars that have been released loaded at origin and have not been reported by the railway as unloaded at destination.</p> <p>Counts include all rail cars (hopper cars and boxcars) moving within a pipeline.</p>
Loads Not Moving	<p>Loaded rail cars for which the railways have not reported a movement event for 48 hours or more whether the rail car is at origin, enroute or at destination.</p>
Port Unloads	<p>Count of rail cars reported by railways as unloaded at the western port destinations of Vancouver, Prince Rupert and Thunder Bay.</p> <p>Unload counts include all rail cars (hopper cars and boxcars) unloaded by all receivers including major port terminals, transloaders and other receivers.</p>
Cars Arrived	<p>Count of rail cars reported as arrived at the destination railway terminal.</p>
Cars Received in Interchange	<p>Count of rail cars received in interchange by each railway within a destination railway terminal. Interchange activity is tracked for the Vancouver and Thunder Bay pipelines as applicable.</p>
Cars Delivered in Interchange	<p>Count of rail cars delivered in interchange by each railway within a destination railway terminal. Interchange activity is tracked for the Vancouver and Thunder Bay pipelines as applicable.</p>
Cars Placed for Unloading	<p>Count of rail cars reported by the railways as placed loaded at the receiver's facility for unloading.</p>
Loads on Wheels at Destination	<p>Count of rail cars that remain under load within the destination railway terminal including rail cars that have been reported as placed for unloading but not yet reported as unloaded.</p>
Waiting Placement for Unloading	<p>Count of rail cars that have been reported as arrived at the destination railway terminal but not reported as placed for unloading by the railway.</p> <p>For the Ports of Vancouver, Prince Rupert and Thunder Bay the count of rail cars waiting placement for unloading is categorized by age – i.e. the elapsed time from arrival at destination to the current report date.</p>