

SPEED READ

- Loads on wheels rose marginally overnight, reflecting higher CP volumes offset by a decline in CN volumes. On a net basis, volumes rose due to higher traffic across all corridors other than Prince Rupert.
- Network fluidity deteriorated overnight, led by an increase in idle car counts on both CN and CP by 37% (+628) and 29% (+147), respectively. CN counts have now risen from less than 500 to more than 2,300 in the last five days with 90% of idle cars in the Vancouver and Prince Rupert pipelines and 65% of those cars (1300) currently dwelling at origin.
- The total count of cars for 4+ days on both railways increased 39% (+207) overnight and have now increased for the third consecutive day - currently at 735 cars, the highest seen in the last 30 days.
- One day in Week 12 unloads now behind prior week's performance by fewer than 200 unloads, reflecting lower unloads at Vancouver and Thunder Bay offset by improved week over week performance at Prince Rupert.

Loads on Wheels

- Loads on wheels rose marginally by 1% (+162) overnight, due to higher traffic on CP offset by lower traffic on CN - combined total at 11,875 and 27% above the trailing 30-day average.
- On a net basis, the increase in loads on wheels reflects higher traffic across all corridors other than Prince Rupert.
- CN volumes decreased 5% (-361) overnight, with lower traffic across all corridors other than E. Canada. System wide CN loads on wheels currently at 6,624 and 33% above the trailing 30-day average.
- CP volumes increased significantly by 12% (+534) overnight, driven by an increase in volumes across all corridors other than E. Canada. CP system wide loads on wheels currently at 5,110, the highest seen in the last 30 days, and 22% above the trailing 30-day average.
- Vancouver currently at 6,380, increased slightly by 1% (+35) overnight, now 30% above the trailing 30-day average.
- The Prince Rupert pipeline currently at 1,877, fell 10% (-198) overnight, and 25% above the trailing 30-day average.
- Thunder Bay volumes increased significantly by 11% (+235) overnight and have now increased for the fifth consecutive day - currently at 2,411, the highest seen in the last 30 days, and 35% above the trailing 30-day average, with 76% of traffic moving on CP.

Hopper Car Rationing

- No hopper cars were rationed by either CN or CP in week 10.

Loads Not Moving

- The count of cars not moving for 48+ hours increased 35% (+775) overnight and have now increased for the fifth consecutive day, reflecting higher counts on both CN and CP. Idle car counts currently at 2,967, the highest seen in the last 30 days, and 175% above the trailing 30-day average.
- CN
 - The count of idle cars for 48+ hours increased for the fifth consecutive day, up 37% (+628) overnight - currently at 2,312 cars, the highest seen in the last 30 days.
 - The number of cars idle for 4+ days rose for the third consecutive day, up 43% (+166) overnight - now at 548 cars, the highest seen in the last 30 days.
 - The count of cars not moving for 7+ days increased 19% (+4) overnight - presently at 25 cars.
 - Vancouver represents 61% of all idle cars.
 - In total 58% of all idle cars are dwelling at origin locations.

- CP
 - **CP idle car counts for 48+ hours rose 29% (+147) overnight - currently at 655 cars.**
 - The number of cars idle for 4+ days increased 28% (+41) overnight - presently at 187 cars.
 - The number of cars idle for 7+ days fell 5% (-3) overnight - presently at 63 cars.
 - Vancouver accounts for 74% of all idle cars.
 - In total 38% of all idle cars are dwelling at origin locations.

Port Performance

- CN and CP reported a total of 1,257 cars unloaded at the three major ports, 7% above the trailing 30-day average. One day in Week 12 unloads now behind last week's pace by less than 200 unloads, reflecting lower unloads at Vancouver and Thunder Bay offset by higher unloads at Prince Rupert.
- Vancouver
 - 631 unloads reported by CN and CP at the Port of Vancouver; CN - 216 and CP - 415. One day in Week 12 unloads are tracking behind last week's performance by 150 unloads.
 - There are 1,800 cars on site at Vancouver with approximately 900 cars arriving at the port in the last 24 hours.
 - CN and CP have 1,350 cars in British Columbia en route to Vancouver, with more than 650 cars at Kamloops and west, and 58% of traffic moving on CN.
- Prince Rupert
 - Prince Rupert reported 302 unloads, now ahead of last week's unloads after one day by 50 unloads.
 - Loads on wheels remain above 1,000 cars - currently at 1,877 cars.
 - There are more than 500 cars west of Jasper en route to Prince Rupert.
 - There are more than 100 cars on site at Prince Rupert with 300 cars arriving at the port in the last 24 hours.
- Thunder Bay
 - 324 unloads were reported at Thunder Bay yesterday. One day in Week 12 unloads are tracking behind last week's pace by more than 50 unloads.
 - There are 1,300 cars on site at Thunder Bay with 750 cars arriving at the port in the prior 24 hours.
 - There are about 150 cars en route to Thunder Bay from Winnipeg and east.

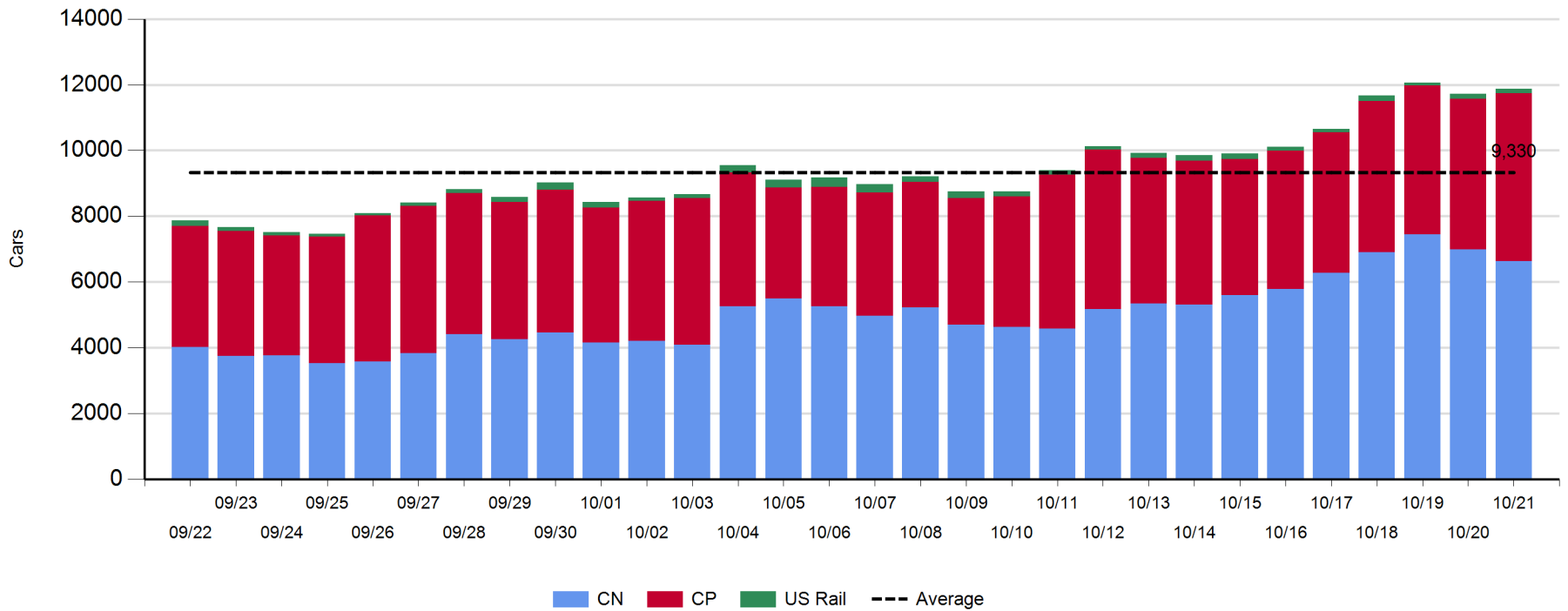
Daily Loads on Wheels - 10/21/2019

	E Canada	Prince Rupert	Thunder Bay	USA/MEX	Vancouver	Total
CN	513	1,877	588	365	3,281	6,624
CP	73		1,823	166	3,048	5,110
Short Line					51	51
US Rail				90		90
	586	1,877	2,411	621	6,380	11,875

Change in Loads on Wheels - Prior 24 Hours

	E Canada	Prince Rupert	Thunder Bay	USA/MEX	Vancouver	Total
CN	44	-198	-140	-22	-45	-361
CP	-1		375	74	86	534
Short Line					-6	-6
US Rail				-5		-5
	43	-198	235	47	35	162

Loads on Wheels - Prior 30 Days

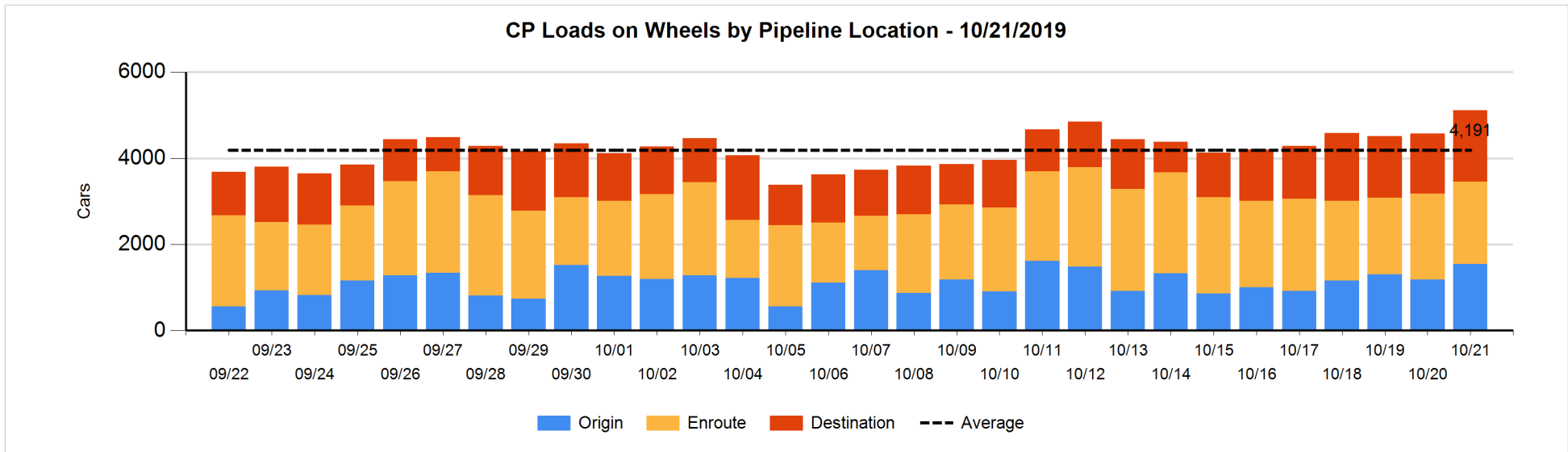
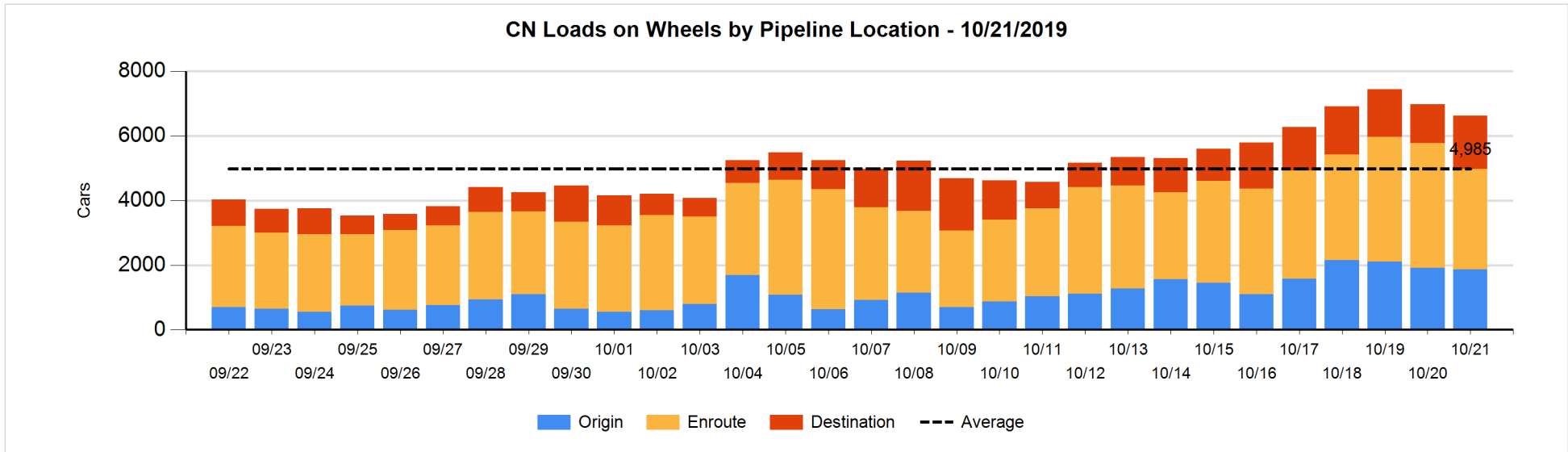


Daily Loads on Wheels By Pipeline Location - 10/21/2019

	E Canada	Prince Rupert	Thunder Bay	USA/MEX	Vancouver	Total
CN						
Origin	115	716	4	55	978	1,868
Enroute	318	1,041	91	285	1,367	3,102
Destination	80	120	493	25	936	1,654
	513	1,877	588	365	3,281	6,624
CP						
Origin	33		590	52	872	1,547
Enroute	35		416	86	1,366	1,903
Destination	5		817	28	810	1,660
	73		1,823	166	3,048	5,110
US Rail / Short Line						
Origin						
Enroute				66		66
Destination				24	51	75
				90	51	141

Change in Daily Loads on Wheels By Pipeline Location - Prior 24 Hours

	E Canada	Prince Rupert	Thunder Bay	USA/MEX	Vancouver	Total
CN						
Origin	115	-202	4	-91	134	-40
Enroute	-87	10	-305	60	-437	-759
Destination	16	-6	161	9	258	438
	44	-198	-140	-22	-45	-361
CP						
Origin	0		188	52	130	370
Enroute	-6		-77	22	-43	-104
Destination	5		264	0	-1	268
	-1		375	74	86	534
US Rail / Short Line						
Origin						
Enroute				-6		-6
Destination				1	-6	-5
				-5	-6	-11

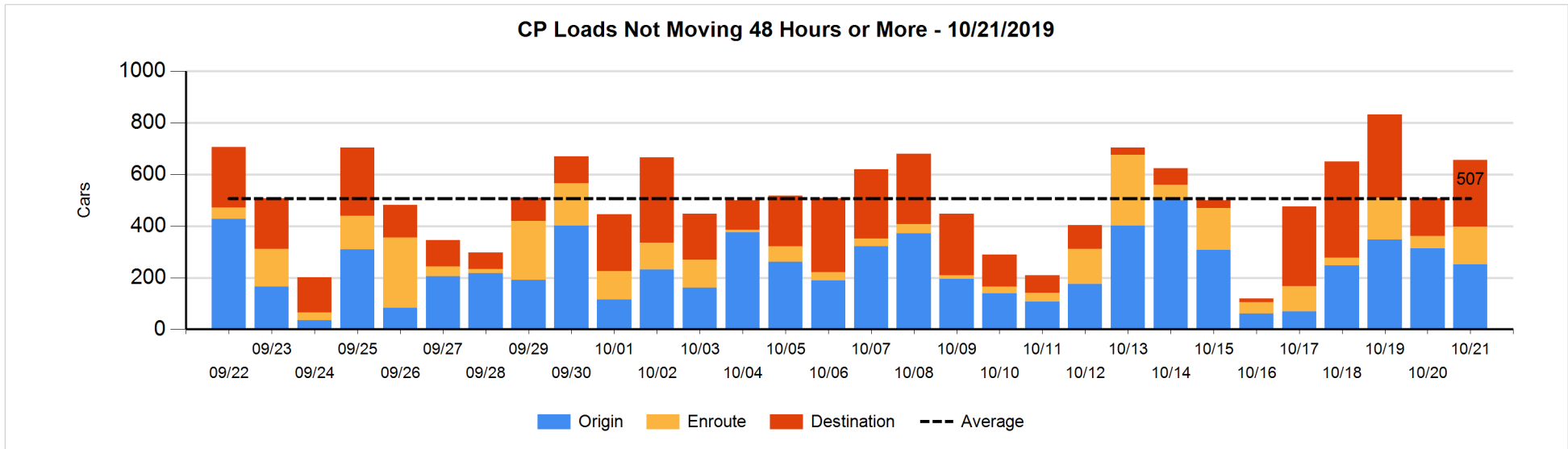
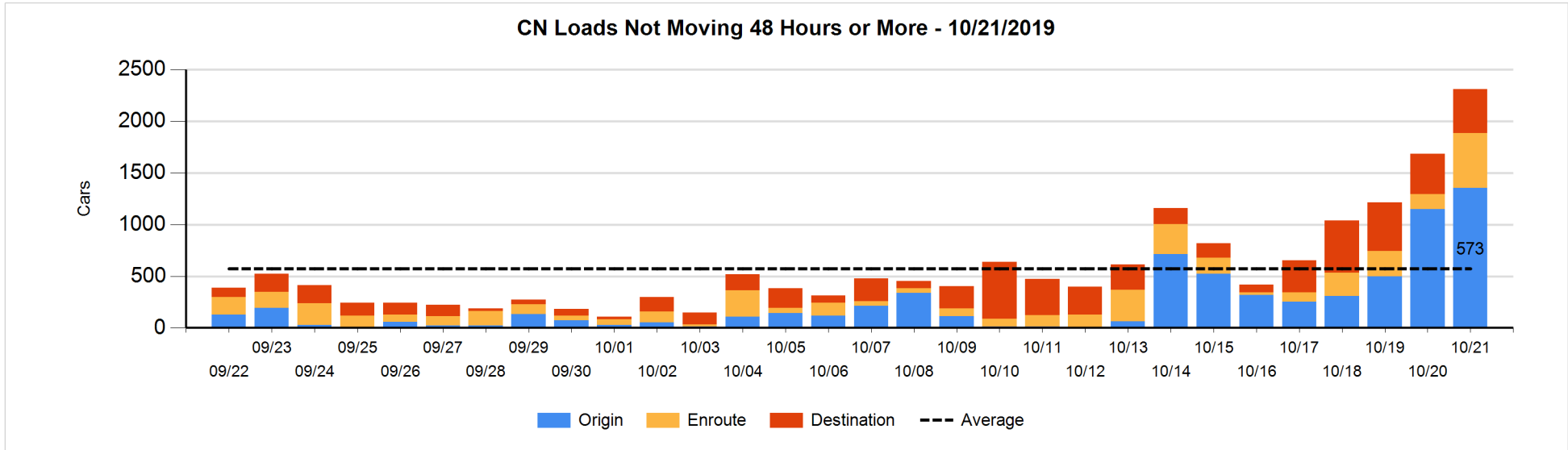


Loads Not Moving 48 Hours or More - 10/21/2019

	E Canada	Prince Rupert	Thunder Bay	USA/MEX	Vancouver	Total
CN						
Origin		515		50	787	1352
Enroute	65	161	1	8	297	532
Destination	21	3	78	7	319	428
	86	679	79	65	1403	2312
CP						
Origin	4		15		232	251
Enroute	6		18	2	121	147
Destination			96	28	133	257
	10		129	30	486	655
US Rail / Short Line						
Origin						
Enroute				13		13
Destination				19	8	27
				32	8	40

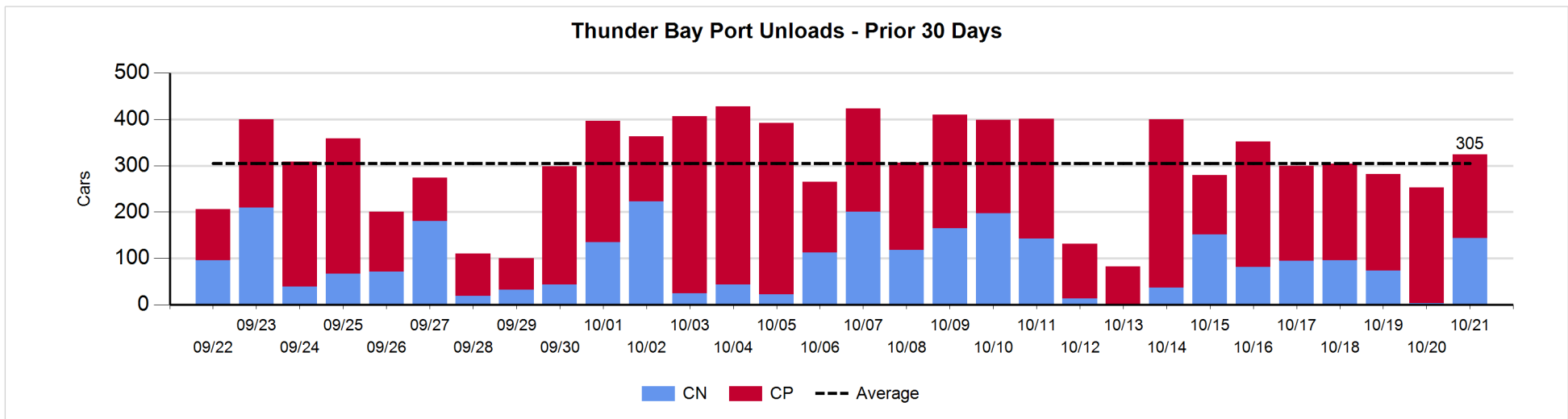
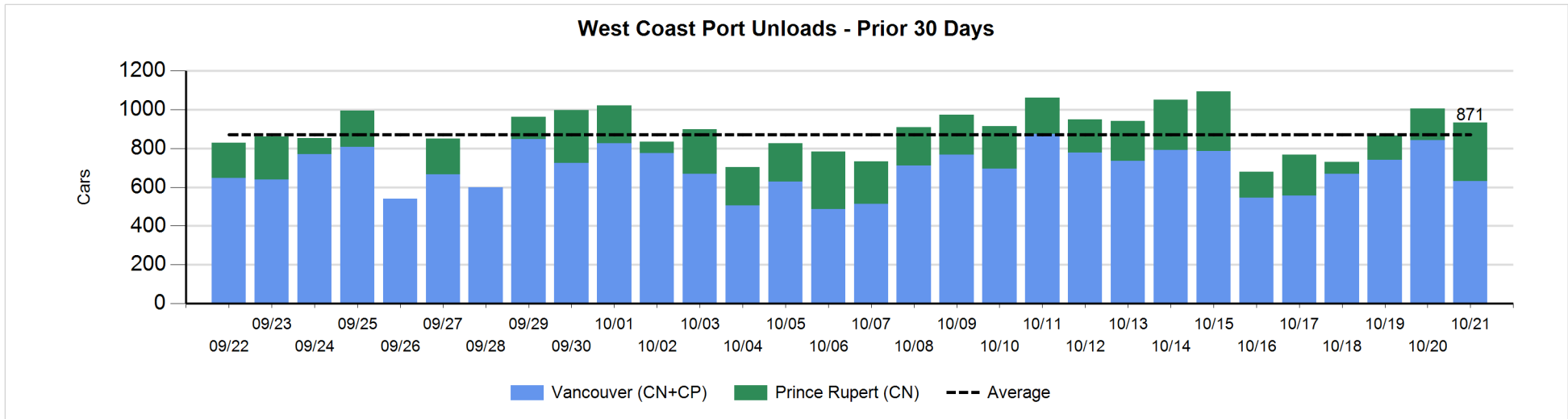
Change in Loads Not Moving 48 Hours or More - 10/21/2019

	E Canada	Prince Rupert	Thunder Bay	USA/MEX	Vancouver	Total
CN						
Origin		-90		-45	336	201
Enroute	-16	155	0	8	241	388
Destination	-32	-4	-2	-7	84	39
	-48	61	-2	-44	661	628
CP						
Origin	4		0		-67	-63
Enroute	6		17	1	75	99
Destination			-25	28	108	111
	10		-8	29	116	147
US Rail / Short Line						
Origin						
Enroute				-1		-1
Destination				-3	-6	-9
				-4	-6	-10



Port Unloads - 10/21/2019

	Prince Rupert	Vancouver	West Coast Total	Thunder Bay	Total
CN	302	216	518	144	662
CP		415	415	180	595
	302	631	933	324	1,257



Port Terminal Status

Vancouver

Daily Activity for 10/21/2019

	Cars Arrived	Cars Received in Interchange	Cars Delivered in Interchange	Cars Placed for Unloading	Loads on Wheels at Destination As of 10/21/2019
CN	502	16	50	321	936
CP	386	50	21	398	810
SRY	1	5		7	51

Port Unloads

	10/21	10/20	Week To Date	Last Week
CN	216	343	216	2,013
CP	415	498	415	2,918
SRY	7	2	7	24

Age Profile of Loaded Cars Waiting Placement for Unloading

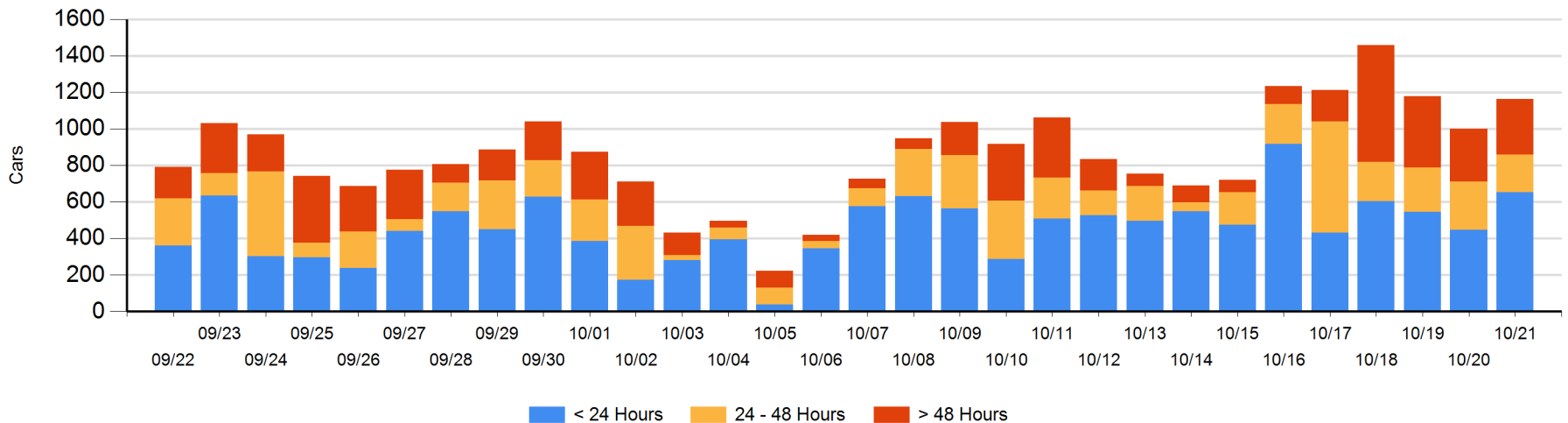
Today

	< 24 Hrs	24 - 48 Hrs	> 48-72 Hrs	> 72 Hrs	Total On Hand
CN	268	25	46	75	414
CP	386	180	138	45	749
SRY					0

Change in Last 24 Hours

	< 24 Hrs	24-48 Hrs	48 - 72 Hrs	> 72 Hrs
CN	194	-42	-81	-13
CP	12	-17	105	6
SRY				

Loaded Cars on Hand Vancouver Waiting for Placement - Last 30 Days All Railways



Port Terminal Status

Prince Rupert

Daily Activity for 10/21/2019

	Cars Arrived	Cars Received in Interchange	Cars Delivered in Interchange	Cars Placed for Unloading	Loads on Wheels at Destination As of 10/21/2019
CN	296			296	120

Port Unloads

	10/21	10/20	Week To Date	Last Week
CN	302	163	302	1,258

Age Profile of Loaded Cars Waiting Placement for Unloading

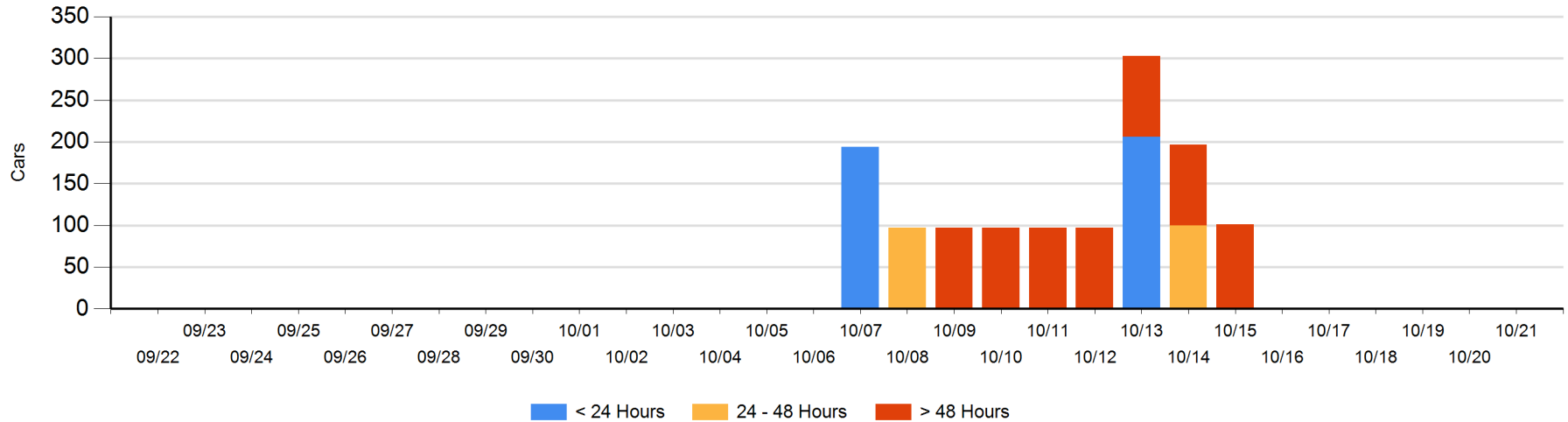
Today

	< 24 Hrs	24 - 48 Hrs	> 48-72 Hrs	> 72 Hrs	Total On Hand
CN			1		1

Change in Last 24 Hours

	< 24 Hrs	24-48 Hrs	48 - 72 Hrs	> 72 Hrs
CN		-1	1	

Loaded Cars on Hand Prince Rupert Waiting for Placement - Last 30 Days All Railways



Port Terminal Status

Thunder Bay

Daily Activity for 10/21/2019

	Cars Arrived	Cars Received in Interchange	Cars Delivered in Interchange	Cars Placed for Unloading	Loads on Wheels at Destination As of 10/21/2019
CN	305			125	493
CP	444			90	817

Port Unloads

	10/21	10/20	Week To Date	Last Week
CN	144	3	144	537
CP	180	250	180	1,634

Age Profile of Loaded Cars Waiting Placement for Unloading

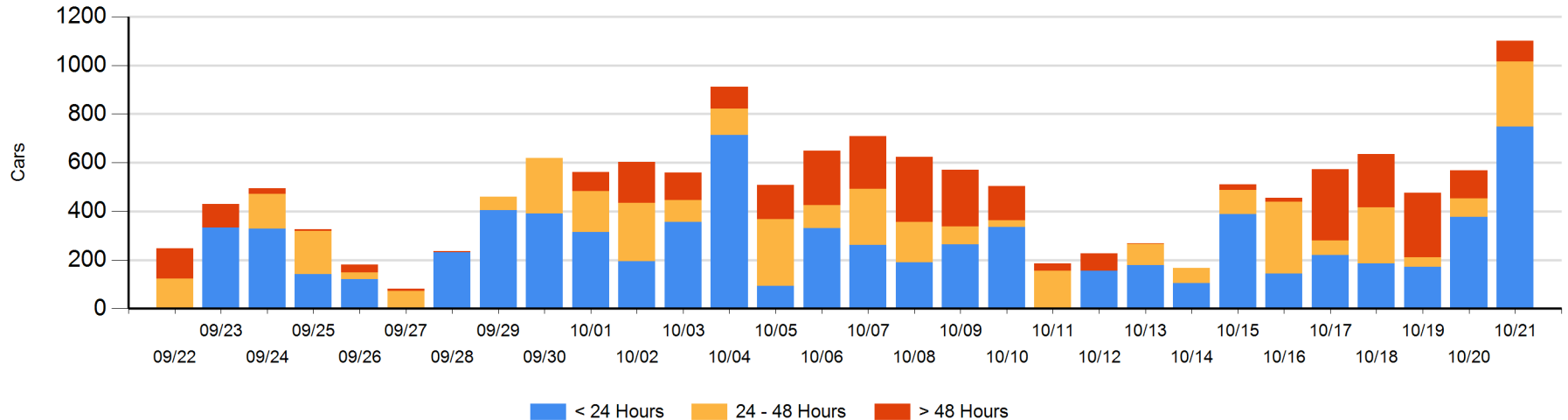
Today

	< 24 Hrs	24 - 48 Hrs	> 48-72 Hrs	> 72 Hrs	Total On Hand
CN	305			13	318
CP	444	267	15	58	784

Change in Last 24 Hours

	< 24 Hrs	24-48 Hrs	48 - 72 Hrs	> 72 Hrs
CN	241	-61	-10	10
CP	132	252	-6	-24

Loaded Cars on Hand Thunder Bay Waiting for Placement - Last 30 Days All Railways



Measurement Definitions

Loads on Wheels	<p>Count of loaded rail cars including all rail cars that have been released loaded at origin and have not been reported by the railway as unloaded at destination.</p> <p>Counts include all rail cars (hopper cars and boxcars) moving within a pipeline.</p>
Loads Not Moving	<p>Loaded rail cars for which the railways have not reported a movement event for 48 hours or more whether the rail car is at origin, enroute or at destination.</p>
Port Unloads	<p>Count of rail cars reported by railways as unloaded at the western port destinations of Vancouver, Prince Rupert and Thunder Bay.</p> <p>Unload counts include all rail cars (hopper cars and boxcars) unloaded by all receivers including major port terminals, transloaders and other receivers.</p>
Cars Arrived	<p>Count of rail cars reported as arrived at the destination railway terminal.</p>
Cars Received in Interchange	<p>Count of rail cars received in interchange by each railway within a destination railway terminal. Interchange activity is tracked for the Vancouver and Thunder Bay pipelines as applicable.</p>
Cars Delivered in Interchange	<p>Count of rail cars delivered in interchange by each railway within a destination railway terminal. Interchange activity is tracked for the Vancouver and Thunder Bay pipelines as applicable.</p>
Cars Placed for Unloading	<p>Count of rail cars reported by the railways as placed loaded at the receiver's facility for unloading.</p>
Loads on Wheels at Destination	<p>Count of rail cars that remain under load within the destination railway terminal including rail cars that have been reported as placed for unloading but not yet reported as unloaded.</p>
Waiting Placement for Unloading	<p>Count of rail cars that have been reported as arrived at the destination railway terminal but not reported as placed for unloading by the railway.</p> <p>For the Ports of Vancouver, Prince Rupert and Thunder Bay the count of rail cars waiting placement for unloading is categorized by age – i.e. the elapsed time from arrival at destination to the current report date.</p>