

SPEED READ

- Loads on wheels decreased overnight, reflecting a decline in CN traffic offset by higher CP volumes. On a net basis, volumes decreased due to reduced traffic across all corridors other than Vancouver.
- Network fluidity improved overnight, led by a decline in idle car counts on CN by 13% (-296) offset by an increase in idle car counts on CP by 18% (+121). The total count of cars for 4+ days on both railways gained 43% (+315) overnight and have now increased for the fourth consecutive day - presently at 1,050 cars, the highest seen in the last 30 days.
- Two days in Week 12 unloads now behind prior week's performance by 150 unloads, marking lower unloads at Vancouver and Prince Rupert offset by improved week over week performance at Thunder Bay.

Loads on Wheels

- Loads on wheels decreased 3% (-330) overnight, due to lower traffic on CN offset by higher traffic on CP - combined total at 11,555 and 22% above the trailing 30-day average.
- On a net basis, the decline in loads on wheels indicates reduced traffic across all corridors other than Vancouver.
- CN volumes decreased 6% (-410) overnight and have now decreased for the third consecutive day, with lower traffic across all corridors. System wide CN loads on wheels presently at 6,223 and 23% above the trailing 30-day average.
- CP volumes gained 2% (+95) overnight and have now increased for the third consecutive day, driven by an increase in traffic in the Vancouver and USA/MEX corridors offset by a decline in traffic in the Thunder Bay and E. Canada corridors. CP system wide loads on wheels currently at 5,206, the highest seen in the last 30 days, and 23% above the trailing 30-day average.
- Vancouver currently at 6,411, gained slightly by (+26) overnight, now 29% above the trailing 30-day average.
- The Prince Rupert pipeline presently at 1,834, decreased 2% (-43) overnight, and 19% above the trailing 30-day average.
- Thunder Bay volumes decreased 11% (-259) overnight - presently at 2,153 and 19% above the trailing 30-day average, with 82% of traffic moving on CP.

Hopper Car Rationing

- No hopper cars were rationed by either CN or CP in week 10.

Loads Not Moving

- **The count of cars not moving for 48+ hours decreased 6% (-175) overnight, marking reduced counts on CN offset by higher counts on CP. Idle car counts currently at 2,792 and 146% above the trailing 30-day average.**
- CN
 - **The count of idle cars for 48+ hours declined 13% (-296) overnight - presently at 2,016 cars.**
 - The number of cars idle for 4+ days gained significantly by 73% (+400) overnight and have now increased for the fourth consecutive day - presently at 948 cars, the highest seen in the last 30 days.
 - The count of cars not moving for 7+ days increased 104% (+26) overnight and have now increased for the third consecutive day - currently at 51 cars.
 - Vancouver represents 49% of all idle cars.
 - In total 58% of all idle cars are dwelling at origin locations.
- CP
 - **CP idle car counts for 48+ hours gained 18% (+121) overnight - presently at 776 cars.**

- The number of cars idle for 4+ days decreased 45% (-85) overnight - currently at 102 cars.
- The number of cars idle for 7+ days declined 56% (-35) overnight - presently at 28 cars.
- Vancouver accounts for 69% of all idle cars.
- In total 36% of all idle cars are dwelling at origin locations.

Port Performance

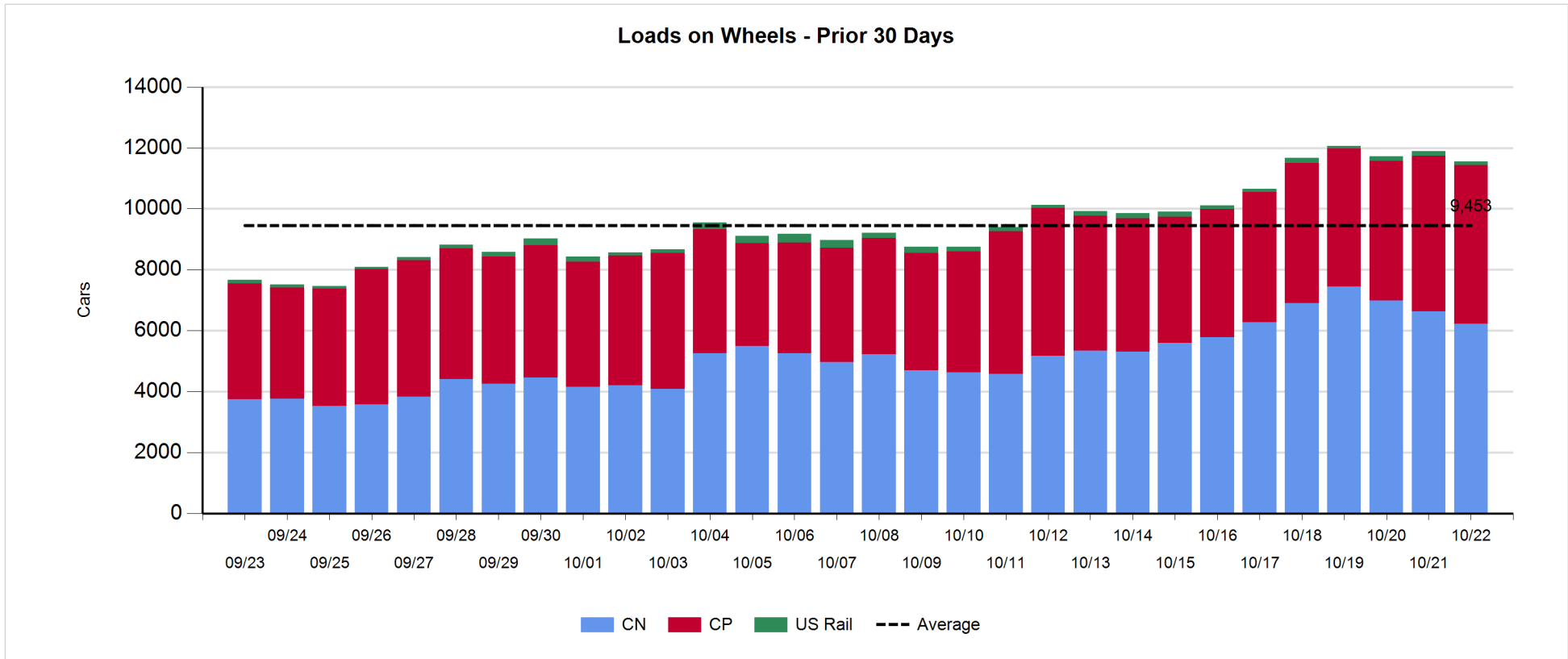
- CN and CP reported a total of 1,401 cars unloaded at the three major ports, 18% above the trailing 30-day average. Two days in Week 12 unloads now behind last week's pace by 150 unloads, marking lower unloads at Vancouver and Prince Rupert offset by higher unloads at Thunder Bay.
- Vancouver
 - 781 unloads reported by CN and CP at the Port of Vancouver; CN - 356 and CP - 425. Two days in Week 12 unloads are tracking behind last week's performance by 150 unloads.
 - There are 1,650 cars on site at Vancouver with 650 cars arriving at the port in the last 24 hours.
 - CN and CP have more than 1,500 cars in British Columbia en route to Vancouver, with 1,100 cars at Kamloops and west, and 54% of traffic moving on CN.
- Prince Rupert
 - Prince Rupert reported 207 unloads, now behind last week's unloads after two days by 50 unloads.
 - Loads on wheels remain above 1,000 cars - presently at 1,834 cars.
 - There are more than 400 cars west of Jasper en route to Prince Rupert.
 - There are 100 cars on site at Prince Rupert with 200 cars arriving at the port in the last 24 hours.
- Thunder Bay
 - 413 unloads were reported at Thunder Bay yesterday. Two days in Week 12 unloads are tracking ahead of last week's pace by 50 unloads.
 - There are 900 cars on site at Thunder Bay with zero cars arriving at the port in the prior 24 hours.
 - There are 500 cars en route to Thunder Bay from Winnipeg and east.

Daily Loads on Wheels - 10/22/2019

	E Canada	Prince Rupert	Thunder Bay	USA/MEX	Vancouver	Total
CN	469	1,834	393	357	3,170	6,223
CP	69		1,760	179	3,198	5,206
Short Line					43	43
US Rail				83		83
	538	1,834	2,153	619	6,411	11,555

Change in Loads on Wheels - Prior 24 Hours

	E Canada	Prince Rupert	Thunder Bay	USA/MEX	Vancouver	Total
CN	-44	-43	-195	-12	-116	-410
CP	-4		-64	13	150	95
Short Line					-8	-8
US Rail				-7		-7
	-48	-43	-259	-6	26	-330

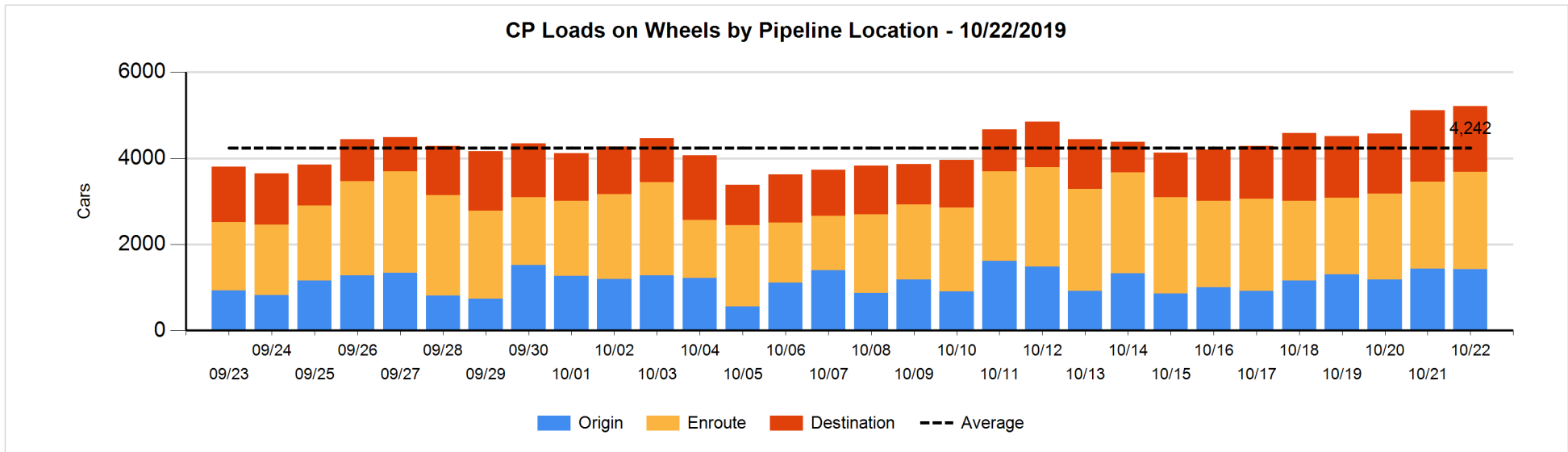
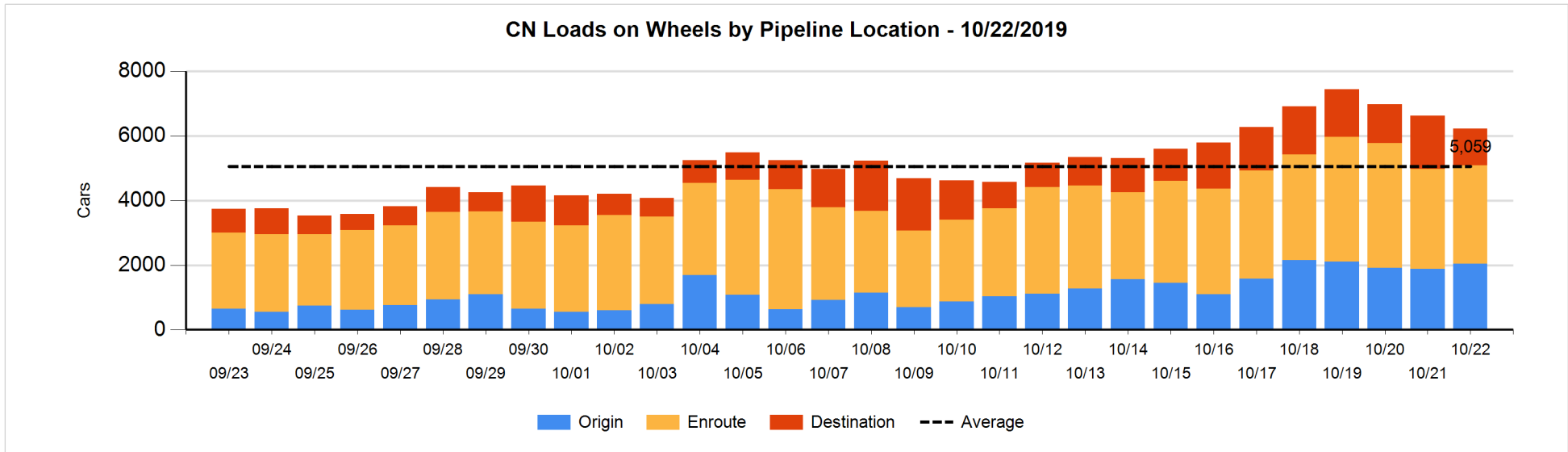


Daily Loads on Wheels By Pipeline Location - 10/22/2019

	E Canada	Prince Rupert	Thunder Bay	USA/MEX	Vancouver	Total
CN						
Origin	115	777	4	14	1,126	2,036
Enroute	347	947	91	318	1,346	3,049
Destination	7	110	298	25	698	1,138
	469	1,834	393	357	3,170	6,223
CP						
Origin	9		358	27	1,028	1,422
Enroute	59		804	135	1,262	2,260
Destination	1		598	17	908	1,524
	69		1,760	179	3,198	5,206
US Rail / Short Line						
Origin						
Enroute				49		49
Destination				34	43	77
				83	43	126

Change in Daily Loads on Wheels By Pipeline Location - Prior 24 Hours

	E Canada	Prince Rupert	Thunder Bay	USA/MEX	Vancouver	Total
CN						
Origin	0	61	0	-45	143	159
Enroute	29	-94	0	33	-21	-53
Destination	-73	-10	-195	0	-238	-516
	-44	-43	-195	-12	-116	-410
CP						
Origin	-24		-123	-25	156	-16
Enroute	24		278	49	-104	247
Destination	-4		-219	-11	98	-136
	-4		-64	13	150	95
US Rail / Short Line						
Origin						
Enroute				-17		-17
Destination				10	-8	2
				-7	-8	-15

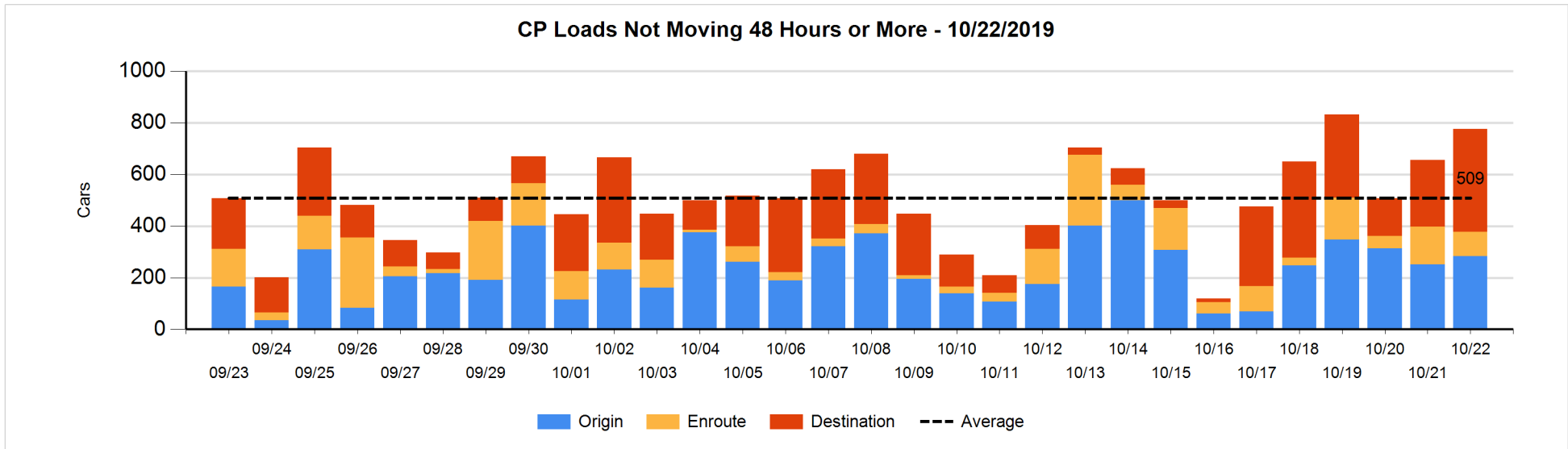
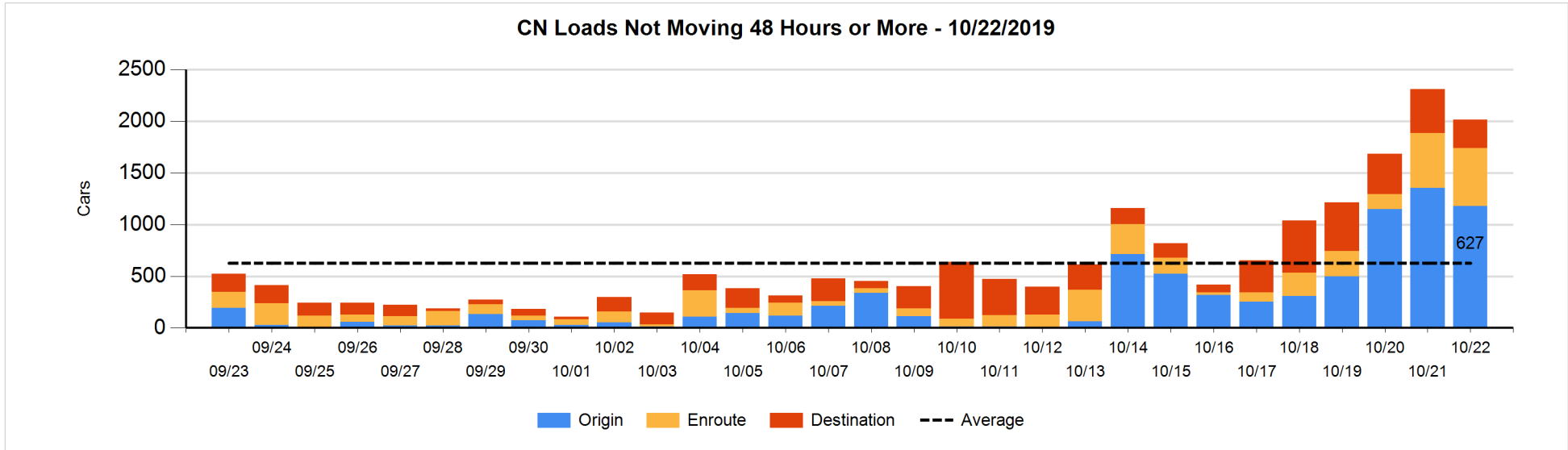


Loads Not Moving 48 Hours or More - 10/22/2019

	E Canada	Prince Rupert	Thunder Bay	USA/MEX	Vancouver	Total
CN						
Origin		613			564	1177
Enroute	92	266	1	4	201	564
Destination	7	2	35	7	224	275
	99	881	36	11	989	2016
CP						
Origin	8				275	283
Enroute			2	2	91	95
Destination			209	17	172	398
	8		211	19	538	776
US Rail / Short Line						
Origin						
Enroute				9		9
Destination				15	28	43
				24	28	52

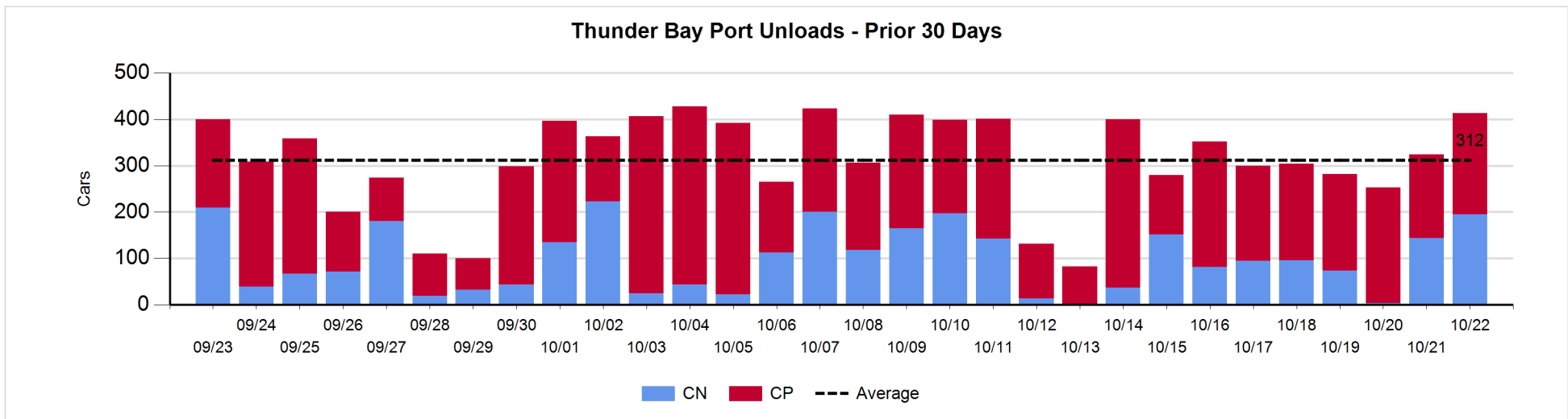
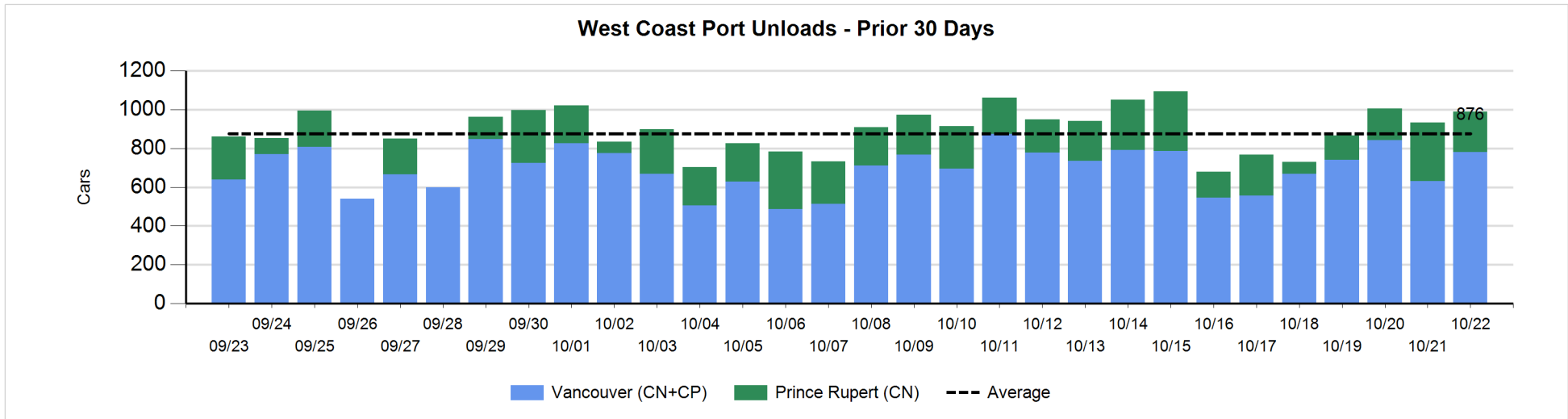
Change in Loads Not Moving 48 Hours or More - 10/22/2019

	E Canada	Prince Rupert	Thunder Bay	USA/MEX	Vancouver	Total
CN						
Origin		98		-50	-223	-175
Enroute	27	105	0	-4	-96	32
Destination	-14	-1	-43	0	-95	-153
	13	202	-43	-54	-414	-296
CP						
Origin	4		-15		43	32
Enroute	-6		-16	0	-30	-52
Destination			113	-11	39	141
	-2		82	-11	52	121
US Rail / Short Line						
Origin						
Enroute				-4		-4
Destination				-4	20	16
				-8	20	12



Port Unloads - 10/22/2019

	Prince Rupert	Vancouver	West Coast Total	Thunder Bay	Total
CN	207	356	563	195	758
CP		425	425	218	643
	207	781	988	413	1,401



Port Terminal Status

Vancouver

Daily Activity for 10/22/2019

	Cars Arrived	Cars Received in Interchange	Cars Delivered in Interchange	Cars Placed for Unloading	Loads on Wheels at Destination As of 10/22/2019
CN	292	112	404	219	698
CP	348	404	114	536	908
SRY		2		8	43

Port Unloads

	10/22	10/21	Week To Date	Last Week
CN	356	216	572	2,013
CP	425	415	840	2,918
SRY	8	7	15	24

Age Profile of Loaded Cars Waiting Placement for Unloading

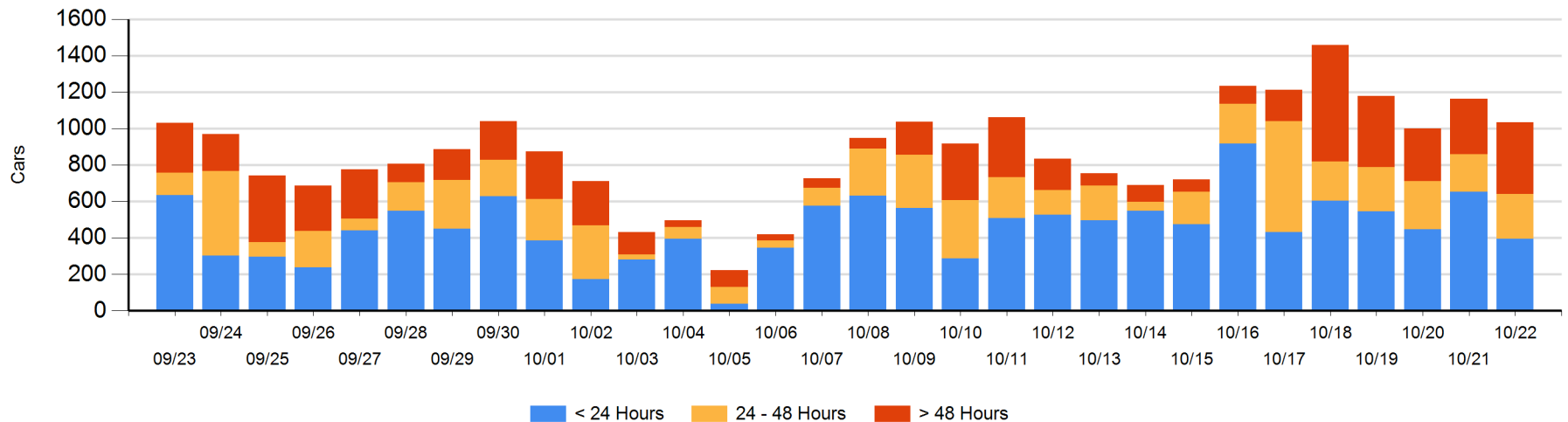
Today

	< 24 Hrs	24 - 48 Hrs	> 48-72 Hrs	> 72 Hrs	Total On Hand
CN	151	96	23	91	361
CP	245	149	131	149	674
SRY					0

Change in Last 24 Hours

	< 24 Hrs	24-48 Hrs	48 - 72 Hrs	> 72 Hrs
CN	-117	71	-23	16
CP	-141	-31	-7	104
SRY				

Loaded Cars on Hand Vancouver Waiting for Placement - Last 30 Days All Railways



Port Terminal Status

Prince Rupert

Daily Activity for 10/22/2019

	Cars Arrived	Cars Received in Interchange	Cars Delivered in Interchange	Cars Placed for Unloading	Loads on Wheels at Destination As of 10/22/2019
CN	198			198	110

Port Unloads

	10/22	10/21	Week To Date	Last Week
CN	207	302	509	1,258

Age Profile of Loaded Cars Waiting Placement for Unloading

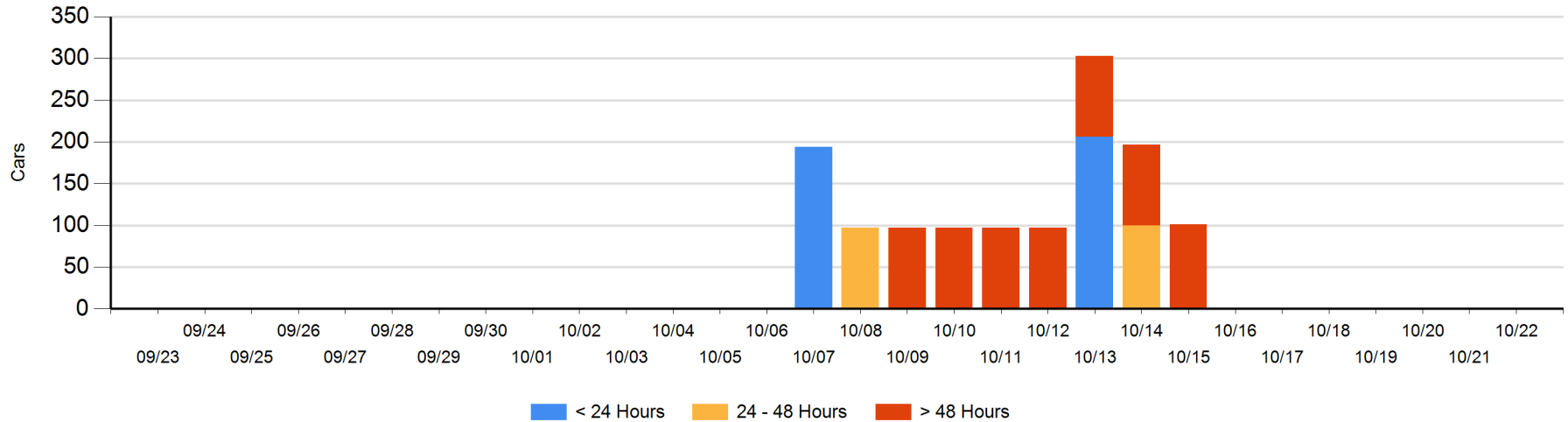
Today

	< 24 Hrs	24 - 48 Hrs	> 48-72 Hrs	> 72 Hrs	Total On Hand
CN					0

Change in Last 24 Hours

	< 24 Hrs	24-48 Hrs	48 - 72 Hrs	> 72 Hrs
CN			-1	

Loaded Cars on Hand Prince Rupert Waiting for Placement - Last 30 Days All Railways



Port Terminal Status

Thunder Bay

Daily Activity for 10/22/2019

	Cars Arrived	Cars Received in Interchange	Cars Delivered in Interchange	Cars Placed for Unloading	Loads on Wheels at Destination As of 10/22/2019
CN		3		139	298
CP			3	212	598

Port Unloads

	10/22	10/21	Week To Date	Last Week
CN	195	144	339	537
CP	218	180	398	1,634

Age Profile of Loaded Cars Waiting Placement for Unloading

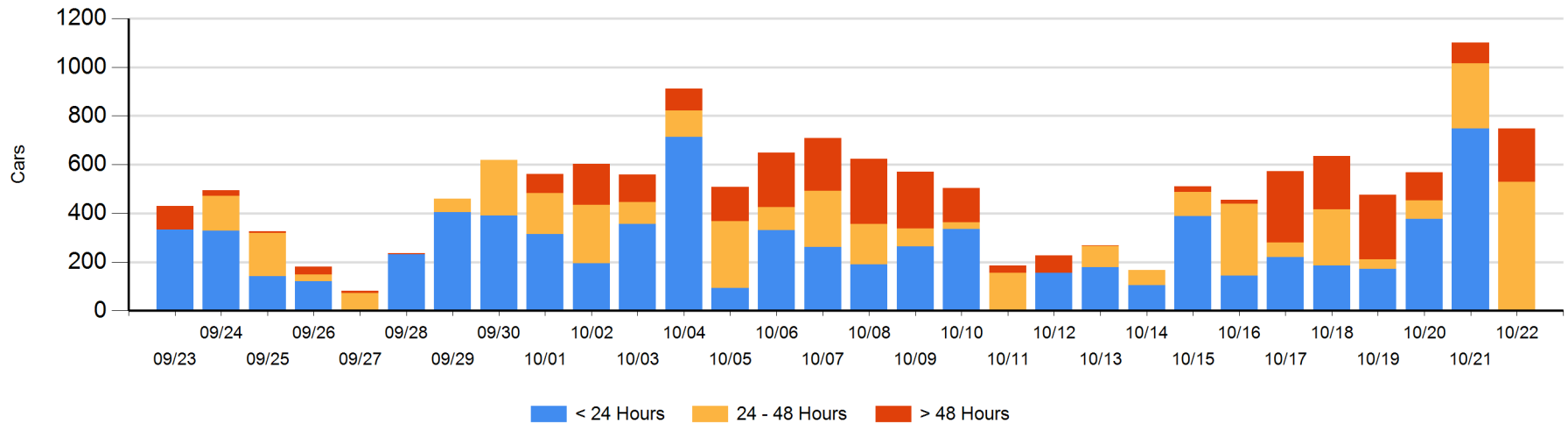
Today

	< 24 Hrs	24 - 48 Hrs	> 48-72 Hrs	> 72 Hrs	Total On Hand
CN		166		13	179
CP		363	144	61	568

Change in Last 24 Hours

	< 24 Hrs	24-48 Hrs	48 - 72 Hrs	> 72 Hrs
CN	-305	166		0
CP	-444	96	129	3

Loaded Cars on Hand Thunder Bay Waiting for Placement - Last 30 Days All Railways



Measurement Definitions

Loads on Wheels	<p>Count of loaded rail cars including all rail cars that have been released loaded at origin and have not been reported by the railway as unloaded at destination.</p> <p>Counts include all rail cars (hopper cars and boxcars) moving within a pipeline.</p>
Loads Not Moving	<p>Loaded rail cars for which the railways have not reported a movement event for 48 hours or more whether the rail car is at origin, enroute or at destination.</p>
Port Unloads	<p>Count of rail cars reported by railways as unloaded at the western port destinations of Vancouver, Prince Rupert and Thunder Bay.</p> <p>Unload counts include all rail cars (hopper cars and boxcars) unloaded by all receivers including major port terminals, transloaders and other receivers.</p>
Cars Arrived	<p>Count of rail cars reported as arrived at the destination railway terminal.</p>
Cars Received in Interchange	<p>Count of rail cars received in interchange by each railway within a destination railway terminal. Interchange activity is tracked for the Vancouver and Thunder Bay pipelines as applicable.</p>
Cars Delivered in Interchange	<p>Count of rail cars delivered in interchange by each railway within a destination railway terminal. Interchange activity is tracked for the Vancouver and Thunder Bay pipelines as applicable.</p>
Cars Placed for Unloading	<p>Count of rail cars reported by the railways as placed loaded at the receiver's facility for unloading.</p>
Loads on Wheels at Destination	<p>Count of rail cars that remain under load within the destination railway terminal including rail cars that have been reported as placed for unloading but not yet reported as unloaded.</p>
Waiting Placement for Unloading	<p>Count of rail cars that have been reported as arrived at the destination railway terminal but not reported as placed for unloading by the railway.</p> <p>For the Ports of Vancouver, Prince Rupert and Thunder Bay the count of rail cars waiting placement for unloading is categorized by age – i.e. the elapsed time from arrival at destination to the current report date.</p>