

SPEED READ

- Loads on wheels declined overnight, reflecting a decline in both CN and CP volumes. On a net basis, volumes declined due to lower volumes across all corridors.
- Network fluidity deteriorated overnight, led by an increase in idle car counts on CP by 80% (+621) offset by a decline in idle car counts on CN by 30% (-611). The total count of cars for 4+ days on both railways declined 4% (-38) overnight - now at 1,011 cars.
- Three days in Week 12 unloads now ahead of prior week's performance by 350 unloads, reflecting improved week over week performance across all three major ports - Vancouver, Thunder Bay and Prince Rupert.

=====

Loads on Wheels

- Loads on wheels declined 6% (-716) overnight, due to reduced volumes on both CN and CP - combined total at 10,936 and 14% above the trailing 30-day average.
- On a net basis, the decline in loads on wheels indicates lower volumes across all corridors.
- CN volumes declined for the fourth consecutive day, down 7% (-412) overnight, with reduced volumes across all corridors other than USA/MEX. System wide CN loads on wheels now at 5,913 and 15% above the trailing 30-day average.
- CP volumes declined 6% (-333) overnight, driven by a decline in volumes across all corridors. CP system wide loads on wheels currently at 4,868 and 14% above the trailing 30-day average.
- Vancouver now at 5,963, declined 7% (-443) overnight, now 18% above the trailing 30-day average.
- The Prince Rupert pipeline presently at 1,704, declined for the third consecutive day, down 7% (-130) overnight, and 8% above the trailing 30-day average.
- Thunder Bay volumes declined 5% (-101) overnight - currently at 2,051 and 12% above the trailing 30-day average, with 83% of traffic moving on CP.

Hopper Car Rationing

- No hopper cars were rationed by either CN or CP in week 10.

Loads Not Moving

- **The count of cars not moving for 48+ hours increased marginally by (+10) overnight, marking higher counts on CP offset by lower counts on CN. Idle car counts presently at 2,801 and 134% above the trailing 30-day average.**
- CN
 - **The count of idle cars for 48+ hours declined 30% (-611) overnight - presently at 1,404 cars.**
 - The number of cars idle for 4+ days declined 4% (-40) overnight - currently at 907 cars.
 - The count of cars not moving for 7+ days declined 6% (-3) overnight - now at 48 cars.
 - Vancouver represents 55% of all idle cars.
 - In total 51% of all idle cars are dwelling at origin locations.
- CP
 - **CP idle car counts for 48+ hours gained for the third consecutive day, up 80% (+621) overnight - currently at 1,397 cars, the highest seen in the last 30 days.**
 - The number of cars idle for 4+ days increased 2% (+2) overnight - currently at 104 cars.
 - The number of cars idle for 7+ days declined for the third consecutive day, down 46% (-13) overnight - currently at 15 cars.

- Vancouver accounts for 65% of all idle cars.
- In total 59% of all idle cars are dwelling at origin locations.

Port Performance

- CN and CP reported a total of 1,520 cars unloaded at the three major ports, the highest seen in the last 30 days and 27% above the trailing 30-day average. Three days in Week 12 unloads now ahead of last week's pace by 350 unloads, reflecting higher unloads across all three major ports - Vancouver, Thunder Bay and Prince Rupert.
- Vancouver
 - 906 unloads, the highest seen in the last 30 days, was reported by CN and CP at the Port of Vancouver; CN - 434 and CP - 472. Three days in Week 12 unloads are tracking ahead of last week's performance by more than 200 unloads.
 - There are 1,950 cars on site at Vancouver with more than 1,200 cars arriving at the port in the last 24 hours.
 - CN and CP have 900 cars in British Columbia en route to Vancouver, with 500 cars at Kamloops and west, and 56% of traffic moving on CP.
- Prince Rupert
 - Prince Rupert reported 192 unloads, now at par with last week's unloads after three days.
 - Loads on wheels remain above 1,000 cars - presently at 1,704 cars.
 - There are more than 350 cars west of Jasper en route to Prince Rupert.
 - There are fewer than 100 cars on site at Prince Rupert with more than 150 cars arriving at the port in the last 24 hours.
- Thunder Bay
 - 422 unloads were reported at Thunder Bay yesterday. Three days in Week 12 unloads are tracking ahead of last week's pace by more than 100 unloads.
 - There are 850 cars on site at Thunder Bay with more than 350 cars arriving at the port in the prior 24 hours.
 - There are 550 cars en route to Thunder Bay from Winnipeg and east.

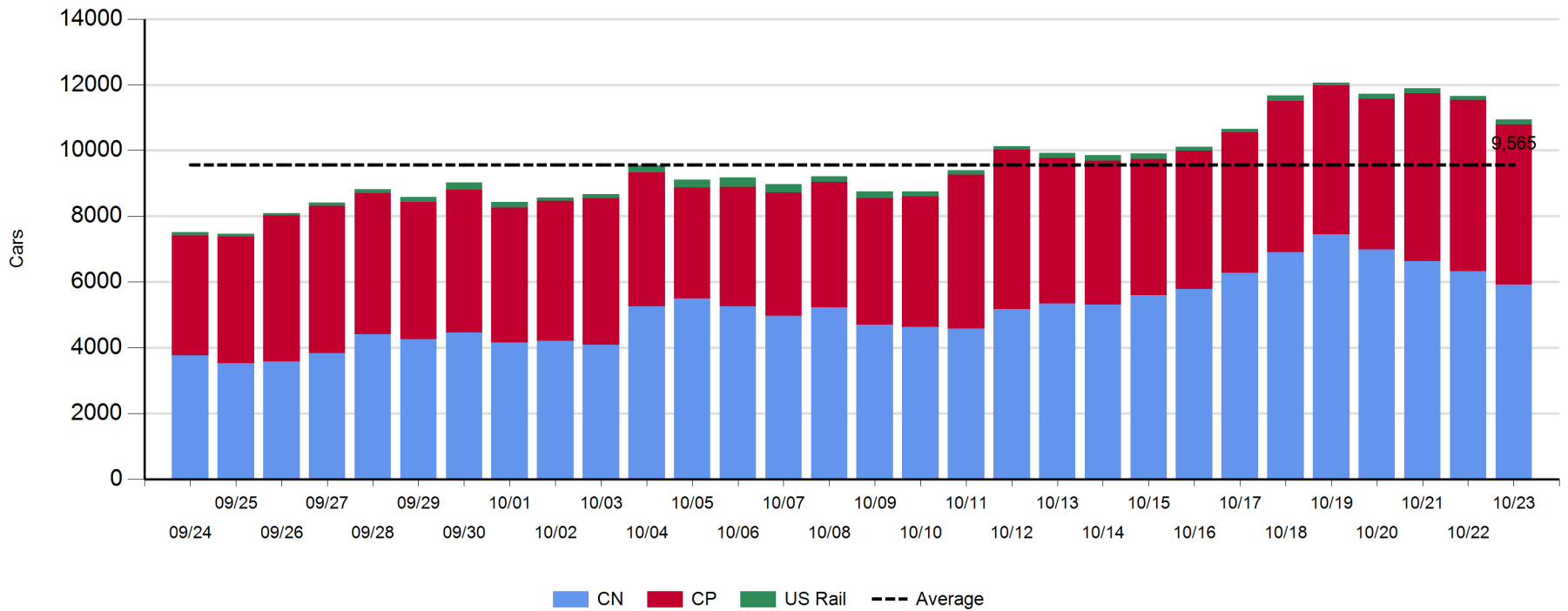
Daily Loads on Wheels - 10/23/2019

| | E Canada | Prince Rupert | Thunder Bay | USA/MEX | Vancouver | Total |
|------------|----------|---------------|-------------|---------|-----------|--------|
| CN | 463 | 1,704 | 348 | 464 | 2,934 | 5,913 |
| CP | 38 | | 1,703 | 137 | 2,990 | 4,868 |
| Short Line | 7 | | | | 39 | 46 |
| US Rail | | | | 109 | | 109 |
| | 508 | 1,704 | 2,051 | 710 | 5,963 | 10,936 |

Change in Loads on Wheels - Prior 24 Hours

| | E Canada | Prince Rupert | Thunder Bay | USA/MEX | Vancouver | Total |
|------------|----------|---------------|-------------|---------|-----------|-------|
| CN | -6 | -130 | -44 | 4 | -236 | -412 |
| CP | -31 | | -57 | -42 | -203 | -333 |
| Short Line | 7 | | | | -4 | 3 |
| US Rail | | | | 26 | | 26 |
| | -30 | -130 | -101 | -12 | -443 | -716 |

Loads on Wheels - Prior 30 Days

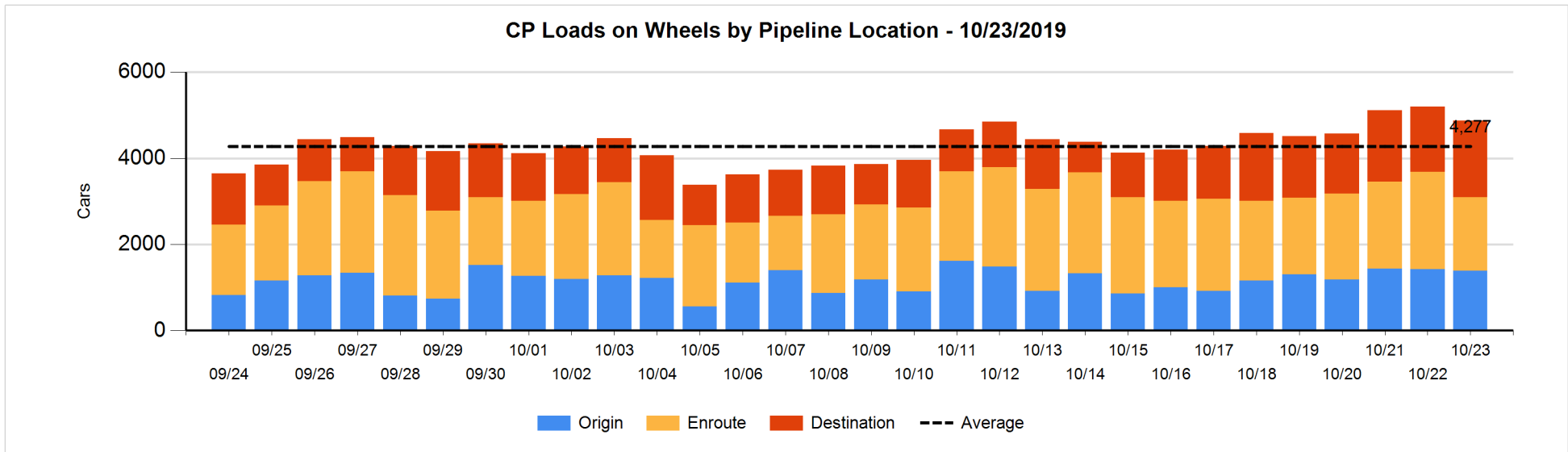
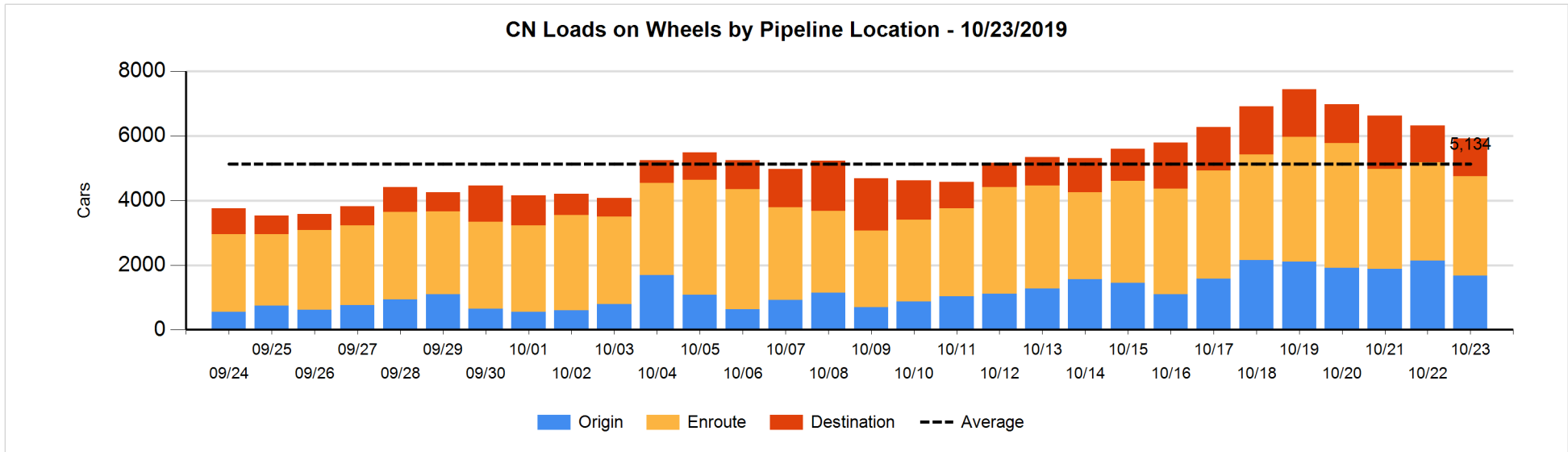


Daily Loads on Wheels By Pipeline Location - 10/23/2019

| | E Canada | Prince Rupert | Thunder Bay | USA/MEX | Vancouver | Total |
|----------------------|----------|---------------|-------------|---------|-----------|-------|
| CN | | | | | | |
| Origin | 16 | 528 | 103 | 129 | 894 | 1,670 |
| Enroute | 422 | 1,091 | 84 | 298 | 1,191 | 3,086 |
| Destination | 25 | 85 | 161 | 37 | 849 | 1,157 |
| | 463 | 1,704 | 348 | 464 | 2,934 | 5,913 |
| CP | | | | | | |
| Origin | 3 | | 334 | 27 | 1,026 | 1,390 |
| Enroute | 34 | | 681 | 88 | 906 | 1,709 |
| Destination | 1 | | 688 | 22 | 1,058 | 1,769 |
| | 38 | | 1,703 | 137 | 2,990 | 4,868 |
| US Rail / Short Line | | | | | | |
| Origin | | | | | | |
| Enroute | | | | 51 | | 51 |
| Destination | 7 | | | 58 | 39 | 104 |
| | 7 | | | 109 | 39 | 155 |

Change in Daily Loads on Wheels By Pipeline Location - Prior 24 Hours

| | E Canada | Prince Rupert | Thunder Bay | USA/MEX | Vancouver | Total |
|----------------------|----------|---------------|-------------|---------|-----------|-------|
| CN | | | | | | |
| Origin | -99 | -249 | 99 | 12 | -232 | -469 |
| Enroute | 75 | 144 | -7 | -20 | -155 | 37 |
| Destination | 18 | -25 | -136 | 12 | 151 | 20 |
| | -6 | -130 | -44 | 4 | -236 | -412 |
| CP | | | | | | |
| Origin | -6 | | -24 | 0 | -2 | -32 |
| Enroute | -25 | | -123 | -47 | -357 | -552 |
| Destination | 0 | | 90 | 5 | 156 | 251 |
| | -31 | | -57 | -42 | -203 | -333 |
| US Rail / Short Line | | | | | | |
| Origin | | | | | | |
| Enroute | | | | 2 | | 2 |
| Destination | 7 | | | 24 | -4 | 27 |
| | 7 | | | 26 | -4 | 29 |

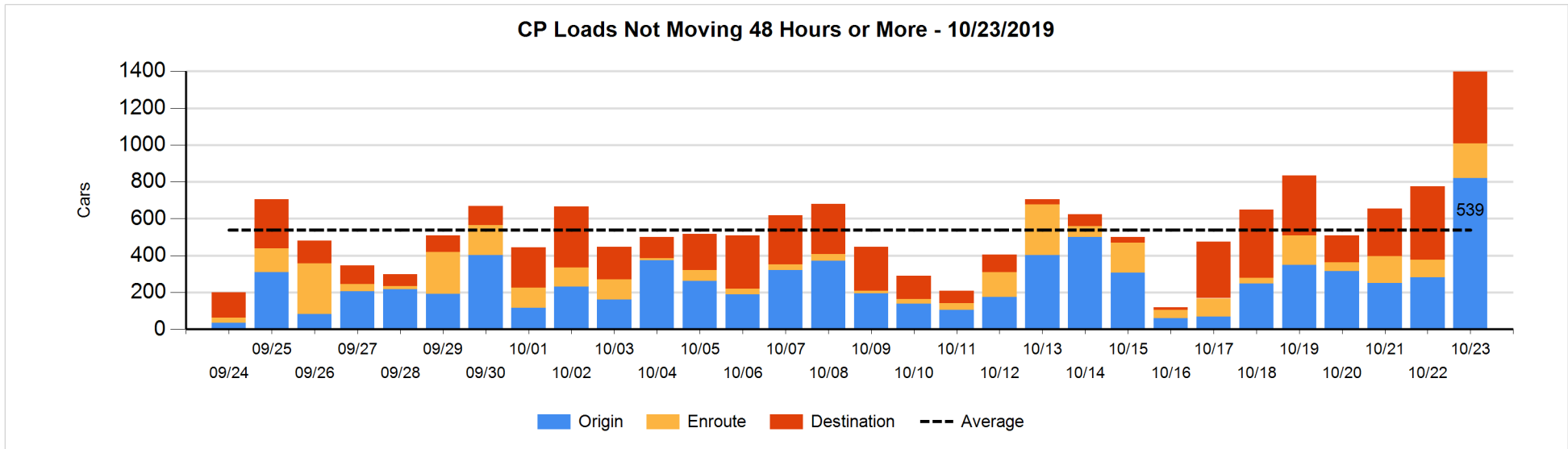
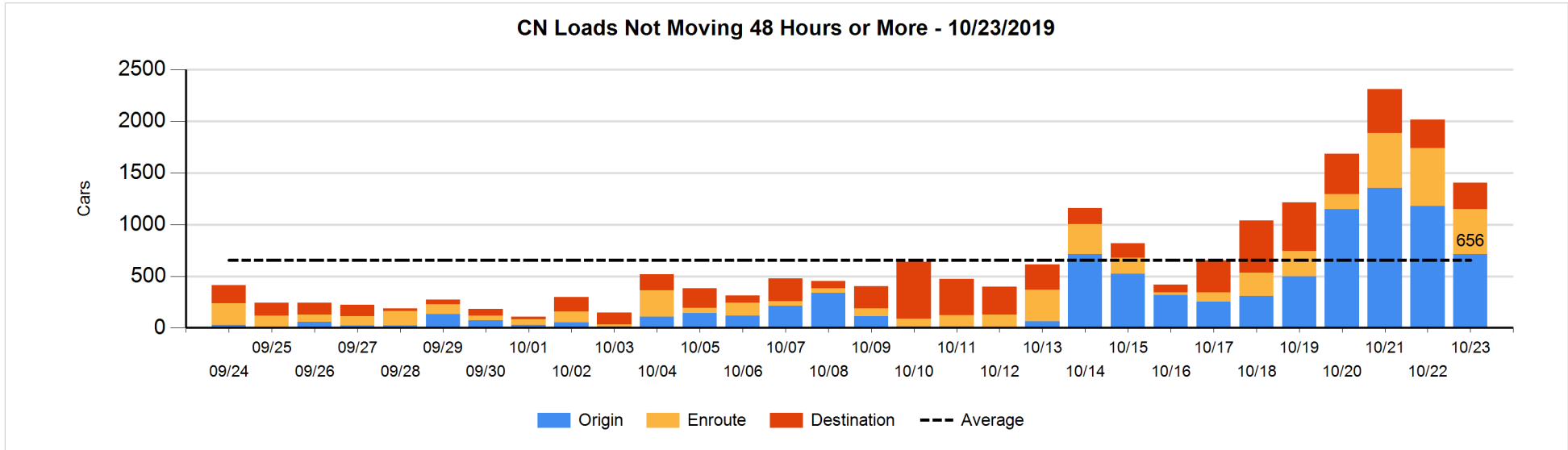


Loads Not Moving 48 Hours or More - 10/23/2019

| | E Canada | Prince Rupert | Thunder Bay | USA/MEX | Vancouver | Total |
|-----------------------------|----------|---------------|-------------|---------|-----------|-------|
| CN | | | | | | |
| Origin | 14 | 303 | 4 | | 393 | 714 |
| Enroute | 92 | 107 | 1 | 3 | 231 | 434 |
| Destination | 2 | 3 | 85 | 12 | 154 | 256 |
| | 108 | 413 | 90 | 15 | 778 | 1404 |
| CP | | | | | | |
| Origin | | | 112 | 2 | 706 | 820 |
| Enroute | | | 69 | | 118 | 187 |
| Destination | | | 310 | 1 | 79 | 390 |
| | | | 491 | 3 | 903 | 1397 |
| US Rail / Short Line | | | | | | |
| Origin | | | | | | |
| Enroute | | | | 11 | | 11 |
| Destination | | | | 12 | 30 | 42 |
| | | | | 23 | 30 | 53 |

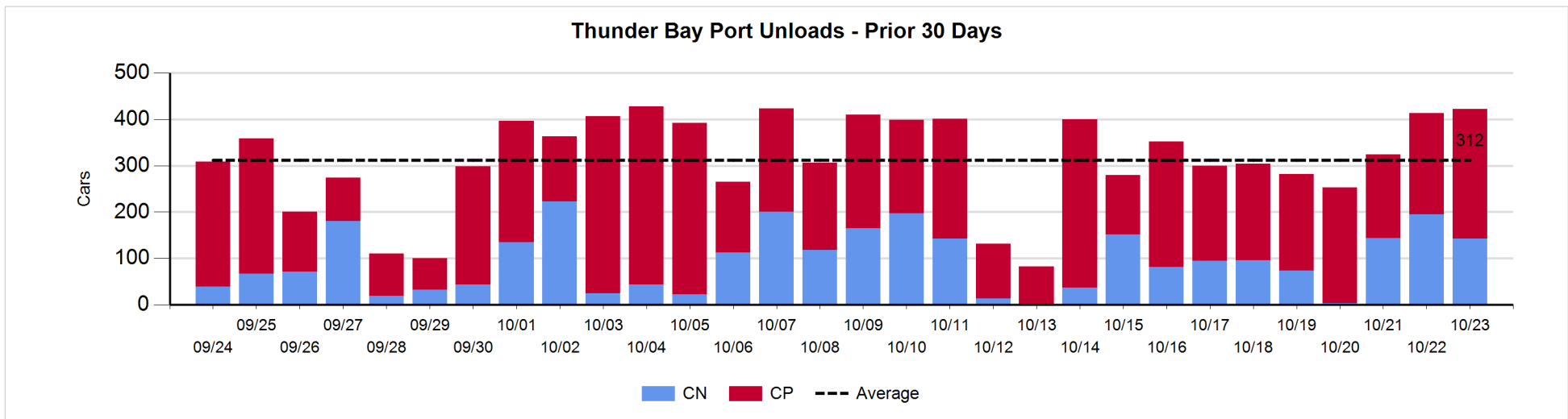
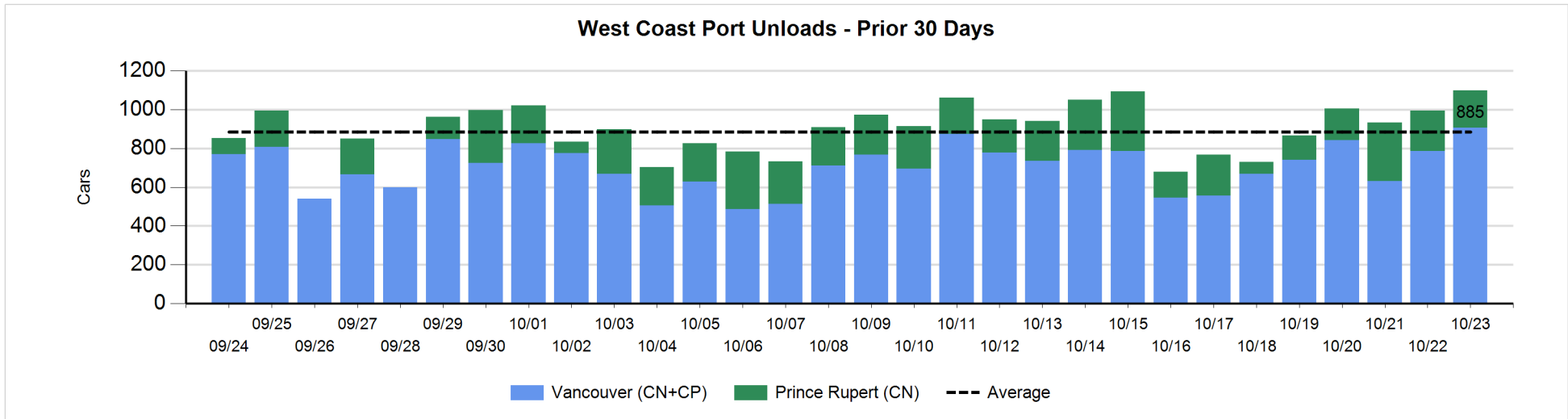
Change in Loads Not Moving 48 Hours or More - 10/23/2019

| | E Canada | Prince Rupert | Thunder Bay | USA/MEX | Vancouver | Total |
|-----------------------------|----------|---------------|-------------|---------|-----------|-------|
| CN | | | | | | |
| Origin | 14 | -310 | 4 | | -171 | -463 |
| Enroute | 0 | -159 | 0 | -1 | 30 | -130 |
| Destination | -5 | 1 | 51 | 5 | -70 | -18 |
| | 9 | -468 | 55 | 4 | -211 | -611 |
| CP | | | | | | |
| Origin | -8 | | 112 | 2 | 431 | 537 |
| Enroute | | | 67 | -2 | 27 | 92 |
| Destination | | | 101 | -16 | -93 | -8 |
| | -8 | | 280 | -16 | 365 | 621 |
| US Rail / Short Line | | | | | | |
| Origin | | | | | | |
| Enroute | | | | 2 | | 2 |
| Destination | | | | -3 | 2 | -1 |
| | | | | -1 | 2 | 1 |



Port Unloads - 10/23/2019

| | Prince Rupert | Vancouver | West Coast Total | Thunder Bay | Total |
|----|---------------|-----------|------------------|-------------|-------|
| CN | 192 | 434 | 626 | 143 | 769 |
| CP | | 472 | 472 | 279 | 751 |
| | 192 | 906 | 1,098 | 422 | 1,520 |



Port Terminal Status

Vancouver

Daily Activity for 10/23/2019

| | Cars Arrived | Cars Received in Interchange | Cars Delivered in Interchange | Cars Placed for Unloading | Loads on Wheels at Destination As of 10/23/2019 |
|-----|--------------|------------------------------|-------------------------------|---------------------------|---|
| CN | 567 | 349 | 263 | 372 | 849 |
| CP | 655 | 262 | 357 | 535 | 1,058 |
| SRY | 2 | 9 | | 16 | 39 |

Port Unloads

| | 10/23 | 10/22 | Week To Date | Last Week |
|-----|-------|-------|--------------|-----------|
| CN | 434 | 356 | 1,006 | 2,013 |
| CP | 472 | 431 | 1,318 | 2,918 |
| SRY | 16 | 8 | 31 | 24 |

Age Profile of Loaded Cars Waiting Placement for Unloading

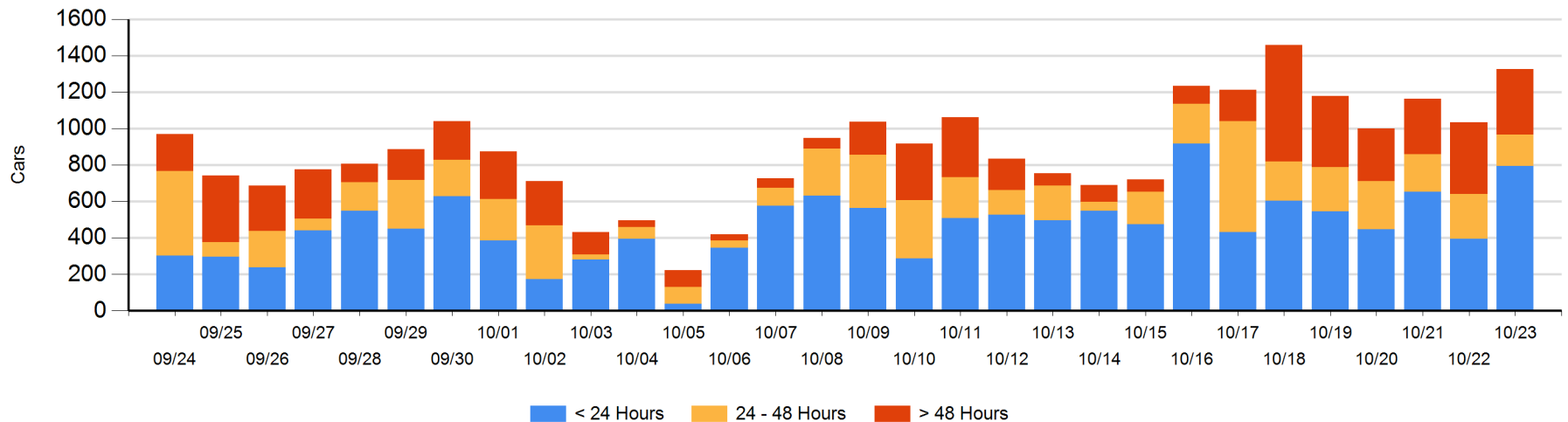
Today

| | < 24 Hrs | 24 - 48 Hrs | > 48-72 Hrs | > 72 Hrs | Total On Hand |
|-----|----------|-------------|-------------|----------|---------------|
| CN | 308 | 108 | 75 | 90 | 581 |
| CP | 485 | 66 | 82 | 111 | 744 |
| SRY | 1 | | | | 1 |

Change in Last 24 Hours

| | < 24 Hrs | 24-48 Hrs | 48 - 72 Hrs | > 72 Hrs |
|-----|----------|-----------|-------------|----------|
| CN | 156 | 12 | 52 | -1 |
| CP | 241 | -83 | -49 | -38 |
| SRY | 1 | | | |

Loaded Cars on Hand Vancouver Waiting for Placement - Last 30 Days All Railways



Port Terminal Status

Prince Rupert

Daily Activity for 10/23/2019

| | Cars Arrived | Cars Received in Interchange | Cars Delivered in Interchange | Cars Placed for Unloading | Loads on Wheels at Destination As of 10/23/2019 |
|----|--------------|------------------------------|-------------------------------|---------------------------|---|
| CN | 164 | | | 165 | 85 |

Port Unloads

| | 10/23 | 10/22 | Week To Date | Last Week |
|----|-------|-------|--------------|-----------|
| CN | 192 | 207 | 701 | 1,258 |

Age Profile of Loaded Cars Waiting Placement for Unloading

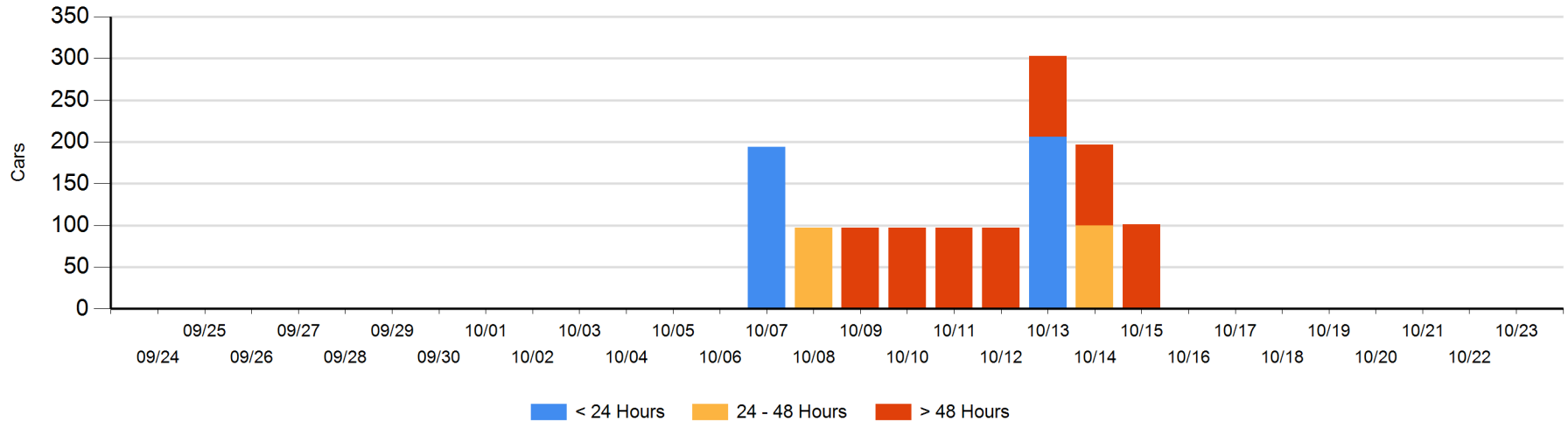
Today

| | < 24 Hrs | 24 - 48 Hrs | > 48-72 Hrs | > 72 Hrs | Total On Hand |
|----|----------|-------------|-------------|----------|---------------|
| CN | | | | 1 | 1 |

Change in Last 24 Hours

| | < 24 Hrs | 24-48 Hrs | 48 - 72 Hrs | > 72 Hrs |
|----|----------|-----------|-------------|----------|
| CN | | | | 1 |

Loaded Cars on Hand Prince Rupert Waiting for Placement - Last 30 Days All Railways



Port Terminal Status

Thunder Bay

Daily Activity for 10/23/2019

| | Cars Arrived | Cars Received in Interchange | Cars Delivered in Interchange | Cars Placed for Unloading | Loads on Wheels at Destination As of 10/23/2019 |
|----|--------------|------------------------------|-------------------------------|---------------------------|---|
| CN | 7 | | | 86 | 161 |
| CP | 369 | | | 248 | 688 |

Port Unloads

| | 10/23 | 10/22 | Week To Date | Last Week |
|----|-------|-------|--------------|-----------|
| CN | 143 | 195 | 482 | 537 |
| CP | 279 | 218 | 677 | 1,634 |

Age Profile of Loaded Cars Waiting Placement for Unloading

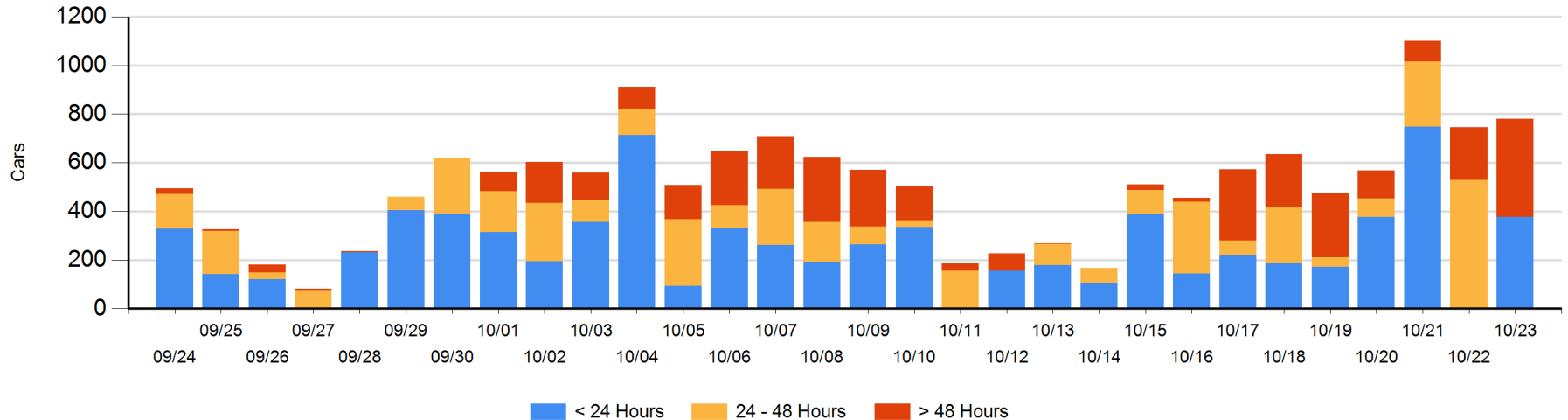
Today

| | < 24 Hrs | 24 - 48 Hrs | > 48-72 Hrs | > 72 Hrs | Total On Hand |
|----|----------|-------------|-------------|----------|---------------|
| CN | 7 | | 89 | 3 | 99 |
| CP | 369 | | 146 | 166 | 681 |

Change in Last 24 Hours

| | < 24 Hrs | 24-48 Hrs | 48 - 72 Hrs | > 72 Hrs |
|----|----------|-----------|-------------|----------|
| CN | 7 | -166 | 89 | -9 |
| CP | 369 | -363 | 2 | 105 |

Loaded Cars on Hand Thunder Bay Waiting for Placement - Last 30 Days All Railways



Measurement Definitions

| | |
|---------------------------------|---|
| Loads on Wheels | <p>Count of loaded rail cars including all rail cars that have been released loaded at origin and have not been reported by the railway as unloaded at destination.</p> <p>Counts include all rail cars (hopper cars and boxcars) moving within a pipeline.</p> |
| Loads Not Moving | <p>Loaded rail cars for which the railways have not reported a movement event for 48 hours or more whether the rail car is at origin, enroute or at destination.</p> |
| Port Unloads | <p>Count of rail cars reported by railways as unloaded at the western port destinations of Vancouver, Prince Rupert and Thunder Bay.</p> <p>Unload counts include all rail cars (hopper cars and boxcars) unloaded by all receivers including major port terminals, transloaders and other receivers.</p> |
| Cars Arrived | <p>Count of rail cars reported as arrived at the destination railway terminal.</p> |
| Cars Received in Interchange | <p>Count of rail cars received in interchange by each railway within a destination railway terminal. Interchange activity is tracked for the Vancouver and Thunder Bay pipelines as applicable.</p> |
| Cars Delivered in Interchange | <p>Count of rail cars delivered in interchange by each railway within a destination railway terminal. Interchange activity is tracked for the Vancouver and Thunder Bay pipelines as applicable.</p> |
| Cars Placed for Unloading | <p>Count of rail cars reported by the railways as placed loaded at the receiver's facility for unloading.</p> |
| Loads on Wheels at Destination | <p>Count of rail cars that remain under load within the destination railway terminal including rail cars that have been reported as placed for unloading but not yet reported as unloaded.</p> |
| Waiting Placement for Unloading | <p>Count of rail cars that have been reported as arrived at the destination railway terminal but not reported as placed for unloading by the railway.</p> <p>For the Ports of Vancouver, Prince Rupert and Thunder Bay the count of rail cars waiting placement for unloading is categorized by age – i.e. the elapsed time from arrival at destination to the current report date.</p> |