

SPEED READ

- Loads on wheels increased overnight, marking an increase in CN volumes offset by reduced CP volumes. On a net basis, volumes increased due to higher volumes in the Prince Rupert and Vancouver corridors offset by lower traffic in the Thunder Bay, E. Canada and USA/MEX corridors.
- Network fluidity improved overnight, led by a decline in idle car counts on both CN and CP by 15% (-216) and 46% (-645), respectively. The total count of cars for 4+ days on both railways increased 2% (+25) overnight - now at 1,040 cars.
- Four days in Week 12 unloads now ahead of prior week's performance by around 650 unloads, marking improved week over week performance at Vancouver and Thunder Bay offset by lower unloads at Prince Rupert.

Loads on Wheels

- Loads on wheels increased 2% (+231) overnight, due to higher traffic on CN offset by reduced volumes on CP - combined total at 11,171 and 15% above the trailing 30-day average.
- On a net basis, the increase in loads on wheels reflects higher volumes in the Prince Rupert and Vancouver corridors offset by lower traffic in the Thunder Bay, E. Canada and USA/MEX corridors.
- CN volumes increased 7% (+426) overnight, with higher traffic in the Prince Rupert, Vancouver and Thunder Bay corridors offset by lower traffic in the USA/MEX and E. Canada corridors. System wide CN loads on wheels currently at 6,343 and 21% above the trailing 30-day average.
- CP volumes fell 5% (-249) overnight, driven by a decline in traffic in the Thunder Bay and Vancouver corridors offset by an increase in volumes in the USA/MEX and E. Canada corridors. CP system wide loads on wheels currently at 4,619 and 7% above the trailing 30-day average.
- Vancouver currently at 6,143, increased 3% (+180) overnight, now 21% above the trailing 30-day average.
- The Prince Rupert pipeline currently at 1,909, rose 12% (+201) overnight, and is currently 18% above the trailing 30-day average.
- Thunder Bay volumes declined for the third consecutive day, down 5% (-106) overnight - presently at 1,945 and 4% above the trailing 30-day average, with 74% of traffic moving on CP.

Hopper Car Rationing

- No hopper cars were rationed by either CN or CP in week 11.

Loads Not Moving

- **The count of cars not moving for 48+ hours declined 31% (-861) overnight, marking reduced counts on both CN and CP. Idle car counts now at 1,944 and 57% above the trailing 30-day average.**
- CN
 - **The count of idle cars for 48+ hours declined 15% (-216) overnight and have now decreased for the third consecutive day - presently at 1,192 cars.**
 - The number of cars idle for 4+ days fell 13% (-117) overnight - currently at 794 cars.
 - The count of cars not moving for 7+ days increased 240% (+115) overnight - currently at 163 cars, the highest seen in the last 30 days.
 - Vancouver represents 58% of all idle cars.
 - In total 70% of all idle cars are dwelling at origin locations.
- CP
 - **CP idle car counts for 48+ hours decreased significantly by 46% (-645) overnight - currently at 752 cars.**
 - The number of cars idle for 4+ days increased 137% (+142) overnight - currently at 246 cars, the highest seen in the last 30 days.

- The number of cars idle for 7+ days declined for the fourth consecutive day, down 33% (-5) overnight - currently at 10 cars.
- Vancouver accounts for 70% of all idle cars.
- In total 57% of all idle cars are dwelling at origin locations.

Port Performance

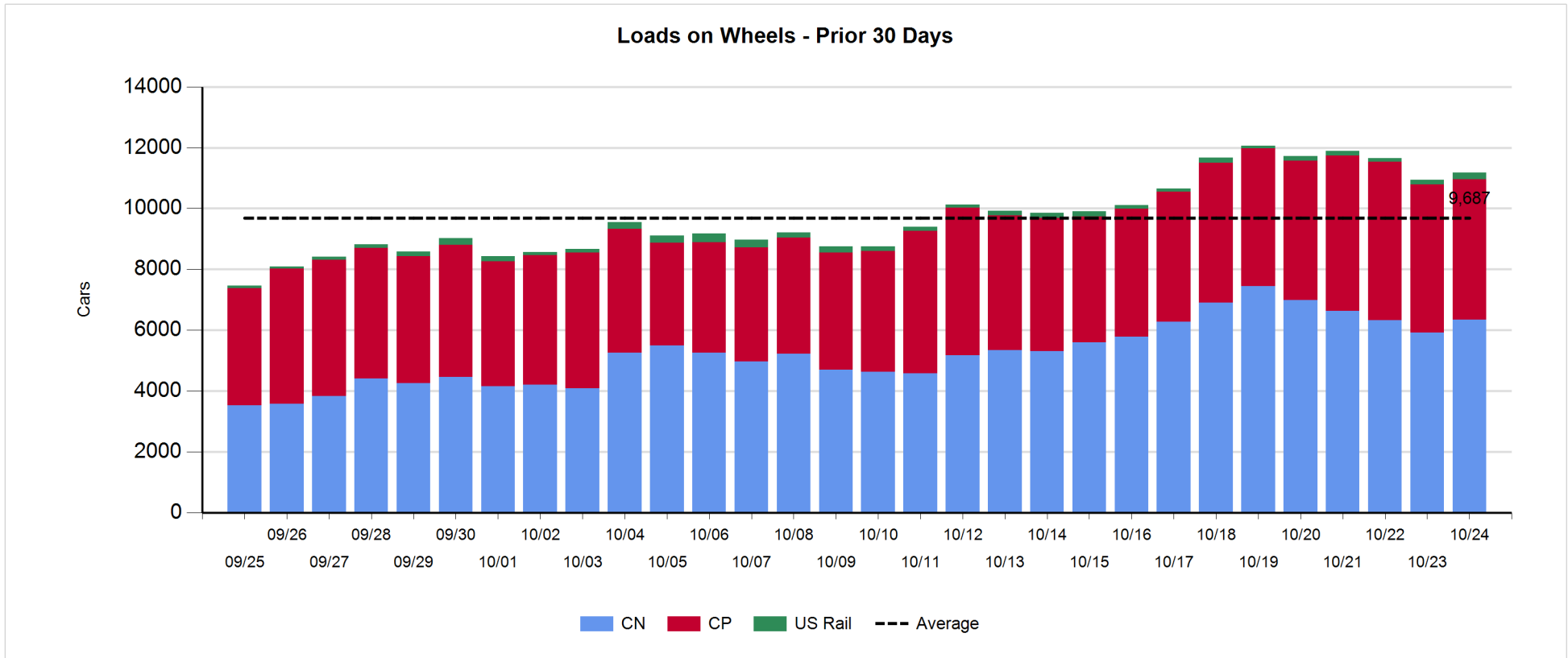
- CN and CP reported a total of 1,336 cars unloaded at the three major ports, 11% above the trailing 30-day average. Four days in Week 12 unloads now ahead of last week's pace by more than 600 unloads, marking higher unloads at Vancouver and Thunder Bay offset by lower unloads at Prince Rupert.
- Vancouver
 - 721 unloads reported by CN and CP at the Port of Vancouver; CN - 271 and CP - 450. Four days in Week 12 unloads are tracking ahead of last week's performance by 400 unloads.
 - There are 1,700 cars on site at Vancouver with nearly 500 cars arriving at the port in the last 24 hours.
 - CN and CP have 1,100 cars in British Columbia en route to Vancouver, with 450 cars at Kamloops and west, and 76% of traffic moving on CN.
- Prince Rupert
 - Prince Rupert reported 198 unloads, now at par with last week's unloads after four days.
 - Loads on wheels remain above 1,000 cars - currently at 1,909 cars.
 - There are about 650 cars west of Jasper en route to Prince Rupert.
 - There are fewer than 50 cars on site at Prince Rupert with 150 cars arriving at the port in the last 24 hours.
- Thunder Bay
 - 417 unloads were reported at Thunder Bay yesterday. Four days in Week 12 unloads are tracking ahead of last week's pace by 250 unloads.
 - There are more than 850 cars on site at Thunder Bay with 450 cars arriving at the port in the prior 24 hours.
 - There are more than 250 cars en route to Thunder Bay from Winnipeg and east.

Daily Loads on Wheels - 10/24/2019

	E Canada	Prince Rupert	Thunder Bay	USA/MEX	Vancouver	Total
CN	429	1,909	501	370	3,134	6,343
CP	39		1,444	165	2,971	4,619
Short Line	1				38	39
US Rail				170		170
	469	1,909	1,945	705	6,143	11,171

Change in Loads on Wheels - Prior 24 Hours

	E Canada	Prince Rupert	Thunder Bay	USA/MEX	Vancouver	Total
CN	-34	201	153	-94	200	426
CP	1		-259	28	-19	-249
Short Line	-6				-1	-7
US Rail				61		61
	-39	201	-106	-5	180	231

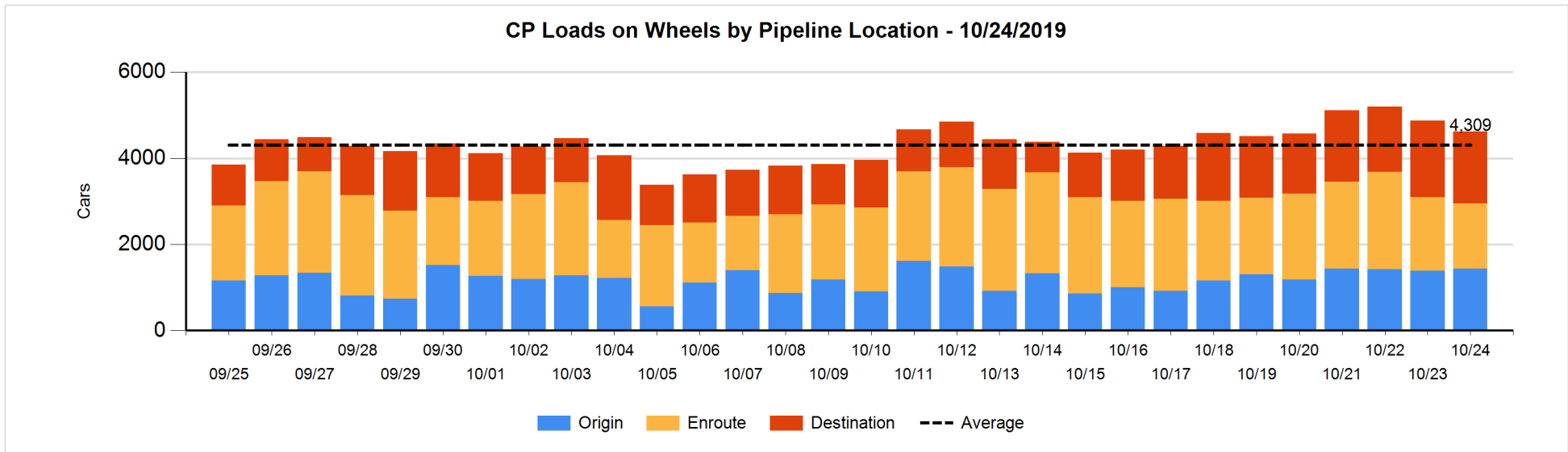
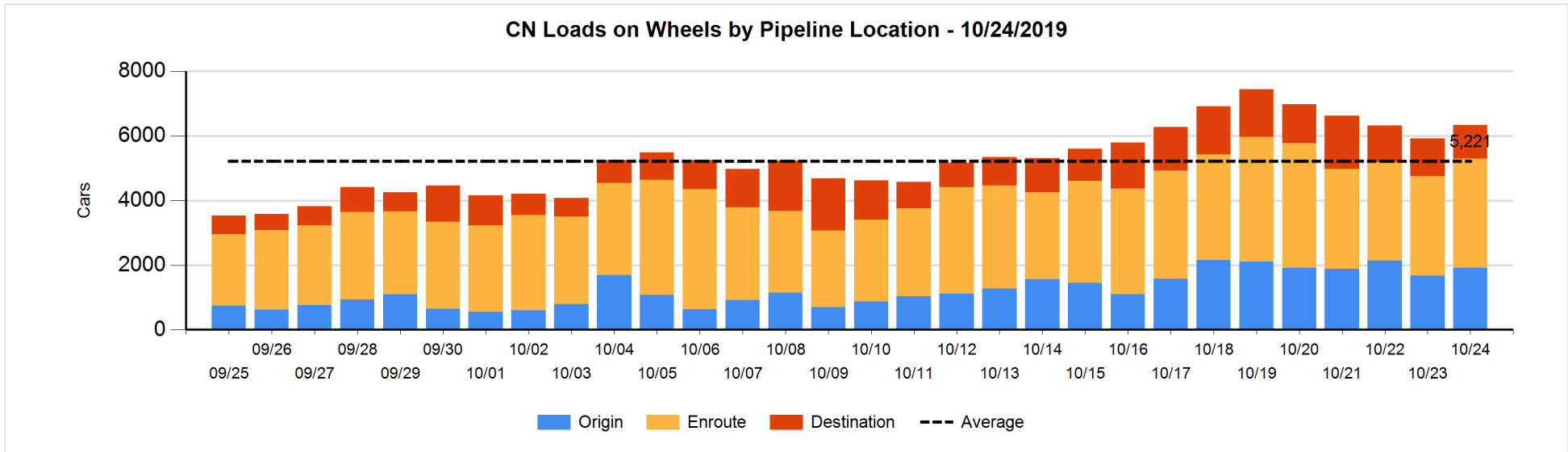


Daily Loads on Wheels By Pipeline Location - 10/24/2019

	E Canada	Prince Rupert	Thunder Bay	USA/MEX	Vancouver	Total
CN						
Origin	12	715	104	35	1,045	1,911
Enroute	359	1,159	205	242	1,421	3,386
Destination	58	35	192	93	668	1,046
	429	1,909	501	370	3,134	6,343
CP						
Origin	4		328	101	998	1,431
Enroute	34		430	63	987	1,514
Destination	1		686	1	986	1,674
	39		1,444	165	2,971	4,619
US Rail / Short Line						
Origin						
Enroute				128		128
Destination	1			42	38	81
	1			170	38	209

Change in Daily Loads on Wheels By Pipeline Location - Prior 24 Hours

	E Canada	Prince Rupert	Thunder Bay	USA/MEX	Vancouver	Total
CN						
Origin	-4	187	1	-94	151	241
Enroute	-63	68	121	-56	230	300
Destination	33	-54	31	56	-181	-115
	-34	201	153	-94	200	426
CP						
Origin	1		-6	74	-28	41
Enroute	0		-251	-25	81	-195
Destination	0		-2	-21	-72	-95
	1		-259	28	-19	-249
US Rail / Short Line						
Origin						
Enroute				77		77
Destination	-6			-16	-1	-23
	-6			61	-1	54

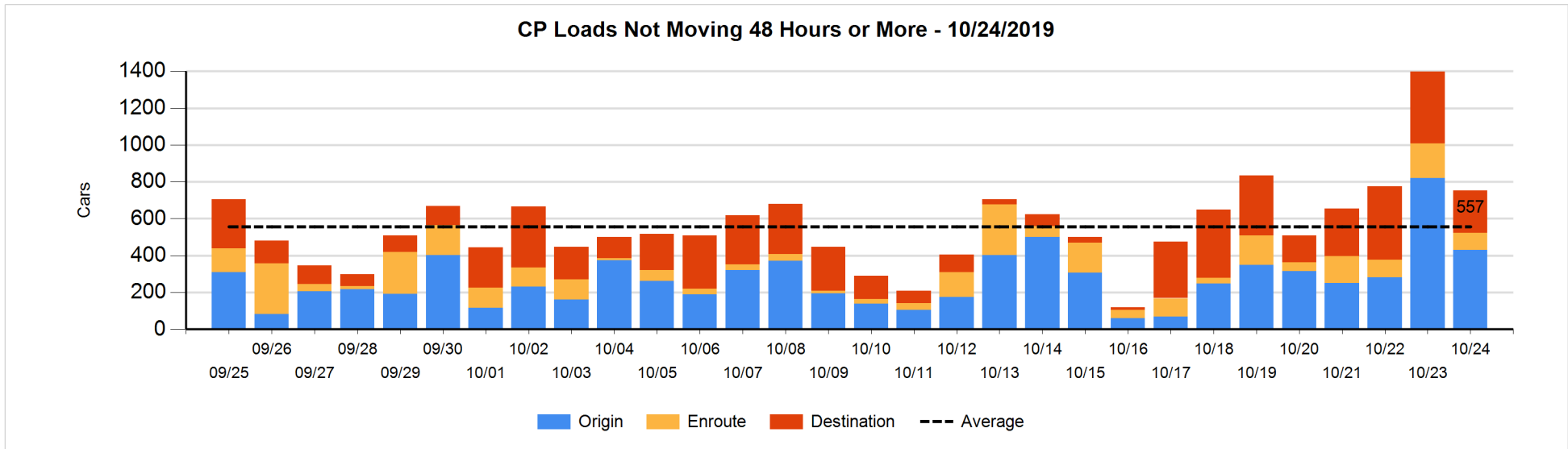
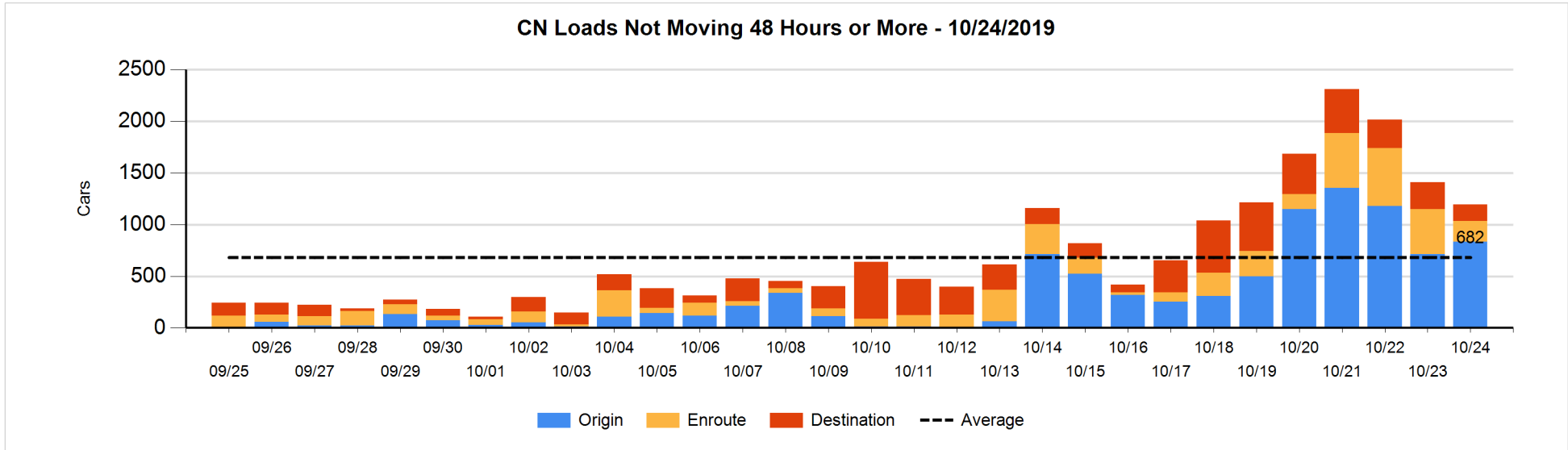


Loads Not Moving 48 Hours or More - 10/24/2019

	E Canada	Prince Rupert	Thunder Bay	USA/MEX	Vancouver	Total
CN						
Origin		359		11	462	832
Enroute	53	18	1	5	127	204
Destination	2	3	35	15	101	156
	55	380	36	31	690	1192
CP						
Origin	1			3	427	431
Enroute			82		10	92
Destination			138	1	90	229
	1		220	4	527	752
US Rail / Short Line						
Origin						
Enroute				8		8
Destination				25	22	47
				33	22	55

Change in Loads Not Moving 48 Hours or More - 10/24/2019

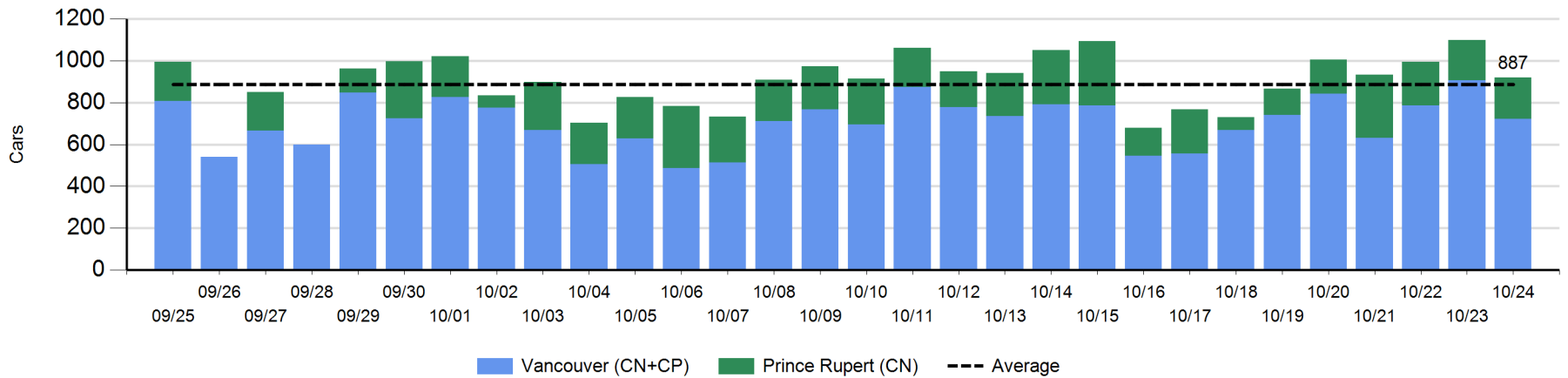
	E Canada	Prince Rupert	Thunder Bay	USA/MEX	Vancouver	Total
CN						
Origin	-14	56	-4	11	69	118
Enroute	-39	-89	0	2	-104	-230
Destination	0	-4	-50	3	-53	-104
	-53	-37	-54	16	-88	-216
CP						
Origin	1		-112	1	-279	-389
Enroute			13		-108	-95
Destination			-172	0	11	-161
	1		-271	1	-376	-645
US Rail / Short Line						
Origin						
Enroute				-3		-3
Destination				13	-8	5
				10	-8	2



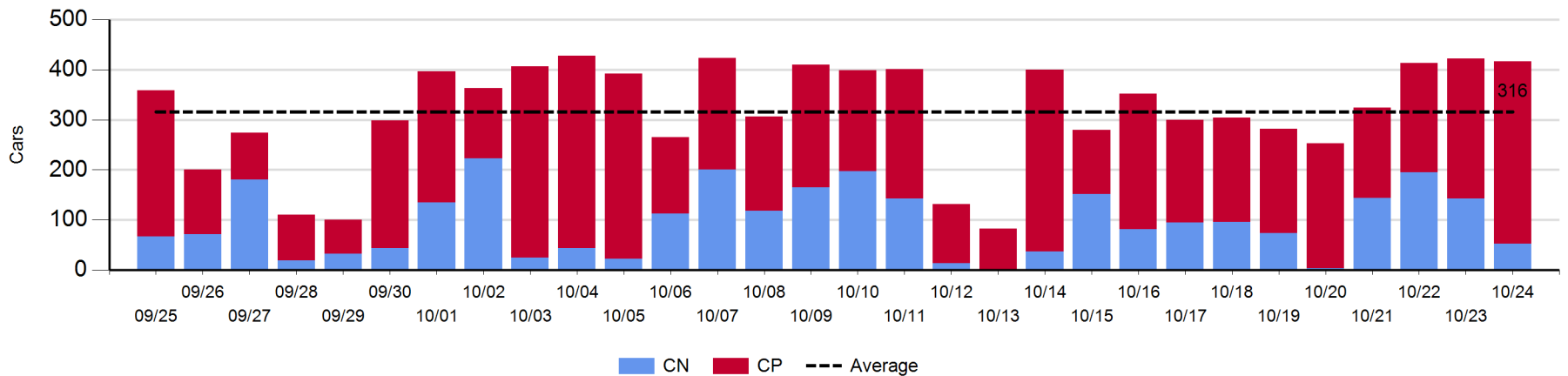
Port Unloads - 10/24/2019

	Prince Rupert	Vancouver	West Coast Total	Thunder Bay	Total
CN	198	271	469	53	522
CP		450	450	364	814
	198	721	919	417	1,336

West Coast Port Unloads - Prior 30 Days



Thunder Bay Port Unloads - Prior 30 Days



Port Terminal Status

Vancouver

Daily Activity for 10/24/2019

	Cars Arrived	Cars Received in Interchange	Cars Delivered in Interchange	Cars Placed for Unloading	Loads on Wheels at Destination As of 10/24/2019
CN	109	11	32	221	668
CP	375	32	25	372	986
SRY		14		17	38

Port Unloads

	10/24	10/23	Week To Date	Last Week
CN	271	434	1,277	2,013
CP	450	472	1,768	2,918
SRY	17	16	48	24

Age Profile of Loaded Cars Waiting Placement for Unloading

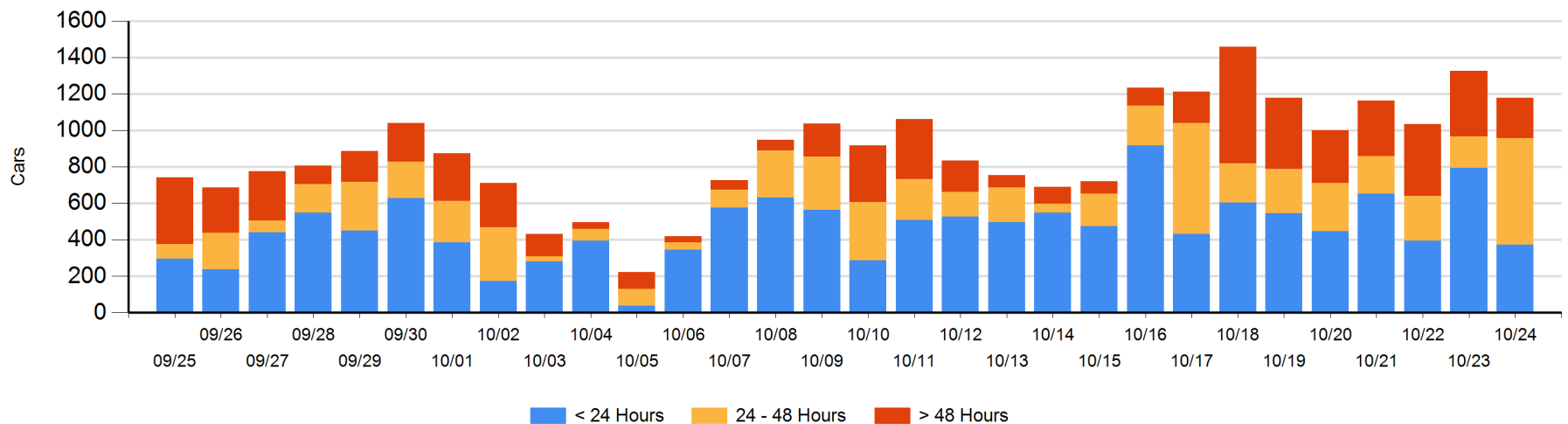
Today

	< 24 Hrs	24 - 48 Hrs	> 48-72 Hrs	> 72 Hrs	Total On Hand
CN	109	255	18	86	468
CP	264	329	33	83	709
SRY		1			1

Change in Last 24 Hours

	< 24 Hrs	24-48 Hrs	48 - 72 Hrs	> 72 Hrs
CN	-197	147	-57	-4
CP	-223	263	-49	-28
SRY	-1	1		

Loaded Cars on Hand Vancouver Waiting for Placement - Last 30 Days All Railways



Port Terminal Status

Prince Rupert

Daily Activity for 10/24/2019

	Cars Arrived	Cars Received in Interchange	Cars Delivered in Interchange	Cars Placed for Unloading	Loads on Wheels at Destination As of 10/24/2019
CN	149			148	35

Port Unloads

	10/24	10/23	Week To Date	Last Week
CN	198	192	899	1,258

Age Profile of Loaded Cars Waiting Placement for Unloading

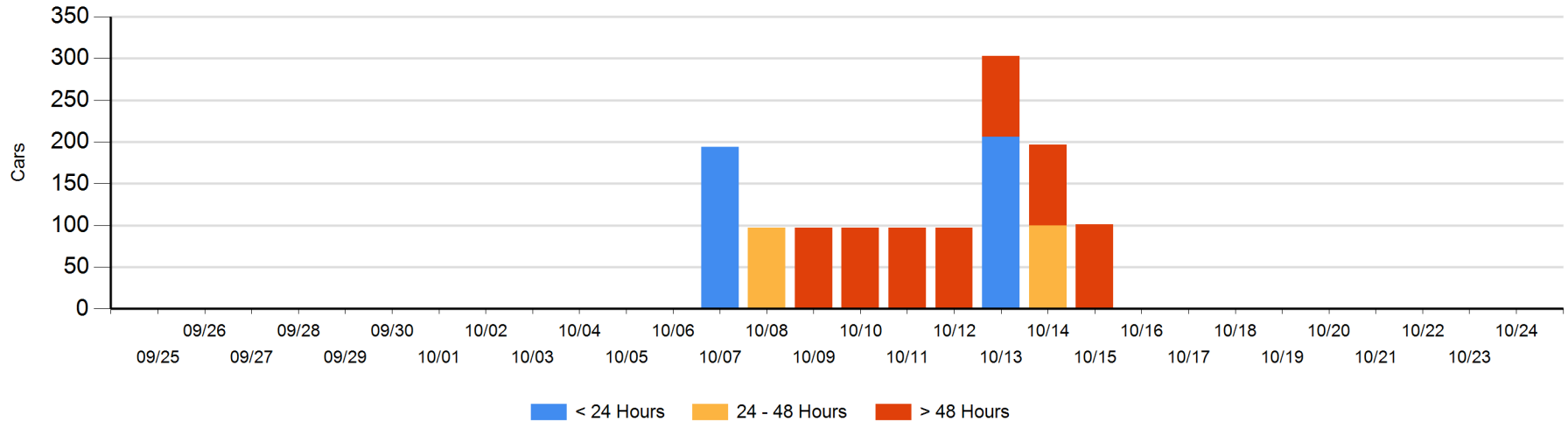
Today

	< 24 Hrs	24 - 48 Hrs	> 48-72 Hrs	> 72 Hrs	Total On Hand
CN				1	1

Change in Last 24 Hours

	< 24 Hrs	24-48 Hrs	48 - 72 Hrs	> 72 Hrs
CN				0

Loaded Cars on Hand Prince Rupert Waiting for Placement - Last 30 Days All Railways



Port Terminal Status

Thunder Bay

Daily Activity for 10/24/2019

	Cars Arrived	Cars Received in Interchange	Cars Delivered in Interchange	Cars Placed for Unloading	Loads on Wheels at Destination As of 10/24/2019
CN	83			40	192
CP	363			356	686

Port Unloads

	10/24	10/23	Week To Date	Last Week
CN	53	143	535	537
CP	364	279	1,041	1,634

Age Profile of Loaded Cars Waiting Placement for Unloading

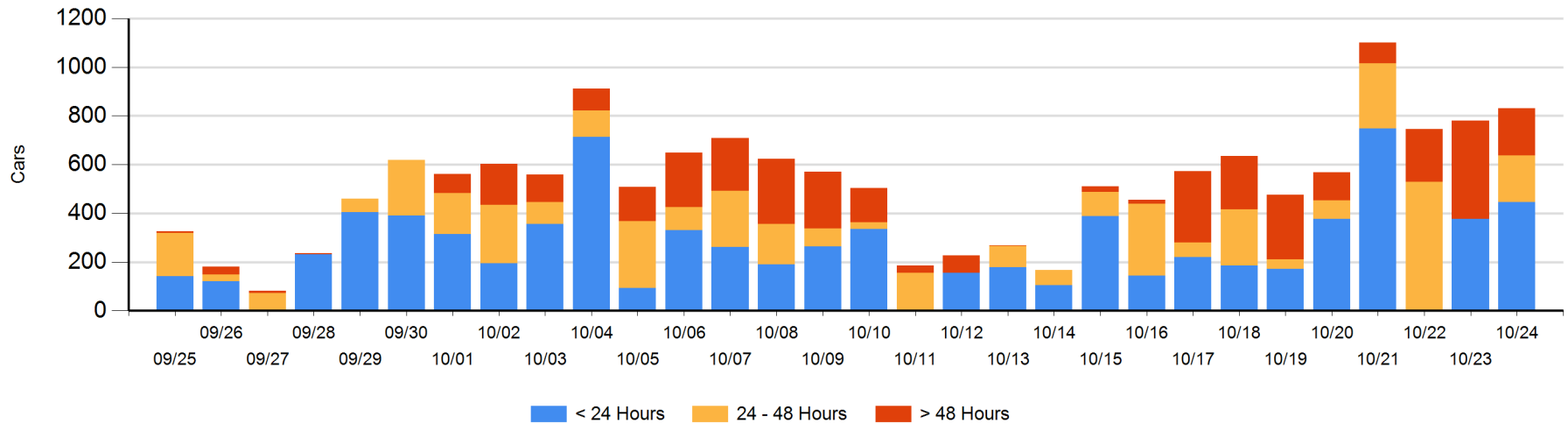
Today

	< 24 Hrs	24 - 48 Hrs	> 48-72 Hrs	> 72 Hrs	Total On Hand
CN	83	7		55	145
CP	363	185		137	685

Change in Last 24 Hours

	< 24 Hrs	24-48 Hrs	48 - 72 Hrs	> 72 Hrs
CN	76	7	-89	52
CP	-6	185	-146	-29

Loaded Cars on Hand Thunder Bay Waiting for Placement - Last 30 Days All Railways



Measurement Definitions

Loads on Wheels	<p>Count of loaded rail cars including all rail cars that have been released loaded at origin and have not been reported by the railway as unloaded at destination.</p> <p>Counts include all rail cars (hopper cars and boxcars) moving within a pipeline.</p>
Loads Not Moving	<p>Loaded rail cars for which the railways have not reported a movement event for 48 hours or more whether the rail car is at origin, enroute or at destination.</p>
Port Unloads	<p>Count of rail cars reported by railways as unloaded at the western port destinations of Vancouver, Prince Rupert and Thunder Bay.</p> <p>Unload counts include all rail cars (hopper cars and boxcars) unloaded by all receivers including major port terminals, transloaders and other receivers.</p>
Cars Arrived	<p>Count of rail cars reported as arrived at the destination railway terminal.</p>
Cars Received in Interchange	<p>Count of rail cars received in interchange by each railway within a destination railway terminal. Interchange activity is tracked for the Vancouver and Thunder Bay pipelines as applicable.</p>
Cars Delivered in Interchange	<p>Count of rail cars delivered in interchange by each railway within a destination railway terminal. Interchange activity is tracked for the Vancouver and Thunder Bay pipelines as applicable.</p>
Cars Placed for Unloading	<p>Count of rail cars reported by the railways as placed loaded at the receiver's facility for unloading.</p>
Loads on Wheels at Destination	<p>Count of rail cars that remain under load within the destination railway terminal including rail cars that have been reported as placed for unloading but not yet reported as unloaded.</p>
Waiting Placement for Unloading	<p>Count of rail cars that have been reported as arrived at the destination railway terminal but not reported as placed for unloading by the railway.</p> <p>For the Ports of Vancouver, Prince Rupert and Thunder Bay the count of rail cars waiting placement for unloading is categorized by age – i.e. the elapsed time from arrival at destination to the current report date.</p>