

SPEED READ

- Loads on wheels rose overnight, marking an increase in both CN and CP volumes. On a net basis, volumes increased due to higher traffic in the Thunder Bay, E. Canada and Vancouver corridors offset by lower volumes in the Prince Rupert and USA/MEX corridors.
- Network fluidity deteriorated overnight, led by a rise in idle car counts on both CN and CP by 14% (+192) and 3% (+17), respectively. The total count of cars for 4+ days on both railways rose 29% (+189) overnight - now at 834 cars.
- Week 12 unloads finished ahead of prior week's performance by more than 950 unloads, reflecting improved week over week performance across all three major ports - Vancouver, Thunder Bay and Prince Rupert.

Loads on Wheels

- Loads on wheels rose 2% (+259) overnight, due to higher volumes on both CN and CP - combined total at 11,871 and 18% above the trailing 30-day average.
- On a net basis, the increase in loads on wheels reflects higher traffic in the Thunder Bay, E. Canada and Vancouver corridors offset by lower volumes in the Prince Rupert and USA/MEX corridors.
- CN volumes rose marginally by 1% (+91) overnight, with higher volumes in the E. Canada and Thunder Bay corridors offset by reduced volumes in the Prince Rupert, Vancouver and USA/MEX corridors. System wide CN loads on wheels now at 6,531 and 19% above the trailing 30-day average.
- CP volumes increased 3% (+167) overnight and have now increased for the third consecutive day, driven by a rise in traffic across all corridors other than E. Canada. CP system wide loads on wheels presently at 5,016 and 15% above the trailing 30-day average.
- Vancouver now at 6,232, rose for the fourth consecutive day, up (+27) overnight, now 19% above the trailing 30-day average.
- The Prince Rupert pipeline presently at 1,918, decreased 7% (-146) overnight, and 11% above the trailing 30-day average.
- Thunder Bay volumes increased 12% (+221) overnight - presently at 2,039 and 5% above the trailing 30-day average, with 64% of traffic moving on CP.

Hopper Car Rationing

- No hopper cars were rationed by either CN or CP in week 11.

Loads Not Moving

- **The count of cars not moving for 48+ hours rose 10% (+209) overnight, reflecting higher counts on both CN and CP. Idle car counts currently at 2,225 and 63% above the trailing 30-day average.**
- CN
 - **The count of idle cars for 48+ hours rose 14% (+192) overnight - presently at 1,588 cars.**
 - The number of cars idle for 4+ days rose 17% (+100) overnight - now at 704 cars.
 - The count of cars not moving for 7+ days fell marginally by 1% (-5) overnight - presently at 341 cars.
 - Vancouver represents 68% of all idle cars.
 - In total 65% of all idle cars are dwelling at origin locations.
- CP
 - **CP idle car counts for 48+ hours rose 3% (+17) overnight - now at 637 cars.**
 - The number of cars idle for 4+ days increased 217% (+89) overnight - presently at 130 cars.
 - The number of cars idle for 7+ days decreased 60% (-6) overnight - currently at 4 cars, the lowest seen in the last 30 days.

- Vancouver accounts for 69% of all idle cars.
- In total 20% of all idle cars are dwelling at origin locations.

Port Performance

- CN and CP reported a total of 1,050 cars unloaded at the three major ports, 14% below the trailing 30-day average. Week 12 unloads finished ahead of last week's pace by more than 950 unloads, reflecting higher unloads across all three major ports - Vancouver, Thunder Bay and Prince Rupert.
- Vancouver
 - 616 unloads reported by CN and CP at the Port of Vancouver; CN - 328 and CP - 288. Week 12 unloads finished ahead of last week's performance by about 300 unloads.
 - There are 1,250 cars on site at Vancouver with more than 700 cars arriving at the port in the last 24 hours.
 - CN and CP have about 1,750 cars in British Columbia en route to Vancouver, with 950 cars at Kamloops and west, and 67% of traffic moving on CP.
- Prince Rupert
 - Prince Rupert reported 251 unloads, finished ahead of last week's unloads by more than 250 unloads.
 - Loads on wheels remain above 1,000 cars - presently at 1,918 cars.
 - There are 700 cars west of Jasper en route to Prince Rupert.
 - There are 50 cars on site at Prince Rupert with zero cars arriving at the port in the last 24 hours.
- Thunder Bay
 - 183 unloads were reported at Thunder Bay yesterday. Week 12 unloads finished ahead of last week's pace by about 450 unloads.
 - There are more than 850 cars on site at Thunder Bay with 350 cars arriving at the port in the prior 24 hours.
 - There are 250 cars en route to Thunder Bay from Winnipeg and east.

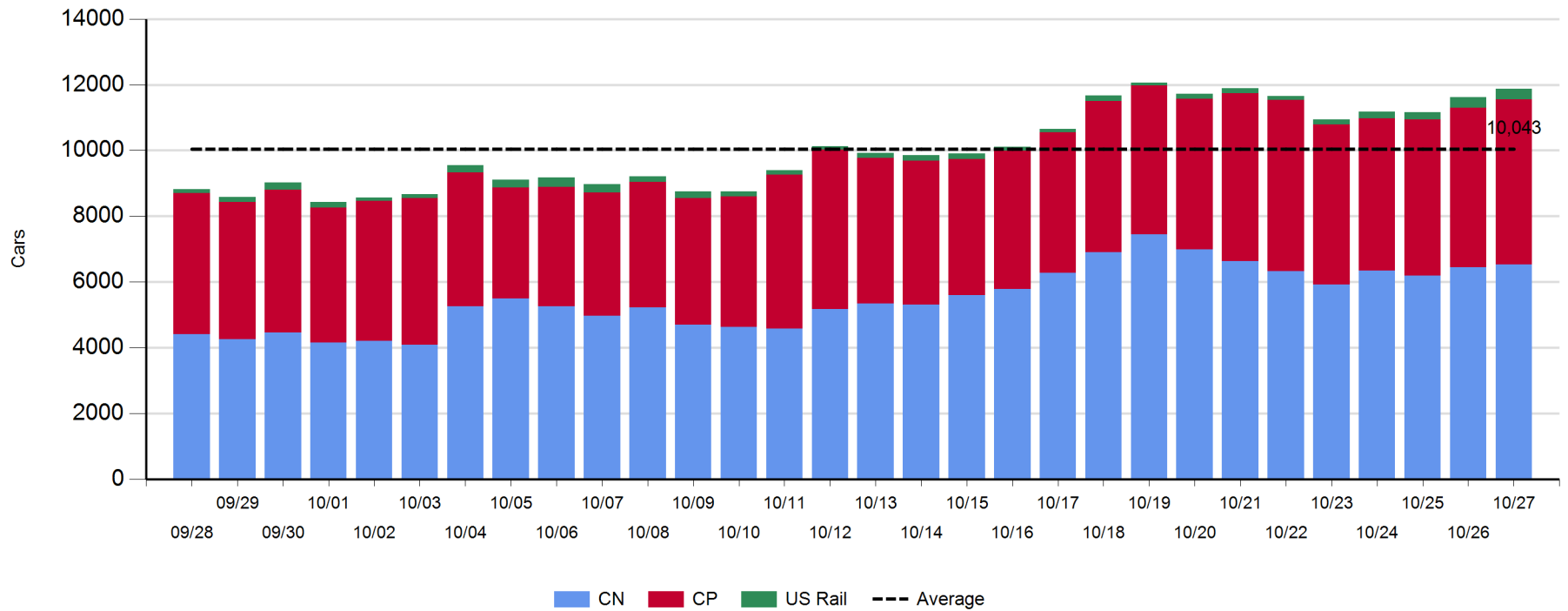
Daily Loads on Wheels - 10/27/2019

| | E Canada | Prince Rupert | Thunder Bay | USA/MEX | Vancouver | Total |
|------------|----------|---------------|-------------|---------|-----------|--------|
| CN | 720 | 1,918 | 743 | 320 | 2,830 | 6,531 |
| CP | 39 | | 1,296 | 334 | 3,347 | 5,016 |
| Short Line | 13 | | | | 55 | 68 |
| US Rail | | | | 256 | | 256 |
| | 772 | 1,918 | 2,039 | 910 | 6,232 | 11,871 |

Change in Loads on Wheels - Prior 24 Hours

| | E Canada | Prince Rupert | Thunder Bay | USA/MEX | Vancouver | Total |
|------------|----------|---------------|-------------|---------|-----------|-------|
| CN | 170 | -146 | 105 | -5 | -33 | 91 |
| CP | 0 | | 116 | 5 | 46 | 167 |
| Short Line | -12 | | | | 14 | 2 |
| US Rail | | | | -1 | | -1 |
| | 158 | -146 | 221 | -1 | 27 | 259 |

Loads on Wheels - Prior 30 Days

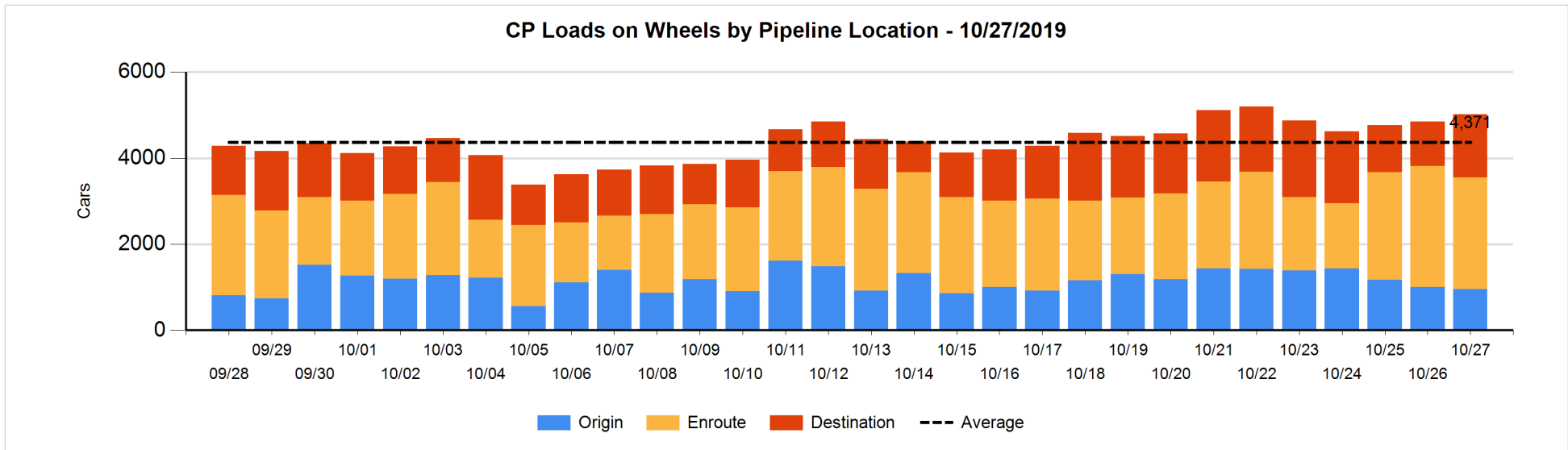
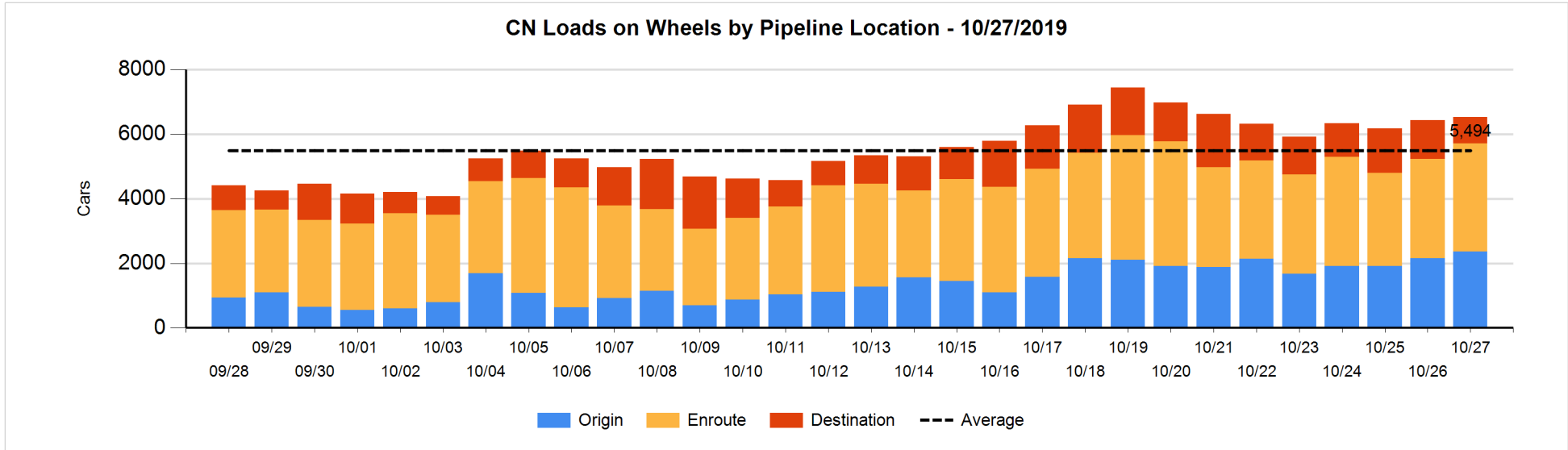


Daily Loads on Wheels By Pipeline Location - 10/27/2019

| | E Canada | Prince Rupert | Thunder Bay | USA/MEX | Vancouver | Total |
|----------------------|----------|---------------|-------------|---------|-----------|-------|
| CN | | | | | | |
| Origin | 197 | 631 | 192 | 105 | 1,237 | 2,362 |
| Enroute | 497 | 1,244 | 305 | 156 | 1,156 | 3,358 |
| Destination | 26 | 43 | 246 | 59 | 437 | 811 |
| | 720 | 1,918 | 743 | 320 | 2,830 | 6,531 |
| CP | | | | | | |
| Origin | 1 | | 363 | 117 | 477 | 958 |
| Enroute | 38 | | 318 | 115 | 2,120 | 2,591 |
| Destination | | | 615 | 102 | 750 | 1,467 |
| | 39 | | 1,296 | 334 | 3,347 | 5,016 |
| US Rail / Short Line | | | | | | |
| Origin | | | | | | |
| Enroute | | | | 140 | | 140 |
| Destination | 13 | | | 116 | 55 | 184 |
| | 13 | | | 256 | 55 | 324 |

Change in Daily Loads on Wheels By Pipeline Location - Prior 24 Hours

| | E Canada | Prince Rupert | Thunder Bay | USA/MEX | Vancouver | Total |
|----------------------|----------|---------------|-------------|---------|-----------|-------|
| CN | | | | | | |
| Origin | 147 | 1 | -99 | -37 | 200 | 212 |
| Enroute | 33 | 108 | 145 | 36 | -38 | 284 |
| Destination | -10 | -255 | 59 | -4 | -195 | -405 |
| | 170 | -146 | 105 | -5 | -33 | 91 |
| CP | | | | | | |
| Origin | 0 | | 198 | -49 | -197 | -48 |
| Enroute | 0 | | -192 | 12 | -38 | -218 |
| Destination | | | 110 | 42 | 281 | 433 |
| | 0 | | 116 | 5 | 46 | 167 |
| US Rail / Short Line | | | | | | |
| Origin | | | | | | |
| Enroute | | | | -25 | | -25 |
| Destination | -12 | | | 24 | 14 | 26 |
| | -12 | | | -1 | 14 | 1 |

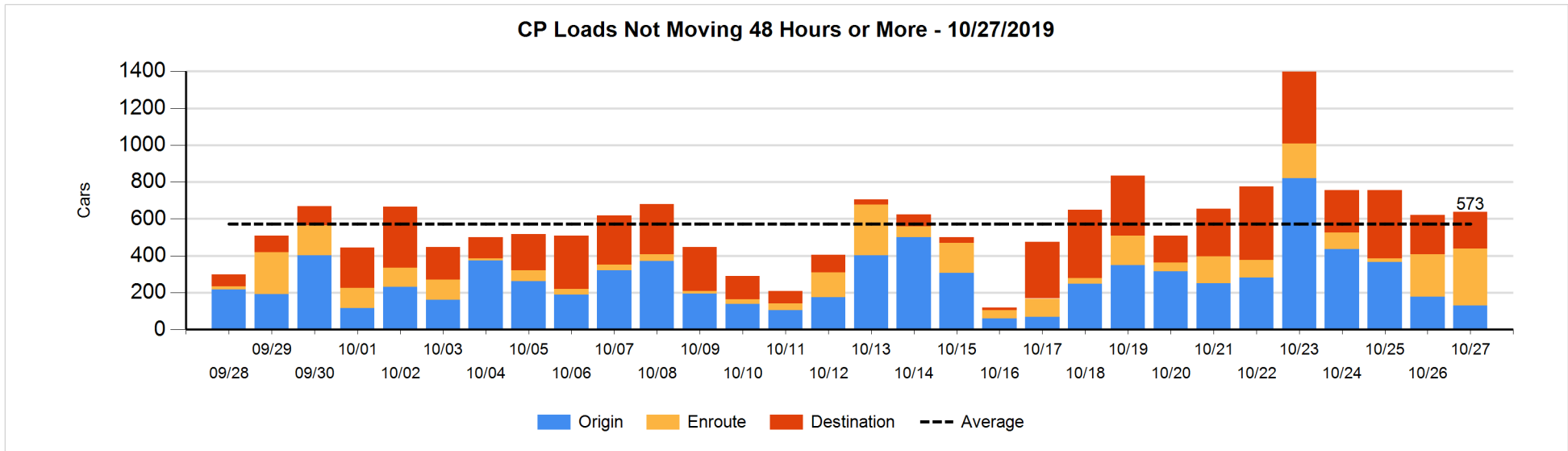
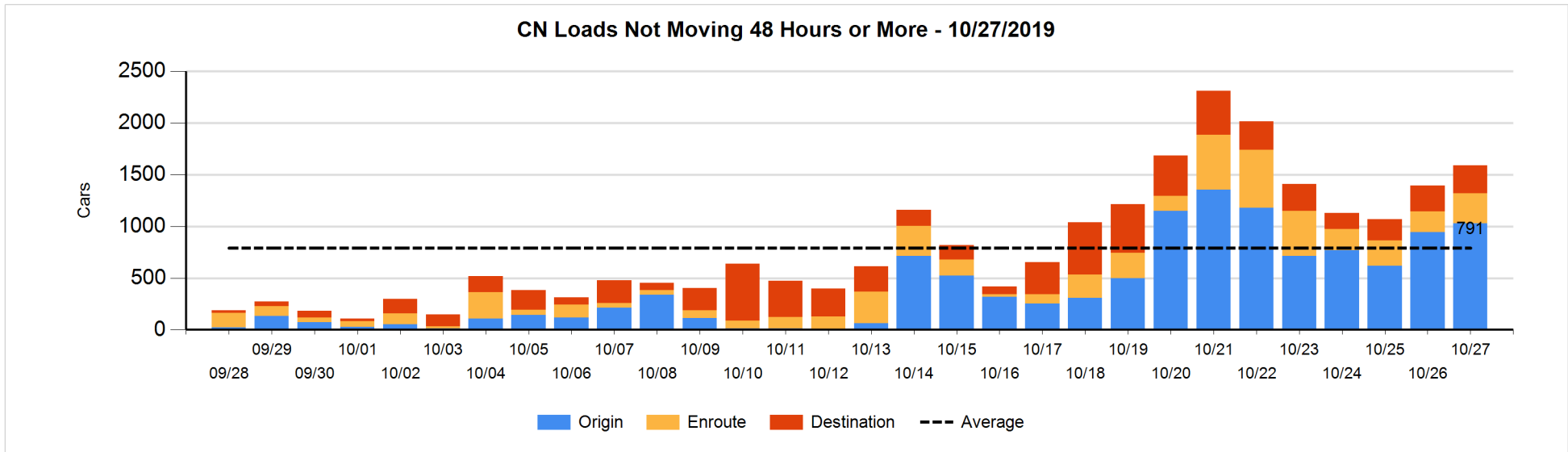


Loads Not Moving 48 Hours or More - 10/27/2019

| | E Canada | Prince Rupert | Thunder Bay | USA/MEX | Vancouver | Total |
|-----------------------------|----------|---------------|-------------|---------|-----------|-------|
| CN | | | | | | |
| Origin | | 309 | | 2 | 720 | 1031 |
| Enroute | 43 | 4 | 5 | 19 | 217 | 288 |
| Destination | 9 | 1 | 57 | 58 | 144 | 269 |
| | 52 | 314 | 62 | 79 | 1081 | 1588 |
| CP | | | | | | |
| Origin | 1 | | | 117 | 11 | 129 |
| Enroute | | | 2 | 5 | 303 | 310 |
| Destination | | | 29 | 42 | 127 | 198 |
| | 1 | | 31 | 164 | 441 | 637 |
| US Rail / Short Line | | | | | | |
| Origin | | | | | | |
| Enroute | | | | 12 | | 12 |
| Destination | | | | 41 | 22 | 63 |
| | | | | 53 | 22 | 75 |

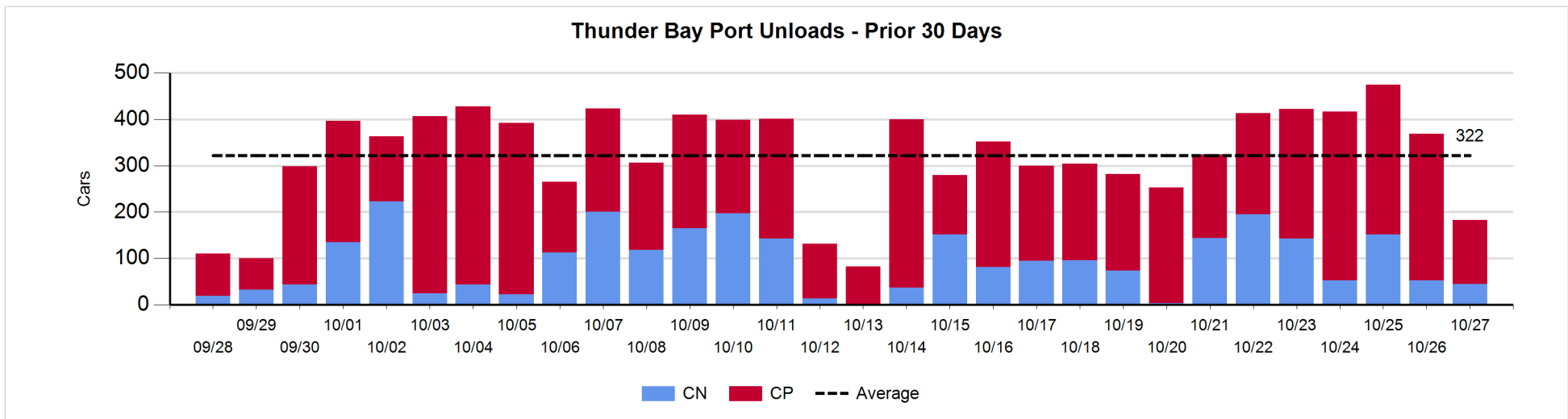
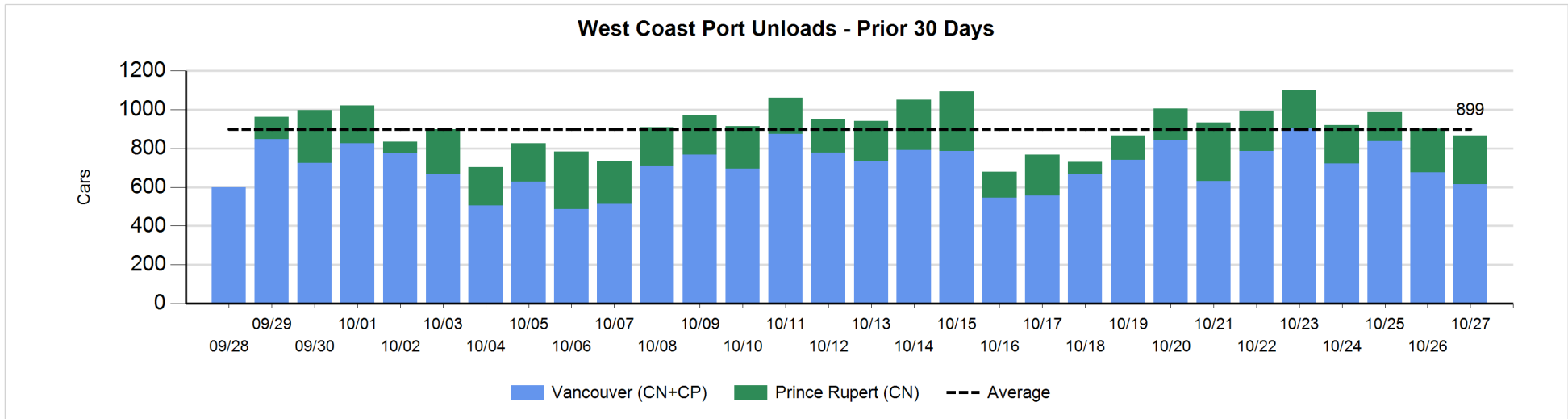
Change in Loads Not Moving 48 Hours or More - 10/27/2019

| | E Canada | Prince Rupert | Thunder Bay | USA/MEX | Vancouver | Total |
|-----------------------------|----------|---------------|-------------|---------|-----------|-------|
| CN | | | | | | |
| Origin | | 104 | | -33 | 15 | 86 |
| Enroute | -4 | -3 | 3 | -2 | 95 | 89 |
| Destination | 3 | -1 | 52 | 23 | -60 | 17 |
| | -1 | 100 | 55 | -12 | 50 | 192 |
| CP | | | | | | |
| Origin | 1 | | | 51 | -101 | -49 |
| Enroute | | | -1 | 5 | 76 | 80 |
| Destination | | | -61 | 42 | 5 | -14 |
| | 1 | | -62 | 98 | -20 | 17 |
| US Rail / Short Line | | | | | | |
| Origin | | | | | | |
| Enroute | | | | 3 | | 3 |
| Destination | | | | 7 | 10 | 17 |
| | | | | 10 | 10 | 20 |



Port Unloads - 10/27/2019

| | Prince Rupert | Vancouver | West Coast Total | Thunder Bay | Total |
|----|---------------|-----------|------------------|-------------|-------|
| CN | 251 | 328 | 579 | 45 | 624 |
| CP | | 288 | 288 | 138 | 426 |
| | 251 | 616 | 867 | 183 | 1,050 |



Port Terminal Status

Vancouver

Daily Activity for 10/27/2019

| | Cars Arrived | Cars Received in Interchange | Cars Delivered in Interchange | Cars Placed for Unloading | Loads on Wheels at Destination As of 10/27/2019 |
|-----|--------------|------------------------------|-------------------------------|---------------------------|---|
| CN | 255 | 23 | 139 | 236 | 437 |
| CP | 461 | 137 | 35 | 282 | 750 |
| SRY | | 14 | | 4 | 55 |

Port Unloads

| | 10/27 | 10/26 | Week To Date | Last Week |
|-----|-------|-------|--------------|-----------|
| CN | 328 | 413 | 2,381 | 2,013 |
| CP | 288 | 264 | 2,793 | 2,918 |
| SRY | | 9 | 61 | 24 |

Age Profile of Loaded Cars Waiting Placement for Unloading

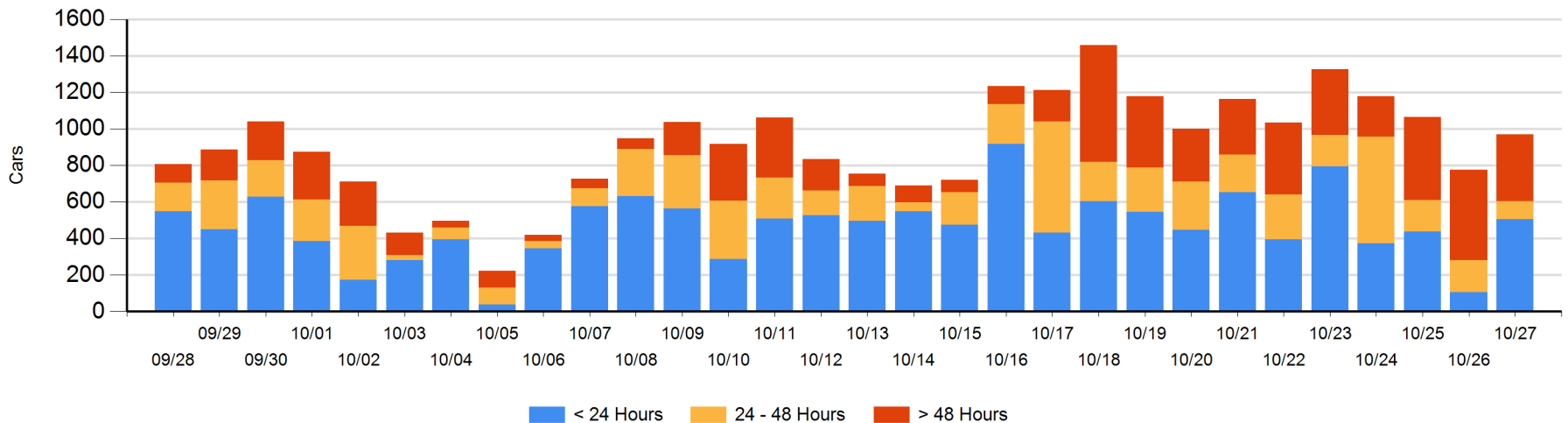
Today

| | < 24 Hrs | 24 - 48 Hrs | > 48-72 Hrs | > 72 Hrs | Total On Hand |
|-----|----------|-------------|-------------|----------|---------------|
| CN | 216 | 71 | 45 | 125 | 457 |
| CP | 289 | 29 | 19 | 175 | 512 |
| SRY | | | | 1 | 1 |

Change in Last 24 Hours

| | < 24 Hrs | 24-48 Hrs | 48 - 72 Hrs | > 72 Hrs |
|-----|----------|-----------|-------------|----------|
| CN | 140 | -83 | 20 | -46 |
| CP | 260 | 6 | -90 | -13 |
| SRY | | | | 0 |

Loaded Cars on Hand Vancouver Waiting for Placement - Last 30 Days All Railways



Port Terminal Status

Prince Rupert

Daily Activity for 10/27/2019

| | Cars Arrived | Cars Received in Interchange | Cars Delivered in Interchange | Cars Placed for Unloading | Loads on Wheels at Destination As of 10/27/2019 |
|----|--------------|------------------------------|-------------------------------|---------------------------|---|
| CN | | | | | 43 |

Port Unloads

| | 10/27 | 10/26 | Week To Date | Last Week |
|----|-------|-------|--------------|-----------|
| CN | 251 | 224 | 1,523 | 1,258 |

Age Profile of Loaded Cars Waiting Placement for Unloading

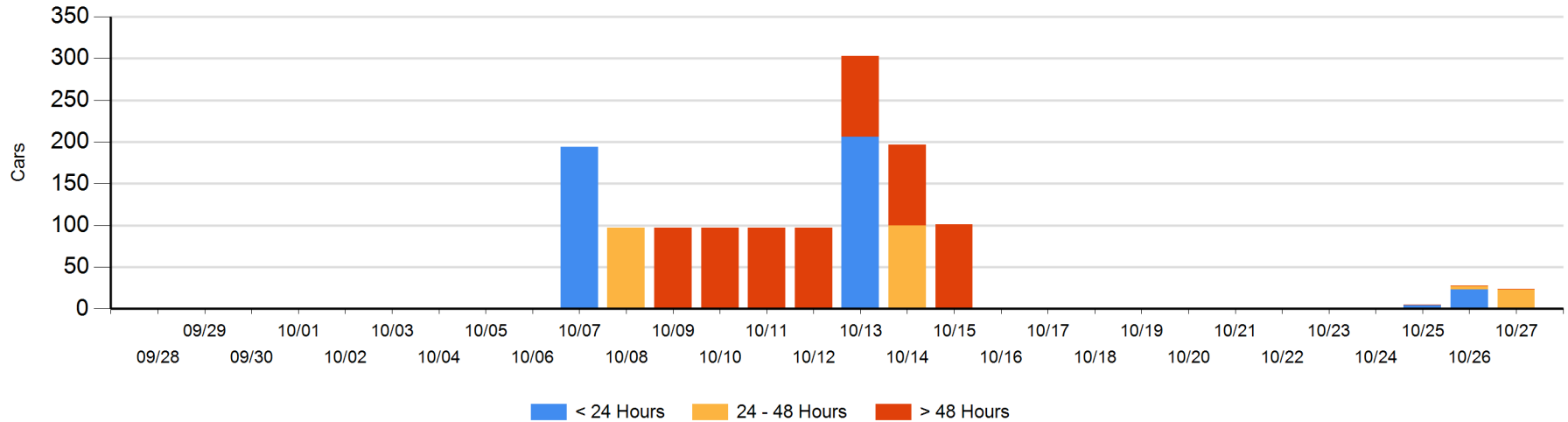
Today

| | < 24 Hrs | 24 - 48 Hrs | > 48-72 Hrs | > 72 Hrs | Total On Hand |
|----|----------|-------------|-------------|----------|---------------|
| CN | | 23 | | 1 | 24 |

Change in Last 24 Hours

| | < 24 Hrs | 24-48 Hrs | 48 - 72 Hrs | > 72 Hrs |
|----|----------|-----------|-------------|----------|
| CN | -23 | 19 | | 0 |

Loaded Cars on Hand Prince Rupert Waiting for Placement - Last 30 Days All Railways



Port Terminal Status

Thunder Bay

Daily Activity for 10/27/2019

| | Cars Arrived | Cars Received in Interchange | Cars Delivered in Interchange | Cars Placed for Unloading | Loads on Wheels at Destination As of 10/27/2019 |
|----|--------------|------------------------------|-------------------------------|---------------------------|---|
| CN | 104 | | | | 246 |
| CP | 248 | | | 187 | 615 |

Port Unloads

| | 10/27 | 10/26 | Week To Date | Last Week |
|----|-------|-------|--------------|-----------|
| CN | 45 | 53 | 785 | 537 |
| CP | 138 | 316 | 1,817 | 1,634 |

Age Profile of Loaded Cars Waiting Placement for Unloading

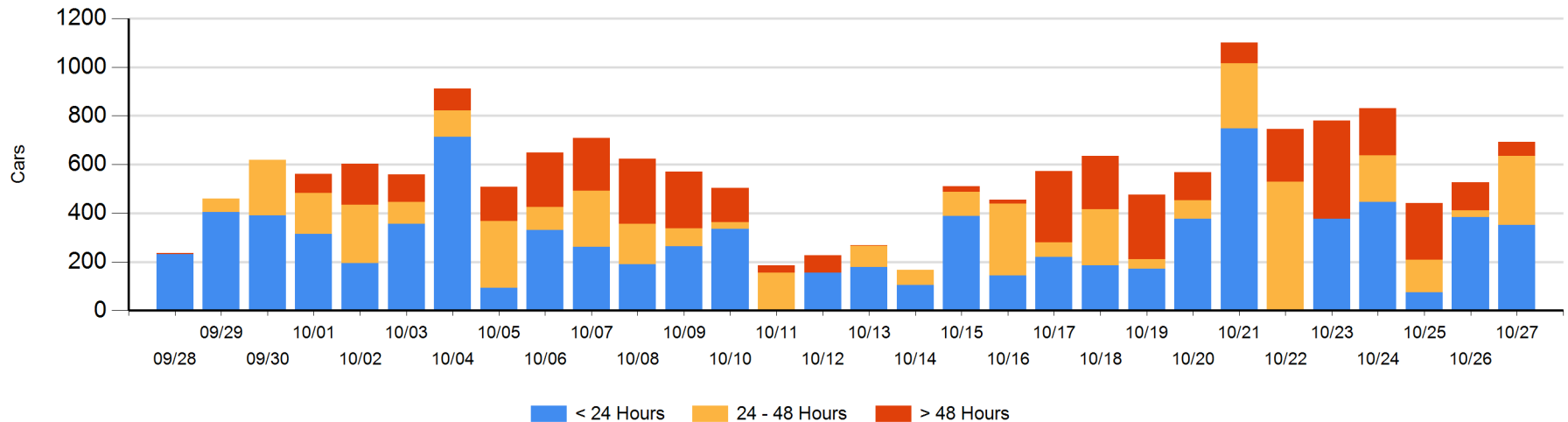
Today

| | < 24 Hrs | 24 - 48 Hrs | > 48-72 Hrs | > 72 Hrs | Total On Hand |
|----|----------|-------------|-------------|----------|---------------|
| CN | 104 | | | 26 | 130 |
| CP | 248 | 283 | 14 | 17 | 562 |

Change in Last 24 Hours

| | < 24 Hrs | 24-48 Hrs | 48 - 72 Hrs | > 72 Hrs |
|----|----------|-----------|-------------|----------|
| CN | 104 | | | 0 |
| CP | -135 | 254 | -21 | -37 |

Loaded Cars on Hand Thunder Bay Waiting for Placement - Last 30 Days All Railways



Measurement Definitions

| | |
|---------------------------------|---|
| Loads on Wheels | <p>Count of loaded rail cars including all rail cars that have been released loaded at origin and have not been reported by the railway as unloaded at destination.</p> <p>Counts include all rail cars (hopper cars and boxcars) moving within a pipeline.</p> |
| Loads Not Moving | <p>Loaded rail cars for which the railways have not reported a movement event for 48 hours or more whether the rail car is at origin, enroute or at destination.</p> |
| Port Unloads | <p>Count of rail cars reported by railways as unloaded at the western port destinations of Vancouver, Prince Rupert and Thunder Bay.</p> <p>Unload counts include all rail cars (hopper cars and boxcars) unloaded by all receivers including major port terminals, transloaders and other receivers.</p> |
| Cars Arrived | <p>Count of rail cars reported as arrived at the destination railway terminal.</p> |
| Cars Received in Interchange | <p>Count of rail cars received in interchange by each railway within a destination railway terminal. Interchange activity is tracked for the Vancouver and Thunder Bay pipelines as applicable.</p> |
| Cars Delivered in Interchange | <p>Count of rail cars delivered in interchange by each railway within a destination railway terminal. Interchange activity is tracked for the Vancouver and Thunder Bay pipelines as applicable.</p> |
| Cars Placed for Unloading | <p>Count of rail cars reported by the railways as placed loaded at the receiver's facility for unloading.</p> |
| Loads on Wheels at Destination | <p>Count of rail cars that remain under load within the destination railway terminal including rail cars that have been reported as placed for unloading but not yet reported as unloaded.</p> |
| Waiting Placement for Unloading | <p>Count of rail cars that have been reported as arrived at the destination railway terminal but not reported as placed for unloading by the railway.</p> <p>For the Ports of Vancouver, Prince Rupert and Thunder Bay the count of rail cars waiting placement for unloading is categorized by age – i.e. the elapsed time from arrival at destination to the current report date.</p> |