

**SPEED READ**

- Loads on wheels gained overnight, reflecting a rise in CN traffic offset by reduced CP volumes. On a net basis, volumes increased due to higher traffic in the Prince Rupert, Vancouver and E. Canada corridors offset by reduced traffic in the Thunder Bay and USA/MEX corridors.
- Network fluidity deteriorated overnight, led by a rise in idle car counts on both CN and CP by 9% (+142) and 36% (+232), respectively. The total count of cars for 4+ days on both railways increased for the third consecutive day, up 26% (+220) overnight - currently at 1,054 cars, the highest seen in the last 30 days.
- One day in Week 13 unloads now ahead of prior week's performance by 50 unloads, marking improved week over week performance at Thunder Bay and Vancouver offset by reduced unloads at Prince Rupert.

=====

**Loads on Wheels**

- Loads on wheels gained for the third consecutive day, up 2% (+182) overnight, due to higher traffic on CN offset by reduced traffic on CP - combined total at 12,054 and 19% above the trailing 30-day average.
- On a net basis, the increase in loads on wheels reflects higher traffic in the Prince Rupert, Vancouver and E. Canada corridors offset by reduced traffic in the Thunder Bay and USA/MEX corridors.
- CN volumes rose 4% (+277) overnight and have now increased for the third consecutive day, with higher traffic across all corridors other than Thunder Bay. System wide CN loads on wheels presently at 6,808 and 22% above the trailing 30-day average.
- CP volumes fell marginally by 1% (-42) overnight, driven by a decline in traffic across all corridors other than Vancouver. CP system wide loads on wheels now at 4,975 and 13% above the trailing 30-day average.
- Vancouver presently at 6,329, rose for the fifth consecutive day, up 2% (+96) overnight, now 20% above the trailing 30-day average.
- The Prince Rupert pipeline currently at 2,100, the highest seen in the last 30 days, gained 9% (+182) overnight, and 20% above the trailing 30-day average.
- Thunder Bay volumes decreased 6% (-114) overnight - now at 1,925 and 2% below the trailing 30-day average, with 65% of traffic moving on CP.

**Hopper Car Rationing**

- No hopper cars were rationed by either CN or CP in week 11.

**Loads Not Moving**

- **The count of cars not moving for 48+ hours gained 17% (+374) overnight and have now increased for the third consecutive day, reflecting higher counts on both CN and CP. Idle car counts currently at 2,598 and 81% above the trailing 30-day average.**
- CN
  - **The count of idle cars for 48+ hours gained for the third consecutive day, up 9% (+142) overnight - currently at 1,729 cars.**
  - The number of cars idle for 4+ days increased for the third consecutive day, up 3% (+21) overnight - presently at 725 cars.
  - The count of cars not moving for 7+ days declined 50% (-170) overnight - currently at 171 cars.
  - Vancouver represents 49% of all idle cars.
  - In total 77% of all idle cars are dwelling at origin locations.
- CP
  - **CP idle car counts for 48+ hours gained 36% (+232) overnight - now at 869 cars.**
  - The number of cars idle for 4+ days increased 153% (+199) overnight - currently at 329 cars, the highest seen in the last 30 days.

- The number of cars idle for 7+ days rose 225% (+9) overnight - presently at 13 cars.
- Vancouver accounts for 72% of all idle cars.
- In total 10% of all idle cars are dwelling at origin locations.

### **Port Performance**

- CN and CP reported a total of 1,290 cars unloaded at the three major ports, 4% above the trailing 30-day average. One day in Week 13 unloads now ahead of last week's pace by 50 unloads, marking higher unloads at Thunder Bay and Vancouver offset by reduced unloads at Prince Rupert.
- Vancouver
  - 656 unloads reported by CN and CP at the Port of Vancouver; CN - 190 and CP - 466. One day in Week 13 unloads are tracking ahead of last week's performance by nearly 50 unloads.
  - There are more than 1,650 cars on site at Vancouver with 1,100 cars arriving at the port in the last 24 hours.
  - CN and CP have 1,200 cars in British Columbia en route to Vancouver, with nearly 700 cars at Kamloops and west, and 56% of traffic moving on CP.
- Prince Rupert
  - Prince Rupert reported 197 unloads, now behind last week's unloads after one day by 100 unloads.
  - Loads on wheels remain above 1,000 cars - presently at 2,100 cars.
  - There are 650 cars west of Jasper en route to Prince Rupert.
  - There are 300 cars on site at Prince Rupert with 450 cars arriving at the port in the last 24 hours.
- Thunder Bay
  - 437 unloads were reported at Thunder Bay yesterday. One day in Week 13 unloads are tracking ahead of last week's pace by more than 100 unloads.
  - There are more than 550 cars on site at Thunder Bay with less than 150 cars arriving at the port in the prior 24 hours.
  - There are more than 550 cars en route to Thunder Bay from Winnipeg and east.

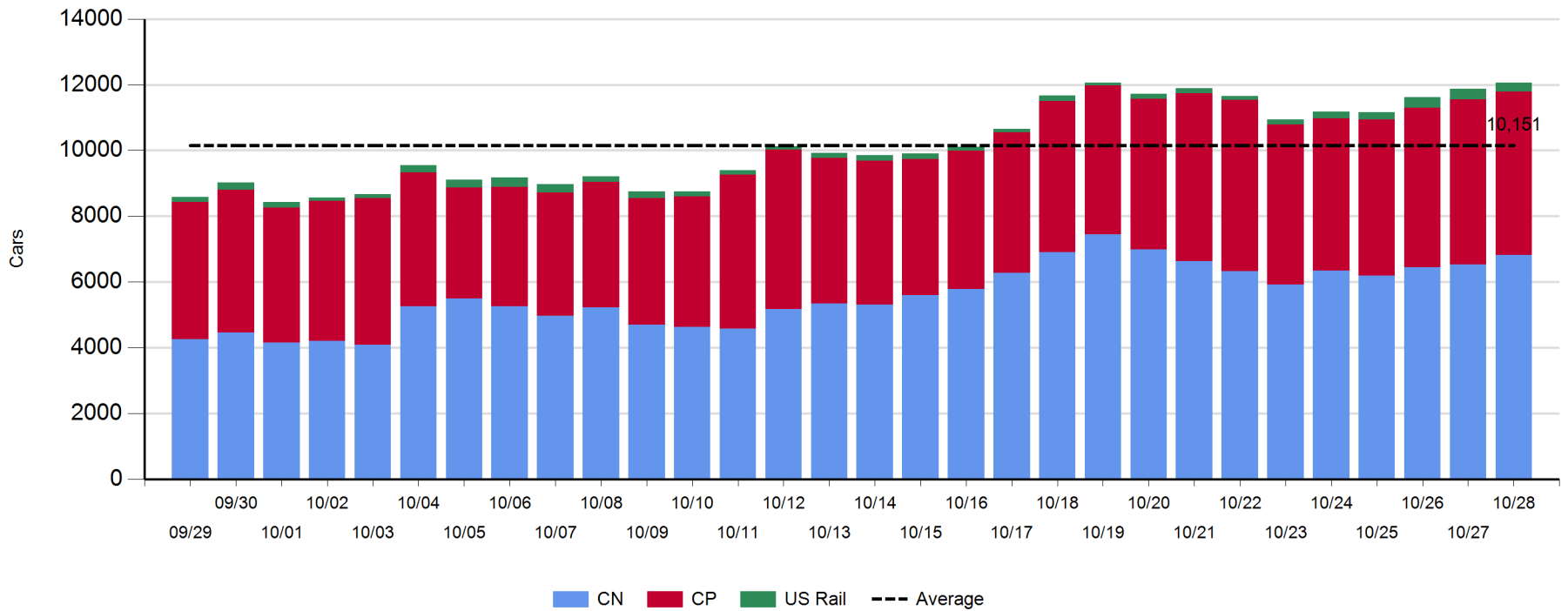
**Daily Loads on Wheels - 10/28/2019**

	E Canada	Prince Rupert	Thunder Bay	USA/MEX	Vancouver	Total
CN	831	2,100	671	337	2,869	6,808
CP	15		1,254	286	3,420	4,975
Short Line					40	40
US Rail				231		231
	846	2,100	1,925	854	6,329	12,054

**Change in Loads on Wheels - Prior 24 Hours**

	E Canada	Prince Rupert	Thunder Bay	USA/MEX	Vancouver	Total
CN	111	182	-72	17	39	277
CP	-24		-42	-48	72	-42
Short Line					-15	-28
US Rail				-25		-25
	74	182	-114	-56	96	182

**Loads on Wheels - Prior 30 Days**

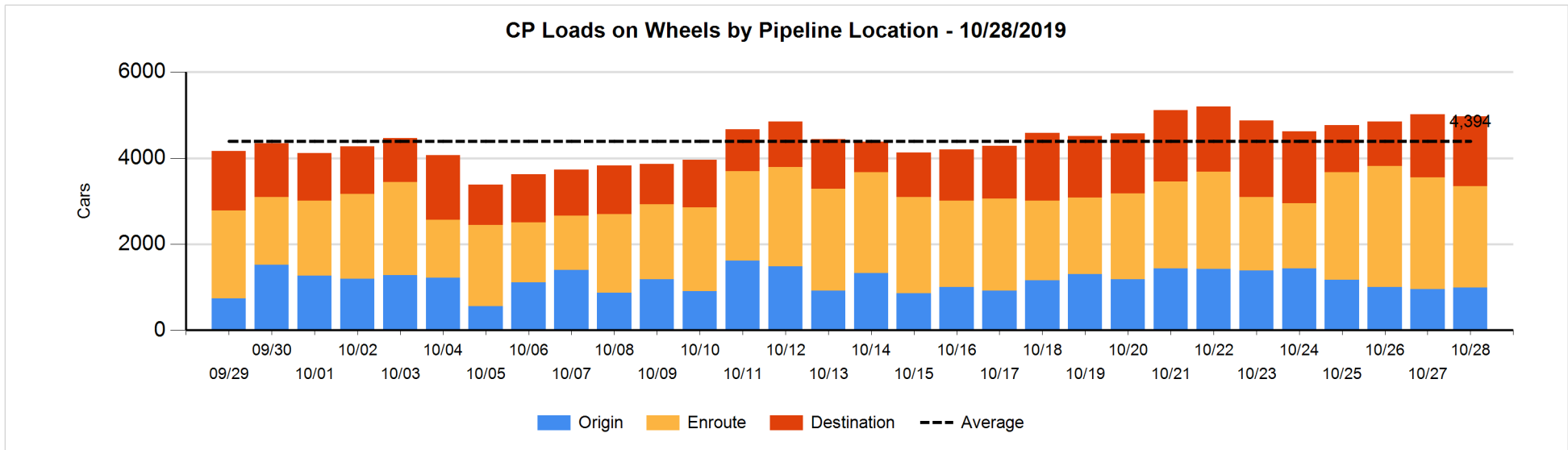
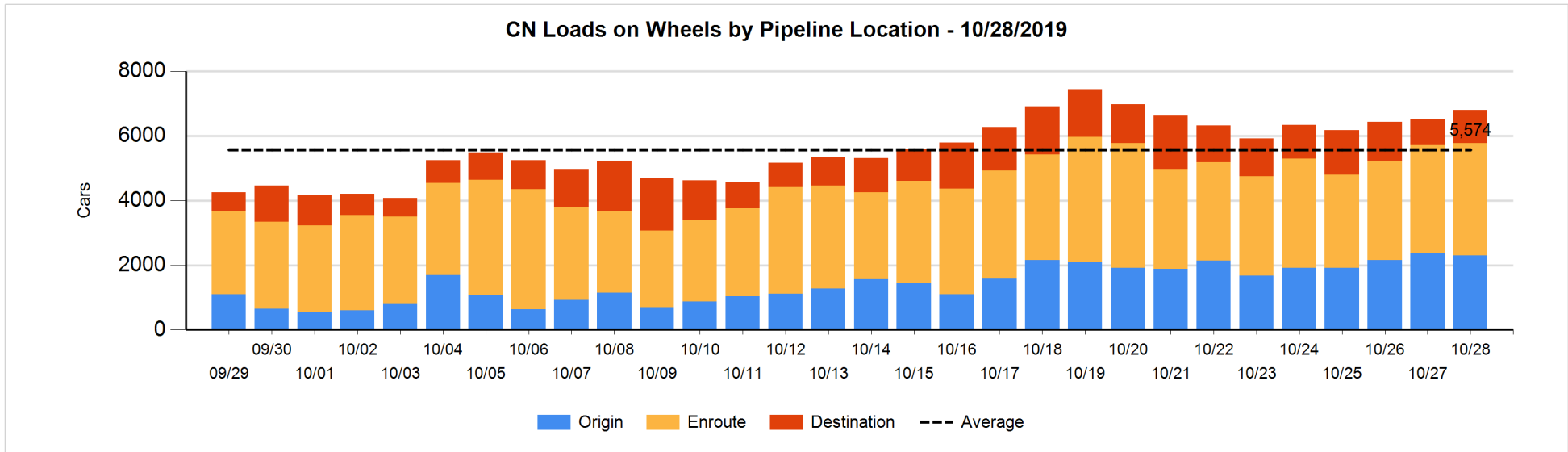


**Daily Loads on Wheels By Pipeline Location - 10/28/2019**

	E Canada	Prince Rupert	Thunder Bay	USA/MEX	Vancouver	Total
CN						
Origin	184	867	99	135	1,019	2,304
Enroute	624	933	447	150	1,322	3,476
Destination	23	300	125	52	528	1,028
	831	2,100	671	337	2,869	6,808
CP						
Origin	1		336	20	638	995
Enroute	14		482	172	1,685	2,353
Destination			436	94	1,097	1,627
	15		1,254	286	3,420	4,975
US Rail / Short Line						
Origin						
Enroute				160		160
Destination				71	40	111
				231	40	271

**Change in Daily Loads on Wheels By Pipeline Location - Prior 24 Hours**

	E Canada	Prince Rupert	Thunder Bay	USA/MEX	Vancouver	Total
CN						
Origin	-13	236	-93	30	-217	-57
Enroute	127	-311	142	-6	165	117
Destination	-3	257	-121	-7	91	217
	111	182	-72	17	39	277
CP						
Origin	0		-27	-97	161	37
Enroute	-24		164	57	-436	-239
Destination			-179	-8	347	160
	-24		-42	-48	72	-42
US Rail / Short Line						
Origin						
Enroute				20		20
Destination	-13			-45	-15	-73
	-13			-25	-15	-53

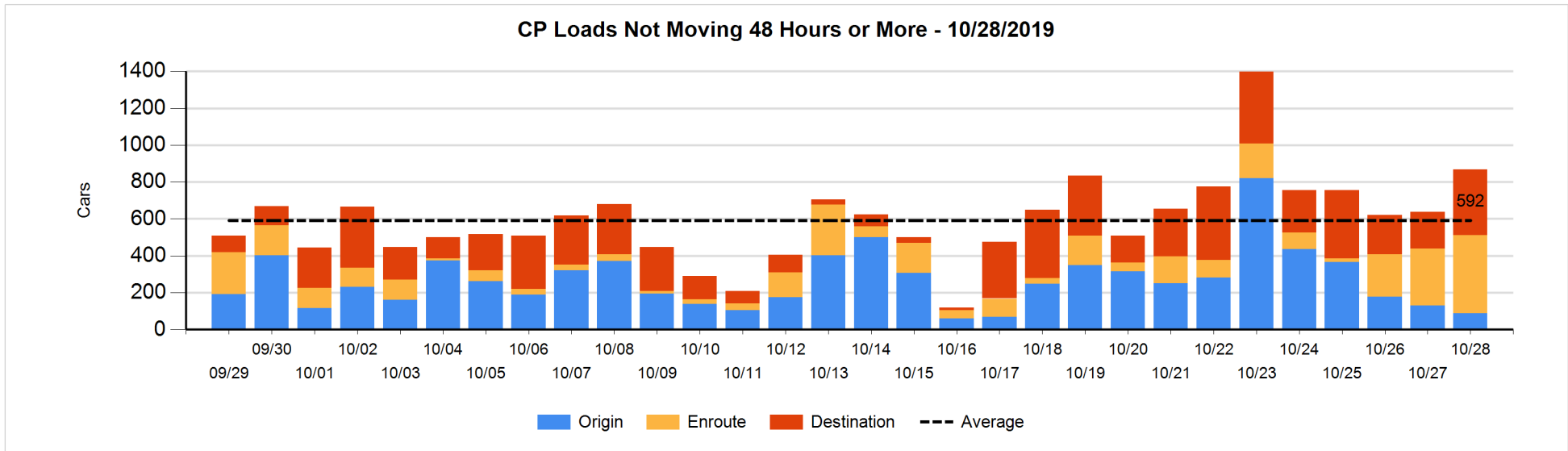
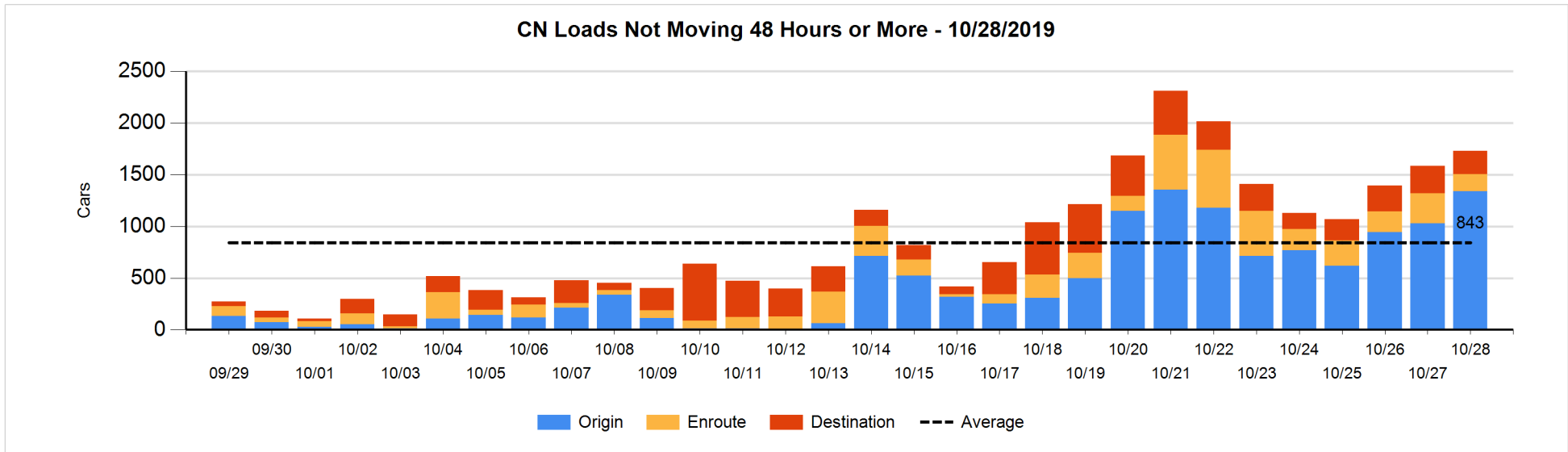


**Loads Not Moving 48 Hours or More - 10/28/2019**

	E Canada	Prince Rupert	Thunder Bay	USA/MEX	Vancouver	Total
<b>CN</b>						
Origin		515		104	718	1337
Enroute	37	111	1	10	10	169
Destination	7	1	73	31	111	223
	44	627	74	145	839	1729
<b>CP</b>						
Origin	1			17	69	87
Enroute	1		1		422	424
Destination			174	47	137	358
	2		175	64	628	869
<b>US Rail / Short Line</b>						
Origin						
Enroute				11		11
Destination				38	10	48
				49	10	59

**Change in Loads Not Moving 48 Hours or More - 10/28/2019**

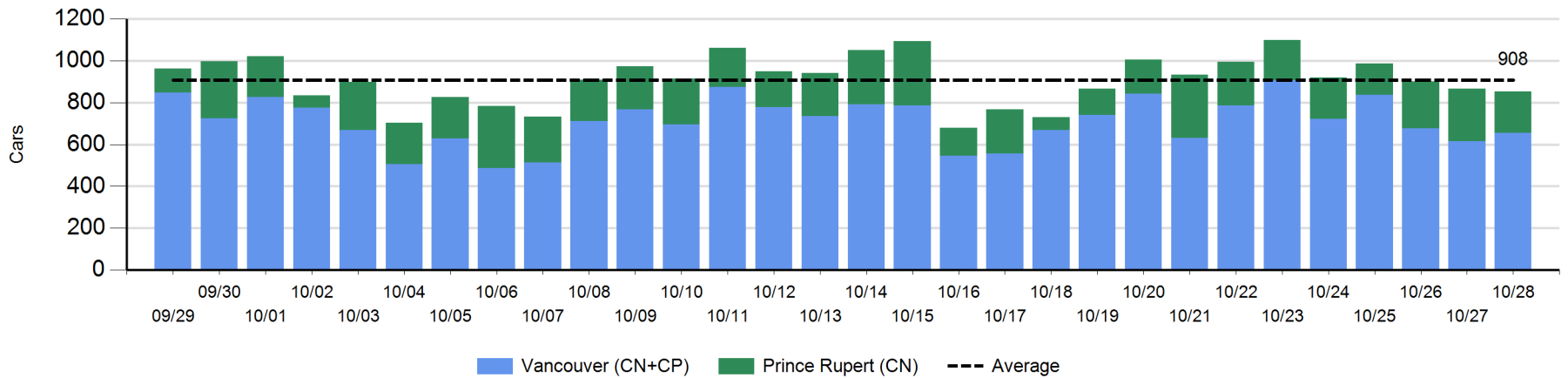
	E Canada	Prince Rupert	Thunder Bay	USA/MEX	Vancouver	Total
<b>CN</b>						
Origin		206		102	-1	307
Enroute	-6	107	-4	-9	-207	-119
Destination	-2	0	16	-27	-33	-46
	-8	313	12	66	-241	142
<b>CP</b>						
Origin	0			-100	58	-42
Enroute	1		-1	-5	119	114
Destination			145	5	10	160
	1		144	-100	187	232
<b>US Rail / Short Line</b>						
Origin						
Enroute				-1		-1
Destination				-3	-12	-15
				-4	-12	-16



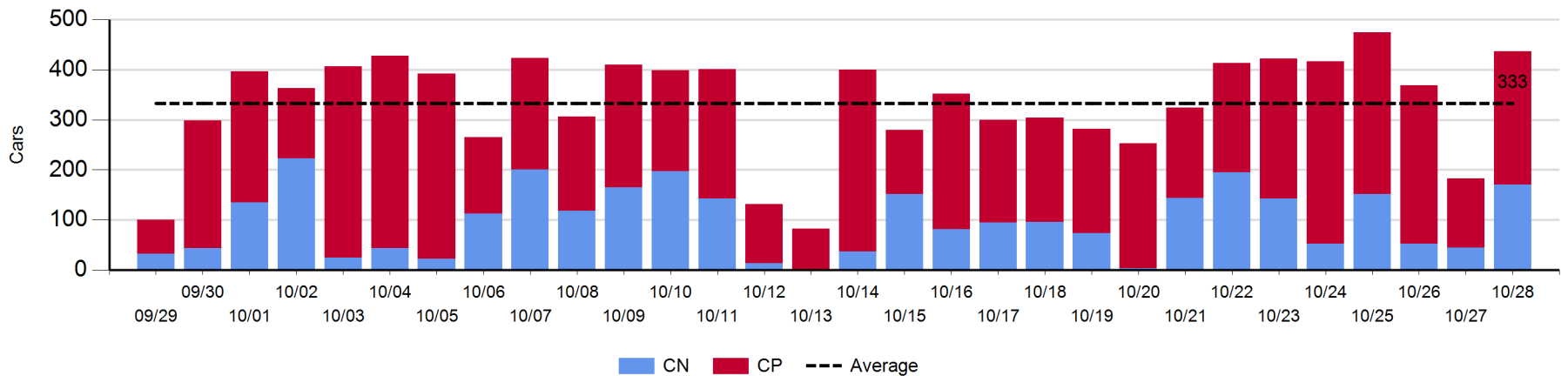
**Port Unloads - 10/28/2019**

	Prince Rupert	Vancouver	West Coast Total	Thunder Bay	Total
CN	197	190	387	171	558
CP		466	466	266	732
	197	656	853	437	1,290

**West Coast Port Unloads - Prior 30 Days**



**Thunder Bay Port Unloads - Prior 30 Days**





**Port Terminal Status**

**Vancouver**

Daily Activity for 10/28/2019

	Cars Arrived	Cars Received in Interchange	Cars Delivered in Interchange	Cars Placed for Unloading	Loads on Wheels at Destination As of 10/28/2019
CN	151	108	99	320	528
CP	943	99	114	360	1,097
SRY	1	6		12	40

**Port Unloads**

	10/28	10/27	Week To Date	Last Week
CN	190	328	190	2,381
CP	466	288	466	2,793
SRY	16		16	61

**Age Profile of Loaded Cars Waiting Placement for Unloading**

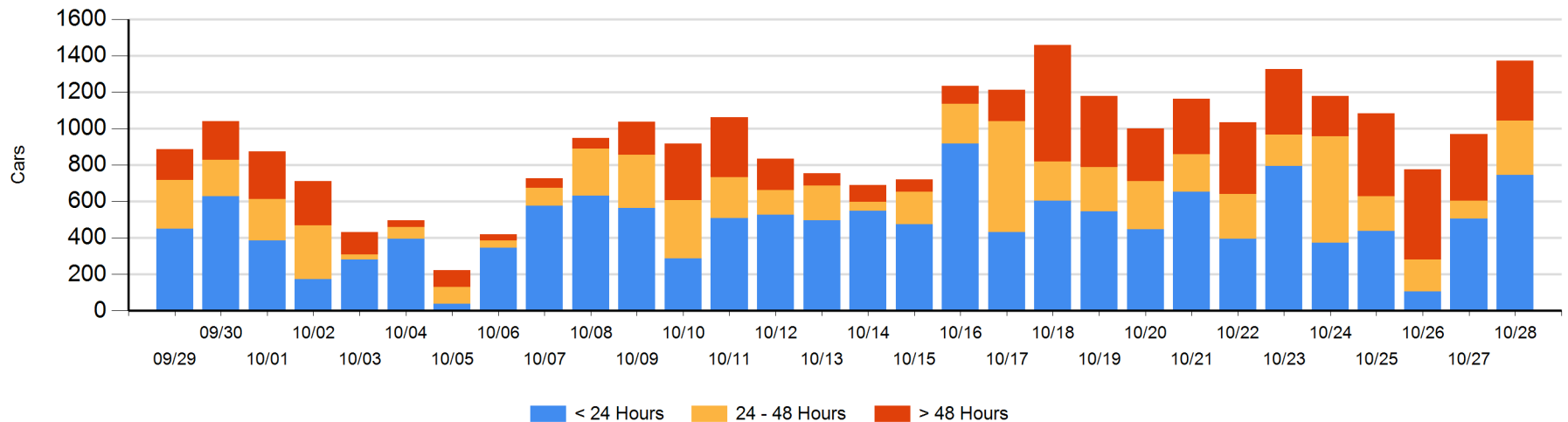
**Today**

	< 24 Hrs	24 - 48 Hrs	> 48-72 Hrs	> 72 Hrs	Total On Hand
CN	106	113	15	134	368
CP	638	188	29	148	1,003
SRY				1	1

**Change in Last 24 Hours**

	< 24 Hrs	24-48 Hrs	48 - 72 Hrs	> 72 Hrs
CN	-110	42	-30	9
CP	349	159	10	-27
SRY				0

**Loaded Cars on Hand Vancouver Waiting for Placement - Last 30 Days All Railways**



**Port Terminal Status**

**Prince Rupert**

Daily Activity for 10/28/2019

	Cars Arrived	Cars Received in Interchange	Cars Delivered in Interchange	Cars Placed for Unloading	Loads on Wheels at Destination As of 10/28/2019
CN	455			477	300

**Port Unloads**

	10/28	10/27	Week To Date	Last Week
CN	197	251	197	1,523

**Age Profile of Loaded Cars Waiting Placement for Unloading**

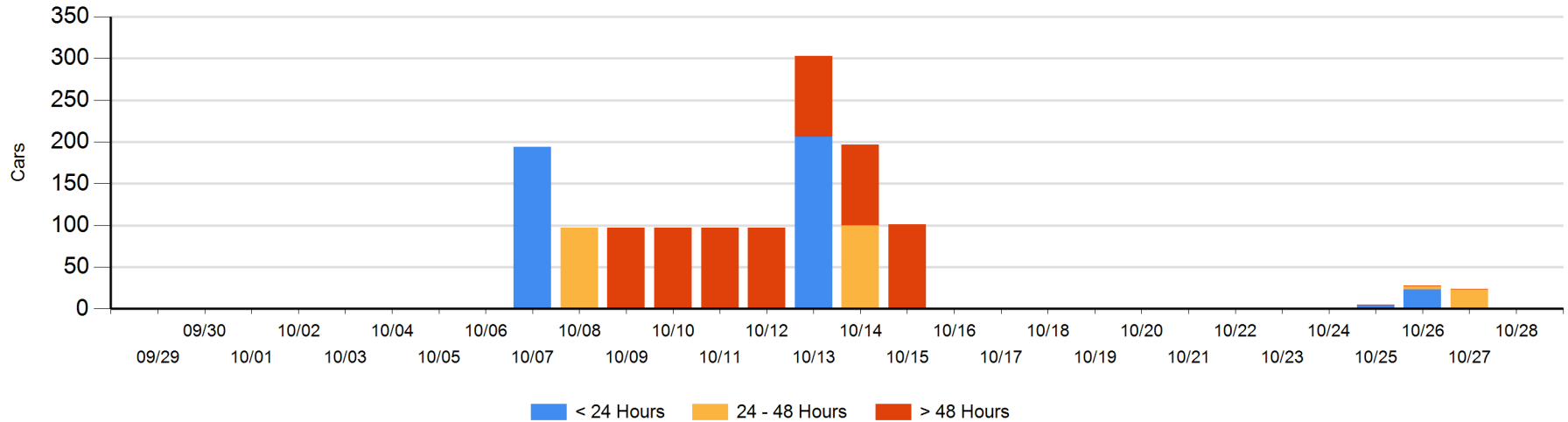
**Today**

	< 24 Hrs	24 - 48 Hrs	> 48-72 Hrs	> 72 Hrs	Total On Hand
CN				1	1

**Change in Last 24 Hours**

	< 24 Hrs	24-48 Hrs	48 - 72 Hrs	> 72 Hrs
CN		-23		0

Loaded Cars on Hand Prince Rupert Waiting for Placement - Last 30 Days All Railways



**Port Terminal Status**

**Thunder Bay**

Daily Activity for 10/28/2019

	Cars Arrived	Cars Received in Interchange	Cars Delivered in Interchange	Cars Placed for Unloading	Loads on Wheels at Destination As of 10/28/2019
CN	50			154	125
CP	87			241	436

**Port Unloads**

	10/28	10/27	Week To Date	Last Week
CN	171	45	171	785
CP	266	138	266	1,817

**Age Profile of Loaded Cars Waiting Placement for Unloading**

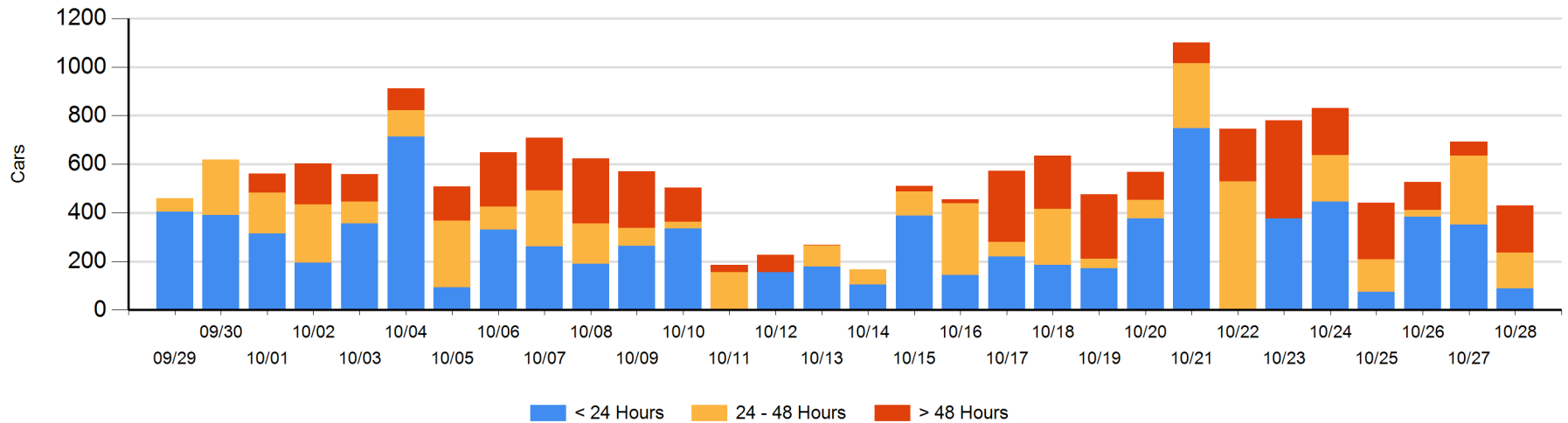
**Today**

	< 24 Hrs	24 - 48 Hrs	> 48-72 Hrs	> 72 Hrs	Total On Hand
CN	1			25	26
CP	87	148	170		405

**Change in Last 24 Hours**

	< 24 Hrs	24-48 Hrs	48 - 72 Hrs	> 72 Hrs
CN	-103			-1
CP	-161	-135	156	-17

**Loaded Cars on Hand Thunder Bay Waiting for Placement - Last 30 Days All Railways**



## Measurement Definitions

Loads on Wheels	<p>Count of loaded rail cars including all rail cars that have been released loaded at origin and have not been reported by the railway as unloaded at destination.</p> <p>Counts include all rail cars (hopper cars and boxcars) moving within a pipeline.</p>
Loads Not Moving	<p>Loaded rail cars for which the railways have not reported a movement event for 48 hours or more whether the rail car is at origin, enroute or at destination.</p>
Port Unloads	<p>Count of rail cars reported by railways as unloaded at the western port destinations of Vancouver, Prince Rupert and Thunder Bay.</p> <p>Unload counts include all rail cars (hopper cars and boxcars) unloaded by all receivers including major port terminals, transloaders and other receivers.</p>
Cars Arrived	<p>Count of rail cars reported as arrived at the destination railway terminal.</p>
Cars Received in Interchange	<p>Count of rail cars received in interchange by each railway within a destination railway terminal. Interchange activity is tracked for the Vancouver and Thunder Bay pipelines as applicable.</p>
Cars Delivered in Interchange	<p>Count of rail cars delivered in interchange by each railway within a destination railway terminal. Interchange activity is tracked for the Vancouver and Thunder Bay pipelines as applicable.</p>
Cars Placed for Unloading	<p>Count of rail cars reported by the railways as placed loaded at the receiver's facility for unloading.</p>
Loads on Wheels at Destination	<p>Count of rail cars that remain under load within the destination railway terminal including rail cars that have been reported as placed for unloading but not yet reported as unloaded.</p>
Waiting Placement for Unloading	<p>Count of rail cars that have been reported as arrived at the destination railway terminal but not reported as placed for unloading by the railway.</p> <p>For the Ports of Vancouver, Prince Rupert and Thunder Bay the count of rail cars waiting placement for unloading is categorized by age – i.e. the elapsed time from arrival at destination to the current report date.</p>