

SPEED READ

- Loads on wheels fell slightly overnight, marking a decline in CN traffic offset by higher CP volumes. On a net basis, volumes decreased due to lower traffic in the Prince Rupert, E. Canada and USA/MEX corridors offset by higher volumes in the Vancouver and Thunder Bay corridors.
- Network fluidity improved overnight, led by a decline in idle car counts on both CN and CP by 29% (-493) and 15% (-132), respectively. The total count of cars for 4+ days on both railways declined 9% (-91) overnight - presently at 963 cars.
- Two days in Week 13 unloads now behind prior week's performance by nearly 200 unloads, marking lower unloads across all three major ports - Vancouver, Thunder Bay and Prince Rupert.

=====

Loads on Wheels

- Loads on wheels fell slightly by 1% (-89) overnight, due to reduced volumes on CN offset by higher volumes on CP - combined total at 11,969 and 17% above the trailing 30-day average.
- On a net basis, the decline in loads on wheels reflects lower traffic in the Prince Rupert, E. Canada and USA/MEX corridors offset by higher volumes in the Vancouver and Thunder Bay corridors.
- CN volumes fell 4% (-284) overnight, with reduced volumes in the Prince Rupert, E. Canada and USA/MEX corridors offset by higher volumes in the Vancouver and Thunder Bay corridors. System wide CN loads on wheels presently at 6,524 and 15% above the trailing 30-day average.
- CP volumes increased 3% (+166) overnight, driven by a rise in volumes in the Vancouver and Thunder Bay corridors offset by a decline in traffic in the USA/MEX corridor. CP system wide loads on wheels now at 5,145 and 16% above the trailing 30-day average.
- Vancouver presently at 6,501, increased 3% (+168) overnight and have now increased for the sixth consecutive day, now 21% above the trailing 30-day average.
- The Prince Rupert pipeline presently at 1,887, fell 10% (-213) overnight, and 7% above the trailing 30-day average.
- Thunder Bay volumes increased 2% (+30) overnight - presently at 1,955 and in line with the trailing 30-day average, with 66% of traffic moving on CP.

Hopper Car Rationing

- No hopper cars were rationed by either CN or CP in week 11.

Loads Not Moving

- **The count of cars not moving for 48+ hours decreased 24% (-625) overnight, marking lower counts on both CN and CP. Idle car counts presently at 1,973 and 34% above the trailing 30-day average.**
- CN
 - **The count of idle cars for 48+ hours fell 29% (-493) overnight - now at 1,236 cars.**
 - The number of cars idle for 4+ days increased slightly by (+3) overnight and have now increased for the fourth consecutive day - now at 727 cars.
 - The count of cars not moving for 7+ days increased 91% (+156) overnight - presently at 327 cars.
 - Vancouver represents 56% of all idle cars.
 - In total 74% of all idle cars are dwelling at origin locations.
- CP
 - **CP idle car counts for 48+ hours fell 15% (-132) overnight - presently at 737 cars.**
 - The number of cars idle for 4+ days declined 28% (-93) overnight - presently at 236 cars.

- The number of cars idle for 7+ days increased 8% (+1) overnight - presently at 14 cars.
- Vancouver accounts for 58% of all idle cars.
- In total 26% of all idle cars are dwelling at origin locations.

Port Performance

- CN and CP reported a total of 1,176 cars unloaded at the three major ports, 6% below the trailing 30-day average. Two days in Week 13 unloads now behind last week's pace by nearly 200 unloads, marking lower unloads across all three major ports - Vancouver, Thunder Bay and Prince Rupert.
- Vancouver
 - 693 unloads reported by CN and CP at the Port of Vancouver; CN - 344 and CP - 349. Two days in Week 13 unloads are tracking behind last week's performance by 50 unloads.
 - There are around 1,650 cars on site at Vancouver with more than 650 cars arriving at the port in the last 24 hours.
 - CN and CP have more than 1,150 cars in British Columbia en route to Vancouver, with more than 700 cars at Kamloops and west, and 60% of traffic moving on CP.
- Prince Rupert
 - Prince Rupert reported 217 unloads, now behind last week's unloads after two days by 100 unloads.
 - Loads on wheels remain above 1,000 cars - now at 1,887 cars.
 - There are more than 350 cars west of Jasper en route to Prince Rupert.
 - There are 400 cars on site at Prince Rupert with 300 cars arriving at the port in the last 24 hours.
- Thunder Bay
 - 266 unloads were reported at Thunder Bay yesterday. Two days in Week 13 unloads are tracking behind last week's pace by around 50 unloads.
 - There are more than 750 cars on site at Thunder Bay with more than 450 cars arriving at the port in the prior 24 hours.
 - There are more than 450 cars en route to Thunder Bay from Winnipeg and east.

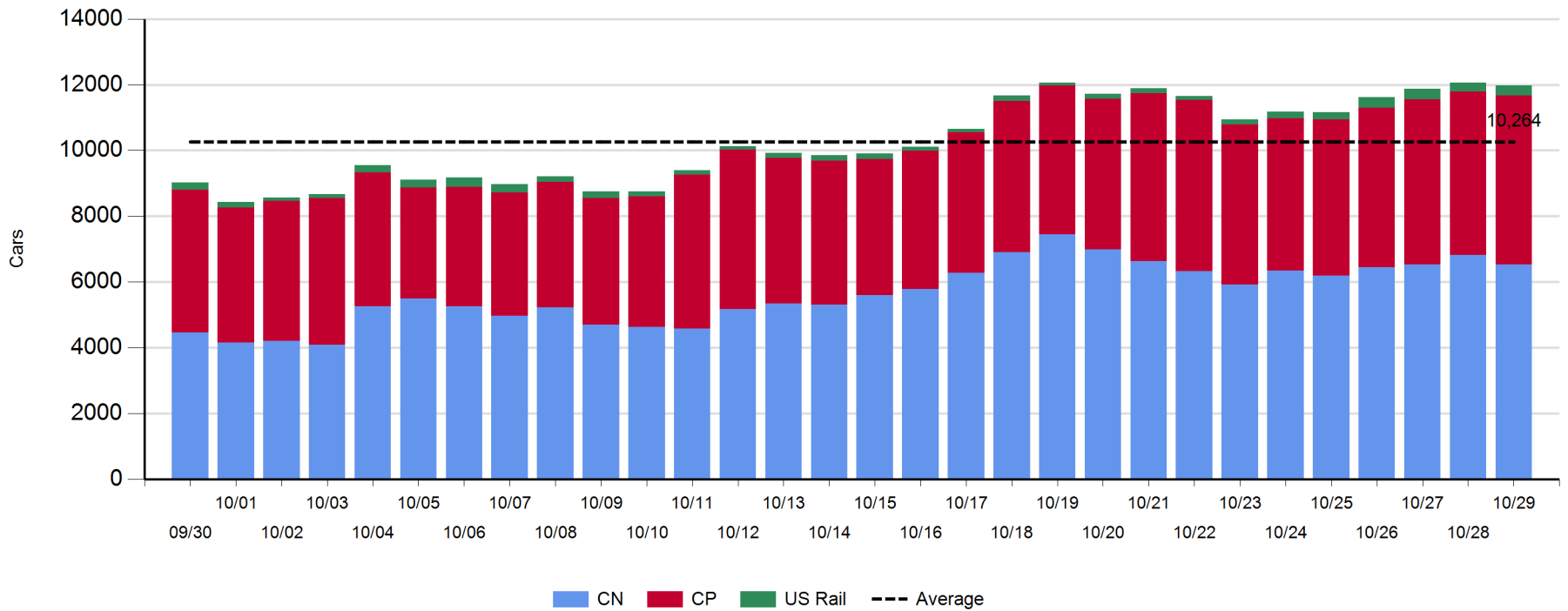
Daily Loads on Wheels - 10/29/2019

	E Canada	Prince Rupert	Thunder Bay	USA/MEX	Vancouver	Total
CN	758	1,887	673	322	2,884	6,524
CP	15		1,282	262	3,586	5,145
Short Line					31	31
US Rail				269		269
	773	1,887	1,955	853	6,501	11,969

Change in Loads on Wheels - Prior 24 Hours

	E Canada	Prince Rupert	Thunder Bay	USA/MEX	Vancouver	Total
CN	-73	-213	2	-15	15	-284
CP	0		28	-24	162	166
Short Line					-9	-9
US Rail				38		38
	-73	-213	30	-1	168	-89

Loads on Wheels - Prior 30 Days

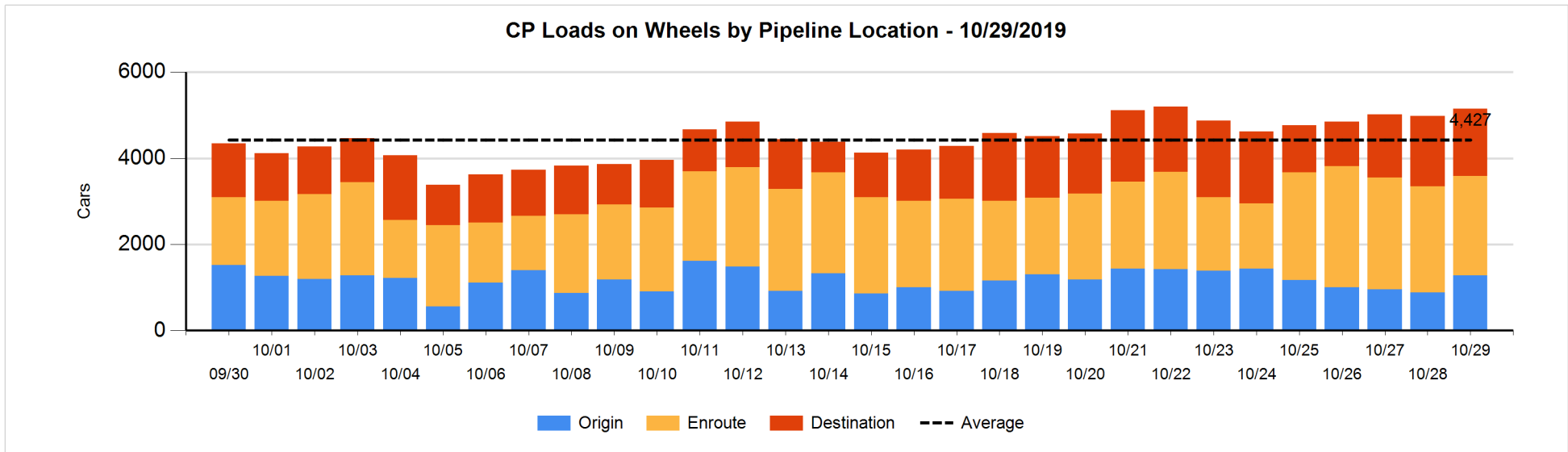
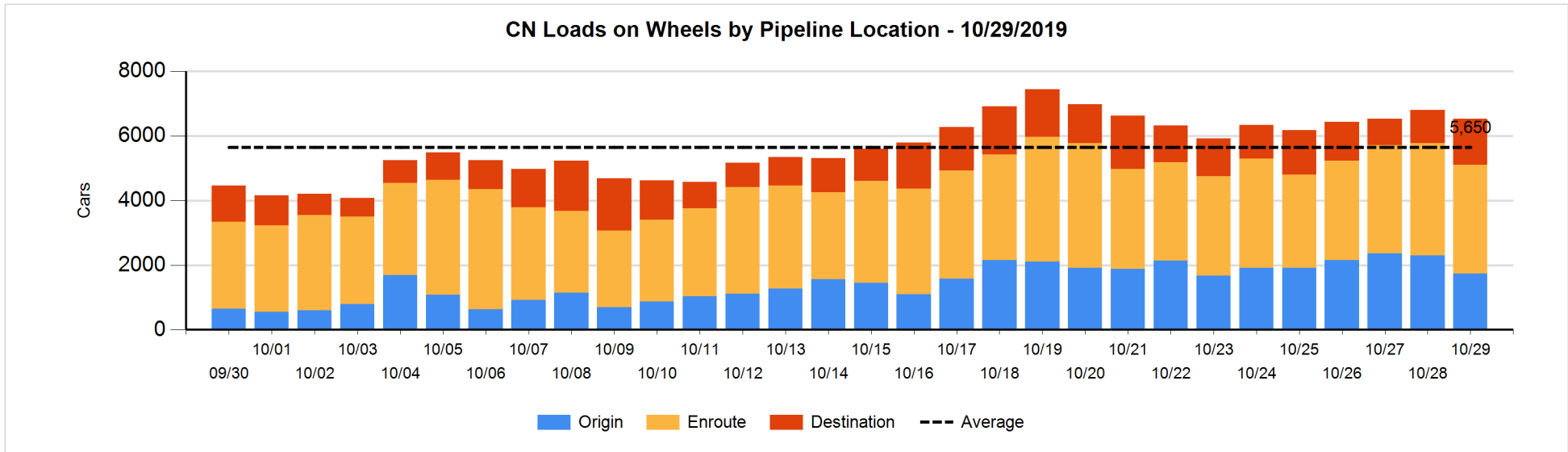


Daily Loads on Wheels By Pipeline Location - 10/29/2019

	E Canada	Prince Rupert	Thunder Bay	USA/MEX	Vancouver	Total
CN						
Origin	13	508	151	28	1,037	1,737
Enroute	659	979	250	246	1,229	3,363
Destination	86	400	272	48	618	1,424
	758	1,887	673	322	2,884	6,524
CP						
Origin	1		356	118	799	1,274
Enroute	13		428	74	1,800	2,315
Destination	1		498	70	987	1,556
	15		1,282	262	3,586	5,145
US Rail / Short Line						
Origin						
Enroute				215		215
Destination				54	31	85
				269	31	300

Change in Daily Loads on Wheels By Pipeline Location - Prior 24 Hours

	E Canada	Prince Rupert	Thunder Bay	USA/MEX	Vancouver	Total
CN						
Origin	-171	-359	52	-107	18	-567
Enroute	35	46	-197	96	-93	-113
Destination	63	100	147	-4	90	396
	-73	-213	2	-15	15	-284
CP						
Origin	0		20	98	268	386
Enroute	-1		-54	-98	4	-149
Destination	1		62	-24	-110	-71
	0		28	-24	162	166
US Rail / Short Line						
Origin						
Enroute				55		55
Destination				-17	-9	-26
				38	-9	29

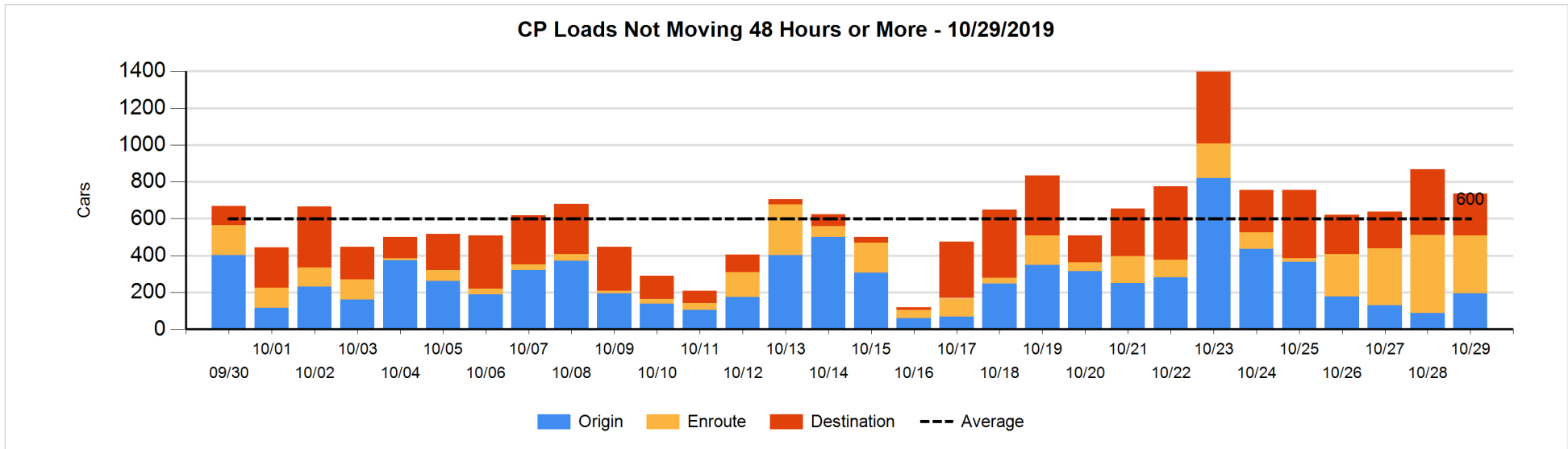
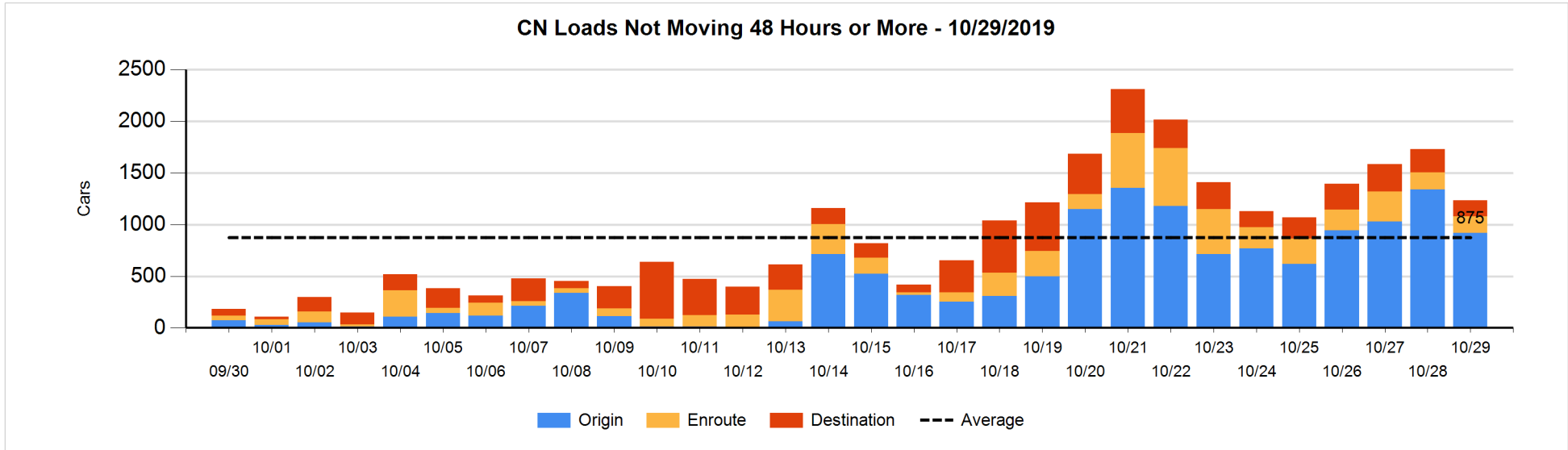


Loads Not Moving 48 Hours or More - 10/29/2019

	E Canada	Prince Rupert	Thunder Bay	USA/MEX	Vancouver	Total
CN						
Origin		305			614	919
Enroute	30	116	1	3	11	161
Destination	6	1	69	17	63	156
	36	422	70	20	688	1236
CP						
Origin	1		112	17	65	195
Enroute	1		1		313	315
Destination			116	65	46	227
	2		229	82	424	737
US Rail / Short Line						
Origin						
Enroute				8		8
Destination				36	23	59
				44	23	67

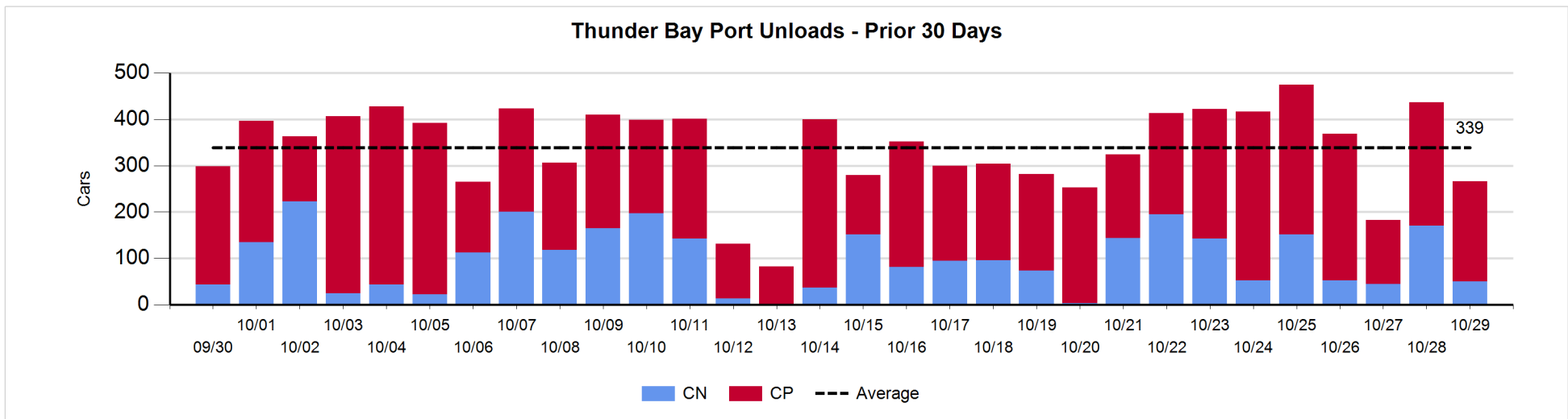
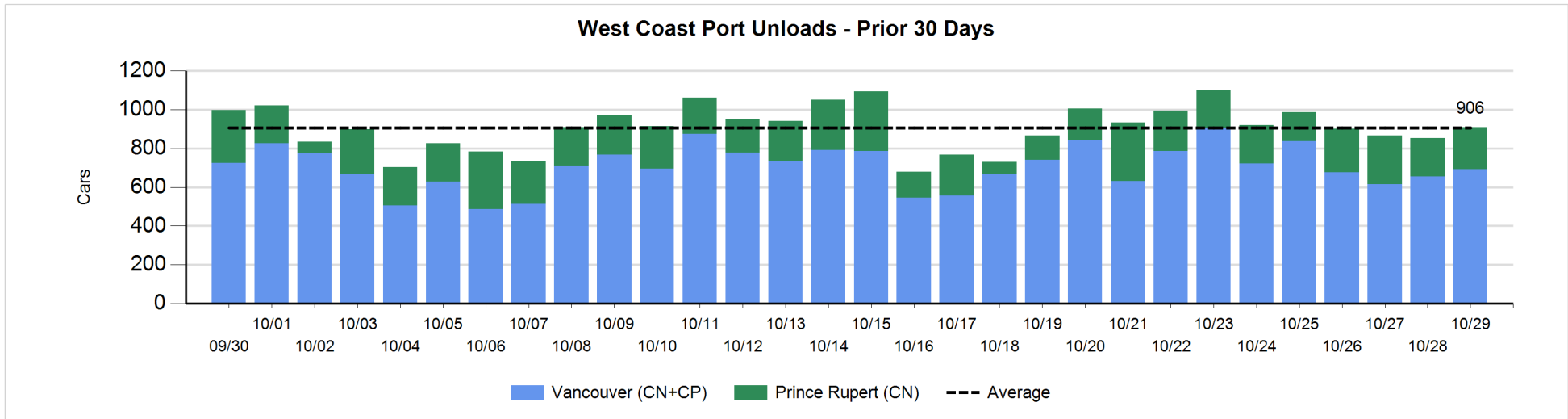
Change in Loads Not Moving 48 Hours or More - 10/29/2019

	E Canada	Prince Rupert	Thunder Bay	USA/MEX	Vancouver	Total
CN						
Origin		-210		-104	-104	-418
Enroute	-7	5	0	-7	1	-8
Destination	-1	0	-4	-14	-48	-67
	-8	-205	-4	-125	-151	-493
CP						
Origin	0		112	0	-4	108
Enroute	0		0		-109	-109
Destination			-58	18	-91	-131
	0		54	18	-204	-132
US Rail / Short Line						
Origin						
Enroute				-3		-3
Destination				-2	13	11
				-5	13	8



Port Unloads - 10/29/2019

	Prince Rupert	Vancouver	West Coast Total	Thunder Bay	Total
CN	217	344	561	50	611
CP		349	349	216	565
	217	693	910	266	1,176



Port Terminal Status

Vancouver

Daily Activity for 10/29/2019

	Cars Arrived	Cars Received in Interchange	Cars Delivered in Interchange	Cars Placed for Unloading	Loads on Wheels at Destination As of 10/29/2019
CN	214	219	205	338	618
CP	465	205	219	500	987
SRY				10	31

Port Unloads

	10/29	10/28	Week To Date	Last Week
CN	344	190	534	2,381
CP	349	466	815	2,793
SRY	9	16	25	61

Age Profile of Loaded Cars Waiting Placement for Unloading

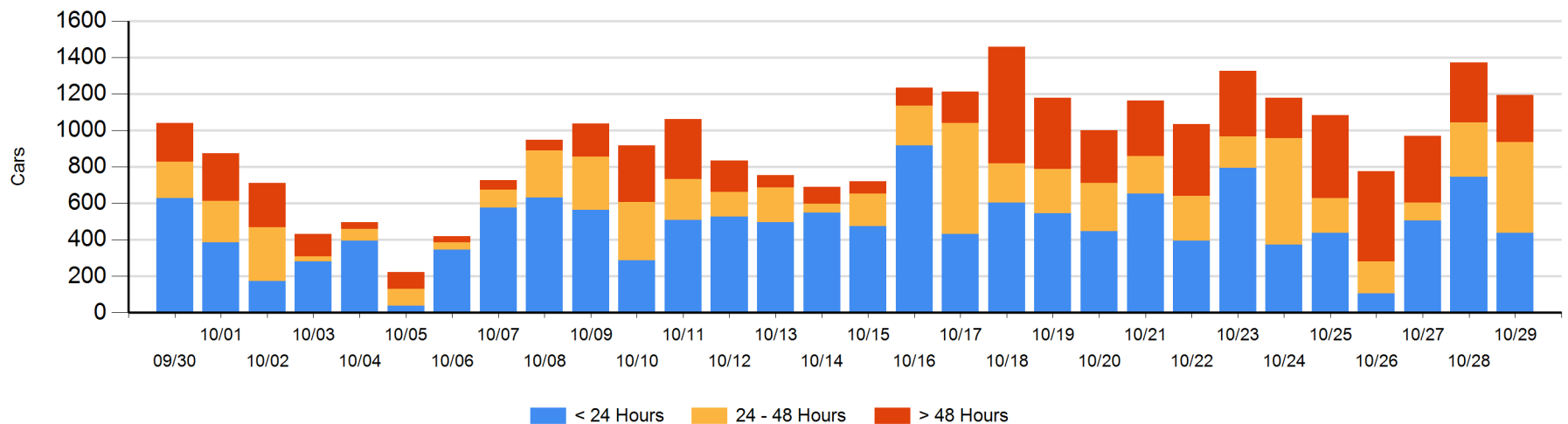
Today

	< 24 Hrs	24 - 48 Hrs	> 48-72 Hrs	> 72 Hrs	Total On Hand
CN	104	99	110	58	371
CP	334	398	42	49	823
SRY				1	1

Change in Last 24 Hours

	< 24 Hrs	24-48 Hrs	48 - 72 Hrs	> 72 Hrs
CN	-2	-14	95	-76
CP	-304	210	13	-99
SRY				0

Loaded Cars on Hand Vancouver Waiting for Placement - Last 30 Days All Railways



Port Terminal Status

Prince Rupert

Daily Activity for 10/29/2019

	Cars Arrived	Cars Received in Interchange	Cars Delivered in Interchange	Cars Placed for Unloading	Loads on Wheels at Destination As of 10/29/2019
CN	300			299	400

Port Unloads

	10/29	10/28	Week To Date	Last Week
CN	217	197	414	1,523

Age Profile of Loaded Cars Waiting Placement for Unloading

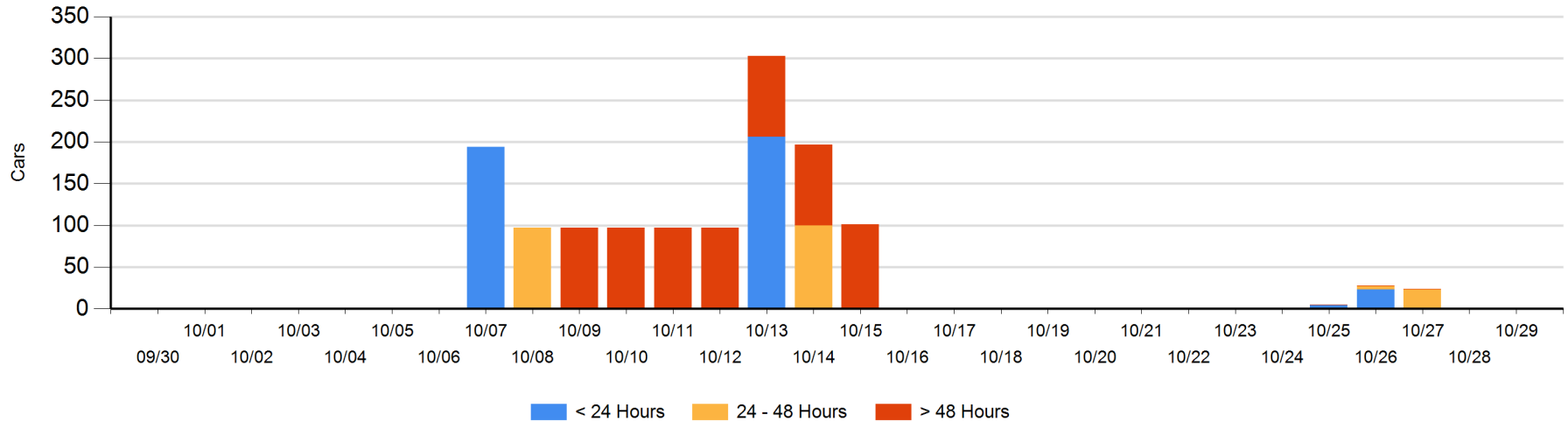
Today

	< 24 Hrs	24 - 48 Hrs	> 48-72 Hrs	> 72 Hrs	Total On Hand
CN	1				1

Change in Last 24 Hours

	< 24 Hrs	24-48 Hrs	48 - 72 Hrs	> 72 Hrs
CN	1			-1

Loaded Cars on Hand Prince Rupert Waiting for Placement - Last 30 Days All Railways



Port Terminal Status

Thunder Bay

Daily Activity for 10/29/2019

	Cars Arrived	Cars Received in Interchange	Cars Delivered in Interchange	Cars Placed for Unloading	Loads on Wheels at Destination As of 10/29/2019
CN	197				272
CP	278			298	498

Port Unloads

	10/29	10/28	Week To Date	Last Week
CN	50	171	221	785
CP	216	266	482	1,817

Age Profile of Loaded Cars Waiting Placement for Unloading

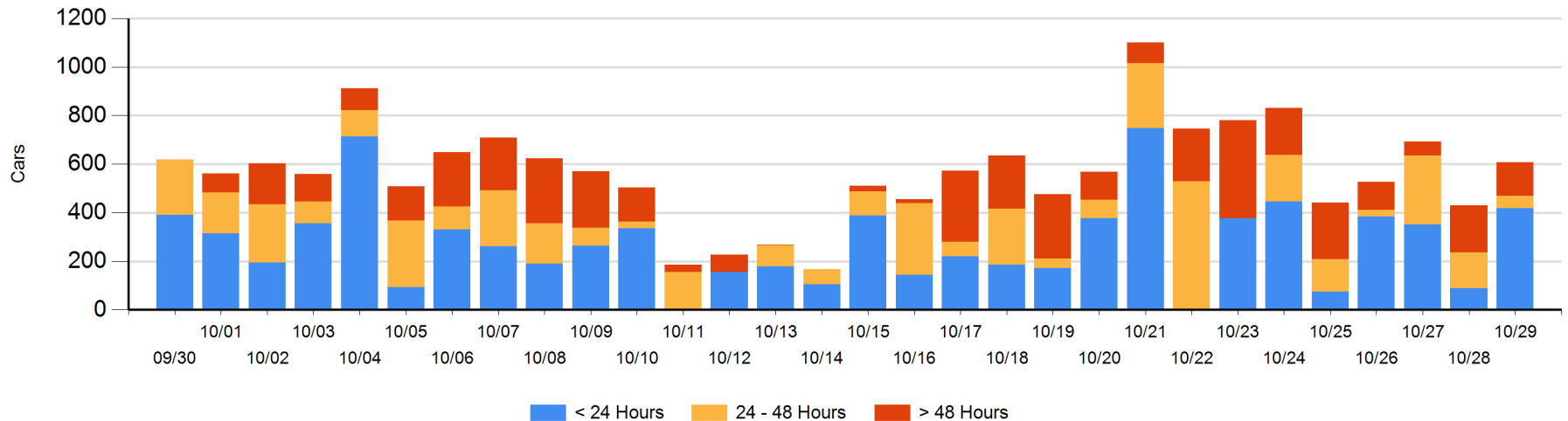
Today

	< 24 Hrs	24 - 48 Hrs	> 48-72 Hrs	> 72 Hrs	Total On Hand
CN	197	1		25	223
CP	222	48	59	56	385

Change in Last 24 Hours

	< 24 Hrs	24-48 Hrs	48 - 72 Hrs	> 72 Hrs
CN	196	1		0
CP	135	-100	-111	56

Loaded Cars on Hand Thunder Bay Waiting for Placement - Last 30 Days All Railways



Measurement Definitions

Loads on Wheels	<p>Count of loaded rail cars including all rail cars that have been released loaded at origin and have not been reported by the railway as unloaded at destination.</p> <p>Counts include all rail cars (hopper cars and boxcars) moving within a pipeline.</p>
Loads Not Moving	<p>Loaded rail cars for which the railways have not reported a movement event for 48 hours or more whether the rail car is at origin, enroute or at destination.</p>
Port Unloads	<p>Count of rail cars reported by railways as unloaded at the western port destinations of Vancouver, Prince Rupert and Thunder Bay.</p> <p>Unload counts include all rail cars (hopper cars and boxcars) unloaded by all receivers including major port terminals, transloaders and other receivers.</p>
Cars Arrived	<p>Count of rail cars reported as arrived at the destination railway terminal.</p>
Cars Received in Interchange	<p>Count of rail cars received in interchange by each railway within a destination railway terminal. Interchange activity is tracked for the Vancouver and Thunder Bay pipelines as applicable.</p>
Cars Delivered in Interchange	<p>Count of rail cars delivered in interchange by each railway within a destination railway terminal. Interchange activity is tracked for the Vancouver and Thunder Bay pipelines as applicable.</p>
Cars Placed for Unloading	<p>Count of rail cars reported by the railways as placed loaded at the receiver's facility for unloading.</p>
Loads on Wheels at Destination	<p>Count of rail cars that remain under load within the destination railway terminal including rail cars that have been reported as placed for unloading but not yet reported as unloaded.</p>
Waiting Placement for Unloading	<p>Count of rail cars that have been reported as arrived at the destination railway terminal but not reported as placed for unloading by the railway.</p> <p>For the Ports of Vancouver, Prince Rupert and Thunder Bay the count of rail cars waiting placement for unloading is categorized by age – i.e. the elapsed time from arrival at destination to the current report date.</p>