

**SPEED READ**

- Loads on wheels increased overnight, reflecting an increase in both CN and CP volumes. On a net basis, volumes increased due to higher traffic in the Thunder Bay, Prince Rupert and Vancouver corridors offset by lower volumes in the E. Canada and USA/MEX corridors.
- Network fluidity deteriorated overnight, led by a rise in idle car counts on CP by 68% (+361) offset by a decline in idle car counts on CN by 22% (-342). The total count of cars for 4+ days on both railways declined 35% (-347) overnight - currently at 642 cars.
- Four days in Week 13 unloads now behind prior week's performance by more than 200 unloads, reflecting lower unloads at Prince Rupert and Thunder Bay offset by improved week over week performance at Vancouver.

=====

**Loads on Wheels**

- Loads on wheels increased 6% (+646) overnight, due to higher traffic on both CN and CP - combined total at 12,232, the highest seen in the last 30 days, and 17% above the trailing 30-day average.
- On a net basis, the rise in loads on wheels indicates higher traffic in the Thunder Bay, Prince Rupert and Vancouver corridors offset by lower volumes in the E. Canada and USA/MEX corridors.
- CN volumes rose slightly by 1% (+57) overnight, with higher traffic in the Thunder Bay and Prince Rupert corridors offset by lower traffic in all other corridors. System wide CN loads on wheels currently at 6,501 and 12% above the trailing 30-day average.
- CP volumes increased 12% (+573) overnight, driven by a rise in traffic across all corridors other than USA/MEX. CP system wide loads on wheels now at 5,426, the highest seen in the last 30 days, and 21% above the trailing 30-day average.
- Vancouver presently at 6,086, increased 2% (+95) overnight, now 11% above the trailing 30-day average.
- The Prince Rupert pipeline currently at 2,149, the highest seen in the last 30 days, increased 11% (+218) overnight, and 20% above the trailing 30-day average.
- Thunder Bay volumes increased significantly by 29% (+582) overnight and have now increased for the third consecutive day - now at 2,616, the highest seen in the last 30 days, and 32% above the trailing 30-day average, with 62% of traffic moving on CP.

**Hopper Car Rationing**

- No hopper cars were rationed by either CN or CP in week 12.

**Loads Not Moving**

- **The count of cars not moving for 48+ hours increased marginally by 1% (+19) overnight, reflecting higher counts on CP offset by lower counts on CN. Idle car counts currently at 2,101 and 34% above the trailing 30-day average.**
- CN
  - **The count of idle cars for 48+ hours declined 22% (-342) overnight - currently at 1,212 cars.**
  - The number of cars idle for 4+ days declined 52% (-437) overnight - now at 408 cars.
  - The count of cars not moving for 7+ days declined 80% (-101) overnight - presently at 26 cars.
  - Vancouver represents 36% of all idle cars.
  - In total 64% of all idle cars are dwelling at origin locations.
- CP
  - **CP idle car counts for 48+ hours rose 68% (+361) overnight - presently at 889 cars.**

- The number of cars idle for 4+ days increased 63% (+90) overnight - currently at 234 cars.
- The number of cars idle for 7+ days increased (+56) overnight - currently at 67 cars.
- Vancouver accounts for 69% of all idle cars.
- In total 64% of all idle cars are dwelling at origin locations.

### **Port Performance**

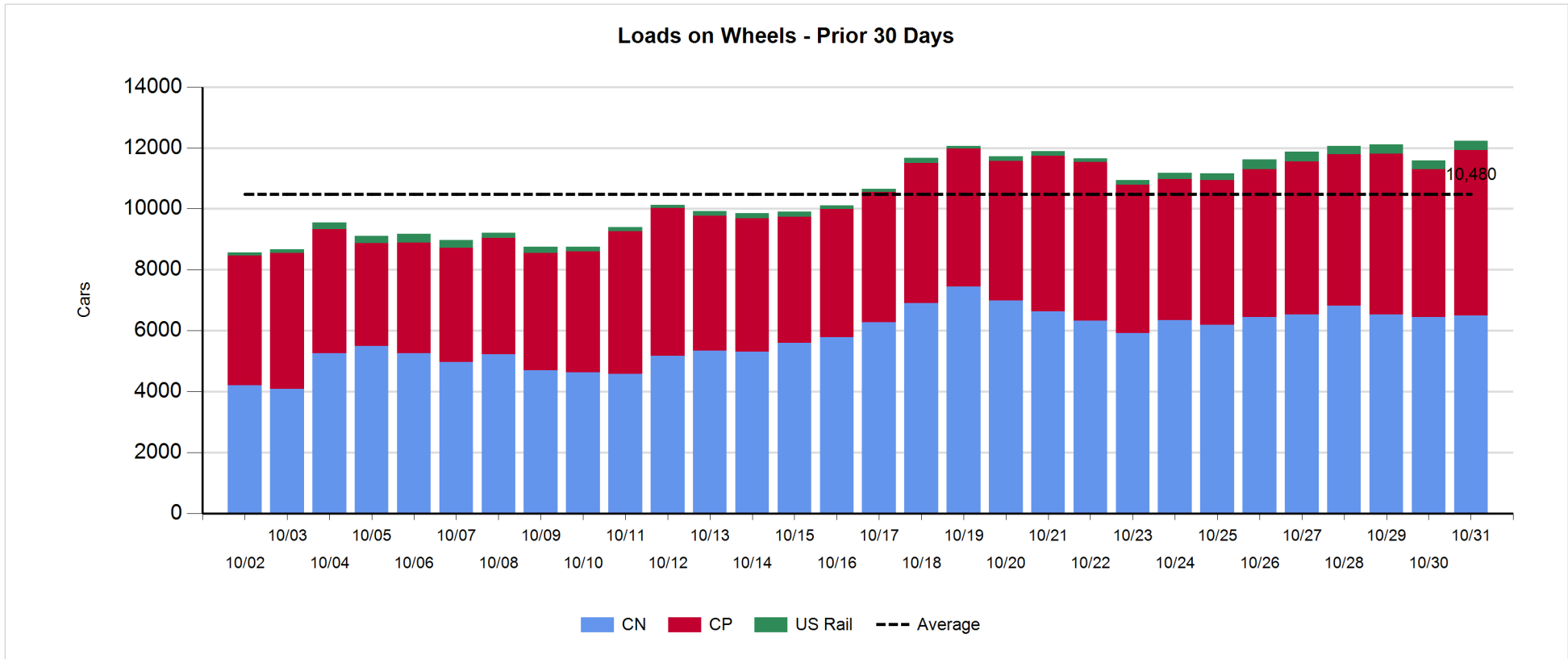
- CN and CP reported a total of 1,244 cars unloaded at the three major ports, in line with the trailing 30-day average. Four days in Week 13 unloads now behind last week's pace by more than 200 unloads, reflecting lower unloads at Prince Rupert and Thunder Bay offset by higher unloads at Vancouver.
- Vancouver
  - 812 unloads reported by CN and CP at the Port of Vancouver; CN - 330 and CP - 482. Four days in Week 13 unloads are tracking ahead of last week's performance by 150 unloads.
  - There are more than 1,550 cars on site at Vancouver with 700 cars arriving at the port in the last 24 hours.
  - CN and CP have 1,300 cars in British Columbia en route to Vancouver, with more than 850 cars at Kamloops and west, and 51% of traffic moving on CN.
- Prince Rupert
  - Prince Rupert reported 143 unloads, now behind last week's unloads after four days by nearly 200 unloads.
  - Loads on wheels remain above 1,000 cars - presently at 2,149 cars.
  - There are 600 cars west of Jasper en route to Prince Rupert.
  - There are nearly 400 cars on site at Prince Rupert with more than 100 cars arriving at the port in the last 24 hours.
- Thunder Bay
  - 289 unloads were reported at Thunder Bay yesterday. Four days in Week 13 unloads are tracking behind last week's pace by about 200 unloads.
  - There are more than 600 cars on site at Thunder Bay with 200 cars arriving at the port in the prior 24 hours.
  - There are 500 cars en route to Thunder Bay from Winnipeg and east.

**Daily Loads on Wheels - 10/31/2019**

	E Canada	Prince Rupert	Thunder Bay	USA/MEX	Vancouver	Total
CN	602	2,149	996	329	2,425	6,501
CP	35		1,620	136	3,635	5,426
Short Line	8				26	34
US Rail				271		271
	645	2,149	2,616	736	6,086	12,232

**Change in Loads on Wheels - Prior 24 Hours**

	E Canada	Prince Rupert	Thunder Bay	USA/MEX	Vancouver	Total
CN	-196		218		270	57
CP	28				312	573
Short Line	0					-8
US Rail				24		24
	-168	218	582	-81	95	646

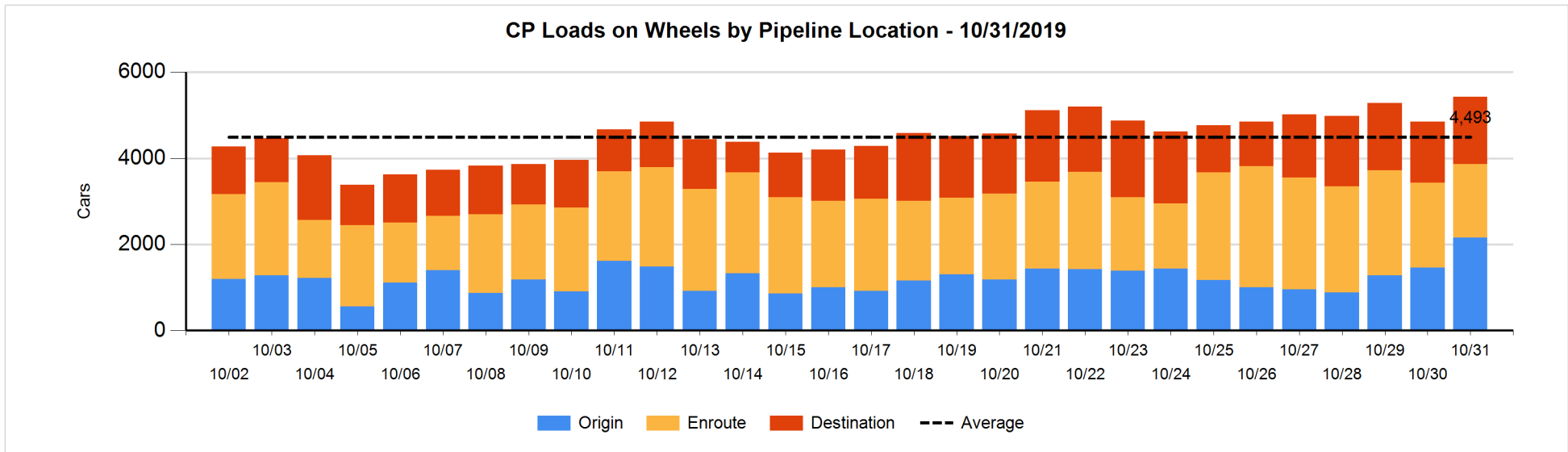
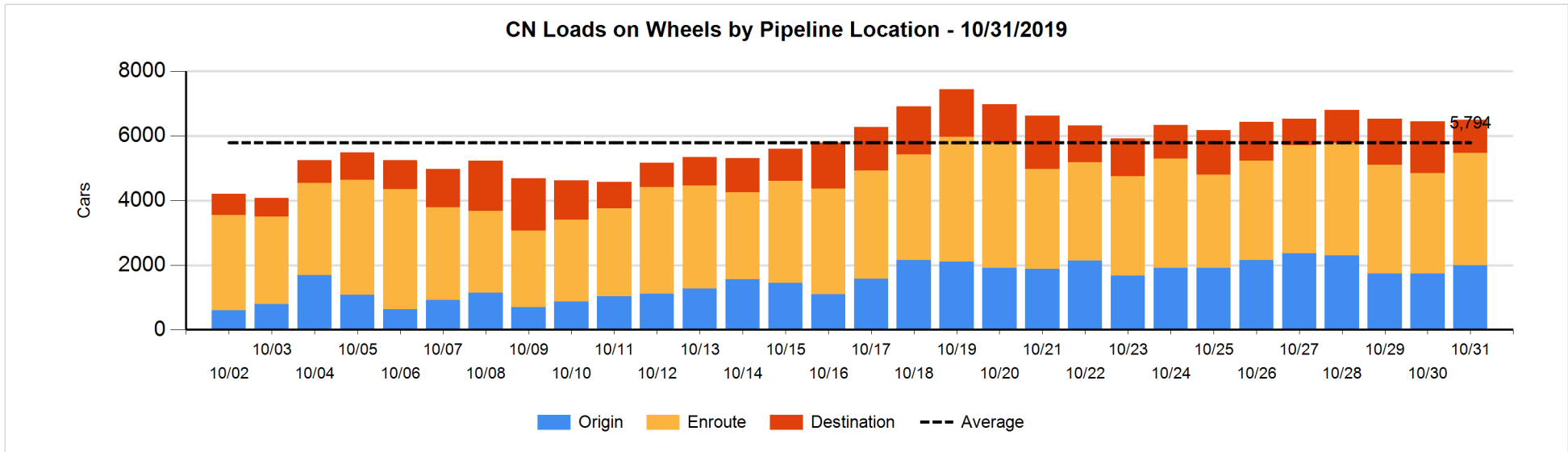


**Daily Loads on Wheels By Pipeline Location - 10/31/2019**

	E Canada	Prince Rupert	Thunder Bay	USA/MEX	Vancouver	Total
CN						
Origin	4	812	432	91	662	2,001
Enroute	573	951	424	207	1,308	3,463
Destination	25	386	140	31	455	1,037
	602	2,149	996	329	2,425	6,501
CP						
Origin	30		631	99	1,401	2,161
Enroute	2		514	35	1,154	1,705
Destination	3		475	2	1,080	1,560
	35		1,620	136	3,635	5,426
US Rail / Short Line						
Origin						
Enroute				200		200
Destination	8			71	26	105
	8			271	26	305

**Change in Daily Loads on Wheels By Pipeline Location - Prior 24 Hours**

	E Canada	Prince Rupert	Thunder Bay	USA/MEX	Vancouver	Total
CN						
Origin	-109	259	189	2	-83	258
Enroute	80	-5	218	-42	102	353
Destination	-167	-36	-137	-4	-210	-554
	-196	218	270	-44	-191	57
CP						
Origin	29		185	-2	491	703
Enroute	-3		80	-54	-290	-267
Destination	2		47	-5	93	137
	28		312	-61	294	573
US Rail / Short Line						
Origin						
Enroute				-9		-9
Destination	0			33	-8	25
	0			24	-8	16

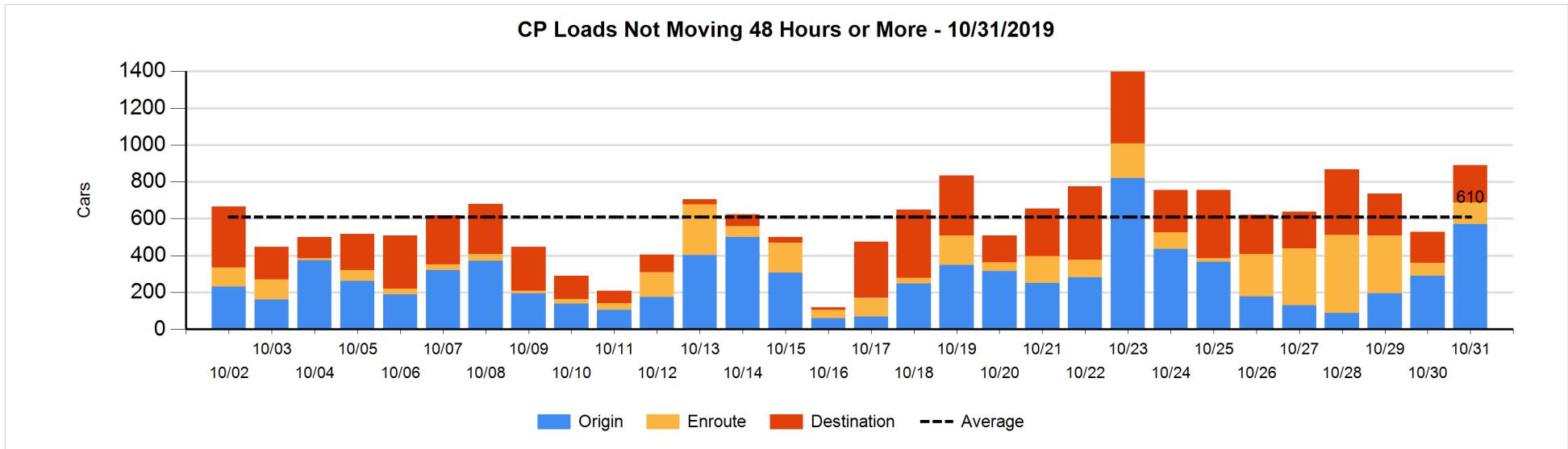
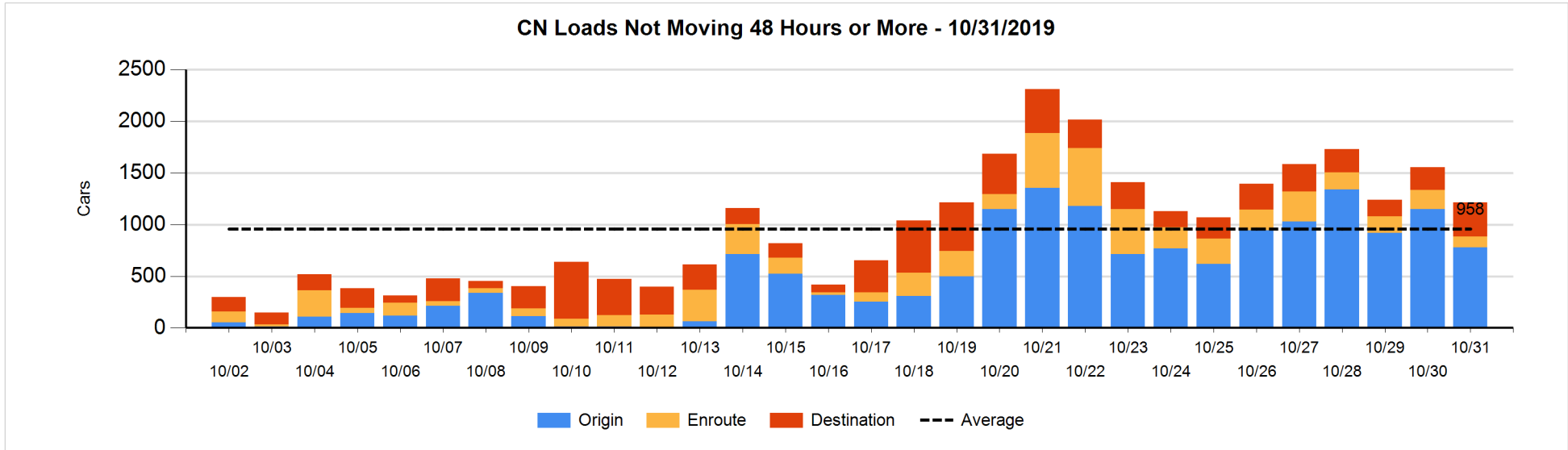


**Loads Not Moving 48 Hours or More - 10/31/2019**

	E Canada	Prince Rupert	Thunder Bay	USA/MEX	Vancouver	Total
<b>CN</b>						
Origin	4	401		38	333	776
Enroute	54	25	3	2	24	108
Destination	17	205	3	22	81	328
	75	631	6	62	438	1212
<b>CP</b>						
Origin	1			98	472	571
Enroute			44	4	68	116
Destination			126		76	202
	1		170	102	616	889
<b>US Rail / Short Line</b>						
Origin						
Enroute				88		88
Destination				22	2	24
				110	2	112

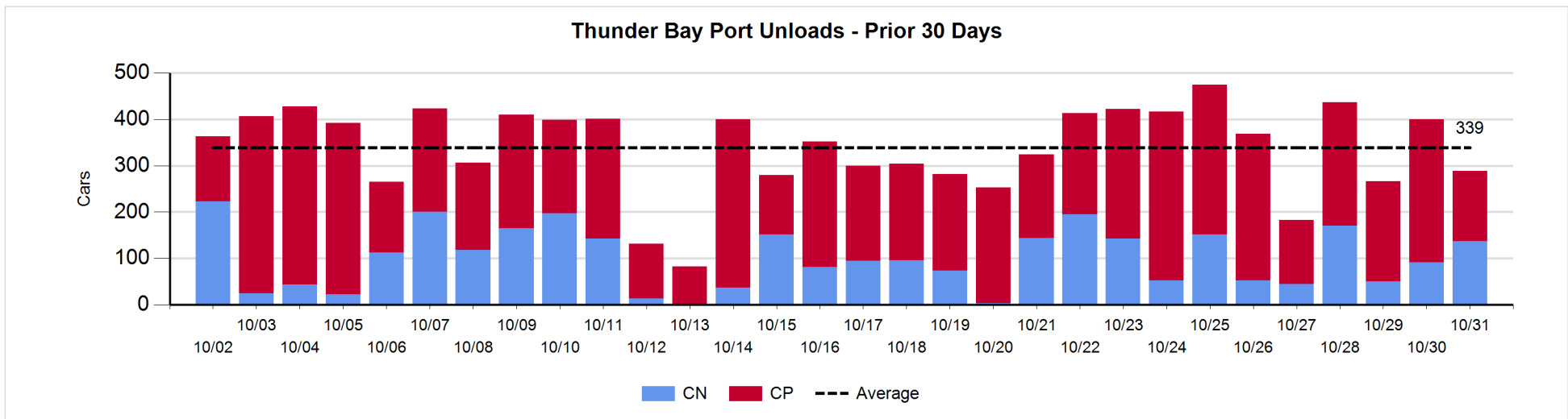
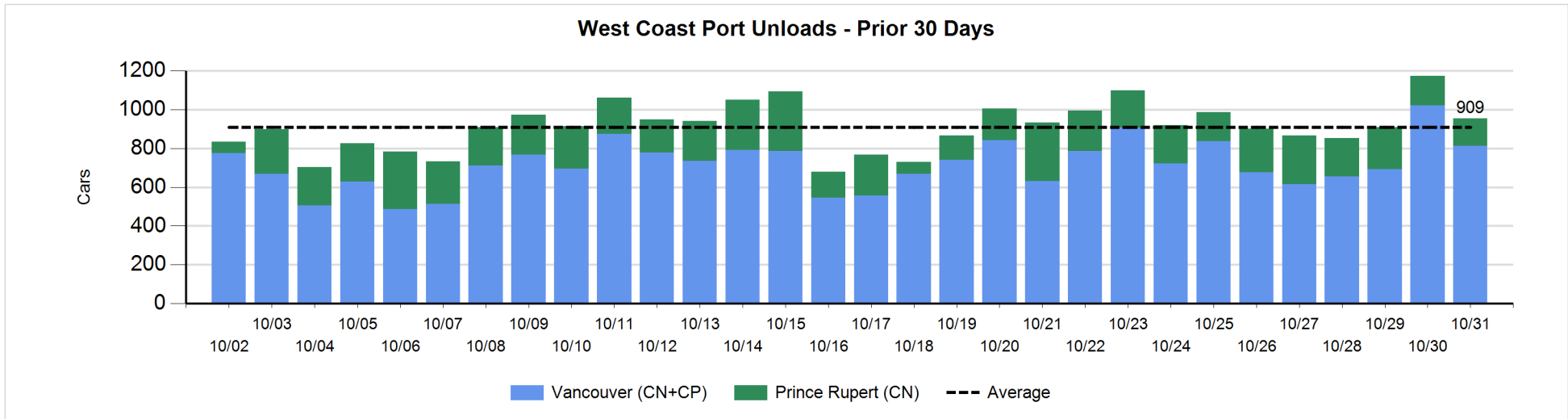
**Change in Loads Not Moving 48 Hours or More - 10/31/2019**

	E Canada	Prince Rupert	Thunder Bay	USA/MEX	Vancouver	Total
<b>CN</b>						
Origin	-3	-4	-99	6	-274	-374
Enroute	21	-105	-4	-1	13	-76
Destination	12	101	-43	6	32	108
	30	-8	-146	11	-229	-342
<b>CP</b>						
Origin	0		-112	96	297	281
Enroute	-1		42	4	0	45
Destination			9		26	35
	-1		-61	100	323	361
<b>US Rail / Short Line</b>						
Origin						
Enroute				80		80
Destination				-8	-8	-16
				72	-8	64



**Port Unloads - 10/31/2019**

	Prince Rupert	Vancouver	West Coast Total	Thunder Bay	Total
CN	143	330	473	137	610
CP		482	482	152	634
	143	812	955	289	1,244





**Port Terminal Status**

**Vancouver**

Daily Activity for 10/31/2019

	Cars Arrived	Cars Received in Interchange	Cars Delivered in Interchange	Cars Placed for Unloading	Loads on Wheels at Destination As of 10/31/2019
CN	199	4	2	430	455
CP	501		6	417	1,080
SRY		4		11	26

**Port Unloads**

	10/31	10/30	Week To Date	Last Week
CN	330	417	1,281	2,381
CP	482	603	1,900	2,793
SRY	12	20	57	61

**Age Profile of Loaded Cars Waiting Placement for Unloading**

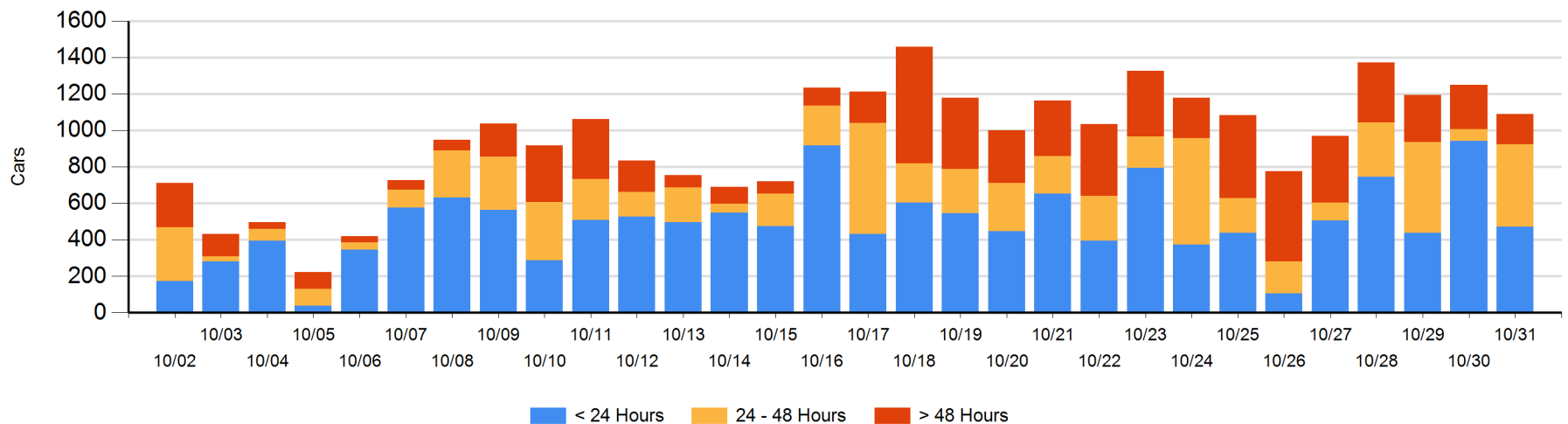
**Today**

	< 24 Hrs	24 - 48 Hrs	> 48-72 Hrs	> 72 Hrs	Total On Hand
CN	91	99	1	84	275
CP	381	352	13	69	815
SRY					0

**Change in Last 24 Hours**

	< 24 Hrs	24-48 Hrs	48 - 72 Hrs	> 72 Hrs
CN	-239	92	-52	29
CP	-230	293	-83	29
SRY				

**Loaded Cars on Hand Vancouver Waiting for Placement - Last 30 Days All Railways**



**Port Terminal Status**

**Prince Rupert**

Daily Activity for 10/31/2019

	Cars Arrived	Cars Received in Interchange	Cars Delivered in Interchange	Cars Placed for Unloading	Loads on Wheels at Destination As of 10/31/2019
CN	124			124	386

**Port Unloads**

	10/31	10/30	Week To Date	Last Week
CN	143	154	711	1,523

**Age Profile of Loaded Cars Waiting Placement for Unloading**

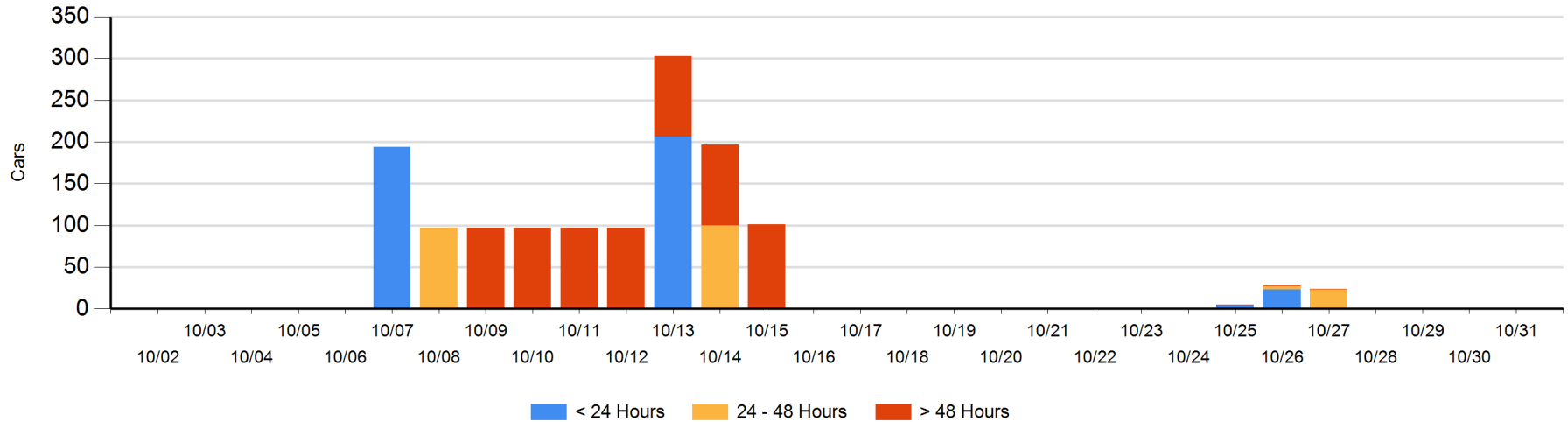
**Today**

	< 24 Hrs	24 - 48 Hrs	> 48-72 Hrs	> 72 Hrs	Total On Hand
CN					0

**Change in Last 24 Hours**

	< 24 Hrs	24-48 Hrs	48 - 72 Hrs	> 72 Hrs
CN				

Loaded Cars on Hand Prince Rupert Waiting for Placement - Last 30 Days All Railways



**Port Terminal Status**

**Thunder Bay**

Daily Activity for 10/31/2019

	Cars Arrived	Cars Received in Interchange	Cars Delivered in Interchange	Cars Placed for Unloading	Loads on Wheels at Destination As of 10/31/2019
CN				192	140
CP	199			131	475

**Port Unloads**

	10/31	10/30	Week To Date	Last Week
CN	137	91	449	785
CP	152	309	943	1,817

**Age Profile of Loaded Cars Waiting Placement for Unloading**

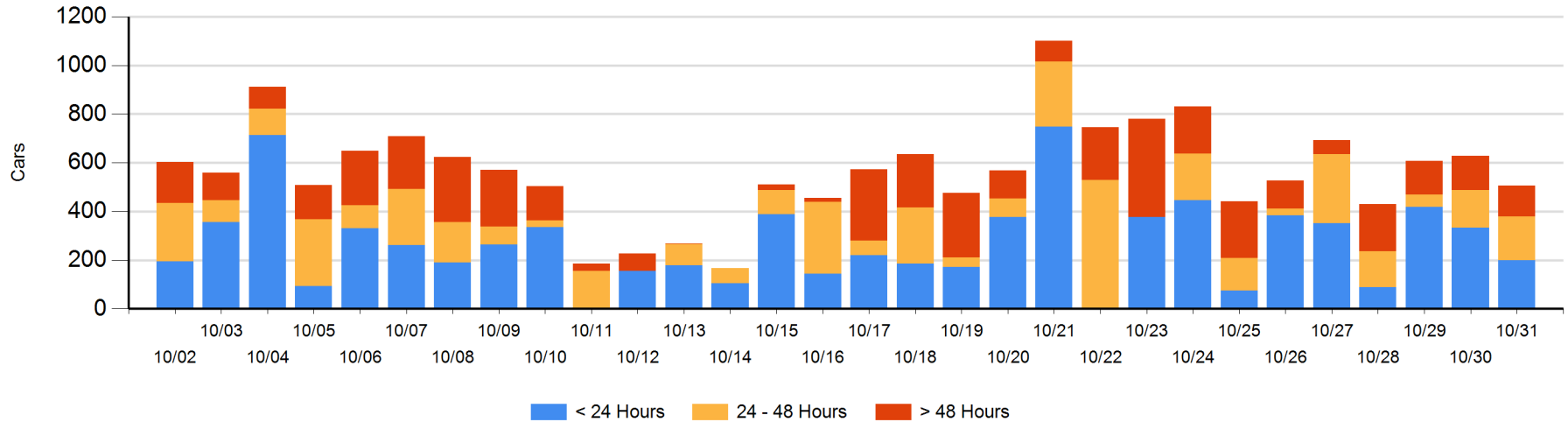
**Today**

	< 24 Hrs	24 - 48 Hrs	> 48-72 Hrs	> 72 Hrs	Total On Hand
CN		46			46
CP	199	135	11	114	459

**Change in Last 24 Hours**

	< 24 Hrs	24-48 Hrs	48 - 72 Hrs	> 72 Hrs
CN	-95	-71		-25
CP	-40	99	-36	45

Loaded Cars on Hand Thunder Bay Waiting for Placement - Last 30 Days All Railways



## Measurement Definitions

Loads on Wheels	<p>Count of loaded rail cars including all rail cars that have been released loaded at origin and have not been reported by the railway as unloaded at destination.</p> <p>Counts include all rail cars (hopper cars and boxcars) moving within a pipeline.</p>
Loads Not Moving	<p>Loaded rail cars for which the railways have not reported a movement event for 48 hours or more whether the rail car is at origin, enroute or at destination.</p>
Port Unloads	<p>Count of rail cars reported by railways as unloaded at the western port destinations of Vancouver, Prince Rupert and Thunder Bay.</p> <p>Unload counts include all rail cars (hopper cars and boxcars) unloaded by all receivers including major port terminals, transloaders and other receivers.</p>
Cars Arrived	<p>Count of rail cars reported as arrived at the destination railway terminal.</p>
Cars Received in Interchange	<p>Count of rail cars received in interchange by each railway within a destination railway terminal. Interchange activity is tracked for the Vancouver and Thunder Bay pipelines as applicable.</p>
Cars Delivered in Interchange	<p>Count of rail cars delivered in interchange by each railway within a destination railway terminal. Interchange activity is tracked for the Vancouver and Thunder Bay pipelines as applicable.</p>
Cars Placed for Unloading	<p>Count of rail cars reported by the railways as placed loaded at the receiver's facility for unloading.</p>
Loads on Wheels at Destination	<p>Count of rail cars that remain under load within the destination railway terminal including rail cars that have been reported as placed for unloading but not yet reported as unloaded.</p>
Waiting Placement for Unloading	<p>Count of rail cars that have been reported as arrived at the destination railway terminal but not reported as placed for unloading by the railway.</p> <p>For the Ports of Vancouver, Prince Rupert and Thunder Bay the count of rail cars waiting placement for unloading is categorized by age – i.e. the elapsed time from arrival at destination to the current report date.</p>