

SPEED READ

- Loads on wheels gained overnight, marking higher CP volumes offset by a decline in CN volumes. On a net basis, volumes increased due to higher volumes across all corridors other than Prince Rupert.
- Network fluidity deteriorated overnight, led by a rise in idle car counts on both CN and CP by 78% (+265) and 242% (+418), respectively. The total count of cars for 4+ days on both railways rose 30% (+37) overnight - currently at 160 cars.
- One day in Week 5 unloads now behind prior week's performance by more than 750 unloads, reflecting lower unloads at Vancouver and Thunder Bay offset by improved week over week performance at Prince Rupert. The reduced unloads through the first day of the week have likely been adversely affected by the Labor Day holiday.

Loads on Wheels

- Loads on wheels gained 6% (+373) overnight, due to higher volumes on CP offset by lower traffic on CN - combined total at 7,054 and 1% above the trailing 30-day average.
- On a net basis, the rise in loads on wheels reflects higher volumes across all corridors other than Prince Rupert.
- CN volumes fell 3% (-94) overnight, with lower volumes across all corridors other than E. Canada and Thunder Bay. System wide CN loads on wheels presently at 3,300 and 1% above the trailing 30-day average.
- CP volumes increased significantly by 13% (+411) overnight, driven by a rise in volumes in the Vancouver and Thunder Bay corridors offset by a decline in volumes in the USA/MEX corridor. CP system wide loads on wheels currently at 3,585 and 1% below the trailing 30-day average.
- Vancouver presently at 3,921, increased 8% (+302) overnight, now 9% below the trailing 30-day average.
- The Prince Rupert pipeline currently at 806, decreased slightly by 1% (-11) overnight and have now decreased for the fourth consecutive day, and 14% above the trailing 30-day average.
- Thunder Bay volumes increased for the fourth consecutive day, up 5% (+70) overnight - presently at 1,572 and 30% above the trailing 30-day average, with 69% of traffic moving on CP.

Hopper Car Rationing

- No hopper cars were rationed by either CN or CP in week 3.

Loads Not Moving

- **The count of cars not moving for 48+ hours rose significantly by 133% (+683) overnight, reflecting higher counts on both CN and CP. Idle car counts currently at 1,195 and 39% above the trailing 30-day average.**
- CN
 - **The count of idle cars for 48+ hours increased significantly by 78% (+265) overnight - presently at 604 cars.**
 - The number of cars idle for 4+ days gained significantly by 59% (+23) overnight - currently at 62 cars.
 - The count of cars not moving for 7+ days gained significantly by 133% (+16) overnight - presently at 28 cars.
 - Vancouver represents 57% of all idle cars.
 - In total 64% of all idle cars are dwelling at origin locations.
- CP
 - **CP idle car counts for 48+ hours gained significantly by 242% (+418) overnight - currently at 591 cars.**

- The number of cars idle for 4+ days increased 17% (+14) overnight - currently at 98 cars.
- The number of cars idle for 7+ days gained significantly by 50% (+1) overnight - presently at 03 cars.
- Vancouver accounts for 54% of all idle cars.
- In total 31% of all idle cars are dwelling at origin locations.

Port Performance

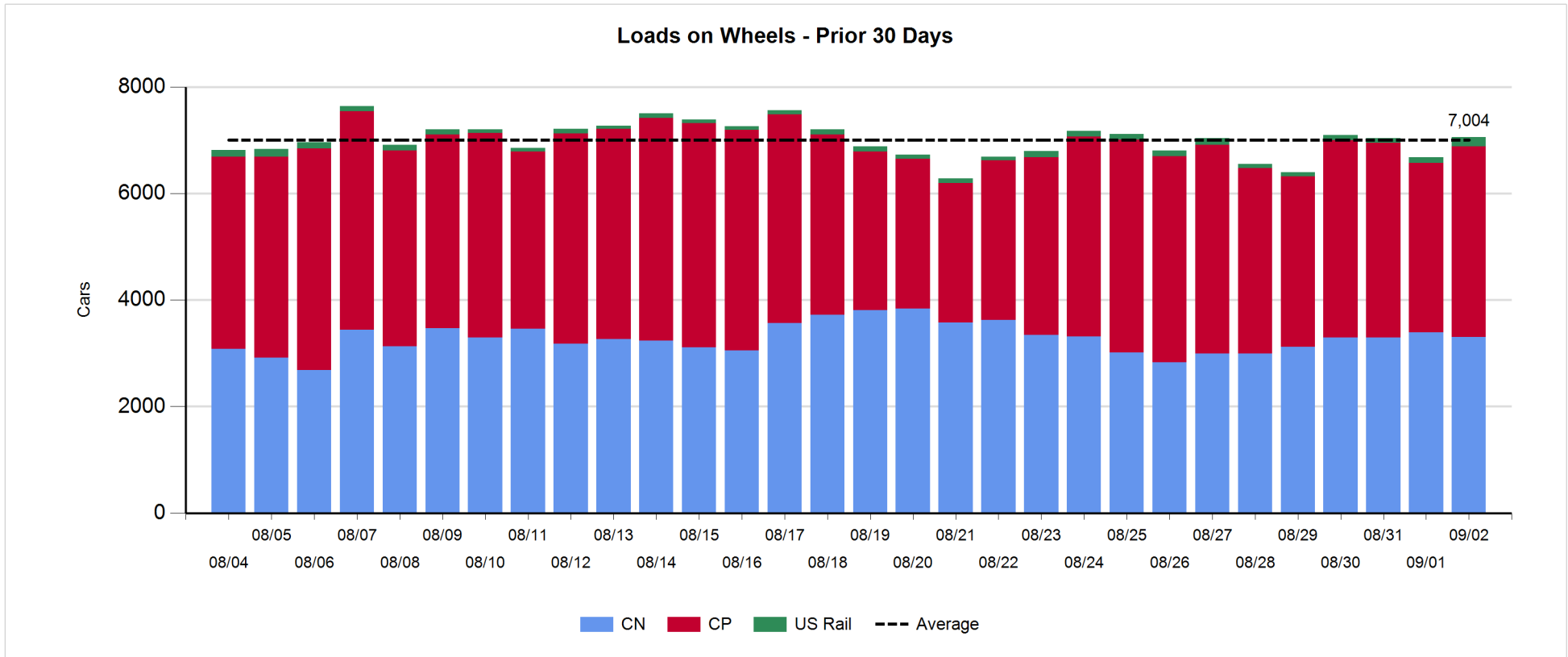
- CN and CP reported a total of 294 cars unloaded at the three major ports, the lowest seen in the last 30 days, now 67% below the trailing 30-day average. One day in Week 5 unloads now behind last week's pace by more than 750 unloads, reflecting lower unloads at Vancouver and Thunder Bay offset by higher unloads at Prince Rupert.
- Vancouver
 - 37 unloads, the lowest seen in the last 30 days, was reported by CN and CP at the Port of Vancouver; CN - 13 and CP - 24. One day in Week 5 unloads are tracking behind last week's performance by more than 500 unloads.
 - There are about 1,250 cars on site at Vancouver with more than 450 cars arriving at the port in the last 24 hours.
 - CN and CP have 1,150 cars in British Columbia en route to Vancouver, with 700 cars at Kamloops and west, and 61% of traffic moving on CP.
- Prince Rupert
 - Prince Rupert reported 215 unloads, now ahead of last week's unloads after one day by more than 100 unloads.
 - Loads on wheels now below 1,000 cars - presently at 806 cars.
 - There are 200 cars west of Jasper en route to Prince Rupert.
 - There are around 200 cars on site at Prince Rupert with 400 cars arriving at the port in the last 24 hours.
- Thunder Bay
 - 42 unloads were reported at Thunder Bay yesterday. One day in Week 5 unloads are tracking behind last week's pace by 350 unloads.
 - There are more than 1,150 cars on site at Thunder Bay with 750 cars arriving at the port in the prior 24 hours.
 - There are 300 cars en route to Thunder Bay from Winnipeg and east.

Daily Loads on Wheels - 9/2/2019

	E Canada	Prince Rupert	Thunder Bay	USA/MEX	Vancouver	Total
CN	212	806	489	225	1,568	3,300
CP	178		1,083	56	2,268	3,585
Short Line					47	47
US Rail				84	38	122
	390	806	1,572	365	3,921	7,054

Change in Loads on Wheels - Prior 24 Hours

	E Canada	Prince Rupert	Thunder Bay	USA/MEX	Vancouver	Total
CN	11	-11	0	-18	-76	-94
CP	0		70	-7	348	411
Short Line					-8	-8
US Rail				26	38	64
	11	-11	70	1	302	373

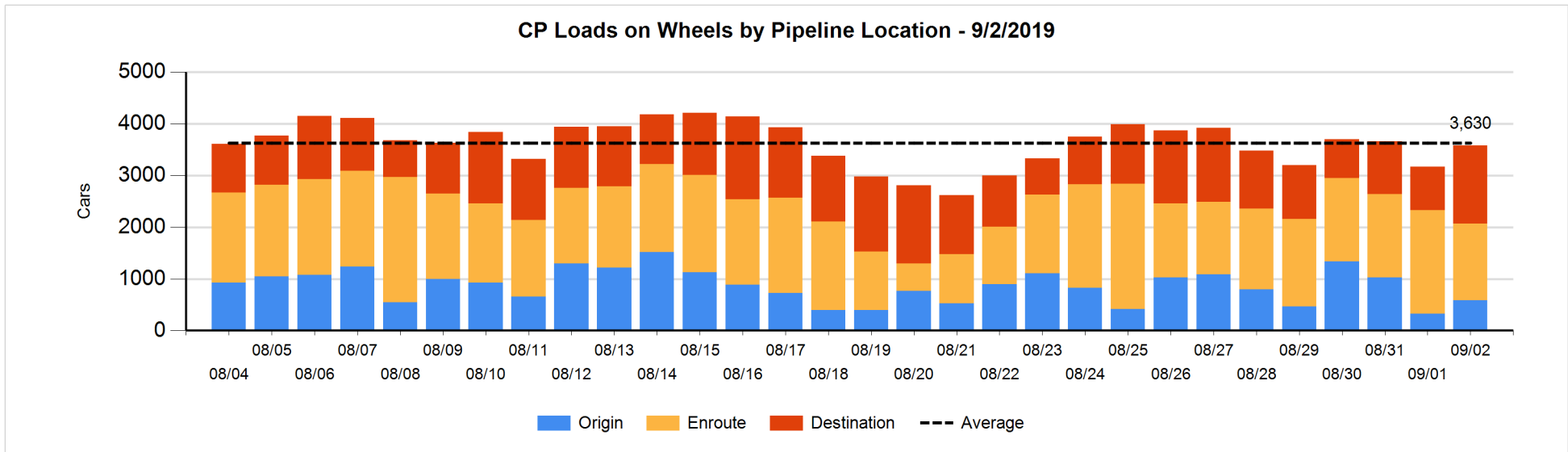
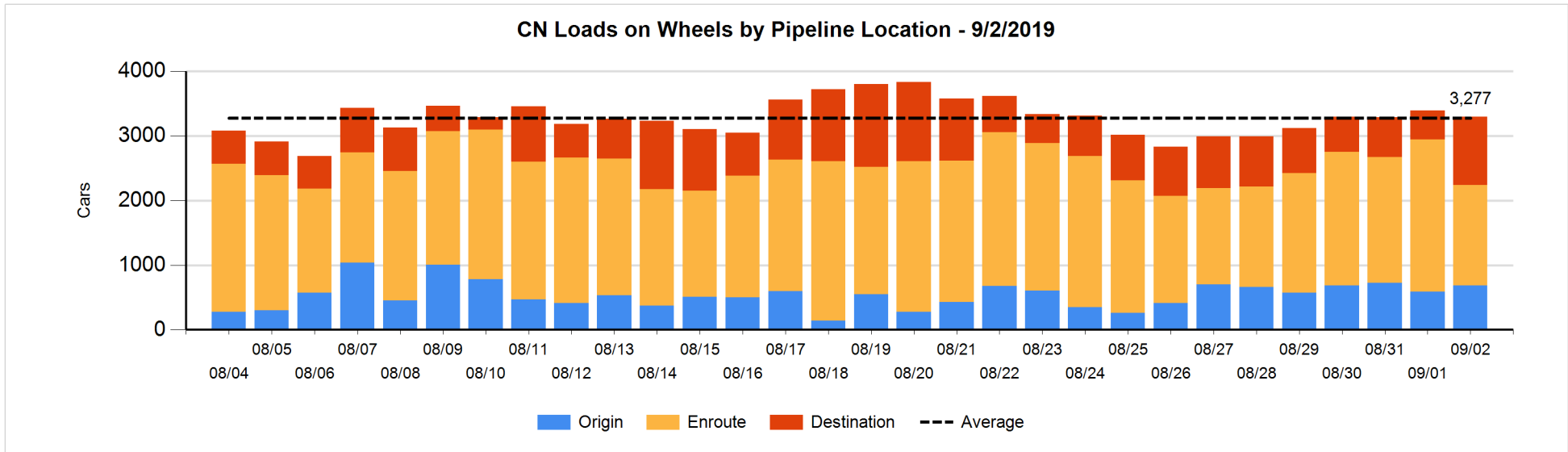


Daily Loads on Wheels By Pipeline Location - 9/2/2019

	E Canada	Prince Rupert	Thunder Bay	USA/MEX	Vancouver	Total
CN						
Origin	43	273		3	366	685
Enroute	166	349	106	179	756	1,556
Destination	3	184	383	43	446	1,059
	212	806	489	225	1,568	3,300
CP						
Origin	7		113	1	460	581
Enroute	170		188	27	1,102	1,487
Destination	1		782	28	706	1,517
	178		1,083	56	2,268	3,585
US Rail / Short Line						
Origin						
Enroute				62		62
Destination				22	85	107
				84	85	169

Change in Daily Loads on Wheels By Pipeline Location - Prior 24 Hours

	E Canada	Prince Rupert	Thunder Bay	USA/MEX	Vancouver	Total
CN						
Origin	25	204	-106	0	-26	97
Enroute	0	-390	-264	-47	-101	-802
Destination	-14	175	370	29	51	611
	11	-11	0	-18	-76	-94
CP						
Origin	0		-22	0	279	257
Enroute	0		-236	-16	-268	-520
Destination	0		328	9	337	674
	0		70	-7	348	411
US Rail / Short Line						
Origin						
Enroute				25		25
Destination				1	30	31
				26	30	56

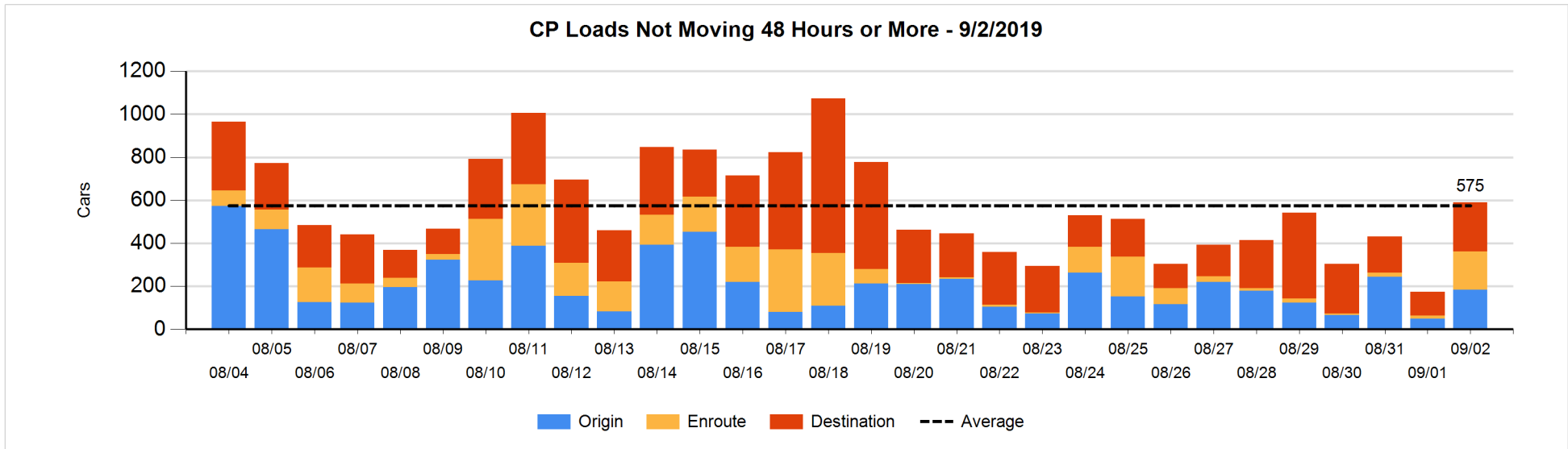
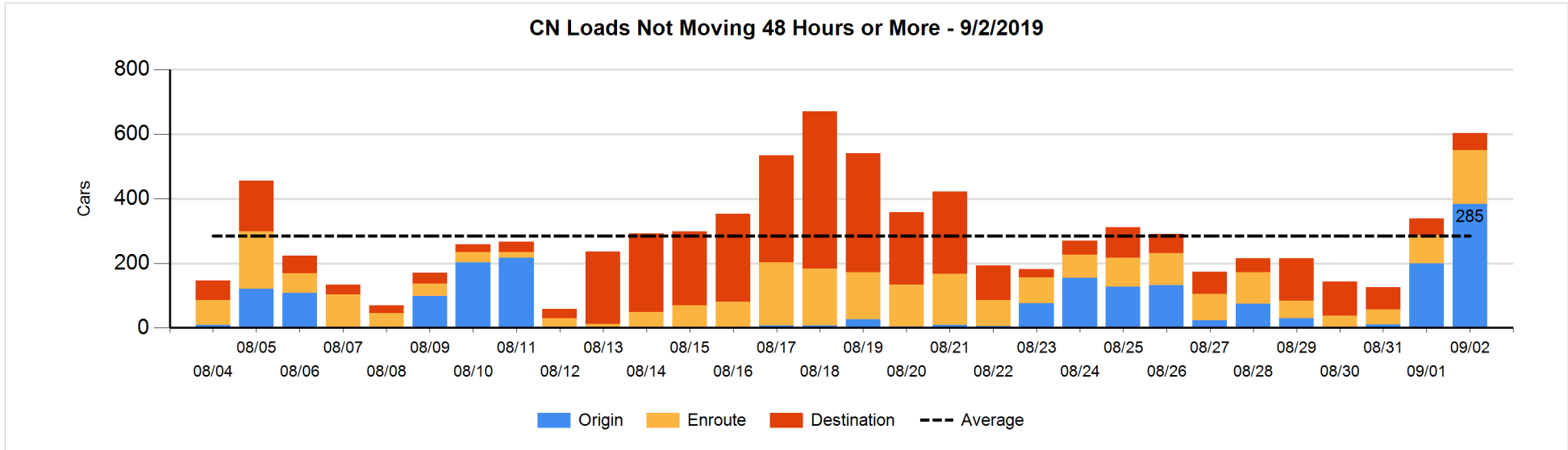


Loads Not Moving 48 Hours or More - 9/2/2019

	E Canada	Prince Rupert	Thunder Bay	USA/MEX	Vancouver	Total
CN						
Origin	18	69			297	384
Enroute	88	9		46	23	166
Destination	3	1	13	12	25	54
	109	79	13	58	345	604
CP						
Origin	7		1	1	174	183
Enroute	112			14	52	178
Destination	1		116	19	94	230
	120		117	34	320	591
US Rail / Short Line						
Origin						
Enroute				10		10
Destination				15	17	32
				25	17	42

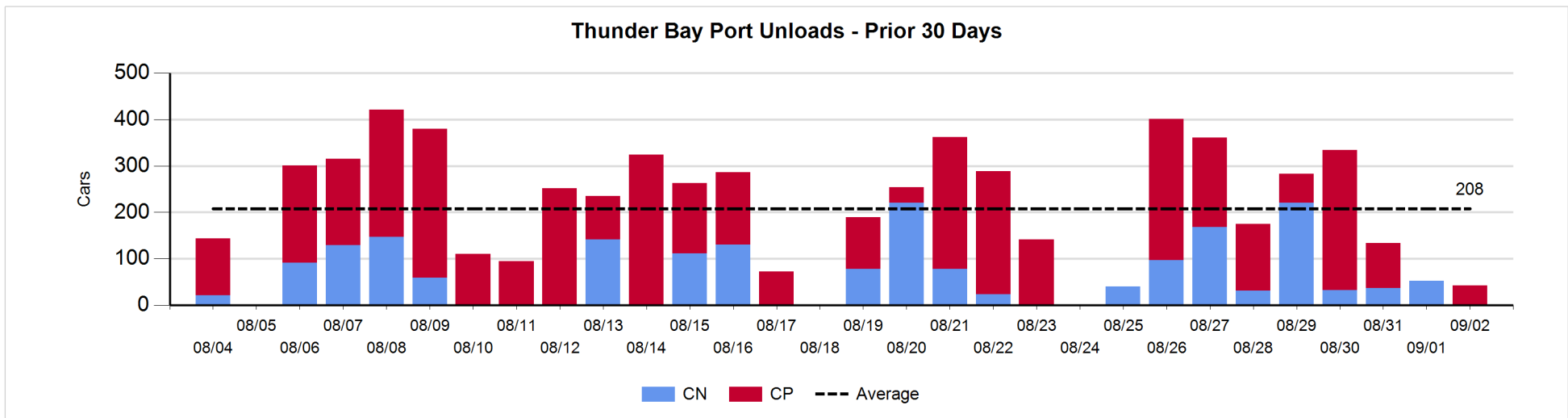
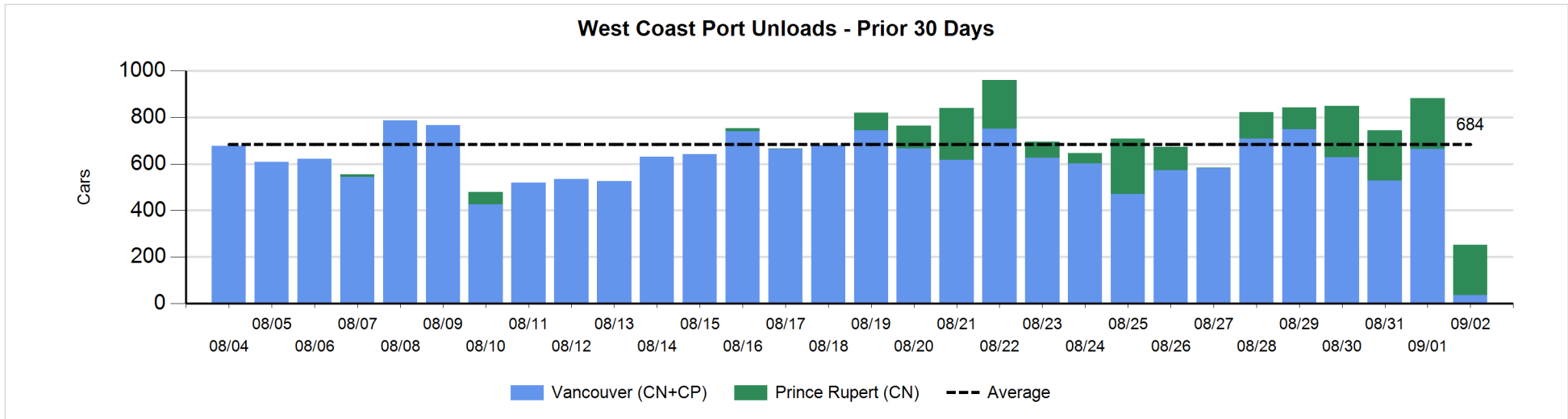
Change in Loads Not Moving 48 Hours or More - 9/2/2019

	E Canada	Prince Rupert	Thunder Bay	USA/MEX	Vancouver	Total
CN						
Origin	0	0			185	185
Enroute	55	1		20	1	77
Destination	-14	0	0	0	17	3
	41	1	0	20	203	265
CP						
Origin	0		0	0	135	135
Enroute	111			13	38	162
Destination	0		95	14	12	121
	111		95	27	185	418
US Rail / Short Line						
Origin						
Enroute				2		2
Destination				5	-2	3
				7	-2	5



Port Unloads - 9/2/2019

	Prince Rupert	Vancouver	West Coast Total	Thunder Bay	Total
CN	215	13	228		228
CP		24	24	42	66
	215	37	252	42	294



Port Terminal Status

Vancouver

Daily Activity for 9/2/2019

	Cars Arrived	Cars Received in Interchange	Cars Delivered in Interchange	Cars Placed for Unloading	Loads on Wheels at Destination As of 9/2/2019
CN	196	7	197	98	446
CP	271	196	47	195	706
SRY		3		1	47

Port Unloads

	09/02	09/01	Week To Date	Last Week
CN	13	317	13	1,890
CP	24	346	24	2,542
SRY	12	1	12	63

Age Profile of Loaded Cars Waiting Placement for Unloading

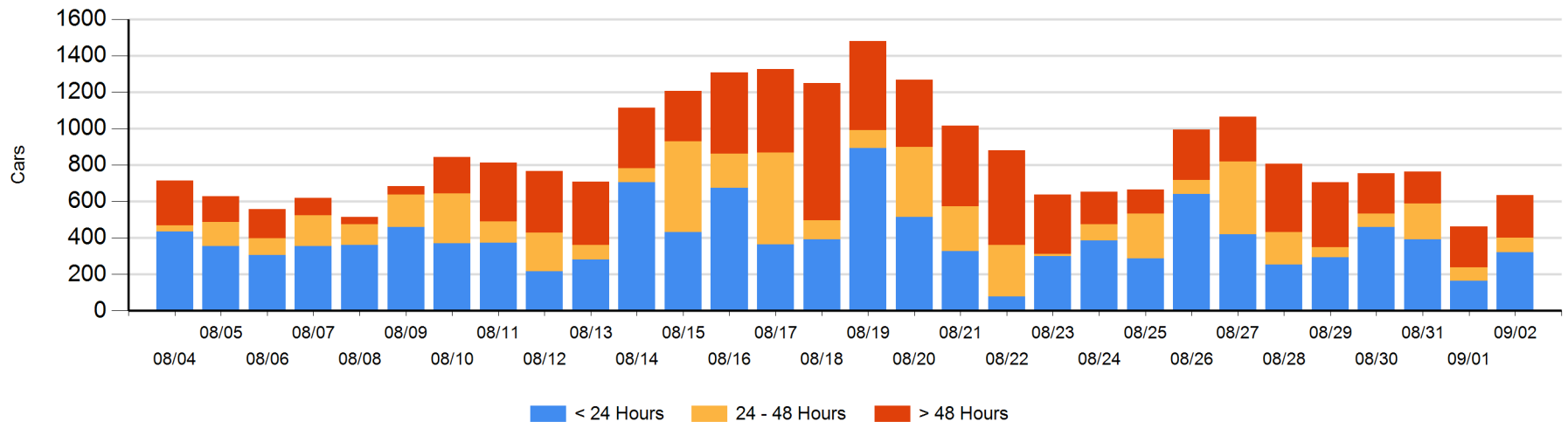
Today

	< 24 Hrs	24 - 48 Hrs	> 48-72 Hrs	> 72 Hrs	Total On Hand
CN	161	1	50	61	273
CP	160	80	12	98	350
SRY				13	13

Change in Last 24 Hours

	< 24 Hrs	24-48 Hrs	48 - 72 Hrs	> 72 Hrs
CN	160	-63	25	13
CP	-2	68	-95	69
SRY			-13	13

Loaded Cars on Hand Vancouver Waiting for Placement - Last 30 Days All Railways



Port Terminal Status

Prince Rupert

Daily Activity for 9/2/2019

	Cars Arrived	Cars Received in Interchange	Cars Delivered in Interchange	Cars Placed for Unloading	Loads on Wheels at Destination As of 9/2/2019
CN	390			389	184

Port Unloads

	09/02	09/01	Week To Date	Last Week
CN	215	220	215	964

Age Profile of Loaded Cars Waiting Placement for Unloading

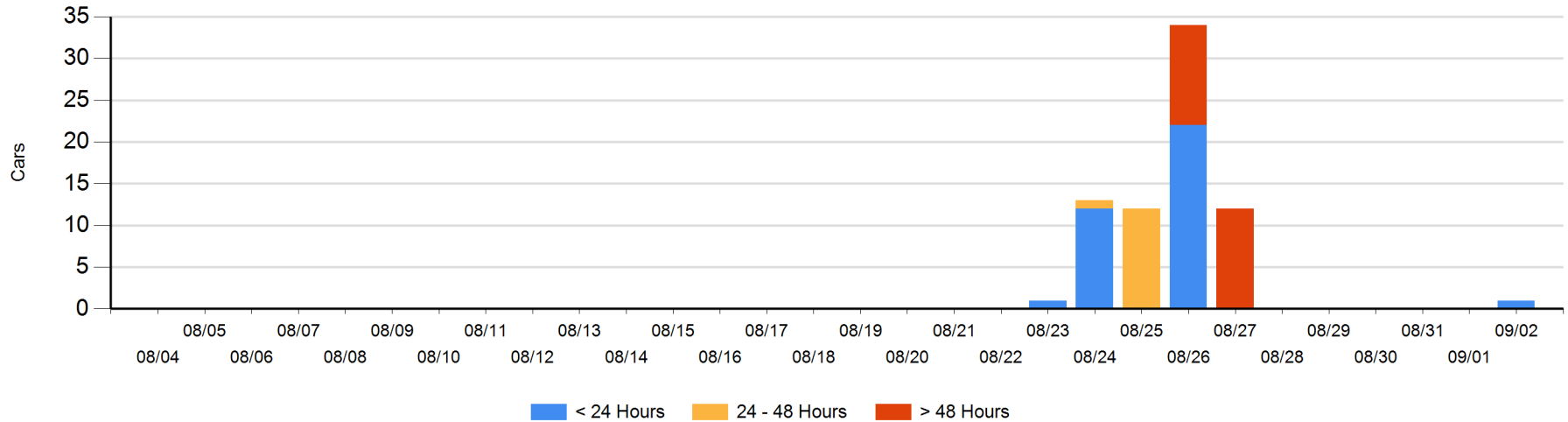
Today

	< 24 Hrs	24 - 48 Hrs	> 48-72 Hrs	> 72 Hrs	Total On Hand
CN	1				1

Change in Last 24 Hours

	< 24 Hrs	24-48 Hrs	48 - 72 Hrs	> 72 Hrs
CN	1			

Loaded Cars on Hand Prince Rupert Waiting for Placement - Last 30 Days All Railways



Port Terminal Status

Thunder Bay

Daily Activity for 9/2/2019

	Cars Arrived	Cars Received in Interchange	Cars Delivered in Interchange	Cars Placed for Unloading	Loads on Wheels at Destination As of 9/2/2019
CN	370			80	383
CP	370			119	782

Port Unloads

	09/02	09/01	Week To Date	Last Week
CN		53		639
CP	42		42	1,102

Age Profile of Loaded Cars Waiting Placement for Unloading

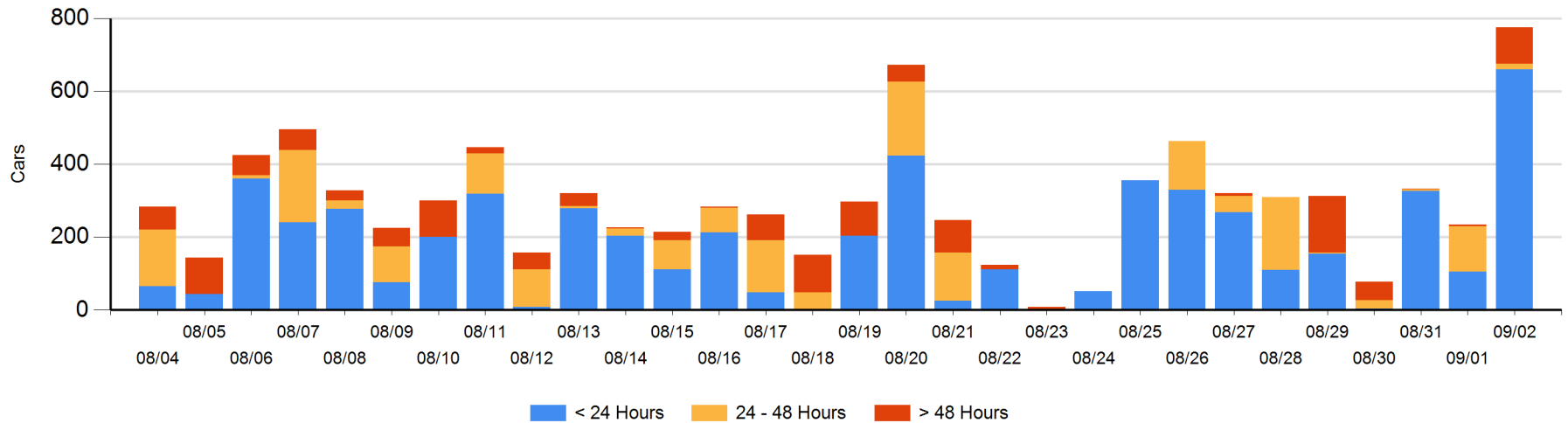
Today

	< 24 Hrs	24 - 48 Hrs	> 48-72 Hrs	> 72 Hrs	Total On Hand
CN	290			2	292
CP	370	15	95	3	483

Change in Last 24 Hours

	< 24 Hrs	24-48 Hrs	48 - 72 Hrs	> 72 Hrs
CN	290		-2	2
CP	265	-109	93	2

Loaded Cars on Hand Thunder Bay Waiting for Placement - Last 30 Days All Railways



Measurement Definitions

Loads on Wheels	<p>Count of loaded rail cars including all rail cars that have been released loaded at origin and have not been reported by the railway as unloaded at destination.</p> <p>Counts include all rail cars (hopper cars and boxcars) moving within a pipeline.</p>
Loads Not Moving	<p>Loaded rail cars for which the railways have not reported a movement event for 48 hours or more whether the rail car is at origin, enroute or at destination.</p>
Port Unloads	<p>Count of rail cars reported by railways as unloaded at the western port destinations of Vancouver, Prince Rupert and Thunder Bay.</p> <p>Unload counts include all rail cars (hopper cars and boxcars) unloaded by all receivers including major port terminals, transloaders and other receivers.</p>
Cars Arrived	<p>Count of rail cars reported as arrived at the destination railway terminal.</p>
Cars Received in Interchange	<p>Count of rail cars received in interchange by each railway within a destination railway terminal. Interchange activity is tracked for the Vancouver and Thunder Bay pipelines as applicable.</p>
Cars Delivered in Interchange	<p>Count of rail cars delivered in interchange by each railway within a destination railway terminal. Interchange activity is tracked for the Vancouver and Thunder Bay pipelines as applicable.</p>
Cars Placed for Unloading	<p>Count of rail cars reported by the railways as placed loaded at the receiver's facility for unloading.</p>
Loads on Wheels at Destination	<p>Count of rail cars that remain under load within the destination railway terminal including rail cars that have been reported as placed for unloading but not yet reported as unloaded.</p>
Waiting Placement for Unloading	<p>Count of rail cars that have been reported as arrived at the destination railway terminal but not reported as placed for unloading by the railway.</p> <p>For the Ports of Vancouver, Prince Rupert and Thunder Bay the count of rail cars waiting placement for unloading is categorized by age – i.e. the elapsed time from arrival at destination to the current report date.</p>