

## SPEED READ

- Loads on wheels decreased overnight, marking a decline in both CN and CP volumes. On a net basis, volumes fell due to reduced volumes in the Vancouver, Thunder Bay and Prince Rupert corridors offset by higher traffic in the E. Canada and USA/MEX corridors.
- Network fluidity improved overnight, led by a decline in idle car counts on both CN and CP by 27% (-162) and 1% (-5), respectively. The total count of cars for 4+ days on both railways increased 112% (+179) overnight - currently at 339 cars.
- Two days in Week 5 unloads now behind prior week's performance by 150 unloads, reflecting lower unloads at Thunder Bay and Vancouver offset by improved week over week performance at Prince Rupert.

=====

## Loads on Wheels

- Loads on wheels decreased 9% (-650) overnight, due to reduced traffic on both CN and CP - combined total at 6,404 and 8% below the trailing 30-day average.
- On a net basis, the decline in loads on wheels reflects reduced volumes in the Vancouver, Thunder Bay and Prince Rupert corridors offset by higher traffic in the E. Canada and USA/MEX corridors.
- CN volumes declined significantly by 12% (-405) overnight, with lower volumes in the Vancouver, Prince Rupert and USA/MEX corridors offset by higher traffic in the Thunder Bay and E. Canada corridors. System wide CN loads on wheels currently at 2,895 and 11% below the trailing 30-day average.
- CP volumes decreased 6% (-216) overnight, driven by a decline in traffic in the Thunder Bay and Vancouver corridors offset by a rise in traffic in the USA/MEX and E. Canada corridors. CP system wide loads on wheels presently at 3,369 and 7% below the trailing 30-day average.
- Vancouver presently at 3,501, the lowest seen in the last 30 days, declined significantly by 11% (-420) overnight, now 18% below the trailing 30-day average.
- The Prince Rupert pipeline presently at 723, decreased 10% (-83) overnight and have now decreased for the fifth consecutive day, and 1% below the trailing 30-day average.
- Thunder Bay volumes declined 17% (-270) overnight - now at 1,302 and 8% above the trailing 30-day average, with 60% of traffic moving on CP.

## Hopper Car Rationing

- No hopper cars were rationed by either CN or CP in week 3.

## Loads Not Moving

- **The count of cars not moving for 48+ hours fell 16% (-167) overnight, marking reduced counts on both CN and CP. Idle car counts presently at 875 and 3% above the trailing 30-day average.**
- CN
  - **The count of idle cars for 48+ hours fell 27% (-162) overnight - presently at 442 cars.**
  - The number of cars idle for 4+ days gained significantly by 306% (+190) overnight - currently at 252 cars.
  - The count of cars not moving for 7+ days decreased 7% (-2) overnight - now at 26 cars.
  - Vancouver represents 48% of all idle cars.
  - In total 62% of all idle cars are dwelling at origin locations.
- CP
  - **CP idle car counts for 48+ hours decreased slightly by 1% (-5) overnight - presently at 433 cars.**

- The number of cars idle for 4+ days declined 11% (-11) overnight - presently at 87 cars.
- The number of cars idle for 7+ days declined 33% (-1) overnight - presently at 02 cars, the lowest seen in the last 30 days.
- Vancouver accounts for 72% of all idle cars.
- In total 12% of all idle cars are dwelling at origin locations.

### **Port Performance**

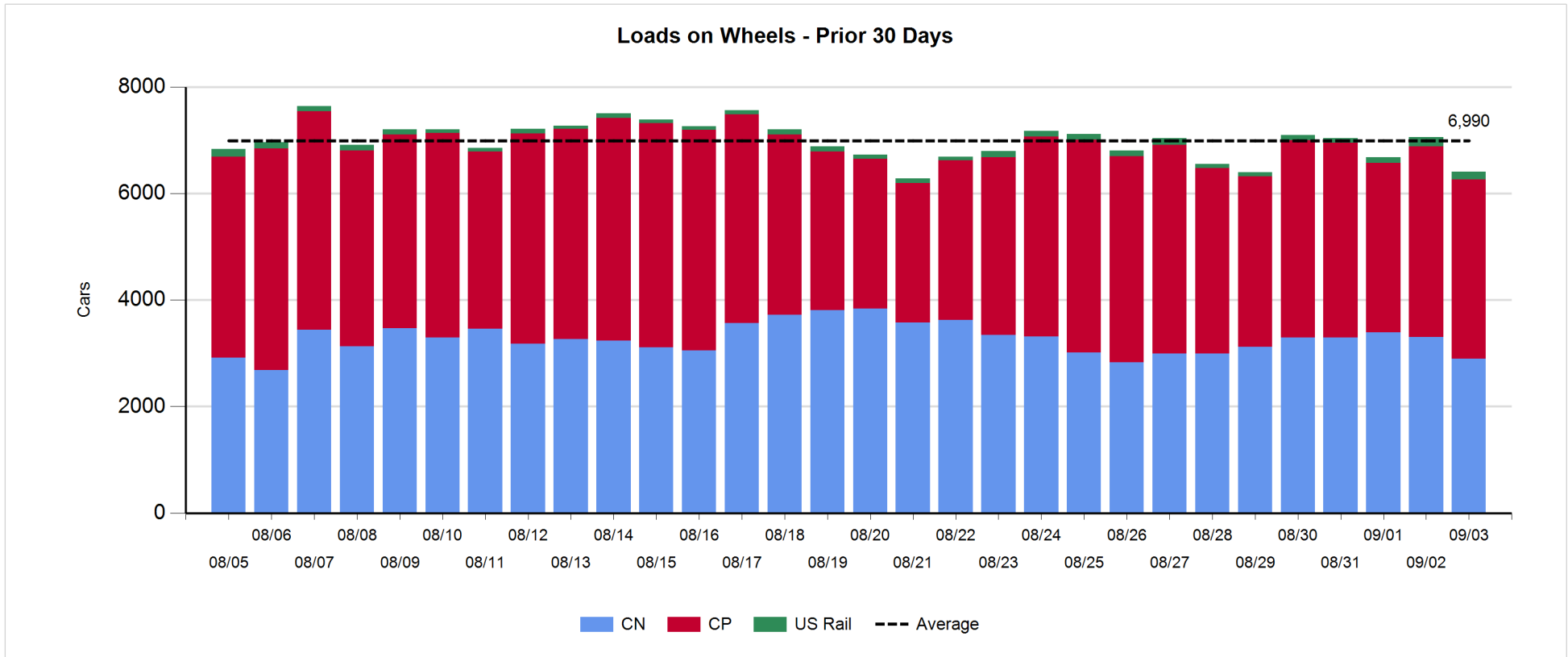
- CN and CP reported a total of 1,577 cars unloaded at the three major ports, the highest seen in the last 30 days, now 72% above the trailing 30-day average. Two days in Week 5 unloads now behind last week's pace by 150 unloads, reflecting lower unloads at Thunder Bay and Vancouver offset by higher unloads at Prince Rupert.
- Vancouver
  - 914 unloads, the highest seen in the last 30 days, was reported by CN and CP at the Port of Vancouver; CN - 392 and CP - 522. Two days in Week 5 unloads are tracking behind last week's performance by 200 unloads.
  - There are more than 1,300 cars on site at Vancouver with 1,000 cars arriving at the port in the last 24 hours.
  - CN and CP have 300 cars in British Columbia en route to Vancouver, with 150 cars at Kamloops and west, and 55% of traffic moving on CP.
- Prince Rupert
  - Prince Rupert reported 235 unloads, now ahead of last week's unloads after two days by 350 unloads.
  - Loads on wheels now below 1,000 cars - presently at 723 cars.
  - There are around 250 cars west of Jasper en route to Prince Rupert.
  - There are 50 cars on site at Prince Rupert with 100 cars arriving at the port in the last 24 hours.
- Thunder Bay
  - 428 unloads, the highest seen in the last 30 days, were reported at Thunder Bay yesterday. Two days in Week 5 unloads are tracking behind last week's pace by 300 unloads.
  - There are more than 900 cars on site at Thunder Bay with fewer than 200 cars arriving at the port in the prior 24 hours.
  - There are more than 200 cars en route to Thunder Bay from Winnipeg and east.

**Daily Loads on Wheels - 9/3/2019**

	E Canada	Prince Rupert	Thunder Bay	USA/MEX	Vancouver	Total
CN	238	723	520	203	1,211	2,895
CP	227		782	128	2,232	3,369
Short Line	1				41	42
US Rail				81	17	98
	466	723	1,302	412	3,501	6,404

**Change in Loads on Wheels - Prior 24 Hours**

	E Canada	Prince Rupert	Thunder Bay	USA/MEX	Vancouver	Total
CN	26	-83	31	-22	-357	-405
CP	49		-301	72	-36	-216
Short Line	1				-6	-5
US Rail				-3	-21	-24
	76	-83	-270	47	-420	-650

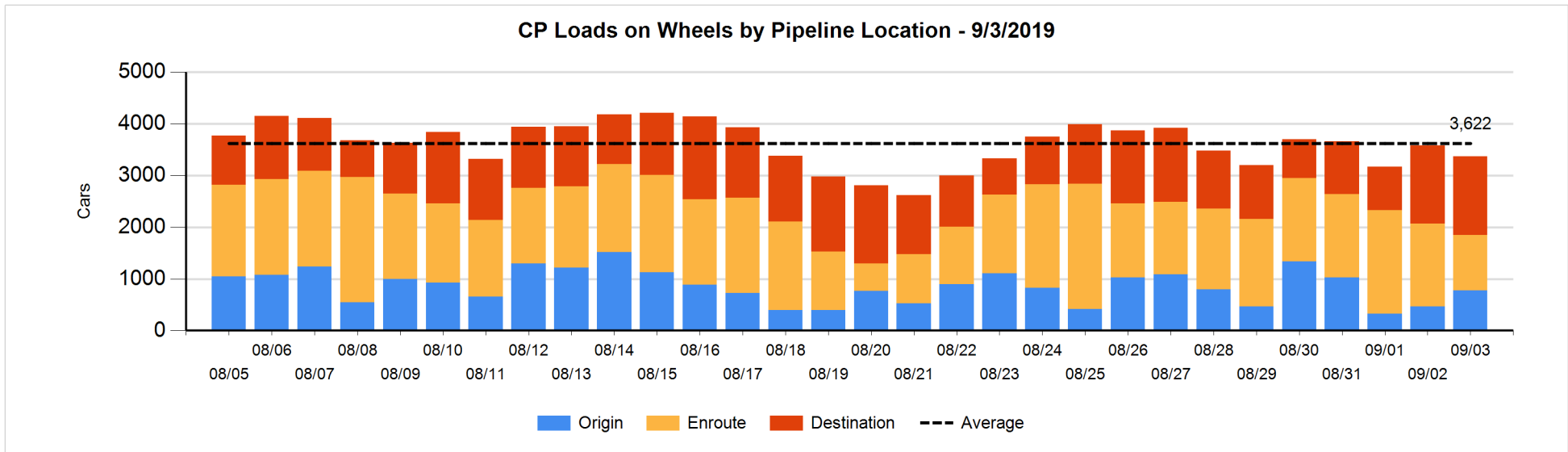
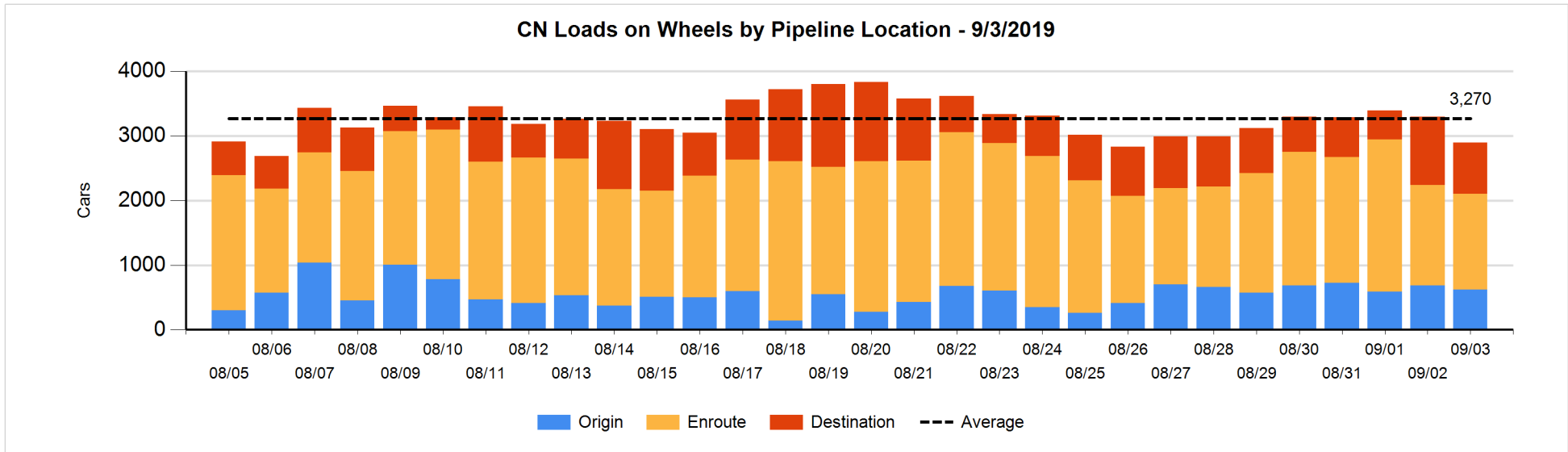


**Daily Loads on Wheels By Pipeline Location - 9/3/2019**

	E Canada	Prince Rupert	Thunder Bay	USA/MEX	Vancouver	Total
CN						
Origin	50	222		3	344	619
Enroute	160	446	156	167	557	1,486
Destination	28	55	364	33	310	790
	238	723	520	203	1,211	2,895
CP						
Origin	62		112	100	498	772
Enroute	161		114	9	790	1,074
Destination	4		556	19	944	1,523
	227		782	128	2,232	3,369
US Rail / Short Line						
Origin						
Enroute				57		57
Destination	1			24	58	83
	1			81	58	140

**Change in Daily Loads on Wheels By Pipeline Location - Prior 24 Hours**

	E Canada	Prince Rupert	Thunder Bay	USA/MEX	Vancouver	Total
CN						
Origin	7	-51		0	-22	-66
Enroute	-6	97	50	-12	-199	-70
Destination	25	-129	-19	-10	-136	-269
	26	-83	31	-22	-357	-405
CP						
Origin	55		-1	99	150	303
Enroute	-9		-74	-18	-424	-525
Destination	3		-226	-9	238	6
	49		-301	72	-36	-216
US Rail / Short Line						
Origin						
Enroute				-5		-5
Destination	1			2	-27	-24
	1			-3	-27	-29

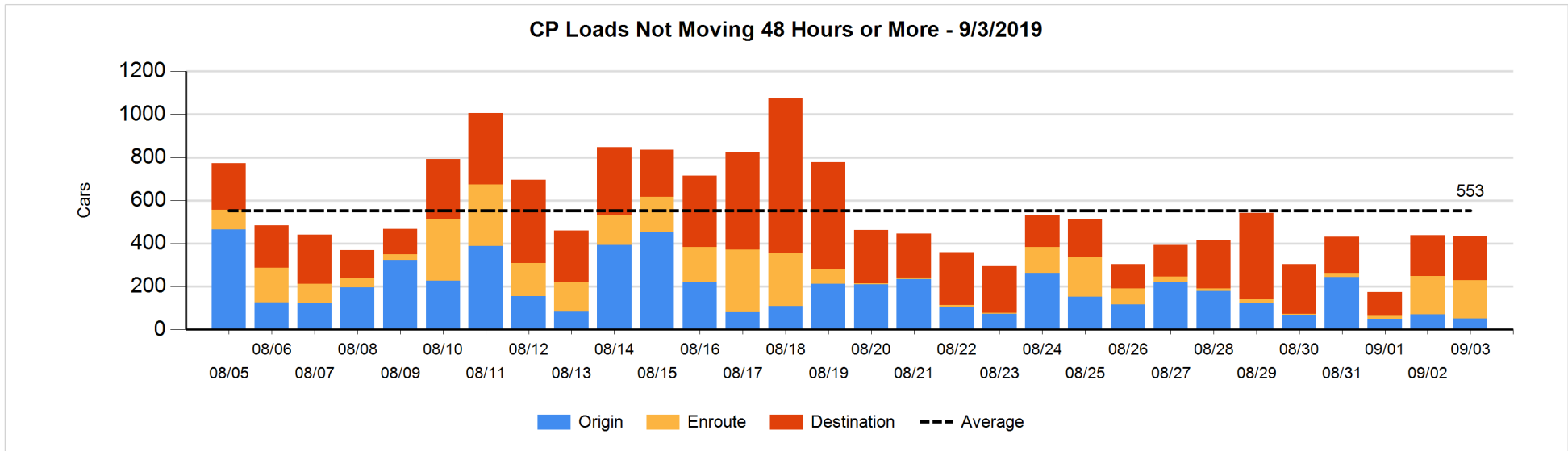
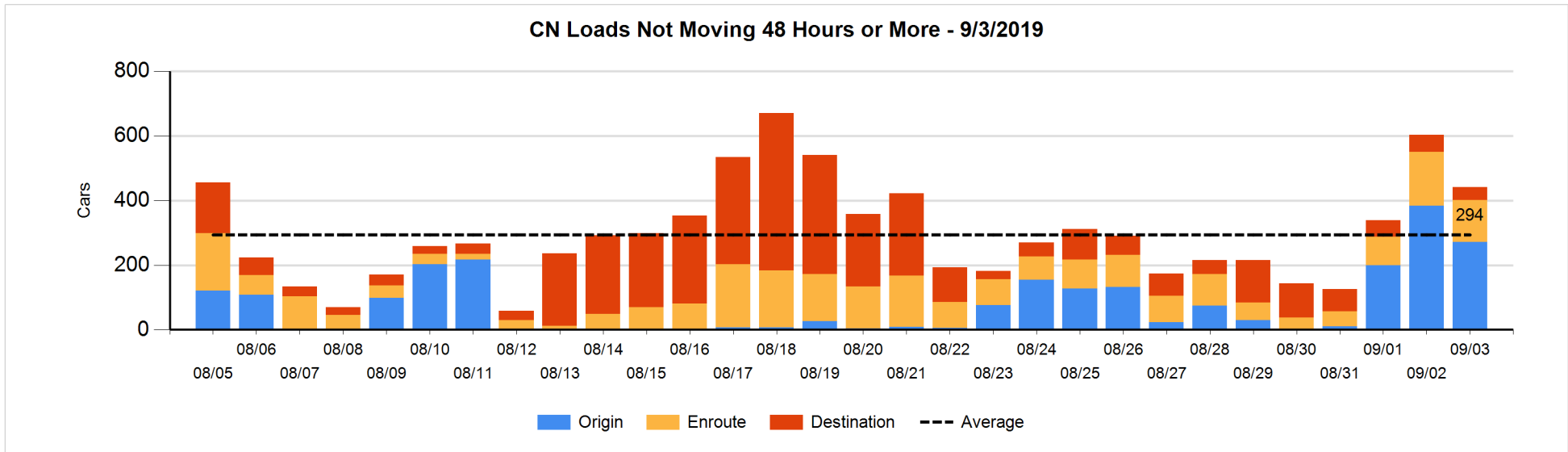


**Loads Not Moving 48 Hours or More - 9/3/2019**

	E Canada	Prince Rupert	Thunder Bay	USA/MEX	Vancouver	Total
<b>CN</b>						
Origin	12	69			191	272
Enroute	76	10		39	5	130
Destination	3	1	10	8	18	40
	91	80	10	47	214	442
<b>CP</b>						
Origin	7			1	44	52
Enroute	31		2		144	177
Destination			67	14	123	204
	38		69	15	311	433
<b>US Rail / Short Line</b>						
Origin						
Enroute				10		10
Destination				16	7	23
				26	7	33

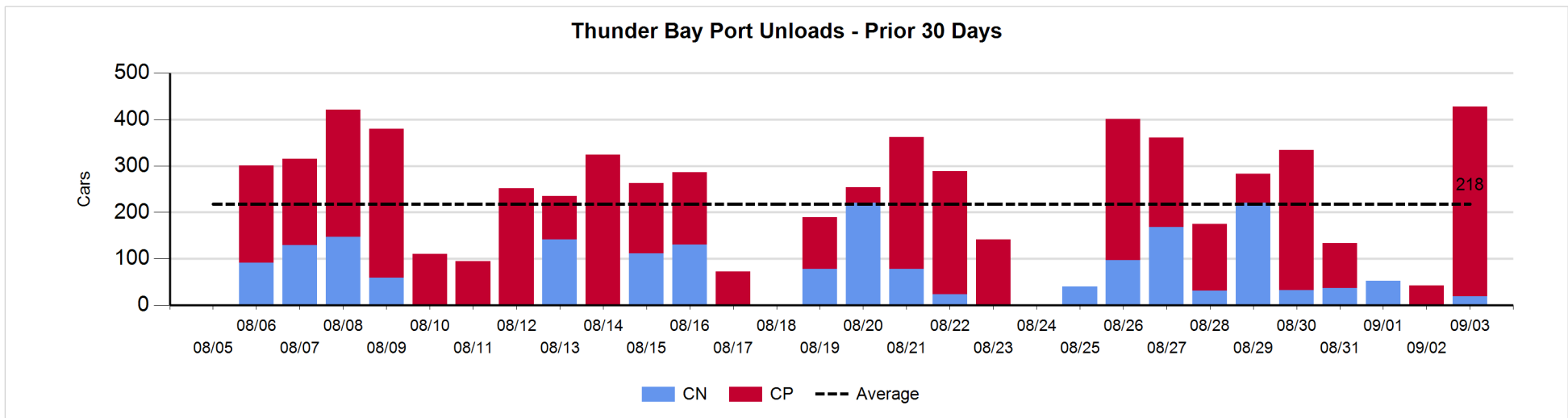
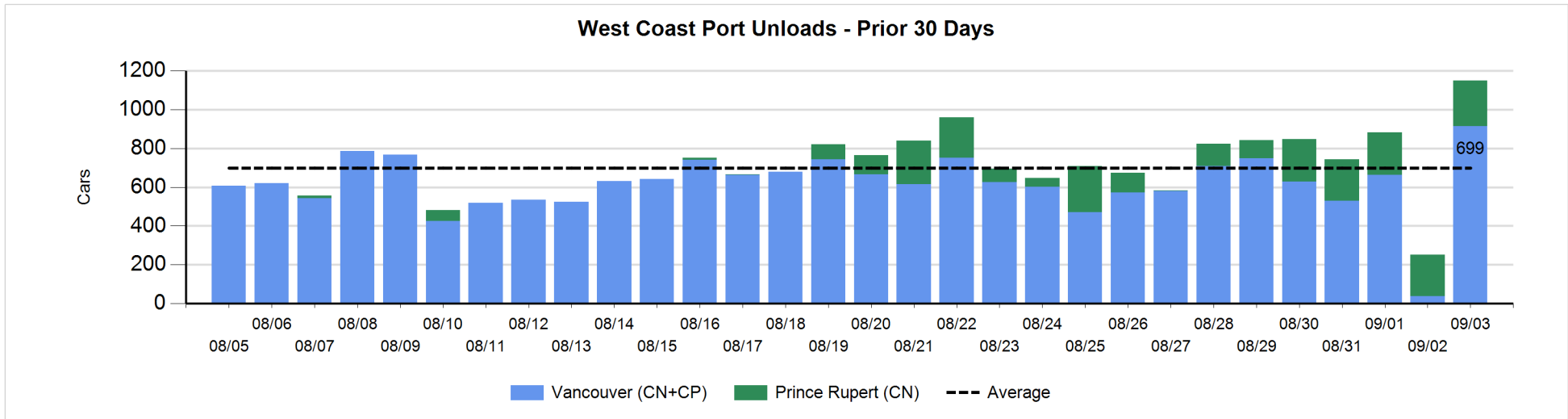
**Change in Loads Not Moving 48 Hours or More - 9/3/2019**

	E Canada	Prince Rupert	Thunder Bay	USA/MEX	Vancouver	Total
<b>CN</b>						
Origin	-6	0			-106	-112
Enroute	-12	1		-7	-18	-36
Destination	0	0	-3	-4	-7	-14
	-18	1	-3	-11	-131	-162
<b>CP</b>						
Origin	0		-1	0	-18	-19
Enroute	-81		2	-14	92	-1
Destination	-1		-8	-5	29	15
	-82		-7	-19	103	-5
<b>US Rail / Short Line</b>						
Origin						
Enroute				0		0
Destination				1	-10	-9
				1	-10	-9



**Port Unloads - 9/3/2019**

	Prince Rupert	Vancouver	West Coast Total	Thunder Bay	Total
CN	235	392	627	19	646
CP		522	522	409	931
	235	914	1,149	428	1,577





**Port Terminal Status**

**Vancouver**

Daily Activity for 9/3/2019

	Cars Arrived	Cars Received in Interchange	Cars Delivered in Interchange	Cars Placed for Unloading	Loads on Wheels at Destination As of 9/3/2019
CN	300	251	224	381	310
CP	696	224	254	441	944
SRY		3		6	41

**Port Unloads**

	09/03	09/02	Week To Date	Last Week
CN	392	13	405	1,890
CP	522	24	546	2,542
SRY	6	12	18	63

**Age Profile of Loaded Cars Waiting Placement for Unloading**

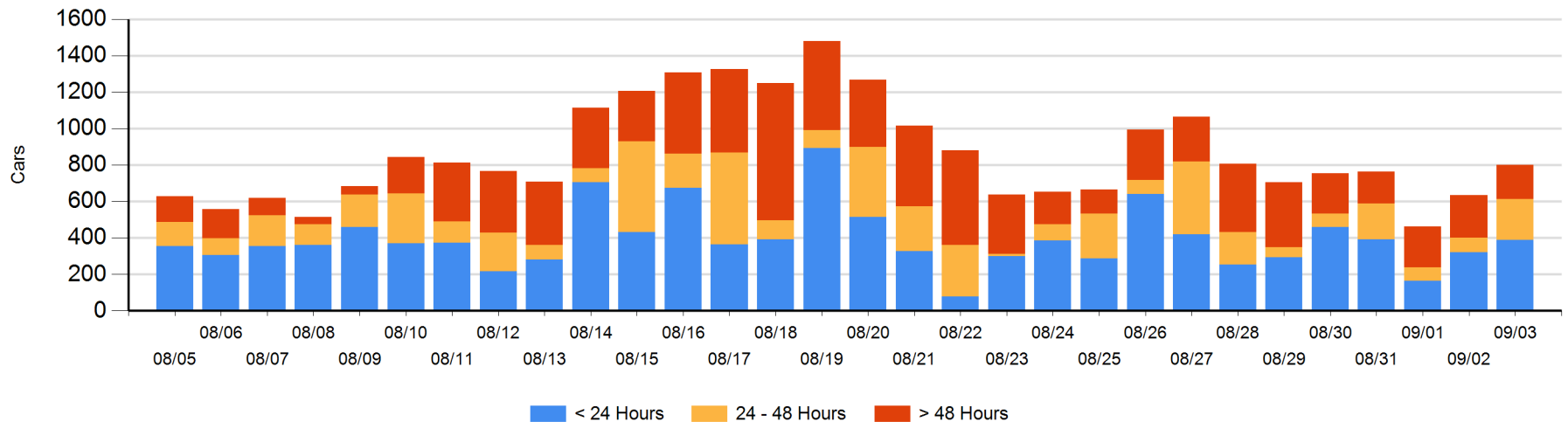
**Today**

	< 24 Hrs	24 - 48 Hrs	> 48-72 Hrs	> 72 Hrs	Total On Hand
CN	99	121		83	303
CP	291	102	60	33	486
SRY				11	11

**Change in Last 24 Hours**

	< 24 Hrs	24-48 Hrs	48 - 72 Hrs	> 72 Hrs
CN	-61	120	-50	22
CP	130	22	48	-65
SRY				-2

**Loaded Cars on Hand Vancouver Waiting for Placement - Last 30 Days All Railways**



**Port Terminal Status**

**Prince Rupert**

Daily Activity for 9/3/2019

	Cars Arrived	Cars Received in Interchange	Cars Delivered in Interchange	Cars Placed for Unloading	Loads on Wheels at Destination As of 9/3/2019
CN	106			106	55

**Port Unloads**

	09/03	09/02	Week To Date	Last Week
CN	235	215	450	964

**Age Profile of Loaded Cars Waiting Placement for Unloading**

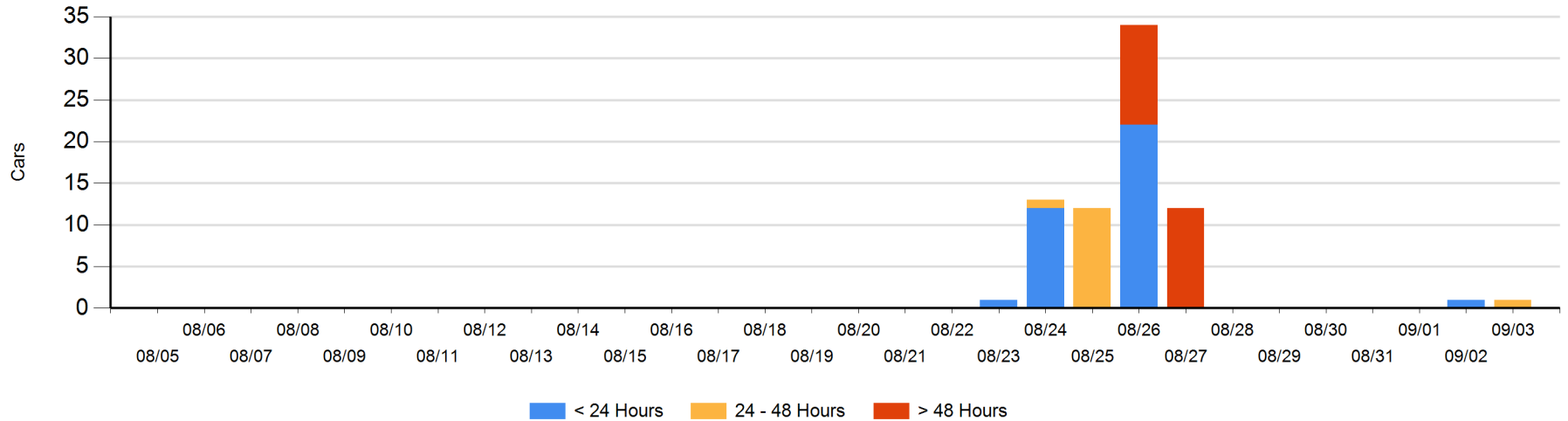
**Today**

	< 24 Hrs	24 - 48 Hrs	> 48-72 Hrs	> 72 Hrs	Total On Hand
CN		1			1

**Change in Last 24 Hours**

	< 24 Hrs	24-48 Hrs	48 - 72 Hrs	> 72 Hrs
CN	-1	1		

Loaded Cars on Hand Prince Rupert Waiting for Placement - Last 30 Days All Railways



**Port Terminal Status**

**Thunder Bay**

Daily Activity for 9/3/2019

	Cars Arrived	Cars Received in Interchange	Cars Delivered in Interchange	Cars Placed for Unloading	Loads on Wheels at Destination As of 9/3/2019
CN				224	364
CP	187			100	556

**Port Unloads**

	09/03	09/02	Week To Date	Last Week
CN	19		19	639
CP	409	42	451	1,102

**Age Profile of Loaded Cars Waiting Placement for Unloading**

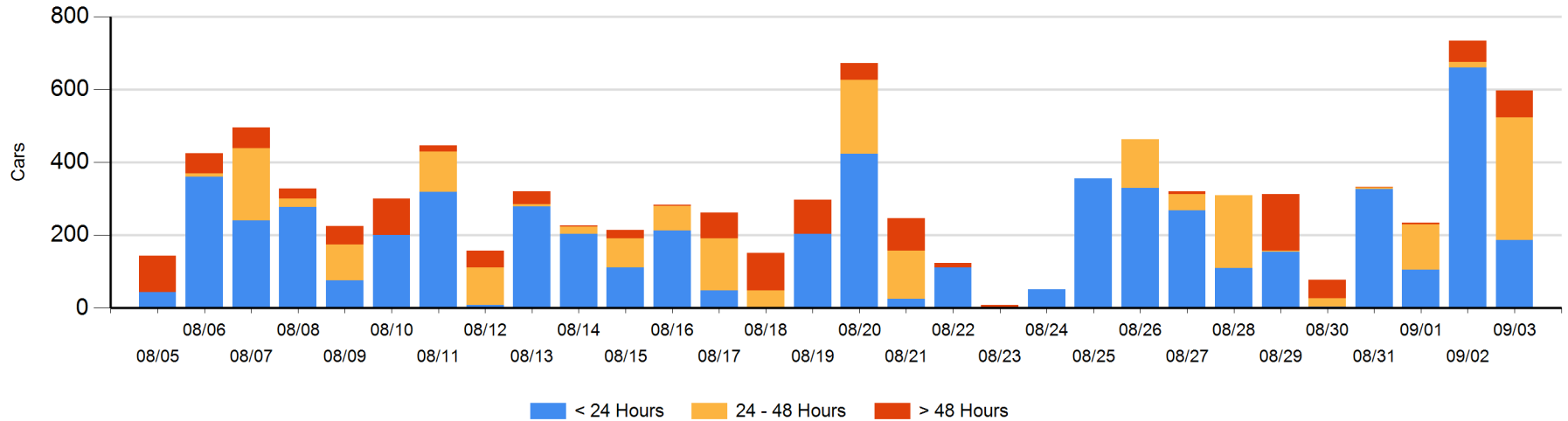
**Today**

	< 24 Hrs	24 - 48 Hrs	> 48-72 Hrs	> 72 Hrs	Total On Hand
CN		66		2	68
CP	187	270	15	57	529

**Change in Last 24 Hours**

	< 24 Hrs	24-48 Hrs	48 - 72 Hrs	> 72 Hrs
CN	-290	66		0
CP	-183	255	-39	54

**Loaded Cars on Hand Thunder Bay Waiting for Placement - Last 30 Days All Railways**



## Measurement Definitions

Loads on Wheels	<p>Count of loaded rail cars including all rail cars that have been released loaded at origin and have not been reported by the railway as unloaded at destination.</p> <p>Counts include all rail cars (hopper cars and boxcars) moving within a pipeline.</p>
Loads Not Moving	<p>Loaded rail cars for which the railways have not reported a movement event for 48 hours or more whether the rail car is at origin, enroute or at destination.</p>
Port Unloads	<p>Count of rail cars reported by railways as unloaded at the western port destinations of Vancouver, Prince Rupert and Thunder Bay.</p> <p>Unload counts include all rail cars (hopper cars and boxcars) unloaded by all receivers including major port terminals, transloaders and other receivers.</p>
Cars Arrived	<p>Count of rail cars reported as arrived at the destination railway terminal.</p>
Cars Received in Interchange	<p>Count of rail cars received in interchange by each railway within a destination railway terminal. Interchange activity is tracked for the Vancouver and Thunder Bay pipelines as applicable.</p>
Cars Delivered in Interchange	<p>Count of rail cars delivered in interchange by each railway within a destination railway terminal. Interchange activity is tracked for the Vancouver and Thunder Bay pipelines as applicable.</p>
Cars Placed for Unloading	<p>Count of rail cars reported by the railways as placed loaded at the receiver's facility for unloading.</p>
Loads on Wheels at Destination	<p>Count of rail cars that remain under load within the destination railway terminal including rail cars that have been reported as placed for unloading but not yet reported as unloaded.</p>
Waiting Placement for Unloading	<p>Count of rail cars that have been reported as arrived at the destination railway terminal but not reported as placed for unloading by the railway.</p> <p>For the Ports of Vancouver, Prince Rupert and Thunder Bay the count of rail cars waiting placement for unloading is categorized by age – i.e. the elapsed time from arrival at destination to the current report date.</p>