

**SPEED READ**

- Loads on wheels decreased overnight, marking a decline in CN traffic offset by higher CP volumes. On a net basis, volumes declined due to reduced volumes across all corridors other than Vancouver.
- Network fluidity improved overnight, led by a decline in idle car counts on CP by 32% (-154) offset by an increase in idle car counts on CN by 48% (+89). The total count of cars for 4+ days on both railways remained unchanged (-1) overnight - now at 246 cars.
- Four days in Week 5 unloads now ahead of prior week's performance by more than 100 unloads, marking improved week over week performance at Prince Rupert and Thunder Bay offset by lower unloads at Vancouver.

=====

**Loads on Wheels**

- Loads on wheels decreased 3% (-176) overnight and have now decreased for the third consecutive day, due to lower volumes on CN offset by higher traffic on CP - combined total at 6,022, the lowest seen in the last 30 days, and 13% below the trailing 30-day average.
- On a net basis, the decline in loads on wheels reflects reduced volumes across all corridors other than Vancouver.
- CN volumes declined 10% (-310) overnight, with reduced traffic across all corridors. System wide CN loads on wheels now at 2,718, the lowest seen in the last 30 days, and 17% below the trailing 30-day average.
- CP volumes increased 3% (+97) overnight, driven by a rise in volumes in the Vancouver and E. Canada corridors offset by a decline in traffic in the Thunder Bay and USA/MEX corridors. CP system wide loads on wheels currently at 3,152 and 12% below the trailing 30-day average.
- Vancouver presently at 3,407, rose 3% (+101) overnight, now 19% below the trailing 30-day average.
- The Prince Rupert pipeline presently at 787, declined 19% (-182) overnight, and 2% above the trailing 30-day average.
- Thunder Bay volumes declined 7% (-72) overnight and have now decreased for the third consecutive day - currently at 960 and 18% below the trailing 30-day average, with 71% of traffic moving on CP.

**Hopper Car Rationing**

- No hopper cars were rationed by either CN or CP in week 4.

**Loads Not Moving**

- **The count of cars not moving for 48+ hours declined for the third consecutive day, down 10% (-65) overnight, marking reduced counts on CP offset by higher counts on CN. Idle car counts now at 608 and 26% below the trailing 30-day average.**
- CN
  - **The count of idle cars for 48+ hours increased 48% (+89) overnight - currently at 275 cars.**
  - The number of cars idle for 4+ days up 8% (+11) overnight - now at 149 cars.
  - The count of cars not moving for 7+ days increased 35% (+11) overnight - currently at 42 cars.
  - Vancouver represents 17% of all idle cars.
  - In total 48% of all idle cars are dwelling at origin locations.
- CP
  - **CP idle car counts for 48+ hours decreased 32% (-154) overnight - presently at 333 cars.**
  - The number of cars idle for 4+ days decreased 11% (-12) overnight - now at 97 cars.
  - The number of cars idle for 7+ days increased significantly by 60% (+3) overnight - currently at 08 cars.

- Vancouver accounts for 36% of all idle cars.
- In total 23% of all idle cars are dwelling at origin locations.

### **Port Performance**

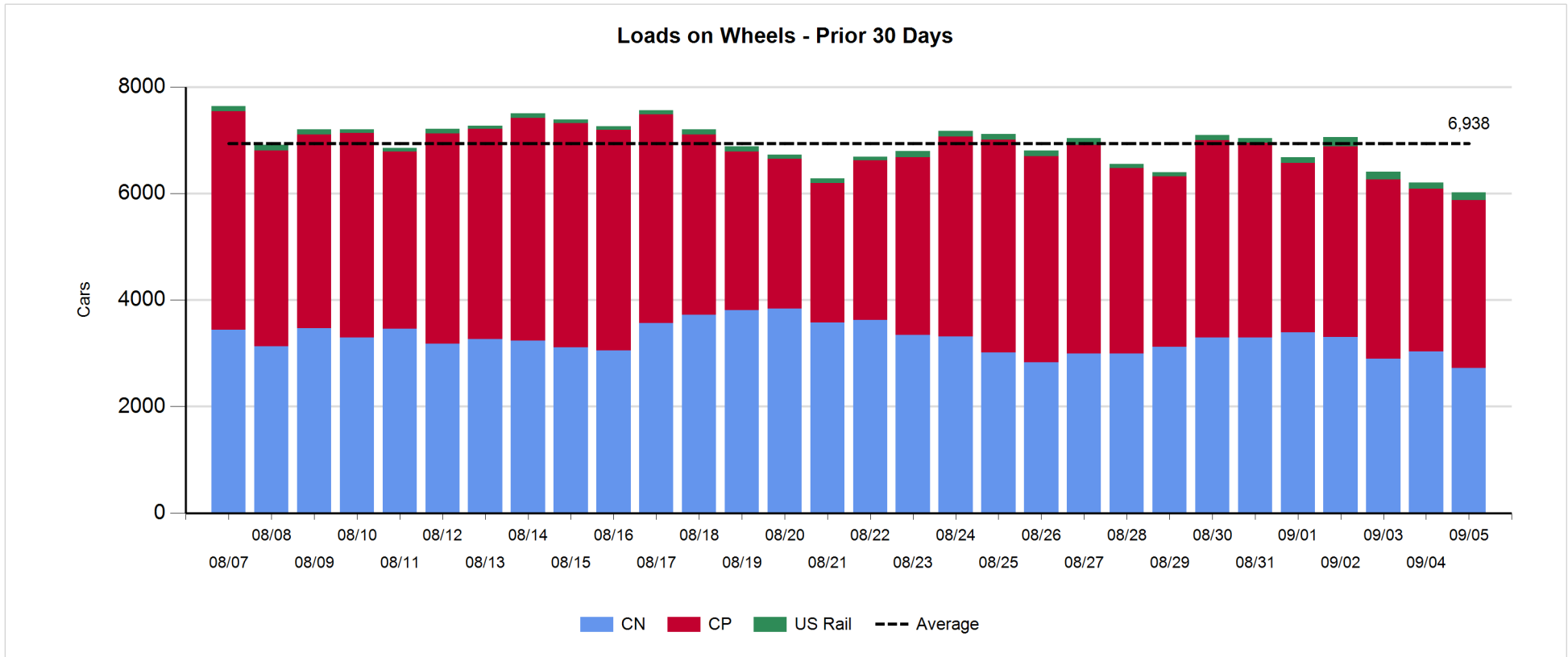
- CN and CP reported a total of 1,341 cars unloaded at the three major ports, now 42% above the trailing 30-day average. Four days in Week 5 unloads now ahead of last week's pace by more than 100 unloads, marking higher unloads at Prince Rupert and Thunder Bay offset by lower unloads at Vancouver.
- Vancouver
  - 676 unloads reported by CN and CP at the Port of Vancouver; CN - 162 and CP - 514. Four days in Week 5 unloads are tracking behind last week's performance by more than 300 unloads.
  - There are 650 cars on site at Vancouver with 600 cars arriving at the port in the last 24 hours.
  - CN and CP have 500 cars in British Columbia en route to Vancouver, with less than 100 cars at Kamloops and west, and 84% of traffic moving on CP.
- Prince Rupert
  - Prince Rupert reported 227 unloads, now ahead of last week's unloads after four days by more than 350 unloads.
  - Loads on wheels now below 1,000 cars - now at 787 cars.
  - There are 350 cars west of Jasper en route to Prince Rupert.
  - There are 3 cars on site at Prince Rupert with 100 cars arriving at the port in the last 24 hours.
- Thunder Bay
  - 438 unloads, the highest seen in the last 30 days, were reported at Thunder Bay yesterday. Four days in Week 5 unloads are tracking ahead of last week's pace by 50 unloads.
  - There are about 350 cars on site at Thunder Bay with zero cars arriving at the port in the prior 24 hours.
  - There are more than 250 cars en route to Thunder Bay from Winnipeg and east.

**Daily Loads on Wheels - 9/5/2019**

	E Canada	Prince Rupert	Thunder Bay	USA/MEX	Vancouver	Total
CN	220	787	274	158	1,279	2,718
CP	233		686	124	2,109	3,152
Short Line	3				19	22
US Rail				130		130
	456	787	960	412	3,407	6,022

**Change in Loads on Wheels - Prior 24 Hours**

	E Canada	Prince Rupert	Thunder Bay	USA/MEX	Vancouver	Total
CN	-23	-182	-4	-50	-51	-310
CP	9		-68	-3	159	97
Short Line	-4				-7	-11
US Rail				48		48
	-18	-182	-72	-5	101	-176

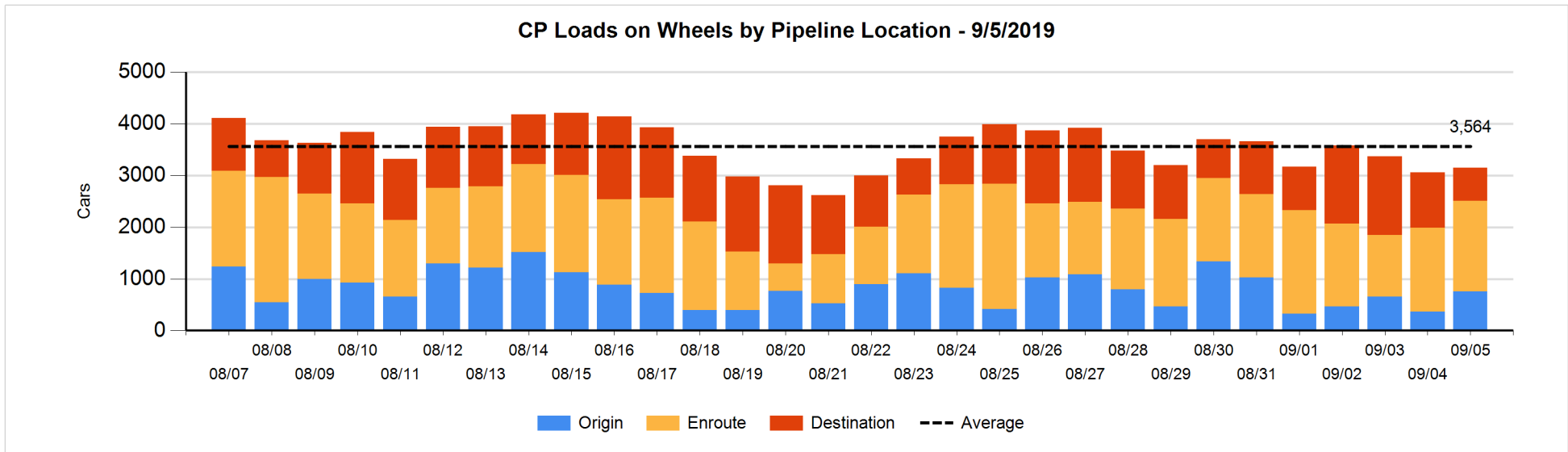
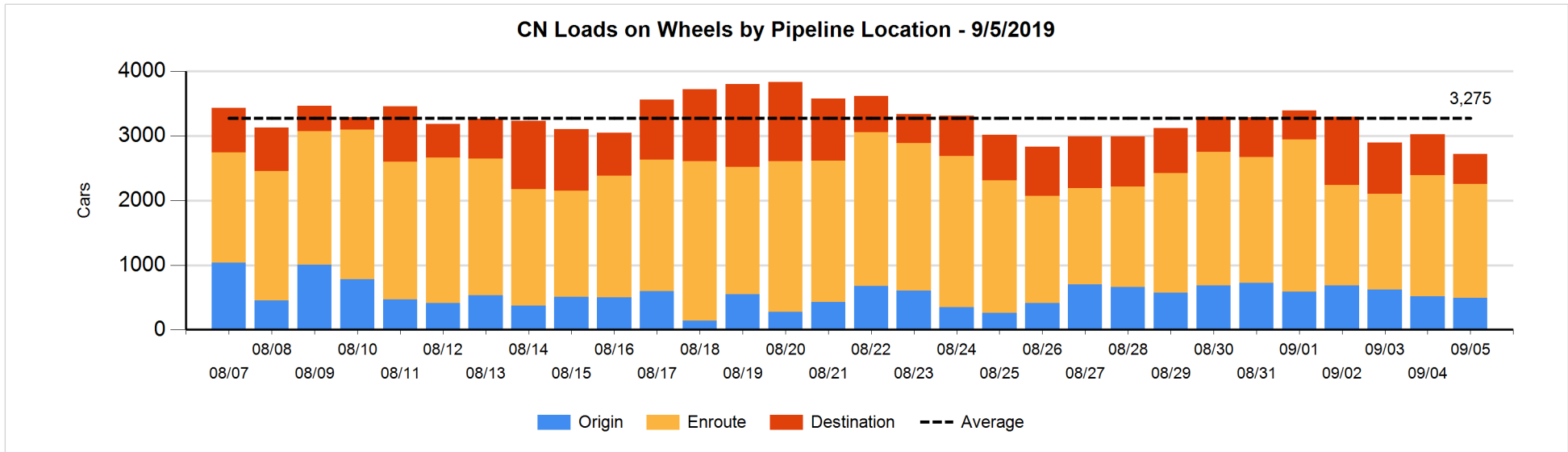


**Daily Loads on Wheels By Pipeline Location - 9/5/2019**

	E Canada	Prince Rupert	Thunder Bay	USA/MEX	Vancouver	Total
CN						
Origin	6	216	117	9	143	491
Enroute	174	568	50	129	847	1,768
Destination	40	3	107	20	289	459
	220	787	274	158	1,279	2,718
CP						
Origin	29		26	3	702	760
Enroute	157		436	105	1,055	1,753
Destination	47		224	16	352	639
	233		686	124	2,109	3,152
US Rail / Short Line						
Origin						
Enroute				55		55
Destination	3			75	19	97
	3			130	19	152

**Change in Daily Loads on Wheels By Pipeline Location - Prior 24 Hours**

	E Canada	Prince Rupert	Thunder Bay	USA/MEX	Vancouver	Total
CN						
Origin	-10	44	117	4	-180	-25
Enroute	-27	-92	0	-43	57	-105
Destination	14	-134	-121	-11	72	-180
	-23	-182	-4	-50	-51	-310
CP						
Origin	-28		26	0	396	394
Enroute	-10		223	0	-86	127
Destination	47		-317	-3	-151	-424
	9		-68	-3	159	97
US Rail / Short Line						
Origin						
Enroute				1		1
Destination	-4			47	-7	36
	-4			48	-7	37

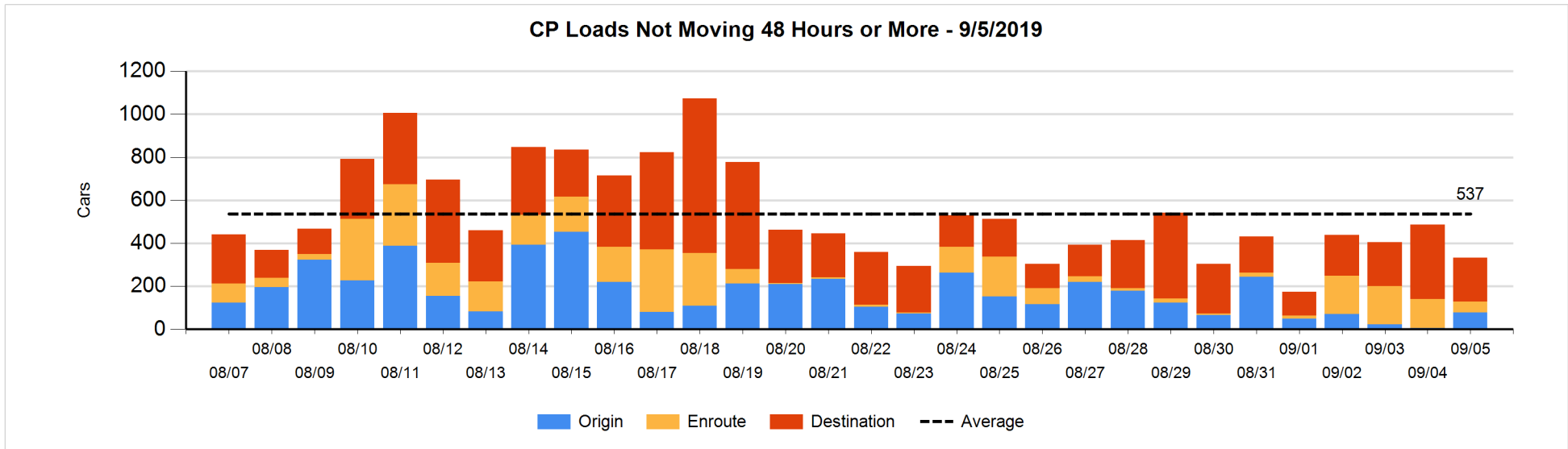
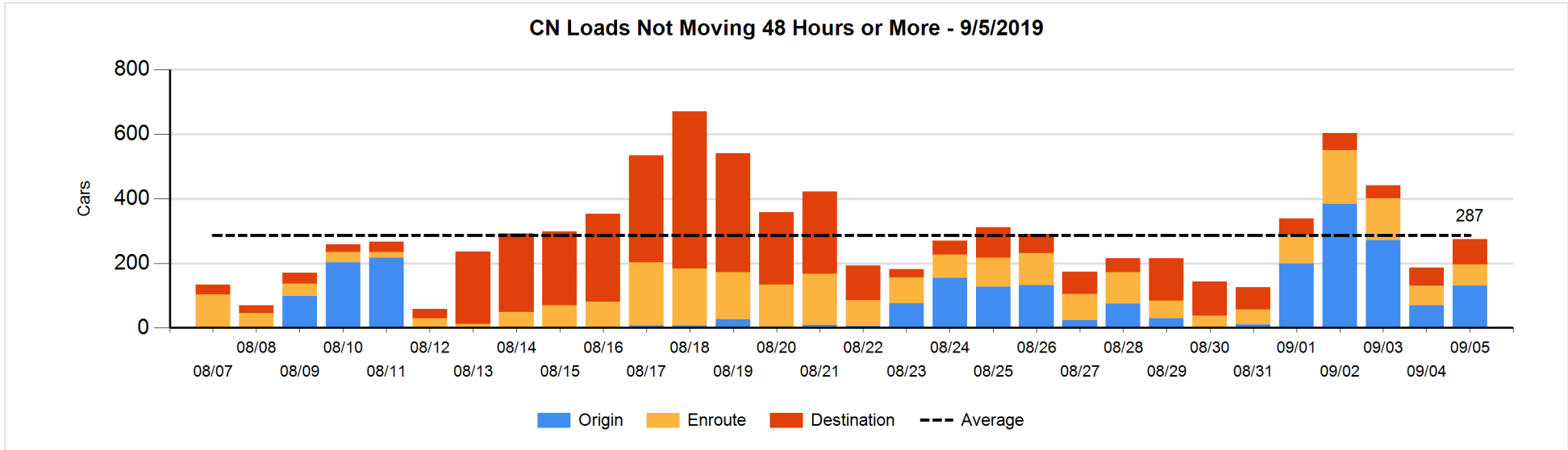


**Loads Not Moving 48 Hours or More - 9/5/2019**

	E Canada	Prince Rupert	Thunder Bay	USA/MEX	Vancouver	Total
<b>CN</b>						
Origin	6	119			6	131
Enroute	41	11		7	6	65
Destination	4	1	31	8	35	79
	51	131	31	15	47	275
<b>CP</b>						
Origin	26			3	48	77
Enroute			1	7	43	51
Destination			161	16	28	205
	26		162	26	119	333
<b>US Rail / Short Line</b>						
Origin						
Enroute				12		12
Destination	1			19	16	36
	1			31	16	48

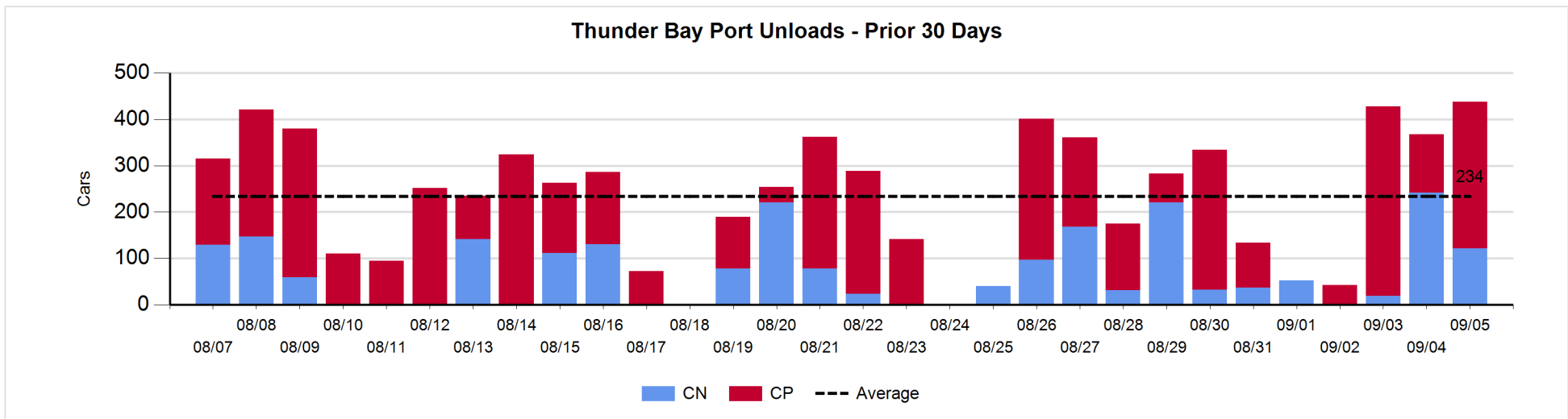
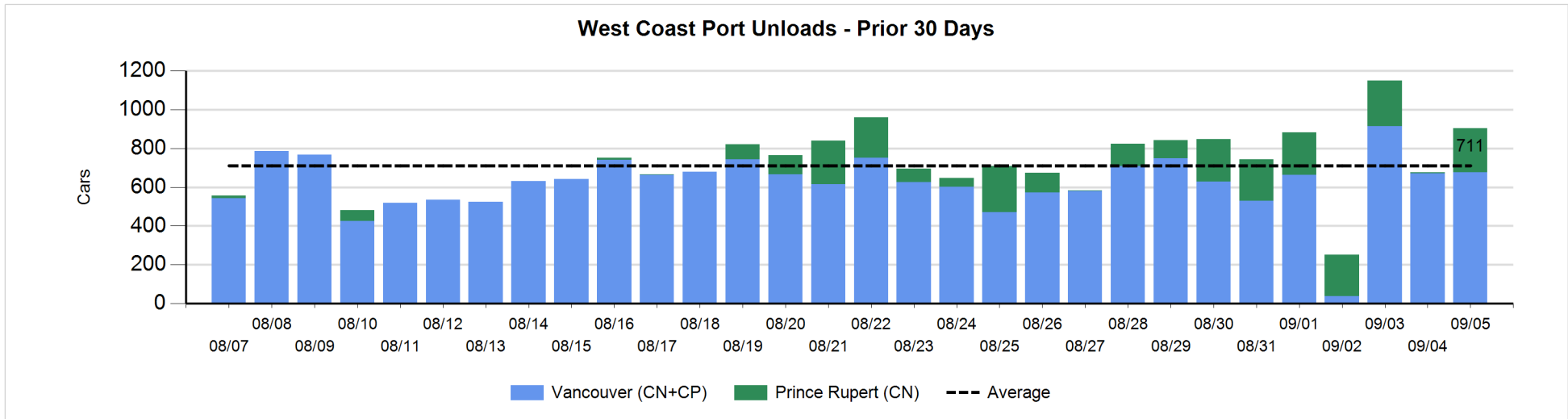
**Change in Loads Not Moving 48 Hours or More - 9/5/2019**

	E Canada	Prince Rupert	Thunder Bay	USA/MEX	Vancouver	Total
<b>CN</b>						
Origin	6	50			6	62
Enroute	1	2		0	0	3
Destination	1	-1	5	-4	23	24
	8	51	5	-4	29	89
<b>CP</b>						
Origin	25			2	45	72
Enroute			0	7	-91	-84
Destination			-80	2	-64	-142
	25		-80	11	-110	-154
<b>US Rail / Short Line</b>						
Origin						
Enroute				-1		-1
Destination	1			5	-4	2
	1			4	-4	1



**Port Unloads - 9/5/2019**

	Prince Rupert	Vancouver	West Coast Total	Thunder Bay	Total
CN	227	162	389	121	510
CP		514	514	317	831
	227	676	903	438	1,341





**Port Terminal Status**

**Vancouver**

Daily Activity for 9/5/2019

	Cars Arrived	Cars Received in Interchange	Cars Delivered in Interchange	Cars Placed for Unloading	Loads on Wheels at Destination As of 9/5/2019
CN	259	3	30	131	289
CP	341	28	3	433	352
SRY		2		7	19

**Port Unloads**

	09/05	09/04	Week To Date	Last Week
CN	162	150	717	1,890
CP	514	521	1,581	2,542
SRY	10	18	46	63

**Age Profile of Loaded Cars Waiting Placement for Unloading**

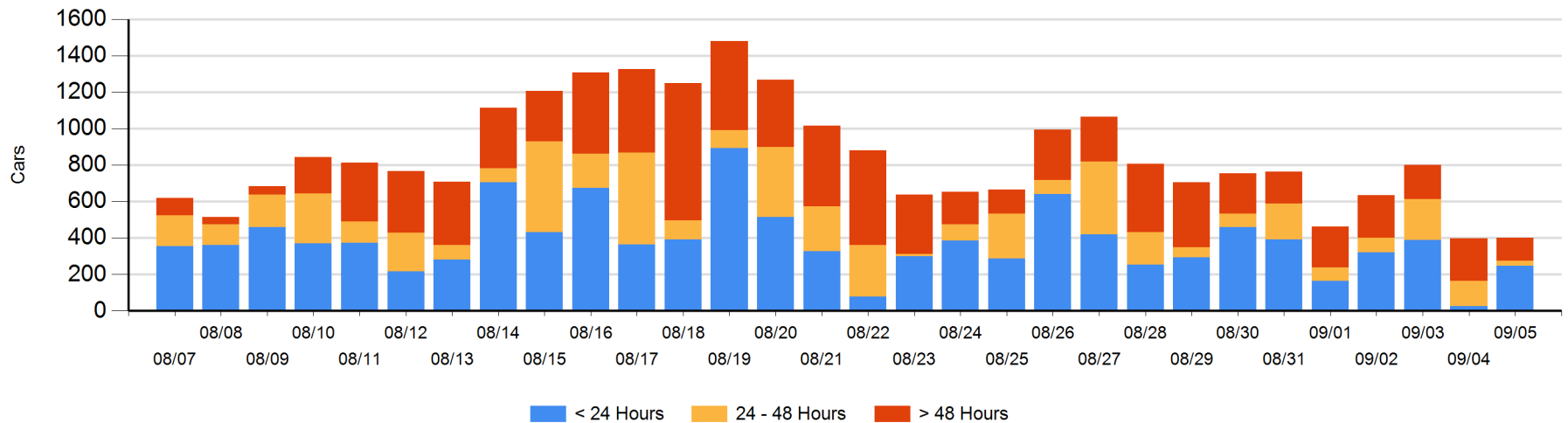
**Today**

	< 24 Hrs	24 - 48 Hrs	> 48-72 Hrs	> 72 Hrs	Total On Hand
CN	159	10	22	39	230
CP	88	17	18	46	169
SRY				3	3

**Change in Last 24 Hours**

	< 24 Hrs	24-48 Hrs	48 - 72 Hrs	> 72 Hrs
CN	149	-12	-93	12
CP	71	-98	-15	-8
SRY				-1

**Loaded Cars on Hand Vancouver Waiting for Placement - Last 30 Days All Railways**



**Port Terminal Status**

**Prince Rupert**

Daily Activity for 9/5/2019

	Cars Arrived	Cars Received in Interchange	Cars Delivered in Interchange	Cars Placed for Unloading	Loads on Wheels at Destination As of 9/5/2019
CN	96			96	3

**Port Unloads**

	09/05	09/04	Week To Date	Last Week
CN	227	5	682	964

**Age Profile of Loaded Cars Waiting Placement for Unloading**

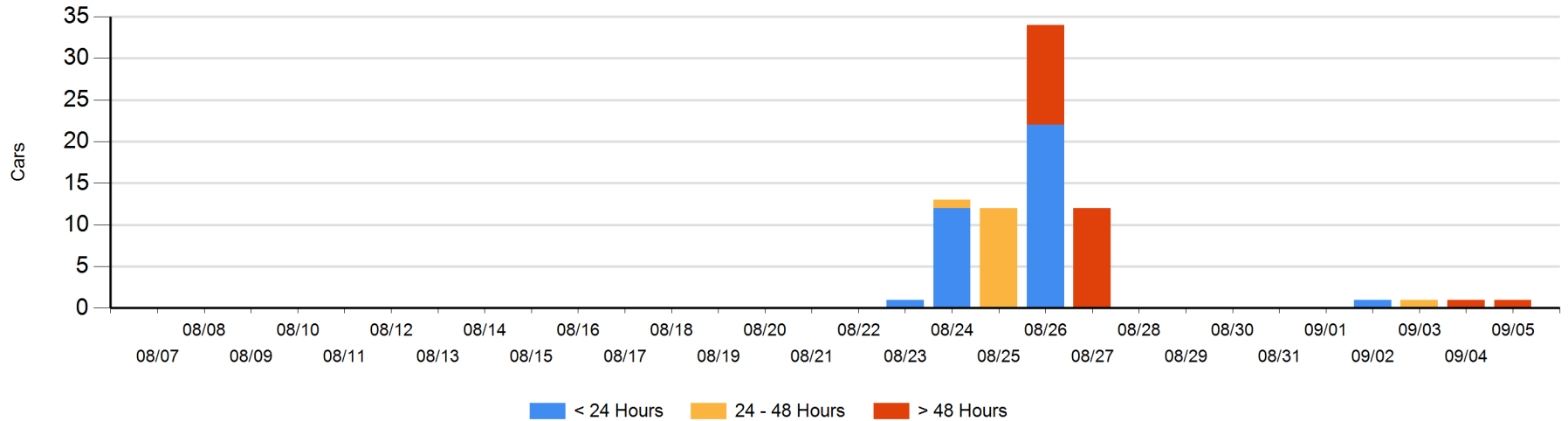
**Today**

	< 24 Hrs	24 - 48 Hrs	> 48-72 Hrs	> 72 Hrs	Total On Hand
CN				1	1

**Change in Last 24 Hours**

	< 24 Hrs	24-48 Hrs	48 - 72 Hrs	> 72 Hrs
CN			-1	1

Loaded Cars on Hand Prince Rupert Waiting for Placement - Last 30 Days All Railways



**Port Terminal Status**

**Thunder Bay**

Daily Activity for 9/5/2019

	Cars Arrived	Cars Received in Interchange	Cars Delivered in Interchange	Cars Placed for Unloading	Loads on Wheels at Destination As of 9/5/2019
CN				119	107
CP				307	224

**Port Unloads**

	09/05	09/04	Week To Date	Last Week
CN	121	242	382	639
CP	317	126	894	1,102

**Age Profile of Loaded Cars Waiting Placement for Unloading**

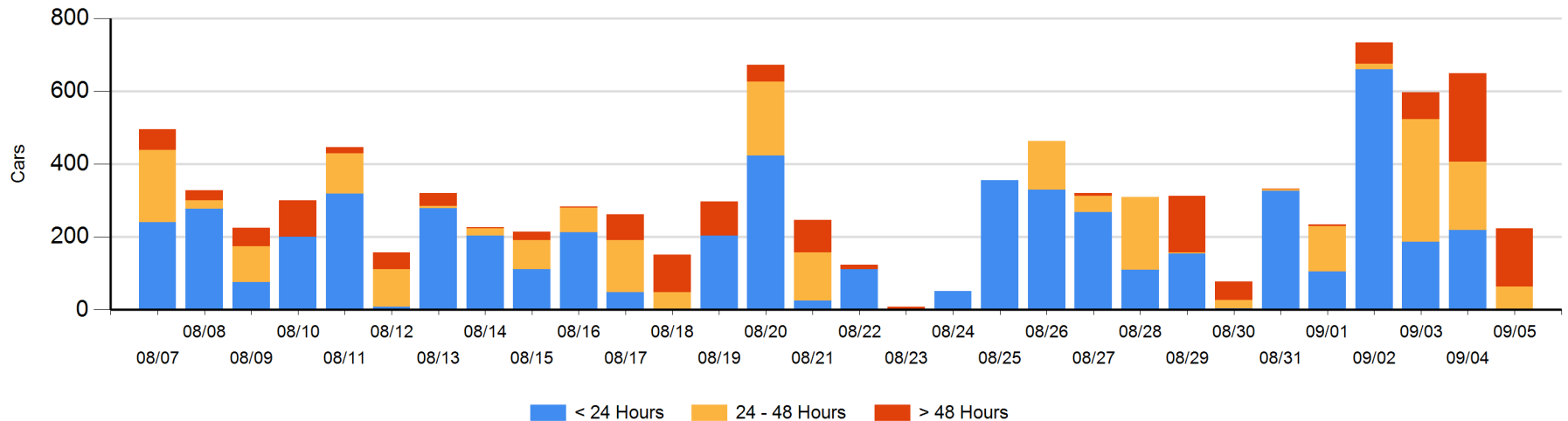
**Today**

	< 24 Hrs	24 - 48 Hrs	> 48-72 Hrs	> 72 Hrs	Total On Hand
CN					0
CP		63	118	43	224

**Change in Last 24 Hours**

	< 24 Hrs	24-48 Hrs	48 - 72 Hrs	> 72 Hrs
CN	-106		-11	-2
CP	-113	-124	-87	17

**Loaded Cars on Hand Thunder Bay Waiting for Placement - Last 30 Days All Railways**



## Measurement Definitions

Loads on Wheels	<p>Count of loaded rail cars including all rail cars that have been released loaded at origin and have not been reported by the railway as unloaded at destination.</p> <p>Counts include all rail cars (hopper cars and boxcars) moving within a pipeline.</p>
Loads Not Moving	<p>Loaded rail cars for which the railways have not reported a movement event for 48 hours or more whether the rail car is at origin, enroute or at destination.</p>
Port Unloads	<p>Count of rail cars reported by railways as unloaded at the western port destinations of Vancouver, Prince Rupert and Thunder Bay.</p> <p>Unload counts include all rail cars (hopper cars and boxcars) unloaded by all receivers including major port terminals, transloaders and other receivers.</p>
Cars Arrived	<p>Count of rail cars reported as arrived at the destination railway terminal.</p>
Cars Received in Interchange	<p>Count of rail cars received in interchange by each railway within a destination railway terminal. Interchange activity is tracked for the Vancouver and Thunder Bay pipelines as applicable.</p>
Cars Delivered in Interchange	<p>Count of rail cars delivered in interchange by each railway within a destination railway terminal. Interchange activity is tracked for the Vancouver and Thunder Bay pipelines as applicable.</p>
Cars Placed for Unloading	<p>Count of rail cars reported by the railways as placed loaded at the receiver's facility for unloading.</p>
Loads on Wheels at Destination	<p>Count of rail cars that remain under load within the destination railway terminal including rail cars that have been reported as placed for unloading but not yet reported as unloaded.</p>
Waiting Placement for Unloading	<p>Count of rail cars that have been reported as arrived at the destination railway terminal but not reported as placed for unloading by the railway.</p> <p>For the Ports of Vancouver, Prince Rupert and Thunder Bay the count of rail cars waiting placement for unloading is categorized by age – i.e. the elapsed time from arrival at destination to the current report date.</p>