

SPEED READ

- Loads on wheels increased slightly overnight, marking higher CP volumes offset by a decline in CN volumes. On a net basis, volumes gained due to higher traffic in the Vancouver and USA/MEX corridors offset by reduced volumes in the Prince Rupert, Thunder Bay and E. Canada corridors.
- Network fluidity deteriorated overnight, led by a rise in idle car counts on both CN and CP by 30% (+62) and 53% (+128), respectively. The total count of cars for 4+ days on both railways fell 14% (-25) overnight - now at 159 cars.
- Week 5 unloads ended behind prior week's performance by 400 unloads, reflecting lower unloads at Vancouver offset by improved week over week performance at Thunder Bay and Prince Rupert.

=====

Loads on Wheels

- Loads on wheels increased for the third consecutive day, up (+19) overnight, due to higher volumes on CP offset by reduced traffic on CN - combined total at 6,521 and 5% below the trailing 30-day average.
- On a net basis, the rise in loads on wheels reflects higher traffic in the Vancouver and USA/MEX corridors offset by reduced volumes in the Prince Rupert, Thunder Bay and E. Canada corridors.
- CN volumes fell 8% (-273) overnight, with reduced volumes across all corridors. System wide CN loads on wheels now at 2,953 and 9% below the trailing 30-day average.
- CP volumes increased 9% (+285) overnight, driven by a rise in traffic in the Vancouver and USA/MEX corridors offset by a decline in volumes in the Thunder Bay and E. Canada corridors. CP system wide loads on wheels currently at 3,447 and 2% below the trailing 30-day average.
- Vancouver currently at 3,629, gained 4% (+153) overnight, now 12% below the trailing 30-day average.
- The Prince Rupert pipeline now at 890, declining 15% (-153) overnight, and 7% above the trailing 30-day average.
- Thunder Bay volumes fell 5% (-48) overnight - currently at 908 and 18% below the trailing 30-day average, with 59% of traffic moving on CP.

Hopper Car Rationing

- No hopper cars were rationed by either CN or CP in week 4.

Loads Not Moving

- **The count of cars not moving for 48+ hours gained 42% (+190) overnight, marking higher counts on both CN and CP. Idle car counts now at 639 and 22% below the trailing 30-day average.**
- CN
 - **The count of idle cars for 48+ hours increased 30% (+62) overnight - now at 271 cars.**
 - The number of cars idle for 4+ days fell 21% (-30) overnight - now at 114 cars.
 - The count of cars not moving for 7+ days fell 9% (-10) overnight - now at 99 cars.
 - Vancouver represents 13% of all idle cars.
 - In total 33% of all idle cars are dwelling at origin locations.
- CP
 - **CP idle car counts for 48+ hours increased significantly by 53% (+128) overnight - now at 368 cars.**
 - The number of cars idle for 4+ days increased 13% (+5) overnight - currently at 45 cars.
 - The number of cars idle for 7+ days increased for the fifth consecutive day, up 8% (+2) overnight - now at 28 cars.

- Vancouver accounts for 29% of all idle cars.
- In total 7% of all idle cars are dwelling at origin locations.

Port Performance

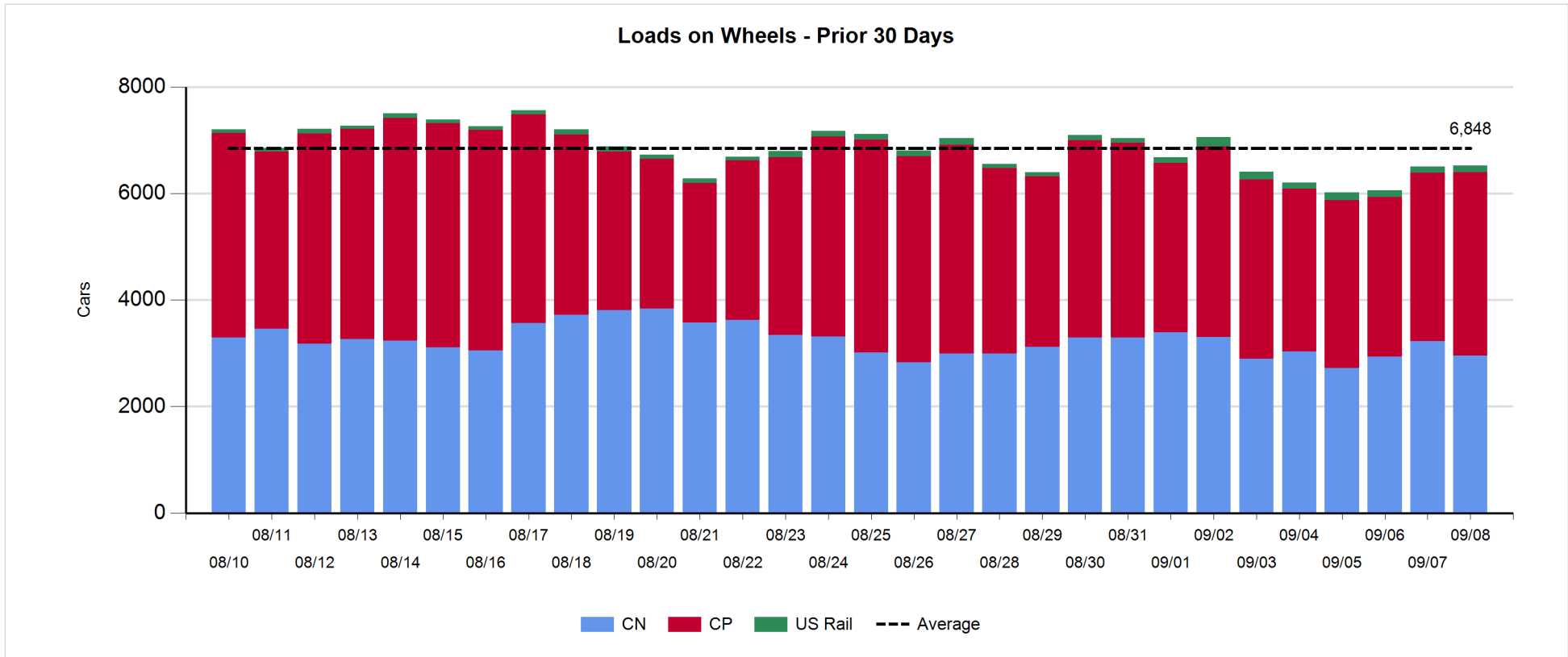
- CN and CP reported a total of 768 cars unloaded at the three major ports, now 17% below the trailing 30-day average. Week 5 unloads ended behind last week's pace by 400 unloads, reflecting lower unloads at Vancouver offset by higher unloads at Thunder Bay and Prince Rupert.
- Vancouver
 - 516 unloads reported by CN and CP at the Port of Vancouver; CN - 154 and CP - 362. Week 5 unloads ended behind last week's performance by more than 550 unloads.
 - There are about 850 cars on site at Vancouver with more than 650 cars arriving at the port in the last 24 hours.
 - CN and CP have more than 850 cars in British Columbia en route to Vancouver, with more than 550 cars at Kamloops and west, and 56% of traffic moving on CP.
- Prince Rupert
 - Prince Rupert reported 155 unloads, finished ahead of last week's unloads by more than 50 unloads.
 - Loads on wheels now below 1,000 cars - currently at 890 cars.
 - There are more than 250 cars west of Jasper en route to Prince Rupert.
 - There are fewer than 50 cars on site at Prince Rupert with 150 cars arriving at the port in the last 24 hours.
- Thunder Bay
 - 97 unloads were reported at Thunder Bay yesterday. Week 5 unloads ended ahead of last week's pace by a little less than 100 unloads.
 - There are around 650 cars on site at Thunder Bay with about 400 cars arriving at the port in the prior 24 hours.
 - There are more than 200 cars en route to Thunder Bay from Winnipeg and east.

Daily Loads on Wheels - 9/8/2019

	E Canada	Prince Rupert	Thunder Bay	USA/MEX	Vancouver	Total
CN	199	890	375	188	1,301	2,953
CP	233		533	392	2,289	3,447
Short Line	7				39	46
US Rail				75		75
	439	890	908	655	3,629	6,521

Change in Loads on Wheels - Prior 24 Hours

	E Canada	Prince Rupert	Thunder Bay	USA/MEX	Vancouver	Total
CN	-16	-153	-1	-14	-89	-273
CP	-5		-47	100	237	285
Short Line	5				5	10
US Rail				-3		-3
	-16	-153	-48	83	153	19

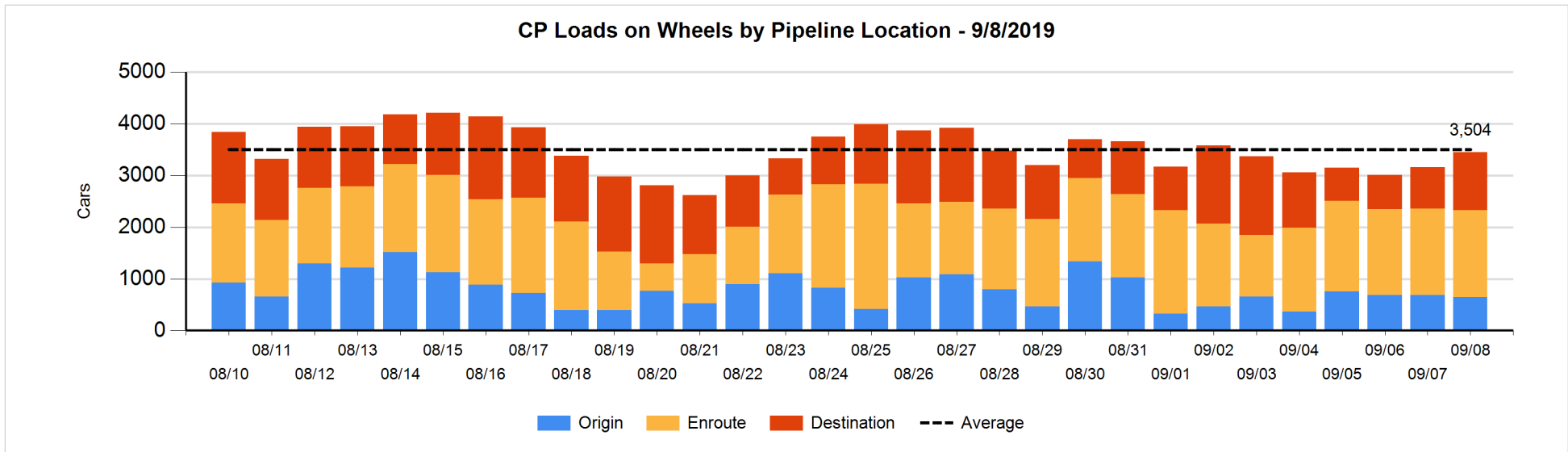
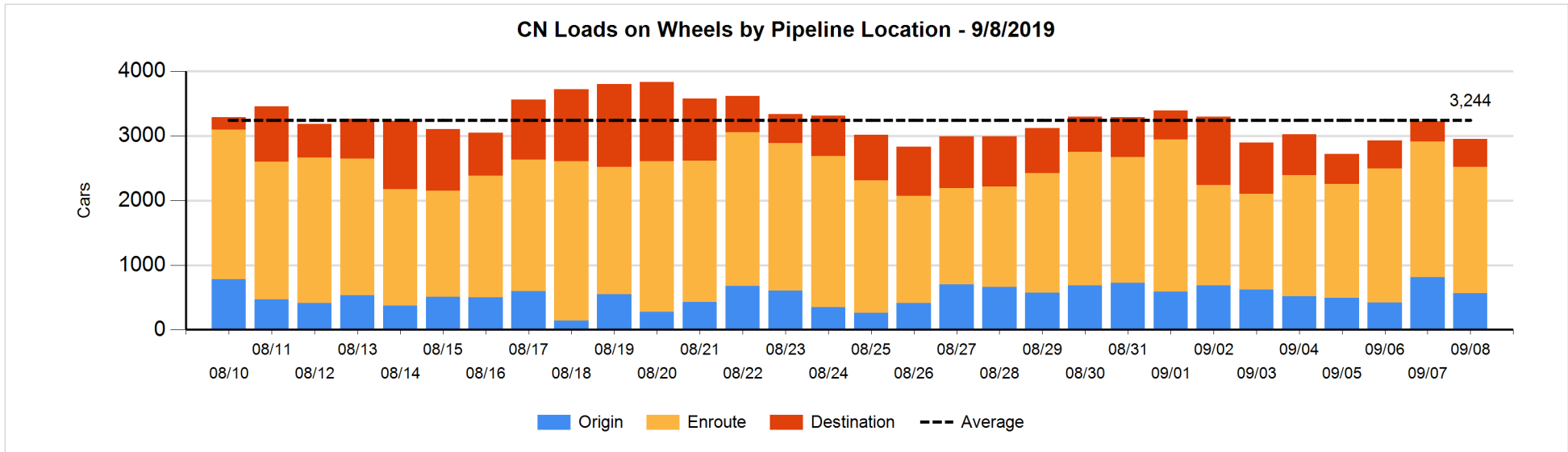


Daily Loads on Wheels By Pipeline Location - 9/8/2019

	E Canada	Prince Rupert	Thunder Bay	USA/MEX	Vancouver	Total
CN						
Origin		233		6	322	561
Enroute	174	627	136	136	887	1,960
Destination	25	30	239	46	92	432
	199	890	375	188	1,301	2,953
CP						
Origin	1		49	102	493	645
Enroute	232		88	274	1,088	1,682
Destination			396	16	708	1,120
	233		533	392	2,289	3,447
US Rail / Short Line						
Origin						
Enroute	5			29		34
Destination	2			46	39	87
	7			75	39	121

Change in Daily Loads on Wheels By Pipeline Location - Prior 24 Hours

	E Canada	Prince Rupert	Thunder Bay	USA/MEX	Vancouver	Total
CN						
Origin	-3	-192	-99	-1	42	-253
Enroute	-25	54	-118	-17	-36	-142
Destination	12	-15	216	4	-95	122
	-16	-153	-1	-14	-89	-273
CP						
Origin	-57		-5	0	23	-39
Enroute	52		-110	100	-31	11
Destination			68	0	245	313
	-5		-47	100	237	285
US Rail / Short Line						
Origin						
Enroute	5			-9		-4
Destination	0			6	5	11
	5			-3	5	7

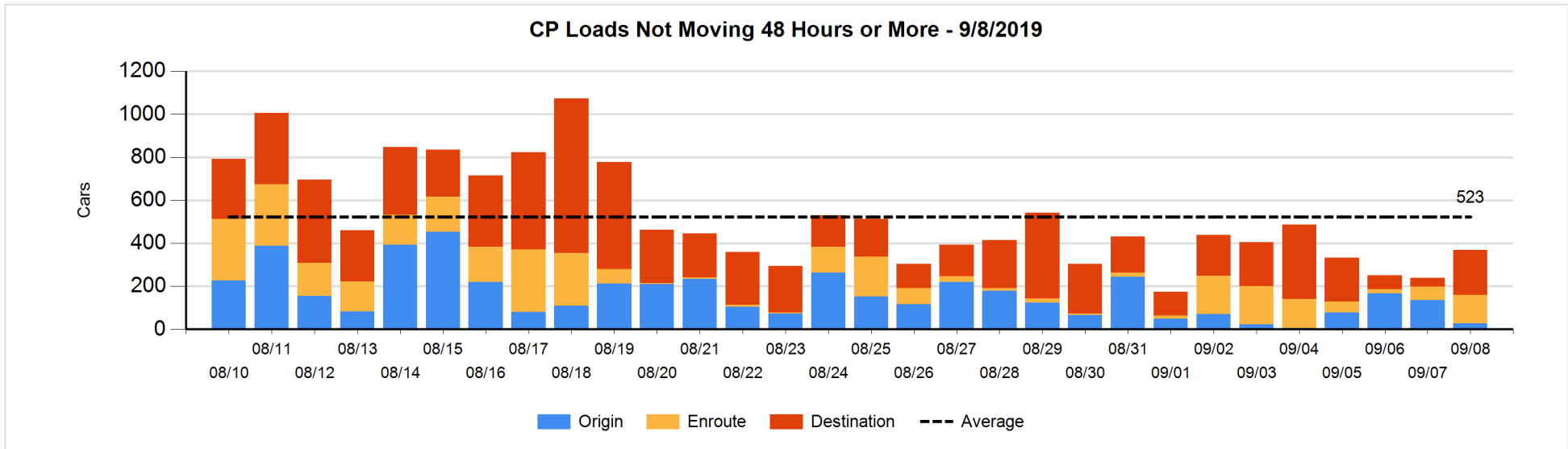
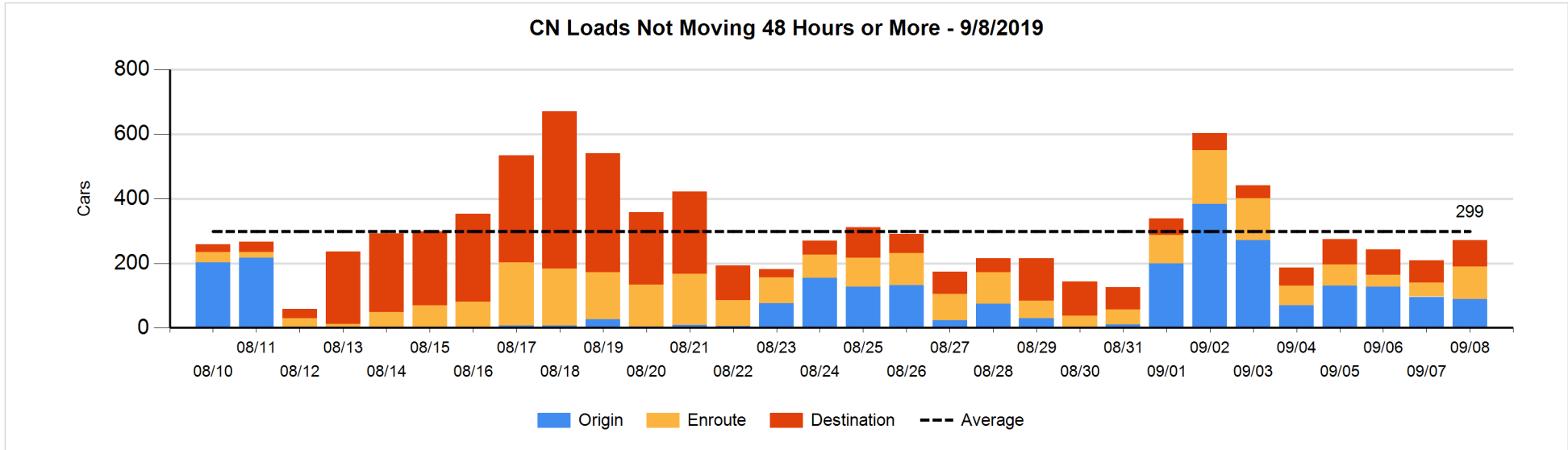


Loads Not Moving 48 Hours or More - 9/8/2019

	E Canada	Prince Rupert	Thunder Bay	USA/MEX	Vancouver	Total
CN						
Origin		69		6	14	89
Enroute	41	45		3	11	100
Destination	6	3	22	40	11	82
	47	117	22	49	36	271
CP						
Origin	1			2	24	27
Enroute	57			71	4	132
Destination			113	16	80	209
	58		113	89	108	368
US Rail / Short Line						
Origin						
Enroute				15		15
Destination	2			18	34	54
	2			33	34	69

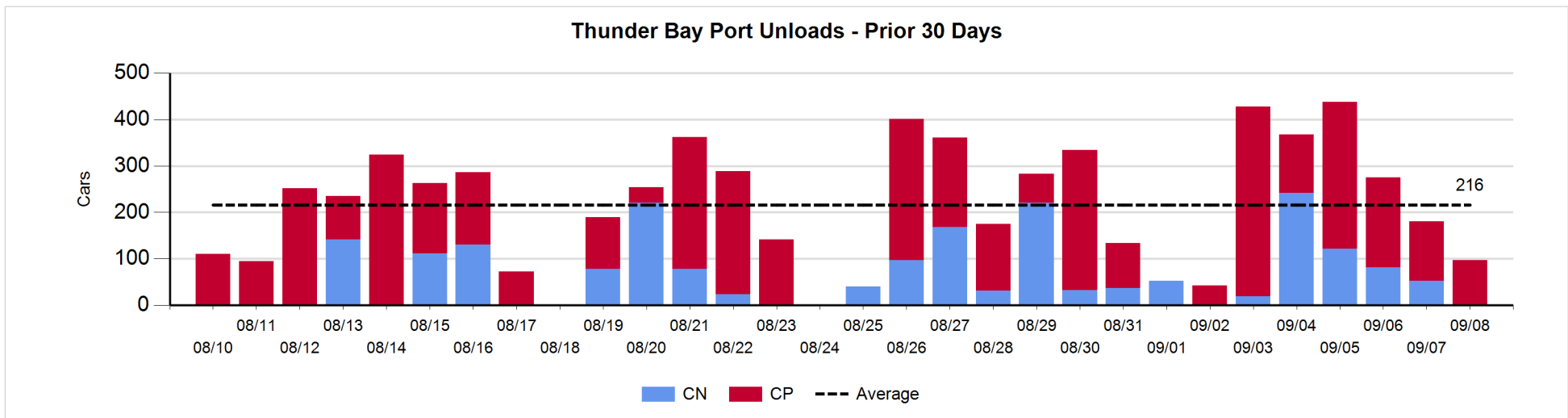
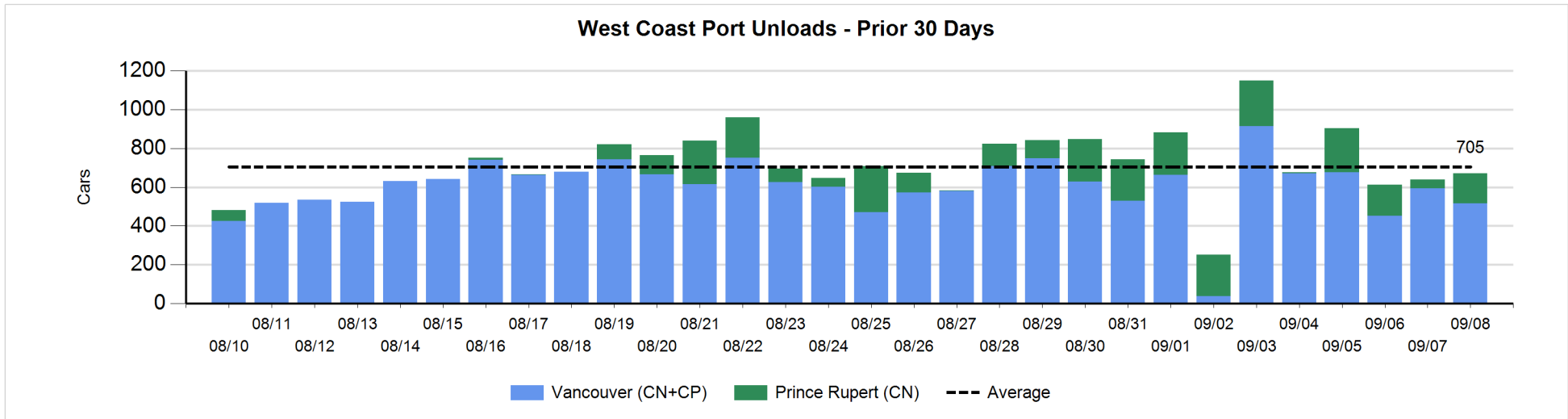
Change in Loads Not Moving 48 Hours or More - 9/8/2019

	E Canada	Prince Rupert	Thunder Bay	USA/MEX	Vancouver	Total
CN						
Origin		0		1	-8	-7
Enroute	12	38		1	5	56
Destination	1	1	-1	27	-15	13
	13	39	-1	29	-18	62
CP						
Origin	-1			1	-109	-109
Enroute	55			18	-4	69
Destination			112	0	56	168
	54		112	19	-57	128
US Rail / Short Line						
Origin						
Enroute				0		0
Destination	0			0	32	32
	0			0	32	32



Port Unloads - 9/8/2019

	Prince Rupert	Vancouver	West Coast Total	Thunder Bay	Total
CN	155	154	309	1	310
CP		362	362	96	458
	155	516	671	97	768



Port Terminal Status

Vancouver

Daily Activity for 9/8/2019

	Cars Arrived	Cars Received in Interchange	Cars Delivered in Interchange	Cars Placed for Unloading	Loads on Wheels at Destination As of 9/8/2019
CN	185	6	141	125	92
CP	489	141	11	433	708
SRY		5			39

Port Unloads

	09/08	09/07	Week To Date	Last Week
CN	154	179	1,258	1,890
CP	362	415	2,603	2,542
SRY		3	63	63

Age Profile of Loaded Cars Waiting Placement for Unloading

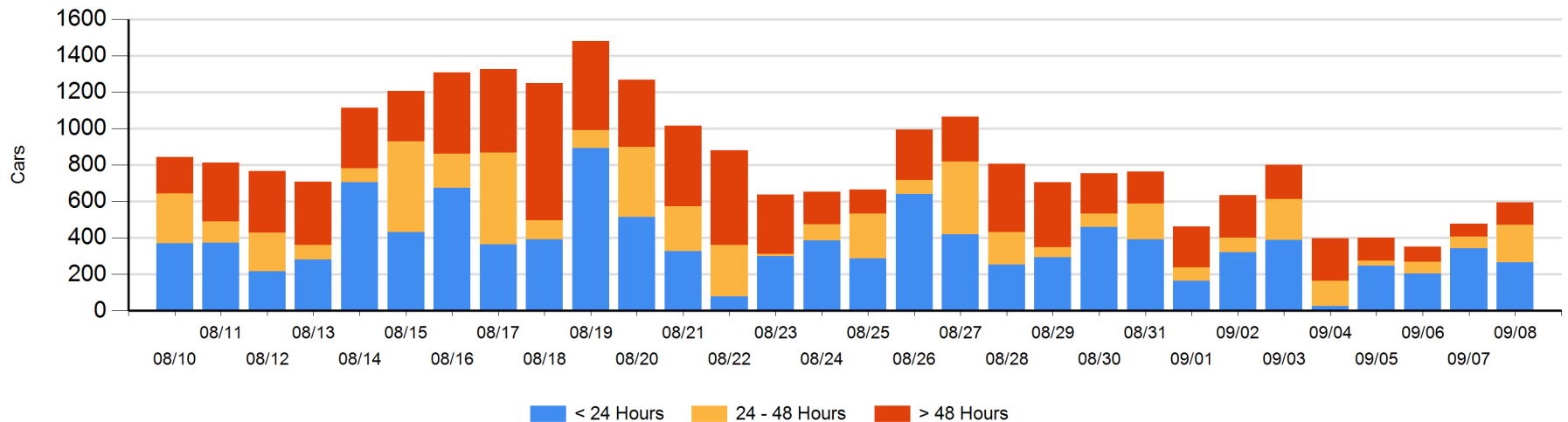
Today

	< 24 Hrs	24 - 48 Hrs	> 48-72 Hrs	> 72 Hrs	Total On Hand
CN	185	62	24	12	283
CP	81	145	41	44	311
SRY					0

Change in Last 24 Hours

	< 24 Hrs	24-48 Hrs	48 - 72 Hrs	> 72 Hrs
CN	15	38	18	2
CP	-91	104	40	-10
SRY				

Loaded Cars on Hand Vancouver Waiting for Placement - Last 30 Days All Railways



Port Terminal Status

Prince Rupert

Daily Activity for 9/8/2019

	Cars Arrived	Cars Received in Interchange	Cars Delivered in Interchange	Cars Placed for Unloading	Loads on Wheels at Destination As of 9/8/2019
CN		140		140	30

Port Unloads

	09/08	09/07	Week To Date	Last Week
CN	155	44	1,040	964

Age Profile of Loaded Cars Waiting Placement for Unloading

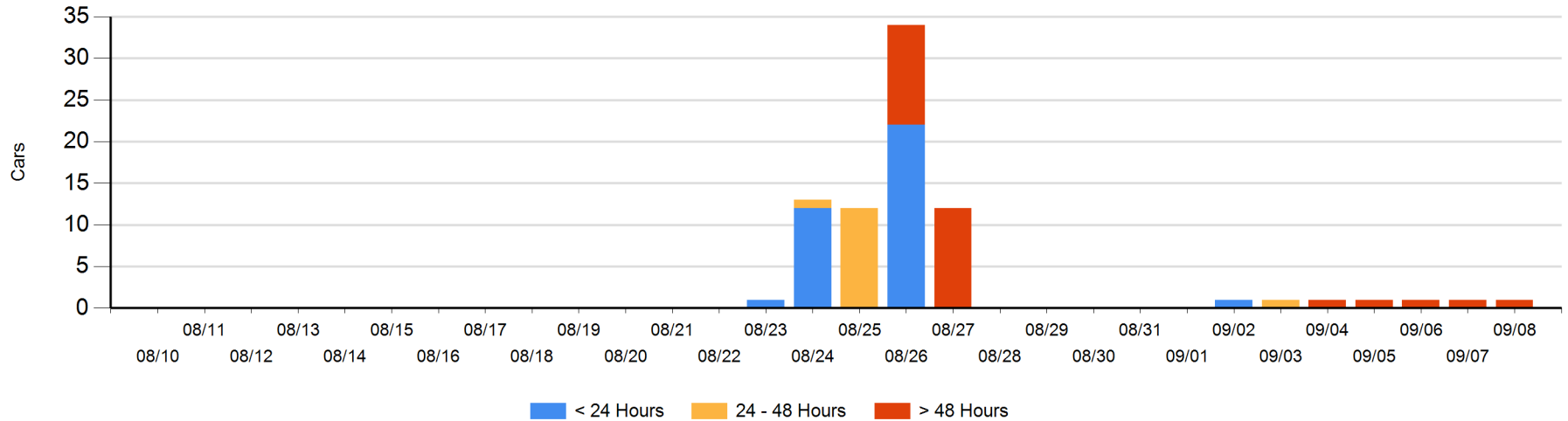
Today

	< 24 Hrs	24 - 48 Hrs	> 48-72 Hrs	> 72 Hrs	Total On Hand
CN				1	1

Change in Last 24 Hours

	< 24 Hrs	24-48 Hrs	48 - 72 Hrs	> 72 Hrs
CN				0

Loaded Cars on Hand Prince Rupert Waiting for Placement - Last 30 Days All Railways



Port Terminal Status

Thunder Bay

Daily Activity for 9/8/2019

	Cars Arrived	Cars Received in Interchange	Cars Delivered in Interchange	Cars Placed for Unloading	Loads on Wheels at Destination As of 9/8/2019
CN	217			50	239
CP	163			110	396

Port Unloads

	09/08	09/07	Week To Date	Last Week
CN	1	53	517	639
CP	96	127	1,311	1,102

Age Profile of Loaded Cars Waiting Placement for Unloading

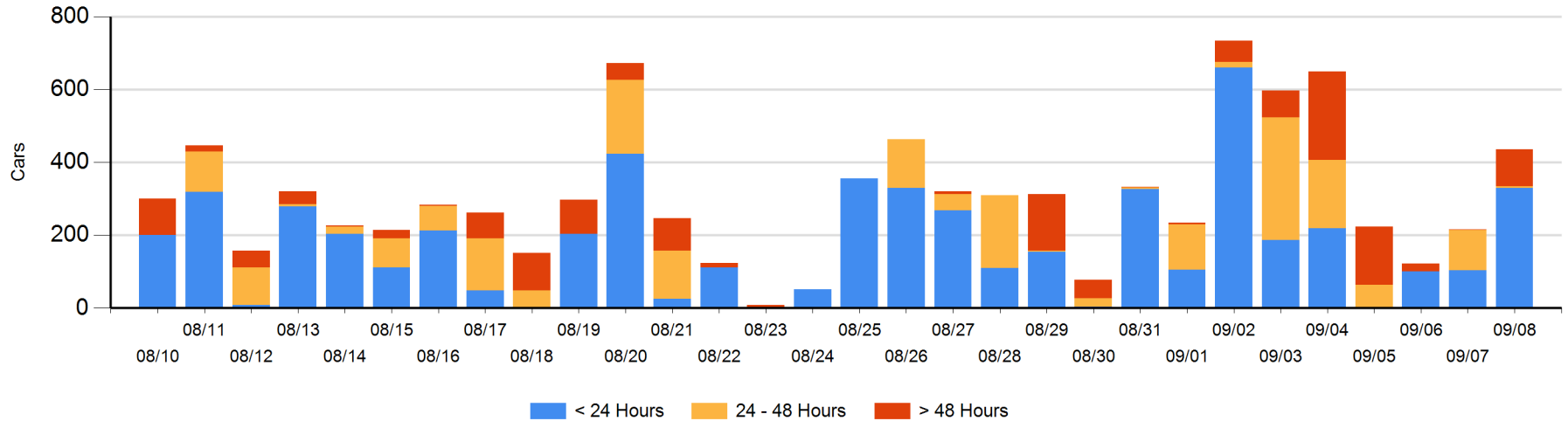
Today

	< 24 Hrs	24 - 48 Hrs	> 48-72 Hrs	> 72 Hrs	Total On Hand
CN	167				167
CP	163	5	100	1	269

Change in Last 24 Hours

	< 24 Hrs	24-48 Hrs	48 - 72 Hrs	> 72 Hrs
CN	167			
CP	59	-106	100	0

Loaded Cars on Hand Thunder Bay Waiting for Placement - Last 30 Days All Railways



Measurement Definitions

Loads on Wheels	<p>Count of loaded rail cars including all rail cars that have been released loaded at origin and have not been reported by the railway as unloaded at destination.</p> <p>Counts include all rail cars (hopper cars and boxcars) moving within a pipeline.</p>
Loads Not Moving	<p>Loaded rail cars for which the railways have not reported a movement event for 48 hours or more whether the rail car is at origin, enroute or at destination.</p>
Port Unloads	<p>Count of rail cars reported by railways as unloaded at the western port destinations of Vancouver, Prince Rupert and Thunder Bay.</p> <p>Unload counts include all rail cars (hopper cars and boxcars) unloaded by all receivers including major port terminals, transloaders and other receivers.</p>
Cars Arrived	<p>Count of rail cars reported as arrived at the destination railway terminal.</p>
Cars Received in Interchange	<p>Count of rail cars received in interchange by each railway within a destination railway terminal. Interchange activity is tracked for the Vancouver and Thunder Bay pipelines as applicable.</p>
Cars Delivered in Interchange	<p>Count of rail cars delivered in interchange by each railway within a destination railway terminal. Interchange activity is tracked for the Vancouver and Thunder Bay pipelines as applicable.</p>
Cars Placed for Unloading	<p>Count of rail cars reported by the railways as placed loaded at the receiver's facility for unloading.</p>
Loads on Wheels at Destination	<p>Count of rail cars that remain under load within the destination railway terminal including rail cars that have been reported as placed for unloading but not yet reported as unloaded.</p>
Waiting Placement for Unloading	<p>Count of rail cars that have been reported as arrived at the destination railway terminal but not reported as placed for unloading by the railway.</p> <p>For the Ports of Vancouver, Prince Rupert and Thunder Bay the count of rail cars waiting placement for unloading is categorized by age – i.e. the elapsed time from arrival at destination to the current report date.</p>