

SPEED READ

- Loads on wheels decreased overnight, marking a decline in both CN and CP volumes. On a net basis, volumes decreased due to lower traffic across all corridors other than USA/MEX.
- Network fluidity deteriorated overnight, led by an increase in idle car counts on both CN and CP by 22% (+60) and 28% (+102), respectively. The total count of cars for 4+ days on both railways gained 17% (+27) overnight - currently at 186 cars.
- One day in Week 6 unloads now ahead of prior week's performance by nearly 700 unloads, marking improved week over week performance at Vancouver and Thunder Bay offset by lower unloads at Prince Rupert. This is in part a reflection of low unloads on Monday of last week due to the Labor Day holiday.

=====

Loads on Wheels

- Loads on wheels decreased 2% (-135) overnight, due to lower traffic on both CN and CP - combined total at 6,499 and 5% below the trailing 30-day average.
- On a net basis, the decline in loads on wheels indicates lower traffic across all corridors other than USA/MEX.
- CN volumes decreased 5% (-137) overnight, with lower volumes across all corridors other than Vancouver. System wide CN loads on wheels currently at 2,818 and 13% below the trailing 30-day average.
- CP volumes declined marginally by (-17) overnight, driven by a decline in volumes in the Vancouver corridor offset by an increase in traffic in the USA/MEX and Thunder Bay corridors. CP system wide loads on wheels presently at 3,542 and 1% above the trailing 30-day average.
- Vancouver presently at 3,665, declined 2% (-76) overnight, now 11% below the trailing 30-day average.
- The Prince Rupert pipeline now at 855, fell 4% (-36) overnight, and 1% above the trailing 30-day average.
- Thunder Bay volumes fell 8% (-72) overnight and have now decreased for the third consecutive day - presently at 836 and 23% below the trailing 30-day average, with 65% of traffic moving on CP.

Hopper Car Rationing

- No hopper cars were rationed by either CN or CP in week 4.

Loads Not Moving

- **The count of cars not moving for 48+ hours increased 25% (+162) overnight, marking higher counts on both CN and CP. Idle car counts presently at 802 and 2% below the trailing 30-day average.**
- CN
 - **The count of idle cars for 48+ hours rose 22% (+60) overnight - presently at 332 cars.**
 - The number of cars idle for 4+ days gained 3% (+4) overnight - presently at 117 cars.
 - The count of cars not moving for 7+ days fell for the third consecutive day, down 9% (-9) overnight - now at 90 cars.
 - Vancouver represents 46% of all idle cars.
 - In total 62% of all idle cars are dwelling at origin locations.
- CP
 - **CP idle car counts for 48+ hours rose 28% (+102) overnight - presently at 470 cars.**
 - The number of cars idle for 4+ days increased significantly by 53% (+24) overnight - currently at 69 cars.
 - The number of cars idle for 7+ days rose for the sixth consecutive day, up 4% (+1) overnight - presently at 29 cars.

- Vancouver accounts for 43% of all idle cars.
- In total 6% of all idle cars are dwelling at origin locations.

Port Performance

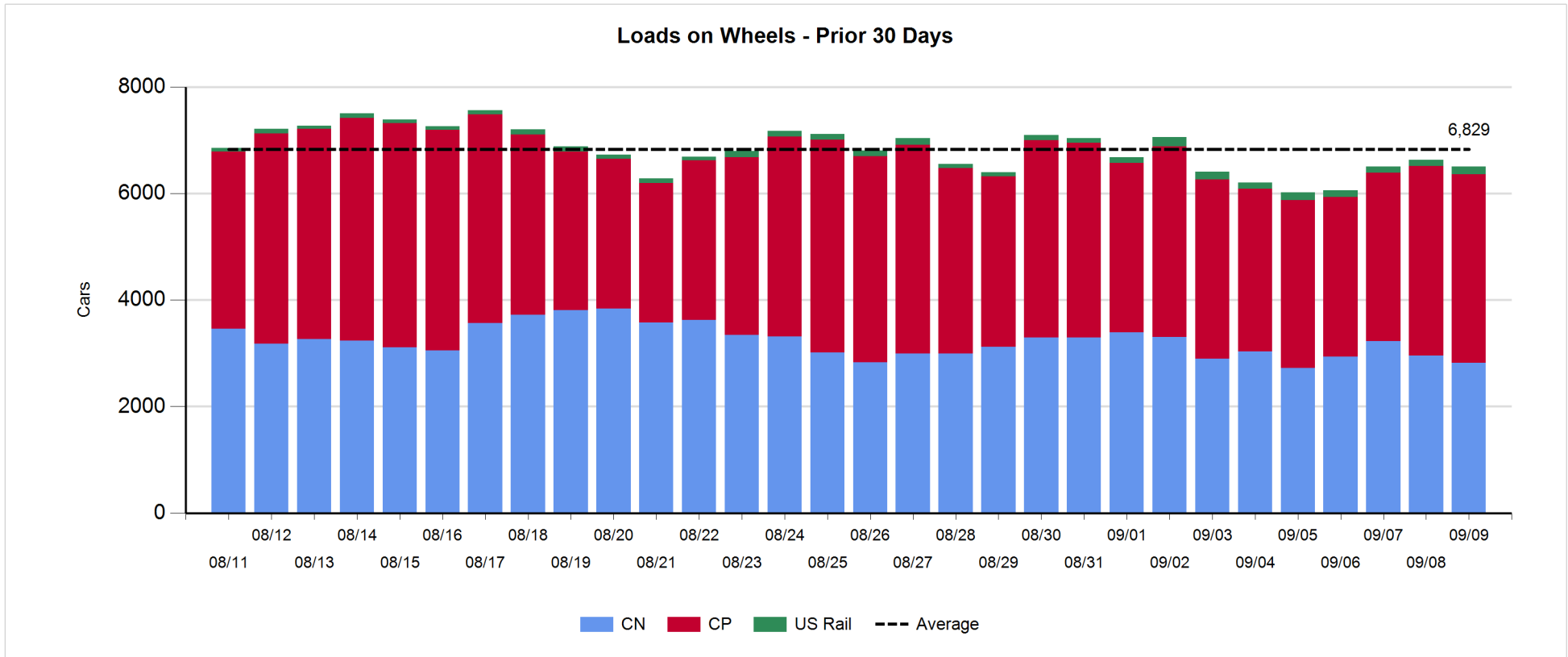
- CN and CP reported a total of 980 cars unloaded at the three major ports, now 5% above the trailing 30-day average. One day in Week 6 unloads now ahead of last week's pace by around 700 unloads, marking higher unloads at Vancouver and Thunder Bay offset by lower unloads at Prince Rupert.
- Vancouver
 - 583 unloads reported by CN and CP at the Port of Vancouver; CN - 228 and CP - 355. One day in Week 6 unloads are tracking ahead of last week's performance by 550 unloads.
 - There are more than 950 cars on site at Vancouver with more than 700 cars arriving at the port in the last 24 hours.
 - CN and CP have 950 cars in British Columbia en route to Vancouver, with more than 300 cars at Kamloops and west, and 61% of traffic moving on CP.
- Prince Rupert
 - Prince Rupert reported 91 unloads, now behind last week's unloads after one day by more than 100 unloads.
 - Loads on wheels now below 1,000 cars - presently at 855 cars.
 - There are more than 150 cars west of Jasper en route to Prince Rupert.
 - There are 100 cars on site at Prince Rupert with 150 cars arriving at the port in the last 24 hours.
- Thunder Bay
 - 306 unloads were reported at Thunder Bay yesterday. One day in Week 6 unloads are tracking ahead of last week's pace by more than 250 unloads.
 - There are 550 cars on site at Thunder Bay with more than 200 cars arriving at the port in the prior 24 hours.
 - There are 50 cars en route to Thunder Bay from Winnipeg and east.

Daily Loads on Wheels - 9/9/2019

	E Canada	Prince Rupert	Thunder Bay	USA/MEX	Vancouver	Total
CN	178	855	296	154	1,335	2,818
CP	233		540	473	2,296	3,542
Short Line	8				34	42
US Rail				97		97
	419	855	836	724	3,665	6,499

Change in Loads on Wheels - Prior 24 Hours

	E Canada	Prince Rupert	Thunder Bay	USA/MEX	Vancouver	Total
CN	-21	-36	-79	-35	34	-137
CP	0		7	81	-105	-17
Short Line	1				-5	-4
US Rail				23		23
	-20	-36	-72	69	-76	-135

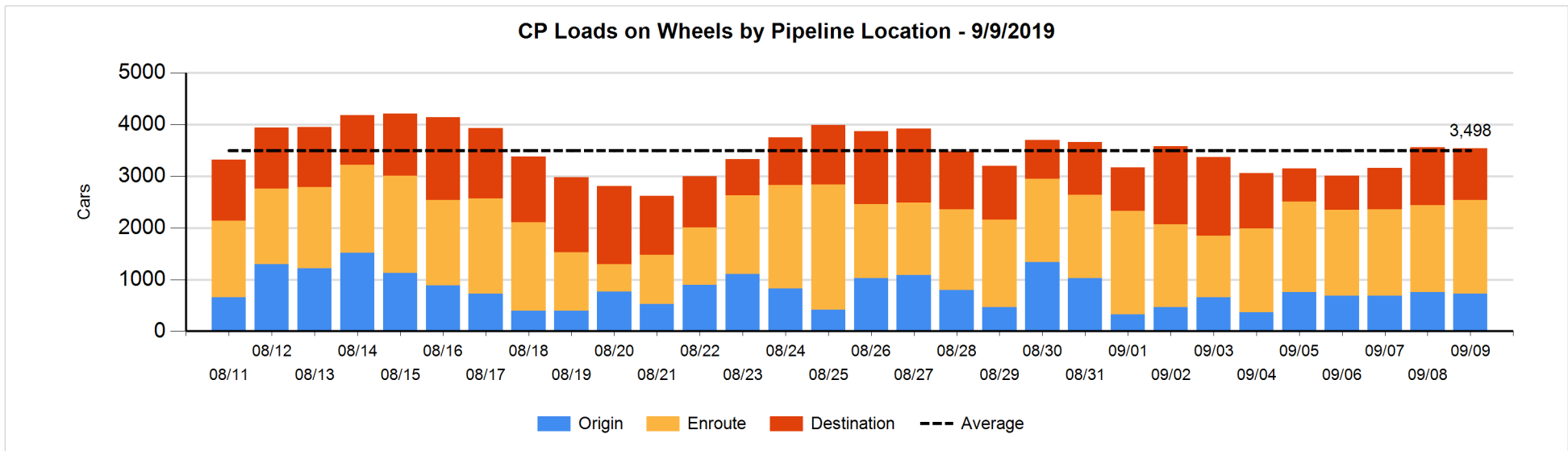
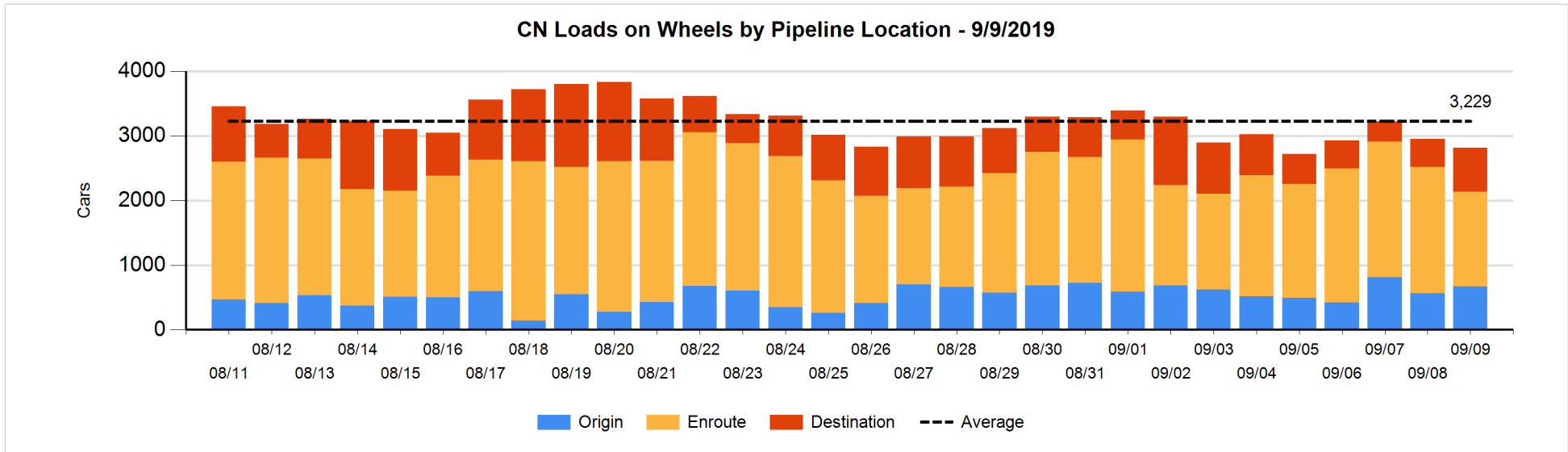


Daily Loads on Wheels By Pipeline Location - 9/9/2019

	E Canada	Prince Rupert	Thunder Bay	USA/MEX	Vancouver	Total
CN						
Origin	3	140	25	4	495	667
Enroute	136	619		109	604	1,468
Destination	39	96	271	41	236	683
	178	855	296	154	1,335	2,818
CP						
Origin	1		209	103	408	721
Enroute	232		49	356	1,184	1,821
Destination			282	14	704	1,000
	233		540	473	2,296	3,542
US Rail / Short Line						
Origin						
Enroute	5			58		63
Destination	3			39	34	76
	8			97	34	139

Change in Daily Loads on Wheels By Pipeline Location - Prior 24 Hours

	E Canada	Prince Rupert	Thunder Bay	USA/MEX	Vancouver	Total
CN						
Origin	3	-94	25	-2	173	105
Enroute	-38	-8	-136	-28	-283	-493
Destination	14	66	32	-5	144	251
	-21	-36	-79	-35	34	-137
CP						
Origin	0		160	1	-197	-36
Enroute	0		-39	82	96	139
Destination			-114	-2	-4	-120
	0		7	81	-105	-17
US Rail / Short Line						
Origin						
Enroute	0			29		29
Destination	1			-6	-5	-10
	1			23	-5	19

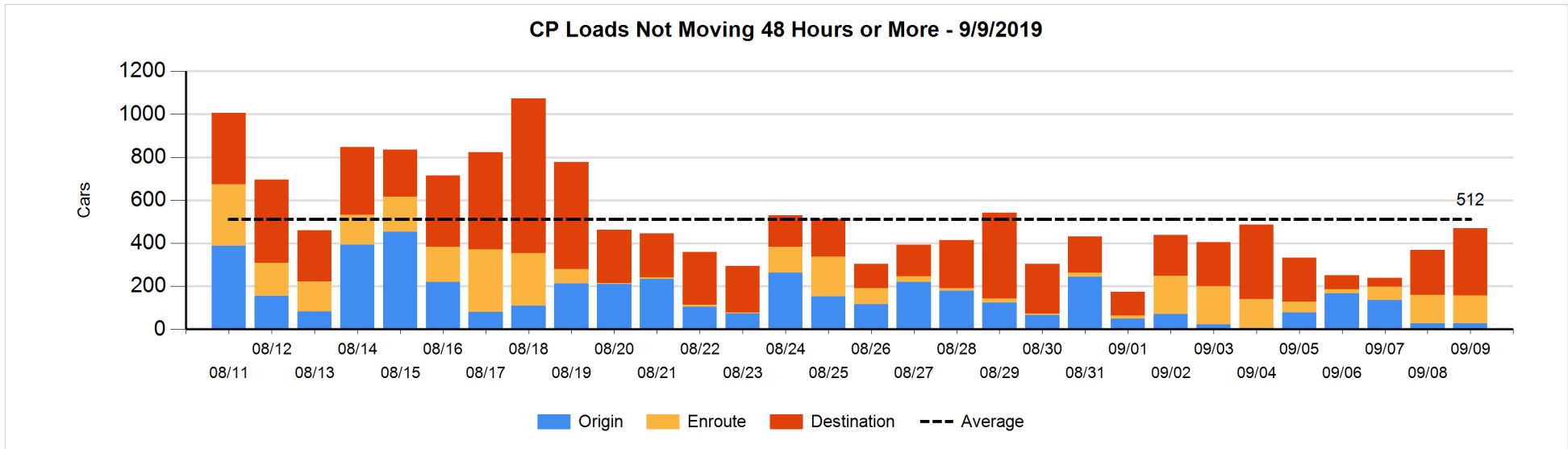
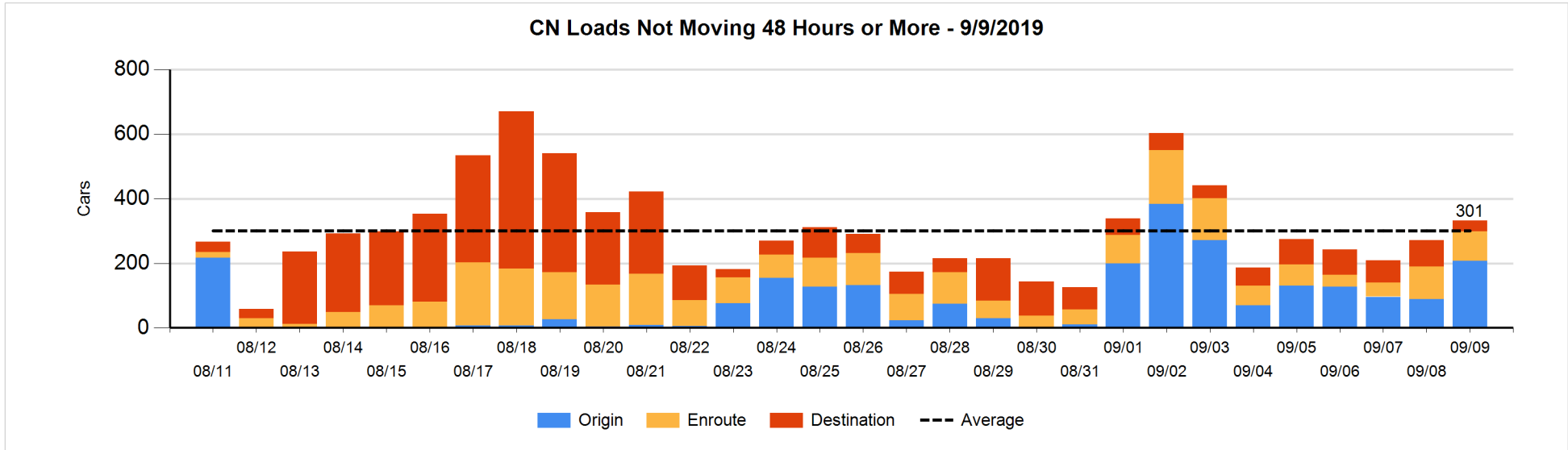


Loads Not Moving 48 Hours or More - 9/9/2019

	E Canada	Prince Rupert	Thunder Bay	USA/MEX	Vancouver	Total
CN						
Origin		86		4	117	207
Enroute	50	12		1	28	91
Destination	6	1		20	7	34
	56	99		25	152	332
CP						
Origin	1			1	25	27
Enroute	118			7	6	131
Destination			126	14	172	312
	119		126	22	203	470
US Rail / Short Line						
Origin						
Enroute				13		13
Destination	2			28	28	58
	2			41	28	71

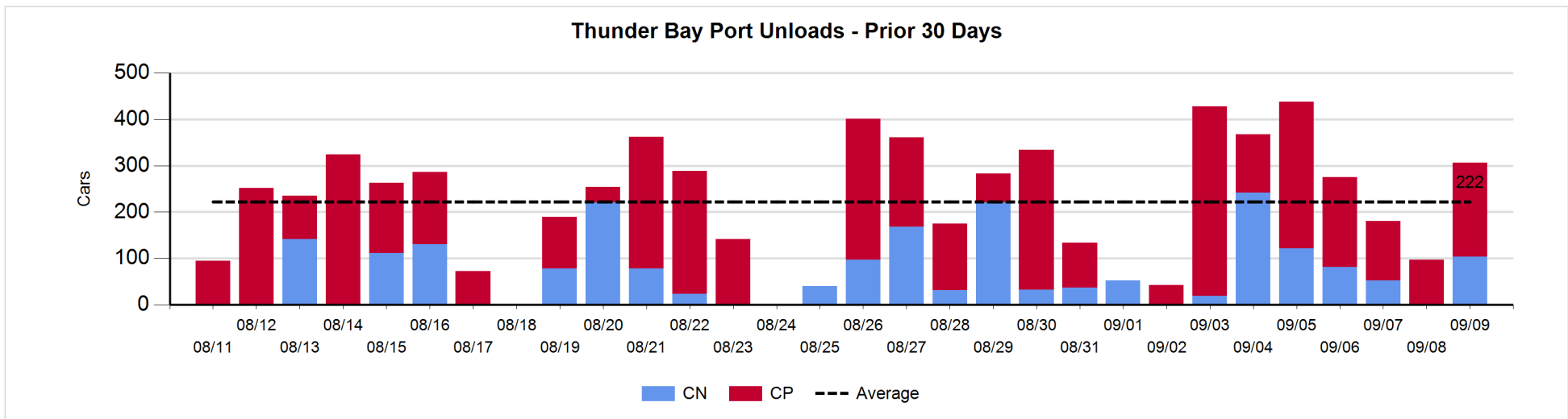
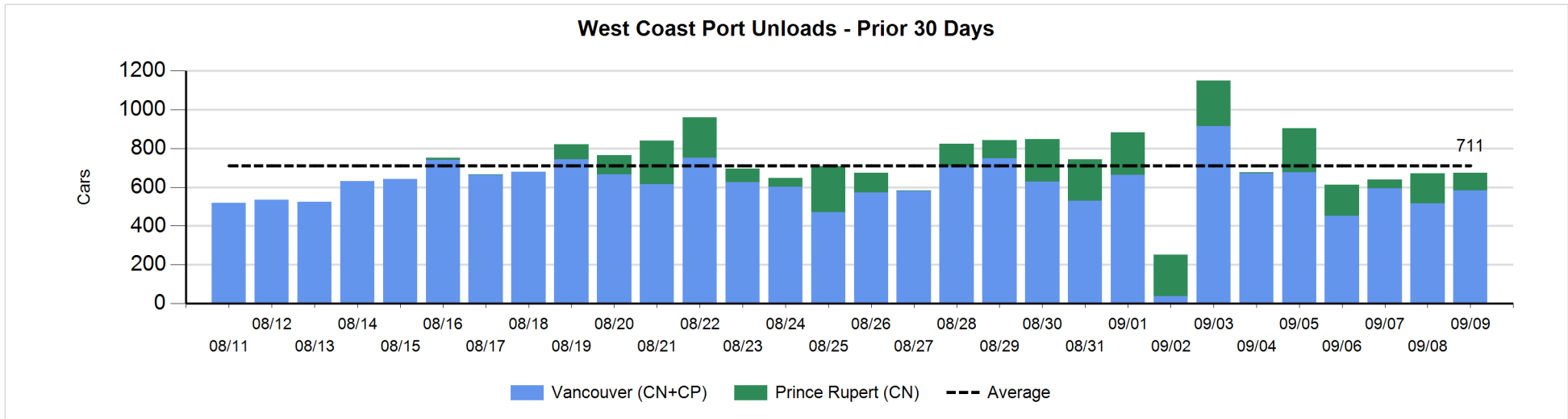
Change in Loads Not Moving 48 Hours or More - 9/9/2019

	E Canada	Prince Rupert	Thunder Bay	USA/MEX	Vancouver	Total
CN						
Origin		17		-2	103	118
Enroute	9	-33		-3	17	-10
Destination	0	-2	-22	-20	-4	-48
	9	-18	-22	-25	116	60
CP						
Origin	0			-1	1	0
Enroute	61			-64	2	-1
Destination			13	-2	92	103
	61		13	-67	95	102
US Rail / Short Line						
Origin						
Enroute				-2		-2
Destination	0			11	-6	5
	0			9	-6	3



Port Unloads - 9/9/2019

	Prince Rupert	Vancouver	West Coast Total	Thunder Bay	Total
CN	91	228	319	104	423
CP		355	355	202	557
	91	583	674	306	980



Port Terminal Status

Vancouver

Daily Activity for 9/9/2019

	Cars Arrived	Cars Received in Interchange	Cars Delivered in Interchange	Cars Placed for Unloading	Loads on Wheels at Destination As of 9/9/2019
CN	292	122	102	252	236
CP	429	102	128	322	704
SRY	4	6		6	34

Port Unloads

	09/09	09/08	Week To Date	Last Week
CN	228	154	228	1,258
CP	355	362	355	2,603
SRY	6		6	63

Age Profile of Loaded Cars Waiting Placement for Unloading

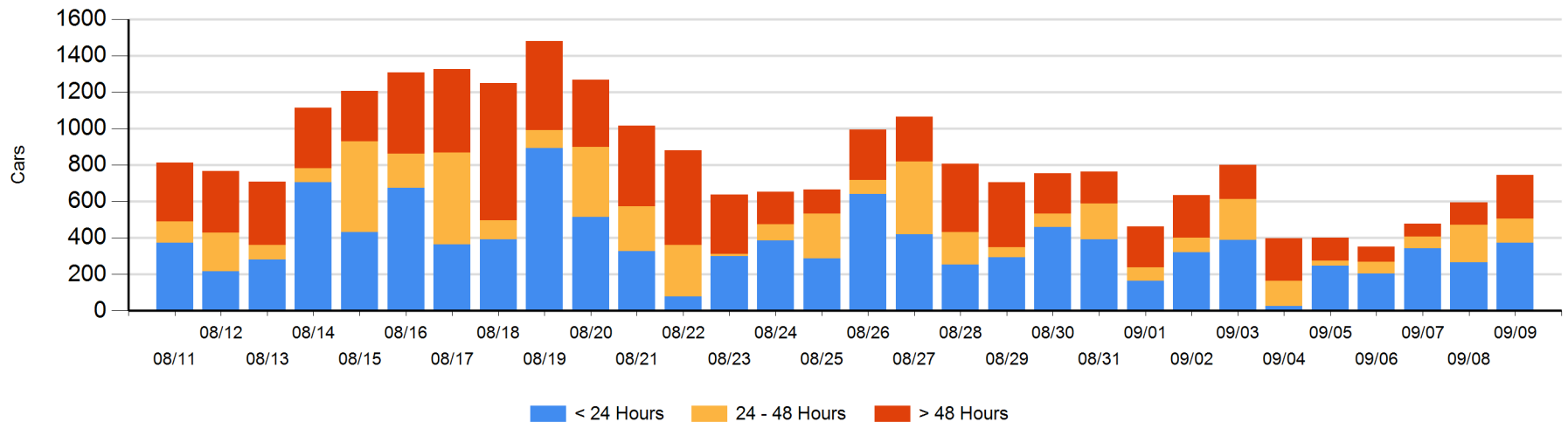
Today

	< 24 Hrs	24 - 48 Hrs	> 48-72 Hrs	> 72 Hrs	Total On Hand
CN	162	57	28	30	277
CP	207	78	142	38	465
SRY	3				3

Change in Last 24 Hours

	< 24 Hrs	24-48 Hrs	48 - 72 Hrs	> 72 Hrs
CN	-23	-5	4	18
CP	126	-67	101	-6
SRY	3			

Loaded Cars on Hand Vancouver Waiting for Placement - Last 30 Days All Railways



Port Terminal Status

Prince Rupert

Daily Activity for 9/9/2019

	Cars Arrived	Cars Received in Interchange	Cars Delivered in Interchange	Cars Placed for Unloading	Loads on Wheels at Destination As of 9/9/2019
CN	157			158	96

Port Unloads

	09/09	09/08	Week To Date	Last Week
CN	91	155	91	1,040

Age Profile of Loaded Cars Waiting Placement for Unloading

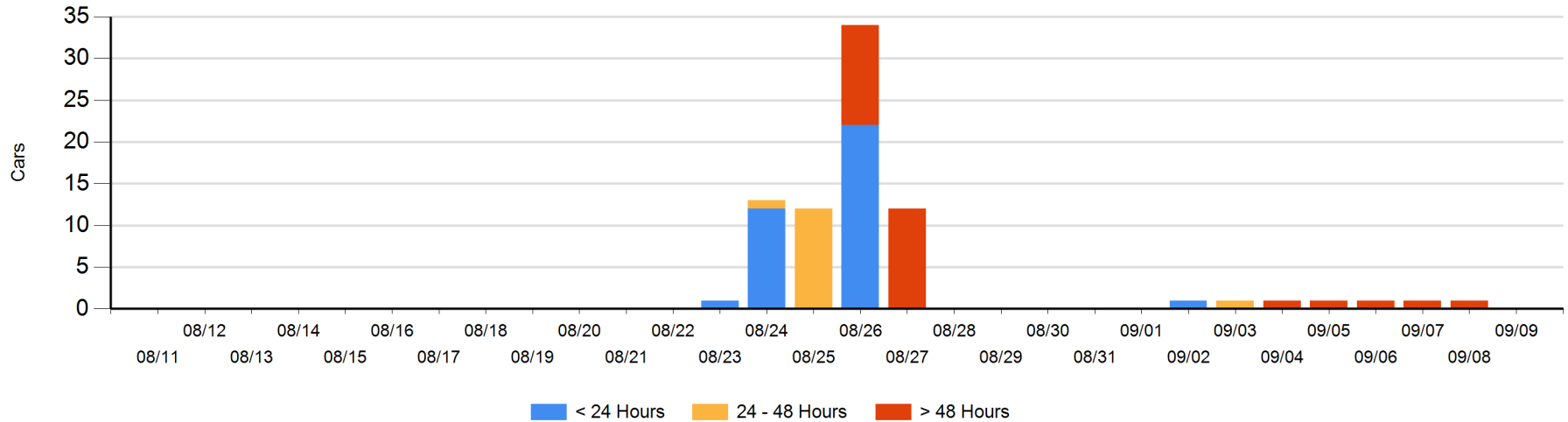
Today

	< 24 Hrs	24 - 48 Hrs	> 48-72 Hrs	> 72 Hrs	Total On Hand
CN					0

Change in Last 24 Hours

	< 24 Hrs	24-48 Hrs	48 - 72 Hrs	> 72 Hrs
CN				-1

Loaded Cars on Hand Prince Rupert Waiting for Placement - Last 30 Days All Railways



Port Terminal Status

Thunder Bay

Daily Activity for 9/9/2019

	Cars Arrived	Cars Received in Interchange	Cars Delivered in Interchange	Cars Placed for Unloading	Loads on Wheels at Destination As of 9/9/2019
CN	136			244	271
CP	88			96	282

Port Unloads

	09/09	09/08	Week To Date	Last Week
CN	104	1	104	517
CP	202	96	202	1,311

Age Profile of Loaded Cars Waiting Placement for Unloading

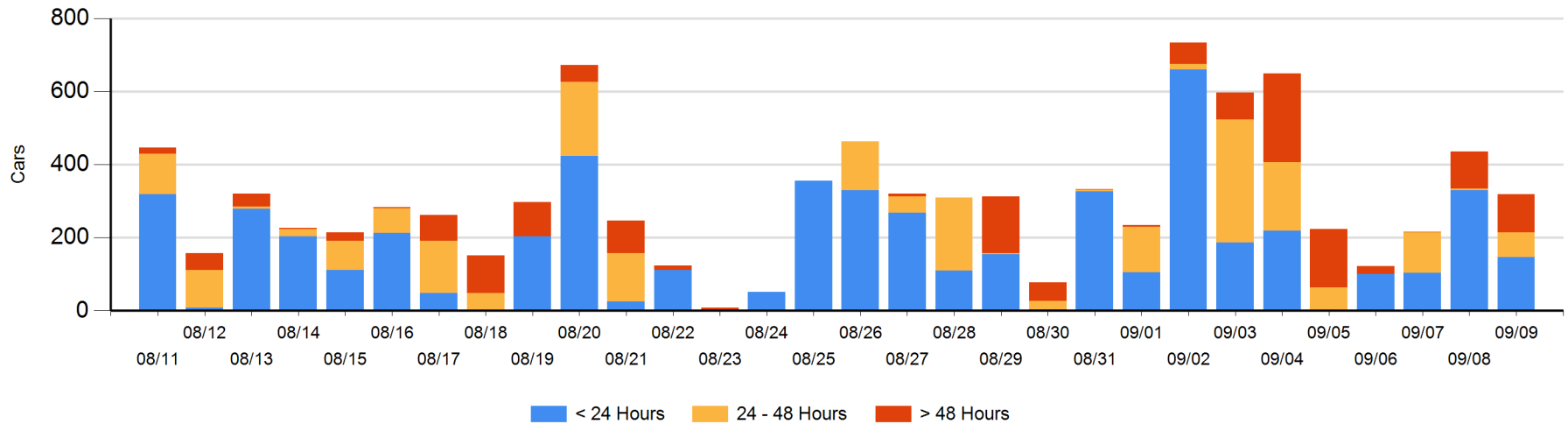
Today

	< 24 Hrs	24 - 48 Hrs	> 48-72 Hrs	> 72 Hrs	Total On Hand
CN	59				59
CP	88	67	4	101	260

Change in Last 24 Hours

	< 24 Hrs	24-48 Hrs	48 - 72 Hrs	> 72 Hrs
CN	-108			
CP	-75	62	-96	100

Loaded Cars on Hand Thunder Bay Waiting for Placement - Last 30 Days All Railways



Measurement Definitions

Loads on Wheels	<p>Count of loaded rail cars including all rail cars that have been released loaded at origin and have not been reported by the railway as unloaded at destination.</p> <p>Counts include all rail cars (hopper cars and boxcars) moving within a pipeline.</p>
Loads Not Moving	<p>Loaded rail cars for which the railways have not reported a movement event for 48 hours or more whether the rail car is at origin, enroute or at destination.</p>
Port Unloads	<p>Count of rail cars reported by railways as unloaded at the western port destinations of Vancouver, Prince Rupert and Thunder Bay.</p> <p>Unload counts include all rail cars (hopper cars and boxcars) unloaded by all receivers including major port terminals, transloaders and other receivers.</p>
Cars Arrived	<p>Count of rail cars reported as arrived at the destination railway terminal.</p>
Cars Received in Interchange	<p>Count of rail cars received in interchange by each railway within a destination railway terminal. Interchange activity is tracked for the Vancouver and Thunder Bay pipelines as applicable.</p>
Cars Delivered in Interchange	<p>Count of rail cars delivered in interchange by each railway within a destination railway terminal. Interchange activity is tracked for the Vancouver and Thunder Bay pipelines as applicable.</p>
Cars Placed for Unloading	<p>Count of rail cars reported by the railways as placed loaded at the receiver's facility for unloading.</p>
Loads on Wheels at Destination	<p>Count of rail cars that remain under load within the destination railway terminal including rail cars that have been reported as placed for unloading but not yet reported as unloaded.</p>
Waiting Placement for Unloading	<p>Count of rail cars that have been reported as arrived at the destination railway terminal but not reported as placed for unloading by the railway.</p> <p>For the Ports of Vancouver, Prince Rupert and Thunder Bay the count of rail cars waiting placement for unloading is categorized by age – i.e. the elapsed time from arrival at destination to the current report date.</p>