

SPEED READ

- Loads on wheels declined overnight, marking a decline in both CN and CP volumes. On a net basis, volumes fell due to lower traffic across all corridors other than Vancouver.
- Network fluidity improved overnight, led by a decline in idle car counts on both CN and CP by 14% (-47) and 53% (-220), respectively. The total count of cars for 4+ days on both railways declined 17% (-32) overnight - currently at 153 cars.
- Two days in Week 6 unloads now ahead of prior week's performance by 200 unloads, marking improved week over week performance at Vancouver and Thunder Bay offset by reduced unloads at Prince Rupert.

=====

Loads on Wheels

- Loads on wheels declined 4% (-275) overnight, due to lower volumes on both CN and CP - combined total at 6,227 and 9% below the trailing 30-day average.
- On a net basis, the decline in loads on wheels indicates lower traffic across all corridors other than Vancouver.
- CN volumes declined 10% (-274) overnight and have now decreased for the third consecutive day, with lower traffic in the Prince Rupert, Thunder Bay and Vancouver corridors offset by higher traffic in the E. Canada and USA/MEX corridors. System wide CN loads on wheels now at 2,544, the lowest seen in the last 30 days, and 20% below the trailing 30-day average.
- CP volumes declined 2% (-79) overnight, driven by a decline in volumes in the USA/MEX and E. Canada corridors offset by an increase in volumes in the Thunder Bay and Vancouver corridors. CP system wide loads on wheels now at 3,467 and 1% below the trailing 30-day average.
- Vancouver presently at 3,712, increased slightly by 1% (+44) overnight, now 9% below the trailing 30-day average.
- The Prince Rupert pipeline currently at 689, decreased 19% (-166) overnight and have now decreased for the third consecutive day, and 20% below the trailing 30-day average.
- Thunder Bay volumes declined for the fourth consecutive day, down 8% (-63) overnight - presently at 773 and 28% below the trailing 30-day average, with 79% of traffic moving on CP.

Hopper Car Rationing

- No hopper cars were rationed by either CN or CP in week 4.

Loads Not Moving

- **The count of cars not moving for 48+ hours declined 36% (-267) overnight, marking lower counts on both CN and CP. Idle car counts presently at 481 and 39% below the trailing 30-day average.**
- CN
 - **The count of idle cars for 48+ hours declined 14% (-47) overnight - presently at 284 cars.**
 - The number of cars idle for 4+ days decreased significantly by 53% (-61) overnight - currently at 55 cars.
 - The count of cars not moving for 7+ days declined significantly by 79% (-71) overnight and have now decreased for the fourth consecutive day - currently at 19 cars.
 - Vancouver represents 68% of all idle cars.
 - In total 59% of all idle cars are dwelling at origin locations.
- CP
 - **CP idle car counts for 48+ hours declined significantly by 53% (-220) overnight - currently at 197 cars.**

- The number of cars idle for 4+ days increased for the third consecutive day, up 42% (+29) overnight - currently at 98 cars.
- The number of cars idle for 7+ days increased for the seventh consecutive day, up 14% (+4) overnight - presently at 33 cars.
- Vancouver accounts for 72% of all idle cars.
- In total 12% of all idle cars are dwelling at origin locations.

Port Performance

- CN and CP reported a total of 1,101 cars unloaded at the three major ports, now 16% above the trailing 30-day average. Two days in Week 6 unloads now ahead of last week's pace by 200 unloads, marking higher unloads at Vancouver and Thunder Bay offset by reduced unloads at Prince Rupert.
- Vancouver
 - 618 unloads reported by CN and CP at the Port of Vancouver; CN - 274 and CP - 344. Two days in Week 6 unloads are tracking ahead of last week's performance by 250 unloads.
 - There are 850 cars on site at Vancouver with 500 cars arriving at the port in the last 24 hours.
 - CN and CP have nearly 750 cars in British Columbia en route to Vancouver, with 350 cars at Kamloops and west, and 80% of traffic moving on CP.
- Prince Rupert
 - Prince Rupert reported 202 unloads, now behind last week's unloads after two days by 150 unloads.
 - Loads on wheels now below 1,000 cars - currently at 689 cars.
 - There are 250 cars west of Jasper en route to Prince Rupert.
 - There is 1 car on site at Prince Rupert with 100 cars arriving at the port in the last 24 hours.
- Thunder Bay
 - 281 unloads were reported at Thunder Bay yesterday. Two days in Week 6 unloads are tracking ahead of last week's pace by more than 100 unloads.
 - There are more than 250 cars on site at Thunder Bay with zero cars arriving at the port in the prior 24 hours.
 - There are more than 150 cars en route to Thunder Bay from Winnipeg and east.

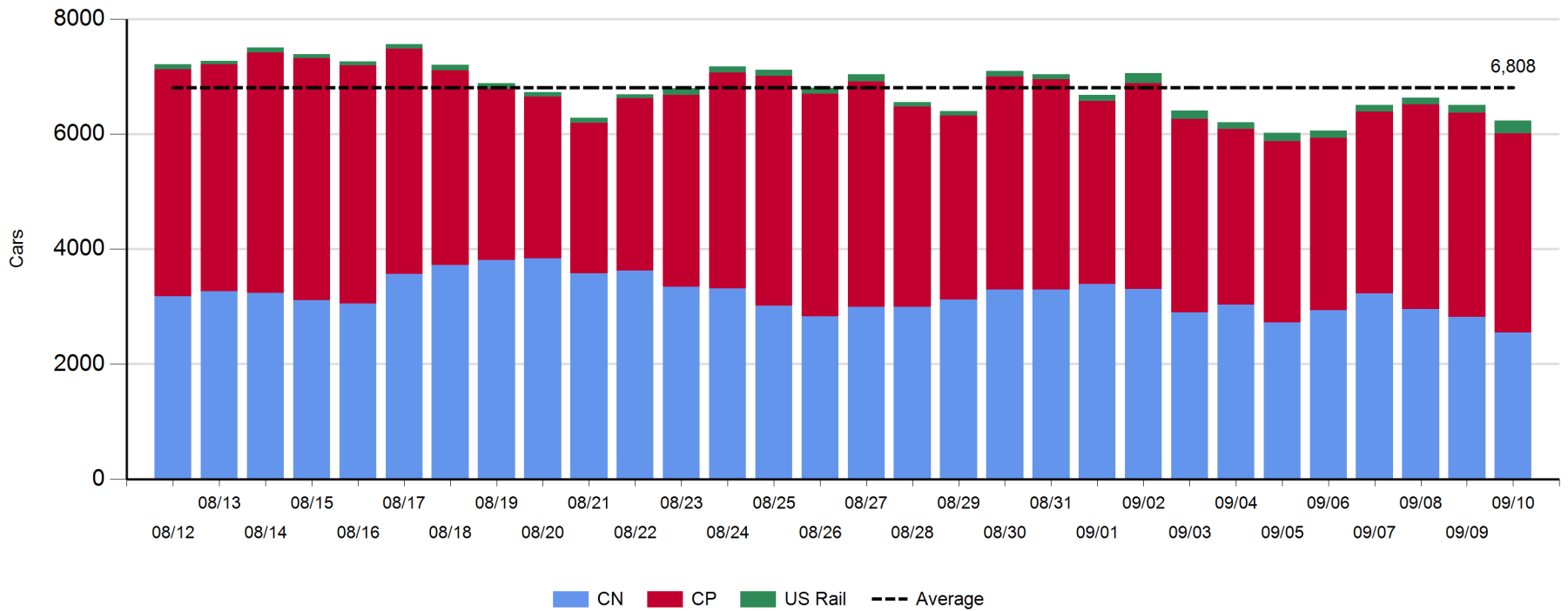
Daily Loads on Wheels - 9/10/2019

	E Canada	Prince Rupert	Thunder Bay	USA/MEX	Vancouver	Total
CN	209	689	165	166	1,315	2,544
CP	136		608	357	2,366	3,467
Short Line	16				31	47
US Rail				169		169
	361	689	773	692	3,712	6,227

Change in Loads on Wheels - Prior 24 Hours

	E Canada	Prince Rupert	Thunder Bay	USA/MEX	Vancouver	Total
CN	31	-166	-131	12	-20	-274
CP	-97		68	-117	67	-79
Short Line	8				-3	5
US Rail				73		73
	-58	-166	-63	-32	44	-275

Loads on Wheels - Prior 30 Days

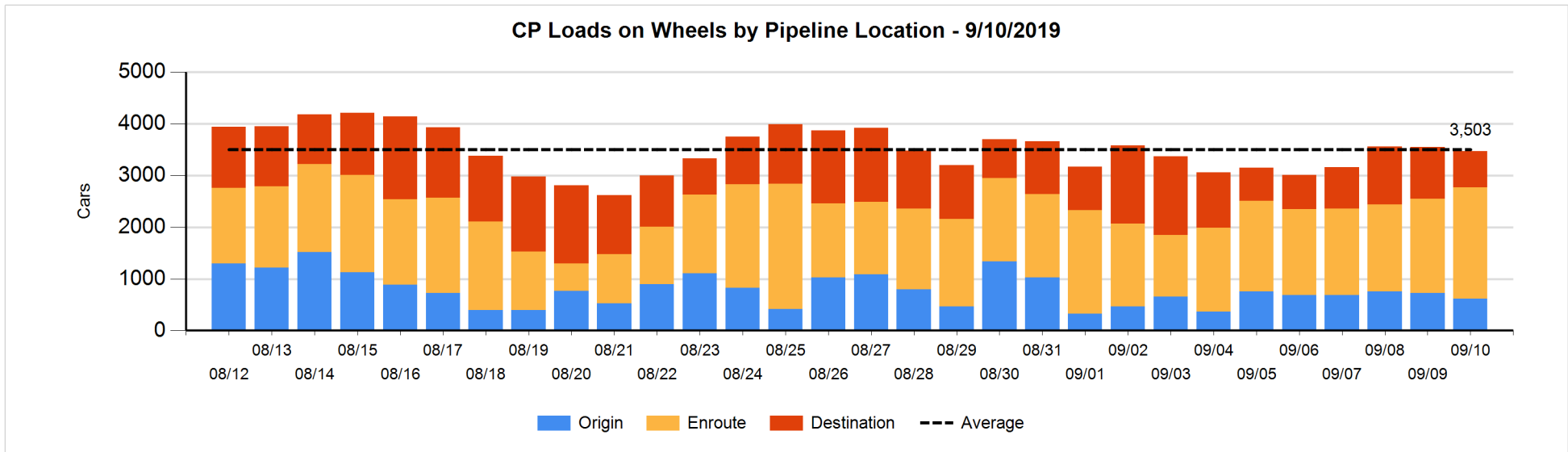
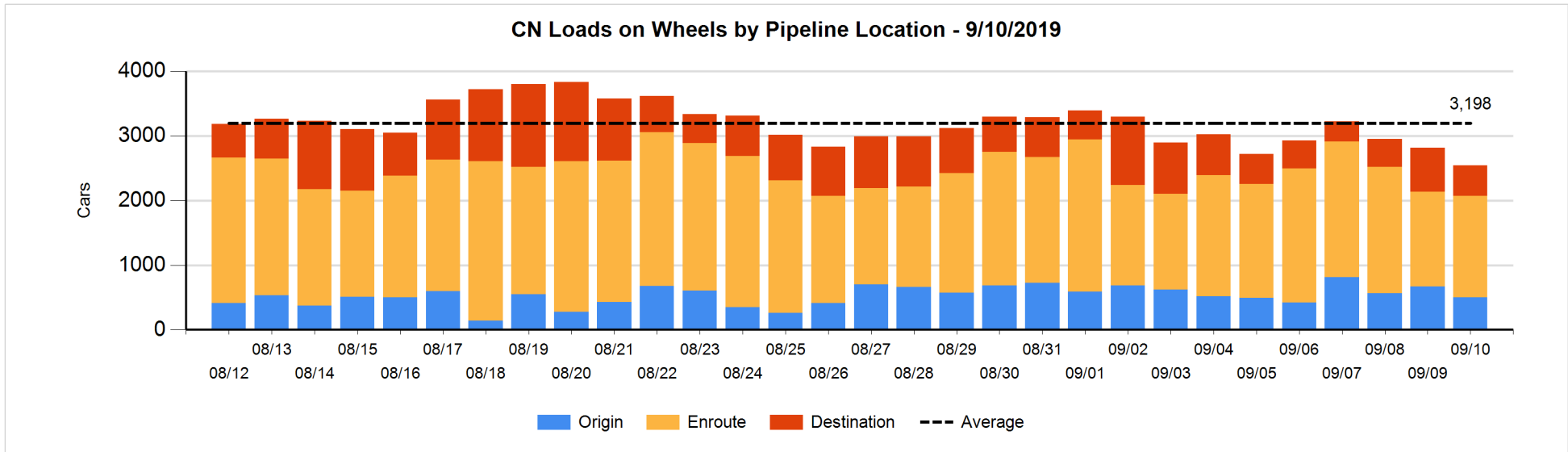


Daily Loads on Wheels By Pipeline Location - 9/10/2019

	E Canada	Prince Rupert	Thunder Bay	USA/MEX	Vancouver	Total
CN						
Origin	3	83		29	388	503
Enroute	166	605	25	104	664	1,564
Destination	40	1	140	33	263	477
	209	689	165	166	1,315	2,544
CP						
Origin	3		226	101	286	616
Enroute	133		250	245	1,524	2,152
Destination			132	11	556	699
	136		608	357	2,366	3,467
US Rail / Short Line						
Origin						
Enroute	13			119		132
Destination	3			50	31	84
	16			169	31	216

Change in Daily Loads on Wheels By Pipeline Location - Prior 24 Hours

	E Canada	Prince Rupert	Thunder Bay	USA/MEX	Vancouver	Total
CN						
Origin	0	-57	-25	25	-107	-164
Enroute	30	-14	25	-5	60	96
Destination	1	-95	-131	-8	27	-206
	31	-166	-131	12	-20	-274
CP						
Origin	2		17	-2	-124	-107
Enroute	-99		201	-112	339	329
Destination			-150	-3	-148	-301
	-97		68	-117	67	-79
US Rail / Short Line						
Origin						
Enroute	8			62		70
Destination	0			11	-3	8
	8			73	-3	78

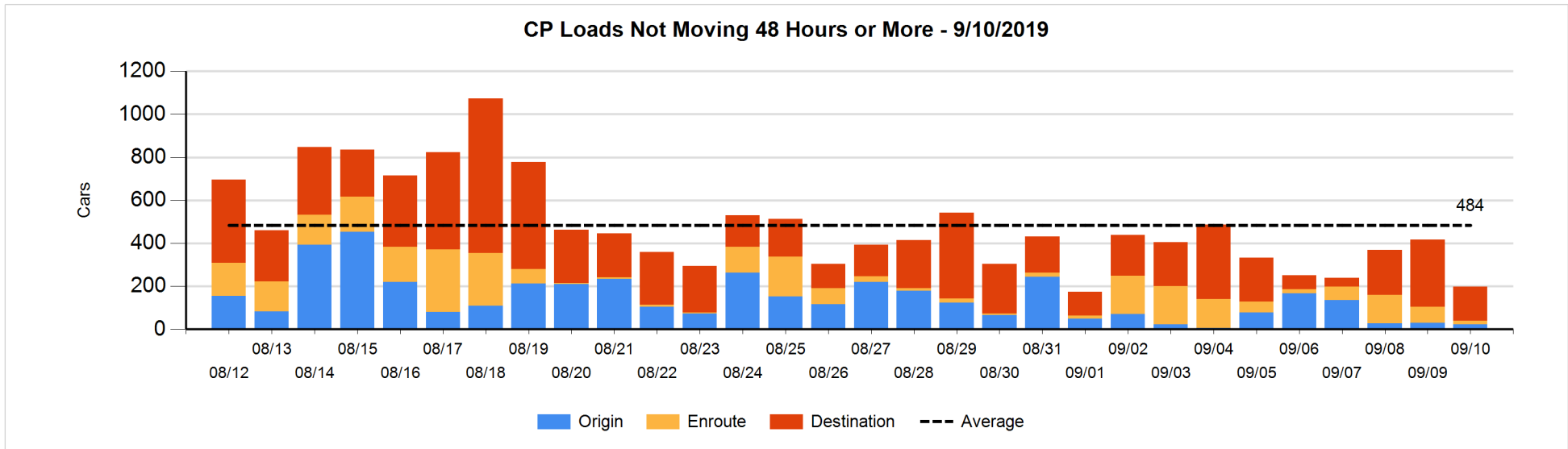
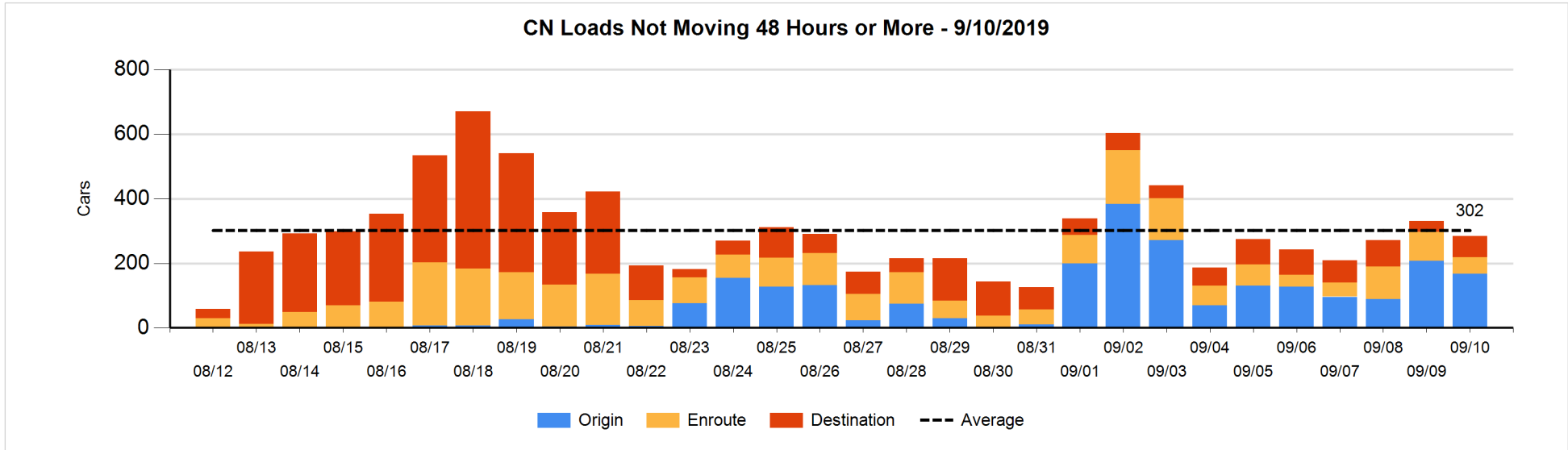


Loads Not Moving 48 Hours or More - 9/10/2019

	E Canada	Prince Rupert	Thunder Bay	USA/MEX	Vancouver	Total
CN						
Origin				2	166	168
Enroute	22	3		1	24	50
Destination	22	1	32	7	4	66
	44	4	32	10	194	284
CP						
Origin	1				22	23
Enroute	2			7	7	16
Destination			35	11	112	158
	3		35	18	141	197
US Rail / Short Line						
Origin						
Enroute				12		12
Destination	2			30	24	56
	2			42	24	68

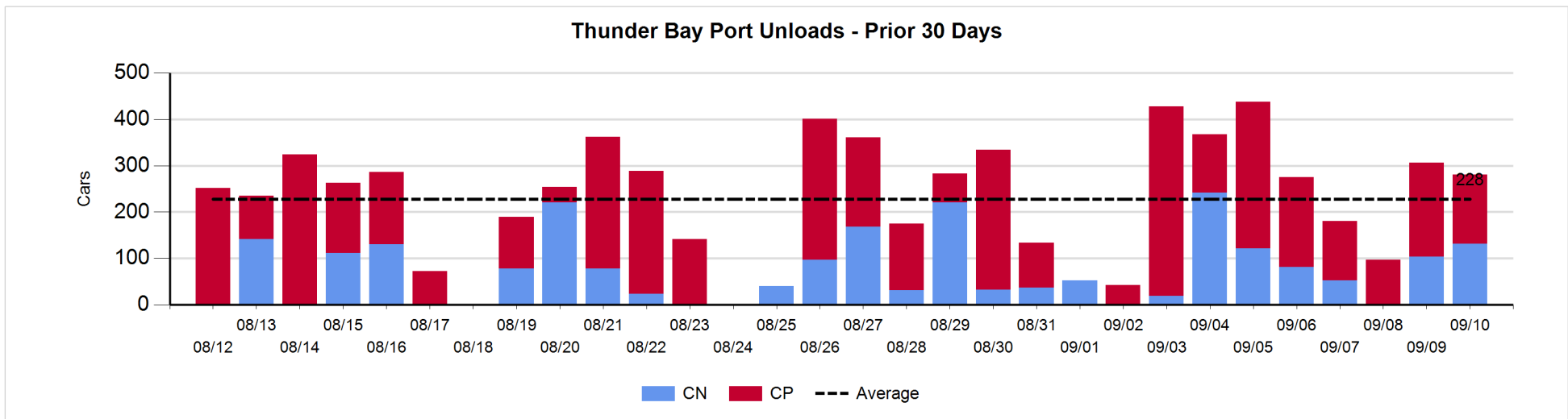
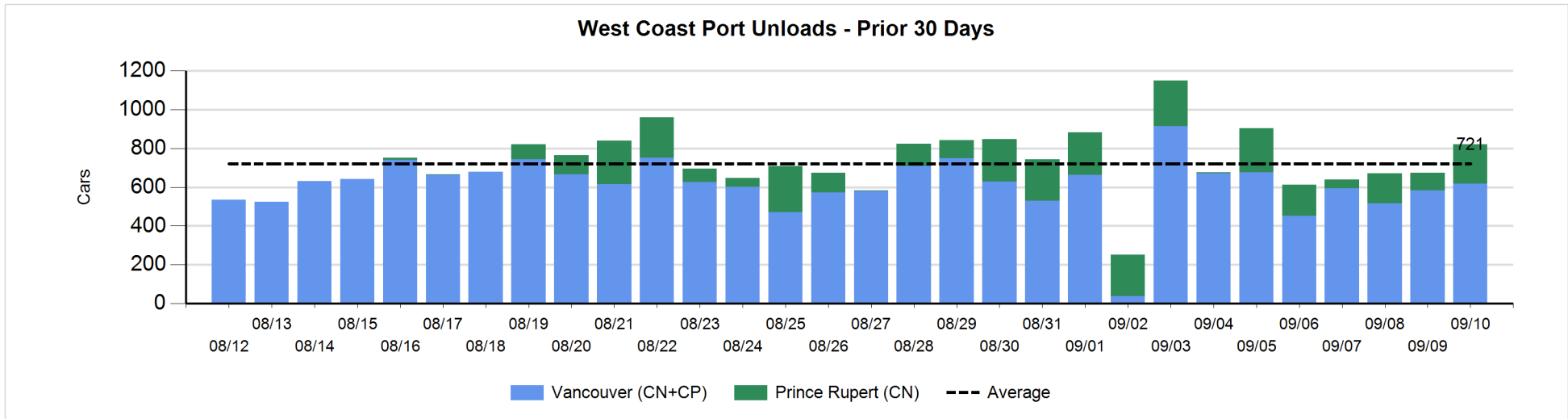
Change in Loads Not Moving 48 Hours or More - 9/10/2019

	E Canada	Prince Rupert	Thunder Bay	USA/MEX	Vancouver	Total
CN						
Origin		-86		-2	49	-39
Enroute	-28	-9		0	-3	-40
Destination	16	0	32	-13	-3	32
	-12	-95	32	-15	43	-47
CP						
Origin	0			-1	-5	-6
Enroute	-61			0	1	-60
Destination			-91	-3	-60	-154
	-61		-91	-4	-64	-220
US Rail / Short Line						
Origin						
Enroute				-1		-1
Destination	0			2	-4	-2
	0			1	-4	-3



Port Unloads - 9/10/2019

	Prince Rupert	Vancouver	West Coast Total	Thunder Bay	Total
CN	202	274	476	131	607
CP		344	344	150	494
	202	618	820	281	1,101



Port Terminal Status

Vancouver

Daily Activity for 9/10/2019

	Cars Arrived	Cars Received in Interchange	Cars Delivered in Interchange	Cars Placed for Unloading	Loads on Wheels at Destination As of 9/10/2019
CN	152	144	108	278	263
CP	353	108	150	362	556
SRY		6		9	31

Port Unloads

	09/10	09/09	Week To Date	Last Week
CN	274	228	502	1,258
CP	344	355	699	2,603
SRY	9	6	15	63

Age Profile of Loaded Cars Waiting Placement for Unloading

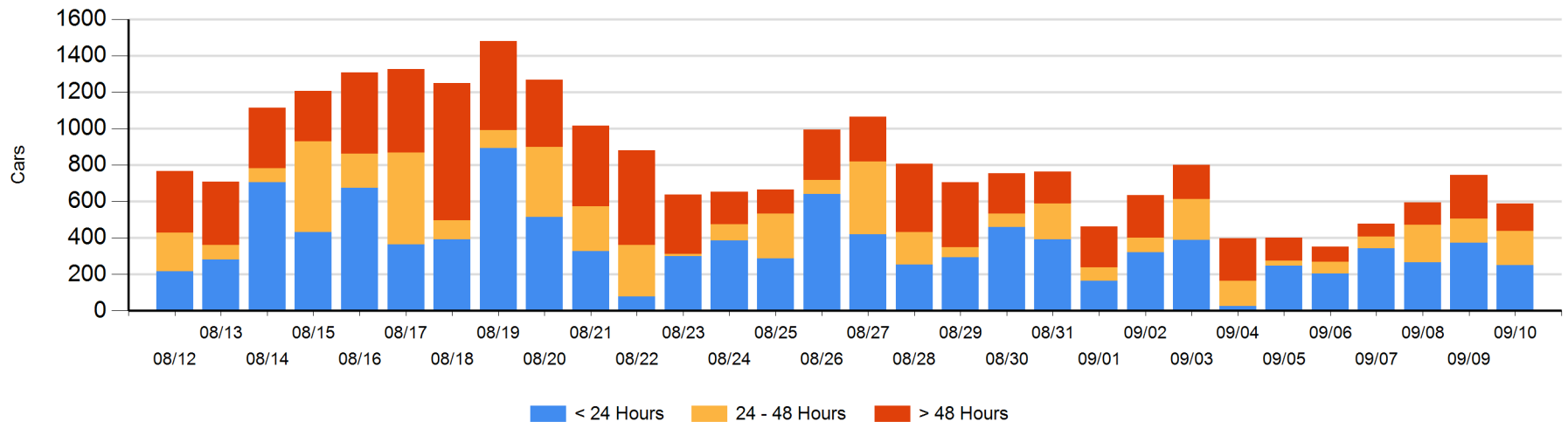
Today

	< 24 Hrs	24 - 48 Hrs	> 48-72 Hrs	> 72 Hrs	Total On Hand
CN	124	86		41	251
CP	127	99	30	78	334
SRY		3			3

Change in Last 24 Hours

	< 24 Hrs	24-48 Hrs	48 - 72 Hrs	> 72 Hrs
CN	-38	29	-28	11
CP	-80	21	-112	40
SRY	-3	3		

Loaded Cars on Hand Vancouver Waiting for Placement - Last 30 Days All Railways



Port Terminal Status

Prince Rupert

Daily Activity for 9/10/2019

	Cars Arrived	Cars Received in Interchange	Cars Delivered in Interchange	Cars Placed for Unloading	Loads on Wheels at Destination As of 9/10/2019
CN	109			103	1

Port Unloads

	09/10	09/09	Week To Date	Last Week
CN	202	91	293	1,040

Age Profile of Loaded Cars Waiting Placement for Unloading

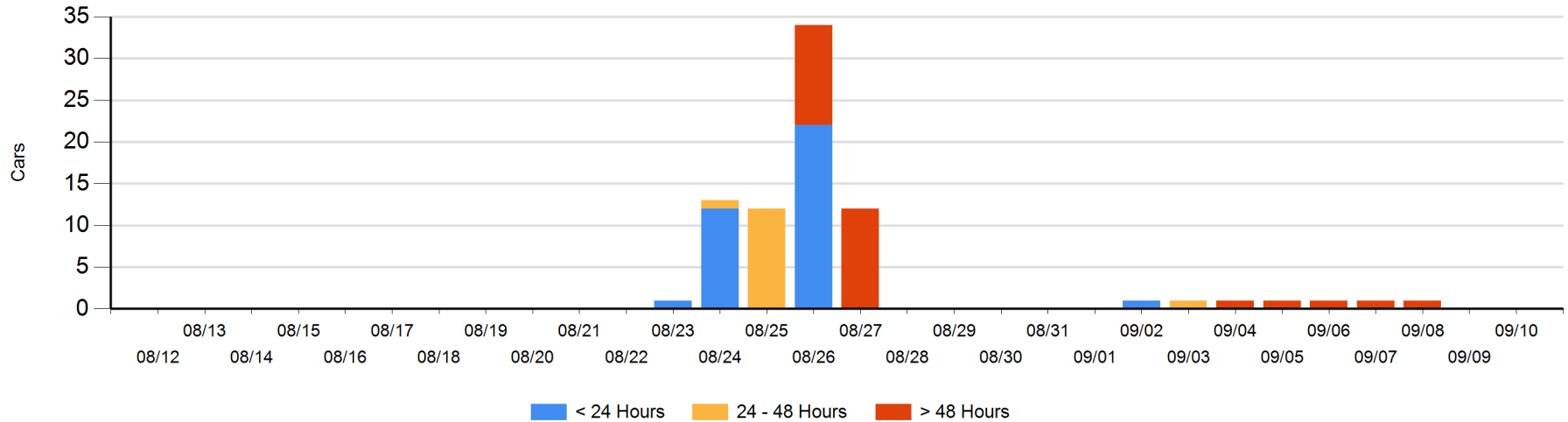
Today

	< 24 Hrs	24 - 48 Hrs	> 48-72 Hrs	> 72 Hrs	Total On Hand
CN					0

Change in Last 24 Hours

	< 24 Hrs	24-48 Hrs	48 - 72 Hrs	> 72 Hrs
CN				

Loaded Cars on Hand Prince Rupert Waiting for Placement - Last 30 Days All Railways



Port Terminal Status

Thunder Bay

Daily Activity for 9/10/2019

	Cars Arrived	Cars Received in Interchange	Cars Delivered in Interchange	Cars Placed for Unloading	Loads on Wheels at Destination As of 9/10/2019
CN				59	140
CP				151	132

Port Unloads

	09/10	09/09	Week To Date	Last Week
CN	131	104	235	517
CP	150	202	352	1,311

Age Profile of Loaded Cars Waiting Placement for Unloading

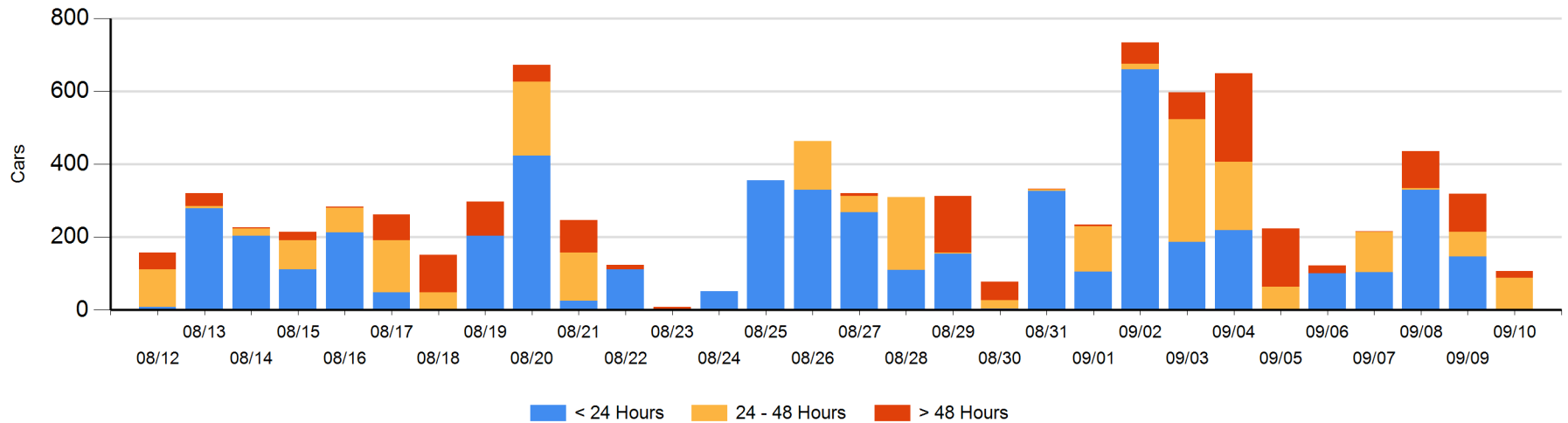
Today

	< 24 Hrs	24 - 48 Hrs	> 48-72 Hrs	> 72 Hrs	Total On Hand
CN					0
CP		88	14	4	106

Change in Last 24 Hours

	< 24 Hrs	24-48 Hrs	48 - 72 Hrs	> 72 Hrs
CN	-59			
CP	-88	21	10	-97

Loaded Cars on Hand Thunder Bay Waiting for Placement - Last 30 Days All Railways



Measurement Definitions

Loads on Wheels	<p>Count of loaded rail cars including all rail cars that have been released loaded at origin and have not been reported by the railway as unloaded at destination.</p> <p>Counts include all rail cars (hopper cars and boxcars) moving within a pipeline.</p>
Loads Not Moving	<p>Loaded rail cars for which the railways have not reported a movement event for 48 hours or more whether the rail car is at origin, enroute or at destination.</p>
Port Unloads	<p>Count of rail cars reported by railways as unloaded at the western port destinations of Vancouver, Prince Rupert and Thunder Bay.</p> <p>Unload counts include all rail cars (hopper cars and boxcars) unloaded by all receivers including major port terminals, transloaders and other receivers.</p>
Cars Arrived	<p>Count of rail cars reported as arrived at the destination railway terminal.</p>
Cars Received in Interchange	<p>Count of rail cars received in interchange by each railway within a destination railway terminal. Interchange activity is tracked for the Vancouver and Thunder Bay pipelines as applicable.</p>
Cars Delivered in Interchange	<p>Count of rail cars delivered in interchange by each railway within a destination railway terminal. Interchange activity is tracked for the Vancouver and Thunder Bay pipelines as applicable.</p>
Cars Placed for Unloading	<p>Count of rail cars reported by the railways as placed loaded at the receiver's facility for unloading.</p>
Loads on Wheels at Destination	<p>Count of rail cars that remain under load within the destination railway terminal including rail cars that have been reported as placed for unloading but not yet reported as unloaded.</p>
Waiting Placement for Unloading	<p>Count of rail cars that have been reported as arrived at the destination railway terminal but not reported as placed for unloading by the railway.</p> <p>For the Ports of Vancouver, Prince Rupert and Thunder Bay the count of rail cars waiting placement for unloading is categorized by age – i.e. the elapsed time from arrival at destination to the current report date.</p>