

## SPEED READ

- Loads on wheels increased slightly overnight, marking an increase in CN volumes offset by reduced CP volumes. On a net basis, volumes increased due to higher traffic in the Thunder Bay and E. Canada corridors offset by reduced traffic in the USA/MEX, Prince Rupert and Vancouver corridors.
- Network fluidity deteriorated overnight, led by a rise in idle car counts on CP by 18% (+36) offset by a decline in idle car counts on CN by 8% (-22). The total count of cars for 4+ days on both railways rose significantly by 73% (+111) overnight - currently at 264 cars.
- Three days in Week 6 unloads now ahead of prior week's performance by fewer than 200 unloads, reflecting improved week over week performance at Vancouver offset by reduced unloads at Prince Rupert and Thunder Bay.

---

## Loads on Wheels

- Loads on wheels increased slightly by (+30) overnight, due to higher traffic on CN offset by reduced volumes on CP - combined total at 6,261 and 8% below the trailing 30-day average.
- On a net basis, the increase in loads on wheels reflects higher traffic in the Thunder Bay and E. Canada corridors offset by reduced traffic in the USA/MEX, Prince Rupert and Vancouver corridors.
- CN volumes rose 14% (+369) overnight, with higher traffic in the Vancouver, Thunder Bay and E. Canada corridors offset by reduced volumes in the Prince Rupert and USA/MEX corridors. System wide CN loads on wheels currently at 2,914 and 9% below the trailing 30-day average.
- CP volumes declined significantly by 10% (-354) overnight and have now decreased for the third consecutive day, driven by a decline in traffic in the Vancouver and USA/MEX corridors offset by an increase in traffic in the E. Canada and Thunder Bay corridors. CP system wide loads on wheels now at 3,116 and 10% below the trailing 30-day average.
- Vancouver now at 3,668, fell marginally by 1% (-48) overnight, now 9% below the trailing 30-day average.
- The Prince Rupert pipeline now at 633, declined for the fourth consecutive day, down 8% (-56) overnight, and 28% below the trailing 30-day average.
- Thunder Bay volumes rose 18% (+136) overnight - now at 909 and 15% below the trailing 30-day average, with 69% of traffic moving on CP.

## Hopper Car Rationing

- No hopper cars were rationed by either CN or CP in week 5.

## Loads Not Moving

- **The count of cars not moving for 48+ hours rose 3% (+14) overnight, marking higher counts on CP offset by lower counts on CN. Idle car counts presently at 495 and 36% below the trailing 30-day average.**
- CN
  - **The count of idle cars for 48+ hours fell 8% (-22) overnight - now at 262 cars.**
  - The number of cars idle for 4+ days increased significantly by 191% (+105) overnight - now at 160 cars.
  - The count of cars not moving for 7+ days rose 21% (+4) overnight - now at 23 cars.
  - Vancouver represents 73% of all idle cars.
  - In total 68% of all idle cars are dwelling at origin locations.
- CP
  - **CP idle car counts for 48+ hours increased 18% (+36) overnight - now at 233 cars.**
  - The number of cars idle for 4+ days gained for the fourth consecutive day, up 6% (+6) overnight - now at 104 cars.

- The number of cars idle for 7+ days declined 61% (-20) overnight - presently at 13 cars.
- Vancouver accounts for 85% of all idle cars.
- In total 18% of all idle cars are dwelling at origin locations.

### **Port Performance**

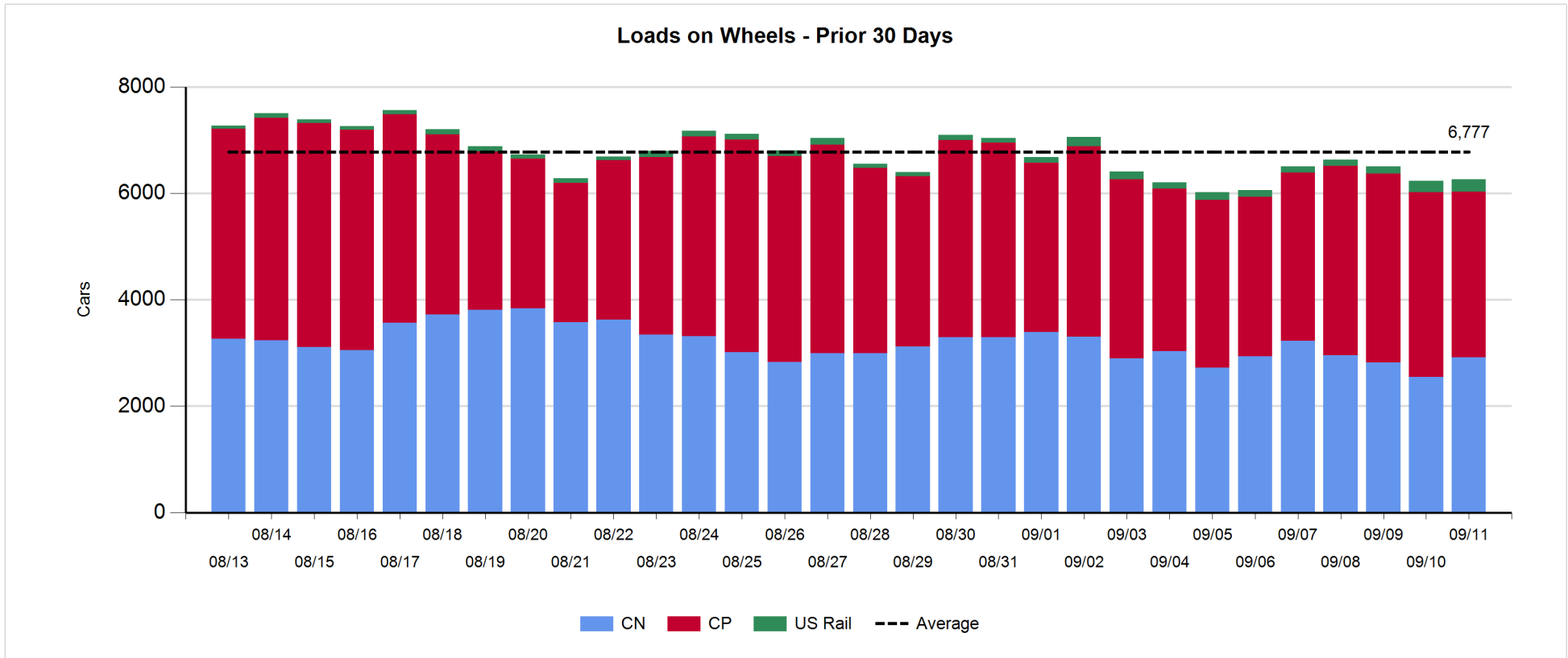
- CN and CP reported a total of 1,016 cars unloaded at the three major ports, now 6% above the trailing 30-day average. Three days in Week 6 unloads now ahead of last week's pace by fewer than 200 unloads, reflecting higher unloads at Vancouver offset by reduced unloads at Prince Rupert and Thunder Bay.
- Vancouver
  - 681 unloads reported by CN and CP at the Port of Vancouver; CN - 269 and CP - 412. Three days in Week 6 unloads are tracking ahead of last week's performance by 250 unloads.
  - There are 500 cars on site at Vancouver with 350 cars arriving at the port in the last 24 hours.
  - CN and CP have about 1,200 cars in British Columbia en route to Vancouver, with fewer than 550 cars at Kamloops and west, and 89% of traffic moving on CP.
- Prince Rupert
  - Prince Rupert reported 96 unloads, now behind last week's unloads after three days by more than 50 unloads.
  - Loads on wheels now below 1,000 cars - currently at 633 cars.
  - There are 50 cars west of Jasper en route to Prince Rupert.
  - There are fewer than 150 cars on site at Prince Rupert with more than 200 cars arriving at the port in the last 24 hours.
- Thunder Bay
  - 239 unloads were reported at Thunder Bay yesterday. Three days in Week 6 unloads are tracking behind last week's pace by 12 unloads.
  - There are more than 150 cars on site at Thunder Bay with 150 cars arriving at the port in the prior 24 hours.
  - There are 150 cars en route to Thunder Bay from Winnipeg and east.

**Daily Loads on Wheels - 9/11/2019**

	E Canada	Prince Rupert	Thunder Bay	USA/MEX	Vancouver	Total
CN	243	633	278	139	1,621	2,914
CP	161		631	290	2,034	3,116
Short Line	16				13	29
US Rail				202		202
	420	633	909	631	3,668	6,261

**Change in Loads on Wheels - Prior 24 Hours**

	E Canada	Prince Rupert	Thunder Bay	USA/MEX	Vancouver	Total
CN	34	-56	113	-27	305	369
CP	25		23	-67	-335	-354
Short Line	0				-18	-18
US Rail				33		33
	59	-56	136	-61	-48	30

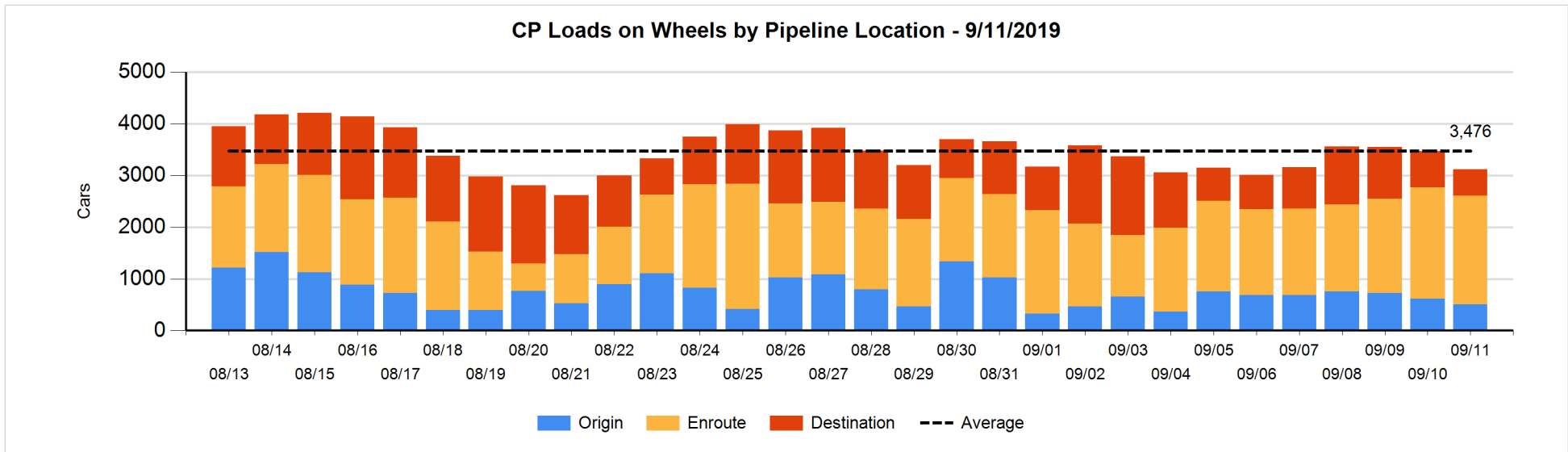
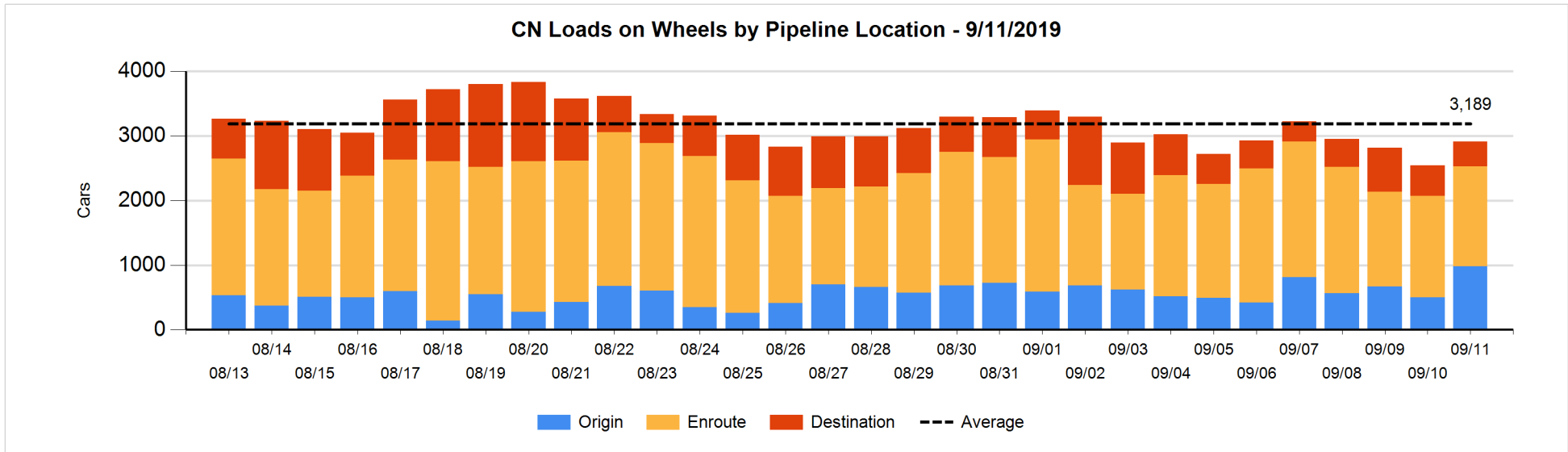


**Daily Loads on Wheels By Pipeline Location - 9/11/2019**

	E Canada	Prince Rupert	Thunder Bay	USA/MEX	Vancouver	Total
CN						
Origin	3	22	99	10	846	980
Enroute	184	478	159	107	618	1,546
Destination	56	133	20	22	157	388
	243	633	278	139	1,621	2,914
CP						
Origin	31		257	29	186	503
Enroute	130		222	236	1,513	2,101
Destination			152	25	335	512
	161		631	290	2,034	3,116
US Rail / Short Line						
Origin						
Enroute	8			150		158
Destination	8			52	13	73
	16			202	13	231

**Change in Daily Loads on Wheels By Pipeline Location - Prior 24 Hours**

	E Canada	Prince Rupert	Thunder Bay	USA/MEX	Vancouver	Total
CN						
Origin	0	-61	99	-19	458	477
Enroute	18	-127	134	3	-47	-19
Destination	16	132	-120	-11	-106	-89
	34	-56	113	-27	305	369
CP						
Origin	28		31	-72	-103	-116
Enroute	-3		-28	-9	-11	-51
Destination			20	14	-221	-187
	25		23	-67	-335	-354
US Rail / Short Line						
Origin						
Enroute	-5			31		26
Destination	5			2	-18	-11
	0			33	-18	15

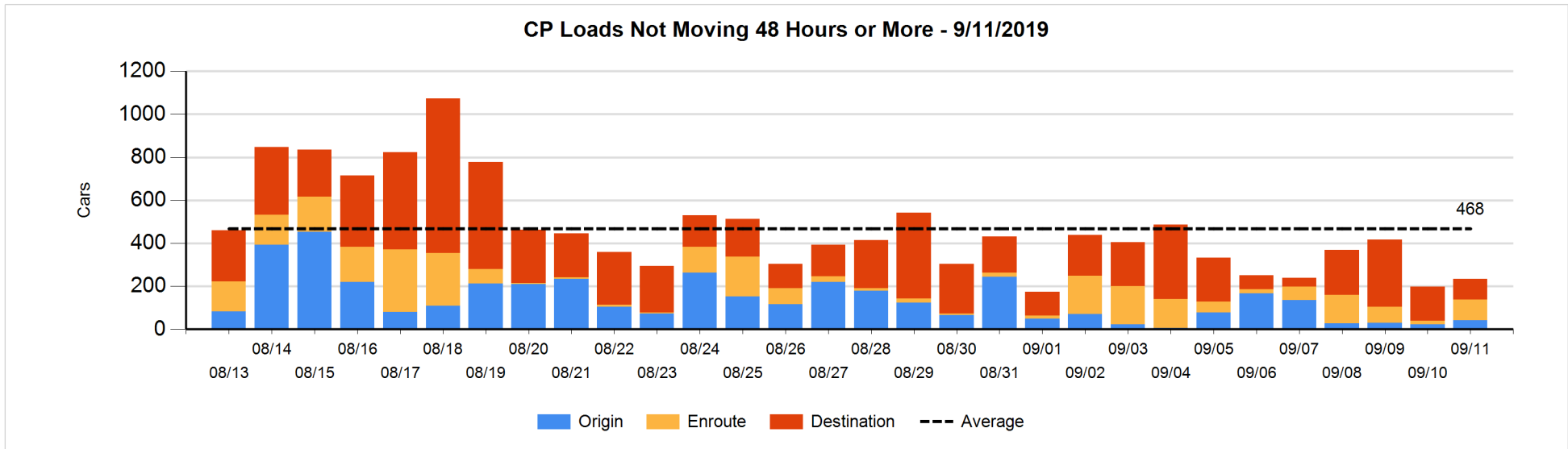
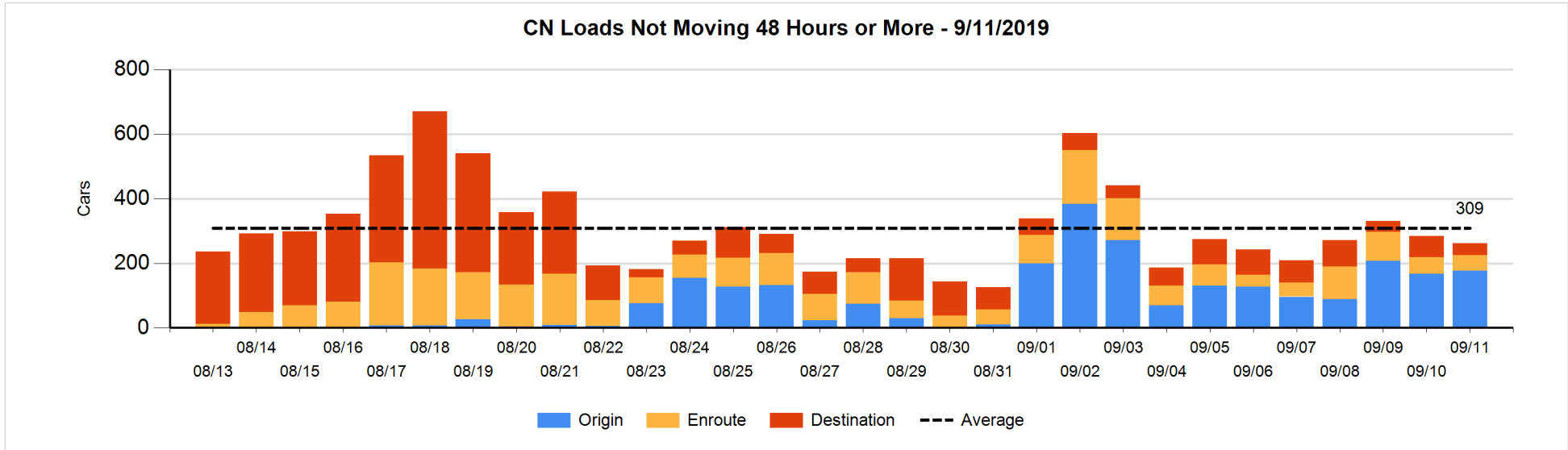


**Loads Not Moving 48 Hours or More - 9/11/2019**

	E Canada	Prince Rupert	Thunder Bay	USA/MEX	Vancouver	Total
<b>CN</b>						
Origin	3			2	172	177
Enroute	20	7		2	19	48
Destination	25			11	1	37
	48	7		15	192	262
<b>CP</b>						
Origin	1		6		36	43
Enroute	8			8	78	94
Destination			12		84	96
	9		18	8	198	233
<b>US Rail / Short Line</b>						
Origin						
Enroute				12		12
Destination	3			27	4	34
	3			39	4	46

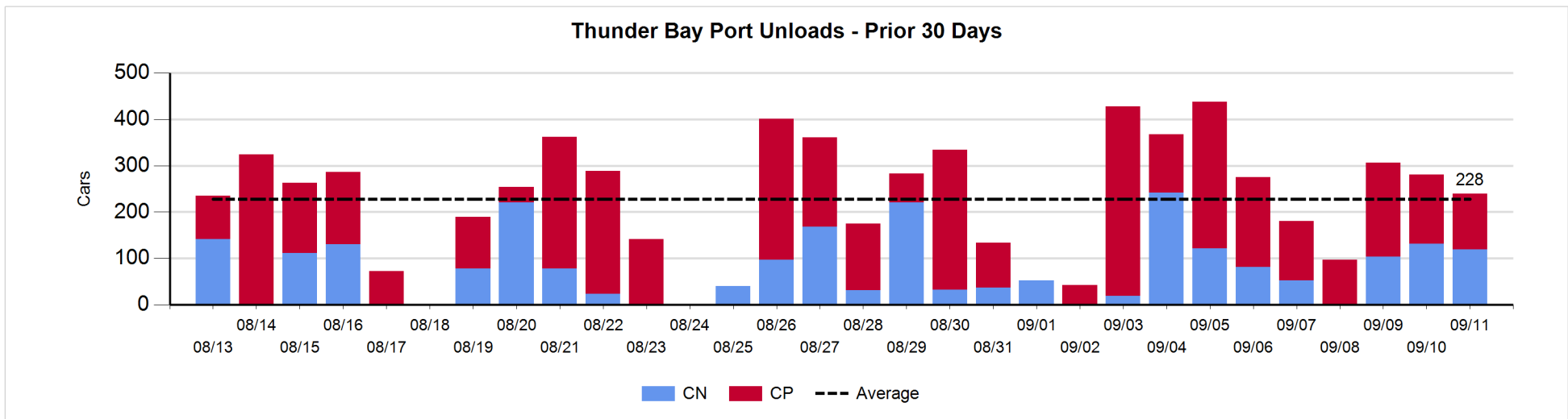
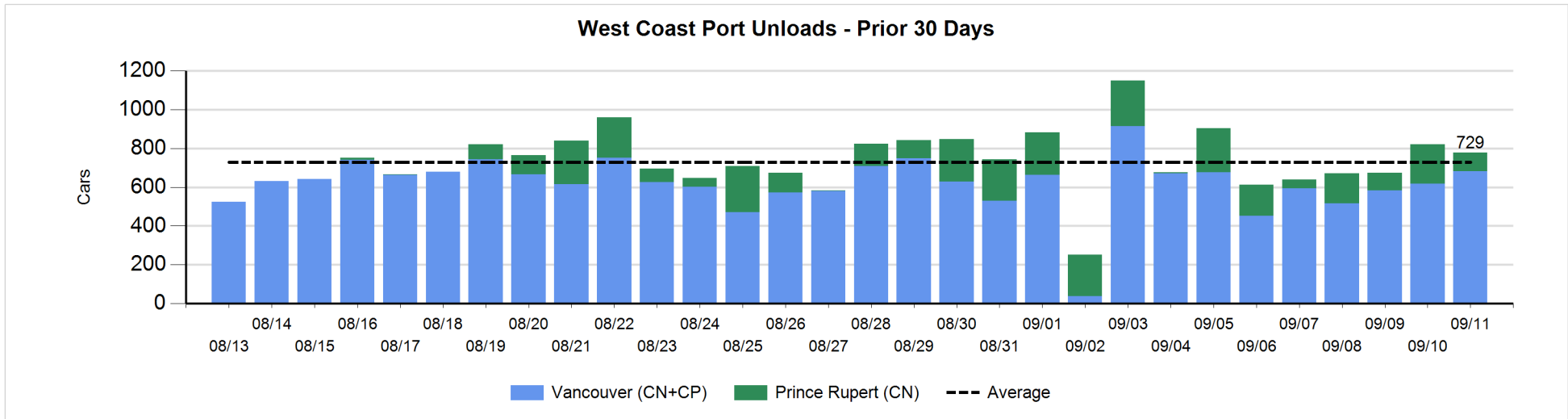
**Change in Loads Not Moving 48 Hours or More - 9/11/2019**

	E Canada	Prince Rupert	Thunder Bay	USA/MEX	Vancouver	Total
<b>CN</b>						
Origin	3			0	6	9
Enroute	-2	4		1	-5	-2
Destination	3	-1	-32	4	-3	-29
	4	3	-32	5	-2	-22
<b>CP</b>						
Origin	0		6		14	20
Enroute	6			1	71	78
Destination			-23	-11	-28	-62
	6		-17	-10	57	36
<b>US Rail / Short Line</b>						
Origin						
Enroute				0		0
Destination	1			-3	-20	-22
	1			-3	-20	-22



Port Unloads - 9/11/2019

	Prince Rupert	Vancouver	West Coast Total	Thunder Bay	Total
CN	96	269	365	119	484
CP		412	412	120	532
	96	681	777	239	1,016





**Port Terminal Status**

**Vancouver**

Daily Activity for 9/11/2019

	Cars Arrived	Cars Received in Interchange	Cars Delivered in Interchange	Cars Placed for Unloading	Loads on Wheels at Destination As of 9/11/2019
CN	116	111	62	313	157
CP	236	62	111	232	335
SRY	1			19	13

**Port Unloads**

	09/11	09/10	Week To Date	Last Week
CN	269	274	771	1,258
CP	412	344	1,111	2,603
SRY	19	9	34	63

**Age Profile of Loaded Cars Waiting Placement for Unloading**

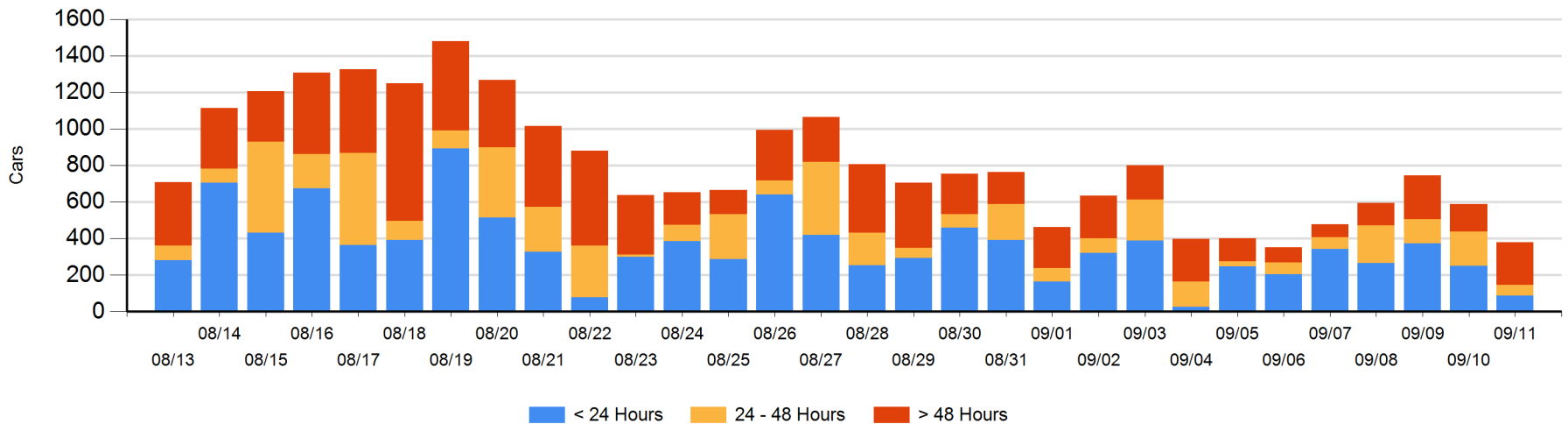
**Today**

	< 24 Hrs	24 - 48 Hrs	> 48-72 Hrs	> 72 Hrs	Total On Hand
CN	69	12	48	18	147
CP	17	49	93	72	231
SRY			3		3

**Change in Last 24 Hours**

	< 24 Hrs	24-48 Hrs	48 - 72 Hrs	> 72 Hrs
CN	-55	-74	48	-23
CP	-110	-50	63	-6
SRY		-3	3	

**Loaded Cars on Hand Vancouver Waiting for Placement - Last 30 Days All Railways**



**Port Terminal Status**

**Prince Rupert**

**Daily Activity for 9/11/2019**

	Cars Arrived	Cars Received in Interchange	Cars Delivered in Interchange	Cars Placed for Unloading	Loads on Wheels at Destination As of 9/11/2019
CN	228			227	133

**Port Unloads**

	09/11	09/10	Week To Date	Last Week
CN	96	202	389	1,040

**Age Profile of Loaded Cars Waiting Placement for Unloading**

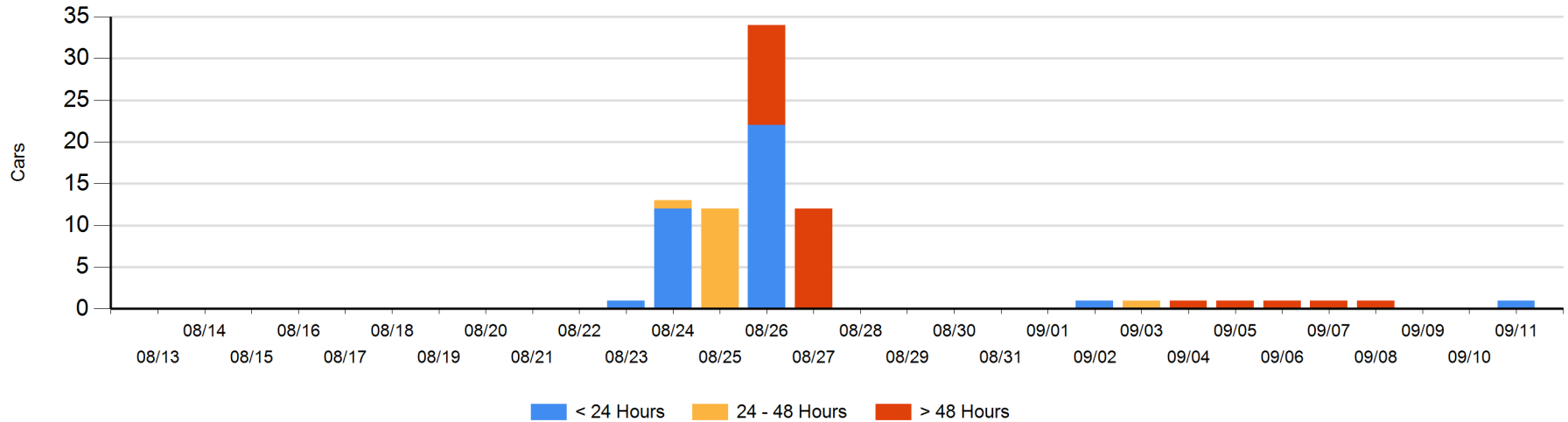
**Today**

	< 24 Hrs	24 - 48 Hrs	> 48-72 Hrs	> 72 Hrs	Total On Hand
CN	1				1

**Change in Last 24 Hours**

	< 24 Hrs	24-48 Hrs	48 - 72 Hrs	> 72 Hrs
CN	1			

**Loaded Cars on Hand Prince Rupert Waiting for Placement - Last 30 Days All Railways**



**Port Terminal Status**

**Thunder Bay**

Daily Activity for 9/11/2019

	Cars Arrived	Cars Received in Interchange	Cars Delivered in Interchange	Cars Placed for Unloading	Loads on Wheels at Destination As of 9/11/2019
CN					20
CP	140			94	152

**Port Unloads**

	09/11	09/10	Week To Date	Last Week
CN	119	131	354	517
CP	120	150	472	1,311

**Age Profile of Loaded Cars Waiting Placement for Unloading**

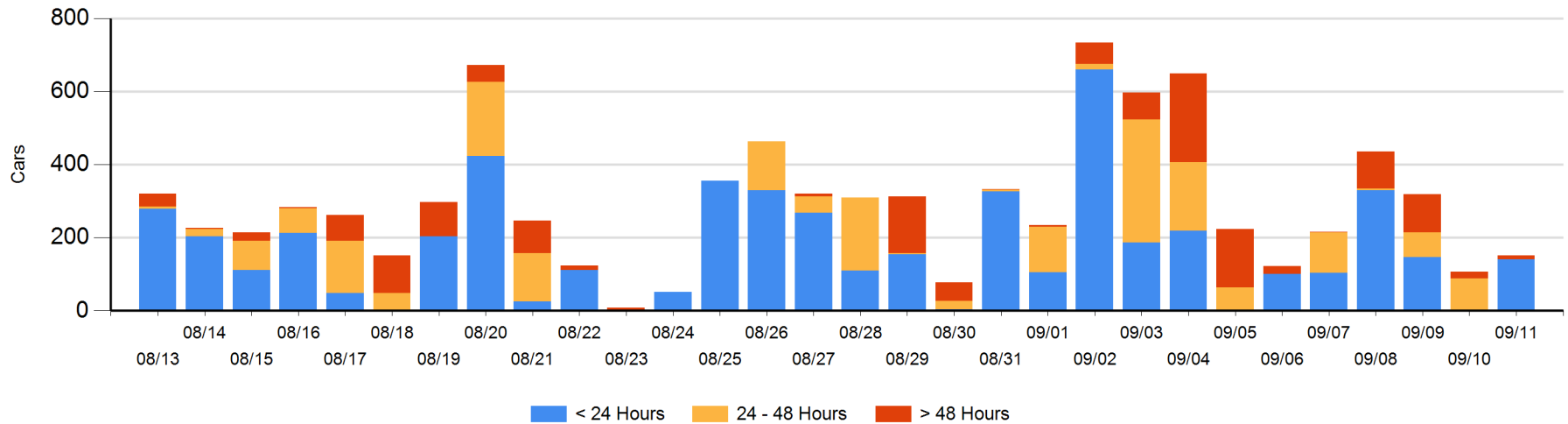
**Today**

	< 24 Hrs	24 - 48 Hrs	> 48-72 Hrs	> 72 Hrs	Total On Hand
CN					0
CP	140		8	4	152

**Change in Last 24 Hours**

	< 24 Hrs	24-48 Hrs	48 - 72 Hrs	> 72 Hrs
CN				
CP	140	-88	-6	0

**Loaded Cars on Hand Thunder Bay Waiting for Placement - Last 30 Days All Railways**



## Measurement Definitions

Loads on Wheels	<p>Count of loaded rail cars including all rail cars that have been released loaded at origin and have not been reported by the railway as unloaded at destination.</p> <p>Counts include all rail cars (hopper cars and boxcars) moving within a pipeline.</p>
Loads Not Moving	<p>Loaded rail cars for which the railways have not reported a movement event for 48 hours or more whether the rail car is at origin, enroute or at destination.</p>
Port Unloads	<p>Count of rail cars reported by railways as unloaded at the western port destinations of Vancouver, Prince Rupert and Thunder Bay.</p> <p>Unload counts include all rail cars (hopper cars and boxcars) unloaded by all receivers including major port terminals, transloaders and other receivers.</p>
Cars Arrived	<p>Count of rail cars reported as arrived at the destination railway terminal.</p>
Cars Received in Interchange	<p>Count of rail cars received in interchange by each railway within a destination railway terminal. Interchange activity is tracked for the Vancouver and Thunder Bay pipelines as applicable.</p>
Cars Delivered in Interchange	<p>Count of rail cars delivered in interchange by each railway within a destination railway terminal. Interchange activity is tracked for the Vancouver and Thunder Bay pipelines as applicable.</p>
Cars Placed for Unloading	<p>Count of rail cars reported by the railways as placed loaded at the receiver's facility for unloading.</p>
Loads on Wheels at Destination	<p>Count of rail cars that remain under load within the destination railway terminal including rail cars that have been reported as placed for unloading but not yet reported as unloaded.</p>
Waiting Placement for Unloading	<p>Count of rail cars that have been reported as arrived at the destination railway terminal but not reported as placed for unloading by the railway.</p> <p>For the Ports of Vancouver, Prince Rupert and Thunder Bay the count of rail cars waiting placement for unloading is categorized by age – i.e. the elapsed time from arrival at destination to the current report date.</p>