

## SPEED READ

- Loads on wheels increased overnight, reflecting a rise in CN volumes offset by lower CP volumes. On a net basis, volumes increased due to higher volumes in the Vancouver and Prince Rupert corridors offset by lower volumes in the E. Canada, USA/MEX and Thunder Bay corridors.
- Network fluidity improved overnight, led by a decline in idle car counts on both CN and CP by 37% (-97) and 12% (-28), respectively. The total count of cars for 4+ days on both railways decreased 19% (-50) overnight - now at 214 cars.
- Four days in Week 6 unloads now behind prior week's performance by 500 unloads, marking lower unloads across all three major ports - Vancouver, Thunder Bay and Prince Rupert.

---

## Loads on Wheels

- Loads on wheels increased 3% (+192) overnight, due to higher volumes on CN offset by lower volumes on CP - combined total at 6,564 and 3% below the trailing 30-day average.
- On a net basis, the rise in loads on wheels indicates higher volumes in the Vancouver and Prince Rupert corridors offset by lower volumes in the E. Canada, USA/MEX and Thunder Bay corridors.
- CN volumes rose 11% (+308) overnight, with higher volumes in the Vancouver, Prince Rupert and USA/MEX corridors offset by lower volumes in the Thunder Bay and E. Canada corridors. System wide CN loads on wheels presently at 3,223 and 1% above the trailing 30-day average.
- CP volumes fell 3% (-86) overnight and have now decreased for the fourth consecutive day, driven by a decline in volumes in the E. Canada and USA/MEX corridors offset by a rise in volumes in the Vancouver and Thunder Bay corridors. CP system wide loads on wheels now at 3,140 and 9% below the trailing 30-day average.
- Vancouver now at 3,939, increased 6% (+214) overnight and have now increased for the third consecutive day, now 2% below the trailing 30-day average.
- The Prince Rupert pipeline now at 757, increased 20% (+124) overnight, and 14% below the trailing 30-day average.
- Thunder Bay volumes declined 2% (-17) overnight - presently at 946 and 10% below the trailing 30-day average, with 73% of traffic moving on CP.

## Hopper Car Rationing

- No hopper cars were rationed by either CN or CP in week 5.

## Loads Not Moving

- **The count of cars not moving for 48+ hours declined 25% (-125) overnight, reflecting lower counts on both CN and CP. Idle car counts presently at 371, the lowest seen in the last 30 days, and 52% below the trailing 30-day average.**
- CN
  - **The count of idle cars for 48+ hours declined 37% (-97) overnight and have now decreased for the third consecutive day - now at 165 cars.**
  - The number of cars idle for 4+ days declined 28% (-45) overnight - now at 115 cars.
  - The count of cars not moving for 7+ days increased 35% (+8) overnight - now at 31 cars.
  - Vancouver represents 56% of all idle cars.
  - In total 43% of all idle cars are dwelling at origin locations.
- CP
  - **CP idle car counts for 48+ hours decreased 12% (-28) overnight - presently at 206 cars.**
  - The number of cars idle for 4+ days fell 5% (-5) overnight - now at 99 cars.

- The number of cars idle for 7+ days increased (+21) overnight - now at 34 cars.
- Vancouver accounts for 83% of all idle cars.
- In total 27% of all idle cars are dwelling at origin locations.

### **Port Performance**

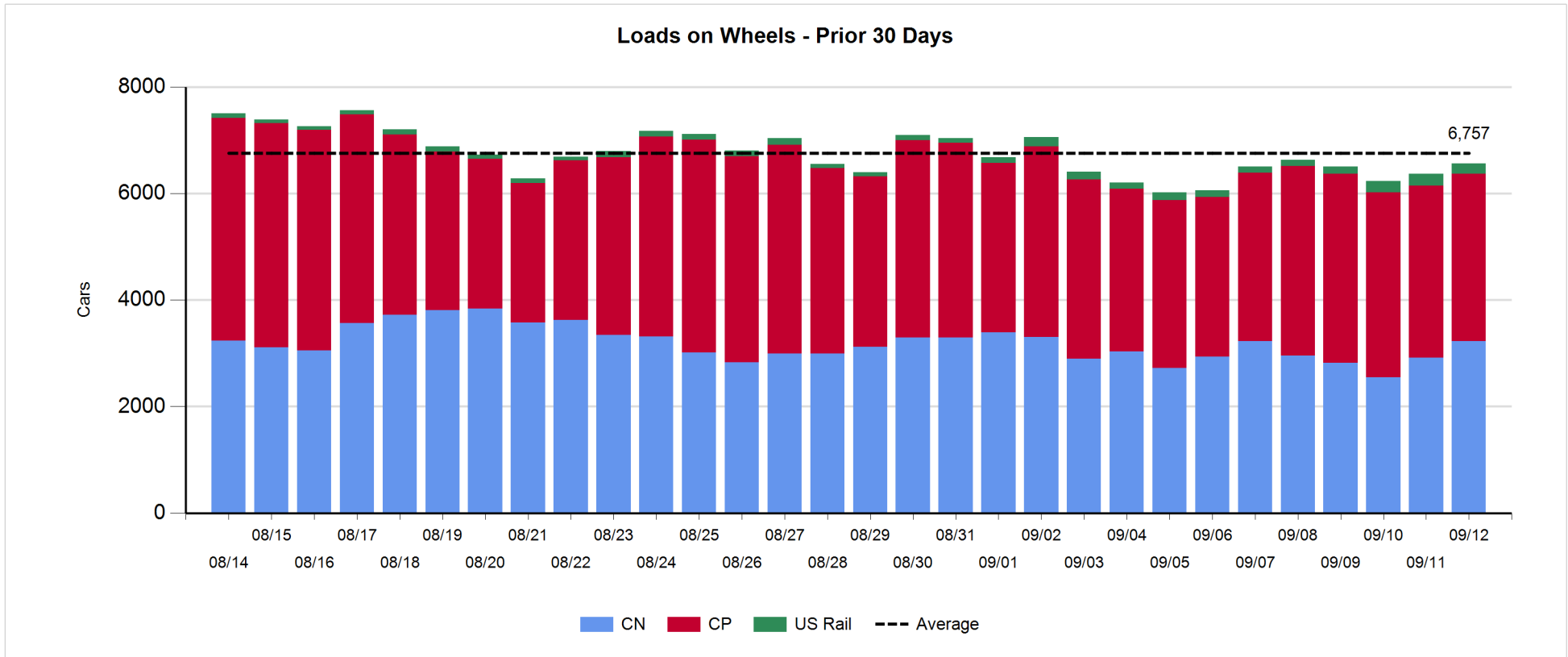
- CN and CP reported a total of 675 cars unloaded at the three major ports, now 29% below the trailing 30-day average. Four days in Week 6 unloads now behind last week's pace by 500 unloads, marking lower unloads across all three major ports - Vancouver, Thunder Bay and Prince Rupert.
- Vancouver
  - 411 unloads reported by CN and CP at the Port of Vancouver; CN - 108 and CP - 303. Four days in Week 6 unloads are tracking behind last week's performance by 12 unloads.
  - There are more than 1,150 cars on site at Vancouver with more than 1,000 cars arriving at the port in the last 24 hours.
  - CN and CP have more than 450 cars in British Columbia en route to Vancouver, with 250 cars at Kamloops and west, and 50% of traffic moving on CP.
- Prince Rupert
  - Prince Rupert reported 135 unloads, now behind last week's unloads after four days by 150 unloads.
  - Loads on wheels now below 1,000 cars - presently at 757 cars.
  - There are more than 200 cars west of Jasper en route to Prince Rupert.
  - There are zero cars on site at Prince Rupert with 3 cars arriving at the port in the last 24 hours.
- Thunder Bay
  - 129 unloads were reported at Thunder Bay yesterday. Four days in Week 6 unloads are tracking behind last week's pace by more than 300 unloads.
  - There are 300 cars on site at Thunder Bay with 250 cars arriving at the port in the prior 24 hours.
  - There are nearly 200 cars en route to Thunder Bay from Winnipeg and east.

**Daily Loads on Wheels - 9/12/2019**

	E Canada	Prince Rupert	Thunder Bay	USA/MEX	Vancouver	Total
CN	237	757	258	157	1,814	3,223
CP	91		688	244	2,117	3,140
Short Line	11				8	19
US Rail				182		182
	339	757	946	583	3,939	6,564

**Change in Loads on Wheels - Prior 24 Hours**

	E Canada	Prince Rupert	Thunder Bay	USA/MEX	Vancouver	Total
CN	-6	124	-20	18	192	308
CP	-70		3	-46	27	-86
Short Line	-5				-5	-10
US Rail				-20		-20
	-81	124	-17	-48	214	192

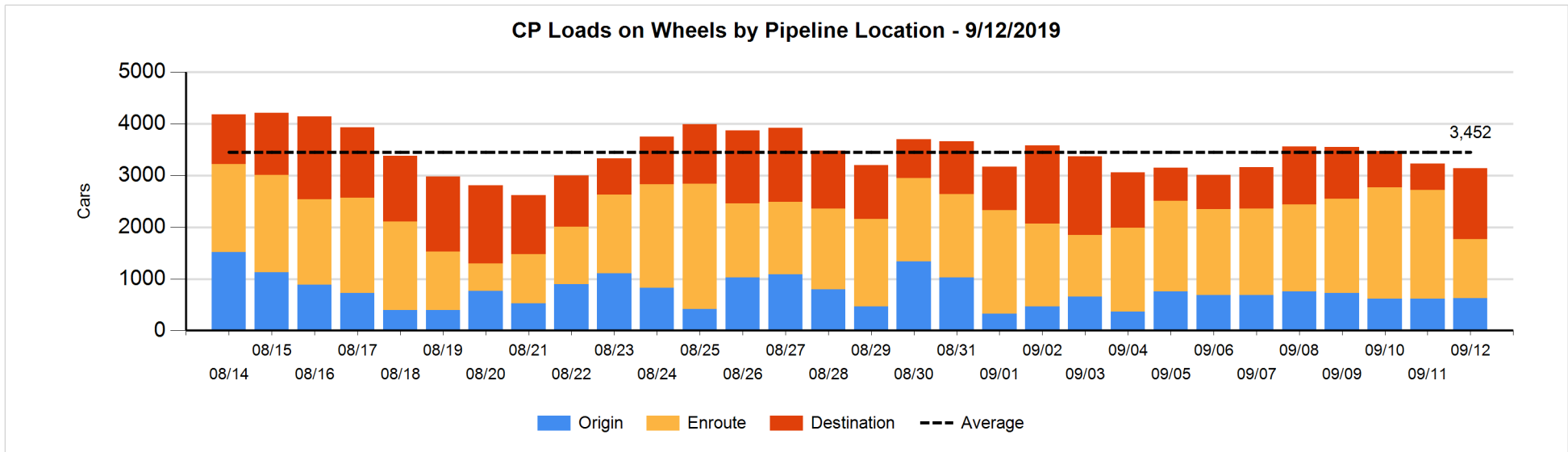
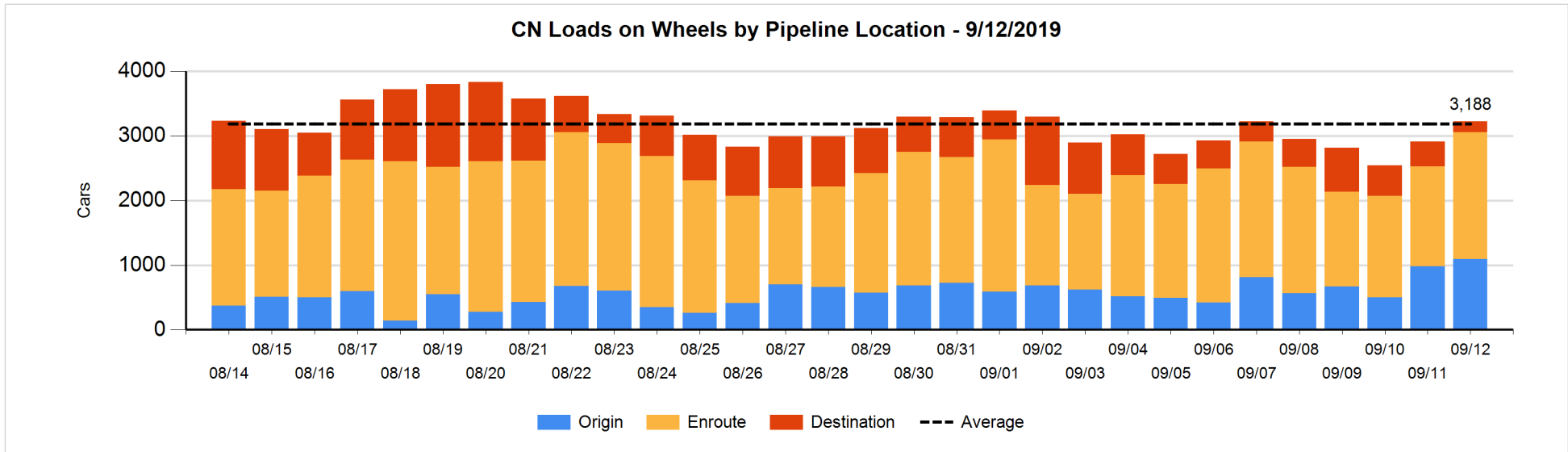


**Daily Loads on Wheels By Pipeline Location - 9/12/2019**

	E Canada	Prince Rupert	Thunder Bay	USA/MEX	Vancouver	Total
CN						
Origin	5	281		36	774	1,096
Enroute	185	476	234	107	955	1,957
Destination	47		24	14	85	170
	237	757	258	157	1,814	3,223
CP						
Origin	5		143	33	440	621
Enroute	85		276	186	598	1,145
Destination	1		269	25	1,079	1,374
	91		688	244	2,117	3,140
US Rail / Short Line						
Origin						
Enroute				104		104
Destination	11			78	8	97
	11			182	8	201

**Change in Daily Loads on Wheels By Pipeline Location - Prior 24 Hours**

	E Canada	Prince Rupert	Thunder Bay	USA/MEX	Vancouver	Total
CN						
Origin	2	259	-99	26	-72	116
Enroute	1	-2	75	0	336	410
Destination	-9	-133	4	-8	-72	-218
	-6	124	-20	18	192	308
CP						
Origin	-26		-168	4	199	9
Enroute	-45		54	-50	-916	-957
Destination	1		117	0	744	862
	-70		3	-46	27	-86
US Rail / Short Line						
Origin						
Enroute	-8			-46		-54
Destination	3			26	-5	24
	-5			-20	-5	-30

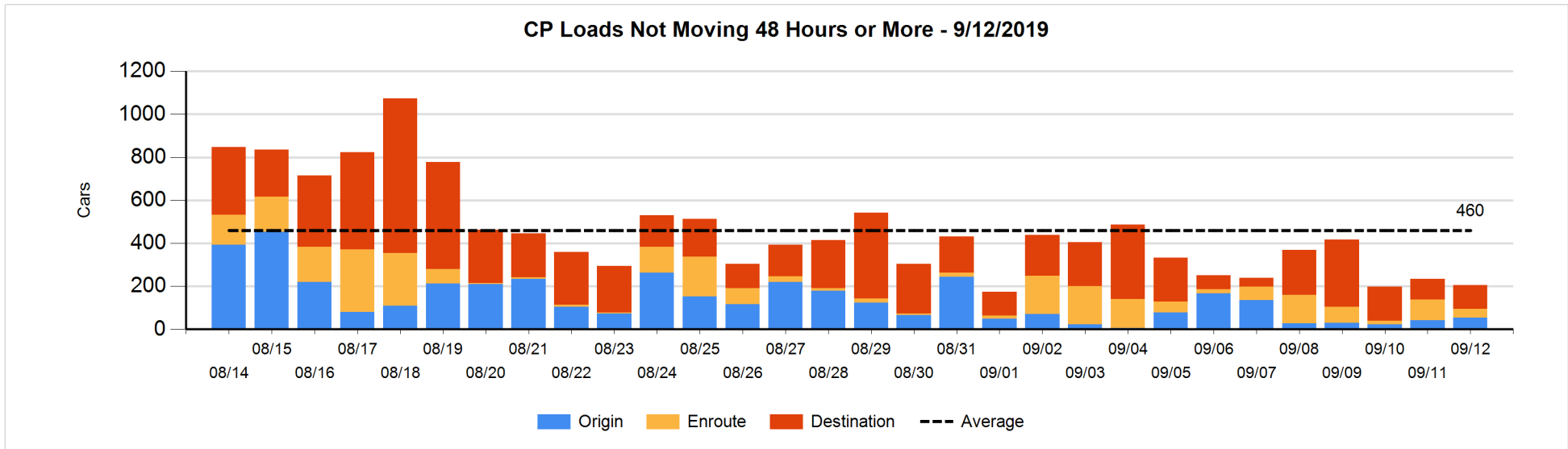
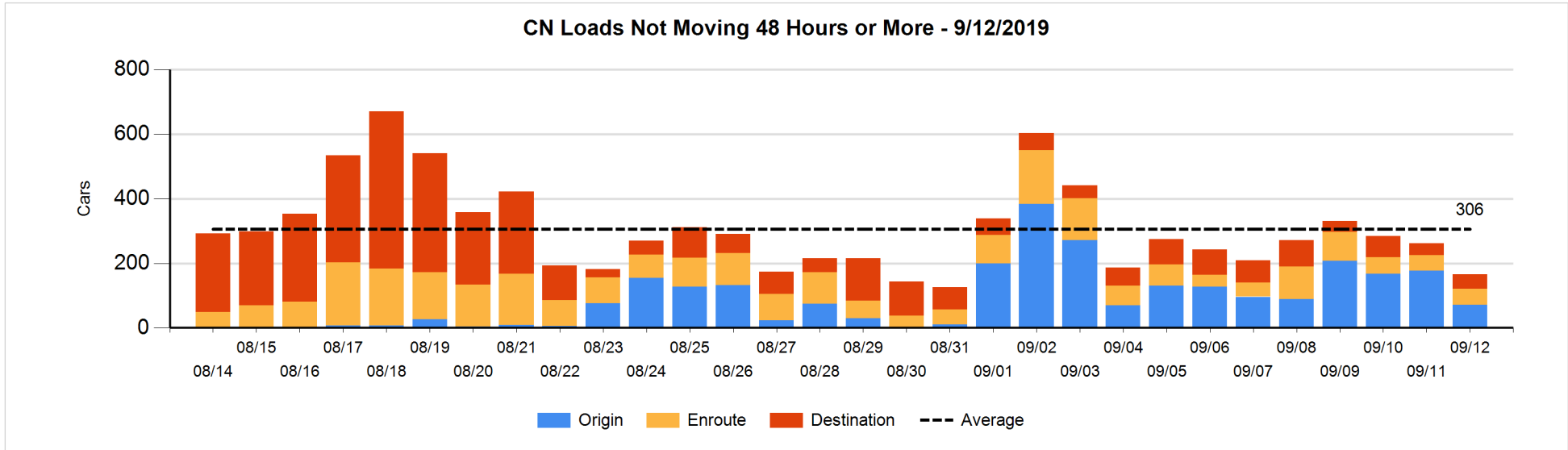


**Loads Not Moving 48 Hours or More - 9/12/2019**

	E Canada	Prince Rupert	Thunder Bay	USA/MEX	Vancouver	Total
<b>CN</b>						
Origin				2	69	71
Enroute	21	7		3	19	50
Destination	27			13	4	44
	48	7		18	92	165
<b>CP</b>						
Origin	1				54	55
Enroute	1			32	6	39
Destination					112	112
	2			32	172	206
<b>US Rail / Short Line</b>						
Origin						
Enroute				11		11
Destination	3			28	6	37
	3			39	6	48

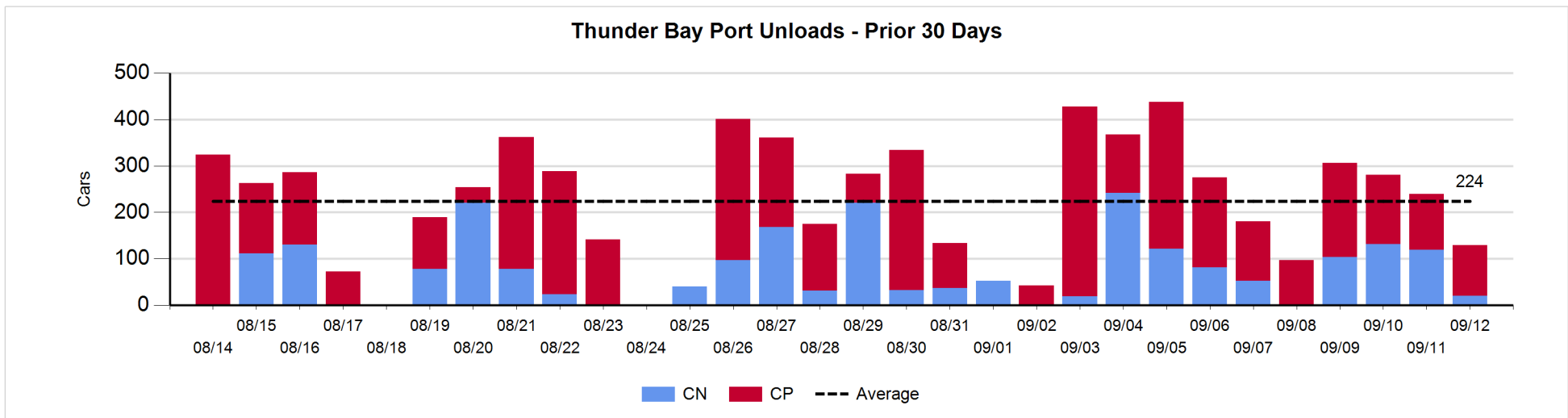
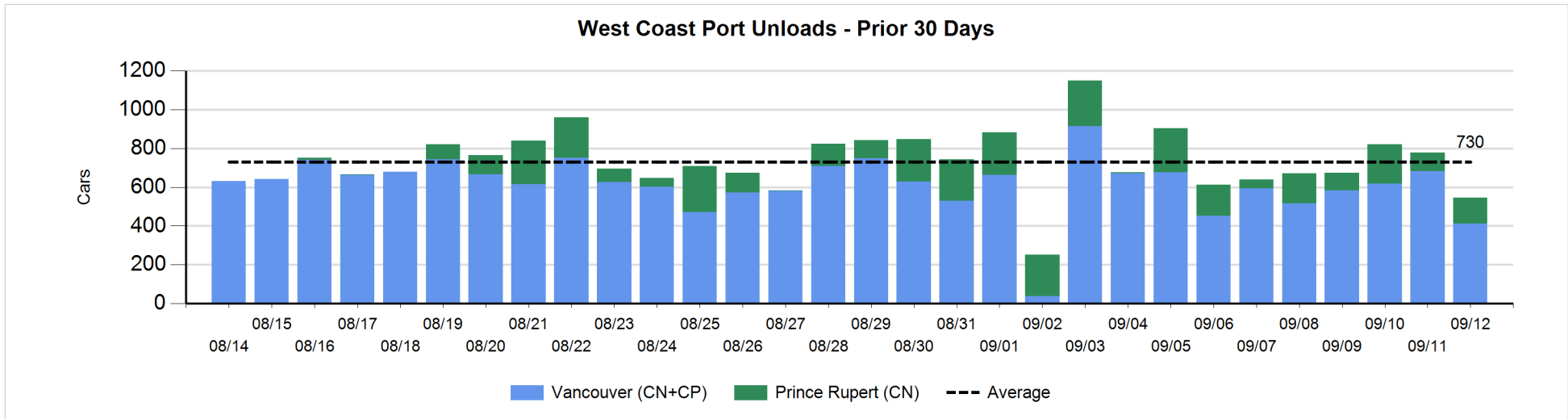
**Change in Loads Not Moving 48 Hours or More - 9/12/2019**

	E Canada	Prince Rupert	Thunder Bay	USA/MEX	Vancouver	Total
<b>CN</b>						
Origin	-3			0	-103	-106
Enroute	1	0		1	0	2
Destination	2			2	3	7
	0	0		3	-100	-97
<b>CP</b>						
Origin	0		-6		18	12
Enroute	-7			24	-73	-56
Destination			-12		28	16
	-7		-18	24	-27	-28
<b>US Rail / Short Line</b>						
Origin						
Enroute				-1		-1
Destination	0			1	2	3
	0			0	2	2



Port Unloads - 9/12/2019

	Prince Rupert	Vancouver	West Coast Total	Thunder Bay	Total
CN	135	108	243	20	263
CP		303	303	109	412
	135	411	546	129	675





**Port Terminal Status**

**Vancouver**

Daily Activity for 9/12/2019

	Cars Arrived	Cars Received in Interchange	Cars Delivered in Interchange	Cars Placed for Unloading	Loads on Wheels at Destination As of 9/12/2019
CN	32	11		58	85
CP	1,050		22	509	1,079
SRY		11		5	8

**Port Unloads**

	09/12	09/11	Week To Date	Last Week
CN	108	269	879	1,258
CP	303	412	1,414	2,603
SRY	5	19	39	63

**Age Profile of Loaded Cars Waiting Placement for Unloading**

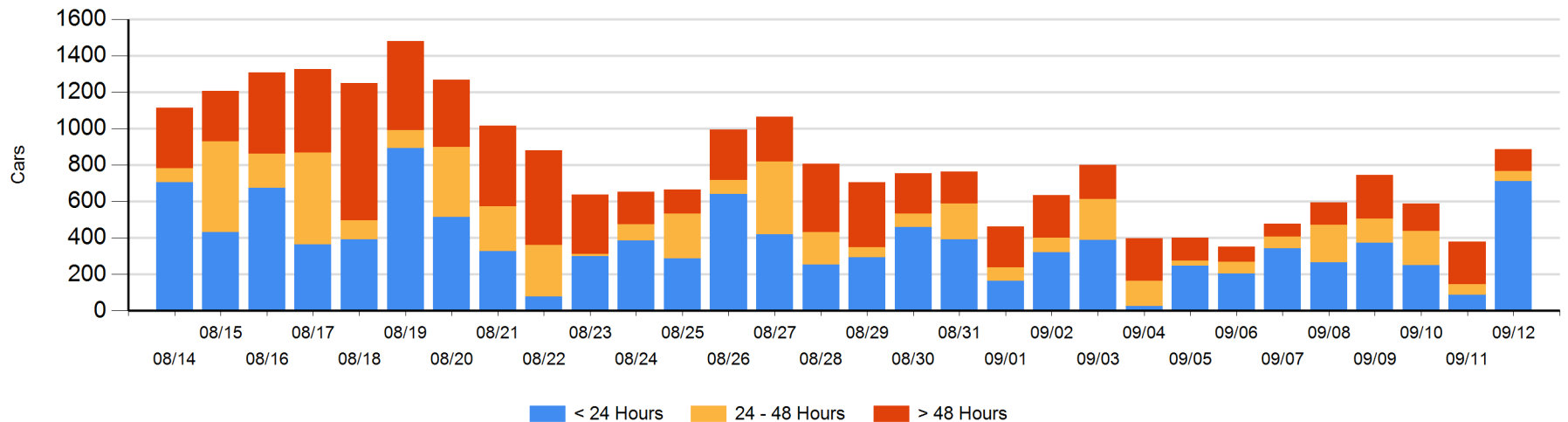
**Today**

	< 24 Hrs	24 - 48 Hrs	> 48-72 Hrs	> 72 Hrs	Total On Hand
CN	32	39	2		73
CP	679	17	49	67	812
SRY				3	3

**Change in Last 24 Hours**

	< 24 Hrs	24-48 Hrs	48 - 72 Hrs	> 72 Hrs
CN	-37	27	-46	-18
CP	662	-32	-44	-5
SRY			-3	3

**Loaded Cars on Hand Vancouver Waiting for Placement - Last 30 Days All Railways**



**Port Terminal Status**

**Prince Rupert**

Daily Activity for 9/12/2019

	Cars Arrived	Cars Received in Interchange	Cars Delivered in Interchange	Cars Placed for Unloading	Loads on Wheels at Destination As of 9/12/2019
CN		3		3	

**Port Unloads**

	09/12	09/11	Week To Date	Last Week
CN	135	96	524	1,040

**Age Profile of Loaded Cars Waiting Placement for Unloading**

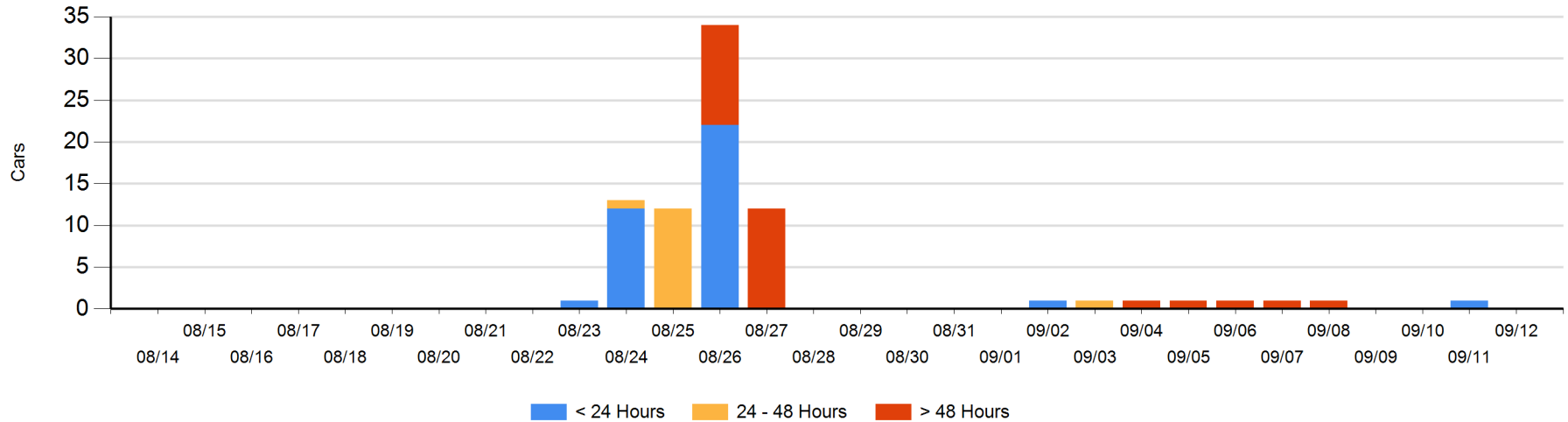
**Today**

	< 24 Hrs	24 - 48 Hrs	> 48-72 Hrs	> 72 Hrs	Total On Hand
CN					0

**Change in Last 24 Hours**

	< 24 Hrs	24-48 Hrs	48 - 72 Hrs	> 72 Hrs
CN	-1			

Loaded Cars on Hand Prince Rupert Waiting for Placement - Last 30 Days All Railways



**Port Terminal Status**

**Thunder Bay**

Daily Activity for 9/12/2019

	Cars Arrived	Cars Received in Interchange	Cars Delivered in Interchange	Cars Placed for Unloading	Loads on Wheels at Destination As of 9/12/2019
CN	24			24	24
CP	226			109	269

**Port Unloads**

	09/12	09/11	Week To Date	Last Week
CN	20	119	374	517
CP	109	120	581	1,311

**Age Profile of Loaded Cars Waiting Placement for Unloading**

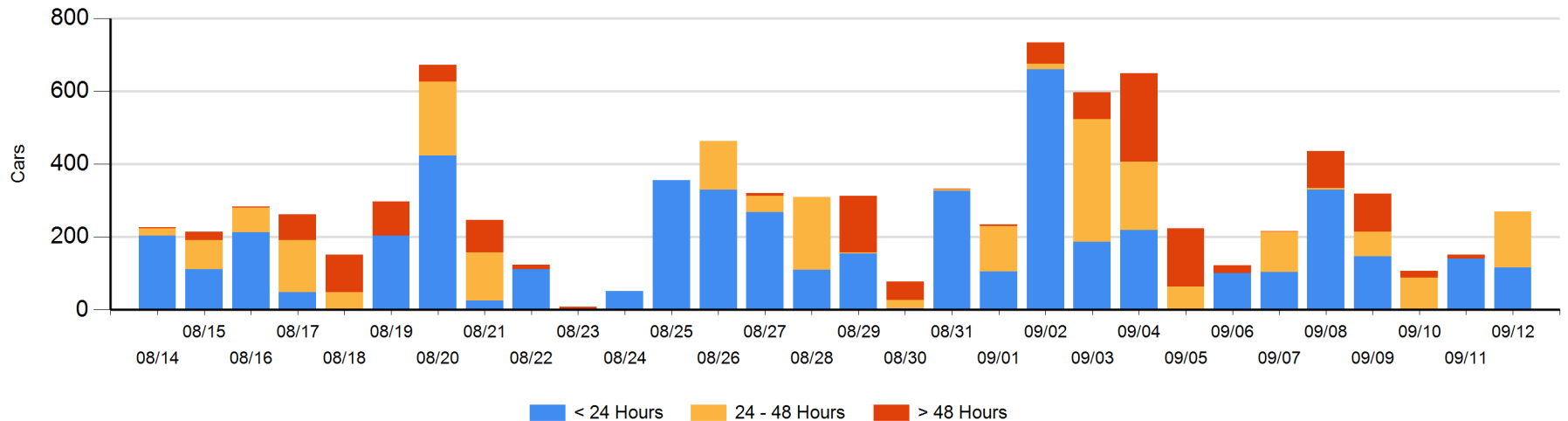
**Today**

	< 24 Hrs	24 - 48 Hrs	> 48-72 Hrs	> 72 Hrs	Total On Hand
CN					0
CP	116	153			269

**Change in Last 24 Hours**

	< 24 Hrs	24-48 Hrs	48 - 72 Hrs	> 72 Hrs
CN				
CP	-24	153	-8	-4

**Loaded Cars on Hand Thunder Bay Waiting for Placement - Last 30 Days All Railways**



## Measurement Definitions

Loads on Wheels	<p>Count of loaded rail cars including all rail cars that have been released loaded at origin and have not been reported by the railway as unloaded at destination.</p> <p>Counts include all rail cars (hopper cars and boxcars) moving within a pipeline.</p>
Loads Not Moving	<p>Loaded rail cars for which the railways have not reported a movement event for 48 hours or more whether the rail car is at origin, enroute or at destination.</p>
Port Unloads	<p>Count of rail cars reported by railways as unloaded at the western port destinations of Vancouver, Prince Rupert and Thunder Bay.</p> <p>Unload counts include all rail cars (hopper cars and boxcars) unloaded by all receivers including major port terminals, transloaders and other receivers.</p>
Cars Arrived	<p>Count of rail cars reported as arrived at the destination railway terminal.</p>
Cars Received in Interchange	<p>Count of rail cars received in interchange by each railway within a destination railway terminal. Interchange activity is tracked for the Vancouver and Thunder Bay pipelines as applicable.</p>
Cars Delivered in Interchange	<p>Count of rail cars delivered in interchange by each railway within a destination railway terminal. Interchange activity is tracked for the Vancouver and Thunder Bay pipelines as applicable.</p>
Cars Placed for Unloading	<p>Count of rail cars reported by the railways as placed loaded at the receiver's facility for unloading.</p>
Loads on Wheels at Destination	<p>Count of rail cars that remain under load within the destination railway terminal including rail cars that have been reported as placed for unloading but not yet reported as unloaded.</p>
Waiting Placement for Unloading	<p>Count of rail cars that have been reported as arrived at the destination railway terminal but not reported as placed for unloading by the railway.</p> <p>For the Ports of Vancouver, Prince Rupert and Thunder Bay the count of rail cars waiting placement for unloading is categorized by age – i.e. the elapsed time from arrival at destination to the current report date.</p>